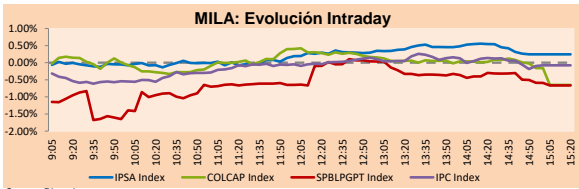


MILA

Lima, June 30, 2021

Main Indexes	Close	1 D	5 D	1 M	YTD	Cap. Burs. (US\$ bill)
▲ IPSA (Chile)	4,331.33	0.18%	-0.93%	-1.47%	3.69%	120.18
▲ IGPA (Chile)	21,730.50	0.18%	-0.92%	-1.77%	3.44%	143.28
▼ COLSC (Colombia)	959.69	-0.55%	-0.08%	-2.11%	-9.38%	4.60
▼ COLCAP (Colombia)	1,248.83	-0.65%	0.15%	2.10%	-13.15%	76.96
▼ S&P/BVL (Perú)*	18,850.91	-0.66%	0.67%	-10.12%	-9.47%	92.08
▼ S&P/BVL SEL (Perú)	497.31	-0.42%	0.00%	-9.84%	-9.81%	82.43
▲ S&P/BVL LIMA 25	24,793.11	0.74%	3.70%	-6.46%	-1.61%	91.29
▼ IPC (México)	50,289.75	-0.09%	0.24%	-0.85%	14.12%	308.17
▼ S&P MILA 40	481.80	-0.66%	0.36%	-4.01%	-9.88%	6,143.86

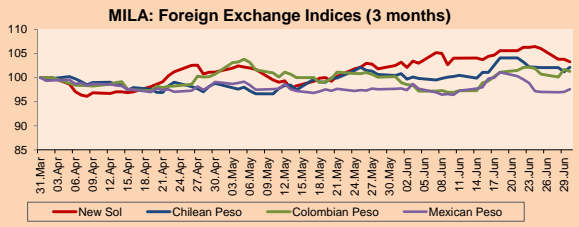
\*Legend: Variation 1D: 1 day; 5D: 5 days; 1M: 1 Month; YTD: Var% 12/31/20 to date



Source: Bloomberg

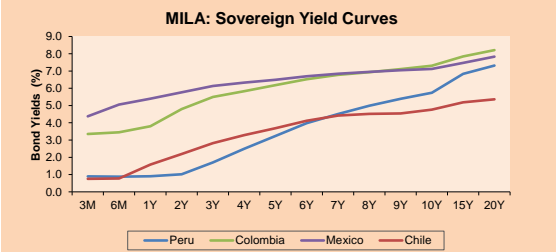
Currency	Price	1D*	5D*	30 D*	YTD*
▼ Sol (PEN)	3.8659	-0.77%	-2.85%	0.75%	6.85%
▼ Chilean Peso (CLP)	734.38	0.92%	-0.09%	1.69%	3.18%
▼ Colombian Peso (COP)	3,752.35	-0.40%	-0.86%	1.09%	9.41%
▲ Mexican Peso (MXN)	19.94	0.59%	-1.31%	-0.08%	0.11%

\*Legend: Variation 1D: 1 day; 5D: 5 days; 1M: 1 Month; YTD: Var% 12/31/20 to date



Base: 31/03/21=100  
Source: Bloomberg

Fixed Income	Currency	Price	Bid Yield (%)	Ask Yield (%)	Duration
PERU 7.35 07/21/25	USD	122.841	1.58	1.45	3.53
PERU 4.125 08/25/27	USD	112.125	2.06	1.98	5.47
PERU 8.75 11/21/33	USD	157.221	3.17	3.10	8.70
PERU 6.55 03/14/37	USD	137.944	3.44	3.38	10.31
PERU 5.625 11/18/2050	USD	137.749	3.56	3.53	16.67
CHILE 2.25 10/30/22	USD	102.474	0.55	0.22	1.31
CHILE 3.125 01/21/26	USD	108.485	1.25	1.16	4.24
CHILE 3.625 10/30/42	USD	106.575	3.21	3.18	15.33
COLOM 11.85 03/09/28	USD	158.337	2.52	2.21	5.08
COLOM 10.375 01/28/33	USD	150.106	4.82	4.60	7.55
COLOM 7.375 09/18/37	USD	131.821	4.60	4.54	10.34
COLOM 6.125 01/18/41	USD	118.713	4.69	4.63	12.00
MEX 4 10/02/23	USD	118.713	4.686	4.626	12
MEX5.55 01/45	USD	121.104	4.16	4.11	14.04



Source: Bloomberg

Equity

Largest gains	Exchange	Currency	Price	▲ %
GRUPO ENERGIA BO	Colombia	COP	2530.00	3.69
SOUTHERN COPPER	Peru	USD	63.13	2.62
AERO DEL SURES-B	Mexico	MXN	371.13	2.29
ENEL AMERICAS SA	Chile	CLP	103.80	2.17
GRUMA SAB-B	Mexico	MXN	226.60	2.09

Per Turnover	Exchange	Amount (US\$)
GRUPO F BANORT-O	Mexico	49,536,551
GRUPO MEXICO-B	Mexico	39,806,284
WALMART DE MEXIC	Mexico	39,037,830
ARCA CONTINENTAL	Mexico	31,517,007
AMERICA MOVIL-L	Mexico	29,910,424

Largest losses	Exchange	Currency	Price	▼ %
SURAMERICANA	Colombia	COP	19230	-2.73
AES GENER SA	Chile	CLP	102.2	-2.63
ALICORP-C	Peru	PEN	6	-2.60
BECLC SAB DE CV	Mexico	MXN	51.52	-2.00
GRUPO FIN INB-O	Mexico	MXN	19.72	-1.94

Per Volume	Exchange	Volume
ITAU CORPBANCA	Chile	202,510,247
ENEL AMERICAS SA	Chile	104,306,947
BANCO DE CHILE	Chile	74,847,154
BANCO SANTANDER	Chile	74,569,817
AMERICA MOVIL-L	Mexico	39,156,398

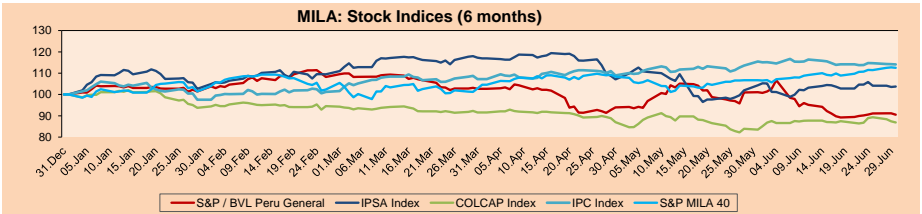
MILA

Peru: The General Index of the BVL ended today's session with a negative result of -0.66%. The index maintains an annual accumulated negative trend of -9.47% in local currency, while the adjusted return in dollars amounts to -15.27%. Then, the S&P / BVL Peru SEL varied by -0.42% while the S&P / BVL LIMA 25 by +0.74%. The PEN spot reached S / 3.8659. Headline: Peru's country risk fell three basis points and closed at 1.34 percentage points

Chile: The IPSA index ended the day with a positive return of + 0.18%. The sectors that benefited the most from the session were Industrial (+ 7.20%) and Non-Basic Consumer Products (+ 3.07%). The best performing stocks were Compañía Sudamericana de Vapo (+ 7.20%) and SACI Falabella (+ 3.45%). Headline: Minimum wage readjustment ready to become law

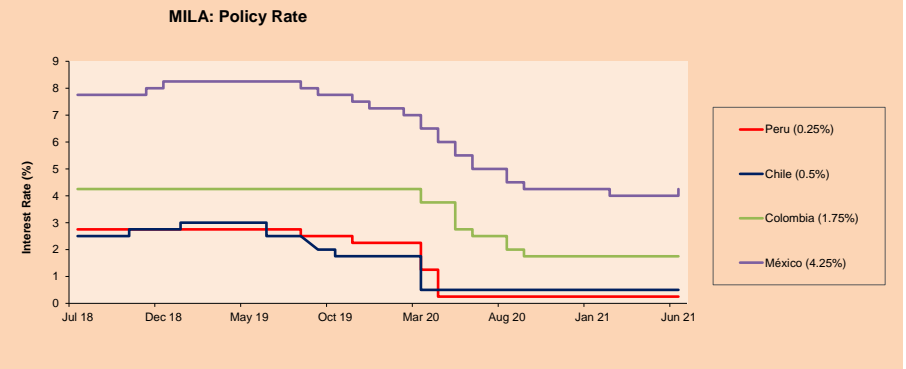
Colombia: The COLCAP index closed today with a negative return of -0.65%. The most affected sectors of the day were Materials (-3.47%) and Finance (-0.55%). The worst performing stocks were Grupo Argos SA (-3.85 %) and Suramericana (-2.63%). Headline: In May, unemployment slowed the pace of job recovery

Mexico: The IPC index closed the day with a negative return of -0.09%. The most affected sectors of the day were Communication Services (-0.69%) and Non-Basic Consumer Products (-0.40%). The worst performing stocks were Wal-Mart de México SAB de CV (-1.75%) and América Móvil SAB de CV (-1.57%) Headline: Petroleum 'da la cara' by public finances: budget revenues rise 6.7%



Base: 01/01/21=100  
Source: Bloomberg

ETFs	Curr.	Close	1D	5D	30 D	YTD	Exchange
▲ iShares MSCI All Peru Caped Index Fund	USD	29.06	0.28%	3.27%	-11.70%	-16.21%	NYSE Arca
▲ iShares MSCI All Chile Caped Index Fund	USD	28.98	0.45%	-0.34%	-1.46%	-4.07%	Cboe BZX
▼ Global X MSCI Colombia	USD	9.9749	-0.35%	1.22%	1.28%	-12.19%	NYSE Arca
▲ iShares MSCI Mexico Capped	USD	47.99	-0.60%	1.14%	-0.25%	11.63%	NYSE Arca
▼ iShares MSCI Emerging Markets	USD	55.15	-0.65%	1.12%	0.51%	6.74%	NYSE Arca
▼ Vanguard FTSE Emerging Markets	USD	54.31	-0.62%	1.10%	0.80%	8.38%	NYSE Arca
▼ iShares Core MSCI Emerging Markets	USD	66.99	-0.70%	1.03%	0.51%	7.98%	NYSE Arca
▼ iShares JP Morgan Emerging Markets Bonds	USD	64.16	-0.33%	0.55%	-0.99%	5.04%	Cboe BZX
▼ Morgan Stanley Emerging Markets Domestic	USD	6.12	-1.13%	-0.16%	-2.70%	-2.70%	New York



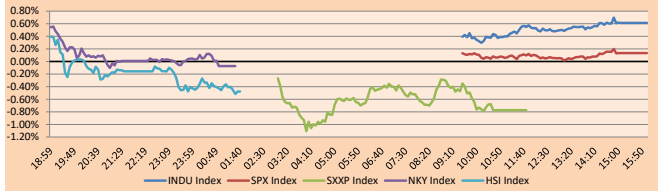
Source: Bloomberg

## WORLD

Main Indices	Close	1 D*	5 D*	1 M*	YTD*	Market Cap. (US\$ Mill.)
▲ Dow Jones (USA)	34,502.51	0.61%	1.85%	-0.21%	12.73%	10,487,892
▲ Standard & Poor's 500 (EEUU)	4,297.50	0.13%	1.31%	2.27%	14.41%	37,966,578
▼ NASDAQ Composite (USA)	14,503.35	-0.17%	1.83%	5.59%	12.54%	24,277,062
▼ Stoxx EUROPE 600 (Europe)	452.84	-0.77%	-0.06%	0.61%	13.49%	10,616,062
▼ DAX (Germany)	15,531.04	-1.02%	0.48%	-0.23%	13.21%	1,174,732
▼ FTSE 100 (United Kingdom)	7,037.47	-0.71%	-0.52%	-0.61%	8.93%	1,471,464
▼ CAC 40 (France)	6,507.83	-0.91%	-0.66%	0.28%	17.23%	1,816,544
▼ IBEX 35 (Spain)	8,821.20	-1.05%	-1.48%	-4.01%	9.26%	500,302
▼ MSCI AC Asia Pacific Index	207.97	-0.26%	0.52%	-1.14%	4.02%	26,976,680
▼ HANG SENG (Hong Kong)	28,827.95	-0.57%	0.04%	-2.17%	5.86%	4,466,562
▲ SHANGHAI SE Comp. (China)	3,591.20	0.50%	0.70%	-0.92%	3.41%	6,959,002
▲ NIKKEI 225 (Japan)	28,791.53	-0.07%	-0.29%	-0.62%	4.35%	3,895,043
▲ S&P/ASX 200 (Australia)	7,313.02	0.16%	0.20%	2.20%	10.82%	1,750,247
▼ KOSPI (South Korea)	3,296.68	-0.09%	0.24%	2.06%	14.43%	1,957,979

\*Legend: Variation 1D: 1 Day; 5D: 5 Days; 1M: 1 Month; YTD: Var.% 12/31/20 to date

Global Markets: Intraday Evolution (var %)

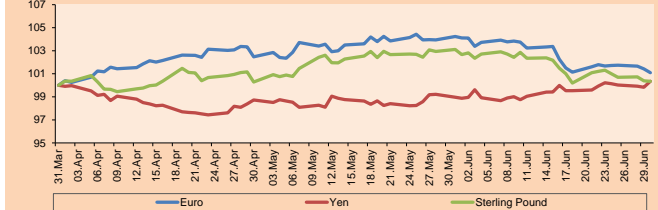


Source: Bloomberg

Currency	Price	1 D*	5 D*	1 M*	YTD*
▼ Euro	1.1858	-0.33%	-0.57%	-3.02%	-2.93%
▲ Yen	111.1100	0.52%	0.14%	1.40%	7.61%
▼ Sterling Pound	1.3831	-0.04%	-0.95%	-2.68%	1.18%
▼ Yuan	6.4571	-0.10%	-0.27%	1.37%	-1.07%
▲ Hong Kong Dollar	7.7651	0.02%	0.00%	0.05%	0.15%
▲ Brazilian Real	4.9696	0.26%	0.05%	-4.78%	-4.40%
▲ Argentine Peso	95.7210	0.02%	0.20%	1.10%	13.76%

\*Legend: Variation 1D: 1 Day; 5D: 5 Days; 1M: 1 Month; YTD: Var.% 12/31/20 to date

Foreign Exchange Indices (3 months)

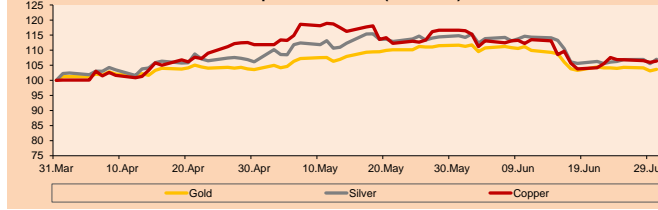


Base: 31/03/21=100  
Source: Bloomberg

Commodities	Close	1 D*	5 D*	1 M*	YTD*
▲ Oro (US\$ Oz. T) (LME)	1,770.11	0.50%	-0.48%	-7.17%	-6.76%
▲ Plata (US\$ Oz. T) (LME)	26.13	1.37%	0.91%	-6.78%	-1.05%
▲ Cobre (US\$ TM) (LME)	9,351.50	0.42%	-1.07%	-8.75%	20.68%
▲ Zinc (US\$ TM) (LME)	2,966.75	0.58%	3.08%	-2.52%	8.70%
▲ Petróleo WTI (US\$ Barril) (NYM)	73.47	0.67%	0.53%	11.15%	51.89%
▼ Estanto (US\$ TM) (LME)	32,920.00	-1.06%	2.71%	-0.24%	60.24%
▼ Plomo (US\$ TM) (LME)	2,265.00	-2.98%	3.91%	3.13%	14.64%
▲ Azúcar #11 (US\$ Libra) (NYB-ICE)	17.89	2.00%	5.17%	2.88%	27.42%
▲ Cacao (US\$ TM) (NYB-ICE)	2,389.00	-0.04%	0.84%	-2.73%	-4.67%
▼ Café Arábica (US\$ TM) (NYB-ICE)	159.75	-0.28%	3.80%	-2.77%	19.84%

\*Legend: Variación 1D: 1 Día; 5D: 5 Días; 1M: 1 Mes; YTD: Var.% 31/12/20 a la fecha

Principal Metals Index (3 months)



Base: 31/03/21=100  
Source: Bloomberg

## Equity

Germany (Stocks from DAX Index)

Largest gains	Curr.	Price	▲ %	Exchange	Largest losses	Curr.	Price	▼ %	Exchange
SIE GY	EUR	133.62	-0.73	Xetra	MTX GY	EUR	208.9	0.14	Xetra
DWNI GY	EUR	51.58	-0.08	Xetra	MUV2 GY	EUR	230.95	-1.09	Xetra
ADS GY	EUR	313.9	-1.13	Xetra	1COV GY	EUR	54.46	-0.87	Xetra
CON GY	EUR	123.98	-2.87	Xetra	LIN GY	EUR	243.35	-0.29	Xetra

Europe (Stocks from STOXX EUROPE 600)

Largest gains	Curr.	Price	▲ %	Exchange	Largest losses	Curr.	Price	▼ %	Exchange
ALE PW	PLN	65.62	0.18	Warsaw	GLPG NA	EUR	58.48	-1.66	EN Amsterdam
DNB NO	NOK	4.66	5.86%	Oslo	MGST LN	GBP	461.2	0.50	Londres
SCHANO	NOK	415.6	-1.19	Oslo	IBE SQ	EUR	10.28	-1.67	Soc.Bol SIBE
TEP FP	EUR	342.3	-1.10	EN Paris	SALM NO	NOK	571.2	0.21	Oslo

## Global Overview:

### United States:

Major U.S. indices had a mixed close on Wednesday amid the release of solid economic data and the spread of the Delta variant of COVID-19 on the European continent. Wage processing firm ADP released that the private sector created 692,000 jobs in June, above estimates. Similarly, used home sales soared to 13% y-o-y in May, reaching their highest level since 2005. Thus, the S&P 500 closed with slight gains +0.13% driven by the energy +1.33% and industrials +0.84% sectors after oil prices advanced supported by data suggesting that U.S. crude stockpiles declined by 8.2 million barrels. In corporate news, ride-hailing services company Didi Global Inc prepares to launch its IPO, amid high investor expectations as it ranks as the second largest in the United States. Thus, S&P 500 +0.13%; NASDAQ -0.17%; DOW JONES -0.03% closed the day with mixed performances.

### Europe:

European indexes ended the day with negative results, due to growing concerns about rising inflation and cases of the Delta variant of the coronavirus. Despite the rise in technology stocks to record highs, economically sensitive sectors were hit. The pan-European STOXX 600 fell alongside banking, energy and mining stocks. The index is close to posting its biggest first-half percentage gain since 1998, but the double whammy of high inflation has slowed gains recently. In London, the index closed lower after European investors reacted to a series of economic data released on Wednesday: UK first-quarter GDP was confirmed at -1.6%, below expectations, while business investment fell 10.7% quarter-on-quarter due to tightening blocking measures. On the other hand, after June's strong rise in economic confidence, the focus will be on German unemployment figures and Eurozone inflation data released later in the day. Thus, STOXX 600 -0.77%; FTSE 100 -0.71%; CAC 40 -0.91%; DAX -1.02%; IBEX 35 -1.05% closed the day with negative

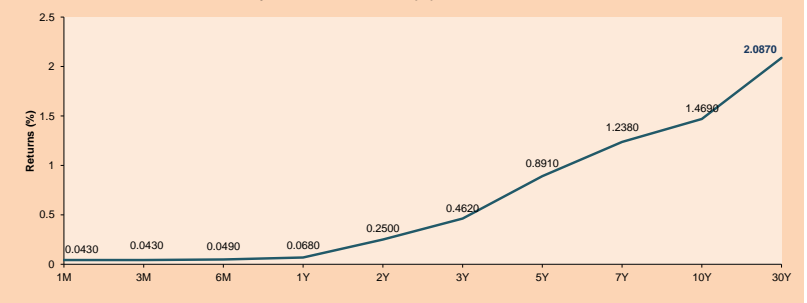
### Asia:

The indexes of the Asian continent closed the day with mixed returns inclined to the positive terrain after it was verified that the current vaccines for COVID-19 are also effective against the delta variant, thus generating optimism in investors. The Chinese market closed with positive returns driven by the results of the vaccine studies. The Shanghai Composite + 0.85% closed with positive returns driven by the Information Technology sector + 2.94% which was also reflected in the CSI 300 + 0.65%. Meanwhile, in Hong Kong the market closed with losses led by the Health sector -1.28%, contravening the general market sentiment. The Japanese market closed almost flat but in negative territory with a fall in the Real Estate sector -0.70%. On the other hand, the South Korean market closed with returns, also driven by the technology sector. Finally, the Australian market closed with gains thanks to its rapid vaccination campaign and gains in Communication Services +2.66% and Materials + 0.79%. Thus, NIKKEI -0.07%; HANG SENG -0.57%; CSI 300 + 0.65%; SHANGHAI COMPOSITE + 0.85%; KOSPI + 0.30%; S&P/ASX 200 + 0.16% finished with mixed returns.

## ETFs

ETFs	Curr.	Close	1D	5D	30 D	YTD	Exchange
SPDR S&P 500 ETF TRUST	USD	428.06	0.08%	1.29%	1.91%	14.49%	NYSE Arca
ISHARES MSCI EMERGING MARKET	USD	55.15	-0.65%	1.12%	0.51%	6.74%	NYSE Arca
ISHARES IBOXX HIGH YLD CORP	USD	88.04	0.01%	0.54%	0.99%	0.85%	NYSE Arca
FINANCIAL SELECT SECTOR SPDR	USD	36.69	0.44%	1.80%	-3.42%	24.46%	NYSE Arca
VANECK GOLD MINERS	USD	33.98	1.01%	-1.02%	-13.80%	-5.86%	NYSE Arca
ISHARES RUSSELL 2000 ETF	USD	229.37	0.01%	0.31%	1.72%	16.99%	NYSE Arca
SPDR GOLD SHARES	USD	165.63	0.49%	-0.31%	-7.15%	-7.14%	NYSE Arca
ISHARES 20+ YEAR TREASURY BO	USD	144.35	0.45%	0.75%	4.27%	-8.48%	NASDAQ GM
INVESCO QQQ TRUST SERIES 1	USD	354.43	-0.16%	1.92%	6.14%	12.97%	NASDAQ GM
ISHARES BIOTECHNOLOGY ETF	USD	163.65	0.03%	1.96%	7.70%	8.03%	NASDAQ GM
ENERGY SELECT SECTOR SPDR	USD	53.87	1.24%	-1.30%	3.18%	42.14%	NYSE Arca
PROSHARES ULTRA VIX ST FUTUR	USD	27.98	-1.27%	-4.05%	-22.62%	73.73%	Cboe BZX
UNITED STATES OIL FUND LP	USD	49.88	-0.02%	0.32%	9.82%	51.11%	NYSE Arca
ISHARES MSCI BRAZIL ETF	USD	40.54	-1.12%	-1.34%	4.19%	9.36%	NYSE Arca
SPDR S&P OIL & GAS EXP & PR	USD	96.69	1.90%	-0.35%	8.56%	65.28%	NYSE Arca
UTILITIES SELECT SECTOR SPDR	USD	63.23	-0.19%	-0.21%	-2.96%	0.85%	NYSE Arca
ISHARES US REAL ESTATE ETF	USD	101.94	-0.57%	-0.74%	1.75%	19.02%	NYSE Arca
SPDR S&P BIOTECH ETF	USD	135.40	-0.25%	0.81%	5.70%	-3.82%	NYSE Arca
ISHARES IBOXX INVESTMENT GRA	USD	134.36	0.11%	0.59%	2.01%	-2.73%	NYSE Arca
ISHARES JP MORGAN US EMERGI	USD	112.46	0.13%	0.16%	0.54%	-2.98%	NASDAQ GM
REAL ESTATE SELECT SECT SPDR	USD	44.33	-0.78%	-0.56%	2.47%	21.25%	NYSE Arca
ISHARES CHINA LARGE-CAP ETF	USD	46.33	-1.15%	1.27%	0.19%	-0.22%	NYSE Arca
CONSUMER STAPLES SPDR	USD	69.97	0.78%	1.69%	-1.19%	3.74%	NYSE Arca
VANECK JR GOLD MINERS	USD	46.75	2.01%	-1.72%	-14.55%	-13.81%	NYSE Arca
SPDR BDC BANC HIGH YIELD BND	USD	109.96	-0.02%	0.42%	0.96%	0.94%	NYSE Arca
VANGUARD REAL ESTATE ETF	USD	101.79	-0.53%	-1.34%	1.91%	19.85%	NYSE Arca
GRAYSCALE BITCOIN TRUST BTC	USD	29.81	-4.24%	7.27%	-1.36%	-6.84%	OTC US

USA Treasury Bonds Yield Curve (%)



Source: Bloomberg

# LIMA

## Stocks

Ticker	Currency	Price	1D*	5D*	30D*	YTD*	Frequency	Volume (US\$)	Beta	Dividend Yield (%)	Price Earning	Market Cap. (M US\$)	Economic Sector*	Index Weight
▼ ALICORC1 PE**	S/.	6.30	-0.55%	-0.08%	-2.11%	-9.38%	100.00%	353,350	1.01	3.97	11.89	1,389.98	Industrial	3.53%
▲ ATACOBC1 PE**	S/.	0.10	5.26%	2.04%	-7.41%	-27.54%	63.16%	27,942	1.17	0.00	-	24.44	Mining	1.02%
▲ BACKUS1 PE**	S/.	18.00	2.80%	6.51%	1.12%	-10.67%	89.47%	467,271	0.75	7.15	8.69	6,386.97	Industrial	0.82%
▼ BAP PE**	US\$	121.22	-2.04%	4.31%	-12.16%	-24.52%	100.00%	3,150,003	1.15	0.00	-	11,441.02	Diverse	5.82%
▼ BVN PE**	US\$	9.01	-0.22%	-4.15%	-22.19%	-24.92%	94.74%	249,544	1.10	0.00	-	2,479.21	Mining	5.88%
▲ CASAGRC1 PE**	S/.	4.17	6.92%	15.83%	-22.78%	-12.21%	89.47%	109,289	1.24	17.94	3.08	90.86	Agricultural	1.31%
▲ BBVAC1 PE**	S/.	1.92	0.52%	3.50%	-5.37%	-8.40%	94.74%	83,631	1.09	2.27	28.38	3,356.59	Finance	2.85%
▲ CORARE1 PE**	S/.	1.10	0.92%	23.60%	-7.56%	23.60%	100.00%	76,688	1.35	18.49	3.52	361.32	Industrial	1.72%
- CPACASC1 PE**	S/.	5.10	0.00%	-0.39%	-10.53%	-3.77%	100.00%	353,593	0.71	15.49	36.43	612.11	Industrial	2.38%
▲ CVERDEC1 PE**	US\$	17.01	3.09%	9.74%	-14.95%	-18.69%	100.00%	230,344	1.45	3.36	9.74	5,954.45	Mining	5.25%
▲ ENGEPEC1 PE**	S/.	2.10	5.53%	6.06%	2.44%	5.00%	68.42%	75,647	0.68	9.40	12.84	1,542.04	Public Services	1.44%
- ENDISPC1**	S/.	3.85	0.00%	-1.28%	-19.29%	-28.70%	52.63%	4,924	0.77	0.00	8.66	635.94	Public Services	0.98%
▲ FERREY1 PE**	S/.	1.61	4.55%	12.59%	-7.47%	-7.47%	100.00%	717,311	1.11	11.31	7.11	406.33	Diverse	4.90%
▲ AENZAC1 PE**	S/.	1.35	3.85%	10.66%	15.38%	-22.41%	100.00%	126,870	0.73	0.00	-	304.48	Diverse	4.05%
▼ IFS PE**	US\$	25.27	-1.60%	-0.51%	-9.10%	-18.33%	100.00%	27,673	1.19	3.05	14.66	2,917.36	Diverse	7.22%
- INRETC1 PE**	US\$	35.00	0.00%	0.40%	-6.67%	-10.71%	100.00%	22,645	0.83	1.95	73.80	3,598.26	Diverse	5.28%
▲ LUSURC1 PE**	S/.	11.30	3.20%	4.34%	-1.74%	-55.69%	78.95%	24,275	0.73	9.87	12.24	1,423.36	Public Services	1.81%
▲ MINSURI1 PE**	S/.	2.62	1.55%	5.65%	-16.29%	-41.62%	100.00%	269,315	0.96	12.75	5.18	1,953.87	Mining	3.09%
- PML PE**	US\$	0.10	0.00%	-3.00%	-23.62%	-8.49%	73.68%	2,040	1.42	0.00	-	25.64	Mining	2.12%
▲ RELAPAC1 PE**	S/.	0.16	5.96%	16.79%	39.13%	131.88%	100.00%	64,106	1.14	0.00	4.23	344.31	Industrial	2.12%
▼ SCCO PE**	US\$	64.35	-0.29%	1.93%	-7.94%	-2.35%	94.74%	64,350	0.97	3.42	22.36	49,747.26	Mining	2.14%
▲ SIDERC1 PE**	S/.	1.03	5.10%	13.19%	3.00%	21.18%	94.74%	49,623	0.94	21.80	5.15	236.57	Industrial	1.43%
▼ TV PE**	US\$	0.18	-1.10%	2.86%	-13.46%	22.45%	94.74%	13,053	1.24	0.00	-	178.04	Mining	2.93%
▼ UNACEMC1 PE**	S/.	1.34	-2.19%	14.53%	-8.84%	-13.55%	100.00%	92,471	1.16	1.94	10.58	630.20	Industrial	3.00%
▲ VOLCABC1 PE**	S/.	0.52	6.34%	5.26%	-23.53%	0.00%	100.00%	429,718	1.58	0.00	-	548.34	Mining	5.90%
▲ NEXAPEC1 PE**	S/.	3.04	4.83%	1.33%	-7.88%	7.42%	63.16%	51,496	1.11	0.00	23.61	1,039.91	Mining	1.56%

Quantity of shares: 26  
Source: Bloomberg, Económica  
\* Bloomberg Industry Classification System  
\*\* PER is used in the stock market and original currency of the instrument  
\*Legend: Variation 1D: 1 Day; 5D: 5 Days, 1M: 1 Month; YTD: Var. % 12/31/20 to date

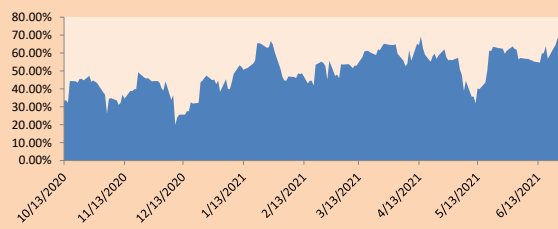
### Sectorial Indices

	Close	1D*	5D*	30D*	YTD*	Beta
▼ S&P/BVLMining	387.42	-0.58%	-1.94%	-12.27%	-0.65%	0.97
▲ S&P/BVLConsumer	1,028.13	0.06%	1.48%	-4.07%	-5.56%	0.80
▲ S&P/BVLIndustrials	187.05	1.54%	9.10%	-0.74%	-1.84%	0.88
▼ S&P/BVLFinancials	844.61	-2.76%	0.51%	-11.16%	-18.31%	1.11
▲ S&P/BVLConstruction	202.53	0.27%	7.57%	1.21%	-3.15%	0.79
▲ S&P/BVLPublicSvcs	527.16	1.76%	1.72%	-4.34%	-14.16%	0.42
▲ S&P/BVLElectricUtil	514.64	1.76%	1.72%	-4.34%	-14.16%	0.42

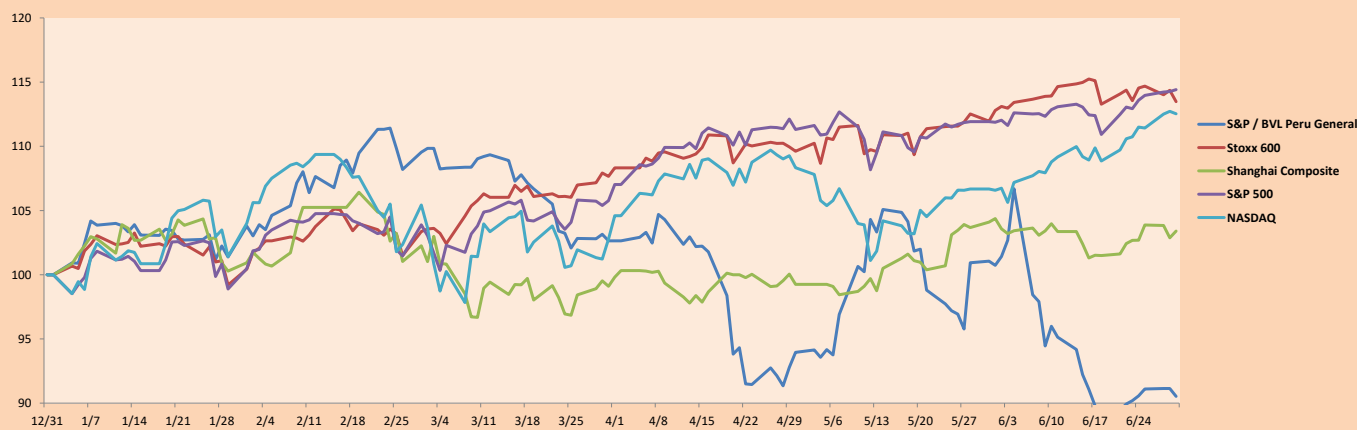
S&P/BVLConstructionTRPEN

\*Legend: Variation 1D: 1 Day; 5D: 5 Days, 1M: 1 Month; YTD: Var. % 12/31/20 to date

Correlation Graph of Returns of Mining Index against Metallic Index of London (3 months)



Indices (6 months)



Base: 31/12/20=100  
Source: Bloomberg

Capital Market Laboratory Coordinator: Economist Bruno Bellido  
Collaboration: María Camarena, Alonso García, Adrian Paredes and Jairo Valverde  
email: pulsobursatil@ulima.edu.pe  
facebook: www.facebook.com/pulsobursatil.ul

## SOVEREIGN RATING

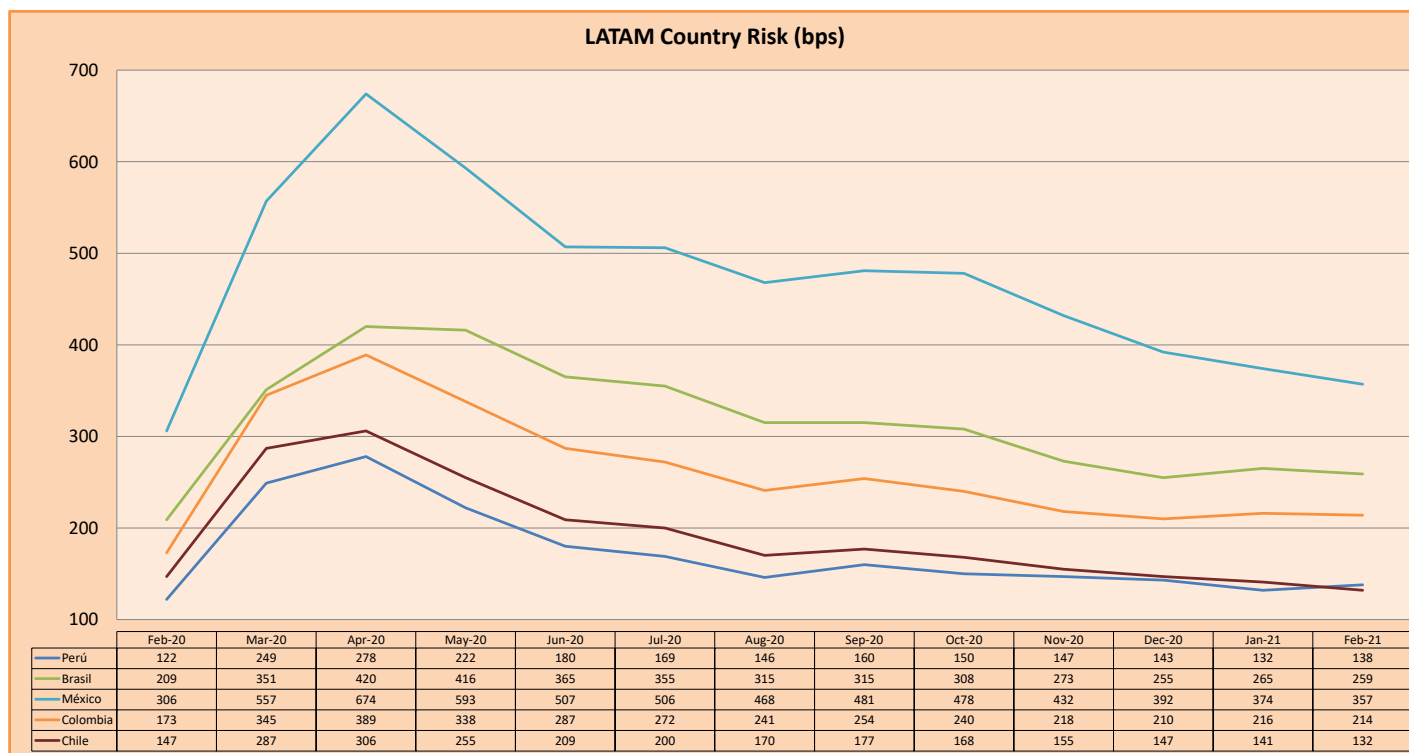
### RISK RATINGS

Moody's	S&P	Fitch	
Aaa	AAA	AAA	Prime
Aa1	AA+	AA+	High credit quality
Aa2	AA	AA	
Aa3	AA-	AA-	
A1	A+	A+	Medium-high grade, with low credit risk
A2	A	A	
A3	A-	A-	
Baa1	BBB+	BBB+	Moderate Credit Risk
Baa2	BBB	BBB	
Baa3	BBB-	BBB-	
Ba1	BB+	BB+	It has speculative elements and it is subject to substantial credit risk
Ba2	BB	BB	
Ba3	BB-	BB-	
B1	B+	B+	It is considered speculative and it has high credit risk
B2	B	B	
B3	B-	B-	
Caa1	CCC+	CCC	Bad credit conditions and it is subject to high credit risk
Caa2	CCC		
Caa3	CCC-		
Ca	C	DDD	Very close to default or in default
C	D		

Source: Bloomberg

Latin America Credit Rating			
Clasificadora de riesgo			
Country	Moody's	Fitch	S&P
Peru	A3	BBB+	BBB+
México	Ba2	BB-	BB-
Venezuela	C	WD	SD
Brazil	Ba2	BB-	BB-
Colombia	Baa2	BBB-	BB+
Chile	A1	A-	A
Argentina	Ca	WD	CCC+
Panama	Baa2	BBB-	BBB

Source: Bloomberg



Source: BCRP

Capital Market Laboratory Coordinator: Economist Bruno Bellido  
Collaboration: María Camarena, Alonso García, Nicolás Muñoz, Adrián Paredes y Jairo Valverde  
email: [pulsobursatil@ulima.edu.pe](mailto:pulsobursatil@ulima.edu.pe)  
facebook: [www.facebook.com/pulsobursatil.ul](https://www.facebook.com/pulsobursatil.ul)