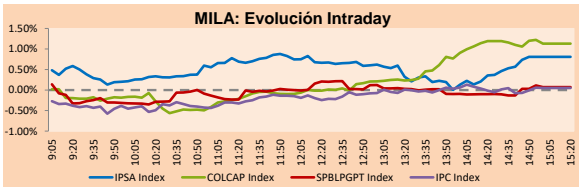


## MILA

Lima, July 7, 2021

Main Indexes	Close	1 D	5 D	1 M	YTD	Cap. Burs. (US\$ bill)
▲ IPSA (Chile)	4,206.43	0.98%	-2.88%	0.82%	0.70%	114.70
▲ IGPA (Chile)	21,127.11	0.85%	-2.78%	0.37%	0.57%	136.97
▲ COLSC (Colombia)	954.09	0.00%	-1.13%	-3.06%	-9.91%	4.38
▲ COLCAP (Colombia)	1,286.43	1.13%	2.34%	2.21%	-10.53%	77.18
▲ S&P/BVL (Perú)*	18,803.16	0.07%	-0.25%	-7.76%	-9.70%	89.30
▲ S&P/BVL SEL (Perú)	497.95	0.41%	0.13%	-6.32%	-9.70%	81.47
▲ S&P/BVL LIMA 25	24,581.48	0.25%	-0.85%	-3.46%	-2.45%	88.53
▲ IPC (México)	50,052.91	0.01%	-0.47%	-1.60%	13.58%	306.47
▲ S&P MILA 40	469.18	0.30%	-2.62%	-5.39%	-12.24%	6,112.14

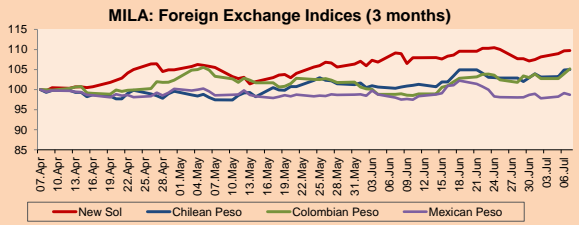
\*Legend: Variation 1D: 1 day; 5D: 5 days; 1M: 1 Month; YTD: Var% 12/31/20 to date



Source: Bloomberg

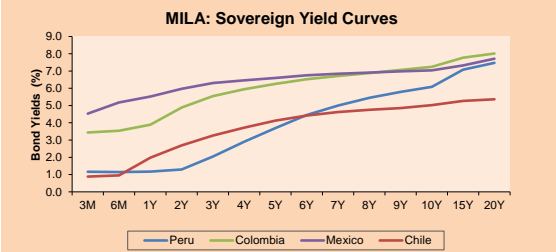
Currency	Price	1D*	5D*	30 D*	YTD*
▲ Sol (PEN)	3.9589	0.06%	2.41%	0.55%	9.42%
▲ Chilean Peso (CLP)	748.88	0.10%	1.97%	4.66%	5.21%
▲ Colombian Peso (COP)	3,831.40	1.16%	2.11%	6.43%	11.71%
▼ Mexican Peso (MXN)	19.94	-0.44%	0.04%	0.70%	0.15%

\*Legend: Variation 1D: 1 day; 5D: 5 days; 1M: 1 Month; YTD: Var% 12/31/20 to date



Base: 07/04/21=100  
Source: Bloomberg

Fixed Income	Currency	Price	Bid Yield (%)	Ask Yield (%)	Duration
PERU 7.35 07/21/25	USD	122.825	1.55	1.44	3.51
PERU 4.125 08/25/27	USD	112.44	2.01	1.92	5.45
PERU 8.75 11/21/33	USD	158.732	3.06	2.98	8.70
PERU 6.55 03/14/37	USD	139.343	3.34	3.28	10.32
PERU 5.625 11/18/2050	USD	140.168	3.46	3.42	16.74
CHILE 2.25 10/30/22	USD	102.467	0.55	0.17	1.29
CHILE 3.125 01/21/26	USD	108.634	1.23	1.10	4.22
CHILE 3.625 10/30/42	USD	107.977	3.14	3.08	15.34
COLOM 11.85 03/09/28	USD	158.684	2.46	2.15	5.06
COLOM 10.375 01/28/33	USD	150.072	4.81	4.61	7.52
COLOM 7.375 09/18/37	USD	131.661	4.61	4.56	10.30
COLOM 6.125 01/18/41	USD	118.68	4.69	4.63	11.95
MEX 4 10/02/23	USD	118.68	4.69	4.625	11.95
MEX5.55 01/45	USD	122.162	4.10	4.05	14.03



Source: Bloomberg

## Equity

Largest gains	Exchange	Currency	Price	▲%
AERO DEL PACIF-B	Mexico	MXN	221.09	4.07
FALABELLA SA	Chile	CLP	3150.00	3.99
GRUPO BIMBO-A	Mexico	MXN	45.19	3.55
CAP	Chile	CLP	12995.00	3.23
SURAMERICANA	Colombia	COP	19300.00	3.15

Per Turnover	Exchange	Amount (US\$)
GRUPO MEXICO-B	Mexico	41,061,823
WALMART DE MEXIC	Mexico	26,775,832
AMERICA MOVIL-L	Mexico	26,693,482
GRUPO F BANORT-O	Mexico	21,960,279
AERO DEL PACIF-B	Mexico	18,222,874

Largest losses	Exchange	Currency	Price	▼%
GRUPO TELEV-CPO	Mexico	MXN	53.97	-4.51
ENGIE ENERGIA CH	Chile	CLP	530	-2.21
CENCOSUD SA	Chile	CLP	1335	-1.84
AMERICA MOVIL-L	Mexico	MXN	14.73	-1.67
GRUPO CARSO-A1	Mexico	MXN	63.5	-0.94

Per Volume	Exchange	Volume
ITAU CORPBANCA	Chile	237,848,281
BANCO SANTANDER	Chile	168,845,363
BANCO DE CHILE	Chile	141,276,722
ENEL AMERICAS SA	Chile	85,359,933
ENEL CHILE SA	Chile	44,127,546

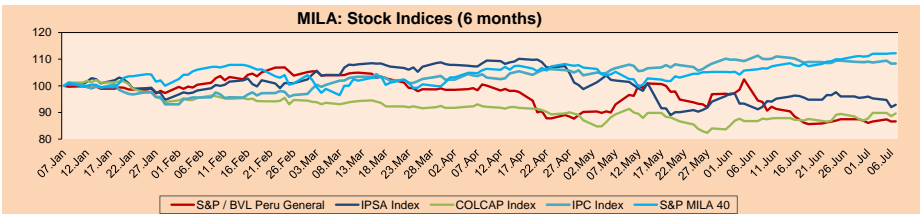
## MILA

Peru: The General Index of the BVL ended today's session with a positive result of + 0.07%. The index maintains an annual accumulated negative trend of -9.70% in local currency, while the adjusted return in dollars amounts to -17.47%. Then, the S&P / BVL Peru SEL changed by + 0.41% while the S&P / BVL LIMA 25 by + 0.25%. The PEN spot reached S / 3.9589. Headline: Peru's country risk rose two basis points and closed at 1.39 percentage points

Chile: The IPSA index ended the day with a positive return of + 0.98%. The sectors that benefited the most from the session were Non-Basic Consumer Products (+ 3.83%) and Finance (+ 1.56%). The stocks with the best performance were SACI Falabella (+ 3.99%) and CAP SA (+ 3.23%). Headline: Chilean wages and labor cost stabilized during May

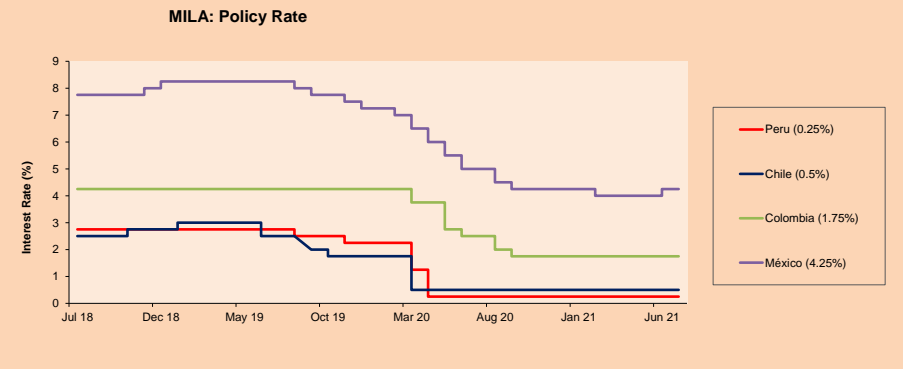
Colombia: The COLCAP index closed today with a positive return of + 1.13%. The sectors that benefited the most from the session were Finance (+ 2.11%) and Energy (+ 0.39%). The best performing stocks were Suramericana (+ 3.15%) and Bancolombia SA (+ 2.92%). Headline: Second Half: GDP Optimism, But Closures Caution

Mexico: The IPC index closed the day with a positive return of + 0.01%. The sectors that benefited the most from the conference were Industrial (+ 1.79%) and Materials (+ 0.61%). The best performing stocks were Grupo Aeroportuario del Pacifico (+ 4.07%) and Grupo Bimbo SAB de CV (+ 3.55%) Headline: Investment and consumption are losing strength



Base: 08/01/21=100  
Source: Bloomberg

ETFs	Curr.	Close	1D	5D	30 D	YTD	Exchange
▲ iShares MSCI All Peru Caped Index Fund	USD	28.54	0.39%	-1.79%	-10.20%	-17.70%	NYSE Arca
▲ iShares MSCI All Chile Caped Index Fund	USD	27.62	0.36%	-4.69%	-4.79%	-8.57%	Cboe BZX
▲ Global X MSCI Colombia	USD	9.98	-0.50%	0.05%	-3.85%	-12.15%	NYSE Arca
▲ iShares MSCI Mexico Capped	USD	47.86	0.44%	-0.27%	-4.16%	11.33%	NYSE Arca
▼ iShares MSCI Emerging Markets	USD	53.76	-0.11%	-2.52%	-3.50%	4.04%	NYSE Arca
▲ Vanguard FTSE Emerging Markets	USD	53.04	0.09%	-2.34%	-3.19%	5.85%	NYSE Arca
▲ iShares Core MSCI Emerging Markets	USD	65.57	0.08%	-2.12%	-3.20%	5.69%	NYSE Arca
▲ iShares JP Morgan Emerging Markets Bonds	USD	63.32	0.19%	-1.31%	-2.75%	3.67%	Cboe BZX
▼ Morgan Stanley Emerging Markets Domestic	USD	6.06	-0.82%	-0.98%	-3.19%	-3.66%	New York



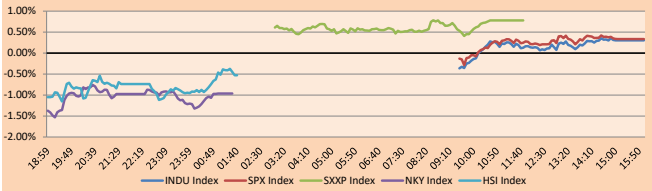
Source: Bloomberg

## WORLD

Main Indices	Close	1 D*	5 D*	1 M*	YTD*	Market Cap. (US\$ Mill.)
▲ Dow Jones (USA)	34,681.79	0.30%	1.14%	0.24%	13.32%	10,712,117
▲ Standard & Poor's 500 (EEUU)	4,358.13	0.34%	1.55%	3.10%	16.03%	38,509,389
▲ NASDAQ Composite (USA)	14,665.06	0.01%	0.94%	5.32%	13.79%	24,533,451
▲ Stoxx EUROPE 600 (Europe)	459.53	0.78%	1.48%	1.22%	15.16%	10,833,775
▲ DAX (Germany)	15,692.71	1.17%	1.04%	0.33%	14.39%	1,193,066
▲ FTSE 100 (United Kingdom)	7,151.02	0.71%	1.61%	0.79%	10.69%	1,495,630
▲ CAC 40 (France)	6,527.72	0.31%	0.31%	-0.36%	17.59%	1,834,789
▼ IBEX 35 (Spain)	8,854.50	-0.07%	0.38%	-3.27%	9.67%	508,458
▼ MSCI AC Asia Pacific Index	204.94	-0.56%	-1.46%	-2.37%	2.51%	26,540,860
▼ HANG SENG (Hong Kong)	27,960.62	-0.40%	-3.56%	-3.45%	2.04%	4,280,391
▲ SHANGHAI SE Comp. (China)	3,553.72	0.66%	-1.04%	-0.84%	2.22%	6,877,436
▼ NIKKEI 225 (Japan)	28,366.95	-0.96%	-1.47%	-2.44%	2.96%	3,878,530
▲ S&P/ASX 200 (Australia)	7,326.85	0.90%	0.19%	0.87%	11.67%	1,747,096
▲ KOSPI (South Korea)	3,285.34	0.01%	-0.47%	0.65%	13.76%	1,933,291

\*Legend: Variation 1D: 1 Day; 5D: 5 Days; 1M: 1 Month; YTD: Var.% 12/31/20 to date

Global Markets: Intraday Evolution (var %)

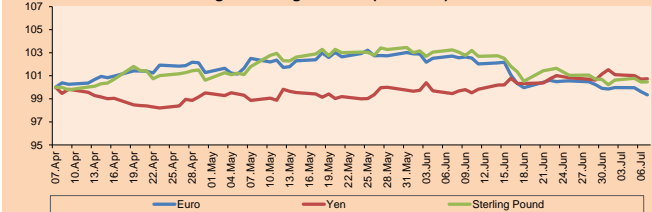


Source: Bloomberg

Currency	Price	1 D*	5 D*	1 M*	YTD*
▼ Euro	1.1790	-0.29%	-0.57%	-3.28%	-3.49%
▲ Yen	110.6600	0.03%	-0.41%	1.29%	7.18%
▲ Sterling Pound	1.3901	0.01%	-0.22%	-2.69%	0.96%
▼ Yuan	6.4728	-0.10%	0.24%	1.18%	-0.83%
▼ Hong Kong Dollar	7.7682	0.02%	0.04%	0.12%	0.19%
▲ Brazilian Real	5.2325	0.64%	5.29%	3.70%	0.65%
▲ Argentine Peso	95.9429	0.02%	0.23%	1.02%	14.02%

\*Legend: Variation 1D: 1 Day; 5D: 5 Days; 1M: 1 Month; YTD: Var.% 12/31/20 to date

Foreign Exchange Indices (3 months)

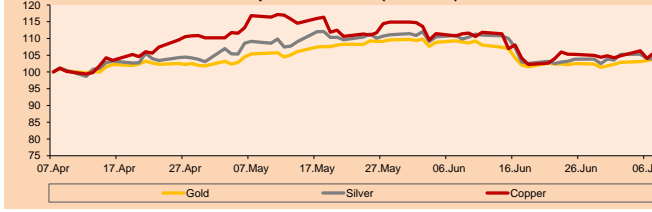


Base: 07/04/21=100  
Source: Bloomberg

Commodities	Close	1 D*	5 D*	1 M*	YTD*
▲ Oro (US\$ Oz. T) (LME)	1,803.63	0.36%	1.89%	-5.03%	-4.99%
▲ Plata (US\$ Oz. T) (LME)	26.14	-0.07%	0.05%	-6.27%	-0.99%
▲ Cobre (US\$ TM) (LME)	9,422.31	1.52%	0.76%	-4.64%	21.59%
▲ Zinc (US\$ TM) (LME)	2,940.75	0.81%	-0.88%	-1.23%	7.75%
▼ Petróleo WTI (US\$ Barril) (NYM)	72.20	-1.59%	-1.73%	4.58%	49.27%
▼ Estano (US\$ TM) (LME)	32,748.00	-0.09%	-0.52%	3.01%	59.40%
▼ Plomo (US\$ TM) (LME)	2,285.50	-0.28%	0.91%	6.58%	15.68%
▼ Azúcar #11 (US\$ Libra) (NYB-ICE)	17.75	-0.67%	-0.78%	1.60%	26.42%
▼ Café (US\$ TM) (NYB-ICE)	2,296.00	-0.09%	-3.89%	-4.49%	-8.38%
▲ Café Arábica (US\$ TM) (NYB-ICE)	149.95	1.25%	-6.13%	-7.55%	12.49%

\*Legend: Variación 1D: 1 Día; 5D: 5 Días; 1M: 1 Mes; YTD: Var.% 31/12/20 a la fecha

Principal Metals Index (3 months)



Base: 07/04/21=100  
Source: Bloomberg

## Equity

Germany (Stocks from DAX Index)

Largest gains	Curr.	Price	▲%	Exchange	Largest losses	Curr.	Price	▼%	Exchange
DHER GY	EUR	123.9	3.55	Xetra	MTX GY	EUR	206.9	-1.10	Xetra
SAP GY	EUR	124.5	3.49	Xetra	DBK GY	EUR	10.514	-1.00	Xetra
EOAN GY	EUR	10.192	2.55	Xetra	DAI GY	EUR	72.4	-0.70	Xetra
ADS GY	EUR	318.65	2.10	Xetra	DWNI GY	EUR	51.68	-0.12	Xetra

Europe (Stocks from STOXX EUROPE 600)

Largest gains	Curr.	Price	▲%	Exchange	Largest losses	Curr.	Price	▼%	Exchange
ALE PW	SEK	73.38	4.96	Warsaw	CCL LN	Gbp	1575.4	-4.68	Londres
ADDTB SS	PLN	159	4.61	Stockholm	NEL NO	NOK	19.35	-4.44	Oslo
HEI FP	EUR	433.7	4.38	EN Paris	INF LN	Gbp	512.4	-4.33	Londres
DM GY	EUR	75.22	4.15	Xetra	MOR GY	EUR	64.3	-3.71	Xetra

## Global Overview:

### United States:

The main U.S. indices ended the day at highs after the minutes of the last Federal Reserve meeting indicated that stimulus may not yet be tightened. This had a positive impact on the yield of the 10-year treasury bond, which fell to 1.306%. On the other hand, the president of the Atlanta Federal Reserve said that the increase in infections due to the new variant of COVID-19 could slow down the country's recovery, according to Reuters. Thus, the S&P 500 closed higher driven by the Basic Materials +1.02% and Industrials +1.00% sectors. Meanwhile, Internet and Technology stocks resume their gains; as investors prefer them over companies that reopened in the Energy and Retail sectors, according to CNBC. In corporate data, APPLE +1.8%; MICROSOFT +0.8% and AMAZON +0.5%. Finally, investors remain expectant for Thursday's session where the Labor Department report will be presented. In this regard, the number of new jobless claims is expected to decrease to 350,000. Thus, DOW JONES +0.30%; S&P 500 +0.34%; NASDAQ +0.01% closed higher.

### Europe:

European markets ended with stocks performing positively due to the recovery of commodities and a better growth forecast for the euro zone. Today, bond yields fell again, lifting technology stocks. Commodity-related stocks recovered from the previous session's declines, even though crude oil prices continued a week of negative returns. On the other hand, the European Commission raised its growth forecasts for the eurozone, projecting a GDP growth rate of 4.8% this year and 4.5% by 2022. As such, the pan-European STOXX 600 posted gains, with basic resources adding 2.3% to the day's gains, while travel and leisure stocks fell 1.5%. Among the stock stocks highlighted by Reuters, we have SAP +3.49%, which provided the biggest boost for the STOXX 600. In addition, they highlighted French energy group EDF +2.01% after raising its 2021 earnings target. With European earnings season set for the end of July, analysts expect STOXX 600 companies' earnings to rise 108.6% in the second quarter compared to a year ago, according to data from Refinitiv IBES. Thus, the STOXX 600 +0.78%, CAC 40 +0.31%, FTSE 100 +0.71%, DAX +1.17% closed with positive returns.

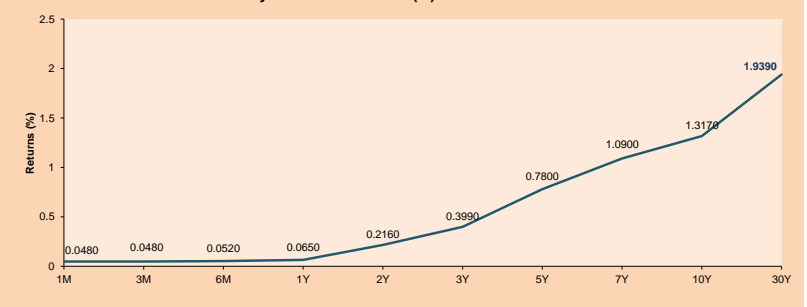
### Asia:

The major Asian indices finished with mixed but mostly negative returns following concerns about the increase in cases of the delta variant within the Asian continent. In China the market closed with positive returns driven by the Information Technology sectors + 2.32% and Health + 1.63%, in this way also the CSI 300 + 1.13% index closed with positive returns. Meanwhile, in Hong Kong the market closed with negative returns due to an abrupt increase in Covid19 cases and losses in the Energy sectors -1.88% and Communication Services -1.49%. The Japanese market closed with negative returns after the possibility of preventing attendees for the Tokyo Olympics is evaluated in order to contain the expansion of the new variant. The South Korean market closed with negative returns also as a result of a sharp increase in cases of the delta variant. Finally, the Australian market closed with positive results driven by gains within the Information Technology + 2.81% and Primary Needs + 1.86% sectors. Thus, NIKKEI -0.96%; HANGING SENG -0.40%; CSI 300 + 1.13%; S&P/ASX 200 + 0.90%; KOSPI -0.60% closed the session with mixed returns.

## ETFs

ETFs	Curr.	Close	1D	5D	30 D	YTD	Exchange
SPDR S&P 500 ETF TRUST	USD	434.46	0.35%	1.50%	2.91%	16.20%	NYSE Arca
ISHARES MSCI EMERGING MARKET	USD	53.76	-0.11%	-2.52%	-3.50%	4.04%	NYSE Arca
ISHARES IBOXX HIGH YLD CORP	USD	88.04	0.03%	0.00%	0.85%	0.85%	NYSE Arca
FINANCIAL SELECT SECTOR SPDR	USD	36.41	0.14%	-0.76%	-4.74%	23.51%	NYSE Arca
VANECK GOLD MINERS	USD	34.56	0.12%	1.71%	-10.58%	-4.05%	NYSE Arca
ISHARES RUSSELL 2000 ETF	USD	223.76	-0.93%	-2.45%	-2.90%	14.13%	NYSE Arca
SPDR GOLD SHARES	USD	168.76	0.38%	1.89%	-5.12%	-5.38%	NYSE Arca
ISHARES 20+ YEAR TREASURY BO	USD	148.04	0.89%	2.56%	6.14%	-6.14%	NASDAQ GM
INVECO QQQ TRUST SERIES 1	USD	360.95	0.21%	1.84%	7.23%	15.05%	NASDAQ GM
ISHARES BIOTECHNOLOGY ETF	USD	161.43	-0.88%	-1.36%	1.99%	6.56%	NASDAQ GM
ENERGY SELECT SECTOR SPDR	USD	52.05	-1.63%	-3.38%	-6.23%	37.34%	NYSE Arca
PROSHARES ULTRA VIX ST FUTUR	USD	28.16	0.43%	0.64%	-14.85%	-73.56%	Cboe BZX
UNITED STATES OIL FUND LP	USD	48.66	-2.48%	-2.45%	2.94%	47.41%	NYSE Arca
ISHARES MSCI BRAZIL ETF	USD	38.74	1.07%	-4.44%	-7.43%	4.50%	NYSE Arca
SPDR S&P OIL & GAS EXP & PR	USD	91.07	-2.32%	-5.81%	-6.45%	55.68%	NYSE Arca
UTILITIES SELECT SECTOR SPDR	USD	64.71	0.65%	2.34%	-1.22%	3.21%	NYSE Arca
ISHARES US REAL ESTATE ETF	USD	103.84	0.37%	1.86%	0.03%	21.24%	NYSE Arca
SPDR S&P BIOTECH ETF	USD	131.35	-1.68%	-2.99%	-0.95%	-6.70%	NYSE Arca
ISHARES IBOXX INVESTMENT GRA	USD	135.32	0.34%	0.71%	2.53%	-2.03%	NYSE Arca
ISHARES JP MORGAN USL EMERGI	USD	112.41	0.14%	-0.04%	0.58%	-3.02%	NASDAQ GM
REAL ESTATE SELECT SECT SPDR	USD	45.35	0.51%	2.30%	0.82%	24.04%	NYSE Arca
ISHARES CHINA LARGE-CAP ETF	USD	44.30	0.18%	-4.38%	-4.32%	-4.59%	NYSE Arca
CONSUMER STAPLES SPDR	USD	70.01	0.53%	0.06%	-1.95%	3.80%	NYSE Arca
VANECK JR GOLD MINERS	USD	46.89	-0.30%	0.30%	-12.53%	-13.55%	NYSE Arca
SPDR BBG BARC HIGH YIELD BND	USD	110.00	0.02%	0.04%	0.85%	0.97%	NYSE Arca
VANGUARD REAL ESTATE ETF	USD	103.65	0.35%	1.83%	-0.10%	22.04%	NYSE Arca
GRAYSCALE BITCOIN TRUST BTC	USD	28.75	0.10%	-3.56%	-2.76%	-10.16%	OTC US

USA Treasury Bonds Yield Curve (%)



Source: Bloomberg

# LIMA

## Stocks

	Ticker	Currency	Price	1D*	5D*	30D*	YTD*	Frequency	Volume (US\$)	Beta	Dividend Yield (%)	Price Earning	Market Cap. (M US\$)	Economic Sector*	Index Weight
-	ALICORC1 PE**	S/.	6.00	0.00%	-1.13%	-3.06%	-9.91%	100.00%	678,085	1.00	4.17	11.32	1,293.13	Industrial	3.53%
▲	ATACOBC1 PE**	S/.	0.10	0.00%	0.00%	-9.09%	-27.54%	36.84%	58	1.17	0.00	-	23.87	Mining	1.02%
▲	BACKUS1 PE**	S/.	19.00	3.83%	5.56%	5.50%	-5.71%	89.47%	15,629	0.74	6.77	9.17	6,381.61	Industrial	0.82%
▼	BAP PE**	US\$	119.48	-0.43%	-1.44%	-10.84%	-25.60%	100.00%	240,770	1.15	0.00	-	11,276.80	Diverse	5.82%
▼	BVN PE**	US\$	8.70	-0.23%	-3.44%	-23.08%	-27.50%	89.47%	170,140	1.11	0.00	-	2,393.91	Mining	5.88%
▲	CASAGRC1 PE**	S/.	4.25	5.99%	1.92%	1.43%	-10.53%	78.95%	6,368	1.22	17.60	3.13	90.43	Agricultural	1.31%
▼	BBVAC1 PE**	S/.	1.88	-1.05%	-2.08%	5.20%	-10.31%	94.74%	3,444	1.09	2.32	27.79	3,209.46	Finance	2.85%
-	CORARE1 PE**	S/.	1.09	0.00%	-0.91%	17.20%	22.47%	100.00%	40,276	1.36	18.66	3.49	352.37	Industrial	1.72%
-	CPACASC1 PE**	S/.	4.95	0.00%	-2.94%	-12.08%	-6.60%	94.74%	40,463	0.71	15.96	35.36	581.67	Industrial	2.38%
▲	CVERDEC1 PE**	US\$	16.35	2.06%	-3.88%	-10.31%	-21.85%	94.74%	18,510	1.45	3.49	9.36	5,723.42	Mining	5.25%
▼	ENGEPEC1 PE**	S/.	1.99	-2.93%	-5.24%	-2.93%	-0.50%	57.89%	10,050	0.68	9.92	12.16	1,426.94	Public Services	1.44%
-	ENDISPC1**	S/.	3.85	0.00%	0.00%	-8.33%	-28.70%	26.32%	2,835	0.78	0.00	8.66	621.00	Public Services	0.98%
▲	FERREY1 PE**	S/.	1.61	0.62%	0.00%	7.33%	-7.47%	100.00%	108,338	1.09	11.31	7.11	396.79	Diverse	4.90%
▲	AENZAC1 PE**	S/.	1.38	0.00%	2.22%	10.40%	-20.69%	94.74%	60,815	0.74	0.00	-	303.93	Diverse	4.05%
▼	IFS PE**	US\$	23.96	-1.60%	-5.18%	-12.11%	-22.56%	89.47%	18,118	1.19	3.21	14.29	2,766.13	Diverse	7.22%
▲	INRETC1 PE**	US\$	36.25	0.69%	3.57%	3.90%	-7.53%	100.00%	831,060	0.82	1.88	78.56	3,726.77	Diverse	5.28%
▼	LUSURC1 PE**	S/.	11.01	-2.57%	-2.57%	-8.17%	-56.82%	68.42%	18,572	0.72	10.13	11.93	1,354.25	Public Services	1.81%
▼	MINSURI1 PE**	S/.	2.44	-0.81%	-6.87%	-6.15%	31.89%	100.00%	13,086	0.96	13.69	4.69	1,776.89	Mining	3.09%
-	PML PE**	US\$	0.10	0.00%	3.09%	-3.85%	-5.66%	52.63%	13,200	1.42	0.00	-	26.44	Mining	2.12%
-	RELAPAC1 PE**	US\$	0.15	0.00%	-6.25%	38.89%	117.39%	100.00%	7,578	1.15	0.00	3.85	315.21	Industrial	2.12%
-	SCCO PE**	US\$	62.00	0.00%	-3.65%	-9.09%	-5.92%	94.74%	122,284	0.97	0.00	21.54	47,930.54	Mining	2.14%
-	SIDERC1 PE**	S/.	1.01	0.00%	-1.94%	14.77%	18.82%	84.21%	3,131	0.94	0.00	5.05	226.53	Industrial	1.43%
▲	TV PE**	US\$	0.18	0.56%	0.56%	-6.70%	23.13%	89.47%	5,412	1.24	0.00	-	179.03	Mining	2.93%
-	UNACEMC1 PE**	S/.	1.30	0.00%	-2.99%	-0.76%	-16.13%	100.00%	3,774	1.15	2.00	10.26	597.03	Industrial	3.00%
▲	VOLCABC1 PE**	S/.	0.49	1.25%	-6.54%	-21.61%	-6.54%	100.00%	18,931	1.59	0.00	-	500.45	Mining	5.90%
-	NEXAPEC1 PE**	S/.	3.04	0.00%	0.00%	-1.94%	7.42%	42.11%	50,286	1.10	0.00	22.97	1,015.48	Mining	1.56%

Quantity of shares: 26  
 Source: Bloomberg, Económica  
 \* Bloomberg Industry Classification System  
 \*\* PER is used in the stock market and original currency of the instrument  
 \*Legend: Variation 1D: 1 Day; 5D: 5 Days, 1M: 1 Month; YTD: Var.% 12/31/20 to date

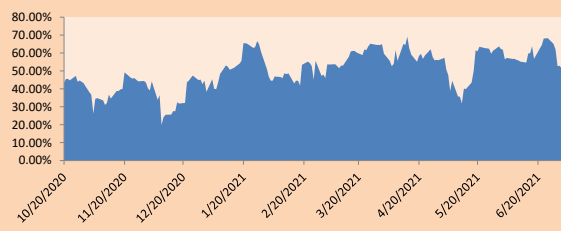
### Sectorial Indices

		Close	1D*	5D*	30D*	YTD*	Beta
▲	S&P/BVLMining	382.67	0.25%	-1.23%	-12.50%	-1.87%	0.97
▲	S&P/BVLConsumer	1,050.21	1.09%	2.15%	5.05%	-3.53%	0.81
▲	S&P/BVLIndustrials	185.08	0.18%	-1.05%	5.13%	-2.88%	0.89
▼	S&P/BVLFinancials	852.25	-0.34%	0.90%	-9.91%	-17.57%	1.10
-	S&P/BVLConstruction	199.83	0.00%	-1.33%	3.55%	-4.44%	0.80
▼	S&P/BVLPublicSvcs	517.62	-0.99%	-1.81%	-3.93%	-15.71%	0.42
▼	S&P/BVLElectricUtil	505.33	-1.00%	-1.81%	-3.93%	-15.71%	0.42

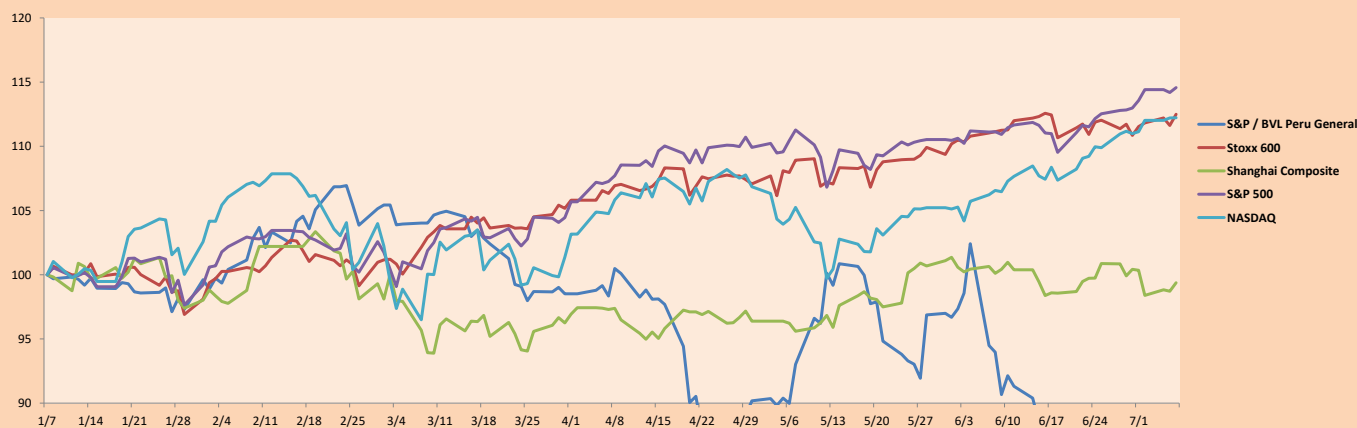
S&P/BVLConstructionTRPEN

\*Legend: Variation 1D: 1 Day; 5D: 5 Days, 1M: 1 Month; YTD: Var.% 12/31/20 to date

Correlation Graph of Returns of Mining Index against Metallic Index of London (3 months)



Indices (6 months)



Base: 07/01/21=100  
 Source: Bloomberg

Capital Market Laboratory Coordinator: Economist Bruno Bellido  
 Collaboration: María Camarena, Alonso García, Adrian Paredes and Jairo Valverde  
 email: pulsobursatil@ulima.edu.pe  
 facebook: www.facebook.com/pulsobursatil.ul

## SOVEREIGN RATING

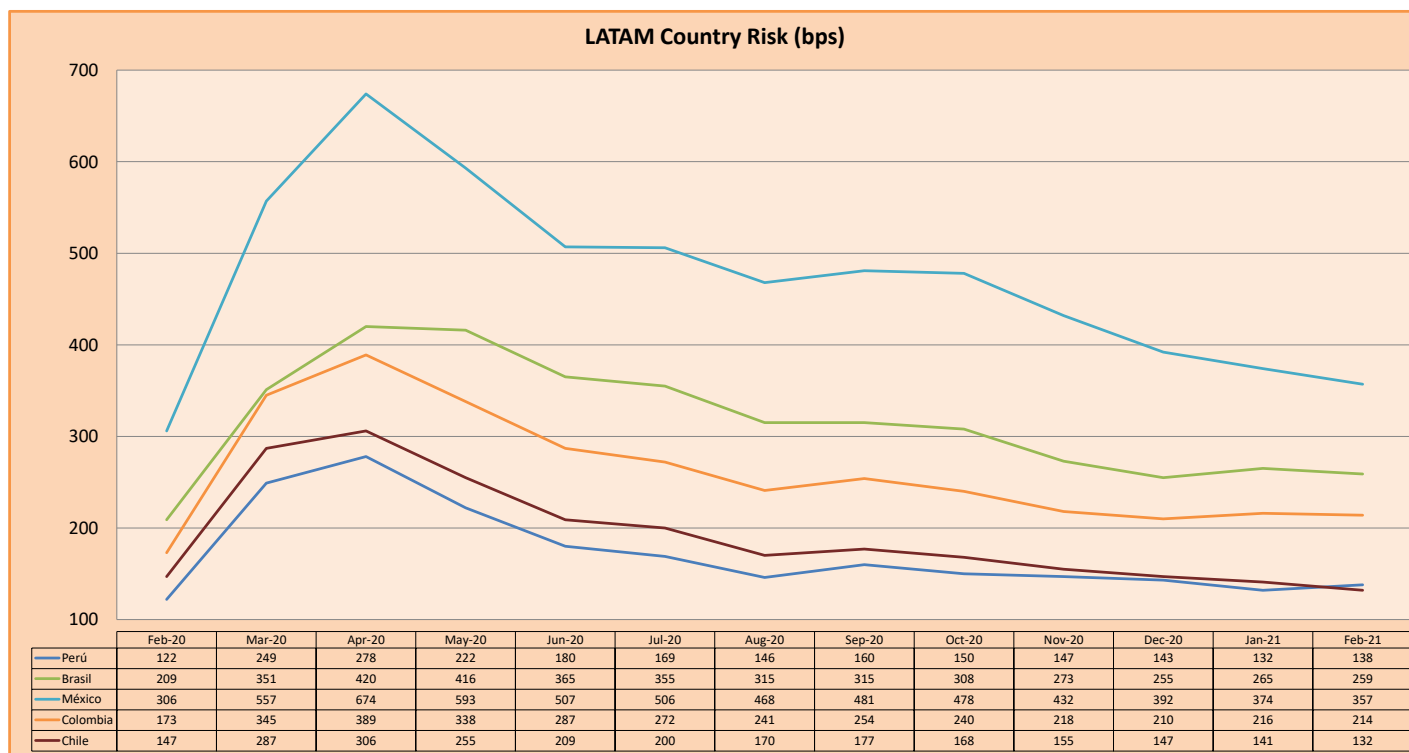
### RISK RATINGS

Moody's	S&P	Fitch		
Aaa	AAA	AAA	Prime	
Aa1	AA+	AA+	High credit quality	
Aa2	AA	AA		
Aa3	AA-	AA-		
A1	A+	A+	Medium-high grade, with low credit risk	
A2	A	A		
A3	A-	A-		
Baa1	BBB+	BBB+	Moderate Credit Risk	
Baa2	BBB	BBB		
Baa3	BBB-	BBB-		
Ba1	BB+	BB+	It has speculative elements and it is subject to substantial credit risk	
Ba2	BB	BB		
Ba3	BB-	BB-		
B1	B+	B+	It is considered speculative and it has high credit risk	
B2	B	B		
B3	B-	B-		
Caa1	CCC+	CCC	Bad credit conditions and it is subject to high credit risk	
Caa2	CCC			
Caa3	CCC-			
Ca	C	DDD	Very close to default or in default	
C	D			DD
				D

Source: Bloomberg

Latin America Credit Rating			
Clasificadora de riesgo			
Country	Moody's	Fitch	S&P
Peru	A3	BBB+	BBB+
México	Ba2	BB-	BB-
Venezuela	C	WD	SD
Brazil	Ba2	BB-	BB-
Colombia	Baa2	BB+	BB+
Chile	A1	A-	A
Argentina	Ca	WD	CCC+
Panama	Baa2	BBB-	BBB

Source: Bloomberg



Source: BCRP

Capital Market Laboratory Coordinator: Economist Bruno Bellido  
Collaboration: María Camarena, Alonso García, Nicolás Muñoz, Adrián Paredes y Jairo Valverde  
email: [pulsobursatil@ulima.edu.pe](mailto:pulsobursatil@ulima.edu.pe)  
facebook: [www.facebook.com/pulsobursatil.ul](https://www.facebook.com/pulsobursatil.ul)