

PULSO BURSÁTIL

FACULTAD DE CIENCIAS EMPRESARIALES Y ECONÓMICAS
CARRERA DE ECONOMÍA
LABORATORIO DE MERCADO DE CAPITALES

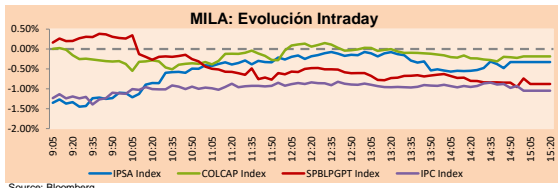


MILA

Lima, July 8, 2021

Main Indexes	Close	1 D	5 D	1 M	YTD	Cap. Burs. (US\$ bill)
▼ IPSA (Chile)	4,188.16	-0.43%	-3.62%	0.38%	0.26%	114.09
▼ IGPA (Chile)	21,034.08	-0.44%	-3.50%	-0.07%	0.13%	136.24
▼ COLCAP (Colombia)	945.26	-0.93%	-1.50%	-3.96%	-10.74%	4.37
▼ COLCAP (Colombia)	1,284.04	-0.19%	2.82%	2.02%	-10.70%	76.93
▼ S&P/BVL (Perú)*	18,637.80	-0.88%	-0.20%	-8.57%	-10.49%	89.32
▼ S&P/BVL SEL (Perú)	492.39	-1.12%	0.59%	-4.16%	-10.70%	80.36
▼ S&P/BVL LIMA 25	24,433.74	-0.60%	0.02%	-2.51%	-3.04%	88.55
▼ IPC (México)	49,570.87	-0.96%	-1.60%	-2.54%	12.49%	305.74
▼ S&P MILA 40	465.93	-0.69%	-2.79%	-6.04%	-12.85%	6,112.14

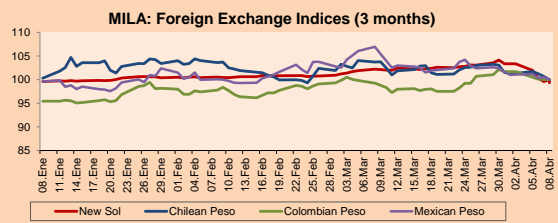
*Legend: Variation 1D: 1 day; 5D: 5 days; 1M: 1 Month; YTD: Var% 12/31/20 to date



Source: Bloomberg

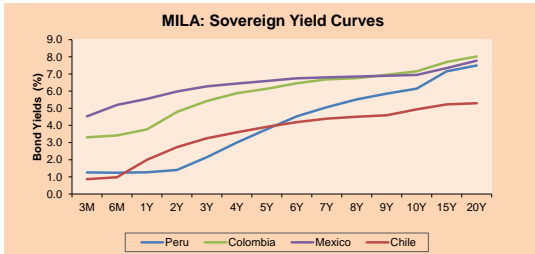
Currency	Price	1D*	5D*	30 D*	YTD*
▼ Sol (PEN)	3,9578	-0.03%	2.08%	0.67%	9.39%
▲ Chilean Peso (CLP)	752.90	0.54%	1.55%	4.89%	5.78%
▲ Colombian Peso (COP)	3,843.38	0.31%	1.55%	6.62%	12.06%
▲ Mexican Peso (MXN)	19.99	0.24%	-0.04%	1.43%	0.39%

*Legend: Variation 1D: 1 day; 5D: 5 days; 1M: 1 Month; YTD: Var% 12/31/20 to date



Base: 08/04/21=100
Source: Bloomberg

Fixed Income	Currency	Price	Bid Yield (%)	Ask Yield (%)	Duration
PERU 7.35 07/21/25	USD	122.792	1.55	1.44	3.51
PERU 4.125 08/25/27	USD	112.491	2.00	1.90	5.44
PERU 8.75 11/21/33	USD	158.898	3.05	2.97	8.70
PERU 6.55 03/14/37	USD	139.52	3.33	3.27	10.32
PERU 5.625 11/18/2050	USD	140.77	3.42	3.40	16.77
CHILE 2.25 10/30/22	USD	102.465	0.53	0.17	1.29
CHILE 3.125 01/21/26	USD	108.611	1.23	1.11	4.22
CHILE 3.625 10/30/42	USD	108.433	3.11	3.06	15.35
COLOM 11.85 03/09/28	USD	158.869	2.44	2.11	5.06
COLOM 10.375 01/28/33	USD	150.302	4.79	4.58	7.53
COLOM 7.375 09/18/37	USD	131.902	4.60	4.53	10.31
COLOM 6.125 01/18/41	USD	118.562	4.70	4.64	11.96
MEX 4 10/02/23	USD	118.562	4.696	4.636	11.96
MEX5.55 01/45	USD	122.453	4.08	4.04	14.05



Source: Bloomberg

Equity

Largest gains	Exchange	Currency	Price	▲%
CENCOSUD SHOPPIN	Chile	CLP	1190.00	2.58
BANCO DAVIVIENDA	Colombia	COP	29350.00	2.48
ANDINA-PREF B	Chile	CLP	1660.00	2.39
CENCOSUD SA	Chile	CLP	1357.70	1.70
MEGACABLE-CPO	Mexico	MXN	70.85	1.32

Per Turnover	Exchange	Amount (US\$)
FOMENTO ECON-UBD	Mexico	42,299,388
GRUPO F BANORT-O	Mexico	34,839,103
WALMART DE MEXIC	Mexico	31,281,725
GRUMA SAB-B	Mexico	31,220,593
GRUPO MEXICO-B	Mexico	28,197,948

Largest losses	Exchange	Currency	Price	▼%
GRUPO F BANORT-O	Mexico	MXN	125.02	-3.28
BUENAVENTURA-ADF	Peru	USD	8.46	-2.76
CERVEZAS	Chile	CLP	7687.1	-2.69
EMPRESAS COPEC	Chile	CLP	6770	-2.59
GRUPO TELEV-CPO	Mexico	MXN	52.64	-2.46

Per Volume	Exchange	Volume
ITAU CORPBANCA	Chile	173,935,731
BANCO SANTANDER	Chile	106,903,215
ENEL AMERICAS SA	Chile	74,299,047
BANCO DE CHILE	Chile	63,975,350
COLBUN SA	Chile	34,492,455

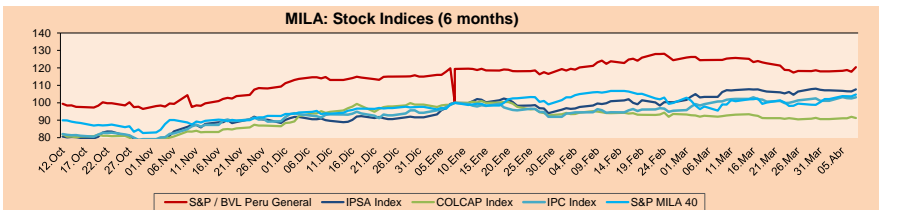
MILA

Peru: The General Index of the BVL ended today's session with a negative result of -0.88%. The index maintains an annual accumulated negative trend of -10.49% in local currency, while the adjusted return in dollars amounts to -18.18%. Then, the S&P / BVL Peru SEL varied by -1.12% while the S&P / BVL LIMA 25 by -0.60%. The PEN spot reached 5 / 3.9578. Headline: AFP and CTS withdrawals, the key factor that will determine consumption in the short term

Chile: The IPSA index ended the day with a negative return of -0.43%. The sectors that benefited the least from the session were Energy (-2.59%) and Information Technology (-1.71%). The worst performing stocks were Inversiones CIA Cervercerías Unidas (-2.69%) and Empresas Copec SA (-2.59%). Headline: The labor market fails to rebound and 200,000 jobs were lost in June

Colombia: The COLCAP index closed today with a negative return of -0.19%. The least benefited sectors of the day were Non-Basic Consumer Products (-4.46%) and Communication Services (-1.93%). The worst performing stocks were Organización SA (4.46%) and Corp. Fin. Colombiana-Pref SEC (-3.85%). Headline: Merchants reject IACHR report on blockades

Mexico: The IPC index closed the day with a negative return of -0.96%. The sectors that benefited the least from the session were Finance (-1.86%) and Materials (-1.56%). The worst performing stocks were Grupo Financiero Banorte (-3.28%) and Grupo Televisa SAB-SER CPO (-2.46%). Headline: Without profound changes in productivity, Mexico will return to pre-pandemic stagnation: Cepal

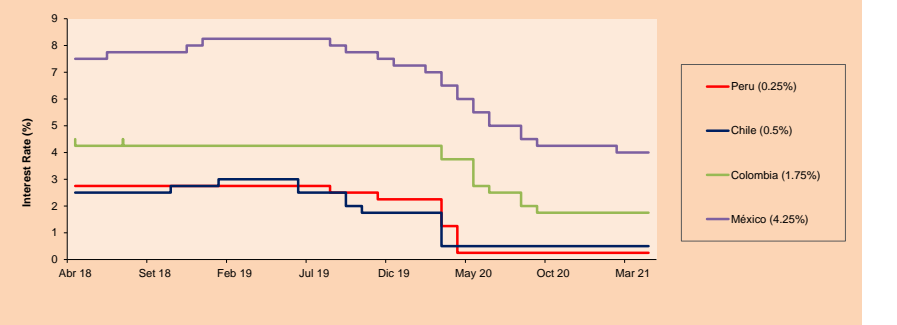


Base: 12/10/20=100
Source: Bloomberg

ETFs

ETFs	Curr.	Close	1D	5D	30 D	YTD	Exchange
▲ iShares MSCI All Peru Caped Index Fund	USD	28.55	0.04%	-1.89%	-9.71%	-17.68%	NYSE Arca
▲ iShares MSCI All Chile Caped Index Fund	USD	27.24	-1.38%	-5.48%	-6.33%	-9.83%	Cboe BZX
▼ Global X MSCI Colombia	USD	9.875	-1.05%	-0.50%	-5.18%	-13.07%	NYSE Arca
▼ iShares MSCI Mexico Capped	USD	47.22	-1.34%	-1.56%	-5.01%	9.84%	NYSE Arca
▼ iShares MSCI Emerging Markets	USD	52.64	-2.08%	-4.01%	-5.05%	1.88%	NYSE Arca
▼ Vanguard FTSE Emerging Markets	USD	52.03	-1.90%	-3.68%	-4.64%	3.83%	NYSE Arca
▼ iShares Core MSCI Emergina Markets	USD	64.29	-1.95%	-3.57%	-4.61%	3.63%	NYSE Arca
▼ iShares JP Morgan Emerging Markets Bonds	USD	62.44	-1.39%	-2.47%	-3.97%	2.23%	Cboe BZX
▼ Morgan Stanley Emerging Markets Domestic	USD	6.01	-0.83%	-1.46%	-4.30%	-4.45%	New York

MILA: Policy Rate



Source: Bloomberg

Capital Market Laboratory Coordinator: Economist Bruno Bellido
 Colaboración: María Camarena, Alonso García, Adrián Paredes y Jairo Valverde
 email: pulsobursatil@ulima.edu.pe
 facebook: www.facebook.com/pulsobursatil

The content of this document is just for informational purposes. The information and opinions expressed should not be considered as recommendations for future decisions. Under any circumstances, the Capital Market Laboratory of University of Lima will be responsible for the use of the statements in this document.

LIMA

Stocks

Ticker	Currency	Price	1D*	5D*	30D*	YTD*	Frequency	Volume (US\$)	Beta	Dividend Yield (%)	Price Earning	Market Cap. (M US\$)	Economic Sector*	Index Weight
▼ ALICORC1 PE**	S/.	5.95	-0.93%	-1.50%	-3.96%	-10.74%	100.00%	107,032	1.00	4.20	11.23	1,282.41	Industrial	3.53%
▼ ATACOCB1 PE**	S/.	0.10	0.00%	0.00%	-13.04%	-27.54%	44.44%	58	1.17	0.00	-	23.87	Mining	1.02%
- BACKUSH1 PE**	S/.	19.00	0.00%	5.56%	5.50%	-5.71%	94.44%	7,921	0.74	6.77	9.17	6,383.38	Industrial	0.82%
▼ BAP PE**	US\$	119.00	-0.40%	-1.57%	-11.03%	-25.90%	100.00%	540,674	1.15	0.00	-	11,231.50	Diverse	5.82%
▼ BVN PE**	US\$	8.46	-2.76%	-5.69%	-22.88%	-29.50%	100.00%	109,827	1.11	0.00	-	2,327.87	Mining	5.88%
- CASAGRC1 PE**	S/.	4.25	0.00%	6.25%	8.97%	-10.53%	88.89%	6,370	1.22	0.00	3.13	90.45	Agricultural	1.31%
▼ BBVAC1 PE**	S/.	1.85	-1.60%	-1.60%	-2.32%	-11.74%	100.00%	26,683	1.09	2.36	27.34	3,159.12	Finance	2.85%
▼ CORAREH1 PE**	S/.	1.08	-0.92%	-1.82%	16.13%	21.35%	100.00%	68,674	1.36	18.83	3.46	352.01	Industrial	1.72%
▼ CPACASC1 PE**	S/.	4.94	-0.20%	-2.18%	-12.72%	-6.79%	94.44%	36,348	0.71	15.99	35.29	580.76	Industrial	2.38%
▼ CVERDEC1 PE**	US\$	16.20	-0.92%	-1.82%	-6.90%	-22.56%	100.00%	50,913	1.45	3.53	9.28	5,670.91	Mining	5.25%
- ENGEPEC1 PE**	S/.	1.99	0.00%	-5.24%	0.00%	-0.50%	83.33%	10,053	0.68	0.00	12.16	1,427.34	Public Services	1.44%
- ENDISPC1**	S/.	3.85	0.00%	0.00%	-7.23%	-28.70%	44.44%	19,160	0.78	4.43	8.66	621.17	Public Services	0.98%
▲ FERREYC1 PE**	S/.	1.63	1.24%	5.84%	10.14%	-6.32%	100.00%	521,395	1.09	11.17	7.20	401.83	Diverse	4.90%
- AENZAC1 PE**	S/.	1.38	0.00%	2.22%	15.00%	-20.69%	88.89%	71,899	0.74	0.00	-	304.02	Diverse	4.05%
▼ IFS PE**	US\$	23.74	-0.92%	-3.06%	-11.35%	-23.27%	100.00%	67,205	1.19	3.24	14.16	2,740.73	Diverse	7.22%
▼ INRETC1 PE**	US\$	35.90	-0.97%	2.57%	1.70%	-8.42%	100.00%	602,748	0.82	1.90	77.82	3,690.78	Diverse	5.28%
▲ LUSURC1 PE**	S/.	11.05	0.36%	-2.21%	-7.14%	-56.67%	100.00%	19,698	0.72	10.09	11.97	1,359.55	Public Services	1.81%
▼ MINSUR1 PE**	S/.	2.39	-2.05%	-7.00%	-8.78%	29.19%	94.44%	152,562	0.96	13.98	4.60	1,740.96	Mining	3.09%
- PML PE**	US\$	0.10	0.00%	3.09%	-4.76%	-5.66%	72.22%	13,200	1.42	0.00	-	26.44	Mining	2.12%
▲ RELAPAC1 PE**	S/.	0.16	3.33%	-3.13%	37.17%	124.64%	94.44%	24,889	1.15	0.00	3.98	325.81	Industrial	2.12%
- SCCO PE**	US\$	62.00	0.00%	-1.59%	-9.88%	-5.92%	88.89%	122,284	0.97	0.00	21.54	47,930.54	Mining	2.14%
▲ SIDERC1 PE**	S/.	1.02	0.99%	0.99%	9.68%	20.00%	88.89%	1,683	0.94	22.01	5.10	228.83	Industrial	1.43%
▼ TV PE**	US\$	0.18	-0.55%	0.00%	-9.09%	22.45%	94.44%	30,941	1.24	0.00	-	178.04	Mining	2.93%
▼ UNACEMC1 PE**	S/.	1.28	-1.54%	-3.03%	-7.91%	-17.42%	94.44%	13,110	1.15	3.59	10.11	588.00	Industrial	3.00%
▼ VOLCABC1 PE**	S/.	0.48	-1.23%	-4.00%	-20.00%	-7.69%	100.00%	39,562	1.59	0.00	-	494.40	Mining	5.90%
▼ NEXAPEC1 PE**	S/.	2.95	-2.96%	-2.96%	-9.51%	4.24%	72.22%	1,418	1.10	0.00	22.28	985.98	Mining	1.56%

Quantity of shares: 26
 Source: Bloomberg, Económática
 * Bloomberg Industry Classification System
 ** PER is used in the stock market and original currency of the instrument
 *Legend: Variation 1D: 1 Day; 5D: 5 Days, 1M: 1 Month; YTD: Var.% 12/31/20 to date

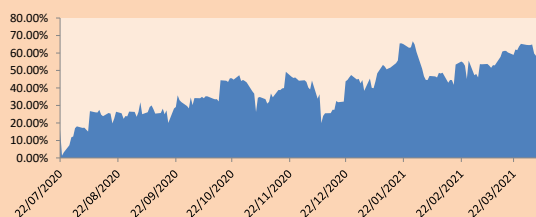
Sectorial Indices

	Close	1D*	5D*	30D*	YTD*	Beta
▼ S&P/BVLMining	379.26	-0.89%	-0.82%	-12.80%	-2.74%	0.95
▼ S&P/BVLConsumer	1,042.04	-0.78%	3.00%	3.27%	-4.28%	0.39
▲ S&P/BVLIndustrials	185.75	0.36%	1.09%	4.83%	-2.52%	0.48
▼ S&P/BVLFinancials	847.90	-0.51%	0.51%	-10.08%	-17.99%	1.77
▼ S&P/BVLConstruction	199.68	-0.08%	-0.63%	2.12%	-4.51%	0.53
▼ S&P/BVLPublicSvcs	514.13	-0.67%	-2.47%	-3.46%	-16.28%	0.13
▼ S&P/BVLElectricUtil	501.92	-0.67%	-2.47%	-3.46%	-16.28%	0.13

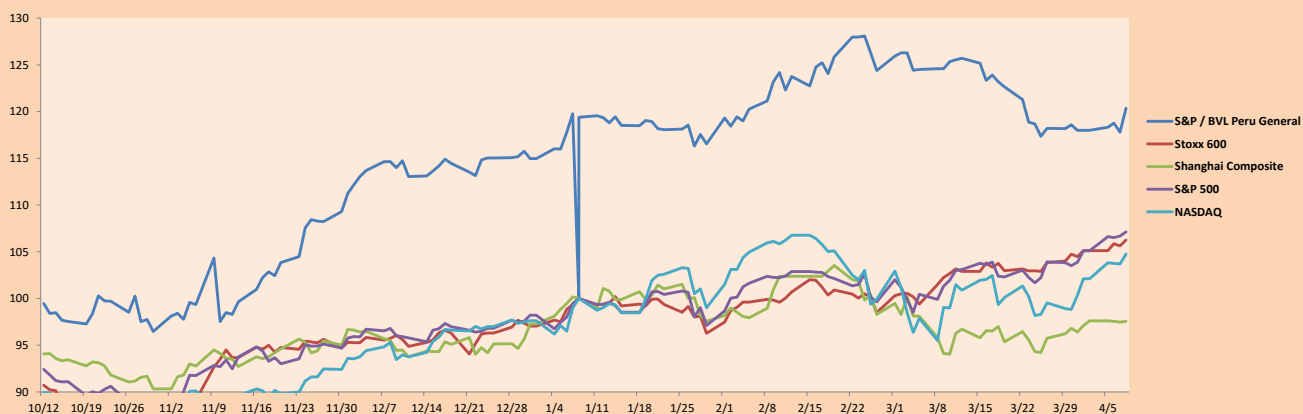
S&P/BVLConstructionTRPEN

*Legend: Variation 1D: 1 Day; 5D: 5 Days, 1M: 1 Month; YTD: Var.% 12/31/20 to date

Correlation Graph of Returns of Mining Index against Metallic Index of London (3 months)



Indices (6 months)



Base: 08/01/21=100
 Source: Bloomberg

Capital Market Laboratory Coordinator: Economist Bruno Bellido
 Collaboration: Maria Camarena, Alonso García, Adrian Paredes y Jairo Valverde
 email: pulsobursatil@ulima.edu.pe
 facebook: www.facebook.com/pulsobursatil

The content of this document is just for informational purposes. The information and opinions expressed should not be considered as recommendations for future decisions. Under any circumstances, the Capital Market Laboratory of University of Lima will be responsible for the use of the statements in this document.

SOVEREIGN RATING

RISK RATINGS

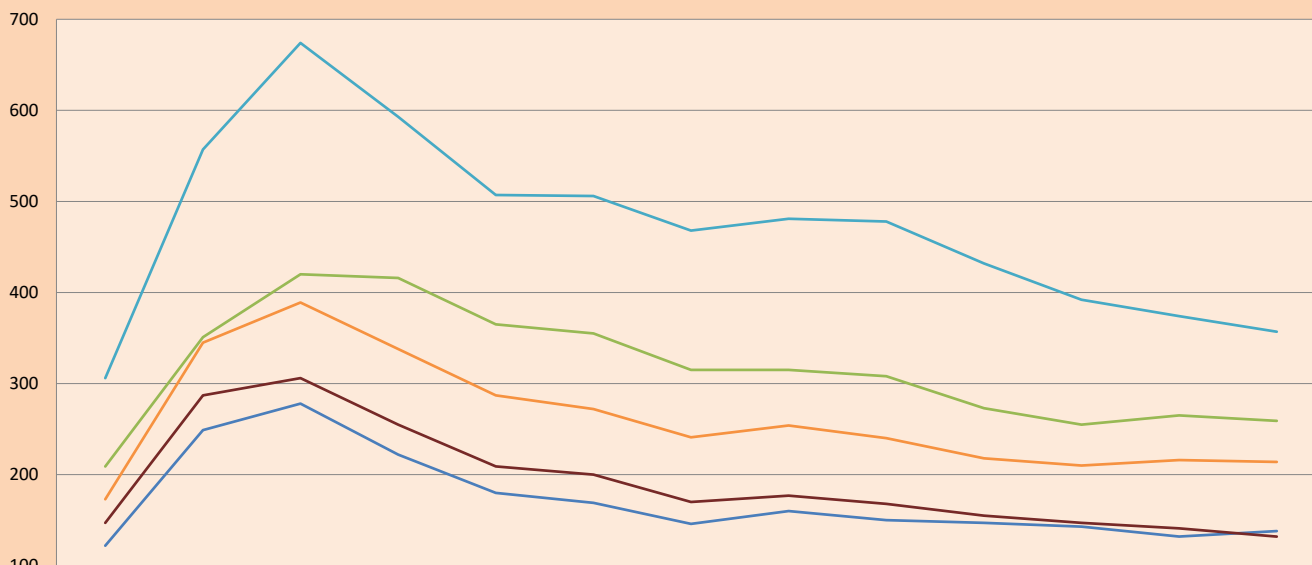
Moody's	S&P	Fitch		
Aaa	AAA	AAA	Prime	
Aa1	AA+	AA+	High credit quality	
Aa2	AA	AA		
Aa3	AA-	AA-		
A1	A+	A+	Medium-high grade, with low credit risk	
A2	A	A		
A3	A-	A-		
Baa1	BBB+	BBB+	Moderate Credit Risk	
Baa2	BBB	BBB		
Baa3	BBB-	BBB-		
Ba1	BB+	BB+	It has speculative elements and it is subject to substantial credit risk	
Ba2	BB	BB		
Ba3	BB-	BB-		
B1	B+	B+	It is considered speculative and it has high credit risk	
B2	B	B		
B3	B-	B-		
Caa1	CCC+	CCC	Bad credit conditions and it is subject to high credit risk	
Caa2	CCC			
Caa3	CCC-			
Ca	C	DDD	Very close to default or in default	
C	D			DD
				D

Source: Bloomberg

Latin America Credit Rating			
Clasificadora de riesgo			
Country	Moody's	Fitch	S&P
Peru	A3	BBB+	BBB+
México	Ba2	BB-	BB-
Venezuela	C	WD	SD
Brazil	Ba2	BB-	BB-
Colombia	Baa2	BB+	BB+
Chile	A1	A-	A
Argentine	Ca	WD	CCC+
Panama	Baa2	BBB-	BBB

Source: Bloomberg

LATAM Country Risk (bps)



	Feb-20	Mar-20	Abr-20	May-20	Jun-20	Jul-20	Ago-20	Set-20	Oct-20	Nov-20	Dic-20	Ene-21	Feb-21
Perú	122	249	278	222	180	169	146	160	150	147	143	132	138
Brasil	209	351	420	416	365	355	315	315	308	273	255	265	259
México	306	557	674	593	507	506	468	481	478	432	392	374	357
Colombia	173	345	389	338	287	272	241	254	240	218	210	216	214
Chile	147	287	306	255	209	200	170	177	168	155	147	141	132

Source: BCRP

Capital Market Laboratory Coordinator: Economist Bruno Bellido
Collaboration: María Camarena, Alonso García, Adrian Paredes y Jairo Valverde
email: pulsobursatil@ulima.edu.pe
facebook: www.facebook.com/pulsobursatil.ul