

PULSO BURSÁTIL

FACULTAD DE CIENCIAS EMPRESARIALES Y ECONÓMICAS
CARRERA DE ECONOMÍA
LABORATORIO DE MERCADO DE CAPITALES

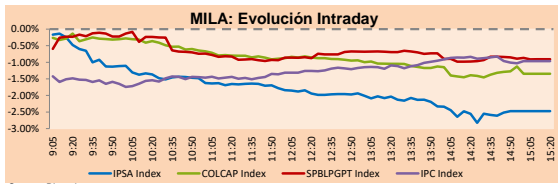


MILA

Lima, July 6, 2021

Main Indexes	Close	1 D	5 D	1 M	YTD	Cap. Burs. (US\$ bill)
▼ IPSA (Chile)	4,165.81	-2.84%	-3.65%	0.83%	-0.27%	113.50
▼ IGPA (Chile)	20,949.66	-2.71%	-3.42%	0.45%	-0.28%	135.78
▼ COLCAP (Colombia)	954.09	-1.56%	-2.80%	-2.99%	-9.91%	4.43
▼ COLCAP (Colombia)	1,272.05	-1.34%	0.09%	2.14%	-11.53%	77.49
▼ S&P/BVL (Perú)*	18,790.07	-0.91%	-0.98%	-8.33%	-9.76%	89.17
▼ S&P/BVL SEL (Perú)	495.93	-0.10%	-0.70%	-7.39%	-10.06%	80.14
▲ S&P/BVL LIMA 25	24,519.80	0.10%	-0.37%	-3.81%	-2.69%	88.40
▲ IPC (México)	50,048.89	-1.00%	-0.57%	-2.68%	13.57%	305.33
▼ S&P MILA 40	467.78	-3.41%	-3.55%	-4.98%	-12.50%	6,116.64

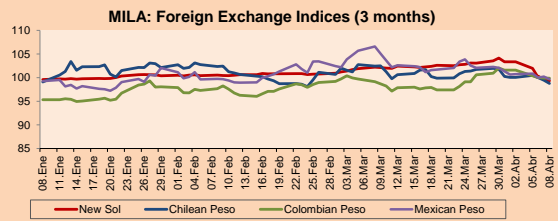
*Legend: Variation 1D: 1 day; 5D: 5 days; 1M: 1 Month; YTD: Var% 12/31/20 to date



Source: Bloomberg

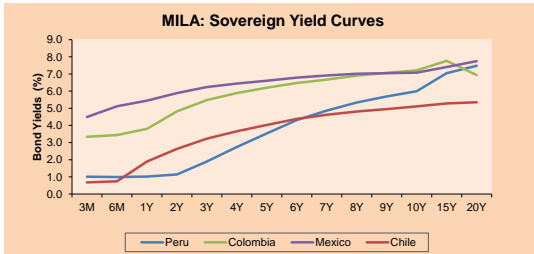
Currency	Price	1D*	5D*	30 D*	YTD*
▲ Sol (PEN)	3,9567	0.66%	1.56%	2.97%	9.36%
▲ Chilean Peso (CLP)	748.13	1.60%	2.81%	4.22%	5.11%
▲ Colombian Peso (COP)	3,787.46	1.18%	0.53%	5.21%	10.43%
▲ Mexican Peso (MXN)	20.03	0.90%	1.07%	0.37%	0.60%

*Legend: Variation 1D: 1 day; 5D: 5 days; 1M: 1 Month; YTD: Var% 12/31/20 to date



Base: 06/04/21=100
Source: Bloomberg

Fixed Income	Currency	Price	Bid Yield (%)	Ask Yield (%)	Duration
PERU 7.35 07/21/25	USD	122.778	1.57	1.46	3.51
PERU 4.125 08/25/27	USD	112.187	2.03	1.97	5.45
PERU 8.75 11/21/33	USD	157.973	3.11	3.05	8.69
PERU 6.55 03/14/37	USD	138.578	3.38	3.34	10.31
PERU 5.625 11/18/2050	USD	139.319	3.50	3.46	16.70
CHILE 2.25 10/30/22	USD	102.455	0.56	0.19	1.30
CHILE 3.125 01/21/26	USD	108.562	1.25	1.12	4.23
CHILE 3.625 10/30/42	USD	107.277	3.18	3.13	15.32
COLOM 11.85 03/09/28	USD	158.404	2.49	2.19	5.06
COLOM 10.375 01/28/33	USD	149.903	4.82	4.62	7.53
COLOM 7.375 09/18/37	USD	131.286	4.64	4.58	10.30
COLOM 6.125 01/18/41	USD	118.068	4.73	4.67	11.95
MEX 4 10/02/23	USD	118.068	4.731	4.671	11.95
MEX5.55 01/45	USD	121.431	4.14	4.10	14.02



Source: Bloomberg

Equity

Largest gains	Exchange	Currency	Price	▲%
FERREYCORP SAA	Peru	PEN	1.60	2.56
INRETAIL PERU CO	Peru	USD	36.00	1.41
COCA-COLA FEMSA	Mexico	MXN	105.27	0.96
CORFICOLOMBIANA	Colombia	COP	30000.00	0.91
GRUPO ARGOS SA	Colombia	COP	10590.00	0.86

Per Turnover	Exchange	Amount (US\$)
GRUPO MEXICO-B	Mexico	31,931,722
AMERICA MOVIL-L	Mexico	30,089,103
WALMART DE MEXIC	Mexico	23,744,785
CEMEX SAB-CPO	Mexico	18,812,419
AERO DEL PACIF-B	Mexico	16,772,769

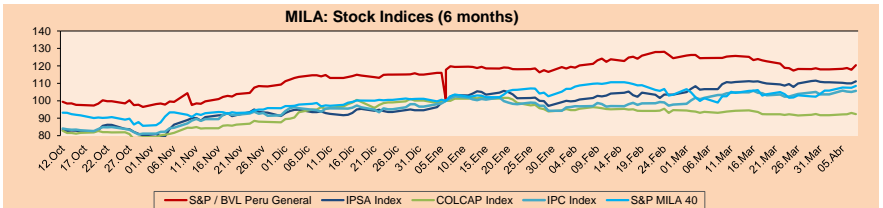
MILA

Peru: The General Index of the BVL ended today's session with a positive result of -0.98%. The index maintains an annual accumulated negative trend of -9.76% in local currency, while the adjusted return in dollars amounts to -17.48%. Then, the S&P / BVL Peru SEL varied by -0.10% while the S&P / BVL LIMA 25 by +0.10%. The PEN spot reached \$ / 3.9567. Head: Economy Commission approved alternative to transfer AFP funds to the financial system

Chile: The IPSA index ended the day with a negative return of -2.84%. The sectors that benefited the most from the session were Non-Basic Consumer Products (-2.66%) and Communication Services (-2.06%). The worst performing stocks were Inversiones Aguas Metropoli (6.20%) and Cencosud Shopping SA (-4.85%). Headline: Wall Street loses its records as the IPSA closes with its but day in a month

Colombia: The COLCAP index closed today with a negative return of -0.60%. The sectors that benefited the least from the session were Energy (1.97%) and Public Services (-1.10%). The worst performing stocks were Ecopetrol SA (-2.17%) and Bancolombia SA-Pref (2.14%). Headline: Oil deflates, closes lower after hitting record

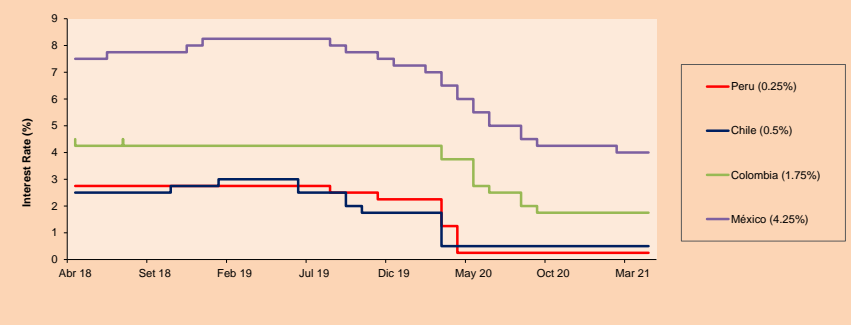
Mexico: The IPC index closed the day with a negative return of -1.00%. The sectors that benefited the least from the conference were Communication Services (-1.64%) and Materials (-1.00%). The worst performing stocks were Grupo Televisa SAB-CER (-5.15%) and Banco del Bajío (-2.89%) Headline: New variants of COVID, among the 4 major risks for the recovery of the world economy



Base: 12/10/20=100
Source: Bloomberg

ETFs	Curr.	Close	1D	5D	30 D	YTD	Exchange
▼ iShares MSCI All Peru Caped Index Fund	USD	28.43	-1.49%	-1.90%	-18.12%	-18.02%	NYSE Arca
▼ iShares MSCI All Chile Caped Index Fund	USD	27.52	-4.71%	-4.61%	-6.08%	-8.90%	Cboe BZX
▼ Global X MSCI Colombia	USD	10.03	-1.91%	0.20%	-2.81%	-11.71%	NYSE Arca
▼ iShares MSCI Mexico Capped	USD	47.65	-1.55%	-1.30%	-1.67%	10.84%	NYSE Arca
▼ iShares MSCI Emerging Markets	USD	53.82	-1.75%	-3.04%	-3.88%	4.16%	NYSE Arca
▼ Vanguard FTSE Emerging Markets	USD	52.99	-1.80%	-3.04%	-3.67%	5.75%	NYSE Arca
▼ iShares Core MSCI Emeraina Markets	USD	65.52	-1.74%	-2.88%	-3.70%	5.61%	NYSE Arca
▼ iShares JP Morgan Emerging Markets Bonds	USD	63.2	-0.97%	-1.82%	-3.32%	3.47%	Cboe BZX
▲ Morgan Stanley Emerging Markets Domestic	USD	6.11	0.16%	-1.29%	-3.02%	-2.86%	New York

MILA: Policy Rate



Source: Bloomberg

Capital Market Laboratory Coordinator: Economist Bruno Bellido
 Collaboration: María Camarena, Alonso García, Adrián Paredes y Jairo Valverde
 email: pulsobursatil@ulima.edu.pe
 facebook: www.facebook.com/pulsobursatil

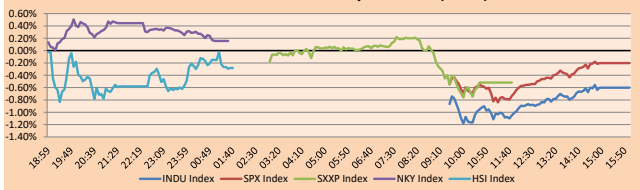
The content of this document is just for informational purposes. The information and opinions expressed should not be considered as recommendations for future decisions. Under any circumstances, the Capital Market Laboratory of University of Lima will be responsible for the use of the statements in this document.

WORLD

Main Indices	Close	1 D*	5 D*	1 M*	YTD*	Market Cap. (US\$ Mill.)
▼ Dow Jones (USA)	34,577.37	-0.60%	0.88%	-0.15%	12.97%	10,636,641
▼ Standard & Poor's 500 (EEUU)	4,343.54	-0.20%	1.23%	2.77%	15.64%	38,380,813
▲ NASDAQ Composite (USA)	14,663.64	0.17%	1.12%	5.63%	13.77%	24,535,083
▼ Stoxx Europe600 (Europe)	455.98	-0.52%	-0.09%	0.53%	14.27%	10,714,048
▼ DAX (Germany)	15,511.38	-0.96%	-1.14%	-1.06%	13.07%	1,175,835
▼ FTSE 100 (United Kingdom)	7,100.88	-0.89%	0.19%	0.33%	9.91%	1,487,803
▼ CAC 40 (France)	6,507.48	-0.91%	-0.91%	-0.55%	17.22%	1,821,633
▼ IBEX 35 (Spain)	8,860.80	-0.96%	-0.61%	-3.30%	9.75%	504,003
▼ MSCI AC Asia Pacific Index	206.10	-0.05%	-1.16%	-1.97%	3.09%	26,556,306
▼ HANG SENG (Hong Kong)	28,072.86	-0.25%	-4.08%	-3.36%	2.16%	4,315,353
▼ SHANGHAI SE Comp. (China)	3,530.26	-0.12%	-1.20%	-2.04%	1.52%	6,823,073
▲ NIKKEI 225 (Japan)	28,843.21	0.16%	-0.59%	-2.22%	3.40%	3,924,140
▲ S&P / ASX 200 (Australia)	7,261.78	-0.73%	-0.54%	0.37%	10.95%	1,738,295
▼ KOSPI (South Korea)	3,305.21	-1.00%	-0.57%	1.00%	14.31%	1,959,039

*Legend: Variation 1D: 1 Day; 5D: 5 Days; 1M: 1 Month; YTD: Var. % 12/31/20 to date

Global Markets: Intraday Evolution (var %)

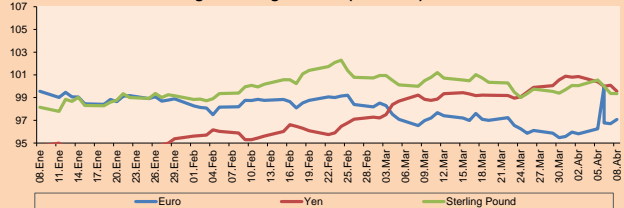


Source: Bloomberg

Currency	Price	1 D*	5 D*	1 M*	YTD*
▼ Euro	1.1824	-0.34%	-0.61%	-2.82%	-3.21%
▼ Yen	110.6300	-0.31%	0.09%	1.01%	7.15%
▼ Sterling Pound	1.3800	-0.32%	-0.28%	-2.52%	0.95%
▲ Yuan	6.4791	0.23%	0.24%	1.31%	-0.74%
▼ Hong Kong Dollar	7.7668	-0.01%	0.04%	0.13%	0.18%
▲ Brazilian Real	5.1994	2.05%	4.90%	2.97%	0.02%
▲ Argentine Peso	95.9244	0.04%	0.23%	1.12%	14.00%

*Legend: Variation 1D: 1 Day; 5D: 5 Days; 1M: 1 Month; YTD: Var. % 12/31/20 to date

Foreign Exchange Indices (3 months)

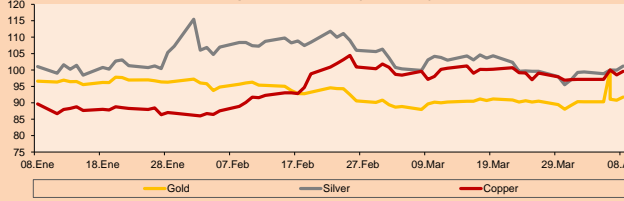


Base: 06/04/21=100
Source: Bloomberg

Commodities	Close	1 D*	5 D*	1 M*	YTD*
▲ Oro (US\$ Oz. T) (LME)	1,797.08	0.30%	2.03%	-5.00%	-5.34%
▼ Plata (US\$ Oz. T) (LME)	26.16	-1.21%	1.50%	-5.88%	-0.92%
▼ Cobre (US\$ TM) (LME)	9,281.04	-2.12%	-0.34%	-6.62%	19.77%
▼ Zinc (US\$ TM) (LME)	2,917.00	-0.39%	-1.10%	-2.43%	6.88%
▼ Petróleo WTI (US\$ Barril) (NYM)	73.37	-2.38%	0.53%	5.74%	51.68%
▼ Estiaino (US\$ TM) (LME)	32,778.00	-0.16%	-1.49%	-0.42%	59.55%
▼ Plomo (US\$ TM) (LME)	2,292.00	0.13%	-1.82%	7.64%	16.01%
▲ Azúcar #11 (US\$ Libra) (NYB-ICE)	17.87	-1.54%	1.89%	0.59%	27.29%
▲ Cacao (US\$ TM) (NYB-ICE)	2,286.00	-0.91%	-3.85%	-6.28%	-8.30%
▼ Café Arábica (US\$ TM) (NYB-ICE)	148.10	-3.23%	-7.55%	-9.50%	11.10%

*Legend: Variación 1D: 1 Día; 5D: 5 Días; 1M: 1 Mes; YTD: Var. % 31/12/20 a la fecha

Principal Metals Index (3 months)



Base: 06/04/21=100
Source: Bloomberg

Equity

Germany (Stocks from DAX Index)

Largest gains	Curr.	Price	▲%	Exchange	Largest losses	Curr.	Price	▼%	Exchange
DHER GY	EUR	119.65	2.79	Xetra	DBK GY	EUR	10.62	-4.13	Xetra
VNA GY	EUR	56.82	1.61	Xetra	DAI GY	EUR	72.91	-3.95	Xetra
MRK GY	EUR	165.55	1.35	Xetra	VOW5 GY	EUR	203	-3.88	Xetra
SAP GY	EUR	120.3	1.18	Xetra	BMW GY	EUR	86.03	-3.77	Xetra

Europe (Stocks from STOXX EUROPE 600)

Largest gains	Curr.	Price	▲%	Exchange	Largest losses	Curr.	Price	▼%	Exchange
MOR GY	EUR	66.78	5.17	Xetra	ALO FP	EUR	40.1	-8.43	EN Paris
NEL NO	NOK	20.25	4.95	Oslo	ENG SQ	EUR	18.63	-7.64	Soc.Bol SIBIE
HFG GY	EUR	85.96	4.93	Xetra	EDF FP	EUR	11.18	-6.05	EN Paris
TMV GY	EUR	31.94	4.65	Xetra	SAB SQ	EUR	0.5506	-5.53	Soc.Bol SIBIE

Global Overview:

United States:

The major U.S. indices closed the day with mixed returns as investors are concerned that the economy is nearing its peak and that a correction is on the way. Multiple data points such as market complacency, a combination of pressure on profit margins, inflation fears, FED tapering and possible higher taxes could contribute to an eventual downgrade. The market watched the yield on 10-year U.S. Treasury notes, which fell to 1.373% despite the drop from a nearly three-year high in the price of a barrel of oil. The Dow and S&P 500 fell on the day, with major financial stocks and other groups closely tied to economic growth falling. The S&P 500 bank index fell 2.5% with the drop in performance reaching its lowest level since February 24. On the equity side, we highlight the decline in Caterpillar -1.95%, Chevron -1.96% and JP Morgan Chase -1.68%, stocks focused on economic recovery. In turn, technology stocks such as Amazon +4.69%, Apple +1.47% and Alphabet +0.74% recorded positive results. Thus, DOW JONES -0.60%; S&P 500 -0.20%; NASDAQ +0.17% ended the day with mixed results.

Europe:

Europeans ended equities negatively as investors turned to bond purchases as markets have concerns about economic recovery risks. All major European indices ended lower, the pan-European index ended lower, with the Energy sector -2.42% being the most affected by the drop in oil prices. London's FTSE 100 posted its worst session in two weeks as yields on public debt in the euro zone fell to their lowest levels in nearly a month. Likewise, Germany's DAX was weighed down by the fall in manufactured products due to lower sales outside the euro area. On the other hand, the big oil companies BP, Royal Dutch Shell and Total fell by more than 2%, due to the fall in oil prices due to an OPEC dispute. On the other hand, an economic reopening and the liberation of the economy in Britain have boosted markets so far this month, despite the increased spread of the Delta variant of the coronavirus. Thus, the STOXX 600 -0.52%, CAC 40 -0.91%, FTSE 100 -0.89%, DAX -0.96% closed with negative returns.

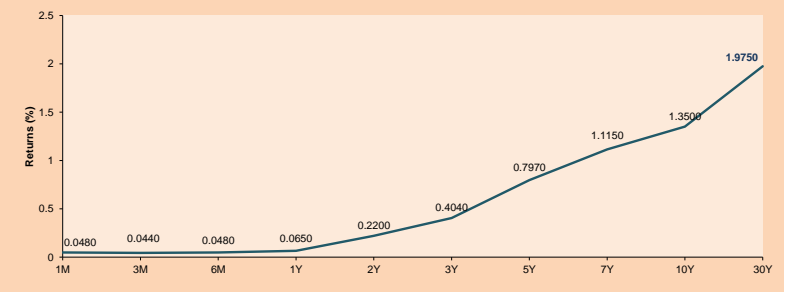
Asia:

The main indexes of the Asian continent ended the session with negative performances after weak data from the American services sector. On the other hand, the Chinese government announced that it will take measures against illegal activities in the stock market; likewise, it will verify the sources of financing for investment in securities and will control the leverage index. As such, Hong Kong stocks closed lower dragged down by the healthcare sector -5.1% after concerns over elevated valuations intensified. In corporate news, China's antitrust regulator will formally block Tencent Holdings Ltd's plan to merge the country's two major video game streaming sites, Huya and DouYu. Elsewhere, Japan's NIKKEI closed higher after gains in its major stocks; SoftBank group +1.01%; Fast Retailing +0.45% contained losses on concerns about a rise in COVID-19 infections. Similarly, the KOSPI remains at record highs driven by consumer appetite for electronics and rising chip prices. Thus, SHANGHAI COMPOSITE -0.11%; CSI 300 -0.05%; KOSPI +0.36%; NIKKEI +0.16%.

ETFs

	Curr.	Close	1D	5D	30 D	YTD	Exchange
SPDR S&P 500 ETF TRUST	USD	432.93	-0.18%	1.22%	2.44%	15.79%	NYSE Arca
ISHARES MSCI EMERGING MARKET	USD	53.82	-1.75%	-3.04%	-3.88%	4.16%	NYSE Arca
ISHARES IBOXX HIGH YLD CORP	USD	88.01	-0.06%	-0.02%	0.85%	0.81%	NYSE Arca
FINANCIAL SELECT SECTOR SPDR	USD	36.36	-1.57%	-0.47%	-5.48%	23.34%	NYSE Arca
VANECK GOLD MINERS	USD	34.52	0.29%	2.62%	-10.75%	-4.16%	NYSE Arca
ISHARES RUSSELL 2000 ETF	USD	225.86	-1.45%	-1.52%	-0.68%	15.20%	NYSE Arca
SPDR GOLD SHARES	USD	168.12	0.50%	2.00%	-5.10%	-5.74%	NYSE Arca
ISHARES 20+ YEAR TREASURY BO	USD	146.74	1.17%	2.11%	4.89%	-6.97%	NASDAQ GM
INVESCO QQQ TRUST SERIES 1	USD	360.19	0.43%	1.46%	7.33%	14.81%	NASDAQ GM
ISHARES BIOTECHNOLOGY ETF	USD	162.86	-1.14%	-0.45%	6.43%	7.51%	NASDAQ GM
ENERGY SELECT SECTOR SPDR	USD	52.91	-3.25%	-0.56%	-5.09%	39.60%	NYSE Arca
PROSHARES ULTRA VIX ST FUTUR	USD	28.04	3.35%	-1.06%	-17.97%	-73.67%	Cboe BZX
UNITED STATES OIL FUND LP	USD	49.90	2.02%	0.02%	5.59%	51.17%	NYSE Arca
ISHARES MSCI BRAZIL ETF	USD	38.33	-4.82%	-6.51%	-8.02%	3.40%	NYSE Arca
SPDR S&P OIL & GAS EXP & PR	USD	93.23	-4.07%	-1.75%	-3.31%	59.37%	NYSE Arca
UTILITIES SELECT SECTOR SPDR	USD	64.29	0.42%	1.48%	-1.68%	2.54%	NYSE Arca
ISHARES US REAL ESTATE ETF	USD	103.46	0.76%	0.92%	0.64%	20.79%	NYSE Arca
SPDR S&P BIOTECH ETF	USD	133.59	-2.15%	-1.58%	5.39%	-5.11%	NYSE Arca
ISHARES IBOXX INVESTMENT GRA	USD	134.86	0.36%	0.48%	2.10%	-2.37%	NYSE Arca
ISHARES JP MORGAN USD EMERGI	USD	112.25	0.12%	-0.05%	0.21%	-3.16%	NASDAQ GM
REAL ESTATE SELECT SECTOR SPDR	USD	45.12	0.89%	0.98%	1.26%	23.41%	NYSE Arca
ISHARES CHINA LARGE-CAP ETF	USD	44.22	-2.79%	-5.65%	-5.51%	-4.76%	NYSE Arca
CONSUMER STAPLES SPDR	USD	69.64	-0.41%	0.30%	-2.63%	3.25%	NYSE Arca
VANECK JR GOLD MINERS	USD	47.03	-0.91%	2.62%	-12.39%	-13.29%	NYSE Arca
SPDR RIBB BARO HIGH YIELD BND	USD	109.98	0.02%	0.00%	0.91%	0.95%	NYSE Arca
VANGUARD REAL ESTATE ETF	USD	103.29	0.73%	0.94%	0.73%	21.62%	NYSE Arca
GRAYSCALE BITCOIN TRUST BTC	USD	28.72	0.49%	-7.74%	-7.06%	-10.25%	OTC US

USA Treasury Bonds Yield Curve (%)



Source: Bloomberg

Capital Market Laboratory Coordinator: Economist Bruno Bellido
Collaboration: María Camarena, Alonso García, Adrian Paredes y Jairo Valverde
email: pulsobursatil@ulima.edu.pe
facebook: www.facebook.com/pulsobursatil.u

LIMA

Stocks

Ticker	Currency	Price	1D*	5D*	30D*	YTD*	Frequency	Volume (US\$)	Beta	Dividend Yield (%)	Price Earning	Market Cap. (M US\$)	Economic Sector*	Index Weight
▼ ALICORC1 PE**	S/.	6.00	-1.56%	-2.80%	-2.99%	-9.91%	100.00%	103,080	1.00	4.17	11.32	1,293.84	Industrial	3.53%
▼ ATACOCB1 PE**	S/.	0.10	0.00%	5.26%	-16.67%	-27.54%	44.44%	58	1.17	0.00	-	23.88	Mining	1.02%
- BACKUS1 PE**	S/.	18.30	0.00%	4.51%	-5.18%	-9.18%	94.44%	2,775	0.74	0.00	8.83	6,284.40	Industrial	0.82%
▼ BAP PE**	US\$	120.00	-2.44%	-3.03%	-19.95%	-25.28%	100.00%	285,961	1.15	0.00	-	11,325.88	Diverse	5.82%
▼ BVN PE**	US\$	8.72	-2.35%	-3.43%	-28.64%	-27.33%	100.00%	196,153	1.11	0.00	-	2,399.41	Mining	5.88%
- CASAGRC1 PE**	S/.	4.01	0.00%	2.82%	-18.66%	-15.58%	88.89%	2,526	1.22	0.00	2.96	85.37	Agricultural	1.31%
▲ BBVAC1 PE**	S/.	1.90	3.83%	-0.52%	-6.36%	-9.35%	100.00%	6,627	1.09	2.30	28.08	3,245.40	Finance	2.85%
▼ CORAREH1 PE**	S/.	1.09	-0.91%	0.00%	-0.91%	22.47%	100.00%	13,711	1.36	18.66	3.49	352.57	Industrial	1.72%
▼ CPACASC1 PE**	S/.	4.95	-0.60%	-2.94%	-17.64%	-6.60%	94.44%	22,070	0.70	15.96	35.36	581.99	Industrial	2.38%
▼ CVERDEC1 PE**	US\$	16.02	-2.73%	-2.91%	-25.31%	-23.42%	100.00%	38,521	1.45	3.57	9.17	5,607.90	Mining	5.25%
▼ ENGPEEC1 PE**	S/.	2.05	-2.38%	3.02%	-4.65%	2.50%	83.33%	2,510	0.68	9.63	12.53	1,470.78	Public Services	1.44%
- ENDISPC1**	S/.	3.85	0.00%	0.00%	-17.20%	-28.70%	44.44%	2,836	0.78	0.00	8.66	621.34	Public Services	0.98%
▲ FERREYV1 PE**	S/.	1.60	2.56%	3.90%	-9.60%	-8.05%	100.00%	40,587	1.09	11.38	7.07	394.54	Diverse	4.90%
▲ AENZAC1 PE**	S/.	1.38	1.47%	6.15%	0.00%	-20.69%	88.89%	61,457	0.74	0.00	-	304.10	Diverse	4.05%
▼ IFS PE**	US\$	24.35	-0.57%	-5.18%	-19.90%	-21.30%	100.00%	50,330	1.19	3.16	14.48	2,811.15	Diverse	7.22%
▲ INRETC1 PE**	US\$	36.00	1.41%	2.86%	-4.74%	-8.16%	100.00%	649,696	0.81	1.89	77.84	3,701.06	Diverse	5.28%
- LUSURC1 PE**	S/.	11.30	0.00%	3.20%	-5.83%	-55.69%	100.00%	2,533	0.72	0.00	12.24	1,390.69	Public Services	1.81%
▼ MINSUR1 PE**	S/.	2.46	-0.40%	-4.65%	-18.00%	32.97%	94.44%	7,669	0.96	13.58	4.74	1,792.45	Mining	3.09%
▼ PML PE**	US\$	0.10	0.00%	3.09%	-23.08%	-5.66%	72.22%	13,200	1.42	0.00	-	26.44	Mining	2.12%
▼ RELAPAC1 PE**	S/.	0.15	0.00%	-0.66%	20.00%	117.39%	94.44%	12,378	1.15	0.00	3.86	315.38	Industrial	2.12%
▼ SCCO PE**	US\$	62.00	-3.41%	-3.94%	-12.93%	-5.92%	88.89%	122,284	0.97	3.55	21.54	47,930.54	Mining	2.14%
▲ SIDERC1 PE**	S/.	1.01	6.32%	3.06%	1.00%	18.82%	88.89%	8,631	0.94	22.23	5.05	226.65	Industrial	1.43%
▲ TV PE**	US\$	0.18	1.12%	-1.10%	-14.29%	22.45%	94.44%	10,200	1.24	0.00	-	178.04	Mining	2.93%
- UNACEMC1 PE**	S/.	1.30	0.00%	-5.11%	-16.13%	-16.13%	94.44%	21,229	1.15	2.00	10.26	597.36	Industrial	3.00%
▼ VOLGABC1 PE**	S/.	0.48	-1.23%	-1.84%	-35.14%	-7.69%	100.00%	30,411	1.59	0.00	-	494.54	Mining	5.90%
- NEXAPEEC1 PE**	S/.	3.04	0.00%	4.83%	-15.56%	7.42%	72.22%	50,314	1.10	0.00	23.02	1,016.04	Mining	1.56%

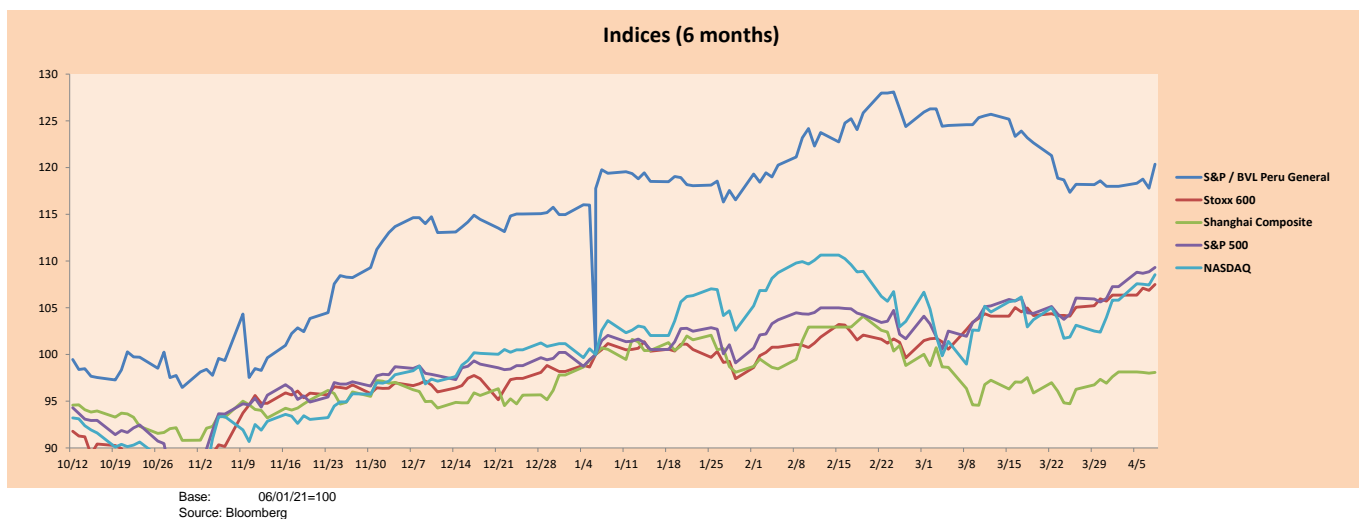
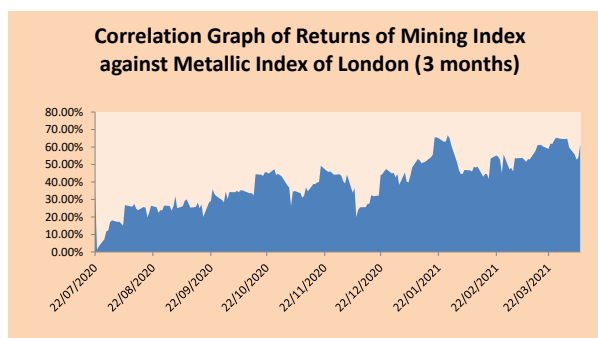
Quantity of shares: 26
 Source: Bloomberg, Económática
 * Bloomberg Industry Classification System
 ** PER is used in the stock market and original currency of the instrument
 *Legend: Variation 1D: 1 Day; 5D: 5 Days, 1M: 1 Month; YTD: Var.% 12/31/20 to date

Sectorial Indices

	Close	1D*	5D*	30D*	YTD*	Beta
▼ S&P/BVLMining	381.71	-2.37%	-2.04%	-16.62%	-2.11%	0.94
▲ S&P/BVLConsumer	1,038.84	0.93%	1.10%	-5.70%	-4.57%	0.39
▲ S&P/BVLIndustrials	184.75	0.90%	0.29%	-6.91%	-3.05%	0.48
▼ S&P/BVLFinancials	855.13	-1.59%	-1.55%	-17.00%	-17.29%	1.78
▲ S&P/BVLConstruction	199.83	0.27%	-1.06%	-6.46%	-4.44%	0.52
▲ S&P/BVLPublicSvcs	522.82	-0.82%	0.92%	-6.10%	-14.86%	0.13
▼ S&P/BVLElectricUtil	510.41	-0.82%	0.92%	-6.10%	-14.86%	0.13

S&P/BVLConstructionTRPEN

*Legend: Variation 1D: 1 Day; 5D: 5 Days, 1M: 1 Month; YTD: Var.% 12/31/20 to date



Capital Market Laboratory Coordinator: Economist Bruno Bellido
 Collaboration: Maria Camarena, Alonso García, Adrian Paredes y Jairo Valverde
 email: pulsobursatil@ulima.edu.pe
 facebook: www.facebook.com/pulsobursatil

The content of this document is just for informational purposes. The information and opinions expressed should not be considered as recommendations for future decisions. Under any circumstances, the Capital Market Laboratory of University of Lima will be responsible for the use of the statements in this document.

SOVEREIGN RATING

RISK RATINGS

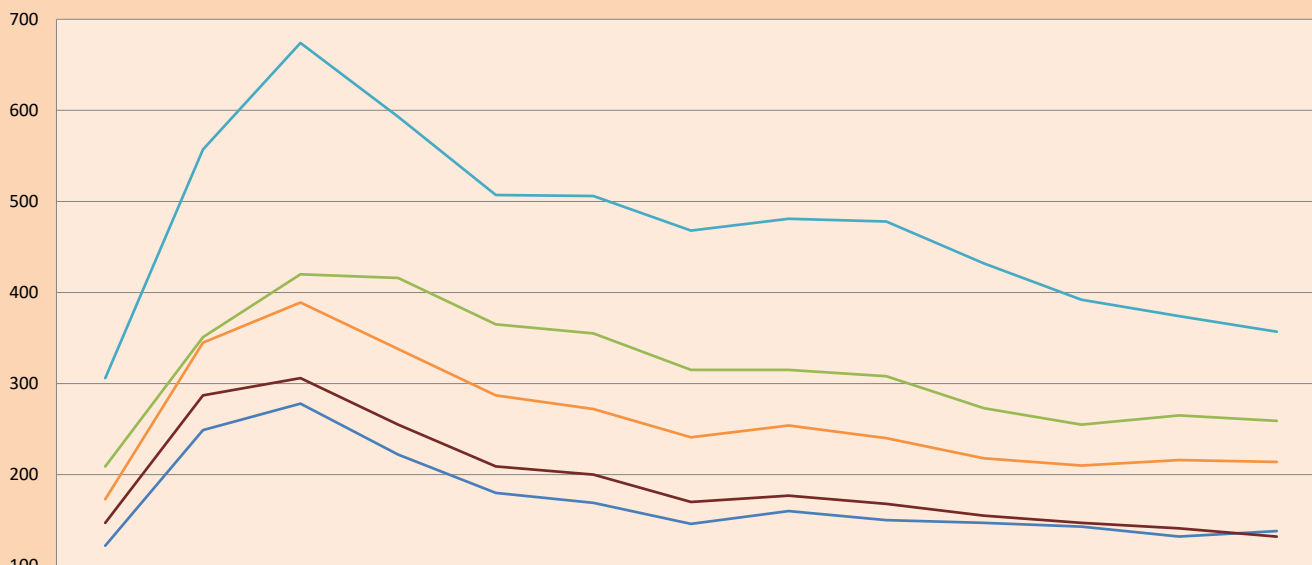
Moody's	S&P	Fitch		
Aaa	AAA	AAA	Prime	
Aa1	AA+	AA+	High credit quality	
Aa2	AA	AA		
Aa3	AA-	AA-		
A1	A+	A+	Medium-high grade, with low credit risk	
A2	A	A		
A3	A-	A-		
Baa1	BBB+	BBB+	Moderate Credit Risk	
Baa2	BBB	BBB		
Baa3	BBB-	BBB-		
Ba1	BB+	BB+	It has speculative elements and it is subject to substantial credit risk	
Ba2	BB	BB		
Ba3	BB-	BB-		
B1	B+	B+	It is considered speculative and it has high credit risk	
B2	B	B		
B3	B-	B-		
Caa1	CCC+	CCC	Bad credit conditions and it is subject to high credit risk	
Caa2	CCC			
Caa3	CCC-			
Ca	C	DDD	Very close to default or in default	
C	D			DD
				D

Source: Bloomberg

Latin America Credit Rating			
Clasificadora de riesgo			
Country	Moody's	Fitch	S&P
Peru	A3	BBB+	BBB+
México	Ba2	BB-	BB-
Venezuela	C	WD	SD
Brazil	Ba2	BB-	BB-
Colombia	Baa2	BB+	BB+
Chile	A1	A-	A
Argentine	Ca	WD	CCC+
Panama	Baa2	BBB-	BBB

Source: Bloomberg

LATAM Country Risk (bps)



	Feb-20	Mar-20	Abr-20	May-20	Jun-20	Jul-20	Ago-20	Set-20	Oct-20	Nov-20	Dic-20	Ene-21	Feb-21
Perú	122	249	278	222	180	169	146	160	150	147	143	132	138
Brasil	209	351	420	416	365	355	315	315	308	273	255	265	259
México	306	557	674	593	507	506	468	481	478	432	392	374	357
Colombia	173	345	389	338	287	272	241	254	240	218	210	216	214
Chile	147	287	306	255	209	200	170	177	168	155	147	141	132

Source: BCRP

Capital Market Laboratory Coordinator: Economist Bruno Bellido
Collaboration: María Camarena, Alonso García, Adrian Paredes y Jairo Valverde
email: pulsobursatil@ulima.edu.pe
facebook: www.facebook.com/pulsobursatil.ul