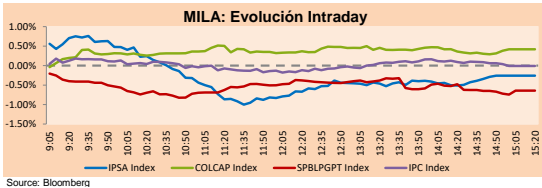


## MILA

Lima, July 12, 2021

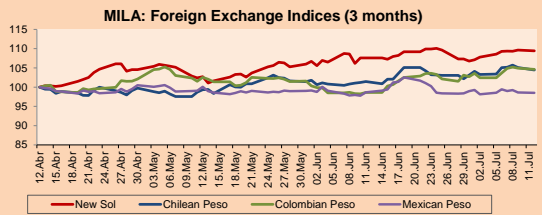
Main Indexes	Close	1 D	5 D	1 M	YTD	Cap. Burs. (US\$ bill)
▼ IPSA (Chile)	4,243.21	-0.11%	-1.03%	-1.56%	1.58%	114.88
▲ IGPA (Chile)	21,288.70	-0.17%	-1.14%	-1.71%	1.34%	137.21
▲ COLSC (Colombia)	951.59	0.06%	-1.81%	-2.98%	-10.14%	4.36
▲ COLCAP (Colombia)	1,298.44	0.42%	0.70%	2.92%	-9.70%	77.28
▼ S&P/BVL (Perú)*	18,701.91	-0.64%	-1.37%	-5.59%	-10.18%	91.31
▼ S&P/BVL SEL (Perú)	495.58	-0.30%	-0.17%	-4.83%	-10.12%	82.10
▼ S&P/BVL LIMA 25	24,354.72	-0.62%	-0.57%	-3.35%	-3.35%	90.54
▲ IPC (México)	49,789.12	0.04%	-1.51%	-2.92%	12.99%	306.42
▲ S&P MILA 40	476.35	0.50%	-1.64%	-3.85%	-10.90%	6,082.61

\*Legend: Variation 1D: 1 day; 5D: 5 days; 1M: 1 Month; YTD: Var% 12/31/20 to date



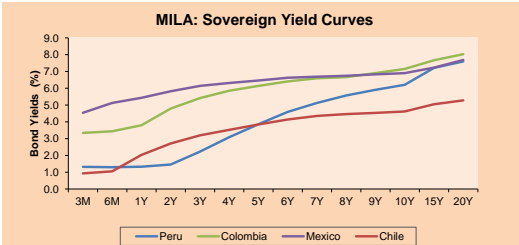
Currency	Price	1D*	5D*	30 D*	YTD*
▼ Sol (PEN)	3,961.4	-0.19%	0.78%	1.72%	9.49%
▼ Chilean Peso (CLP)	743.85	-0.62%	1.01%	2.96%	4.51%
▼ Colombian Peso (COP)	3,823.02	-0.29%	2.13%	6.09%	11.47%
▼ Mexican Peso (MXN)	19.85	-0.09%	-0.02%	-0.13%	-0.32%

\*Legend: Variation 1D: 1 day; 5D: 5 days; 1M: 1 Month; YTD: Var% 12/31/20 to date



Base: 12/04/21-100  
Source: Bloomberg

Fixed Income	Currency	Price	Bid Yield (%)	Ask Yield (%)	Duration
PERU 7.35 07/21/25	USD	122.62	1.58	1.47	3.49
PERU 4.125 08/25/27	USD	112.22	2.04	1.95	5.43
PERU 8.75 11/21/33	USD	158.204	3.10	3.02	8.70
PERU 6.55 03/14/37	USD	138.983	3.37	3.30	10.31
PERU 5.625 11/18/2050	USD	140.231	3.45	3.42	16.78
CHILE 2.25 10/30/22	USD	102.407	0.57	0.20	1.28
CHILE 3.125 01/21/26	USD	108.088	1.34	1.22	4.21
CHILE 3.625 10/30/42	USD	106.599	3.22	3.17	15.33
COLOM 11.85 03/09/28	USD	157.601	2.60	2.25	5.04
COLOM 10.375 01/28/33	USD	149.685	4.84	4.63	7.51
COLOM 7.375 09/18/37	USD	129.994	4.74	4.67	10.29
COLOM 6.125 01/18/41	USD	116.969	4.81	4.74	11.92
MEX 4 10/02/23	USD	116.969	4.813	4.744	11.92
MEX5.55 01/45	USD	121.481	4.14	4.10	14.03



Source: Bloomberg

Equity	Exchange	Currency	Price	▲%
<b>Largest gains</b>				
SOQUIMICH-B	Chile	CLP	37,700.00	4.87
CMPC	Chile	CLP	1,700.00	3.24
INRETAIL PERU CO	Peru	USD	36.50	2.24
BECLE SAB DE CV	Mexico	MXN	53.15	2.00
ISA SA	Colombia	COP	23,810.00	1.97
<b>Per Turnover</b>	<b>Exchange</b>	<b>Amount (US\$)</b>		
AERO DEL SURES-B	Mexico	26,550,091		
AMERICA MOVIL-L	Mexico	18,895,888		
GRUPO F BANORT-O	Mexico	17,529,251		
WALMART DE MEXIC	Mexico	16,038,855		
ARCA CONTINENTAL	Mexico	14,054,210		

Largest losses	Exchange	Currency	Price	▼%
BUENAVENTURA-ADI	Peru	USD	8.24	-4.41
AES GENER SA	Chile	CLP	95.65	-3.19
CAP	Chile	CLP	12,680.00	-2.34
CERVEZAS	Chile	CLP	7,680.00	-2.22
VOLCAN CIA MIN-B	Peru	PEN	0.47	-2.08
<b>Per Volume</b>	<b>Exchange</b>	<b>Volume</b>		
ITAU CORPBANCA	Chile	1,100,349,532		
BANCO SANTANDER	Chile	408,331,919		
BANCO DE CHILE	Chile	239,838,412		
ENEL CHILE SA	Chile	145,973,668		
ENEL AMERICAS SA	Chile	125,699,986		

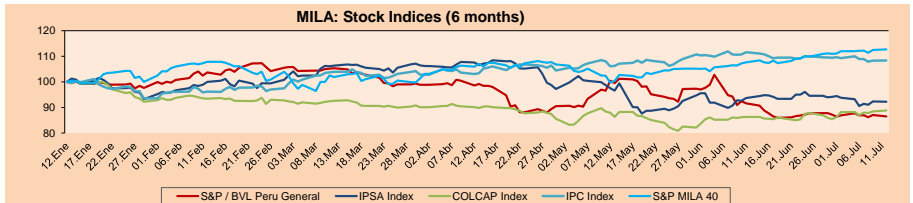
## MILA

Peru: The BVL General Index ended today's session with a negative result of -0.64%. The index maintains a negative annual cumulative trend of -10.18% in local currency, while the dollar-adjusted performance stands at -17.97%. Next, the S&P / BVL Peru SEL varied by -1.04% while the S&P / BVL LIMA 25 by -0.64%. The spot PEN reached 5 / 3.9615. Headline: Central Bank: Peruvian economy would have grown close to 45% in May.

Chile: The IPSA index closed today with a negative return of -0.11%. The most negatively affected sectors of the day were Industrials (-7.27%) and Consumer Products (-1.67%). The worst performing stocks were Compañía Sud Americana de Vapo (-7.27%) and AES Gener S.A. (-3.19%). Headline: Chilean Government raises its economic growth forecast for 2021 to 7.5%.

Colombia: The COLCAP index closed today with a positive return of +0.37%. The top gainers of the day were Utilities (+1.02%) and Financials (+0.41%). The best performing stocks were Interconexión Eléctrica (+1.97%) and Corporación Financiera Colombia (+1.81%). Headline: Crisis in Colombia: collapse in Buenaventura generates significant cost overruns to foreign trade.

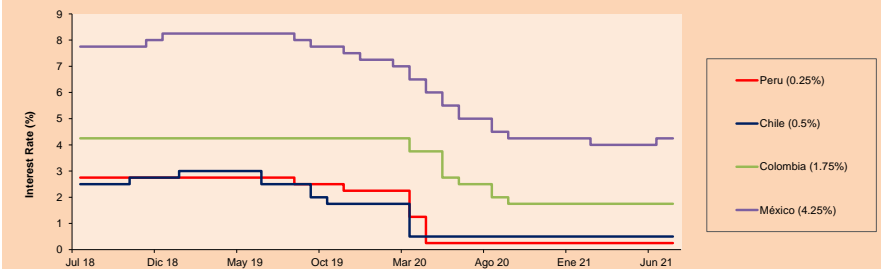
Mexico: The IPC index closed the day with a negative return of -0.22%. The sectors that benefited the least during the day were Industrials (-0.88%) and Materials (-0.48%). The worst performing stocks were Grupo Carso SAB de CV (-1.80%) and Grupo Aeroportuario (-1.75%). Headline: Mexico generates more than 65,000 new formal jobs in June.



Base: 13/01/21-100  
Source: Bloomberg

ETFs	Curr.	Close	1D	5D	30 D	YTD	Exchange
▲ iShares MSCI All Peru Caped Index Fund	USD	28.88	-0.76%	0.07%	-6.54%	-16.72%	NYSE Arca
▲ iShares MSCI All Chile Caped Index Fund	USD	27.84	0.04%	-3.60%	-5.50%	-7.85%	Cboe BZX
▲ Global X MSCI Colombia	USD	10.08	0.95%	-1.42%	-3.08%	-11.27%	NYSE Arca
▲ iShares MSCI Mexico Capped	USD	47.85	0.00%	-1.14%	-3.02%	11.30%	NYSE Arca
▲ iShares MSCI Emerging Markets	USD	53.6	0.09%	-2.15%	-3.06%	3.74%	NYSE Arca
▲ Vanguard FTSE Emerging Markets	USD	53.01	0.06%	-1.76%	-3.02%	5.79%	NYSE Arca
▲ iShares Core MSCI Emerging Markets	USD	65.42	0.18%	-1.89%	-2.47%	5.45%	NYSE Arca
▲ iShares JP Moran Emerging Markets Bonds	USD	63.15	-0.05%	-1.05%	-2.44%	3.39%	Cboe BZX
▲ Morgan Stanley Emerging Markets Domestic	USD	6.09	0.83%	-0.16%	-3.18%	-3.18%	New York

## MILA: Policy Rate



Source: Bloomberg

Capital Market Laboratory Coordinator: Economist Bruno Bellido  
Collaboration: María Camarena, Alonso García, Adrian Paredes y Jairo Valverde  
email: pulsobursatil@ulima.edu.pe  
facebook: www.facebook.com/pulsobursatil.ul



# LIMA

## Stocks

Ticker	Currency	Price	1D*	5D*	30D*	YTD*	Frequency	Volume (US\$)	Beta	Dividend Yield (%)	Price Earning	Market Cap. (M US\$)	Economic Sector*	Index Weight
▲ ALICORC1 PE**	S/.	5.95	0.06%	-1.81%	-2.98%	-10.14%	100.00%	109,620	1.00	4.20	11.23	1,281.24	Industrial	3.53%
▲ ATACOCB1 PE**	S/.	0.10	0.00%	0.00%	-3.85%	-27.54%	31.58%	2,438	1.17	0.00	-	23.85	Mining	1.02%
▼ BACKUS11 PE**	S/.	18.99	-0.05%	3.77%	7.29%	-5.76%	89.47%	9,258	0.74	6.77	9.16	6,376.14	Industrial	0.82%
▲ BAP PE**	US\$	120.15	0.76%	-2.32%	-3.88%	-25.19%	100.00%	249,161	1.14	0.00	-	11,340.04	Diverse	5.82%
▼ BVN PE**	US\$	8.24	-4.41%	-7.73%	-23.77%	-31.33%	89.47%	20,811	1.12	0.00	-	2,267.33	Mining	5.88%
▼ CASAGRC1 PE**	S/.	4.24	-0.24%	5.74%	6.00%	-10.74%	68.42%	7,937	1.22	17.64	3.13	90.16	Agricultural	1.31%
▼ BVVAC1 PE**	S/.	1.81	-3.21%	-1.09%	-5.38%	-13.65%	100.00%	22,681	1.09	2.41	26.75	3,088.01	Finance	2.85%
▲ CORAREI1 PE**	S/.	1.09	0.93%	-0.91%	11.22%	22.47%	100.00%	201,925	1.35	18.66	3.49	354.53	Industrial	1.72%
- CPACASC1 PE**	S/.	4.90	0.00%	-1.61%	-19.01%	-7.55%	94.74%	31,059	0.70	16.12	35.00	575.95	Industrial	2.38%
- CVERDEC1 PE**	US\$	16.00	0.00%	-2.85%	-4.19%	-23.52%	94.74%	53,120	1.45	3.57	9.16	5,600.90	Mining	5.25%
- ENGEPEC1 PE**	S/.	1.99	0.00%	-5.24%	-2.93%	-0.50%	52.63%	3,833	0.68	9.92	12.16	1,426.04	Public Services	1.44%
- ENDISPC1**	S/.	3.85	0.00%	0.00%	-7.23%	-28.70%	42.11%	74,367	0.78	4.43	8.66	620.61	Public Services	0.98%
- FERREYC1 PE**	S/.	1.62	0.00%	3.85%	7.28%	-6.90%	100.00%	219,996	1.09	11.24	7.16	399.00	Diverse	4.90%
▲ AENZAC1 PE**	S/.	1.45	2.11%	6.62%	31.82%	-16.67%	94.74%	32,650	0.75	0.00	-	319.15	Diverse	4.05%
▲ IFS PE**	US\$	23.97	0.21%	-2.12%	-7.02%	-22.53%	89.47%	26,290	1.19	3.21	14.32	2,767.28	Diverse	7.22%
▲ INRETC1 PE**	US\$	36.50	2.24%	2.82%	4.89%	-6.89%	100.00%	2,628,737	0.81	1.87	79.25	3,752.47	Diverse	5.28%
▲ LUSURC1 PE**	S/.	11.25	2.27%	-0.44%	-3.93%	-55.88%	73.68%	9,595	0.72	9.91	12.19	1,382.90	Public Services	1.81%
▼ MINSUR11 PE**	S/.	2.30	-3.77%	-6.88%	-12.88%	24.32%	100.00%	333,835	0.96	14.53	4.42	1,673.88	Mining	3.09%
▲ PML PE**	US\$	0.10	5.26%	0.00%	-2.91%	-5.66%	47.37%	15,257	1.42	0.00	-	26.44	Mining	2.12%
▲ RELAPAC1 PE**	S/.	0.15	0.67%	0.00%	21.95%	117.39%	100.00%	19,979	1.13	0.00	3.85	315.01	Industrial	2.12%
- SCCO PE**	US\$	65.05	0.00%	1.34%	-2.91%	-1.29%	84.21%	23,743	0.97	0.00	22.60	50,288.42	Mining	2.14%
▼ SIDERC1 PE**	S/.	0.98	-2.00%	3.16%	1.03%	15.29%	84.21%	15,508	0.94	22.91	4.90	219.66	Industrial	1.43%
▼ TV PE**	US\$	0.18	-1.67%	-0.56%	-8.76%	20.41%	89.47%	7,575	1.24	0.00	-	175.07	Mining	2.93%
▼ UNACEMC1 PE**	S/.	1.24	-2.36%	-4.62%	-5.34%	-20.00%	100.00%	23,235	1.15	3.71	9.79	569.11	Industrial	3.00%
▼ VOLCABC1 PE**	S/.	0.47	-2.08%	-3.29%	-21.67%	-9.62%	100.00%	89,060	1.59	0.00	-	483.66	Mining	5.90%
- NEXAPEC1 PE**	S/.	2.95	0.00%	-2.96%	-10.61%	4.24%	36.84%	56	1.10	0.00	22.25	985.08	Mining	1.56%

Quantity of shares: 26  
Source: Bloomberg, Económica  
\* Bloomberg Industry Classification System  
\*\* PER is used in the stock market and original currency of the instrument  
\*Legend: Variation 1D: 1 Day; 5D: 5 Days; 1M: 1 Month; YTD: Var.% 12/31/20 to date

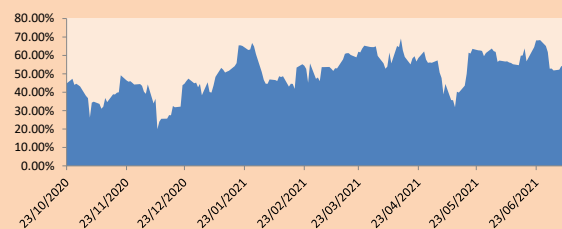
### Sectorial Indices

	Close	1D*	5D*	30D*	YTD*	Beta
▼ S&P/BVLMining	387.80	-1.41%	-0.81%	-8.18%	-0.55%	0.98
▲ S&P/BVLConsumer	1,050.96	0.97%	2.11%	1.95%	-3.46%	0.78
▼ S&P/BVLIndustrials	185.37	-0.06%	1.23%	4.73%	-2.72%	0.87
▲ S&P/BVLFinancials	855.98	0.38%	-1.50%	-2.56%	-17.21%	1.10
▼ S&P/BVLConstruction	199.77	-0.11%	0.24%	3.27%	-4.47%	0.80
- S&P/BVLPublicSvcs	514.13	0.00%	-2.47%	-3.38%	-16.28%	0.42
- S&P/BVLElectricUtil	501.92	0.00%	-2.47%	-3.38%	-16.28%	0.42

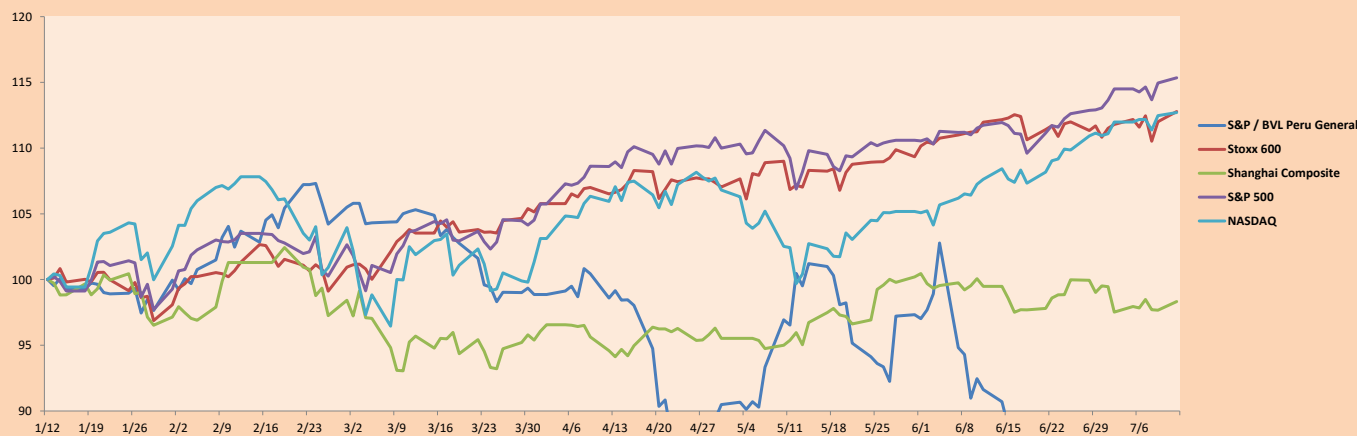
S&P/BVLConstructionTRPEN

\*Legend: Variation 1D: 1 Day; 5D: 5 Days; 1M: 1 Month; YTD: Var.% 12/31/20 to date

Correlation Graph of Returns of Mining Index against Metallic Index of London (3 months)



Indices (6 months)



Base: 12/01/21=100  
Source: Bloomberg

Capital Market Laboratory Coordinator: Economist Bruno Bellido  
Collaboration: María Camarena, Alonso García, Adrian Paredes y Jairo Valverde  
email: pulsobursatil@ulima.edu.pe  
facebook: www.facebook.com/pulsobursatil.ul

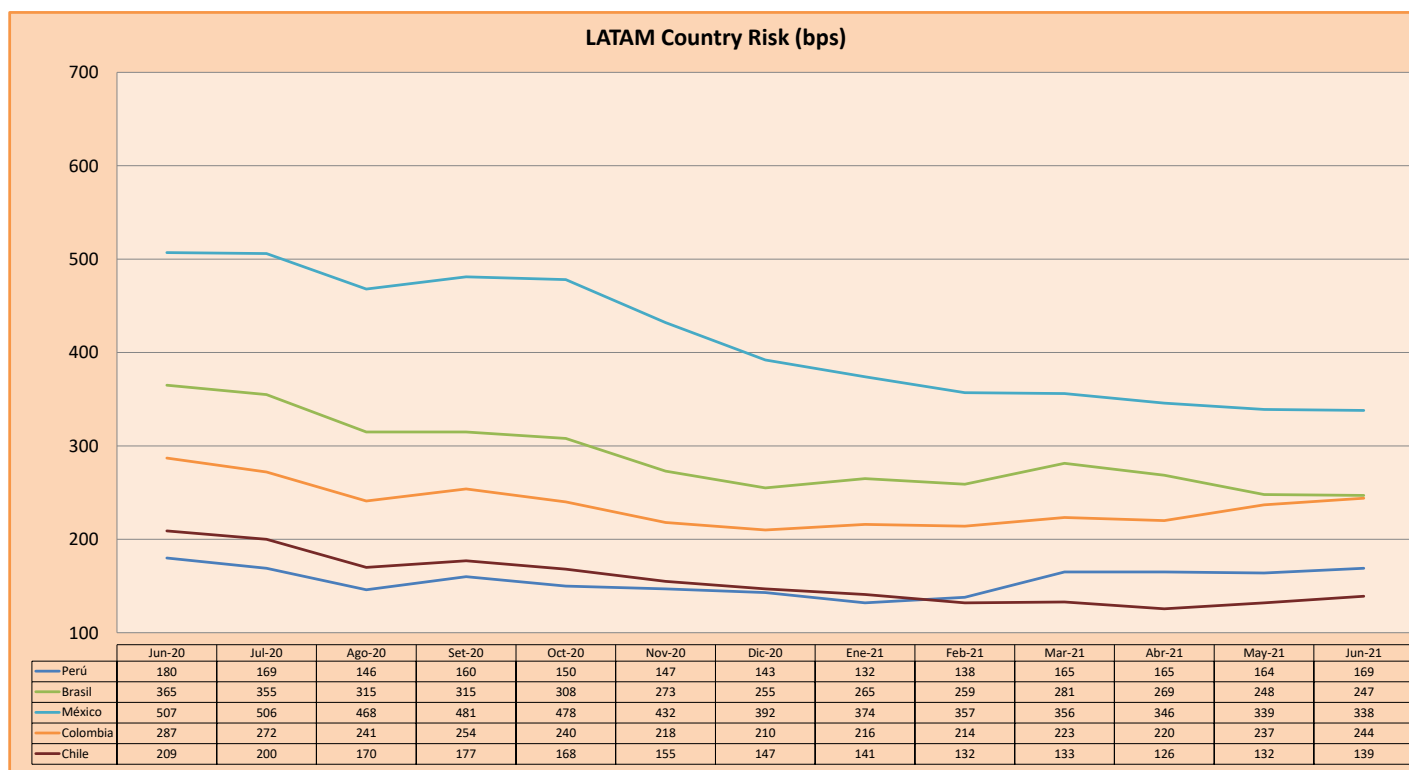
## SOVEREIGN RATING

RISK RATINGS			
Moody's	S&P	Fitch	
Aaa	AAA	AAA	Prime
Aa1	AA+	AA+	High credit quality
Aa2	AA	AA	
Aa3	AA-	AA-	
A1	A+	A+	Medium-high grade, with low credit risk
A2	A	A	
A3	A-	A-	
Baa1	BBB+	BBB+	Moderate Credit Risk
Baa2	BBB	BBB	
Baa3	BBB-	BBB-	
Ba1	BB+	BB+	It has speculative elements and it is subject to substantial credit risk
Ba2	BB	BB	
Ba3	BB-	BB-	
B1	B+	B+	It is considered speculative and it has high credit risk
B2	B	B	
B3	B-	B-	
Caa1	CCC+		Bad credit conditions and it is subject to high credit risk
Caa2	CCC		
Caa3	CCC-	CCC	
Ca	C		Very close to default or in default
		DDD	
C	D	DD D	

Source: Bloomberg

Latin America Credit Rating			
Clasificadora de riesgo			
Country	Moody's	Fitch	S&P
Peru	A3	BBB+	BBB+
México	Ba2	BB-	BB-
Venezuela	C	WD	SD
Brazil	Ba2	BB-	BB-
Colombia	Baa2	BB+	BB+
Chile	A1	A-	A
Argentine	Ca	WD	CCC+
Panama	Baa2	BBB-	BBB

Source: Bloomberg



Source: BCRP

Capital Market Laboratory Coordinator: Economist Bruno Bellido  
Collaboration: María Camarena, Alonso García, Adrian Paredes y Jairo Valverde  
email: [pulsobursatil@ulima.edu.pe](mailto:pulsobursatil@ulima.edu.pe)  
facebook: [www.facebook.com/pulsobursatil.ul](https://www.facebook.com/pulsobursatil.ul)