

PULSO BURSÁTIL

FACULTAD DE CIENCIAS EMPRESARIALES Y ECONÓMICAS
CARRERA DE ECONOMÍA
LABORATORIO DE MERCADO DE CAPITALES

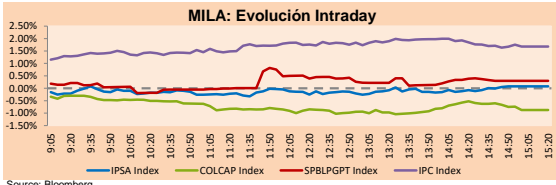


MILA

Lima, July 15, 2021

Main Indexes	Close	1 D	5 D	1 M	YTD	Cap. Burs. (US\$ bill)
▼ IPSA (Chile)	4,153.03	-0.13%	-0.84%	-4.78%	-0.58%	110.62
▼ IGPA (Chile)	20,831.74	-0.21%	-0.96%	-4.90%	-0.84%	132.18
▼ COLCAP (Colombia)	945.64	-0.09%	0.04%	-2.82%	-10.70%	4.36
▼ COLCAP (Colombia)	1,273.21	-0.87%	-0.84%	1.67%	-11.45%	76.40
▲ S&P/BVL (Perú)*	18,604.34	0.30%	-0.18%	-3.11%	-10.65%	90.77
▲ S&P/BVL SEL (Perú)	494.60	0.57%	0.45%	-1.06%	-10.30%	81.49
▲ S&P/BVL LIMA 25	24,217.69	0.42%	-0.88%	-0.33%	-3.89%	90.02
▲ IPC (México)	50,274.85	1.70%	1.42%	-1.24%	14.09%	303.74
▼ S&P MILA 40	463.98	-1.27%	-0.42%	-5.14%	-13.21%	6,058.13

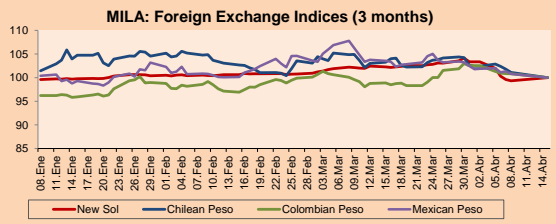
*Legend: Variation 1D: 1 day; 5D: 5 days; 1M: 1 Month; YTD: Var% 12/31/20 to date



Source: Bloomberg

Currency	Price	1D*	5D*	30 D*	YTD*
▼ Sol (PEN)	3,9476	-0.33%	-0.26%	1.88%	9.11%
▲ Chilean Peso (CLP)	757.88	1.62%	0.66%	4.28%	6.48%
▲ Colombian Peso (COP)	3,802.23	0.19%	-1.07%	3.77%	10.86%
▲ Mexican Peso (MXN)	19.95	0.32%	-0.23%	-0.40%	0.15%

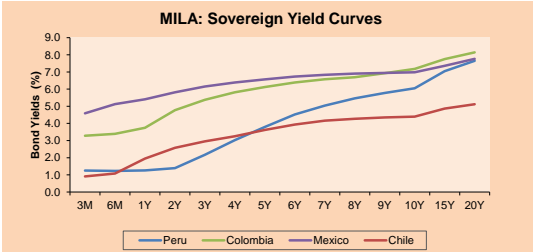
*Legend: Variation 1D: 1 day; 5D: 5 days; 1M: 1 Month; YTD: Var% 12/31/20 to date



Base: 15/04/21=100

Source: Bloomberg

Fixed Income	Currency	Price	Bid Yield (%)	Ask Yield (%)	Duration
PERU 7.35 07/21/25	USD	122.774	1.53	1.42	3.49
PERU 4.125 08/25/27	USD	112.499	1.98	1.90	5.42
PERU 8.75 11/21/33	USD	158.762	3.05	2.98	8.69
PERU 6.55 03/14/37	USD	139.822	3.30	3.26	10.31
PERU 5.625 11/18/2050	USD	141.437	3.40	3.37	16.82
CHILE 2.25 10/30/22	USD	102.409	0.57	0.16	1.27
CHILE 3.125 01/21/26	USD	108.017	1.35	1.23	4.20
CHILE 3.625 10/30/42	USD	108.056	3.13	3.08	15.31
COLOM 11.85 03/09/28	USD	157.796	2.55	2.22	5.03
COLOM 10.375 01/28/33	USD	149.869	4.80	4.63	7.51
COLOM 7.375 09/18/37	USD	130.762	4.68	4.62	10.24
COLOM 6.125 01/18/41	USD	117.75	4.76	4.69	11.86
MEX 4.10/02/23	USD	117.75	4.756	4.689	11.86
MEX5.55 01/45	USD	122.691	4.07	4.03	14.05



Source: Bloomberg

Equity

Largest gains	Exchange	Currency	Price	▲%
GRUPO MEXICO-B	Mexico	MXN	94.81	7.14
BUENAVENTURA-ADR	Peru	USD	8.69	3.95
WALMART DE MEXIC	Mexico	MXN	65.78	3.82
GRUPO BIMBO-A	Mexico	MXN	45.14	3.48
INRETAIL PERU CO	Peru	USD	36.90	2.41

Per Turnover	Exchange	Amount (US\$)
GRUPO MEXICO-B	Mexico	44,611,587
WALMART DE MEXIC	Mexico	41,555,949
AMERICA MOVIL-L	Mexico	34,568,769
GRUPO F BANORT-O	Mexico	27,193,231
SOQUIMICH-B	Chile	20,485,816

Largest losses	Exchange	Currency	Price	▼%
ITAU CORPBANCA	Chile	CLP	1,879	-3.24
ECOPETROL	Colombia	COP	2570	-3.02
ISA SA	Colombia	COP	23000	-2.25
EMPRESAS COPEC	Chile	CLP	6213.2	-1.92
CENCOSUD SHOPPIN	Chile	CLP	1142.9	-1.90

Per Volume	Exchange	Volume
ITAU CORPBANCA	Chile	329,298,438
BANCO SANTANDER	Chile	176,766,974
ENEL AMERICAS SA	Chile	62,165,963
COLBUN SA	Chile	51,529,831
BANCO DE CHILE	Chile	43,545,783

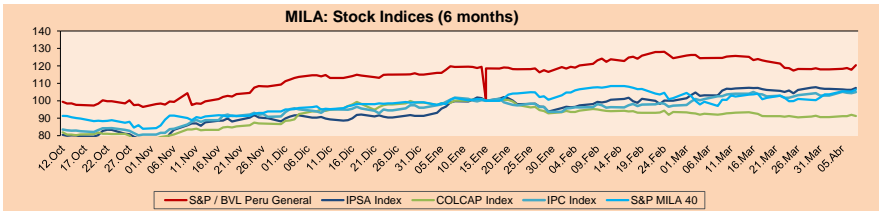
MILA

Peru: The General Index of the BVL ended today's session with a positive result of +0.30%. The index maintains an annual accumulated negative trend of -10.65% in local currency, while the adjusted return in dollars amounts to -18.11%. Then, the S&P / BVL Peru SEL changed by + 0.57% while the S&P / BVL LIMA 25 by + 0.42%. The PEN spot reached 5 / 3.9476. Headline: "Low tax pressure will not be solved only by renegotiating contracts with mining companies"

Chile: The IPSA index ended the day with a negative return of -0.13%. The sectors least benefited from the session were Industrial (-3.90%) and Energy (-1.92%). The worst performing stocks were Inversores CIA Sud Americana de Vapores (-3.90%) and Itau Corpbanca (-3.24%). Headline: Central Bank assumes the strength of the recovery and active era of rising interest

Colombia: The COLCAP index closed today with a negative return of -0.87%. The sectors that benefited the least from the session were Energy (-2.81%) and Public Services (-1.36%). The worst performing stocks were Corp. Fin. Colombia PREF-SEC (-4.13%) and Ecopetrol SA (-3.02%). Headline: Unemployment: effects felt in industrial and commercial activity, during May

Mexico: The IPC index closed the day with a positive return of + 1.70%. The sector that benefited the most from the session was Finance (+ 0.46%). The best performing stock was Grupo Financiero Banorte SAB de CV (+ 0.97%). Headline: Remittances would close this year at almost 50 billion dollars: BBVA



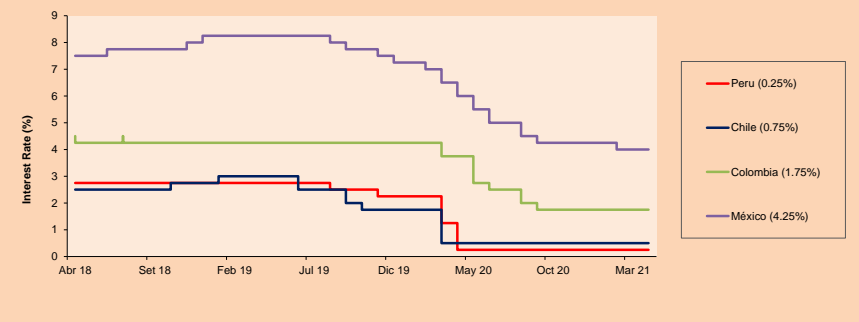
Base: 12/10/20=100

Source: Bloomberg

ETFs

ETFs	Curr.	Close	1D	5D	30 D	YTD	Exchange
▲ iShares MSCI All Peru Caped Index Fund	USD	28.57	0.21%	0.07%	-4.42%	-17.62%	NYSE Arca
▼ iShares MSCI All Chile Caped Index Fund	USD	26.81	-1.83%	-1.58%	-9.21%	-11.25%	Cboe BZX
▼ Global X MSCI Colombia	USD	9.85	-1.84%	-0.25%	-2.62%	-13.29%	NYSE Arca
▲ iShares MSCI Mexico Capped	USD	48.4	1.09%	2.50%	-0.58%	12.58%	NYSE Arca
▲ iShares MSCI Emerging Markets	USD	54.01	0.24%	2.60%	-1.91%	4.53%	NYSE Arca
▲ Vanguard FTSE Emerging Markets	USD	53.35	0.09%	2.54%	-2.13%	6.47%	NYSE Arca
▲ iShares Core MSCI Emeraina Markets	USD	65.88	0.26%	2.47%	-1.47%	6.19%	NYSE Arca
▲ iShares JP Morgan Emerging Markets Bonds	USD	63.48	0.14%	1.67%	-1.46%	3.93%	Cboe BZX
▲ Morgan Stanley Emerging Markets Domestic	USD	6.08	0.16%	1.16%	-2.41%	-3.34%	New York

MILA: Policy Rate



Source: Bloomberg

Capital Market Laboratory Coordinator: Economist Bruno Bellido
 Collaboration: Maria Camarena, Alonso Garcia, Adrian Paredes y Jairo Valverde
 email: pulsobursatil@ulima.edu.pe
 facebook: www.facebook.com/pulsobursatil

The content of this document is just for informational purposes. The information and opinions expressed should not be consider as recommendations for future decisions. Under any circumstances, the Capital Market Laboratory of University of Lima will be responsible for the use of the statements in this document.

WORLD

Main Indices	Close	1 D*	5 D*	1 M*	YTD*	Market Cap. (US\$ Mill.)
▲ Dow Jones (USA)	34,987.02	0.15%	1.64%	2.00%	14.31%	10,862,807
▼ Standard & Poor's 500 (EEUU)	4,360.03	-0.33%	0.91%	2.67%	16.08%	38,655,512
▼ NASDAQ Composite (USA)	14,543.13	-0.70%	-0.11%	3.34%	12.84%	24,519,137
▼ Stoxx EUROPE 600 (Europe)	456.20	-0.95%	1.02%	-0.80%	14.33%	10,714,005
▼ DAX (Germany)	15,629.66	-1.01%	1.36%	-0.52%	13.93%	1,186,186
▼ FTSE 100 (United Kingdom)	7,012.02	-1.12%	-0.27%	-2.41%	8.54%	1,462,996
▼ CAC 40 (France)	6,493.36	-0.99%	1.51%	-2.39%	16.97%	1,825,353
▼ IBEX 35 (Spain)	8,527.00	-1.52%	-1.42%	-7.34%	5.61%	483,480
▼ MSCI AC Asia Pacific Index	205.95	0.15%	1.65%	-1.70%	3.02%	26,707,199
▲ HANG SENG (Hong Kong)	27,996.27	0.75%	3.11%	-1.55%	2.81%	4,323,958
▲ SHANGHAI SE Comp. (China)	3,564.59	1.02%	1.11%	1.31%	2.64%	6,933,414
▼ NIKKEI 225 (Japan)	28,273.09	-1.15%	0.57%	-3.45%	3.04%	3,913,140
▼ S&P / ASX 200 (Australia)	7,335.92	-0.26%	-0.08%	-0.68%	11.37%	1,742,707
▲ KOSPI (South Korea)	3,286.22	1.70%	1.42%	0.23%	14.36%	1,939,120

*Legend: Variation 1D: 1 Day; 5D: 5 Days; 1M: 1 Month; YTD: Var. %: 12/31/20 to date

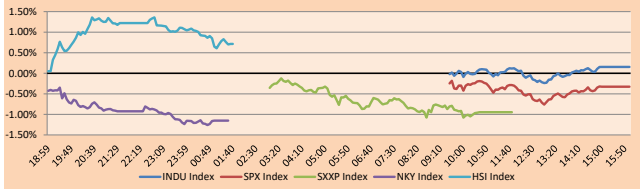
Equity

Germany (Stocks from DAX Index)					
Largest gains	Curr.	Price	▲%	Exchange	
LIN GY	EUR	247.7	0.73	Xetra	
DWNI GY	EUR	51.68	0.19	Xetra	
DBK GY	EUR	10.41	0.04	Xetra	
ALV GY	EUR	211	-0.09	Xetra	

Europe (Stocks from STOXX EUROPE 600)					
Largest gains	Curr.	Price	▲%	Exchange	
GLB ID	EUR	14.65	5.09	EN Dublin	
QIA GY	EUR	40.1	3.16	Xetra	
SEBA SS	SEK	116.8	2.96	Stockholm	
EXPN LN	GBP	3060	2.45	Londres	

Largest losses					
Curr.	Price	▼%	Exchange		
IFX GY	EUR	32.665	-2.51	Xetra	
SIE GY	EUR	130.24	-2.49	Xetra	
VOW5 GY	EUR	210.35	-2.19	Xetra	
FRE GY	EUR	44.785	-2.18	Xetra	

Global Markets: Intraday Evolution (var %)



Global Overview:

United States:

Major US indexes ended the day with mixed returns as a drop in jobless claims data fueled investor concerns about a possible rise in inflation. The S&P 500 ended lower, weighed down by the fall of Apple, Amazon, and other flagship tech companies. The companies that contributed the most to the Nasdaq decline were Amazon Inc -1.37% and NVIDIA Corp -4.41%. On the other hand, worker shortages and supply chain constraints have frustrated increased business output to meet strong demand for goods and services. On the other hand, Federal Reserve Chairman Jerome Powell said that shortages and high inflation will diminish, however, a large part of investors expect an anticipated tightening of monetary policy. Finally, in the week the most representative US banks presented reports for their second quarter, posting earnings of approximately \$33 billion, but reaffirming sensitivity to low interest rates. Likewise, the volume of transactions in the stock exchanges was below its average of 20 days, due to the awaiting of the inflationary data delivered in the week. Thus, DOW JONES + 0.15%; S&P 500 -0.33%; NASDAQ -0.7% ended the day with mixed results.

Europe:

Europe's main indices ended the session with negative returns as concerns about price pressures keep shareholders on their toes. Thus, the STOXX 600 closed the day lower dragged down by the Energy -1.94% and Consumer Products -1.69% sectors after crude oil prices fell on expectations of higher supplies. In corporate stocks, Siemens Energy fell 11.1% after eliminating its margin target after being hit by high production and raw material costs, triggering its worst stock market decline in two years. Likewise Asos -18.0% after it announced a decline in sales. In the United Kingdom, the FTSE 100 closed with losses after 44,553 new cases of COVID-19 were reported on Thursday, the highest figure since January 15. Finally, the main German index ended in negative territory, dragged down by the Industrials -2.40% and Information Technology -1.58% sectors. Thus, STOXX 600 -0.95%; FTSE 100 -1.12%; CAC 40 -0.99%; DAX -1.01%; IBEX35 -1.52% closed the day with losses.

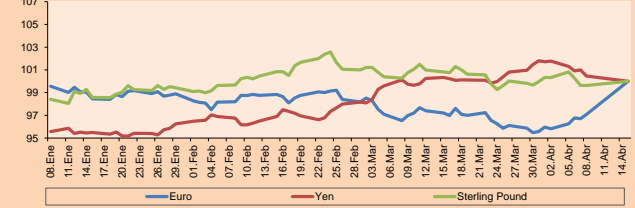
Asia:

Asian indices closed the day with mixed performances, due to encouraging news for the Chinese economy, and some pressures that weighed on the rest of the continent. In China, stock prices rose, as investors were optimistic about the increase in retail sales in June. At the same time, investors are watching for a looser policy change from the People's Bank of China after it announced that it will cut the amount of cash that banks must hold as reserves. In Hong Kong, stocks closed higher, following hopes for more government support after second-quarter growth fell short of expectations. In Japan, stocks closed lower as investor confidence was dampened by caution ahead of corporate earnings season and rising COVID-19 cases a week ahead of the Tokyo Olympics. In Australia, performance was negative, with post-payroll and banking stocks leading losses. In South Korea, stocks rallied, thanks to Jerome Powell's comments and higher Treasury yields. Thus, NIKKEI -1.15%; HANG SENG -0.75%; CSI 300 +1.35%; S&P/ASX 200 -0.26%; SHANGHAI COMPOSITE +1.02%; KOSPI -0.66% closed with mixed performances.

Currency	Price	1 D*	5 D*	1 M*	YTD*
▼ Euro	1.1812	-0.21%	-0.28%	-2.59%	-3.31%
▼ Yen	109.8300	-0.13%	0.10%	-0.23%	6.37%
▼ Sterling Pound	1.3829	-0.22%	0.31%	-1.80%	1.16%
▼ Yuan	6.4609	-0.13%	-0.46%	0.86%	-1.02%
▲ Hong Kong Dollar	7.7677	0.02%	-0.01%	0.07%	0.19%
▲ Brazilian Real	5.1119	0.80%	-2.82%	1.31%	-1.67%
▲ Argentine Peso	96.1816	0.02%	0.22%	0.94%	14.30%

*Legend: Variation 1D: 1 Day; 5D: 5 Days; 1M: 1 Month; YTD: Var. %: 12/31/20 to date

Foreign Exchange Indices (3 months)

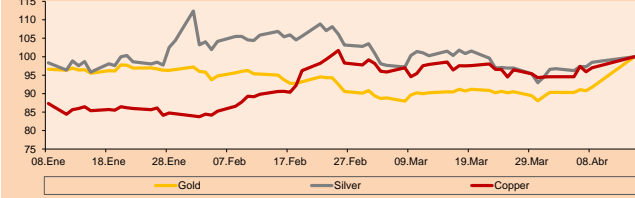


Base: 15/04/21=100
Source: Bloomberg

Commodities	Close	1 D*	5 D*	1 M*	YTD*
▲ Oro (US\$ Oz. T) (LME)	1,829.47	0.11%	1.48%	-1.59%	-3.63%
▲ Plata (US\$ Oz. T) (LME)	26.34	0.35%	1.57%	-4.78%	-0.22%
▲ Cobre (US\$ TM) (LME)	9,452.00	1.61%	1.77%	-0.90%	21.98%
▲ Zinc (US\$ TM) (LME)	2,955.25	1.59%	1.40%	-1.95%	8.28%
▼ Petróleo WTI (US\$ Barril) (NYM)	71.65	-2.02%	-1.77%	-0.29%	48.13%
▲ Estiño (US\$ TM) (LME)	33,810.00	0.47%	3.41%	2.14%	64.57%
▲ Plomo (US\$ TM) (LME)	3,222.25	1.39%	0.81%	7.57%	17.54%
▲ Azúcar #11 (US\$ Libra) (NYB-ICE)	17.33	2.36%	-0.69%	0.76%	23.43%
▼ Cacao (US\$ TM) (NYB-ICE)	2,369.00	-1.37%	3.22%	-2.43%	-5.47%
▲ Café Arábica (US\$ TM) (NYB-ICE)	157.05	0.29%	3.15%	2.48%	17.82%

*Legend: Variación 1D: 1 Día; 5D: 5 Días; 1M: 1 Mes; YTD: Var. %: 31/12/20 a la fecha

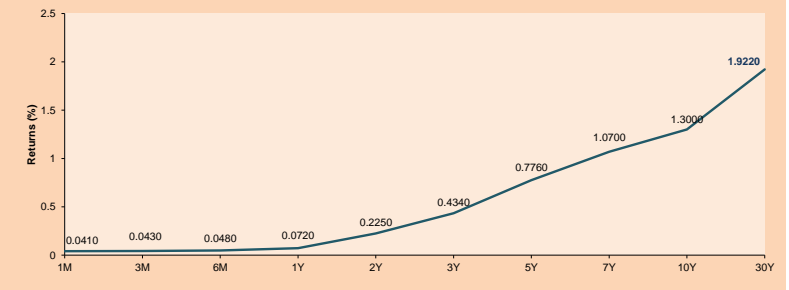
Principal Metals (3 months)



Base: 15/04/21=100
Source: Bloomberg

ETFs	Curr.	Close	1D	5D	30 D	YTD	Exchange
SPDR S&P 500 ETF TRUST	USD	434.75	-0.34%	0.89%	2.42%	16.28%	NYSE Arca
ISHARES MSCI EMERGING MARKET	USD	54.01	0.24%	2.60%	-1.91%	4.53%	NYSE Arca
ISHARES IBOXX HIGH YLD CORP	USD	87.79	-0.07%	-0.07%	0.30%	0.56%	NYSE Arca
FINANCIAL SELECT SECTOR SPDR	USD	36.62	0.33%	2.63%	-1.66%	24.22%	NYSE Arca
VANECK GOLD MINERS	USD	34.97	0.66%	3.83%	-6.97%	-2.92%	NYSE Arca
ISHARES RUSSELL 2000 ETF	USD	217.83	-0.57%	-1.84%	-5.53%	11.00%	NYSE Arca
SPDR GOLD SHARES	USD	171.07	0.02%	1.43%	-1.71%	-4.09%	NYSE Arca
ISHARES 20+ YEAR TREASURY BO	USD	148.49	1.10%	-0.09%	5.27%	-5.86%	NASDAQ GM
INVESCO QQQ TRUST SERIES 1	USD	360.52	-0.70%	0.49%	5.34%	14.91%	NASDAQ GM
ISHARES BIOTECHNOLOGY ETF	USD	159.25	0.23%	-1.55%	-0.12%	5.12%	NASDAQ GM
ENERGY SELECT SECTOR SPDR	USD	50.10	-1.40%	-3.19%	-10.84%	32.19%	NYSE Arca
PROSHARES ULTRA VIX FUTUR	USD	27.69	2.29%	-10.36%	-12.10%	-74.00%	Close BZX
UNITED STATES OIL FUND LP	USD	49.04	-1.33%	-0.97%	0.12%	48.56%	NYSE Arca
ISHARES MSCI BRAZIL ETF	USD	39.82	-1.14%	4.43%	-2.85%	7.42%	NYSE Arca
SPDR S&P OIL & GAS EXP & PR	USD	85.72	-2.01%	-6.40%	-12.50%	46.53%	NYSE Arca
UTILITIES SELECT SECTOR SPDR	USD	65.61	1.13%	1.69%	-1.26%	4.64%	NYSE Arca
ISHARES US REAL ESTATE ETF	USD	105.76	0.26%	1.81%	1.88%	23.48%	NYSE Arca
SPDR S&P BIOTECH ETF	USD	125.94	-0.01%	-4.53%	-5.61%	-10.54%	NYSE Arca
ISHARES IBOXX INVESTMENT GRA	USD	136.16	0.22%	-0.17%	1.41%	-2.15%	NYSE Arca
ISHARES JP MORGAN USD EMERGI	USD	112.65	0.31%	0.42%	0.16%	-2.81%	NASDAQ GM
REAL ESTATE SELECT SECT SPDR	USD	46.18	0.15%	1.92%	1.99%	26.31%	NYSE Arca
ISHARES CHINA LARGE-CAP ETF	USD	44.74	0.97%	4.24%	-1.84%	-3.64%	NYSE Arca
CONSUMER STAPLES SPDR	USD	70.93	0.41%	1.69%	0.28%	5.16%	NYSE Arca
VANECK JR GOLD MINERS	USD	46.77	0.11%	2.72%	-10.54%	-13.77%	NYSE Arca
SPDR RIBG BARO HIGH YIELD BND	USD	106.75	-0.02%	-0.03%	0.29%	0.74%	NYSE Arca
VANGUARD REAL ESTATE ETF	USD	105.38	0.16%	0.98%	0.98%	24.08%	NYSE Arca
GRAYSCALE BITCOIN TRUST BTC	USD	25.52	-5.06%	-6.86%	-23.21%	-20.25%	OTC US

USA Treasury Bonds Yield Curve (%)



Source: Bloomberg

Capital Market Laboratory Coordinator: Economist Bruno Bellido
Collaboration: María Camarena, Alonso García, Adrian Paredes y Jairo Valverde
email: pulsohorsatil@ulima.edu.pe
facebook: www.facebook.com/pulsohorsatil

LIMA

Stocks

Ticker	Currency	Price	1D*	5D*	30D*	YTD*	Frequency	Volume (US\$)	Beta	Dividend Yield (%)	Price Earning	Market Cap. (M US\$)	Economic Sector*	Index Weight
▼ ALICORC1 PE**	S/.	5.90	-0.09%	0.04%	-2.82%	-10.70%	100.00%	366,884	1.00	4.24	11.13	1,274.64	Industrial	3.53%
▼ ATACOCB1 PE**	S/.	0.10	0.00%	-3.00%	-3.00%	-29.71%	44.44%	160	1.17	0.00	-	23.22	Mining	1.02%
▼ BACKUS1 PE**	S/.	18.99	0.00%	-0.05%	9.77%	-5.76%	94.44%	31,955	0.74	0.00	9.16	6,398.43	Industrial	0.82%
- BAP PE**	US\$	117.90	-0.83%	-0.92%	-2.29%	-26.59%	100.00%	166,862	1.14	0.00	-	11,127.68	Diverse	5.82%
▲ BVN PE**	US\$	8.69	3.95%	2.72%	-15.30%	-27.58%	100.00%	61,656	1.12	0.00	-	2,391.15	Mining	5.88%
▼ CASAGRC1 PE**	S/.	4.00	0.00%	-5.88%	4.99%	-15.79%	88.89%	23,493	1.23	0.00	2.95	85.35	Agricultural	1.31%
- BBVAC1 PE**	S/.	1.85	-0.54%	0.00%	-2.32%	-11.74%	100.00%	3,252	1.09	2.36	27.34	3,167.28	Finance	2.85%
▼ CORAREH1 PE**	S/.	0.98	0.00%	-9.26%	8.89%	10.11%	100.00%	26,773	1.35	24.37	3.14	329.21	Industrial	1.72%
▲ CPACASC1 PE**	S/.	4.91	0.20%	-0.61%	-20.16%	-7.36%	94.44%	50,243	0.70	16.09	35.07	579.04	Industrial	2.38%
▲ CVERDEC1 PE**	US\$	16.00	0.63%	-1.23%	0.06%	-23.52%	100.00%	160,509	1.45	3.57	9.16	5,600.90	Mining	5.25%
- ENGEPEC1 PE**	S/.	1.95	0.00%	-2.01%	-3.47%	-2.50%	83.33%	17,818	0.68	10.13	11.92	1,402.26	Public Services	1.44%
- ENDISPC1**	S/.	3.85	0.00%	0.00%	-5.41%	-28.70%	44.44%	9,500	0.78	4.43	8.66	622.78	Public Services	0.98%
▲ FERREYV1 PE**	S/.	1.62	1.89%	-0.61%	8.00%	-6.90%	100.00%	300,734	1.09	11.24	7.16	400.40	Diverse	4.90%
- AENZAC1 PE**	S/.	1.45	0.00%	5.07%	23.93%	-16.67%	88.89%	32,765	0.75	0.00	-	320.27	Diverse	4.05%
▲ IFS PE**	US\$	23.49	1.64%	-1.05%	-8.06%	-24.08%	100.00%	58,404	1.19	3.28	13.96	2,711.87	Diverse	7.22%
▲ INRETC1 PE**	US\$	36.90	2.41%	2.79%	5.43%	-5.87%	100.00%	3,744,459	0.81	1.85	79.72	3,793.59	Diverse	5.28%
- LUSURC1 PE**	S/.	11.25	0.00%	1.81%	-3.93%	-55.88%	100.00%	855	0.73	0.00	12.19	1,387.73	Public Services	1.81%
- MINSUR1 PE**	S/.	2.30	0.00%	-3.77%	-12.21%	24.32%	94.44%	3,041,185	0.96	14.53	4.44	1,679.73	Mining	3.09%
- PML PE**	US\$	0.10	0.00%	0.00%	5.26%	-5.66%	72.22%	4,470	1.42	0.00	-	26.44	Mining	2.12%
▼ RELAPAC1 PE**	S/.	0.15	-0.65%	-1.94%	21.60%	120.29%	94.44%	53,249	1.13	0.00	3.92	320.32	Industrial	2.12%
▼ SCCO PE**	US\$	63.50	-1.18%	2.42%	0.32%	-3.64%	88.89%	153,477	0.97	3.46	22.06	49,090.15	Mining	2.14%
- SIDERC1 PE**	S/.	0.98	0.00%	-3.92%	1.03%	15.29%	88.89%	1,704	0.94	22.91	4.90	220.43	Industrial	1.43%
▲ TV PE**	US\$	0.18	1.16%	-2.78%	-3.85%	19.05%	94.44%	1,367	1.24	0.00	-	173.09	Mining	2.93%
▼ UNACEMC1 PE**	S/.	1.21	-1.63%	-5.47%	-5.47%	-21.94%	94.44%	46,635	1.14	3.80	9.55	557.28	Industrial	3.00%
▲ VOLCABC1 PE**	S/.	0.46	0.43%	-3.75%	-11.15%	-11.15%	100.00%	21,386	1.58	0.00	-	477.09	Mining	5.90%
- NEXAPEC1 PE**	S/.	2.85	0.00%	-3.39%	-13.64%	0.71%	72.22%	76,504	1.10	0.00	21.60	954.15	Mining	1.56%

Quantity of shares: 26
 Source: Bloomberg, Economática
 * Bloomberg Industry Classification System
 ** PER is used in the stock market and original currency of the instrument
 *Legend: Variation 1D: 1 Day; 5D: 5 Days, 1M: 1 Month; YTD: Var.% 12/31/20 to date

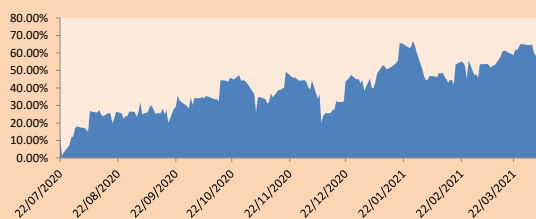
Sectorial Indices

	Close	1D*	5D*	30D*	YTD*	Beta
▼ S&P/BVLMining	384.58	-0.19%	1.40%	-3.50%	-1.38%	0.94
▲ S&P/BVLCConsumer	1,050.70	0.99%	0.83%	1.60%	-3.48%	0.40
▲ S&P/BVLIIndustrials	183.27	0.31%	-1.34%	3.22%	-3.83%	0.49
▼ S&P/BVLFFinancials	838.00	-0.96%	-1.17%	-1.26%	-18.95%	1.77
▼ S&P/BVLCConstruction	196.46	-0.32%	-1.61%	0.89%	-6.05%	0.53
- S&P/BVLPPublicSvcs	510.66	0.00%	-0.67%	-3.49%	-16.84%	0.11
- S&P/BVLElectricUtil	498.53	0.00%	-0.68%	-3.49%	-16.85%	0.11

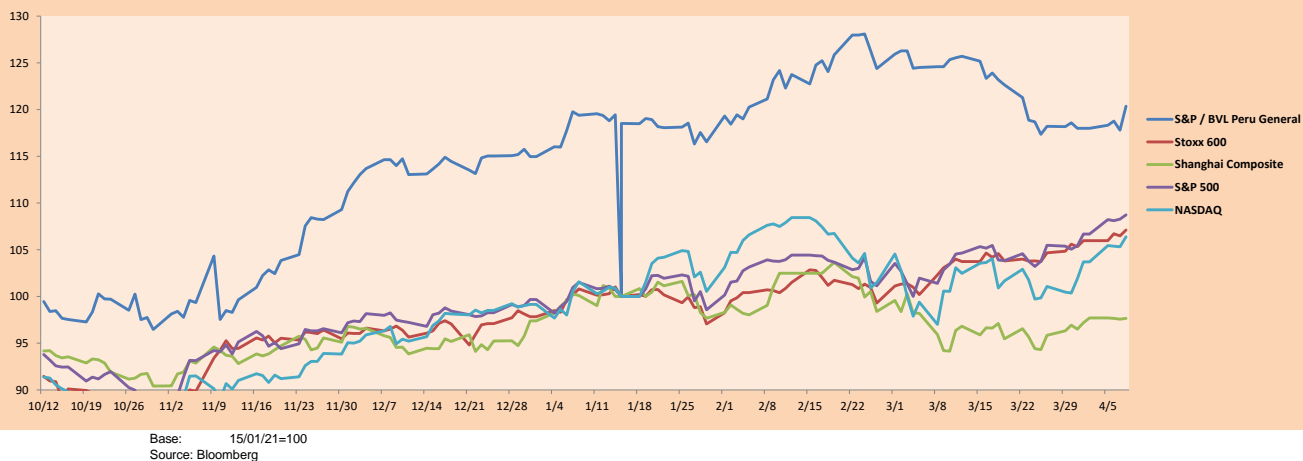
S&P/BVLCConstructionTRPEN

*Legend: Variation 1D: 1 Day; 5D: 5 Days, 1M: 1 Month; YTD: Var.% 12/31/20 to date

Correlation Graph of Returns of Mining Index against Metallic Index of London (3 months)



Indices (6 months)



Base: 15/01/21=100
 Source: Bloomberg

Capital Market Laboratory Coordinator: Economist Bruno Bellido
 Collaboration: Maria Camarena, Alonso García, Adrian Paredes y Jairo Valverde
 email: pulsobursatil@ulima.edu.pe
 facebook: www.facebook.com/pulsobursatil

SOVEREIGN RATING

RISK RATINGS

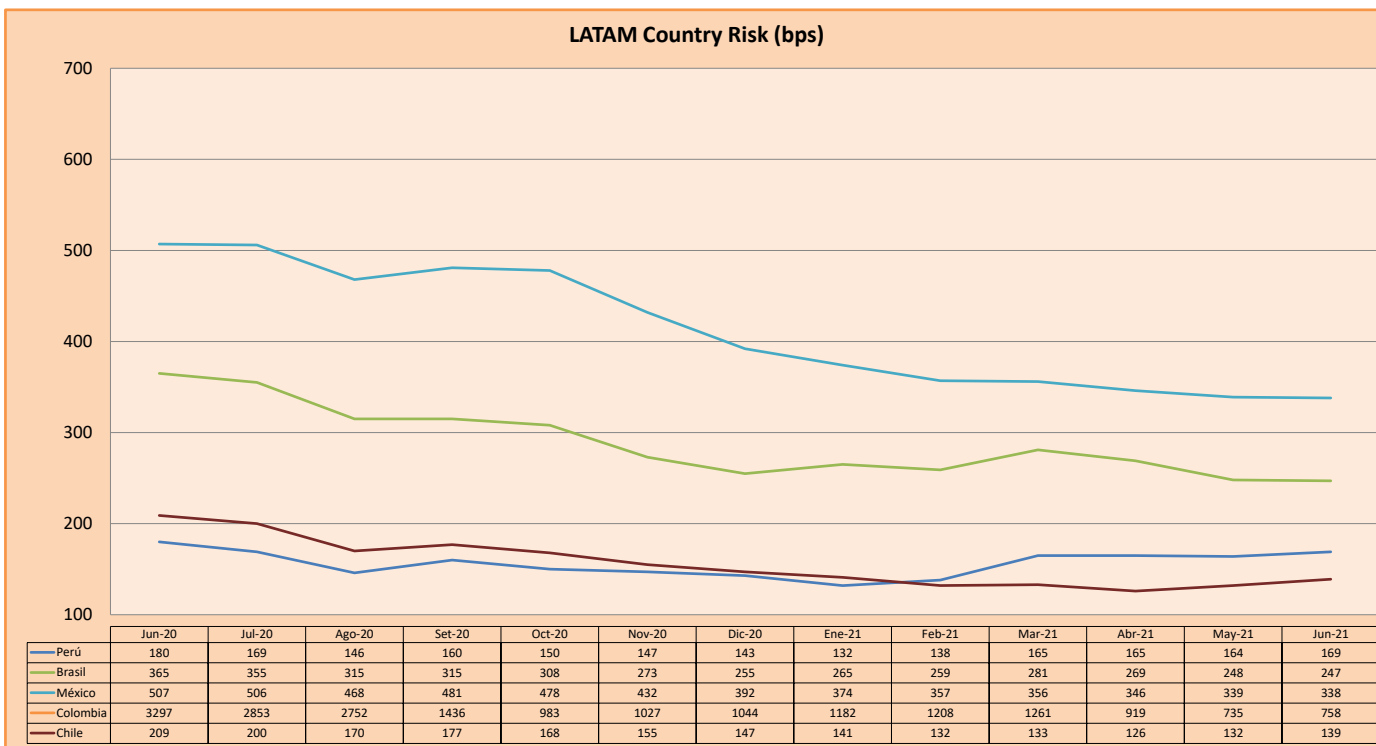
Moody's	S&P	Fitch		
Aaa	AAA	AAA	Prime	
Aa1	AA+	AA+	High credit quality	
Aa2	AA	AA		
Aa3	AA-	AA-		
A1	A+	A+	Medium-high grade, with low credit risk	
A2	A	A		
A3	A-	A-		
Baa1	BBB+	BBB+	Moderate Credit Risk	
Baa2	BBB	BBB		
Baa3	BBB-	BBB-		
Ba1	BB+	BB+	It has speculative elements and it is subject to substantial credit risk	
Ba2	BB	BB		
Ba3	BB-	BB-		
B1	B+	B+	It is considered speculative and it has high credit risk	
B2	B	B		
B3	B-	B-		
Caa1	CCC+	CCC	Bad credit conditions and it is subject to high credit risk	
Caa2	CCC			
Caa3	CCC-			
Ca	C	DDD	Very close to default or in default	
C	D			DD
				D

Source: Bloomberg

Latin America Credit Rating			
Clasificadora de riesgo			
Country	Moody's	Fitch	S&P
Peru	A3	BBB+	BBB+
México	Ba2	BB-	BB-
Venezuela	C	WD	SD
Brazil	Ba2	BB-	BB-
Colombia	Baa2	BB+	BB+
Chile	A1	A-	A
Argentine	Ca	WD	CCC+
Panama	Baa2	BBB-	BBB

Source: Bloomberg

LATAM Country Risk (bps)



Source: BCRP

Capital Market Laboratory Coordinator: Economist Bruno Bellido
Collaboration: María Camarena, Alonso García, Adrian Paredes y Jairo Valverde
email: pulsobursatil@ulima.edu.pe
facebook: www.facebook.com/pulsobursatil.ul