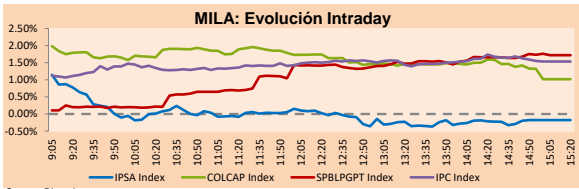


MILA

Lima, July 21, 2021

Main Indexes	Close	1 D	5 D	1 M	YTD	Cap. Burs. (US\$ bill)
▼ IPSA (Chile)	4,274.26	-0.41%	1.80%	-0.47%	2.32%	115.23
▼ IGPA (Chile)	21,372.12	-0.47%	1.38%	-0.89%	1.74%	136.13
▲ COLSC (Colombia)	933.56	0.35%	-1.53%	-3.58%	-11.84%	4.28
▲ COLCAP (Colombia)	1,250.71	1.02%	-3.33%	-0.52%	-13.02%	73.07
▲ S&P/BVL (Perú)*	18,743.00	1.72%	1.05%	0.62%	-9.99%	88.83
▲ S&P/BVL SEL (Perú)	498.62	1.79%	1.39%	0.26%	-9.57%	81.59
▲ S&P/BVL LIMA 25	24,385.74	1.42%	1.12%	1.99%	-3.23%	88.08
▲ IPC (México)	50,035.17	1.58%	1.21%	-0.56%	13.54%	300.04
▲ S&P MILA 40	467.06	0.71%	-0.62%	-0.79%	-12.64%	6,046.43

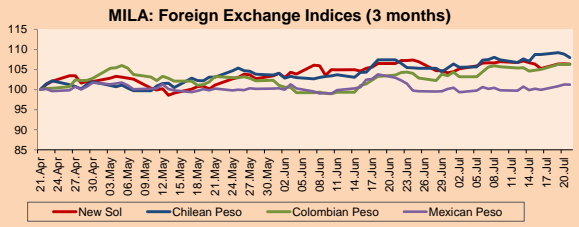
*Legend: Variation 1D: 1 day; 5D: 5 days; 1M: 1 Month; YTD: Var% 12/31/20 to date



Source: Bloomberg

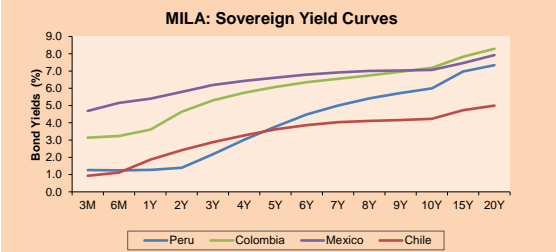
Currency	Price	1D*	5D*	30 D*	YTD*
▼ Sol (PEN)	3,9469	-0.07%	-0.34%	-0.15%	9.09%
▼ Chilean Peso (CLP)	752.38	-0.81%	0.88%	0.53%	5.70%
▼ Colombian Peso (COP)	3,854.63	-0.01%	1.57%	2.54%	12.33%
▼ Mexican Peso (MXN)	20.15	-0.03%	1.36%	-1.66%	1.19%

*Legend: Variation 1D: 1 day; 5D: 5 days; 1M: 1 Month; YTD: Var% 12/31/20 to date



Base: 21/04/21=100
Source: Bloomberg

Fixed Income	Currency	Price	Bid Yield (%)	Ask Yield (%)	Duration
PERU 7.35 07/21/25	USD	122.664	1.54	1.43	3.57
PERU 4.125 08/25/27	USD	112.27	2.02	1.93	5.40
PERU 8.75 11/21/33	USD	158.438	3.07	3.00	8.68
PERU 6.55 03/14/37	USD	139.277	3.34	3.28	10.31
PERU 5.625 11/18/2050	USD	140.277	3.45	3.42	16.84
CHILE 2.25 10/30/22	USD	102.246	0.67	0.28	1.25
CHILE 3.125 01/21/26	USD	107.887	1.36	1.26	4.24
CHILE 3.625 10/30/42	USD	107.592	3.17	3.10	15.36
COLOM 11.85 03/09/28	USD	157.941	2.48	2.23	5.02
COLOM 10.375 01/28/33	USD	149.762	4.80	4.64	7.49
COLOM 7.375 09/18/37	USD	130.629	4.69	4.62	10.28
COLOM 6.125 01/18/41	USD	117.722	4.75	4.70	12.25
MEX 4 10/02/23	USD	117.722	4.752	4.695	12.25
MEX5.55 01/45	USD	122.22	4.09	4.05	14.41



Source: Bloomberg

Equity

Largest gains	Exchange	Currency	Price	▲ %
CEMEX SAB-CPO	Mexico	MXN	16.55	4.22
VOLCAN CIA MIN-B	Peru	PEN	0.47	3.98
ECOPETROL	Colombia	COP	2535.00	3.55
BUENAVENTURA-ADR	Peru	USD	8.68	3.33
CREDECORP LTD	Peru	USD	122.04	3.12

Largest losses	Exchange	Currency	Price	▼ %
GRUPO CARSO-A1	Mexico	MXN	61.52	-3.22
BANCO CRED INVER	Chile	CLP	31350	-3.00
CAP	Chile	CLP	12829	-2.81
FALABELLA SA	Chile	CLP	3059	-2.58
ENTEL	Chile	CLP	3765.9	-2.44

Per Turnover	Exchange	Amount (US\$)
CEMEX SAB-CPO	Mexico	20,247,207
AMERICA MOVIL-L	Mexico	19,563,103
FALABELLA SA	Chile	16,583,668
GRUPO F BANORT-O	Mexico	15,962,346
ARCA CONTINENTAL	Mexico	15,272,763

Per Volume	Exchange	Volume
ITAU CORPBANCA	Chile	248,209,400
BANCO DE CHILE	Chile	156,437,327
BANCO SANTANDER	Chile	81,483,135
ENEL CHILE SA	Chile	49,688,565
ENEL AMERICAS SA	Chile	32,563,895

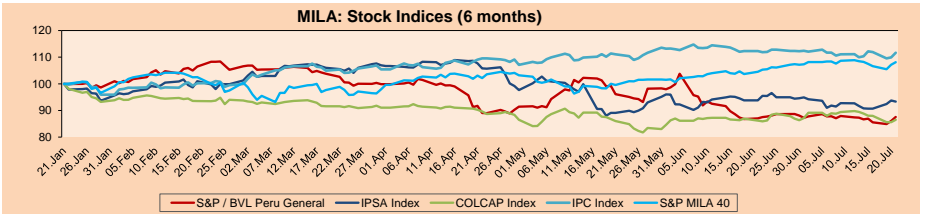
MILA

Peru: The General Index of the BVL closed the session today with a positive result of + 1.72%. The index maintains an annual accumulated negative trend of -9.99% in local currency, while the adjusted return in dollars amounts to -17.49%. Then, the S&P / BVL Peru SEL varied by + 1.79% while the S&P / BVL LIMA 25 by + 1.42%. The PEN position reached S / 3.9469. Headline: BBVA Research lowered the GDP growth projection for 2021 and 2022.

Chile: The IPSA index closed the day with a negative return of -0.41%. The sectors that benefited the least from the session were Non-Basic Consumer Products (-2.44%) and Communications Services (-2.44%). The most performing stocks were Banco de Crédito e Inversiones (-3.00%) and CAP SA (-2.81%). Headline: Exchange rate law passes the constitutional test in the TC and now Piller's signature is missing.

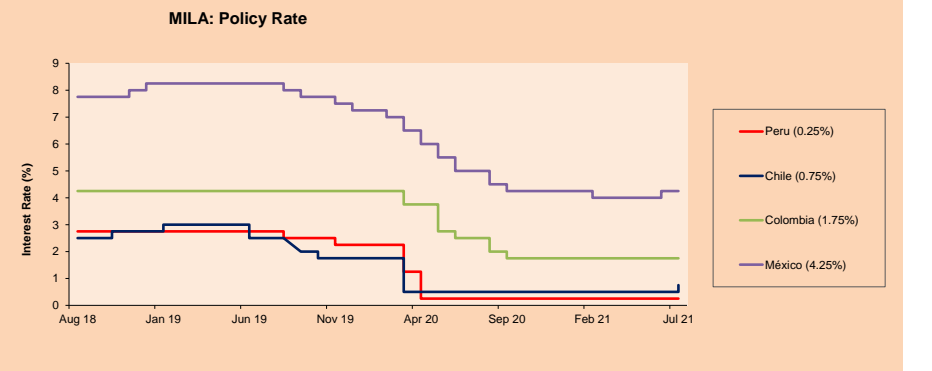
Colombia: The COLCAP index closed today with a positive return of + 1.02%. The sectors that most benefited from the conference were Energy (+ 3.37%) and Public Services (+ 1.01%). The best performing stocks were Ecopetrol SA (+ 3.55%) and Empresa de Energía de Bogotá (+ 2.45%). Headline: Bond investors ignore Colombia's Low Ratings.

Mexico: The IPC index closed the day with a positive return of + 1.58%. The sectors that most benefited from the conference were Materials (+ 3.01%) and Non-Basic Consumer Products (+ 2.34%). The best performing stocks were Banco del Bajío SA (+ 4.65%) and Cemex SAB de CV (+ 4.22%). Headline: Winner of the 'rebound' of the US and Mexican stock exchanges.



Base: 22/01/21=100
Source: Bloomberg

ETFs	Curr.	Close	1D	5D	30 D	YTD	Exchange
▲ iShares MSCI All Peru Caped Index Fund	USD	28.67	2.43%	0.56%	2.47%	-17.33%	NYSE Arca
▲ iShares MSCI All Chile Caped Index Fund	USD	28.21	1.47%	3.30%	-0.07%	-6.62%	Cboe BZX
▲ Global X MSCI Colombia	USD	9.58	0.21%	-4.53%	-3.33%	-16.67%	NYSE Arca
▲ iShares MSCI Mexico Capped	USD	47.42	1.17%	-0.98%	0.55%	10.30%	NYSE Arca
▲ iShares MSCI Emerging Markets	USD	53.2	0.64%	-1.26%	-2.31%	2.96%	NYSE Arca
▲ Vanguard FTSE Emerging Markets	USD	52.7	0.86%	-1.13%	-1.75%	5.17%	NYSE Arca
▲ iShares Core MSCI Emerging Markets	USD	64.98	0.67%	-1.11%	-1.80%	4.74%	NYSE Arca
▲ iShares JP Morgan Emerging Markets Bonds	USD	62.87	0.11%	-0.82%	-1.60%	2.93%	Cboe BZX
▼ Morgan Stanley Emerging Markets Domestic	USD	6.02	-0.17%	-0.82%	-1.95%	-4.29%	New York



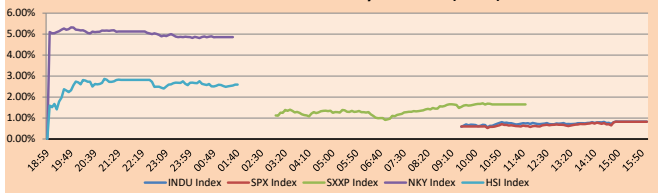
Source: Bloomberg

WORLD

Main Indices	Close	1 D*	5 D*	1 M*	YTD*	Market Cap. (US\$ Mill.)
▲ Dow Jones (USA)	34,798.00	0.83%	-0.39%	2.72%	13.69%	10,711,112
▲ Standard & Poor's 500 (EEUU)	4,356.69	0.82%	-0.36%	3.17%	16.04%	38,294,953
▲ NASDAQ Composite (USA)	14,631.35	0.92%	-0.09%	3.47%	13.53%	24,257,610
▲ Stoxx EUROPE 600 (Europe)	453.97	1.65%	-1.43%	-0.54%	13.77%	10,689,648
▲ DAX (Germany)	15,422.50	1.36%	-2.32%	-1.37%	12.42%	1,171,220
▲ FTSE 100 (United Kingdom)	6,998.28	1.70%	-1.31%	-1.29%	8.32%	1,472,558
▲ CAC 40 (France)	6,464.48	1.85%	-1.43%	-2.22%	16.45%	1,821,218
▲ IBEX 35 (Spain)	8,587.00	2.50%	-1.05%	-5.37%	6.11%	487,284
▲ MSCI AC Asia Pacific Index	200.85	0.24%	-2.28%	-2.44%	0.51%	26,217,336
▼ HANG SENG (Hong Kong)	27,224.58	-0.13%	-2.03%	-3.83%	-0.02%	4,182,140
▲ SHANGHAI SE Comp. (China)	3,562.66	0.73%	0.97%	0.15%	2.58%	6,957,504
▲ NIKKEI 225 (Japan)	27,548.00	0.58%	-3.71%	-4.63%	0.38%	3,819,733
▲ S&P/ASX 200 (Australia)	7,308.72	0.76%	-0.63%	0.22%	11.71%	1,719,289
▲ KOSPI (South Korea)	3,215.91	1.58%	1.21%	-0.74%	12.75%	1,890,176

*Legend: Variation 1D: 1 Day; 5D: 5 Days; 1M: 1 Month; YTD: Var.% 12/31/20 to date

Global Markets: Intraday Evolution (var %)

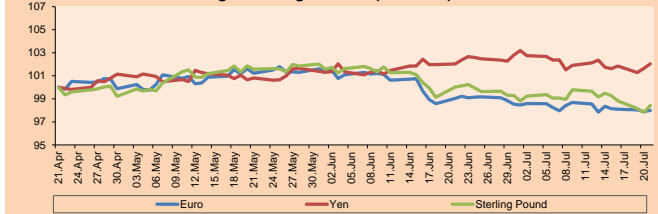


Source: Bloomberg

Currency	Price	1 D*	5 D*	1 M*	YTD*
▲ Euro	1.1794	0.11%	-0.36%	-1.05%	-3.45%
▲ Yen	110.2900	0.40%	0.29%	0.02%	6.82%
▲ Sterling Pound	1.3713	0.62%	-1.06%	-1.59%	0.31%
▼ Yuan	6.4680	-0.26%	-0.02%	0.02%	-0.91%
▲ Hong Kong Dollar	7.7731	0.00%	0.08%	0.10%	0.26%
▼ Brazilian Real	5.1881	-0.64%	2.30%	3.45%	-0.20%
▲ Argentine Peso	96.3707	0.04%	0.22%	1.04%	14.53%

*Legend: Variation 1D: 1 Day; 5D: 5 Days; 1M: 1 Month; YTD: Var.% 12/31/20 to date

Foreign Exchange Indices (3 months)

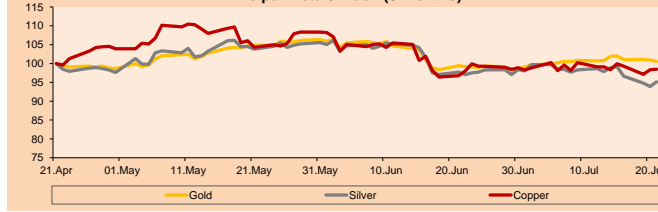


Base: 21/04/21=100
Source: Bloomberg

Commodities	Close	1 D*	5 D*	1 M*	YTD*
▼ Oro (US\$ Oz. T) (LME)	1,803.66	-0.37%	-1.31%	1.14%	-4.99%
▲ Plata (US\$ Oz. T) (LME)	25.26	1.31%	-3.77%	-2.66%	-4.32%
▲ Cobre (US\$ TM) (LME)	9,318.00	0.15%	0.17%	1.79%	20.25%
▲ Zinc (US\$ TM) (LME)	2,909.05	-1.15%	0.00%	3.03%	6.58%
▲ Petróleo WTI (US\$ Barril) (NYM)	70.30	4.61%	-3.22%	-2.40%	45.88%
▲ Estarño (US\$ TM) (LME)	34,265.00	0.10%	1.82%	8.01%	66.78%
▲ Plomo (US\$ TM) (LME)	2,354.00	0.54%	2.77%	9.58%	19.14%
▲ Azúcar #11 (US\$ Libra) (NYB-ICE)	17.67	1.49%	4.37%	3.51%	25.85%
▲ Cacao (US\$ TM) (NYB-ICE)	2,265.00	0.35%	-5.70%	-4.75%	-9.62%
▲ Café Arábica (US\$ TM) (NYB-ICE)	176.00	5.52%	12.39%	14.25%	32.03%

*Legend: Variación 1D: 1 Día; 5D: 5 Días; 1M: 1 Mes; YTD: Var.% 31/12/20 a la fecha

Principal Metals Index (3 months)



Base: 21/04/21=100
Source: Bloomberg

Equity

Germany (Stocks from DAX Index)

Largest gains	Curr.	Price	▲ %	Exchange	Largest losses	Curr.	Price	▼ %	Exchange
MTX GY	EUR	204.5	4.31	Xetra	DWNI GY	EUR	51.4	-0.50	Xetra
DBK GY	EUR	10.5	4.27	Xetra	MRK GY	EUR	167.65	-0.36	Xetra
MUV2 GY	EUR	228.05	3.45	Xetra	DHER GY	EUR	121.3	0.62	Xetra
IFX GY	EUR	32	3.34	Xetra	FME GY	EUR	68.26	0.80	Xetra

Europe (Stocks from STOXX EUROPE 600)

Largest gains	Curr.	Price	▲ %	Exchange	Largest losses	Curr.	Price	▼ %	Exchange
CCLLN	Gbp	1465.4	9.36	Londres	SRT3 GY	EUR	469.3	-3.56	Xetra
FUTR LN	Gbp	3504	9.16	Londres	TELIA SS	SEK	38.145	-3.43	Stockholm
AOX GY	EUR	18.58	9.04	Xetra	PKN PW	PLN	70.44	-2.84	Warsaw
RR/LN	GBP	97	7.75	Londres	RMG LN	GBP	516.2	-2.71	Londres

Global Overview:

United States:

The major U.S. indices closed higher on the back of solid corporate earnings reports. The second quarter reporting season has been very positive; of the 73 S&P 500 companies that have posted earnings 88% have exceeded consensus expectations. In addition, optimism about the U.S. economic recovery fueled investors' appetite for risk. Benchmark bond yields continued their gains following the 20-year bond auction, which benefited rate-sensitive banks. Thus, the S&P 500 closed higher driven by the energy sector +3.5% due to higher oil prices. In corporate stocks Coca-Cola +1.33%, Johnson & Johnson +0.50% posted positive returns following an upgrade in their earnings forecasts. On the other hand, NVIDIA completed its 4-to-1 stock split; the above raised trading volume and a 4.29% increase in its price. Thus, Dow Jones +0.83%; S&P 500 +0.82%; NASDAQ +0.92% ended the session with positive performances.

Europe:

Major indices on the European continent ended the session with bullish returns on the back of upbeat updates from European blue chip firms. The result helped the region's benchmark index recover from Monday's sharp losses. The pan-European STOXX 600 Index maintained the previous session's winning streak, supported by a rebound in travel stocks that rose 4.2%. According to data from Refinitiv IBES, companies are expected to post a 115.2% increase from the second quarter of the previous year. Investors expect the ECB to maintain a dovish tone at Thursday's policy meeting. In the United Kingdom, the index closed in the green, on the verge of surpassing the 7,000-point barrier. The pound appreciated by 0.30% against the euro, and by 0.44% against the dollar. In Germany, stocks finished higher, driven by the industrial, technology and insurance sectors. Among the stocks highlighted by CNBC News, we have Daimler +1.10%, ASM International +3.55%, BE Semiconductor +2.99% and Julius Baer +1.76%. Thus, STOXX 600 +1.65%; FTSE 100 +1.70%; CAC 40 +1.85%; DAX +1.36%; closed the day with gains.

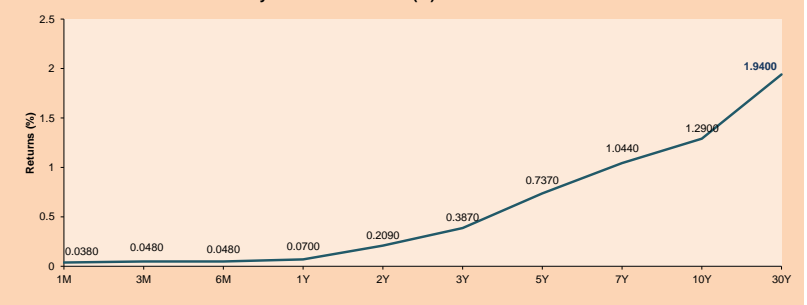
Asia:

The main Asian indices closed mostly with mixed results, but with an upward trend after concerns about the increase in Covid-19 cases and the momentum of the American market subsided in part. The Chinese market closed with gains thanks to the momentum of the American market and with positive returns in the Information Technology sectors +2.95% and Materials +2.47%. Meanwhile, in Hong Kong, concern about Covid-19 outweighed the American recovery and caused losses in the Health sector -3.09%. On the other hand, the Japanese market closed with gains as a result of less concern from investors regarding the cases of the delta variant and with positive returns in the Real Estate and Public Transport sectors. Finally, the Australian market closed with positive returns thanks to gains within the Healthcare sectors +1.09%, Materials +1.08% and Finance +1.02%, although the gains within the materials sector were diminished by a mixed performance in the market of the commodities. Thus, NIKKEI +0.58%; HANG SENG -0.13%; CSI 300 +0.69%; S & P / ASX 200 +0.78%; KOSPI -0.52% closed the day with mixed returns tending towards the positive.

ETFs

ETFs	Curr.	Close	1D	5D	30 D	YTD	Exchange
SPDR S&P 500 ETF TRUST	USD	434.55	0.81%	-0.39%	3.25%	16.23%	NYSE Arca
ISHARES MSCI EMERGING MARKET	USD	53.20	0.64%	-1.26%	-2.31%	2.96%	NYSE Arca
ISHARES IBOXX HIGH YLD CORP	USD	87.73	0.24%	-0.14%	0.15%	0.49%	NYSE Arca
FINANCIAL SELECT SECTOR SPDR	USD	36.60	1.72%	0.27%	1.92%	24.15%	NYSE Arca
VANECK GOLD MINERS	USD	33.62	0.98%	-3.22%	-3.31%	-6.86%	NYSE Arca
ISHARES RUSSELL 2000 ETF	USD	222.06	1.72%	1.46%	-2.12%	13.26%	NYSE Arca
SPDR GOLD SHARES	USD	168.76	-0.37%	-1.33%	1.08%	-5.38%	NYSE Arca
ISHARES 20+ YEAR TREASURY BO	USD	148.10	-1.27%	0.84%	3.36%	-6.11%	NASDAQ GM
INVECO QQQ TRUST SERIES 1	USD	361.56	0.77%	-0.42%	4.99%	15.24%	NASDAQ GM
ISHARES BIOTECHNOLOGY ETF	USD	164.84	0.46%	3.74%	2.90%	8.81%	NASDAQ GM
ENERGY SELECT SECTOR SPDR	USD	48.25	3.49%	-3.07%	-8.91%	29.95%	NYSE Arca
PROSHARES ULTRA VIX ST FUTUR	USD	28.16	-9.45%	4.03%	-13.25%	73.56%	Cboe BZX
UNITED STATES OIL FUND LP	USD	48.27	3.78%	-2.88%	-2.21%	46.23%	NYSE Arca
ISHARES MSCI BRAZIL ETF	USD	38.73	1.47%	-3.85%	-5.14%	4.48%	NYSE Arca
SPDR S&P OIL & GAS EXP & PR	USD	84.75	4.81%	-3.12%	-11.14%	44.87%	NYSE Arca
UTILITIES SELECT SECTOR SPDR	USD	64.78	-1.10%	-0.15%	0.54%	3.32%	NYSE Arca
ISHARES US REAL ESTATE ETF	USD	106.10	-0.16%	0.58%	2.54%	23.88%	NYSE Arca
SPDR S&P BIOTECH ETF	USD	130.25	0.92%	3.41%	-3.37%	-7.48%	NYSE Arca
ISHARES IBOXX INVESTMENT GRA	USD	135.27	-0.35%	0.30%	1.28%	-2.07%	NYSE Arca
ISHARES JP MORGAN US EMERGI	USD	112.40	-0.38%	0.09%	0.18%	-3.03%	NASDAQ GM
REAL ESTATE SELECT SECT SPDR	USD	46.19	-0.30%	0.17%	2.83%	26.34%	NYSE Arca
ISHARES CHINA LARGE-CAP ETF	USD	43.72	0.30%	-1.33%	-4.02%	-5.84%	NYSE Arca
CONSUMER STAPLES SPDR	USD	70.67	-0.25%	0.04%	2.21%	4.77%	NYSE Arca
VANECK JR GOLD MINERS	USD	44.50	2.28%	-4.75%	-7.91%	-17.96%	NYSE Arca
SPDR BBO BARC HIGH YIELD BND	USD	109.64	0.32%	-0.12%	0.16%	0.64%	NYSE Arca
VANGUARD REAL ESTATE ETF	USD	105.82	-0.01%	0.58%	1.86%	24.60%	NYSE Arca
GRAYSCALE BITCOIN TRUST BTC	USD	26.03	8.37%	-3.16%	-6.03%	-18.66%	OTC US

USA Treasury Bonds Yield Curve (%)



Source: Bloomberg

LIMA

Stocks

Ticker	Currency	Price	1D*	5D*	30D*	YTD*	Frequency	Volume (US\$)	Beta	Dividend Yield (%)	Price Earning	Market Cap. (M US\$)	Economic Sector*	Index Weight
▲ ALICORC1 PE**	S/.	6.00	0.35%	-1.53%	-3.58%	-11.84%	100.00%	2,915,007	0.98	4.17	11.32	1,296.31	Industrial	3.53%
▲ ATACOBC1 PE**	S/.	0.09	0.00%	-7.22%	-10.00%	-34.78%	36.84%	1,561	1.18	0.00	-	21.54	Mining	1.02%
▼ BACKUS1 PE**	S/.	18.35	-0.54%	-3.37%	4.86%	-8.93%	68.42%	9,305	0.74	7.01	8.85	6,307.22	Industrial	0.82%
▲ BAP PE**	US\$	122.04	3.12%	2.65%	4.96%	-24.01%	100.00%	629,258	1.13	0.00	-	11,518.42	Diverse	5.82%
▲ BVN PE**	US\$	8.68	3.33%	3.83%	-4.93%	-27.67%	84.21%	86,607	1.13	0.00	-	2,388.40	Mining	5.88%
- CASAGRC1 PE**	S/.	4.00	0.00%	0.00%	1.27%	-15.79%	52.63%	15,202	1.23	18.70	2.95	85.37	Agricultural	1.31%
▲ BBVAC1 PE**	S/.	1.90	3.83%	2.15%	2.43%	-9.35%	100.00%	36,749	1.09	2.30	28.08	3,253.46	Finance	2.85%
▲ CORARE1 PE**	S/.	1.05	2.94%	7.14%	11.70%	17.98%	100.00%	25,656	1.35	22.74	3.36	327.73	Industrial	1.72%
▲ CPACASC1 PE**	S/.	4.95	0.81%	1.02%	-4.81%	-6.60%	89.47%	16,840	0.70	15.96	35.36	583.44	Industrial	2.38%
▲ CVERDEC1 PE**	US\$	16.50	4.10%	3.77%	5.10%	-21.13%	94.74%	215,186	1.43	3.46	9.45	5,775.92	Mining	5.25%
- ENGEPEC1 PE**	S/.	1.93	0.00%	-1.03%	-3.02%	-3.50%	52.63%	13,468	0.68	0.00	11.80	1,388.12	Public Services	1.44%
- ENDISPC1**	S/.	3.85	0.00%	0.00%	-1.28%	-28.70%	52.63%	9,585	0.77	4.43	8.66	622.89	Public Services	0.98%
- FERREY1 PE**	S/.	1.66	0.00%	4.40%	14.48%	-4.60%	100.00%	743,705	1.09	10.97	7.33	40.36	Diverse	4.90%
- AENZAC1 PE**	S/.	1.43	0.00%	-1.38%	17.21%	-17.82%	73.68%	5,937	0.75	0.00	-	315.90	Diverse	4.05%
▲ IFS PE**	US\$	24.10	1.26%	4.28%	-3.98%	-22.11%	89.47%	85,373	1.20	3.20	14.33	2,782.29	Diverse	7.22%
- INRETC1 PE**	US\$	36.30	0.00%	0.75%	3.66%	-7.40%	100.00%	3,630	0.81	1.88	78.44	3,731.91	Diverse	5.28%
▲ LUSURC1 PE**	S/.	10.90	0.46%	-3.11%	-1.54%	-57.25%	68.42%	25,690	0.73	10.23	11.81	1,344.79	Public Services	1.81%
▲ MINSUR1 PE**	S/.	2.34	4.00%	1.74%	-6.77%	26.49%	94.74%	119,485	0.96	14.28	4.51	1,709.25	Mining	3.09%
- PML PE**	US\$	0.10	0.00%	-5.00%	1.06%	-10.38%	42.11%	22,019	1.41	0.00	-	25.12	Mining	2.12%
▲ RELAPAC1 PE**	S/.	0.15	0.68%	-3.92%	12.21%	113.04%	94.74%	9,095	1.13	0.00	3.79	309.84	Industrial	2.12%
- SCCO PE**	US\$	61.16	0.00%	-4.82%	0.59%	-7.19%	73.68%	40,483	0.98	0.00	21.25	47,281.16	Mining	2.14%
▼ SIDERC1 PE**	S/.	1.00	-0.99%	2.04%	8.70%	17.65%	78.95%	33,131	0.94	22.45	5.00	224.97	Industrial	1.43%
- TV PE**	US\$	0.17	0.00%	-4.62%	-5.71%	12.24%	84.21%	18,780	1.24	0.00	-	163.20	Mining	2.93%
- UNACEMC1 PE**	S/.	1.25	0.00%	1.63%	3.31%	-19.35%	100.00%	240,300	1.14	3.68	9.87	575.81	Industrial	3.00%
▲ VOLCABC1 PE**	S/.	0.47	3.98%	2.17%	-4.08%	-9.62%	100.00%	402,035	1.56	0.00	-	485.44	Mining	5.90%
- NEXAPEC1 PE**	S/.	2.75	0.00%	-3.51%	-10.13%	-2.83%	26.32%	8,473	1.11	0.00	20.84	921.14	Mining	1.56%

Quantity of shares: 26
 Source: Bloomberg, Económica
 * Bloomberg Industry Classification System
 ** PER is used in the stock market and original currency of the instrument
 *Legend: Variation 1D: 1 Day; 5D: 5 Days, 1M: 1 Month; YTD: Var.% 12/31/20 to date

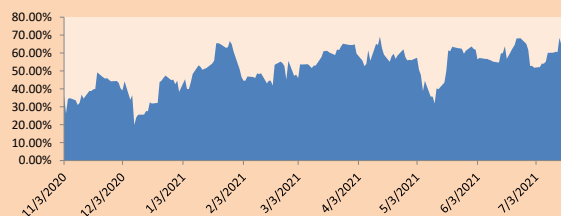
Sectorial Indices

	Close	1D*	5D*	30D*	YTD*	Beta
▲ S&P/BVLMining	375.71	1.12%	-2.49%	-1.54%	-3.65%	0.99
▲ S&P/BVLConsumer	1,042.65	0.16%	0.22%	1.42%	-4.22%	0.77
▲ S&P/BVLIndustrials	185.70	0.23%	1.64%	6.70%	-2.55%	0.86
▲ S&P/BVLFinancials	865.51	2.82%	2.29%	3.72%	-16.29%	1.10
▲ S&P/BVLConstruction	198.38	0.32%	0.65%	3.61%	-5.14%	0.78
- S&P/BVLPublicSvcs	510.24	0.00%	-0.08%	-2.44%	-16.91%	0.41
- S&P/BVLElectricUtil	498.12	0.00%	-0.08%	-2.44%	-16.91%	0.41

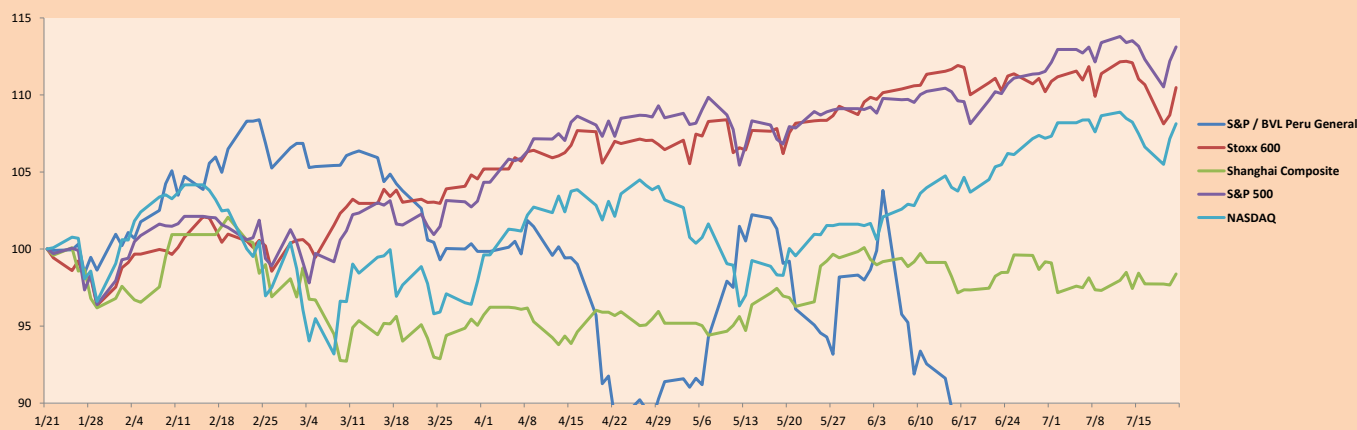
S&P/BVLConstructionTRPEN

*Legend: Variation 1D: 1 Day; 5D: 5 Days, 1M: 1 Month; YTD: Var.% 12/31/20 to date

Correlation Graph of Returns of Mining Index against Metallic Index of London (3 months)



Indices (6 months)



Base: 21/01/21=100
 Source: Bloomberg

Capital Market Laboratory Coordinator: Economist Bruno Bellido
 Collaboration: Maria Camarena, Alonso García, Adrian Paredes y Jairo Valverde
 email: pulsobursatil@ulima.edu.pe
 facebook: www.facebook.com/pulsobursatil.ul

SOVEREIGN RATING

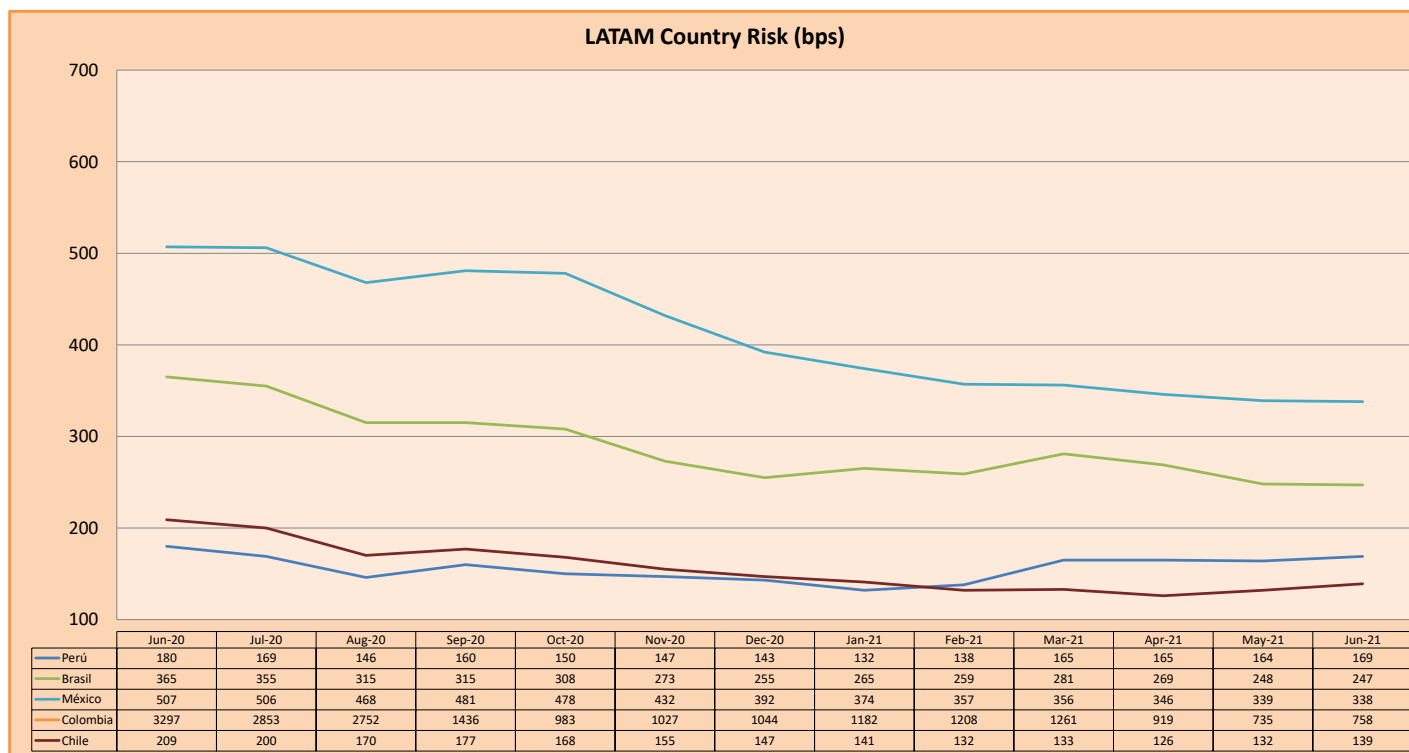
RISK RATINGS

Moody's	S&P	Fitch	
Aaa	AAA	AAA	Prime
Aa1	AA+	AA+	High credit quality
Aa2	AA	AA	
Aa3	AA-	AA-	
A1	A+	A+	Medium-high grade, with low credit risk
A2	A	A	
A3	A-	A-	
Baa1	BBB+	BBB+	Moderate Credit Risk
Baa2	BBB	BBB	
Baa3	BBB-	BBB-	
Ba1	BB+	BB+	It has speculative elements and it is subject to substantial credit risk
Ba2	BB	BB	
Ba3	BB-	BB-	
B1	B+	B+	It is considered speculative and it has high credit risk
B2	B	B	
B3	B-	B-	
Caa1	CCC+		Bad credit conditions and it is subject to high credit risk
Caa2	CCC		
Caa3	CCC-	CCC	
Ca	C		Very close to default or in default
		DDD	
C	D	DD D	

Source: Bloomberg

Latin America Credit Rating			
Clasificadora de riesgo			
Country	Moody's	Fitch	S&P
Peru	A3	BBB+	BBB+
México	Ba2	BB-	BB-
Venezuela	C	WD	SD
Brazil	Ba2	BB-	BB-
Colombia	Baa2	BB+	BB+
Chile	A1	A-	A
Argentina	Ca	WD	CCC+
Panama	Baa2	BBB-	BBB

Source: Bloomberg



Source: BCRP

Capital Market Laboratory Coordinator: Economist Bruno Bellido
Collaboration: María Camarena, Alonso García, Adrian Paredes y Jairo Valverde
email: pulsobursatil@ulima.edu.pe
facebook: www.facebook.com/pulsobursatil.ul