

# PULSO BURSÁTIL

FACULTAD DE CIENCIAS EMPRESARIALES Y ECONÓMICAS  
CARRERA DE ECONOMÍA  
LABORATORIO DE MERCADO DE CAPITALES

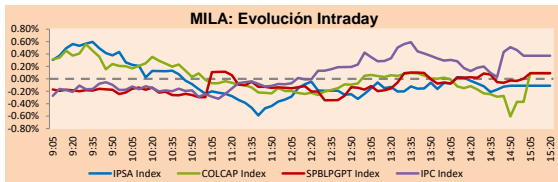


## MILA

Lima, July 22, 2021

Main Indexes	Close	1 D	5 D	1 M	YTD	Cap. Burs. (US\$ bill)
▲ IPISA (Chile)	4,288.05	0.32%	3.12%	-1.92%	2.65%	114.26
▲ IGPA (Chile)	21,422.16	0.23%	2.62%	-2.32%	1.97%	135.77
▲ COLSC (Colombia)	933.76	0.02%	-1.35%	-3.41%	-11.83%	4.27
▲ COLCAP (Colombia)	1,251.87	0.09%	-2.54%	0.74%	-12.94%	72.78
▲ S&P/BVL (Perú)*	18,759.91	0.09%	0.84%	0.19%	-9.90%	89.11
▲ S&P/BVL SEL (Perú)	499.88	0.25%	1.07%	0.59%	-9.35%	81.09
▲ S&P/BVL LIMA 25	24,515.22	0.53%	1.23%	2.48%	-2.71%	88.36
▲ IPC (México)	50,240.51	0.41%	-0.07%	0.22%	14.01%	304.08
▼ S&P MILA 40	466.60	-0.10%	0.57%	-1.93%	-12.72%	6,117.70

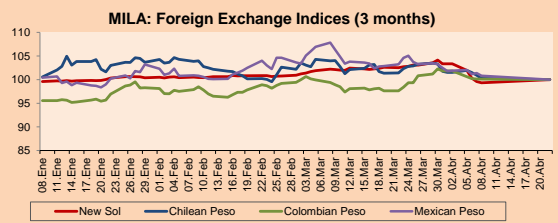
\*Legend: Variation 1D: 1 day; 5D: 5 days; 1M: 1 Month; YTD: Var% 12/31/20 to date



Source: Bloomberg

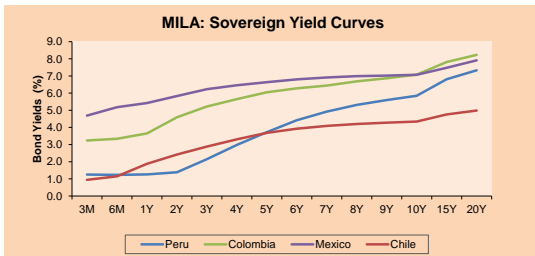
Currency	Price	1D*	5D*	30 D*	YTD*
▼ Sol (PEN)	3,9345	-0.31%	-0.33%	-1.13%	8.75%
▲ Chilean Peso (CLP)	754.35	0.26%	-0.47%	1.62%	5.98%
▲ Colombian Peso (COP)	3,870.01	0.40%	1.78%	2.32%	12.84%
▼ Mexican Peso (MXN)	20.12	-0.17%	0.87%	-1.17%	1.02%

\*Legend: Variation 1D: 1 day; 5D: 5 days; 1M: 1 Month; YTD: Var% 12/31/20 to date



Base: 22/04/21=100  
Source: Bloomberg

Fixed Income	Currency	Price	Bid Yield (%)	Ask Yield (%)	Duration
PERU 7.35 07/21/25	USD	122.658	1.54	1.41	3.57
PERU 4.125 08/25/27	USD	112.228	2.03	1.94	5.40
PERU 8.75 11/21/33	USD	158.234	3.08	3.01	8.67
PERU 6.55 03/14/37	USD	139.129	3.35	3.29	10.29
PERU 5.625 11/18/2050	USD	140.392	3.45	3.41	16.75
CHILE 2.25 10/30/22	USD	102.22	0.66	0.31	1.25
CHILE 3.125 01/21/26	USD	107.733	1.40	1.29	4.24
CHILE 3.625 10/30/42	USD	106.985	3.20	3.14	15.32
COLOM 11.85 03/09/28	USD	158.036	2.46	2.21	5.02
COLOM 10.375 01/28/33	USD	149.429	4.83	4.67	7.48
COLOM 7.375 09/18/37	USD	130.417	4.71	4.63	10.25
COLOM 6.125 01/18/41	USD	117.669	4.76	4.69	12.21
MEX 4 10/02/23	USD	117.669	4.76	4.694	12.21
MEX5.55 01/45	USD	122.528	4.07	4.04	14.36



Source: Bloomberg

### Equity

Largest gains	Exchange	Currency	Price	▲%
FERREYCORP SAA	Peru	PEN	1.77	6.63
SOQUIMICH-B	Chile	CLP	3780.00	2.86
CONCHATORO	Chile	CLP	1335.00	2.68
CORFICOLOMBIANA	Colombia	COP	29670.00	2.24
ISA SA	Colombia	COP	22780.00	1.92

Per Turnover	Exchange	Amount (US\$)
GRUPO AVAL SA-PF	Colombia	57,817,964
GRUPO F BANORT-O	Mexico	34,193,842
AMERICA MOVIL-L	Mexico	21,567,535
WALMART DE MEXIC	Mexico	20,782,368
GRUMA SAB-B	Mexico	19,670,317

Largest losses	Exchange	Currency	Price	▼%
GRUPO AVAL SA-PF	Colombia	COP	1031	-3.64
GRUPO NUTRESA SA	Colombia	COP	20910	-2.29
FALABELLA SA	Chile	CLP	2992.6	-2.17
BUENAVENTURA-ADF	Peru	USD	8.53	-1.73
PARQUE ARAUCO	Chile	CLP	1012.5	-1.49

Per Volume	Exchange	Volume
GRUPO AVAL SA-PF	Colombia	223,565,497
ITAU CORPBANCA	Chile	206,402,703
BANCO SANTANDER	Chile	110,702,261
BANCO DE CHILE	Chile	82,720,806
ENEL AMERICAS SA	Chile	31,196,883

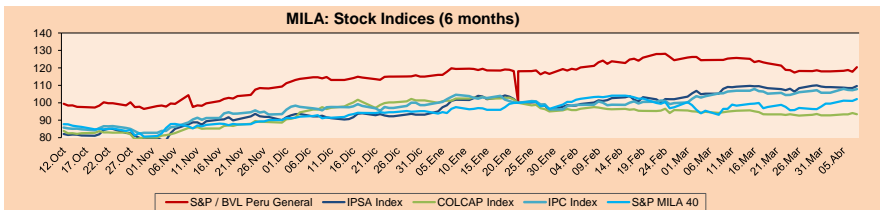
### MILA

Peru: The General Index of the BVL ended today's session with a positive result of +0.09%. The index maintains an annual accumulated negative trend of -9.90% in local currency, while the adjusted return in dollars amounts to -17.15%. Then, the S&P / BVL Peru SEL changed by +0.25% while the S&P / BVL LIMA 25 by +0.53%. The PEN spot reached 5 / 3.9345. Headline: Credit to companies will be contracted for the payment of debts of Reactiva Peru

Chile: The IPISA index ended the day with a positive return of +0.32%. The sectors that benefited the most from the conference were Materials (+1.79%) and Information Technology (+0.89%). The stocks with the best performance were Sociedad Química y Minera Chile-B (+2.86%) and Viña Concha y Toro (+2.68%). Headline: Chilean Stock Exchange Marks New Earnings from Enjoy Following the Comptroller's Opinion.

Colombia: The COLCAP index ended the day with a positive return of +0.32%. The sectors that benefited the most from the conference were Communication Services (+1.94%) and Public Services (+0.55%). The best performing stocks were Corp. Financiera Colombiana (+2.24%) and Empresa de Telecomunicaciones de Bogotá (+1.94%). Headline: Dollar in Colombia expanded earnings

Mexico: The IPC index closed the day with a positive return of +0.41%. The sectors that benefited the most from the session were First Needs Products (+0.59%) and Industrial (+0.08%). The best performing stocks were Grupo de Cementos Chihuahua (+3.93%) and Asea SAB de CV (+3.80%). Headline: TV Azteca almost five times its operating flow in Q2 2021

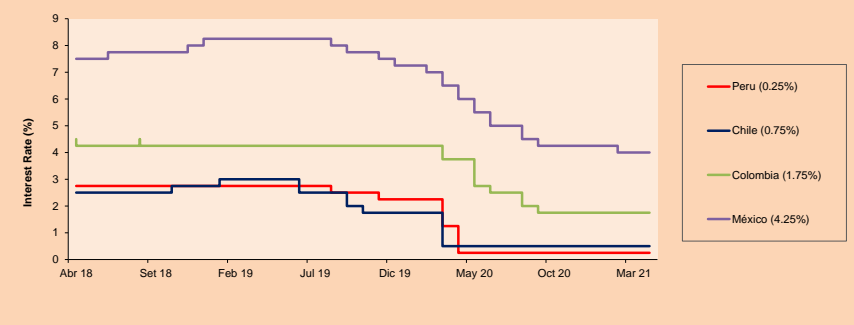


Base: 12/10/20=100  
Source: Bloomberg

### ETFs

ETFs	Curr.	Close	1D	5D	30 D	YTD	Exchange
▼ iShares MSCI All Peru Caped Index Fund	USD	28.38	-1.01%	-0.67%	1.25%	-18.17%	NYSE Arca
▼ iShares MSCI All Chile Caped Index Fund	USD	27.72	-1.74%	3.39%	-3.72%	-8.24%	Cboe BZX
▲ Global X MSCI Colombia	USD	9.53	-0.52%	-3.25%	-3.15%	-16.11%	NYSE Arca
▲ iShares MSCI Mexico Capped	USD	47.81	0.82%	-1.22%	1.44%	11.21%	NYSE Arca
▲ iShares MSCI Emerging Markets	USD	53.3	0.19%	-1.31%	-1.68%	3.15%	NYSE Arca
▲ Vanguard FTSE Emerging Markets	USD	52.78	0.15%	-1.07%	-1.18%	5.33%	NYSE Arca
▲ iShares Core MSCI Emergina Markets	USD	65.11	0.20%	-1.17%	-1.23%	4.95%	NYSE Arca
▲ iShares JP Morgan Emerging Markets Bonds	USD	62.88	0.02%	-0.95%	-1.10%	2.95%	Cboe BZX
▲ Morgan Stanley Emerging Markets Domestic	USD	6.05	0.50%	-0.49%	-1.47%	-3.82%	New York

### MILA: Policy Rate



Source: Bloomberg

Capital Market Laboratory Coordinator: Economist Bruno Bellido  
Collaboration: Maria Camarena, Alonso Garcia, Adrian Paredes y Jairo Valverde  
email: pulsobursatil@ulima.edu.pe  
facebook: www.facebook.com/pulsobursatil

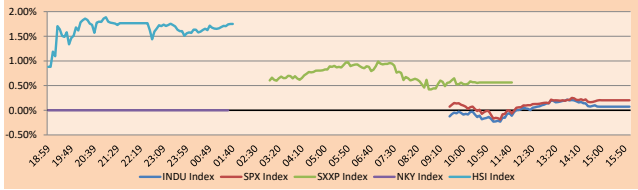
The content of this document is just for informational purposes. The information and opinions expressed should not be considered as recommendations for future decisions. Under any circumstances, the Capital Market Laboratory of University of Lima will be responsible for the use of the statements in this document.

WORLD

Main Indices	Close	1 D*	5 D*	1 M*	YTD*	Market Cap. (US\$ Mill.)
▲ Dow Jones (USA)	34,823.35	0.07%	-0.47%	2.59%	13.76%	10,763,128
▲ Standard & Poor's 500 (EEUU)	4,367.48	0.20%	0.17%	2.85%	16.28%	38,595,318
▲ NASDAQ Composite (USA)	14,684.60	0.36%	0.97%	3.03%	13.94%	24,495,985
▲ Stoxx EUROPE 600 (Europe)	456.53	0.56%	0.07%	0.76%	14.41%	10,797,781
▲ DAX (Germany)	15,514.54	0.60%	-0.74%	0.38%	13.09%	1,180,195
▼ FTSE 100 (United Kingdom)	6,968.30	-0.43%	-0.62%	-1.50%	7.96%	1,474,838
▲ CAC 40 (France)	6,481.59	0.28%	-0.18%	-1.00%	16.76%	1,829,432
▲ IBEX 35 (Spain)	8,621.80	0.64%	-1.11%	-3.71%	6.79%	491,309
▲ MSCI AC Asia Pacific Index	202.83	0.94%	-1.51%	-1.96%	1.46%	26,217,336
▲ HANG SENG (Hong Kong)	27,723.84	1.83%	-0.97%	-3.79%	1.81%	4,254,723
▲ SHANGHAI SE Comp. (China)	3,574.73	0.34%	0.29%	0.24%	2.93%	6,995,089
▲ NIKKEI 225 (Japan)	27,548.00	0.58%	-3.71%	-4.63%	0.38%	3,824,935
▲ S&P / ASX 200 (Australia)	7,386.41	1.06%	0.69%	1.21%	12.13%	1,745,305
▲ KOSPI (South Korea)	3,250.21	0.41%	-0.07%	-0.79%	13.11%	1,912,338

\*Legend: Variation 1D: 1 Day; 5D: 5 Days; 1M: 1 Month; YTD: Var. % 12/31/20 to date

Global Markets: Intraday Evolution (var %)

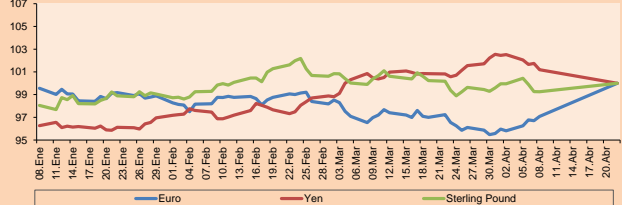


Source: Bloomberg

Currency	Price	1 D*	5 D*	1 M*	YTD*
▼ Euro	1.1771	-0.20%	-0.35%	-1.42%	-3.64%
▼ Yen	110.1400	-0.14%	0.29%	-0.46%	6.97%
▲ Sterling Pound	1.3768	0.40%	-0.44%	-1.30%	0.72%
▼ Hong Kong Dollar	6.4707	0.04%	0.15%	-0.16%	-0.87%
▲ Brazilian Real	7.7708	-0.03%	0.04%	0.05%	0.23%
▲ Argentine Peso	5.2017	0.28%	1.78%	4.88%	0.06%
▲ Argentine Peso	96.3999	0.03%	0.23%	0.95%	14.56%

\*Legend: Variation 1D: 1 Day; 5D: 5 Days; 1M: 1 Month; YTD: Var. % 12/31/20 to date

Foreign Exchange Indices (3 months)

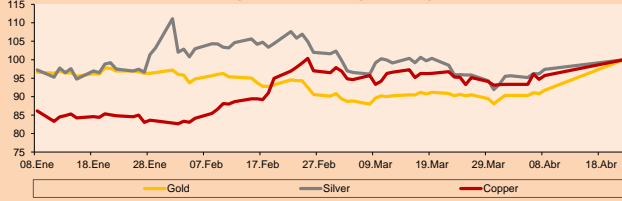


Base: 22/04/21=100  
Source: Bloomberg

Commodities	Close	1 D*	5 D*	1 M*	YTD*
▲ Oro (US\$ Oz. T) (LME)	1,806.92	0.18%	-1.23%	1.58%	-4.82%
▲ Plata (US\$ Oz. T) (LME)	25.43	0.67%	-3.46%	-1.34%	-3.68%
▲ Cobre (US\$ TM) (LME)	9,417.78	1.07%	-0.36%	1.54%	21.54%
▲ Zinc (US\$ TM) (LME)	2,920.75	0.40%	-1.17%	2.53%	7.01%
▲ Petróleo WTI (US\$ Barril) (NYM)	71.91	2.29%	0.74%	-0.19%	49.22%
▲ Estiáno (US\$ TM) (LME)	35,010.00	2.17%	3.55%	8.78%	70.41%
▲ Plomo (US\$ TM) (LME)	2,420.50	2.82%	4.23%	11.83%	22.51%
▼ Azúcar #11 (US\$ Libra) (NYB-ICE)	17.62	-0.28%	1.67%	5.20%	25.50%
▲ Cacao (US\$ TM) (NYB-ICE)	2,317.00	2.30%	-2.20%	-3.30%	-7.54%
▲ Café Arábica (US\$ TM) (NYB-ICE)	193.65	10.03%	23.30%	27.32%	45.27%

\*Legend: Variación 1D: 1 Día; 5D: 5 Días; 1M: 1 Mes; YTD: Var. % 31/12/20 a la fecha

Principal Metals Index (3 months)



Base: 22/04/21=100  
Source: Bloomberg

Equity

Germany (Stocks from DAX Index)

Largest gains	Curr.	Price	▲%	Exchange	Largest losses	Curr.	Price	▼%	Exchange
SIE GY	EUR	134	2.84	Xetra	IFX GY	EUR	31.61	-1.22	Xetra
RWE GY	EUR	29.7	2.20	Xetra	DTE GY	EUR	17.67	-1.21	Xetra
FRE GY	EUR	45.45	1.75	Xetra	HEN3 GY	EUR	85.78	-0.95	Xetra
VNA GY	EUR	59.24	1.47	Xetra	DWNI GY	EUR	50.92	-0.93	Xetra

Europe (Stocks from STOXX EUROPE 600)

Largest gains	Curr.	Price	▲%	Exchange	Largest losses	Curr.	Price	▼%	Exchange
NENTB SS	SEK	475.4	10.30	Stockholm	AOX GY	EUR	17.4	-6.35	Xetra
SAE GY	EUR	138.3	6.88	Xetra	ULVR LN	Gbp	4050.5	-5.87	Londres
SRT3 GY	EUR	496.5	5.80	Xetra	PSN LN	Gbp	2881	-4.32	Londres
DHER GY	EUR	128.1	5.61	Xetra	FR FP	EUR	22.8	-4.12	EN Paris

Global Overview:

United States:

Major US indexes closed the day with slightly positive returns as lackluster economic data and corporate earnings prompted a return to investment in tech stocks. Also, weekly jobless claims unexpectedly rose to 419,000, the highest in 2 months. This fact is fundamental for investors since it is a way of approximating the adjustment of rates by the Federal Reserve. In this way, the US stock indices benefited from the growth in stocks with the largest market capitalization. In relation to stocks, Microsoft Corp + 1.68%, Facebook Inc + 1.43%, Amazon Inc + 1.47%, among others, boosted their market today and are awaiting their quarterly results in the following week. On the other hand, the pharmaceutical company Biogen Inc + 1.1% and Domino's Pizza Inc + 14.6% increased thanks to their quarterly results. In contrast, Southwest Airlines Co -3.5% fell due to its quarterly losses and American Airlines Group Inc -1.1% also fell despite gaining on its quarterly report. Thus, DOW JONES + 0.07%; S&P 500 + 0.05%; NASDAQ + 0.36% ended the day with gains.

Europe:

European stocks closed with gains for the third consecutive day as the European Central Bank (ECB) maintained its moderate monetary policy stance, fueling investor optimism. In this regard, the ECB pledged to maintain stimulus to meet its commitment to boost inflation until it reaches the 2% target by the end of the year. On the other hand, Christine Lagarde stated that the new wave of the pandemic could pose a risk to the recovery. Thus, the Stoxx 600 closed higher driven by the travel and leisure sector +2.7% and semiconductors +2.6%. In corporate stocks, EQT+13.20%, ABB +2.30% closed higher after an increase in its earnings outlook for year-end 2021. On the other hand, in London, the FTSE 100 fell after Unilever posted losses after cutting its operating margin forecast due to rising raw material costs. Finally, the German DAX closed higher driven by the industrial sector +1.78% and Health Care +0.86%. Thus, FTSE 100 -0.43%; DAX +0.60%; CAC 40 +0.26%; IBEX 35 +0.64%.

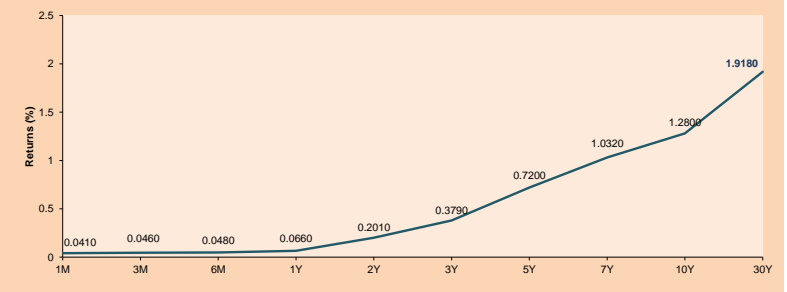
Asia:

The main Asian indices closed the session with upward results. Today's trading day was characterized by the absence of the Japanese markets, which were closed for a holiday. In China, stocks rallied on the back of gains recorded by financial and materials companies. On the other hand, data from Refinitiv showed that foreign investors extended net purchases of shares through the Stock Connect program for the fourth consecutive day. Finally, the real estate sector was boosted after Evergrande Group +7.87% announced that it had resolved legal disputes with China Guangfa Bank, and that both parties would deepen business cooperation. In South Korea, stocks closed higher, marking their best day in two months due to optimism generated by corporate earnings, despite posting a daily high of 1842 infected by COVID-19. The won and the benchmark bond yield also rose. In Australia, the index closed with gains. CNBC highlights mining company BHP +3.13% after the company announced the signing of a nickel supply agreement with Tesla. Finally, Indian stocks ended the day in the green on a string of solid corporate earnings. Thus, HANG SENG +1.83%; CSI 300 +0.15%; SHANGHAI COMPOSITE +0.34%; S&P/ASX 200 +1.06%; KOSPI +1.07% and NIFTY 50 +1.23% closed the day with positive returns.

ETFs

ETFs	Curr.	Close	1D	5D	30 D	YTD	Exchange
SPDR S&P 500 ETF TRUST	USD	435.46	0.21%	0.16%	2.92%	16.47%	NYSE Arca
ISHARES MSCI EMERGING MARKET	USD	53.30	0.19%	-1.31%	-1.68%	3.15%	NYSE Arca
ISHARES IBOXX HIGH YLD CORP	USD	87.78	0.06%	-0.01%	0.14%	0.55%	NYSE Arca
FINANCIAL SELECT SECTOR SPDR	USD	36.20	-1.09%	-1.15%	0.64%	22.80%	NYSE Arca
VANECK GOLD MINERS	USD	33.41	-0.62%	-4.46%	-3.30%	-7.25%	NYSE Arca
ISHARES RUSSELL 2000 ETF	USD	218.53	-1.55%	0.41%	-4.12%	11.46%	NYSE Arca
SPDR GOLD SHARES	USD	169.09	0.20%	-1.16%	1.71%	-5.20%	NYSE Arca
ISHARES 20+ YEAR TREASURY BO	USD	149.50	0.95%	0.68%	4.08%	-5.22%	NASDAQ GM
INVESCO QQQ TRUST SERIES 1	USD	363.95	0.66%	0.95%	4.71%	16.00%	NASDAQ GM
ISHARES BIOTECHNOLOGY ETF	USD	165.27	0.26%	3.78%	2.71%	9.10%	NASDAQ GM
ENERGY SELECT SECTOR SPDR	USD	48.70	-1.12%	-2.79%	-10.53%	28.50%	NYSE Arca
PROSHARES ULTRA VIX ST FUTUR	USD	28.84	2.41%	4.15%	-3.87%	-72.92%	Cboe BZX
UNITED STATES OIL FUND LP	USD	49.17	1.86%	0.27%	-0.51%	48.95%	NYSE Arca
ISHARES MSCI BRAZIL ETF	USD	38.66	-0.18%	-2.91%	-6.14%	4.29%	NYSE Arca
SPDR S&P OIL & GAS EXP & PR	USD	83.03	-2.03%	-3.14%	-13.42%	41.93%	NYSE Arca
UTILITIES SELECT SECTOR SPDR	USD	64.88	0.15%	-1.11%	1.31%	3.48%	NYSE Arca
ISHARES US REAL ESTATE ETF	USD	105.31	-0.74%	-0.43%	2.27%	22.95%	NYSE Arca
SPDR S&P BIOTECH ETF	USD	127.97	-1.75%	1.61%	-4.27%	-9.10%	NYSE Arca
ISHARES IBOXX INVESTMENT GRA	USD	136.83	0.41%	0.50%	1.53%	-1.67%	NYSE Arca
ISHARES JP MORGAN USD EMERGI	USD	112.65	0.22%	0.00%	0.45%	-2.81%	NASDAQ GM
REAL ESTATE SELECT SECT SPDR	USD	45.86	-0.71%	-0.89%	2.55%	25.44%	NYSE Arca
ISHARES CHINA LARGE-CAP ETF	USD	43.90	0.41%	-1.88%	-2.83%	-5.45%	NYSE Arca
CONSUMER STAPLES SPDR	USD	70.55	-0.17%	-0.54%	1.89%	4.60%	NYSE Arca
VANECK JR GOLD MINERS	USD	44.06	-0.99%	-5.79%	-8.00%	-18.77%	NYSE Arca
SPDR RBC BARO HIGH YIELD BND	USD	109.67	0.03%	-0.07%	0.16%	0.67%	NYSE Arca
VANGUARD REAL ESTATE ETF	USD	104.98	-0.73%	-0.38%	1.59%	23.61%	NYSE Arca
GRAYSCALE BITCOIN TRUST BTC	USD	27.05	3.92%	6.00%	-3.43%	-15.47%	OTC US

USA Treasury Bonds Yield Curve (%)



Source: Bloomberg

Capital Market Laboratory Coordinator: Economist Bruno Bellido  
Collaboration: María Camarena, Alonso García, Adrian Paredes y Jairo Valverde  
email: pulsobursatil@ulima.edu.pe  
facebook: www.facebook.com/pulsobursatil

# LIMA

## Stocks

Ticker	Currency	Price	1D*	5D*	30D*	YTD*	Frequency	Volume (US\$)	Beta	Dividend Yield (%)	Price Earning	Market Cap. (M US\$)	Economic Sector*	Index Weight
▲ ALICORC1 PE**	S/.	6.10	0.02%	-1.35%	-3.41%	-11.83%	100.00%	871,027	0.98	4.10	11.51	1,321.93	Industrial	3.53%
▲ ATACOCB1 PE**	S/.	0.09	0.00%	-7.22%	-10.00%	-34.78%	44.44%	1,566	1.18	0.00	-	21.61	Mining	1.02%
- BACKUSH1 PE**	S/.	18.35	0.00%	-3.37%	7.94%	-8.93%	94.44%	606	0.74	0.00	8.85	6,327.09	Industrial	0.82%
▼ BAP PE**	US\$	122.00	-0.03%	3.48%	5.16%	-24.03%	100.00%	403,334	1.13	0.00	-	11,514.64	Diverse	5.82%
▼ BVN PE**	US\$	8.53	-1.73%	-1.84%	-8.48%	-28.92%	100.00%	99,260	1.14	0.00	-	2,347.13	Mining	5.88%
- CASAGRC1 PE**	S/.	4.00	0.00%	0.00%	3.90%	-15.79%	88.89%	41,164	1.21	18.70	2.95	85.64	Agricultural	1.31%
- BBVAC1 PE**	S/.	1.90	0.00%	2.70%	2.43%	-9.35%	100.00%	190,435	1.10	2.30	28.08	3,263.71	Finance	2.85%
- CORAREH1 PE**	S/.	1.05	0.00%	7.14%	16.67%	17.98%	100.00%	129,687	1.35	22.74	3.36	331.16	Industrial	1.72%
▼ CPACASC1 PE**	S/.	4.87	-1.62%	-0.81%	-5.44%	-8.11%	94.44%	286,680	0.70	16.22	34.79	576.66	Industrial	2.38%
▼ CVERDEC1 PE**	US\$	15.90	-3.64%	-0.62%	-1.24%	-24.00%	100.00%	322,402	1.44	3.59	9.11	5,565.89	Mining	5.25%
▲ ENGPEEC1 PE**	S/.	2.03	5.18%	4.10%	2.53%	1.50%	83.33%	171,710	0.68	9.73	12.41	1,464.65	Public Services	1.44%
- ENDISPC1**	S/.	3.85	0.00%	0.00%	-1.28%	-28.70%	44.44%	9,785	0.77	4.43	8.66	624.85	Public Services	0.98%
▲ FERREYC1 PE**	S/.	1.77	6.63%	9.26%	23.78%	1.72%	100.00%	321,181	1.08	10.29	7.82	438.93	Diverse	4.90%
▲ AENZAC1 PE**	S/.	1.40	-2.10%	-3.45%	20.69%	-19.54%	88.89%	216,655	0.74	0.00	-	310.25	Diverse	4.05%
▲ IFS PE**	US\$	24.65	2.28%	4.94%	-1.20%	-20.33%	100.00%	27,264	1.20	3.12	14.64	2,845.79	Diverse	7.22%
▲ INRETC1 PE**	US\$	36.99	1.90%	0.24%	6.14%	-5.64%	100.00%	249,158	0.80	1.84	79.84	3,802.84	Diverse	5.28%
▲ LUSURC1 PE**	S/.	11.00	0.92%	-2.22%	-0.63%	-56.86%	100.00%	40,384	0.73	10.14	11.92	1,361.41	Public Services	1.81%
▼ MINSUR1 PE**	S/.	2.30	-1.71%	0.00%	-8.37%	24.32%	94.44%	184,987	0.96	14.53	4.44	1,685.32	Mining	3.09%
▼ PML PE**	US\$	0.10	0.00%	-5.00%	-5.00%	-10.38%	72.22%	22,019	1.41	0.00	-	25.12	Mining	2.12%
▼ RELAPAC1 PE**	S/.	0.15	-1.36%	-4.61%	9.85%	110.14%	94.44%	5,536	1.12	0.00	3.74	306.59	Industrial	2.12%
▼ SCCO PE**	US\$	61.16	0.00%	-3.69%	-0.59%	-7.19%	88.89%	40,483	0.98	0.00	21.25	47,281.16	Mining	2.14%
- SIDERC1 PE**	S/.	1.00	0.00%	2.04%	11.11%	17.65%	88.89%	13,893	0.94	22.45	5.00	225.68	Industrial	1.43%
- TV PE**	US\$	0.17	0.00%	-5.71%	-5.71%	12.24%	94.44%	18,780	1.24	0.00	-	163.20	Mining	2.93%
▲ UNACEMC1 PE**	S/.	1.32	5.60%	9.09%	10.00%	-14.84%	94.44%	729,168	1.14	3.48	10.42	609.97	Industrial	3.00%
▲ VOLCABC1 PE**	S/.	0.47	-0.85%	0.87%	-3.92%	-10.38%	100.00%	383,309	1.57	0.00	-	482.83	Mining	5.90%
- NEXAPEEC1 PE**	S/.	2.75	0.00%	-3.51%	-9.54%	-2.83%	72.22%	8,499	1.11	0.00	20.86	924.04	Mining	1.56%

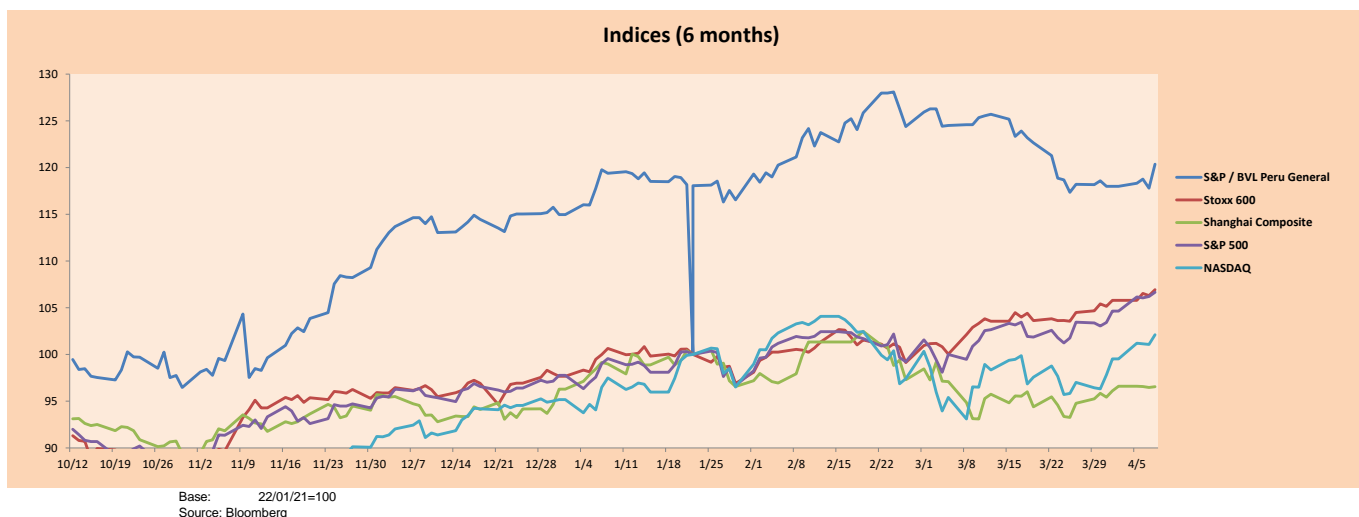
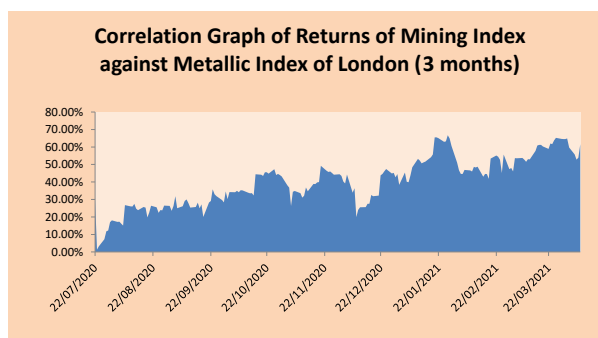
Quantity of shares: 26  
 Source: Bloomberg, Economática  
 \* Bloomberg Industry Classification System  
 \*\* PER is used in the stock market and original currency of the instrument  
 \*Legend: Variation 1D: 1 Day; 5D: 5 Days, 1M: 1 Month; YTD: Var.% 12/31/20 to date

### Sectorial Indices

	Close	1D*	5D*	30D*	YTD*	Beta
▼ S&P/BVLMining	372.22	-0.93%	-3.21%	-4.25%	-4.55%	0.95
▲ S&P/BVLConsumer	1,056.88	1.36%	0.59%	3.17%	-2.92%	0.40
▲ S&P/BVLIndustrials	190.32	2.49%	3.85%	11.16%	-0.13%	0.49
▼ S&P/BVLFinancials	864.54	-0.11%	3.17%	3.21%	-16.38%	1.77
▲ S&P/BVLConstruction	200.02	0.83%	1.81%	6.35%	-4.35%	0.53
▲ S&P/BVLPublicSvcs	518.91	1.70%	1.62%	0.13%	-15.50%	0.13
▲ S&P/BVLElectricUtil	506.58	1.70%	1.61%	0.13%	-15.50%	0.13

S&P/BVLConstructionTRPEN

\*Legend: Variation 1D: 1 Day; 5D: 5 Days, 1M: 1 Month; YTD: Var.% 12/31/20 to date



Capital Market Laboratory Coordinator: Economist Bruno Bellido  
 Collaboration: Maria Camarena, Alonso García, Adrian Paredes y Jairo Valverde  
 email: pulsobursatil@ulima.edu.pe  
 facebook: www.facebook.com/pulsobursatil

## SOVEREIGN RATING

### RISK RATINGS

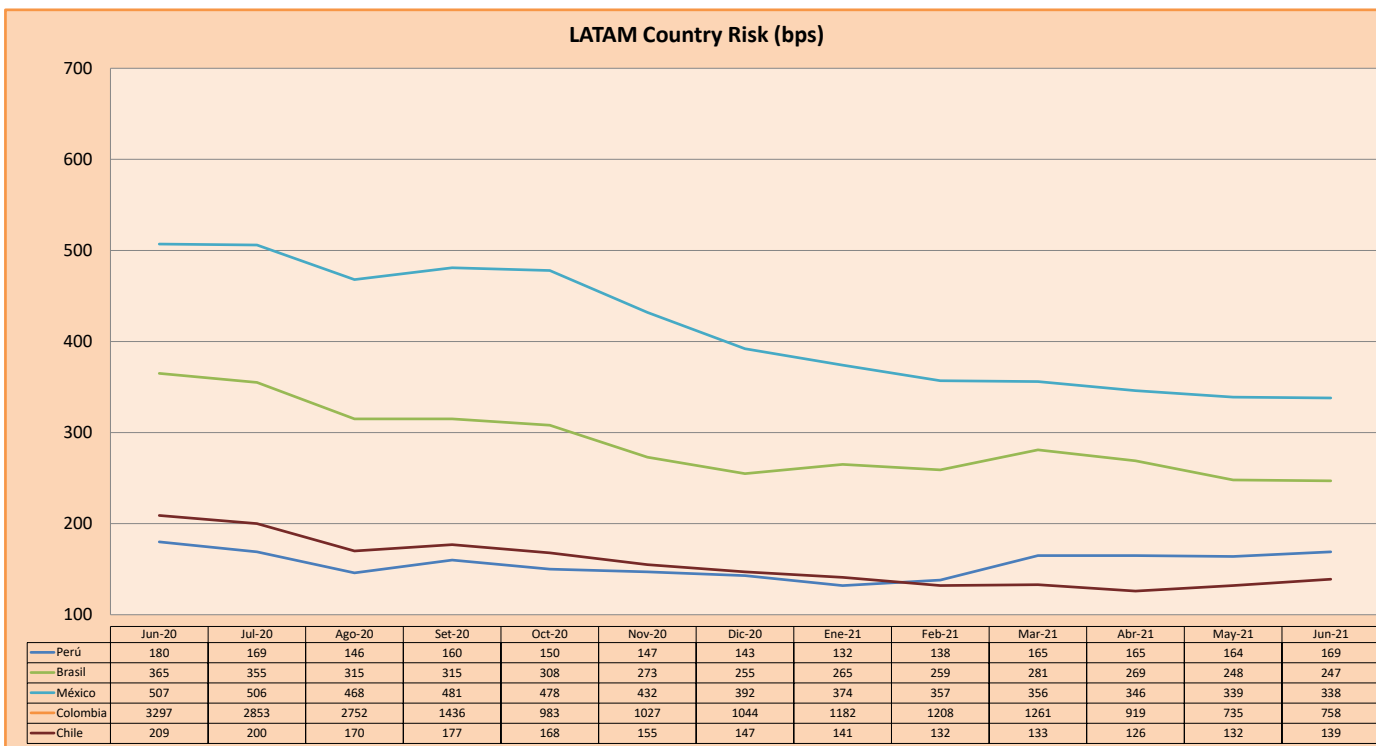
Moody's	S&P	Fitch		
Aaa	AAA	AAA	Prime	
Aa1	AA+	AA+	High credit quality	
Aa2	AA	AA		
Aa3	AA-	AA-		
A1	A+	A+	Medium-high grade, with low credit risk	
A2	A	A		
A3	A-	A-		
Baa1	BBB+	BBB+	Moderate Credit Risk	
Baa2	BBB	BBB		
Baa3	BBB-	BBB-		
Ba1	BB+	BB+	It has speculative elements and it is subject to substantial credit risk	
Ba2	BB	BB		
Ba3	BB-	BB-		
B1	B+	B+	It is considered speculative and it has high credit risk	
B2	B	B		
B3	B-	B-		
Caa1	CCC+	CCC	Bad credit conditions and it is subject to high credit risk	
Caa2	CCC			
Caa3	CCC-			
Ca	C	DDD	Very close to default or in default	
C	D			DD
				D

Source: Bloomberg

Latin America Credit Rating			
Clasificadora de riesgo			
Country	Moody's	Fitch	S&P
Peru	A3	BBB+	BBB+
México	Ba2	BB-	BB-
Venezuela	C	WD	SD
Brazil	Ba2	BB-	BB-
Colombia	Baa2	BB+	BB+
Chile	A1	A-	A
Argentine	Ca	WD	CCC+
Panama	Baa2	BBB-	BBB

Source: Bloomberg

### LATAM Country Risk (bps)



Source: BCRP

Capital Market Laboratory Coordinator: Economist Bruno Bellido  
Collaboration: María Camarena, Alonso García, Adrian Paredes y Jairo Valverde  
email: pulsohorsatil@ulima.edu.pe  
facebook: www.facebook.com/pulsohorsatil.ul