

PULSO BURSÁTIL

FACULTAD DE CIENCIAS EMPRESARIALES Y ECONÓMICAS
CARRERA DE ECONOMÍA
LABORATORIO DE MERCADO DE CAPITALES

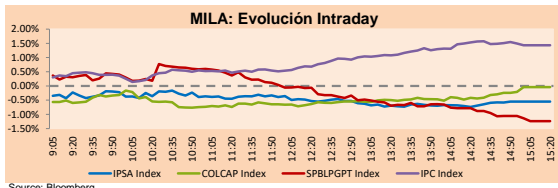


MILA

Lima, August 3, 2021

Main Indexes	Close	1 D	5 D	1 M	YTD	Cap. Burs. (US\$ bill)
▼ IPSA (Chile)	4,207.03	-0.11%	1.45%	-2.50%	0.71%	108.96
▼ IGPA (Chile)	21,042.51	-0.13%	1.34%	-2.86%	0.17%	129.30
▼ COLSC (Colombia)	921.91	-1.35%	-1.85%	-4.88%	-12.94%	4.37
▼ COLCAP (Colombia)	1,235.53	-0.04%	-1.13%	-4.18%	-14.07%	72.18
▼ S&P/BVL (Perú)*	17,624.68	-1.24%	-4.96%	-6.19%	-15.36%	87.75
▼ S&P/BVL SEL (Perú)	468.11	-2.12%	-4.94%	-5.01%	-15.11%	79.50
▼ S&P/BVL LIMA 25	22,898.31	-1.38%	-5.79%	-6.16%	-9.13%	87.02
▲ IPC (México)	51,633.91	1.50%	1.42%	2.81%	17.17%	313.30
▼ S&P MILA 40	446.59	-0.88%	-1.79%	-8.02%	-16.47%	6,230.27

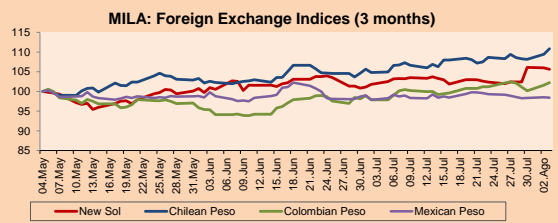
*Legend: Variation 1D: 1 day; 5D: 5 days; 1M: 1 Month; YTD: Var% 12/31/20 to date



Source: Bloomberg

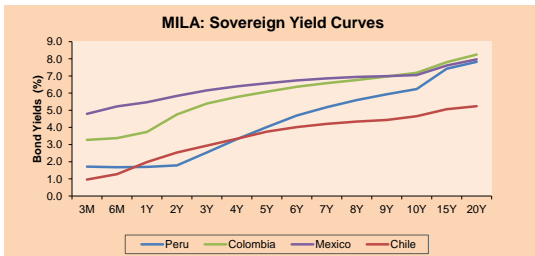
Currency	Price	1D*	5D*	30 D*	YTD*
▼ Sol (PEN)	4,0498	-0.34%	3.14%	3.79%	11.93%
▲ Chilean Peso (CLP)	777.90	1.28%	1.31%	5.76%	9.29%
▲ Colombian Peso (COP)	3,911.09	0.64%	-0.20%	4.48%	14.03%
▼ Mexican Peso (MXN)	19.89	-0.10%	-0.46%	0.58%	-0.14%

*Legend: Variation 1D: 1 day; 5D: 5 days; 1M: 1 Month; YTD: Var% 12/31/20 to date



Base: 04/05/21=100
Source: Bloomberg

Fixed Income	Currency	Price	Bid Yield (%)	Ask Yield (%)	Duration
PERU 7.35 07/21/25	USD	122.584	1.51	1.41	3.54
PERU 4.125 08/25/27	USD	112.162	2.04	1.93	5.36
PERU 8.75 11/21/33	USD	157.373	3.14	3.07	8.61
PERU 6.55 03/14/37	USD	138.533	3.39	3.33	10.22
PERU 5.625 11/18/2050	USD	139.205	3.50	3.46	16.62
CHILE 2.25 10/30/22	USD	102.276	0.58	0.22	1.22
CHILE 3.125 01/21/26	USD	108.331	1.25	1.15	4.20
CHILE 3.625 03/30/42	USD	109.465	3.04	3.00	15.34
COLOM 11.85 03/09/28	USD	157.666	2.51	2.20	4.98
COLOM 10.375 01/28/33	USD	150.14	4.78	4.58	7.72
COLOM 7.375 09/18/37	USD	130.575	4.69	4.62	10.22
COLOM 6.125 01/18/41	USD	118.486	4.70	4.64	12.20
MEX 4 10/02/23	USD	118.486	4.701	4.636	12.2
MEX5.55 01/45	USD	122.725	4.06	4.02	14.33



Source: Bloomberg

Equity

Largest gains	Exchange	Currency	Price	▲%
CERVEZAS	Chile	CLP	8699.00	8.33
BUENAVENTURA-ADR	Peru	USD	8.54	4.02
FOMENTO ECON-UBD	Mexico	MXN	177.34	3.19
GRUPO F BANORT-O	Mexico	MXN	133.28	3.17
GRUPO CARSO-A1	Mexico	MXN	65.82	2.73

Per Turnover	Exchange	Amount (US\$)
GRUPO MEXICO-B	Mexico	70,147,288
AMERICA MOVIL-L	Mexico	59,965,655
GRUPO F BANORT-O	Mexico	57,475,838
WALMART DE MEXIC	Mexico	55,600,165
FOMENTO ECON-UBD	Mexico	25,302,355

Largest losses	Exchange	Currency	Price	▼%
VOLCAN CIA MIN-B	Peru	PEN	0.4	-4.76
PARQUE ARAUCO	Chile	CLP	941.1	-2.98
ITAU CORPBANCA	Chile	CLP	1.9	-2.86
CENCOSUD SA	Chile	CLP	1346	-2.68
INRETAIL PERU CO	Peru	USD	34.35	-2.41

Per Volume	Exchange	Volume
BANCO SANTANDER	Chile	179,114,383
ITAU CORPBANCA	Chile	124,569,388
BANCO DE CHILE	Chile	101,005,444
ENEL CHILE SA	Chile	76,113,512
AMERICA MOVIL-L	Mexico	70,743,763

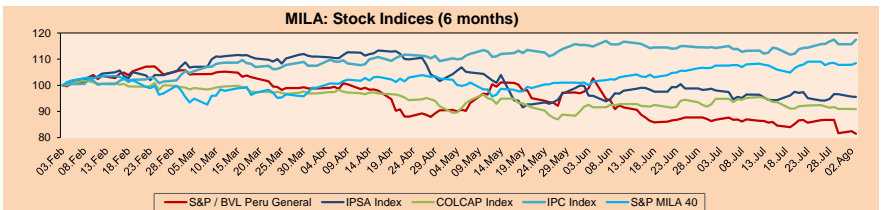
MILA

Peru: The General Index of the BVL ended today's session with a negative result of -1.24%. The index maintains an annual accumulated negative trend of -15.36% in local currency, while the adjusted return in dollars amounts to -24.38%. Then, the S&P / BVL Peru SEL varied by -2.12% while the S&P / BVL LIMA 25 by -1.38%. The PEN spot reached 5 / 4.0498. Headline: Dollar closes down due to the intervention of the BCR with the sale of US \$ 30 million

Chile: The IPSA index ended the day with a negative return of -0.11%. The sectors that benefited the least from the session were Materials (-1.64%) and Finance (-1.58%). The worst performing stocks were Parque Arauco SA (-2.98%) and Itau Corpabanca (-2.86%). Headline: Dollar was at its highest value in nine months: What factors are affecting the exchange rate?

Colombia: The COLCAP index ended the day with a negative return of -0.04%. The sectors that benefited the least from the session were Finance (-2.32%) and Non-Basic Consumer Products (-1.45%). The worst performing stocks were Cementos Argos SA - PREF (-3.71%) and Bolsa de Valores de Colombia (-2.00%). Headline: Dollar in Colombia soars: closed above \$ 3,900

Mexico: The IPC index closed the day with a positive return of +1.50%. The sectors that benefited the most from the session were Finance (+1.90%) and Industrial (+0.24%). The best performing stocks were Bectel SAB de CV (-1.18%) and Regional SAB de CV (-1.12%). Holder: Ramirez de la O, holder of the Treasury: Commission in the Chamber of Deputies endorses appointment

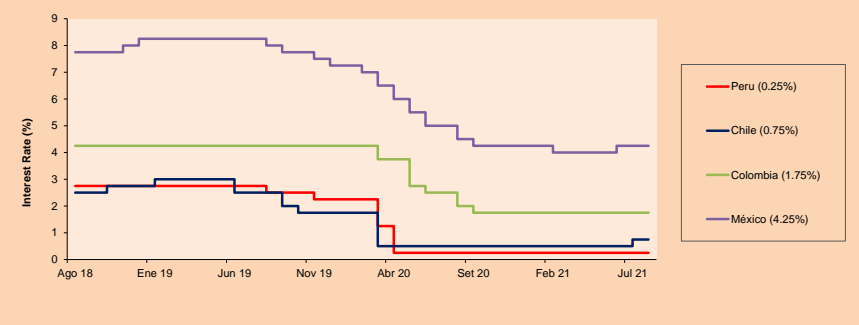


Base: 04/02/21=100
Source: Bloomberg

ETFs

ETFs	Curr.	Close	1D	5D	30 D	YTD	Exchange
▼ iShares MSCI All Peru Caped Index Fund	USD	26.92	-0.37%	-4.57%	-6.72%	-22.38%	NYSE Arca
▼ iShares MSCI All Chile Caped Index Fund	USD	26.55	-0.86%	0.26%	-8.07%	-12.12%	Cboe BZX
▲ Global X MSCI Colombia	USD	9.395	-0.63%	-0.84%	-8.12%	-17.30%	NYSE Arca
▲ iShares MSCI Mexico Capped	USD	49.84	1.96%	1.88%	2.98%	15.93%	NYSE Arca
▲ iShares MSCI Emerging Markets	USD	52.19	0.42%	3.41%	-4.73%	1.01%	NYSE Arca
▲ Vanguard FTSE Emerging Markets	USD	51.65	0.25%	3.57%	-4.28%	3.07%	NYSE Arca
▲ iShares Core MSCI Emergina Markets	USD	63.91	0.44%	3.18%	-4.15%	3.01%	NYSE Arca
▲ iShares JP Morgan Emerging Markets Bonds	USD	62.59	0.81%	2.51%	-1.93%	2.47%	Cboe BZX
▲ Morgan Stanley Emerging Markets Domestic	USD	6.22	0.32%	1.97%	1.97%	-1.11%	New York

MILA: Policy Rate



Source: Bloomberg

Capital Market Laboratory Coordinator: Economist Bruno Bellido
Collaboration: Maria Camarena, Alonso Garcia, Adrian Paredes y Jairo Valverde
email: pulsobursatil@ulima.edu.pe
facebook: www.facebook.com/pulsobursatil

The content of this document is just for informational purposes. The information and opinions expressed should not be considered as recommendations for future decisions. Under any circumstances, the Capital Market Laboratory of University of Lima will be responsible for the use of the statements in this document.

WORLD

Main Indices	Close	1 D*	5 D*	1 M*	YTD*	Market Cap. (US\$ Mill.)
▲ Dow Jones (USA)	35,116.40	0.80%	0.17%	0.95%	14.74%	10,856,717
▲ Standard & Poor's 500 (EEUU)	4,423.15	0.82%	0.49%	1.63%	17.76%	39,084,745
▲ NASDAQ Composite (USA)	14,761.29	0.55%	0.69%	0.83%	14.53%	24,776,149
▲ Stoxx EUROPE 600 (Europe)	465.38	0.20%	1.47%	1.88%	16.63%	10,916,429
▼ DAX (Germany)	15,555.08	-0.09%	0.23%	-0.61%	13.39%	1,173,277
▲ FTSE 100 (United Kingdom)	7,105.72	0.34%	1.57%	-0.25%	9.99%	1,488,164
▲ CAC 40 (France)	6,723.81	0.72%	2.94%	2.61%	21.12%	1,885,674
▲ IBEX 35 (Spain)	8,772.80	0.16%	0.85%	-1.51%	8.66%	497,886
- MSCI AC Asia Pacific Index	200.62	0.00%	2.27%	-2.63%	0.35%	25,701,291
▼ HANG SENG (Hong Kong)	26,194.82	-0.16%	4.42%	-6.35%	-2.63%	3,932,605
▼ SHANGHAI SE Comp. (China)	3,447.99	-0.47%	1.99%	-1.37%	-0.08%	6,764,304
▼ NIKKEI 225 (Japan)	27,641.83	-0.50%	-1.17%	-4.19%	0.49%	3,902,223
▼ S&P/ASX 200 (Australia)	7,474.48	-0.23%	0.58%	2.67%	13.92%	1,768,913
▲ KOSPI (South Korea)	3,237.14	1.50%	1.42%	-0.15%	14.04%	1,914,781

*Legend: Variation 1D: 1 Day; 5D: 5 Days; 1M: 1 Month; YTD: Var. % 12/31/20 to date

Equity

Germany (Stocks from DAX Index)

Largest gains	Curr.	Price	▲%	Exchange	Largest losses	Curr.	Price	▼%	Exchange
FRE GY	EUR	45.195	2.95	Xetra	MTX GY	EUR	206.4	-2.13	Xetra
ADS GY	EUR	322.75	1.59	Xetra	MUV2 GY	EUR	225	-1.49	Xetra
ENR GY	EUR	23.57	1.16	Xetra	DB1 GY	EUR	140.05	-1.06	Xetra
DTE GY	EUR	17.602	1.00	Xetra	DAI GY	EUR	75.75	-0.90	Xetra

Europe (Stocks from STOXX EUROPE 600)

Largest gains	Curr.	Price	▲%	Exchange	Largest losses	Curr.	Price	▼%	Exchange
HSX LN	Gbp	922.4	6.56	Londres	SMIN LN	Gbp	1414.5	-10.02	Londres
GLE FP	EUR	26.45	6.37	EN Paris	ROR LN	Gbp	337.6	-6.95	Londres
BP/ LN	Gbp	306.1	5.64	Londres	PRX NA	EUR	70.62	-6.91	EN Amsterdam
DLG LN	Gbp	315.9	5.48	Londres	TYRES FH	EUR	33.6	-5.86	Helsinki

Global Overview:

United States:

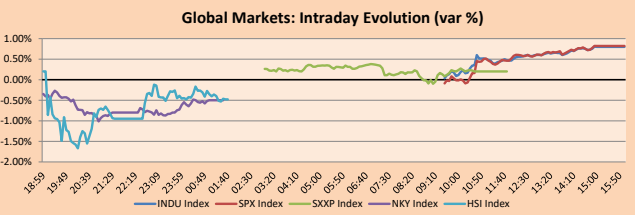
The major U.S. indices ended the session with positive returns on the back of growing optimism over quarterly earnings results. Following a series of better-than-expected results, the S&P 500 and the Dow rose heading into the session, the latter by more than 150 points, trading near an all-time high. The NASDAQ also posted positive returns, but lagged as Big Tech stocks came under pressure. As for the S&P 500, it closed Tuesday at record highs, with ten of the eleven S&P indexes trading higher, highlighted by the recovery of energy stocks on the back of falling oil prices. Among macroeconomic data, Reuters highlights the 1.5% increase in June U.S. factory orders, beating the 1% expected by analysts. The focus this week is on the U.S. service sector data report and the monthly employment report for July. Among the stock market highlights we have Apple +1.26% after falling last week and Translate Bio +29.23% after the purchase agreement by Sanofi for USD\$ 3.2 billion. Thus, DOW JONES +0.80%; S&P 500 +0.82%; NASDAQ +0.55% closed the day with gains.

Europe:

Major European markets mostly finished with positive returns, thanks to strong banking stocks and energy stocks, although gains were mitigated by concerns over increased Delta variant cases and regulations in China. In this way, the pan-European STOXX600 index ended higher, driven by oil and gas stocks, with BP + 5.6% being the most representative, after increasing its dividend and the share buyback thanks to an increase in quarterly earnings. Likewise, according to data from Refinitiv IBES, 66% of more than half of the STOXX600 companies have exceeded analysts' expectations in their results for this second quarter. In the same way, growth for this next quarter is expected to be approximately 140%. Relative to stocks, Societe Generale rose 6.4% after raising its earnings forecast for this year. Similarly, Standard Chartered gained 1.0%, after reporting that it exceeded expectations for its half-year earnings. On the other hand, BMW fell 5.2% as it said a shortage of chips and rising prices of raw materials would affect its performance. Thus, the STOXX 600 + 0.20%, CAC 40 + 0.72%, FTSE 100 + 0.34%, DAX -0.09% closed with mixed returns.

Asia:

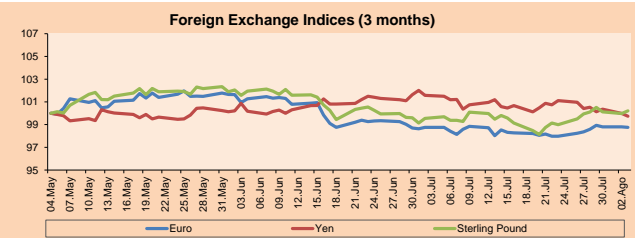
Major Asian mainland indices ended the day mostly lower amid concerns over rising COVID-19 cases in the region. In Hong Kong, stocks closed lower dragged down by the technology sector after Economic Information Daily called online video games "spiritual opium", worrying investors that the sector could be next in the crosshairs of regulators. Thus, Tencent Holdings Ltd -6.1% NetEase Inc -7.7%. Similarly, Japanese index stocks backed their losses on the increase in Covid-19 cases. On the other hand, South Korea's KOSPI ended with gains thanks to technology stocks. Finally, Australia's S&P/ASX 200 index ended with losses after the Australian central bank announced that it would continue to taper its bond-buying program even as the most populous states remain on lock. NIKKEI -0.50%; HANG SENG -0.16%; CSI 300 +0.01%; S&P/ASX 200 -0.23%; SHANGHAI COMPOSITE -0.47%; KOSPI -0.44% closed the day mostly lower.



Source: Bloomberg

Currency	Price	1 D*	5 D*	1 M*	YTD*
▼ Euro	1.1864	-0.05%	0.40%	-0.01%	-2.88%
▼ Yen	109.0400	-0.25%	-0.67%	-1.81%	5.61%
▲ Sterling Pound	1.3916	0.24%	0.27%	0.67%	1.80%
▲ Yuan	6.4703	0.13%	-0.63%	-0.04%	-0.87%
▲ Hong Kong Dollar	7.7784	0.08%	-0.09%	0.16%	0.33%
▲ Brazilian Real	5.1974	0.45%	0.51%	2.72%	-0.02%
▲ Argentine Peso	96.8011	0.02%	0.24%	1.05%	15.04%

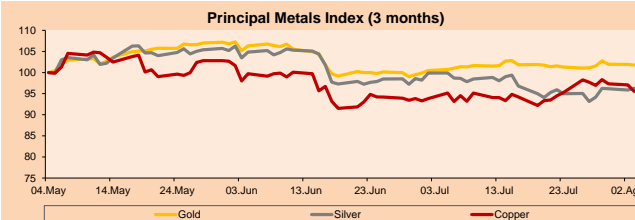
*Legend: Variation 1D: 1 Day; 5D: 5 Days; 1M: 1 Month; YTD: Var. % 12/31/20 to date



Base: 04/05/21=100
Source: Bloomberg

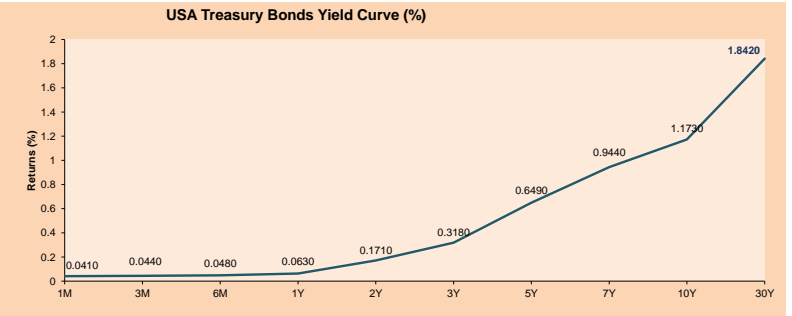
Commodities	Close	1 D*	5 D*	1 M*	YTD*
▼ Oro (US\$ Oz. T) (LME)	1,810.44	-0.17%	0.63%	1.29%	-4.63%
▲ Plata (US\$ Oz. T) (LME)	25.52	0.45%	3.37%	-3.58%	-3.33%
▼ Cobre (US\$ TM) (LME)	9,521.50	-1.58%	-2.24%	1.83%	22.87%
▼ Zinc (US\$ TM) (LME)	2,959.00	-2.73%	-0.35%	1.40%	8.41%
▼ Petróleo WTI (US\$ Barril) (NYM)	70.56	-0.98%	-1.52%	-5.11%	48.42%
▼ Estiáno (US\$ TM) (LME)	36,042.00	0.45%	2.61%	9.83%	75.43%
▼ Plomo (US\$ TM) (LME)	2,438.49	-0.02%	3.10%	5.15%	23.42%
▲ Azúcar #11 (US\$ Libra) (NYB-ICE)	17.98	0.17%	-2.02%	-0.94%	28.00%
▲ Gasca (US\$ TM) (NYB-ICE)	2,426.00	2.67%	1.39%	4.61%	-3.19%
▲ Café Arábica (US\$ TM) (NYB-ICE)	174.85	1.19%	-13.33%	14.24%	31.17%

*Legend: Variación 1D: 1 Día; 5D: 5 Días; 1M: 1 Mes; YTD: Var. % 31/12/20 a la fecha



Base: 04/05/21=100
Source: Bloomberg

ETFs	Curr.	Close	1D	5D	30 D	YTD	Exchange
SPDR S&P 500 ETF TRUST	USD	441.15	0.81%	0.49%	1.71%	17.99%	NYSE Arca
ISHARES MSCI EMERGING MARKET	USD	52.19	0.42%	3.41%	-4.73%	1.01%	NYSE Arca
ISHARES IBOX HIGH YLD CORP	USD	87.44	0.11%	-0.30%	-0.70%	0.16%	NYSE Arca
FINANCIAL SELECT SECTOR SPDR	USD	36.94	1.12%	1.32%	0.00%	25.31%	NYSE Arca
VANECK GOLD MINERS	USD	35.09	0.89%	4.19%	1.95%	-2.58%	NYSE Arca
ISHARES RUSSELL 2000 ETF	USD	220.86	0.41%	1.40%	-3.63%	12.65%	NYSE Arca
SPDR GOLD SHARES	USD	169.49	-0.07%	0.62%	1.32%	-4.97%	NYSE Arca
ISHARES 20+ YEAR TREASURY BO	USD	150.75	0.05%	0.74%	3.94%	-4.43%	NASDAQ GM
INVESCO QQQ TRUST SERIES 1	USD	366.81	0.61%	0.65%	2.28%	16.92%	NASDAQ GM
ISHARES BIOTECHNOLOGY ETF	USD	169.40	2.14%	4.41%	2.83%	11.82%	NASDAQ GM
ENERGY SELECT SECTOR SPDR	USD	49.86	1.71%	1.22%	-8.83%	31.56%	NYSE Arca
PROSHARES ULTRA VIX ST FUTUR	USD	27.91	-7.43%	-5.00%	2.88%	-73.79%	Close BZX
UNITED STATES OIL FUND LP	USD	48.85	-0.67%	-1.25%	-4.08%	47.99%	NYSE Arca
ISHARES MSCI BRAZIL ETF	USD	38.12	0.26%	-1.24%	-5.34%	2.83%	NYSE Arca
SPDR S&P OIL & GAS EXP & PR	USD	82.82	2.06%	0.90%	-14.79%	41.57%	NYSE Arca
UTILITIES SELECT SECTOR SPDR	USD	66.86	0.57%	0.00%	4.44%	6.63%	NYSE Arca
ISHARES US REAL ESTATE ETF	USD	106.69	0.20%	-0.25%	3.91%	24.57%	NYSE Arca
SPDR S&P BIOTECH ETF	USD	124.82	0.72%	1.50%	-8.58%	-11.34%	NYSE Arca
ISHARES CONSUMER INVESTMENT GRA	USD	136.30	0.10%	0.18%	1.44%	-1.32%	NYSE Arca
ISHARES JP MORGAN US EMERGI	USD	112.58	0.04%	0.47%	0.41%	-2.87%	NASDAQ GM
REAL ESTATE SELECT SECT SPDR	USD	46.59	0.41%	-0.13%	4.18%	27.43%	NYSE Arca
ISHARES CHINA LARGE-CAP ETF	USD	40.81	-0.75%	4.21%	-10.29%	-12.10%	NYSE Arca
CONSUMER STAPLES SPDR	USD	71.53	0.45%	-0.20%	2.29%	6.05%	NYSE Arca
VANECK JR GOLD MINERS	USD	45.98	0.81%	4.48%	-3.12%	-15.23%	NYSE Arca
SPDR BARRICK HIGH YIELD BND	USD	109.20	0.03%	-0.39%	-0.69%	0.24%	NYSE Arca
VANGUARD REAL ESTATE ETF	USD	106.19	0.12%	-0.29%	3.55%	25.03%	NYSE Arca
GRAYSCALE BITCOIN TRUST BTC	USD	31.87	-5.01%	-3.42%	11.51%	-0.41%	OTC US



Source: Bloomberg

Capital Market Laboratory Coordinator: Economist Bruno Bellido
Collaboration: María Camarena, Alonso García, Adrian Paredes y Jairo Valverde
email: pulsoBursatil@ulima.edu.pe
facebook: www.facebook.com/pulsoBursatil

LIMA

Stocks

Ticker	Currency	Price	1D*	5D*	30D*	YTD*	Frequency	Volume (US\$)	Beta	Dividend Yield (%)	Price Earning	Market Cap. (M US\$)	Economic Sector*	Index Weight
▼ ALICORC1 PE**	S/.	5.37	-1.35%	-1.85%	-4.88%	-12.94%	100.00%	707,644	1.04	4.66	11.05	1,130.90	Industrial	3.53%
ATACOCB1 PE**	S/.	0.09	0.00%	0.00%	-9.00%	-34.06%	38.89%	1,322	1.17	0.00	-	21.23	Mining	1.02%
- BACKUS11 PE**	S/.	18.00	0.00%	-5.26%	0.00%	-10.67%	66.67%	6,564	0.75	0.00	8.69	6,050.79	Industrial	0.82%
▼ BAP PE**	US\$	101.47	-2.29%	-16.14%	-16.25%	-36.82%	100.00%	248,277	1.26	0.00	-	9,576.97	Diverse	5.82%
▲ BVN PE**	US\$	8.54	4.02%	-1.84%	-4.37%	-28.83%	94.44%	5,124	1.05	0.00	-	2,349.88	Mining	5.88%
- CASAGRC1 PE**	S/.	3.61	0.00%	-2.17%	-9.98%	-24.00%	66.67%	28,676	1.31	0.00	3.29	75.09	Agricultural	1.31%
▼ BVVAC1 PE**	S/.	1.73	-3.35%	-11.28%	-5.46%	-17.46%	100.00%	984,899	1.13	2.52	17.63	2,887.09	Finance	2.85%
- CORARE11 PE**	S/.	1.00	0.00%	-4.76%	-9.09%	12.36%	100.00%	14,064	1.33	23.88	1.98	319.48	Industrial	1.72%
- CPACASC1 PE**	S/.	4.91	0.00%	-2.77%	-2.77%	-7.36%	94.44%	2,504	0.68	16.09	35.07	562.14	Industrial	2.38%
- CVERDEC1 PE**	US\$	14.85	0.00%	-4.26%	-9.84%	-29.02%	100.00%	51,771	1.42	3.85	6.64	5,198.33	Mining	5.25%
▼ ENGEPEC1 PE**	S/.	2.03	-3.33%	-0.98%	-3.33%	1.50%	72.22%	719,307	0.68	9.73	10.58	1,422.95	Public Services	1.44%
- ENDISPC1**	S/.	3.75	0.00%	-3.85%	-2.60%	-30.56%	88.89%	1,879	0.78	4.55	8.25	591.29	Public Services	0.98%
▼ FERREYC1 PE**	S/.	1.50	-1.96%	-15.25%	-2.60%	-13.79%	100.00%	102,494	1.13	12.14	4.68	361.38	Diverse	4.90%
- AENZAC1 PE**	S/.	1.45	0.00%	2.11%	6.62%	-16.67%	72.22%	122,362	0.75	0.00	-	312.18	Diverse	4.05%
▼ IFS PE**	US\$	19.94	-7.26%	-14.09%	-18.58%	-35.55%	100.00%	22,395	1.31	3.86	12.14	2,302.03	Diverse	7.22%
▼ INRETC1 PE**	US\$	34.35	-2.41%	-5.63%	-1.86%	-12.37%	100.00%	278,696	0.80	1.98	76.02	3,531.43	Diverse	5.28%
- LUSURC1 PE**	S/.	10.50	0.00%	-5.83%	-7.08%	-58.82%	72.22%	972	0.74	0.00	11.38	1,262.53	Public Services	1.81%
▲ MINSUR11 PE**	S/.	2.14	1.90%	-6.96%	-15.08%	15.68%	94.44%	280,256	0.96	15.61	4.03	1,523.44	Mining	3.09%
- PML PE**	US\$	0.09	0.00%	0.00%	-10.00%	-15.09%	38.89%	7,020	1.42	0.00	-	23.79	Mining	2.12%
▲ RELAPAC1 PE**	S/.	0.14	4.38%	-1.38%	-4.67%	107.25%	88.89%	1,190	1.13	0.00	2.60	293.75	Industrial	2.12%
- SCCO PE**	US\$	64.85	0.00%	0.46%	1.00%	-1.59%	61.11%	263	0.89	0.00	17.12	50,134.32	Mining	2.14%
- SIDERC1 PE**	S/.	1.00	0.00%	-0.99%	-0.99%	17.65%	83.33%	1,235	0.94	22.45	5.00	219.25	Industrial	1.43%
- TV PE**	US\$	0.18	0.00%	6.71%	-1.69%	19.05%	72.22%	3,045	1.19	0.00	-	173.09	Mining	2.93%
▼ UNACEMC1 PE**	S/.	1.15	-1.71%	-14.18%	-12.88%	-25.81%	100.00%	120,753	1.15	4.00	9.08	516.28	Industrial	3.00%
▼ VOLCABC1 PE**	S/.	0.40	-4.76%	-9.91%	-18.37%	-23.08%	100.00%	65,060	1.51	0.00	-	402.64	Mining	5.90%
▼ NEXAPEC1 PE**	S/.	2.55	-2.30%	-2.30%	-16.12%	-9.89%	38.89%	1,259	1.10	0.00	7.06	831.57	Mining	1.56%

Quantity of shares: 26
Source: Bloomberg, Económática
* Bloomberg Industry Classification System
** PER is used in the stock market and original currency of the instrument
*Legend: Variation 1D: 1 Day; 5D: 5 Days, 1M: 1 Month; YTD: Var.% 12/31/20 to date

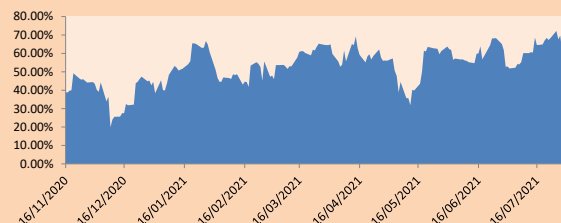
Sectorial Indices

	Close	1D*	5D*	30D*	YTD*	Beta
▲ S&P/BVLMining	392.73	0.40%	2.07%	0.99%	0.71%	0.83
▼ S&P/BVLConsumer	985.68	-2.21%	-6.55%	-2.99%	-9.46%	0.78
▼ S&P/BVLIndustrials	177.34	-0.82%	-7.95%	-3.48%	-6.94%	0.89
▼ S&P/BVLFinancials	741.86	-3.12%	-13.03%	-12.89%	-28.25%	1.23
▼ S&P/BVLConstruction	193.67	-0.49%	-4.90%	-3.78%	-7.39%	0.78
▼ S&P/BVLPublicSvcs	511.16	-1.17%	-1.77%	-3.04%	-16.76%	0.39
▼ S&P/BVLElectricUtil	499.02	-1.17%	-1.77%	-3.04%	-16.76%	0.39

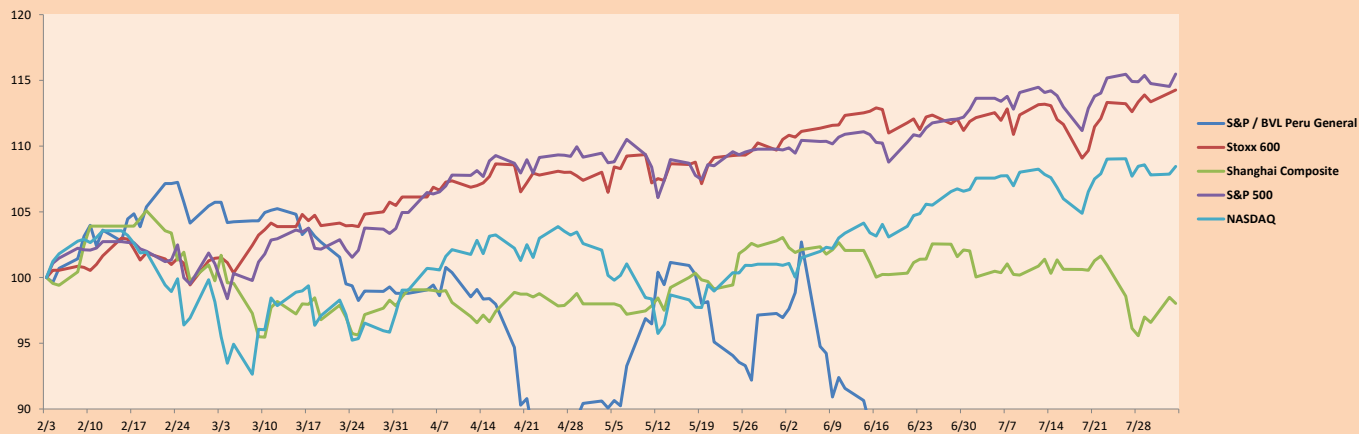
S&P/BVLConstructionTRPEN

*Legend: Variation 1D: 1 Day; 5D: 5 Days, 1M: 1 Month; YTD: Var.% 12/31/20 to date

Correlation Graph of Returns of Mining Index against Metallic Index of London (3 months)



Indices (6 months)



Base: 03/02/21=100
Source: Bloomberg

Capital Market Laboratory Coordinator: Economist Bruno Bellido
Collaboration: María Camarena, Alonso García, Adrian Paredes y Jairo Valverde
email: pulsobursatil@ulima.edu.pe
facebook: www.facebook.com/pulsobursatil.ul

SOVEREIGN RATING

RISK RATINGS

Moody's	S&P	Fitch	
Aaa	AAA	AAA	Prime
Aa1	AA+	AA+	High credit quality
Aa2	AA	AA	
Aa3	AA-	AA-	
A1	A+	A+	Medium-high grade, with low credit risk
A2	A	A	
A3	A-	A-	
Baa1	BBB+	BBB+	Moderate Credit Risk
Baa2	BBB	BBB	
Baa3	BBB-	BBB-	
Ba1	BB+	BB+	It has speculative elements and it is subject to substantial credit risk
Ba2	BB	BB	
Ba3	BB-	BB-	
B1	B+	B+	It is considered speculative and it has high credit risk
B2	B	B	
B3	B-	B-	
Caa1	CCC+		Bad credit conditions and it is subject to high credit risk
Caa2	CCC		
Caa3	CCC-	CCC	
Ca	C		Very close to default or in default
		DDD	
C	D	DD D	

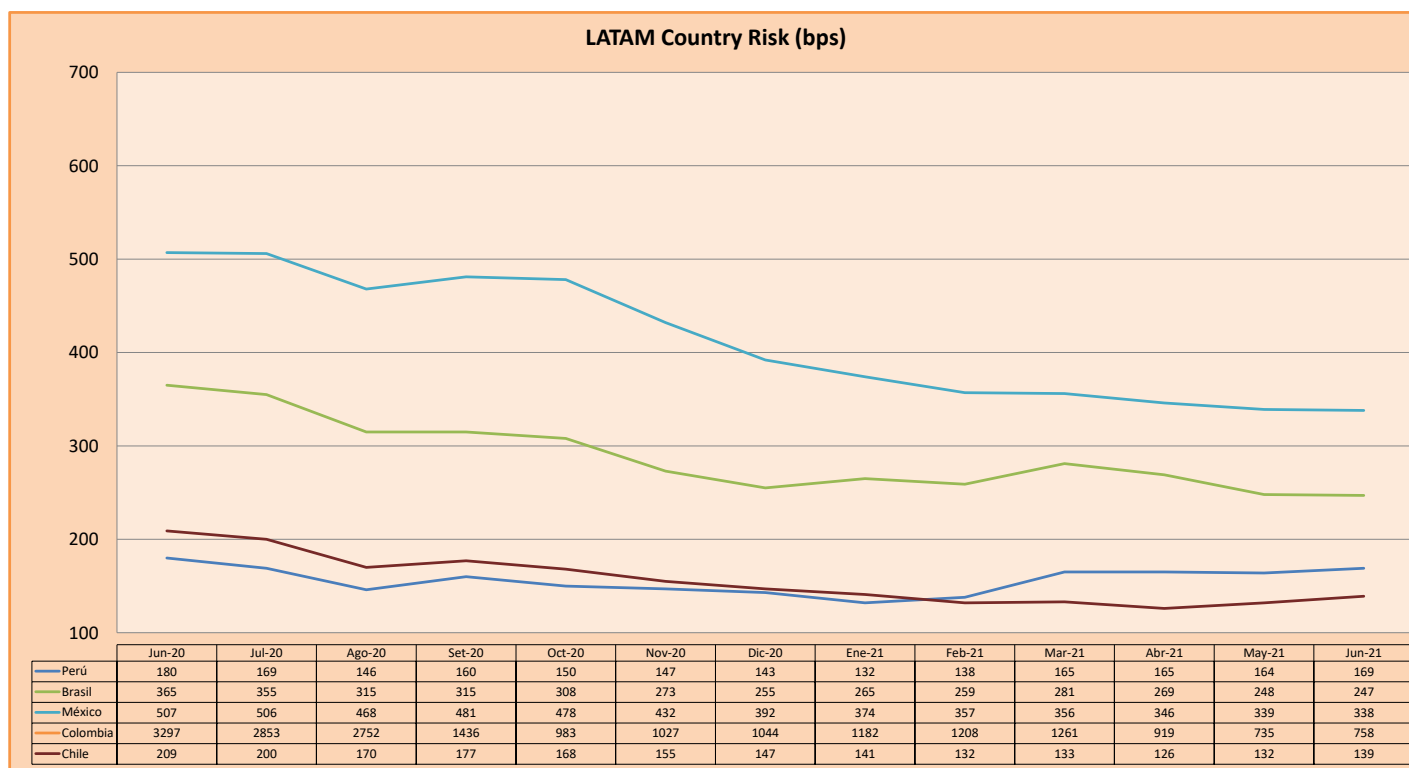
Source: Bloomberg

Latin America Credit Rating

Clasificadora de riesgo

Country	Moody's	Fitch	S&P
Peru	A3	BBB+	BBB+
México	Ba2	BB-	BB-
Venezuela	C	WD	SD
Brazil	Ba2	BB-	BB-
Colombia	Baa2	BB+	BB+
Chile	A1	A-	A
Argentine	Ca	WD	CCC+
Panama	Baa2	BBB-	BBB

Source: Bloomberg



Source: BCRP

Capital Market Laboratory Coordinator: Economist Bruno Bellido
Collaboration: Maria Camarena, Alonso García, Adrian Paredes y Jairo Valverde
email: pulsobursatil@ulima.edu.pe
facebook: www.facebook.com/pulsobursatil.ul