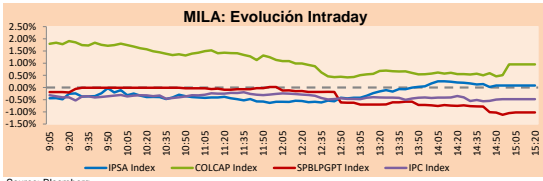


MILA

Lima, August 12, 2021

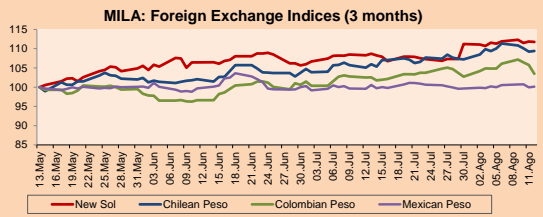
Main Indexes	Close	1 D	5 D	1 M	YTD	Cap. Burs. (US\$ bill)
▲ IPSA (Chile)	4,374.75	0.15%	3.16%	4.19%	4.73%	112.43
▲ IGPA (Chile)	21,811.37	0.18%	2.98%	3.46%	3.83%	133.44
▲ COLSC (Colombia)	937.46	0.13%	1.83%	-1.11%	-11.48%	4.46
▲ COLCAP (Colombia)	1,258.53	0.95%	2.54%	-2.72%	-12.47%	73.68
▼ S&P/BVL (Perú)*	16,829.31	-1.02%	-2.90%	-9.93%	-19.18%	86.10
▼ S&P/BVL SEL (Perú)	443.87	-0.58%	-3.95%	-10.54%	-19.50%	78.09
▼ S&P/BVL LIMA 25	21,813.13	-0.47%	-3.98%	-10.17%	-13.44%	85.39
▼ IPC (México)	51,049.69	-0.51%	-0.17%	3.60%	15.85%	313.85
▲ S&P MILA 40	458.59	0.61%	3.11%	-2.65%	-14.22%	6,266.19

*Legend: Variation 1D: 1 day; 5D: 5 days; 1M: 1 Month; YTD: Var% 12/31/20 to date



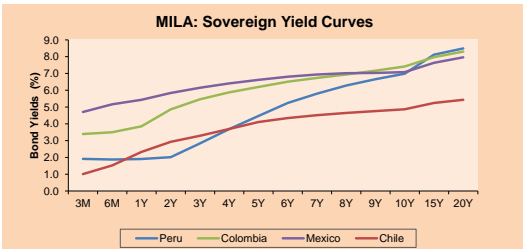
Currency	Price	1D*	5D*	30 D*	YTD*
▼ Sol (PEN)	4,088.00	-0.12%	0.36%	3.00%	12.99%
▲ Chilean Peso (CLP)	774.38	0.15%	-0.61%	3.22%	8.79%
▼ Colombian Peso (COP)	3,858.58	-2.17%	-1.32%	0.89%	12.50%
▲ Mexican Peso (MXN)	19.97	0.19%	0.16%	-0.42%	0.26%

*Legend: Variation 1D: 1 day; 5D: 5 days; 1M: 1 Month; YTD: Var% 12/31/20 to date



Base: 13/05/21-100
Source: Bloomberg

Fixed Income	Currency	Price	Bid Yield (%)	Ask Yield (%)	Duration
PERU 7.35 07/21/25	USD	121.927	1.62	1.53	3.51
PERU 4.125 08/25/27	USD	111.449	2.14	2.05	5.34
PERU 8.75 11/21/33	USD	155.286	3.28	3.22	8.57
PERU 6.55 03/14/37	USD	136.398	3.52	3.47	10.17
PERU 5.625 11/18/2050	USD	136.079	3.64	3.59	16.49
CHILE 2.25 10/30/22	USD	102.229	0.59	0.20	1.19
CHILE 3.125 01/21/26	USD	107.873	1.35	1.23	4.18
CHILE 3.625 10/30/42	USD	107.376	3.17	3.12	15.25
COLOM 11.85 03/09/28	USD	156.782	2.60	2.28	4.95
COLOM 10.375 01/28/33	USD	148.339	4.93	4.73	7.67
COLOM 7.375 09/18/37	USD	128.207	4.87	4.80	10.12
COLOM 6.125 01/18/41	USD	115.968	4.88	4.82	12.08
MEX 4 10/02/23	USD	115.968	4.875	4.818	12.08
MEX5.55 01/45	USD	121.585	4.13	4.08	14.27



Source: Bloomberg

Equity	Exchange	Currency	Price	▲ %
Largest gains				
AVEVA GROUP PLC	Peru	Gbp	83.18	8.00
ALICORP-C	Peru	PEN	5.06	5.42
AVEVA GROUP PLC	Peru	Gbp	30,000.00	3.23
AVEVA GROUP PLC	Peru	Gbp	2.00	2.57
AVEVA GROUP PLC	Peru	Gbp	29,300.00	2.45
Per Turnover	Exchange	Amount (US\$)		
ARCA CONTINENTAL	Mexico	3,416,128		
FERREYCORP SAA	Peru	405,107		
ALICORP-C	Peru	371,821		
SOUTHERN COPPER	Peru	133,407		
VOLCAN CIA MIN-B	Peru	59,802		

Largest losses	Exchange	Currency	Price	▼ %
AVEVA GROUP PLC	Peru	Gbp	92.50	-3.21
AVEVA GROUP PLC	Peru	Gbp	50.39	-2.89
AVEVA GROUP PLC	Peru	Gbp	7,905.00	-2.72
AVEVA GROUP PLC	Peru	Gbp	14.19	-2.67
AVEVA GROUP PLC	Peru	Gbp	270.60	-2.40
Per Volume	Exchange	Volume		
ITAU CORPBANCA	Chile	1,100,349,532		
BANCO SANTANDER	Chile	408,331,919		
BANCO DE CHILE	Chile	239,838,412		
ENEL CHILE SA	Chile	145,973,668		
ENEL AMERICAS SA	Chile	125,699,986		

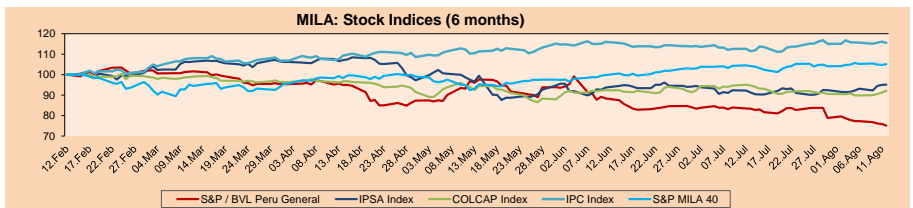
MILA

Peru: The BVL General Index ended today's session with a negative result of -1.02%. The index maintains a negative annual cumulative trend of -19.18% in local currency, while the dollar-adjusted performance declined to -28.47%. Then, the S&P / BVL Peru SEL varied by -0.58% while the S&P / BVL LIMA 25 by -0.47%. The spot PEN reached 5 / 4,088.00. Headline: BCR raises interest rate to 0.50% to curb inflation expectations.

Chile: The IPSA index ended the day with a positive return of +0.15%. The sectors that benefited the most during the day were Industrials (+2.31%) and Non-Basic Consumer Products (+1.77%). The best performing stocks of the day were SMU SA (+8.00%) and Corpbanca (+2.57%). Headline: Encosud recovers second quarter profits with 23% increase in global sales.

Colombia: The COLCAP index closed today with a positive return of +0.95%. The sectors that benefited the most during the day were Financials (+1.91%) and Materials (+1.04%). The best performing stocks were Corporación Financiera Colombia (+4.05%) and Banco Davivienda SA (+3.23%). Headline: Losses hit second-tier oil companies; drop in results coincided with low production.

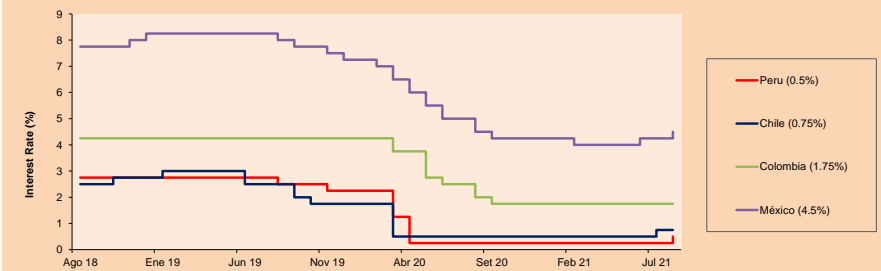
Mexico: The IPC index closed the day with a negative return of -0.51%. The sectors that lost the most during the day were Materials (-2.25%) and Health Care (-1.63%). The worst performing stocks were Grupo Mexico SAB de CV (-3.21%) and Grupo Televisa SA (-2.89%). Headline: Pemex 'snatched' oil field from IP but has no money to develop it.



Base: 15/02/21-100
Source: Bloomberg

ETFs	Curr.	Close	1D	5D	30 D	YTD	Exchange
▲ iShares MSCI All Peru Caped Index Fund	USD	26.55	0.84%	0.61%	-7.78%	-23.44%	NYSE Arca
▲ iShares MSCI All Chile Caped Index Fund	USD	27.74	0.25%	4.09%	1.13%	-8.18%	Cboe BZX
▲ Global X MSCI Colombia	USD	9.57	0.63%	2.13%	-4.44%	-15.76%	NYSE Arca
▲ iShares MSCI Mexico Capped	USD	49.08	-0.47%	-0.22%	4.51%	14.17%	NYSE Arca
▼ iShares MSCI Emerging Markets	USD	51.86	-0.88%	-0.99%	-3.34%	0.37%	NYSE Arca
▼ Vanguard FTSE Emerging Markets	USD	51.49	-0.66%	-0.25%	-2.92%	2.75%	NYSE Arca
▼ iShares Core MSCI Emerging Markets	USD	63.39	-0.80%	-1.06%	-3.10%	2.18%	NYSE Arca
▼ iShares JP Moran Emerging Markets Bonds	USD	62.49	-0.53%	-0.27%	-0.97%	2.31%	Cboe BZX
▼ Morgan Stanley Emerging Markets Domestic	USD	6.1	-0.33%	-1.29%	0.66%	-3.02%	New York

MILA: Policy Rate



Source: Bloomberg

Capital Market Laboratory Coordinator: Economist Bruno Bellido
Collaboration: María Camarena, Alonso García, Adrian Paredes y Jairo Valverde
email: pulsobursatil@ulima.edu.pe
facebook: www.facebook.com/pulsobursatil.ul

WORLD

Main Indices	Close	1 D*	5 D*	1 M*	YTD*	Market Cap. (US\$ Mill.)
▲ Dow Jones (USA)	35,499.85	0.04%	1.24%	1.75%	15.99%	10,947,563
▲ Standard & Poor's 500 (EUEU)	4,460.83	0.30%	0.72%	2.10%	18.76%	39,401,995
▲ NASDAQ Composite (USA)	14,816.26	0.35%	-0.53%	0.94%	14.96%	24,891,423
▲ Stoxx EURO600 (Europe)	474.84	0.11%	1.04%	3.01%	19.00%	11,243,871
▲ DAX (Germany)	15,937.51	0.70%	1.22%	0.94%	16.17%	15,124,855
▼ FTSE 100 (United Kingdom)	7,193.23	-0.37%	1.02%	0.96%	11.34%	1,516,449
▲ CAC 40 (France)	6,882.47	0.36%	1.40%	4.94%	23.98%	1,951,441
▲ IBEX 35 (Spain)	8,979.40	0.04%	1.62%	3.27%	11.22%	515,516
▲ MSCI AC Asia Pacific Index	200.38	-0.37%	-0.27%	-2.75%	0.23%	25,760,462
▼ HANG SENG (Hong Kong)	26,517.82	-0.53%	1.19%	-5.88%	-3.35%	3,998,802
▼ SHANGHAI SE Comp. (China)	3,524.74	-0.22%	1.68%	-1.42%	2.11%	6,926,585
▲ NIKKEI 225 (Japan)	28,015.02	-0.20%	1.56%	-2.42%	2.11%	3,913,137
▲ S&P/ASX 200 (Australia)	7,588.19	0.05%	1.03%	3.98%	15.74%	1,779,677
▼ KOSPI (South Korea)	3,208.38	-0.51%	-0.17%	-3.32%	10.07%	1,908,070

*Legend: Variation 1D: 1 Day; 5D: 5 Days; 1M: 1 Month; YTD: Var. % 12/31/20 to date

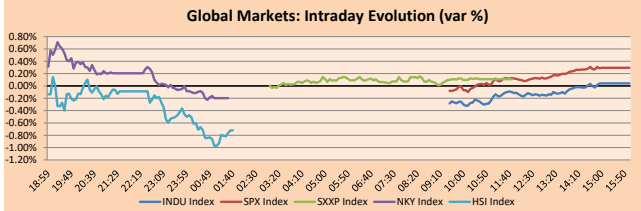
Equity

Germany (Stocks from DAX Index)

Largest gains	Curr.	Price	▲%	Exchange	Largest losses	Curr.	Price	▼%	Exchange
ENR GY	EUR	23.6	0.30	Xetra	DHER GY	EUR	116.4	-7.58	Xetra
IFX GY	EUR	34.83	-0.21	Xetra	BAYN GY	EUR	47.965	1.42	Xetra
SIE GY	EUR	142.6	0.66	Xetra	EOAN GY	EUR	10.73	0.41	Xetra
VOW3 GY	EUR	208.6	1.63	Xetra	BAS GY	EUR	68.75	1.09	Xetra

Europe (Stocks from STOXX EUROPE 600)

Largest gains	Curr.	Price	▲%	Exchange	Largest losses	Curr.	Price	▼%	Exchange
RMV LN	Gbp	702.6	-0.17	London	NETC DC	DKK	771	-1.34	Copenhagen
ELI BB	EUR	104.2	0.10	EN Brussels	ENTRA NO	NOK	225.6	0.45	Oslo
AM FP	EUR	998	-1.19	EN Paris	INDUA SS	SEK	337.2	-1.00	Stockholm
TRELB SS	SEK	217.9	0.83	Stockholm	RYA ID	EUR	16.26	-1.51	EN Dublin



Global Overview:

United States:

The main American indices ended the day with positive results thanks to the run of good macroeconomic statistics for the country and good results for the second quarter of the year from the leading companies. THE DOW JONES +0.04 closed with a slightly positive result thanks to gains in the Information Technology sectors + 0.83% and Communication Services + 0.54%, although these were almost offset by losses in the Industrial sector -0.57%. Meanwhile, the S&P 500 + 0.30% closed with gains driven by the Healthcare + 0.77% and Information Technology + 0.59% sectors, while the NASDAQ + 0.35% closed with gains driven by the growth of the most important stocks like Apple + 2.08%, Facebook + 0.75%, Google + 0.67% and Amazon + 0.35%; in turn, the wave of good results has generated gains in technology stocks across the broader American market. Finally, the energy sector has been severely affected as the White House is pressuring OPEC to increase oil production in order to maintain a stock more in line with the market recovery. Thus, DOW JONES + 0.04%; S&P 500 + 0.30% and NASDAQ + 0.35%.

Europe:

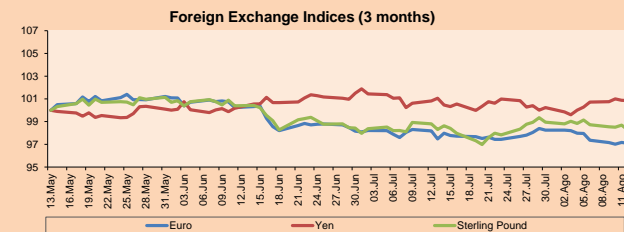
The main indexes of the European continent ended the session higher, as strong earnings from insurers and certain mergers and acquisitions in the UK outpaced the falls in mining stocks. In this way, the pan-European STOXX 600 index closed higher reaching its ninth session ending with positive results, thanks to corporate momentum and optimism related to the speed of vaccination throughout Europe, reinforcing confidence in investors. On the other hand, the FTSE 100 of Great Britain ended up falling, despite the increase in its economic data to the restart of services of many hospitality companies and the increase in the health sector. On the other hand, the survey on economic sentiment in Germany did not exceed expectations falling to 40.3, according to Reuters a result of 56.7 was expected. Lastly, relative to shares, Adidas rose 1.6% after selling Reebok to Authentic Brands Groups for \$ 2.5 billion. Likewise, the insurers Aviva + 3.5%, Aegon NV + 7.3%, Zurich Insurance Group + 3.8% and Deutsche Telekom + 2.8% finished higher, due to the successful corporate results in this second quarter. Thus, FTSE 100 -0.37%; CAC 40 + 0.36%; DAX + 0.70%; STOXX 600 + 0.11%; IBEX 35 + 0.04% ended the day higher.

Asia:

Major Asian indices closed with negative returns following an increase in COVID-19 cases on the mainland. In China and Hong Kong, stocks fell as weak credit data raises liquidity fears. China's new bank lending fell to 1.08 trillion yuan (\$166.5 billion) in July, its lowest level in nine months. Similarly, total social financing growth slowed to 10.7% last month, its weakest reading since February 2020. Analysts expect the resulting slowdown for the Chinese economy to continue in the coming months, according to Capital Economics. Elsewhere, stocks in Japan fell as chip stocks were hit by concerns that their best days may be over as supplies return. Worsening coronavirus cases again hit stocks in travel-related sectors. In South Korea, stocks fell for a sixth straight session after foreign investors dumped chip heavy stocks such as Samsung Electronics and SK Hynix. Thus, NIKKEI -0.20%; HANG SENG -0.53%; CSI 300 -0.84%; Shanghai Composite -0.22%; KOSPI -0.38% and S&P/ASX 200 +0.05%, ended with negative returns.

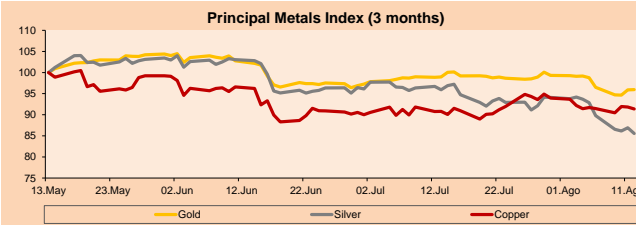
Currency	Price	1 D*	5 D*	1 M*	YTD*
▼ Euro	1,1730	-0.08%	-0.88%	-0.39%	-3.98%
▼ Yen	110,4100	-0.02%	0.59%	-0.20%	6.93%
▼ Sterling Pound	1,3908	-0.43%	-0.98%	-0.04%	1.01%
- Yuan	6,4795	0.00%	0.28%	0.17%	-0.73%
▲ Hong Kong Dollar	7,7814	0.03%	0.06%	0.20%	0.37%
▲ Brazilian Real	5,2534	0.59%	0.08%	1.74%	1.06%
▲ Argentine Peso	97,0771	0.03%	0.19%	0.93%	15.37%

*Legend: Variation 1D: 1 Day; 5D: 5 Days; 1M: 1 Month; YTD: Var. % 12/31/20 to date

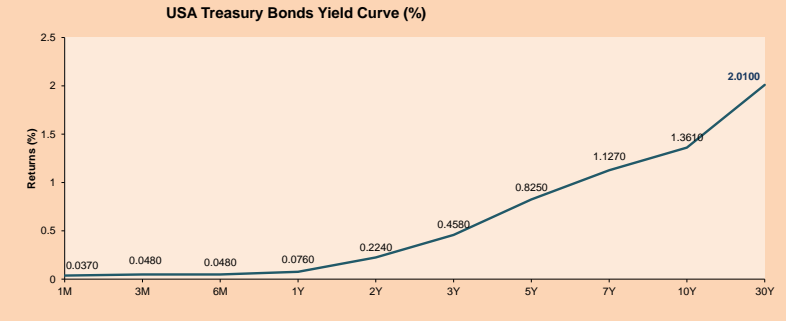


Commodities	Close	1 D*	5 D*	1 M*	YTD*
▲ Oro (US\$ Oz. T) (LME)	1,752.90	0.07%	-2.85%	-3.03%	-7.66%
▲ Plata (US\$ Oz. T) (LME)	23.18	-1.55%	-7.86%	-10.80%	-12.20%
▼ Cobre (US\$ TM) (LME)	9,435.75	-0.49%	-0.38%	0.65%	21.77%
▼ Zinc (US\$ TM) (LME)	2,981.15	-1.78%	-1.27%	2.06%	9.23%
▼ Petróleo WTI (US\$ Barril) (NYM)	69.09	-0.23%	0.00%	-7.50%	43.37%
▼ Estiáno (US\$ TM) (LME)	35,885.00	-1.24%	-0.01%	7.39%	74.67%
▼ Plomo (US\$ TM) (LME)	2,355.00	-0.71%	-1.94%	2.01%	19.20%
▲ Azúcar #11 (US\$ Libra) (NYB-ICE)	19.54	0.36%	4.94%	14.40%	39.17%
▲ Gasca (US\$ TM) (NYB-ICE)	2,582.00	0.08%	5.09%	5.80%	3.20%
▲ Café Arábica (US\$ TM) (NYB-ICE)	189.60	1.39%	5.39%	22.24%	40.65%

*Legend: Variación 1D: 1 Día; 5D: 5 Días; 1M: 1 Mes; YTD: Var. % 31/12/20 a la fecha



ETFs	Curr.	Close	1D	5D	30 D	YTD	Exchange
SPDR S&P 500 ETF TRUST	USD	445.11	0.30%	0.76%	2.19%	19.05%	NYSE Arca
ISHARES MSCI EMERGING MARKET	USD	51.86	-0.88%	-0.99%	-3.34%	0.37%	NYSE Arca
ISHARES IBOXX HIGH YLD CORP	USD	87.27	0.17%	-0.24%	-0.50%	-0.03%	NYSE Arca
FINANCIAL SELECT SECTOR SPDR	USD	38.87	0.18%	4.74%	6.00%	31.85%	NYSE Arca
VANECK GOLD MINERS	USD	32.16	-1.53%	-6.13%	-6.18%	-10.72%	NYSE Arca
ISHARES RUSSELL 2000 ETF	USD	223.16	-0.24%	0.51%	0.39%	13.82%	NYSE Arca
SPDR GOLD SHARES	USD	164.04	0.02%	-2.85%	-3.06%	-8.03%	NYSE Arca
ISHARES 20+ YEAR TREASURY BO	USD	146.24	-0.16%	-2.69%	0.70%	-7.28%	NASDAQ GM
INVESCO QQQ TRUST SERIES 1	USD	367.53	0.36%	-0.58%	1.41%	17.14%	NASDAQ GM
ISHARES BIOTECHNOLOGY ETF	USD	169.24	0.83%	-3.21%	5.16%	11.72%	NASDAQ GM
ENERGY SELECT SECTOR SPDR	USD	50.01	-0.10%	1.94%	-4.51%	31.95%	NYSE Arca
PROSHARES ULTRA VIX ST FUTUR	USD	22.95	-3.33%	-14.43%	-18.12%	-78.45%	Cboe BZX
UNITED STATES OIL FUND LP	USD	48.10	-0.41%	0.00%	-5.96%	46.71%	NYSE Arca
ISHARES MSCI BRAZIL ETF	USD	36.84	-1.81%	-1.23%	-6.57%	-0.62%	NYSE Arca
SPDR S&P OIL & GAS EXP & PR	USD	83.05	-0.30%	2.25%	-9.76%	41.97%	NYSE Arca
UTILITIES SELECT SECTOR SPDR	USD	68.20	0.10%	1.05%	6.03%	8.77%	NYSE Arca
ISHARES US REAL ESTATE ETF	USD	106.44	0.39%	-0.84%	1.72%	24.27%	NYSE Arca
SPDR S&P BIOTECH ETF	USD	126.79	0.90%	-2.12%	-2.19%	-9.94%	NYSE Arca
ISHARES IBOXX INVESTMENT GRA	USD	134.18	0.14%	-1.17%	-0.05%	-2.86%	NYSE Arca
ISHARES JP MORGAN US EMERGI	USD	111.79	0.13%	-0.68%	-0.03%	-3.55%	NASDAQ GM
REAL ESTATE SELECT SECT SPDR	USD	46.43	0.35%	-0.81%	1.58%	27.00%	NYSE Arca
ISHARES CHINA LARGE-CAP ETF	USD	41.33	-1.52%	1.05%	-7.12%	-10.98%	NYSE Arca
CONSUMER STAPLES SPDR	USD	71.91	-0.06%	1.37%	2.70%	6.61%	NYSE Arca
VANECK JR GOLD MINERS	USD	41.85	-1.94%	-6.52%	-8.84%	-22.94%	NYSE Arca
SPDR BBIG BARO HIGH YIELD BND	USD	108.97	0.13%	-0.19%	-0.62%	0.03%	NYSE Arca
VANGUARD REAL ESTATE ETF	USD	106.18	0.22%	-0.86%	1.63%	25.02%	NYSE Arca
GRAYSCALE BITCOIN TRUST BTC	USD	36.87	-5.15%	9.34%	39.68%	15.22%	OTC US



Source: Bloomberg

Capital Market Laboratory Coordinator: Economist Bruno Bellido
Collaboration: María Camarena, Alonso García, Adrian Paredes y Jairo Valverde
email: pulsobursatil@ulima.edu.pe
facebook: www.facebook.com/pulsobursatil

LIMA

Stocks

Ticker	Currency	Price	1D*	5D*	30D*	YTD*	Frequency	Volume (US\$)	Beta	Dividend Yield (%)	Price Earning	Market Cap. (M US\$)	Economic Sector*	Index Weight
▲ ALICORC1 PE**	S/.	5.06	0.13%	1.83%	-1.11%	-11.48%	100.00%	371,821	1.05	4.94	10.41	1,055.86	Industrial	3.53%
▲ ATACOCB1 PE**	S/.	0.09	0.00%	-2.20%	-8.25%	-35.51%	44.44%	5,660	1.17	0.00	-	20.57	Mining	1.02%
- BACKUS1 PE**	S/.	16.62	0.00%	0.00%	-12.48%	-17.52%	72.22%	7,546	0.76	7.74	8.02	5,624.66	Industrial	0.82%
▼ BAP PE**	US\$	103.10	-1.67%	1.62%	-13.75%	-35.80%	100.00%	25,778	1.23	0.00	-	9,730.82	Diverse	5.82%
▼ BVN PE**	US\$	7.10	-1.53%	-8.86%	-15.07%	-40.83%	94.44%	9,979	1.08	0.00	-	1,953.65	Mining	5.88%
- CASAGRC1 PE**	S/.	3.94	0.00%	11.30%	-7.08%	-17.05%	72.22%	20,300	1.31	0.00	3.59	81.18	Agricultural	1.31%
▼ BVVAC1 PE**	S/.	1.58	-1.25%	-3.66%	-12.71%	-24.62%	100.00%	32,131	1.14	2.76	16.10	2,612.13	Finance	2.85%
- CORARE1 PE**	S/.	0.96	0.00%	-1.03%	0.00%	7.87%	94.44%	5,335	1.32	24.88	1.90	314.71	Industrial	1.72%
- CPACASC1 PE**	S/.	4.60	0.00%	-4.17%	-6.31%	-13.21%	88.89%	1,125	0.67	0.00	32.86	524.74	Industrial	2.38%
- CVERDEC1 PE**	US\$	14.00	0.00%	-6.67%	-11.95%	-33.08%	100.00%	11,881	1.41	4.08	6.26	4,900.78	Mining	5.25%
▼ ENGEPEC1 PE**	S/.	1.88	-5.53%	-10.48%	-4.08%	-6.00%	77.78%	14,281	0.68	10.50	9.81	1,305.49	Public Services	1.44%
- ENDISPC1**	S/.	3.36	0.00%	-2.61%	-12.73%	-37.78%	94.44%	44,393	0.79	5.08	7.39	524.85	Public Services	0.98%
▲ FERREY1 PE**	S/.	1.49	1.36%	1.36%	-8.59%	-14.37%	100.00%	405,107	1.14	12.22	4.65	355.62	Diverse	4.90%
▲ AENZAC1 PE**	S/.	1.20	-0.83%	-25.00%	-17.24%	-31.03%	83.33%	33,884	0.73	0.00	-	255.94	Diverse	4.05%
▼ IFS PE**	US\$	18.30	-2.50%	-3.68%	-23.75%	-40.85%	100.00%	367,433	1.33	4.21	5.16	2,112.69	Diverse	7.22%
▼ INRETC1 PE**	US\$	31.00	-0.64%	-8.82%	-15.99%	-20.92%	100.00%	1,550	0.80	2.20	69.32	3,187.03	Diverse	5.28%
▲ LUSURC1 PE**	S/.	10.70	1.90%	1.90%	-4.89%	-58.04%	77.78%	32,422	0.74	10.42	11.59	1,274.55	Public Services	1.81%
▼ MINSUR1 PE**	S/.	2.05	-1.44%	-3.76%	-10.87%	10.81%	83.33%	2,389	0.96	16.30	3.82	1,445.73	Mining	3.09%
- PML PE**	US\$	0.09	0.00%	0.00%	-15.00%	-19.81%	33.33%	7,310	1.40	0.00	-	22.47	Mining	2.12%
▼ RELAPAC1 PE**	S/.	0.19	-2.12%	15.63%	22.52%	168.12%	88.89%	24,467	1.11	0.00	3.33	376.48	Industrial	2.12%
▼ SCCO PE**	US\$	65.84	-1.42%	1.46%	2.46%	-0.09%	77.78%	133,407	0.89	4.10	17.39	50,899.67	Mining	2.14%
- SIDERC1 PE**	S/.	1.03	0.00%	0.00%	5.10%	21.18%	88.89%	702	0.92	0.00	3.41	223.72	Industrial	1.43%
- TV PE**	US\$	0.16	0.00%	-8.52%	-9.04%	9.52%	55.56%	4,774	1.19	0.00	-	159.24	Mining	2.93%
▲ UNACEMC1 PE**	S/.	1.13	0.89%	-3.42%	-6.61%	-27.10%	100.00%	109,684	1.15	4.07	8.92	502.56	Industrial	3.00%
▼ VOLCABC1 PE**	S/.	0.37	-2.12%	-3.14%	-18.68%	-28.85%	100.00%	59,802	1.51	0.00	-	368.97	Mining	5.90%
- NEXAPEC1 PE**	S/.	2.47	0.00%	-1.20%	-16.27%	-12.72%	38.89%	32,834	1.11	0.00	6.76	798.17	Mining	1.56%

Quantity of shares: 26
Source: Bloomberg, Económática
* Bloomberg Industry Classification System
** PER is used in the stock market and original currency of the instrument
*Legend: Variation 1D: 1 Day; 5D: 5 Days, 1M: 1 Month; YTD: Var.% 12/31/20 to date

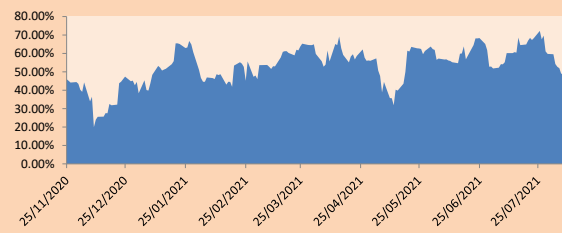
Sectorial Indices

	Close	1D*	5D*	30D*	YTD*	Beta
▼ S&P/BVLMining	385.59	-1.49%	-0.17%	-0.11%	-1.12%	0.84
▲ S&P/BVLConsumer	912.49	1.35%	-6.06%	-13.71%	-16.18%	0.78
▲ S&P/BVLIndustrials	169.68	0.39%	-5.58%	-7.45%	-10.96%	0.88
▼ S&P/BVLFinancials	751.15	-1.83%	1.43%	-11.99%	-27.35%	1.21
▲ S&P/BVLConstruction	180.86	0.08%	-8.78%	-7.77%	-13.51%	0.77
▼ S&P/BVLPublicSvcs	479.17	-2.39%	-6.15%	-6.33%	-21.97%	0.40
▼ S&P/BVLElectricUtil	467.79	-2.39%	-6.15%	-6.33%	-21.97%	0.40

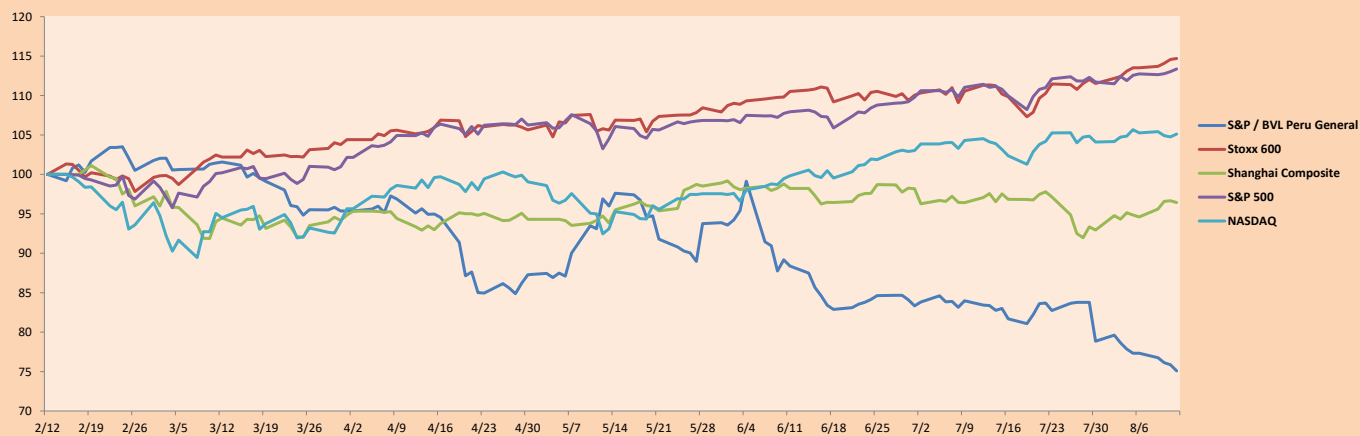
S&P/BVLConstructionTRPEN

*Legend: Variation 1D: 1 Day; 5D: 5 Days, 1M: 1 Month; YTD: Var.% 12/31/20 to date

Correlation Graph of Returns of Mining Index against Metallic Index of London (3 months)



Indices (6 months)



Base: 12/02/21=100
Source: Bloomberg

Capital Market Laboratory Coordinator: Economist Bruno Bellido
Collaboration: María Camarena, Alonso García, Adrian Paredes y Jairo Valverde
email: pulsobursatil@ulima.edu.pe
facebook: www.facebook.com/pulsobursatil.ul

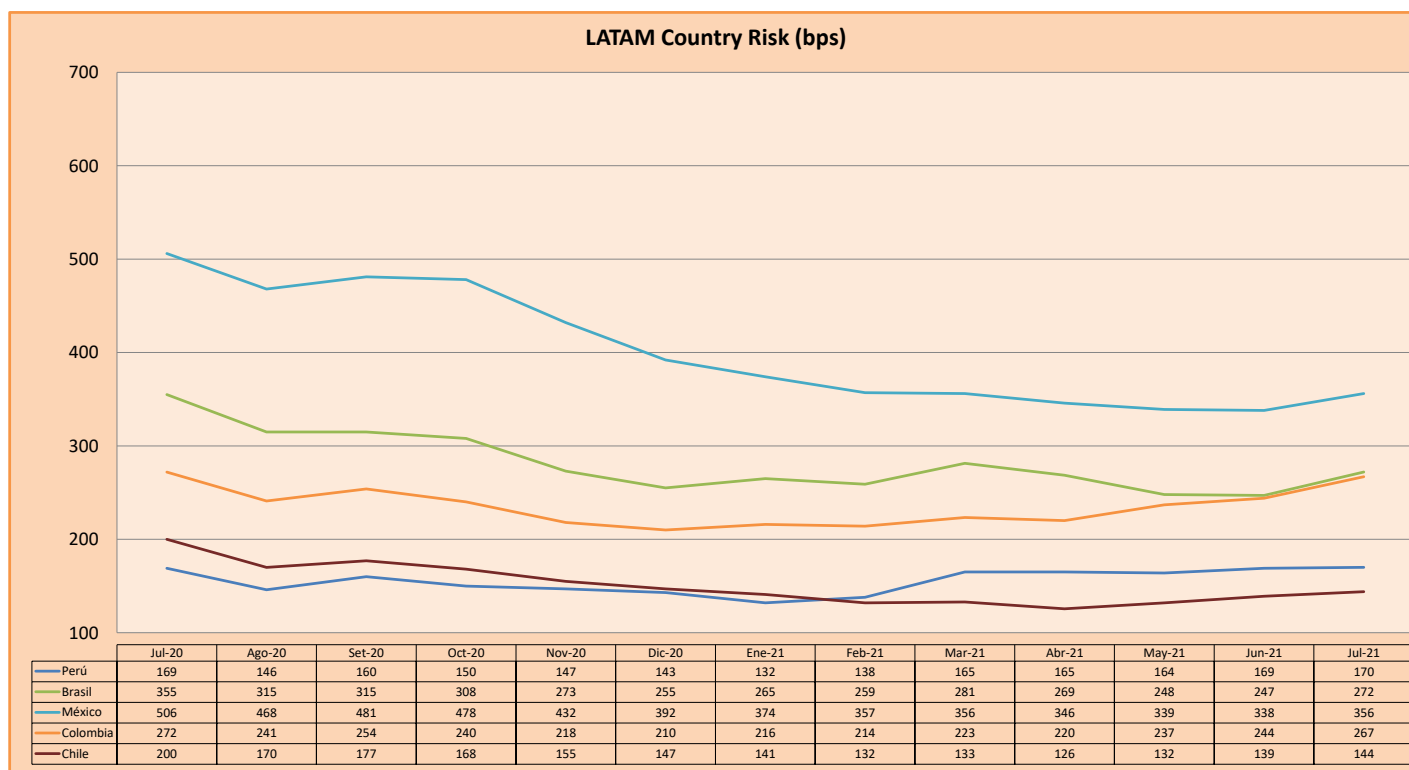
SOVEREIGN RATING

RISK RATINGS			
Moody's	S&P	Fitch	
Aaa	AAA	AAA	Prime
Aa1	AA+	AA+	High credit quality
Aa2	AA	AA	
Aa3	AA-	AA-	
A1	A+	A+	Medium-high grade, with low credit risk
A2	A	A	
A3	A-	A-	
Baa1	BBB+	BBB+	Moderate Credit Risk
Baa2	BBB	BBB	
Baa3	BBB-	BBB-	
Ba1	BB+	BB+	It has speculative elements and it is subject to substantial credit risk
Ba2	BB	BB	
Ba3	BB-	BB-	
B1	B+	B+	It is considered speculative and it has high credit risk
B2	B	B	
B3	B-	B-	
Caa1	CCC+		Bad credit conditions and it is subject to high credit risk
Caa2	CCC		
Caa3	CCC-	CCC	
Ca	C		Very close to default or in default
		DDD	
C	D	DD D	

Source: Bloomberg

Latin America Credit Rating			
Clasificadora de riesgo			
Country	Moody's	Fitch	S&P
Peru	A3	BBB+	BBB+
México	Ba2	BB-	BB-
Venezuela	C	WD	SD
Brazil	Ba2	BB-	BB-
Colombia	Baa2	BB+	BB+
Chile	A1	A-	A
Argentina	Ca	WD	CCC+
Panama	Baa2	BBB-	BBB

Source: Bloomberg



Source: BCRP

Capital Market Laboratory Coordinator: Economist Bruno Bellido
Collaboration: María Camarena, Alonso García, Adrian Paredes y Jairo Valverde
email: pulsobursatil@ulima.edu.pe
facebook: www.facebook.com/pulsobursatil.ul