

PULSO BURSÁTIL

FACULTAD DE CIENCIAS EMPRESARIALES Y ECONÓMICAS
CARRERA DE ECONOMÍA
LABORATORIO DE MERCADO DE CAPITALES

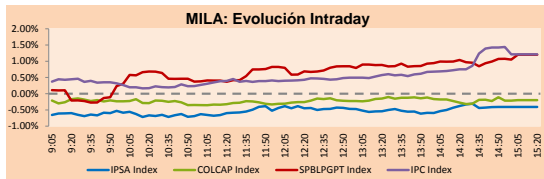


MILA

Lima, August 31, 2021

Main Indexes	Close	1 D	5 D	1 M	YTD	Cap. Burs. (US\$ bill)
▼ IPSA (Chile)	4,491.57	-0.33%	2.80%	5.63%	7.53%	115.90
▼ IGPA (Chile)	22,466.61	-0.26%	2.90%	5.76%	6.95%	138.20
▲ COLSC (Colombia)	982.09	0.22%	-0.18%	2.75%	-8.15%	4.66
▲ COLCAP (Colombia)	1,319.96	-0.20%	-0.63%	6.73%	-8.20%	77.91
▲ S&P/BVL (Perú)	17,653.54	1.20%	8.90%	-0.10%	-15.22%	84.78
▲ S&P/BVL SEL (Perú)	467.41	1.46%	9.57%	-1.44%	-15.23%	76.88
▲ S&P/BVL LIMA 25	23,568.90	1.87%	12.20%	2.57%	-6.47%	84.07
▲ IPC (México)	53,304.74	1.34%	2.54%	4.79%	20.96%	326.17
▲ S&P MILA 40	476.46	0.93%	3.03%	4.48%	-10.88%	6,547.29

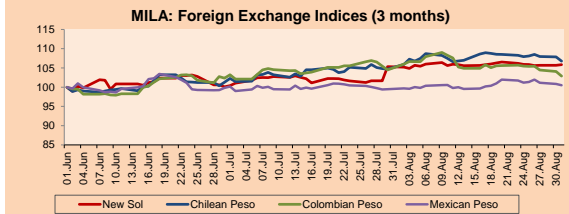
*Legend: Variation 1D: 1 day; 5D: 5 days; 1M: 1 Month; YTD: Var% 12/31/20 to date



Source: Bloomberg

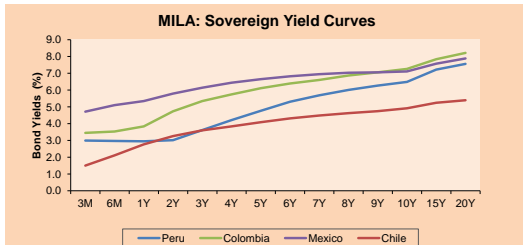
Currency	Price	1D*	5D*	30 D*	YTD*
▲ Sol (PEN)	4.0884	0.12%	-0.07%	0.48%	13.00%
▼ Chilean Peso (CLP)	774.15	-1.02%	-1.09%	2.00%	8.76%
▼ Colombian Peso (COP)	3,771.96	-1.15%	-2.45%	-1.53%	9.98%
▼ Mexican Peso (MXN)	20.07	-0.33%	-0.66%	1.03%	0.80%

*Legend: Variation 1D: 1 day; 5D: 5 days; 1M: 1 Month; YTD: Var% 12/31/20 to date



Base: 01/06/21=100
Source: Bloomberg

Fixed Income	Currency	Price	Bid Yield (%)	Ask Yield (%)	Duration
PERU 7.35 07/21/25	USD	122.377	1.47	1.35	3.46
PERU 4.125 08/25/27	USD	112.522	1.94	1.87	5.39
PERU 8.75 11/21/33	USD	157.602	3.10	3.03	8.55
PERU 6.55 03/14/37	USD	138.633	3.38	3.31	10.16
PERU 5.625 11/18/2050	USD	139.146	3.50	3.46	16.60
CHILE 2.25 10/30/22	USD	102.181	0.56	0.18	1.14
CHILE 3.125 01/21/26	USD	108.269	1.25	1.12	4.13
CHILE 3.625 10/30/42	USD	108.771	3.08	3.04	15.24
COLOM 11.85 03/09/28	USD	156.52	2.56	2.29	4.90
COLOM 10.375 01/28/33	USD	149.766	4.78	4.60	7.65
COLOM 7.375 09/18/37	USD	129.462	4.77	4.70	10.12
COLOM 6.125 01/18/41	USD	116.902	4.81	4.75	12.09
MEX 4 10/02/23	USD	116.902	4.805	4.75	12.09
MEX5.55 01/45	USD	123.3	4.03	3.98	14.31



Source: Bloomberg

Equity

Largest gains	Exchange	Currency	Price	▲%
VOLCAN CIA MIN-B	Peru	PEN	0.49	10.61
BECE SAB DE CV	Mexico	MXN	51.19	6.12
GRUPO CARSO-A1	Mexico	MXN	68.27	5.26
GRUPO F BANORT-O	Mexico	MXN	132.58	3.15
FIBRA UNO	Mexico	MXN	22.85	2.97

Per Turnover	Exchange	Amount (US\$)
WALMART DE MEXIC	Mexico	148,325,661
GRUPO F BANORT-O	Mexico	91,617,496
AMERICA MOVIL-L	Mexico	90,262,293
CEMEX SAB-CPO	Mexico	64,409,505
FOMENTO ECON-UBD	Mexico	53,133,164

Largest losses	Exchange	Currency	Price	▼%
ITAU CORPBANCA	Chile	CLP	2.11	-3.61
BUENAVENTURA-ADI	Peru	USD	7.48	-3.48
CMPC	Chile	CLP	1,719.00	-2.94
CAP	Chile	CLP	11,000.00	-2.65
ENTEL	Chile	CLP	3,770.00	-1.95

Per Volume	Exchange	Volume
BANCO SANTANDER	Chile	458,081,659
BANCO DE CHILE	Chile	174,288,066
ITAU CORPBANCA	Chile	110,946,038
ENEL CHILE SA	Chile	99,001,718
AMERICA MOVIL-L	Mexico	91,770,867

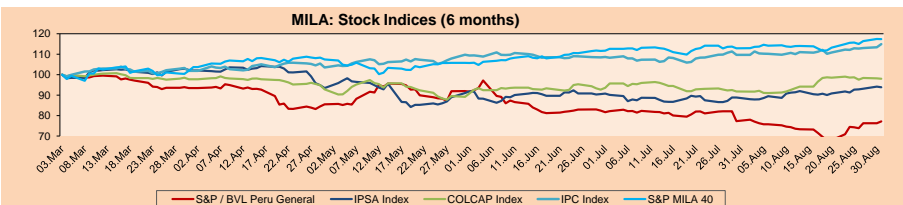
MILA

Peru: The BVL General Index ended today's session with a positive result of +1.20% The index maintains a negative annual cumulative trend of -15.22% in local currency, while the dollar-adjusted performance declined to -24.97%. Then, the S&P / BVL Peru SEL varied by +1.46% while the S&P / BVL LIMA 25 by +1.87%. The spot PEN reached S/4.0884. Headline: Lima Stock Exchange closes in positive territory again due to the financial sector and construction

Chile: The IPSA index ended the day with a negative return of -0.33%. The sectors that lost the most during the day were Industrials (-4.45%) and Communication Services (-1.95%). The shares with the worst performance of the day were Compañía Sudamericana de Vapores (-4.45%) and Corpbanca (-3.61%). Headline: Central Bank applies a drastic interest rate hike before risks of overheating and "imbalances" in the economy

Colombia: The COLCAP index closed today with a negative return of -0.20%. The sectors that benefited the least during the day were Consumer Staples (-0.91%) and Communication Services (-0.74%). The worst performing stocks were Promigas SA (-3.10%) and Banco de Bogota SA (-2.08%). Headline: Unemployment in Colombia dropped 5.9 percentage points in July

Mexico: The IPC index closed the day with a positive return of +1.34%. The sectors that benefited the most during the day were Finance (+2.08%) and Communication Services (+1.82%). The best performing stocks were Bece SAB de CV (+6.12%) and Grupo Carso SAB de CV (+5.26%). Headline: Investment in Mexico's mining sector to grow above US\$5 billion this year

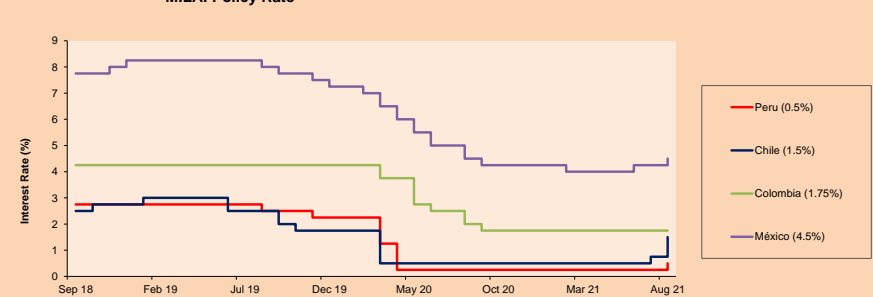


Base: 04/03/21=100
Source: Bloomberg

ETFs

	Curr.	Close	1D	5D	30 D	YTD	Exchange
▲ iShares MSCI All Peru Caped Index Fund	USD	26.88	1.64%	3.38%	0.11%	-22.49%	NYSE Arca
▲ iShares MSCI All Chile Caped Index Fund	USD	28.58	1.31%	4.42%	4.50%	-5.40%	Cboe BZX
▲ Global X MSCI Colombia	USD	10.2952	0.54%	1.43%	8.56%	-9.37%	NYSE Arca
▲ iShares MSCI Mexico Capped	USD	51.11	1.61%	3.48%	4.26%	18.89%	NYSE Arca
▲ iShares MSCI Emerging Markets	USD	52.41	1.37%	1.98%	1.57%	1.43%	NYSE Arca
▲ Vanquard FTSE Emerging Markets	USD	52.23	1.22%	2.05%	2.19%	4.23%	NYSE Arca
▲ iShares Core MSCI Emerging Markets	USD	64.09	1.34%	2.09%	1.39%	3.30%	NYSE Arca
▲ iShares JP Morgan Emerging Markets Bonds	USD	63.88	1.06%	1.75%	3.28%	4.58%	Cboe BZX
▼ Morgan Stanley Emerging Markets Domestic	USD	6.15	-0.16%	0.33%	-0.65%	-2.23%	New York

MILA: Policy Rate



Source: Bloomberg

Capital Market Laboratory Coordinator: Economist Bruno Bellido
Collaboration: María Camarena, Alonso García, Adrian Paredes y Jairo Valverde
email: pulsohorsatil@ulima.edu.pe
facebook: www.facebook.com/pulsohorsatil

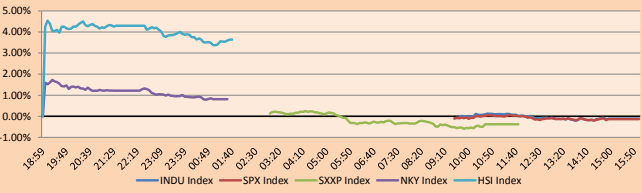
The content of this document is just for informational purposes. The information and opinions expressed should not be consider as recommendations for future decisions. Under any circumstances, the Capital Market Laboratory of University of Lima will be responsible for the use of the statements in this document.

WORLD

Main Indices	Close	1 D*	5 D*	1 M*	YTD*	Market Cap. (US\$ Mill.)
▼ Dow Jones (USA)	35,360.73	-0.11%	-0.02%	1.22%	15.53%	11,064,965
▼ Standard & Poor's 500 (EEUU)	4,522.68	-0.13%	0.81%	2.90%	20.41%	39,980,844
▼ NASDAQ Composite (USA)	15,259.24	-0.04%	1.59%	4.00%	18.40%	25,695,043
▼ Stoxx EUROPE 600 (Europe)	470.88	-0.38%	-0.19%	1.98%	18.01%	11,070,019
▼ DAX (Germany)	15,835.09	-0.33%	-0.44%	1.87%	15.43%	1,198,094
▼ FTSE 100 (United Kingdom)	7,119.70	-0.40%	0.15%	1.24%	10.20%	1,505,127
▼ CAC 40 (France)	6,680.18	-0.11%	0.24%	1.02%	20.33%	1,867,215
▼ IBEX 35 (Spain)	8,846.60	-0.24%	-1.14%	1.97%	9.57%	503,435
▲ MSCI AC Asia Pacific Index	201.79	1.27%	2.05%	2.27%	0.93%	25,922,029
▲ HANG SENG (Hong Kong)	25,878.99	1.33%	0.59%	0.30%	-4.38%	3,892,093
▲ SHANGHAI SE Comp. (China)	3,543.94	0.45%	0.84%	5.22%	2.92%	7,032,852
▲ NIKKEI 225 (Japan)	28,089.54	1.08%	1.29%	4.20%	3.59%	3,918,017
▲ S&P / ASX 200 (Australia)	7,534.90	0.41%	0.43%	1.66%	14.09%	1,769,711
▲ KOSPI (South Korea)	3,199.27	1.34%	2.54%	0.14%	11.60%	1,922,799

*Legend: Variation 1D: 1 Day; 5D: 5 Days; 1M: 1 Month; YTD: Var.% 12/31/20 to date

Global Markets: Intraday Evolution (var %)

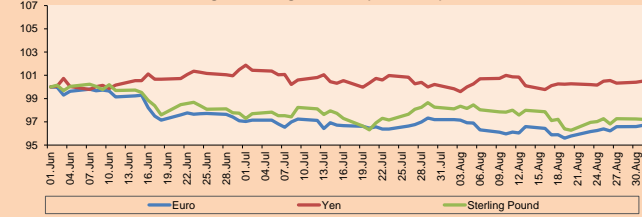


Source: Bloomberg

Currency	Price	1 D*	5 D*	1 M*	YTD*
▲ Euro	1.1809	0.10%	0.45%	-0.51%	-3.33%
▲ Yen	110.0200	0.09%	0.34%	0.27%	6.56%
▲ Sterling Pound	1.3755	-0.04%	0.19%	-1.07%	0.62%
▼ Yuan	6.4607	-0.09%	-0.17%	-0.01%	-1.02%
▼ Hong Kong Dollar	7.7771	-0.12%	-0.13%	0.07%	0.31%
▼ Brazilian Real	5.1529	-0.62%	-1.81%	-1.13%	-0.88%
▲ Argentine Peso	97.7433	0.04%	0.31%	1.08%	16.16%

*Legend: Variation 1D: 1 Day; 5D: 5 Days; 1M: 1 Month; YTD: Var.% 12/31/20 to date

Foreign Exchange Indices (3 months)

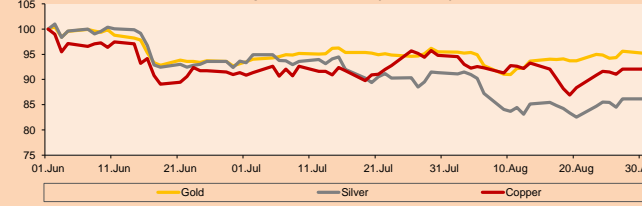


Base: 01/06/21=100
Source: Bloomberg

Commodities	Close	1 D*	5 D*	1 M*	YTD*
▲ Oro (US\$ Oz. T) (LME)	1,813.62	0.18%	0.59%	-0.03%	-4.46%
▲ Plata (US\$ Oz. T) (LME)	23.89	-0.59%	0.14%	-6.26%	-9.50%
▲ Cobre (US\$ TM) (LME)	9,528.25	1.11%	1.60%	-1.78%	22.96%
▲ Zinc (US\$ TM) (LME)	2,994.00	0.11%	-0.48%	-1.14%	9.70%
▼ Petróleo WTI (US\$ Barril) (NYM)	68.50	-1.03%	1.42%	-6.46%	42.68%
▲ Estafío (US\$ TM) (LME)	34,402.00	0.58%	3.29%	-3.74%	67.45%
▼ Plomo (US\$ TM) (LME)	2,386.00	-2.40%	-2.71%	-1.19%	20.76%
▼ Azúcar #11 (US\$ Libra) (NYB-ICE)	19.84	-1.88%	1.33%	10.78%	41.31%
▼ Cacao (US\$ TM) (NYB-ICE)	2,540.00	-2.19%	-1.17%	4.87%	1.52%
▼ Café Arábica (US\$ TM) (NYB-ICE)	195.90	-2.00%	5.46%	7.37%	45.33%

*Leyenda: Variación 1D: 1 Día; 5D: 5 Días; 1M: 1 Mes; YTD: Var.% 31/12/20 a la fecha

Principal Metals Index (3 months)



Base: 01/06/21=100
Source: Bloomberg

Equity

Germany (Stocks from DAX Index)

Largest gains	Curr.	Price	▲%	Exchange	Largest losses	Curr.	Price	▼%	Exchange
BMW GY	EUR	80.37	1.67	Xetra	DTE GY	EUR	18.008	-2.15	Xetra
BMW GY	EUR	33.09	1.29	Xetra	DB1 GY	EUR	146.1	-2.08	Xetra
DBK GY	EUR	10.528	0.77	Xetra	BAS GY	EUR	65.52	-1.86	Xetra
EOAN GY	EUR	11.178	0.58	Xetra	VNA GY	EUR	57.16	-1.65	Xetra

Europe (Stocks from STOXX EUROPE 600)

Largest gains	Curr.	Price	▲%	Exchange	Largest losses	Curr.	Price	▼%	Exchange
AMBUB DC	DKK	199.1	7.19	Copenhagen	AG1 GY	EUR	36.85	-5.71	Xetra
PRX NA	EUR	74.9	6.41	EN Amsterdam	ADE NO	NOK	175	-5.41	Oslo
MOR GY	EUR	49.1	5.12	Xetra	TMV GY	EUR	28.21	-4.08	Xetra
EDPR PL	EUR	22.52	4.84	EN Lisbon	ROO LN	Gbp	348.4	-3.97	Londres

Global Overview:

United States:

The main US indices closed the day with negative returns because investors do not present much optimism about the employment data to be published this Friday and a possible buyback of bonds by the FED that depends on the results of this publication. In turn, it is estimated that only a maximum of 2 months of good employment results would remain and that this would be reflected in inflationary pressure. The DOW JONES -0.11% index closed with losses and with 50% of its values down. The sectors that were most affected were Materials -1.65%, Energy -1.65% and Non-Basic Consumer Products -0.46%. The S&P 500 Index -0.13% also closed with a negative performance as some investors believe that the market is entering the weakest period of the year in terms of earnings. The sectors that presented the most losses were Energy -0.73%, Information Technology -0.56% and Materials -0.31%. Finally, the NASDAQ -0.06% closed with a loss after inflation concerns and an increase in the positivity of Covid19 cases detracted from earnings. The most affected shares on the day were SVD Investment Corp 2-CLS A -57.57% and Silverbox Engaged Merger C-A -37.64%. In this way; S&P 500 -0.13 %%; NASDAQ -0.06%; DOW JONES -0.11% ended the day higher.

Europe:

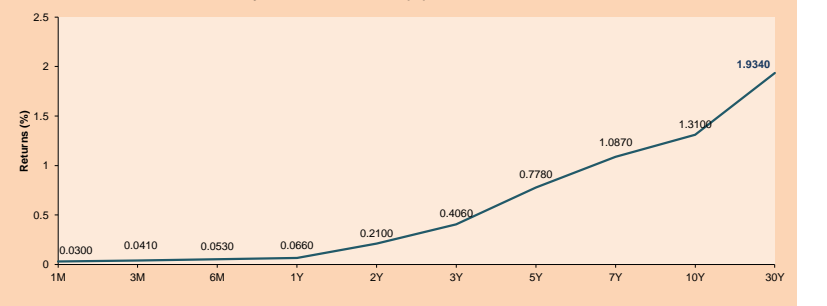
The main indices on the European continent ended the session with negative returns due to concerns about the withdrawal of stimulus. European Central Bank board member Robert Holzmann's announcement that the ECB will have to start discussing how to reduce stimulus alarmed investors. Investors are pondering the consequences of a stimulus withdrawal after stimulus has driven indices higher, according to Reuters. The STOXX 600 closed lower dragged down by the Communications -1.12% and Energy -0.96% sectors. In individual stocks Bunzl Plc declined 1.6% following half-year results and an unchanged outlook, while biotech firm Galapagos NV rose 7.2% after announcing the planned retirement of its chief executive officer. In Germany, Germany's center-left Social Democrats (SPD) widened their lead over Chancellor Angela Merkel's conservatives, according to a latest poll released Monday, just weeks before a general election. Thus, STOXX 600 -0.38%; FTSE 100 -0.40%; CAC 40 -0.11%; DAX -0.33%; IBEX 35 -0.24% closed the day with losses.

Asia:

Main Asia, indices closed the session mostly higher as new signs of a slowdown in China's economy spurred hopes for more stimulus. Thus, the Hong Kong stock market closed with gains after data showed that the Chinese economy came under further pressure in August due to sluggish expansion in manufacturing activity. The manufacturing PMI slowed to 50.1 points, while, the services PMI contracted to 47.5; a level not seen since February 2020. This behavior is in response to the new wave of contagion in China. Similarly, the Tokyo stock market ended with upward results thanks to the high appetite of investors after the sharp fall in recent days. The sectors that recorded the biggest gains were shipping, steel and metal and precision machinery. Thus, HANG SENG +1.33%; CSI 300 -0.16%; SHANGHAI COMPOSITE +0.45%; KOSPI +1.75%; S&P/ASX 200 +0.40%; NIKKEI +1.08% closed the session mixed.

ETFs	Curr.	Close	1D	5D	30 D	YTD	Exchange
SPDR S&P 500 ETF TRUST	USD	451.56	-0.15%	0.80%	2.98%	20.78%	NYSE Arca
ISHARES MSCI EMERGING MARKET	USD	52.41	1.37%	1.98%	1.57%	1.43%	NYSE Arca
ISHARES IBOXX HIGH YLD CORP	USD	88.09	0.02%	0.47%	0.28%	0.90%	NYSE Arca
FINANCIAL SELECT SECTOR SPDR	USD	38.40	-0.13%	0.44%	5.15%	30.26%	NYSE Arca
VANECK GOLD MINERS	USD	32.60	1.34%	1.53%	-6.64%	-9.49%	NYSE Arca
ISHARES RUSSELL 2000 ETF	USD	225.92	0.20%	1.87%	2.20%	15.23%	NYSE Arca
SPDR GOLD SHARES	USD	169.69	0.20%	0.62%	-0.08%	-4.86%	NYSE Arca
ISHARES 20+ YEAR TREASURY BO	USD	148.83	-0.68%	-0.30%	-0.46%	-5.64%	NASDAQ GM
INVESCO QQQ TRUST SERIES I	USD	379.95	-0.08%	1.49%	4.22%	21.10%	NASDAQ GM
ISHARES BIOTECHNOLOGY ETF	USD	172.28	0.17%	0.48%	3.92%	13.72%	NASDAQ GM
ENERGY SELECT SECTOR SPDR	USD	48.40	-0.68%	0.00%	-2.00%	27.70%	NYSE Arca
PROSHARES ULTRA VIX ST FUTUR	USD	21.81	-0.68%	-7.19%	-23.58%	-79.52%	Cboe BZX
UNITED STATES OIL FUND LP	USD	48.04	-0.74%	1.41%	-5.17%	45.53%	NYSE Arca
ISHARES MSCI BRAZIL ETF	USD	36.40	-0.84%	0.30%	-2.67%	-1.81%	NYSE Arca
SPDR S&P OIL & GAS EXP & PR	USD	82.65	0.77%	4.40%	-0.18%	41.28%	NYSE Arca
UTILITIES SELECT SECTOR SPDR	USD	68.54	-0.12%	-0.06%	3.90%	9.31%	NYSE Arca
ISHARES US REAL ESTATE ETF	USD	108.79	0.47%	2.36%	1.94%	27.02%	NYSE Arca
SPDR S&P BIOTECH ETF	USD	132.84	0.92%	3.98%	7.64%	-5.64%	NYSE Arca
ISHARES IBOXX INVESTMENT GRA	USD	135.30	-0.23%	0.21%	-0.52%	-2.05%	NYSE Arca
ISHARES JP MORGAN US EMERGI	USD	113.39	0.04%	0.71%	0.59%	-2.17%	NASDAQ GM
REAL ESTATE SELECT SECT SPDR	USD	47.68	0.59%	2.60%	2.80%	30.42%	NYSE Arca
ISHARES CHINA LARGE-CAP ETF	USD	40.94	1.84%	0.34%	0.99%	-11.82%	NYSE Arca
CONSUMER STAPLES SPDR	USD	72.26	0.22%	0.39%	1.05%	7.13%	NYSE Arca
VANECK JR GOLD MINERS	USD	43.11	1.55%	2.35%	-5.93%	-20.52%	NYSE Arca
SPDR BBG BARC HIGH YIELD BND	USD	110.00	0.02%	0.47%	0.21%	0.97%	NYSE Arca
VANGUARD REAL ESTATE ETF	USD	108.58	0.47%	2.51%	2.15%	27.85%	NYSE Arca
BITSCALE BITCOIN TRUST BTC	USD	37.77	-2.90%	-3.38%	8.74%	18.03%	OTC US

USA Treasury Bonds Yield Curve (%)



Source: Bloomberg

Capital Market Laboratory Coordinator: Economist Bruno Bellido
Collaboration: Maria Camarena, Alonso García, Adrian Paredes y Jairo Valverde
email: pulsohorsatil@ulima.edu.pe
facebook: www.facebook.com/pulsohorsatil.ul

LIMA

Stocks

	Ticker	Currency	Price	1D*	5D*	30D*	YTD*	Frequency	Volume (US\$)	Beta	Dividend Yield (%)	Price Earning	Market Cap. (M US\$)	Economic Sector*	Index Weight
▲	ALICORC1 PE**	S/.	4.79	0.22%	-0.18%	2.75%	-9.15%	100.00%	894,259	1.00	17.43	9.86	1,000.35	Industrial	3.53%
	ATACOCB1 PE**	S/.	0.09	0.00%	1.12%	-1.10%	-34.78%	42.11%	160	1.09	0.00	-	20.80	Mining	1.02%
▼	BACKUSI1 PE**	S/.	16.30	-1.21%	-0.06%	-8.43%	-19.11%	84.21%	11,020	0.71	5.74	7.87	5,549.77	Industrial	0.82%
▲	BAP PE**	US\$	106.61	2.76%	3.22%	5.25%	-33.62%	100.00%	84,454	1.19	0.00	-	10,062.10	Diverse	5.82%
▼	BVN PE**	US\$	7.48	-3.48%	3.89%	-8.89%	-37.67%	94.74%	680,576	1.11	0.00	-	2,058.21	Mining	5.88%
▲	CASAGRC1 PE**	S/.	5.12	2.40%	13.78%	63.58%	7.79%	84.21%	11,726	1.29	14.61	4.67	105.49	Agricultural	1.31%
▲	BBVAC1 PE**	S/.	1.72	4.88%	4.88%	-4.44%	-17.94%	89.47%	91,632	1.16	2.54	17.53	2,843.30	Finance	2.85%
▼	CORAREI1 PE**	S/.	1.02	-0.97%	2.00%	4.08%	14.61%	94.74%	36,796	1.26	23.41	2.02	317.35	Industrial	1.72%
-	CPACASC1 PE**	S/.	4.40	0.00%	-4.35%	-11.29%	-16.98%	94.74%	241,592	0.69	17.95	31.43	499.52	Industrial	2.38%
▼	CVERDEC1 PE**	US\$	15.70	-1.88%	-0.32%	8.28%	-24.95%	100.00%	236,340	1.40	3.64	7.02	5,495.88	Mining	5.25%
-	ENGPEC1 PE**	S/.	1.96	0.00%	0.00%	-19.51%	-17.51%	52.63%	408	0.67	0.00	8.61	1,145.67	Public Services	1.44%
-	ENDISPC1**	S/.	3.20	0.00%	3.23%	-14.67%	-40.74%	68.42%	158	0.79	0.00	7.04	499.81	Public Services	0.98%
-	FERREYC1 PE**	S/.	1.72	0.00%	5.52%	9.55%	-1.15%	100.00%	106,047	1.16	10.59	5.35	410.47	Diverse	4.90%
▲	AENZAC1 PE**	S/.	1.37	5.38%	17.09%	-0.72%	-21.26%	89.47%	353,768	0.93	0.00	-	292.17	Diverse	4.05%
▲	IFS PE**	US\$	22.77	4.45%	5.08%	11.95%	-26.41%	89.47%	230,413	1.25	3.38	6.42	2,628.74	Diverse	7.22%
▼	INRETC1 PE**	US\$	28.50	-1.72%	-1.72%	-19.19%	-27.30%	94.74%	295,367	0.84	2.39	47.74	2,930.01	Diverse	5.28%
▲	LUSURC1 PE**	S/.	10.55	0.48%	0.48%	0.48%	-58.63%	68.42%	2,715	0.74	10.57	11.43	1,256.56	Public Services	1.81%
▲	MINSURI1 PE**	S/.	2.58	5.31%	14.67%	23.44%	39.46%	78.95%	68,617	0.99	12.95	3.14	1,819.33	Mining	3.09%
-	PML PE**	US\$	0.09	0.00%	-4.49%	-5.56%	-19.81%	36.84%	3,156	1.23	0.00	-	22.47	Mining	2.12%
▼	RELAPAC1 PE**	S/.	0.17	-1.19%	-1.19%	21.17%	140.58%	100.00%	92,503	1.01	0.00	2.99	337.78	Industrial	2.12%
▲	SCCO PE**	US\$	62.45	-0.64%	-1.34%	-4.58%	-5.24%	84.21%	63,006	0.82	4.32	16.49	48,278.93	Mining	2.14%
▲	SIDERC1 PE**	S/.	1.11	4.72%	4.72%	-7.88%	2.97%	94.74%	12,186	0.90	44.72	2.90	190.05	Industrial	1.43%
-	TV PE**	US\$	0.15	0.00%	6.43%	-14.86%	1.36%	68.42%	62,118	1.21	0.00	-	147.37	Mining	2.93%
▲	UNACEMC1 PE**	S/.	1.40	5.26%	13.82%	14.75%	-9.68%	100.00%	333,801	1.27	3.29	11.05	622.59	Industrial	3.00%
▲	VOLCABC1 PE**	S/.	0.49	10.61%	27.27%	23.12%	-5.77%	100.00%	2,306,811	1.76	0.00	-	488.58	Mining	5.90%
-	NEXAPEC1 PE**	S/.	2.71	0.00%	9.72%	3.83%	-4.24%	36.84%	25,377	1.14	0.00	7.41	882.36	Mining	1.56%

Quantity of shares: 26

Source: Bloomberg, Economática

* Bloomberg Industry Classification System

** PER is used in the stock market and original currency of the instrument

*Legend: Variation 1D: 1 Day; 5D: 5 Days, 1M: 1 Month; YTD: Var.% 12/31/20 to date

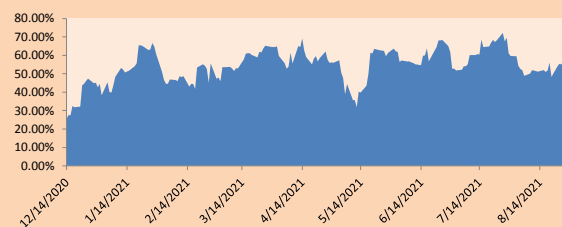
Sectorial Indices

		Close	1D*	5D*	30D*	YTD*	Beta
▼	S&P/BVLMining	384.91	-0.41%	1.38%	-1.87%	-1.29%	0.80
▼	S&P/BVLConsumer	899.16	-0.36%	0.36%	-10.81%	-17.40%	0.83
▲	S&P/BVLIndustrials	188.35	1.90%	6.06%	4.50%	-1.16%	0.98
▲	S&P/BVLFinancials	790.50	3.20%	3.32%	6.06%	-23.54%	1.12
▲	S&P/BVLConstruction	198.71	2.91%	6.54%	2.00%	-4.98%	0.90
▲	S&P/BVLPublicSvcs	463.86	0.99%	4.28%	-9.56%	-24.47%	0.38
▲	S&P/BVLElectricUtil	452.84	0.99%	4.28%	-9.56%	-24.47%	0.38

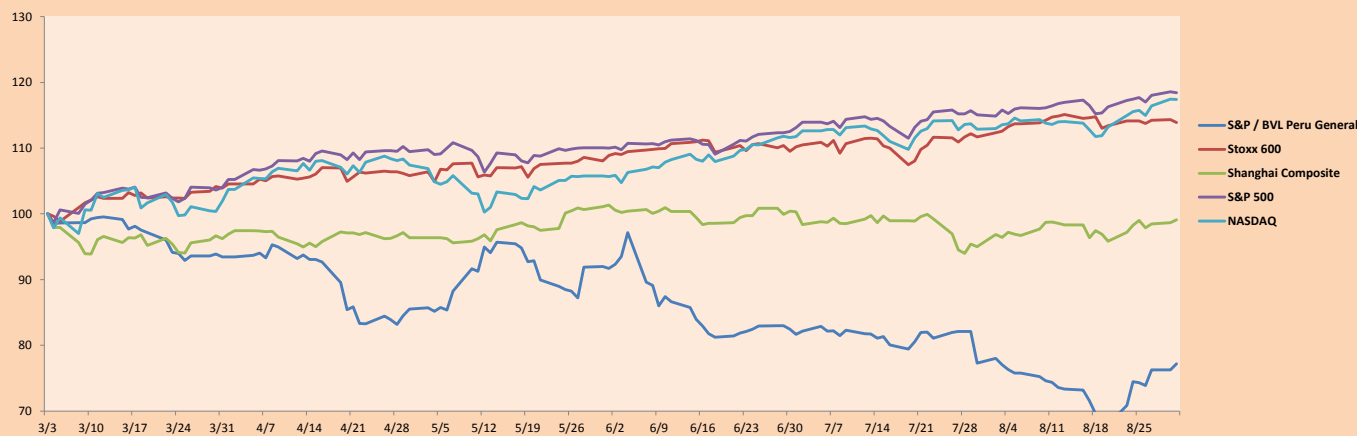
S&P/BVLConstructionTRPEN

*Legend: Variation 1D: 1 Day; 5D: 5 Days, 1M: 1 Month; YTD: Var.% 12/31/20 to date

Correlation Graph of Returns of Mining Index against Metallic Index of London (3 months)



Indices (6 months)



Base: 03/03/21=100

Source: Bloomberg

Capital Market Laboratory Coordinator: Economist Bruno Bellido
 Collaboration: María Camarena, Alonso García, Adrian Paredes y Jairo Valverde
 email: pulsobursatil@ulima.edu.pe
 facebook: www.facebook.com/pulsobursatil.ul

SOVEREIGN RATING

RISK RATINGS

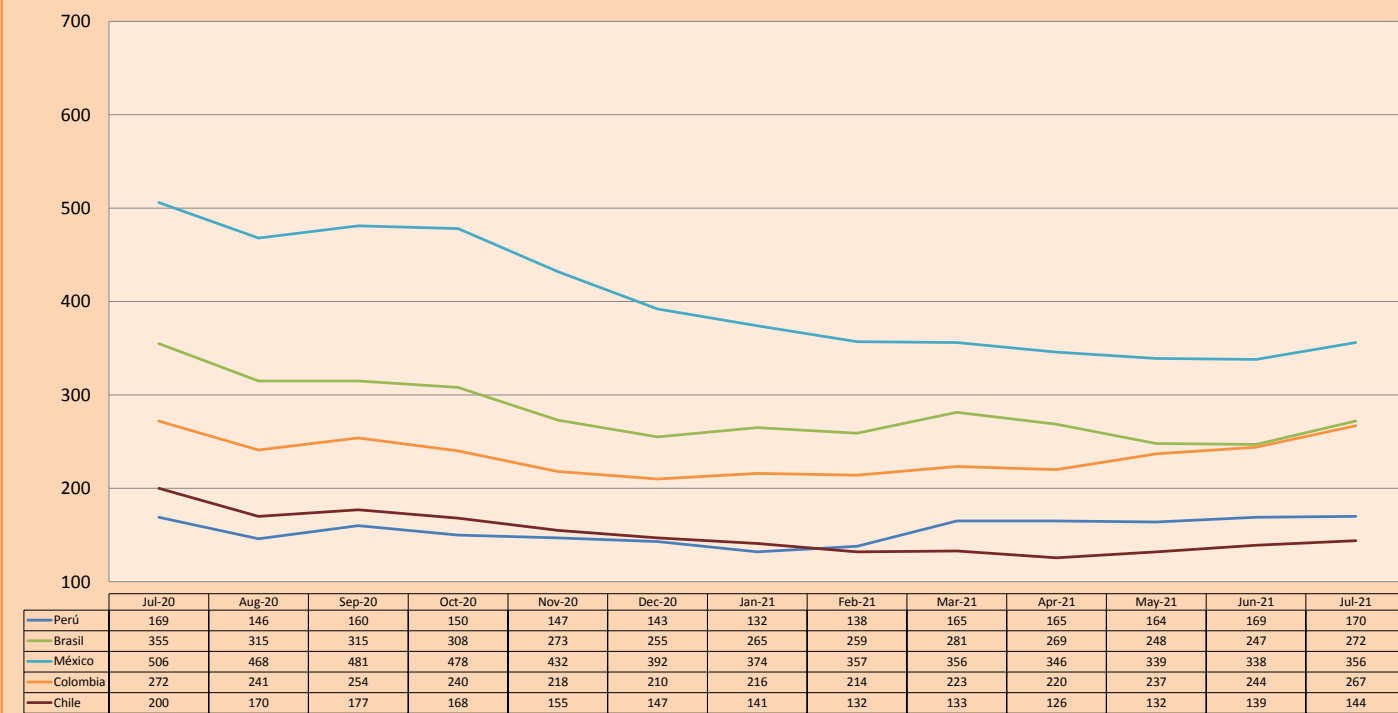
Moody's	S&P	Fitch	
Aaa	AAA	AAA	Prime
Aa1	AA+	AA+	High credit quality
Aa2	AA	AA	
Aa3	AA-	AA-	
A1	A+	A+	Medium-high grade, with low credit risk
A2	A	A	
A3	A-	A-	
Baa1	BBB+	BBB+	Moderate Credit Risk
Baa2	BBB	BBB	
Baa3	BBB-	BBB-	
Ba1	BB+	BB+	It has speculative elements and it is subject to substantial credit risk
Ba2	BB	BB	
Ba3	BB-	BB-	
B1	B+	B+	It is considered speculative and it has high credit risk
B2	B	B	
B3	B-	B-	
Caa1	CCC+		Bad credit conditions and it is subject to high credit risk
Caa2	CCC		
Caa3	CCC-		
Ca	CC		
	C		
C	D	DD	Very close to default or in default
		D	

Source: Bloomberg

Latin America Credit Rating			
Clasificadora de riesgo			
Country	Moody's	Fitch	S&P
Peru	A3	BBB+	BBB+
México	Ba2	BB-	BB-
Venezuela	C	WD	SD
Brazil	Ba2	BB-	BB-
Colombia	Baa2	BB+	BB+
Chile	A1	A-	A
Argentina	Ca	WD	CCC+
Panama	Baa2	BBB-	BBB

Source: Bloomberg

LATAM Country Risk (bps)



Source: BCRP

Capital Market Laboratory Coordinator: Economist Bruno Bellido
Collaboration: Maria Camarena, Alonso García, Adrian Paredes y Jairo Valverde
email: pulsobursatil@ulima.edu.pe
facebook: www.facebook.com/pulsobursatil.ul