

PULSO BURSÁTIL

FACULTAD DE CIENCIAS EMPRESARIALES Y ECONÓMICAS
CARRERA DE ECONOMÍA
LABORATORIO DE MERCADO DE CAPITALES

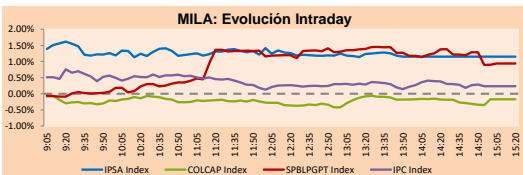


MILA

Lima, Sep 10, 2021

Main Indexes	Close	1 D	5 D	1 M	YTD	Cap. Burs. (US\$ bill)
▲ IPSA (Chile)	4,464.00	1.29%	0.01%	1.41%	6.87%	111.20
▲ IGPA (Chile)	22,287.89	1.27%	-0.14%	1.49%	6.10%	132.64
▲ COLSC (Colombia)	968.13	0.08%	0.30%	3.35%	-8.49%	4.57
▼ COLCAP (Colombia)	1,320.52	-0.17%	-0.52%	4.08%	-8.16%	76.03
▲ S&P/BVL (Perú)*	17,715.49	0.94%	0.21%	5.63%	-14.92%	85.76
▲ S&P/BVL SEL (Perú)	468.85	2.07%	1.03%	6.32%	-14.97%	76.53
▲ S&P/BVL LIMA 25	24,160.62	1.68%	1.74%	11.65%	-4.12%	85.06
▲ IPC (México)	51,521.80	0.25%	-0.60%	1.05%	16.92%	319.05
▲ S&P MILA 40	466.66	1.10%	-1.85%	1.05%	-12.71%	6,346.57

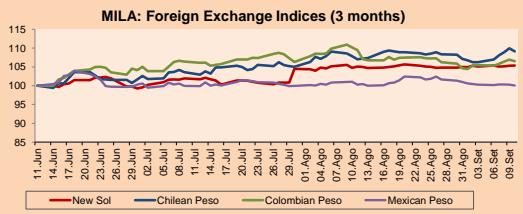
*Legend: Variation 1D: 1 day; 5D: 5 days; 1M: 1 Month; YTD: Var% 12/31/20 to date



Source: Bloomberg

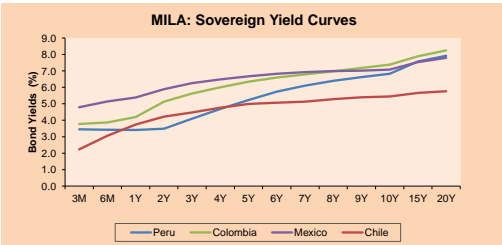
Currency	Price	1D*	5D*	30 D*	YTD*
▲ Sol (PEN)	4,1026	0.05%	0.22%	0.24%	13.39%
▼ Chilean Peso (CLP)	788.63	-0.73%	2.72%	1.99%	10.80%
▼ Colombian Peso (COP)	3,838.69	-0.38%	1.00%	-2.67%	11.92%
▼ Mexican Peso (MXN)	19.89	-0.22%	-0.18%	-0.18%	-0.11%

*Legend: Variation 1D: 1 day; 5D: 5 days; 1M: 1 Month; YTD: Var% 12/31/20 to date



Base: 11/06/21=100
Source: Bloomberg

Fixed Income	Currency	Price	Bid Yield (%)	Ask Yield (%)	Duration
PERU 7.35 07/21/25	USD	122.269	1.46	1.32	3.43
PERU 4.125 08/25/27	USD	112.533	1.93	1.84	5.36
PERU 8.75 11/21/33	USD	157.736	3.08	3.01	8.52
PERU 6.55 03/14/37	USD	136.74	3.36	3.30	10.37
PERU 5.625 11/19/2050	USD	139.739	3.47	3.44	16.59
CHILE 2.25 10/30/22	USD	102.113	0.58	0.16	1.11
CHILE 3.125 10/31/26	USD	107.927	1.30	1.19	4.10
CHILE 3.625 10/30/42	USD	108.418	3.10	3.06	15.17
COLOM 11.85 03/09/28	USD	156.726	2.52	2.21	5.06
COLOM 10.375 01/28/33	USD	149.332	4.81	4.63	7.60
COLOM 7.375 09/18/37	USD	129.177	4.79	4.72	10.06
COLOM 6.125 01/18/41	USD	116.596	4.83	4.77	12.00
MEX 4 10/02/23	USD	116.596	4.827	4.769	12
MEX 5.55 01/45	USD	122.784	4.06	4.01	14.22



Source: Bloomberg

Equity	Exchange	Currency	Price	▲%
Largest gains				
VOLCAN CIA MIN-B	Peru	PEN	0.61	8.93
INRETAIL PERU CO	Peru	USD	30.00	5.63
SOUTHERN COPPER	Peru	USD	63.15	3.95
SOQUIMICH-B	Chile	CLP	44,301.00	3.87
CMPC	Chile	CLP	1,690.00	2.99

Per Turnover	Exchange	Amount (US\$)
WALMART DE MEXIC	Mexico	36,047,401
AERO DEL PACIF-B	Mexico	34,339,289
GRUPO F BANORT-O	Mexico	32,666,663
AMERICA MOVIL-L	Mexico	24,388,761
GRUPO MEXICO-B	Mexico	22,221,472

Largest losses	Exchange	Currency	Price	▼%
BUENAVENTURA-AD	Peru	USD	7.04	-3.83
GRUPO TELEV-CPO	Mexico	MXN	48.89	-2.86
CENCOSUD SHOPPII	Chile	CLP	1,030.00	-2.55
PROMOTORA Y OPE	Mexico	MXN	147.83	-2.54
BECLE SAB DE CV	Mexico	MXN	49.04	-1.49

Per Volume	Exchange	Volume
ITAU CORPBANCA	Chile	1,100,349,532
BANCO SANTANDER	Chile	408,331,919
BANCO DE CHILE	Chile	239,838,412
ENEL CHILE SA	Chile	145,973,668
ENEL AMERICAS SA	Chile	125,699,986

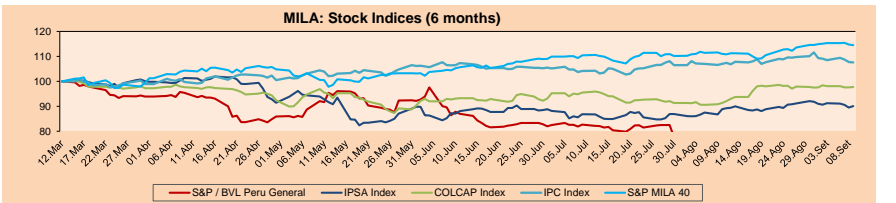
MILA

Peru: The BVL index maintains a negative annual cumulative trend of -14.92% in local currency, while the dollar-adjusted performance amounted to -24.97%. Then, the S&P / BVL Peru SEL varied by +1.89% while the S&P / BVL LIMA 25 by +1.68%. The spot PEN reached 5 / 4.1025. Headline: New ministers and clear economic policy: Castillo's challenges to recover business confidence and Peru's rating.

Chile: The IPSA index ended the day with a positive return of +1.29%. The most benefited sectors of the day were Materials (+3.42%) and Industrials (+2.07%). The best performing stocks were Sociedad Química y Minera (-8.87%) and Empresas CMPC SA (+2.99%). Headline: Chilean analysts forecast another key rate hike in October.

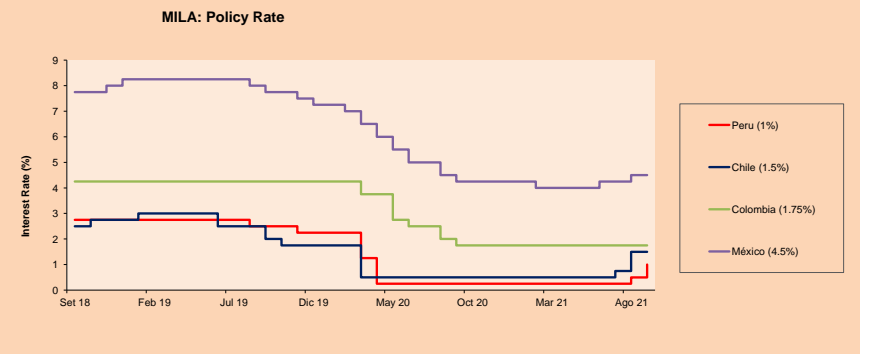
Colombia: The COLCAP index ended the day with a negative return of -0.17%. The sectors that lost the most during the day were Energy (0.70%) and Utilities (-0.31%). The worst performing stocks were Banco Davivienda SA (-1.13%) and Mineros SA (-1.06%). Headline: Colombia: Karen Abudinen resigns after corruption scandal in digital centers.

Mexico: The IPC index closed the day with a positive return of +0.25%. The sectors that lost the most during the day were Materials (+1.10%) and Financials (+0.73%). The best performing stocks were Grupo Mexico SAB de CV (+2.14%) and Banco del Bajío SA (+1.72%). Headline: Mexico and the U.S. reach agreement to strengthen supply chains and cooperate on migration



Base: 15/03/21=100
Source: Bloomberg

ETFs	Curr.	Close	1D	5D	30 D	YTD	Exchange
▲ iShares MSCI All Peru Caped Index Fund	USD	27.38	1.37%	2.28%	3.99%	-21.05%	NYSE Arca
▲ iShares MSCI All Chile Caped Index Fund	USD	27.72	1.95%	-3.04%	0.18%	-8.24%	Cboe BZX
▼ Global X MSCI Colombia	USD	10.061	-0.19%	-1.98%	5.79%	-11.43%	NYSE Arca
▲ iShares MSCI Mexico Capped	USD	50.01	0.28%	-0.62%	1.42%	16.33%	NYSE Arca
▼ iShares MSCI Emerging Markets	USD	52.49	-0.11%	-1.19%	0.32%	1.59%	NYSE Arca
▼ Vanguard FTSE Emerging Markets	USD	52.53	-0.15%	-0.68%	1.35%	4.83%	NYSE Arca
▼ iShares Core MSCI Emerging Markets	USD	64.19	-0.03%	-1.14%	0.45%	3.47%	NYSE Arca
▲ iShares JP Morgan Emerging Markets Bonds	USD	63.92	0.02%	-0.59%	1.75%	4.65%	Cboe BZX
▼ Morgan Stanley Emerging Markets Domestic	USD	6.28	-0.48%	0.64%	2.61%	-0.16%	New York



Source: Bloomberg

Capital Market Laboratory Coordinator: Economist Bruno Bellido
Collaboration: María Camarena, Alonso García, Adrian Paredes y Jairo Valverde
email: pulso@ulima.edu.pe
facebook: www.facebook.com/pulso@ulima.edu.pe

The content of this document is just for informational purposes. The information and opinions expressed should not be considered as recommendations for future decisions. Under any circumstances, the Capital Market Laboratory of University of Lima will be responsible for the use of the statements in this document.

WORLD

Main Indices	Close	1 D*	5 D*	1 M*	YTD*	Market Cap. (US\$ Mill.)
▼ Dow Jones (USA)	34,607.72	-0.78%	-2.36%	-2.56%	13.07%	10,863,910
▼ Standard & Poor's 500 (E EEUU)	4,458.58	-0.77%	-1.73%	-0.21%	18.70%	39,421,915
▼ NASDAQ Composite (USA)	15,115.49	-0.87%	-1.41%	1.97%	17.28%	25,489,747
▼ Stoxx EUROPE 600 (Europe)	466.34	-0.26%	-1.18%	-1.99%	16.87%	10,978,911
▼ DAX (Germany)	15,809.81	-0.09%	-1.09%	-2.30%	13.78%	1,178,859
▲ FTSE 100 (United Kingdom)	7,029.20	0.07%	-1.53%	-2.83%	8.80%	1,474,958
▼ CAC 40 (France)	6,663.77	-0.31%	-0.39%	-3.37%	20.04%	1,871,309
▼ IBEX 35 (Spain)	8,695.30	-1.20%	-1.90%	-3.38%	7.70%	493,620
▲ MSCI AC Asia Pacific Index	206.61	0.96%	0.79%	3.38%	3.35%	26,846,583
▲ HANG SENG (Hong Kong)	26,205.91	1.91%	1.17%	-0.70%	-3.78%	4,038,267
▲ SHANGHAI SE Comp. (China)	3,703.11	0.27%	3.39%	5.31%	8.62%	7,389,409
▲ NIKKEI 225 (Japan)	30,381.84	1.25%	4.30%	8.60%	10.70%	4,176,120
▲ S&P / ASX 200 (Australia)	7,406.63	0.50%	-1.55%	-2.91%	12.44%	1,747,661
▲ KOSPI (South Korea)	3,125.76	0.25%	-0.60%	-1.44%	8.78%	1,863,495

*Legend: Variation 1D: 1 Day; 5D: 5 Days; 1M: 1 Month; YTD: Var.% 12/31/20 to date

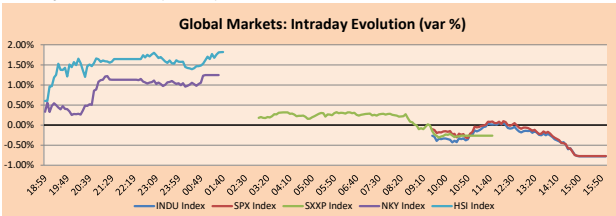
Equity

Germany (Stocks from DAX Index)

Largest gains	Curr.	Price	▲%	Exchange	Largest losses	Curr.	Price	▼%	Exchange
SIE GY	EUR	146.08	1.91	Xetra	DTE GY	EUR	17.342	-2.20	Xetra
DAI GY	EUR	69.14	0.93	Xetra	FRE GY	EUR	41.755	-1.54	Xetra
CON GY	EUR	107.88	0.82	Xetra	MUV2 GY	EUR	241.55	-1.37	Xetra
BMW GY	EUR	79.15	0.65	Xetra	VNA GY	EUR	52.6	-1.31	Xetra

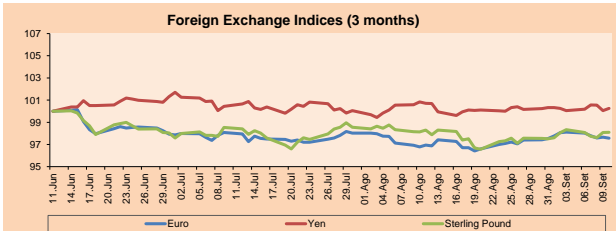
Europe (Stocks from STOXX EUROPE 600)

Largest gains	Curr.	Price	▲%	Exchange	Largest losses	Curr.	Price	▼%	Exchange
ASM NA	EUR	366	3.98	EN Amsterdam	FME GY	EUR	61.78	-4.81	Xetra
BESI NA	EUR	80	3.98	EN Amsterdam	ICOR GY	EUR	43.46	-4.46	Xetra
LPP PW	PLN	14560	3.63	Warsaw	JXN-W LN	USD	27	-4.28	New York
NHY NO	NOK	66.6	3.54	Oslo	RBREW DC	DKK	781.2	-4.17	Copenhagen



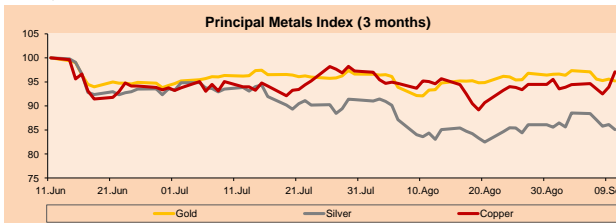
Currency	Price	1 D*	5 D*	1 M*	YTD*
▼ Euro	1.1814	-0.09%	-0.56%	0.64%	-3.29%
▲ Yen	109.9400	0.20%	0.21%	-0.44%	6.48%
▲ Sterling Pound	1.3839	0.01%	-0.23%	-0.21%	1.24%
▼ Yuan	6.4443	-0.17%	-0.17%	-0.54%	-1.27%
- Hong Kong Dollar	7.7776	0.00%	0.07%	-0.01%	0.32%
▲ Brazilian Real	5.2469	0.77%	1.04%	0.46%	0.93%
▲ Argentine Peso	98.0984	0.05%	0.23%	1.08%	16.58%

*Legend: Variation 1D: 1 Day; 5D: 5 Days; 1M: 1 Month; YTD: Var.% 12/31/20 to date



Commodities	Close	1 D*	5 D*	1 M*	YTD*
▼ Oro (US\$ Oz. T) (LME)	1,787.58	-0.39%	-2.20%	2.05%	-5.84%
▼ Plata (US\$ Oz. T) (LME)	23.74	-1.23%	-3.93%	0.84%	-10.07%
▲ Cobre (US\$ TM) (LME)	9,884.50	3.36%	2.80%	2.13%	24.98%
▲ Zinc (US\$ TM) (LME)	3,109.90	1.56%	4.12%	2.43%	13.91%
▲ Petróleo WTI (US\$ Barril) (NYM)	69.72	2.32%	0.62%	1.01%	45.22%
▲ Estafío (US\$ TM) (LME)	34,368.00	0.81%	2.98%	-5.42%	67.29%
▲ Plomo (US\$ TM) (LME)	2,338.50	-0.11%	-2.54%	-1.40%	18.36%
▼ Azúcar #11 (US\$ Lbarril) (NYB-ICE)	19.51	-2.06%	-3.99%	-2.25%	36.72%
▼ Cacao (US\$ TM) (NYB-ICE)	2,603.00	-2.62%	-1.92%	0.89%	4.04%
▲ Café Arábica (US\$ TM) (NYB-ICE)	188.05	0.32%	-2.56%	0.56%	39.50%

*Legend: Variación 1D: 1 Día; 5D: 5 Días; 1M: 1 Mes; YTD: Var.% 31/12/20 a la fecha



Global Overview:

United States:

The U.S. market closed the day's trading session lower, ending the week on a five-day negative streak. President Joe Biden spoke with Chinese President Xi Jinping for the first time in months, providing confidence to investors in both economies early in the session. However, the Bloomberg platform reported that the current president's administration may be investigating Chinese subsidies and their impact on the U.S. economy, which had an impact on stocks reversing early gains. At the same time, according to Deutsche Bank: "the risk of a harsher capital market valuation correction is growing". On the economic data side, the index of prices paid by producers rose last month as supply and labor tensions put inflationary pressure on the economy. On the other hand, records show that U.S. wholesalers' inventory increased, although it highlights their low inventory-to-sales ratio, the lowest in seven years. On the stock side, Epic Games' antitrust lawsuit against Apple -3.31% hurt the tech giant's stock, issuing a permanent injunction against its App Store policies. Thus, DOW JONES -0.78%; S&P 500 -0.77%; NASDAQ -0.87% ended with losses.

Europe:

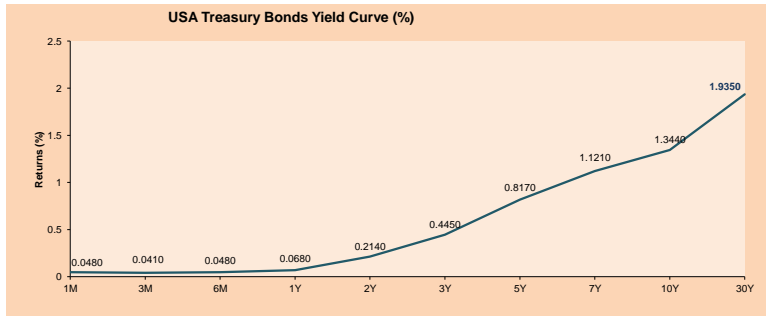
The main indices of the European continent ended the session with negative returns due to a fear of investors for a more restrictive monetary policy as the European Central Bank indicated that it will reduce its rate of buying bonds. The pan-European STOXX 600 -0.25% index closed the day with a negative performance, this being its fourth consecutive day in the field of losses. The most affected sectors of the session were Public Services -1.31%, Real Estate -1.31% and Communication Services -1.08%. The English market closed almost unchanged but in positive territory thanks to the fact that commodities continue with a positive trend, thus the sectors with the best returns were Materials +1.25%, Industrial +0.93% and Energy +0.27%. On the other hand, the French market also closed the day with losses thanks to the fear of an adjustment in the monetary measures of the ECB. Finally, the German market also closed almost unchanged, but in negative territory because the Industrial shares +1.13% and Technology +0.49% managed to contain the losses of the Communication Services -2.20% and Public Services -0.97% sectors. Thus, FTSE 100 +0.07%; CAC 40 -0.31%; DAX -0.09%; STOXX 600 -0.25% ended the day with negative returns.

Asia:

The main Asian indexes closed mostly with positive returns, thanks to the talks between China and the United States that have been classified as "sincere". Likewise, the rise in commodity prices and the hopes of a new government had a positive effect. In this way, the shares of China and Hong Kong end up on the rise, due to the conversation between Biden and Xi where they discuss avoiding conflicts between their economic competition. As a result, HK's tech stocks ended higher. On the other hand, Japanese stocks ended higher, as hopes that a new Japanese leader would compile an economic stimulus and secure an electoral victory pushed the price of the shares. On the other hand, the KOSPI index of South Korea registered gains, thanks to the recovery of the "Big Tech" and the Biden-Xi talks. Finally, Australian stocks closed higher as higher metal and oil prices boosted the Commodities sector. Thus, NIKKEI +1.25%; HANG SENG +1.91%; CSI 300 +0.88%; S & P / ASX 200 +0.50%; KOSPI +0.36% ended with positive returns.

ETFs

ETFs	Curr.	Close	1D	5D	30D	YTD	Exchange
SPDR S&P 500 ETF TRUST	USD	445.44	-0.79%	-1.69%	0.37%	19.14%	NYSE Arca
ISHARES MSCI EMERGING MARKET	USD	52.49	-0.11%	-1.19%	0.32%	1.59%	NYSE Arca
ISHARES IBOXX HIGH YLD CORP	USD	87.83	-0.15%	-0.20%	0.81%	0.61%	NYSE Arca
FINANCIAL SELECT SECTOR SPDR	USD	37.58	-0.74%	-1.29%	-3.14%	27.48%	NYSE Arca
VANECK GOLD MINERS ETF	USD	31.50	-1.44%	-5.35%	-3.55%	-12.55%	NYSE Arca
ISHARES RUSSELL 2000 ETF	USD	221.62	-0.98%	-2.78%	-0.93%	13.04%	NYSE Arca
SPDR GOLD SHARES	USD	167.18	-0.51%	-2.27%	1.94%	-6.27%	NYSE Arca
ISHARES 20+ YEAR TREASURY BO	USD	148.40	-0.88%	0.15%	1.31%	-5.92%	NASDAQ GM
INVESTCO QQQ TRUST SERIES 1	USD	376.59	-0.76%	-1.31%	2.83%	20.03%	NASDAQ GM
ISHARES BIOTECHNOLOGY ETF	USD	173.23	-0.37%	-1.47%	3.21%	14.35%	NASDAQ GM
ENERGY SELECT SECTOR SPDR	USD	47.79	-0.04%	-1.71%	-4.53%	26.09%	NYSE Arca
PROSHARES ULTRA VIX ST FUTUR	USD	23.88	5.53%	12.34%	0.51%	-77.60%	Close BZX
UNITED STATES OIL FUND LP	USD	48.80	2.20%	0.29%	1.04%	47.83%	NYSE Arca
ISHARES MSCI BRAZIL ETF	USD	34.60	-1.48%	-3.49%	-7.78%	-6.66%	NYSE Arca
SPDR S&P OIL & GAS EXP & PR	USD	83.67	-0.81%	-1.01%	0.44%	43.03%	NYSE Arca
UTILITIES SELECT SECTOR SPDR	USD	68.45	-1.40%	-1.50%	0.47%	9.17%	NYSE Arca
ISHARES US REAL ESTATE ETF	USD	107.05	-1.33%	-3.79%	0.96%	24.99%	NYSE Arca
SPDR S&P BIOTECH ETF	USD	131.72	-0.83%	-1.84%	4.82%	-6.44%	NYSE Arca
ISHARES IBOXX INVESTMENT GRA	USD	135.27	-0.29%	0.21%	0.96%	-2.07%	NYSE Arca
ISHARES J-P MORGAN USD EMERGI	USD	112.90	-0.32%	-0.25%	1.13%	-2.00%	NASDAQ GM
REAL ESTATE SELECT SECT SPDR	USD	46.85	-1.26%	-3.88%	1.25%	28.15%	NYSE Arca
ISHARES CHINA LARGE-CAP ETF	USD	41.57	0.07%	0.24%	-0.95%	-10.47%	NYSE Arca
CONSUMER STAPLES SPDR	USD	71.88	-0.43%	-1.30%	-0.10%	6.57%	NYSE Arca
VANECK JUNIOR GOLD MINERS	USD	40.91	-1.66%	-6.98%	-4.15%	-24.58%	NYSE Arca
SPDR BBO BARG HIGH YIELD BND	USD	109.71	-0.10%	-0.18%	0.81%	0.71%	NYSE Arca
VANGUARD REAL ESTATE ETF	USD	106.40	-1.48%	-4.08%	0.42%	25.28%	NYSE Arca
GRAYSCALE BITCOIN TRUST BTC	USD	36.80	-1.74%	-9.65%	-5.33%	15.00%	OTC US



Capital Market Laboratory Coordinator: Economist Bruno Bellido

Collaboration: Maria Camarena, Alonso García, Adrian Paredes y Jairo Valverde
email: pulsobursatil@ulima.edu.pe
facebook: www.facebook.com/pulsobursatil.ul

LIMA

Stocks

Ticker	Currency	Price	1D*	5D*	30D*	YTD*	Frequency	Volume (US\$)	Beta	Dividend Yield (%)	Price Earning	Market Cap. (M US\$)	Economic Sector*	Index Weight
▲ ALICORC1 PE**	S/.	4.85	0.08%	0.30%	3.35%	-8.49%	100.00%	33,051	1.00	17.22	9.98	1,008.72	Industrial	3.53%
▲ ATACOCB1 PE**	S/.	0.12	7.14%	23.71%	34.83%	-13.04%	60.00%	15,687	1.10	0.00	-	27.64	Mining	1.02%
- BACKUSH1 PE**	S/.	17.50	0.00%	3.55%	5.29%	-13.15%	70.00%	401	0.71	0.00	8.40	5,759.55	Industrial	0.82%
▼ BAP PE**	US\$	104.00	-0.57%	-0.42%	-0.81%	-35.24%	100.00%	278,679	1.18	0.00	-	9,815.76	Diverse	5.82%
▼ BVN PE**	US\$	7.04	-3.83%	-6.13%	-2.36%	-41.33%	95.00%	76,843	1.11	0.00	-	1,937.14	Mining	5.88%
▼ CASAGRC1 PE**	S/.	5.35	-4.46%	4.90%	35.79%	12.63%	95.00%	17,778	1.27	13.98	4.88	109.85	Agricultural	1.31%
- BBVAC1 PE**	S/.	1.69	0.00%	-0.59%	5.62%	-19.37%	80.00%	329,585	1.16	0.00	17.22	2,784.04	Finance	2.85%
▼ CORAREH1 PE**	S/.	1.12	-0.88%	5.66%	16.67%	25.84%	100.00%	32,690	1.25	21.32	2.22	334.48	Industrial	1.72%
▲ CPACASC1 PE**	S/.	4.58	2.69%	1.78%	-0.43%	-13.58%	100.00%	26,082	0.70	17.25	32.71	518.16	Industrial	2.38%
▲ CVERDEC1 PE**	US\$	16.75	1.52%	4.04%	19.64%	-19.93%	100.00%	47,317	1.39	3.41	7.49	5,863.44	Mining	5.25%
▼ ENGEPEC1 PE**	S/.	1.80	-2.70%	-10.00%	-23.66%	-24.05%	50.00%	55,951	0.68	18.48	7.93	1,051.05	Public Services	1.44%
- ENDISPC1**	S/.	3.20	0.00%	0.00%	-4.76%	-40.74%	35.00%	379	0.79	0.00	7.04	498.08	Public Services	0.98%
▲ FERREY1 PE**	S/.	1.68	0.60%	0.60%	14.29%	-3.45%	100.00%	30,601	1.16	10.84	5.22	399.54	Diverse	4.90%
- AENZAC1 PE**	S/.	1.29	0.00%	-7.86%	6.61%	-25.86%	85.00%	18,506	0.93	0.00	-	274.16	Diverse	4.05%
▲ IFS PE**	US\$	21.79	2.11%	1.35%	16.09%	-29.57%	90.00%	10,791	1.25	3.53	6.17	2,515.61	Diverse	7.22%
▲ INRETC1 PE**	US\$	30.00	5.63%	9.09%	-3.85%	-23.47%	90.00%	3,509,116	0.86	2.27	50.43	3,084.22	Diverse	5.28%
▲ LUSURC1 PE**	S/.	11.75	6.82%	11.37%	11.90%	-53.92%	60.00%	46,738	0.79	9.49	12.73	1,394.65	Public Services	1.81%
▲ MINSUR1 PE**	S/.	2.65	1.92%	1.92%	27.40%	43.24%	90.00%	42,625	0.99	12.61	3.22	1,862.22	Mining	3.09%
▲ PML PE**	US\$	0.12	4.55%	35.29%	35.29%	8.49%	40.00%	11,142	1.24	0.00	-	30.40	Mining	2.12%
▲ RELAPAC1 PE**	S/.	0.17	2.35%	2.96%	-7.94%	152.17%	100.00%	111,265	1.00	0.00	3.12	352.83	Industrial	2.12%
▲ SCCO PE**	US\$	63.15	3.95%	0.72%	-5.45%	-4.17%	75.00%	7,574	0.80	4.28	16.68	48,820.08	Mining	2.14%
▼ SIDERC1 PE**	S/.	1.10	-1.79%	1.85%	-15.84%	2.04%	100.00%	12,058	0.90	45.13	2.87	187.69	Industrial	1.43%
▲ TV PE**	US\$	0.16	6.58%	10.20%	10.20%	10.20%	75.00%	1,296	1.21	0.00	-	160.23	Mining	2.93%
▲ UNACEMC1 PE**	S/.	1.43	0.70%	2.14%	27.68%	-7.74%	100.00%	44,460	1.27	3.22	11.29	633.73	Industrial	3.00%
▲ VOLCABC1 PE**	S/.	0.61	8.93%	17.31%	61.38%	17.31%	100.00%	2,848,564	1.78	0.00	-	606.13	Mining	5.90%
▲ NEXAPEC1 PE**	S/.	2.78	11.20%	-4.47%	12.55%	-1.77%	50.00%	90,840	1.14	0.00	7.58	902.02	Mining	1.56%

Quantity of shares: 26
 Source: Bloomberg, Económica
 * Bloomberg Industry Classification System
 ** PER is used in the stock market and original currency of the instrument
 *Legend: Variation 1D: 1 Day; 5D: 5 Days; 1M: 1 Month; YTD: Var.% 12/31/20 to date

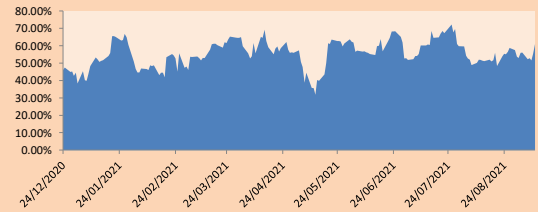
Sectorial Indices

	Close	1D*	5D*	30D*	YTD*	Beta
▲ S&P/BVLMining	390.07	2.57%	0.44%	-0.34%	0.03%	0.79
▲ S&P/BVLConsumer	938.69	3.17%	2.56%	4.26%	-13.77%	0.84
▲ S&P/BVLIndustrials	189.34	0.88%	0.64%	12.02%	-0.64%	0.98
▼ S&P/BVLFinancials	772.31	-0.25%	-0.09%	0.94%	-25.30%	1.12
▲ S&P/BVLConstruction	202.11	0.96%	0.60%	11.84%	-3.35%	0.90
▼ S&P/BVLPublicSvcs	476.90	-0.93%	-3.72%	-2.85%	-22.34%	0.39
▼ S&P/BVLElectricUtil	465.57	-0.93%	-3.72%	-2.85%	-22.34%	0.39

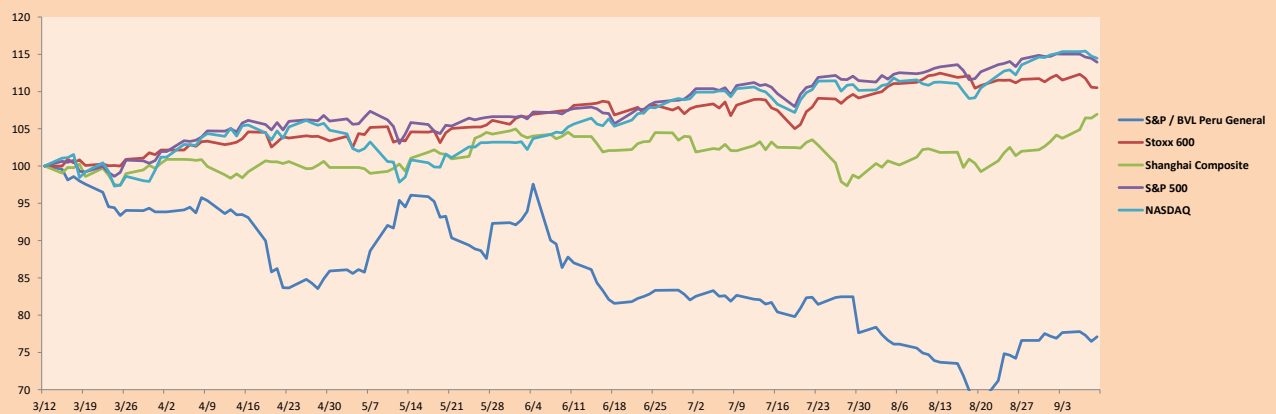
S&P/BVLConstructionTRPEN

*Legend: Variation 1D: 1 Day; 5D: 5 Days; 1M: 1 Month; YTD: Var.% 12/31/20 to date

Correlation Graph of Returns of Mining Index against Metallic Index of London (3 months)



Indices (6 months)



Base: 12/03/21=100
 Source: Bloomberg

Capital Market Laboratory Coordinator: Economist Bruno Bellido
 Collaboration: Maria Camarena, Alonso García, Adrían Paredes y Jairo Valverde
 email: pulsohorsatil@ulima.edu.pe
 facebook: www.facebook.com/pulsohorsatil.ul

SOVEREIGN RATING

RISK RATINGS

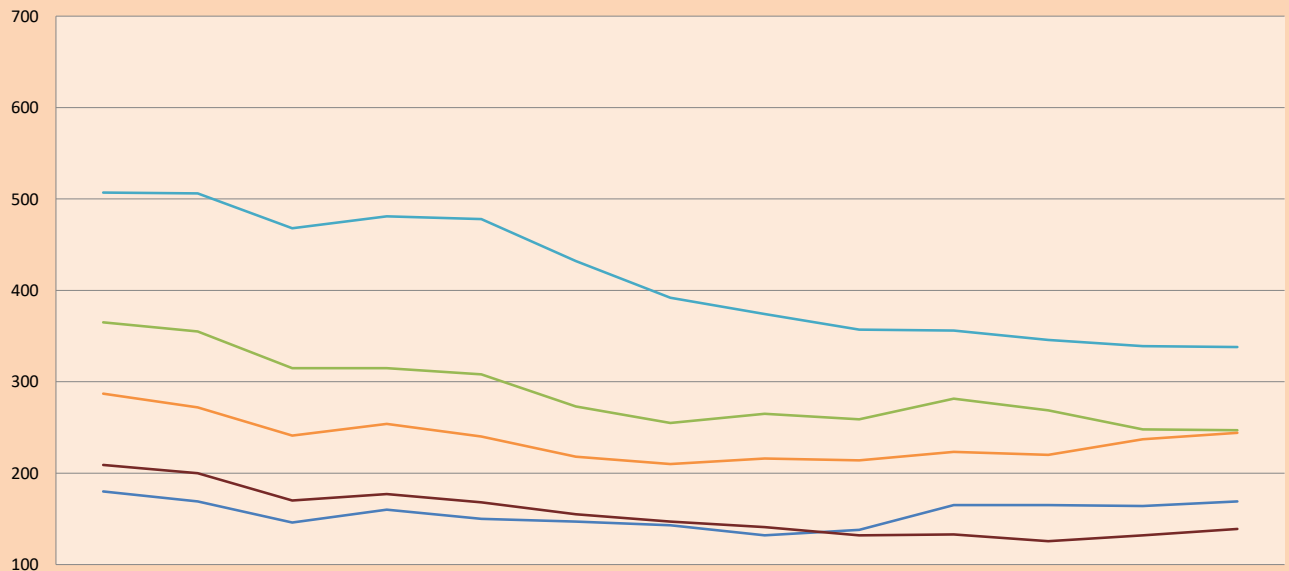
Moody's	S&P	Fitch	
Aaa	AAA	AAA	Prime
Aa1	AA+	AA+	High credit quality
Aa2	AA	AA	
Aa3	AA-	AA-	
A1	A+	A+	Medium-high grade, with low credit risk
A2	A	A	
A3	A-	A-	
Baa1	BBB+	BBB+	Moderate Credit Risk
Baa2	BBB	BBB	
Baa3	BBB-	BBB-	
Ba1	BB+	BB+	It has speculative elements and it is subject to substantial credit risk
Ba2	BB	BB	
Ba3	BB-	BB-	
B1	B+	B+	It is considered speculative and it has high credit risk
B2	B	B	
B3	B-	B-	
Caa1	CCC+		Bad credit conditions and it is subject to high credit risk
Caa2	CCC		
Caa3	CCC-		
Ca	CC		Very close to default or in default
	C		
C	D		

Source: Bloomberg

Latin America Credit Rating			
Clasificadora de riesgo			
Country	Moody's	Fitch	S&P
Peru	Baa1	BBB+	BBB+
México	Ba2	BB-	BB-
Venezuela	C	WD	SD
Brazil	Ba2	BB-	BB-
Colombia	Baa2	BB+	BB+
Chile	A1	A-	A
Argentine	Ca	WD	CCC+
Panama	Baa2	BBB-	BBB

Source: Bloomberg

LATAM Country Risk (bps)



	Jun-20	Jul-20	Ago-20	Set-20	Oct-20	Nov-20	Dic-20	Ene-21	Feb-21	Mar-21	Abr-21	May-21	Jun-21
Perú	180	169	146	160	150	147	143	132	138	165	165	164	169
Brasil	365	355	315	315	308	273	255	265	259	281	269	248	247
México	507	506	468	481	478	432	392	374	357	356	346	339	338
Colombia	287	272	241	254	240	218	210	216	214	223	220	237	244
Chile	209	200	170	177	168	155	147	141	132	133	126	132	139

Source: BCRP

Capital Market Laboratory Coordinator: Economist Bruno Bellido
Collaboration: María Camarena, Alonso García, Adrian Paredes y Jairo Valverde
email: pulsobursatil@ulima.edu.pe
facebook: www.facebook.com/pulsobursatil.ul