

PULSO BURSÁTIL

FACULTAD DE CIENCIAS EMPRESARIALES Y ECONÓMICAS
CARRERA DE ECONOMÍA
LABORATORIO DE MERCADO DE CAPITALES

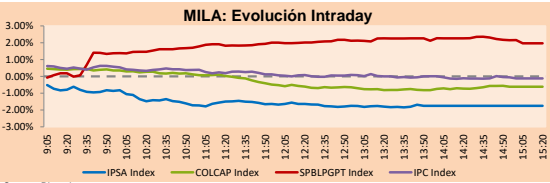


MILA

Lima, Sep 13, 2021

Main Indexes	Close	1 D	5 D	1 M	YTD	Cap. Burs. (US\$ bill)
▼ IPSA (Chile)	4,401.31	-1.40%	-1.23%	-0.01%	5.36%	111.70
▼ IGPA (Chile)	22,009.13	-1.25%	-1.12%	0.22%	4.77%	131.82
▼ COLSC (Colombia)	961.97	-0.74%	0.18%	2.58%	-9.16%	4.56
▼ COLCAP (Colombia)	1,312.43	-0.61%	-1.10%	3.44%	-8.73%	76.00
▲ S&P/BVL (Perú)*	18,063.66	1.97%	1.98%	7.71%	-13.25%	85.26
▲ S&P/BVL SEL (Perú)	476.48	1.63%	2.49%	8.06%	-13.59%	76.83
▲ S&P/BVL LIMA 25	24,503.55	1.42%	2.82%	13.44%	-2.76%	84.56
▼ IPC (México)	51,496.71	-0.05%	-1.50%	0.01%	16.86%	319.37
▼ S&P MILA 40	464.58	-0.45%	-1.88%	0.60%	-13.10%	6,346.57

*Legend: Variation 1D: 1 day; 5D: 5 days; 1M: 1 Month; YTD: Var% 12/31/20 to date

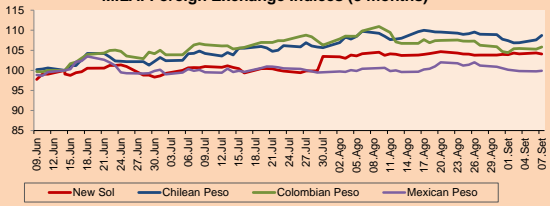


Source: Bloomberg

Currency	Price	1D*	5D*	30 D*	YTD*
▲ Sol (PEN)	4,106.00	0.08%	0.09%	0.69%	13.49%
▼ Chilean Peso (CLP)	785.13	-0.44%	1.60%	1.21%	10.31%
▼ Colombian Peso (COP)	3,833.47	-0.14%	1.03%	-0.34%	11.77%
▼ Mexican Peso (MXN)	19.87	-0.10%	-0.21%	-0.04%	-0.21%

*Legend: Variation 1D: 1 day; 5D: 5 days; 1M: 1 Month; YTD: Var% 12/31/20 to date

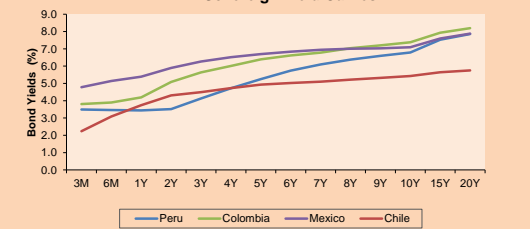
MILA: Foreign Exchange Indices (3 months)



Base: 14/06/21=100
Source: Bloomberg

Fixed Income	Currency	Price	Bid Yield (%)	Ask Yield (%)	Duration
PERU 7.35 07/21/25	USD	122.339	1.44	1.31	3.43
PERU 4.125 08/25/27	USD	112.672	1.91	1.81	5.36
PERU 8.75 11/21/33	USD	157.895	3.07	2.99	8.52
PERU 6.55 03/14/37	USD	138.97	3.35	3.28	10.37
PERU 5.625 11/18/2050	USD	140.01	3.46	3.42	16.59
CHILE 2.25 10/30/22	USD	102.096	0.58	0.18	1.11
CHILE 3.125 01/21/26	USD	107.734	1.35	1.23	4.10
CHILE 3.625 10/30/42	USD	108.254	3.12	3.06	15.17
COLOM 11.85 03/09/28	USD	156.802	2.52	2.19	5.06
COLOM 10.375 01/28/33	USD	149.212	4.80	4.66	7.60
COLOM 7.375 09/18/37	USD	128.927	4.80	4.74	10.06
COLOM 6.125 01/18/41	USD	116.297	4.85	4.79	12.00
MEX 4 10/02/23	USD	116.297	4.848	4.792	12
MEX5.55 01/45	USD	122.412	4.08	4.03	14.22

MILA: Sovereign Yield Curves



Source: Bloomberg

Equity

Largest gains	Exchange	Currency	Price	▲%
INRETAIL PERU CO	Peru	USD	31.85	6.17
BUENAVENTURA-ADR	Peru	USD	7.34	4.26
CREDECORP LTD	Peru	USD	107.30	3.17
GRUPO BIMBO-A	Mexico	MXN	51.34	2.05
ANDINA-PREF B	Chile	CLP	1835.00	1.93

Per Turnover

	Exchange	Amount (US\$)
WALMART DE MEXIC	Mexico	69,645,486
AMERICA MOVIL-L	Mexico	29,205,527
GRUPO F BANORT-O	Mexico	29,156,504
SOQUIMICH-B	Chile	28,094,074
GRUPO MEXICO-B	Mexico	22,286,439

Largest losses	Exchange	Currency	Price	▼%
CENCOSUD SHOPPIN	Chile	CLP	993	-3.59
CMPC	Chile	CLP	1635	-3.25
SOQUIMICH-B	Chile	CLP	42964	-3.02
CEVERZAS	Chile	CLP	7449	-3.00
ENTEL	Chile	CLP	3660.5	-2.94

Per Volume

	Exchange	Volume
BANCO SANTANDER	Chile	197,673,522
BANCO DE CHILE	Chile	59,119,883
ENEL CHILE SA	Chile	58,864,465
ITAU CORPBANCA	Chile	38,012,389
AMERICA MOVIL-L	Mexico	30,708,931

MILA

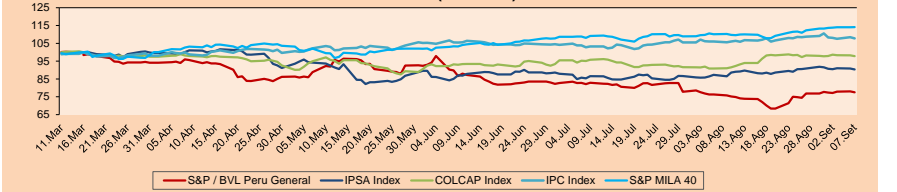
Peru: The General Index of the BVL ended today's session with a positive result of 1.97%. The index maintains an accumulated negative annual trend of -13.25% in local, where the adjusted yield in dollars amounts to -23.56%. Then, the S&P / BVL Peru SEL varied by 1.63% while the S&P / BVL LIMA 25 by 1.42%. The PEN spot reached S / 4,106.00. Headline: Dollar closed at S / 4,107, its highest level in more than three weeks

Chile: The IPSA index ended the day with a negative return of -1.40%. The sectors that benefited the least from the conference were Communication Services (-2.94%) and Materials (-2.88%). The worst performing stocks were CIA Cervercerias Unidas SA (-3.59%) and Banco de Chile (-3.25%). Headline: CorpGroup Bond Still Hit After US Reorganization

Colombia: The COLCAP index ended the day with a negative return of -0.61%. The sectors that benefited the least from the session were First Needs Products (-1.84%) and Finance (-1.56%). The worst performing stocks were Grupo Bolivar SA (+4.26%) and Grupo de Inv. South American (-2.56%). Headline: DNP projects that the Colombian economy will grow 7.5% this year

Mexico: The IPC index closed the day with a negative return of -0.05%. The sectors that benefited the least from the conference were Health (-1.14%) and Materials (-1.13%). The worst performing stocks were Grupo México SAB de CV (-1.69%) and Grupo Financiero Inbursa-O (-1.39%). Headline: Electricity rises in winter due to high natural gas costs

MILA: Stock Indices (6 months)

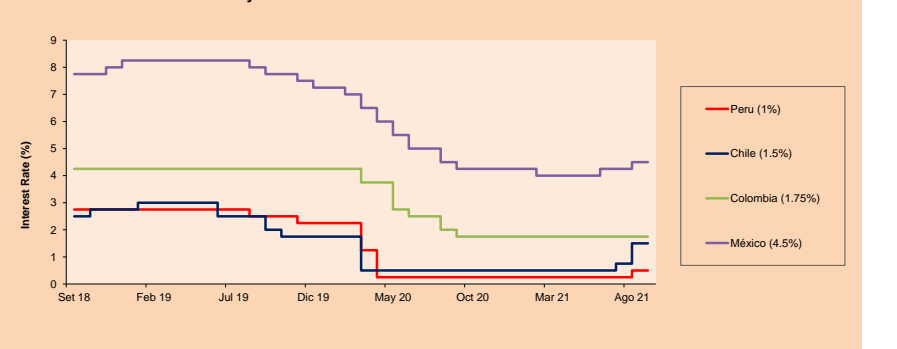


Base: 11/03/21=100
Source: Bloomberg

ETFs

	Curr.	Close	1D	5D	30 D	YTD	Exchange
▼ iShares MSCI All Peru Caped Index Fund	USD	27.17	-0.77%	1.49%	2.34%	-21.66%	NYSE Arca
▼ iShares MSCI All Chile Caped Index Fund	USD	27.47	-0.90%	-3.92%	-1.79%	-9.07%	Cboe BZX
▼ Global X MSCI Colombia	USD	10.035	-0.26%	-2.24%	2.80%	-11.66%	NYSE Arca
▲ iShares MSCI Mexico Capped	USD	50.17	0.32%	-0.30%	1.17%	16.70%	NYSE Arca
▲ iShares MSCI Emerging Markets	USD	52.63	0.27%	-0.92%	1.74%	1.86%	NYSE Arca
▲ Vanguard FTSE Emerging Markets	USD	52.7	0.32%	-0.36%	2.55%	5.17%	NYSE Arca
▲ iShares Core MSCI Emerging Markets	USD	64.39	0.31%	-0.83%	1.85%	3.79%	NYSE Arca
▲ iShares JP Morgan Emerging Markets Bonds	USD	64.1	0.28%	-0.31%	2.53%	4.94%	Cboe BZX
▲ Morgan Stanley Emerging Markets Domestic	USD	6.3	0.32%	0.96%	2.11%	0.16%	New York

MILA: Policy Rate



Source: Bloomberg

Capital Market Laboratory Coordinator: Economist Bruno Bellido
Collaboration: María Camarena, Alonso García, Adrian Paredes y Jairo Valverde
email: pulsobursatil@ulima.edu.pe
facebook: www.facebook.com/pulsobursatil.ul

The content of this document is just for informational purposes. The information and opinions expressed should not be considered as recommendations for future decisions. Under any circumstances, the Capital Market Laboratory of University of Lima will be responsible for the use of the statements in this document.

WORLD

Main Indices	Close	1 D*	5 D*	1 M*	YTD*	Market Cap. (US\$ Mill.)
▲ Dow Jones (USA)	34,869.63	0.76%	-1.41%	-1.82%	13.93%	10,863,910
▲ Standard & Poor's 500 (EEUU)	4,468.73	0.23%	-1.47%	0.02%	18.97%	39,421,915
▲ NASDAQ Composite (USA)	15,105.58	-0.07%	-1.68%	1.91%	17.20%	25,489,427
▲ Stoxx EUROPE 600 (Europe)	467.69	0.29%	-1.58%	-1.71%	17.21%	10,997,843
▲ DAX (Germany)	15,701.42	0.59%	-1.45%	-1.73%	14.45%	1,186,615
▲ FTSE 100 (United Kingdom)	7,068.43	0.56%	-1.65%	-2.08%	9.41%	1,462,330
▲ CAC 40 (France)	6,676.93	0.20%	-0.99%	-3.18%	20.27%	1,871,682
▲ IBEX 35 (Spain)	8,816.10	1.39%	-0.75%	-2.04%	9.20%	500,099
▼ MSCI AC Asia Pacific Index	205.64	-0.47%	-0.46%	2.89%	2.86%	26,733,066
▼ HANG SENG (Hong kong)	25,813.81	-1.50%	-1.34%	-2.19%	-5.20%	3,962,396
▲ SHANGHAI SE Comp. (China)	3,715.37	0.33%	2.56%	5.66%	6.98%	7,408,053
▲ NIKKEI 225 (Japan)	30,447.37	0.22%	2.65%	8.83%	10.94%	4,178,555
▲ S&P/ASX 200 (Australia)	7,425.21	0.25%	-1.37%	-3.03%	12.31%	1,753,327
▼ KOSPI (South Korea)	3,127.86	-0.05%	-1.50%	-0.91%	9.36%	1,857,349

*Legend: Variation 1D: 1 Day; 5D: 5 Days; 1M: 1 Month; YTD: Var. % 12/31/20 to date

Equity

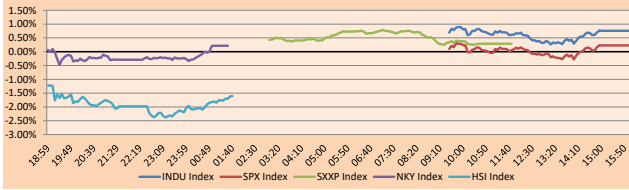
Germany (Stocks from DAX Index)

Largest gains	Curr.	Price	▲ %	Exchange	Largest losses	Curr.	Price	▼ %	Exchange
DAI GY	EUR	71.7	3.70	Xetra	IFX GY	EUR	37.09	-0.91	Xetra
BMW GY	EUR	81.63	3.13	Xetra	MRK GY	EUR	202.1	-0.88	Xetra
DBK GY	EUR	11.052	2.22	Xetra	DBI GY	EUR	142.2	-0.56	Xetra
ENR GY	EUR	23.27	2.15	Xetra	ADS GY	EUR	297.45	-0.54	Xetra

Europe (Stocks from STOXX EUROPE 600)

Largest gains	Curr.	Price	▲ %	Exchange	Largest losses	Curr.	Price	▼ %	Exchange
LUNE SS	SEK	273.6	4.35	Stockholm	EVO SS	SEK	1390	-5.55	Stockholm
VWS DC	DKK	260.8	4.32	Copenhagen	ADE NO	NOK	159.2	-5.35	Oslo
ACS SQ	EUR	23.4	4.00	Soc.Bol SIBE	DIA IM	EUR	196.7	-4.61	Borsa Italiana
COL SQ	EUR	8.735	3.93	Soc.Bol SIBE	SRT3 GY	EUR	565	-4.59	Xetra

Global Markets: Intraday Evolution (var %)

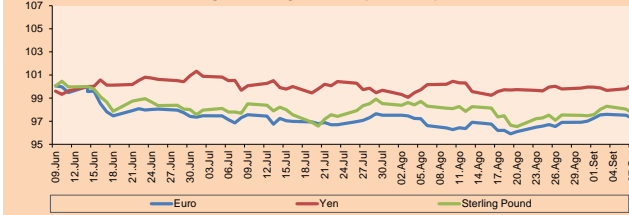


Source: Bloomberg

Currency	Price	1 D*	5 D*	1 M*	YTD*
▼ Euro	1.1811	-0.03%	-0.50%	0.12%	-3.32%
▲ Yen	109.9900	0.05%	0.12%	0.36%	6.53%
▲ Sterling Pound	1.3838	-0.01%	0.01%	-0.20%	1.23%
▲ Yuan	6.4518	0.12%	-0.10%	-0.40%	-1.16%
▲ Hong Kong Dollar	7.7801	0.03%	0.08%	-0.04%	0.35%
▼ Brazilian Real	5.2158	-0.59%	0.89%	-0.61%	0.33%
▼ Argentine Peso	98.1850	0.09%	0.24%	1.11%	16.68%

*Legend: Variation 1D: 1 Day; 5D: 5 Days; 1M: 1 Month; YTD: Var. % 12/31/20 to date

Foreign Exchange Indices (3 months)

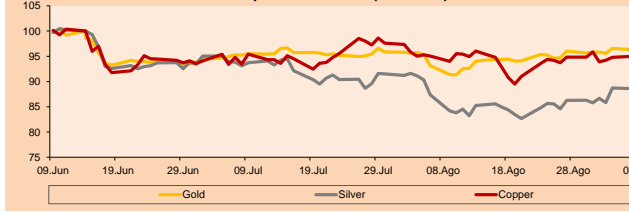


Base: 14/06/21=100
Source: Bloomberg

Commodities	Close	1 D*	5 D*	1 M*	YTD*
▲ Oro (US\$ Oz. T) (LME)	1,793.75	0.35%	-1.62%	0.79%	-5.51%
▼ Plata (US\$ Oz. T) (LME)	23.74	-0.02%	-3.82%	-0.05%	-10.09%
▼ Cobre (US\$ TM) (LME)	3,668.50	-1.38%	1.16%	0.08%	23.25%
▲ Zinc (US\$ TM) (LME)	3,068.50	-1.30%	2.41%	1.39%	12.43%
▲ Petróleo WTI (US\$ Barril) (NYM)	70.45	1.05%	1.67%	3.28%	46.74%
▲ Estano (US\$ TM) (LME)	34,243.00	-0.36%	2.77%	-4.24%	66.68%
▲ Plomo (US\$ TM) (LME)	2,295.25	-1.85%	-2.62%	-5.44%	16.17%
▲ Azúcar #11 (US\$ Libra) (NYB-ICE)	19.69	0.92%	-3.10%	-4.04%	37.98%
▲ Cacao (US\$ TM) (NYB-ICE)	2,637.00	1.31%	-0.64%	0.65%	5.40%
▼ Café Arábica (US\$ TM) (NYB-ICE)	186.80	-0.66%	-3.21%	0.57%	38.58%

*Leyenda: Variación 1D: 1 Día; 5D: 5 Días; 1M: 1 Mes; YTD: Var. % 31/12/20 a la fecha

Principal Metals Index (3 months)



Base: 14/06/21=100
Source: Bloomberg

Global Overview:

United States:

Major US indexes closed the day with slightly mixed returns as investors focused on potential corporate tax increases and pending the next economic data. In this way, the S&P 500 rises from a 5-day losing streak. Also, the Dow ended higher while the Nasdaq fell. On the other hand, the market is pending the probable approval of the budget package of 3.5 trillion dollars from President Joe Biden, in which a rise in the corporate tax rate is expected to 26.5%. Additionally, the Labor Department should release consumer price index data tomorrow, which may clarify whether inflation is as transitory as the Federal Reserve emphasizes. Other key indicators for this week are retail sales and consumer confidence, which will show how much demand has increased knowing that it has been affected by the Delta coronavirus variant. Lastly, in relation to stocks, Moderna -6.6% and Pfizer -2.2% fell after experts said that the reinforcement of COVID vaccines was not very necessary. Thus, DOW JONES + 0.76%; S&P 500 + 0.23%; NASDAQ -0.07% ended the day with mixed results.

Europe:

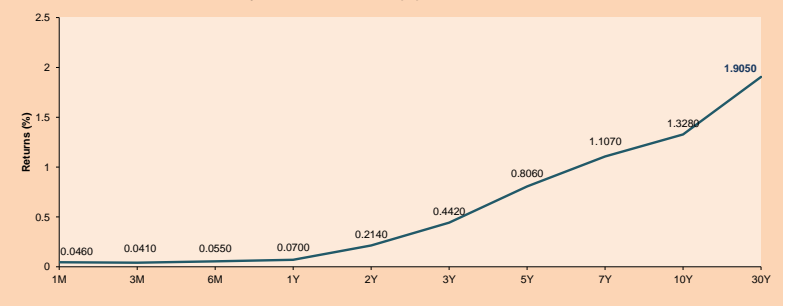
The main indexes on the European continent ended the session higher, breaking a four-day losing streak at the close. The indices reflected confidence in a strong economic recovery in the Eurozone, ignoring previous data of a global slowdown. On the other hand, traders have their eyes on the US consumer price index, which will be presented this week. Thus, the pan-European STOXX 600 index closed higher, recovering from last week's decline. Oil stocks, banks and utilities rallied the most on the day. European investors continued to digest the European Central Bank's decision to slow bond purchases, while noting the rise in medium-term inflation forecasts. In the United Kingdom, the British index closed higher, recovering its losses from the previous week. Stocks benefited from the 6-week high in oil prices. Similarly, the price of aluminum rose to a 13-year high. In Germany, the DAX index closed higher, overcoming negative data on its inflation rate, which in August reached its highest level since October 1974. Stocks benefited from the increase in oil and gas shares. In France, stocks closed higher, despite losing some early gains as growth prospects were monitored. Thus, FTSE 100 +0.56%; CAC 40 +0.20%; DAX +0.59%; STOXX 600 +0.29% ended the day with positive performances.

Asia:

The main indexes on the Asian continent ended the session mixed. In China, stocks were dragged down with internet giants following a series of measures by Beijing to crack down on the technology sector. After China's Ministry of Industry asked them yesterday to stop blocking links on their platforms that lead to competitors. Due to this Meituan - 6.3%; Alibaba - 4.5%; Tencent - 3.7% closed with losses. On the other hand, Japan's NIKKEI closed higher on expectations of economic stimulus after Kono, emerged as the favorite to become the next leader of the Liberal Democratic Party. In individual stocks, Toyota posted losses after its announcement on Friday of a further cut in global production due to the persistence of COVID-19 and the lack of Chips. Finally, the main Australian index closed slightly higher driven by the Friday +1.25%; Materials +1.00% sectors. Thus, NIKKEI +0.22%; HANG SENG -1.50%; CSI 300 -0.44%; S&P/ASX 200 +0.25%; SHANGHAI COMPOSITE +0.33%; KOSPI +0.07% closed the session with mixed results.

ETFs	Curr.	Close	1D	5D	30 D	YTD	Exchange
SPDR S&P 500 ETF TRUST	USD	446.58	0.26%	-1.43%	0.15%	19.44%	NYSE Arca
ISHARES MSCI EMERGING MARKET	USD	52.63	0.27%	-0.92%	1.74%	1.86%	NYSE Arca
ISHARES IBOXX HIGH YLD CORP	USD	88.05	0.25%	0.05%	0.67%	0.86%	NYSE Arca
FINANCIAL SELECT SECTOR SPDR	USD	38.01	1.14%	-0.16%	-1.48%	28.93%	NYSE Arca
VANECK GOLD MINERS ETF	USD	32.11	1.94%	-3.52%	-2.16%	-10.86%	NYSE Arca
ISHARES RUSSELL 2000 ETF	USD	222.88	0.57%	-2.23%	0.79%	13.68%	NYSE Arca
SPDR GOLD SHARES	USD	167.74	0.33%	-1.94%	0.81%	-5.95%	NYSE Arca
ISHARES 20+ YEAR TREASURY BO	USD	149.30	0.61%	0.76%	0.50%	-5.34%	NASDAQ GM
INVESCO QQQ TRUST SERIES 1	USD	376.33	-0.07%	-1.37%	2.04%	19.95%	NASDAQ GM
ISHARES BIOTECHNOLOGY ETF	USD	170.32	-1.68%	-3.12%	0.54%	12.43%	NASDAQ GM
ENERGY SELECT SECTOR SPDR	USD	49.16	2.87%	1.11%	-0.53%	29.71%	NYSE Arca
PROSHARES ULTRA VIX ST FUTUR	USD	22.57	-5.41%	6.29%	-1.95%	-78.81%	Close BZX
UNITED STATES OIL FUND LP	USD	49.48	1.39%	1.69%	4.32%	49.89%	NYSE Arca
ISHARES MSCI BRAZIL ETF	USD	35.35	2.17%	-1.39%	-4.43%	-4.64%	NYSE Arca
SPDR S&P OIL & GAS EXP & PR	USD	87.12	4.12%	3.08%	8.59%	48.92%	NYSE Arca
UTILITIES SELECT SECTOR SPDR	USD	68.33	-0.18%	-1.67%	-0.51%	8.98%	NYSE Arca
ISHARES US REAL ESTATE ETF	USD	107.48	0.40%	-3.41%	0.40%	25.49%	NYSE Arca
SPDR S&P BIOTECH ETF	USD	131.08	-0.49%	-2.32%	5.18%	-6.89%	NYSE Arca
ISHARES IBOXX INVESTMENT GRA	USD	135.60	0.24%	0.45%	0.38%	-1.83%	NYSE Arca
ISHARES JP MORGAN US EMERGI	USD	113.05	0.13%	-0.11%	0.65%	-2.47%	NASDAQ GM
REAL ESTATE SELECT SECT SPDR	USD	47.11	0.55%	-3.32%	0.79%	28.86%	NYSE Arca
ISHARES CHINA LARGE-CAP ETF	USD	41.48	-0.22%	0.02%	0.31%	-10.66%	NYSE Arca
CONSUMER STAPLES SPDR	USD	72.06	0.25%	-1.06%	-0.62%	6.83%	NYSE Arca
VANECK JUNIOR GOLD MINERS	USD	42.37	3.57%	-3.66%	-1.12%	-21.88%	NYSE Arca
SPDR BBG BARC HIGH YIELD BND	USD	109.97	0.24%	0.05%	0.74%	0.95%	NYSE Arca
VANGUARD REAL ESTATE ETF	USD	107.12	0.68%	-3.43%	0.34%	26.13%	NYSE Arca
GRAYSCALE BITCOIN TRUST BTC	USD	35.73	-2.91%	-12.28%	-6.88%	11.66%	OTC US

USA Treasury Bonds Yield Curve (%)



Source: Bloomberg

Capital Market Laboratory Coordinator: Economist Bruno Bellido
Collaboration: María Camarena, Alonso García, Adrian Paredes y Jairo Valverde
email: pulsohorsatil@ulima.edu.pe
facebook: www.facebook.com/pulsohorsatil

LIMA

Stocks

#####	Ticker	Currency	Price	1D*	5D*	30D*	YTD*	Frequency	Volumen (US\$)	Beta	Dividend Yield (%)	Price Earning	Market Cap. (M US\$)	Economic Sector*	Index Weight
	ALICORC1 PE**	US\$	4.80	#¡VALOR!	#¡VALOR!	#¡VALOR!	#¡VALOR!	100.00%	517,360	requesting	17.40	Requesting	4,096.07	Industrial	3.53%
▲	ATACOCB1 PE**	US\$	0.12	1.67%	22.00%	37.08%	-11.59%	52.63%	15,360	requesting	0.00	Requesting	115.27	Mining	1.02%
-	BACKUSI1 PE**	US\$	17.50	0.00%	3.55%	5.29%	-13.15%	78.95%	18,988	requesting	5.34	Requesting	23,629.14	Industrial	0.82%
▲	BAP PE**	US\$	107.30	3.17%	3.17%	5.42%	-33.19%	100.00%	163,239	requesting	0.00	-	10,127.22	Diverse	5.82%
▲	BVN PE**	US\$	7.34	4.26%	-2.13%	1.10%	-38.83%	89.47%	15,750	requesting	0.00	-	2,019.69	Mining	5.88%
▲	CASAGRC1 PE**	US\$	5.46	2.06%	6.02%	38.58%	14.95%	89.47%	31,176	requesting	13.70	Requesting	459.92	Agricultural	1.31%
-	BBVAC1 PE**	US\$	1.69	0.00%	-0.59%	6.96%	-19.37%	84.21%	24,008	requesting	2.58	Requesting	11,421.81	Finance	2.85%
-	CORAREI1 PE**	US\$	1.12	0.00%	4.67%	17.89%	25.84%	100.00%	2,280	requesting	0.00	Requesting	1,372.22	Industrial	1.72%
▲	CPACASC1 PE**	US\$	4.60	0.44%	2.22%	0.00%	-13.21%	94.74%	298,632	requesting	17.17	Requesting	2,135.08	Industrial	2.38%
▼	CVERDEC1 PE**	US\$	16.74	-0.06%	3.85%	17.89%	-19.98%	100.00%	11,160	requesting	3.41	Requesting	5,859.94	Mining	5.25%
▼	ENGEPEC1 PE**	US\$	1.79	-0.56%	-10.50%	-17.01%	-24.47%	47.37%	218,032	requesting	18.59	Requesting	4,288.07	Public Services	1.44%
▲	ENDISPC1**	US\$	3.80	18.75%	18.75%	13.10%	-29.63%	47.37%	26,942	requesting	4.49	Requesting	2,426.54	Public Services	0.98%
▲	FERREYC1 PE**	US\$	1.70	1.19%	2.41%	11.84%	-2.30%	100.00%	462,844	requesting	10.71	Requesting	1,658.66	Diverse	4.90%
▲	AENZAC1 PE**	US\$	1.35	4.65%	-3.57%	19.47%	-22.41%	84.21%	71,640	requesting	0.00	Requesting	1,177.09	Diverse	4.05%
▲	IFS PE**	US\$	22.40	2.80%	3.94%	19.47%	-27.60%	89.47%	8,034	requesting	3.44	Requesting	2,586.03	Diverse	7.22%
▲	INRETC1 PE**	US\$	31.85	6.17%	15.82%	5.85%	-18.75%	89.47%	3,601,679	requesting	2.14	Requesting	3,274.41	Diverse	5.28%
▼	LUSURC1 PE**	US\$	11.60	-1.28%	9.95%	10.48%	-54.51%	63.16%	7,417	requesting	9.61	Requesting	5,648.64	Public Services	1.81%
▲	MINSURI1 PE**	US\$	2.68	1.13%	-0.74%	34.00%	44.86%	89.47%	670,000	requesting	12.47	Requesting	7,726.45	Mining	3.09%
-	PML PE**	US\$	0.12	0.00%	35.29%	35.29%	8.49%	31.58%	15,033	requesting	0.00	-	30.40	Mining	2.12%
-	RELAPAC1 PE**	US\$	0.18	0.57%	3.55%	6.06%	153.62%	100.00%	270,148	requesting	0.00	Requesting	1,455.86	Industrial	2.12%
▼	SCCO PE**	US\$	61.39	-2.79%	-2.09%	-8.35%	-6.84%	73.68%	34,591	requesting	4.40	Requesting	47,459.46	Mining	2.14%
-	SIDERC1 PE**	US\$	1.10	0.00%	1.85%	-15.84%	2.04%	94.74%	82,170	requesting	45.13	Requesting	770.00	Industrial	1.43%
▼	TV PE**	US\$	0.15	-6.79%	-0.66%	-7.93%	2.72%	73.68%	67,193	requesting	0.00	-	149.35	Mining	2.93%
-	UNACEMC1 PE**	US\$	1.43	0.00%	2.14%	27.68%	-7.74%	100.00%	133,007	requesting	3.22	Requesting	2,599.92	Industrial	3.00%
-	VOLCABC1 PE**	US\$	0.61	0.00%	17.31%	72.32%	17.31%	100.00%	641,035	requesting	0.00	Requesting	2,486.71	Mining	5.90%
▲	NEXAPEC1 PE**	US\$	2.90	4.32%	-0.34%	17.41%	2.47%	36.84%	16,917	requesting	0.00	Requesting	3,860.38	Mining	1.56%

Quantity of shares: 26
 Source: Bloomberg, Economática
 * Bloomberg Industry Classification System
 ** PER is used in the stock market and original currency of the instrument
 *Legend: Variation 1D: 1 Day; 5D: 5 Days, 1M: 1 Month; YTD: Var.% 12/31/20 to date

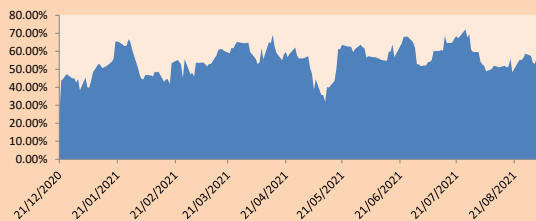
Sectorial Indices

	Close	1D*	5D*	30D*	YTD*	Beta
▼ #¡VALOR!	386.67	-0.87%	-0.86%	-0.90%	-0.84%	0.78
▲ #¡VALOR!	964.96	2.80%	5.23%	7.56%	-11.36%	0.84
▲ #¡VALOR!	191.27	1.02%	1.60%	13.45%	0.37%	0.98
▲ #¡VALOR!	796.17	3.09%	3.12%	7.28%	-22.99%	1.12
▲ #¡VALOR!	204.04	0.95%	1.19%	14.44%	-2.43%	0.90
▲ #¡VALOR!	491.61	3.08%	0.16%	3.72%	-19.95%	0.39
▲ #¡VALOR!	479.94	3.09%	0.16%	3.72%	-19.95%	0.39

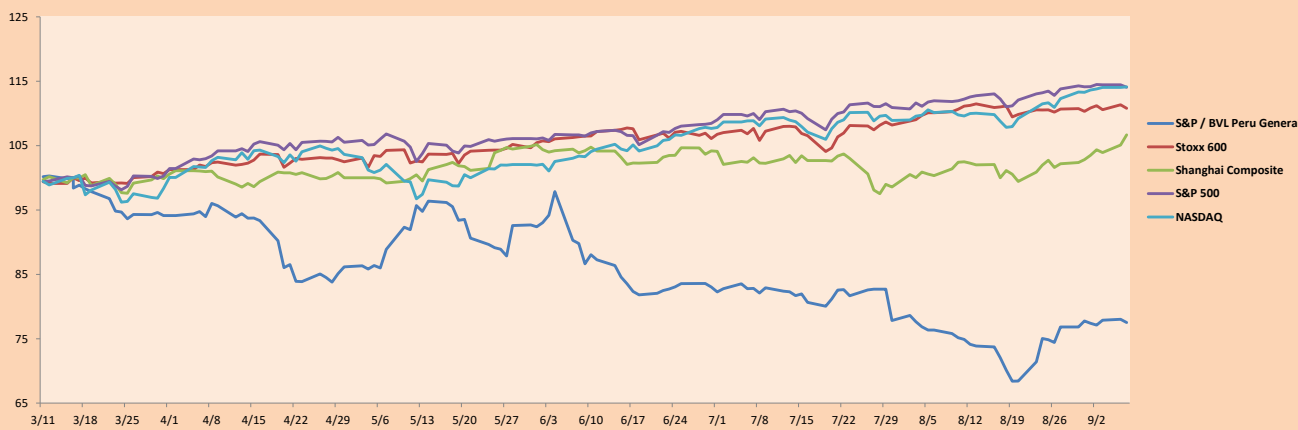
S&P/BVLConstructionTRPEN

*Legend: Variation 1D: 1 Day; 5D: 5 Days, 1M: 1 Month; YTD: Var.% 12/31/20 to date

Correlation Graph of Returns of Mining Index against Metallic Index of London (3 months)



Indices (6 months)



Base: 16/03/21=100
 Source: Bloomberg

Capital Market Laboratory Coordinator: Economist Bruno Bellido
 Collaboration: Maria Camarena, Alonso Garcia, Adrian Paredes y Jairo Valverde
 email: pulsobursatil@ulima.edu.pe
 facebook: www.facebook.com/pulsobursatil.ul

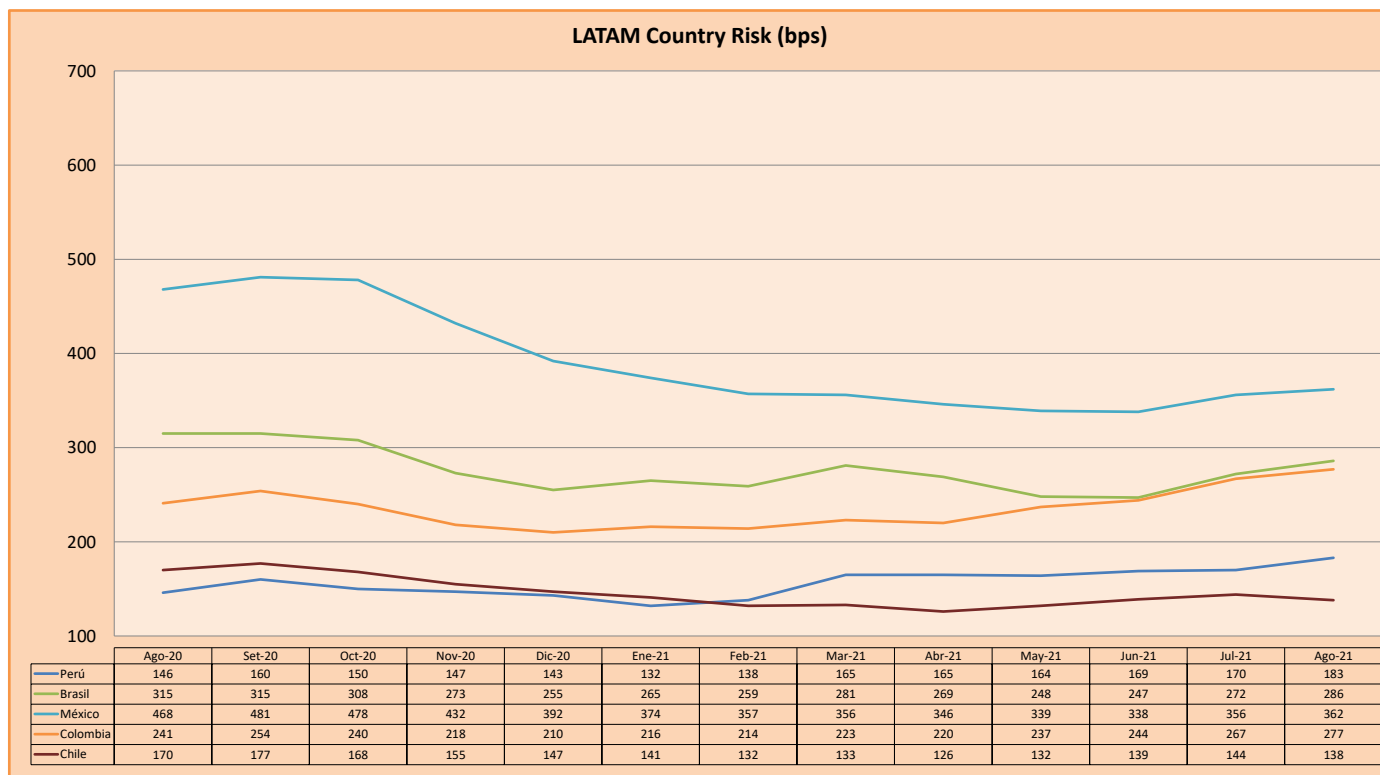
SOVEREIGN RATING

RISK RATINGS			
Moody's	S&P	Fitch	
Aaa	AAA	AAA	Prime
Aa1	AA+	AA+	High credit quality
Aa2	AA	AA	
Aa3	AA-	AA-	
A1	A+	A+	Medium-high grade, with low credit risk
A2	A	A	
A3	A-	A-	
Baa1	BBB+	BBB+	Moderate Credit Risk
Baa2	BBB	BBB	
Baa3	BBB-	BBB-	
Ba1	BB+	BB+	It has speculative elements and it is subject to substantial credit risk
Ba2	BB	BB	
Ba3	BB-	BB-	
B1	B+	B+	It is considered speculative and it has high credit risk
B2	B	B	
B3	B-	B-	
Caa1	CCC+	CCC	Bad credit conditions and it is subject to high credit risk
Caa2	CCC		
Caa3	CCC-		
Ca	CC	DDD	Very close to default or in default
C	C		
	D		

Source: Bloomberg

Latin America Credit Rating			
Clasificadora de riesgo			
Country	Moody's	Fitch	S&P
Peru	Requesting	Requesting	Requesting Data...
México	Requesting	Requesting	Requesting Data...
Venezuela	Requesting	Requesting	Requesting Data...
Brazil	Requesting	Requesting	Requesting Data...
Colombia	Requesting	Requesting	Requesting Data...
Chile	Requesting	Requesting	Requesting Data...
Argentina	Requesting	Requesting	Requesting Data...
Panama	Requesting	Requesting	Requesting Data...

Source: Bloomberg



Source: BCRP

Capital Market Laboratory Coordinator: Economist Bruno Bellido
Collaboration: Maria Camarena, Alonso García, Adrian Paredes y Jairo Valverde
email: pulsobursatil@ulima.edu.pe
facebook: www.facebook.com/pulsobursatil.ul