

PULSO BURSÁTIL

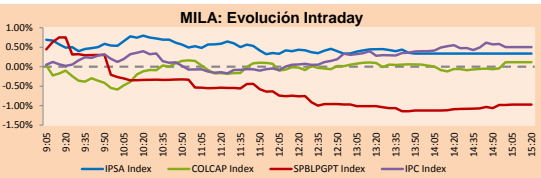
FACULTAD DE CIENCIAS EMPRESARIALES Y ECONÓMICAS
CARRERA DE ECONOMÍA
LABORATORIO DE MERCADO DE CAPITALES



MILA

Main Indexes	Close	1 D	5 D	1 M	YTD	Cap. Burs. (US\$ bill)
▲ IPSA (Chile)	4,362.59	0.63%	-1.11%	-2.87%	4.44%	103.74
▲ IGPA (Chile)	21,723.99	0.57%	-1.26%	-3.31%	3.41%	124.04
▼ COLSC (Colombia)	960.58	-0.39%	-0.43%	-0.16%	-9.29%	4.54
▲ COLCAP (Colombia)	1,361.95	0.11%	3.79%	3.18%	-5.28%	79.35
▼ S&P/BVL (Perú)*	18,279.29	-0.97%	0.39%	3.54%	-12.21%	84.84
▼ S&P/BVL SEL (Perú)	480.92	-1.04%	0.14%	2.89%	-12.78%	75.70
▲ S&P/BVL LIMA 25	24,864.97	-0.85%	0.05%	5.50%	-1.32%	83.82
▲ IPC (México)	51,385.55	0.59%	-0.15%	-3.60%	16.61%	306.19
▼ S&P MILA 40	457.73	-0.19%	-0.28%	-3.93%	-14.38%	6,319.66

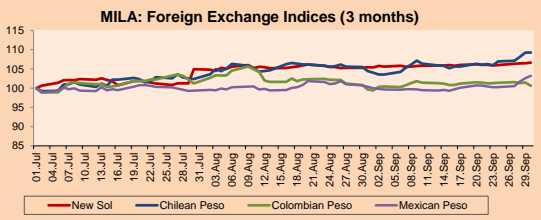
*Legend: Variation 1D: 1 day; 5D: 5 days; 1M: 1 Month; YTD: Var% 12/31/20 to date



Source: Bloomberg

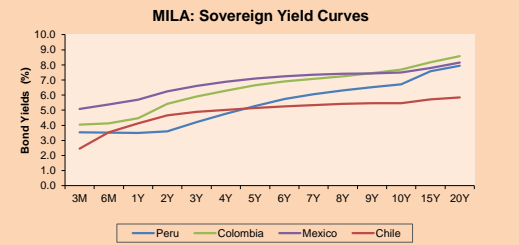
Currency	Price	1D*	5D*	30 D*	YTD*
▲ Sol (PEN)	4,134.5	0.14%	0.69%	1.13%	14.28%
▲ Chilean Peso (CLP)	810.06	0.02%	3.13%	4.64%	13.81%
▼ Colombian Peso (COP)	3,807.80	-0.84%	-0.67%	0.95%	11.02%
▲ Mexican Peso (MXN)	20.64	0.62%	2.95%	2.82%	3.64%

*Legend: Variation 1D: 1 day; 5D: 5 days; 1M: 1 Month; YTD: Var% 12/31/20 to date



Base: 01/07/21=100
Source: Bloomberg

Fixed Income	Currency	Price	Bid Yield (%)	Ask Yield (%)	Duration
PERU 7.35 07/21/25	USD	121.114	1.66	1.54	3.38
PERU 4.125 08/25/27	USD	110.8	2.21	2.12	5.31
PERU 8.75 11/21/33	USD	154.607	3.30	3.23	8.43
PERU 6.55 03/14/37	USD	135.343	3.59	3.52	10.26
PERU 5.625 11/18/2050	USD	136.251	3.62	3.59	16.38
CHILE 2.25 10/30/22	USD	101.972	0.63	0.18	1.06
CHILE 3.125 01/21/26	USD	107.03	1.48	1.39	4.04
CHILE 3.625 10/30/42	USD	104.602	3.34	3.30	14.98
COLOM 11.85 03/09/28	USD	154.773	2.72	2.40	5.00
COLOM 10.375 01/28/33	USD	147.3	4.94	4.83	7.53
COLOM 7.375 09/18/37	USD	123.327	5.24	5.17	10.13
COLOM 6.125 01/18/41	USD	110.401	5.29	5.23	11.70
MEX 4 10/02/23	USD	110.401	5.289	5.23	11.7
MEX5.55 01/45	USD	117.274	4.38	4.34	13.94



Source: Bloomberg

Lima, Sep 30, 2021

Equity

Largest gains	Exchange	Currency	Price	▲%
INFRAESTRUCTURA	Mexico	MXN	73.53	5.81
GRUPO CARSO-A1	Mexico	MXN	70.71	4.11
FIBRA UNO	Mexico	MXN	23.40	3.49
GRUPO MEXICO-B	Mexico	MXN	82.39	3.00
INDUSTRIAS PENOL	Mexico	MXN	243.30	2.95

Per Turnover	Exchange	Amount (US\$)
WALMART DE MEXIC	Mexico	106,007,413
AMERICA MOVIL-L	Mexico	66,047,626
GRUPO F BANORT-O	Mexico	41,390,024
SQUIMICH-B	Chile	33,830,297
GRUPO MEXICO-B	Mexico	29,989,084

Largest losses	Exchange	Currency	Price	▼%
SOUTHERN COPPER	Peru	USD	55.8	-5.44
VOLCAN CIA MIN-B	Peru	PEN	0.6	-3.23
SONDA SA	Chile	CLP	350	-3.11
PARQUE ARAUCO	Chile	CLP	826.5	-2.99
WALMART DE MEXIC	Mexico	MXN	70.13	-1.60

Per Volume	Exchange	Volume
ITAU CORPBANCA	Chile	690,715,283
BANCO SANTANDER	Chile	122,211,392
AMERICA MOVIL-L	Mexico	74,928,869
BANCO DE CHILE	Chile	68,740,891
ENEL CHILE SA	Chile	35,963,065

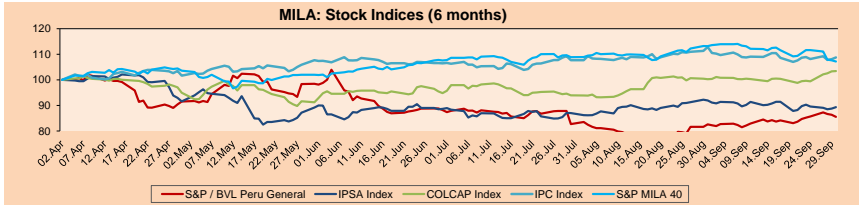
MILA

Peru: The General Index of the BVL ended today's session with a negative result of -0.97%. The index maintains an annual accumulated negative trend of -12.215% in local currency, while the adjusted return in dollars amounts to -23.18%. Then, the S&P / BVL Peru SEL varied by -1.08% while the S&P / BVL LIMA 25 by -0.85%. The PEN spot reached \$ / 4.1345. Headline: BCRP sells US\$ 489 million to contain dollar increase due to uncertainty generated by Bellido.

Chile: The IPSA index ended the day with a positive return of +0.63%. The sectors that benefited the most from the session were Energy (+2.44%) and Consumer Staples (+1.17%). The best performing stocks were Compañía de Cervecerías Unidas SA (+2.70%) and Empresa COPEC SA (+2.44%). Headline: The dollar in Chile remains bullish and has already risen \$100 since the beginning of the year.

Colombia: The COLCAP index closed today with a positive return of +0.11%. The sectors that benefited the most from the session were Communication Services (+1.11%) and Energy (+0.93%). The stocks with the best performance were Banco Davivienda SA (+1.80%) and Empresa de Telecomunicaciones (+1.11%). Headline: Colombia's central bank raises interest rates for the first time since 2016.

Mexico: The IPC index closed the day with a positive return of +0.59%. The sectors that benefited the most from the conference were Materials (+2.03%) and Health Care (+1.61%). The best performing stocks were Grupo Carso SAB de CV (+4.11%) and Grupo México SAB de CV (+3.00%). Headline: Mexico's central bank raises interest rate to 4.75% to address inflation.

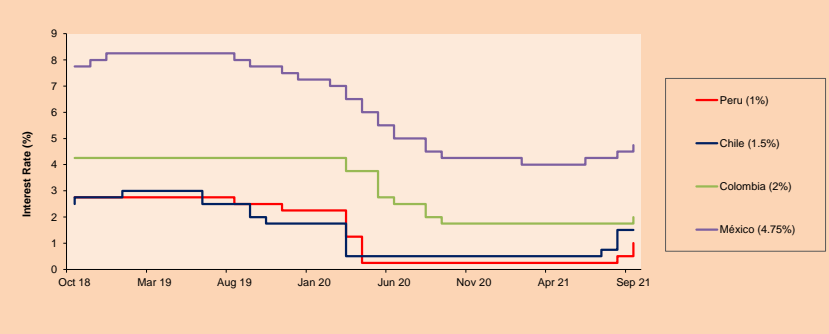


Base: 05/04/21=100
Source: Bloomberg

ETFs

ETFs	Curr.	Close	1D	5D	30 D	YTD	Exchange
▼ iShares MSCI All Peru Caped Index Fund	USD	26.3645	-0.51%	-1.29%	-1.92%	-23.98%	NYSE Arca
▼ iShares MSCI All Chile Caped Index Fund	USD	26	-0.19%	-4.97%	-9.03%	-13.94%	Cboe BZX
▲ Global X MSCI Colombia	USD	10.3	0.66%	2.59%	0.05%	-9.33%	NYSE Arca
▲ iShares MSCI Mexico Capped	USD	48.26	0.19%	-3.05%	-5.58%	12.26%	NYSE Arca
▲ iShares MSCI Emerging Markets	USD	50.38	0.80%	-1.97%	-3.87%	-2.50%	NYSE Arca
▲ Vanquard FTSE Emerging Markets	USD	50.01	0.68%	-1.84%	-4.25%	-0.20%	NYSE Arca
▲ iShares Core MSCI Emerging Markets Bonds	USD	61.76	0.80%	-1.98%	-3.64%	-0.45%	NYSE Arca
▲ iShares JP Morgan Emerging Markets Bonds	USD	62.67	0.51%	-1.21%	-1.89%	2.60%	Cboe BZX
- Morgan Stanley Emerging Markets Domestic	USD	5.85	0.00%	-3.62%	-4.88%	-7.00%	New York

MILA: Policy Rate



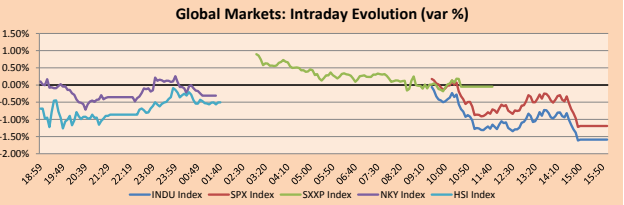
Source: Bloomberg

Capital Market Laboratory Coordinator: Economist Bruno Bellido
Collaboration: Miguel Solimano, Alonso García, Adrian Paredes y Jairo Valverde
email: pulsobursatil@ulima.edu.pe
facebook: www.facebook.com/pulsobursatil.ul

WORLD

Main Indices	Close	1 D*	5 D*	1 M*	YTD*	Market Cap. (US\$ Mill.)
▼ Dow Jones (USA)	33,843.92	-1.59%	-2.65%	-4.29%	10.58%	10,648,278
▼ Standard & Poor's 500 (EEUU)	4,307.54	-1.19%	-3.18%	-4.76%	14.68%	38,602,226
▼ NASDAQ Composite (USA)	14,448.58	-0.44%	-4.01%	-5.31%	12.11%	24,522,467
▼ Stoxx EUROPE 600 (Europe)	454.81	-0.05%	-2.71%	-3.41%	13.99%	10,935,066
▼ DAX (Germany)	15,260.69	-0.68%	-2.45%	-3.63%	11.24%	1,419,012
▼ FTSE 100 (United Kingdom)	7,086.42	-0.31%	0.11%	-0.47%	9.69%	1,518,875
▼ CAC 40 (France)	6,520.01	-0.62%	-2.72%	-2.40%	17.45%	1,841,345
▼ IBEX 35 (Spain)	8,796.30	-0.94%	-0.91%	-0.57%	8.95%	509,607
▼ MSCI AC Asia Pacific Index	196.70	-1.51%	-1.43%	-2.52%	-1.61%	25,686,271
▼ HANG SENG (Hong Kong)	24,575.64	-0.36%	0.26%	-5.58%	-9.75%	3,750,852
▲ SHANGHAI SE Comp. (China)	3,568.17	0.90%	-2.03%	0.03%	2.74%	7,169,162
▼ NIKKEI 225 (Japan)	29,452.66	-0.31%	-0.63%	3.52%	7.32%	4,038,774
▲ S&P/ASX 200 (Australia)	7,332.16	1.88%	-0.52%	-2.59%	11.31%	1,701,889
▲ KOSPI (South Korea)	3,068.82	0.59%	-0.15%	-4.31%	6.80%	1,815,677

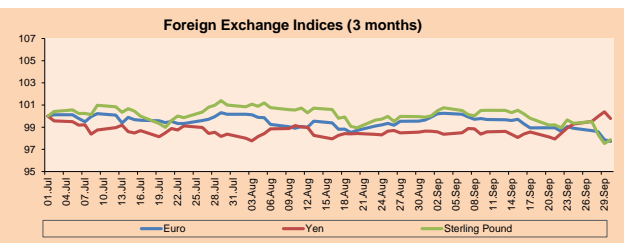
*Legend: Variation 1D: 1 Day; 5D: 5 Days; 1M: 1 Month; YTD: Var.% 12/31/20 to date



Source: Bloomberg

Currency	Price	1 D*	5 D*	1 M*	YTD*
▼ Euro	1.1580	-0.16%	-1.36%	-1.94%	-5.21%
▼ Yen	111.2900	-0.60%	0.87%	1.15%	7.79%
▲ Sterling Pound	1.3474	0.35%	-1.79%	-2.04%	-1.43%
▼ Yuan	6.4448	-0.40%	-0.22%	-0.25%	-1.26%
▲ Hong Kong Dollar	7.7863	0.01%	0.02%	0.12%	0.43%
▲ Brazilian Real	5.4429	0.52%	2.62%	5.63%	4.70%
▲ Argentine Peso	98.7363	0.02%	0.20%	1.02%	17.34%

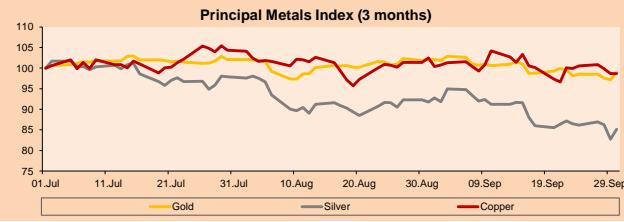
*Legend: Variation 1D: 1 Day; 5D: 5 Days; 1M: 1 Month; YTD: Var.% 12/31/20 to date



Base: 01/07/21=100
Source: Bloomberg

Commodities	Close	1 D*	5 D*	1 M*	YTD*
▲ Oro (US\$ Oz. T) (LME)	1,756.95	1.77%	0.81%	-3.12%	-7.45%
▲ Plata (US\$ Oz. T) (LME)	22.17	2.95%	-1.52%	-7.21%	-16.03%
- Cobre (US\$ TM) (LME)	9,174.00	0.00%	-1.19%	-3.72%	18.39%
- Zinc (US\$ TM) (LME)	3,041.40	0.00%	-1.49%	1.58%	11.43%
▲ Petróleo WTI (US\$ Barril) (NYM)	75.03	0.27%	2.36%	9.92%	56.80%
- Estreño (US\$ TM) (LME)	36,825.00	0.00%	0.33%	7.04%	79.25%
- Plomo (US\$ TM) (LME)	2,157.00	0.00%	1.20%	-9.60%	9.17%
▲ Azúcar #11 (US\$ Libra) (NYB-ICE)	20.34	3.14%	0.25%	-1.02%	42.54%
▲ Cacao (US\$ TM) (NYB-ICE)	2,652.00	2.43%	1.53%	4.41%	6.00%
▲ Café Arábica (US\$ TM) (NYB-ICE)	194.00	0.31%	1.78%	-0.97%	43.92%

*Legend: Variación 1D: 1 Día; 5D: 5 Días; 1M: 1 Mes; YTD: Var.% 31/12/20 a la fecha



Base: 01/07/21=100
Source: Bloomberg

Equity

Germany (Stocks from DAX Index)		Price	▲%	Exchange	Largest losses		Price	▼%	Exchange
Largest gains	Curr.				BMW GY	EUR	82.76	-2.02	Xetra
IFX GY	EUR	35,525	0.82	Xetra	AIR GY	EUR	114.92	-1.91	Xetra
PUM GY	EUR	96.42	0.71	Xetra	DPV GY	EUR	54.48	-1.87	Xetra
FRE GY	EUR	41,835	0.54	Xetra	MTX GY	EUR	195.4	-1.56	Xetra
DBK GY	EUR	11,038	0.36	Xetra					

Global Overview:

United States:

The US market closes with negative returns as lawmakers' progress to avoid a government "shutdown" failed to whet investors' appetite. The House backed a short-term appropriations bill to keep the government running until December 3. President Joe Biden is expected to sign the bill and avoid "shutdown". The DOW JONES -1.58% closed with losses and with 28 of its 30 values down. The most affected sectors were Industrial -2.37%, Materials -2.14% and Finance -1.82%. On the other hand, the S&P 500 -1.19% closed with a loss and is very close to breaking its winning streak after 7 months. The most affected sectors were Industrial -2.11%, Basic Products -1.85% and Finance -1.62%. Lastly, the NASDAQ -0.44% continues to be hit by rising sovereign yields. The stocks with the biggest losses were Elite Education Group -36.87%, TDH Holdings Inc. -30.43% and Kalva Brands Innovations -28.27%. Thus, DOW JONES -1.59%; S&P 500 -1.19% and NASDAQ -0.44% ended the day with negative results.

Europe:

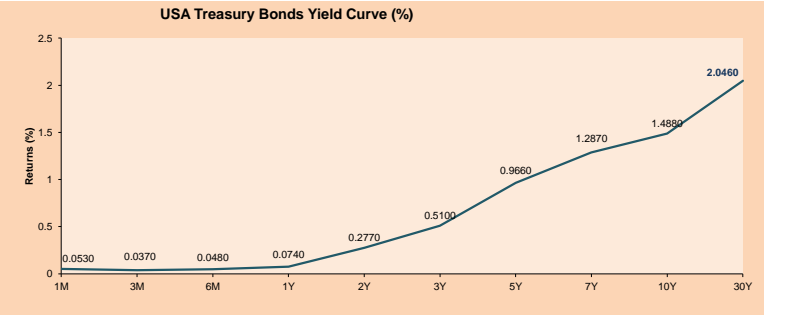
The main European markets ended slightly lower, after the end of the most volatile month with a level of monthly losses of 3% in a context of higher inflation and global economic slowdown. Thus, the pan-European STOXX600 index ended lower, since the increase in the mining sector + 2.2% was mitigated by the fall in travel shares -2.2%. Also, the index for Great Britain ended lower, despite the success of Oxford Nanopore in its debt with an increase of 45%. On the other hand, the DAX of Germany closed negative, having a generalized fall in its sectors except for the health sector + 0.36%. In addition, the CAC40 in France ended with negative returns, due to the fall in the financial sector and the increase in the price of gas, where measures to control it have already been initiated. Finally, analysts expect a promising future for the European market as possible increases in interest rates "will not be detrimental". It should be noted that they attribute this monthly market drop to global tension with the Evergrande case and the aggressive stance of the Federal Reserve. Thus, FTSE 100 + 0.16%; CAC 40 + 0.59%; DAX + 0.23%; STOXX 600 + 0.44% ended the day higher.

Asia:

The main Asia-Pacific indices closed the day mixed, but with some positive momentum. In China, investors closely followed the country's manufacturing PMI index, which rose to 50.0 in September from 49.2 in the previous month. On the other hand, export sales continued to fall, as did employment for the second consecutive month. Elsewhere, in Hong Kong, stocks closed lower, after the Central Government said it would set governance rules on algorithms developed by technology companies. China Evergrande Group fell -9.91% after defaulting on bond interest payments, its second offshore debt default in the week. In Japan, stocks closed lower for the fourth consecutive session, due to a drop in industrial production and retail sales data. On the other hand, Fumio Kishida was elected as the new prime minister. In South Korea, stocks posted a positive result, but closed the month with the largest monthly decline since March 2020, due to the impact of energy costs, inflation and the massive sell-off in technology stocks. In Australia, indices soared on statements that its economy is resilient and well positioned to recover from COVID-19. In turn, positive building permit data and rising private credit boosted stocks. Thus, NIKKEI -0.31%; HANG SENG -0.36%; CSI 300 +0.67%; S&P/ASX 200 +1.88%; KOSPI +0.28% and SHANGHAI COMPOSITE +0.90% ended with mixed performances.

ETFs

ETFs	Curr.	Close	1D	5D	30 D	YTD	Exchange
SPDR S&P 500 ETF TRUST	USD	429.14	-1.22%	-3.17%	-4.97%	14.78%	NYSE Arca
ISHARES MSCI EMERGING MARKET	USD	50.38	0.80%	-1.97%	-3.67%	-2.50%	NYSE Arca
ISHARES IBOXX HIGH YLD CORP	USD	87.49	-0.11%	-0.62%	-0.68%	0.22%	NYSE Arca
FINANCIAL SELECT SECTOR SPDR	USD	37.53	-1.57%	-1.29%	-2.27%	27.31%	NYSE Arca
VANECK GOLD MINERS ETF	USD	29.47	1.94%	-1.41%	-9.60%	-18.18%	NYSE Arca
ISHARES RUSSELL 2000 ETF	USD	218.75	-0.94%	-2.70%	-3.17%	11.57%	NYSE Arca
SPDR GOLD SHARES	USD	164.22	1.80%	0.43%	-3.22%	-7.93%	NYSE Arca
ISHARES 20+ YEAR TREASURY BO	USD	144.32	-0.01%	-2.72%	-3.03%	-8.50%	NASDAQ GM
INVESTCO QQQ TRUST SERIES 1	USD	357.96	-0.37%	-4.03%	-5.79%	14.09%	NASDAQ GM
ISHARES BIOTECHNOLOGY ETF	USD	161.68	0.17%	-7.04%	-6.15%	6.73%	NASDAQ GM
ENERGY SELECT SECTOR SPDR	USD	52.09	-1.51%	3.11%	7.62%	37.44%	NYSE Arca
PROSHARES ULTRA VIX ST FUTUR	USD	24.55	0.08%	14.29%	12.56%	-76.95%	Cboe BZX
UNITED STATES OIL FUND LP	USD	52.56	0.46%	2.30%	9.41%	59.22%	NYSE Arca
ISHARES MSCI BRAZIL ETF	USD	32.13	-0.62%	-5.25%	-11.73%	-13.33%	NYSE Arca
SPDR S&P OIL & GAS EXP & PR	USD	96.72	-0.32%	5.66%	17.02%	65.33%	NYSE Arca
UTILITIES SELECT SECTOR SPDR	USD	63.88	-0.79%	-2.04%	-6.80%	1.88%	NYSE Arca
ISHARES US REAL ESTATE ETF	USD	102.39	-1.56%	-4.22%	-6.88%	19.54%	NYSE Arca
SPDR S&P BIOTECH ETF	USD	125.71	0.06%	-5.53%	-5.37%	-10.70%	NYSE Arca
ISHARES IBOXX INVESTMENT GRA	USD	133.03	-0.26%	-1.61%	-1.68%	-3.69%	NYSE Arca
ISHARES JP MORGAN USD EMERGI	USD	110.06	-0.02%	-1.20%	-2.94%	-5.05%	NASDAQ GM
REAL ESTATE SELECT SECT SPDR	USD	44.45	-1.59%	-4.29%	-6.77%	21.58%	NYSE Arca
ISHARES CHINA LARGE-CAP ETF	USD	38.93	0.96%	-0.33%	-4.91%	-16.15%	NYSE Arca
CONSUMER STAPLES SPDR	USD	68.84	-1.80%	-2.48%	-4.73%	2.06%	NYSE Arca
VANECK JUNIOR GOLD MINERS	USD	38.34	2.46%	-2.12%	-11.06%	-29.31%	NYSE Arca
SPDR BBG BARC HIGH YIELD BND	USD	109.38	-0.12%	-0.55%	-0.58%	0.39%	NYSE Arca
VANGUARD REAL ESTATE ETF	USD	101.78	-1.65%	-4.54%	-6.26%	19.84%	NYSE Arca
GRAYSCALE BITCOIN TRUST BTC	USD	33.85	5.39%	-5.68%	-10.38%	5.78%	OTC US



Source: Bloomberg

LIMA

Stocks

Ticker	Currency	Price	1D*	5D*	30D*	YTD*	Frequency	Volume (US\$)	Beta	Dividend Yield (%)	Price Earning	Market Cap. (M US\$)	Economic Sector*	Index Weight
ALICORC1 PE**	S/.	5.20	-0.39%	-0.43%	-0.16%	-9.29%	100.00%	459,456	1.01	16.06	10.70	1,072.85	Industrial	3.53%
ATACOCB1 PE**	S/.	0.12	0.00%	0.83%	34.44%	-12.32%	65.00%	892	1.10	0.00	-	27.65	Mining	1.02%
BACKUSI1 PE**	S/.	17.50	0.00%	0.23%	7.36%	-13.15%	75.00%	21,438	0.72	5.34	8.40	5,665.71	Industrial	0.82%
BAP PE**	US\$	112.00	-1.18%	3.68%	5.06%	-30.26%	100.00%	46,650	1.20	1.09	-	10,570.82	Diverse	5.82%
BVN PE**	US\$	6.80	-0.15%	-7.10%	-9.09%	-43.33%	95.00%	111,667	1.09	0.00	-	1,871.10	Mining	5.88%
CASAGRC1 PE**	S/.	5.38	-0.37%	-0.37%	5.08%	13.26%	100.00%	37,467	1.28	13.90	4.90	109.61	Agricultural	1.31%
BBVAC1 PE**	S/.	1.75	-0.57%	1.74%	1.74%	-16.51%	75.00%	14,834	1.15	2.49	17.83	2,860.64	Finance	2.85%
CORARE11 PE**	S/.	1.06	-0.93%	-2.75%	3.92%	19.10%	95.00%	59,452	1.22	26.00	2.10	352.03	Industrial	1.72%
CPACASC1 PE**	S/.	4.50	0.22%	-1.96%	2.27%	-15.09%	85.00%	16,581	0.70	17.56	32.14	505.18	Industrial	2.38%
CVERDEC1 PE**	US\$	17.20	-1.15%	-1.99%	9.55%	-17.78%	100.00%	45,064	1.39	3.32	7.69	6,020.96	Mining	5.25%
ENGEPEC1 PE**	S/.	1.85	-0.54%	-0.54%	-5.37%	-21.94%	70.00%	3,492	0.68	17.98	8.15	1,071.91	Public Services	1.44%
ENDISPC1**	S/.	3.92	0.00%	-8.84%	22.50%	-27.41%	45.00%	91,907	0.80	0.00	8.63	605.43	Public Services	0.98%
FERREYC1 PE**	S/.	1.69	-0.59%	1.20%	-1.74%	-2.87%	100.00%	89,477	1.15	10.78	5.26	398.82	Diverse	4.90%
AENZAC1 PE**	S/.	1.50	0.00%	7.91%	9.49%	-13.79%	85.00%	11,013,095	0.94	0.00	-	316.33	Diverse	4.05%
IFS PE**	US\$	22.20	-1.07%	-0.45%	-2.50%	-28.25%	95.00%	8,869	1.26	3.47	6.33	2,562.94	Diverse	7.22%
INRETC1 PE**	US\$	33.40	-1.33%	2.30%	17.19%	-14.80%	95.00%	3,993,198	0.88	2.04	56.58	3,433.76	Diverse	5.28%
LUSURC1 PE**	S/.	11.70	-0.26%	-0.26%	10.90%	-54.12%	45.00%	3,574	#N/A #N/A	8.88	12.68	1,378.00	Public Services	1.81%
MINSUR11 PE**	S/.	2.66	0.00%	0.38%	3.10%	43.78%	85.00%	1,350	0.99	0.00	3.20	1,854.83	Mining	3.09%
PML PE**	US\$	0.12	4.55%	12.75%	35.29%	8.49%	55.00%	12,263	1.20	0.00	-	30.40	Mining	2.12%
RELAPAC1 PE**	S/.	0.18	0.00%	1.16%	5.42%	153.62%	100.00%	43,198	0.98	0.00	3.11	352.12	Industrial	2.12%
SCCO PE**	US\$	55.80	-5.44%	-2.62%	-10.65%	-15.33%	80.00%	19,611	0.77	4.84	14.73	43,137.93	Mining	2.14%
SIDERC1 PE**	S/.	1.19	-0.83%	1.71%	7.21%	10.39%	100.00%	11,359	0.90	41.71	3.11	201.48	Industrial	1.43%
TV PE**	US\$	0.14	-0.71%	-4.11%	-6.04%	-4.76%	85.00%	21,392	1.20	0.00	-	138.47	Mining	2.93%
UNACEMC1 PE**	S/.	1.46	0.00%	0.00%	4.29%	-5.81%	100.00%	81,685	1.25	3.15	11.53	642.03	Industrial	3.00%
VOLCABC1 PE**	S/.	0.60	-3.23%	-4.76%	22.45%	15.38%	100.00%	93,111	1.80	0.00	-	591.59	Mining	5.90%
NEXAPEC1 PE**	S/.	2.90	0.00%	0.00%	7.01%	2.47%	45.00%	12,134	1.14	0.00	7.84	925.05	Mining	1.56%

Quantity of shares: 26

Source: Bloomberg, Económática

* Bloomberg Industry Classification System

** PER is used in the stock market and original currency of the instrument

*Legend: Variation 1D: 1 Day; 5D: 5 Days; 1M: 1 Month; YTD: Var.% 12/31/20 to date

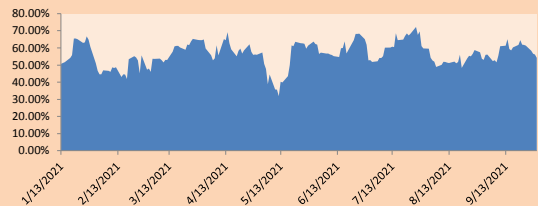
Sectorial Indices

	Close	1D*	5D*	30D*	YTD*	Beta
S&P/BVLMining	360.51	-3.60%	-2.88%	-6.34%	-7.55%	0.77
S&P/BVLConsumer	1,017.10	-0.91%	2.13%	13.12%	-6.57%	0.87
S&P/BVLIndustrials	196.53	-0.09%	1.36%	4.34%	3.13%	0.97
S&P/BVLFinancials	839.77	-0.94%	3.80%	6.23%	-18.78%	1.13
S&P/BVLConstruction	212.89	0.10%	1.42%	7.14%	1.80%	0.89
S&P/BVLPublicSvcs	512.25	1.93%	0.21%	10.43%	-16.59%	0.40
S&P/BVLElectricUtil	500.09	1.93%	0.21%	10.43%	-16.58%	0.40

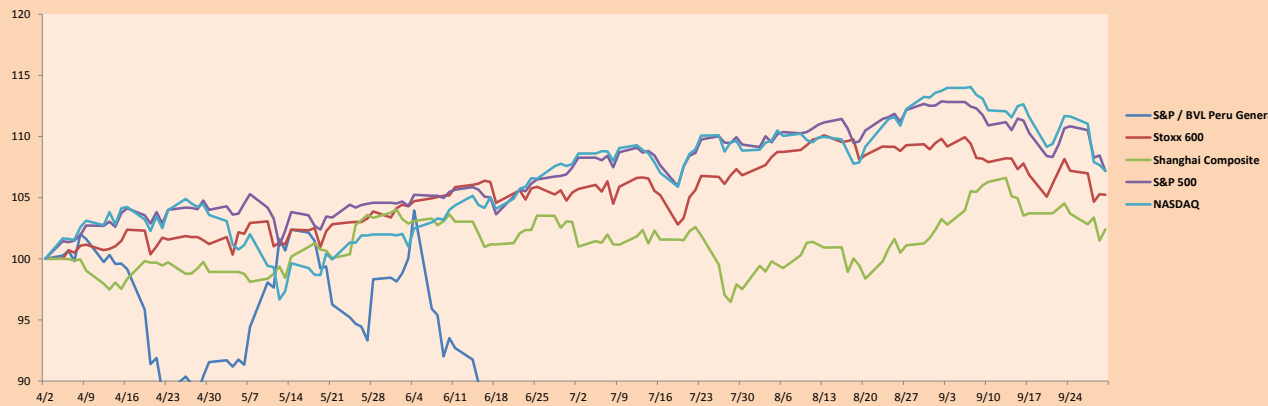
S&P/BVLConstructionTRPEN

*Legend: Variation 1D: 1 Day; 5D: 5 Days; 1M: 1 Month; YTD: Var.% 12/31/20 to date

Correlation Graph of Returns of Mining Index against Metallic Index of London (3 months)



Indices (6 months)



Base: 02/04/21=100
Source: Bloomberg

Capital Market Laboratory Coordinator: Economist Bruno Bellido
Collaboration: Miguel Solimano, Alonso Garcia, Adrian Paredes y Jairo Valverde
email: pulsobursatil@ulima.edu.pe
facebook: www.facebook.com/pulsobursatil.ul

SOVEREIGN RATING

RISK RATINGS

Moody's	S&P	Fitch	
Aaa	AAA	AAA	Prime
Aa1	AA+	AA+	High credit quality
Aa2	AA	AA	
Aa3	AA-	AA-	
A1	A+	A+	Medium-high grade, with low credit risk
A2	A	A	
A3	A-	A-	
Baa1	BBB+	BBB+	Moderate Credit Risk
Baa2	BBB	BBB	
Baa3	BBB-	BBB-	
Ba1	BB+	BB+	It has speculative elements and it is subject to substantial credit risk
Ba2	BB	BB	
Ba3	BB-	BB-	
B1	B+	B+	It is considered speculative and it has high credit risk
B2	B	B	
B3	B-	B-	
Caa1	CCC+		Bad credit conditions and it is subject to high credit risk
Caa2	CCC		
Caa3	CCC-	CCC	
Ca	CC		Very close to default or in default
	C		
C	D	DDD DD D	

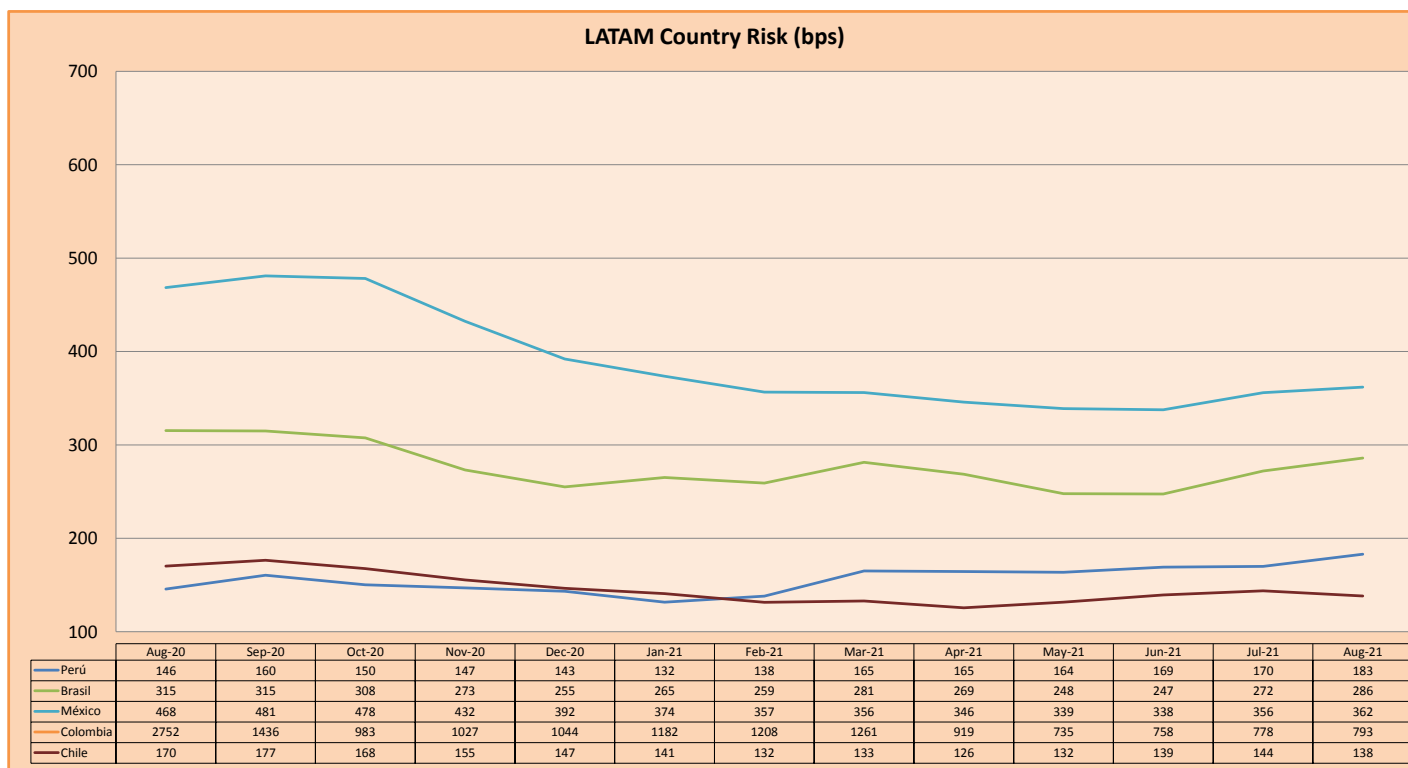
Source: Bloomberg

Latin America Credit Rating

Clasificadora de riesgo

Country	Moody's	Fitch	S&P
Peru	Baa1	BBB+	BBB+
México	Ba2	BB-	BB-
Venezuela	C	WD	NR
Brazil	Ba2	BB-	BB-
Colombia	Baa2	BB+	BB+
Chile	A1	A-	A
Argentine	Ca	WD	CCC+
Panama	Baa2	BBB-	BBB

Source: Bloomberg



Source: BCRP

Capital Market Laboratory Coordinator: Economist Bruno Bellido
Collaboration: Miguel Solimano, Alonso García, Adrian Paredes y Jairo Valverde
email: pulsobursatil@ulima.edu.pe
facebook: www.facebook.com/pulsobursatil.ul