

PULSO BURSÁTIL

FACULTAD DE CIENCIAS EMPRESARIALES Y ECONÓMICAS
CARRERA DE ECONOMÍA
LABORATORIO DE MERCADO DE CAPITALES

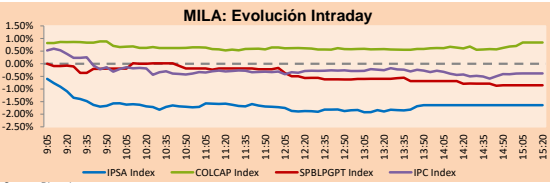


MILA

Lima, October 4, 2021

Main Indexes	Close	1 D	5 D	1 M	YTD	Cap. Burs. (US\$ bill)
▼ IPSA (Chile)	4,242.62	-1.94%	-2.51%	-4.95%	1.57%	104.28
▼ IGPA (Chile)	21,176.06	-1.77%	-2.37%	-5.12%	0.80%	122.58
▲ COLSC (Colombia)	965.43	0.16%	0.65%	-0.08%	-8.83%	4.53
▲ COLCAP (Colombia)	1,381.76	0.84%	2.70%	4.09%	-3.90%	81.33
▼ S&P/BVL (Perú)*	18,192.05	-0.85%	-2.47%	2.90%	-12.63%	82.29
▼ S&P/BVL SEL (Perú)	480.59	-0.41%	-2.23%	3.56%	-12.84%	74.67
▼ S&P/BVL LIMA 25	24,631.70	-0.54%	-2.62%	3.72%	-2.25%	81.24
▼ IPC (México)	50,862.94	-0.39%	-1.43%	-1.88%	15.42%	308.02
▼ S&P MILA 40	456.06	-1.11%	-1.19%	-4.08%	-14.70%	6,311.94

*Legend: Variation 1D: 1 day; 5D: 5 days; 1M: 1 Month; YTD: Var% 12/31/20 to date

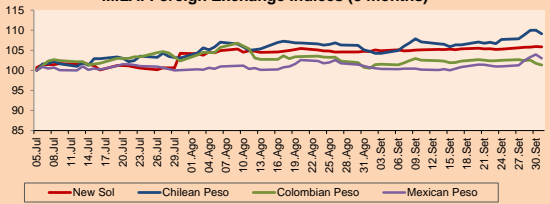


Source: Bloomberg

Currency	Price	1D*	5D*	30 D*	YTD*
▲ Sol (PEN)	4,131.10	0.02%	0.21%	0.92%	14.18%
▲ Chilean Peso (CLP)	806.05	0.34%	1.48%	4.99%	13.24%
▲ Colombian Peso (COP)	3,795.40	0.05%	-1.25%	-0.14%	10.66%
▲ Mexican Peso (MXN)	20.49	0.21%	1.91%	2.84%	2.90%

*Legend: Variation 1D: 1 day; 5D: 5 days; 1M: 1 Month; YTD: Var% 12/31/20 to date

MILA: Foreign Exchange Indices (3 months)

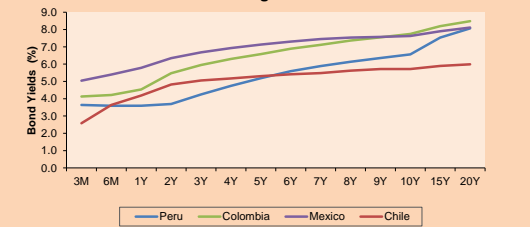


Base: 05/07/21=100

Source: Bloomberg

Fixed Income	Currency	Price	Bid Yield (%)	Ask Yield (%)	Duration
PERU 7.35 07/21/25	USD	121.051	1.67	1.54	3.37
PERU 4.125 08/25/27	USD	110.678	2.24	2.13	5.29
PERU 8.75 11/21/33	USD	154.533	3.31	3.23	8.41
PERU 6.55 03/14/37	USD	135.3	3.59	3.53	10.24
PERU 5.625 11/18/2050	USD	135.593	3.65	3.62	16.33
CHILE 2.25 10/30/22	USD	101.958	0.62	0.20	1.05
CHILE 3.125 01/21/26	USD	106.979	1.50	1.39	4.03
CHILE 3.625 10/30/42	USD	104.376	3.35	3.32	14.97
COLOM 11.85 03/09/28	USD	154.785	2.71	2.39	4.99
COLOM 10.375 01/28/33	USD	146.333	5.02	4.92	7.52
COLOM 7.375 09/18/37	USD	123.376	5.24	5.16	10.14
COLOM 6.125 01/18/41	USD	110.528	5.28	5.22	11.72
MEX 4 10/02/23	USD	110.528	5.28	5.219	11.72
MEX5.55 01/45	USD	117.169	4.39	4.34	13.92

MILA: Sovereign Yield Curves



Source: Bloomberg

Equity

Largest gains	Exchange	Currency	Price	▲%
INFRAESTRUCTURA	Mexico	MXN	79.19	8.99
ECOPETROL	Colombia	COP	2825.00	2.02
GRUPO CARSO-A1	Mexico	MXN	71.44	2.01
BECLE SAB DE CV	Mexico	MXN	45.45	1.52
GRUPO ARGOS SA	Colombia	COP	11490.00	1.32

Per Turnover

	Exchange	Amount (US\$)
GRUPO F BANORT-O	Mexico	36,788,220
WALMART DE MEXIC	Mexico	34,717,534
AMERICA MOVIL-L	Mexico	27,690,235
EMPRESAS COPEC	Chile	11,342,356
CEMEX SAB-CPO	Mexico	11,219,647

Largest losses	Exchange	Currency	Price	▼%
CAP	Chile	CLP	7706.6	-5.32
ENTEL	Chile	CLP	3170	-4.94
PARQUE ARAUCO	Chile	CLP	772.51	-3.92
CENCOSUD SHOPPIN	Chile	CLP	895.5	-3.71
ITAU CORPBANCA	Chile	CLP	1.914	-3.67

Per Volume

	Exchange	Volume
ITAU CORPBANCA	Chile	581,105,528
BANCO SANTANDER	Chile	73,848,721
ENEL CHILE SA	Chile	58,522,279
BANCO DE CHILE	Chile	40,355,481
AMERICA MOVIL-L	Mexico	31,357,956

MILA

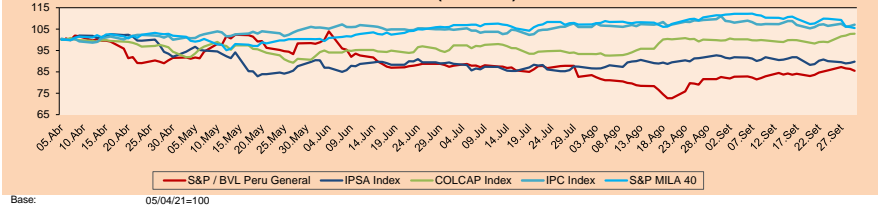
Peru: The General Index of the BVL ended today's session with a negative result of 0.85%. The index maintains an annual accumulated negative trend of -12.63% in local currency, while the adjusted yield in dollars amounts to -23.48%. Then, the S&P / BVL Peru SEL varied by -0.41% while the S&P / BVL LIMA 25 by -0.54%. The PEN spot reached S/. 4.1310. Headline: Congress will present tomorrow the motion of censure against Iber Maravi.

Chile: The IPSA index ended the day with a negative return of -1.94%. The sectors least benefited from the day were Communication Services (-4.94%) and Real Estate (-4.11%). The most performing stocks were CAP SA (-5.32%) and Plaza SA (-5.22%). Headline: Piñera after Pandora Paers: "The decision to sell Dominga mining was not consulted or informed to avoid any hint of conflict of interest."

Colombia: The COLCAP index ended the day with a positive return of +0.84%. The sector that benefited the most from the session was Energy (+1.81%). The best performing stocks were Canacol Energy LTD (+5.37%) and Mineros SA (+2.63%). Headline: International oil prices rise more than 2%.

Mexico: The IPC index closed the day with a negative return of -0.39%. The sectors that benefited the least from the session were Non-Basic Consumer Products (-2.50%) and Real Estate Goods (-0.92%). The worst performing stocks were El Puerto de Liverpool (-2.69%) and Aalsea SAB de CV (-2.36%). Owner: Gas companies suppress distribution routes due to price control; they insist on their elimination

MILA: Stock Indices (6 months)



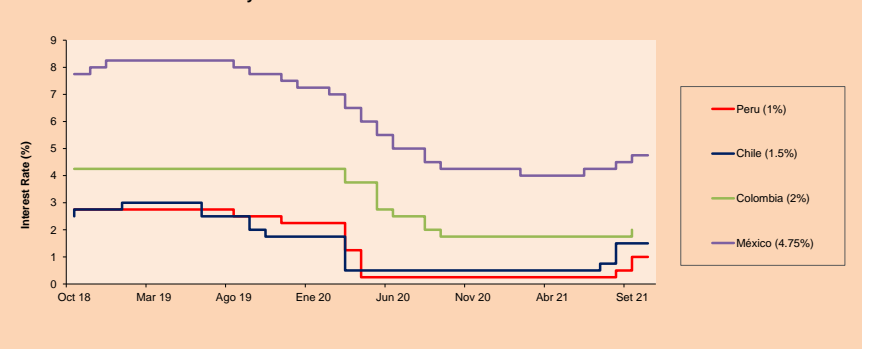
Base:

Source: Bloomberg

ETFs

	Curr.	Close	1D	5D	30 D	YTD	Exchange
▼ iShares MSCI All Peru Caped Index Fund	USD	26.33	-0.27%	-2.73%	-1.64%	-24.08%	NYSE Arca
▼ iShares MSCI All Chile Caped Index Fund	USD	25.75	-2.09%	-3.52%	-9.93%	-14.76%	Cboe BZX
▲ Global X MSCI Colombia	USD	10.5	0.39%	3.06%	2.29%	-7.57%	NYSE Arca
▼ iShares MSCI Mexico Capped	USD	48.1	-0.89%	-3.28%	-4.41%	11.89%	NYSE Arca
▼ iShares MSCI Emerging Markets	USD	49.59	-1.47%	-2.97%	-6.65%	-4.03%	NYSE Arca
▼ Vanguard FTSE Emerging Markets	USD	49.35	-1.38%	-2.59%	-6.69%	-1.52%	NYSE Arca
▼ iShares Core MSCI Emerging Markets	USD	60.88	-1.46%	-2.89%	-6.24%	-1.87%	NYSE Arca
▼ iShares JP Morgan Emerging Markets Bonds	USD	62.11	-0.97%	-1.63%	-3.41%	1.69%	Cboe BZX
▼ Morgan Stanley Emerging Markets Domestic	USD	5.85	-0.17%	-2.82%	-6.25%	-7.00%	New York

MILA: Policy Rate



Source: Bloomberg

Capital Market Laboratory Coordinator: Economist Bruno Bellido
Collaboration: María Camarena, Alonso García, Adrian Paredes y Jairo Valverde
email: pulso_bursatil@ulima.edu.pe
facebook: www.facebook.com/pulso_bursatil.ul

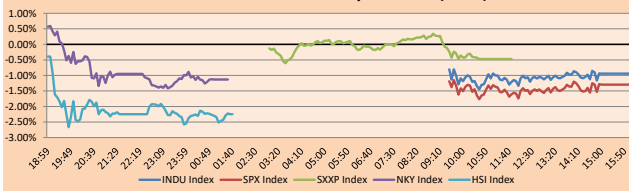
The content of this document is just for informational purposes. The information and opinions expressed should not be considered as recommendations for future decisions. Under any circumstances, the Capital Market Laboratory of University of Lima will be responsible for the use of the statements in this document.

WORLD

Main Indices	Close	1 D*	5 D*	1 M*	YTD*	Market Cap. (US\$ Mill.)
▼ Dow Jones (USA)	34,002.92	-0.94%	-2.48%	-3.86%	11.10%	10,680,237
▼ Standard & Poor's 500 (EEUU)	4,300.46	-1.30%	-3.21%	-5.18%	14.49%	38,583,817
▼ NASDAQ Composite (USA)	14,255.48	-2.14%	-4.77%	-7.21%	10.61%	24,624,218
▼ Stoxx EUROPE 600 (Europe)	450.77	-0.47%	-2.52%	-4.48%	12.97%	10,806,822
▼ DAX (Germany)	15,036.55	-0.79%	-3.45%	-4.72%	9.61%	1,393,641
▼ FTSE 100 (United Kingdom)	7,011.01	-0.23%	-0.74%	-1.78%	8.52%	1,487,219
▼ CAC 40 (France)	6,477.66	-0.61%	-2.60%	-3.17%	16.68%	1,823,175
▼ IBEX 35 (Spain)	8,791.70	-0.09%	-2.35%	-0.82%	8.89%	503,585
▼ MSCI AC Asia Pacific Index	193.99	-0.51%	-3.45%	-5.36%	-2.96%	25,534,464
▼ HANG SENG (Hong kong)	24,036.37	-2.19%	-0.64%	-7.20%	-11.73%	3,755,606
▲ SHANGHAI SE Comp. (China)	3,568.17	0.90%	-2.03%	0.03%	2.74%	7,169,135
▼ NIKKEI 225 (Japan)	28,444.89	-1.13%	-5.94%	-2.35%	3.65%	4,198,436
▲ S&P/ASX 200 (Australia)	7,278.54	1.29%	-1.43%	-3.53%	10.16%	1,704,784
▼ KOSPI (South Korea)	3,019.18	-1.43%	-6.55%	4.11%	1,785,529	

*Legend: Variation 1D: 1 Day; 5D: 5 Days; 1M: 1 Month; YTD: Var. % 12/31/20 to date

Global Markets: Intraday Evolution (var %)

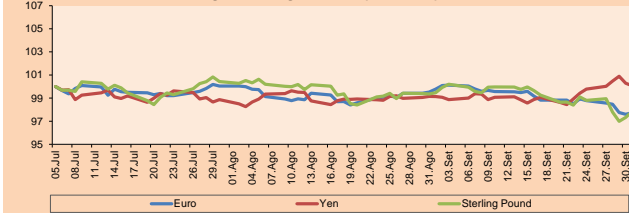


Source: Bloomberg

Currency	Price	1 D*	5 D*	1 M*	YTD*
▲ Euro	1.1621	0.22%	-0.63%	-2.18%	-4.87%
▼ Yen	110.9300	-0.11%	-0.06%	1.11%	7.44%
▲ Sterling Pound	1.3610	0.47%	-0.64%	-1.88%	-0.44%
- Yuan	6.4448	0.00%	-0.19%	-0.16%	-1.26%
▲ Hong Kong Dollar	7.7873	0.02%	0.05%	0.20%	0.44%
▲ Brazilian Real	5.4549	1.69%	1.18%	5.05%	4.93%
▲ Argentine Peso	98.8535	0.06%	0.22%	1.00%	17.48%

*Legend: Variation 1D: 1 Day; 5D: 5 Days; 1M: 1 Month; YTD: Var. % 12/31/20 to date

Foreign Exchange Indices (3 months)

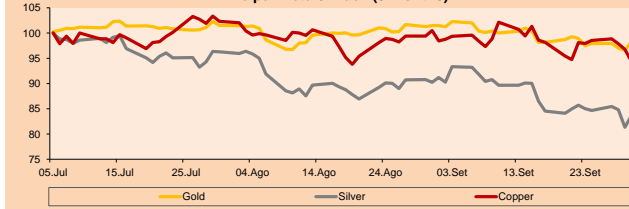


Base: 05/07/21=100
Source: Bloomberg

Commodities	Close	1 D*	5 D*	1 M*	YTD*
▲ Oro (US\$ Oz. T) (LME)	1,769.57	0.49%	1.11%	-3.18%	-6.78%
▲ Plata (US\$ Oz. T) (LME)	22.68	0.64%	0.24%	-8.23%	-14.09%
▲ Cobre (US\$ TM) (LME)	9,257.50	1.34%	-1.23%	-1.73%	19.47%
▲ Zinc (US\$ TM) (LME)	3,003.25	1.11%	-1.71%	0.58%	10.04%
▲ Petróleo WTI (US\$ Barril) (NYM)	77.62	2.29%	2.88%	12.38%	62.22%
▲ Estano (US\$ TM) (LME)	35,640.00	1.65%	-2.02%	6.79%	73.48%
▲ Plomo (US\$ TM) (LME)	2,187.00	0.21%	0.19%	-8.86%	10.69%
▼ Azúcar #11 (US\$ Libra) (NYB-ICE)	19.69	-1.84%	0.05%	-3.10%	37.98%
▼ Cacao (US\$ TM) (NYB-ICE)	2,752.00	1.55%	8.09%	3.69%	9.99%
▼ Café Arábica (US\$ TM) (NYB-ICE)	200.35	-1.81%	3.46%	3.81%	48.63%

*Leyenda: Variación 1D: 1 Día; 5D: 5 Días; 1M: 1 Mes; YTD: Var. % 31/12/20 a la fecha

Principal Metals Index (3 months)



Base: 05/07/21=100
Source: Bloomberg

Equity

Germany (Stocks from DAX Index)

Largest gains	Curr.	Price	▲%	Exchange	Largest losses	Curr.	Price	▼%	Exchange
BNR GY	EUR	80.48	1.08	Xetra	IFX GY	EUR	33.96	-2.69	Xetra
EOAN GY	EUR	10.85	0.74	Xetra	AIR GY	EUR	113.7	-2.52	Xetra
HEN3 GY	EUR	79	0.28	Xetra	ADS GY	EUR	264.05	-2.29	Xetra
BAYN GY	EUR	46.61	0.15	Xetra	ENR GY	EUR	22.26	-1.98	Xetra

Europe (Stocks from STOXX EUROPE 600)

Largest gains	Curr.	Price	▲%	Exchange	Largest losses	Curr.	Price	▼%	Exchange
LUNE SS	SEK	336	4.32	Stockholm	KINDSDB SS	SEK	127.5	-8.24	Stockholm
AKRBP NO	NOK	304.5	3.64	Oslo	VWS DC	DKK	230.2	-7.25	Copenhagen
GALP PL	EUR	10.07	3.54	EN Lisbon	ROO LN	GBP	265.5	-7.20	Londres
SBRY LN	Gbp	294.1	3.37	Londres	NDA FH	EUR	10.4	-6.47	Helsinki

Global Overview:

United States:

The US market closes with negative returns, after the fall due to the abandonment of big technology due to certain problems with the social media giant Facebook and the increase in the yields of treasury bonds. Also, concern about the possible default on the US government debt affected the market negatively. In this way, the S & P500 and the Dow Jones end up lower, while the Nasdaq has one of its worst results for almost a month, loading a technology drop of almost 10% from its previous peak. Among the main news, is the interruption of almost 6 hours of the Facebook, Instagram and WhatsApp platforms, which led to the action of the first company to a drop of 4.9% due to the massive sale of technology shares and the approximate loss half a million dollars an hour in advertising, according to the Standard Media Index. On the other hand, debt concerns surfaced after US President Joe Biden said that he cannot guarantee that the government will not exceed its debt limit of \$ 2.8 trillion unless there is a consensus between Republicans and Democrats to increase it. Thus, DOW JONES -0.94%; S&P 500 -1.30%; NASDAQ -2.14% ended the day with negative results.

Europe:

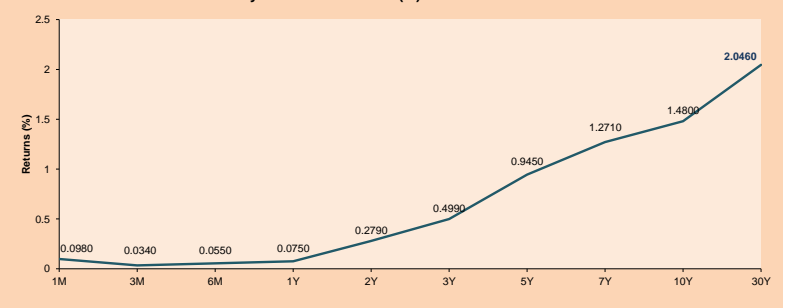
Major European indices ended the session with negative returns, due to rising inflation data, rising bond yields and Evergrande's financial problems. The pan-European STOXX 600 index closed down for the third consecutive session, affected by last week's wave of selling. The declines were led by technology companies, due to the pressure coming from Wall Street due to the rebound in Treasury bond yields. At the same time, banking and luxury stocks lost due to fears of a slowdown in world economic growth. On the other hand, a survey showed that investor optimism fell after the easing of economic expectations. In the United Kingdom, stocks closed lower after losses in the financial and travel sectors outweighed gains in the energy sector. Prime Minister Boris Johnson said the fuel crisis is "abating." In Germany, the index closed negative following fears of slowing global growth, inflation and rising interest rates. In France, luxury stocks led the main index declines. Both Korea -1.26% and LVHM -1.41%, luxury goods stocks, closed lower. Thus, FTSE 100 -0.23%; CAC 40 -0.61%; DAX -0.79%; STOXX 600 -0.47% ended the day negative.

Asia:

Major Asian indexes closed with mostly mixed performances, mainly due to defaults on two interest payments by Evergrande and slower growth in China. Fears of a slowdown grew as industrial profit and manufacturing PMI data came in worse than expected. Both the Chinese and South Korean markets did not trade today due to public holidays. Meanwhile, the Hang Seng Index ended lower mainly because trading in Hong Kong-listed China Evergrande Group shares was halted on Monday. These shares, along with all related structured products, were halted abruptly pending an announcement related to a merger or acquisition. Japan's NIKKEI, on the other hand, closed at a loss, dragged down by the Evergrande real estate crisis and disappointment over the new Prime Minister's Cabinet, as monetary policies such as those under "Abenomics" are not expected. The Australian market ended higher thanks to the purchase of off-market shares by Commonwealth Bank, which rose +5.6%. This boosted financial stocks, such as Westpac, up +2.1%, and National Australia Bank, up +1.9%. Thus, NIKKEI -1.13%; HANG SENG -2.19%; CSI 300 +0.67%; S&P/ASX 200 +1.29%; KOSPI -1.62%; SHANGAI COMPOSITE +0.90% ended with mixed performances.

ETFs	Curr.	Close	1D	5D	30 D	YTD	Exchange
SPDR S&P 500 ETF TRUST	USD	428.64	-1.29%	-3.16%	-5.39%	14.65%	NYSE Arca
ISHARES MSCI EMERGING MARKET	USD	49.59	-1.47%	-2.97%	-6.65%	-4.03%	NYSE Arca
ISHARES IBOXX HIGH YLD CORP	USD	87.10	-0.35%	-0.83%	-1.03%	-0.23%	NYSE Arca
FINANCIAL SELECT SECTOR SPDR	USD	37.82	-0.87%	-2.37%	-0.68%	28.29%	NYSE Arca
VANECK GOLD MINERS ETF	USD	29.67	1.16%	-0.03%	-10.85%	-17.65%	NYSE Arca
ISHARES RUSSELL 2000 ETF	USD	220.26	-0.91%	-2.73%	-3.38%	12.34%	NYSE Arca
SPDR GOLD SHARES	USD	165.36	0.47%	1.05%	-3.33%	-7.29%	NYSE Arca
ISHARES 20+ YEAR TREASURY BO	USD	144.98	-0.25%	-0.95%	-2.16%	-8.08%	NASDAQ GM
INVESCO QQQ TRUST SERIES 1	USD	352.62	-2.10%	-4.79%	-7.59%	12.39%	NASDAQ GM
ISHARES BIOTECHNOLOGY ETF	USD	155.68	-2.04%	-7.06%	-11.45%	2.77%	NASDAQ GM
ENERGY SELECT SECTOR SPDR	USD	54.72	1.63%	3.81%	12.55%	44.38%	NYSE Arca
PROSHARES ULTRA VIX ST FUTUR	USD	24.17	4.14%	16.54%	13.79%	-77.31%	Close BZX
UNITED STATES OIL FUND LP	USD	54.48	2.31%	2.99%	11.98%	65.07%	NYSE Arca
ISHARES MSCI BRAZIL ETF	USD	32.05	-3.11%	-3.87%	-10.60%	-13.54%	NYSE Arca
SPDR S&P OIL & GAS EXP & PR	USD	101.76	2.54%	3.12%	20.40%	73.95%	NYSE Arca
UTILITIES SELECT SECTOR SPDR	USD	64.76	1.38%	0.61%	-6.81%	3.29%	NYSE Arca
ISHARES US REAL ESTATE ETF	USD	103.62	-2.20%	-0.33%	-6.88%	20.98%	NYSE Arca
SPDR S&P BIOTECH ETF	USD	123.22	-2.34%	-6.59%	-8.17%	-12.47%	NYSE Arca
ISHARES IBOXX INVESTMENT GRA	USD	133.52	-0.16%	-0.99%	-1.09%	-3.34%	NYSE Arca
ISHARES JP MORGAN US EMERGI	USD	109.16	-0.48%	-1.31%	-3.55%	-5.82%	NASDAQ GM
REAL ESTATE SELECT SECT SPDR	USD	44.98	0.11%	-0.38%	-7.70%	23.03%	NYSE Arca
ISHARES CHINA LARGE-CAP ETF	USD	37.66	-2.49%	-2.91%	-9.19%	-18.89%	NYSE Arca
CONSUMER STAPLES SPDR	USD	68.80	-0.32%	-2.13%	-5.53%	2.00%	NYSE Arca
VANECK JUNIOR GOLD MINERS	USD	38.76	1.07%	-0.33%	-11.87%	-28.54%	NYSE Arca
SPDR BBG BARC HIGH YIELD BND	USD	108.83	-0.34%	-0.84%	-0.98%	-0.10%	NYSE Arca
VANGUARD REAL ESTATE ETF	USD	103.24	0.02%	-0.17%	-6.92%	21.56%	NYSE Arca
GRAYSCALE BITCOIN TRUST BTC	USD	39.13	5.22%	14.48%	-3.93%	22.28%	OTC US

USA Treasury Bonds Yield Curve (%)



Source: Bloomberg

Capital Market Laboratory Coordinator: Economist Bruno Bellido

Collaboration: María Camarena, Alonso García, Adrian Paredes y Jairo Valverde
email: pulsobursatil@ulima.edu.pe
facebook: www.facebook.com/pulsobursatil.u

LIMA

Stocks

Ticker	Currency	Price	1D*	5D*	30D*	YTD*	Frequency	Volume (US\$)	Beta	Dividend Yield (%)	Price Earning	Market Cap. (M US\$)	Economic Sector*	Index Weight
▲ ALICORC1 PE**	S/.	5.11	0.16%	0.65%	-0.08%	-8.83%	100.00%	191,531	1.01	16.34	10.51	1,055.30	Industrial	3.53%
▲ ATACOCB1 PE**	S/.	0.12	0.00%	-4.96%	18.56%	-16.67%	70.00%	2,547	1.10	0.00	-	26.30	Mining	1.02%
- BACKUSI1 PE**	S/.	17.10	0.00%	-2.84%	1.18%	-15.14%	80.00%	24,884	0.72	0.00	8.21	5,754.35	Industrial	0.82%
▼ BAP PE**	US\$	110.50	-2.69%	-2.90%	5.80%	-31.20%	100.00%	23,732	1.20	1.10	-	10,429.25	Diverse	5.82%
▼ BVN PE**	US\$	6.82	-0.87%	-6.58%	-9.07%	-43.17%	100.00%	88,296	1.09	0.00	-	1,876.60	Mining	5.88%
- CASAGRC1 PE**	S/.	5.30	0.00%	-1.12%	3.92%	11.58%	100.00%	7,514	1.28	14.11	4.83	108.07	Agricultural	1.31%
▲ BBVAC1 PE**	S/.	1.75	0.57%	0.00%	2.94%	-16.51%	80.00%	3,020	1.15	2.49	17.83	2,863.06	Finance	2.85%
▼ CORAREI1 PE**	S/.	1.05	-0.94%	-3.67%	-0.94%	17.98%	100.00%	7,866	1.22	26.25	2.08	356.45	Industrial	1.72%
- CPACASC1 PE**	S/.	4.50	0.00%	-1.32%	0.00%	-15.09%	90.00%	19,017	0.69	17.56	32.14	505.61	Industrial	2.38%
▼ CVERDEC1 PE**	US\$	16.50	-0.30%	-5.71%	2.48%	-21.13%	100.00%	55,483	1.39	3.46	7.38	5,775.92	Mining	5.25%
- ENGEPEC1 PE**	S/.	1.85	0.00%	-0.54%	-7.50%	-21.94%	70.00%	3,495	0.68	0.00	8.15	1,072.82	Public Services	1.44%
- ENDISPC1**	S/.	3.92	0.00%	-6.67%	22.50%	-27.41%	45.00%	2,228	0.80	0.00	8.63	605.95	Public Services	0.98%
▲ FERREYC1 PE**	S/.	1.69	0.60%	-1.17%	1.20%	-2.87%	100.00%	15,456	1.15	10.78	5.26	399.15	Diverse	4.90%
- AENZAC1 PE**	S/.	1.46	0.00%	0.69%	4.29%	-16.09%	90.00%	149,344	0.94	0.00	-	308.16	Diverse	4.05%
▲ IFS PE**	US\$	22.75	1.56%	1.70%	5.81%	-26.47%	100.00%	16,997	1.26	3.38	6.49	2,626.44	Diverse	7.22%
- INRETC1 PE**	US\$	33.42	0.00%	-0.54%	21.53%	-14.74%	100.00%	588,948	0.88	2.04	56.61	3,435.82	Diverse	5.28%
- LUSURC1 PE**	S/.	11.70	0.00%	-0.26%	10.90%	-54.12%	45.00%	3,577	#N/A N/A	0.00	12.68	1,379.17	Public Services	1.81%
- MINSUR11 PE**	S/.	2.65	0.00%	-1.85%	1.92%	43.24%	90.00%	28,999	0.99	0.00	3.19	1,849.42	Mining	3.09%
- PML PE**	US\$	0.12	0.00%	4.55%	35.29%	8.49%	60.00%	4,521	1.20	0.00	-	30.40	Mining	2.12%
▲ RELAPAC1 PE**	S/.	0.18	0.57%	0.00%	3.55%	153.62%	100.00%	8,603	0.98	0.00	3.11	352.42	Industrial	2.12%
▼ SCCO PE**	US\$	56.45	-1.14%	-4.34%	-9.97%	-14.34%	85.00%	28,235	0.77	4.78	14.91	43,640.44	Mining	2.14%
▼ SIDERC1 PE**	S/.	1.17	-1.68%	-2.50%	8.33%	8.53%	100.00%	5,399	0.90	30.26	3.06	198.26	Industrial	1.43%
▼ TV PE**	US\$	0.14	0.00%	-4.79%	-5.44%	-5.44%	90.00%	4,870	1.20	0.00	-	137.48	Mining	2.93%
- UNACEMC1 PE**	S/.	1.46	0.00%	0.00%	4.29%	-5.81%	100.00%	57,963	1.25	3.15	11.53	642.57	Industrial	3.00%
▼ VOLCABC1 PE**	S/.	0.58	-1.69%	-7.94%	11.54%	11.54%	100.00%	30,938	1.80	0.00	-	572.36	Mining	5.90%
- NEXAPEC1 PE**	S/.	2.90	0.00%	0.00%	-0.34%	2.47%	45.00%	12,144	1.14	0.00	7.84	925.83	Mining	1.56%

Quantity of shares: 26
 Source: Bloomberg, Económica
 * Bloomberg Industry Classification System
 ** PER is used in the stock market and original currency of the instrument
 *Legend: Variation 1D: 1 Day; 5D: 5 Days, 1M: 1 Month; YTD: Var.% 12/31/20 to date

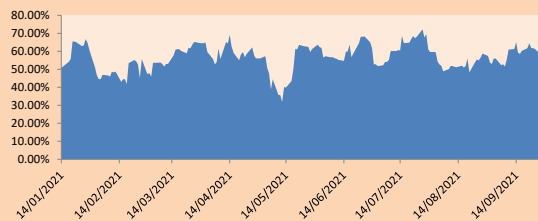
Sectorial Indices

	Close	1D*	5D*	30D*	YTD*	Beta
▼ S&P/BVLMining	361.95	-0.93%	-4.63%	-6.80%	-7.18%	0.77
▲ S&P/BVLConsumer	1,007.89	-0.34%	-1.60%	10.13%	-7.42%	0.87
▲ S&P/BVLIndustrials	195.99	0.20%	-0.09%	4.18%	2.85%	0.97
▼ S&P/BVLFinancials	831.75	-2.10%	-2.14%	7.60%	-19.55%	1.14
▲ S&P/BVLConstruction	212.06	0.03%	0.34%	5.55%	1.41%	0.89
- S&P/BVLPublicSvcs	512.25	0.00%	0.66%	3.41%	-16.59%	0.40
- S&P/BVLElectricUtil	500.09	0.00%	0.66%	3.41%	-16.58%	0.40

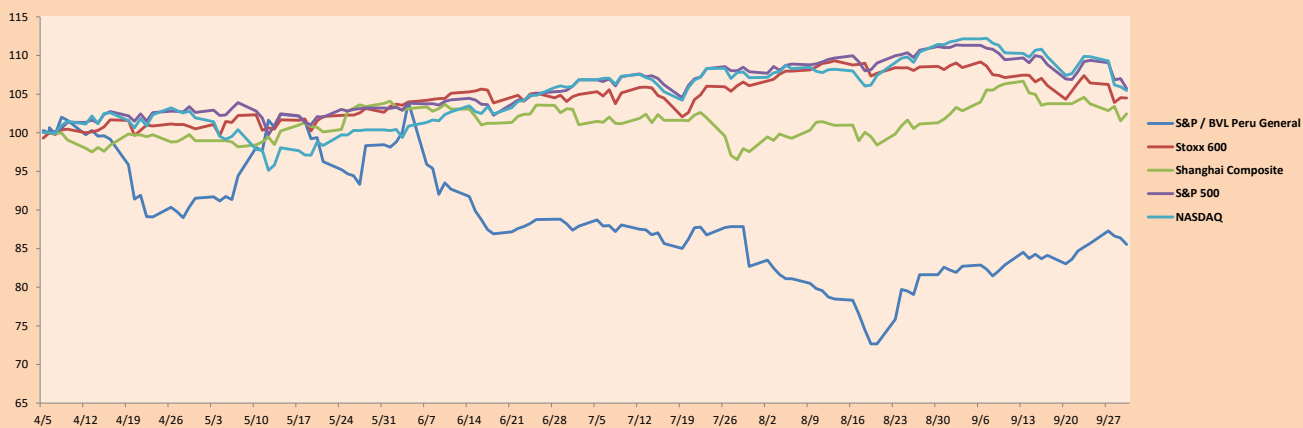
S&P/BVLConstructionTRPEN

*Legend: Variation 1D: 1 Day; 5D: 5 Days, 1M: 1 Month; YTD: Var.% 12/31/20 to date

Correlation Graph of Returns of Mining Index against Metallic Index of London (3 months)



Indices (6 months)



Base: 06/04/21=100
 Source: Bloomberg

Capital Market Laboratory Coordinator: Economist Bruno Bellido
 Collaboration: Maria Camarena, Alonso Garcia, Adrian Paredes y Jairo Valverde
 email: pulsobursatil@ulima.edu.pe
 facebook: www.facebook.com/pulsobursatil.ul

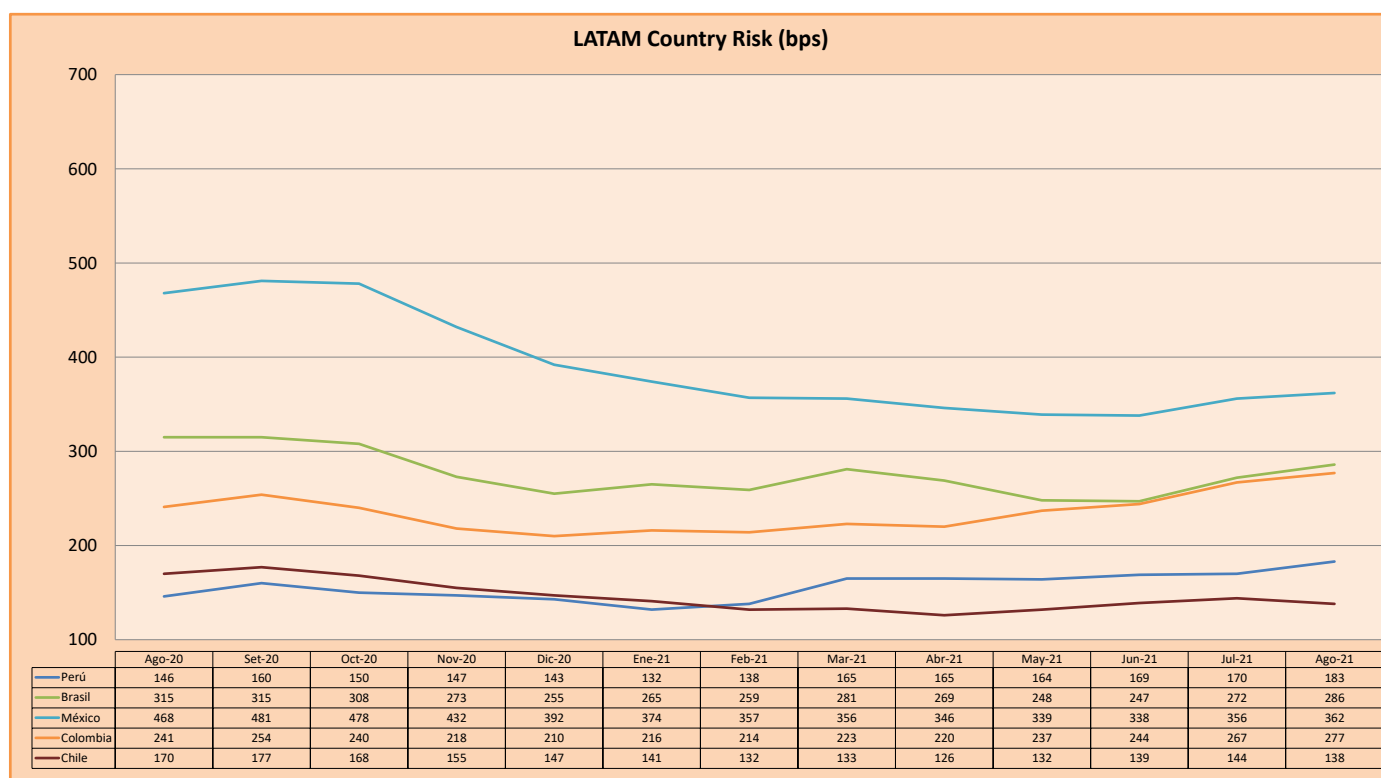
SOVEREIGN RATING

RISK RATINGS			
Moody's	S&P	Fitch	
Aaa	AAA	AAA	Prime
Aa1	AA+	AA+	High credit quality
Aa2	AA	AA	
Aa3	AA-	AA-	
A1	A+	A+	Medium-high grade, with low credit risk
A2	A	A	
A3	A-	A-	
Baa1	BBB+	BBB+	Moderate Credit Risk
Baa2	BBB	BBB	
Baa3	BBB-	BBB-	
Ba1	BB+	BB+	It has speculative elements and it is subject to substantial credit risk
Ba2	BB	BB	
Ba3	BB-	BB-	
B1	B+	B+	It is considered speculative and it has high credit risk
B2	B	B	
B3	B-	B-	
Caa1	CCC+	CCC	Bad credit conditions and it is subject to high credit risk
Caa2	CCC		
Caa3	CCC-		
Ca	CC	DDD	Very close to default or in default
C	C		
	D		

Source: Bloomberg

Latin America Credit Rating			
Clasificadora de riesgo			
Country	Moody's	Fitch	S&P
Peru	Baa1	BBB+	BBB+
México	Ba2	BB-	BB-
Venezuela	C	WD	NR
Brazil	Ba2	BB-	BB-
Colombia	Baa2	BB+	BB+
Chile	A1	A-	A
Argentina	Ca	WD	CCC+
Panama	Baa2	BBB-	BBB

Source: Bloomberg



Source: BCRP

Capital Market Laboratory Coordinator: Economist Bruno Bellido
Collaboration: Maria Camarena, Alonso García, Adrian Paredes y Jairo Valverde
email: pulsobursatil@ulima.edu.pe
facebook: www.facebook.com/pulsobursatil.ul