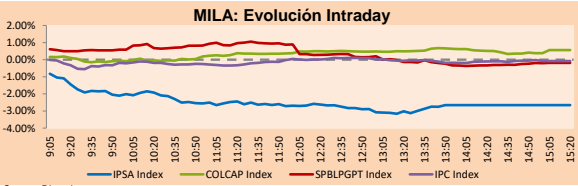


MILA

Lima, October 13, 2021

Main Indexes	Close	1 D	5 D	1 M	YTD	Cap. Burs. (US\$ bill)
▼ IPSA (Chile)	4,006.49	-2.36%	-5.20%	-8.97%	-4.09%	96.49
▼ IGPA (Chile)	20,075.97	-2.23%	-4.87%	-8.78%	-4.43%	116.12
▼ COLSC (Colombia)	987.01	-1.04%	1.06%	2.60%	-6.80%	4.84
▲ COLCAP (Colombia)	1,394.22	0.56%	0.89%	6.23%	-3.04%	83.43
▼ S&P/BVL (Perú)*	19,694.91	-0.19%	7.37%	9.03%	-5.41%	90.12
▲ S&P/BVL SEL (Perú)	515.90	0.33%	6.65%	9.35%	-6.44%	81.77
▲ S&P/BVL LIMA 25	26,446.05	0.08%	6.82%	9.10%	4.95%	89.01
▼ IPC (México)	51,812.87	-0.04%	1.64%	0.61%	17.55%	312.47
▼ S&P MILA 40	455.63	-0.62%	1.32%	-1.93%	-14.78%	6,421.98

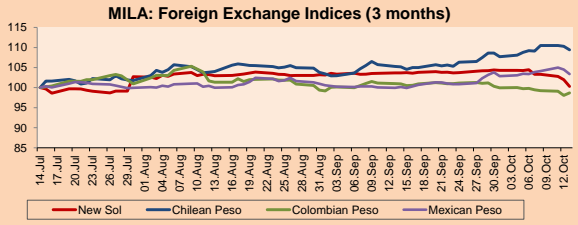
*Legend: Variation 1D: 1 day; 5D: 5 days; 1M: 1 Month; YTD: Var% 12/31/20 to date



Source: Bloomberg

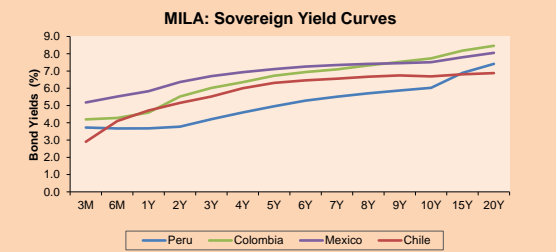
Currency	Price	1D*	5D*	30 D*	YTD*
▼ Sol (PEN)	3,9722	-1.68%	-4.00%	-3.26%	9.79%
▼ Chilean Peso (CLP)	816.07	-0.78%	0.19%	3.94%	14.65%
▲ Colombian Peso (COP)	3,744.40	0.62%	-1.14%	-2.32%	9.17%
▼ Mexican Peso (MXN)	20.55	-1.09%	-0.01%	3.42%	3.21%

*Legend: Variation 1D: 1 day; 5D: 5 days; 1M: 1 Month; YTD: Var% 12/31/20 to date



Base: 14/07/21=100
Source: Bloomberg

Fixed Income	Currency	Price	Bid Yield (%)	Ask Yield (%)	Duration
PERU 7.35 07/21/25	USD	120.901	1.65	1.54	3.34
PERU 4.125 08/25/27	USD	110.747	2.21	2.12	5.27
PERU 8.75 11/21/33	USD	155.483	3.22	3.15	8.39
PERU 6.55 03/14/37	USD	136.433	3.51	3.45	10.21
PERU 5.625 11/18/2050	USD	136.646	3.60	3.58	16.25
CHILE 2.25 10/30/22	USD	101.903	0.63	0.21	1.02
CHILE 3.125 01/21/26	USD	106.725	1.54	1.45	4.01
CHILE 3.625 10/30/42	USD	104.599	3.32	3.32	14.86
COLOM 11.85 03/09/28	USD	154.739	2.69	2.37	4.97
COLOM 10.375 01/28/33	USD	146.923	4.97	4.85	7.48
COLOM 7.375 09/18/37	USD	124.786	5.12	5.05	10.12
COLOM 6.125 01/18/41	USD	112.124	5.15	5.10	11.70
MEX 4 10/02/23	USD	112.124	5.153	5.1	11.7
MEX 5.55 01/45	USD	117.746	4.35	4.31	13.85



Source: Bloomberg

Equity

Largest gains	Exchange	Currency	Price	▲ %
ALICORP-C	Peru	PEN	5.90	5.17
FERREYCORP SAA	Peru	PEN	1.91	3.24
GRUPO BIMBO-A	Mexico	MXN	56.87	2.39
MEGACABLE-CPO	Mexico	MXN	61.44	2.18
CEMENTOS ARGOS	Colombia	COP	6370.00	1.92

Per Turnover	Exchange	Amount (US\$)
INRETAIL PERU CO	Peru	84,848,220
AMERICA MOVIL-L	Mexico	59,859,434
WALMART DE MEXIC	Mexico	47,238,345
GRUPO F BANORT-O	Mexico	41,131,297
CEMEX SAB-CPO	Mexico	34,912,230

Largest losses	Exchange	Currency	Price	▼ %
CENCOSUD SA	Chile	CLP	1210	-18.02
COLBUN SA	Chile	CLP	62.94	-7.44
SONDA SA	Chile	CLP	286.85	-5.71
EMPRESAS COPEC	Chile	CLP	5899	-4.53
BANCO SANTANDER	Chile	CLP	35.71	-4.03

Per Volume	Exchange	Volume
ITAU CORPBANCA	Chile	775,861,621
BANCO SANTANDER	Chile	261,584,216
COLBUN SA	Chile	129,012,198
BANCO DE CHILE	Chile	115,298,978
AMERICA MOVIL-L	Mexico	67,691,412

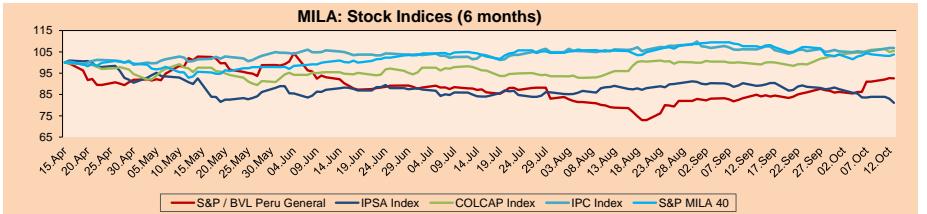
MILA

Peru: The General Index of the BVL ended today's session with a negative result of -0.19%. The index maintains an annual accumulated negative trend of -5.41% in local currency, while the adjusted return in dollars amounts to -13.85%. Then, the S&P / BVL Peru SEL changed by + 0.33% while the S&P / BVL LIMA 25 by + 0.08%. The PEN spot reached \$ / 3.9722. Headline: Exchange rate is trading below \$ / 4. Why this fall in the price of the dollar?

Chile: The IPSA index ended the day with a negative return of -2.36%. The most affected sectors of the day were Information Technology (-5.71%) and Energy (-4.53%). The worst performing stocks were Cencosud SA (-18.02%) and Colbun SA (-7.44%). Headline: Dollar in Chile falls below \$ 820 in a key day for the Central Bank and inflation.

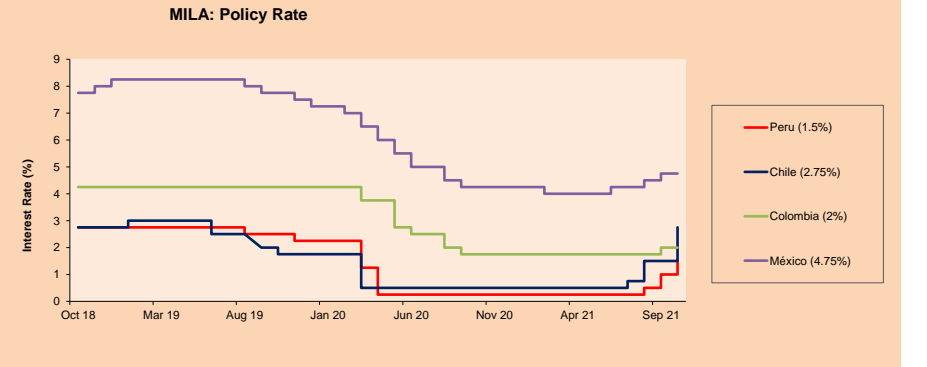
Colombia: The COLCAP index closed today with a positive return of + 0.56%. The sectors that benefited the most from the conference were Finance (+ 1.14%) and Materials (+ 0.56%). The worst performing stocks were Bancolombia SA (+ 2.03%) and Cementos Argos SA (+ 1.92%). Headline: High inflation and productivity will stir discussion of the minimum wage.

Mexico: The IPC index closed the day with a negative return of -0.04%. The most affected sectors of the day were Health (-2.80%) and Industrial (-0.85%). The worst performing stocks were Genomma Lab Internacional SAB (-2.80%) and Grupo Aeroportuario del Sureste (-2.08%) Headline: Rate hikes 'are not magic' and effects on inflation will be seen until 2022: Health.



Base: 16/04/21=100
Source: Bloomberg

ETFs	Curr.	Close	1D	5D	30 D	YTD	Exchange
▲ iShares MSCI All Peru Caped Index Fund	USD	28.61	0.49%	8.04%	5.30%	-17.50%	NYSE Arca
▼ iShares MSCI All Chile Caped Index Fund	USD	23.92	-1.73%	-3.70%	-12.92%	-20.82%	Cboe BZX
▼ Global X MSCI Colombia	USD	10,8066	-0.20%	2.92%	7.69%	-4.87%	NYSE Arca
▲ iShares MSCI Mexico Capped	USD	48.8	0.99%	1.60%	-2.73%	13.51%	NYSE Arca
▲ iShares MSCI Emerging Markets	USD	51.16	1.39%	3.02%	-2.79%	-0.99%	NYSE Arca
▲ Vanguard FTSE Emerging Markets	USD	51.17	1.31%	3.10%	-2.90%	2.12%	NYSE Arca
▲ iShares Core MSCI Emerging Markets	USD	62.76	1.42%	2.92%	-2.53%	1.16%	NYSE Arca
▲ iShares JP Morgan Emerging Markets Bonds	USD	63.43	0.99%	1.85%	-1.05%	3.85%	Cboe BZX
▲ Morgan Stanley Emerging Markets Domestic	USD	5.85	0.69%	0.00%	-7.14%	-7.00%	New York



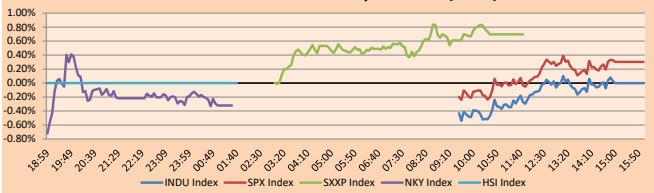
Source: Bloomberg

WORLD

Main Indices	Close	1 D*	5 D*	1 M*	YTD*	Market Cap. (US\$ Mill.)
Dow Jones (USA)	34,377.81	0.00%	-0.11%	-1.41%	12.32%	10,677,608
Standard & Poor's 500 (EULU)	4,363.80	0.30%	0.01%	-2.35%	16.18%	38,542,627
NASDAQ Composite (USA)	14,571.63	0.73%	0.48%	-3.53%	13.06%	24,480,616
Stoxx EUROPE 600 (Europe)	460.39	0.70%	2.01%	-1.55%	15.38%	11,069,769
DAX (Germany)	15,249.38	0.68%	1.84%	-3.01%	11.16%	1,415,808
FTSE 100 (United Kingdom)	7,141.82	0.16%	2.09%	1.53%	10.55%	1,510,713
CAC 40 (France)	6,597.38	0.75%	1.61%	-0.84%	18.84%	1,869,927
IBEX 35 (Spain)	8,881.40	-0.61%	1.21%	1.15%	10.00%	509,979
MSCI AC Asia Pacific Index	194.84	0.28%	1.79%	-5.34%	-2.54%	26,755,686
HANG SENG (Hong Kong)	24,962.59	-1.43%	3.56%	-3.30%	-8.33%	3,858,422
SHANGHAI SE Comp. (China)	3,561.76	0.42%	0.72%	-2.75%	2.55%	7,177,853
NIKKEI 225 (Japan)	28,140.28	-0.32%	2.22%	-8.25%	2.54%	4,133,407
S&P/ASX 200 (Australia)	7,272.54	-0.11%	0.92%	-1.55%	11.16%	1,719,191
KOSPI (South Korea)	2,944.41	-0.04%	1.64%	-8.49%	2.47%	1,734,427

*Legend: Variation 1D: 1 Day; 5D: 5 Days; 1M: 1 Month; YTD: Var.% 12/31/20 to date

Global Markets: Intraday Evolution (var %)

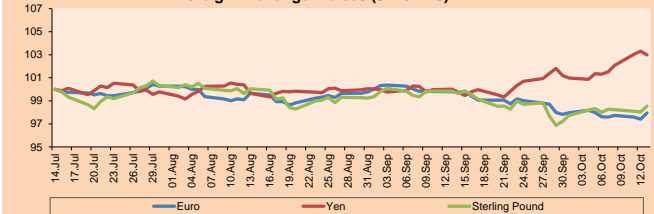


Source: Bloomberg

Currency	Price	1 D*	5 D*	1 M*	YTD*
Euro	1.1594	0.56%	0.33%	-1.84%	-6.09%
Yen	113.2500	-0.32%	1.65%	2.96%	9.69%
Sterling Pound	1.3659	0.52%	0.57%	-1.29%	-0.08%
Yuan	6.4284	-0.32%	-0.25%	-0.36%	-1.51%
Hong Kong Dollar	7.7794	-0.03%	-0.09%	-0.01%	0.34%
Brazilian Real	5.5154	-0.43%	0.42%	5.74%	6.10%
Argentine Peso	99.1249	0.03%	0.21%	0.96%	17.80%

*Legend: Variation 1D: 1 Day; 5D: 5 Days; 1M: 1 Month; YTD: Var.% 12/31/20 to date

Foreign Exchange Indices (3 months)

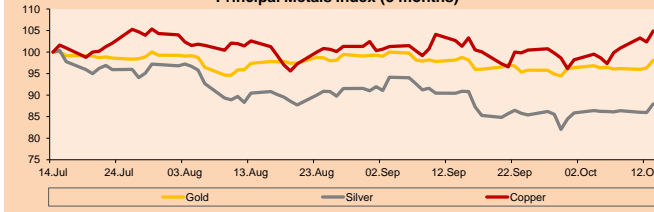


Base: 14/07/21=100
Source: Bloomberg

Commodities	Close	1 D*	5 D*	1 M*	YTD*
Oro (US\$ Oz. T) (LME)	1,792.97	1.86%	1.71%	-0.04%	-5.55%
Plata (US\$ Oz. T) (LME)	23.09	2.35%	2.07%	-2.72%	-12.53%
Cobre (US\$ TM) (LME)	9,759.50	2.52%	7.81%	2.19%	25.95%
Zinc (US\$ TM) (LME)	3,425.75	4.97%	14.08%	11.64%	25.52%
Petróleo WTI (US\$ Barril) (NYM)	80.44	-0.25%	3.89%	14.60%	68.11%
Estanto (US\$ TM) (LME)	37,568.33	0.02%	3.25%	9.71%	82.86%
Plomo (US\$ TM) (LME)	2,310.25	2.54%	5.55%	0.65%	16.93%
Azúcar #11 (US\$ Libra) (NYB-ICE)	19.86	-1.05%	0.46%	0.86%	39.17%
Café (US\$ TM) (NYB-ICE)	2,602.00	-2.73%	-4.16%	-1.33%	4.00%
Café Arábica (US\$ TM) (NYB-ICE)	208.65	-2.11%	7.86%	11.70%	54.78%

*Legend: Variación 1D: 1 Día; 5D: 5 Días; 1M: 1 Mes; YTD: Var.% 31/12/20 a la fecha

Principal Metals Index (3 months)



Base: 14/07/21=100
Source: Bloomberg

Equity

Germany (Stocks from DAX Index)

Largest gains	Curr.	Price	▲%	Exchange	Largest losses	Curr.	Price	▼%	Exchange
ENR GY	EUR	23.42	2.14	Xetra	ALV GY	EUR	195.08	-1.38	Xetra
PUM GY	EUR	99.46	2.12	Xetra	BAW GY	EUR	47.085	-1.32	Xetra
MRK GY	EUR	191.5	2.02	Xetra	HEI GY	EUR	62.62	-1.11	Xetra
IFX GY	EUR	35.98	1.80	Xetra	AIR GY	EUR	111.96	-1.03	Xetra

Europe (Stocks from STOXX EUROPE 600)

Largest gains	Curr.	Price	▲%	Exchange	Largest losses	Curr.	Price	▼%	Exchange
GLPG NA	EUR	46.6	8.51	EN Amsterdam	CBK GY	EUR	6.025	-5.52	Xetra
SPIE FP	EUR	21.3	8.45	EN Paris	ALE PW	PLN	51.5	-5.50	Warsaw
ALIF SS	SEK	331	8.17	Stockholm	CNA LN	Gbp	58.3	-4.55	Londres
EMG LN	Gbp	218.2	7.59	Londres	CABK SQ	EUR	2.617	-4.31	Soc.Bol SIBF

Global Overview:

United States:

The U.S. market closes with mixed returns as the Fed announced that it may normalize policy through a gradual tapering process in mid-November. This process could involve a monthly reduction of \$10 billion in Treasuries and \$5 billion in mortgage-backed securities. The DOW JONES index closed in negative territory due to a higher consumer price index in September in the face of supply chain disruptions. The index rose 0.4% for the month and 5.4% year-over-year, reaching the highest point since 2008. Meanwhile, the S&P 500 finished higher on gains in mega-cap growth stocks, such as Amazon +1.14% and Microsoft +1.17%. Among the session's best stocks was BlackRock +3.78%, as it beat quarterly estimates on higher charges in asset deals. Finally, the NASDAQ index ended with gains thanks to momentum in technology stocks, especially by Jasper Therapeutics. The biotech company rose +105.13% after an Oppenheimer analyst gave it an outperformer rating and a \$21 price target, 191% higher than Tuesday's closing price. Thus, DOW JONES -0.0015%; S&P 500 +0.30%; NASDAQ +0.73% ended the day with mixed results.

Europe

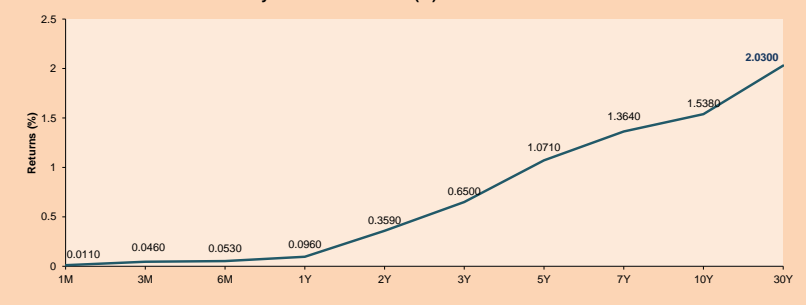
Major European indices ended the session with positive returns, as early quarterly earnings reports boosted investors' confidence, causing them to ignore concerns about global growth and inflation. The pan-European STOXX 600 index posted a bullish result, closing at a two-week high. The top sector was the technology sector, with +2.6%. On the other hand, the banking sector's -1.6% decline affected the index's final result. In the UK, stocks closed higher following corporate reports. On the economic data front, investors digested the monthly GDP report, which showed 0.4% growth in September. In equities, Reuters highlights Barratt Developments +6.29%, after reporting sales above pre-pandemic levels. In Germany, the main index closed higher, driven by technology stocks. SAP SE reported an increase of +3.90% after raising its outlook for the rest of the year. In France, stocks reported an uptrend, following the first batch of Q3 corporate earnings. Technology stock Capgemini +4.04% after the sector benefited from the rest of the sector's results. In turn, luxury stock LVMH +3.16% after reporting growth in all its business groups during 3Q 2021. Thus, FTSE 100 +0.16%; CAC 40 +0.75%; DAX +0.68%; STOXX 600 +0.70% all ended in negative levels.

Asia:

The major Asian indices closed with mixed returns as investors are weighing the impact of high inflation in light of the economic recovery and awaiting corporate earnings reports. The Chinese market closed with positive returns after a recovery in cyclical. The sectors that benefited the most were First Needs Products + 2.62%, Non-Basic Consumer Products + 2.53% and Information Technology + 2.46%. On the other hand, the Hong Kong market was closed due to a typhoon. Meanwhile, the Japanese market closed with a negative performance due to concerns about future releases of the consumer and producer price index this Thursday. The most affected sectors were Materials -1.20%, Public Services -1.06% and Information Technology -1.06%. Lastly, the Australian market closed at a loss as investors are also nervously awaiting the release of corporate earnings to be released later in the week and the possibility that central banks prepare to start downsizing. Thus, NIKKEI -0.32%; SHANGHAI COMPOSITE + 0.42%; HANG SENG -1.43%; CSI 300 + 1.15%; S & P / ASX 200 -0.11% and KOSPI +0.96% finished with mixed returns.

ETFs	Curr.	Close	1D	5D	30 D	YTD	Exchange
SPDR S&P 500 ETF TRUST	USD	435.18	0.36%	0.06%	-2.55%	16.40%	NYSE Arca
ISHARES MSCI EMERGING MARKET	USD	51.16	1.39%	3.02%	-2.79%	-0.99%	NYSE Arca
ISHARES IBOXX HIGH YLD CORP	USD	86.88	0.27%	-0.15%	-1.33%	-0.48%	NYSE Arca
FINANCIAL SELECT SECTOR SPDR	USD	38.29	-0.57%	-0.80%	0.74%	29.88%	NYSE Arca
VANECK GOLD MINERS ETF	USD	32.15	3.24%	5.97%	5.12%	-10.74%	NYSE Arca
ISHARES RUSSELL 2000 ETF	USD	222.57	0.47%	1.23%	-0.14%	13.52%	NYSE Arca
SPDR GOLD SHARES	USD	167.59	1.78%	1.55%	-0.09%	-6.04%	NYSE Arca
ISHARES 20+ YEAR TREASURY BO	USD	145.34	0.97%	0.66%	-2.65%	-7.86%	NASDAQ GM
INVESCO QQQ TRUST SERIES 1	USD	360.00	0.80%	0.09%	-4.34%	14.74%	NASDAQ GM
ISHARES BIOTECHNOLOGY ETF	USD	155.59	0.58%	1.08%	-8.65%	2.71%	NASDAQ GM
ENERGY SELECT SECTOR SPDR	USD	56.36	-0.09%	3.49%	14.65%	48.71%	NYSE Arca
PROSHARES ULTRA VIX ST FUTUR	USD	19.79	-2.85%	-11.81%	-12.32%	-81.42%	Choe BX
UNITED STATES OIL FUND LP	USD	56.16	0.09%	3.69%	13.50%	70.13%	NYSE Arca
ISHARES MSCI BRAZIL ETF	USD	32.57	1.62%	1.75%	-7.86%	-12.14%	NYSE Arca
SPDR S&P OIL & GAS EXP & PR	USD	104.24	-0.42%	4.15%	19.65%	78.19%	NYSE Arca
UTILITIES SELECT SECTOR SPDR	USD	65.07	1.17%	-0.81%	-4.77%	3.78%	NYSE Arca
ISHARES US REAL ESTATE ETF	USD	105.76	0.70%	1.64%	-1.60%	23.48%	NYSE Arca
SPDR S&P BIOTECH ETF	USD	125.01	0.32%	2.22%	-4.63%	-11.20%	NYSE Arca
ISHARES IBOXX INVESTMENT GRA	USD	133.07	0.51%	0.05%	-1.87%	-3.66%	NYSE Arca
ISHARES JPMORGAN US EMERGI	USD	109.59	0.63%	0.54%	-3.06%	-5.45%	NASDAQ GM
REAL ESTATE SELECT SECT SPDR	USD	45.54	0.57%	1.07%	-3.33%	24.56%	NYSE Arca
ISHARES CHINA LARGE-CAP ETF	USD	40.50	2.02%	6.52%	-2.36%	-12.77%	NYSE Arca
CONSUMER STAPLES SPDR	USD	70.19	0.19%	0.53%	-2.60%	4.06%	NYSE Arca
VANECK JUNIOR GOLD MINERS	USD	43.15	3.48%	7.98%	1.84%	-20.45%	NYSE Arca
SPDR EBO BARC HIGH YIELD BND	USD	108.52	0.23%	0.15%	-1.32%	-0.39%	NYSE Arca
VANGUARD REAL ESTATE ETF	USD	105.18	0.73%	1.61%	-1.81%	23.84%	NYSE Arca
GRAYSCALE BITCOIN TRUST BTC	USD	44.65	5.18%	4.37%	24.97%	39.53%	OTC US

USA Treasury Bonds Yield Curve (%)



Source: Bloomberg

LIMA

Stocks

Ticker	Currency	Price	1D*	5D*	30D*	YTD*	Frequency	Volume (US\$)	Beta	Dividend Yield (%)	Price Earning	Market Cap. (M US\$)	Economic Sector*	Index Weight
▼ ALICORC1 PE**	S/.	5.90	-1.04%	1.06%	2.60%	-6.80%	100.00%	1,396,680	1.01	14.15	12.14	1,266.35	Industrial	3.53%
▲ ATACOBC1 PE**	S/.	0.13	8.70%	8.70%	2.46%	-9.42%	42.11%	1,101	1.08	0.00	-	29.73	Mining	1.02%
▼ BACKUS11 PE**	S/.	18.45	-0.11%	8.21%	5.43%	-8.44%	84.21%	20,728	0.73	5.07	8.85	6,178.01	Industrial	0.82%
▼ BAP PE**	US\$	129.58	-0.32%	12.68%	20.76%	-19.32%	100.00%	707,395	1.21	0.94	-	12,230.06	Diverse	5.82%
▼ BVN PE**	US\$	8.20	1.86%	20.59%	11.72%	-31.67%	100.00%	135,565	1.11	0.00	-	2,256.33	Mining	5.88%
▼ CASAGRC1 PE**	S/.	5.15	-4.63%	-2.83%	-5.68%	8.42%	94.74%	19,659	1.26	19.13	4.69	109.21	Agricultural	1.31%
▲ BBVAC1 PE**	S/.	1.95	0.52%	9.55%	15.38%	-6.97%	89.47%	122,764	1.17	2.33	19.87	3,317.81	Finance	2.85%
▲ CORARE11 PE**	S/.	1.17	0.86%	8.33%	4.46%	31.46%	100.00%	74,547	1.20	23.56	2.31	388.06	Industrial	1.72%
▼ CPACASC1 PE**	S/.	4.50	-1.32%	1.58%	-2.17%	-15.09%	89.47%	154,695	0.69	17.56	32.14	525.82	Industrial	2.38%
▲ CVERDEC1 PE**	US\$	17.70	1.14%	7.93%	5.73%	-15.39%	100.00%	380,715	1.36	3.23	7.91	6,195.99	Mining	5.25%
- ENGEPEC1 PE**	S/.	1.92	0.00%	4.35%	7.26%	-18.99%	52.63%	30	0.69	0.00	8.46	1,157.92	Public Services	1.44%
- ENDISPC1**	S/.	3.92	0.00%	0.00%	3.16%	-27.41%	31.58%	209	0.80	0.00	8.63	630.17	Public Services	0.98%
▲ FERREYC1 PE**	S/.	1.91	3.24%	12.35%	12.35%	9.77%	100.00%	1,192,042	1.16	9.53	5.94	469.15	Diverse	4.90%
▲ AENZAC1 PE**	S/.	1.43	-2.05%	-2.05%	5.93%	-17.82%	84.21%	114,404	0.90	0.00	-	313.89	Diverse	4.05%
- IFS PE**	US\$	24.30	0.00%	10.45%	8.48%	-21.46%	100.00%	100,049	1.27	3.17	6.66	2,805.38	Diverse	7.22%
▲ INRETC1 PE**	US\$	35.50	1.14%	6.29%	11.46%	-9.44%	100.00%	84,848,220	0.90	1.92	57.78	3,649.66	Diverse	5.28%
▲ LUSURC1 PE**	S/.	12.20	2.52%	3.39%	5.17%	-52.16%	52.63%	4,876	#N/A N/F	8.52	13.22	1,495.60	Public Services	1.81%
▲ MINSURI1 PE**	S/.	2.87	0.70%	10.38%	7.09%	55.14%	78.95%	16,279	0.98	11.64	3.60	2,083.03	Mining	3.09%
▲ PML PE**	US\$	0.13	6.56%	13.04%	13.04%	22.64%	57.89%	46,336	1.20	0.00	-	34.37	Mining	2.12%
▼ RELAPAC1 PE**	S/.	0.15	-15.03%	-16.48%	-16.00%	113.04%	100.00%	1,298	0.92	0.00	2.72	307.87	Industrial	2.12%
▲ SCCO PE**	US\$	59.44	0.80%	5.02%	-3.18%	-9.80%	84.21%	38,309	0.77	4.54	15.70	45,951.95	Mining	2.14%
▼ SIDERC1 PE**	S/.	1.24	-0.80%	5.08%	12.73%	15.03%	94.74%	30,780	0.90	28.55	3.24	218.52	Industrial	1.43%
- TV PE**	US\$	0.17	0.00%	24.09%	12.58%	15.65%	89.47%	57,313	1.20	0.00	-	168.15	Mining	2.93%
▲ UNACEMC1 PE**	S/.	1.53	2.00%	4.79%	6.99%	-1.29%	100.00%	100,962	1.20	3.01	12.08	700.30	Industrial	3.00%
- VOLCABC1 PE**	S/.	0.61	0.00%	5.17%	0.00%	17.31%	100.00%	478,875	1.74	0.00	-	626.03	Mining	5.90%
▲ NEXAPEC1 PE**	S/.	3.00	4.53%	7.91%	3.45%	6.01%	42.11%	136,197	1.12	0.00	8.44	957.20	Mining	1.56%

Quantity of shares: 26
 Source: Bloomberg, Económica
 * Bloomberg Industry Classification System
 ** PER is used in the stock market and original currency of the instrument
 *Legend: Variation 1D: 1 Day; 5D: 5 Days, 1M: 1 Month; YTD: Var.% 12/31/20 to date

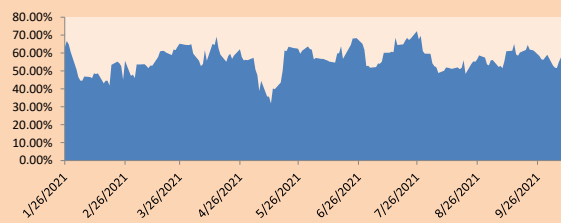
Sectorial Indices

	Close	1D*	5D*	30D*	YTD*	Beta
▼ S&P/BVLMining	378.98	-0.33%	4.67%	-1.99%	-2.81%	0.75
▲ S&P/BVLConsumer	1,080.79	1.40%	6.46%	12.00%	-0.72%	0.86
▲ S&P/BVLIndustrials	205.64	0.71%	4.92%	7.51%	7.91%	0.91
▼ S&P/BVLFinancials	927.83	-1.69%	7.95%	16.54%	-10.26%	1.17
▲ S&P/BVLConstruction	217.18	0.11%	2.67%	6.44%	3.85%	0.81
▲ S&P/BVLPublicSvcs	530.26	1.18%	3.68%	7.86%	-13.65%	0.42
▲ S&P/BVLElectricUtil	517.67	1.18%	3.68%	7.86%	-13.65%	0.42

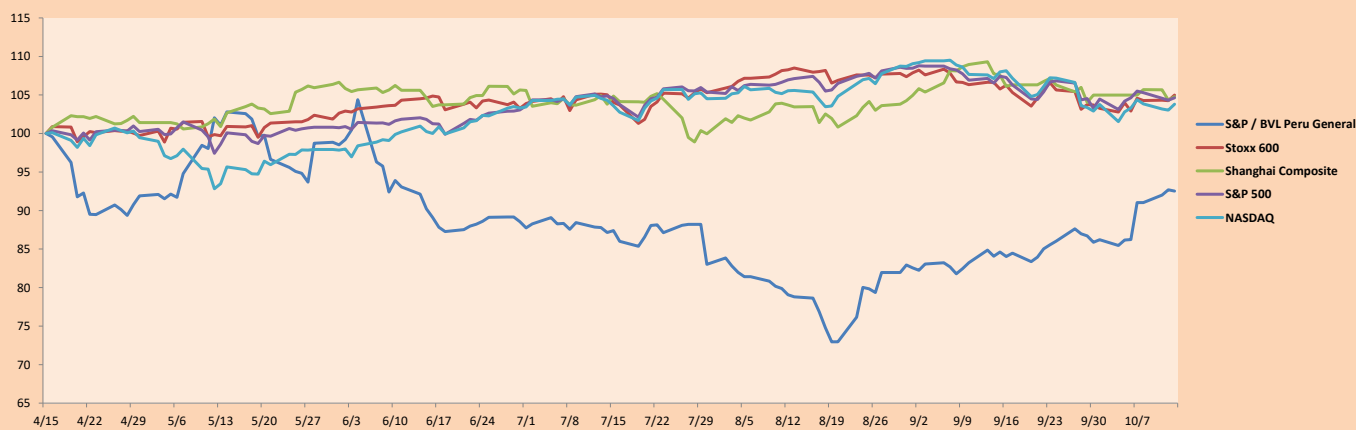
S&P/BVLConstructionTRPEN

*Legend: Variation 1D: 1 Day; 5D: 5 Days, 1M: 1 Month; YTD: Var.% 12/31/20 to date

Correlation Graph of Returns of Mining Index against Metallic Index of London (3 months)



Indices (6 months)



Base: 15/04/21=100
 Source: Bloomberg

Capital Market Laboratory Coordinator: Economist Bruno Bellido
 Collaboration: Maria Camarena, Alonso García, Adrian Paredes y Jairo Valverde
 email: pulsobursatil@ulima.edu.pe
 facebook: www.facebook.com/pulsobursatil.ul

SOVEREIGN RATING

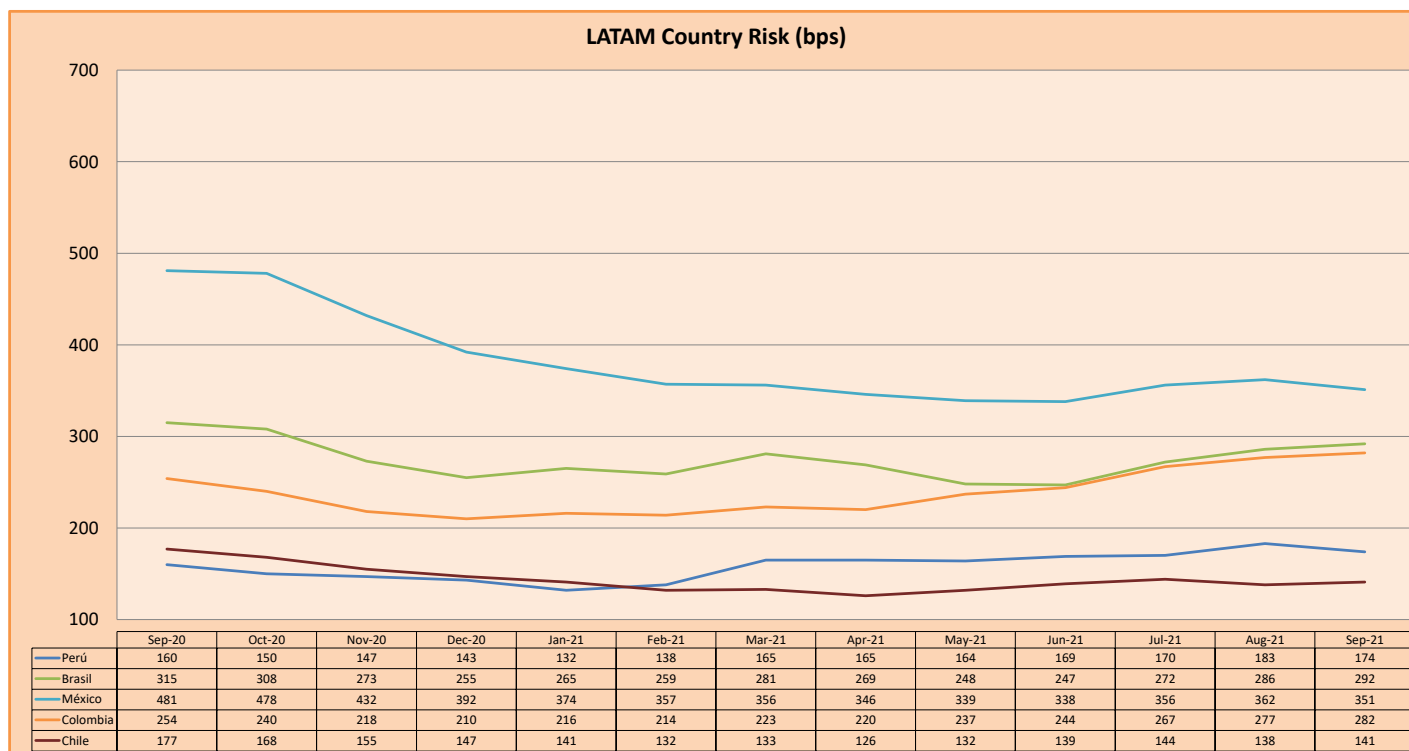
RISK RATINGS

Moody's	S&P	Fitch	
Aaa	AAA	AAA	Prime
Aa1	AA+	AA+	High credit quality
Aa2	AA	AA	
Aa3	AA-	AA-	
A1	A+	A+	Medium-high grade, with low credit risk
A2	A	A	
A3	A-	A-	
Baa1	BBB+	BBB+	Moderate Credit Risk
Baa2	BBB	BBB	
Baa3	BBB-	BBB-	
Ba1	BB+	BB+	It has speculative elements and it is subject to substantial credit risk
Ba2	BB	BB	
Ba3	BB-	BB-	
B1	B+	B+	It is considered speculative and it has high credit risk
B2	B	B	
B3	B-	B-	
Caa1	CCC+	CCC	Bad credit conditions and it is subject to high credit risk
Caa2	CCC		
Caa3	CCC-		
Ca	C	DDD	Very close to default or in default
C	D		

Source: Bloomberg

Latin America Credit Rating			
Clasificadora de riesgo			
Country	Moody's	Fitch	S&P
Peru	Baa1	BBB+	BBB+
México	Ba2	BB-	BB-
Venezuela	C	WD	NR
Brazil	Ba2	BB-	BB-
Colombia	Baa2	BB+	BB+
Chile	A1	A-	A
Argentine	Ca	WD	CCC+
Panama	Baa2	BBB-	BBB

Source: Bloomberg



Source: BCRP

Capital Market Laboratory Coordinator: Economist Bruno Bellido
Collaboration: María Camarena, Alonso García, Adrian Paredes y Jairo Valverde
email: pulsobursatil@ulima.edu.pe
facebook: www.facebook.com/pulsobursatil.ul