

PULSO BURSÁTIL

FACULTAD DE CIENCIAS EMPRESARIALES Y ECONÓMICAS
CARRERA DE ECONOMÍA
LABORATORIO DE MERCADO DE CAPITALES

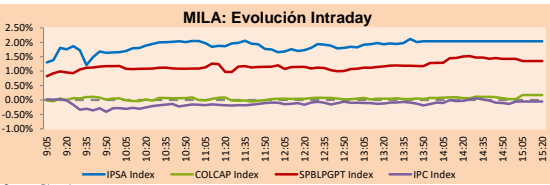


MILA

Lima, October 25, 2021

Main Indexes	Close	1 D	5 D	1 M	YTD	Cap. Burs. (US\$ bill)
▲ IPSA (Chile)	4,175.95	2.24%	4.17%	-4.60%	-0.03%	95.42
▲ IGPA (Chile)	20,851.45	2.07%	4.01%	-4.52%	-0.74%	115.07
▲ COLSC (Colombia)	975.10	0.64%	-0.14%	1.66%	-7.92%	4.62
▲ COLCAP (Colombia)	1,402.04	0.17%	-1.69%	7.08%	-2.49%	83.07
▲ S&P/BVL (Perú)*	21,243.06	1.35%	3.33%	16.03%	2.02%	95.46
▲ S&P/BVL SEL (Perú)	562.25	1.45%	3.71%	16.54%	1.97%	86.78
▲ S&P/BVL LIMA 25	29,189.99	1.73%	3.98%	16.92%	15.84%	94.28
▼ IPC (México)	51,833.80	-0.11%	-1.62%	1.42%	17.63%	320.62
▲ S&P MILA 40	471.04	1.78%	1.73%	2.87%	-11.89%	6,467.44

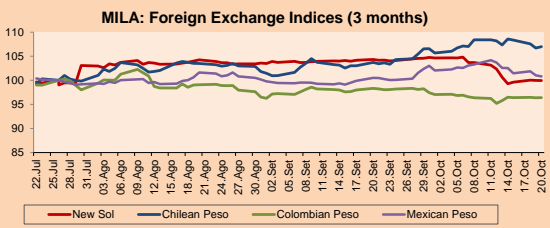
*Legend: Variation 1D: 1 day; 5D: 5 days; 1M: 1 Month; YTD: Var% 12/31/20 to date



Source: Bloomberg

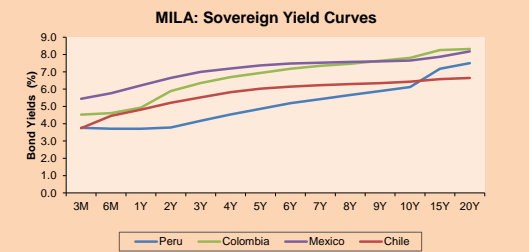
Currency	Price	1D*	5D*	30 D*	YTD*
▲ Sol (PEN)	3,973.34	0.18%	0.60%	-3.31%	9.82%
▼ Chilean Peso (CLP)	808.08	-0.97%	-1.19%	1.90%	13.53%
▼ Colombian Peso (COP)	3,767.80	-0.17%	-0.07%	-1.82%	9.86%
▼ Mexican Peso (MXN)	20.17	-0.04%	-1.17%	0.59%	1.29%

*Legend: Variation 1D: 1 day; 5D: 5 days; 1M: 1 Month; YTD: Var% 12/31/20 to date



Base: 26/07/21=100
Source: Bloomberg

Fixed Income	Currency	Price	Bid Yield (%)	Ask Yield (%)	Duration
PERU 7.35 07/21/25	USD	120.746	1.67	1.54	3.31
PERU 4.125 08/25/27	USD	110.672	2.22	2.12	5.24
PERU 8.75 11/21/33	USD	156.067	3.17	3.10	8.37
PERU 6.55 03/14/37	USD	137.167	3.45	3.40	10.20
PERU 5.625 11/18/2050	USD	138.558	3.52	3.48	16.34
CHILE 2.25 10/30/22	USD	101.825	0.66	0.21	0.99
CHILE 3.125 01/18/26	USD	106.419	1.61	1.49	3.98
CHILE 3.625 10/30/42	USD	104.34	3.36	3.31	14.82
COLOM 11.85 03/09/28	USD	154.057	2.74	2.43	4.93
COLOM 10.375 01/28/33	USD	146.867	4.96	4.85	7.46
COLOM 7.375 09/18/37	USD	123.929	5.19	5.11	10.07
COLOM 6.125 01/18/41	USD	111.292	5.22	5.16	11.66
MEX 4 10/02/23	USD	111.292	5.219	5.159	11.66
MEX5.55 01/45	USD	118.357	4.32	4.27	13.87



Source: Bloomberg

Equity

Largest gains	Exchange	Currency	Price	▲%
CAP	Chile	CLP	8960.00	7.95
PARQUE ARAUCO	Chile	CLP	768.50	6.46
SMU SA	Chile	CLP	78.95	5.27
BANCO CRED INVER	Chile	CLP	28490.00	5.14
VOLCAN CIA MIN-B	Peru	PEN	0.69	4.55

Per Turnover

	Exchange	Amount (US\$)
CEMEX SAB-CPO	Mexico	27,422,600
FALABELLA SA	Chile	26,987,588
WALMART DE MEXIC	Mexico	26,847,763
AMERICA MOVIL-L	Mexico	26,513,682
GRUPO F BANORT-O	Mexico	20,113,118

Largest losses	Exchange	Currency	Price	▼%
GRUPO ENERGIA BO	Colombia	COP	2788	-3.90
GRUPO TELEV-CPO	Mexico	MXN	44.5	-3.03
MEGACABLE-CPO	Mexico	MXN	62.31	-2.78
AERO DEL SURES-B	Mexico	MXN	397.48	-2.02
CERVEZAS	Chile	CLP	6868	-1.87

Per Volume

	Exchange	Volume
ITAU CORPBANCA	Chile	556,621,186
BANCO SANTANDER	Chile	74,339,396
BANCO DE CHILE	Chile	60,072,525
CEMEX SAB-CPO	Mexico	40,101,172
COLBUN SA	Chile	38,587,543

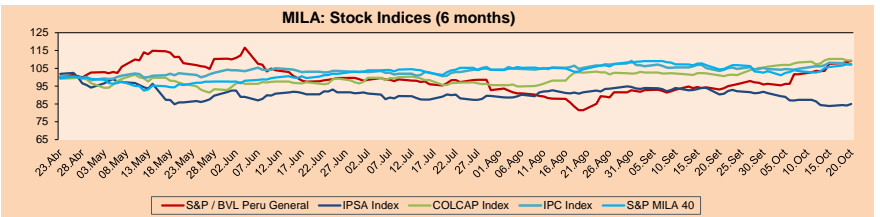
MILA

Peru: The General Index of the BVL ended today's session with a positive result of + 1.35%. The index maintains an annual accumulated positive trend of + 2.02% in local currency, while the adjusted return in dollars amounts to -7.10%. Then, the S&P / BVL Peru SEL varied by + 1.45% while the S&P / BVL LIMA 25 by + 1.73%. The PEN spot reached S / 3.9734. Headline: Castillo retakes in his speech the need for major constitutional reforms

Chile: The IPSA index ended the day with a positive return of + 2.24%. The sectors that benefited the most from the session were Real Estate (+ 4.83%) and Information Technology (+ 4.44%). The shares with the best performance Inversiones CAP SA (+ 7.95%) and Parque Arauco SA (+ 6.46%). Headline: Wall Street braces for a week marked by big tech results and IPSA marks its biggest rise since June

Colombia: The COLCAP index closed today with a positive return of + 0.17%. The most affected sectors of the day were Non-Basic Consumer Products (+ 2.25%) and Finance (+ 0.72%). The stocks with the best performance were Organización Terpel SA (+ 2.25%) and Bancolombia SA (+ 2.21%). Headline: Corficolombiana raises the country's GDP projection for 2021 to 9.3%

Mexico: The IPC index closed the day with a negative return of -0.11%. The most affected sectors of the day were Industrial (-1.12%) and Non-Basic Consumer Products (-1.12%). The worst performing stocks were Grupo Televisa SAB-SER CPO (-3.03%) and Grupo Controladora (-2.82%) Headline: Light and shadows: Wall Street has all-time highs and the BMV has dropped a sixth

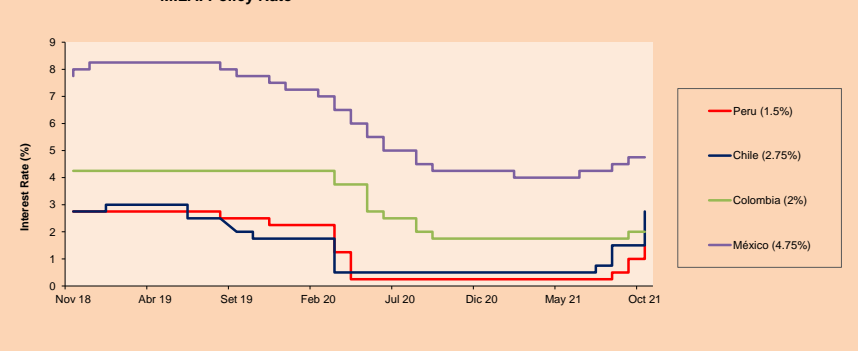


Base: 23/04/21=100
Source: Bloomberg

ETFs

	Curr.	Close	1D	5D	30 D	YTD	Exchange
▲ iShares MSCI All Peru Caped Index Fund	USD	30.91	1.41%	1.88%	15.72%	-10.87%	NYSE Arca
▲ iShares MSCI All Chile Caped Index Fund	USD	25.14	3.71%	4.53%	-6.82%	-16.78%	Cboe BZX
▼ Global X MSCI Colombia	USD	10.925	-0.23%	-0.91%	8.71%	-3.83%	NYSE Arca
▲ iShares MSCI Mexico Capped	USD	49.57	0.08%	-0.50%	0.61%	15.31%	NYSE Arca
▲ iShares MSCI Emerging Markets	USD	52.31	0.52%	0.97%	3.01%	1.24%	NYSE Arca
▲ Vanguard FTSE Emerging Markets	USD	51.97	0.37%	0.46%	3.14%	3.71%	NYSE Arca
▲ iShares Core MSCI Emerging Markets	USD	64.02	0.57%	0.69%	2.78%	3.19%	NYSE Arca
▲ iShares JP Morgan Emerging Markets Bonds	USD	63.94	0.11%	0.50%	1.33%	4.68%	Cboe BZX
▼ Morgan Stanley Emerging Markets Domestic	USD	5.89	-0.17%	-0.84%	-1.83%	-6.36%	New York

MILA: Policy Rate



Source: Bloomberg

Capital Market Laboratory Coordinator: Economist Bruno Bellido
Collaboration: Miguel Solimano, Alonso García, Ariam Loayza y Jairo Valverde
email: pulso@bursatil@ulima.edu.pe
facebook: www.facebook.com/pulso@bursatil.ul

The content of this document is just for informational purposes. The information and opinions expressed should not be considered as recommendations for future decisions. Under any circumstances, the Capital Market Laboratory of University of Lima will be responsible for the use of the statements in this document.

WORLD

Main Indices	Close	1 D*	5 D*	1 M*	YTD*	Market Cap. (US\$ Mill.)
▲ Dow Jones (USA)	35,741.15	0.18%	1.37%	2.71%	16.78%	11,103,179
▲ Standard & Poor's 500 (EEUU)	4,566.48	0.47%	1.78%	2.49%	21.58%	40,230,120
▲ NASDAQ Composite (USA)	15,226.71	0.90%	1.36%	1.19%	18.14%	25,567,971
▲ Stoxx EUROPE 600 (Europe)	472.21	0.07%	1.11%	1.93%	18.34%	11,297,209
▲ DAX (Germany)	15,599.23	0.36%	0.81%	0.43%	13.71%	1,445,710
▲ FTSE 100 (United Kingdom)	7,222.82	0.25%	0.26%	2.43%	11.80%	1,479,239
▼ CAC 40 (France)	6,712.87	-0.31%	0.69%	1.12%	20.92%	1,906,413
▲ IBEX 35 (Spain)	8,920.90	0.16%	-0.17%	0.54%	10.49%	512,846
▼ MSCI AC Asia Pacific Index	200.11	-0.03%	0.91%	-0.33%	0.13%	26,291,903
▲ HANG SENG (Hong kong)	26,132.03	0.02%	2.84%	8.02%	-4.04%	4,056,983
▲ SHANGHAI SE Comp. (China)	3,609.86	0.76%	1.17%	-0.09%	3.94%	7,334,636
▼ NIKKEI 225 (Japan)	28,600.41	-0.71%	-1.46%	-5.45%	4.21%	4,146,890
▲ S&P/ASX 200 (Australia)	7,441.00	0.34%	0.81%	1.34%	12.96%	1,785,029
▼ KOSPI (South Korea)	3,020.54	-0.11%	-1.62%	-3.35%	5.12%	1,812,528

*Legend: Variation 1D: 1 Day; 5D: 5 Days; 1M: 1 Month; YTD: Var.% 12/31/20 to date

Equity

Germany (Stocks from DAX Index)

Largest gains	Curr.	Price	▲%	Exchange	Largest losses	Curr.	Price	▼%	Exchange
BMW GY	EUR	87.54	2.16	Xetra	DBR GY	EUR	112.35	-1.79	Xetra
1COV GY	EUR	56.04	1.19	Xetra	AIR GY	EUR	108.02	-1.57	Xetra
IFX GY	EUR	39.025	1.07	Xetra	DWNI GY	EUR	51.9	-1.22	Xetra
FME GY	EUR	61.9	1.04	Xetra	CON GY	EUR	97.55	-1.07	Xetra

Europe (Stocks from STOXX EUROPE 600)

Largest gains	Curr.	Price	▲%	Exchange	Largest losses	Curr.	Price	▼%	Exchange
RXL FP	EUR	17.345	5.44	EN Paris	DOM SS	SEK	125.8	-5.70	Stockholm
BC8 GY	EUR	64.94	5.35	Xetra	ROSE SE	CHF	340	-5.42	SIX Swiss Ex
ICA SS	SEK	435.9	5.24	Stockholm	LIFCOB SS	SEK	237.2	-4.20	Stockholm
PAH9 GY	EUR	92.58	4.73	Xetra	ADP FP	EUR	109.65	-3.90	EN Paris

Global Overview:

United States:

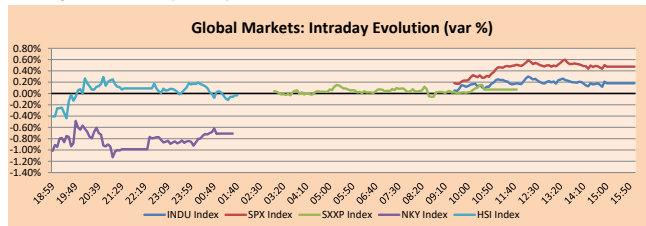
The US market closes with positive returns, thanks to the success in the earnings season being one of the best weeks of the quarter. Likewise, Tesla Inc was the biggest winner today, with a rise of 12.66% surpassing the market capitalization of 1 trillion dollars after the car rental company Hertz placed an order for 100,000 Tesla cars. In this way, the S & P500 and the Dow reached highs. Likewise, the Nasdaq ended higher thanks to the strong technological push from Tesla and PayPal. On the other hand, the president of the United States, Joe Biden, remained hopeful in relation to his spending plans, also the White House said that the Democrats were getting closer to an agreement. On the other hand, investors are analyzing the quarterly results and their adaptation to bottlenecks caused by labor shortages, the supply chain and inflationary pressures. So far, of the 119 S & P500 companies that have submitted earnings reports, 83.2% have exceeded analyst expectations. Thus, DOW JONES + 0.18%; S&P 500 + 0.47%; NASDAQ + 0.90% ended the day with positive results.

Europe

The major European indices ended the session with mostly positive returns, driven by momentum in the mining and energy sectors on the back of higher energy-related commodity prices. Investors are also waiting for quarterly earnings reports to be released this week. The pan-European STOXX 600 index closed slightly higher with +0.07% as rising commodity prices were overshadowed by losses in the industrial sector as a result of rising bond yields and a deteriorating outlook for the telecommunications sector. The U.K. market ended with positive returns, reaching a twenty-month high, due to strong quarterly earnings reports, diminishing the negative effect of concerns about rising inflation and slow economic growth. It was also boosted by the banking company HSBC Holdings, which returned +1.90%. Similarly, the German DAX index closed higher, driven by the Information Technology sector +1.76% and Consumer Staples +1.14%. However, France's CAC40 had negative performances caused by losses in the aerospace sector following an unexpected wave of contagions in China that caused investors to be wary of the travel industry. Thus, FTSE 100 +0.25%; CAC 40 -0.31%; DAX +0.36%; STOXX 600 +0.07% ended mostly positive.

Asia:

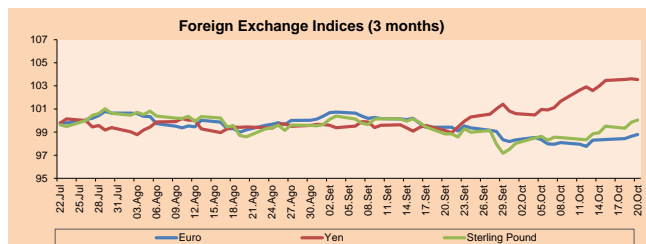
Major Asian indices closed mostly higher as traders reacted to mixed earnings news from several large U.S. companies. The Chinese market ended in positive territory, led by environmental protection stocks ahead of China's moves to achieve carbon neutrality. The country seeks to peak carbon emissions by 2030 and achieve carbon neutrality 30 years later. The KOSPI snapped its three-day losing streak amid expectations of strong quarterly results, as POSCO, The steelmaker rose +13.1% after reporting the highest quarterly operating profit in its history. Meanwhile, the Hang Seng index ended with an imperceptible gain in a session in which financials and real estate pulled at opposite ends, with AIA gaining +0.43% and Country Garden losing -3.06%. Japan's NIKKEI closed in losses on the defeat of Japan's ruling coalition in Sunday's by-election, discouraging buying ahead of the general election. The Australian market ended higher after Telstra partnered with the Australian government to acquire Digicel Pacific, where the latter is subject to Digicel's business performance over the next three years. Thus, NIKKEI -0.71%; HANG SENG +0.02%; CSI 300 +0.40%; S&P/ASX 200 +0.34%; KOSPI +0.48%; SHANGAI COMPOSITE +0.76% ended with positive returns.



Source: Bloomberg

Currency	Price	1 D*	5 D*	1 M*	YTD*
▼ Euro	1.1608	-0.30%	-0.02%	-0.96%	-4.98%
▲ Yen	113.7100	0.19%	-0.53%	2.69%	10.13%
▲ Sterling Pound	1.3767	0.09%	0.30%	0.64%	0.71%
▲ Yuan	6.3858	0.01%	-0.68%	-1.24%	-2.17%
▲ Hong Kong Dollar	7.7743	0.02%	-0.04%	-0.14%	0.27%
▼ Brazilian Real	5.5560	-1.66%	0.79%	4.15%	6.88%
▼ Argentine Peso	99.4867	0.09%	0.22%	0.94%	18.23%

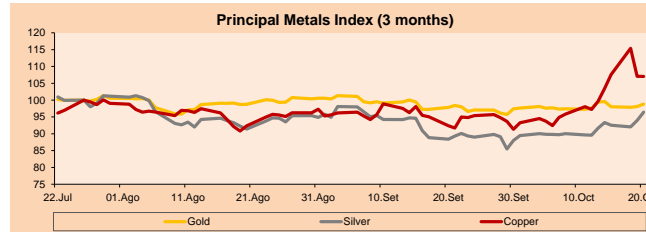
*Legend: Variation 1D: 1 Day; 5D: 5 Days; 1M: 1 Month; YTD: Var.% 12/31/20 to date



Base: 26/07/21=100
Source: Bloomberg

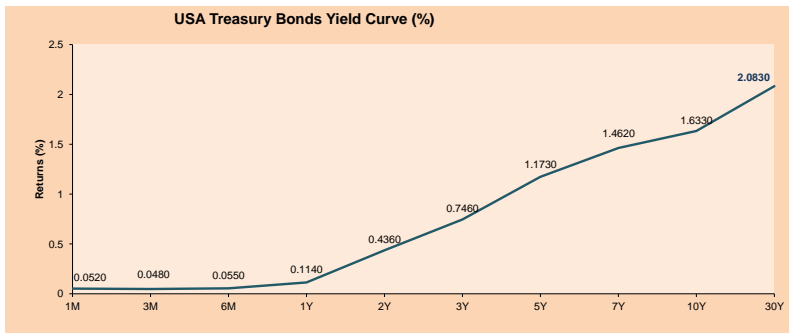
Commodities	Close	1 D*	5 D*	1 M*	YTD*
▲ Oro (US\$ Oz. T) (LME)	1,807.73	0.84%	2.43%	3.27%	-4.77%
▲ Plata (US\$ Oz. T) (LME)	24.57	1.01%	5.93%	9.59%	-6.94%
- Cobre (US\$ TM) (LME)	9,857.00	0.00%	-12.77%	5.49%	27.20%
- Zinc (US\$ TM) (LME)	3,498.50	0.00%	-6.17%	12.06%	28.18%
- Petróleo WTI (US\$ Barril) (NYM)	83.76	0.00%	2.53%	13.79%	75.67%
- Estanto (US\$ TM) (LME)	38,840.00	0.00%	-0.76%	2.05%	89.05%
- Plomo (US\$ TM) (LME)	2,461.75	0.00%	1.06%	13.48%	24.60%
▲ Azúcar #11 (US\$ Libra) (NYB-ICE)	19.39	1.62%	0.21%	-2.71%	58.88%
▲ Cacao (US\$ TM) (NYB-ICE)	2,616.00	1.28%	0.23%	0.96%	4.56%
▲ Café Arábica (US\$ TM) (NYB-ICE)	202.55	1.35%	0.47%	4.22%	50.26%

*Leyenda: Variación 1D: 1 Día; 5D: 5 Días; 1M: 1 Mes; YTD: Var.% 31/12/20 a la fecha



Base: 26/07/21=100
Source: Bloomberg

ETFs	Curr.	Close	1D	5D	30 D	YTD	Exchange
SPDR S&P 500 ETF TRUST	USD	455.55	0.54%	1.87%	2.62%	21.84%	NYSE Arca
ISHARES MSCI EMERGING MARKET	USD	52.31	0.52%	0.97%	3.01%	1.24%	NYSE Arca
ISHARES IBOXX HIGH YLD CORP	USD	86.99	0.17%	-0.22%	-1.05%	-0.36%	NYSE Arca
FINANCIAL SELECT SECTOR SPDR	USD	40.57	-0.12%	2.66%	6.15%	37.62%	NYSE Arca
VANECK GOLD MINERS ETF	USD	33.45	1.39%	3.82%	12.70%	-7.13%	NYSE Arca
ISHARES RUSSELL 2000 ETF	USD	229.57	0.95%	2.02%	2.92%	17.09%	NYSE Arca
SPDR GOLD SHARES	USD	168.93	0.69%	2.43%	3.45%	-5.29%	NYSE Arca
ISHARES 20+ YEAR TREASURY BO	USD	143.91	-0.15%	-1.24%	-2.04%	-8.76%	NASDAQ GM
INVESCO QQQ TRUST SERIES 1	USD	377.93	1.02%	1.42%	1.23%	20.46%	NASDAQ GM
ISHARES BIOTECHNOLOGY ETF	USD	160.24	1.14%	2.90%	-6.01%	5.78%	NASDAQ GM
ENERGY SELECT SECTOR SPDR	USD	58.80	1.47%	2.49%	15.52%	55.15%	NYSE Arca
PROSHARES ULTRA VIX ST FUTUR	USD	16.06	-4.29%	-8.85%	-21.82%	-84.92%	Cboe BZX
UNITED STATES OIL FUND LP	USD	57.83	-0.34%	1.53%	11.69%	75.19%	NYSE Arca
ISHARES MSCI BRAZIL ETF	USD	31.20	3.72%	-5.05%	-6.67%	-15.83%	NYSE Arca
SPDR S&P OIL & GAS EXP & PR	USD	110.69	2.89%	4.66%	20.25%	89.21%	NYSE Arca
UTILITIES SELECT SECTOR SPDR	USD	66.96	-0.43%	2.94%	2.79%	6.79%	NYSE Arca
ISHARES US REAL ESTATE ETF	USD	110.37	0.32%	2.75%	4.73%	28.86%	NYSE Arca
SPDR S&P BIOTECH ETF	USD	124.39	0.17%	1.57%	-4.59%	-11.64%	NYSE Arca
ISHARES IBOXX INVESTMENT GRA	USD	132.37	0.05%	-0.56%	-1.89%	-4.17%	NYSE Arca
ISHARES JP MORGAN US EMERGI	USD	109.59	0.07%	0.02%	-1.22%	-5.45%	NASDAQ GM
REAL ESTATE SELECT SECTOR SPDR	USD	47.83	0.29%	3.35%	4.18%	30.83%	NYSE Arca
ISHARES CHINA LARGE-CAP ETF	USD	42.33	0.31%	3.40%	10.70%	-8.83%	NYSE Arca
CONSUMER STAPLES SPDR	USD	71.24	-0.07%	1.21%	0.88%	5.62%	NYSE Arca
VANECK JUNIOR GOLD MINERS	USD	45.47	2.32%	5.57%	16.80%	-16.17%	NYSE Arca
SPDR BBG BARC HIGH YIELD BND	USD	108.65	0.16%	-0.18%	-1.08%	-0.27%	NYSE Arca
VANGUARD REAL ESTATE ETF	USD	109.39	0.32%	2.57%	4.35%	28.80%	NYSE Arca
GRAYSCALE BITCOIN TRUST BTC	USD	50.89	4.39%	11.48%	48.67%	59.03%	OTC US



Source: Bloomberg

Capital Market Laboratory Coordinator: Economist Bruno Bellido
Collaboration: Miguel Solimano, Alonso García, Ariam Loayza y Jairo Valverde
email: pulsohorsatil@ulima.edu.pe
facebook: www.facebook.com/pulsohorsatil.u

LIMA

Stocks

Ticker	Currency	Price	1D*	5D*	30D*	YTD*	Frequency	Volume (US\$)	Beta	Dividend Yield (%)	Price Earning	Market Cap. (M US\$)	Economic Sector*	Index Weight
▲ ALICORC1 PE**	S/.	6.38	0.64%	-0.14%	1.66%	-7.92%	100.00%	316,112	1.01	13.09	13.13	1,368.33	Industrial	3.53%
▲ ATACOCB1 PE**	S/.	0.15	0.00%	7.41%	19.83%	5.07%	52.63%	340	1.11	0.00	-	34.48	Mining	1.02%
▼ BACKUSH1 PE**	S/.	19.89	-0.05%	7.51%	10.50%	-1.29%	89.47%	2,493	0.73	4.70	9.54	6,392.74	Industrial	0.82%
▼ BAP PE**	US\$	130.70	-0.14%	-1.80%	19.19%	-18.62%	100.00%	179,044	1.22	0.93	-	12,335.77	Diverse	5.82%
▲ BVN PE**	US\$	8.94	3.95%	9.69%	23.65%	-25.50%	100.00%	274,150	1.15	0.00	-	2,459.94	Mining	5.88%
▲ CASAGRC1 PE**	S/.	5.95	3.30%	7.21%	11.21%	25.26%	94.74%	4,834	1.33	16.56	5.42	126.14	Agricultural	1.31%
▼ BBVAC1 PE**	S/.	2.00	-1.96%	0.00%	15.61%	-4.58%	94.74%	286,573	1.10	2.27	20.38	3,401.86	Finance	2.85%
▲ CORAREH1 PE**	S/.	1.47	11.36%	23.53%	34.86%	65.17%	100.00%	328,084	1.11	18.75	2.91	439.64	Industrial	1.72%
- CPACASC1 PE**	S/.	5.05	0.00%	6.99%	10.75%	-4.72%	94.74%	121,567	0.70	15.64	36.07	588.39	Industrial	2.38%
▲ CVERDEC1 PE**	US\$	21.50	2.38%	2.63%	20.72%	2.77%	100.00%	503,871	1.36	2.66	9.61	7,526.20	Mining	5.25%
▲ ENGEPEC1 PE**	S/.	2.15	0.94%	7.50%	14.36%	-9.28%	63.16%	5,411	0.69	15.47	9.47	1,296.24	Public Services	1.44%
- ENDISPC1**	S/.	4.25	0.00%	0.71%	1.19%	-21.30%	31.58%	19,625	0.80	4.02	9.35	683.02	Public Services	0.98%
▲ FERREYC1 PE**	S/.	1.97	2.07%	5.35%	17.26%	13.22%	100.00%	285,685	1.09	9.99	6.13	483.74	Diverse	4.90%
▲ AENZAC1 PE**	S/.	1.63	1.87%	6.54%	12.41%	-6.32%	84.21%	946,867	0.98	0.00	-	357.69	Diverse	4.05%
▼ IFS PE**	US\$	27.59	-0.79%	5.71%	24.90%	-10.83%	100.00%	78,312	1.26	2.79	7.57	3,185.20	Diverse	7.22%
▲ INRETC1 PE**	US\$	37.79	1.86%	4.97%	15.04%	-3.60%	100.00%	11,820	0.88	1.80	61.62	3,885.09	Diverse	5.28%
▲ LUSURC1 PE**	S/.	14.00	0.72%	8.70%	19.35%	-45.10%	57.89%	22,477	#N/A N/F	7.42	15.17	1,715.74	Public Services	1.81%
▲ MINSURH1 PE**	S/.	3.18	0.63%	-0.62%	18.22%	71.89%	89.47%	108,055	0.99	10.51	3.98	2,307.33	Mining	3.09%
- PML PE**	US\$	0.15	0.00%	-5.19%	43.14%	37.74%	78.95%	3,468	1.24	0.00	-	38.60	Mining	2.12%
- RELAPAC1 PE**	S/.	0.15	0.00%	0.00%	-15.52%	113.04%	78.95%	14,349	0.76	0.00	2.72	307.78	Industrial	2.12%
▲ SCCO PE**	US\$	65.70	2.64%	0.92%	13.41%	-0.30%	84.21%	39,270	0.78	4.11	17.35	50,791.44	Mining	2.14%
▲ SIDERC1 PE**	S/.	1.49	2.76%	20.16%	23.14%	38.22%	94.74%	141,542	0.89	23.76	3.89	262.50	Industrial	1.43%
- TV PE**	US\$	0.20	0.00%	-6.60%	35.62%	34.69%	89.47%	496	1.25	0.00	-	195.84	Mining	2.93%
▲ UNACEMC1 PE**	S/.	1.71	2.40%	6.87%	17.12%	10.32%	100.00%	68,993	1.14	2.69	13.50	782.45	Industrial	3.00%
▲ VOLCABC1 PE**	S/.	0.69	4.55%	0.00%	13.11%	32.69%	100.00%	251,148	1.68	0.00	-	1,752.08	Mining	5.90%
- NEXAPEC1 PE**	S/.	3.65	0.00%	3.69%	25.86%	28.98%	63.16%	9,620	1.16	0.00	10.25	1,163.74	Mining	1.56%

Quantity of shares: 26
Source: Bloomberg, Económica
* Bloomberg Industry Classification System
** PER is used in the stock market and original currency of the instrument
*Legend: Variation 1D: 1 Day; 5D: 5 Days; 1M: 1 Month; YTD: Var.% 12/31/20 to date

Up 15
Down 4
Hold 7

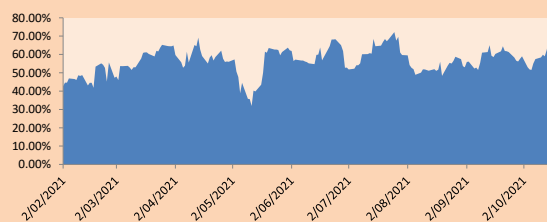
Sectorial Indices

	Close	1D*	5D*	30D*	YTD*	Beta
▲ S&P/BVLMining	422.19	2.95%	3.22%	13.22%	8.27%	0.78
▲ S&P/BVLConsumer	1,161.40	1.21%	4.31%	15.01%	6.69%	0.85
▲ S&P/BVLIndustrials	228.42	1.87%	6.86%	17.01%	19.87%	0.87
▼ S&P/BVLFinancials	948.07	-0.09%	-0.36%	15.71%	-8.30%	1.18
▲ S&P/BVLConstruction	243.24	1.80%	7.50%	15.07%	16.32%	0.77
▲ S&P/BVLPublicSvcs	568.08	0.28%	3.44%	11.28%	-7.49%	0.36
▲ S&P/BVLElectricUtil	554.59	0.28%	3.44%	11.28%	-7.49%	0.36

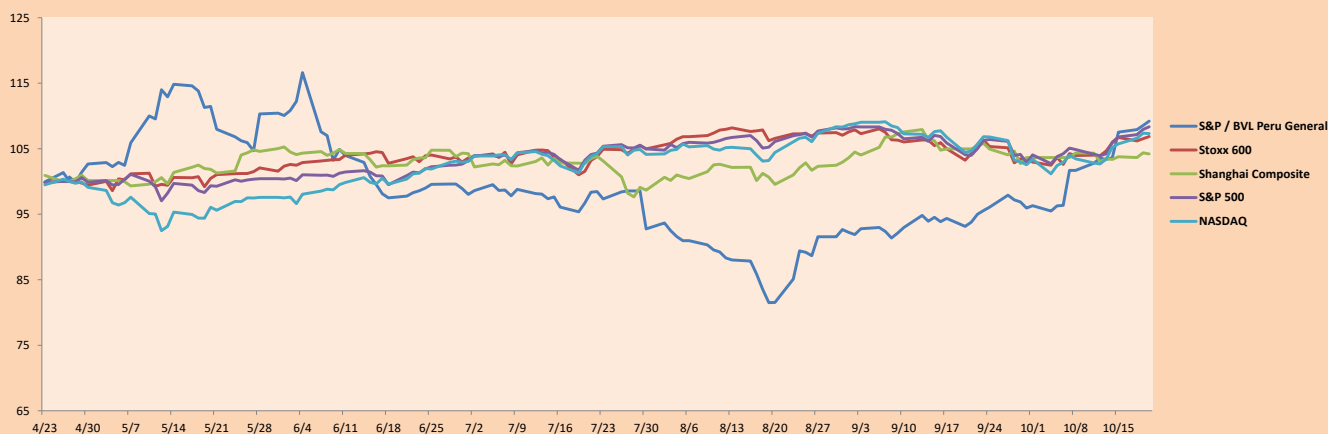
S&P/BVLConstructionTRPEN

*Legend: Variation 1D: 1 Day; 5D: 5 Days; 1M: 1 Month; YTD: Var.% 12/31/20 to date

Correlation Graph of Returns of Mining Index against Metallic Index of London (3 months)



Indices (6 months)



Base: 27/04/21=100
Source: Bloomberg

Capital Market Laboratory Coordinator: Economist Bruno Bellido
Collaboration: Miguel Solimano, Alonso García, Ariam Loayza y Jairo Valverde
email: pulsobursatil@ulima.edu.pe
facebook: www.facebook.com/pulsobursatil.ul

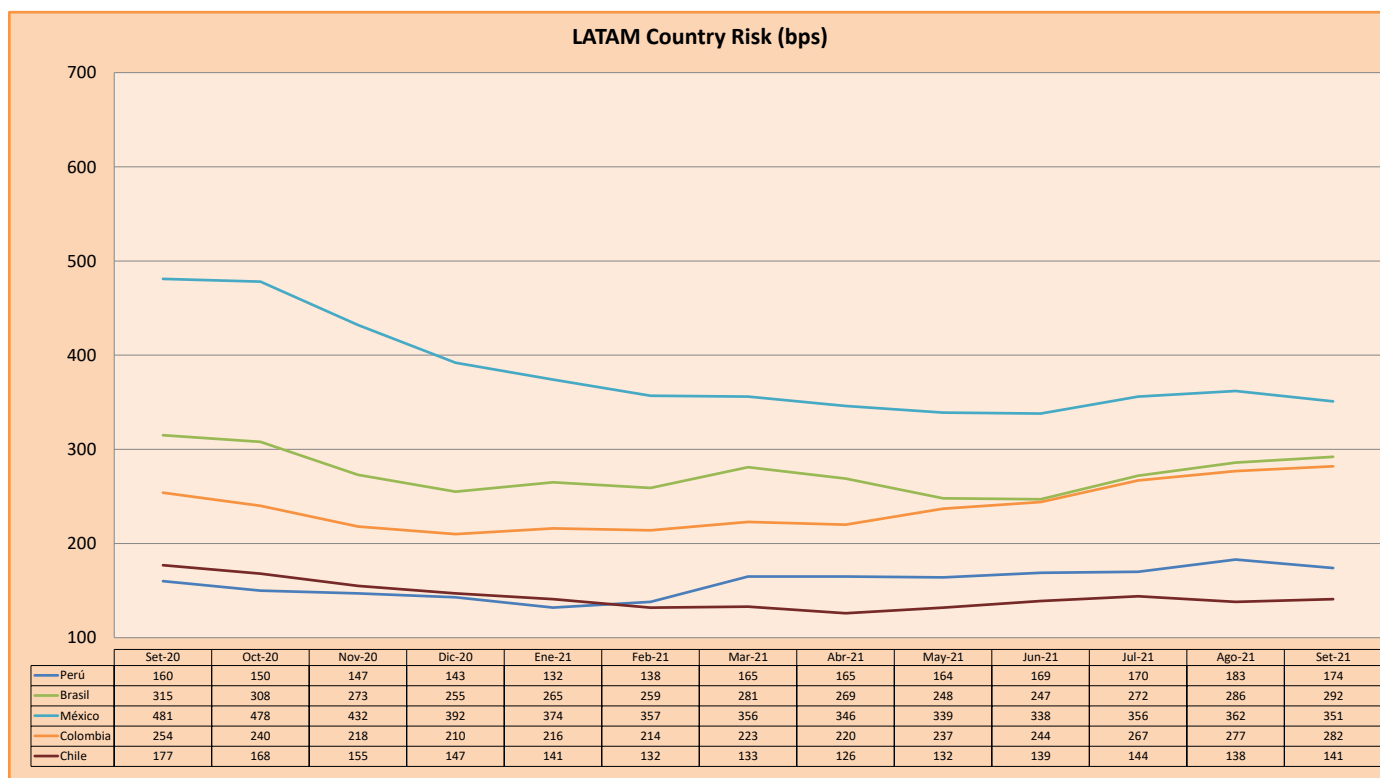
SOVEREIGN RATING

RISK RATINGS			
Moody's	S&P	Fitch	
Aaa	AAA	AAA	Prime
Aa1	AA+	AA+	High credit quality
Aa2	AA	AA	
Aa3	AA-	AA-	
A1	A+	A+	Medium-high grade, with low credit risk
A2	A	A	
A3	A-	A-	
Baa1	BBB+	BBB+	Moderate Credit Risk
Baa2	BBB	BBB	
Baa3	BBB-	BBB-	
Ba1	BB+	BB+	It has speculative elements and it is subject to substantial credit risk
Ba2	BB	BB	
Ba3	BB-	BB-	
B1	B+	B+	It is considered speculative and it has high credit risk
B2	B	B	
B3	B-	B-	
Caa1	CCC+	CCC	Bad credit conditions and it is subject to high credit risk
Caa2	CCC		
Caa3	CCC-		
Ca	CC	DDD	Very close to default or in default
C	C		
	D		

Source: Bloomberg

Latin America Credit Rating			
Clasificadora de riesgo			
Country	Moody's	Fitch	S&P
Peru	Baa1	BBB	BBB+
México	Ba2	BB-	BB-
Venezuela	C	WD	NR
Brazil	Ba2	BB-	BB-
Colombia	Baa2	BB+	BB+
Chile	A1	A-	A
Argentina	Ca	WD	CCC+
Panama	Baa2	BBB-	BBB

Source: Bloomberg



Source: BCRP

Capital Market Laboratory Coordinator: Economist Bruno Bellido
Collaboration: Miguel Solimano, Alonso García, Ariam Loayza y Jairo Valverde
email: pulsobursatil@ulima.edu.pe
facebook: www.facebook.com/pulsobursatil.ul