

PULSO BURSÁTIL

FACULTAD DE CIENCIAS EMPRESARIALES Y ECONÓMICAS
CARRERA DE ECONOMÍA
LABORATORIO DE MERCADO DE CAPITALES

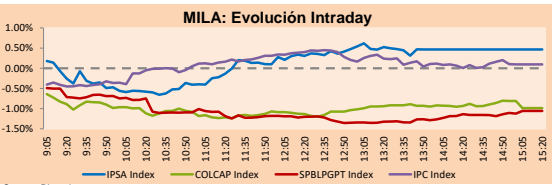


MILA

Lima, October 29, 2021

Main Indexes	Close	1 D	5 D	1 M	YTD	Cap. Burs. (US\$ bill)
▼ IPISA (Chile)	4,092.20	-0.10%	0.19%	-5.42%	-2.04%	93.58
▲ IGPA (Chile)	20,561.17	0.01%	0.65%	-4.63%	-2.12%	113.09
▼ COLSC (Colombia)	980.31	-0.28%	1.18%	1.70%	-7.43%	4.65
▼ COLCAP (Colombia)	1,394.04	-0.99%	-0.40%	1.74%	-3.05%	82.58
▼ S&P/BVL (Perú)*	20,737.77	-1.06%	-1.06%	13.02%	-0.41%	92.20
▼ S&P/BVL SEL (Perú)	551.88	-0.41%	-0.42%	14.36%	0.09%	83.41
▼ S&P/BVL LIMA 25	28,795.53	-0.26%	0.35%	16.28%	14.27%	90.98
▲ IPC (México)	51,309.84	0.12%	-1.12%	0.49%	16.44%	312.46
▲ S&P MILA 40	458.57	-1.21%	-0.92%	-0.57%	-14.23%	6,425.21

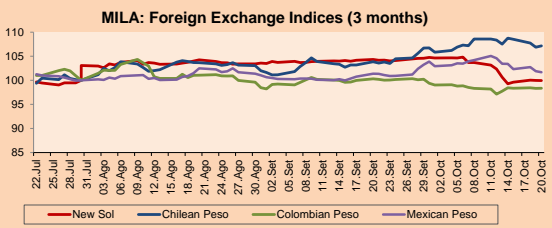
*Legend: Variation 1D: 1 day; 5D: 5 days; 1M: 1 Month; YTD: Var% 12/31/20 to date



Source: Bloomberg

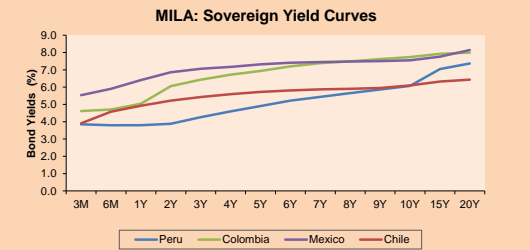
Currency	Price	1D*	5D*	30 D*	YTD*
▲ Sol (PEN)	3,992.9	0.27%	0.67%	-3.29%	10.36%
▲ Chilean Peso (CLP)	814.50	1.05%	-0.18%	0.57%	14.43%
▼ Colombian Peso (COP)	3,767.37	-0.27%	-0.18%	-1.89%	9.84%
▲ Mexican Peso (MXN)	20.56	0.94%	1.90%	0.24%	3.26%

*Legend: Variation 1D: 1 day; 5D: 5 days; 1M: 1 Month; YTD: Var% 12/31/20 to date



Base: 30/07/21=100
Source: Bloomberg

Fixed Income	Currency	Price	Bid Yield (%)	Ask Yield (%)	Duration
PERU 7.35 07/21/25	USD	120.151	1.80	1.66	3.29
PERU 4.125 08/25/27	USD	109.813	2.37	2.26	5.22
PERU 8.75 11/21/33	USD	155.226	3.23	3.16	8.34
PERU 6.55 03/14/37	USD	136.259	3.52	3.45	10.17
PERU 5.625 11/18/2050	USD	137.481	3.56	3.53	16.28
CHILE 2.25 10/30/22	USD	101.817	0.64	0.20	0.99
CHILE 3.125 01/21/26	USD	106.166	1.65	1.56	3.96
CHILE 3.625 10/30/42	USD	105.815	3.27	3.22	15.13
COLOM 11.85 03/09/28	USD	153.841	2.73	2.47	4.92
COLOM 10.375 01/28/33	USD	146.934	4.96	4.83	7.43
COLOM 7.375 09/18/37	USD	123.799	5.20	5.12	10.06
COLOM 6.125 01/18/41	USD	111.175	5.23	5.17	11.64
MEX 4 10/02/23	USD	111.175	5.227	5.168	11.64
MEX5.55 01/45	USD	119.941	4.22	4.17	13.91



Source: Bloomberg

Equity

Largest gains	Exchange	Currency	Price	▲%
GRUPO BIMBO-A	Mexico	MXN	60.94	8.28
AGUAS ANDINAS-A	Chile	CLP	155.00	5.65
PARQUE ARAUCO	Chile	CLP	803.00	4.30
BECE SAB DE CV	Mexico	MXN	47.06	3.72
VOLCAN CIA MIN-B	Peru	PEN	0.71	2.90

Per Turnover

	Exchange	Amount (US\$)
WALMART DE MEXIC	Mexico	67,639,824
AMERICA MOVIL-L	Mexico	42,167,410
GRUPO F BANORT-O	Mexico	34,045,644
SOQUIMICH-B	Chile	19,396,894
GRUPO MEXICO-B	Mexico	19,322,439

Largest losses	Exchange	Currency	Price	▼%
INDUSTRIAS PENOL	Mexico	MXN	263.99	-5.70
BUENAVENTURA-ADF	Peru	USD	7.8	-5.68
ENEL CHILE SA	Chile	CLP	33.33	-3.87
CMPC	Chile	CLP	1501	-3.29
COLBUN SA	Chile	CLP	56.1	-3.28

Per Volume

	Exchange	Volume
ITAU CORPBANCA	Chile	641,105,019
BANCO SANTANDER	Chile	141,796,274
BANCO DE CHILE	Chile	97,362,885
ENEL AMERICAS SA	Chile	73,754,321
ENEL CHILE SA	Chile	72,482,728

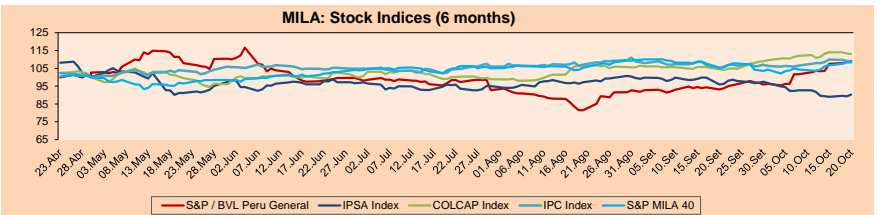
MILA

Peru: The General Index of the BVL ended today's session with a negative result of -1.06%. The index maintains an annual accumulated negative trend of -0.41% in local currency, while the adjusted return in dollars amounts to -9.76%. Then, the S&P / BVL Peru SEL varied by -0.41% while the S&P / BVL LIMA 25 by -0.26%. The PEN spot reached S/. 3.9929. Headline: Dollar closes the week higher at S / 3.9920 despite the intervention of the BCR

Chile: The IPISA index ended the day with a negative return of -0.10%. The least benefited sectors of the day were Non-Basic Consumer Products (-2.10%) and Public Services (-2.08%). The worst performing stocks were Enel Chile SA (-3.87%) and Empresas CMPC SA (-3.29%). Headline: Wall Street rises despite poor results from Apple and Amazon as Chile watches fourth withdrawal

Colombia: The COLCAP index closed today with a positive return of -0.99%. The most affected sector of the day was Energy -1.33%. The worst performing stocks were Ecopetrol SA (-1.49%) and Grupo Argos SA (-1.15%). Headline: Banco de la República takes its interest rate to 2.5%

Mexico: The IPC index closed the day with a positive return of + 0.12%. The most benefited sectors of the day were Industrial (+ 1.49%) and Communication Services (+ 0.28%). The shares with the best performance were Grupo Bimbo (+ 8.28%) and Bece SAB de CV (+ 3.72%) Headline: Budgetary income exceeds that forecast by the Treasury by 146.5 thousand million pesos for 3Q21

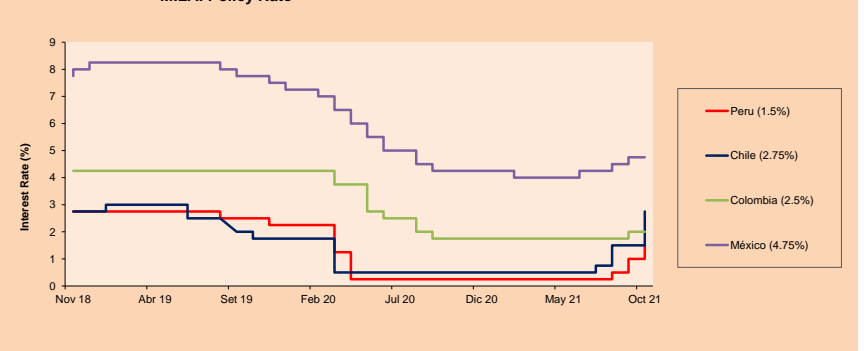


Base: 23/04/21=100
Source: Bloomberg

ETFs

	Curr.	Close	1D	5D	30 D	YTD	Exchange
▼ iShares MSCI All Peru Caped Index Fund	USD	30.02	-0.63%	-1.51%	13.28%	-13.44%	NYSE Arca
▼ iShares MSCI All Chile Caped Index Fund	USD	24.53	-1.13%	1.20%	-5.83%	-18.80%	Cboe BZX
▼ Global X MSCI Colombia	USD	10.925	-0.32%	-0.23%	6.98%	-3.83%	NYSE Arca
▼ iShares MSCI Mexico Capped	USD	48.35	-0.90%	-2.38%	0.37%	12.47%	NYSE Arca
▼ iShares MSCI Emerging Markets	USD	50.92	-1.45%	-2.15%	1.88%	-1.45%	NYSE Arca
▼ Vanguard FTSE Emerging Markets	USD	50.66	-1.25%	-2.16%	1.99%	1.10%	NYSE Arca
▼ iShares Core MSCI Emerging Markets	USD	62.43	-1.28%	-1.93%	1.89%	0.63%	NYSE Arca
▼ iShares JP Morgan Emerging Markets Bonds	USD	62.97	-0.76%	-1.41%	0.99%	3.09%	Cboe BZX
▼ Morgan Stanley Emerging Markets Domestic	USD	5.77	-1.20%	-2.20%	-1.37%	-8.27%	New York

MILA: Policy Rate



Source: Bloomberg

Capital Market Laboratory Coordinator: Economist Bruno Bellido
Collaboration: Miguel Solimano, Alonso García, Ariam Loayza y Jairo Valverde
email: pulso@pulsobursatil@ulima.edu.pe
facebook: www.facebook.com/pulsobursatil.ul

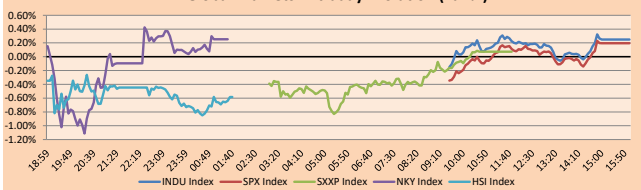
The content of this document is just for informational purposes. The information and opinions expressed should not be considered as recommendations for future decisions. Under any circumstances, the Capital Market Laboratory of University of Lima will be responsible for the use of the statements in this document.

WORLD

Main Indices	Close	1 D*	5 D*	1 M*	YTD*	Market Cap. (US\$ Mill.)
▲ Dow Jones (USA)	35,819.56	0.25%	0.40%	4.35%	17.03%	11,280,638
▲ Standard & Poor's 500 (EEUU)	4,605.38	0.19%	1.33%	5.70%	22.61%	40,725,344
▲ NASDAQ Composite (USA)	15,498.39	0.33%	2.71%	6.40%	20.25%	26,172,856
▲ Stoxx EUROPE 600 (Europe)	475.51	0.07%	0.77%	4.99%	19.17%	11,468,850
▼ DAX (Germany)	15,688.77	-0.05%	0.94%	3.51%	14.36%	1,457,462
▼ FTSE 100 (United Kingdom)	7,237.57	-0.16%	0.46%	3.00%	12.03%	1,525,782
▲ CAC 40 (France)	6,830.34	0.38%	1.44%	4.80%	23.04%	1,951,136
▲ IBEX 35 (Spain)	9,057.70	0.35%	1.70%	2.93%	12.19%	523,752
▼ MSCI AC Asia Pacific Index	197.22	-0.79%	-1.47%	1.14%	-1.35%	25,877,162
▼ HANG SENG (Hong kong)	25,377.24	-0.70%	-2.87%	3.26%	-6.81%	3,911,304
▲ SHANGHAI SE Comp. (China)	3,547.34	0.82%	-0.98%	-0.58%	2.14%	7,187,188
▲ NIKKEI 225 (Japan)	28,892.69	0.25%	0.30%	0.42%	5.28%	4,157,581
▲ S&P/ASX 200 (Australia)	7,923.74	-1.44%	-1.24%	1.92%	11.18%	1,784,035
▲ KOSPI (South Korea)	2,970.68	0.12%	-1.12%	-1.61%	3.38%	1,782,549

*Legend: Variation 1D: 1 Day; 5D: 5 Days; 1M: 1 Month; YTD: Var.% 12/31/20 to date

Global Markets: Intraday Evolution (var %)

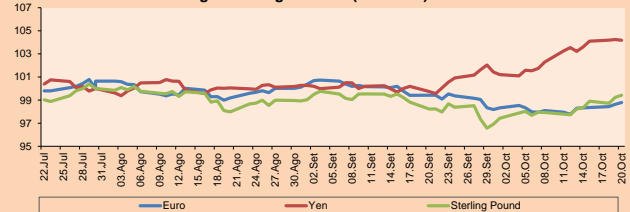


Source: Bloomberg

Currency	Price	1 D*	5 D*	1 M*	YTD*
▼ Euro	1.1558	-1.05%	-0.73%	-0.34%	-5.39%
▲ Yen	113.9500	0.33%	0.40%	1.78%	10.36%
▼ Sterling Pound	1.3682	-0.78%	-0.53%	1.90%	0.09%
▲ Yuan	6.4056	0.22%	0.32%	-1.01%	-1.86%
▲ Hong Kong Dollar	7.7790	0.02%	0.08%	-0.09%	0.33%
▼ Brazilian Real	5.6364	-0.17%	-0.24%	4.09%	8.42%
▼ Argentine Peso	97.2007	0.04%	0.32%	1.02%	18.51%

*Legend: Variation 1D: 1 Day; 5D: 5 Days; 1M: 1 Month; YTD: Var.% 12/31/20 to date

Foreign Exchange Indices (3 months)

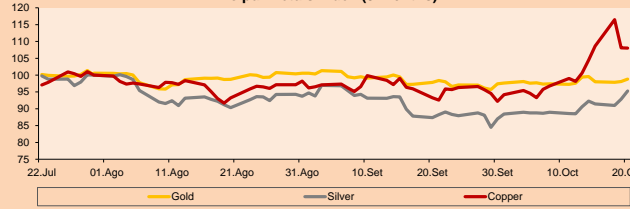


Base: 30/07/21=100
Source: Bloomberg

Commodities	Close	1 D*	5 D*	1 M*	YTD*
▼ Oro (US\$ Oz. T) (LME)	1,783.38	-0.86%	-0.52%	3.30%	-6.06%
▼ Plata (US\$ Oz. T) (LME)	23.90	-0.73%	-1.73%	10.99%	-9.47%
▼ Cobre (US\$ TM) (LME)	9,808.50	-0.48%	-0.49%	6.92%	26.58%
▲ Zinc (US\$ TM) (LME)	3,447.25	0.50%	-1.46%	13.34%	26.30%
▲ Petróleo WTI (US\$ Barril) (NYM)	83.57	0.92%	-0.23%	12.17%	75.27%
▲ Estano (US\$ TM) (LME)	39,038.00	4.50%	0.51%	6.01%	90.02%
▼ Plomo (US\$ TM) (LME)	2,419.00	-1.70%	-1.74%	12.15%	22.43%
▼ Azúcar #11 (US\$ Libra) (NYB-ICE)	19.27	-1.78%	1.00%	-2.28%	35.04%
▼ Cacao (US\$ TM) (NYB-ICE)	2,580.00	-1.19%	-1.86%	-1.38%	3.61%
▲ Café Arábica (US\$ TM) (NYB-ICE)	203.95	2.00%	2.05%	5.46%	51.30%

*Leyenda: Variación 1D: 1 Día; 5D: 5 Días; 1M: 1 Mes; YTD: Var.% 31/12/20 a la fecha

Principal Metals Index (3 months)



Base: 30/07/21=100
Source: Bloomberg

Equity

Germany (Stocks from DAX Index)

Largest gains	Curr.	Price	▲%	Exchange	Largest losses	Curr.	Price	▼%	Exchange
LIN GY	EUR	278.5	2.47	Xetra	FME GY	EUR	57.46	-3.59	Xetra
DAI GY	EUR	85.74	2.25	Xetra	DWNI GY	EUR	44.29	-3.32	Xetra
HEN3 GY	EUR	77.38	0.83	Xetra	DHER GY	EUR	107.55	-2.71	Xetra
IFX GY	EUR	40.395	0.74	Xetra	FRE GY	EUR	39.265	-2.11	Xetra

Europe (Stocks from STOXX EUROPE 600)

Largest gains	Curr.	Price	▲%	Exchange	Largest losses	Curr.	Price	▼%	Exchange
ARGX BB	EUR	258.9	7.61	EN Brussels	GN DC	DKK	390.5	-8.29	Copenhagen
BBVA SQ	EUR	6.062	7.46	Soc.Bol SIBE	GAW LN	Gbp	9645	-7.70	Londres
PEO PW	PLN	131.75	6.25	Warsaw	BAMI IM	EUR	2.686	-7.28	Borsa Italiana
NEM GY	EUR	99.2	6.14	Xetra	SWECB SS	SEK	136.7	-6.56	Stockholm

Global Overview:

United States:

The main U.S. indices closed the day with positive performances, driven by good results within the quarterly earnings reports, amid increased consumer spending. However, these gains were tempered by disappointing results from Apple and Amazon in their respective reports. On the indexes side, the DOW JONES closed higher, driven by Microsoft Corp +2.24%, Intel Corp +1.91% and Merck & Co. Inc. +1.73%. It is worth noting that Microsoft managed to overtake Apple as the company with the largest market capitalization, reaching a value of \$2.45 trillion. This as a result of Apple's supply chain difficulties. The S&P 500 also gained, driven by the Health Care +0.95%, Communication Services +0.83% and Information Technology +0.43% sectors. Also, the U.S. government plans to increase spending for electric cars, granting credits up to \$12,500 per vehicle. The NASDAQ had a positive performance, despite the fact that companies with high weighting within the index had a reduction in their share price. This is because analysts' estimates were not met. Thus, DOW JONES +0.25%; S&P 500 +0.19% and NASDAQ +0.33% ended the day with positive results.

Europe

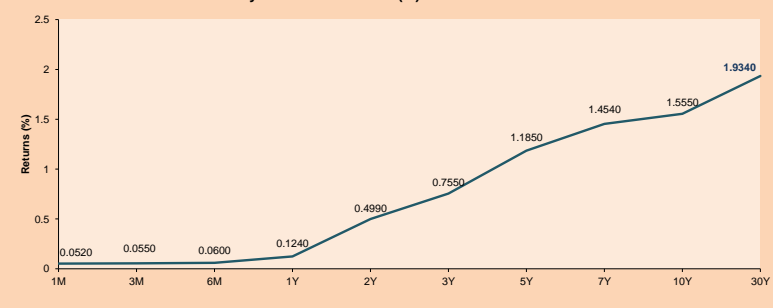
Major European indices ended the session with mixed performances as Apple suppliers slumped following weak forecasts for the holiday quarter, while jitters persist over the outlook for monetary policy. The pan-European STOXX 600 index ended with gains, posting gains of 4.6% in October, marking its best month in seven months and recovering all of September's losses as third-quarter earnings reports entice investors. The U.K. market, reflected in the FTSE 100, ended lower on concerns about possible interest rate hikes and NatWest's fall. The state-owned bank fell -4.45% despite tripling its quarterly result, as its margin contracted in a sign of tougher times ahead. Meanwhile, the DAX index closed in negative territory despite weak results from Amazon and Apple and after back-and-forth trading. Amazon reported a drop in its results and Apple's sales were below expectations due to chip shortages. The French market rose this session, reaching a new one-month high, thanks to a rise in EssilorLuxottica. The optical products group reported €5,473 million, 34% higher than a year ago, due to the addition of GrandVision to the accounts. Thus, FTSE 100 -0.16%; CAC 40 +0.38%; DAX -0.05%; STOXX 600 +0.07% ended at mixed levels.

Asia:

The main Asian indexes closed with mixed returns, due to concerns about rising inflation and problems with the supply chain. On the other hand, corporate results exceed expectations in some countries in the region. Thus, China's shares ended higher, fueled by growth in Consumer Staples and Technology stocks. On the contrary, the Hong Kong index ended lower, as the real estate sector had its worst week since February 2018. On the other hand, Japanese stocks ended higher, thanks to optimism related to the prospects of investors against national companies overcoming concerns about the country's general elections. On the other hand, the KOSPI of South Korea registered its worst weekly decline in the last 3 weeks, after weak economic data and tensions related to the supply chain. Finally, Australian stocks ended lower, following the fall in financial and energy stocks, due to rising inflation in the country. Thus, NIKKEI + 0.25%; HANG SENG -0.70%; CSI 300 + 0.92%; S & P / ASX 200 -1.44%; KOSPI -1.29% finished with mixed returns.

ETFs	Curr.	Close	1D	5D	30 D	YTD	Exchange
SPDR S&P 500 ETF TRUST	USD	459.25	0.20%	1.35%	5.71%	22.83%	NYSE Arca
ISHARES MSCI EMERGING MARKET	USD	50.92	-1.45%	-2.15%	1.88%	-1.45%	NYSE Arca
ISHARES IBOXX HIGH YLD CORP	USD	86.93	-0.26%	0.10%	-0.75%	-0.42%	NYSE Arca
FINANCIAL SELECT SECTOR SPDR	USD	40.26	-0.40%	-0.89%	5.59%	36.57%	NYSE Arca
VANECK GOLD MINERS ETF	USD	31.71	-2.70%	-3.88%	-1.97%	-11.97%	NYSE Arca
ISHARES RUSSELL 2000 ETF	USD	228.05	-0.03%	0.28%	3.27%	16.32%	NYSE Arca
SPDR GOLD SHARES	USD	166.65	-0.85%	-0.67%	3.30%	-6.57%	NYSE Arca
ISHARES 20+ YEAR TREASURY BO	USD	147.69	0.31%	2.47%	2.32%	-6.37%	NASDAQ GM
INVESCO QQQ TRUST SERIES 1	USD	386.11	0.49%	3.21%	7.47%	23.07%	NASDAQ GM
ISHARES BIOTECHNOLOGY ETF	USD	159.60	-0.37%	0.73%	-1.12%	5.35%	NASDAQ GM
ENERGY SELECT SECTOR SPDR	USD	57.47	-0.66%	-0.83%	8.66%	51.64%	NYSE Arca
PROSHARES ULTRA VIX ST FUTUR	USD	16.44	0.86%	-2.03%	-32.98%	-84.56%	Cboe BZX
UNITED STATES OIL FUND LP	USD	57.15	-0.44%	-1.52%	9.23%	73.13%	NYSE Arca
ISHARES MSCI BRAZIL ETF	USD	29.32	-2.56%	-2.53%	-9.31%	-20.91%	NYSE Arca
SPDR S&P OIL & GAS EXP & PR	USD	106.36	-0.63%	-1.13%	9.62%	81.81%	NYSE Arca
UTILITIES SELECT SECTOR SPDR	USD	66.91	-0.59%	-0.51%	3.91%	6.71%	NYSE Arca
ISHARES US REAL ESTATE ETF	USD	109.84	-1.01%	-0.16%	5.61%	28.24%	NYSE Arca
SPDR S&P BIOTECH ETF	USD	124.81	-1.08%	0.51%	-0.65%	-11.34%	NYSE Arca
ISHARES IBOXX INVESTMENT GRA	USD	133.48	-0.05%	0.88%	0.07%	-3.37%	NYSE Arca
ISHARES JP MORGAN USD EMERGI	USD	109.89	-0.34%	0.35%	-0.17%	-5.19%	NASDAQ GM
REAL ESTATE SELECT SECTOR SPDR	USD	47.82	-1.20%	0.27%	5.87%	30.80%	NYSE Arca
ISHARES CHINA LARGE-CAP ETF	USD	40.33	-1.87%	-4.43%	4.59%	-13.14%	NYSE Arca
CONSUMER STAPLES SPDR	USD	71.25	-0.10%	-0.06%	1.64%	5.63%	NYSE Arca
VANECK JUNIOR GOLD MINERS	USD	43.27	-2.70%	-2.63%	15.63%	-20.22%	NYSE Arca
SPDR BBG BARC HIGH YIELD BND	USD	108.62	-0.18%	0.13%	-0.79%	-0.29%	NYSE Arca
VANGUARD REAL ESTATE ETF	USD	109.04	-1.12%	0.00%	5.36%	28.39%	NYSE Arca
GRAYSCALE BITCOIN TRUST BTC	USD	49.69	2.06%	1.93%	54.70%	55.28%	OTC US

USA Treasury Bonds Yield Curve (%)



Source: Bloomberg

Capital Market Laboratory Coordinator: Economist Bruno Bellido
Collaboration: Miguel Solimano, Alonso García, Ariam Loayza y Jairo Valverde
email: pulso@ulima.edu.pe
facebook.com/pulso@ulima.edu.pe

LIMA

Stocks

Ticker	Currency	Price	1D*	5D*	30D*	YTD*	Frequency	Volume (US\$)	Beta	Dividend Yield (%)	Price Earning	Market Cap. (M US\$)	Economic Sector*	Index Weight
▼ ALICORC1 PE**	S/.	6.45	-0.28%	1.18%	1.70%	-7.43%	100.00%	603,571	1.00	12.95	13.27	1,376.48	Industrial	3.53%
▼ ATACOCB1 PE**	S/.	0.15	-3.33%	0.00%	19.83%	5.07%	52.63%	15,808	1.11	0.00	-	34.31	Mining	1.02%
▼ BACKUSH1 PE**	S/.	18.90	-0.53%	-5.03%	8.00%	-6.20%	89.47%	25,348	0.73	4.95	9.07	6,217.77	Industrial	0.82%
▼ BAP PE**	US\$	129.95	-1.64%	-0.71%	14.66%	-19.08%	100.00%	67,696	1.23	0.94	-	12,264.98	Diverse	5.82%
▼ BVN PE**	US\$	7.80	-5.68%	-9.30%	14.54%	-35.00%	100.00%	463,714	1.17	0.00	-	2,146.26	Mining	5.88%
- CASAGRC1 PE**	S/.	5.85	0.00%	1.56%	8.33%	23.16%	94.74%	42,535	1.27	16.84	5.33	123.41	Agricultural	1.31%
- BBVAC1 PE**	S/.	2.00	0.00%	-1.96%	13.64%	-4.58%	94.74%	96,093	1.09	2.27	13.85	3,385.24	Finance	2.85%
▼ CORAREH1 PE**	S/.	1.49	-0.67%	12.88%	39.25%	67.42%	100.00%	208,828	1.11	18.50	2.27	469.08	Industrial	1.72%
▼ CPACASC1 PE**	S/.	4.95	-1.00%	-1.98%	10.24%	-6.60%	94.74%	28,469	0.68	15.96	35.36	574.90	Industrial	2.38%
▼ CVERDEC1 PE**	US\$	21.05	-1.64%	0.24%	20.98%	0.62%	100.00%	103,051	1.33	2.71	7.67	7,368.68	Mining	5.25%
▲ ENGEPEC1 PE**	S/.	2.16	2.37%	1.41%	16.13%	-8.86%	63.16%	1,623	0.69	15.40	9.40	1,295.91	Public Services	1.44%
▲ ENDISPC1**	S/.	4.40	2.33%	3.53%	12.24%	-18.52%	31.58%	6,017	0.80	3.88	8.99	703.67	Public Services	0.98%
▲ FERREYC1 PE**	S/.	1.99	1.53%	3.11%	17.06%	14.37%	100.00%	274,680	1.08	9.89	5.65	486.27	Diverse	4.90%
▲ AENZAC1 PE**	S/.	1.58	1.28%	-1.25%	5.33%	-9.20%	84.21%	2,058	0.98	0.00	-	345.02	Diverse	4.05%
▲ IFS PE**	US\$	28.50	1.28%	2.48%	27.01%	-7.89%	100.00%	77,399	1.25	2.70	7.86	3,290.26	Diverse	7.22%
▼ INRETC1 PE**	US\$	37.00	-0.54%	-0.27%	9.31%	-5.61%	100.00%	692,987	0.89	1.84	60.60	3,803.87	Diverse	5.28%
- LUSURC1 PE**	S/.	13.50	0.00%	-2.88%	15.09%	-47.06%	57.89%	5,672	#N/A N/F	7.70	14.63	1,646.38	Public Services	1.81%
- MINSURH1 PE**	S/.	3.10	0.00%	-1.90%	16.54%	67.57%	89.47%	9,553	0.99	10.78	2.40	2,238.30	Mining	3.09%
▲ PML PE**	US\$	0.14	1.41%	-1.37%	30.91%	35.85%	78.95%	1,476	1.25	0.00	-	38.07	Mining	2.12%
- RELAPAC1 PE**	S/.	0.15	0.00%	0.00%	-16.00%	113.04%	78.95%	14,279	0.78	0.00	2.71	306.27	Industrial	2.12%
▼ SCCO PE**	US\$	60.30	-2.40%	-5.80%	2.19%	-8.50%	84.21%	507,660	0.81	4.48	14.34	46,616.80	Mining	2.14%
- SIDERC1 PE**	S/.	1.45	0.00%	0.00%	20.83%	34.51%	94.74%	27,236	0.89	24.41	3.79	254.20	Industrial	1.43%
▼ TV PE**	US\$	0.19	-0.52%	-3.54%	35.46%	29.93%	89.47%	28,880	1.25	0.00	-	188.92	Mining	2.93%
▼ UNACEMC1 PE**	S/.	1.71	-0.58%	2.40%	17.12%	10.32%	100.00%	121,914	1.13	2.69	13.50	778.63	Industrial	3.00%
▲ VOLCABC1 PE**	S/.	0.71	2.90%	7.58%	14.52%	36.54%	100.00%	714,396	1.67	0.00	-	1,755.76	Mining	5.90%
▼ NEXAPEC1 PE**	S/.	3.39	-4.51%	-7.12%	16.90%	19.79%	63.16%	146,838	1.16	0.00	-	1,077.23	Mining	1.56%

Quantity of shares: 26
Source: Bloomberg, Económica
* Bloomberg Industry Classification System
** PER is used in the stock market and original currency of the instrument
*Legend: Variation 1D: 1 Day; 5D: 5 Days; 1M: 1 Month; YTD: Var.% 12/31/20 to date

Up 7
Down 13
Hold 6

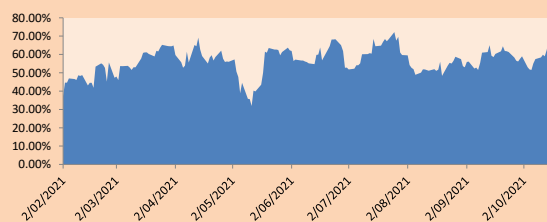
Sectorial Indices

	Close	1D*	5D*	30D*	YTD*	Beta
▼ S&P/BVLMining	390.00	-2.47%	-4.90%	4.28%	0.01%	0.76
▲ S&P/BVLConsumer	1,148.16	0.10%	0.05%	11.86%	5.47%	0.85
▲ S&P/BVLIndustrials	230.87	0.45%	2.97%	17.37%	21.15%	0.88
▼ S&P/BVLFinancials	951.03	-0.96%	0.22%	12.18%	-8.02%	1.18
▲ S&P/BVLConstruction	245.91	0.03%	2.91%	15.63%	17.59%	0.79
▲ S&P/BVLPublicSvcs	566.08	0.44%	-0.07%	12.64%	-7.82%	0.37
▲ S&P/BVLElectricUtil	552.63	0.43%	-0.07%	12.64%	-7.82%	0.37

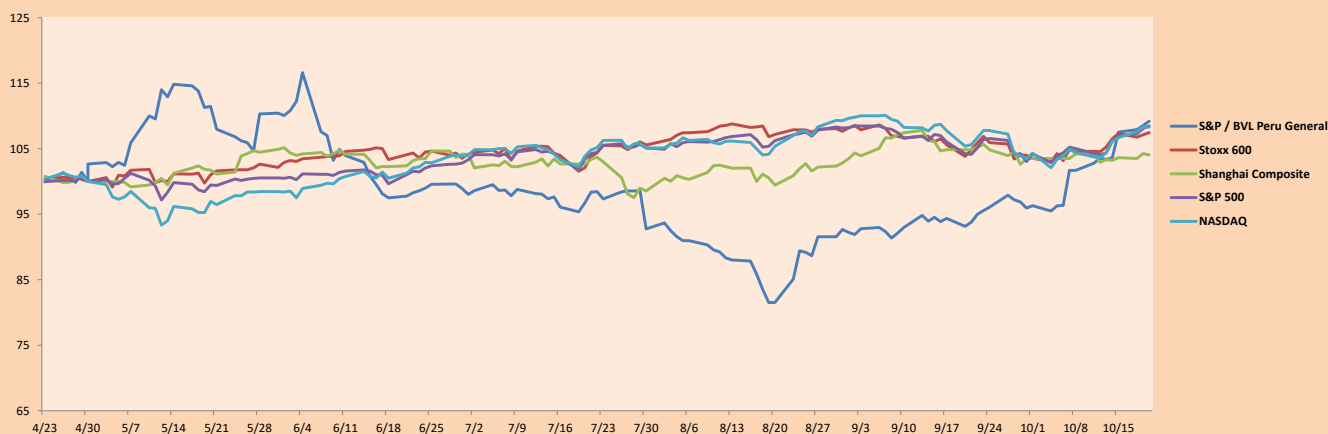
S&P/BVLConstructionTRPEN

*Legend: Variation 1D: 1 Day; 5D: 5 Days; 1M: 1 Month; YTD: Var.% 12/31/20 to date

Correlation Graph of Returns of Mining Index against Metallic Index of London (3 months)



Indices (6 months)



Base: 30/04/21=100
Source: Bloomberg

Capital Market Laboratory Coordinator: Economist Bruno Bellido
Collaboration: Miguel Solimano, Alonso García, Ariam Loayza y Jairo Valverde
email: pulsobursatil@ulima.edu.pe
facebook: www.facebook.com/pulsobursatil.ul

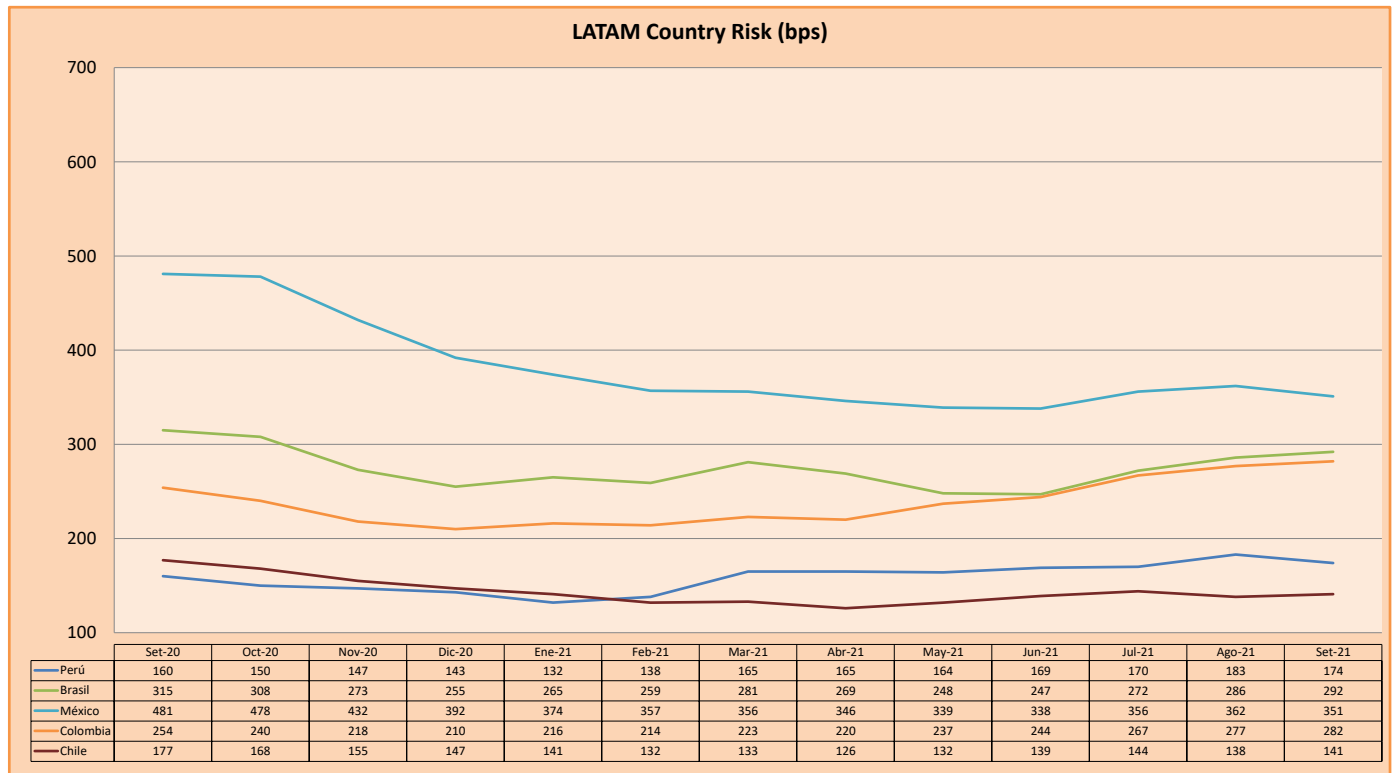
SOVEREIGN RATING

RISK RATINGS			
Moody's	S&P	Fitch	
Aaa	AAA	AAA	Prime
Aa1	AA+	AA+	High credit quality
Aa2	AA	AA	
Aa3	AA-	AA-	
A1	A+	A+	Medium-high grade, with low credit risk
A2	A	A	
A3	A-	A-	
Baa1	BBB+	BBB+	Moderate Credit Risk
Baa2	BBB	BBB	
Baa3	BBB-	BBB-	
Ba1	BB+	BB+	It has speculative elements and it is subject to substantial credit risk
Ba2	BB	BB	
Ba3	BB-	BB-	
B1	B+	B+	It is considered speculative and it has high credit risk
B2	B	B	
B3	B-	B-	
Caa1	CCC+	CCC	Bad credit conditions and it is subject to high credit risk
Caa2	CCC		
Caa3	CCC-		
Ca	CC	DDD	Very close to default or in default
C	C		
	D		

Source: Bloomberg

Latin America Credit Rating			
Clasificadora de riesgo			
Country	Moody's	Fitch	S&P
Peru	Baa1	BBB	BBB+
México	Ba2	BB-	BB-
Venezuela	C	WD	NR
Brazil	Ba2	BB-	BB-
Colombia	Baa2	BB+	BB+
Chile	A1	A-	A
Argentina	Ca	WD	CCC+
Panama	Baa2	BBB-	BBB

Source: Bloomberg



Source: BCRP

Capital Market Laboratory Coordinator: Economist Bruno Bellido
Collaboration: Miguel Solimano, Alonso García, Ariam Loayza y Jairo Valverde
email: pulsobursatil@ulima.edu.pe
facebook: www.facebook.com/pulsobursatil.ul