

PULSO BURSÁTIL

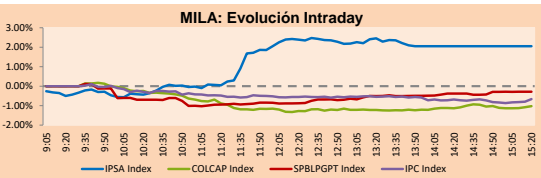
FACULTAD DE CIENCIAS EMPRESARIALES Y ECONÓMICAS
CARRERA DE ECONOMÍA
LABORATORIO DE MERCADO DE CAPITALES



MILA

Main Indexes	Close	1 D	5 D	1 M	YTD	Cap. Burs. (US\$ bill)
▲ IPSA (Chile)	4,470.52	2.46%	6.26%	7.84%	7.02%	102.46
▲ IGPA (Chile)	22,413.32	2.10%	6.10%	8.32%	6.69%	122.97
▼ COLSC (Colombia)	980.85	-0.28%	0.38%	-0.99%	-7.38%	4.53
▼ COLCAP (Colombia)	1,384.59	-0.69%	-0.43%	-1.17%	-3.71%	81.00
▼ S&P/BVL (Perú)*	20,488.76	-0.21%	-1.10%	5.74%	-1.60%	93.57
▼ S&P/BVL SEL (Perú)	543.26	-0.35%	-1.35%	7.28%	-1.48%	84.92
▲ S&P/BVL LIMA 25	28,577.88	0.23%	-0.16%	10.05%	13.41%	92.42
▲ IPC (México)	52,114.12	-0.26%	0.89%	1.91%	18.26%	321.97
▲ S&P MILA 40	474.37	1.21%	2.58%	3.85%	-11.27%	6,542.16

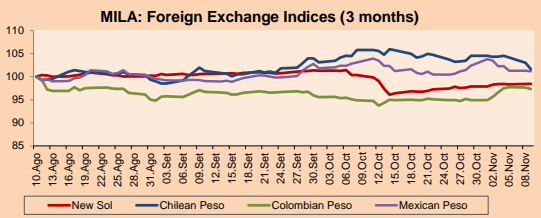
*Legend: Variation 1D: 1 day; 5D: 5 days; 1M: 1 Month; YTD: Var% 12/31/20 to date



Source: Bloomberg

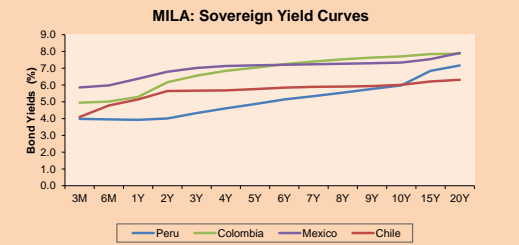
Currency	Price	1D*	5D*	30 D*	YTD*
▲ Sol (PEN)	4,014.49	0.02%	0.16%	-1.77%	10.97%
▼ Chilean Peso (CLP)	792.15	-1.30%	-2.53%	-3.87%	11.29%
▼ Colombian Peso (COP)	3,862.90	-0.35%	1.76%	2.55%	12.63%
▼ Mexican Peso (MXN)	20.32	-0.11%	-2.24%	-1.84%	2.03%

*Legend: Variation 1D: 1 day; 5D: 5 days; 1M: 1 Month; YTD: Var% 12/31/20 to date



Base: 10/08/21=100
Source: Bloomberg

Fixed Income	Currency	Price	Bid Yield (%)	Ask Yield (%)	Duration
PERU 7.35 07/21/25	USD	120.536	1.66	1.54	3.27
PERU 4.125 08/25/27	USD	110.571	2.22	2.12	5.19
PERU 8.75 11/21/33	USD	156.844	3.09	3.04	8.32
PERU 6.55 03/14/37	USD	137.873	3.40	3.34	10.15
PERU 5.625 11/18/2050	USD	139.877	3.46	3.42	16.30
CHILE 2.25 10/30/22	USD	101.687	0.72	0.28	0.96
CHILE 3.125 01/21/26	USD	106.51	1.56	1.47	3.93
CHILE 3.625 10/30/42	USD	109.373	3.04	3.00	15.17
COLOM 11.85 03/09/28	USD	153.052	2.81	2.54	4.88
COLOM 10.375 01/28/33	USD	146.126	5.02	4.90	7.41
COLOM 7.375 09/18/37	USD	123.403	5.21	5.17	10.01
COLOM 6.125 01/18/41	USD	110.697	5.26	5.21	11.58
MEX 4 10/02/23	USD	110.697	5.26	5.208	11.58
MEX5.55 01/45	USD	120.981	4.15	4.12	13.88



Source: Bloomberg

Lima, november 9, 2021

Equity

Largest gains	Exchange	Currency	Price	▲ %
CMPC	Chile	CLP	1549.00	9.09
FALABELLA SA	Chile	CLP	2800.00	8.95
EMPRESAS COPEC	Chile	CLP	6450.00	5.29
BANCO CRED INVER	Chile	CLP	29449.00	5.11
BANCO DE CHILE	Chile	CLP	75.54	4.55

Per Turnover	Exchange	Amount (US\$)
AMERICA MOVIL-L	Mexico	66,232,037
WALMART DE MEXIC	Mexico	45,300,660
GRUPO F BANORT-O	Mexico	35,703,714
GRUPO MEXICO-B	Mexico	26,709,964
CENCOSUD SA	Chile	26,609,985

Largest losses	Exchange	Currency	Price	▼ %
CEMEX SAB-CPO	Mexico	MXN	13.63	-4.42
COLBUN SA	Chile	CLP	57.1	-3.55
SOUTHERN COPPER	Peru	USD	59.77	-3.21
SURAMERICANA	Colombia	COP	21400	-2.15
WALMART DE MEXIC	Mexico	MXN	74.54	-1.74

Per Volume	Exchange	Volume
ITAU CORPBANCA	Chile	2,312,160,809
BANCO SANTANDER	Chile	199,300,144
ENEL AMERICAS SA	Chile	110,947,842
BANCO DE CHILE	Chile	100,299,215
AMERICA MOVIL-L	Mexico	72,380,286

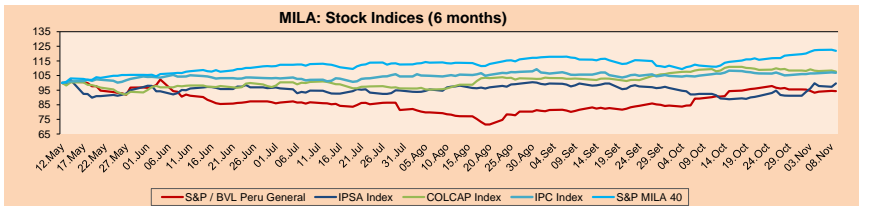
MILA

Peru: The General Index ended today's session with a negative result of -0.21%. The index maintains a annual cumulative negative trend of -1.60% in local currency, while the adjusted return in dollars amounts to -11.33%. Then, the S&P / BVL Peru SEL changed by -0.35% while the S&P / BVL LIMA 25 by +0.23%. The PEN spot reached \$/ 4.0149. Headline: Dollar course slightly higher despite the BCR's intervention with the purchase of US\$ 50m

Chile: The IPSA index ended the day with a positive return of +2.46%. The sectors that benefited the most from the session were Non Basic Consumer Products (+8.49%) and Energy (+5.29%). The best performing stocks were Empresas CMPC SA (+9.09%) and Falabella SA (+8.95%). Headline: IPSA takes flight after the setback suffered by the fourth withdrawal from the AFPs in the Senate

Colombia: The COLCAP index closed today with a negative return of -0.69%. The sectors that lost the most from the session were Consumer Staples (-1.26%) and Financials (-1.18%). The stocks with the worst performance were Mineras SA (-2.91%) and Grupo de Inv Suramericana (-2.15%). Headline: Total pension expenditure in relation to GDP is still too high

Mexico: The IPC index closed the day with a negative return of -0.32%. The sectors that lost the most of the day were Health Care (-2.24%) and Materials (-1.84%). The worst performing stocks were Cemex SAB (-4.35%) and Asea SAB (-2.84%). Headline: Inflation stands at 6.24% in October, its highest level in almost four years

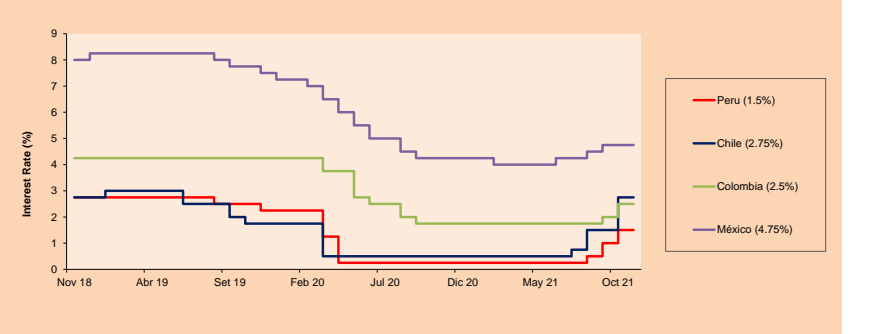


Base: 13/05/21=100
Source: Bloomberg

ETFs

ETFs	Curr.	Close	1D	5D	30 D	YTD	Exchange
▼ iShares MSCI All Peru Caped Index Fund	USD	29.73	-0.17%	-0.20%	6.71%	-14.27%	NYSE Arca
▲ iShares MSCI All Chile Caped Index Fund	USD	27.35	2.94%	8.32%	11.31%	-9.47%	Cboe BZX
▼ Global X MSCI Colombia	USD	10.5918	-0.22%	-1.65%	-2.10%	-6.76%	NYSE Arca
▼ iShares MSCI Mexico Capped	USD	49.84	-0.14%	3.77%	3.73%	15.93%	NYSE Arca
▼ iShares MSCI Emerging Markets	USD	51.19	-0.39%	0.65%	0.73%	-0.93%	NYSE Arca
▼ Vanguard FTSE Emerging Markets	USD	51.3	-0.23%	1.36%	1.00%	2.37%	NYSE Arca
▼ iShares Core MSCI Emerging Markets	USD	62.88	-0.36%	0.82%	0.90%	1.35%	NYSE Arca
▼ iShares JP Morgan Emerging Markets Bonds	USD	63.74	-0.23%	0.95%	1.06%	4.35%	Cboe BZX
▲ Morgan Stanley Emerging Markets Domestic	USD	5.84	0.69%	1.57%	0.00%	-7.15%	New York

MILA: Policy Rate



Source: Bloomberg

Capital Market Laboratory Coordinator: Economista Bruno Bellido
Collaboration: Alonso García, Ariam Loayza, Miguel Solimano y Jairo Valverde
email: pulso_bursatil@ulima.edu.pe
facebook: www.facebook.com/pulso_bursatil.ul

LIMA

Stocks

Ticker	Currency	Price	1D*	5D*	30D*	YTD*	Frequency	Volume (US\$)	Beta	Dividend Yield (%)	Price Earning	Market Cap. (M US\$)	Economic Sector*	Index Weight
▼ ALICORC1 PE**	S/.	6.44	-0.28%	0.38%	-0.99%	-7.38%	100.00%	3,214,187	1.02	12.97	13.25	1,367.01	Industrial	3.53%
▲ ATACOCB1 PE**	S/.	0.14	0.00%	0.00%	21.74%	1.45%	89.47%	6,094	1.11	0.00	-	32.95	Mining	1.02%
▲ BACKUSH1 PE**	S/.	19.99	0.71%	0.40%	9.84%	-0.79%	100.00%	1,423	0.73	4.68	7.47	6,340.84	Industrial	0.82%
▼ BAP PE**	US\$	125.90	-1.24%	-4.53%	-0.08%	-21.61%	100.00%	90,791	1.20	0.97	-	11,882.73	Diverse	5.82%
▲ BVN PE**	US\$	7.46	1.08%	0.13%	1.63%	-37.83%	100.00%	71,720	1.17	0.00	-	2,052.71	Mining	5.88%
- CASAGRC1 PE**	S/.	6.10	0.00%	4.27%	14.02%	28.42%	84.21%	32,936	1.29	16.15	4.20	127.98	Agricultural	1.31%
- BBVAC1 PE**	S/.	2.02	0.00%	1.00%	6.32%	-3.63%	94.74%	2,656	1.12	2.25	13.99	3,400.36	Finance	2.85%
- CORAREI1 PE**	S/.	1.60	0.00%	7.38%	40.35%	79.78%	100.00%	118,213	1.14	17.22	2.44	471.50	Industrial	1.72%
▲ CPACASC1 PE**	S/.	5.05	3.06%	3.91%	12.47%	-4.72%	94.74%	27,530	0.71	15.64	36.07	582.31	Industrial	2.38%
- CVERDEC1 PE**	US\$	23.00	0.00%	6.48%	31.43%	9.94%	100.00%	159,850	1.36	2.48	8.38	8,051.29	Mining	5.25%
▲ ENGEPEC1 PE**	S/.	2.28	1.79%	6.05%	16.92%	-3.80%	84.21%	26,824	0.69	14.59	9.92	1,360.41	Public Services	1.44%
▲ ENDISPC1**	S/.	4.54	3.42%	3.18%	15.82%	-15.93%	73.68%	9,402	0.80	3.76	9.28	722.08	Public Services	0.98%
▼ FERREYC1 PE**	S/.	1.88	-1.05%	-2.59%	4.44%	8.05%	100.00%	41,780	1.12	10.47	5.33	456.87	Diverse	4.90%
▲ AENZAC1 PE**	S/.	1.60	3.23%	3.23%	8.11%	-8.05%	94.74%	335,855	0.97	0.00	-	347.47	Diverse	4.05%
▼ IFS PE**	US\$	27.18	-1.45%	-5.20%	13.25%	-12.15%	94.74%	20,991	1.24	2.83	7.53	3,137.87	Diverse	7.22%
- INRETC1 PE**	US\$	36.90	0.00%	-1.34%	5.13%	-5.87%	84.21%	900	0.90	0.00	60.75	3,793.59	Diverse	5.28%
▲ LUSURC1 PE**	S/.	13.90	1.46%	0.00%	17.80%	-45.49%	84.21%	21,430	#N/A N/A	7.47	15.06	1,685.88	Public Services	1.81%
- MINSUR1 PE**	S/.	3.15	0.00%	1.61%	14.55%	70.27%	100.00%	1,213,677	0.99	10.61	2.43	2,261.94	Mining	3.09%
▼ PML PE**	US\$	0.13	-2.19%	-5.63%	11.67%	26.42%	84.21%	16,153	1.25	0.00	-	35.43	Mining	2.12%
- RELAPAC1 PE**	S/.	0.15	0.00%	0.00%	-16.00%	113.04%	10.53%	14,200	0.80	0.00	2.17	#VALOR!	Industrial	2.12%
▼ SCCO PE**	US\$	59.77	-3.21%	0.29%	2.00%	-9.30%	94.74%	101,156	0.77	5.35	14.22	46,207.07	Mining	2.14%
▼ SIDERC1 PE**	S/.	1.50	-1.32%	3.45%	20.00%	39.15%	100.00%	43,325	0.89	23.60	3.58	261.53	Industrial	1.43%
▼ TV PE**	US\$	0.16	-0.62%	-11.11%	8.84%	8.84%	84.21%	22,506	1.26	0.00	-	158.25	Mining	2.93%
- UNACEMC1 PE**	S/.	1.67	0.00%	-1.76%	12.08%	7.74%	100.00%	36,911	1.15	2.75	13.19	756.25	Industrial	3.00%
▲ VOLCABC1 PE**	S/.	0.67	1.52%	-2.90%	11.67%	28.85%	100.00%	101,739	1.68	0.00	-	1,721.80	Mining	5.90%
- NEXAPEC1 PE**	S/.	3.45	0.00%	1.77%	20.21%	21.91%	78.95%	42,326	1.16	0.00	-	1,090.39	Mining	1.56%

Quantity of shares: 26

Source: Bloomberg, Economática

* Bloomberg Industry Classification System

** PER is used in the stock market and original currency of the instrument

*Legend: Variation 1D: 1 Day; 5D: 5 Days; 1M: 1 Month; YTD: Var.% 12/31/20 to date

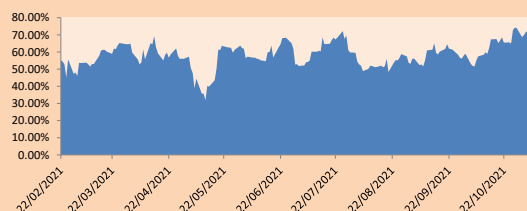
Sectorial Indices

	Close	1D*	5D*	30D*	YTD*	Beta
▼ S&P/BVL Mining	390.25	-0.74%	1.40%	4.06%	0.08%	0.77
▲ S&P/BVL Consumer	1,159.10	0.32%	0.28%	9.37%	6.47%	0.87
▲ S&P/BVL Industrials	227.83	0.63%	0.24%	13.09%	19.56%	0.89
▼ S&P/BVL Financials	925.71	-1.20%	-4.35%	-0.43%	-10.47%	1.17
▲ S&P/BVL Construction	246.75	1.27%	1.33%	14.72%	17.99%	0.79
▲ S&P/BVL Public Svcs	578.85	1.15%	2.40%	9.95%	-5.74%	0.36
▲ S&P/BVL Electric Util	565.11	1.15%	2.40%	9.95%	-5.74%	0.36

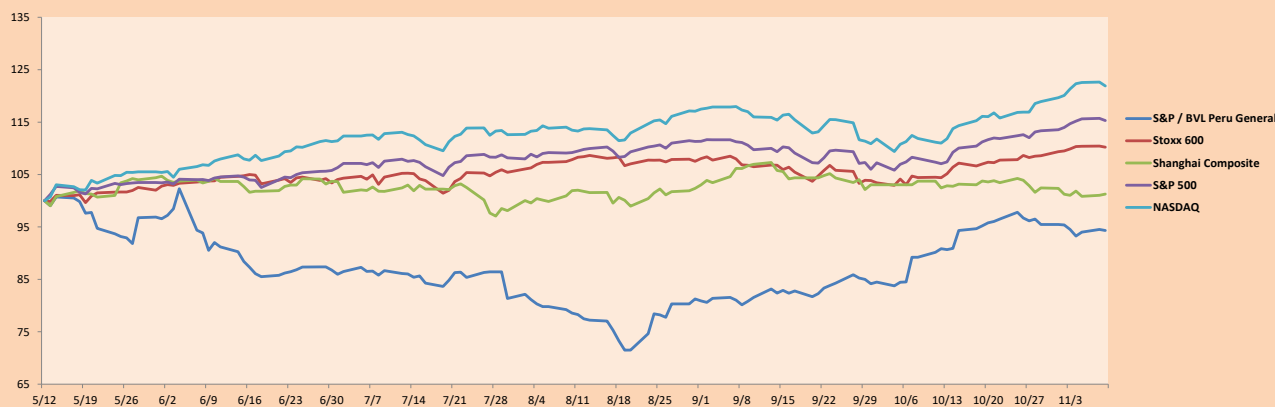
S&P/BVL Construction TRPEN

*Legend: Variation 1D: 1 Day; 5D: 5 Days; 1M: 1 Month; YTD: Var.% 12/31/20 to date

Correlation Graph of Returns of Mining Index against Metallic Index of London (3 months)



Indices (6 months)



Base: 12/05/21=100
Source: Bloomberg

Capital Market Laboratory Coordinator: Economist Bruno Bellido
Collaboration: Alonso García, Ariam Loayza, Miguel Solimano y Jairo Valverde
email: pulsobursatil@ulima.edu.pe
facebook: www.facebook.com/pulsobursatil.ul

The content of this document is just for informational purposes. The information and opinions expressed should not be considered as recommendations for future decisions. Under any circumstances, the Capital Market Laboratory of University of Lima will be responsible for the use of the statements in this document.

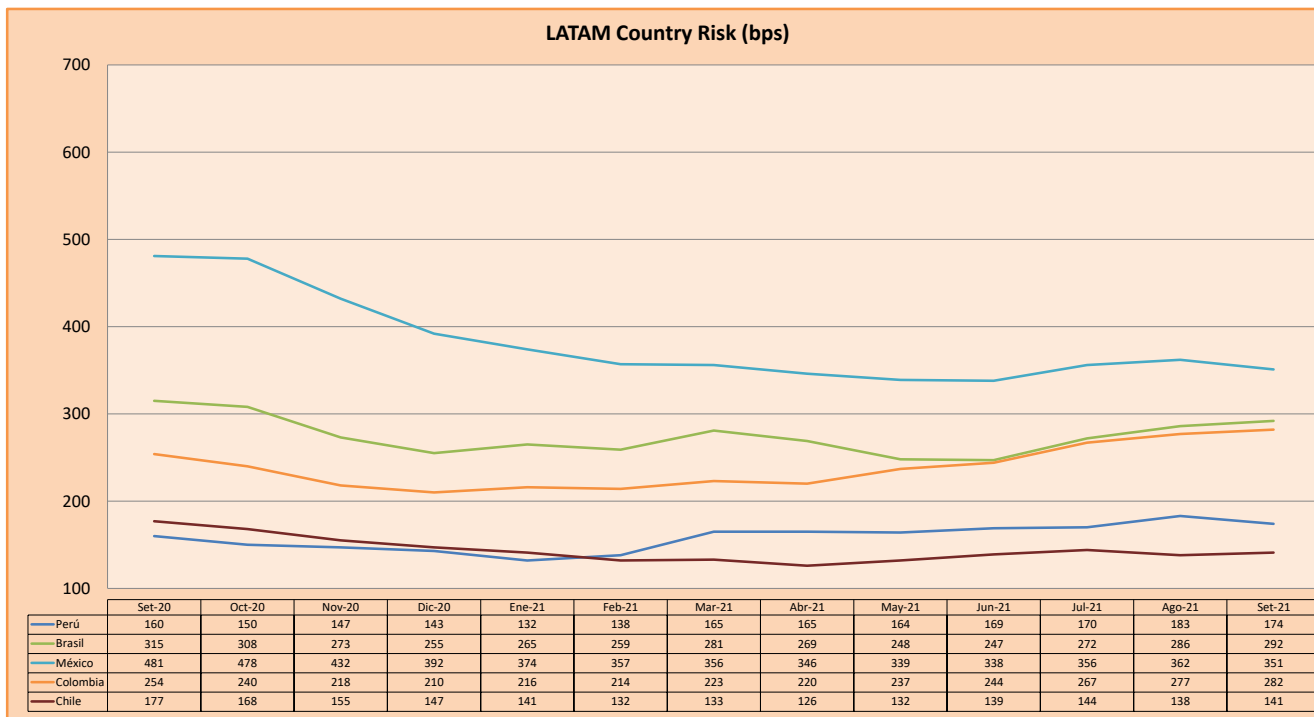
SOVEREIGN RATING

RISK RATINGS			
Moody's	S&P	Fitch	
Aaa	AAA	AAA	Prime
Aa1	AA+	AA+	High credit quality
Aa2	AA	AA	
Aa3	AA-	AA-	
A1	A+	A+	Medium-high grade, with low credit risk
A2	A	A	
A3	A-	A-	
Baa1	BBB+	BBB+	Moderate Credit Risk
Baa2	BBB	BBB	
Baa3	BBB-	BBB-	
Ba1	BB+	BB+	It has speculative elements and it is subject to substantial credit risk
Ba2	BB	BB	
Ba3	BB-	BB-	
B1	B+	B+	It is considered speculative and it has high credit risk
B2	B	B	
B3	B-	B-	
Caa1	CCC+		Bad credit conditions and it is subject to high credit risk
Caa2	CCC		
Caa3	CCC-		
Ca	CC		Very close to default or in default
	C		
C	D	DDD	

Source: Bloomberg

Latin America Credit Rating			
Clasificadora de riesgo			
Country	Moody's	Fitch	S&P
Peru	Baa1	BBB	BBB+
México	Ba2	BB-	BB-
Venezuela	C	WD	NR
Brazil	Ba2	BB-	BB-
Colombia	Baa2	BB+	BB+
Chile	A1	A-	A
Argentine	Ca	WD	CCC+
Panama	Baa2	BBB-	BBB

Source: Bloomberg



Source: BCRP

Capital Market Laboratory Coordinator: Economist Bruno Bellido
Collaboration: Alonso García, Ariam Loayza, Miguel Solimano y Jairo Valverde
email: pulsobursatil@ulima.edu.pe
facebook: www.facebook.com/pulsobursatil.ul

The content of this document is just for informational purposes. The information and opinions expressed should not be consider as recommendations for future decisions. Under any circumstances, the Capital Market Laboratory of University of Lima will be responsible for the use of the statements in this document.