

PULSO BURSÁTIL

FACULTAD DE CIENCIAS EMPRESARIALES Y ECONÓMICAS
CARRERA DE ECONOMÍA
LABORATORIO DE MERCADO DE CAPITALES

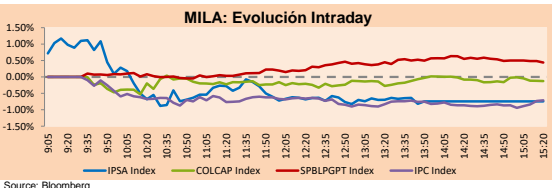


MILA

Lima, november 18, 2021

Main Indexes	Close	1 D	5 D	1 M	YTD	Cap. Burs. (US\$ bill)
▼ IPISA (Chile)	4,281.66	-0.27%	-5.26%	6.81%	2.50%	95.45
▼ IGPA (Chile)	21,500.57	-0.34%	-5.02%	7.25%	2.35%	114.16
▲ COLSC (Colombia)	945.31	0.06%	-1.85%	-3.19%	-10.73%	4.37
▲ COLCAP (Colombia)	1,337.52	0.52%	-2.06%	-6.22%	-6.98%	76.46
▲ S&P/BVL (Perú*)	20,174.33	0.41%	-2.38%	-1.87%	-3.11%	91.44
▲ S&P/BVL SEL (Perú)	535.24	0.50%	-1.78%	-1.27%	-2.93%	82.55
▲ S&P/BVL LIMA 25	28,755.14	0.86%	0.02%	2.43%	14.11%	90.23
▲ IPC (México)	50,831.95	-0.42%	-1.69%	-3.52%	15.35%	308.13
▼ S&P MILA 40	444.80	-0.32%	-6.59%	-3.94%	-16.80%	6,402.46

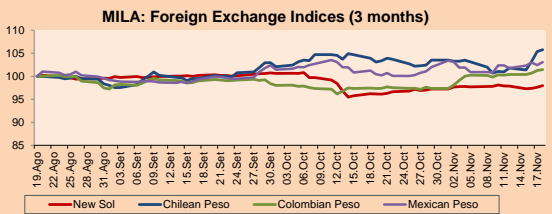
*Legend: Variation 1D: 1 day; 5D: 5 days; 1M: 1 Month; YTD: Var% 12/31/20 to date



Source: Bloomberg

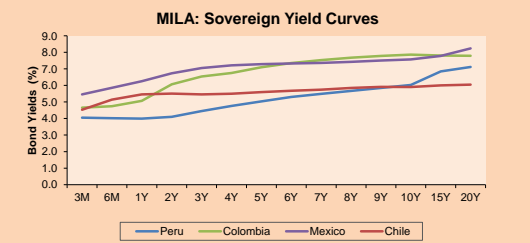
Currency	Price	1D*	5D*	30 D*	YTD*
▲ Sol (PEN)	4,021.3	0.36%	0.08%	1.90%	11.15%
▲ Chilean Peso (CLP)	832.30	0.36%	4.78%	2.60%	16.93%
▲ Colombian Peso (COP)	3,925.40	0.18%	1.21%	4.20%	14.45%
▲ Mexican Peso (MXN)	20.78	0.61%	0.69%	2.62%	4.34%

*Legend: Variation 1D: 1 day; 5D: 5 days; 1M: 1 Month; YTD: Var% 12/31/20 to date



Base: 19/08/21=100
Source: Bloomberg

Fixed Income	Currency	Price	Bid Yield (%)	Ask Yield (%)	Duration
PERU 7.35 07/21/25	USD	120.178	1.70	1.60	3.25
PERU 4.125 08/25/27	USD	109.947	2.31	2.23	5.16
PERU 8.75 11/21/33	USD	155.15	3.22	3.15	8.28
PERU 6.55 03/14/37	USD	135.351	3.56	3.52	10.10
PERU 5.625 11/18/2050	USD	136.963	3.59	3.55	16.47
CHILE 2.25 10/30/22	USD	101.557	0.83	0.84	0.94
CHILE 3.125 01/21/26	USD	105.452	1.81	1.71	3.90
CHILE 3.625 10/30/42	USD	105.45	3.29	3.24	15.07
COLOM 11.85 03/09/28	USD	152.527	2.83	2.61	4.86
COLOM 10.375 01/28/33	USD	144.656	5.15	5.03	7.35
COLOM 7.375 09/18/37	USD	120.537	5.46	5.39	9.91
COLOM 6.125 01/18/41	USD	107.827	5.49	5.43	11.46
MEX 4 10/02/23	USD	107.827	5.492	5.428	11.46
MEX5.55 01/45	USD	116.912	4.26	4.24	13.61



Source: Bloomberg

Equity

Largest gains	Exchange	Currency	Price	▲%
GRUPO F BANORT-O	Mexico	MXN	131.57	2.10
GRUPO BIMBO-A	Mexico	MXN	60.95	1.85
ORBIA ADVANCE CO	Mexico	MXN	51.90	1.29
KIMBERLY-CLA M-A	Mexico	MXN	31.95	0.85
INDUSTRIAS PENOL	Mexico	MXN	266.04	0.78

Per Turnover	Exchange	Amount (US\$)
WALMART DE MEXIC	Mexico	77,854,287
GRUPO F BANORT-O	Mexico	71,137,139
AMERICA MOVIL-L	Mexico	43,246,142
GRUPO MEXICO-B	Mexico	41,137,018
BANCO DE CHILE	Chile	29,462,766

Largest losses	Exchange	Currency	Price	▼%
CAP	Chile	CLP	6861	-6.01
CENCOSUD SA	Chile	CLP	1175	-5.55
BUENAVENTURA-ADR	Peru	USD	7.4	-4.88
PARQUE ARAUCO	Chile	CLP	800	-4.88
FALABELLA SA	Chile	CLP	2713.9	-4.78

Per Volume	Exchange	Volume
ITAU CORPBANCA	Chile	472,370,425
BANCO DE CHILE	Chile	308,207,221
BANCO SANTANDER	Chile	241,420,295
ENEL CHILE SA	Chile	85,781,324
AMERICA MOVIL-L	Mexico	47,582,818

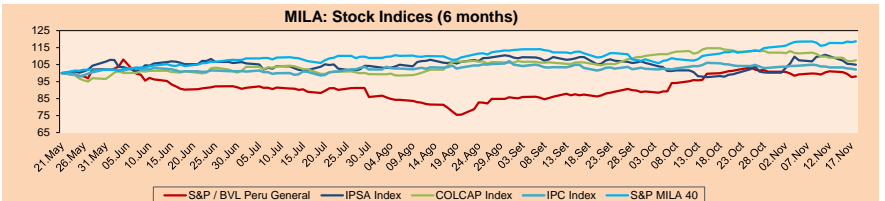
MILA

Peru: The General Index ended today's session with a positive result of +0.41%. The index maintains an annual cumulative positive trend of -3.11% in local currency, while the adjusted return in dollars amounted to -12.83%. Then, the S&P / BVL Peru SEL changed by +0.50% while the S&P / BVL LIMA 25 by +0.86%. The PEN spot reached \$/ 4.0125. Headline: Congress votes today on proposal of three new directors for Central Reserve Bank.

Chile: The IPISA index ended the day with a negative return of -0.27%. The sectors that lost the most from the session were Information Technology (-4.20%) and Consumer Discretionary (-1.93%). The worst performing stocks were Grupo Security SA (-4.39%) and Sonda SA (-4.20%). Headline: Chile's GDP keeps pace and records 11.6% growth for the year.

Colombia: The COLCAP index closed today with a positive return of +0.52%. The sector that lost the most from the session was Energy (-0.52%). The stocks with the worst performance were Grupo Aval Acciones y Valores (-2.52%) and Canacol Energy Ltd (-1.59%). Headline: Colombia's third quarter GDP pushes forecasts upwards.

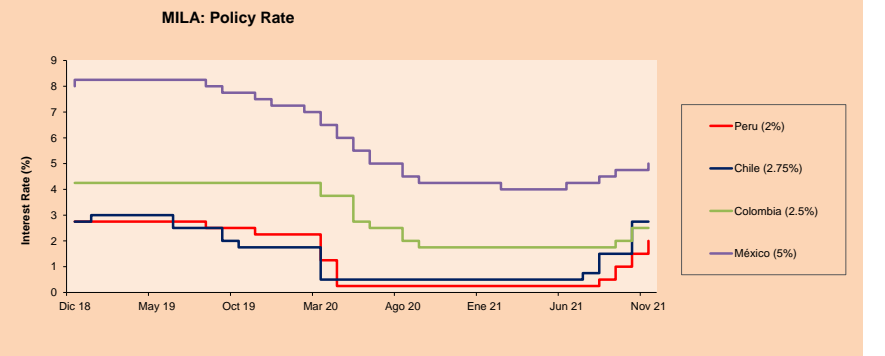
Mexico: The IPC index closed the day with a negative return of -0.42%. The sectors that lost the most of the day were Communication Services (-1.59%) and Health Care (-1.48%). The worst performing stocks were El Puerto de Liverpool SAB de CV (-2.21%) and América Móvil SAB de CV (-2.09%). Headline: Positive variation for Mexico's economy is estimated for October 2021: Inegi.



Base: 24/05/21=100
Source: Bloomberg

ETFs

	Curr.	Close	1D	5D	30 D	YTD	Exchange
▲ iShares MSCI All Peru Caped Index Fund	USD	29.6	0.10%	-1.95%	-2.57%	-14.65%	NYSE Arca
▲ iShares MSCI All Chile Caped Index Fund	USD	24.88	0.48%	-9.63%	3.07%	-17.64%	Cboe BZX
▲ Global X MSCI Colombia	USD	10.09	1.00%	-3.81%	-8.50%	-11.18%	NYSE Arca
▲ iShares MSCI Mexico Capped	USD	47.54	-0.98%	-2.32%	-4.71%	10.58%	NYSE Arca
▼ iShares MSCI Emerging Markets	USD	51	-1.22%	-1.66%	-2.86%	-1.30%	NYSE Arca
▼ Vanguard FTSE Emerging Markets	USD	51.15	-1.20%	-1.71%	-2.24%	2.08%	NYSE Arca
▼ iShares Core MSCI Emerging Markets	USD	62.63	-1.07%	-1.59%	-2.72%	0.95%	NYSE Arca
▲ iShares JP Morgan Emerging Markets Bonds	USD	64.02	-0.65%	-0.45%	-0.31%	4.81%	Cboe BZX
▲ Morgan Stanley Emerging Markets Domestic	USD	5.86	0.17%	-0.34%	-1.35%	-6.84%	New York



Source: Bloomberg

Capital Market Laboratory Coordinator: Economist Bruno Bellido
Collaboration: Alonso García, Ariam Loayza, Miguel Solimano and Jairo Valverde
email: pulsobursatil@ulima.edu.pe
facebook: www.facebook.com/pulsobursatil.ul

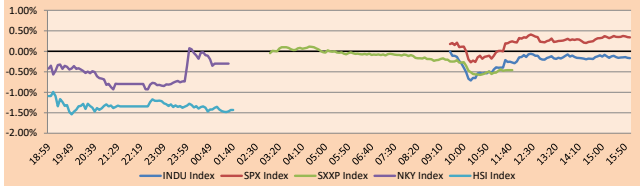
The content of this document is just for informational purposes. The information and opinions expressed should not be considered as recommendations for future decisions. Under any circumstances, the Capital Market Laboratory of University of Lima will be responsible for the use of the statements in this document.

WORLD

Main Indices	Close	1 D*	5 D*	1 M*	YTD*	Market Cap. (US\$ Mill.)
▼ Dow Jones (USA)	35,870.95	-0.17%	-0.14%	1.74%	17.20%	11,357,089
▲ Standard & Poor's 500 (EEUU)	4,704.54	0.34%	1.19%	4.86%	25.25%	41,412,019
▲ NASDAQ Composite (USA)	15,993.71	0.45%	1.94%	6.47%	24.09%	27,120,263
▼ Stoxx EUROPE 600 (Europe)	497.70	-0.46%	0.50%	4.42%	22.22%	11,939,942
▼ DAX (Germany)	16,221.73	-0.18%	0.86%	4.83%	18.24%	1,541,966
▼ FTSE 100 (United Kingdom)	7,255.96	-0.48%	-1.74%	0.72%	12.31%	1,548,326
▼ CAC 40 (France)	7,141.98	-0.21%	1.17%	7.03%	28.65%	2,090,308
▼ IBEX 35 (Spain)	8,903.20	-1.00%	-2.08%	-0.37%	10.27%	522,946
▼ MSCI AC Asia Pacific Index	199.04	-0.47%	0.40%	0.84%	0.02%	26,121,603
▼ HANG SENG (Hong Kong)	25,319.72	-1.29%	0.28%	-1.81%	-7.02%	3,917,819
▼ SHANGHAI SE Comp. (China)	3,520.71	-0.47%	-0.34%	-2.02%	1.37%	7,204,137
▼ NIKKEI 225 (Japan)	29,598.66	-0.30%	1.10%	1.31%	7.85%	4,216,407
▲ S&P/ASX 200 (Australia)	7,379.20	0.13%	-0.04%	0.06%	12.03%	1,723,912
▼ KOSPI (South Korea)	2,947.38	-0.42%	-1.69%	-2.70%	2.57%	1,774,183

*Legend: Variation 1D: 1 Day; 5D: 5 Days; 1M: 1 Month; YTD: Var.% 12/31/20 to date

Global Markets: Intraday Evolution (var %)

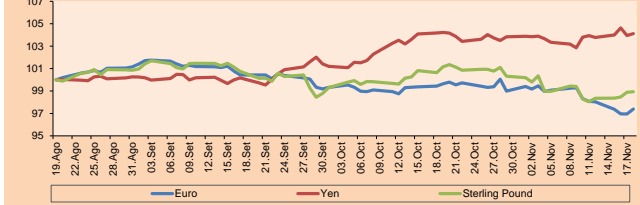


Source: Bloomberg

Currency	Price	1 D*	5 D*	1 M*	YTD*
▲ Euro	1.1371	0.46%	-0.70%	-2.25%	-6.92%
▲ Yen	114,2600	0.16%	0.18%	-0.10%	10.66%
▲ Sterling Pound	1.3494	0.05%	0.91%	-2.20%	-1.29%
▲ Yuan	6.3861	0.13%	-0.08%	0.05%	-2.16%
▲ Hong Kong Dollar	7.7890	0.01%	-0.04%	0.18%	0.46%
▲ Brazilian Real	5.5680	0.76%	2.99%	-0.33%	7.07%
▲ Argentine Peso	100.3966	0.05%	0.20%	1.10%	19.31%

*Legend: Variation 1D: 1 Day; 5D: 5 Days; 1M: 1 Month; YTD: Var.% 12/31/20 to date

Foreign Exchange Indices (3 months)



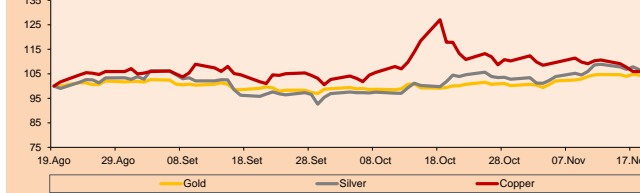
Base: 19/08/21=100

Source: Bloomberg

Commodities	Close	1 D*	5 D*	1 M*	YTD*
▼ Oro (US\$ Oz. T) (LME)	1,858.94	-0.46%	-0.17%	5.07%	-2.08%
▼ Plata (US\$ Oz. T) (LME)	24.80	-1.12%	-1.79%	4.81%	-6.05%
- Cobre (US\$ TM) (LME)	9,421.40	0.00%	-3.97%	-10.17%	-21.58%
- Zinc (US\$ TM) (LME)	3,222.48	0.00%	-2.14%	-8.34%	18.07%
▲ Petróleo WTI (US\$ Barril) (NYM)	79.01	0.83%	-3.16%	-4.16%	65.71%
- Estante (US\$ TM) (LME)	39,200.00	0.00%	0.58%	0.87%	93.81%
- Plomo (US\$ TM) (LME)	2,248.00	0.00%	-6.20%	-6.35%	13.78%
▲ Azúcar #11 (US\$ Libra) (NYB-ICE)	20.18	-1.18%	0.30%	6.94%	41.42%
▲ Cacao (US\$ TM) (NYB-ICE)	2,589.00	0.82%	2.05%	-0.84%	3.98%
▼ Café Arábica (US\$ TM) (NYB-ICE)	229.15	-2.39%	7.43%	10.70%	68.18%

*Legend: Variación 1D: 1 Día; 5D: 5 Días; 1M: 1 Mes; YTD: Var.% 31/12/20 a la fecha

Principal Metals Index (3 months)



Base: 19/08/21=100

Source: Bloomberg

Equity

Germany (Stocks from DAX Index)

Largest gains	Curr.	Price	▲%	Exchange	Largest losses	Curr.	Price	▼%	Exchange
DAI GY	EUR	90.9	1.66	Xetra	MTX GY	EUR	186.8	-2.10	Xetra
IFX GY	EUR	43.46	1.07	Xetra	HEI GY	EUR	64.18	-1.72	Xetra
PLM GY	EUR	114.6	0.97	Xetra	DHER GY	EUR	126.7	-1.40	Xetra
HFG GY	EUR	91.08	0.82	Xetra	FRE GY	EUR	36.355	-1.21	Xetra

Europe (Stocks from STOXX EUROPE 600)

Largest gains	Curr.	Price	▲%	Exchange	Largest losses	Curr.	Price	▼%	Exchange
TKA GY	EUR	10.84	6.33	Xetra	ROR LN	GBP	345.2	-7.15	Londres
ALE PW	PLN	44.965	5.28	Warsaw	TMV GY	EUR	12.74	-6.19	Xetra
EVT GY	EUR	42.42	5.03	Xetra	KGH PW	PLN	141.45	-6.01	Warsaw
PSN LN	GBP	2819	4.80	Londres	BBVA SQ	EUR	5.435	-5.51	Soc.Bol SIBE

Global Overview:

United States:

Major US indices close the day with mixed results driven by an Apple-infused rally in tech stocks and consumer discretionary stocks. On the economic front, jobless claims fell more than expected, while the Fed's manufacturing index reached its highest level since March 1973. The DOW JONES index -0.17% closed with losses and with 19 of its 30 declining values affected by a decline in energy prices. Meanwhile, the S&P 500 closed with gains driven by the shares of the Non-Basic Consumer Products + 1.49%, Information Technology + 1.02% and Health 0.06% sectors. Shares such as Macy's + 21.17%, GAP + 4.38% and Bath & Body Works + 5.27% soared after presenting better than expected results for the third quarter. Lastly, the NASDAQ + 0.45% technology index closed higher, driven by a Bloomberg report suggesting that Apple + 2.85% suggested the iPhone maker was stepping up plans to develop its electric vehicle and get it on the road by 2025. Thus, DOW JONES -0.17%; S&P 500 + 0.34% and NASDAQ + 0.45% ended the day with mixed results.

Europe:

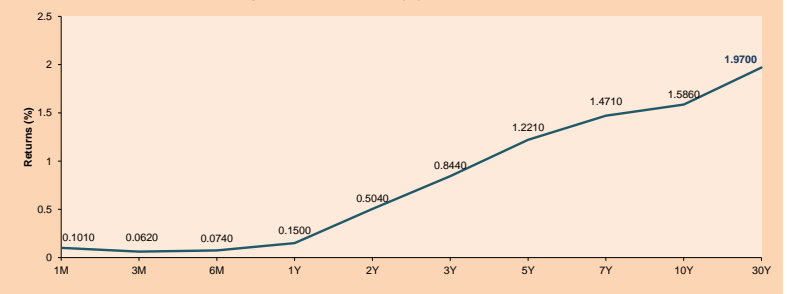
The main indexes of the European continent ended the session with negative returns, due to the weakness of the shares related to raw materials caused by the fall in the prices of oil and metals. In this way, the pan-European STOXX 600 index ended lower, being its first fall in 7 sessions, dropping its energy and mining sectors by approximately 2%. Likewise, the FTSE100 of the United Kingdom registered losses, after speculation of a possible Christmas lockdown generating uncertainty in investors and the fall in the price of oil in London reaching a minimum of 1 month. On the other hand, Germany's DAX recorded all-time highs at the beginning of the session, but ended up falling due to the rise in copper prices and concerns about the excess supply of crude oil and the prospect of China releasing its strategic fuel reserves. On the other hand, France's CAC40 closed with negative returns, due to disappointing US unemployment data and the increase in COVID-19 cases in the region. Finally, according to UBS analysts, the Eurozone is expected to have earnings growth of 60% for this year. Thus, FTSE 100 -0.48%; CAC 40 -0.21%; DAX -0.18%; STOXX 600 -0.46% ended the day with negative returns.

Asia:

The main Asian indices closed with mostly negative performances, due to the increase in global inflation, as well as the release of strategic oil reserves. The Chinese market closed with a negative performance, since Chinese authorities mentioned that the country will guide lithium battery manufacturers to improve technological innovation, which worried investors about probable rules regulating the sector. Meanwhile, the Hong Kong market closes lower after Evergrande commented that agents in Hong Kong will receive commissions owed to them by the company if they sell a larger number of properties, which caused a reduction in the performance of property sales companies. On the other hand, Japanese stocks had a negative variation, as there were losses in the Energy sector -4.23% due to a shift towards the use of renewable energy. In addition, South Korea's KOSPI fell as an increase in COVID-19 cases was reported, reaching 3300 cases on Thursday. However, Australian stocks finished higher, because of deals made by Australian companies and positive earnings reports, despite fears of rising inflation. Thus, NIKKEI -0.30%; HANG SENG -1.29%; CSI 300 -0.99%; S&P/ASX 200 +0.13%; KOSPI -0.51% ended with mixed performances.

ETFs	Curr.	Close	1D	5D	30 D	YTD	Exchange
SPDR S&P 500 ETF TRUST	USD	469.73	0.34%	1.29%	4.24%	25.64%	NYSE Arca
ISHARES MSCI EMERGING MARKET	USD	51.00	-1.22%	-1.66%	-2.86%	-1.30%	NYSE Arca
ISHARES IBOXX HIGH YLD CORP	USD	86.63	-0.08%	-0.22%	-0.70%	-0.77%	NYSE Arca
FINANCIAL SELECT SECTOR SPDR	USD	39.45	-0.50%	-1.52%	-1.15%	-33.82%	NYSE Arca
VANECK GOLD MINERS ETF	USD	34.24	-0.93%	-1.33%	6.35%	-4.94%	NYSE Arca
ISHARES RUSSELL 2000 ETF	USD	234.86	-0.42%	-1.84%	3.98%	19.79%	NYSE Arca
SPDR GOLD SHARES	USD	173.94	-0.32%	-0.10%	5.13%	-2.48%	NYSE Arca
ISHARES 20+ YEAR TREASURY BO	USD	146.81	0.38%	-0.79%	2.16%	-6.92%	NASDAQ GM
INVESCO QQQ TRUST SERIES 1	USD	401.75	1.04%	2.86%	7.00%	28.05%	NASDAQ GM
ISHARES BIOTECHNOLOGY ETF	USD	153.68	-0.27%	0.17%	-2.36%	1.45%	NASDAQ GM
ENERGY SELECT SECTOR SPDR	USD	56.89	-0.59%	-1.39%	-1.95%	50.11%	NYSE Arca
PROSHARES ULTRA VIX ST FUTUR	USD	15.63	1.56%	-3.04%	-10.02%	-85.32%	Cboe BZX
UNITED STATES OIL FUND LP	USD	55.55	1.00%	-1.19%	-3.26%	68.28%	NYSE Arca
ISHARES MSCI BRAZIL ETF	USD	29.15	-1.88%	-7.34%	-7.20%	-21.36%	NYSE Arca
SPDR S&P OIL & GAS EXP & PR	USD	103.96	0.21%	-3.44%	-2.49%	77.71%	NYSE Arca
UTILITIES SELECT SECTOR SPDR	USD	66.92	-0.52%	0.34%	1.59%	6.73%	NYSE Arca
ISHARES US REAL ESTATE ETF	USD	110.38	-0.05%	0.35%	2.53%	28.67%	NYSE Arca
SPDR S&P BIOTECH ETF	USD	122.22	-0.58%	-3.24%	-1.18%	-13.18%	NYSE Arca
ISHARES IBOXX INVESTMENT GRA	USD	132.58	0.23%	-0.41%	0.15%	-4.02%	NYSE Arca
ISHARES JIP MORGAN USD EMERGI	USD	109.44	0.28%	0.13%	-0.05%	-5.58%	NASDAQ GM
REAL ESTATE SELECT SECT SPDR	USD	48.47	-0.02%	0.62%	4.26%	32.58%	NYSE Arca
ISHARES CHINA LARGE-CAP ETF	USD	40.27	-2.16%	-4.37%	-4.37%	-13.27%	NYSE Arca
CONSUMER STAPLES SPDR	USD	72.31	-0.36%	-0.73%	2.68%	7.21%	NYSE Arca
VANECK JUNIOR GOLD MINERS	USD	46.95	-0.91%	-1.92%	8.13%	-13.44%	NYSE Arca
SPDR BLOOMBERG HIGH YIELD BO	USD	108.16	-0.11%	-0.35%	-0.71%	-0.72%	NYSE Arca
VANGUARD REAL ESTATE ETF	USD	110.07	0.02%	0.29%	3.16%	29.60%	NYSE Arca
GRAYSCALE BITCOIN TRUST BTC	USD	46.48	-3.93%	-10.94%	-4.79%	45.25%	OTC US

USA Treasury Bonds Yield Curve (%)



Source: Bloomberg

Capital Market Laboratory Coordinator: Economist Bruno Bellido
Collaboration: Alonso García, Ariam Loayza, Miguel Solimano y Jairo Valverde
email: pulsohorsatil@ulima.edu.pe
facebook: www.facebook.com/pulsohorsatil

LIMA

Stocks

Ticker	Currency	Price	1D*	5D*	30D*	YTD*	Frequency	Volume (US\$)	Beta	Dividend Yield (%)	Price Earning	Market Cap. (M US\$)	Economic Sector*	Index Weight
▲ ALICORC1 PE**	S/.	6.30	0.06%	-1.85%	-3.19%	-10.73%	100.00%	480,689	1.05	13.25	12.96	1,335.34	Industrial	3.53%
▲ ATACOBC1 PE**	S/.	0.14	0.00%	0.00%	0.00%	1.45%	84.21%	4,121	1.11	0.00	-	32.89	Mining	1.02%
▲ BACKUSI1 PE**	S/.	19.50	1.99%	-2.45%	2.63%	-3.23%	89.47%	50,080	0.72	4.79	7.29	6,261.36	Industrial	0.82%
▲ BAP PE**	US\$	120.90	0.58%	-5.43%	-9.10%	-24.72%	100.00%	58,135	1.21	1.01	-	11,410.82	Diverse	5.82%
▼ BVN PE**	US\$	6.94	-3.21%	-8.32%	-15.88%	-42.17%	100.00%	1,317,410	1.17	0.00	-	1,909.62	Mining	5.88%
▲ CASAGRC1 PE**	S/.	6.75	4.49%	8.00%	18.42%	42.11%	78.95%	173,137	1.29	14.60	4.65	141.39	Agricultural	1.31%
▼ BBVAC1 PE**	S/.	2.00	-1.96%	-0.99%	0.00%	-4.58%	89.47%	211,654	1.09	2.27	13.85	3,361.33	Finance	2.85%
▲ CORARE1 PE**	S/.	1.85	3.93%	12.12%	50.41%	107.87%	100.00%	121,387	1.17	14.90	2.82	552.36	Industrial	1.72%
▲ CPACASC1 PE**	S/.	5.39	0.19%	6.73%	12.29%	1.70%	94.74%	231,257	0.67	14.66	38.50	617.22	Industrial	2.38%
▲ CVERDEC1 PE**	US\$	26.20	4.38%	10.32%	26.57%	25.24%	100.00%	5,621,134	1.40	2.18	9.55	9,171.47	Mining	5.25%
- ENGEPEC1 PE**	S/.	2.32	0.00%	0.00%	16.00%	-2.11%	68.42%	28,243	0.70	0.00	10.10	1,382.07	Public Services	1.44%
- ENDISPC1**	S/.	4.28	0.00%	-5.31%	0.71%	-20.74%	68.42%	6,204	0.80	0.00	8.74	679.64	Public Services	0.98%
▼ FERREYCO1 PE**	S/.	1.91	-0.52%	-0.52%	1.06%	9.77%	100.00%	343,108	1.15	10.30	5.38	463.42	Diverse	4.90%
▲ AENZAC1 PE**	S/.	1.57	4.67%	-1.26%	0.00%	-9.77%	78.95%	5,226,255	1.00	0.00	-	340.42	Diverse	4.05%
▲ IFS PE**	US\$	24.60	1.65%	-3.53%	-5.93%	-20.49%	94.74%	12,089	1.23	3.13	5.99	2,840.01	Diverse	7.22%
- INRETC1 PE**	US\$	35.00	0.00%	-6.67%	-4.11%	-10.71%	84.21%	681,660	0.87	3.89	75.79	3,598.26	Diverse	5.28%
- LUSURC1 PE**	S/.	14.50	0.00%	0.00%	11.54%	-43.14%	73.68%	33,565	#N/A N/F	0.00	15.71	1,755.85	Public Services	1.81%
▲ MINSURI1 PE**	S/.	3.85	8.15%	22.61%	21.84%	108.11%	100.00%	9,842,822	0.99	8.68	2.96	2,760.19	Mining	3.09%
- PML PE**	US\$	0.14	0.00%	0.73%	-13.21%	30.19%	63.16%	4,278	1.24	0.00	-	36.48	Mining	2.12%
▼ SCCO PE**	US\$	59.30	-0.92%	-4.23%	-10.29%	-10.02%	89.47%	2,076	0.81	5.40	14.10	45,843.72	Mining	2.14%
▲ SIDERC1 PE**	S/.	1.66	3.75%	9.21%	31.75%	53.99%	100.00%	93,144	0.89	21.33	3.96	288.96	Industrial	1.43%
▼ TV PE**	US\$	0.15	-3.33%	-14.20%	-29.27%	-1.36%	84.21%	48,656	1.26	0.00	-	143.42	Mining	2.93%
▲ UNACEM1 PE**	S/.	1.82	1.68%	8.98%	13.04%	17.42%	100.00%	479,094	1.15	3.63	14.37	822.87	Industrial	3.00%
▼ VOLCABC1 PE**	S/.	0.62	-3.13%	-6.06%	-7.46%	19.23%	100.00%	535,165	1.70	0.00	-	1,688.68	Mining	5.90%
- NEXAPEC1 PE**	S/.	3.39	0.00%	-0.29%	-4.51%	19.79%	78.95%	30,082	1.16	0.00	-	1,069.89	Mining	1.56%

Quantity of shares: 25
Source: Bloomberg, Económica
* Bloomberg Industry Classification System
** PER is used in the stock market and original currency of the instrument
*Legend: Variation 1D: 1 Day; 5D: 5 Days, 1M: 1 Month; YTD: Var.% 12/31/20 to date

Up 12
Down 6
Hold 7

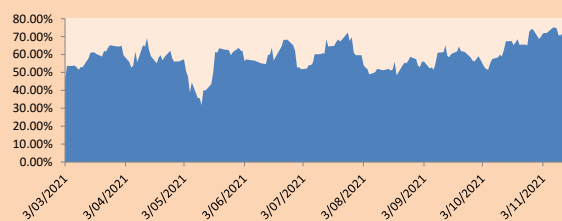
Sectorial Indices

	Close	1D*	5D*	30D*	YTD*	Beta
▼ S&P/BVLMining	386.98	-0.49%	-3.47%	-6.30%	-0.76%	0.77
▲ S&P/BVLConsumer	1,130.65	0.28%	-3.14%	-0.05%	3.86%	0.86
▲ S&P/BVLIndustrials	243.19	1.49%	5.35%	12.39%	27.62%	0.90
▲ S&P/BVLFinancials	886.32	0.92%	-5.00%	-6.82%	-14.27%	1.17
▲ S&P/BVLConstruction	268.11	2.22%	7.57%	16.95%	28.21%	0.79
- S&P/BVLPublicSvcs	584.69	0.00%	0.53%	5.69%	-4.79%	0.33
- S&P/BVLElectricUtil	570.80	0.00%	0.53%	5.69%	-4.79%	0.33

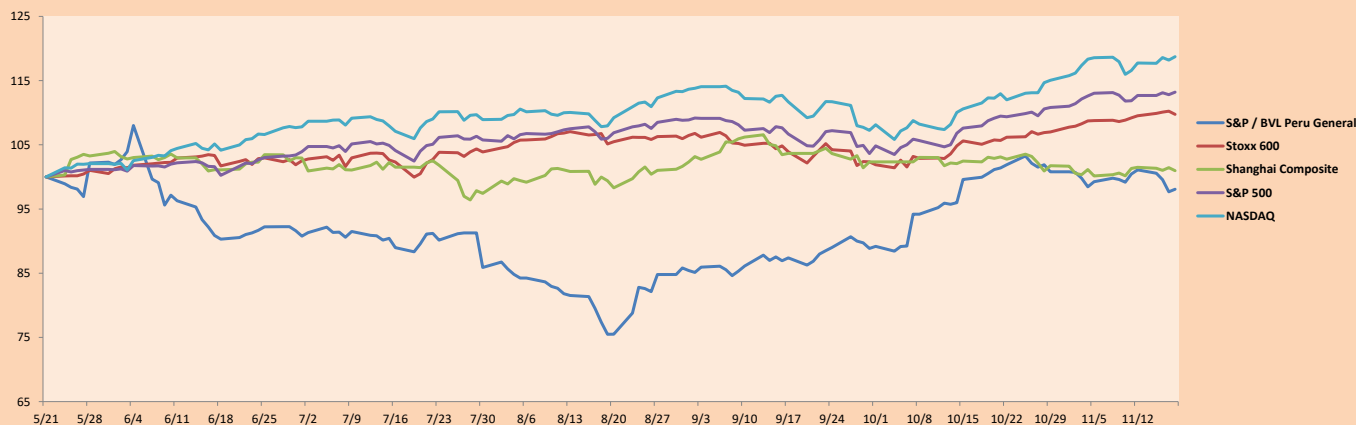
S&P/BVLConstructionTRPEN

*Legend: Variation 1D: 1 Day; 5D: 5 Days, 1M: 1 Month; YTD: Var.% 12/31/20 to date

Correlation Graph of Returns of Mining Index against Metallic Index of London (3 months)



Indices (6 months)



Base: 21/05/21=100
Source: Bloomberg

Capital Market Laboratory Coordinator: Economist Bruno Bellido
Collaboration: Alonso García, Ariam Loayza, Miguel Solimano y Jairo Valverde
email: pulsohorsatil@ulima.edu.pe
facebook: www.facebook.com/pulsohorsatil.ul

SOVEREIGN RATING

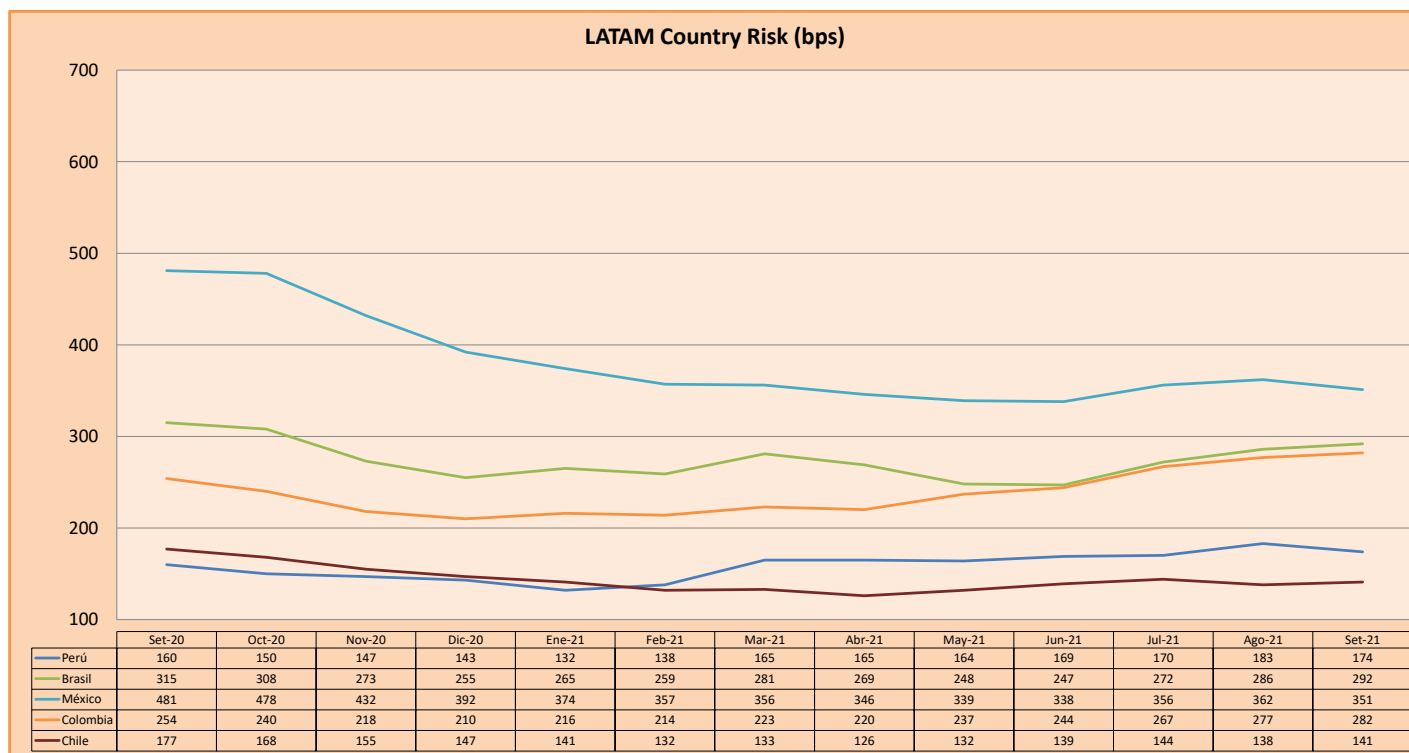
RISK RATINGS

Moody's	S&P	Fitch	
Aaa	AAA	AAA	Prime
Aa1	AA+	AA+	High credit quality
Aa2	AA	AA	
Aa3	AA-	AA-	
A1	A+	A+	Medium-high grade, with low credit risk
A2	A	A	
A3	A-	A-	
Baa1	BBB+	BBB+	Moderate Credit Risk
Baa2	BBB	BBB	
Baa3	BBB-	BBB-	
Ba1	BB+	BB+	It has speculative elements and it is subject to substantial credit risk
Ba2	BB	BB	
Ba3	BB-	BB-	
B1	B+	B+	It is considered speculative and it has high credit risk
B2	B	B	
B3	B-	B-	
Caa1	CCC+		Bad credit conditions and it is subject to high credit risk
Caa2	CCC		
Caa3	CCC-	CCC	
Ca	C		Very close to default or in default
		DDD	
C	D	DD D	

Source: Bloomberg

Latin America Credit Rating			
Clasificadora de riesgo			
Country	Moody's	Fitch	S&P
Peru	Baa1	BBB	BBB+
México	Ba2	BB-	BB-
Venezuela	C	WD	NR
Brazil	Ba2	BB-	BB-
Colombia	Baa2	BB+	BB+
Chile	A1	A-	A
Argentine	Ca	WD	CCC+
Panama	Baa2	BBB-	BBB

Source: Bloomberg



Source: BCRP

Capital Market Laboratory Coordinator: Economist Bruno Bellido
Collaboration: Alonso García, Ariam Loayza, Miguel Solimano y Jairo Valverde
email: pulsobursatil@ulima.edu.pe
facebook: www.facebook.com/pulsobursatil.ul