

PULSO BURSÁTIL

FACULTAD DE CIENCIAS EMPRESARIALES Y ECONÓMICAS
CARRERA DE ECONOMÍA
LABORATORIO DE MERCADO DE CAPITALES

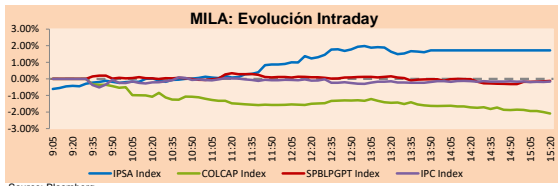


MILA

Lima, november 19, 2021

Main Indexes	Close	1 D	5 D	1 M	YTD	Cap. Burs. (US\$ bill)
▲ IPSA (Chile)	4,358.48	1.79%	-2.84%	6.71%	4.34%	97.88
▲ IGPA (Chile)	21,846.47	1.61%	-2.84%	6.94%	3.99%	116.69
▼ COLSC (Colombia)	936.76	-0.90%	-3.63%	-4.13%	-11.54%	4.32
▼ COLCAP (Colombia)	1,298.64	-2.91%	-4.92%	-7.22%	-9.68%	74.56
▼ S&P/BVL (Perú)*	20,125.28	-0.24%	-3.22%	-3.98%	-3.35%	92.74
▼ S&P/BVL SEL (Perú)	532.52	-0.51%	-3.00%	-3.91%	-3.43%	83.47
▼ S&P/BVL LIMA 25	28,689.33	-0.23%	-1.03%	-0.02%	13.85%	91.48
▼ IPC (México)	50,811.30	-0.04%	-1.73%	-2.08%	15.30%	306.16
▲ S&P MILA 40	446.21	0.32%	-5.53%	-3.78%	-16.54%	6,377.37

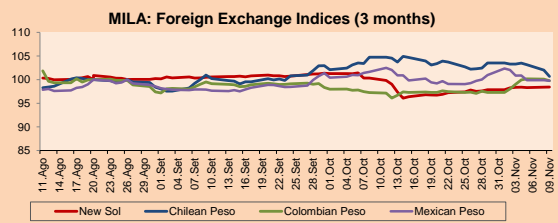
*Legend: Variation 1D: 1 day; 5D: 5 days; 1M: 1 Month; YTD: Var% 12/31/20 to date



Source: Bloomberg

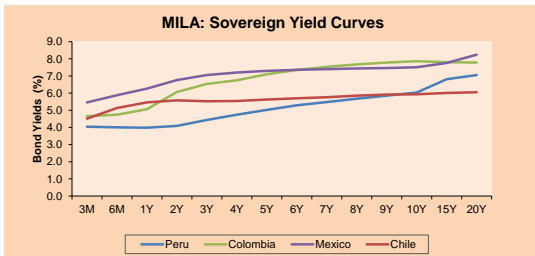
Currency	Price	1D*	5D*	30 D*	YTD*
▼ Sol (PEN)	4,0074	-0.35%	-0.28%	1.58%	10.76%
▼ Chilean Peso (CLP)	829.90	-0.29%	3.60%	2.03%	16.60%
▼ Colombian Peso (COP)	3,916.18	-0.23%	0.81%	3.94%	14.18%
▲ Mexican Peso (MXN)	20.83	0.25%	1.52%	3.11%	4.60%

*Legend: Variation 1D: 1 day; 5D: 5 days; 1M: 1 Month; YTD: Var% 12/31/20 to date



Base: 20/08/21=100
Source: Bloomberg

Fixed Income	Currency	Price	Bid Yield (%)	Ask Yield (%)	Duration
PERU 7.35 07/21/25	USD	120.229	1.69	1.58	3.24
PERU 4.125 08/25/27	USD	110.059	2.29	2.22	5.15
PERU 8.75 11/21/33	USD	155.451	3.19	3.13	8.50
PERU 6.55 03/14/37	USD	135.824	3.53	3.48	10.09
PERU 5.625 11/18/2050	USD	137.464	3.56	3.53	16.49
CHILE 2.25 10/30/22	USD	101.571	0.82	0.31	0.93
CHILE 3.125 01/21/26	USD	105.561	1.78	1.69	3.89
CHILE 3.625 10/30/42	USD	105.981	3.25	3.21	15.04
COLOM 11.85 03/09/28	USD	152.472	2.83	2.61	4.85
COLOM 10.375 01/28/33	USD	145.909	5.03	4.91	7.34
COLOM 7.375 09/18/37	USD	121.165	5.41	5.33	9.90
COLOM 6.125 01/18/41	USD	108.353	5.45	5.39	11.44
MEX 4 10/02/23	USD	108.353	5.451	5.385	11.44
MEX5.55 01/45	USD	119.968	4.22	4.17	13.80



Source: Bloomberg

Equity

Largest gains	Exchange	Currency	Price	▲ %
ENEL CHILE SA	Chile	CLP	33.36	7.93
ENEL AMERICAS SA	Chile	CLP	97.50	5.98
FALABELLA SA	Chile	CLP	2770.00	5.32
BANCO CRED INVER	Chile	CLP	28990.00	3.58
ANDINA-PREF B	Chile	CLP	1649.00	3.39

Per Turnover	Exchange	Amount (US\$)
FOMENTO ECON-UBD	Mexico	45,459,227
GRUPO F BANORT-O	Mexico	40,434,869
AMERICA MOVIL-L	Mexico	37,181,021
WALMART DE MEXIC	Mexico	23,412,872
SOQUIMICH-B	Chile	21,685,167

Largest losses	Exchange	Currency	Price	▼ %
GRUPO ENERGIA BO	Colombia	COP	2520	-7.01
GRUPO ARGOS SA	Colombia	COP	11020	-4.17
ECOPETROL	Colombia	COP	2645	-4.13
GRUPO BIMBO-A	Mexico	MXN	58.16	-3.82
BANCO DAVIVIENDA	Colombia	COP	29700	-3.76

Per Volume	Exchange	Volume
ITAU CORPBANCA	Chile	393,858,527
BANCO SANTANDER	Chile	207,399,537
BANCO DE CHILE	Chile	147,669,278
COLBUN SA	Chile	54,937,951
ENEL CHILE SA	Chile	51,182,388

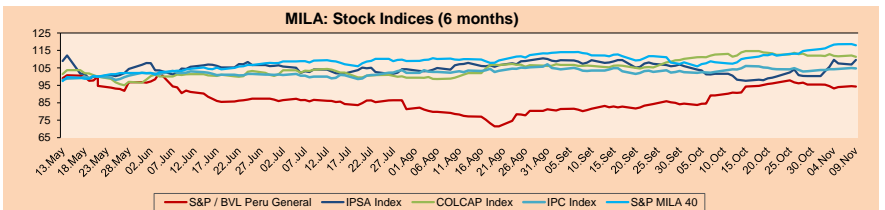
MILA

Peru: The General Index of the BVL ended today's session with a negative result of -0.24%. The index maintains an annual accumulated negative trend of -3.35% in local currency, while the adjusted return in dollars amounts to -12.74%. Then, the S&P / BVL Peru SEL varied by -0.51% while the S&P / BVL LIMA 25 by -0.23%. The PEN spot reached 5 / 4.0074. Headline: Government will negotiate withdrawal of four mining units in Ayacucho.

Chile: The IPSA index ended the day with a positive return of +1.79%. The most affected sectors of the day were Non-Basic Consumer Products (+5.05%) and Public Services (+4.70%). The stocks with the best performance were Enel Chile SA (+7.93%) and Enel Americas SA (+5.98%). Headline: Chilean stock market rises after five days in the red before the elections.

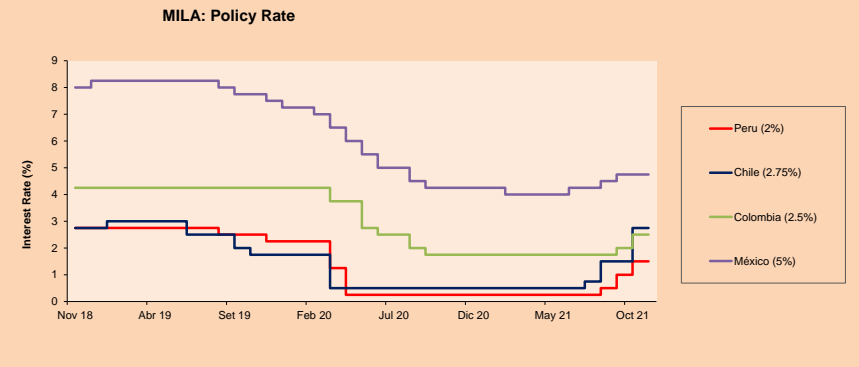
Colombia: The COLCAP index ended the day with a negative return of -2.91%. The most affected sectors of the day were Materials (-1.93%) and Finance (-1.76%). The worst performing stocks were Grupo Energía Bogota (-7.01%) and Mineros SA (-5.29%). Owner: Increased delinquency in all loans except the payroll.

Mexico: The IPC index closed the day with a negative return of -0.04%. The most affected sectors of the day were Non-Basic Consumer Products (-2.30%) and Health (-1.50%). The worst performing stocks were Alsea SAB de CV (-4.03%) and Grupo Bimbo (-3.82%). Headline: Can Mexico "forget about" investments? GM warns that they may stop coming.



Base: 13/05/21=100
Source: Bloomberg

ETFs	Curr.	Close	1D	5D	30 D	YTD	Exchange
▼ iShares MSCI All Peru Caped Index Fund	USD	29.4175	-0.62%	-2.94%	-3.39%	-15.17%	NYSE Arca
▲ iShares MSCI All Chile Caped Index Fund	USD	25.45	2.29%	-6.43%	4.78%	-15.76%	Cboe BZX
▼ Global X MSCI Colombia	USD	9.8993	-1.89%	-4.63%	-9.51%	-12.86%	NYSE Arca
▼ iShares MSCI Mexico Capped	USD	47.27	-0.57%	-3.10%	-5.61%	9.96%	NYSE Arca
▼ iShares MSCI Emerging Markets	USD	50.92	-0.16%	-2.08%	-2.99%	-1.45%	NYSE Arca
▼ Vanguard FTSE Emerging Markets	USD	51.06	-0.18%	-1.96%	-2.43%	1.90%	NYSE Arca
▼ iShares Core MSCI Emergina Markets	USD	62.54	-0.14%	-2.02%	-2.81%	0.81%	NYSE Arca
▼ iShares JP Morgan Emerging Markets Bonds	USD	63.84	-0.28%	-1.04%	-0.47%	4.52%	Cboe BZX
▼ Morgan Stanley Emerging Markets Domestic	USD	5.84	-0.34%	-0.85%	-1.85%	-7.15%	New York



Source: Bloomberg

Capital Market Laboratory Coordinator: Economist Bruno Bellido
Collaboration: Alonso García, Ariam Loayza, Miguel Solimano y Jairo Valverde
email: pulsobursatil@ulima.edu.pe
facebook: www.facebook.com/pulsobursatil

The content of this document is just for informational purposes. The information and opinions expressed should not be considered as recommendations for future decisions. Under any circumstances, the Capital Market Laboratory of University of Lima will be responsible for the use of the statements in this document.

LIMA

Stocks

Ticker	Currency	Price	1D*	5D*	30D*	YTD*	Frequency	Volume (US\$)	Beta	Dividend Yield (%)	Price Earning	Market Cap. (M US\$)	Economic Sector*	Index Weight
▼ ALICORC1 PE**	S/.	6.30	-0.90%	-3.63%	-4.13%	-11.54%	100.00%	16,990	1.04	13.25	12.96	1,339.98	Industrial	3.53%
▼ ATACOCB1 PE**	S/.	0.14	0.00%	0.00%	-10.83%	1.45%	89.47%	4,135	1.10	0.00	-	33.01	Mining	1.02%
▲ BACKKUS1 PE**	S/.	19.70	1.03%	1.03%	-1.50%	-2.23%	100.00%	8,093	0.72	4.75	7.36	6,311.50	Industrial	0.82%
▼ BAP PE**	US\$	120.29	-0.50%	-5.95%	-8.40%	-25.10%	100.00%	1,584,941	1.22	1.01	-	11,353.25	Diverse	5.82%
▼ BVN PE**	US\$	6.83	-1.59%	-13.32%	-20.30%	-43.08%	100.00%	1,234,818	1.16	0.00	-	1,879.35	Mining	5.88%
▼ CASAGRC1 PE**	S/.	6.70	-0.74%	3.40%	17.54%	41.05%	84.21%	46,329	1.29	14.71	4.61	140.83	Agricultural	1.31%
- BBVAC1 PE**	S/.	2.00	0.00%	-0.50%	-0.99%	-4.58%	94.74%	31,956	1.09	2.27	13.85	3,372.99	Finance	2.85%
- CORAREH1 PE**	S/.	1.85	0.00%	5.71%	45.67%	107.87%	100.00%	175,934	1.18	14.90	2.82	584.83	Industrial	1.72%
▲ CPACASC1 PE**	S/.	5.41	0.37%	6.71%	10.63%	2.08%	94.74%	32,924	0.67	14.60	38.64	621.47	Industrial	2.38%
- CVERDEC1 PE**	US\$	26.20	0.00%	6.50%	25.36%	25.24%	100.00%	1,420,598	1.41	2.18	9.55	9,171.47	Mining	5.25%
- ENGEPEC1 PE**	S/.	2.32	0.00%	0.00%	12.08%	-2.11%	100.00%	3,979	0.69	13.40	10.10	1,386.86	Public Services	1.44%
- ENDISPC1**	S/.	4.28	0.00%	-5.31%	0.71%	-20.74%	73.68%	12,893	0.80	7.72	8.74	682.00	Public Services	0.98%
- FERREYV1 PE**	S/.	1.91	0.00%	-0.52%	-1.04%	9.77%	100.00%	128,057	1.15	10.30	5.38	465.03	Diverse	4.90%
▼ AENZAC1 PE**	S/.	1.42	-9.55%	-10.69%	-11.25%	-18.39%	94.74%	800,776	0.98	0.00	-	308.96	Diverse	4.05%
▼ IFS PE**	US\$	24.30	-1.22%	-2.99%	-8.72%	-21.46%	94.74%	75,204	1.25	3.17	5.90	2,805.38	Diverse	7.22%
▲ INRETC1 PE**	US\$	35.50	1.43%	-6.33%	-1.96%	-9.44%	84.21%	4,162,844	0.87	3.84	76.65	3,649.66	Diverse	5.28%
- LUSURC1 PE**	S/.	14.50	0.00%	0.00%	8.21%	-43.14%	84.21%	51,737	#N/A #N/A	7.17	15.71	1,781.94	Public Services	1.81%
- MINSUR1 PE**	S/.	3.85	0.00%	21.07%	20.31%	108.11%	100.00%	514,548	0.96	8.68	2.97	2,769.77	Mining	3.09%
▲ PML PE**	US\$	0.14	1.45%	2.19%	-12.50%	32.08%	84.21%	4,200	1.23	0.00	-	37.01	Mining	2.12%
▲ SCCO PE**	US\$	60.26	1.62%	-2.54%	-8.35%	-8.56%	94.74%	21,091	0.78	5.31	14.33	46,585.88	Mining	2.14%
▲ SIDERC1 PE**	S/.	1.69	1.81%	9.03%	31.01%	56.77%	100.00%	36,154	0.87	20.95	4.03	295.20	Industrial	1.43%
▲ TV PE**	US\$	0.15	3.45%	-6.25%	-25.00%	2.04%	84.21%	62,579	1.26	0.00	-	148.36	Mining	2.93%
▼ UNACEMC1 PE**	S/.	1.80	-1.10%	7.14%	11.11%	16.13%	100.00%	37,741	1.16	3.67	14.21	816.65	Industrial	3.00%
▼ VOLCABC1 PE**	S/.	0.64	3.23%	-4.48%	-4.48%	23.08%	100.00%	192,073	1.70	0.00	-	1,706.73	Mining	5.90%
- NEXAPEC1 PE**	S/.	3.39	0.00%	-1.45%	-7.12%	19.79%	78.95%	30,186	1.16	0.00	-	1,073.60	Mining	1.56%

Quantity of shares: 25
 Source: Bloomberg, Económática
 * Bloomberg Industry Classification System
 ** PER is used in the stock market and original currency of the instrument
 *Legend: Variation 1D: 1 Day; 5D: 5 Days, 1M: 1 Month; YTD: Var.% 12/31/20 to date

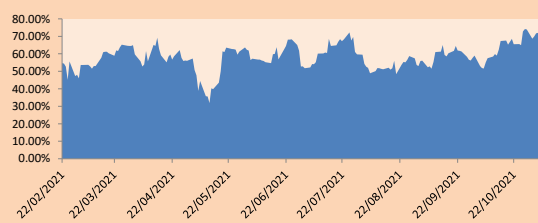
Sectorial Indices

	Close	1D*	5D*	30D*	YTD*	Beta
▲ S&P/BVLMining	389.53	0.66%	-3.68%	-6.17%	-0.11%	0.75
▲ S&P/BVLConsumer	1,138.21	0.67%	-2.74%	0.28%	4.56%	0.87
▼ S&P/BVLIndustrials	241.90	-0.53%	4.28%	10.06%	26.94%	0.91
▼ S&P/BVLFinancials	879.04	-0.82%	-5.59%	-6.72%	-14.98%	1.15
▼ S&P/BVLConstruction	266.20	-0.71%	6.07%	14.57%	27.30%	0.81
- S&P/BVLPublicSvcs	584.69	0.00%	-0.23%	4.36%	-4.79%	0.34
- S&P/BVLElectricUtil	570.80	0.00%	-0.23%	4.36%	-4.79%	0.34

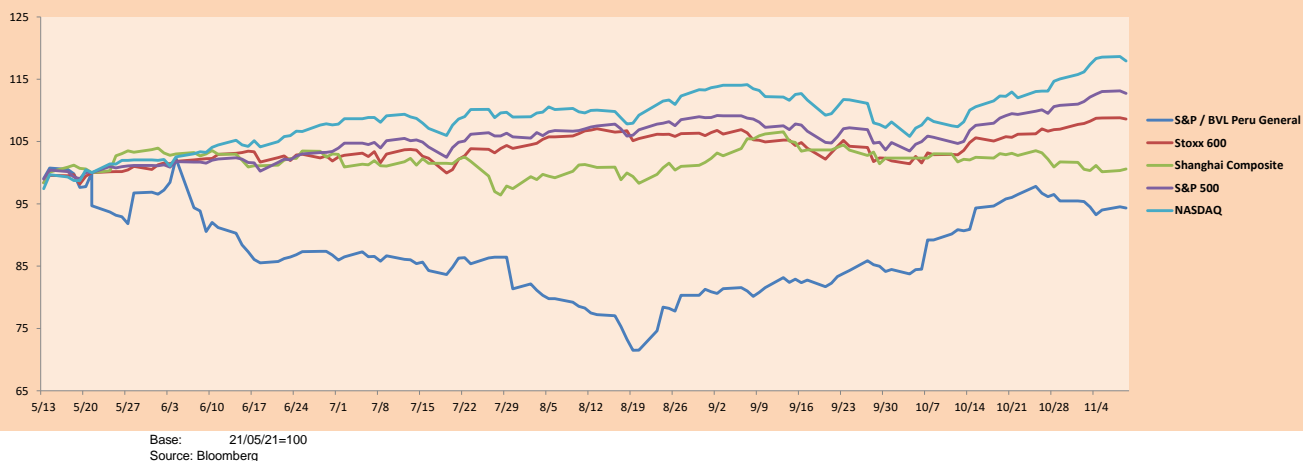
S&P/BVLConstructionTRPEN

*Legend: Variation 1D: 1 Day; 5D: 5 Days, 1M: 1 Month; YTD: Var.% 12/31/20 to date

Correlation Graph of Returns of Mining Index against Metallic Index of London (3 months)



Indices (6 months)



Base: 21/05/21=100
Source: Bloomberg

Capital Market Laboratory Coordinator: Economist Bruno Bellido
 Collaboration: Alonso García, Ariam Loayza, Miguel Solimano y Jairo Valverde
 email: pulsobursatil@ulima.edu.pe
 facebook: www.facebook.com/pulsobursatil.ul

The content of this document is just for informational purposes. The information and opinions expressed should not be considered as recommendations for future decisions. Under any circumstances, the Capital Market Laboratory of University of Lima will be responsible for the use of the statements in this document.

SOVEREIGN RATING

RISK RATINGS

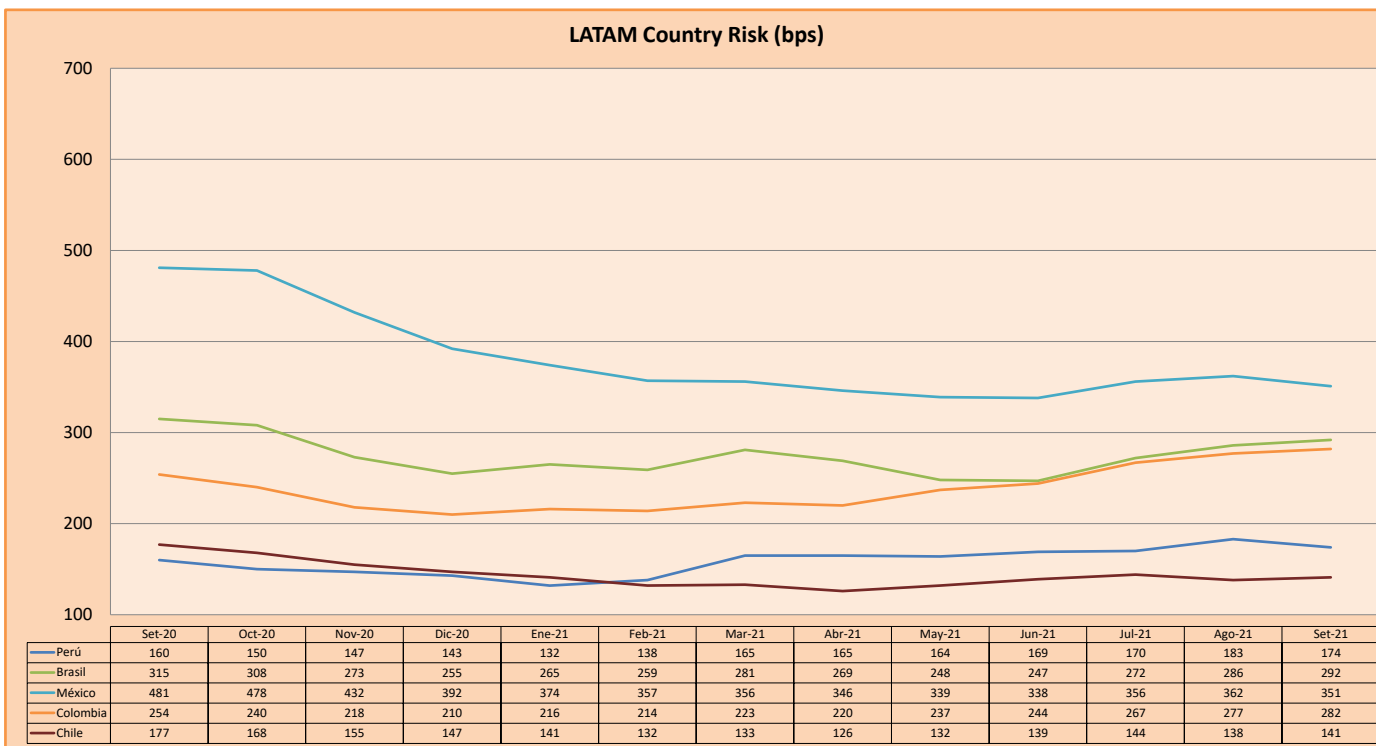
Moody's	S&P	Fitch		
Aaa	AAA	AAA	Prime	
Aa1	AA+	AA+	High credit quality	
Aa2	AA	AA		
Aa3	AA-	AA-		
A1	A+	A+	Medium-high grade, with low credit risk	
A2	A	A		
A3	A-	A-		
Baa1	BBB+	BBB+	Moderate Credit Risk	
Baa2	BBB	BBB		
Baa3	BBB-	BBB-		
Ba1	BB+	BB+	It has speculative elements and it is subject to substantial credit risk	
Ba2	BB	BB		
Ba3	BB-	BB-		
B1	B+	B+	It is considered speculative and it has high credit risk	
B2	B	B		
B3	B-	B-		
Caa1	CCC+	CCC	Bad credit conditions and it is subject to high credit risk	
Caa2	CCC			
Caa3	CCC-			
Ca	C	DDD	Very close to default or in default	
C	D			DD
				D

Source: Bloomberg

Latin America Credit Rating			
Clasificadora de riesgo			
Country	Moody's	Fitch	S&P
Peru	Baa1	BBB	BBB+
México	Ba2	BB-	BB-
Venezuela	C	WD	NR
Brazil	Ba2	BB-	BB-
Colombia	Baa2	BB+	BB+
Chile	A1	A-	A
Argentine	Ca	WD	CCC+
Panama	Baa2	BBB-	BBB

Source: Bloomberg

LATAM Country Risk (bps)



Source: BCRP

Capital Market Laboratory Coordinator: Economist Bruno Bellido
Collaboration: Alonso García, Ariam Loayza, Miguel Solimano y Jairo Valverde
email: pulsohorsatil@ulima.edu.pe
facebook: www.facebook.com/pulsohorsatil.ul