

PULSO BURSÁTIL

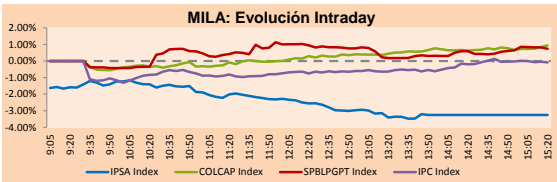
FACULTAD DE CIENCIAS EMPRESARIALES Y ECONÓMICAS
CARRERA DE ECONOMÍA
LABORATORIO DE MERCADO DE CAPITALES



MILA

Main Indexes	Close	1 D	5 D	1 M	YTD	Cap. Burs. (US\$ bill)
▼ IPSA (Chile)	4,432.71	-1.62%	-5.64%	8.32%	6.12%	101.48
▼ IGPA (Chile)	22,207.39	-1.69%	-5.48%	8.01%	5.71%	120.91
▼ COLSC (Colombia)	902.76	-2.34%	-2.87%	-7.91%	-14.75%	4.23
▲ COLCAP (Colombia)	1,373.84	1.96%	4.36%	-1.45%	-4.45%	74.99
▲ S&P/BVL (Perú)*	20,416.43	0.83%	2.15%	-1.55%	-1.95%	91.87
▲ S&P/BVL SEL (Perú)	544.74	1.20%	2.74%	-1.29%	-1.21%	83.35
▲ S&P/BVL LIMA 25	28,915.99	1.33%	1.77%	0.42%	14.75%	90.66
▼ IPC (México)	49,698.72	-0.20%	-2.77%	-3.14%	12.78%	289.92
▲ S&P MILA 40	454.25	1.05%	-2.64%	-0.94%	-15.03%	6,219.24

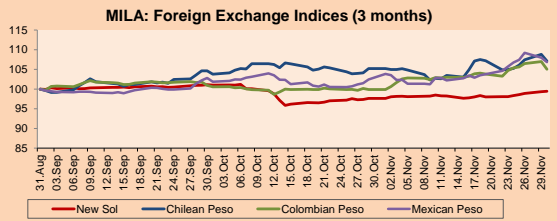
*Legend: Variation 1D: 1 day; 5D: 5 days; 1M: 1 Month; YTD: Var% 12/31/20 to date



Source: Bloomberg

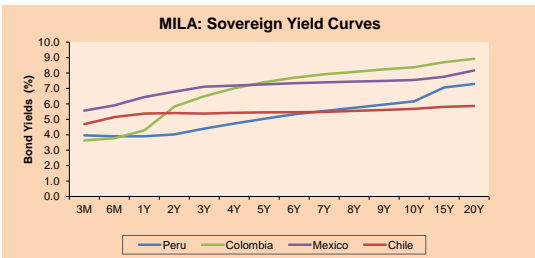
Currency	Price	1D*	5D*	30 D*	YTD*
▲ Sol (PEN)	4,065.4	0.11%	1.38%	1.82%	12.37%
▲ Chilean Peso (CLP)	829.25	-1.57%	2.05%	1.81%	16.50%
▼ Colombian Peso (COP)	3,962.76	-1.80%	0.33%	5.19%	15.54%
▼ Mexican Peso (MXN)	21.45	-1.04%	1.07%	4.32%	7.72%

*Legend: Variation 1D: 1 day; 5D: 5 days; 1M: 1 Month; YTD: Var% 12/31/20 to date



Base: 31/08/21=100
Source: Bloomberg

Fixed Income	Currency	Price	Bid Yield (%)	Ask Yield (%)	Duration
PERU 7.35 07/21/25	USD	119.745	1.78	1.67	3.21
PERU 4.125 08/25/27	USD	109.744	2.34	2.26	5.12
PERU 8.75 11/21/33	USD	154.426	3.27	3.19	8.45
PERU 6.55 03/14/37	USD	134.34	3.64	3.58	10.01
PERU 5.625 11/18/2050	USD	136.196	3.62	3.59	16.34
CHILE 2.25 10/30/22	USD	101.496	0.82	0.38	0.90
CHILE 3.125 01/21/26	USD	105.621	1.77	1.65	3.87
CHILE 3.625 10/30/42	USD	106.542	3.22	3.17	15.00
COLOM 11.85 03/09/28	USD	150.221	3.14	2.87	4.80
COLOM 10.375 01/28/33	USD	142.727	5.33	5.19	7.27
COLOM 7.375 09/18/37	USD	117.038	5.75	5.70	9.74
COLOM 6.125 01/18/41	USD	104.219	5.79	5.73	11.22
MEX 4 10/02/23	USD	104.219	5.788	5.727	11.22
MEX5.55 01/45	USD	118.449	4.30	4.27	13.70



Source: Bloomberg

Lima, november 30, 2021

Equity

Largest gains	Exchange	Currency	Price	▲ %
ALFA SAB-A	Chile	CLP	100.00	17.05
CONCHATORO	Chile	CLP	1485.00	15.56
GRUPO BIMBO-A	Mexico	MXN	56.22	6.46
ISA SA	Colombia	COP	22300.00	6.19
GRUPO CARSO-A1	Mexico	MXN	62.37	6.02

Largest losses	Exchange	Currency	Price	▼ %
SONDA SA	Chile	CLP	266.75	-8.96
EMPRESAS COPEC	Chile	CLP	6103	-5.38
FALABELLA SA	Chile	CLP	2560	-5.19
ITAU CORPBANCA	Chile	CLP	1.705	-4.75
CMPC	Chile	CLP	1340	-4.65

Per Turnover

ALFA SAB-A	Exchange	Amount (US\$)
AMERICA MOVIL-L	Mexico	266,586,734
WALMART DE MEXIC	Mexico	129,010,783
GRUPO F BANORT-O	Mexico	112,207,372
GRUPO MEXICO-B	Mexico	101,847,627
		72,678,020

Per Volume

ITAU CORPBANCA	Exchange	Volume
COLBUN SA	Chile	2,714,372,324
BANCO SANTANDER	Chile	646,955,194
BANCO DE CHILE	Chile	406,373,904
		372,858,017
ALFA SAB-A	Mexico	372,433,087

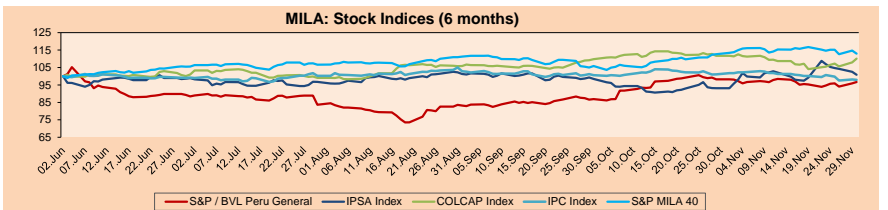
MILA

Peru: The General Index ended today's session with a positive result of +0.83%. The index maintains a annual cumulative negative trend of -1.95% in local currency, while the adjusted return in dollars amounted to -12.74%. Then, the S&P / BVL Peru SEL changed by +1.20% while the S&P / BVL LIMA 25 by +1.33%. The PEN spot reached 5/. 4.0654. Headline: Foreign direct investment grew due to higher reinvestment of profits

Chile: The IPSA index ended the day with a negative return of -1.62%. The sectors that lost the most from the session were Information technology (-8.96%) and Non basic consumer products (-5.48%). The worst performing stocks were Ripley Corp SA (-9.05%) and Sonda SA (-8.96%). Headline: IPSA falls for the sixth consecutive session, but closes November with its best performance in a year

Colombia: The COLCAP index closed today with a positive return of +1.96%. The sectors that benefited the most from the session were Financials (+3.63%) and Utilities (+1.72%). The stocks with the best performance were Bancolombia SA (+6.48%) and Interconexion Eléctrica SA (+6.19%). Headline: Unemployment rate in Colombia was 11.8% in October

Mexico: The IPC index closed the day with a negative return of -0.20%. The sectors that lost the most of the day were Non-basic consumer products (-2.43%) and Staples (-1.06%). The worst performing stocks were Aelse SAB de CV (-4.87%) and Alfa SAB (-4.07%). Headline: Tax revenues grow 1.6% from January to October.

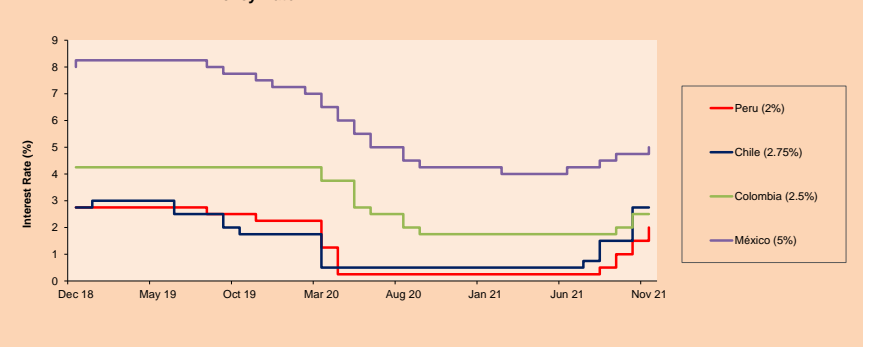


Base: 03/06/21=100
Source: Bloomberg

ETFs

	Curr.	Close	1D	5D	30 D	YTD	Exchange
▲ iShares MSCI All Peru Caped Index Fund	USD	28.64	1.17%	-0.73%	-4.60%	-17.42%	NYSE Arca
▼ iShares MSCI All Chile Caped Index Fund	USD	25.3	-1.98%	-9.25%	3.14%	-16.25%	Cboe BZX
▲ Global X MSCI Colombia	USD	9.9673	2.16%	-0.48%	-8.77%	-12.26%	NYSE Arca
▲ iShares MSCI Mexico Capped	USD	45.31	1.43%	-2.87%	-6.23%	5.40%	NYSE Arca
▼ iShares MSCI Emerging Markets	USD	48.84	-0.10%	-3.21%	-4.08%	-5.48%	NYSE Arca
▲ Vanguard FTSE Emerging Markets	USD	49.19	0.16%	-2.75%	-2.90%	-1.84%	NYSE Arca
▲ iShares Core MSCI Emerging Markets	USD	60.12	0.03%	-3.02%	-3.70%	-3.09%	NYSE Arca
▲ iShares JP Morgan Emerging Markets Bonds	USD	61.99	0.05%	-2.16%	-1.56%	1.49%	Cboe BZX
▼ Morgan Stanley Emerainq Markets Domestic	USD	5.57	-2.28%	-2.79%	-3.47%	-11.45%	New York

MILA: Policy Rate



Source: Bloomberg

Capital Market Laboratory Coordinator: Economist Bruno Bellido
Collaboration: Alonso García, Ariam Loayza, Miguel Solimano y Jairo Valverde
email: pulsobursatil@ulima.edu.pe
facebook: www.facebook.com/pulsobursatil.u

The content of this document is just for informational purposes. The information and opinions expressed should not be considered as recommendations for future decisions. Under any circumstances, the Capital Market Laboratory of University of Lima will be responsible for the use of the statements in this document.

WORLD

Main Indices	Close	1 D*	5 D*	1 M*	YTD*	Market Cap. (US\$ Mill.)
▼ Dow Jones (USA)	34,483.72	-1.86%	-3.19%	-3.73%	12.67%	11,314,151
▼ Standard & Poor's 500 (EEUU)	4,567.00	-1.90%	-2.48%	-0.83%	21.59%	41,107,659
▼ NASDAQ Composite (USA)	15,537.69	-1.55%	-2.00%	0.25%	20.56%	26,832,664
▼ Stoxx EUROPE 600 (Europe)	462.96	-0.92%	-3.40%	-3.32%	16.02%	11,368,678
▼ DAX (Germany)	15,100.13	-1.18%	-5.25%	-4.47%	10.07%	1,437,326
▼ FTSE 100 (United Kingdom)	7,059.45	-0.71%	-2.85%	-3.14%	9.27%	1,527,323
▼ CAC 40 (France)	6,721.16	-0.81%	-4.59%	-2.50%	21.07%	1,979,924
▼ IBEX 35 (Spain)	8,305.10	-1.78%	-5.79%	-9.56%	2.87%	491,134
▼ MSCI AC Asia Pacific Index	189.78	-0.91%	-4.00%	-3.77%	-5.07%	25,247,978
▼ HANG SENG (Hong Kong)	23,475.26	-1.58%	-4.77%	-6.68%	-13.79%	3,623,369
▲ SHANGHAI SE Comp. (China)	3,563.89	0.03%	-0.70%	0.55%	2.61%	7,327,941
▼ NIKKEI 225 (Japan)	27,821.76	-1.63%	-6.56%	-6.16%	1.36%	4,022,881
▲ S&P / ASX 200 (Australia)	7,255.97	0.22%	-2.09%	-1.81%	9.87%	1,659,804
▼ KOSPI (South Korea)	2,839.01	-0.20%	-2.77%	-4.70%	-1.20%	1,700,427

*Legend: Variation 1D: 1 Day; 5D: 5 Days; 1M: 1 Month; YTD: Var. % 12/31/20 to date

Equity

Germany (Stocks from DAX Index)				Largest gains				Largest losses							
ADSGY	Curr.	Price	▲%	ADSGY	Curr.	Price	▲%	ADSGY	Curr.	Price	▼%	ADSGY	Curr.	Price	▼%
ADSGY	EUR	255.55	0.49	ADSGY	EUR	15.588	-2.82	ADSGY	EUR	23.44	-2.70	ADSGY	EUR	52.17	-2.63
PUMGY	EUR	106.75	0.38	ENRNGY	EUR	106.75	0.38	DPIVGY	EUR	138.6	-2.53	ENRNGY	EUR	138.6	-2.53
DAIGY	EUR	83	0.24	ALVGY	EUR	192.44	0.19	ALVGY	EUR	192.44	0.19	ALVGY	EUR	192.44	0.19

Global Overview:

United States:

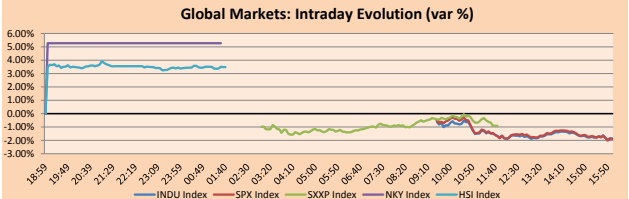
Major US indices closed the day lower after the Fed chairman signaled a more aggressive approach to curtail bond purchases at a time when concerns about the new Omicron variant. Powell's updated shock risk sentiment when it came amid uncertainty about the impact of the Omicron variant of the coronavirus on the economy. Energy continued to track oil prices, as new concerns about the impact of the new Covid variant on travel demand are likely to force OPEC and its allies to delay plans to increase production at their meeting on Thursday. The DOW JONES -1.86% closed with negative returns and with 28 of its 30 values lower. The most affected sectors were Materials -3.39%, Basic Products -2.51% and Finance -2.21%. Meanwhile, the S&P 500 index closed with losses driven by the Communication Services -3.00%, Public Services -2.92% and Basic Products -2.73% sectors. Lastly, the -2.31% NASDAQ technology index plummeted after widespread fear over Powell's speech and a surge in sovereign bond yields. Thus, DOW JONES -1.86%; S&P 500 -1.90%; NASDAQ -2.31% ended the day with negative returns.

Europe:

Major European indices ended the session with negative returns as further comments from U.S. Federal Reserve Chairman Jerome Powell and fears around the Omicron variant of COVID-19 weighed on investor sentiment. The pan-European STOXX 600 index ended with losses after Moderna said existing vaccines will be less effective in combating Omicron than previous strains and warned that it will be months before pharmaceuticals can manufacture new variant-specific vaccines on a large scale. The British market, reflected in the FTSE 100, closed lower as, during his testimony before the Senate Banking Committee, Powell said that the Fed would use its tools to cool prices, and may consider reducing bond purchases sooner than decided. Meanwhile, the DAX index closed in negative territory on the rise of COVID-19 cases and its new variant, which could slow progress in employment and economic growth, as well as add further "uncertainty" about inflation. The French market ended lower as France's final Q3 gross domestic product growth was confirmed at 3% quarter-on-quarter, while inflation rose to an annual rate of 3.4% in November, the highest since September 2008. Thus, FTSE 100 -0.71%; CAC 40 -0.81%; DAX -1.18%; STOXX 600 -0.92% ended at negative levels.

Asia:

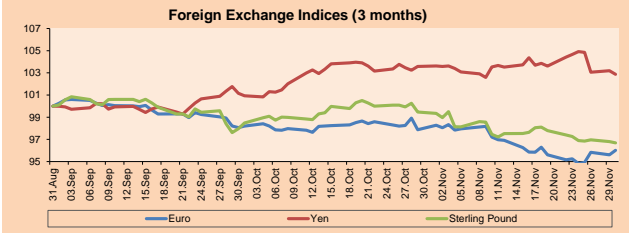
The main Asian indices closed mostly lower, caused by strong concerns regarding the new variant of the coronavirus "Omicron" after the pharmaceutical giant Moderna emphasized to be alert against this new strain. In this way, China's shares ended down, due to the current situation of the pandemic and the weak data in the services sector, which grew at a slower pace caused by the coronavirus outbreaks in the region. Likewise, the Hong Kong index closed at a low of more than a year, dragged down by regulatory concerns affecting the technology sector and the alarm of the Omicron variant by Moderna. On the other hand, Japanese stocks ended lower, after it was said in the Financial Times that existing COVID-19 vaccines would likely be less effective in fighting the new strain. On the other hand, the KOSPI index of South Korea registered losses reaching an 11-month low, caused by the sell-off of shares prompted by warnings from the CEO of Moderna Inc. Finally, Australian stocks close higher, thanks to the recovery of the travel sector as hopes that the variant will not be as dangerous as feared had a positive impact on investors. Thus, NIKKEI -1.63%; HANG SENG -1.58%; CSI 300 -0.40%; S & P / ASX 200 +0.22%; KOSPI -2.42% ended up with mixed returns.



Source: Bloomberg

Currency	Price	1 D*	5 D*	1 M*	YTD*
▲ Euro	1.1338	0.42%	0.80%	-1.90%	-7.19%
▼ Yen	113.1700	-0.32%	-1.71%	-0.68%	9.61%
▼ Sterling Pound	1.3299	-0.12%	-0.59%	-2.80%	-2.71%
▼ Yuan	6.3644	-0.37%	-0.43%	-0.64%	-2.49%
▼ Hong Kong Dollar	7.7974	-0.03%	0.04%	0.24%	0.57%
▲ Brazilian Real	5.6237	0.28%	0.59%	-0.23%	8.18%
▲ Argentinian Peso	100.9388	0.01%	0.36%	1.22%	19.96%

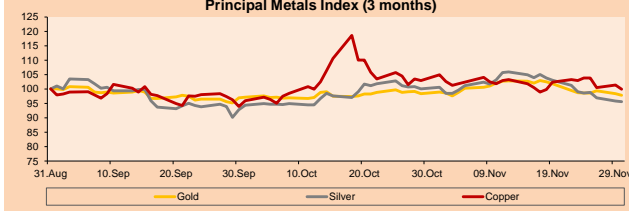
*Legend: Variation 1D: 1 Day; 5D: 5 Days; 1M: 1 Month; YTD: Var. % 12/31/20 to date



Base: 31/08/21=100
Source: Bloomberg

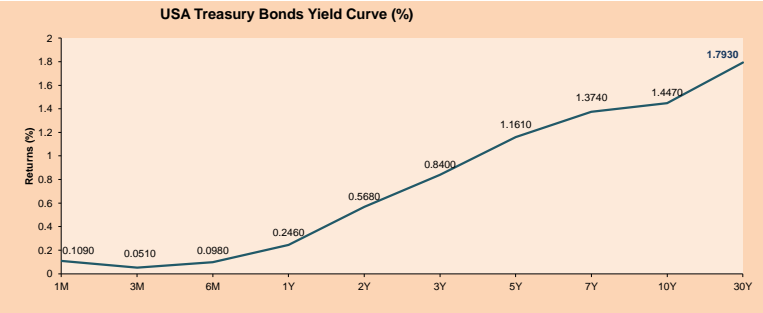
Commodities	Close	1 D*	5 D*	1 M*	YTD*
▼ Oro (US\$ Oz. T) (LME)	1,774.52	-0.56%	-0.82%	-0.50%	-6.52%
▼ Plata (US\$ Oz. T) (LME)	22.84	-0.30%	-3.48%	-4.47%	-13.51%
▼ Cobre (US\$ TM) (LME)	9,515.50	-1.52%	-2.95%	-2.99%	22.80%
▼ Zinc (US\$ TM) (LME)	3,288.75	-0.42%	-2.56%	-4.60%	20.50%
▼ Petróleo WTI (US\$ Barril) (NYM)	66.18	-5.39%	-15.69%	-19.08%	39.36%
▼ Estano (US\$ TM) (LME)	39,905.00	-0.31%	-0.20%	2.22%	94.24%
▲ Plomo (US\$ TM) (LME)	2,318.25	0.42%	2.15%	-4.16%	17.34%
▲ Azúcar #11 (US\$ Libra) (NYB-ICE)	18.60	-3.07%	-7.51%	-3.48%	30.34%
▼ Cacao (US\$ TM) (NYB-ICE)	2,346.00	-1.35%	-8.84%	-9.07%	-5.78%
▼ Café Arábica (US\$ TM) (NYB-ICE)	232.30	-0.30%	-4.03%	12.41%	70.50%

*Legend: Variación 1D: 1 Día; 5D: 5 Días; 1M: 1 Mes; YTD: Var. % 31/12/20 a la fecha



Base: 31/08/21=100
Source: Bloomberg

ETFs	Curr.	Close	1D	5D	30 D	YTD	Exchange
SPDR S&P 500 ETF TRUST	USD	455.56	-1.95%	-2.70%	-0.80%	21.85%	NYSE Arca
ISHARES MSCI EMERGING MARKET	USD	48.84	-0.10%	-3.21%	-4.08%	-5.48%	NYSE Arca
ISHARES IBOX HIGH YLD CORP	USD	85.64	-0.42%	-0.55%	-1.48%	-1.90%	NYSE Arca
FINANCIAL SELECT SECTOR SPDR	USD	37.96	-2.39%	-5.55%	-5.71%	28.77%	NYSE Arca
VANECK GOLD MINERS ETF	USD	31.80	-1.03%	-2.15%	0.28%	-11.72%	NYSE Arca
ISHARES RUSSELL 2000 ETF	USD	218.17	-2.04%	-5.69%	-4.33%	11.28%	NYSE Arca
SPDR GOLD SHARES	USD	165.50	-0.67%	-1.06%	-0.69%	-7.21%	NYSE Arca
ISHARES 20+ YEAR TREASURY BO	USD	151.59	1.52%	4.91%	2.64%	-3.89%	NASDAQ GM
INVESTCO QQQ TRUST SERIES 1	USD	393.82	-1.47%	-0.92%	2.00%	25.52%	NASDAQ GM
ISHARES BIOTECHNOLOGY ETF	USD	154.22	-1.18%	0.79%	-3.37%	1.80%	NASDAQ GM
ENERGY SELECT SECTOR SPDR	USD	54.59	-2.34%	-4.81%	-5.01%	44.04%	NYSE Arca
PROSHARES ULTRA VIX ST FUTUR	USD	20.52	21.85%	30.20%	24.82%	-80.73%	Cboe BZX
UNITED STATES OIL FUND LP	USD	47.91	-4.50%	-14.75%	-16.17%	45.14%	NYSE Arca
ISHARES MSCI BRAZIL ETF	USD	28.99	-1.19%	-1.83%	-1.13%	-21.80%	NYSE Arca
SPDR S&P OIL & GAS EXP & PR	USD	97.39	-2.64%	-6.69%	-8.43%	66.48%	NYSE Arca
UTILITIES SELECT SECTOR SPDR	USD	65.77	-2.92%	-2.97%	-1.70%	4.90%	NYSE Arca
ISHARES US REAL ESTATE ETF	USD	107.19	-2.03%	-2.57%	-2.41%	25.15%	NYSE Arca
SPDR S&P BIOTECH ETF	USD	116.27	1.06%	-2.61%	-6.84%	-17.41%	NYSE Arca
ISHARES IBOX INVESTMENT GRA	USD	133.06	0.22%	1.59%	-0.31%	-3.67%	NYSE Arca
ISHARES JP MORGAN USD EMERGI	USD	107.47	-0.02%	-0.12%	-2.20%	-7.28%	NASDAQ GM
REAL ESTATE SELECT SECT SPDR	USD	47.39	-2.09%	-2.25%	-0.90%	29.62%	NYSE Arca
ISHARES CHINA LARGE-CAP ETF	USD	38.19	-0.55%	-4.00%	-5.31%	-17.75%	NYSE Arca
CONSUMER STAPLES SPDR	USD	70.29	-2.56%	-3.84%	-1.35%	4.21%	NYSE Arca
VANECK JUNIOR GOLD MINERS	USD	42.69	-0.93%	-2.93%	-1.34%	-21.29%	NYSE Arca
SPDR BLOOMBERG HIGH YIELD BO	USD	106.83	-0.45%	-0.65%	-1.65%	-1.94%	NYSE Arca
VANGUARD REAL ESTATE ETF	USD	106.74	-1.89%	-2.75%	-2.11%	25.68%	NYSE Arca
GRAYSCALE BITCOIN TRUST BTC	USD	46.22	-2.03%	-1.41%	-6.98%	44.44%	OTC US



Source: Bloomberg

LIMA

Stocks

Ticker	Currency	Price	1D*	5D*	30D*	YTD*	Frequency	Volume (US\$)	Beta	Dividend Yield (%)	Price Earning	Market Cap. (M US\$)	Economic Sector*	Index Weight
▼ ALICORC1 PE**	S/.	6.02	-2.34%	-2.87%	-7.91%	-14.75%	100.00%	843,903	0.96	13.87	12.39	1,262.51	Industrial	3.53%
▲ ATACOBC1 PE**	S/.	0.14	0.00%	-1.43%	-4.83%	0.00%	55.00%	149	1.11	0.00	-	32.07	Mining	1.02%
▲ BACKUSI1 PE**	S/.	19.50	0.52%	-0.31%	3.17%	-3.23%	85.00%	11,760	0.72	4.79	7.29	6,382.98	Industrial	0.82%
▲ BAP PE**	US\$	117.40	-1.10%	-2.25%	-9.66%	-26.90%	100.00%	2,141,716	1.25	1.04	-	11,080.48	Diverse	5.82%
▲ BVN PE**	US\$	7.25	3.28%	8.05%	-7.05%	-39.58%	95.00%	603,408	1.19	0.00	-	1,994.92	Mining	5.88%
▲ CASAGRC1 PE**	S/.	7.61	2.84%	5.69%	30.09%	60.21%	90.00%	118,192	1.20	12.95	5.24	157.68	Agricultural	1.31%
▲ BBVAC1 PE**	S/.	1.96	2.08%	-2.97%	-2.00%	-6.49%	90.00%	311,774	1.01	2.32	13.57	3,258.37	Finance	2.85%
▲ CORAREI1 PE**	S/.	1.81	0.56%	0.00%	21.48%	103.37%	100.00%	127,543	1.07	15.23	2.76	544.57	Industrial	1.72%
▼ CPACASC1 PE**	S/.	5.16	-0.58%	-0.96%	4.24%	-2.64%	95.00%	228,956	0.59	15.31	36.86	586.54	Industrial	2.38%
▲ CVERDEC1 PE**	US\$	32.01	14.28%	24.41%	52.07%	53.01%	100.00%	44,124,120	1.30	1.78	11.67	11,205.29	Mining	5.25%
- ENGEPEC1 PE**	S/.	2.32	0.00%	0.00%	7.41%	-2.11%	50.00%	178	0.69	0.00	10.10	1,367.08	Public Services	1.44%
- ENDISPC1**	S/.	4.28	0.00%	0.00%	-2.73%	-20.74%	45.00%	2,106	0.81	7.72	8.74	672.27	Public Services	0.98%
▲ FERREYC1 PE**	S/.	1.89	1.61%	0.53%	-5.03%	8.62%	100.00%	477,113	1.10	10.41	5.32	453.59	Diverse	4.90%
▲ AENZAC1 PE**	S/.	1.30	-4.41%	2.36%	-17.72%	-25.29%	80.00%	472,012	0.96	0.00	-	278.81	Diverse	4.05%
▲ IFS PE**	US\$	26.50	0.30%	7.72%	-7.02%	-14.35%	95.00%	63,041	1.22	2.91	6.53	3,059.36	Diverse	7.22%
▲ INRETC1 PE**	US\$	35.27	0.77%	-2.30%	-4.68%	-10.03%	90.00%	567,873	0.84	3.86	77.23	3,626.01	Diverse	5.28%
▲ LUSURC1 PE**	S/.	14.28	1.93%	2.00%	5.78%	-44.00%	75.00%	10,086	#N/A #N/A	7.28	14.11	1,710.45	Public Services	1.81%
▲ MINSURI1 PE**	S/.	3.95	3.95%	1.28%	27.42%	113.51%	100.00%	173,926	0.96	8.46	3.01	2,801.17	Mining	3.09%
- PML PE**	US\$	0.14	0.00%	0.00%	-2.78%	32.08%	45.00%	1,168	1.24	0.00	-	37.01	Mining	2.12%
▼ SCCO PE**	US\$	58.63	-1.30%	-1.38%	-2.77%	-11.03%	85.00%	71,330	0.84	5.46	13.94	45,325.76	Mining	2.14%
- SIDERC1 PE**	S/.	1.65	0.00%	0.00%	13.79%	53.06%	100.00%	20,353	0.87	21.46	3.93	284.10	Industrial	1.43%
▼ TV PE**	US\$	0.13	-4.58%	-10.71%	-34.55%	-14.97%	90.00%	94,538	1.27	0.00	-	123.64	Mining	2.93%
▼ UNACEMC1 PE**	S/.	1.90	1.06%	6.15%	11.11%	22.58%	100.00%	781,728	1.14	3.47	7.96	849.72	Industrial	3.00%
- VOLCABC1 PE**	S/.	0.58	0.00%	-9.38%	-18.31%	11.54%	100.00%	1,200,700	1.63	0.00	-	581.59	Mining	5.90%
▲ NEXAPEC1 PE**	S/.	3.50	0.86%	2.94%	3.24%	23.67%	80.00%	47,324	1.16	0.00	9.21	1,092.31	Mining	1.56%

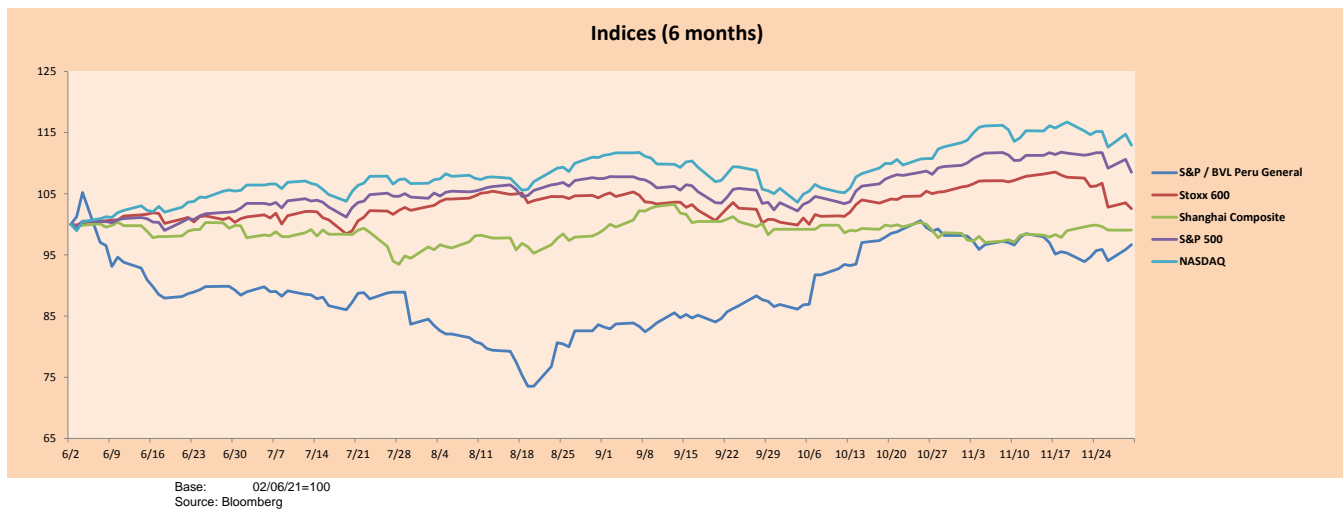
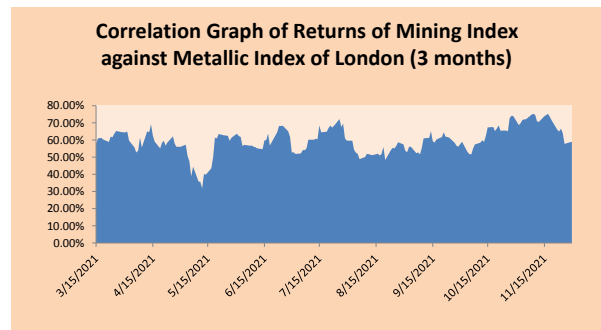
Quantity of shares: 25
Source: Bloomberg, Economática
* Bloomberg Industry Classification System
** PER is used in the stock market and original currency of the instrument
*Legend: Variation 1D: 1 Day; 5D: 5 Days, 1M: 1 Month; YTD: Var.% 12/31/20 to date

Sectorial Indices

	Close	1D*	5D*	30D*	YTD*	Beta
▲ S&P/BVLMining	395.88	0.94%	2.97%	1.51%	1.52%	0.81
▼ S&P/BVLConsumer	1,126.65	-0.21%	-1.46%	-1.87%	3.49%	0.79
▲ S&P/BVLIndustrials	238.05	0.15%	1.82%	3.11%	24.92%	0.83
▼ S&P/BVLFinancials	880.37	-0.77%	0.10%	-7.43%	-14.85%	1.22
▼ S&P/BVLConstruction	261.46	-0.36%	2.28%	6.32%	25.03%	0.72
▲ S&P/BVLPublicSvcs	577.92	0.17%	-1.16%	2.09%	-5.89%	0.30
▲ S&P/BVLElectricUtil	564.19	0.17%	-1.16%	2.09%	-5.89%	0.30

S&P/BVLConstructionTRPEN

*Legend: Variation 1D: 1 Day; 5D: 5 Days, 1M: 1 Month; YTD: Var.% 12/31/20 to date



Base: 02/06/21=100
Source: Bloomberg

Capital Market Laboratory Coordinator: Economist Bruno Bellido
Collaboration: Alonso García, Ariam Loayza, Miguel Solimano y Jairo Valverde
email: pulsobursatil@ulima.edu.pe
facebook: www.facebook.com/pulsobursatil.ul

The content of this document is just for informational purposes. The information and opinions expressed should not be consider as recommendations for future decisions. Under any circumstances, the Capital Market Laboratory of University of Lima will be responsible for the use of the statements in this document.

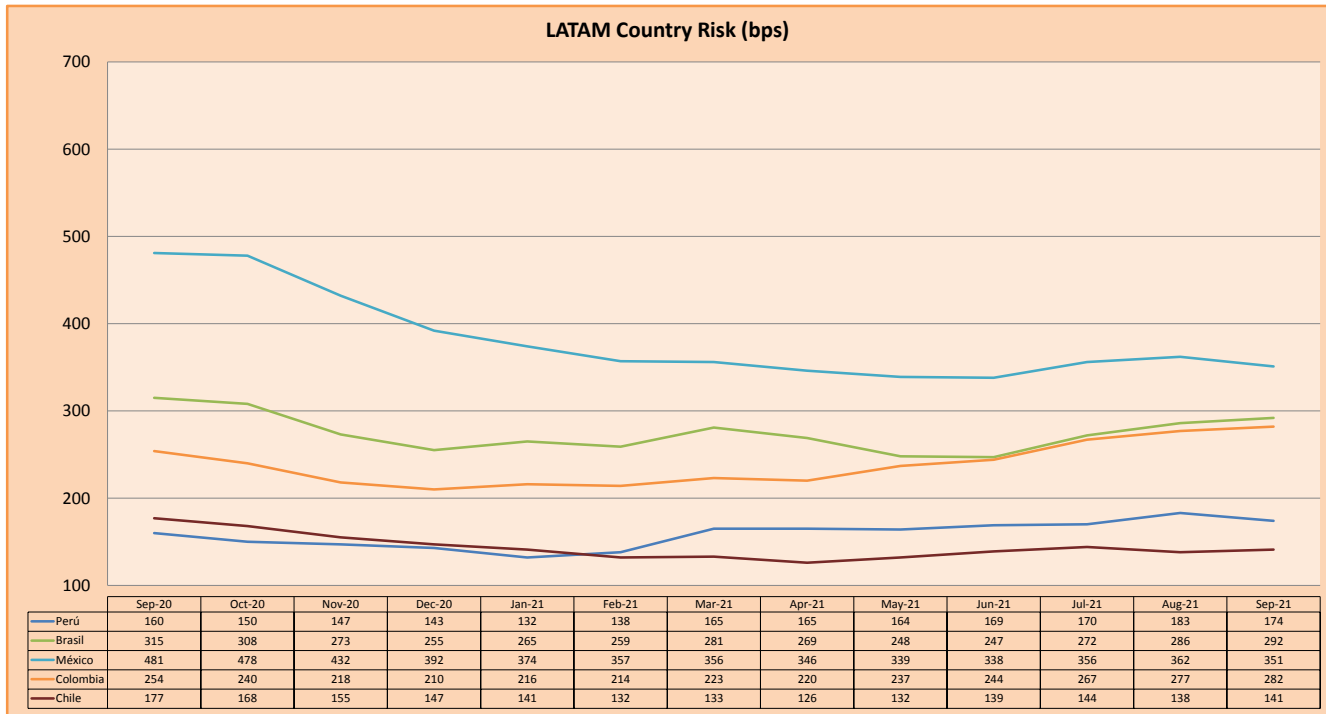
SOVEREIGN RATING

RISK RATINGS			
Moody's	S&P	Fitch	
Aaa	AAA	AAA	Prime
Aa1	AA+	AA+	High credit quality
Aa2	AA	AA	
Aa3	AA-	AA-	
A1	A+	A+	Medium-high grade, with low credit risk
A2	A	A	
A3	A-	A-	
Baa1	BBB+	BBB+	Moderate Credit Risk
Baa2	BBB	BBB	
Baa3	BBB-	BBB-	
Ba1	BB+	BB+	It has speculative elements and it is subject to substantial credit risk
Ba2	BB	BB	
Ba3	BB-	BB-	
B1	B+	B+	It is considered speculative and it has high credit risk
B2	B	B	
B3	B-	B-	
Caa1	CCC+		Bad credit conditions and it is subject to high credit risk
Caa2	CCC		
Caa3	CCC-		
Ca	CC		Very close to default or in default
	C		
C	D	DDD	

Source: Bloomberg

Latin America Credit Rating			
Clasificadora de riesgo			
Country	Moody's	Fitch	S&P
Peru	Baa1	BBB	BBB+
México	Ba2	BB-	BB-
Venezuela	C	WD	NR
Brazil	Ba2	BB-	BB-
Colombia	Baa2	BB+	BB+
Chile	A1	A-	A
Argentine	Ca	WD	CCC+
Panama	Baa2	BBB-	BBB

Source: Bloomberg



Source: BCRP

Capital Market Laboratory Coordinator: Economist Bruno Bellido
Collaboration: Alonso García, Ariam Loayza, Miguel Solimano y Jairo Valverde
email: pulsobursatil@ulima.edu.pe
facebook: www.facebook.com/pulsobursatil.ul

The content of this document is just for informational purposes. The information and opinions expressed should not be consider as recommendations for future decisions. Under any circumstances, the Capital Market Laboratory of University of Lima will be responsible for the use of the statements in this document.