

PULSO BURSÁTIL

FACULTAD DE CIENCIAS EMPRESARIALES Y ECONÓMICAS
CARRERA DE ECONOMÍA
LABORATORIO DE MERCADO DE CAPITALES

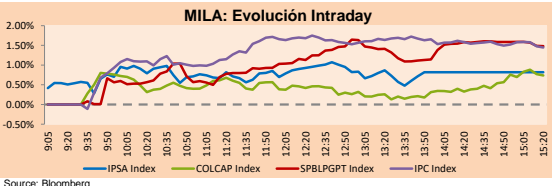


MILA

Lima, december 2, 2021

Main Indexes	Close	1 D	5 D	1 M	YTD	Cap. Burs. (US\$ bill)
▲ IPSA (Chile)	4,370.90	0.89%	-5.02%	3.89%	4.64%	96.43
▲ IGPA (Chile)	21,890.20	0.60%	-4.99%	3.62%	4.20%	115.35
▲ COLSC (Colombia)	918.72	0.25%	-1.55%	-5.98%	-13.25%	4.21
▲ COLCAP (Colombia)	1,440.89	1.60%	7.62%	3.62%	0.21%	77.45
▲ S&P/BVL (Perú*)	20,163.64	1.41%	-0.43%	-2.66%	-3.16%	91.48
▲ S&P/BVL SEL (Perú)	534.95	1.02%	-0.91%	-1.87%	-2.99%	83.92
▲ S&P/BVL LIMA 25	28,633.36	1.54%	-0.45%	0.83%	13.63%	90.27
▲ IPC (México)	50,927.38	1.84%	0.60%	-1.41%	15.57%	294.16
▲ S&P MILA 40	455.03	1.53%	-1.31%	-1.61%	-14.89%	6,255.31

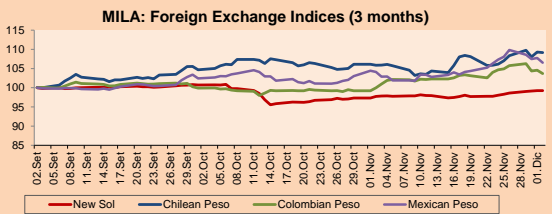
*Legend: Variation 1D: 1 day; 5D: 5 days; 1M: 1 Month; YTD: Var% 12/31/20 to date



Source: Bloomberg

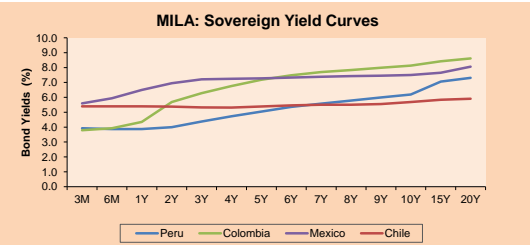
Currency	Price	1D*	5D*	30 D*	YTD*
▼ Sol (PEN)	4,070.4	0.00%	0.93%	1.54%	12.50%
▼ Chilean Peso (CLP)	837.80	-0.12%	2.01%	3.09%	17.70%
▼ Colombian Peso (COP)	3,938.27	-0.84%	-1.16%	3.75%	14.83%
▼ Mexican Peso (MXN)	21.26	-1.14%	-1.41%	2.31%	6.78%

*Legend: Variation 1D: 1 day; 5D: 5 days; 1M: 1 Month; YTD: Var% 12/31/20 to date



Base: 02/09/21=100
Source: Bloomberg

Fixed Income	Currency	Price	Bid Yield (%)	Ask Yield (%)	Duration
PERU 7.35 07/21/25	USD	119.85	1.74	1.62	3.20
PERU 4.125 08/25/27	USD	110.045	2.28	2.20	5.12
PERU 8.75 11/21/33	USD	155.442	3.18	3.12	8.46
PERU 6.55 03/14/37	USD	135.655	3.54	3.49	10.04
PERU 5.625 11/19/2050	USD	138.405	3.51	3.50	16.48
CHILE 2.25 10/30/22	USD	101.526	0.79	0.31	0.90
CHILE 3.125 01/21/26	USD	105.682	1.75	1.64	3.86
CHILE 3.625 10/30/42	USD	107.525	3.16	3.11	15.08
COLOM 11.85 03/09/28	USD	151.166	2.99	2.73	4.80
COLOM 10.375 01/28/33	USD	144.003	5.22	5.05	7.28
COLOM 7.375 09/18/37	USD	119.32	5.56	5.48	9.78
COLOM 6.125 01/18/41	USD	106.628	5.59	5.53	11.30
MEX 4 10/02/23	USD	106.628	5.586	5.528	11.3
MEX5.55 01/45	USD	119.65	4.22	4.20	13.77



Source: Bloomberg

Equity

Largest gains	Exchange	Currency	Price	▲%
GRUPO TELEV-CPO	Mexico	MXN	41.51	6.79
CMPC	Chile	CLP	1400.00	5.65
GRUPO F BANORT-O	Mexico	MXN	134.87	4.80
PROMOTORA Y OPER	Mexico	MXN	155.77	4.61
PARQUE ARAUCO	Chile	CLP	769.00	4.48

Per Turnover	Exchange	Amount (US\$)
GRUPO F BANORT-O	Mexico	41,602,349
WALMART DE MEXIC	Mexico	41,031,681
AMERICA MOVIL-L	Mexico	36,059,083
BANCO DE CHILE	Chile	29,113,416
GRUPO MEXICO-B	Mexico	28,010,689

Largest losses	Exchange	Currency	Price	▼%
CEMENTOS ARGOS	Colombia	COP	6165	-1.99
CAP	Chile	CLP	7450	-1.97
ENTEL	Chile	CLP	2830	-1.74
SOQUIMICH-B	Chile	CLP	50600	-1.58
ITAU CORPBANCA	Chile	CLP	1.685	-1.46

Per Volume	Exchange	Volume
ITAU CORPBANCA	Chile	1,765,992,654
BANCO DE CHILE	Chile	317,055,286
ENEL AMERICAS SA	Chile	92,537,418
BANCO SANTANDER	Chile	72,556,738
AMERICA MOVIL-L	Mexico	39,328,877

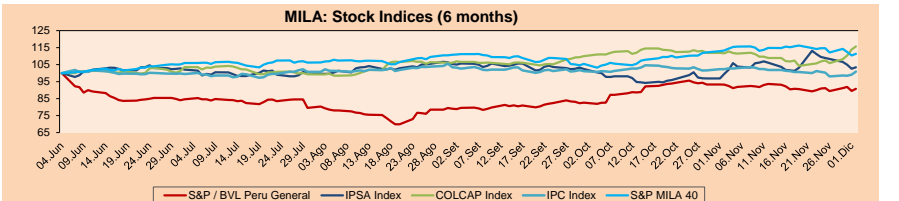
MILA

Peru: The General Index of the BVL ended today's session with a positive result of +1.41%. The index maintains an annual accumulated negative trend of -3.16% in local currency, while the adjusted yield in dollars amounts to -13.93%. Then, the S&P / BVL Peru SEL varied by +1.02% while the S&P / BVL LIMA 25 by +1.54%. The PEN spot reached S / J 4.0705. Headline: Peru has room to increase progressivity of mining tax regime, says IMF.

Chile: The IPSA index ended the day with a positive return of -0.59%. The sectors that benefited the most from the session were Energy (+4.08%) and Consumer Discretionary (+2.81%). The best performing stocks were Empresas CMPC SA (+5.65%) and Parque Arauco SA (+4.48%). Headline: Piñera calls on investors to trust in Chile: It is fertile land for good ideas and opportunities.

Colombia: The COLCAP index ended the day with a positive return of +1.60%. The sector that benefited the most from the session was Materials (+2.70%). The best performing stocks were the preferred stock of Inversiones Argo SA (+5.01%) and the common stock of Inversiones Argo SA (+4.11%). Headline: Duque welcomes improvement in OECD's economic outlook for Colombia.

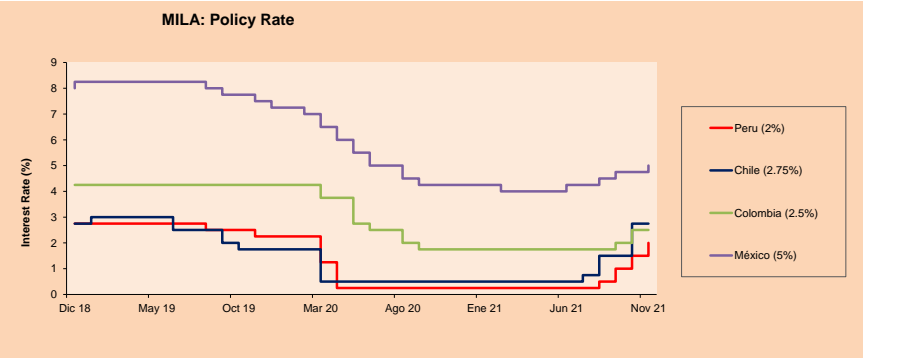
Mexico: The IPC index closed the day with a positive return of +1.84%. The sectors that benefited the most from the session were Financials (+3.51%) and Industrials (+0.28%). The best performing stocks were Banco de Bajas SA (+6.45%) and Grupo Financiero Banorte SAB de CV (+4.80%). Headline: Mexico could impose tariffs on U.S. for tax policy on electric cars.



Base: 07/06/21=100
Source: Bloomberg

ETFs

	Curr.	Close	1D	5D	30 D	YTD	Exchange
▲ iShares MSCI All Peru Caped Index Fund	USD	28.1	2.11%	-2.97%	-5.67%	-18.97%	NYSE Arca
▲ iShares MSCI All Chile Caped Index Fund	USD	24.85	0.08%	-9.83%	-1.58%	-17.74%	Cboe BZX
▲ Global X MSCI Colombia	USD	10.4409	1.86%	3.84%	-3.06%	-8.09%	NYSE Arca
▲ iShares MSCI Mexico Capped	USD	46.86	2.85%	1.80%	-2.44%	9.00%	NYSE Arca
▲ iShares MSCI Emerging Markets	USD	49.62	1.22%	-1.53%	-2.44%	-3.97%	NYSE Arca
▲ Vanguard FTSE Emerging Markets	USD	49.74	1.18%	-1.54%	-1.72%	-0.74%	NYSE Arca
▲ iShares Core MSCI Emerging Markets	USD	60.98	1.21%	-1.47%	-2.23%	-1.71%	NYSE Arca
▲ iShares JP Morgan Emerging Markets Bonds	USD	62.41	0.50%	-1.41%	-1.16%	2.18%	Cboe BZX
- Morgan Stanley Emerging Markets Domestic	USD	5.58	0.00%	-2.28%	-2.96%	-11.29%	New York



Source: Bloomberg

Capital Market Laboratory Coordinator: Economist Bruno Bellido
Collaboration: Alonso García, Ariam Loayza, Miguel Solimano and Jairo Valverde
email: pulsobursatil@ulima.edu.pe
facebook: www.facebook.com/pulsobursatil.ul

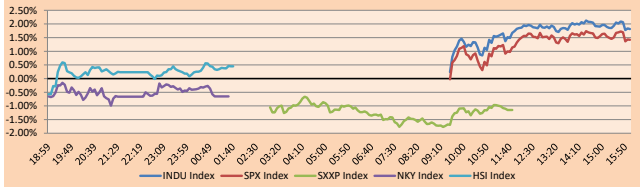
The content of this document is just for informational purposes. The information and opinions expressed should not be considered as recommendations for future decisions. Under any circumstances, the Capital Market Laboratory of University of Lima will be responsible for the use of the statements in this document.

WORLD

Main Indices	Close	1 D*	5 D*	1 M*	YTD*	Market Cap. (US\$ Mill.)
▲ Dow Jones (USA)	34,639.79	1.82%	-3.25%	-3.92%	13.18%	11,144,630
▲ Standard & Poor's 500 (EEUU)	4,577.10	1.42%	-2.65%	-1.16%	21.86%	39,836,812
▲ NASDAQ Composite (USA)	15,361.32	0.83%	-2.93%	-1.71%	19.34%	25,940,294
▼ Stoxx EUROPE 600 (Europe)	465.44	-1.15%	-3.38%	-3.29%	16.64%	11,458,026
▼ DAX (Germany)	15,263.11	-1.35%	-4.11%	-4.37%	11.26%	1,453,947
▼ FTSE 100 (United Kingdom)	7,129.21	-0.55%	-2.48%	-1.65%	10.35%	1,540,985
▼ CAC 40 (France)	6,795.75	-1.25%	-3.96%	-2.23%	22.41%	2,001,708
▼ IBEX 35 (Spain)	8,300.80	-1.30%	-6.11%	-8.08%	2.81%	493,108
▲ MSCI AC Asia Pacific Index	192.02	0.19%	-2.42%	-3.00%	-3.95%	25,599,943
▲ HANG SENG (Hong Kong)	23,788.93	0.55%	-3.84%	-4.94%	-12.64%	3,668,344
▲ SHANGHAI SE Comp. (China)	3,573.84	-0.09%	-0.29%	2.15%	2.90%	7,337,953
▲ NIKKEI 225 (Japan)	27,753.37	-0.65%	-5.32%	-5.93%	1.19%	4,028,517
▲ S&P/ASX 200 (Australia)	7,225.18	-0.15%	-2.46%	-2.13%	9.94%	1,641,735
▲ KOSPI (South Korea)	2,945.27	1.84%	0.60%	-1.29%	2.22%	1,776,404

*Legend: Variation 1D: 1 Day; 5D: 5 Days; 1M: 1 Month; YTD: Var. % 12/31/20 to date

Global Markets: Intraday Evolution (var %)

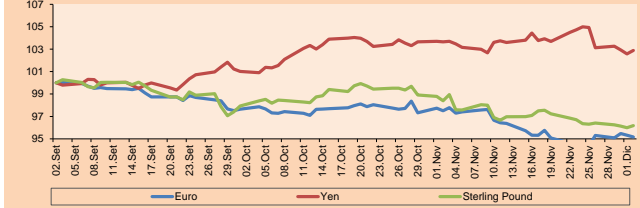


Source: Bloomberg

Currency	Price	1 D*	5 D*	1 M*	YTD*
▼ Euro	1.1301	-0.17%	0.82%	-2.40%	-7.49%
▲ Yen	113.1100	0.29%	-1.95%	-0.75%	9.55%
▲ Sterling Pound	1.3305	0.20%	-0.13%	-2.26%	-2.67%
▲ Yuan	6.3771	0.14%	-0.14%	-0.36%	-2.30%
▼ Hong Kong Dollar	7.9111	-0.02%	-0.07%	0.12%	0.49%
▼ Brazilian Real	5.6393	-0.73%	1.37%	-0.83%	8.48%
▲ Argentine Peso	101.0872	0.08%	0.40%	1.22%	20.13%

*Legend: Variation 1D: 1 Day; 5D: 5 Days; 1M: 1 Month; YTD: Var. % 12/31/20 to date

Foreign Exchange Indices (3 months)

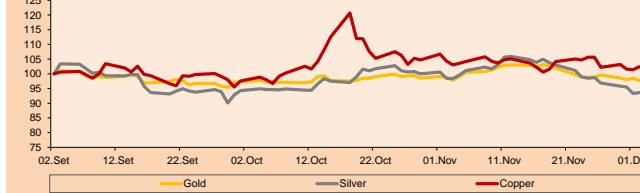


Base: 02/09/21=100
Source: Bloomberg

Commodities	Close	1 D*	5 D*	1 M*	YTD*
▼ Oro (US\$ Oz. T) (LME)	1,768.74	-0.73%	-1.12%	-1.06%	-6.83%
▲ Plata (US\$ Oz. T) (LME)	22.39	0.31%	-5.14%	-4.89%	-15.21%
▲ Cobre (US\$ TM) (LME)	9,590.00	1.03%	-3.05%	-1.85%	23.76%
▼ Zinc (US\$ TM) (LME)	3,231.00	-1.15%	-4.77%	-4.56%	18.38%
▲ Petróleo WTI (US\$ Barril) (NYM)	66.50	1.42%	-15.17%	-19.34%	40.03%
▼ Estante (US\$ TM) (LME)	39,639.00	-0.67%	-2.81%	4.62%	92.94%
▼ Plomo (US\$ TM) (LME)	2,277.00	-2.04%	-1.30%	-4.93%	15.25%
▲ Azúcar #11 (US\$ Libra) (NYB-ICE)	18.62	0.11%	-6.57%	-4.71%	30.48%
▲ Cacao (US\$ TM) (NYB-ICE)	2,453.00	4.29%	-2.35%	-2.15%	-1.49%
▲ Café Arábica (US\$ TM) (NYB-ICE)	236.60	1.44%	-3.59%	12.21%	73.65%

*Legend: Variación 1D: 1 Día; 5D: 5 Días; 1M: 1 Mes; YTD: Var. % 31/12/20 a la fecha

Principal Metals Index (3 months)



Base: 02/09/21=100
Source: Bloomberg

Equity

Germany (Stocks from DAX Index)

Largest gains	Curr.	Price	▲%	Exchange	Largest losses	Curr.	Price	▼%	Exchange
DBK GY	EUR	10.922	0.33	Xetra	IFX GY	EUR	40,255	-4.36	Xetra
FME GY	EUR	53.62	0.11	Xetra	DPW GY	EUR	51.88	-3.12	Xetra
HENQ GY	EUR	70.74	0.00	Xetra	DTE GY	EUR	15,588	-2.47	Xetra
FRE GY	EUR	33.83	-0.21	Xetra	PUM GY	EUR	105.6	-2.40	Xetra

Europe (Stocks from STOXX EUROPE 600)

Largest gains	Curr.	Price	▲%	Exchange	Largest losses	Curr.	Price	▼%	Exchange
LINE SS	SEK	538.5	3.64	Stockholm	ROO LN	Gbp	262.6	-9.48	Londres
ARGX BB	EUR	257.3	2.96	EN Brussels	SINCH SS	SEK	110	-9.43	Stockholm
RF FP	EUR	74.55	2.83	EN Paris	DARK LN	Gbp	433.8	-8.98	Londres
SIGN SE	CHF	25.6	2.73	SIX Swiss Ex	G24 GY	EUR	54.1	-8.80	Xetra

Global Overview:

United States:

The main indices of the United States closed the day higher thanks to a wave of buybacks of the oversold shares after the largest intraday fall in the market before the confirmation of the first case of the Omicron variant. The financial sector outperformed the broader market, led by bank stocks, as Treasury bond yields surged after some on Wall Street suggested that Omicron could accelerate the end of the pandemic. On the economic front, better-than-expected weekly jobless claims data fueled optimism about the job market recovery. The DOW JONES index + 1.82% closed the day with gains and with 23 of its 30 values higher. The most benefited sectors were Industrial + 3.15%, Communication Services + 3.13% and Finance + 3.11%. Meanwhile, the S&P 500 + 1.42% index closed with gains driven by the Industrial + 2.89%, Energy + 2.83% and Finance + 2.83% sectors. Finally, the NASDAQ + 0.83% technology index closed in positive but contained territory due to an increase in sovereign yields. Thus, DOW JONES + 1.82%; S&P 500 + 1.42%; NASDAQ + 0.83% ended the day with positive results.

Europe:

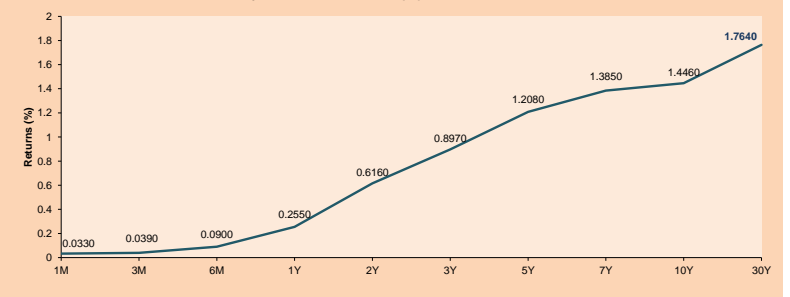
The main indices of the European continent ended the session lower, after several countries in the region increased their restrictions to stop the spread of the new "Omicron" variant. Likewise, both the economic recovery and the reduction in inflation are affected due to this situation. In this way, the pan-European STOXX 600 index ended lower, surpassing the recovery that it had yesterday thanks to the vulnerable sectors. On the other hand, Germany's DAX post losses, after agreeing to new COVID-19 restrictions targeting people who are not yet vaccinated. In addition, the words of the US Secretary of the Treasury, Janet Yellen, who maintain a greater durability of the pandemic due to this variant worries investors. On the other hand, the CAC40 in France ended lower, after the decline in technology stocks and travel stocks. Likewise, the first cases of Omicron in Paris are detected worrying the government and promoting possible restrictions. Finally, the FTSE100 in the United Kingdom ends with negative results, offsetting the gains of the previous day and weighed down by concerns about the current situation of the variant. Additionally, the president of the Central Bank of England highlighted concerns about problems in the supply chain. Thus, FTSE 100 -0.55%; CAC 40 -1.25%; DAX -1.35%; STOXX 600 -1.15% ended the day lower.

Asia:

The main Asian indexes closed with mixed performances, due to the expectation of an increase in US interest rates, in addition to the uncertainty surrounding the new Omicron variant and its impact on the global economy, which generated caution among investors. The Chinese market closed with positive returns, as China, the world's largest soybean importer, benefited from the reduction in U.S. and Brazilian soybeans. Meanwhile, the Hong Kong market closed higher, extending the previous day's gains, as traders made buy trades to recover recent losses, amid studies to determine the severity of the Omicron variant. On the other hand, Japanese stocks had a negative variation, as Federal Reserve System Chairman Jerome Powell stated that the possibility of removing stimulus is being discussed, acknowledging persistent inflation. Likewise, South Korea's KOSPI posted a rise in performance, despite the Bank of Korea's expectation of faster inflation following the surprise seen in November. However, Australian stocks finished lower, as Australia's GDP fell, but had a smaller-than-expected decline. Thus, NIKKEI -0.65%; HANG SENG -0.55%; CSI 300 +0.25%; S&P/ASX 200 -0.15%; KOSPI -1.57% ended with mixed performances.

ETFs	Curr.	Close	1D	5D	30 D	YTD	Exchange
SPDR S&P 500 ETF TRUST	USD	457.40	1.53%	-2.56%	-0.97%	22.34%	NYSE Arca
ISHARES MSCI EMERGING MARKET	USD	49.62	1.22%	-1.53%	-2.44%	-3.97%	NYSE Arca
ISHARES IBOXX HIGH YLD CORP	USD	86.00	0.74%	-0.10%	-0.89%	-1.49%	NYSE Arca
FINANCIAL SELECT SECTOR SPDR	USD	38.66	2.98%	-3.59%	-4.26%	31.14%	NYSE Arca
VANECK GOLD MINERS ETF	USD	30.46	-1.20%	-6.05%	-3.39%	-15.44%	NYSE Arca
ISHARES RUSSELL 2000 ETF	USD	219.21	2.79%	-5.34%	-6.50%	11.81%	NYSE Arca
SPDR GOLD SHARES	USD	165.24	-0.55%	-1.12%	-1.15%	-7.36%	NYSE Arca
ISHARES 20+ YEAR TREASURY BO	USD	152.53	0.12%	3.89%	3.70%	-3.30%	NASDAQ GM
INVESCO QQQ TRUST SERIES 1	USD	389.91	0.72%	-2.22%	0.22%	24.29%	NASDAQ GM
ISHARES BIOTECHNOLOGY ETF	USD	151.23	0.33%	-1.41%	-7.03%	-0.17%	NASDAQ GM
ENERGY SELECT SECTOR SPDR	USD	55.58	2.91%	-4.02%	-4.02%	46.65%	NYSE Arca
PROSHARES ULTRA VIX ST FUTUR	USD	20.80	-8.61%	34.98%	34.19%	-80.47%	Cboe BZX
UNITED STATES OIL FUND LP	USD	48.29	2.66%	-13.58%	-16.06%	46.29%	NYSE Arca
ISHARES MSCI BRAZIL ETF	USD	29.72	4.21%	-0.34%	1.61%	-19.83%	NYSE Arca
SPDR S&P OIL & GAS EXP & PR	USD	96.56	3.24%	-8.88%	-10.94%	65.06%	NYSE Arca
UTILITIES SELECT SECTOR SPDR	USD	66.73	1.27%	-1.61%	-0.71%	6.43%	NYSE Arca
ISHARES US REAL ESTATE ETF	USD	108.75	3.04%	-2.33%	-1.58%	26.97%	NYSE Arca
SPDR S&P BIOTECH ETF	USD	114.57	2.18%	-4.56%	-12.72%	-18.62%	NYSE Arca
ISHARES IBOXX INVESTMENT GRA	USD	133.15	0.23%	1.17%	-0.25%	-3.61%	NYSE Arca
ISHARES JIP MORGAN USD EMERG	USD	108.50	0.59%	0.68%	-0.80%	-6.39%	NASDAQ GM
REAL ESTATE SELECT SECT SPDR	USD	48.05	2.74%	-2.20%	-0.68%	31.43%	NYSE Arca
ISHARES CHINA LARGE-CAP ETF	USD	38.36	0.68%	-3.84%	-3.96%	-17.38%	NYSE Arca
CONSUMER STAPLES SPDR	USD	70.69	1.06%	-3.00%	-1.60%	4.80%	NYSE Arca
VANECK JUNIOR GOLD MINERS	USD	40.60	-1.17%	-7.96%	-5.32%	-25.15%	NYSE Arca
SPDR BLOOMBERG HIGH YIELD BO	USD	107.29	0.69%	-0.18%	-0.92%	-1.51%	NYSE Arca
VANGUARD REAL ESTATE ETF	USD	108.13	3.00%	-2.66%	-1.79%	27.32%	NYSE Arca
GRAYSCALE BITCOIN TRUST BTC	USD	45.39	1.16%	-2.22%	-10.05%	41.84%	OTC US

USA Treasury Bonds Yield Curve (%)



Source: Bloomberg

Capital Market Laboratory Coordinator: Economist Bruno Bellido
Collaboration: Alonso García, Ariam Loayza, Miguel Solimano y Jairo Valverde
email: pulsohorsatil@ulima.edu.pe
facebook: www.facebook.com/pulsohorsatil.ul

LIMA

Stocks

Ticker	Currency	Price	1D*	5D*	30D*	YTD*	Frequency	Volume (US\$)	Beta	Dividend Yield (%)	Price Earning	Market Cap. (M US\$)	Economic Sector*	Index Weight
▲ ALICORC1 PE**	S/.	5.85	0.25%	-1.55%	-5.98%	-13.25%	100.00%	810,130	0.96	14.27	12.04	1,225.58	Industrial	3.53%
▲ ATACOBC1 PE**	S/.	0.14	0.00%	0.00%	-1.43%	0.00%	68.42%	3,432	1.11	0.00	-	32.03	Mining	1.02%
▲ BACKUSI1 PE**	S/.	20.80	6.72%	5.32%	4.47%	3.23%	84.21%	209,412	0.72	4.49	7.67	6,650.45	Industrial	0.82%
▲ BAP PE**	US\$	115.50	1.85%	-3.75%	-12.42%	-28.08%	100.00%	147,864	1.25	1.06	-	10,901.16	Diverse	5.82%
▲ BVN PE**	US\$	7.10	3.05%	3.50%	-4.70%	-40.83%	94.74%	458,285	1.20	0.00	-	1,953.65	Mining	5.88%
▲ CASAGRC1 PE**	S/.	8.40	12.75%	12.00%	43.59%	76.84%	84.21%	208,997	1.17	11.73	5.78	173.83	Agricultural	1.31%
- BBVAC1 PE**	S/.	1.90	0.00%	-5.00%	-5.00%	-9.35%	89.47%	407,834	1.01	2.39	13.10	3,154.75	Finance	2.85%
- CORARE1 PE**	S/.	1.79	1.70%	-3.24%	20.13%	101.12%	100.00%	292,422	1.06	15.40	2.73	543.01	Industrial	1.72%
▲ CPACASC1 PE**	S/.	4.94	0.61%	-5.54%	1.65%	-6.79%	94.74%	512,549	0.61	15.99	35.29	562.91	Industrial	2.38%
▲ CVERDEC1 PE**	US\$	32.51	1.59%	25.04%	50.51%	55.40%	100.00%	3,814,683	1.31	1.76	11.85	11,380.32	Mining	5.25%
- ENGEPEC1 PE**	S/.	2.23	0.00%	-4.29%	3.72%	-5.91%	57.89%	11,263	0.69	0.00	9.71	1,312.43	Public Services	1.44%
- ENDISPC1**	S/.	4.27	0.00%	-0.23%	-2.95%	-20.93%	52.63%	1,268	0.81	0.00	8.72	669.88	Public Services	0.98%
- FERREY1 PE**	S/.	1.82	0.00%	-3.70%	-5.70%	4.60%	100.00%	653,078	1.10	10.81	5.13	436.26	Diverse	4.90%
▲ AENZAC1 PE**	S/.	1.33	2.31%	-1.48%	-14.19%	-23.56%	78.95%	417,115	0.93	0.00	-	284.90	Diverse	4.05%
▼ IFS PE**	US\$	25.00	-2.15%	-5.30%	-12.80%	-19.20%	94.74%	91,229	1.22	3.08	6.17	2,886.19	Diverse	7.22%
▼ INRETC1 PE**	US\$	34.30	-0.58%	-4.72%	-8.29%	-12.50%	89.47%	710,788	0.85	3.97	75.22	3,526.29	Diverse	5.28%
▲ LUSURC1 PE**	S/.	14.26	0.07%	1.86%	2.59%	-44.08%	73.68%	73,551	#N/A N/F	7.29	14.09	1,705.96	Public Services	1.81%
▲ MINSUR1 PE**	S/.	3.95	4.50%	1.28%	27.42%	113.51%	100.00%	1,801,193	0.96	8.46	3.00	2,797.72	Mining	3.09%
- PML PE**	US\$	0.14	0.00%	0.00%	-1.41%	32.08%	57.89%	1,168	1.24	0.00	-	37.01	Mining	2.12%
▲ SCCO PE**	US\$	58.29	0.50%	-1.75%	-2.20%	-11.55%	84.21%	36,125	0.83	5.49	13.86	45,062.91	Mining	2.14%
- SIDERC1 PE**	S/.	1.61	0.00%	-3.59%	11.03%	49.35%	100.00%	22,001	0.87	21.99	3.84	276.88	Industrial	1.43%
▼ TV PE**	US\$	0.11	-3.39%	-15.56%	-36.67%	-22.45%	89.47%	4,420	1.27	0.00	-	112.76	Mining	2.93%
▲ UNACEM1 PE**	S/.	2.00	5.26%	7.53%	17.65%	29.03%	100.00%	1,828,980	1.13	3.30	8.37	893.34	Industrial	3.00%
▲ VOLCABC1 PE**	S/.	0.58	1.75%	-9.38%	-15.94%	11.54%	100.00%	557,381	1.61	0.00	-	580.88	Mining	5.90%
- NEXAPEC1 PE**	S/.	3.45	0.00%	-1.43%	1.77%	21.91%	73.68%	2,967	1.16	0.00	9.06	1,075.52	Mining	1.56%

Quantity of shares: 25
Source: Bloomberg, Económica
* Bloomberg Industry Classification System
** PER is used in the stock market and original currency of the instrument
*Legend: Variation 1D: 1 Day; 5D: 5 Days, 1M: 1 Month; YTD: Var.% 12/31/20 to date

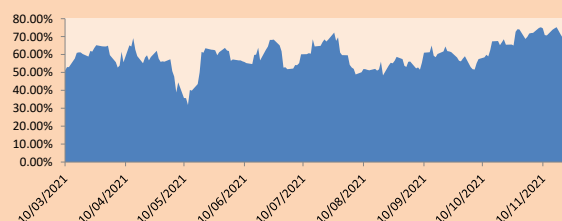
Sectorial Indices

	Close	1D*	5D*	30D*	YTD*	Beta
▲ S&P/BVLMining	393.74	1.33%	1.50%	2.31%	0.97%	0.79
▲ S&P/BVLConsumer	1,116.45	1.11%	-2.48%	-3.41%	2.56%	0.79
▲ S&P/BVLIndustrials	237.76	1.88%	-0.30%	4.61%	24.77%	0.83
▲ S&P/BVLFinancials	863.98	1.50%	-2.89%	-10.73%	-16.44%	1.22
▲ S&P/BVLConstruction	264.45	2.53%	0.90%	8.60%	26.46%	0.73
▲ S&P/BVLPublicSvcs	571.28	0.26%	-2.43%	1.06%	-6.97%	0.30
▲ S&P/BVLElectricUtil	557.72	0.26%	-2.43%	1.06%	-6.97%	0.30

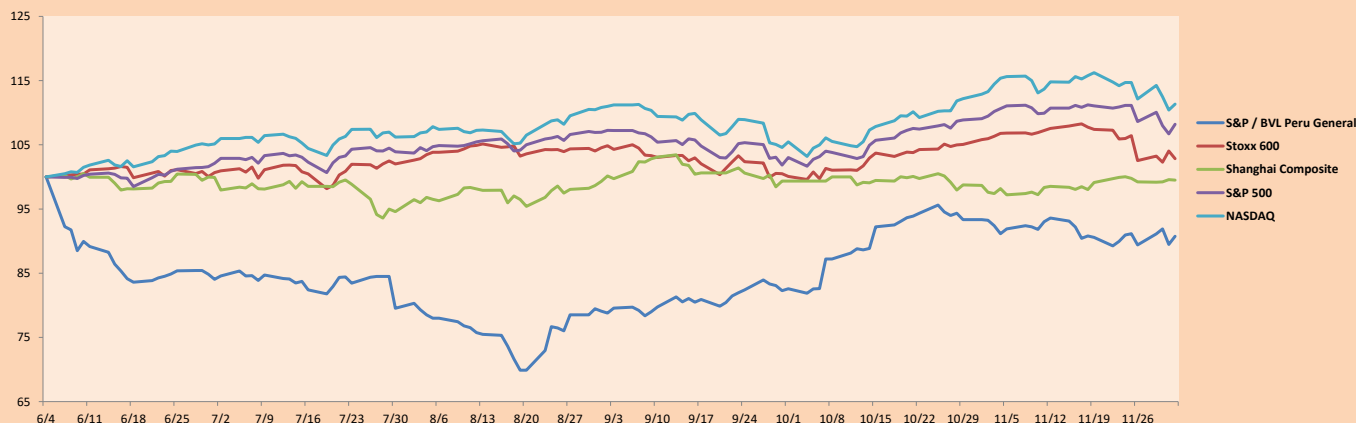
S&P/BVLConstructionTRPEN

*Legend: Variation 1D: 1 Day; 5D: 5 Days, 1M: 1 Month; YTD: Var.% 12/31/20 to date

Correlation Graph of Returns of Mining Index against Metallic Index of London (3 months)



Indices (6 months)



Base: 04/06/21=100
Source: Bloomberg

Capital Market Laboratory Coordinator: Economist Bruno Bellido
Collaboration: Alonso García, Ariam Loayza, Miguel Solimano y Jairo Valverde
email: pulsohorsatil@ulima.edu.pe
facebook: www.facebook.com/pulsohorsatil.ul

SOVEREIGN RATING

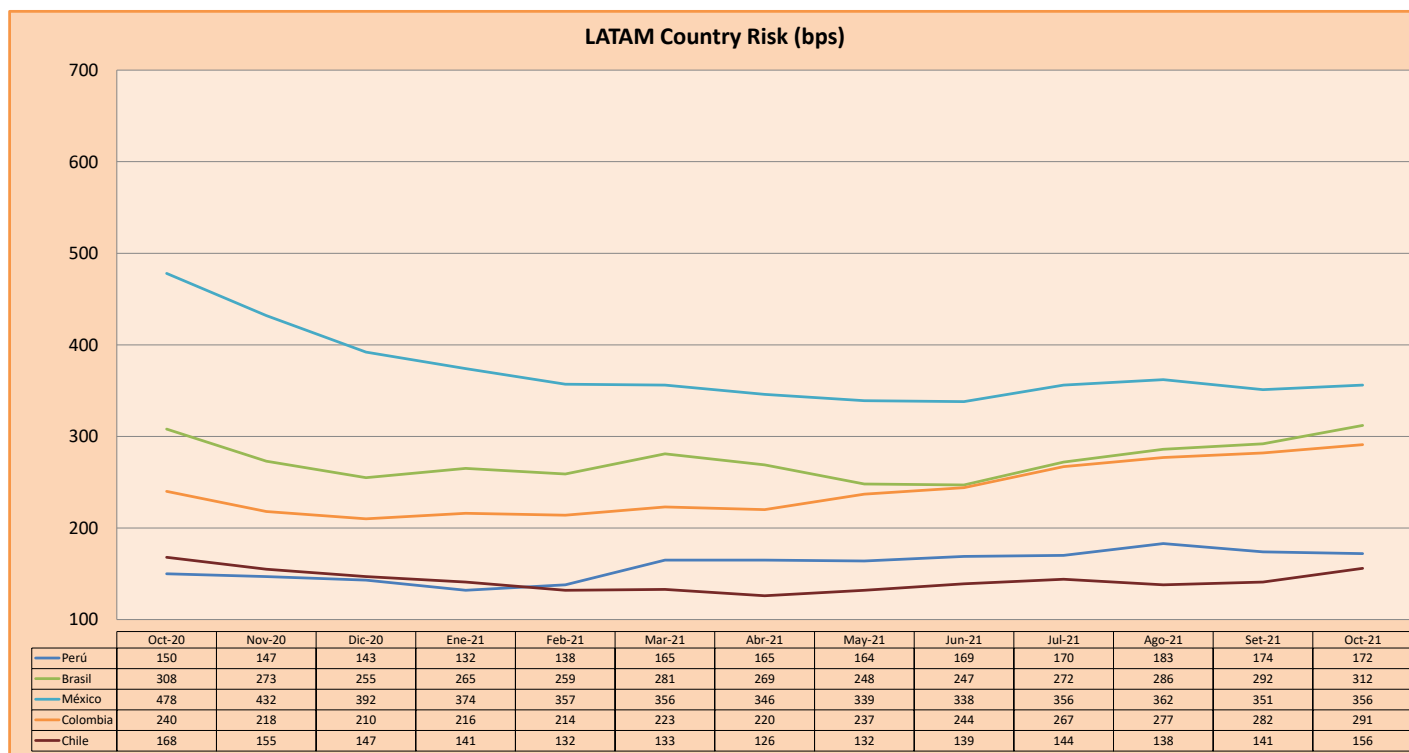
RISK RATINGS

Moody's	S&P	Fitch		
Aaa	AAA	AAA	Prime	
Aa1	AA+	AA+	High credit quality	
Aa2	AA	AA		
Aa3	AA-	AA-		
A1	A+	A+	Medium-high grade, with low credit risk	
A2	A	A		
A3	A-	A-		
Baa1	BBB+	BBB+	Moderate Credit Risk	
Baa2	BBB	BBB		
Baa3	BBB-	BBB-		
Ba1	BB+	BB+	It has speculative elements and it is subject to substantial credit risk	
Ba2	BB	BB		
Ba3	BB-	BB-		
B1	B+	B+	It is considered speculative and it has high credit risk	
B2	B	B		
B3	B-	B-		
Caa1	CCC+	CCC	Bad credit conditions and it is subject to high credit risk	
Caa2	CCC			
Caa3	CCC-			
Ca	C	DDD	Very close to default or in default	
C	D			DD
				D

Source: Bloomberg

Latin America Credit Rating			
Clasificadora de riesgo			
Country	Moody's	Fitch	S&P
Peru	Baa1	BBB	BBB+
México	Ba2	BB-	BB-
Venezuela	C	WD	NR
Brazil	Ba2	BB-	BB-
Colombia	Baa2	BB+	BB+
Chile	A1	A-	A
Argentina	Ca	WD	CCC+
Panama	Baa2	BBB-	BBB

Source: Bloomberg



Source: BCRP

Capital Market Laboratory Coordinator: Economist Bruno Bellido
Collaboration: Alonso García, Ariam Loayza, Miguel Solimano y Jairo Valverde
email: pulsobursatil@ulima.edu.pe
facebook: www.facebook.com/pulsobursatil.ul