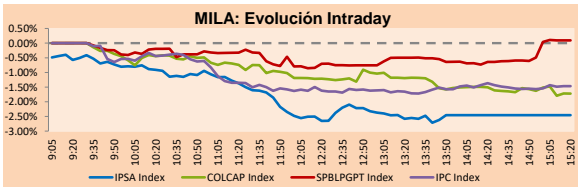


MILA

Lima, december 13, 2021

Main Indexes	Close	1 D	5 D	1 M	YTD	Cap. Burs. (US\$ bill)
▼ IPSA (Chile)	4,301.25	-2.37%	-1.56%	-4.12%	2.97%	98.24
▼ IGPA (Chile)	21,545.58	-2.16%	-1.51%	-4.18%	2.56%	116.93
▼ COLSC (Colombia)	941.71	-0.40%	1.76%	-2.75%	-11.07%	4.33
▼ COLCAP (Colombia)	1,353.91	-2.54%	-5.45%	-0.19%	-5.84%	78.31
▲ S&P/BVL (Perú)*	20,294.55	0.11%	1.47%	-2.41%	-2.53%	95.16
▲ S&P/BVL SEL (Perú)	538.44	0.33%	1.73%	-1.92%	-2.35%	85.76
▲ S&P/BVL LIMA 25	29,497.93	1.47%	4.07%	1.76%	17.06%	93.94
▼ IPC (México)	50,419.17	-1.55%	-0.37%	-1.97%	14.42%	306.04
▼ S&P MILA 40	443.29	-1.91%	-1.77%	-6.15%	-17.08%	6,432.00

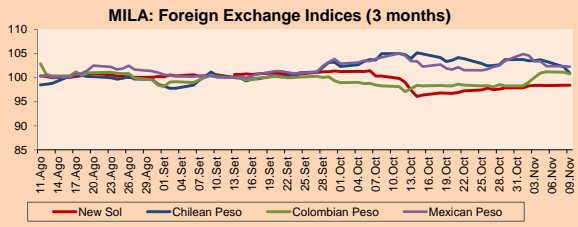
*Legend: Variation 1D: 1 day; 5D: 5 days; 1M: 1 Month; YTD: Var% 12/31/20 to date



Source: Bloomberg

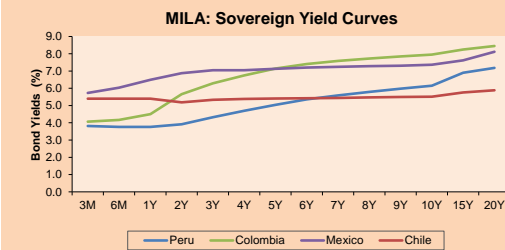
Currency	Price	1D*	5D*	30 D*	YTD*
▼ Sol (PEN)	4,0537	-0.15%	-0.78%	0.87%	12.04%
▼ Chilean Peso (CLP)	841.63	-0.07%	-0.58%	5.06%	18.24%
▼ Colombian Peso (COP)	3,890.83	-0.27%	-1.05%	0.16%	13.44%
▲ Mexican Peso (MXN)	21.02	0.64%	-0.98%	2.43%	5.54%

*Legend: Variation 1D: 1 day; 5D: 5 days; 1M: 1 Month; YTD: Var% 12/31/20 to date



Base: 13/09/21=100
Source: Bloomberg

Fixed Income	Currency	Price	Bid Yield (%)	Ask Yield (%)	Duration
PERU 7.35 07/21/25	USD	119.748	1.75	1.60	3.18
PERU 4.125 08/25/27	USD	110.477	2.21	2.11	5.09
PERU 8.75 11/21/33	USD	156.496	3.09	3.03	8.45
PERU 6.55 03/14/37	USD	137.173	3.43	3.38	10.04
PERU 5.625 11/18/2050	USD	141.757	3.37	3.35	16.60
CHILE 2.25 10/30/22	USD	101.484	0.81	0.29	0.87
CHILE 3.125 01/21/26	USD	105.629	1.76	1.64	3.83
CHILE 3.625 10/30/42	USD	107.652	3.15	3.10	15.04
COLOM 11.85 03/09/28	USD	152.412	2.74	2.59	4.78
COLOM 10.375 01/28/33	USD	144.762	5.12	5.00	7.26
COLOM 7.375 09/18/37	USD	118.776	5.60	5.53	9.77
COLOM 6.125 01/18/41	USD	106.08	5.64	5.57	11.28
MEX 4 10/02/23	USD	106.08	5.638	5.565	11.28
MEX5.55 01/45	USD	120.582	4.18	4.13	13.79



Source: Bloomberg

Equity

Largest gains	Exchange	Currency	Price	▲%
MEGACABLE-CPO	Mexico	MXN	65.27	2.27
VOLCAN CIA MIN-B	Peru	PEN	0.59	1.72
FERREYCORP SAA	Peru	PEN	1.88	1.62
WALMART DE MEXIC	Mexico	MXN	74.50	1.09
BECLÉ SAB DE CV	Mexico	MXN	51.03	0.93

Per Turnover	Exchange	Amount (US\$)
WALMART DE MEXIC	Mexico	122,393,242
GRUPO F BANORT-O	Mexico	59,729,982
AMERICA MOVIL-L	Mexico	47,365,245
FALABELLA SA	Chile	44,805,853
CEMEX SAB-CPO	Mexico	44,041,238

Largest losses	Exchange	Currency	Price	▼%
ISA SA	Colombia	COP	20500	-5.18
GRUPO F BANORT-O	Mexico	MXN	126.63	-4.42
ENEL CHILE SA	Colombia	COP	13290	-4.39
EMPRESAS COPEC	Chile	CLP	6030	-4.29
BANCO SANTANDER	Chile	CLP	36.34	-4.27

Per Volume	Exchange	Volume
ITAU CORPBANCA	Chile	1,278,343,370
BANCO DE CHILE	Chile	124,633,939
ENEL CHILE SA	Chile	73,666,865
CEMEX SAB-CPO	Mexico	73,470,390
BANCO SANTANDER	Chile	69,570,820

MILA

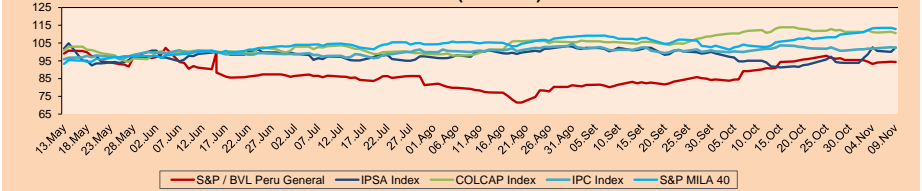
Peru: The General Index of the BVL ended today's session with a positive result of +0.11%. The index maintains an annual accumulated negative trend of -2.53% in local currency, while the adjusted yield in dollars amounts to -13.01%. Then, the S&P / BVL Peru SEL changed by +0.33% while the S&P / BVL LIMA 25 by +1.47%. The PEN spot reached S / 4.0537. Headline: BCR: Economy would have grown between 4% and 6% in October

Chile: The IPSA index ended the day with a negative return of -2.37%. The sectors that benefited the least from the session were Energy (-4.29%) and Finance (-3.36%). The worst performing stocks were Empresas Copec SA (-4.29%) and Banco Santander Chile (-4.27%). Headline: IPSA falls 2.37% and falls to its lowest level in almost a month ahead of elections and a sharp rise in interest rates

Colombia: The COLCAP index ended the day with a negative return of -2.54%. The most affected sectors of the day were Materials (-3.56%) and Energy (-2.56%). The worst performing stocks were Interconectado Eléctrica SA (-5.18%) and Grupo Argos SA (-4.39%). Owner: Gilinski Group extends Nutresa acquisition offer until January

Mexico: The IPC index closed the day with a positive return of -1.55%. The sectors that benefited the least from the session were Finance (-3.12%) and Communication Services (-2.40%). The worst performing stocks were Grupo Financiero Banorte (-4.42%) and Banco del Bajío SA (-4.30%) Headline: Wall Street 'falters' prior to the Fed's monetary policy announcement

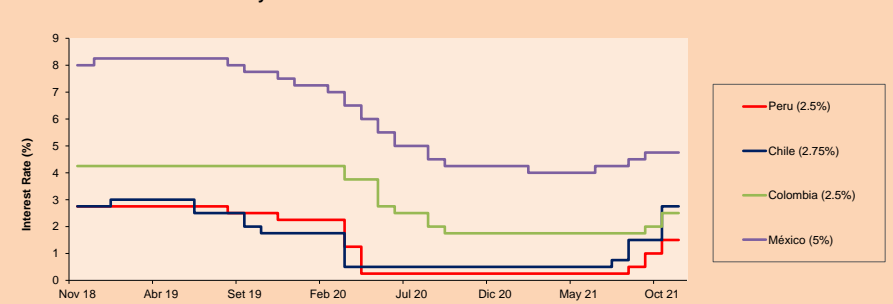
MILA: Stock Indices (6 months)



Base: 13/05/21=100
Source: Bloomberg

ETFs	Curr.	Close	1D	5D	30 D	YTD	Exchange
▼ iShares MSCI All Peru Caped Index Fund	USD	28.06	-2.20%	-0.85%	-7.42%	-19.09%	NYSE Arca
▼ iShares MSCI All Chile Caped Index Fund	USD	23.59	-6.76%	-5.94%	-13.27%	-21.91%	Cboe BZX
▼ Global X MSCI Colombia	USD	9.9107	-2.17%	-5.05%	-4.52%	-12.76%	NYSE Arca
▼ iShares MSCI Mexico Capped	USD	46.43	-3.43%	-0.36%	-4.82%	8.00%	NYSE Arca
▼ iShares MSCI Emerging Markets	USD	48.59	-2.98%	-1.44%	-6.56%	-5.96%	NYSE Arca
▼ Vanguard FTSE Emerging Markets	USD	49.46	-1.53%	0.18%	-5.03%	-1.30%	NYSE Arca
▼ iShares Core MSCI Emerging Markets	USD	59.3	-3.77%	-2.27%	-7.10%	-4.42%	NYSE Arca
▼ iShares JP Morgan Emerging Markets Bonds	USD	61.85	-2.04%	-0.80%	-4.12%	1.26%	Cboe BZX
▼ Morgan Stanley Emerging Markets Domestic	USD	5.54	-0.36%	-0.18%	-5.94%	-11.92%	New York

MILA: Policy Rate



Source: Bloomberg

LIMA

Stocks

Ticker	Currency	Price	1D*	5D*	30D*	YTD*	Frequency	Volume (US\$)	Beta	Dividend Yield (%)	Price Earning	Market Cap. (M US\$)	Economic Sector*	Index Weight
▼ ALICORC1 PE**	S/.	5.60	-0.40%	1.76%	-2.75%	-11.07%	100.00%	447,401	0.82	14.91	11.52	1,178.38	Industrial	3.53%
ATACOBC1 PE**	S/.	0.14	0.00%	0.00%	-1.43%	0.00%	89.47%	154	1.11	0.00	-	32.16	Mining	1.02%
▼ BACKUS11 PE**	S/.	22.20	-0.85%	6.22%	13.85%	10.17%	100.00%	37,021	0.72	4.21	8.18	7,083.39	Industrial	0.82%
▼ BAP PE**	US\$	110.20	-2.04%	-4.19%	-13.84%	-31.38%	100.00%	456,043	1.25	1.11	-	10,400.93	Diverse	5.82%
▼ BVN PE**	US\$	7.10	-0.56%	-5.84%	-9.90%	-40.83%	100.00%	747,797	1.29	0.00	-	1,953.65	Mining	5.88%
▲ CASAGRC1 PE**	S/.	8.06	3.33%	-0.49%	24.38%	69.68%	84.21%	118,834	1.08	12.23	5.55	167.48	Agricultural	1.31%
▲ BBVAC1 PE**	S/.	1.85	2.21%	2.21%	-7.96%	-11.74%	94.74%	253,648	0.90	2.46	12.76	3,084.38	Finance	2.85%
▲ CORARE1 PE**	S/.	1.80	4.05%	4.65%	2.86%	102.25%	100.00%	115,472	0.94	15.31	2.75	545.70	Industrial	1.72%
▲ CPACASC1 PE**	S/.	4.85	0.41%	1.04%	-4.34%	-8.49%	94.74%	221,640	0.63	16.29	34.64	554.83	Industrial	2.38%
▲ CVERDEC1 PE**	US\$	39.79	15.00%	19.85%	61.75%	90.20%	100.00%	37,243,480	1.25	1.44	14.50	13,928.73	Mining	5.25%
- ENGEPEC1 PE**	S/.	2.23	0.00%	-0.45%	-3.88%	-5.91%	84.21%	1,895	0.69	0.00	9.71	1,317.84	Public Services	1.44%
- ENDISPC1**	S/.	4.27	0.00%	0.00%	-5.53%	-20.93%	73.68%	10,530	0.81	0.00	8.72	672.64	Public Services	0.98%
▲ FERREY1 PE**	S/.	1.88	1.62%	-2.08%	-2.08%	8.05%	100.00%	397,271	1.05	10.47	5.30	452.50	Diverse	4.90%
- AENZAC1 PE**	S/.	1.47	0.00%	3.52%	-7.55%	-15.52%	94.74%	211,344	1.00	0.00	-	316.19	Diverse	4.05%
▼ IFS PE**	US\$	23.80	-1.65%	-2.86%	-4.99%	-23.08%	94.74%	137,377	1.19	3.24	5.84	2,747.66	Diverse	7.22%
▼ INRETC1 PE**	US\$	33.80	-2.03%	-3.43%	-10.82%	-13.78%	84.21%	405,790	0.87	4.03	73.75	3,474.89	Diverse	5.28%
- LUSURC1 PE**	S/.	14.50	0.00%	1.40%	0.00%	-43.14%	84.21%	4,167	#N/A N/F	0.00	14.33	1,741.81	Public Services	1.81%
▲ MINSUR1 PE**	S/.	3.87	1.57%	8.40%	21.70%	109.19%	100.00%	14,055	0.95	17.77	2.95	2,752.35	Mining	3.09%
- PML PE**	US\$	0.14	0.00%	0.00%	2.19%	32.08%	84.21%	605	1.24	0.00	-	37.01	Mining	2.12%
- SCCO PE**	US\$	60.87	0.00%	2.80%	-1.55%	-7.63%	94.74%	19,967	0.89	0.00	14.48	47,057.46	Mining	2.14%
▲ SIDERC1 PE**	S/.	1.69	1.81%	8.33%	9.03%	56.77%	100.00%	21,577	0.87	20.95	4.03	291.83	Industrial	1.43%
- TV PE**	US\$	1.25	0.00%	12.61%	-21.88%	-14.97%	84.21%	6,875	1.27	0.00	-	123.64	Mining	2.93%
- UNACEM1 PE**	S/.	2.38	0.00%	14.42%	41.67%	53.55%	100.00%	718,047	1.01	2.77	9.96	1,067.46	Industrial	3.00%
▲ VOLCABC1 PE**	S/.	0.59	1.72%	1.72%	-11.94%	13.46%	100.00%	293,700	1.61	0.00	-	1,665.16	Mining	5.90%
- NEXAPEC1 PE**	S/.	3.56	0.00%	3.19%	3.49%	25.80%	78.95%	45,728	1.16	0.00	9.40	1,114.08	Mining	1.56%

Quantity of shares: 25
 Source: Bloomberg, Economatika
 * Bloomberg Industry Classification System
 ** PER is used in the stock market and original currency of the instrument
 *Legend: Variation 1D: 1 Day; 5D: 5 Days, 1M: 1 Month; YTD: Var.% 12/31/20 to date

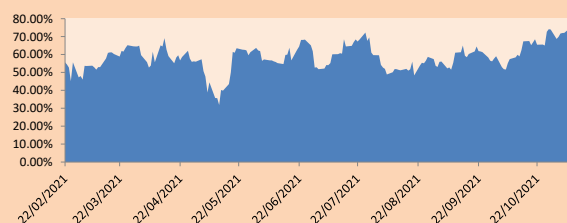
Sectorial Indices

	Close	1D*	5D*	30D*	YTD*	Beta
▲ S&P/BVLMining	411.64	1.19%	1.93%	1.79%	5.56%	0.76
▼ S&P/BVLConsumer	1,100.26	-1.37%	-0.81%	-5.99%	1.07%	0.85
▲ S&P/BVLIndustrials	254.89	0.64%	5.20%	9.88%	33.76%	0.89
▼ S&P/BVLFinancials	820.62	-1.97%	-4.59%	-11.87%	-20.63%	1.16
▲ S&P/BVLConstruction	286.98	0.33%	7.76%	14.35%	37.23%	0.78
- S&P/BVLPublicSvcs	562.98	0.00%	-1.34%	-3.94%	-8.32%	0.33
- S&P/BVLElectricUtil	549.61	0.00%	-1.34%	-3.94%	-8.32%	0.33

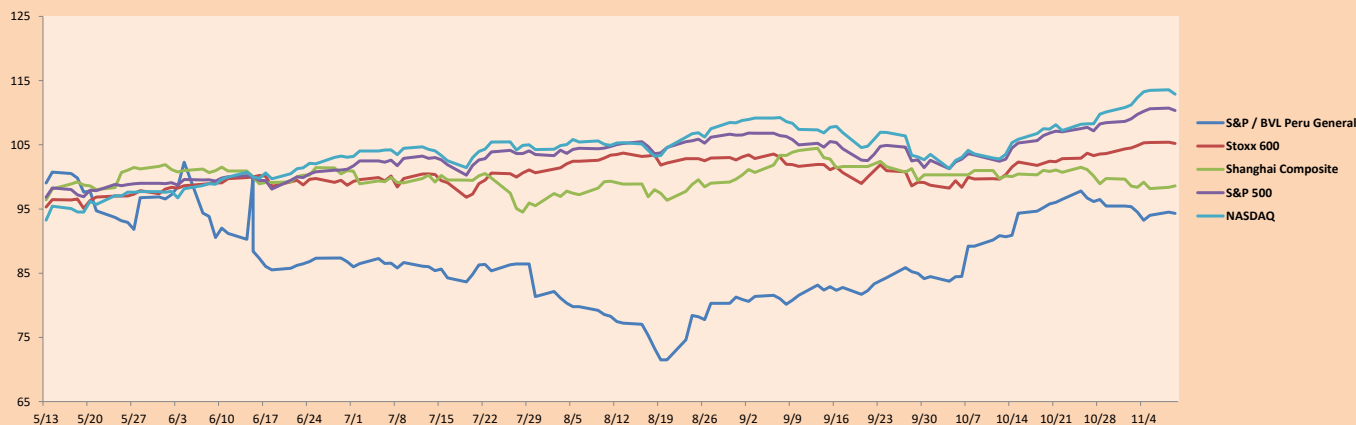
S&P/BVLConstructionTRPEN

*Legend: Variation 1D: 1 Day; 5D: 5 Days, 1M: 1 Month; YTD: Var.% 12/31/20 to date

Correlation Graph of Returns of Mining Index against Metallic Index of London (3 months)



Indices (6 months)



Base: 15/06/21=100
 Source: Bloomberg

Capital Market Laboratory Coordinator: Economist Bruno Bellido
 Collaboration: Alonso García, Ariam Loayza, Miguel Solimano y Jairo Valverde
 email: pulsobursatil@ulima.edu.pe
 facebook: www.facebook.com/pulsobursatil.ul

SOVEREIGN RATING

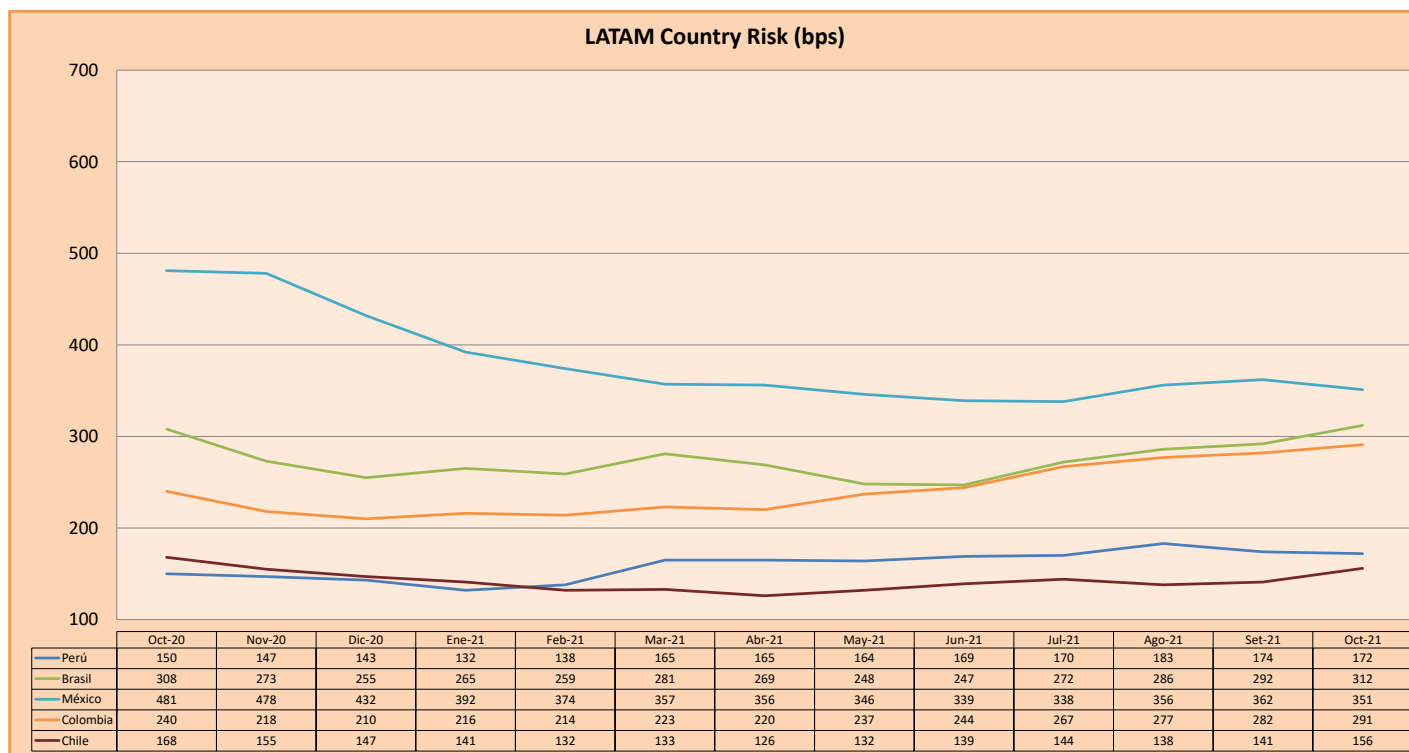
RISK RATINGS

Moody's	S&P	Fitch		
Aaa	AAA	AAA	Prime	
Aa1	AA+	AA+	High credit quality	
Aa2	AA	AA		
Aa3	AA-	AA-		
A1	A+	A+	Medium-high grade, with low credit risk	
A2	A	A		
A3	A-	A-		
Baa1	BBB+	BBB+	Moderate Credit Risk	
Baa2	BBB	BBB		
Baa3	BBB-	BBB-		
Ba1	BB+	BB+	It has speculative elements and it is subject to substantial credit risk	
Ba2	BB	BB		
Ba3	BB-	BB-		
B1	B+	B+	It is considered speculative and it has high credit risk	
B2	B	B		
B3	B-	B-		
Caa1	CCC+	CCC	Bad credit conditions and it is subject to high credit risk	
Caa2	CCC			
Caa3	CCC-			
Ca	C	DDD	Very close to default or in default	
C	D			DD
				D

Source: Bloomberg

Latin America Credit Rating			
Clasificadora de riesgo			
Country	Moody's	Fitch	S&P
Peru	Baa1	BBB	BBB+
México	Ba2	BB-	BB-
Venezuela	C	WD	NR
Brazil	Ba2	BB-	BB-
Colombia	Baa2	BB+	BB+
Chile	A1	A-	A
Argentine	Ca	WD	CCC+
Panama	Baa2	BBB-	BBB

Source: Bloomberg



Source: BCRP

Capital Market Laboratory Coordinator: Economist Bruno Bellido
Collaboration: Alonso García, Ariam Loayza, Miguel Solimano y Jairo Valverde
email: pulsobursatil@ulima.edu.pe
facebook: www.facebook.com/pulsobursatil.ul