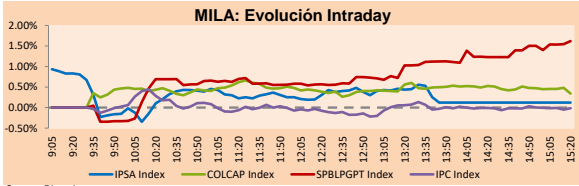


MILA

Lima, december 6, 2021

Main Indexes	Close	1 D	5 D	1 M	YTD	Cap. Burs. (US\$ bill)
▼ IPSA (Chile)	4,368.82	-0.01%	-3.04%	-0.44%	4.59%	96.97
▼ IGPA (Chile)	21,860.83	-0.07%	-3.22%	-0.81%	4.06%	115.58
▲ COLSC (Colombia)	930.44	0.54%	0.66%	-4.92%	-12.14%	4.23
▲ COLCAP (Colombia)	1,430.66	-0.09%	6.18%	3.03%	-0.50%	78.54
▲ S&P/BVL (Perú)*	20,353.53	1.77%	0.51%	-0.33%	-2.25%	91.17
▲ S&P/BVL SEL (Perú)	538.32	1.71%	0.00%	-1.01%	-2.37%	83.02
▲ S&P/BVL LIMA 25	28,804.62	1.63%	0.94%	1.08%	14.31%	89.98
▲ IPC (México)	50,605.56	0.02%	1.63%	-2.64%	14.84%	298.00
▲ S&P MILA 40	453.82	0.57%	0.95%	-2.40%	-15.12%	6,324.98

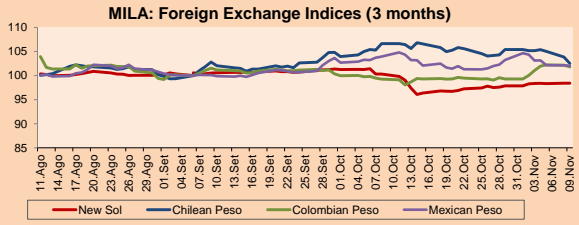
*Legend: Variation 1D: 1 day; 5D: 5 days; 1M: 1 Month; YTD: Var% 12/31/20 to date



Source: Bloomberg

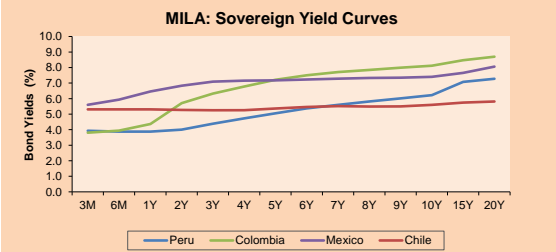
Currency	Price	1D*	5D*	30 D*	YTD*
▲ Sol (PEN)	4.0855	0.22%	0.60%	1.87%	12.92%
▲ Chilean Peso (CLP)	846.53	0.63%	0.48%	4.31%	18.93%
▼ Colombian Peso (COP)	3,932.17	-0.89%	-2.56%	1.37%	14.65%
▼ Mexican Peso (MXN)	21.22	-0.23%	-2.09%	4.33%	6.58%

*Legend: Variation 1D: 1 day; 5D: 5 days; 1M: 1 Month; YTD: Var% 12/31/20 to date



Base: 06/09/21=100
Source: Bloomberg

Fixed Income	Currency	Price	Bid Yield (%)	Ask Yield (%)	Duration
PERU 7.35 07/21/25	USD	119.833	1.75	1.61	3.19
PERU 4.125 08/25/27	USD	110.074	2.28	2.19	5.10
PERU 8.75 11/21/33	USD	155.685	3.16	3.10	8.46
PERU 6.55 03/14/37	USD	135.807	3.54	3.47	10.04
PERU 5.625 11/18/2050	USD	139.392	3.48	3.44	16.51
CHILE 2.25 10/30/22	USD	101.515	0.80	0.30	0.89
CHILE 3.125 01/21/26	USD	105.562	1.78	1.66	3.85
CHILE 3.625 10/30/42	USD	107.275	3.17	3.12	15.06
COLOM 11.85 03/09/28	USD	151.988	2.85	2.64	4.80
COLOM 10.375 01/28/33	USD	144.247	5.18	5.04	7.28
COLOM 7.375 09/18/37	USD	119.179	5.57	5.50	9.81
COLOM 6.125 01/18/41	USD	106.608	5.60	5.52	11.35
MEX 4 10/02/23	USD	106.608	5.596	5.521	11.35
MEX5.55 01/45	USD	120.13	4.21	4.16	13.80



Source: Bloomberg

Equity

Largest gains	Exchange	Currency	Price	▲%
FERREYCORP SAA	Peru	PEN	1.92	9.71
ENGIE ENERGIA CH	Chile	CLP	535.00	5.97
COLBUN SA	Chile	CLP	56.00	4.87
GRUPO TELEV-CPO	Mexico	MXN	42.66	4.15
BUENAVENTURA-ADR	Peru	USD	7.54	3.29

Per Turnover	Exchange	Amount (US\$)
WALMART DE MEXIC	Mexico	67,884,493
GRUPO F BANORT-O	Mexico	27,408,458
SOQUIMICH-B	Chile	25,610,882
AMERICA MOVIL-L	Mexico	21,146,188
GRUPO MEXICO-B	Mexico	20,655,604

Largest losses	Exchange	Currency	Price	▼%
CENCOSUD SA	Chile	CLP	1291	-2.93
FIBRA TERRA	Mexico	MXN	25.64	-2.25
GRUPO F BANORT-O	Mexico	MXN	130.14	-2.13
ENEL	Chile	CLP	2775.5	-1.82
FALABELLA SA	Chile	CLP	2749	-1.82

Per Volume	Exchange	Volume
ITAU CORPBANCA	Chile	1,338,599,464
ENEL CHILE SA	Chile	210,119,391
BANCO SANTANDER	Chile	49,933,871
COLBUN SA	Chile	48,396,643
ENEL AMERICAS SA	Chile	47,185,117

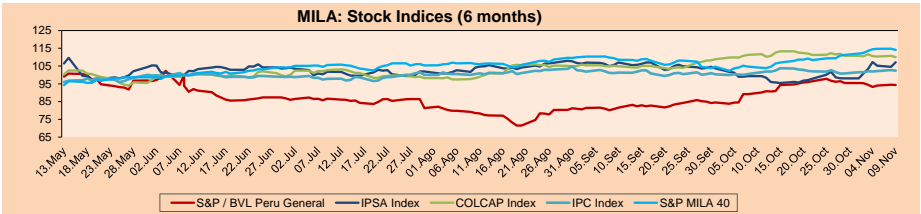
MILA

Peru: The General Index of the BVL ended today's session with a positive result of + 1.77%. The index maintains an annual accumulated negative trend of -2.25% in local currency, while the adjusted return in dollars amounts to -13.44%. Then, the S&P / BVL Peru SEL varied by + 1.71% while the S&P / BVL LIMA 25 by + 1.63%. The PEN spot reached S / J. 4.0855. Headline: MTC rejected LAP request that postponed Jorge Chávez expansion to 2035

Chile: The IPSA index ended the day with a negative return of -0.01%. The sectors that benefited the least from the session were Communication Services (-1.82%) and Non-Basic Consumer Products (-1.62%). The worst performing stocks were Cencosud SA (-2.93%) and Empresa Nacional de Telecomunicaciones (-1.82%). Headline: World Stock Exchanges Shake Fears of New Omicron Variant and Close Strongly

Colombia: The COLCAP index ended the day with a negative return of -0.09%. The most affected sectors of the day were Materials (-0.77%) and Finance (-0.73%). The worst performing stocks were Grupo Argos SA (-2.63%) and Corporación Financiera Colombiana (-2.09%). Headline: Colombian Coffee Production Falls 22% in November

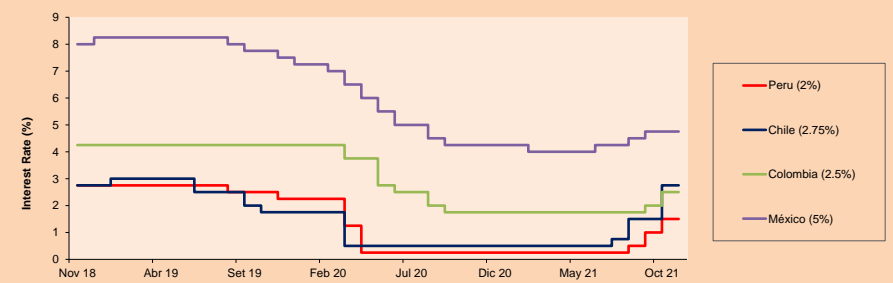
Mexico: The IPC index closed the day with a positive return of + 0.02%. The sectors that benefited the most from the session were Non-Basic Consumer Products (+ 1.08%) and Health (+ 0.95%). The best performing stocks were Grupo Televisa SAB (+ 4.15%) and Controladora Vuela (+ 3.34%) Headline: Failure of welfare gas! "Not even close" is competition, says Cofece



Base: 13/05/21=100
Source: Bloomberg

ETFs	Curr.	Close	1D	5D	30 D	YTD	Exchange
▲ iShares MSCI All Peru Caped Index Fund	USD	28.3	1.51%	-0.04%	-3.58%	-18.40%	NYSE Arca
▲ iShares MSCI All Chile Caped Index Fund	USD	25.08	1.17%	-2.03%	-5.22%	-16.98%	Cboe BZX
▲ Global X MSCI Colombia	USD	10.4378	0.51%	6.98%	-1.20%	-8.12%	NYSE Arca
▼ iShares MSCI Mexico Capped	USD	46.6	-0.21%	4.32%	-6.18%	8.40%	NYSE Arca
▲ iShares MSCI Emerging Markets	USD	49.3	0.78%	0.84%	-3.18%	-4.59%	NYSE Arca
▲ Vanguard FTSE Emerging Markets	USD	49.37	0.65%	0.53%	-2.99%	-1.48%	NYSE Arca
▲ iShares Core MSCI Emerging Markets	USD	60.68	0.78%	0.97%	-2.97%	-2.19%	NYSE Arca
▲ iShares JP Morgan Emerging Markets Bonds	USD	62.35	0.19%	0.63%	-1.64%	2.08%	Cboe BZX
▲ Morgan Stanley Emerging Markets Domestic	USD	5.55	0.18%	-2.63%	-4.31%	-11.76%	New York

MILA: Policy Rate



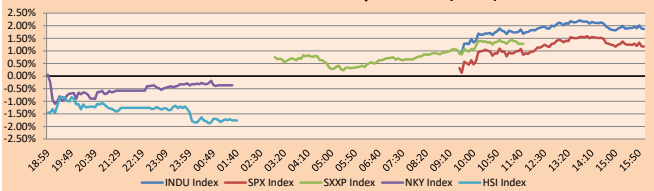
Source: Bloomberg

WORLD

Main Indices	Close	1 D*	5 D*	1 M*	YTD*	Market Cap. (US\$ Mill.)
▲ Dow Jones (USA)	36,227.03	1.87%	0.26%	-3.03%	15.10%	11,151,844
▲ Standard & Poor's 500 (EEUU)	4,591.67	1.17%	-1.37%	-2.25%	22.25%	40,045,306
▲ NASDAQ Composite (USA)	15,225.15	0.93%	-3.53%	-4.87%	18.13%	25,656,583
▲ Stoxx EUROPE 600 (Europe)	468.71	1.28%	0.31%	-3.05%	17.46%	11,544,706
▲ DAX (Germany)	15,380.79	1.39%	0.65%	-4.20%	12.11%	1,466,138
▲ FTSE 100 (United Kingdom)	7,232.28	1.54%	1.72%	-0.98%	11.95%	1,566,445
▲ CAC 40 (France)	6,865.78	1.48%	1.32%	-2.49%	23.68%	2,020,872
▲ IBEX 35 (Spain)	8,439.70	2.40%	-0.18%	-7.57%	-4.53%	501,153
▼ MSCI AC Asia Pacific Index	188.95	-0.86%	-0.82%	-4.32%	-4.99%	25,661,470
▼ HANG SENG (Hong Kong)	23,349.38	-1.76%	-2.11%	-6.12%	-14.25%	3,837,577
▼ SHANGHAI SE Comp. (China)	3,589.31	-0.50%	0.75%	2.80%	3.35%	7,374,283
▼ NIKKEI 225 (Japan)	27,927.37	-0.36%	-1.26%	-5.69%	1.76%	4,051,260
▲ S&P/ASX 200 (Australia)	7,245.07	0.05%	0.07%	-2.14%	10.79%	1,637,601
▲ KOSPI (South Korea)	2,973.25	0.02%	1.63%	0.13%	3.47%	1,789,192

*Legend: Variation 1D: 1 Day; 5D: 5 Days; 1M: 1 Month; YTD: Var.% 12/31/20 to date

Global Markets: Intraday Evolution (var %)

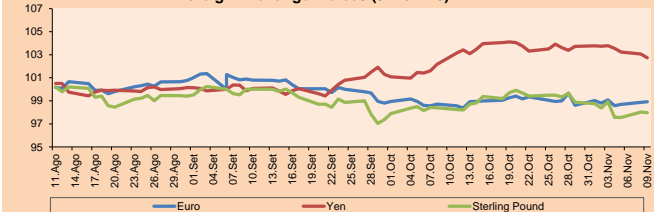


Source: Bloomberg

Currency	Price	1 D*	5 D*	1 M*	YTD*
▼ Euro	1.1285	-0.27%	-0.05%	-2.44%	-7.62%
▲ Yen	113.4800	0.60%	-0.04%	0.06%	9.91%
▲ Sterling Pound	1.3264	0.21%	-0.38%	-1.73%	-2.97%
▼ Yuan	6.3763	0.00%	-0.19%	-0.35%	-2.31%
▼ Hong Kong Dollar	7.8005	0.07%	0.01%	0.23%	0.61%
▲ Brazilian Real	5.6860	0.59%	1.39%	2.59%	9.38%
▲ Argentine Peso	101.2950	0.13%	0.36%	1.35%	20.38%

*Legend: Variation 1D: 1 Day; 5D: 5 Days; 1M: 1 Month; YTD: Var.% 12/31/20 to date

Foreign Exchange Indices (3 months)

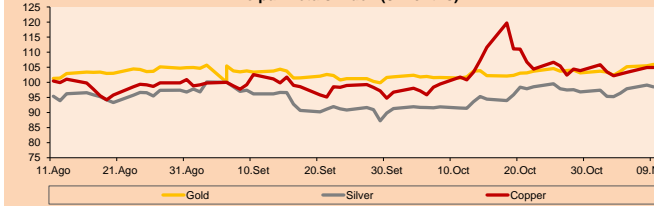


Base: 06/09/21=100
Source: Bloomberg

Commodities	Close	1 D*	5 D*	1 M*	YTD*
▼ Oro (US\$ Oz. T) (LME)	1,778.67	-0.26%	-0.33%	-2.18%	-6.30%
▼ Plata (US\$ Oz. T) (LME)	22.39	-0.61%	-2.26%	-7.34%	-15.21%
- Cobre (US\$ TM) (LME)	9,486.00	0.00%	-1.83%	-2.74%	22.42%
- Zinc (US\$ TM) (LME)	3,240.25	0.00%	-1.88%	-0.83%	18.72%
▲ Petróleo WTI (US\$ Barril) (NYM)	69.49	4.87%	-0.66%	-13.28%	46.33%
- Estarño (US\$ TM) (LME)	39,910.00	0.00%	-0.30%	4.72%	94.26%
- Plomo (US\$ TM) (LME)	2,226.00	0.00%	-3.57%	-6.14%	12.67%
▲ Azúcar #11 (US\$ Libra) (NYB-ICE)	19.16	2.19%	-0.16%	-3.91%	34.27%
▲ Cacao (US\$ TM) (NYB-ICE)	2,460.00	-0.28%	3.45%	0.49%	-1.20%
▼ Café Arábica (US\$ TM) (NYB-ICE)	249.85	2.67%	7.23%	21.05%	83.38%

*Legend: Variación 1D: 1 Día; 5D: 5 Días; 1M: 1 Mes; YTD: Var.% 31/12/20 a la fecha

Principal Metals Index (3 months)



Base: 06/09/21=100
Source: Bloomberg

Equity

Germany (Stocks from DAX Index)					
Largest gains	Curr.	Price	▲ %	Exchange	
AIR GY	EUR	102.7	4.22	Xetra	
DBK GY	EUR	111.74	4.02	Xetra	
FME GY	EUR	55.76	3.41	Xetra	
FRE GY	EUR	34.48	3.08	Xetra	

Europe (Stocks from STOXX EUROPE 600)					
Largest gains	Curr.	Price	▲ %	Exchange	
ING LN	Gbp	142.34	8.08	London	
LHA GY	EUR	6.09	7.09	Xetra	
URW NA	EUR	61.96	6.57	EN Amsterdam	
OCL LN	Gbp	1286.8	6.56	London	

Largest losses					
	Curr.	Price	▼ %	Exchange	
DHER GY	EUR	99.8	-2.59	Xetra	
DAI GY	EUR	85.47	-0.19	Xetra	
DPW GY	EUR	51.91	-0.13	Xetra	
DB1 GY	EUR	138.05	0.29	Xetra	

Largest losses					
	Curr.	Price	▼ %	Exchange	
AZA SS	SEK	321.7	-5.05	Stockholm	
ALE PW	PLN	34.725	-4.98	Warsaw	
DIM FP	EUR	456.4	-4.88	EN Paris	
BESI NA	EUR	75.02	-4.70	EN Amsterdam	

Global Overview:

United States:

Major US indexes closed the day positively after some recovery in the travel sector following upbeat comments from a senior US official on the Omicron variant. In this way, all the indices ended up on the rise, the Dow being the one that rose the most. Likewise, the energy and industrial sectors were the strongest in the S & P500. On the other hand, companies dedicated to COVID-19 vaccines fell, weighing down the health sector. Investors, however, were reassured by Dr. Anthony Fauci, America's chief infectious disease official, who said there does not appear to be a great deal of severity with this new variant. On the other hand, China's central bank would cut the amount of cash that banks must keep in reserve, to boost and invigorate the Chinese economy. Finally, Goldman Sachs downgraded the outlook for US economic growth as stock markets have been swinging sharply since the emergence and concern about this new variant of the coronavirus and the reduction in bond purchases announced by the Fed's president Jerome Powell. Thus, DOW JONES + 1.87%; S&P 500 + 1.17%; NASDAQ + 0.93% ended the day higher.

Europe:

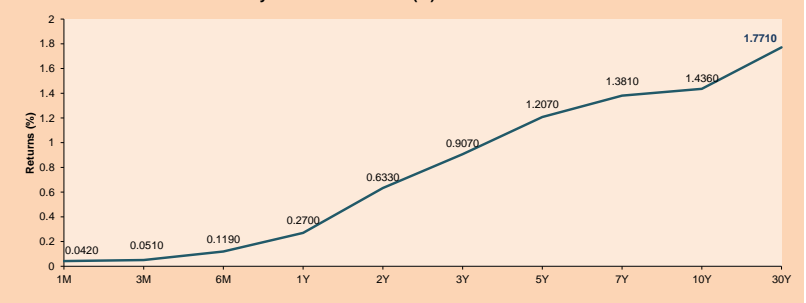
The main European indices ended the session with positive returns, due to good performances as a result of a recovery in technology companies. Nevertheless, investors remained fearful due to the uncertainty surrounding the Omicron variant. The pan-European STOXX 600 index closed +1.28%; due to an increase in the Energy sector +1.92% on a recovery of oil prices, after their fall days before. The British market ended higher, as the pharmaceutical company AstraZeneca stated that it is analyzing the possibility of listing a new vaccine division. Likewise, the Confederation of British Industry reduced the growth forecast of the UK economy for 2022 due to difficulties in the global supply chain. On the other hand, the German DAX index ended with positive performances, despite the fact that German factory orders fell more than expected in October due to a reduction in demand for investment goods. Similarly, France's CAC40 closed higher, after Emmanuel Macron's chances of re-election for president of France reached 70.2%, well ahead of its main competitors. Thus, FTSE 100 +1.54%; CAC 40 +1.48%; DAX +1.39%; STOXX 600 +1.28% ended with positive returns.

Asia:

Major Asian indices closed with mostly negative returns as the omicron variant spread to more countries and increased investor caution ahead of U.S. inflation data. The Chinese market closed lower as shares of China Evergrande Group plunged to an 11-year low after it said it had no guarantee that it had sufficient funds to meet debt payments. The South Korean market closed in negative territory on concerns generated by the 24 confirmed cases of Omicron in total so far in the country. Meanwhile, the Hang Seng Index ended lower on the back of technology companies, which followed Wall Street's losses and plunged 2.7% following Didi Global Inc.'s decision to delist from the New York Stock Exchange. Japan's NIKKEI, on the other hand, was dragged down by a drop in SoftBank Group, while risk aversion generated by the omicron variant persisted. SoftBank Group plunged 7.11% due to concerns about the valuations of the portfolios in which they have invested. The Australian market ended slightly higher following upbeat comments from the Treasurer on the economic outlook for 2022, easing some concerns around the omicron variant. Thus, NIKKEI -0.36%; HANG SENG -1.76%; CSI 300 -0.17%; S&P/ASX 200 +0.05%; KOSPI +0.17%; SHANGAI COMPOSITE -0.50% ended with negative returns.

ETFs	Curr.	Close	1D	5D	30 D	YTD	Exchange
SPDR S&P 500 ETF TRUST	USD	458.79	1.18%	-1.25%	-2.08%	22.71%	NYSE Arca
ISHARES MSCI EMERGING MARKET	USD	49.30	0.78%	0.84%	-3.18%	-4.59%	NYSE Arca
ISHARES IBOXX HIGH YLD CORP	USD	86.38	0.44%	0.44%	-1.28%	-1.05%	NYSE Arca
FINANCIAL SELECT SECTOR SPDR	USD	38.61	1.53%	-0.72%	-3.52%	30.97%	NYSE Arca
VANECK GOLD MINERS ETF	USD	31.12	1.40%	-3.14%	-4.98%	-13.60%	NYSE Arca
ISHARES RUSSELL 2000 ETF	USD	219.02	2.01%	-1.66%	-9.42%	11.71%	NYSE Arca
SPDR GOLD SHARES	USD	166.22	-0.25%	-0.24%	-2.13%	-6.81%	NYSE Arca
ISHARES 20+ YEAR TREASURY BO	USD	152.23	-1.37%	1.95%	1.96%	-3.49%	NASDAQ GM
INVESCO QQQ TRUST SERIES 1	USD	386.20	0.80%	-3.38%	-3.11%	23.10%	NASDAQ GM
ISHARES BIOTECHNOLOGY ETF	USD	145.27	-2.10%	-6.91%	-7.44%	-4.11%	NASDAQ GM
ENERGY SELECT SECTOR SPDR	USD	55.96	1.49%	0.11%	-3.95%	47.65%	NYSE Arca
PROSHARES ULTRA VIX ST FUTUR	USD	20.73	-11.79%	23.10%	31.62%	-80.54%	Cboe BZX
UNITED STATES OIL FUND LP	USD	50.51	5.23%	0.68%	-10.68%	53.01%	NYSE Arca
ISHARES MSCI BRAZIL ETF	USD	30.20	1.44%	2.93%	0.83%	-18.53%	NYSE Arca
SPDR S&P OIL & GAS EXP & PR	USD	98.05	3.07%	-1.98%	-10.63%	67.61%	NYSE Arca
UTILITIES SELECT SECTOR SPDR	USD	68.43	1.53%	1.00%	1.80%	9.14%	NYSE Arca
ISHARES US REAL ESTATE ETF	USD	110.00	1.61%	0.54%	-0.22%	28.43%	NYSE Arca
SPDR S&P BIOTECH ETF	USD	109.58	0.05%	-4.75%	-16.55%	-22.16%	NYSE Arca
ISHARES IBOXX INVESTMENT GRA	USD	133.58	-0.51%	0.61%	-0.93%	-3.29%	NYSE Arca
ISHARES JP MORGAN US EMERGI	USD	108.74	0.09%	1.16%	-1.88%	-6.19%	NASDAQ GM
REAL ESTATE SELECT SECT SPDR	USD	48.50	1.44%	0.21%	0.58%	32.66%	NYSE Arca
ISHARES CHINA LARGE-CAP ETF	USD	38.18	1.89%	-0.57%	-2.95%	-17.77%	NYSE Arca
CONSUMER STAPLES SPDR	USD	72.83	1.76%	0.96%	-0.23%	7.98%	NYSE Arca
VANECK JUNIOR GOLD MINERS	USD	41.06	1.16%	-4.71%	-8.25%	-24.30%	NYSE Arca
SPDR BLOOMBERG HIGH YIELD BO	USD	107.68	0.37%	0.34%	-1.48%	-1.16%	NYSE Arca
VANGUARD REAL ESTATE ETF	USD	109.66	1.75%	0.79%	-0.29%	29.12%	NYSE Arca
GRAYSCALE BITCOIN TRUST BTC	USD	38.40	-8.24%	-18.61%	-20.94%	20.00%	OTC US

USA Treasury Bonds Yield Curve (%)



Source: Bloomberg

LIMA

Stocks

Ticker	Currency	Price	1D*	5D*	30D*	YTD*	Frequency	Volume (US\$)	Beta	Dividend Yield (%)	Price Earning	Market Cap. (M US\$)	Economic Sector*	Index Weight
▲ ALICORC1 PE**	S/.	5.55	0.54%	0.66%	-4.92%	-12.14%	100.00%	705,087	0.79	15.05	11.42	1,158.84	Industrial	3.53%
- ATACOCB1 PE**	S/.	0.14	0.00%	0.00%	-1.43%	0.00%	89.47%	570	1.11	0.00	-	31.91	Mining	1.02%
- BACKUSI1 PE**	S/.	20.90	0.00%	7.73%	4.55%	3.72%	100.00%	56,084	0.72	4.47	7.71	6,842.08	Industrial	0.82%
▲ BAP PE**	US\$	115.02	1.47%	-3.11%	-9.74%	-28.38%	100.00%	879,433	1.25	1.06	-	10,855.85	Diverse	5.82%
▲ BVN PE**	US\$	7.54	3.29%	7.41%	3.29%	-37.17%	100.00%	674,957	1.26	0.00	-	2,074.72	Mining	5.88%
- CASAGRC1 PE**	S/.	8.10	0.00%	9.46%	30.43%	70.53%	84.21%	612	1.12	0.00	5.57	167.01	Agricultural	1.31%
▼ BBVAC1 PE**	S/.	1.81	-0.55%	-5.73%	-10.40%	-13.65%	94.74%	62,713	0.93	2.51	12.48	2,994.20	Finance	2.85%
- CORAREI1 PE**	S/.	1.72	0.00%	-4.44%	12.42%	93.26%	100.00%	110,731	0.92	16.02	2.62	514.82	Industrial	1.72%
▲ CPACASC1 PE**	S/.	4.80	0.21%	-7.51%	-2.04%	-9.43%	94.74%	160,156	0.55	16.46	34.29	545.32	Industrial	2.38%
▲ CVERDEC1 PE**	US\$	33.20	0.30%	18.53%	50.91%	58.70%	100.00%	1,679,642	1.21	1.72	12.10	11,621.86	Mining	5.25%
▲ ENGEPEC1 PE**	S/.	2.24	0.45%	-3.45%	1.82%	-5.49%	84.21%	4,915	0.69	13.88	9.75	1,313.44	Public Services	1.44%
- ENDISPC1**	S/.	4.27	0.00%	-0.23%	-2.73%	-20.93%	73.68%	1,264	0.81	0.00	8.72	667.40	Public Services	0.98%
▲ FERREY1 PE**	S/.	1.92	9.71%	3.23%	1.05%	10.34%	100.00%	2,524,088	0.98	10.25	5.41	458.53	Diverse	4.90%
▲ AENZAC1 PE**	S/.	1.42	9.23%	4.41%	-8.39%	-18.39%	94.74%	79,671	0.88	0.00	-	303.05	Diverse	4.05%
▲ IFS PE**	US\$	24.50	1.66%	-7.27%	-9.93%	-20.81%	94.74%	79,815	1.20	3.14	6.07	2,828.47	Diverse	7.22%
▲ INRETC1 PE**	US\$	35.00	1.45%	0.00%	-6.67%	-10.71%	84.21%	114,625	0.83	3.89	77.12	3,598.26	Diverse	5.28%
- LUSURC1 PE**	S/.	14.30	0.00%	2.07%	2.88%	-43.92%	84.21%	7,410	#N/A N/F	7.27	14.13	1,704.42	Public Services	1.81%
▼ MINSUR1 PE**	S/.	3.57	-0.56%	-6.05%	11.56%	92.97%	100.00%	8,868	0.95	19.26	2.70	2,519.23	Mining	3.09%
- PML PE**	US\$	0.14	0.00%	0.00%	-1.41%	32.08%	84.21%	4,377	1.24	0.00	-	37.01	Mining	2.12%
▲ SCCO PE**	US\$	59.21	2.96%	-0.32%	0.73%	-10.15%	94.74%	2,961	0.89	5.40	14.08	45,774.14	Mining	2.14%
▼ SIDERC1 PE**	S/.	1.56	-1.27%	-5.45%	3.31%	44.71%	100.00%	19,777	0.87	22.69	3.72	267.29	Industrial	1.43%
▼ TV PE**	US\$	1.11	-2.63%	-15.27%	-34.71%	-24.49%	84.21%	17,692	1.26	0.00	-	109.79	Mining	2.93%
▲ UNACEM1 PE**	S/.	2.08	3.48%	10.64%	23.81%	34.19%	100.00%	159,109	0.99	3.17	8.70	925.64	Industrial	3.00%
- VOLCABC1 PE**	S/.	0.58	0.00%	0.00%	-14.71%	11.54%	100.00%	64,731	1.55	0.00	-	578.73	Mining	5.90%
- NEXAPEC1 PE**	S/.	3.45	0.00%	-0.58%	1.47%	21.91%	78.95%	2,956	1.16	0.00	9.02	1,071.55	Mining	1.56%

Quantity of shares: 25
Source: Bloomberg, Económica
* Bloomberg Industry Classification System
** PER is used in the stock market and original currency of the instrument
*Legend: Variation 1D: 1 Day; 5D: 5 Days, 1M: 1 Month; YTD: Var.% 12/31/20 to date

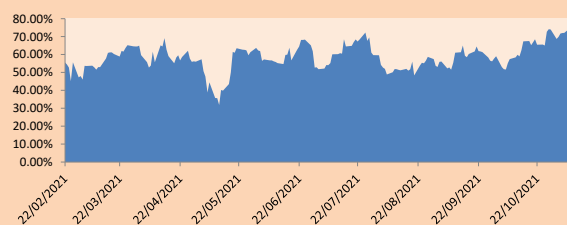
Sectorial Indices

	Close	1D*	5D*	30D*	YTD*	Beta
▲ S&P/BVLMining	403.84	2.50%	2.97%	6.14%	3.56%	0.78
▲ S&P/BVLConsumer	1,109.24	0.47%	-1.75%	-4.81%	1.89%	0.85
▲ S&P/BVLIndustrials	242.30	4.43%	1.94%	7.06%	27.15%	0.90
▲ S&P/BVLFinancials	860.10	1.52%	-3.05%	-8.03%	-16.81%	1.16
▲ S&P/BVLConstruction	266.31	2.69%	1.49%	9.35%	27.35%	0.80
▲ S&P/BVLPublicSvcs	570.64	0.14%	-1.09%	0.28%	-7.08%	0.34
▲ S&P/BVLElectricUtil	557.09	0.14%	-1.09%	0.28%	-7.08%	0.34

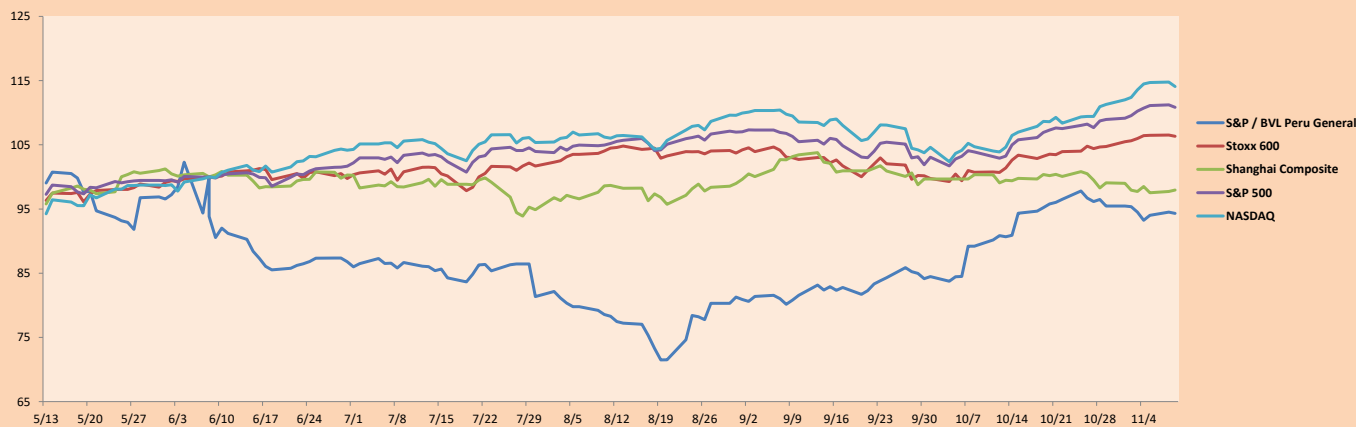
S&P/BVLConstructionTRPEN

*Legend: Variation 1D: 1 Day; 5D: 5 Days, 1M: 1 Month; YTD: Var.% 12/31/20 to date

Correlation Graph of Returns of Mining Index against Metallic Index of London (3 months)



Indices (6 months)



Base: 08/06/21=100
Source: Bloomberg

Capital Market Laboratory Coordinator: Economist Bruno Bellido
Collaboration: Alonso García, Ariam Loayza, Miguel Solimano y Jairo Valverde
email: pulsohorsatil@ulima.edu.pe
facebook: www.facebook.com/pulsohorsatil.ul

SOVEREIGN RATING

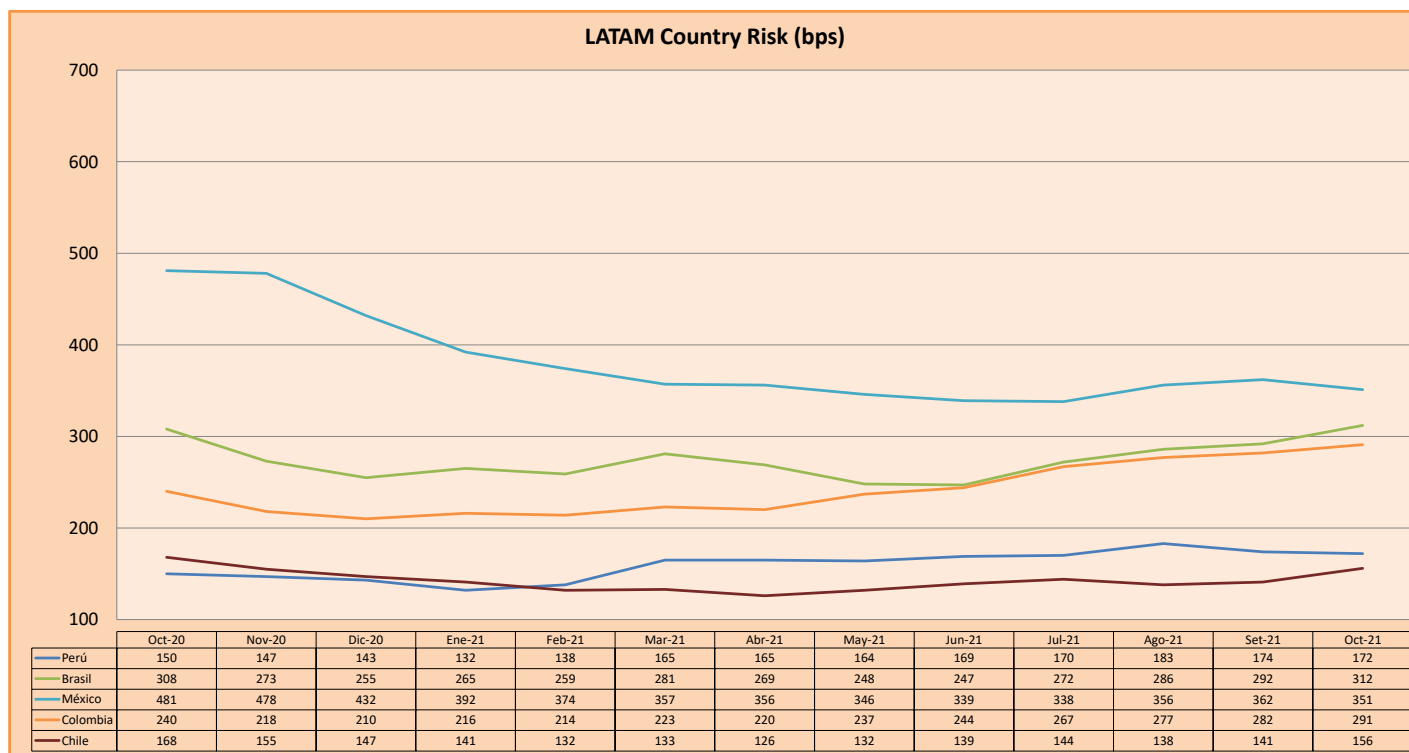
RISK RATINGS

Moody's	S&P	Fitch		
Aaa	AAA	AAA	Prime	
Aa1	AA+	AA+	High credit quality	
Aa2	AA	AA		
Aa3	AA-	AA-		
A1	A+	A+	Medium-high grade, with low credit risk	
A2	A	A		
A3	A-	A-		
Baa1	BBB+	BBB+	Moderate Credit Risk	
Baa2	BBB	BBB		
Baa3	BBB-	BBB-		
Ba1	BB+	BB+	It has speculative elements and it is subject to substantial credit risk	
Ba2	BB	BB		
Ba3	BB-	BB-		
B1	B+	B+	It is considered speculative and it has high credit risk	
B2	B	B		
B3	B-	B-		
Caa1	CCC+	CCC	Bad credit conditions and it is subject to high credit risk	
Caa2	CCC			
Caa3	CCC-			
Ca	C	DDD	Very close to default or in default	
C	D			DD
				D

Source: Bloomberg

Latin America Credit Rating			
Clasificadora de riesgo			
Country	Moody's	Fitch	S&P
Peru	Baa1	BBB	BBB+
México	Ba2	BB-	BB-
Venezuela	C	WD	NR
Brazil	Ba2	BB-	BB-
Colombia	Baa2	BB+	BB+
Chile	A1	A-	A
Argentina	Ca	WD	CCC+
Panama	Baa2	BBB-	BBB

Source: Bloomberg



Source: BCRP

Capital Market Laboratory Coordinator: Economist Bruno Bellido
Collaboration: Alonso García, Ariam Loayza, Miguel Solimano y Jairo Valverde
email: pulsobursatil@ulima.edu.pe
facebook: www.facebook.com/pulsobursatil.ul