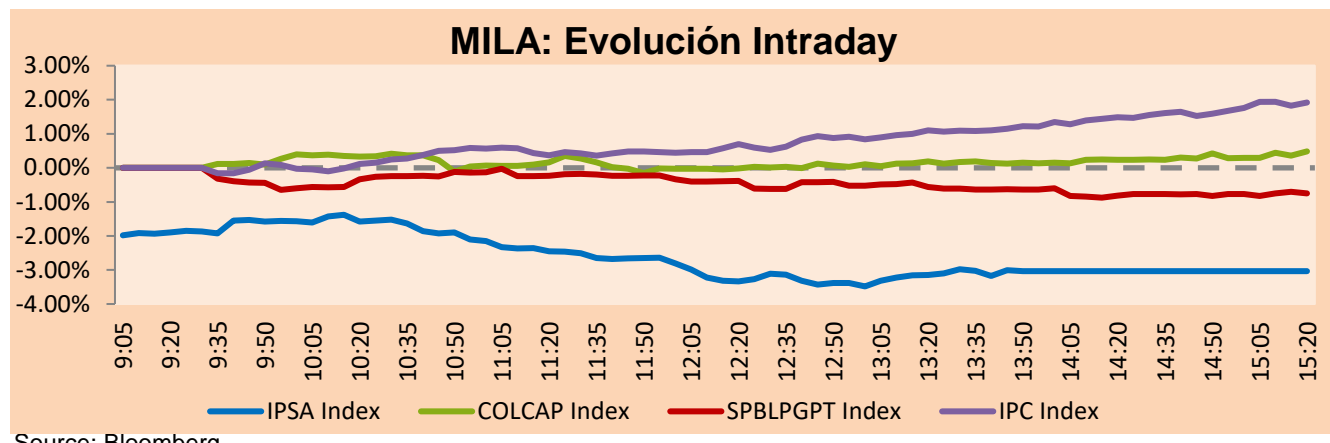


## MILA

Lima, december 14, 2021

Main Indexes	Close	1 D	5 D	1 M	YTD	Cap. Burs. (US\$ bill)
▼ IPSA (Chile)	4,179.56	-2.83%	-4.33%	-6.83%	0.06%	95.74
▼ IGPA (Chile)	20,955.23	-2.74%	-4.14%	-6.81%	-0.25%	114.23
▲ COLSC (Colombia)	948.37	0.71%	1.93%	-2.07%	-10.45%	4.21
▲ COLCAP (Colombia)	1,358.80	0.36%	-5.02%	0.17%	-5.50%	74.45
▲ S&P/BVL (Perú)*	20,117.40	-0.87%	-1.16%	-3.26%	-3.38%	96.59
▼ S&P/BVL SEL (Perú)	535.22	-0.60%	-0.58%	-1.78%	-2.94%	86.52
▼ S&P/BVL LIMA 25	29,280.58	-0.74%	1.65%	1.00%	16.20%	95.37
▲ IPC (México)	51,241.47	1.63%	0.63%	-0.37%	16.28%	299.23
▼ S&P MILA 40	432.27	-2.49%	-4.75%	-8.49%	-19.15%	6,353.97

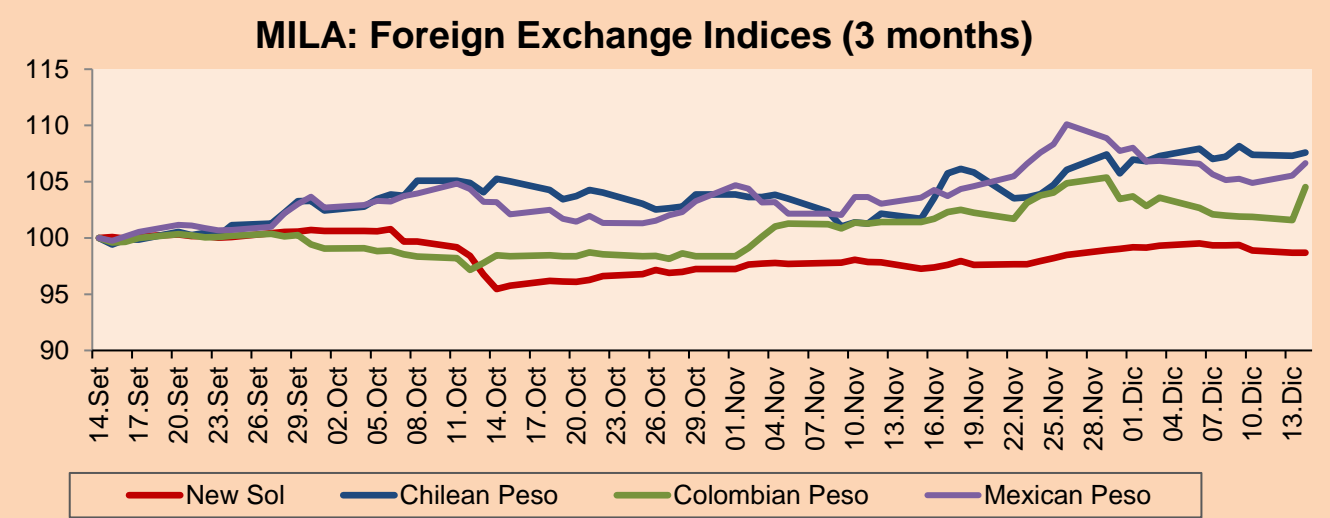
\*Legend: Variation 1D: 1 day; 5D: 5 days; 1M: 1 Month; YTD: Var% 12/31/20 to date



Source: Bloomberg

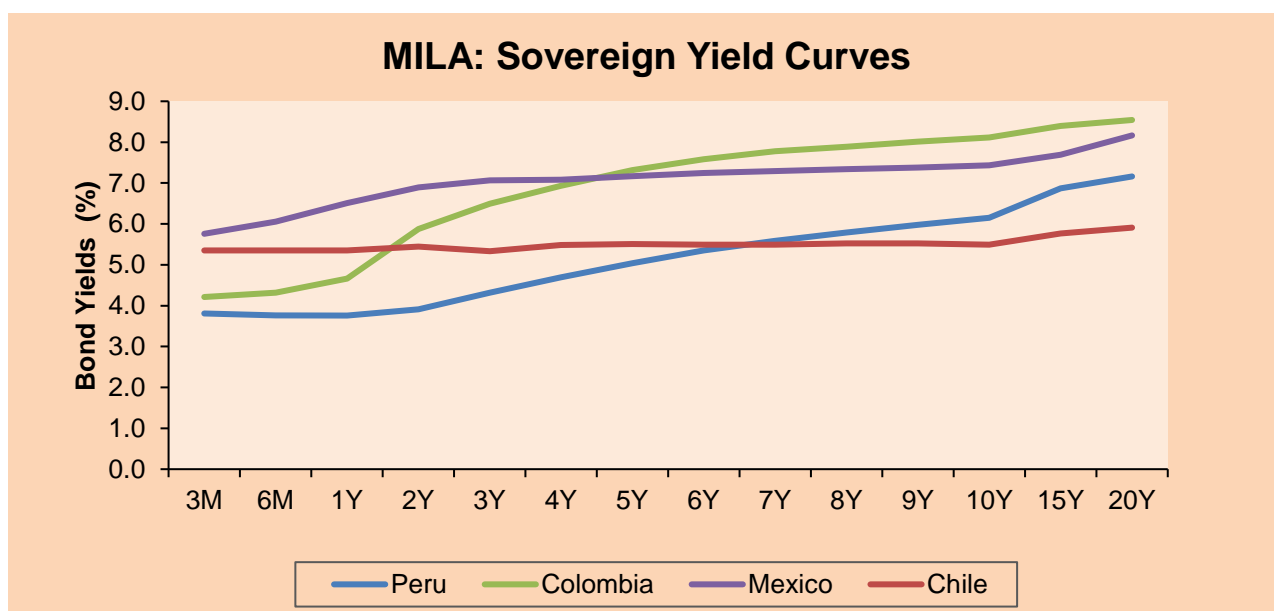
Currency	Price	1D*	5D*	30 D*	YTD*
▼ Sol (PEN)	4.0535	0.00%	-0.61%	0.87%	12.04%
▲ Chilean Peso (CLP)	843.70	0.25%	0.53%	5.32%	18.53%
▲ Colombian Peso (COP)	4,003.09	2.89%	2.36%	3.05%	16.72%
▲ Mexican Peso (MXN)	21.23	1.03%	0.94%	3.49%	6.63%

\*Legend: Variation 1D: 1 day; 5D: 5 days; 1M: 1 Month; YTD: Var% 12/31/20 to date



Base: 14/09/21=100  
Source: Bloomberg

Fixed Income	Currency	Price	Bid Yield (%)	Ask Yield (%)	Duration
PERU 7.35 07/21/25	USD	119.677	1.76	1.62	3.17
PERU 4.125 08/25/27	USD	110.467	2.21	2.12	5.08
PERU 8.75 11/21/33	USD	156.537	3.09	3.03	8.45
PERU 6.55 03/14/37	USD	137.123	3.43	3.38	10.04
PERU 5.625 11/18/2050	USD	141.685	3.37	3.35	16.65
CHILE 2.25 10/30/22	USD	101.468	0.80	0.32	0.86
CHILE 3.125 01/21/26	USD	105.612	1.76	1.64	3.83
CHILE 3.625 10/30/42	USD	107.515	3.15	3.11	15.04
COLOM 11.85 03/09/28	USD	152.283	2.75	2.61	4.78
COLOM 10.375 01/28/33	USD	144.368	5.13	5.06	7.25
COLOM 7.375 09/18/37	USD	118.114	5.65	5.60	9.76
COLOM 6.125 01/18/41	USD	105.398	5.69	5.63	11.28
MEX 4 10/02/23	USD	105.398	5.691	5.626	11.28
MEX5.55 01/45	USD	120.379	4.19	4.15	13.80



Source: Bloomberg

### Equity

Largest gains	Exchange	Currency	Price	▲%	Largest losses	Exchange	Currency	Price	▼%
FOMENTO ECON-UBD	Mexico	MXN	153.00	4.41	CAP	Chile	CLP	7240	-7.42
TRUST FIBRA UNO	Mexico	MXN	20.85	3.89	PARQUE ARAUCO	Chile	CLP	730	-5.93
GRUPO NUTRESA SA	Colombia	COP	28400.00	3.80	BANCO SANTANDER	Chile	CLP	34.5	-5.06
GRUPO BIMBO-A	Mexico	MXN	58.78	3.43	COLBUN SA	Chile	CLP	57	-4.84
CEMEX SAB-CPO	Mexico	MXN	13.08	3.32	SONDA SA	Chile	CLP	243.58	-4.09

Per Turnover	Exchange	Amount (US\$)	Per Volume	Exchange	Volume
WALMART DE MEXIC	Mexico	67,326,376	ITAU CORPBANCA	Chile	476,666,784
CEMEX SAB-CPO	Mexico	52,986,187	BANCO SANTANDER	Chile	171,754,221
GRUPO F BANORT-O	Mexico	49,983,753	BANCO DE CHILE	Chile	126,113,210
AMERICA MOVIL-L	Mexico	38,870,628	CEMEX SAB-CPO	Mexico	86,697,795
SOQUIMICH-B	Chile	34,044,163	ENEL CHILE SA	Chile	73,113,964

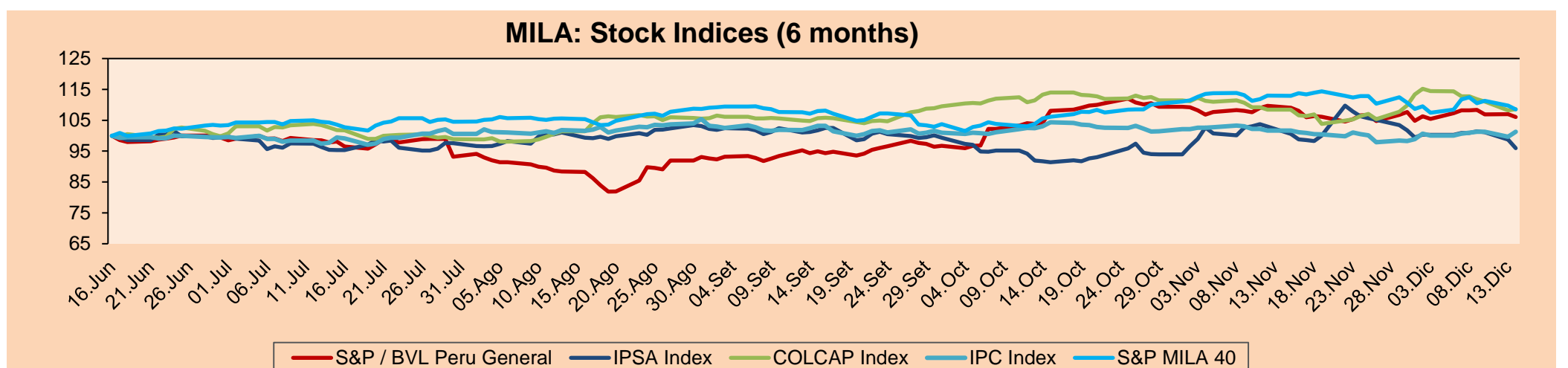
### MILA

Peru: The General Index ended today's session with a negative result of -0.87%. The index maintains an annual cumulative negative trend of -3.38% in local currency, while the adjusted return in dollars amounts to -13.76%. Then, the S&P / BVL Peru SEL changed by -0.60% while the S&P / BVL LIMA 25 by -0.74%. The PEN spot reached S/. 4.0535. Headline: Dollar closes with slight increase after announcement of Cerro Lindo's suspension of operations closure

Chile: The IPSA index ended the day with a negative return of -2.83%. The sectors that lost the most from the session were Industrial (-4.25%) and Information Technology (-4.09%). The worst performing stocks were Cap SA (-7.42%) and PARQUE ARAUCO S.A. (-5.93%). Headline: Chilean stock market loses all its gains after the first round and Wall Street falls due to inflation in the U.S.

Colombia: The COLCAP index closed today with a positive return of +0.36%. The sectors that benefited the most from the session were Consumer Staples (+3.80%) and Financials (+0.65%). The best performing stocks were GRUPO NUTRESA S.A. (+3.80%) and BANCOLOMBIA S.A. (+1.97%). Headline: Financial monitoring committee says portfolio growing and recovering

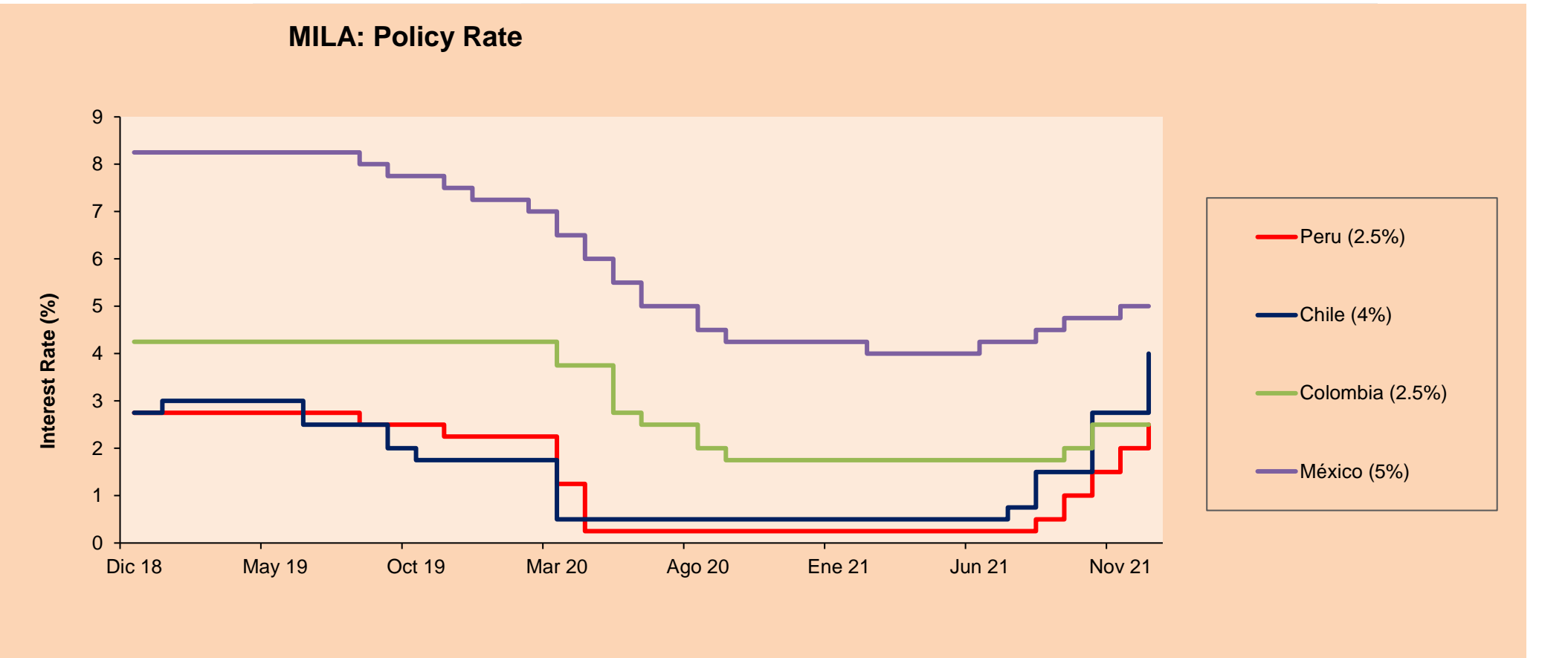
Mexico: The IPC index closed the day with a positive return of +1.63%. The sectors that benefited the most of the day were Health (+6.47%) and Communication Services (+2.39%). The best performing stocks were GENOMMA LAB INTERNACIONAL-B (+6.47%) and REGIONAL SAB DE CV (+6.33%). Headline: Mexican peso falls and stock market rises ahead of fed and bank of mexico decisions



Base: 17/06/21=100  
Source: Bloomberg

### ETFs

ETFs	Curr.	Close	1D	5D	30 D	YTD	Exchange
▼ iShares MSCI All Peru Caped Index Fund	USD	27.57	-1.75%	-4.40%	-9.04%	-20.50%	NYSE Arca
▼ iShares MSCI All Chile Caped Index Fund	USD	23.23	-1.53%	-8.04%	-14.60%	-23.10%	Cboe BZX
▲ Global X MSCI Colombia	USD	9.7758	-1.36%	-6.76%	-5.82%	-13.95%	NYSE Arca
▲ iShares MSCI Mexico Capped	USD	46.85	0.90%	-1.41%	-3.96%	8.98%	NYSE Arca
▼ iShares MSCI Emerging Markets	USD	48.48	-0.23%	-3.19%	-6.77%	-6.17%	NYSE Arca
▼ Vanguard FTSE Emerging Markets	USD	49.35	-0.22%	-1.48%	-5.24%	-1.52%	NYSE Arca
▼ iShares Core MSCI Emerging Markets	USD	59.17	-0.22%	-3.94%	-7.30%	-4.63%	NYSE Arca
▲ iShares JP Morgan Emerging Markets Bonds	USD	61.88	0.05%	-1.57%	-4.08%	1.31%	Cboe BZX
▼ Morgan Stanley Emerging Markets Domestic	USD	5.5	-0.72%	-0.90%	-6.62%	-12.56%	New York



Source: Bloomberg

## WORLD

Main Indices	Close	1 D*	5 D*	1 M*	YTD*	Market Cap. (US\$ Mill.)
▼ Dow Jones (USA)	35,544.18	-0.30%	-0.49%	-1.54%	16.13%	11,685,054
▼ Standard & Poor's 500 (EEUU)	4,634.09	-0.75%	-1.12%	-1.04%	23.38%	41,179,250
▼ NASDAQ Composite (USA)	15,237.64	-1.14%	-2.86%	-3.93%	18.23%	26,195,400
▼ Stoxx EUROPE 600 (Europe)	469.56	-0.84%	-2.21%	-3.86%	17.68%	11,609,242
▼ DAX (Germany)	15,453.56	-1.08%	-2.28%	-4.30%	12.65%	1,472,636
▼ FTSE 100 (United Kingdom)	7,218.64	-0.18%	-1.65%	-1.81%	11.73%	1,567,407
▼ CAC 40 (France)	6,895.31	-0.69%	-2.41%	-3.27%	24.21%	2,034,904
▲ IBEX 35 (Spain)	8,378.50	0.67%	-2.11%	-7.89%	3.78%	501,345
▼ MSCI AC Asia Pacific Index	192.22	-0.63%	-0.66%	-3.93%	-3.85%	25,938,112
▼ HANG SENG (Hong kong)	23,635.95	-1.33%	-1.45%	-6.91%	-13.20%	3,900,037
▼ SHANGHAI SE Comp. (China)	3,661.53	-0.53%	1.85%	3.63%	5.43%	7,546,193
▼ NIKKEI 225 (Japan)	28,432.64	-0.73%	-0.08%	-4.51%	3.60%	4,092,341
▼ S&P / ASX 200 (Australia)	7,378.39	-0.01%	0.88%	-1.71%	11.46%	1,678,050
▲ KOSPI (South Korea)	2,987.95	1.63%	0.63%	-0.39%	3.98%	1,799,552

\*Legend: Variation 1D: 1 Day; 5D: 5 Days, 1M: 1 Month; YTD: Var.% 12/31/20 to date

## Equity

Germany (Stocks from DAX Index)

Largest gains	Curr.	Price	▲ %	Exchange	Largest losses	Curr.	Price	▼ %	Exchange
DBK GY	EUR	10.93	1.15	Xetra	DHER GY	EUR	96.96	-3.28	Xetra
DTE GY	EUR	16.154	0.98	Xetra	IFX GY	EUR	38.7	-3.27	Xetra
PAH3 GY	EUR	86.98	0.51	Xetra	HFG GY	EUR	70.42	-3.08	Xetra
FRE GY	EUR	33.98	0.22	Xetra	PUM GY	EUR	103.1	-2.51	Xetra

Europe (Stocks from STOXX EUROPE 600)

Largest gains	Curr.	Price	▲ %	Exchange	Largest losses	Curr.	Price	▼ %	Exchange
MT NA	EUR	27.72	8.05	EN Amsterdam	ADDTB SS	SEK	194	-5.83	Stockholm
OCDO LN	GBp	1678	5.47	Londres	CDR PW	PLN	172.92	-5.31	Warsaw
UCG IM	EUR	13.378	4.58	Borsa Italiana	ERF FP	EUR	101.98	-5.31	EN Paris
TEF SQ	EUR	3.855	4.42	Soc.Bol SIBE	AMBUB DC	DKK	170.45	-5.17	Copenhagen

## Global Overview:

### United States:

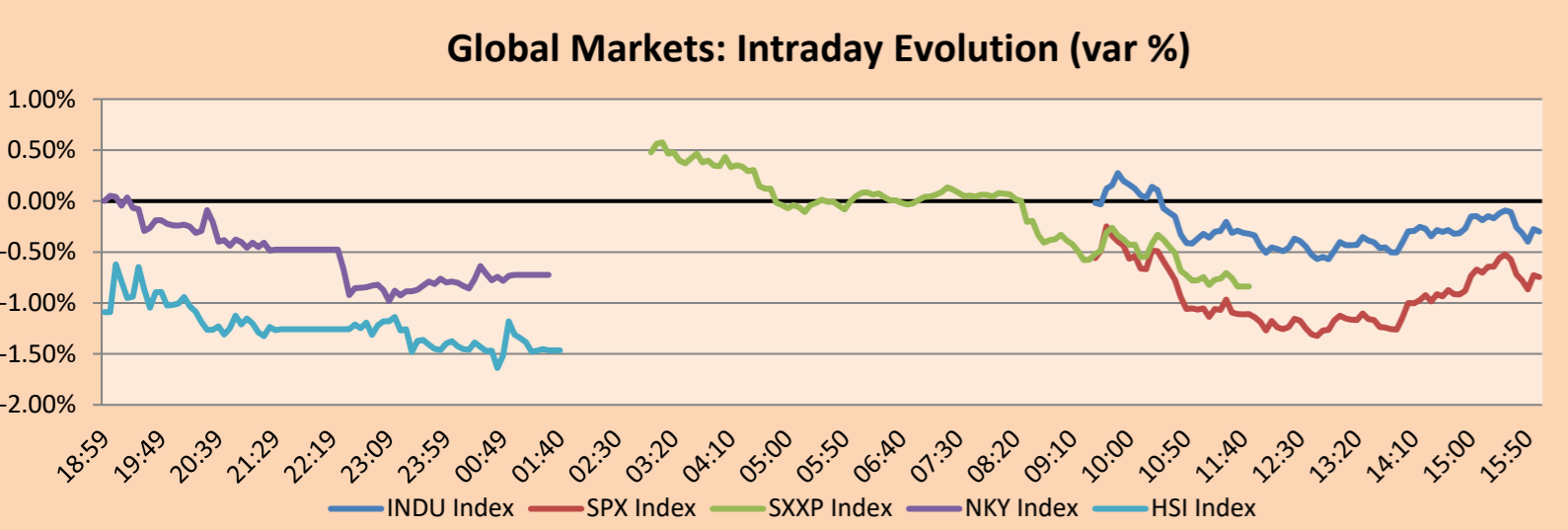
The main US indices close the day with negative returns after a stumble in technology stocks before the meetings of the Federal Reserve and the possible decision on the tightening of monetary policy. Although, it is expected to announce on Wednesday a plan to double its bond buying pace down to \$ 30 billion per month to give it room to raise rates earlier and curb the threat of inflation. The DOW JONES -0.30% index closed lower and with 14 of its 30 values lower. The most affected sectors were Information Technology -1.93%, Non-Basic Consumer Products -0.60% and Industrial -0.50%. Meanwhile, the S&P 500 -0.75% closed in negative territory due to losses in the Information Technology -1.64%, Real Estate -1.27% and Industrial -0.97% sectors. Finally, the NASDAQ technology index -1.14% closed with the biggest losses of the day due to a wave of sales of stocks such as Microsoft -3.26%, Google -1.36%, AAPL -0.80% and Amazon -0.28%. Thus, DOW JONES -0.30%; S&P 500 -0.75% and NASDAQ -1.14% ended the day with negative results.

### Europe:

The main European indices ended the session with negative yields, due to investors' uncertainty ahead of this week's central bank meetings where monetary policy decisions will be announced. In addition, they kept an eye on the evolution of the omicron variant in a context of fear, which continues to spread around the world. The pan-European STOXX 600 index closed negative this day, due to a higher probability that the ECB will signal the end of its massive economic stimulus next March. The U.K. market also closed lower, due to tighter restrictions ahead of Christmas. Moreover, of the confirmed cases, 20% belong to the new strain due to insufficient protection against double inoculation. On the other hand, the German DAX index ended slightly negative due to the publication of the increase in wholesale prices in the US during November, which was higher than expected by the market. Likewise, France's CAC 40 closed with a negative variation, due to a possible collapse of its health care system, already exhausted after two years of pandemic. Thus, FTSE 100 -0.18%; CAC 40 -0.69%; DAX -1.08%; STOXX 600 -0.84% ended with negative performances.

### Asia:

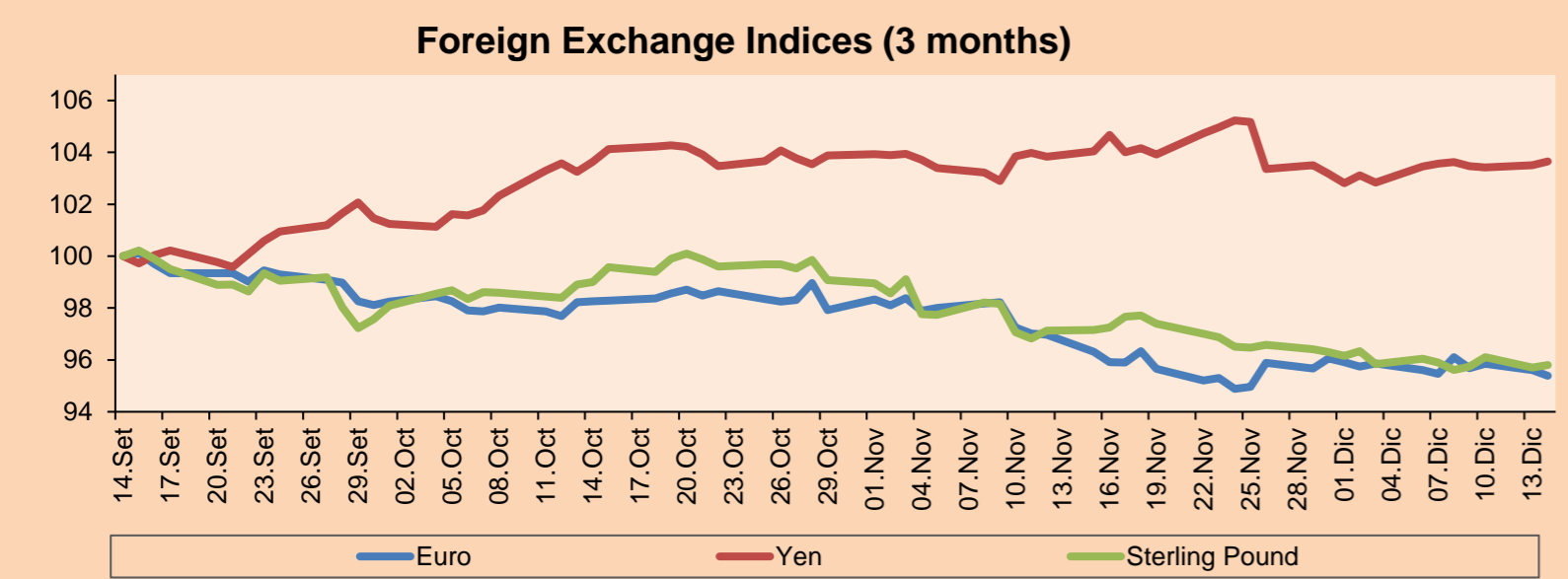
The main Asian indices closed with negative yields, as a decrease in asset purchases by the FED is expected to be signaled later in the week. The Chinese market closed lower due to losses impacted by the omicron variant in consumption and financing, as fears were generated by the first case of the new strain near the Chinese capital. On the other hand, the Hong Kong market resulted in a fall due to the liquidity crisis and debt defaults in Chinese developers. In addition, technology stocks are under pressure as Chinese regulations are expected to be tightened due to the emergence of cases related to the transmission of illegal information. Likewise, the Japanese market closed negatively as it is facing increased uncertainty due to possible regulations that would generate strict restrictions on share repurchases by companies. Similarly, South Korea's KOSPI recorded a decline in its performance, where its two main chip producers, Samsung Electronics -0.26% and SK Hynix -0.82% were found with a drop. Concluding, the Australian market ended in negative territory where the financial sector covered the losses of the retail sector, the latter falling by 6% being its worst performance since March 2020. Thus, NIKKEI -0.73%; HANG SENG -1.33%; CSI 300 -0.67%; S&P/ASX 200 -0.01%; KOSPI -0.46%; SHANGHAI COMPOSITE -0.53% ended with negative performances.



Source: Bloomberg

Currency	Price	1 D*	5 D*	1 M*	YTD*
▼ Euro	1.1259	-0.22%	-0.07%	-1.63%	-7.83%
▲ Yen	113.7000	0.14%	0.09%	-0.17%	10.12%
▲ Sterling Pound	1.3231	0.11%	-0.10%	-1.36%	-3.21%
▲ Yuan	6.3672	0.00%	0.01%	-0.20%	-2.45%
▼ Hong Kong Dollar	7.8010	-0.01%	0.03%	0.13%	0.62%
▲ Brazilian Real	5.6895	0.24%	1.42%	4.27%	9.45%
▲ Argentine Peso	101.7675	0.06%	0.34%	1.55%	20.94%

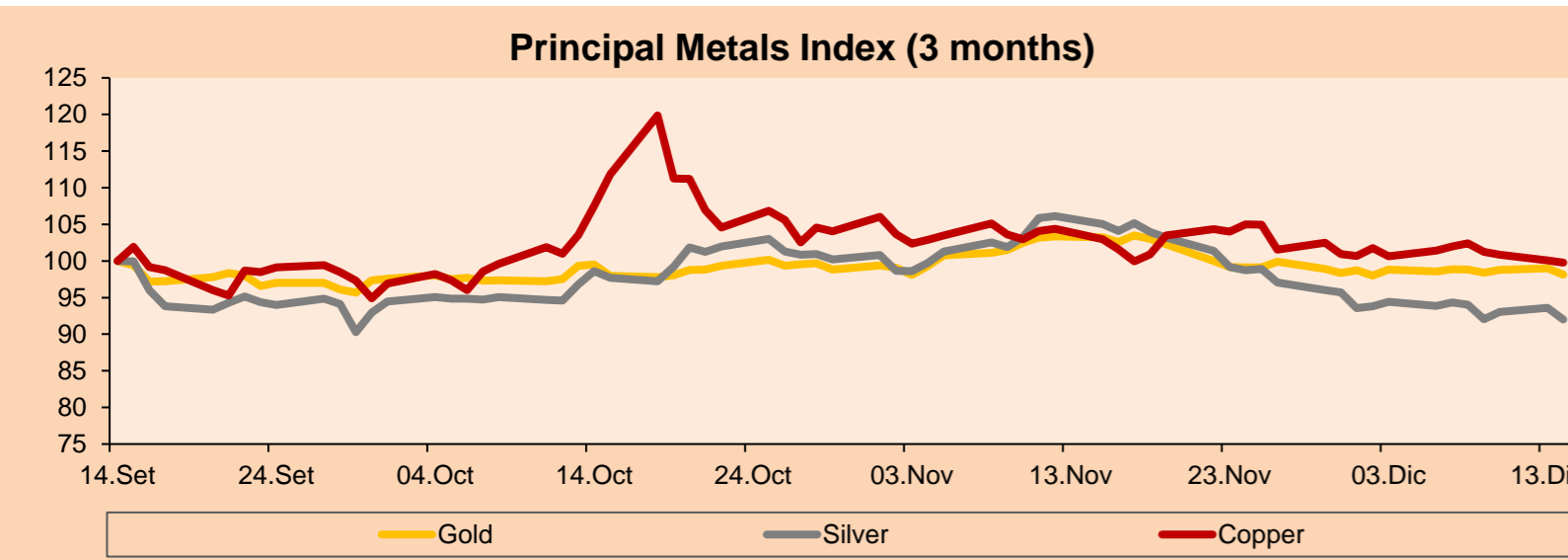
\*Legend: Variation 1D: 1 Day; 5D: 5 Days, 1M: 1 Month; YTD: Var.% 12/31/20 to date



Base: 14/09/21=100  
Source: Bloomberg

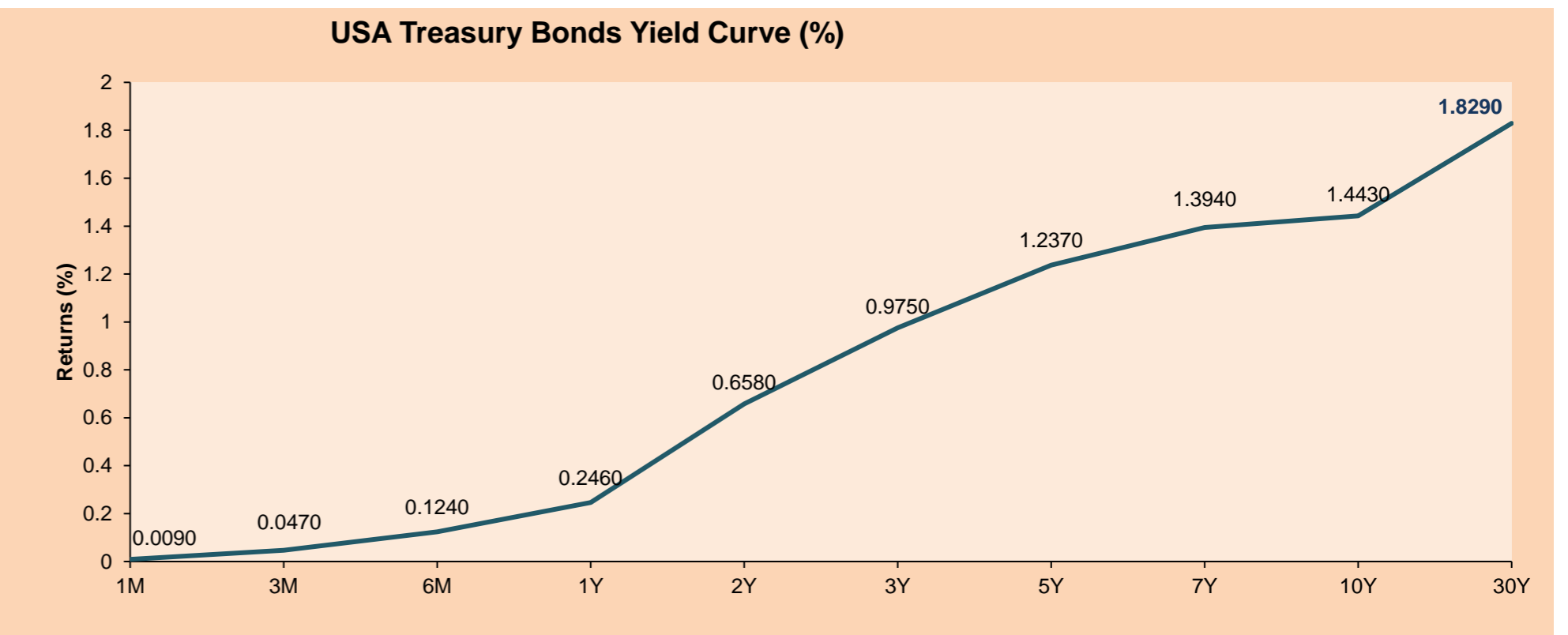
Commodities	Close	1 D*	5 D*	1 M*	YTD*
▼ Oro (US\$ Oz. T) (LME)	1,770.85	-0.89%	-0.74%	-5.04%	-6.72%
▼ Plata (US\$ Oz. T) (LME)	21.95	-1.74%	-2.48%	-13.32%	-16.88%
▼ Cobre (US\$ TM) (LME)	9,406.50	-0.30%	-2.14%	-4.42%	21.39%
▼ Zinc (US\$ TM) (LME)	3,314.25	-0.87%	0.79%	1.13%	21.43%
▼ Petróleo WTI (US\$ Barril) (NYM)	70.73	-0.79%	-1.83%	-11.24%	48.94%
▲ Estaño (US\$ TM) (LME)	39,034.00	0.10%	-0.66%	-0.17%	90.00%
▼ Plomo (US\$ TM) (LME)	2,306.00	-0.56%	5.03%	-3.47%	16.72%
▲ Azúcar #11 (US\$ Libra) (NYB-ICE)	19.65	0.05%	0.87%	-1.80%	37.70%
▼ Cacao (US\$ TM) (NYB-ICE)	2,504.00	-1.11%	0.76%	-0.83%	0.56%
▲ Café Arábica (US\$ TM) (NYB-ICE)	237.15	0.19%	-2.53%	6.85%	74.06%

\*Leyenda: Variación 1D: 1 Día; 5D: 5 Días, 1M: 1 Mes; YTD: Var.% 31/12/20 a la fecha



Base: 14/09/21=100  
Source: Bloomberg

ETFs	Curr.	Close	1D	5D	30 D	YTD	Exchange
SPDR S&P 500 ETF TRUST	USD	463.36	-0.69%	-1.05%	-0.84%	23.93%	NYSE Arca
ISHARES MSCI EMERGING MARKET	USD	48.48	-0.23%	-3.19%	-6.77%	-6.17%	NYSE Arca
ISHARES IBOXX HIGH YLD CORP	USD	86.48	-0.17%	-0.41%	-0.43%	-0.94%	NYSE Arca
FINANCIAL SELECT SECTOR SPDR	USD	38.86	0.60%	-1.12%	-3.21%	31.82%	NYSE Arca
VANECK GOLD MINERS ETF	USD	30.11	-1.31%	-3.92%	-13.40%	-16.41%	NYSE Arca
ISHARES RUSSELL 2000 ETF	USD	214.18	-0.86%	-4.43%	-10.57%	9.24%	NYSE Arca
SPDR GOLD SHARES	USD	165.44	-0.93%	-0.82%	-5.16%	-7.24%	NYSE Arca
ISHARES 20+ YEAR TREASURY BO	USD	150.70	-0.24%	-0.20%	2.29%	-4.46%	NASDAQ GM
INVESTCO QQQ TRUST SERIES 1	USD	388.20	-1.04%	-2.42%	-1.65%	23.73%	NASDAQ GM
ISHARES BIOTECHNOLOGY ETF	USD	148.62	-0.50%	-1.56%	-3.49%	-1.89%	NASDAQ GM
ENERGY SELECT SECTOR SPDR	USD	55.42	-0.41%	-3.23%	-3.70%	46.23%	NYSE Arca
PROSHARES ULTRA VIX ST FUTUR	USD	16.17	2.73%	-6.42%	6.10%	-84.82%	Cboe BZX
UNITED STATES OIL FUND LP	USD	50.92	-1.01%	-1.30%	-9.04%	54.26%	NYSE Arca
ISHARES MSCI BRAZIL ETF	USD	28.14	-0.92%	-8.40%	-8.81%	-24.09%	NYSE Arca
SPDR S&P OIL & GAS EXP & PR	USD	95.27	-1.77%	-6.59%	-11.31%	62.85%	NYSE Arca
UTILITIES SELECT SECTOR SPDR	USD	69.58	-0.60%	0.93%	4.40%	10.97%	NYSE Arca
ISHARES US REAL ESTATE ETF	USD	109.89	-1.22%	-1.58%	-0.14%	28.30%	NYSE Arca
SPDR S&P BIOTECH ETF	USD	108.77	-1.83%	-5.45%	-14.04%	-22.74%	NYSE Arca
ISHARES IBOXX INVESTMENT GRA	USD	132.79	-0.45%	-0.64%	-0.14%	-3.87%	NYSE Arca
ISHARES JP MORGAN USD EMERGI	USD	109.28	-0.26%	-0.04%	-0.27%	-5.72%	NASDAQ GM
REAL ESTATE SELECT SECT SPDR	USD	49.30	-1.10%	-0.12%	2.30%	34.85%	NYSE Arca
ISHARES CHINA LARGE-CAP ETF	USD	37.68	-0.24%	-2.61%	-9.03%	-18.85%	NYSE Arca
CONSUMER STAPLES SPDR	USD	75.21	0.07%	3.04%	3.25%	11.50%	NYSE Arca
VANECK JUNIOR GOLD MINERS	USD	39.54	-2.30%	-5.32%	-17.61%	-27.10%	NYSE Arca
SPDR BLOOMBERG HIGH YIELD BO	USD	107.92	-0.16%	-0.39%	-0.57%	-0.94%	NYSE Arca
VANGUARD REAL ESTATE ETF	USD	110.37	-1.28%	-0.78%	0.64%	29.95%	NYSE Arca
GRAYSCALE BITCOIN TRUST BTC	USD	36.70	3.64%	-8.48%	-28.70%	14.69%	OTC US



Source: Bloomberg

Capital Market Laboratory Coordinator: Economist Bruno Bellido  
Collaboration: Alonso García, Ariam Loayza, Miguel Solimano y Jairo Valverde  
email: pulsobursatil@ulima.edu.pe  
facebook: www.facebook.com/pulsobursatil.ul

# LIMA

## Stocks

Ticker	Currency	Price	1D*	5D*	30D*	YTD*	Frequency	Volume (US\$)	Beta	Dividend Yield (%)	Price Earning	Market Cap. (M US\$)	Economic Sector*	Index Weight
▲ ALICORC1 PE**	S/.	5.60	0.71%	1.93%	-2.07%	-10.45%	100.00%	42,012	0.82	14.91	11.52	1,178.43	Industrial	3.53%
▲ ATACOCB1 PE**	S/.	0.14	0.00%	0.00%	-1.43%	0.00%	21.05%	1,450	1.10	0.00	-	32.17	Mining	1.02%
▲ BACKUSI1 PE**	S/.	22.26	0.27%	1.18%	14.15%	10.47%	94.74%	56,092	0.72	4.20	8.21	7,097.17	Industrial	0.82%
▼ BAP PE**	US\$	109.69	-0.46%	-6.17%	-14.24%	-31.70%	100.00%	672,573	1.25	1.11	-	10,352.80	Diverse	5.82%
▼ BVN PE**	US\$	6.91	-2.68%	-8.23%	-12.31%	-42.42%	94.74%	303,879	1.29	0.00	-	1,901.37	Mining	5.88%
▲ CASAGRC1 PE**	S/.	8.11	0.62%	1.37%	25.15%	70.74%	94.74%	10,972	1.08	12.15	5.58	168.53	Agricultural	1.31%
- BBVAC1 PE**	S/.	1.85	0.00%	2.78%	-7.96%	-11.74%	94.74%	3,102	0.90	2.46	12.76	3,084.54	Finance	2.85%
- CORAREI1 PE**	S/.	1.80	0.00%	4.65%	2.86%	102.25%	100.00%	27,885	0.95	15.31	2.75	545.72	Industrial	1.72%
▼ CPACASC1 PE**	S/.	4.80	-1.03%	-1.03%	-5.33%	-9.43%	100.00%	37,231	0.63	16.46	34.29	549.63	Industrial	2.38%
▼ CVERDEC1 PE**	US\$	38.99	-2.01%	13.67%	58.50%	86.38%	100.00%	2,469,123	1.25	1.47	14.21	13,648.68	Mining	5.25%
▼ ENGEPEC1 PE**	S/.	2.20	-1.35%	-1.35%	-5.17%	-7.17%	42.11%	8,448	0.69	14.13	9.58	1,300.17	Public Services	1.44%
- ENDISPC1**	S/.	4.27	0.00%	0.00%	-5.53%	-20.93%	26.32%	10,530	0.80	0.00	8.72	672.67	Public Services	0.98%
▲ FERREYC1 PE**	S/.	1.89	0.53%	2.16%	-1.56%	8.62%	100.00%	969,328	1.05	10.41	5.32	454.93	Diverse	4.90%
- AENZAC1 PE**	S/.	1.47	0.00%	-2.00%	-7.55%	-15.52%	78.95%	204	1.00	0.00	-	316.20	Diverse	4.05%
▼ IFS PE**	US\$	23.36	-1.85%	-5.84%	-6.75%	-24.50%	100.00%	46,979	1.19	6.08	5.73	2,696.86	Diverse	7.22%
▼ INRETC1 PE**	US\$	33.50	-0.89%	-1.76%	-11.61%	-14.54%	100.00%	31,878	0.87	4.07	73.08	3,444.05	Diverse	5.28%
▼ LUSURC1 PE**	S/.	14.00	-3.45%	-0.71%	-3.45%	-45.10%	84.21%	40,181	#N/A N/A	7.42	13.83	1,681.84	Public Services	1.81%
▼ MINSURI1 PE**	S/.	3.84	-0.78%	3.23%	20.75%	107.57%	100.00%	29,839	0.95	17.90	2.93	2,731.15	Mining	3.09%
- PML PE**	US\$	0.14	0.00%	0.00%	2.19%	32.08%	15.79%	605	1.25	0.00	-	37.01	Mining	2.12%
▼ SCCO PE**	US\$	59.42	-2.38%	-1.07%	-3.90%	-9.83%	89.47%	15,921	0.89	5.39	14.13	45,936.49	Mining	2.14%
▼ SIDERC1 PE**	S/.	1.68	-0.59%	2.44%	8.39%	55.84%	100.00%	49,942	0.86	21.07	4.01	290.12	Industrial	1.43%
- TV PE**	US\$	1.25	0.00%	12.61%	-21.88%	-14.97%	73.68%	6,875	1.26	0.00	-	123.64	Mining	2.93%
- UNACEMC1 PE**	S/.	2.38	0.00%	12.26%	41.67%	53.55%	100.00%	217,648	1.01	2.77	9.96	1,067.51	Industrial	3.00%
▼ VOLCABC1 PE**	S/.	0.58	-1.69%	0.00%	-13.43%	11.54%	100.00%	102,068	1.61	0.00	-	1,659.22	Mining	5.90%
▼ NEXAPEC1 PE**	S/.	3.29	-7.58%	-7.58%	-4.36%	16.25%	63.16%	2,435	1.16	0.00	8.69	1,029.83	Mining	1.56%

Quantity of shares: 25  
 Source: Bloomberg, Economática  
 \* Bloomberg Industry Classification System  
 \*\* PER is used in the stock market and original currency of the instrument  
 \*Legend: Variation 1D: 1 Day; 5D: 5 Days, 1M: 1 Month; YTD: Var.% 12/31/20 to date

Up 4  
 Down 13  
 Hold 8

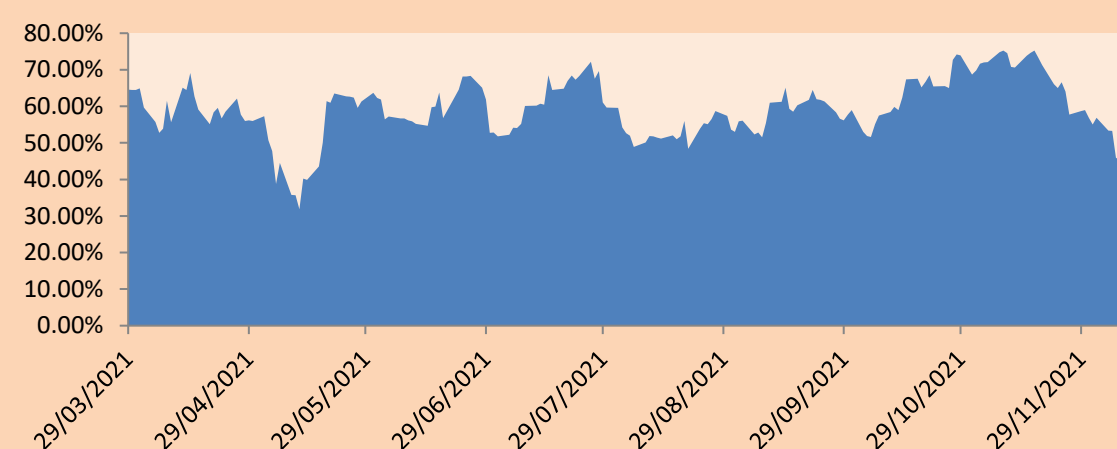
### Sectorial Indices

	Close	1D*	5D*	30D*	YTD*	Beta
▼ S&P/BVLMining	402.33	-2.26%	-1.49%	-0.51%	3.17%	0.87
▼ S&P/BVLConsumer	1,097.03	-0.29%	-0.69%	-6.26%	0.77%	0.75
▼ S&P/BVLIndustrials	254.79	-0.04%	3.99%	9.83%	33.71%	0.79
▼ S&P/BVLFinancials	819.07	-0.19%	-6.02%	-12.03%	-20.78%	1.23
▼ S&P/BVLConstruction	286.35	-0.22%	4.59%	14.10%	36.93%	0.70
▼ S&P/BVLPublicSvcs	560.53	-0.44%	-1.63%	-4.36%	-8.72%	0.28
▼ S&P/BVLElectricUtil	547.21	-0.44%	-1.63%	-4.36%	-8.73%	0.28

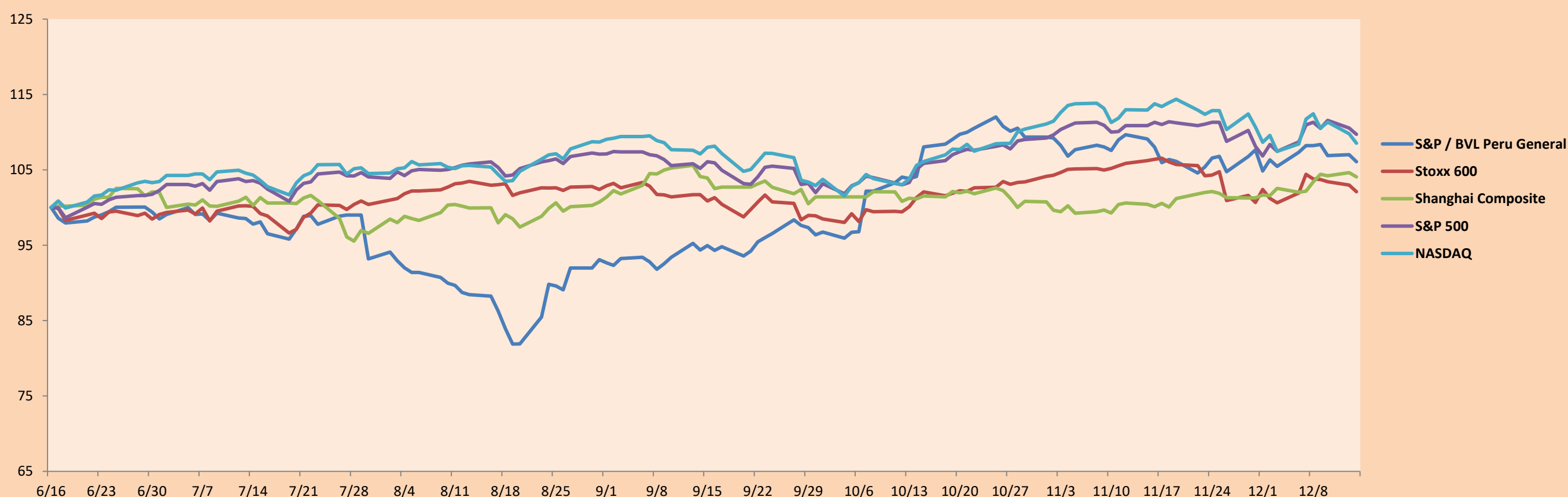
S&P/BVLConstructionTRPEN

\*Legend: Variation 1D: 1 Day; 5D: 5 Days, 1M: 1 Month; YTD: Var.% 12/31/20 to date

Correlation Graph of Returns of Mining Index against Metallic Index of London (3 months)



Indices (6 months)



Base: 16/06/21=100  
 Source: Bloomberg

Capital Market Laboratory Coordinator: Economist Bruno Bellido  
 Collaboration: Alonso García, Ariam Loayza, Miguel Solimano y Jairo Valverde  
 email: pulsobursatil@ulima.edu.pe  
 facebook: www.facebook.com/pulsobursatil.ul

## SOVEREIGN RATING

### RISK RATINGS

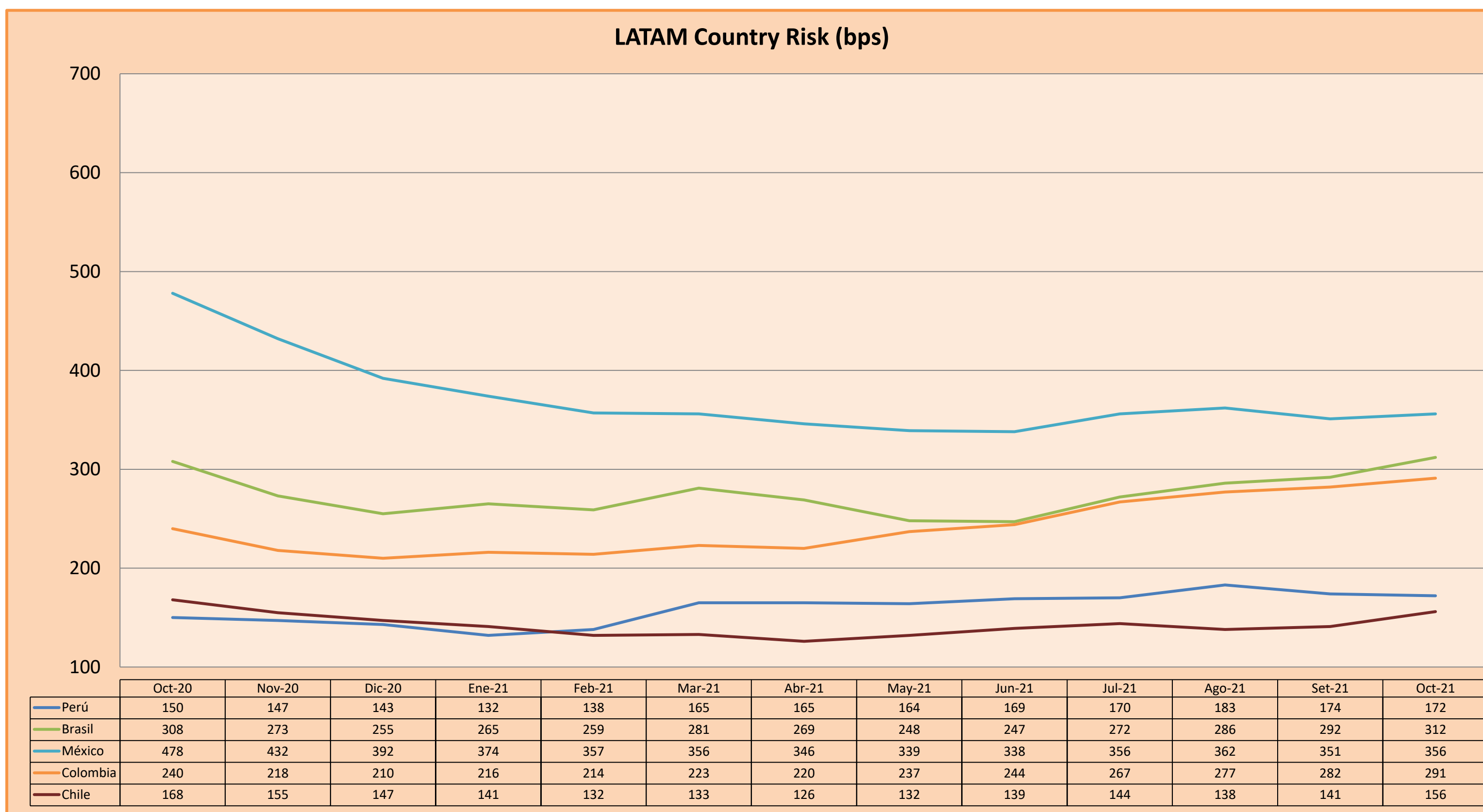
Moody's	S&P	Fitch	
Aaa	AAA	AAA	Prime
Aa1	AA+	AA+	High credit quality
Aa2	AA	AA	
Aa3	AA-	AA-	
A1	A+	A+	Medium-high grade, with low credit risk
A2	A	A	
A3	A-	A-	
Baa1	BBB+	BBB+	Moderate Credit Risk
Baa2	BBB	BBB	
Baa3	BBB-	BBB-	
Ba1	BB+	BB+	It has speculative elements and it is subject to substantial credit risk
Ba2	BB	BB	
Ba3	BB-	BB-	
B1	B+	B+	It is considered speculative and it has high credit risk
B2	B	B	
B3	B-	B-	
Caa1	CCC+	CCC	Bad credit conditions and it is subject to high credit risk
Caa2	CCC		
Caa3	CCC-		
Ca	CC	DDD	Very close to default or in default
	C		
C	D	DD	
		D	

Source: Bloomberg

Latin America Credit Rating			
Clasificadora de riesgo			
Country	Moody's	Fitch	S&P
Peru	Baa1	BBB	BBB+
México	Ba2	BB-	BB-
Venezuela	C	WD	NR
Brazil	Ba2	BB-	BB-
Colombia	Baa2	BB+	BB+
Chile	A1	A-	A
Argentine	Ca	WD	CCC+
Panama	Baa2	BBB-	BBB

Source: Bloomberg

### LATAM Country Risk (bps)



Source: BCRP

Capital Market Laboratory Coordinator: Economist Bruno Bellido  
Collaboration: Alonso García, Ariam Loayza, Miguel Solimano y Jairo Valverde  
email: pulsobursatil@ulima.edu.pe  
facebook: www.facebook.com/pulsobursatil.ul