

PULSO BURSÁTIL

FACULTAD DE CIENCIAS EMPRESARIALES Y ECONÓMICAS
CARRERA DE ECONOMÍA
LABORATORIO DE MERCADO DE CAPITALES

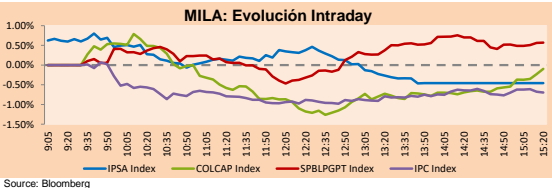


MILA

Lima, January 19, 2022

Main Indexes	Close	1 D	5 D	1 M	YTD	Cap. Burs. (US\$ bill)
▼ IPSA (Chile)	4,470.71	-0.67%	-0.82%	2.59%	3.77%	101.66
▼ IGPA (Chile)	22,472.33	-0.52%	-0.32%	3.33%	4.20%	122.45
▲ COLSC (Colombia)	1,055.30	0.85%	8.41%	12.47%	8.44%	4.59
▼ COLCAP (Colombia)	1,582.84	-0.15%	9.10%	13.47%	12.18%	85.54
▲ S&P/BVL (Perú*)	23,475.13	0.68%	-0.23%	15.40%	11.19%	110.59
▲ S&P/BVL SEL (Perú)	630.38	1.08%	0.17%	17.08%	11.86%	101.04
▲ S&P/BVL LIMA 25	34,444.97	0.70%	-0.28%	17.18%	13.78%	109.31
▼ IPC (México)	52,823.23	-0.77%	-2.09%	0.85%	-0.84%	320.97
▲ S&P MILA 40	495.21	0.57%	2.41%	10.71%	11.32%	6,581.83

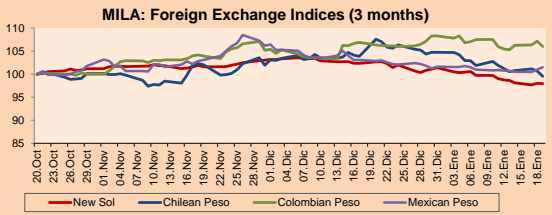
*Legend: Variation 1D: 1 day; 5D: 5 days; 1M: 1 Month; YTD: Var% 12/31/21 to date



Source: Bloomberg

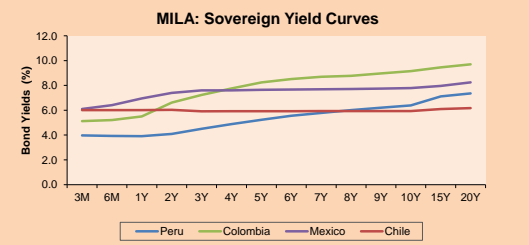
Currency	Price	1D*	5D*	30 D*	YTD*
▼ Sol (PEN)	3,863.33	-0.11%	-0.85%	-4.63%	-3.40%
▼ Chilean Peso (CLP)	809.60	-1.16%	-1.69%	-7.49%	-4.98%
▼ Colombian Peso (COP)	3,995.04	-1.07%	0.52%	-0.30%	-2.09%
▲ Mexican Peso (MXN)	20.51	0.49%	0.73%	-1.34%	-0.11%

*Legend: Variation 1D: 1 day; 5D: 5 days; 1M: 1 Month; YTD: Var% 12/31/21 to date



Base: 20/10/21=100
Source: Bloomberg

Fixed Income	Currency	Price	Bid Yield (%)	Ask Yield (%)	Duration
PERU 7.35 07/21/25	USD	117.873	2.09	1.97	3.07
PERU 4.125 08/25/27	USD	108.378	2.56	2.46	4.97
PERU 8.75 11/21/33	USD	151.987	3.42	3.34	8.27
PERU 6.55 03/14/37	USD	131.559	3.83	3.76	9.81
PERU 5.625 11/18/2050	USD	133.582	3.73	3.70	16.08
CHILE 2.25 10/30/22	USD	101.055	1.14	0.82	0.77
CHILE 3.125 01/21/26	USD	103.987	2.14	2.02	3.72
CHILE 3.625 10/30/42	USD	100.05	3.65	3.60	14.61
COLOM 11.85 03/09/28	USD	149.477	3.02	2.91	4.67
COLOM 10.375 01/28/33	USD	139.809	5.58	5.44	7.06
COLOM 7.375 09/18/37	USD	113.514	6.06	6.00	9.48
COLOM 6.125 01/18/41	USD	100.196	6.14	6.08	11.21
MEX 4 10/02/23	USD	100.196	6.136	6.079	11.21
MEX5.55 01/45	USD	114.761	4.53	4.50	13.40



Source: Bloomberg

Equity

Largest gains	Exchange	Currency	Price	▲%
BUENAVENTURA-ADR	Peru	USD	8.81	6.14
ENTEL	Chile	CLP	3468.90	3.88
SONDA SA	Chile	CLP	311.40	3.80
ALFA SAB-A	Mexico	MXN	14.82	2.35
CENCOSUD SHOPPIN	Chile	CLP	899.00	2.16

Per Turnover	Exchange	Amount (US\$)
WALMART DE MEXIC	Mexico	73,072,662
GRUPO F BANORT-O	Mexico	54,799,571
AMERICA MOVIL-L	Mexico	46,390,539
AERO DEL PACIF-B	Mexico	46,389,525
SOQUIMICH-B	Chile	26,869,392

Largest losses	Exchange	Currency	Price	▼%
COLBUN SA	Chile	CLP	62.07	-5.22
EMPRESAS COPEC	Chile	CLP	6270	-4.22
AERO DEL SURES-B	Mexico	MXN	407.63	-4.13
MEGACABLE-CPO	Mexico	MXN	66.09	-3.50
CMPC	Chile	CLP	1445	-3.01

Per Volume	Exchange	Volume
BANCO SANTANDER	Chile	299,405,132
ITAU CORPBANCA	Chile	161,962,868
ENEL AMERICAS SA	Chile	71,244,780
COLBUN SA	Chile	61,558,729
AMERICA MOVIL-L	Mexico	47,491,054

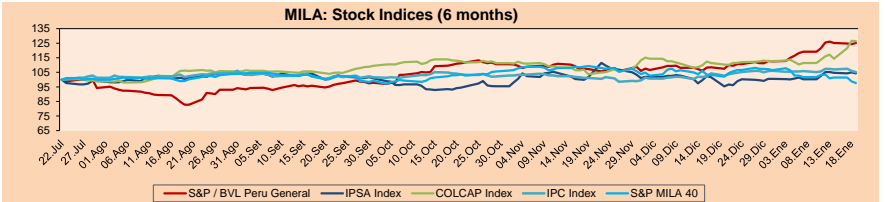
MILA

Peru: The General Index of the BVL ended today's session with a positive result of +0.68%. The index maintains an annual accumulated positive trend of +11.19% in local currency, while the adjusted yield in dollars amounts to +15.10%. Then, the S&P / BVL Peru SEL changed by +1.08% while the S&P / BVL LIMA 25 by +0.70%. The PEN spot reached S / 3.8637. Headline: Castillo reiterates his invitation to businessmen to invest in Peru.

Chile: The IPSA index ended the day with a negative return of -0.67%. The worst performing sectors of the day were Energy (-4.22%) and Industrial (-1.88%). The worst performing stocks were Colbun SA (-5.22%) and Empresas COPEC SA (-4.22%). Headline: Chile Vamos parties value first meeting with Boric and raise the need to advance in a "tax pact".

Colombia: The COLCAP index ended the day with a negative return of -0.15%. The worst performing sectors of the day were Communication Services (-2.05%) and Materials (-1.16%). The worst performing stocks were Inversiones Argos SA (-2.20%) and Empresa de Telecomunicaciones de Bogotá SA (-2.05%). Headline: Colombia attracted 300 million euros in tourism and agriculture projects in 2021, according to ProColombia.

Mexico: The IPC index closed the day with a negative return of -0.77%. The worst performing sectors of the day were Communication Services (-1.99%) and Industrial (-1.32%). The worst performing stocks were Grupo Aeroportuario del Sureste SAB de CV (-4.13%) and Megacable Holdings SAB de CV (-3.50%). Headline: Mexican economy would have grown less than expected in 2021.

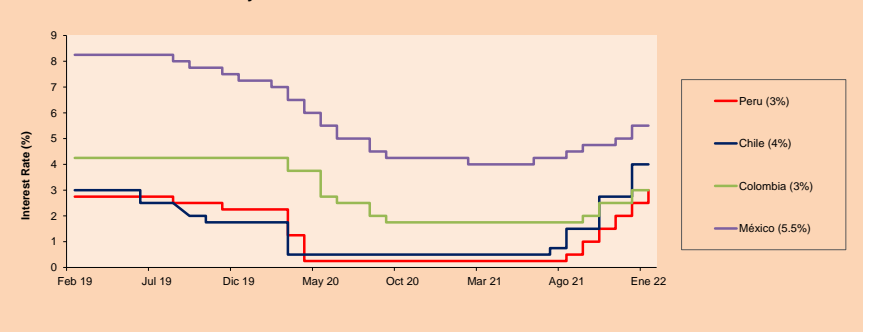


Base: 23/07/21=100
Source: Bloomberg

ETFs

	Curr.	Close	1D	5D	30 D	YTD	Exchange
▲ iShares MSCI All Peru Caped Index Fund	USD	34.1	1.67%	1.43%	23.02%	15.12%	NYSE Arca
▲ iShares MSCI All Chile Caped Index Fund	USD	25.53	2.28%	2.57%	18.63%	10.57%	Cboe BZX
▲ Global X MSCI Colombia	USD	10.973	1.04%	6.23%	11.97%	9.81%	NYSE Arca
▼ iShares MSCI Mexico Capped	USD	49.92	-1.21%	-2.86%	3.18%	-1.34%	NYSE Arca
▲ iShares MSCI Emerging Markets	USD	49.43	0.43%	-2.79%	4.19%	1.19%	NYSE Arca
▲ Vanguard FTSE Emerging Markets	USD	50.14	0.40%	-2.13%	4.87%	1.37%	NYSE Arca
▲ iShares Core MSCI Emerging Markets	USD	80.43	0.47%	-2.64%	4.24%	0.95%	NYSE Arca
▲ iShares JP Morgan Emerging Markets Bonds	USD	63.32	0.13%	-1.39%	3.36%	0.80%	Cboe BZX
▼ Morgan Stanley Emerging Markets Domestic	USD	5.5	-0.54%	-1.26%	2.61%	0.36%	New York

MILA: Policy Rate



Source: Bloomberg

Capital Market Laboratory Coordinator: Economist Bruno Bellido
Collaboration: Sebastian Ore, Ariam Loayza, Miguel Solimano y Jhonatan Cuevae
email: pulsobursatil@ulima.edu.pe
facebook: www.facebook.com/pulsobursatil.ul

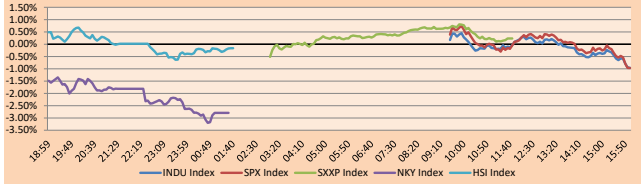
The content of this document is just for informational purposes. The information and opinions expressed should not be consider as recommendations for future decisions. Under any circumstances, the Capital Market Laboratory of University of Lima will be responsible for the use of the statements in this document.

WORLD

Main Indices	Close	1 D*	5 D*	1 M*	YTD*	Market Cap. (US\$ Mill.)
▼ Dow Jones (USA)	35,028.65	-0.96%	-3.37%	-0.95%	-3.60%	11,315,830
▼ Standard & Poor's 500 (EEUU)	4,532.76	-0.97%	-3.83%	-1.90%	-4.90%	40,379,902
▼ NASDAQ Composite (USA)	14,340.25	-1.15%	-5.37%	-5.47%	-8.34%	24,700,964
▲ Stoxx EUROPE 600 (Europe)	480.90	0.23%	-1.09%	2.90%	-1.41%	11,775,163
▲ DAX (Germany)	15,809.72	0.24%	-1.25%	3.74%	-0.47%	1,487,749
▲ FTSE 100 (United Kingdom)	7,589.66	0.35%	0.50%	5.44%	2.78%	1,602,958
▲ CAC 40 (France)	7,172.98	0.55%	-0.89%	4.41%	0.28%	2,063,064
▲ IBEX 35 (Spain)	8,774.90	-0.08%	0.05%	6.46%	0.70%	521,576
▲ MSCI AC Asia Pacific Index	191.15	-1.25%	-2.90%	-0.18%	-1.02%	25,697,254
▲ HANG SENG (Hong Kong)	24,127.85	0.06%	-1.12%	6.08%	3.12%	3,993,748
▲ SHANGHAI SE Comp. (China)	3,558.18	-0.33%	-1.09%	-0.99%	-2.24%	7,412,634
▲ NIKKEI 225 (Japan)	27,467.23	-2.80%	-4.51%	-1.68%	-4.60%	4,043,122
▼ S&P/ASX 200 (Australia)	7,332.50	-1.03%	-1.43%	0.54%	-1.51%	1,707,032
▼ KOSPI (South Korea)	2,842.28	-0.77%	-2.09%	-4.07%	-4.55%	1,700,262

*Legend: Variation 1D: 1 Day; 5D: 5 Days; 1M: 1 Month; YTD: Var. % 12/31/21 to date

Global Markets: Intraday Evolution (var %)

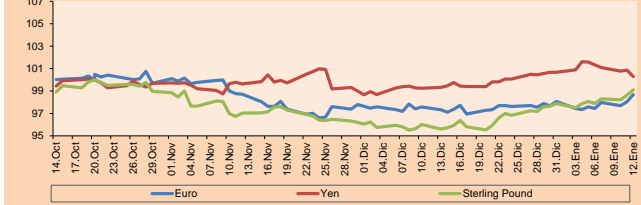


Source: Bloomberg

Currency	Price	1 D*	5 D*	1 M*	YTD*
▲ Euro	1,1343	0.16%	-0.87%	0.57%	-0.24%
▲ Yen	114,3300	-0.24%	-0.27%	0.63%	-0.65%
▲ Sterling Pound	1,3612	0.12%	-0.84%	3.07%	0.59%
▲ Yuan	6,3451	-0.12%	-0.21%	-0.46%	-0.17%
▼ Hong Kong Dollar	7,7909	-0.02%	0.00%	-0.13%	-0.07%
▼ Brazilian Real	5,4461	-2.19%	-1.34%	-5.08%	-2.33%
▼ Argentine Peso	104,2260	0.07%	0.54%	2.06%	1.45%

*Legend: Variation 1D: 1 Day; 5D: 5 Days; 1M: 1 Month; YTD: Var. % 12/31/21 to date

Foreign Exchange Indices (3 months)



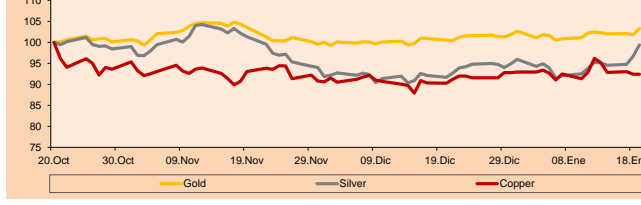
Base: 20/10/21=100

Source: Bloomberg

Commodities	Close	1 D*	5 D*	1 M*	YTD*
▲ Oro (US\$ Oz. T) (LME)	1,840.54	1.48%	0.79%	2.77%	0.62%
▲ Plata (US\$ Oz. T) (LME)	24.14	2.85%	4.30%	8.39%	3.56%
- Cobre (US\$ TM) (LME)	9,685.50	0.00%	-3.92%	2.35%	-0.57%
- Zinc (US\$ TM) (LME)	3,579.50	0.00%	0.31%	6.09%	-0.29%
▲ Petróleo WTI (US\$ Barril) (NYM)	86.96	1.79%	5.23%	26.75%	15.62%
- Estante (US\$ TM) (LME)	42,654.00	0.00%	2.26%	10.22%	8.33%
- Plomo (US\$ TM) (LME)	2,324.25	0.00%	-1.53%	0.63%	-0.58%
▲ Azúcar #11 (US\$ Libra) (NYB-ICE)	19.07	2.20%	3.98%	2.58%	1.01%
▲ Cacao (US\$ TM) (NYB-ICE)	2,657.00	0.99%	3.83%	9.66%	5.44%
▲ Café Arábica (US\$ TM) (NYB-ICE)	244.45	2.02%	1.49%	9.08%	8.12%

*Legend: Variación 1D: 1 Día; 5D: 5 Días; 1M: 1 Mes; YTD: Var. % 31/12/21 a la fecha

Principal Metals Index (3 months)



Base: 20/10/21=100

Source: Bloomberg

Equity

Germany (Stocks from DAX Index)

Largest gains	Curr.	Price	▲%	Exchange	Largest losses	Curr.	Price	▼%	Exchange
HFG GY	EUR	56.42	2.06	Xetra	FME GY	EUR	59.82	-2.00	Xetra
DTE GY	EUR	16.198	1.50	Xetra	EOAN GY	EUR	12.094	-1.64	Xetra
LN GY	EUR	285.8	1.49	Xetra	CON GY	EUR	94.02	-1.51	Xetra
DB1 GY	EUR	158.15	1.25	Xetra	DBK GY	EUR	11.784	-1.19	Xetra

Europe (Stocks from STOXX EUROPE 600)

Largest gains	Curr.	Price	▲%	Exchange	Largest losses	Curr.	Price	▼%	Exchange
SMW HLN	Gbp	1662.5	7.09	Londres	SAB SQ	EUR	0.6562	-5.06	Soc.Bol SIBE
BRBY LN	Gbp	1866.5	6.32	Londres	KBC BB	EUR	80.36	-4.42	EN Brussels
CHR DC	DKK	551.8	5.23	Copenhagen	AHT LN	Gbp	5216	-4.36	Londres
CFR SE	CHF	141	5.15	SIX Swiss Ex	LHA GY	EUR	6.82	-4.33	Xetra

Global Overview:

United States:

Major U.S. indices closed the day with negative returns, due to nervousness over the continued rise in Treasuries, which continues to be present for investors. On the indexes side, the DOW closed lower, with 21 of its 30 stocks with negative returns, one of the main stocks that generated this decline was Boeing, due to a large number of flight disruptions, which were generated by the possible interference by the 5G network. Likewise, the S&P 500 had negative returns, which were dragged down by the consumer discretionary -1.81% and the financial sector -1.65%, despite the fact that today a large portion of publicly traded companies have shown encouraging results for the last quarter of 2021. Likewise, the NASDAQ closed its quotation with a negative sign, generating a correction being this the 66th, this is due to the fact that the increase in bond yields has a greater weight than that of technology stocks, in addition, an increase in interest rates is expected, which generates that this type of firms will be affected, due to the high levels of financing required. Thus, DOW JONES -0.96%; S&P 500 -0.97% and NASDAQ -1.15% ended the day with negative results.

Europe:

Major European indices ended the session with positive returns, as European equities rallied on encouraging signs of the start of earnings season, which outweighed concerns about rising bond yields. The pan-European STOXX 600 index closed +0.23%; amid persistent weakness in U.S. benchmarks. The U.K. market ended higher, despite the Bank of England signaling that the U.K. inflation outlook is likely to worsen when forecasts are completed. This is because political tensions over Ukraine may lead to persistently higher gas prices. Meanwhile, Germany's DAX index ended with positive returns after yields on benchmark German debt rose above zero for the first time since before the pandemic, as investors backed for central banks to reduce monetary stimulus in the face of accelerating inflation. Similarly, France's CAC40 closed with positive swings as French President Emmanuel Macron backed a plan to change the European Union's fiscal framework, showing that the proposed changes are consistent with an easing of fiscal policy. They would also increase investment spending and help the eurozone economy to recover. Thus, FTSE 100 +0.35%; CAC 40 +0.55%; DAX +0.24%; STOXX 600 +0.23% ended with positive returns.

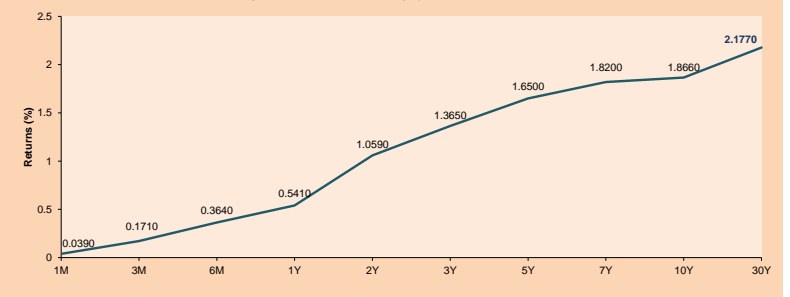
Asia:

Major Asian indices closed with mixed performances, due to a massive overnight sell-off on Wall Street, as well as an increase in expectations of a greater need for central banks to raise interest rates faster. The Chinese market closed in negative territory, triggered by rising US bond yields driving funds into stocks with low valuations and high earnings. However, the Hong Kong market saw a rise in performance, as China's increased stance on looser monetary policy helped the property and banking sector. On the other hand, Japanese equities had a negative return, after the Bank of Japan raised its inflation forecast to a higher-than-expected acceleration. Likewise, South Korea's KOSPI registered a negative change in its performance, due to inflationary pressure and fears of a rate hike by the FED. Likewise, Australian stocks closed lower, after investors sold their positions in technology companies indicating the lowest close in a month and the increase in projections for deaths due to COVID19 in the following weeks. Thus, NIKKEI -2.80%; HANG SENG +0.6%; CSI 300 -0.69%; S&P/ASX 200 -1.03%; KOSPI -0.77% ended with mostly negative returns.

ETFs

ETFs	Curr.	Close	1D	5D	30 D	YTD	Exchange
SPDR S&P 500 ETF TRUST	USD	451.75	-1.04%	-4.09%	-0.71%	-4.89%	NYSE Arca
ISHARES MSCI EMERGING MARKET	USD	49.43	0.43%	-2.79%	4.19%	1.19%	NYSE Arca
ISHARES IBOXX HIGH YLD CORP	USD	85.59	-0.09%	-1.03%	-0.73%	-1.63%	NYSE Arca
FINANCIAL SELECT SECTOR SPDR	USD	39.25	-1.68%	-5.24%	4.22%	0.51%	NYSE Arca
VANECK GOLD MINERS ETF	USD	32.79	7.16%	3.41%	7.19%	2.37%	NYSE Arca
ISHARES RUSSELL 2000 ETF	USD	204.45	-1.63%	-5.34%	-3.62%	-8.09%	NYSE Arca
SPDR GOLD SHARES	USD	172.08	1.59%	0.78%	2.99%	0.66%	NYSE Arca
ISHARES 20+ YEAR TREASURY BO	USD	141.07	0.69%	-1.36%	-5.76%	-4.80%	NASDAQ GM
INVESCO QQQ TRUST SERIES 1	USD	366.48	-1.10%	-5.39%	-3.73%	-7.88%	NASDAQ GM
ISHARES BIOTECHNOLOGY ETF	USD	131.83	-1.22%	-7.12%	-13.94%	-13.62%	NASDAQ GM
ENERGY SELECT SECTOR SPDR	USD	64.30	-0.73%	1.50%	21.30%	16.86%	NYSE Arca
PROSHARES ULTRA VIX ST FUTUR	USD	14.20	3.80%	23.37%	-16.22%	14.24%	Cboe BZX
UNITED STATES OIL FUND LP	USD	61.05	0.13%	3.63%	22.34%	12.31%	NYSE Arca
ISHARES MSCI BRAZIL ETF	USD	29.89	3.46%	3.60%	8.73%	6.48%	NYSE Arca
SPDR S&P OIL & GAS EXP & PR	USD	107.92	-1.10%	-1.70%	18.66%	12.57%	NYSE Arca
UTILITIES SELECT SECTOR SPDR	USD	68.88	0.45%	-0.95%	-0.93%	-3.77%	NYSE Arca
ISHARES US REAL ESTATE ETF	USD	106.95	-1.28%	-3.38%	-3.05%	-7.91%	NYSE Arca
SPDR S&P BIOTECH ETF	USD	93.50	-1.08%	-7.06%	-19.25%	-16.49%	NYSE Arca
ISHARES IBOXX INVESTMENT GRA	USD	128.13	0.16%	-1.36%	-3.25%	-3.31%	NYSE Arca
ISHARES JIP MORGAN USD EMERGI	USD	104.66	0.67%	-1.47%	-3.00%	-4.03%	NASDAQ GM
REAL ESTATE SELECT SECT SPDR	USD	47.34	-1.29%	-3.45%	-3.98%	-8.63%	NYSE Arca
ISHARES CHINA LARGE-CAP ETF	USD	37.86	0.42%	-2.07%	6.44%	3.50%	NYSE Arca
CONSUMER STAPLES SPDR	USD	76.40	0.63%	-0.46%	2.26%	-0.92%	NYSE Arca
VANECK JUNIOR GOLD MINERS	USD	42.89	7.17%	3.08%	7.57%	2.29%	NYSE Arca
SPDR BLOOMBERG HIGH YIELD BO	USD	106.86	-0.09%	-0.98%	-0.70%	-1.58%	NYSE Arca
VANGUARD REAL ESTATE FT	USD	106.86	-1.35%	-3.46%	-3.62%	-7.89%	NYSE Arca
GRAYSCALE BITCOIN TRUST BTC	USD	28.02	-1.93%	-12.30%	-18.71%	-18.19%	OTC US

USA Treasury Bonds Yield Curve (%)



Source: Bloomberg

Capital Market Laboratory Coordinator: Economist Bruno Bellido

Collaboration: Sebastian Ore, Ariam Loayza, Miguel Solimano y Jhonatan Cueva

email: pulsohorsatil@ulima.edu.pe

facebook: www.facebook.com/pulsohorsatil.u

LIMA

Stocks

Ticker	Currency	Price	1D*	5D*	30D*	YTD*	Frequency	Volume (US\$)	Beta	Dividend Yield (%)	Price Earning	Market Cap. (M US\$)	Economic Sector*	Index Weight
▲ ALICORC1 PE**	S/.	6.90	0.85%	8.41%	12.47%	8.44%	100.00%	1,068,077	0.84	12.10	16.56	1,521.91	Industrial	3.53%
▲ ATACOBC1 PE**	S/.	0.14	1.50%	2.27%	3.85%	12.50%	21.05%	7,851	1.10	0.00	-	33.02	Mining	1.02%
▲ BACKUSI1 PE**	S/.	21.50	2.38%	1.65%	3.97%	4.88%	94.74%	67,362	0.71	14.49	7.93	7,413.28	Industrial	0.82%
▼ BAP PE**	US\$	142.00	-1.23%	-0.90%	23.48%	14.72%	100.00%	532,784	1.30	0.86	-	13,402.29	Diverse	5.82%
▲ BVN PE**	US\$	8.81	6.14%	4.88%	26.76%	20.68%	94.74%	832,843	1.28	0.00	-	2,424.17	Mining	5.88%
▲ CASAGRC1 PE**	S/.	16.31	3.89%	8.37%	93.02%	79.23%	94.74%	200,088	1.01	6.04	11.22	355.62	Agricultural	1.31%
▲ BBVAC1 PE**	S/.	2.06	3.52%	8.42%	13.19%	13.81%	94.74%	266,656	0.91	2.21	14.21	3,603.77	Finance	2.85%
- CORAREI1 PE**	S/.	1.87	0.00%	-1.06%	10.00%	8.72%	100.00%	108,541	0.88	14.74	2.85	575.89	Industrial	1.72%
- CPACASC1 PE**	S/.	4.98	-0.40%	0.40%	7.10%	0.61%	100.00%	145,174	0.65	15.86	35.57	597.48	Industrial	2.38%
▼ CVERDEC1 PE**	US\$	43.50	-2.25%	-8.42%	14.32%	16.84%	100.00%	1,324,915	1.22	4.60	15.85	15,227.44	Mining	5.25%
- ENGEPEC1 PE**	S/.	2.16	0.00%	5.37%	-1.82%	4.35%	36.84%	5,863	0.67	14.40	9.40	1,339.38	Public Services	1.44%
▲ ENDISPC1**	S/.	4.23	1.20%	1.44%	3.42%	5.75%	21.05%	6,975	0.80	7.81	8.64	699.18	Public Services	0.98%
▲ FERREYU1 PE**	S/.	2.51	2.03%	2.45%	30.73%	22.44%	100.00%	2,473,190	1.05	7.84	7.07	633.90	Diverse	4.90%
- AENZAC1 PE**	S/.	1.56	0.00%	0.65%	22.83%	13.87%	84.21%	74,992	1.14	0.00	-	352.08	Diverse	4.05%
▲ IFS PE**	US\$	31.25	0.81%	2.46%	33.55%	16.39%	100.00%	150,595	1.20	4.54	7.31	3,607.74	Diverse	7.22%
- INRETC1 PE**	US\$	36.60	0.00%	0.00%	11.93%	4.72%	100.00%	141,386	0.84	3.72	76.13	3,762.75	Diverse	5.28%
▲ LUSURC1 PE**	S/.	14.72	3.30%	2.58%	3.37%	3.37%	78.95%	9,893	#N/A N/F	6.56	13.43	1,855.39	Public Services	1.81%
▲ MINSURI1 PE**	S/.	4.75	0.42%	-1.04%	23.38%	20.25%	100.00%	192,361	0.98	14.47	3.80	3,544.71	Mining	3.09%
- PML PE**	US\$	0.15	0.00%	18.60%	33.04%	29.66%	21.05%	6,888	1.26	0.00	-	40.45	Mining	2.12%
▲ SCCO PE**	US\$	68.50	0.26%	-1.01%	21.39%	10.88%	89.47%	85,209	0.89	4.67	16.29	52,956.07	Mining	2.14%
▼ SIDERC1 PE**	S/.	1.69	-0.59%	-2.87%	3.68%	5.62%	100.00%	8,547	0.86	26.19	4.03	306.21	Industrial	1.43%
▲ TV PE**	US\$	1.50	3.45%	-1.32%	36.36%	15.38%	73.68%	27,600	1.23	0.00	-	148.36	Mining	2.93%
- UNACEM1 PE**	S/.	2.40	0.00%	-1.23%	-1.23%	0.00%	100.00%	253,506	0.93	4.42	10.04	1,129.48	Industrial	3.00%
- VOLCABC1 PE**	S/.	0.73	0.00%	-1.35%	28.07%	21.67%	100.00%	502,024	1.58	0.00	-	770.30	Mining	5.90%
▼ NEXAPEC1 PE**	S/.	3.85	-1.79%	-1.28%	6.94%	8.15%	63.16%	3,637	1.15	0.00	10.66	1,264.79	Mining	1.56%

Quantity of shares: 25
Source: Bloomberg, Economática
* Bloomberg Industry Classification System
** PER is used in the stock market and original currency of the instrument
*Legend: Variation 1D: 1 Day; 5D: 5 Days, 1M: 1 Month; YTD: Var.% 12/31/21 to date

Up 13
Down 5
Hold 7

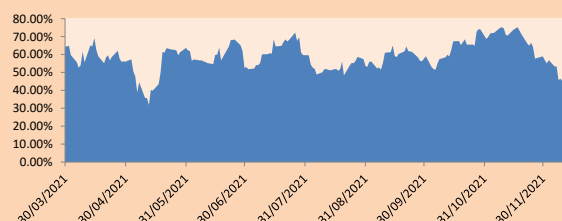
Sectorial Indices

	Close	1D*	5D*	30D*	YTD*	Beta
▲ S&P/BVLMining	457.23	1.22%	-1.34%	17.60%	11.09%	0.86
▲ S&P/BVLConsumer	1,249.88	0.93%	0.83%	14.42%	8.88%	0.74
▲ S&P/BVLIndustrials	281.16	0.53%	0.66%	11.66%	8.95%	0.79
▼ S&P/BVLFinancials	1,006.74	-0.78%	-1.13%	18.31%	11.11%	1.24
▼ S&P/BVLConstruction	295.12	-0.09%	-0.08%	5.24%	4.14%	0.71
▲ S&P/BVLPublicSvcs	569.51	0.20%	2.94%	1.48%	3.83%	0.27
▲ S&P/BVLElectricUtil	555.98	0.20%	2.94%	1.47%	3.83%	0.27

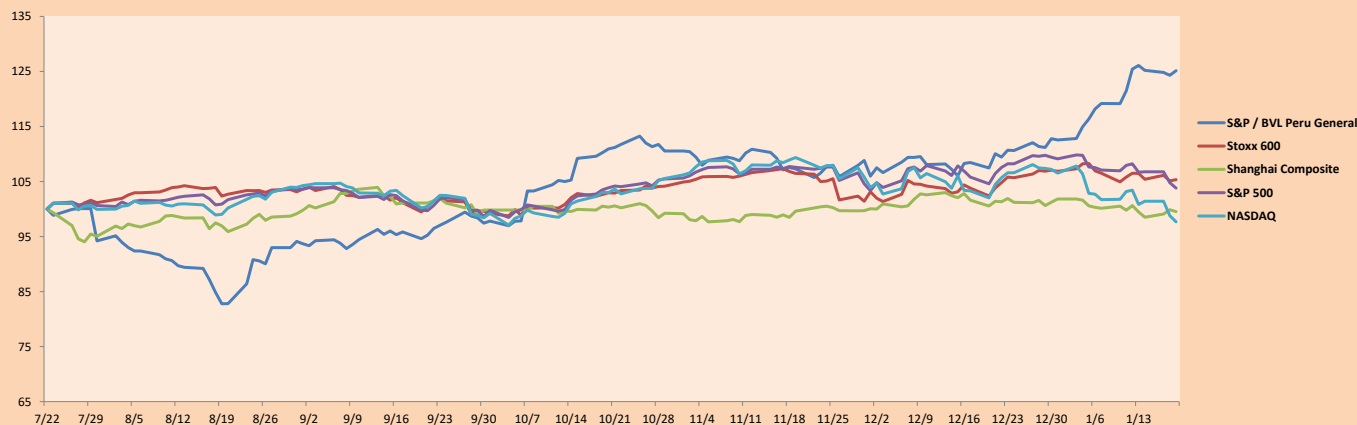
S&P/BVLConstructionTRPEN

*Legend: Variation 1D: 1 Day; 5D: 5 Days, 1M: 1 Month; YTD: Var.% 12/31/21 to date

Correlation Graph of Returns of Mining Index against Metallic Index of London (3 months)



Indices (6 months)



Base: 22/07/21=100
Source: Bloomberg

Capital Market Laboratory Coordinator: Economist Bruno Bellido
Collaboration: Sebastian Ore, Ariam Loayza, Miguel Solimano y Jhonatan Cueva
email: pulsohorsatil@ulima.edu.pe
facebook: www.facebook.com/pulsohorsatil.ul

SOVEREIGN RATING

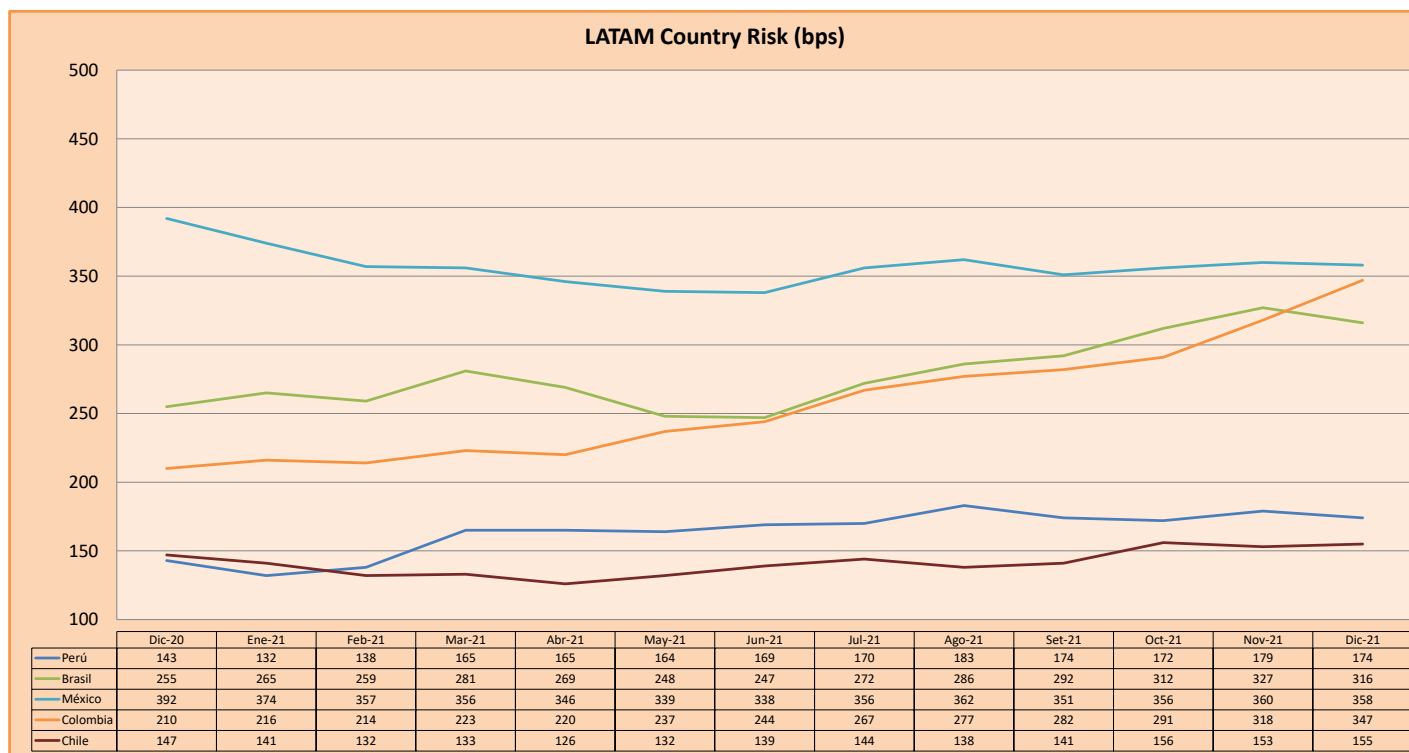
RISK RATINGS

Moody's	S&P	Fitch		
Aaa	AAA	AAA	Prime	
Aa1	AA+	AA+	High credit quality	
Aa2	AA	AA		
Aa3	AA-	AA-		
A1	A+	A+	Medium-high grade, with low credit risk	
A2	A	A		
A3	A-	A-		
Baa1	BBB+	BBB+	Moderate Credit Risk	
Baa2	BBB	BBB		
Baa3	BBB-	BBB-		
Ba1	BB+	BB+	It has speculative elements and it is subject to substantial credit risk	
Ba2	BB	BB		
Ba3	BB-	BB-		
B1	B+	B+	It is considered speculative and it has high credit risk	
B2	B	B		
B3	B-	B-		
Caa1	CCC+	CCC	Bad credit conditions and it is subject to high credit risk	
Caa2	CCC			
Caa3	CCC-			
Ca	C	DDD	Very close to default or in default	
C	D			DD
				D

Source: Bloomberg

Latin America Credit Rating			
Clasificadora de riesgo			
Country	Moody's	Fitch	S&P
Peru	Baa1	BBB	BBB+
México	Ba2	BB-	BB-
Venezuela	C	WD	NR
Brazil	Ba2	BB-	BB-
Colombia	Baa2	BB+	BB+
Chile	A1	A-	A
Argentina	Ca	WD	CCC+
Panama	Baa2	BBB-	BBB

Source: Bloomberg



Source: BCRP

Capital Market Laboratory Coordinator: Economist Bruno Bellido
Collaboration: Sebastian Ore, Ariam Loayza, Miguel Solimano y Jhonatan Cueva
email: pulsobursatil@ulima.edu.pe
facebook: www.facebook.com/pulsobursatil.ul