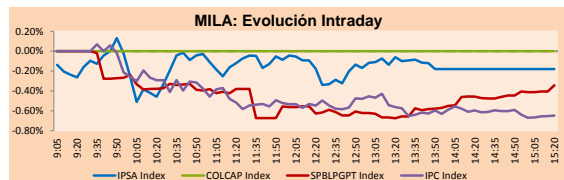


MILA

Lima, January 10, 2022

Main Indexes	Close	1 D	5 D	1 M	YTD	Cap. Burs. (US\$ bill)
▲ IPSA (Chile)	4,298.24	0.04%	-0.07%	8.04%	7.81%	96.07
▲ IGPA (Chile)	21,457.14	-0.08%	-0.51%	7.86%	7.42%	115.65
▼ COLSC (Colombia)	972.59	-0.26%	-0.06%	9.77%	7.27%	4.22
▲ COLCAP (Colombia)	1,394.22	0.90%	-1.19%	8.70%	7.98%	75.29
▼ S&P/BVL (Perú)*	22,352.65	-0.01%	5.62%	10.56%	8.68%	104.61
▼ S&P/BVL SEL (Perú)	596.06	-0.11%	5.22%	11.36%	8.85%	95.60
▲ S&P/BVL LIMA 25	33,237.68	1.35%	8.95%	14.52%	12.63%	103.36
▲ IPC (México)	52,835.76	-0.69%	-0.20%	-2.37%	-3.14%	323.71
▼ S&P MILA 40	451.85	-0.58%	1.57%	12.47%	11.98%	6,594.01

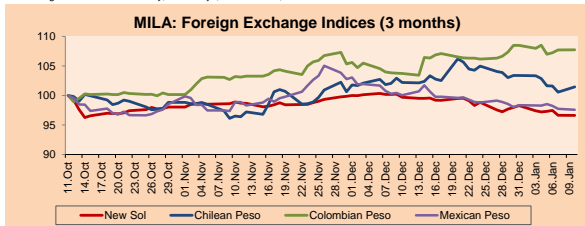
*Legend: Variation 1D: 1 day; 5D: 5 days; 1M: 1 Month; YTD: Var% 12/31/20 to date



Source: Bloomberg

Currency	Price	1D*	5D*	30 D*	YTD*
▼ Sol (PEN)	3.9337	-0.04%	-0.81%	-3.10%	-1.64%
▲ Chilean Peso (CLP)	835.92	0.88%	-1.85%	-0.75%	-1.89%
▲ Colombian Peso (COP)	4,051.98	0.02%	-0.24%	3.86%	-0.69%
▼ Mexican Peso (MXN)	20.37	-0.15%	-0.73%	-2.46%	-0.77%

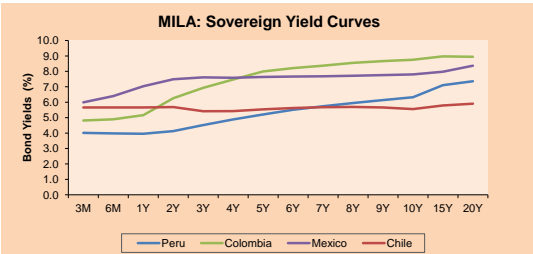
*Legend: Variation 1D: 1 day; 5D: 5 days; 1M: 1 Month; YTD: Var% 12/31/20 to date



Base: 11/10/21=100

Source: Bloomberg

Fixed Income	Currency	Price	Bid Yield (%)	Ask Yield (%)	Duration
PERU 7.35 07/21/25	USD	118.254	2.03	1.90	3.09
PERU 4.125 08/25/27	USD	108.626	2.51	2.43	5.00
PERU 8.75 11/21/33	USD	152.361	3.38	3.34	8.33
PERU 6.55 03/14/37	USD	131.689	3.81	3.76	9.86
PERU 5.625 11/18/2050	USD	134.272	3.70	3.68	16.23
CHILE 2.25 10/30/22	USD	101.184	1.04	0.48	0.79
CHILE 3.125 01/21/26	USD	104.836	1.93	1.82	3.76
CHILE 3.625 10/30/42	USD	102.254	3.49	3.46	14.76
COLOM 11.85 03/09/28	USD	150.574	2.91	2.77	4.70
COLOM 10.375 01/28/33	USD	139.497	5.65	5.44	7.12
COLOM 7.375 09/18/37	USD	114.015	6.02	5.95	9.55
COLOM 6.125 01/18/41	USD	100.874	6.08	6.02	10.98
MEX 4 10/02/23	USD	100.874	6.077	6.017	10.98
MEX5.55 01/45	USD	115.559	4.48	4.44	13.50



Source: Bloomberg

Equity

Largest gains	Exchange	Currency	Price	▲%
PARQUE ARAUCO	Chile	CLP	860.00	3.99
BANCO SANTANDER	Chile	CLP	38.00	2.70
GRUMA SAB-B	Mexico	MXN	261.46	2.17
ENTEL	Chile	CLP	2955.00	1.90
BANCO DE CHILE	Chile	CLP	76.00	1.60

Per Turnover	Exchange	Amount (US\$)
GRUPO F BANORT-O	Mexico	46,576,457
AMERICA MOVIL-L	Mexico	37,078,438
WALMART DE MEXIC	Mexico	31,589,157
ENEL AMERICAS SA	Chile	29,034,991
BANCO DE CHILE	Chile	23,205,438

Largest losses	Exchange	Currency	Price	▼%
VOLCAN CIA MIN-B	Peru	PEN	0.7	-2.78
COLBUN SA	Chile	CLP	62.77	-2.68
SQUIMICH-B	Chile	CLP	40351	-2.63
AGUAS ANDINAS-A	Chile	CLP	160.12	-2.37
CEMEX SAB-CPO	Mexico	MXN	13.06	-2.17

Per Volume	Exchange	Volume
ENEL AMERICAS SA	Chile	261,316,725
BANCO DE CHILE	Chile	255,318,810
ITAU CORPBANCA	Chile	111,788,251
BANCO SANTANDER	Chile	85,272,859
AMERICA MOVIL-L	Mexico	36,322,108

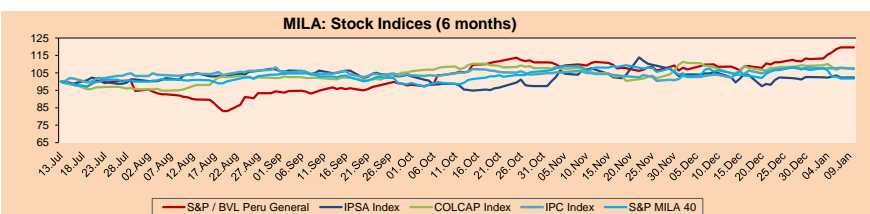
MILA

Peru: The General Index ended today's session with a negative result of -0.01%. The index maintains an annual cumulative positive trend of +5.88% in local currency, while the adjusted return in dollars amounts to +7.64%. Then, the S&P / BVL Peru SEL changed by -0.11% while the S&P / BVL LIMA 25 by +1.35%. The PEN spot reached S/. 3.9337. Headline: Exchange rate closed higher, in line with regional markets

Chile: The IPSA index ended the day with a negative return of +0.04%. The sectors that benefited the most from the session were Real Estate (+3.11%) and Communication Services (+1.90%). The best performing stocks were PLAZA SA Y FILIALES (+4.72%) and PARQUE ARAUCO S.A. (+3.99%). Headline: Wall Street closes in the red despite last minute rebound as IPSA ends flat

Colombia: The Colombian market did not trade today due to the Three Kings Day holiday.

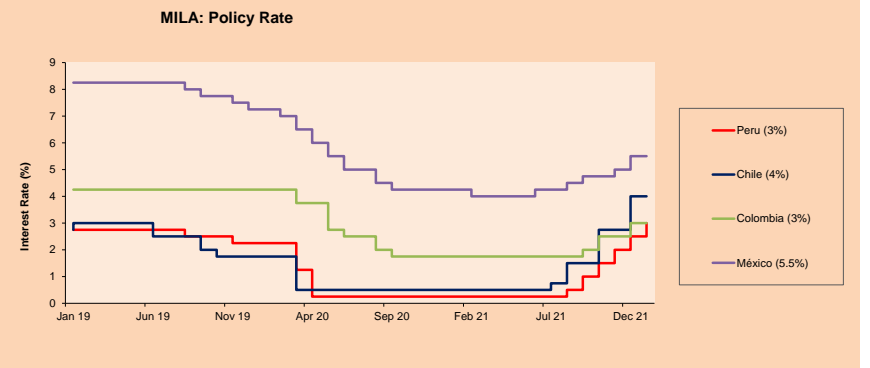
Mexico: The IPC index closed the day with a negative return of -0.69%. The sectors that lost the most of the day were Materials (-1.47%) and Real estate (-1.16%). The worst performing stocks were CEMEX SAB-CPO (-2.17%) and REGIONAL SAB DE CV (-2.01%). Headline: Energy posts its highest increase for a December month since 2018



Base: 14/07/21=100

Source: Bloomberg

ETFs	Curr.	Close	1D	5D	30 D	YTD	Exchange
▼ iShares MSCI All Peru Caped Index Fund	USD	31.61	-0.03%	5.00%	10.18%	6.72%	NYSE Arca
▼ iShares MSCI All Chile Caped Index Fund	USD	23.6	-0.25%	1.77%	-6.72%	2.21%	Cboe BZX
▼ Global X MSCI Colombia	USD	9.8347	-0.35%	-1.85%	-2.92%	-1.59%	NYSE Arca
▼ iShares MSCI Mexico Capped	USD	50.44	-0.63%	0.04%	4.91%	-0.32%	NYSE Arca
- iShares MSCI Emerging Markets	USD	48.89	0.00%	-0.63%	-2.38%	0.08%	NYSE Arca
▲ Vanguard FTSE Emerging Markets	USD	49.5	0.20%	-0.62%	-1.45%	0.08%	NYSE Arca
▲ iShares Core MSCI Emerginq Markets	USD	59.78	-0.08%	-0.71%	-2.99%	-0.13%	NYSE Arca
▲ iShares JP Morgan Emerging Markets Bonds	USD	62.86	0.02%	0.05%	-0.44%	0.06%	Cboe BZX
▲ Morgan Stanley Emerging Markets Domestic	USD	5.48	0.37%	0.37%	-1.44%	0.00%	New York



Source: Bloomberg

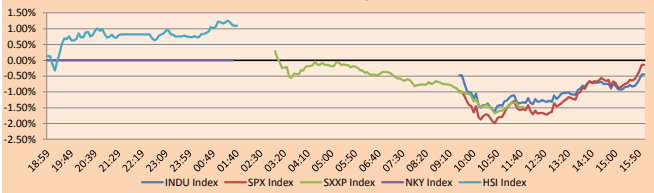
Capital Market Laboratory Coordinator: Economist Bruno Bellido
Collaboration: Sebastian Ore, Ariam Loayza, Miguel Solimano y Jhonatan Cueva
email: pulsobursatil@ulima.edu.pe
facebook: www.facebook.com/pulsobursatil

WORLD

Main Indices	Close	1 D*	5 D*	1 M*	YTD*	Market Cap. (US\$ Mill.)
▼ Dow Jones (USA)	36,068.87	-0.45%	-1.41%	-4.69%	-5.70%	10,965,038
▼ Standard & Poor's 500 (EEUU)	4,670.29	-0.14%	-2.63%	-6.94%	-7.73%	38,775,083
▲ NASDAQ Composite (USA)	14,942.83	0.05%	-5.62%	-12.04%	-11.99%	23,480,623
▼ Stoxx EUROPE 600 (Europe)	479.04	-1.48%	-2.23%	-1.67%	-2.74%	11,637,064
▼ DAX (Germany)	15,768.27	-1.13%	-1.58%	-0.97%	-1.77%	1,471,196
▼ FTSE 100 (United Kingdom)	7,445.25	-0.53%	0.82%	1.69%	1.48%	1,586,218
▼ CAC 40 (France)	7,115.77	-1.44%	-1.41%	-0.25%	-1.18%	2,038,796
▼ IBEX 35 (Spain)	8,706.90	-0.51%	-0.62%	1.53%	-0.22%	515,237
▲ MSCI AC Asia Pacific Index	193.17	0.49%	0.10%	-0.18%	-0.64%	25,415,740
▲ HANG SENG (Hong Kong)	23,746.54	1.08%	2.03%	7.50%	6.70%	4,105,225
▲ SHANGHAI SE Comp. (China)	3,593.52	0.39%	-1.27%	-2.64%	-3.22%	7,304,012
▲ NIKKEI 225 (Japan)	28,478.56	-0.03%	-1.48%	-4.38%	-4.41%	4,023,335
▼ S&P / ASX 200 (Australia)	7,447.07	-0.08%	0.03%	-3.29%	-3.61%	1,700,377
▼ KOSPI (South Korea)	2,926.72	-0.69%	-0.20%	-5.91%	-4.81%	1,691,786

*Legend: Variation 1D: 1 Day; 5D: 5 Days; 1M: 1 Month; YTD: Var.% 12/31/20 to date

Global Markets: Intraday Evolution (var %)

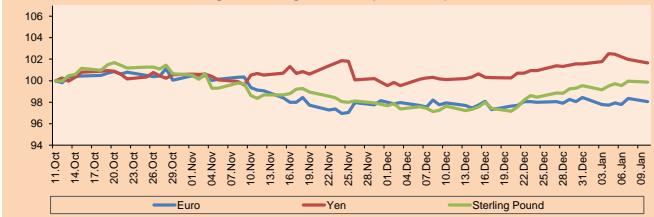


Source: Bloomberg

Currency	Price	1 D*	5 D*	1 M*	YTD*
▼ Euro	1.1326	-0.30%	0.26%	0.11%	-0.39%
▼ Yen	115.2000	-0.31%	-0.10%	1.55%	0.10%
▼ Sterling Pound	1.3577	-0.08%	0.72%	2.29%	0.33%
▼ Yuan	6.3762	-0.03%	0.32%	0.10%	0.32%
▼ Hong Kong Dollar	7.7950	-0.03%	-0.03%	-0.05%	-0.02%
▲ Brazilian Real	5.6701	0.64%	-0.09%	1.09%	1.69%
▲ Argentine Peso	103.4978	0.20%	0.48%	1.92%	0.74%

*Legend: Variation 1D: 1 Day; 5D: 5 Days; 1M: 1 Month; YTD: Var.% 12/31/20 to date

Foreign Exchange Indices (3 months)



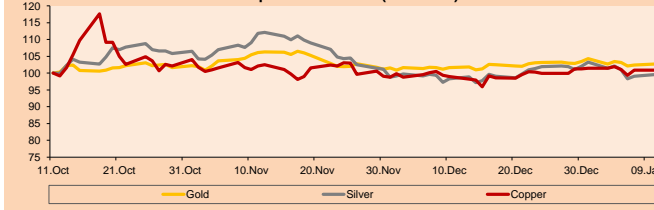
Base: 11/10/21=100

Source: Bloomberg

Commodities	Close	1 D*	5 D*	1 M*	YTD*
▲ Oro (US\$ Oz. T) (LME)	1,801.68	0.29%	0.01%	1.06%	-1.50%
▲ Plata (US\$ Oz. T) (LME)	22.47	0.45%	-1.88%	1.23%	-3.60%
- Cobre (US\$ TM) (LME)	9,692.00	0.00%	-0.50%	1.95%	-0.50%
- Zinc (US\$ TM) (LME)	3,560.55	0.00%	-0.82%	6.18%	-0.82%
▼ Petróleo WTI (US\$ Barril) (NYM)	78.23	-0.85%	2.83%	9.44%	4.47%
▼ Estación (US\$ TM) (LME)	40,256.00	0.00%	2.24%	1.09%	-1.24%
▼ Plomo (US\$ TM) (LME)	2,292.75	0.00%	-1.92%	-0.54%	-1.24%
▼ Azúcar #11 (US\$ Libra) (NYB-ICE)	17.83	-1.22%	-4.86%	-9.54%	-5.56%
▼ Cacao (US\$ TM) (NYB-ICE)	2,521.00	0.00%	0.88%	2.23%	0.04%
▼ Café Arábica (US\$ TM) (NYB-ICE)	234.90	-1.49%	5.19%	0.99%	3.89%

*Leyenda: Variación 1D: 1 Día; 5D: 5 Días; 1M: 1 Mes; YTD: Var.% 31/12/20 a la fecha

Principal Metals Index (3 months)



Base: 11/10/21=100

Source: Bloomberg

Equity

Germany (Stocks from DAX Index)

Largest gains	Curr.	Price	▲%	Exchange	Largest losses	Curr.	Price	▼%	Exchange
FME GY	EUR	57.66	2.05	Xetra	HFG GY	EUR	56.66	-4.52	Xetra
FRE GY	EUR	36.555	1.98	Xetra	MRK GY	EUR	198.15	-4.51	Xetra
HEN3 GY	EUR	75.54	1.81	Xetra	DTE GY	EUR	15.528	-4.02	Xetra
BMW GY	EUR	97.2	1.67	Xetra	DPW GY	EUR	53.51	-4.00	Xetra

Europe (Stocks from STOXX EUROPE 600)

Largest gains	Curr.	Price	▲%	Exchange	Largest losses	Curr.	Price	▼%	Exchange
DTG GY	EUR	33.49	3.97	Xetra	WISE LN	Gbp	606.4	-10.67	Londres
ELIS FP	EUR	16.16	3.13	EN Paris	NIBEB SS	SEK	109.75	-9.86	Stockholm
LIFP	EUR	22.94	3.01	EN Paris	LIFCOB SS	SEK	223.2	-9.42	Stockholm
TEF SQ	EUR	4.024	2.94	Soc.Bol SIBE	ALIFB SS	SEK	292	-8.92	Stockholm

Global Overview:

United States:

Major U.S. indices closed the day with mixed performances, due to higher expectations by investors for a much faster than expected rate hike, as well as increased wage and rising inflation. On the indexes side, the DOW JONES closed lower, with 17 of its 30 stocks with negative returns, as a result of a massive sell-off during the session generated by increased fears of the withdrawal of monetary stimulus. Similarly, the S&P 500 posted negative returns, dragged down by the Industrials -1.15% and Materials -0.99% sectors, as growth stocks slumped after investors began to recalibrate their portfolios and take into consideration a more aggressive policy from the FED. On the other hand, the NASDAQ closed the session with a positive sign and managed to recover at the end of the day, as the rate hike raises the opportunity costs for companies with long term profits which strongly exposed its huge valuations, however, this improved as the yield of the 10-year bond remained below 1.8%. Thus, DOW JONES -0.45%; S&P 500 -0.14% and NASDAQ -0.07%. ended the day with mixed results.

Europe:

Major European indices ended the session with negative returns, posting their biggest one-day decline since late November, as rising bond yields weighed on the technology sector. The pan-European STOXX 600 index ended with losses as concerns over inflation, COVID-19 and the central bank tightening cycle clouded the equity outlook for 2022. The UK market, reflected in the FTSE 100, ended lower as householders were hit by costs of \$5.4 billion to remove cladding from buildings. The housing minister set a deadline in early March for the sector to agree a fully funded action plan, including a dedicated fund to deal with unsafe cladding following the 2017 Grenfell tragedy. Meanwhile, the DAX index closed in negative territory following the results of a survey conducted by the Ifo Institute for Economic Research. It found that, of the 9,100 companies surveyed, 14% fear for their survival as a result of the spread of the pandemic. The French market fell this session after the CGT union, one of its main labor unions, said there would be a strike in the energy and mining sectors starting January 25. Thus, FTSE 100 -0.53%; CAC 40 -1.44%; DAX -1.13%; STOXX 600 -1.48% ended at negative levels.

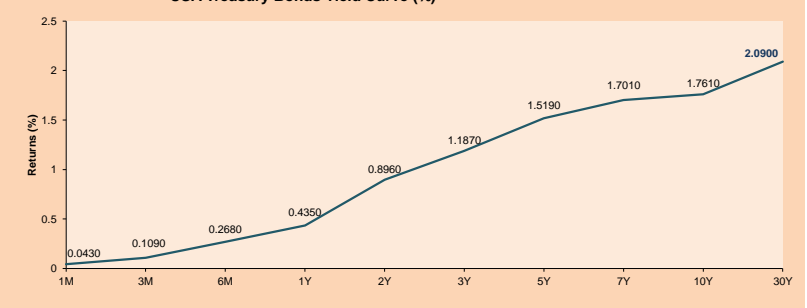
Asia:

The main Asian indexes closed with mixed results amid an interest rate hike, where investors are awaiting data on U.S. inflation, which will be reported later in the week. Likewise, Chinese stocks end with positive performances, due to gains in companies related to the healthcare sector +1.08% and the consumer staples sector +0.88%. Similarly, the Hong Kong index closed higher, finding itself as one of the best performers in the Asian market, due to the boost provided by the technology giants where an increase of around 2.2% was obtained by this sector. On the other hand, the Japanese market did not trade due to the celebration of Adult Day. On the other hand, South Korea's KOSPI index registered losses, which were dragged down by expectations of a faster-than-expected interest rate hike by the U.S. Federal Reserve. Similarly, Australian shares closed lower, after the Omicron variant caused the country to pass the one million mark in the number of infected people, which affected the healthcare infrastructure and supply chains. Thus, HANG SENG +1.08%; CSI 300 +0.45%; S&P/ASX 200 -0.08%; KOSPI -0.95% ended with mixed performances.

ETFs

ETFs	Curr.	Close	1D	5D	30 D	YTD	Exchange
SPDR S&P 500 ETF TRUST	USD	465.51	-0.12%	-2.55%	-1.11%	-1.99%	NYSE Arca
ISHARES MSCI EMERGING MARKET	USD	48.89	0.00%	-0.63%	-2.38%	0.08%	NYSE Arca
ISHARES IBXX HIGH YLD CORP	USD	85.94	0.08%	-1.18%	-0.80%	-1.23%	NYSE Arca
FINANCIAL SELECT SECTOR SPDR	USD	41.03	-0.34%	3.79%	5.07%	5.07%	NYSE Arca
VANECK GOLD MINERS ETF	USD	30.51	1.67%	-2.37%	0.07%	-4.75%	NYSE Arca
ISHARES RUSSELL 2000 ETF	USD	215.32	-0.35%	-4.44%	-2.09%	-3.21%	NYSE Arca
SPDR GOLD SHARES	USD	168.26	0.30%	-0.04%	1.01%	-1.58%	NYSE Arca
ISHARES 20+ YEAR TREASURY BO	USD	142.61	0.25%	-1.17%	-4.20%	-3.77%	NASDAQ GM
INVESCO QQQ TRUST SERIES 1	USD	380.11	0.07%	-5.37%	-4.50%	-4.46%	NASDAQ GM
ISHARES BIOTECHNOLOGY ETF	USD	142.16	1.15%	-6.70%	-3.45%	-6.85%	NASDAQ GM
ENERGY SELECT SECTOR SPDR	USD	61.15	-0.31%	6.87%	6.83%	10.18%	NYSE Arca
PROSHARES ULTRA VIX ST FUTUR	USD	12.35	-2.49%	4.57%	-17.23%	-0.64%	Cboe BZX
UNITED STATES OIL FUND LP	USD	56.16	-0.90%	2.43%	7.94%	3.31%	NYSE Arca
ISHARES MSCI BRAZIL ETF	USD	25.99	-0.03%	-1.35%	-12.03%	-3.85%	NYSE Arca
SPDR S&P OIL & GAS EXP & PR	USD	104.05	-0.62%	3.81%	2.45%	8.53%	NYSE Arca
UTILITIES SELECT SECTOR SPDR	USD	69.95	-0.65%	-1.30%	1.16%	-2.28%	NYSE Arca
ISHARES US REAL ESTATE ETF	USD	110.30	-0.51%	-4.30%	-0.79%	-5.03%	NYSE Arca
SPDR S&P BIOTECH ETF	USD	103.14	0.15%	-10.65%	-6.16%	-7.88%	NYSE Arca
ISHARES IBXX INVESTMENT GRA	USD	129.60	-0.09%	-1.15%	-2.40%	-2.20%	NYSE Arca
ISHARES JP MORGAN US EMERGI	USD	106.22	-0.34%	-1.63%	-2.65%	-2.60%	NASDAQ GM
REAL ESTATE SELECT SECT SPDR	USD	48.98	-0.59%	-4.58%	-0.43%	-5.46%	NYSE Arca
ISHARES CHINA LARGE-CAP ETF	USD	36.65	0.05%	0.27%	-5.69%	0.19%	NYSE Arca
CONSUMER STAPLES SPDR	USD	78.81	-0.79%	-0.38%	3.53%	-0.39%	NYSE Arca
VANECK JUNIOR GOLD MINERS	USD	39.62	0.97%	-3.44%	-2.34%	-5.51%	NYSE Arca
SPDR BLOOMBERG HIGH YIELD BO	USD	107.21	0.01%	-1.19%	-0.80%	-1.25%	NYSE Arca
VANGUARD REAL ESTATE ETF	USD	110.39	-0.58%	-4.09%	-0.33%	-4.84%	NYSE Arca
GRAYSCALE BITCOIN TRUST BTC	USD	30.17	-1.84%	-11.96%	-19.07%	-11.91%	OTC US

USA Treasury Bonds Yield Curve (%)



Source: Bloomberg

LIMA

Stocks

Ticker	Currency	Price	1D*	5D*	30D*	YTD*	Frequency	Volume (US\$)	Beta	Dividend Yield (%)	Price Earning	Market Cap. (M US\$)	Economic Sector*	Index Weight
▲ ALICORC1 PE**	S/.	6.51	0.09%	7.08%	9.77%	7.27%	90.00%	695,402	0.85	12.83	16.39	1,410.87	Industrial	3.53%
▼ ATACOCB1 PE**	S/.	0.14	-3.57%	12.50%	-2.17%	12.50%	55.00%	11,528	1.09	0.00	-	32.42	Mining	1.02%
▼ BACKUS11 PE**	S/.	21.15	-0.24%	2.67%	-5.54%	3.17%	90.00%	9,387	0.71	14.73	8.00	7,205.45	Industrial	0.82%
▼ BAP PE**	US\$	131.80	-2.01%	6.55%	17.16%	6.48%	95.00%	320,346	1.30	0.92	-	12,439.59	Diverse	5.82%
▲ BVN PE**	US\$	7.55	1.21%	3.42%	5.74%	3.42%	100.00%	413,585	1.27	0.00	-	2,077.47	Mining	5.88%
▲ CASAGRC1 PE**	S/.	16.17	65.85%	79.67%	107.31%	77.69%	95.00%	421,346	1.04	6.09	11.01	346.26	Agricultural	1.31%
▼ BVVAC1 PE**	S/.	1.80	-2.17%	-0.55%	-0.55%	-0.55%	100.00%	370,768	0.90	2.52	14.14	3,092.57	Finance	2.85%
▲ CORAREI1 PE**	S/.	1.93	2.66%	11.56%	11.56%	12.21%	95.00%	180,837	0.86	14.28	2.82	568.37	Industrial	1.72%
▼ CPACASC1 PE**	S/.	5.00	-0.40%	2.25%	3.52%	1.01%	100.00%	277,351	0.65	15.80	35.71	588.94	Industrial	2.38%
▲ CVERDEC1 PE**	US\$	45.00	2.86%	20.97%	30.06%	20.87%	100.00%	5,090,532	1.20	4.44	16.03	15,752.52	Mining	5.25%
- ENGPEEC1 PE**	S/.	2.10	0.00%	-4.11%	-5.83%	1.45%	55.00%	55,986	0.67	0.00	9.58	1,278.87	Public Services	1.44%
- ENDISPC1**	S/.	4.10	0.00%	2.50%	-3.98%	2.50%	30.00%	1,529	0.79	0.00	8.79	665.56	Public Services	0.98%
- FERREYC1 PE**	S/.	2.27	0.00%	4.61%	22.70%	10.73%	100.00%	1,547,937	1.05	8.67	7.04	563.03	Diverse	4.90%
- AENZAC1 PE**	S/.	1.52	0.00%	4.83%	3.40%	10.95%	80.00%	236,885	1.14	0.00	-	336.91	Diverse	4.05%
▲ IFS PE**	US\$	28.20	1.44%	6.54%	16.53%	5.03%	90.00%	72,522	1.20	5.04	7.09	3,255.63	Diverse	7.22%
- INRETC1 PE**	US\$	36.90	0.00%	5.43%	6.96%	5.58%	95.00%	566,932	0.85	3.69	73.29	3,793.59	Diverse	5.28%
▼ LUSURC1 PE**	S/.	14.25	-0.35%	0.07%	-1.72%	0.07%	50.00%	1,293	#N/A N/A	6.77	13.46	1,764.00	Public Services	1.81%
▲ MINSURI1 PE**	S/.	4.65	3.33%	15.10%	22.05%	17.72%	95.00%	231,686	0.98	14.79	3.82	3,407.98	Mining	3.09%
- PML PE**	US\$	0.13	0.00%	8.47%	-8.57%	8.47%	25.00%	4,062	1.25	0.00	-	33.84	Mining	2.12%
▼ SCCO PE**	US\$	63.50	-0.78%	3.15%	4.32%	2.78%	80.00%	23,633	0.90	5.04	15.67	49,090.66	Mining	2.14%
▲ SIDERC1 PE**	S/.	1.74	1.75%	12.99%	4.82%	8.75%	90.00%	15,418	0.86	25.44	4.03	309.63	Industrial	1.43%
▼ TV PE**	US\$	1.38	-3.50%	6.15%	10.40%	6.15%	75.00%	5,417	1.22	0.00	-	136.49	Mining	2.93%
▼ UNACEMC1 PE**	S/.	2.40	-0.41%	1.69%	0.84%	0.00%	100.00%	532,975	0.91	4.42	10.29	1,109.26	Industrial	3.00%
▼ VOLCABC1 PE**	S/.	0.70	-2.78%	14.75%	20.69%	16.67%	95.00%	529,296	1.56	0.00	-	725.42	Mining	5.90%
- NEXAPEEC1 PE**	S/.	3.77	0.00%	5.90%	5.90%	5.90%	50.00%	3,763	1.14	0.00	11.16	1,215.87	Mining	1.56%

Quantity of shares: 25
Source: Bloomberg, Económica
* Bloomberg Industry Classification System
** PER is used in the stock market and original currency of the instrument
*Legend: Variation 1D: 1 Day; 5D: 5 Days, 1M: 1 Month; YTD: Var.% 12/31/20 to date

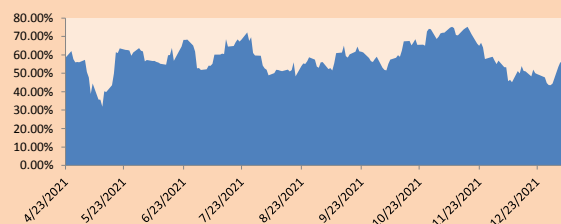
Sectorial Indices

	Close	1D*	5D*	30D*	YTD*	Beta
▲ S&P/BVLMining	430.80	0.01%	4.79%	5.90%	4.66%	0.85
▲ S&P/BVLConsumer	1,235.11	1.56%	7.52%	10.72%	7.59%	0.74
▼ S&P/BVLIndustrials	273.09	-0.05%	3.85%	7.83%	5.82%	0.78
▼ S&P/BVLFinancials	947.59	-1.61%	4.87%	13.20%	4.58%	1.26
▼ S&P/BVLConstruction	294.94	-0.07%	3.57%	3.12%	4.08%	0.69
- S&P/BVLPublicSvcs	555.72	0.00%	-0.47%	-1.29%	1.32%	0.26
- S&P/BVLElectricUtil	542.52	0.00%	-0.47%	-1.29%	1.32%	0.26

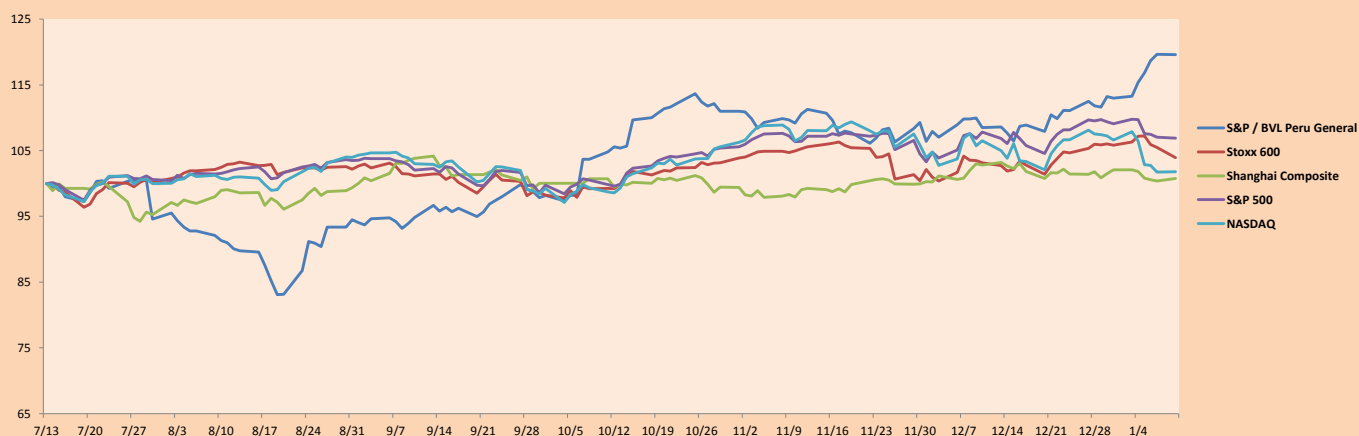
S&P/BVLConstructionTRPEN

*Legend: Variation 1D: 1 Day; 5D: 5 Days, 1M: 1 Month; YTD: Var.% 12/31/20 to date

Correlation Graph of Returns of Mining Index against Metallic Index of London (3 months)



Indices (6 months)



Base: 13/07/21=100
Source: Bloomberg

Capital Market Laboratory Coordinator: Economist Bruno Bellido
Collaboration: Sebastian Ore, Ariam Loayza, Miguel Solimano y Jhonatan Cueva
email: pulsobursatil@ulima.edu.pe
facebook: www.facebook.com/pulsobursatil.ul

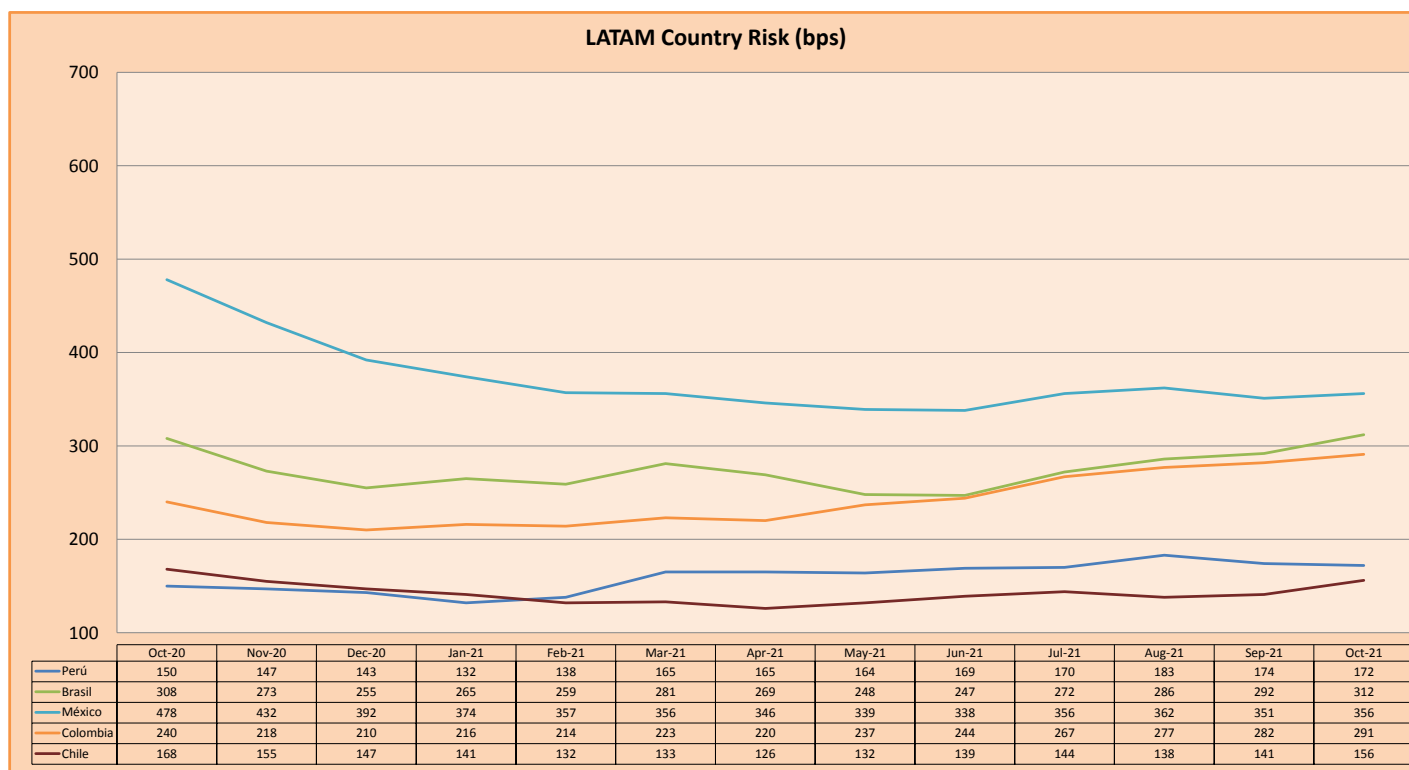
SOVEREIGN RATING

RISK RATINGS			
Moody's	S&P	Fitch	
Aaa	AAA	AAA	Prime
Aa1	AA+	AA+	High credit quality
Aa2	AA	AA	
Aa3	AA-	AA-	
A1	A+	A+	Medium-high grade, with low credit risk
A2	A	A	
A3	A-	A-	
Baa1	BBB+	BBB+	Moderate Credit Risk
Baa2	BBB	BBB	
Baa3	BBB-	BBB-	
Ba1	BB+	BB+	It has speculative elements and it is subject to substantial credit risk
Ba2	BB	BB	
Ba3	BB-	BB-	
B1	B+	B+	It is considered speculative and it has high credit risk
B2	B	B	
B3	B-	B-	
Caa1	CCC+		Bad credit conditions and it is subject to high credit risk
Caa2	CCC		
Caa3	CCC-	CCC	
Ca	C		Very close to default or in default
		DDD	
C	D	DD D	

Source: Bloomberg

Latin America Credit Rating			
Clasificadora de riesgo			
Country	Moody's	Fitch	S&P
Peru	Baa1	BBB	BBB+
México	Ba2	BB-	BB-
Venezuela	C	WD	NR
Brazil	Ba2	BB-	BB-
Colombia	Baa2	BB+	BB+
Chile	A1	A-	A
Argentine	Ca	WD	CCC+
Panama	Baa2	BBB-	BBB

Source: Bloomberg



Source: BCRP

Capital Market Laboratory Coordinator: Economist Bruno Bellido
Collaboration: Sebastian Ore, Ariam Loayza, Miguel Solimano y Jhonatan Cueva
email: pulsobursatil@ulima.edu.pe
facebook: www.facebook.com/pulsobursatil.ul