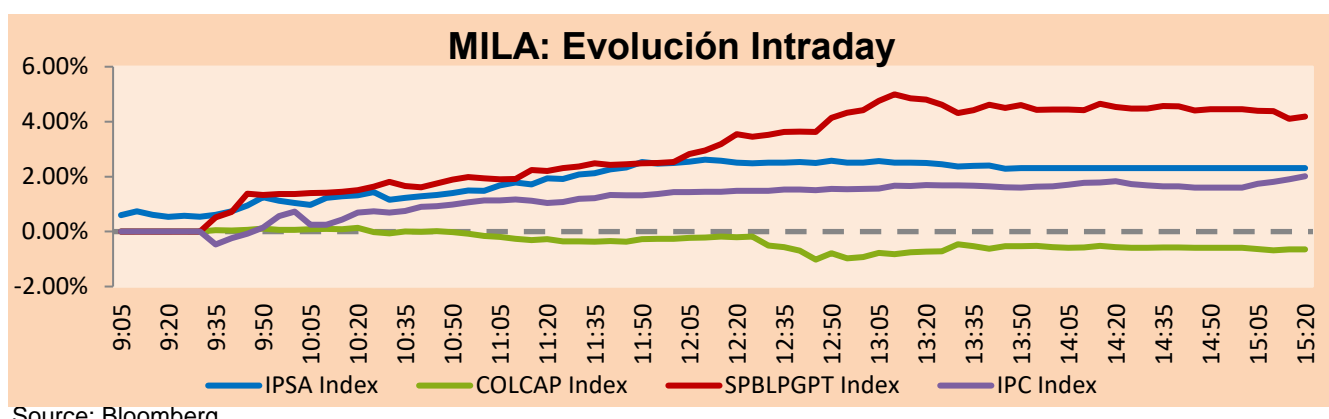


## MILA

Lima, February 8, 2022

Main Indexes	Close	1 D	5 D	1 M	YTD	Cap. Burs. (US\$ bill)
▲ IPSA (Chile)	4,582.62	2.43%	-0.35%	6.66%	6.37%	98.77
▲ IGPA (Chile)	22,950.07	2.05%	-0.38%	6.87%	6.41%	119.42
▼ COLCAP (Colombia)	1,047.65	-0.01%	-1.18%	7.72%	7.66%	6.32
▼ COLCAP (Colombia)	1,523.73	-0.64%	-0.93%	9.29%	7.99%	85.32
▲ S&P/BVL (Perú)*	23,473.83	4.54%	3.43%	5.00%	11.19%	105.41
▲ S&P/BVL SEL (Perú)	623.50	4.30%	2.95%	4.49%	10.64%	95.73
▲ S&P/BVL LIMA 25	34,153.72	4.04%	2.59%	4.14%	12.82%	104.11
▲ IPC (México)	52,294.58	2.03%	1.88%	-1.71%	-1.84%	309.79
▲ S&P MILA 40	497.38	2.13%	-0.69%	9.44%	11.81%	6,386.23

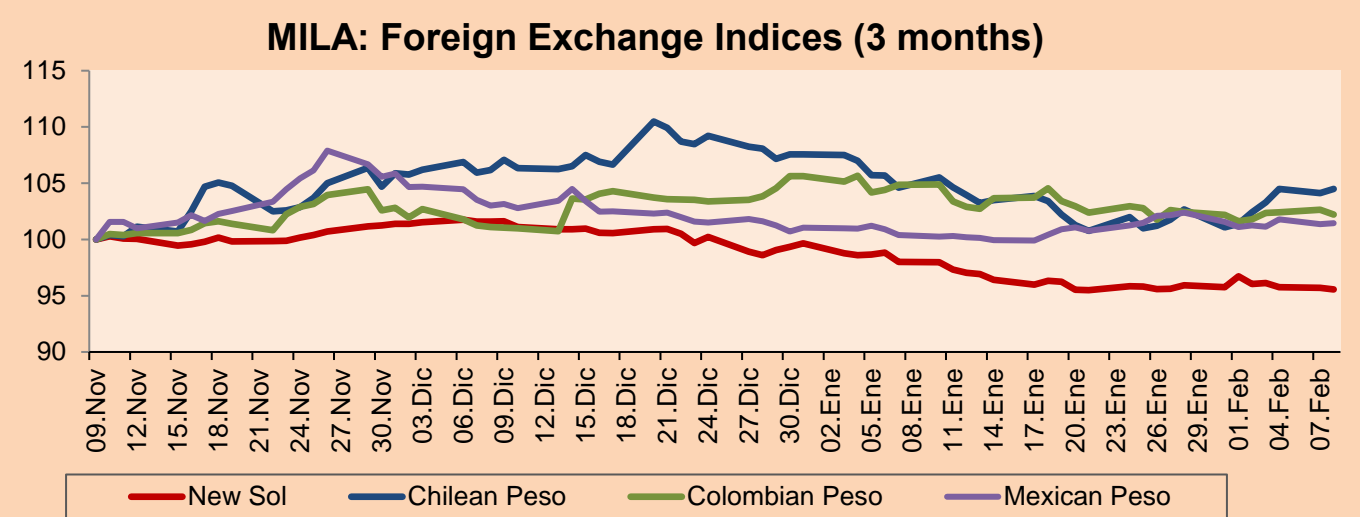
\*Legend: Variation 1D: 1 day; 5D: 5 days; 1M: 1 Month; YTD: Var% 12/31/21 to date



Source: Bloomberg

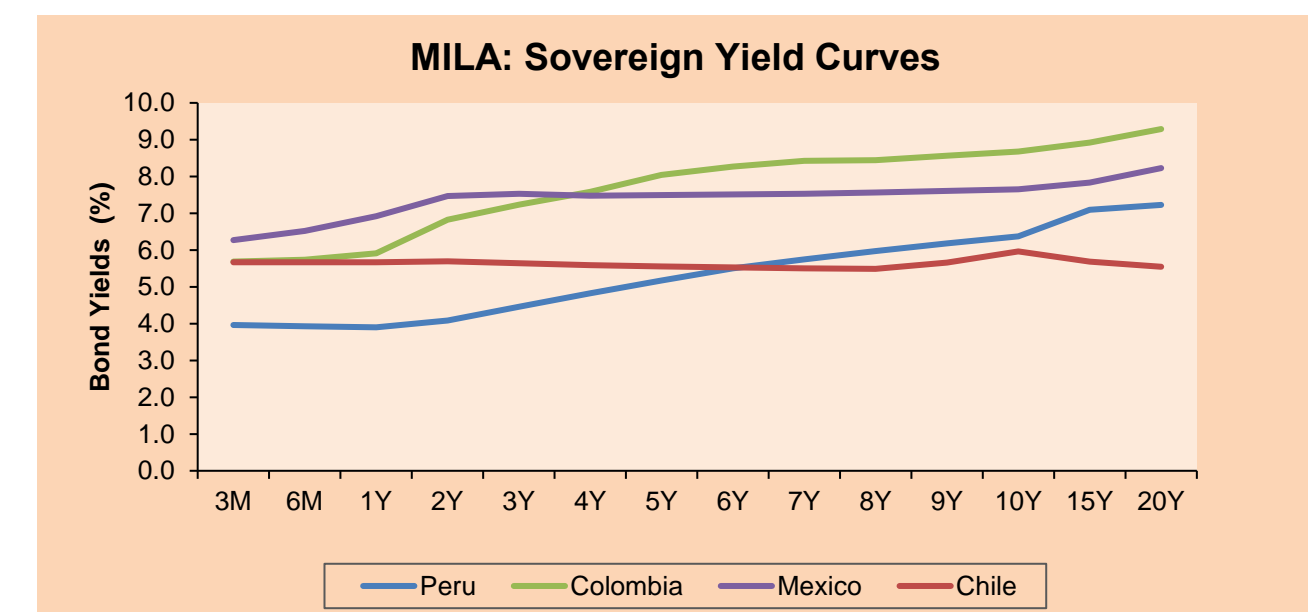
Currency	Price	1D*	5D*	30 D*	YTD*
▼ Sol (PEN)	3,836.5	-0.15%	-1.19%	-2.51%	-4.07%
▲ Chilean Peso (CLP)	827.64	0.34%	3.04%	-0.12%	-2.86%
▼ Colombian Peso (COP)	3,948.21	-0.43%	0.58%	-2.54%	-3.24%
▲ Mexican Peso (MXN)	20.61	0.10%	0.35%	1.05%	0.42%

\*Legend: Variation 1D: 1 day; 5D: 5 days; 1M: 1 Month; YTD: Var% 12/31/21 to date



Base: 09/11/21=100  
Source: Bloomberg

Fixed Income	Currency	Price	Bid Yield (%)	Ask Yield (%)	Duration
PERU 7.35 07/21/25	USD	116.355	2.43	2.33	3.10
PERU 4.125 08/25/27	USD	106.672	2.84	2.79	4.90
PERU 8.75 11/21/33	USD	148.758	3.65	3.60	8.17
PERU 6.55 03/14/37	USD	128.476	4.04	3.99	9.70
PERU 5.625 11/18/2050	USD	127.631	4.02	3.98	15.81
CHILE 2.25 10/30/22	USD	100.791	1.40	0.89	0.71
CHILE 3.125 01/21/26	USD	102.836	2.42	2.32	3.72
CHILE 3.625 10/30/42	USD	97.539	3.81	3.78	14.46
COLOM 11.85 03/09/28	USD	147.426	3.29	3.12	4.59
COLOM 10.375 01/28/33	USD	137.195	5.85	5.66	7.25
COLOM 7.375 09/18/37	USD	111.945	6.21	6.13	9.37
COLOM 6.125 01/18/41	USD	98.047	6.34	6.27	11.07
MEX 4 10/02/23	USD	104.529	1.37	1.16	1.62
MEX5.55 01/45	USD	110.913	4.78	4.74	13.54



Source: Bloomberg

## Equity

Largest gains	Exchange	Currency	Price	▲%
CRECORP LTD	Peru	USD	145.81	7.77
VOLCAN CIA MIN-B	Peru	PEN	0.72	7.46
BUENAVENTURA-ADR	Peru	USD	8.88	7.12
EMPRESAS COPEC	Chile	CLP	6690.00	6.02
GRUPO AEROPORTUA	Mexico	MXN	147.94	5.88

Per Turnover	Exchange	Amount (US\$)
GRUPO F BANORT-O	Mexico	81,310,527
WALMART DE MEXIC	Mexico	63,614,623
AMERICA MOVIL-L	Mexico	48,366,968
GRUPO MEXICO-B	Mexico	26,885,901
SOQUIMICH-B	Chile	26,151,261

Largest losses	Exchange	Currency	Price	▼%
MEGACABLE-CPO	Mexico	MXN	64.16	-3.68
TRUST FIBRA UNO	Mexico	MXN	20.75	-2.95
FIBRA TERRA	Mexico	MXN	28.03	-2.23
BANCO DAVIVIENDA	Colombia	COP	31500	-1.53
AGUAS ANDINAS-A	Chile	CLP	177	-1.50

Per Volume	Exchange	Volume
ITAU CORPBANCA	Chile	746,932,758
BANCO SANTANDER	Chile	133,384,878
BANCO DE CHILE	Chile	107,818,161
AMERICA MOVIL-L	Mexico	52,360,786
ENEL AMERICAS SA	Chile	51,818,828

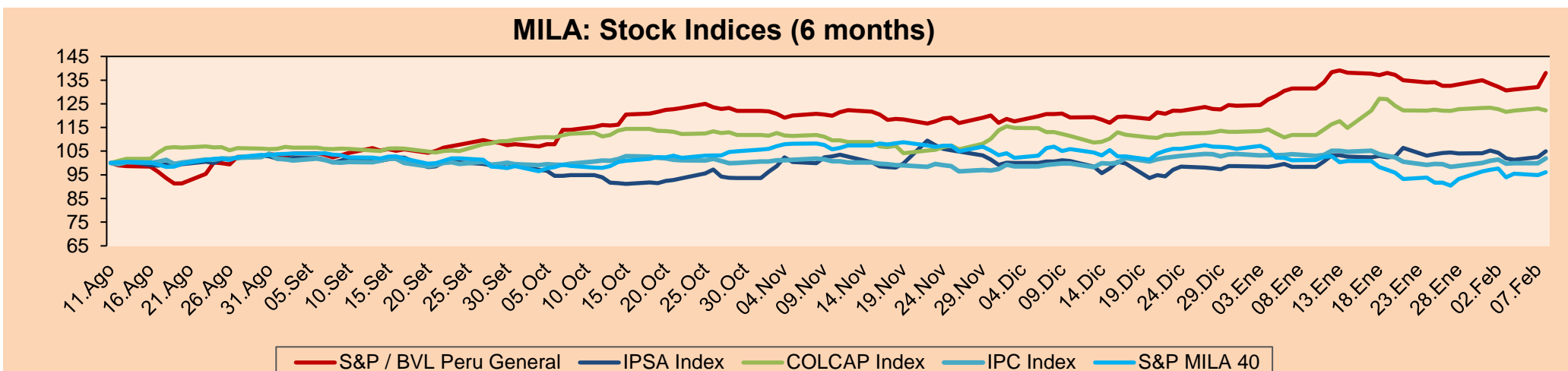
## MILA:

Peru: The BVL General Index ended today's session with a significant positive result of +4.54%. The index maintains an annual cumulative positive trend of +11.19% in local currency, while the dollar-adjusted performance amounted to +15.90%. Then, the S&P / BVL Peru SEL varied by +4.31% while the S&P / BVL LIMA 25 by +4.04%. The spot PEN reached S/. 3.8365. Headline: Newmont acquires Buenaventura shares in Yanacocha.

Chile: The IPSA index ended the day with a positive return of +2.43%. The most benefited sectors of the day were Energy (+6.02) and Finance (+4.33%). The best performing stocks were Grupo Security SA (+7.44%) and Empresas Copec SA (+6.02%). Headline: Strong increase of the IPC in January consolidates expectations that the key interest rate will remain at a 13-year high.

Colombia: The COLCAP index ended the day with a negative return of -0.64%. The sectors that lost the most during the day were Non-Basic Consumer Products (-1.43%) and Financials (+1.13%). The worst performing stocks were Bancolombia SA (-2.75%) and Banco Davivienda (-1.53%). Headline: Consumer confidence fell 6.5 points between December and January.

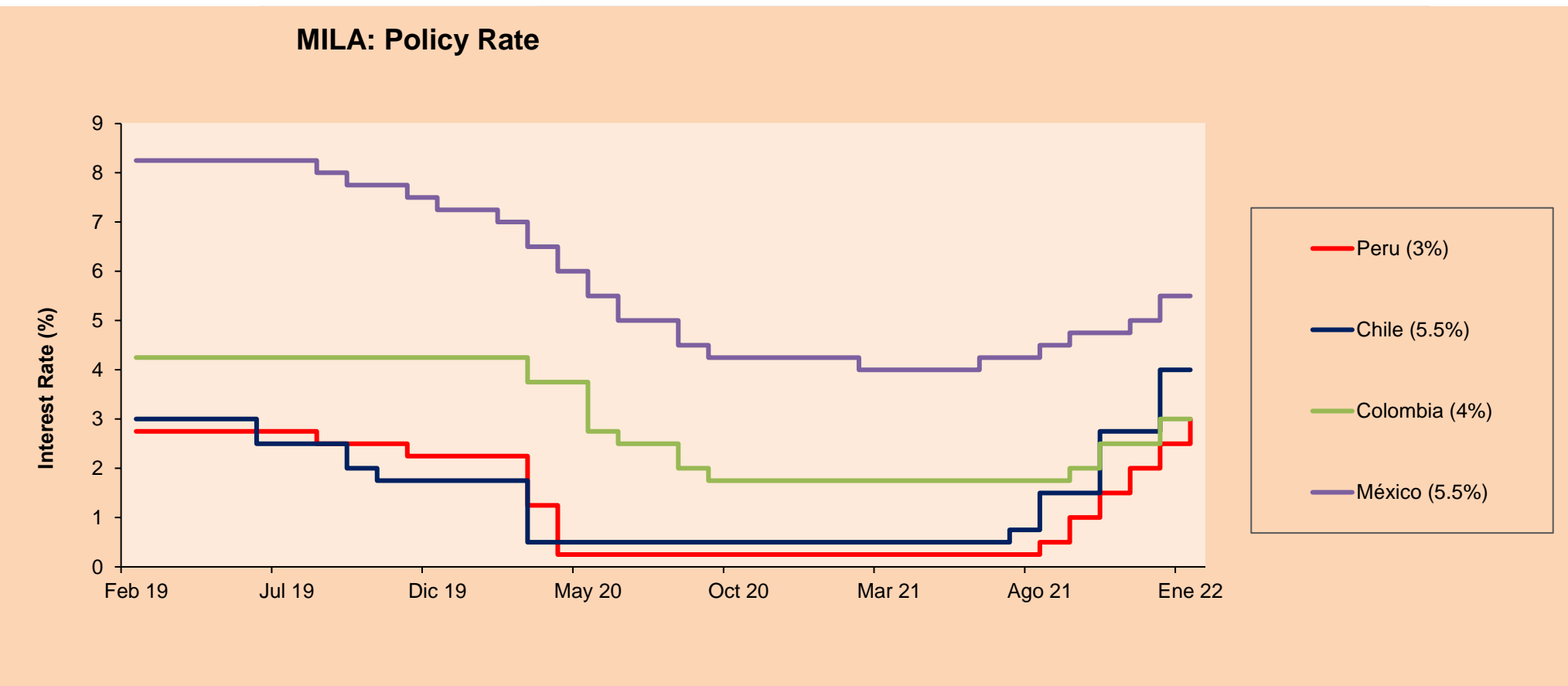
Mexico: The MEXBOL index closed the session with a positive result of +2.03%. The best performing sectors of the day were Industrials (+3.80%) and Financials (+2.62%). The best performing stocks were Grupo Aeropuerto del Cent (+5.88%) and Controladora Vuela CIA (+5.44%). Headline: Trade between Mexico and the US closed 2021 at an all-time high: 661 million 164 million dollars.



Base: 12/08/21=100  
Source: Bloomberg

## ETFs

ETFs	Curr.	Close	1D	5D	30 D	YTD	Exchange
▲ iShares MSCI All Peru Caped Index Fund	USD	33.19	3.98%	3.20%	4.97%	12.05%	NYSE Arca
▲ iShares MSCI All Chile Caped Index Fund	USD	25.36	1.60%	-3.83%	7.19%	9.83%	Cboe BZX
▲ Global X MSCI Colombia	USD	10.865	0.05%	-1.76%	10.09%	8.73%	NYSE Arca
▲ iShares MSCI Mexico Capped	USD	49.4	2.30%	0.45%	-2.68%	-2.37%	NYSE Arca
▲ iShares MSCI Emerging Markets	USD	49.03	0.97%	-0.22%	0.29%	0.37%	NYSE Arca
▲ Vanguard FTSE Emerging Markets	USD	49.93	0.91%	-0.06%	1.07%	0.95%	NYSE Arca
▲ iShares Core MSCI Emerging Markets	USD	59.86	0.86%	-0.10%	0.05%	0.00%	NYSE Arca
▲ iShares JP Morgan Emerging Markets Bonds	USD	62.89	0.79%	0.62%	0.06%	0.11%	Cboe BZX
- Morgan Stanley Emerging Markets Domestic	USD	5.46	0.00%	-0.18%	0.00%	-0.36%	New York



Source: Bloomberg



# LIMA

## Stocks

Ticker	Currency	Price	1D*	5D*	30D*	YTD*	Frequency	Volume (US\$)	Beta	Dividend Yield (%)	Price Earning	Market Cap. (M US\$)	Economic Sector*	Index Weight
▲ ALICORC1 PE**	S/.	6.75	2.74%	-2.17%	1.81%	11.57%	100.00%	665,391	0.76	12.37	16.20	1,499.52	Industrial	3.53%
- ATACOCB1 PE**	S/.	0.13	0.00%	-7.14%	-7.14%	8.33%	50.00%	3,599	1.08	0.00	-	31.52	Mining	1.02%
▲ BACKUSI1 PE**	S/.	23.20	0.43%	5.45%	9.43%	13.17%	80.00%	52,860	0.70	13.43	8.55	7,717.43	Industrial	0.82%
▲ BAP PE**	US\$	145.81	7.77%	4.49%	8.41%	17.80%	100.00%	4,024,712	1.18	0.84	-	13,761.89	Diverse	5.82%
▲ BVN PE**	US\$	8.88	7.12%	15.47%	19.03%	21.64%	100.00%	1,976,483	1.35	0.00	-	2,443.44	Mining	5.88%
▲ CASAGRC1 PE**	S/.	9.70	4.30%	3.19%	-0.51%	6.59%	100.00%	117,170	0.86	55.69	6.68	212.97	Agricultural	1.31%
▲ BBVAC1 PE**	S/.	1.95	2.63%	-2.50%	5.98%	7.73%	100.00%	1,098,226	0.83	2.33	8.50	3,435.16	Finance	2.85%
▲ CORAREI1 PE**	S/.	1.85	2.21%	-0.54%	-1.60%	7.56%	100.00%	47,640	0.81	14.90	2.80	591.24	Industrial	1.72%
▲ CPACASC1 PE**	S/.	5.00	0.40%	3.31%	-0.40%	1.01%	100.00%	791,307	0.68	15.80	35.71	603.23	Industrial	2.38%
▲ CVERDEC1 PE**	US\$	45.00	4.65%	4.65%	2.86%	20.87%	100.00%	5,992,405	1.19	4.44	13.22	15,752.52	Mining	5.25%
▼ ENGEPEC1 PE**	S/.	2.02	-1.94%	-2.42%	-3.81%	-2.42%	90.00%	207,092	0.67	15.39	8.79	1,261.32	Public Services	1.44%
▼ ENDISPC1**	S/.	4.31	-0.92%	-1.37%	5.12%	7.75%	70.00%	40,493	0.79	7.67	8.81	717.38	Public Services	0.98%
▲ FERREYC1 PE**	S/.	2.50	5.49%	0.00%	10.13%	21.95%	100.00%	586,043	0.96	7.87	6.28	635.79	Diverse	4.90%
- AENZAC1 PE**	S/.	1.40	0.00%	1.45%	-7.89%	2.19%		155,990	1.26	0.00	-	318.18	Diverse	4.05%
▲ IFS PE**	US\$	33.70	5.51%	9.63%	21.22%	25.51%	95.00%	220,344	1.05	4.21	7.82	3,890.59	Diverse	7.22%
▲ INRETC1 PE**	US\$	34.00	0.74%	0.00%	-7.86%	-2.72%	100.00%	352,559	0.87	4.01	70.12	3,495.45	Diverse	5.28%
▼ LUSURC1 PE**	S/.	18.00	-0.17%	2.92%	25.87%	26.40%	90.00%	27,972	0.00	5.36	16.42	2,284.67	Public Services	1.81%
▲ MINSURI1 PE**	US\$	5.00	5.04%	5.26%	11.11%	26.58%	60.00%	1,820	1.26	0.00	-	34.37	Mining	2.12%
- PML PE**	S/.	0.13	0.00%	-13.33%	0.00%	1.25%	95.00%	8,331	0.86	27.32	3.86	295.58	Mining	2.14%
▲ SCCO PE**	US\$	65.13	2.63%	1.06%	1.77%	5.42%	100.00%	49,738	1.24	0.00	-	91.99	Industrial	1.43%
- SIDERC1 PE**	S/.	1.62	0.00%	1.25%	-5.26%	1.25%	100.00%	42,176	1.04	3.55	-	1,241.62	Mining	2.93%
▼ TV PE**	S/.	0.93	-1.06%	-8.82%	-34.97%	-28.46%	100.00%	456,558	1.50	0.00	-	765.05	Industrial	3.00%
▲ UNACEMC1 PE**	S/.	2.62	5.65%	5.65%	8.71%	46.54%	60.00%	18,649	0.00	1.13	-	296.80	Mining	3.00%
▲ VOLCABC1 PE**	S/.	0.72	7.46%	4.35%	0.00%	20.00%	55.00%	2,200	1.15	0.00	10.06	1,192.22	Mining	5.90%
▲ BROCALC1 PE**	S/.	7.62	2.97%	-1.68%	12.89%	46.54%	100.00%	384,730	0.97	13.75	4.04	3,757.33	Mining	0.00%
▼ RIMSEGC1 PE**	US\$	0.88	-1.12%	-1.12%	0.00%	2.33%	60.00%	1,820	1.26	0.00	-	34.37	Mining	0.00%
▲ CORAREC1 PE**	US\$	2.05	1.49%	1.99%	2.50%	7.89%	95.00%	62,929	1.03	4.91	14.34	50,352.00	Industrial	0.00%
- ENGIEC1 PE**	S/.	6.45	0.00%	3.70%	9.14%	10.07%	95.00%	8,331	0.86	27.32	3.86	295.58	Mining	0.00%
- GBVLAC1 PE**	US\$	2.54	0.00%	-0.39%	-6.62%	-6.62%	100.00%	49,738	1.24	0.00	-	91.99	Industrial	0.00%

Quantity of shares: 29  
Source: Bloomberg, Economática  
\* Bloomberg Industry Classification System  
\*\* PER is used in the stock market and original currency of the instrument  
\*Legend: Variation 1D: 1 Day; 5D: 5 Days, 1M: 1 Month; YTD: Var.% 12/31/21 to date

Up 17  
Down 3  
Hold 9

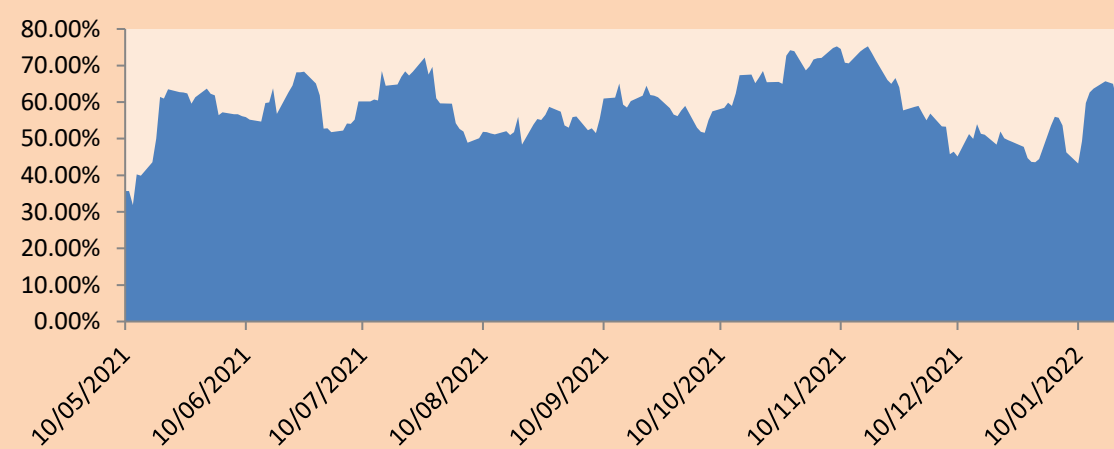
### Sectorial Indices

	Close	1D*	5D*	30D*	YTD*	Beta
▲ S&P/BVLMining	441.29	3.74%	2.94%	2.45%	7.21%	0.87
▲ S&P/BVLConsumer	1,207.25	1.45%	-0.35%	-0.73%	5.16%	0.74
▲ S&P/BVLIndustrials	285.95	3.61%	2.54%	4.66%	10.80%	0.77
▲ S&P/BVLFinancials	1,028.87	7.06%	3.51%	6.82%	13.55%	1.26
▲ S&P/BVLConstruction	302.76	2.86%	3.61%	2.58%	6.84%	0.68
▼ S&P/BVLPublicSvcs	580.41	-0.72%	1.00%	4.44%	5.82%	0.25
▼ S&P/BVLElectricUtil	566.62	-0.72%	1.00%	4.44%	5.82%	0.25

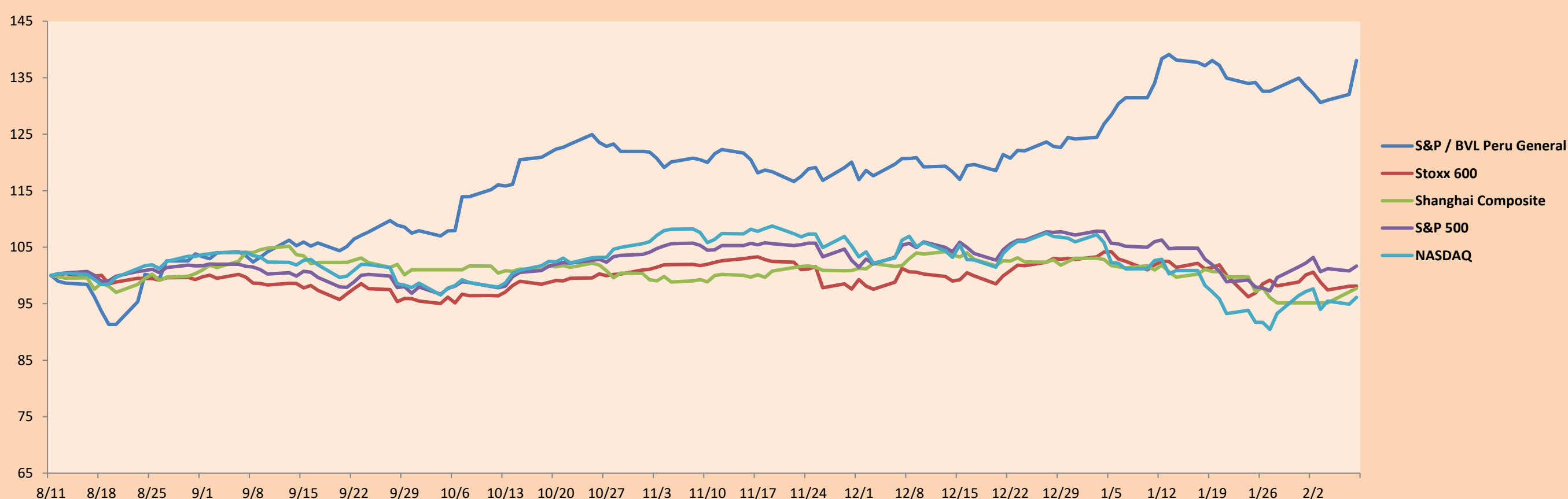
S&P/BVLConstructionTRPEN

\*Legend: Variation 1D: 1 Day; 5D: 5 Days, 1M: 1 Month; YTD: Var.% 12/31/21 to date

Correlation Graph of Returns of Mining Index against Metallic Index of London (3 months)



Indices (6 months)



Base: 11/08/21=100  
Source: Bloomberg

Capital Market Laboratory Coordinator: Economist Bruno Bellido  
Collaboration: Sebastian Ore, Ariam Loayza, Miguel Solimano y Jhonatan Cueva  
email: pulsobursatil@ulima.edu.pe  
facebook: www.facebook.com/pulsobursatil.ul

## SOVEREIGN RATING

### RISK RATINGS

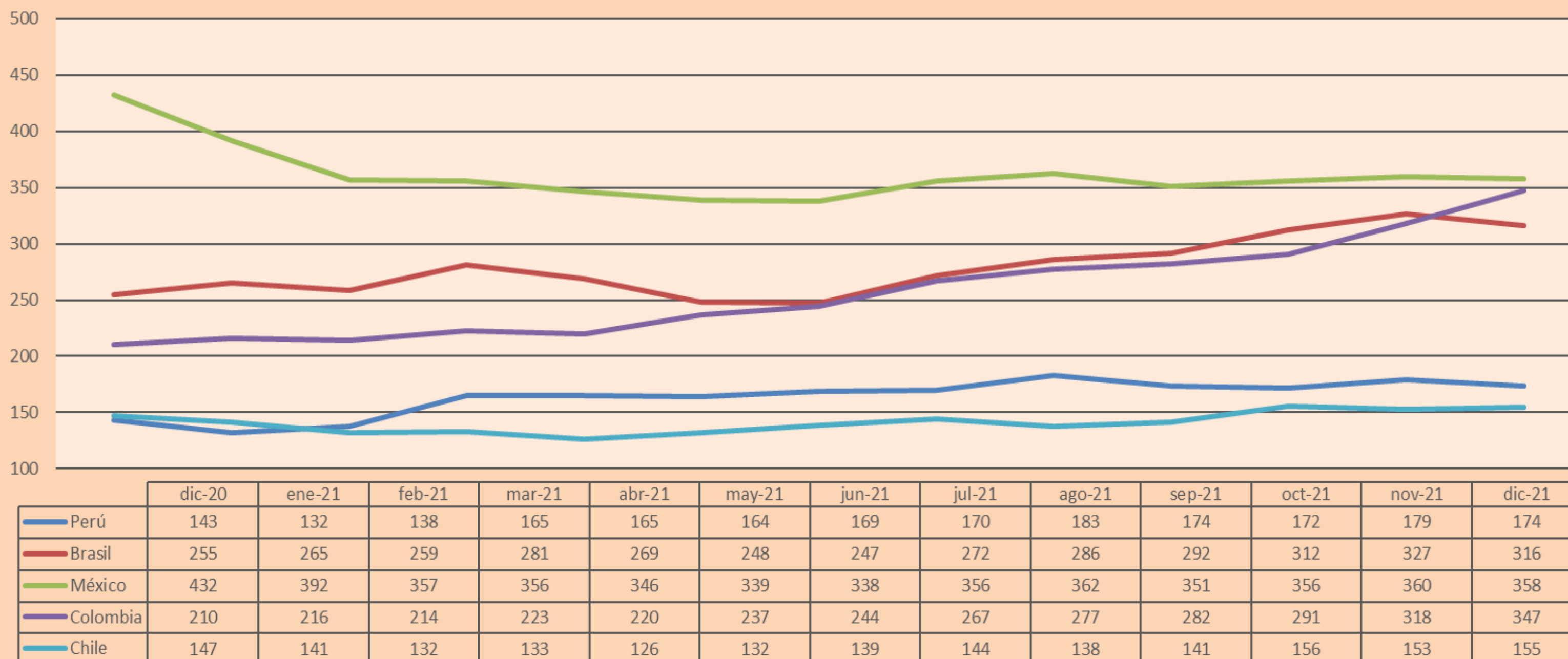
Moody's	S&P	Fitch	
Aaa	AAA	AAA	Prime
Aa1	AA+	AA+	High credit quality
Aa2	AA	AA	
Aa3	AA-	AA-	
A1	A+	A+	Medium-high grade, with low credit risk
A2	A	A	
A3	A-	A-	
Baa1	BBB+	BBB+	Moderate Credit Risk
Baa2	BBB	BBB	
Baa3	BBB-	BBB-	
Ba1	BB+	BB+	It has speculative elements and it is subject to substantial credit risk
Ba2	BB	BB	
Ba3	BB-	BB-	
B1	B+	B+	It is considered speculative and it has high credit risk
B2	B	B	
B3	B-	B-	
Caa1	CCC+	CCC	
Caa2	CCC	CCC	
Caa3	CCC-	CCC	
Ca	CC	CCC	Very close to default or in default
	C	DD	
C	D	DD	

Latin America Credit Rating			
Clasificadora de riesgo			
Country	Moody's	Fitch	S&P
Peru	Baa1	BBB	BBB+
México	Ba2	BB-	BB-
Venezuela	C	WD	NR
Brazil	Ba2	BB-	BB-
Colombia	Baa2	BB+	BB+
Chile	A1	A-	A
Argentine	Ca	WD	CCC+
Panama	Baa2	BBB-	BBB

29

Source: Bloomberg

### LATAM Country Risk (bps)



Source: BCRP

Capital Market Laboratory Coordinator: Economist Bruno Bellido  
Collaboration: Sebastian Ore, Ariam Loayza, Miguel Solimano y Jhonatan Cueva  
email: pulsobursatil@ulima.edu.pe  
facebook: www.facebook.com/pulsobursatil.ul