

PULSO BURSÁTIL

FACULTAD DE CIENCIAS EMPRESARIALES Y ECONÓMICAS
CARRERA DE ECONOMÍA
LABORATORIO DE MERCADO DE CAPITALES

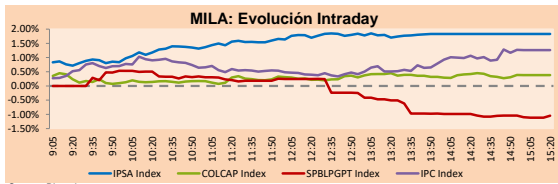


MILA

Lima, March 24, 2022

Main Indexes	Close	1 D	5 D	1 M	YTD	Cap. Burs. (US\$ bill)
▲ IPSA (Chile)	4,954.51	2.34%	3.44%	12.61%	15.00%	114.65
▲ IGPA (Chile)	25,217.37	2.32%	4.15%	13.79%	16.93%	131.31
▲ COLSC (Colombia)	1,050.93	0.30%	-1.19%	0.66%	7.99%	7.30
▲ COLCAP (Colombia)	1,593.50	0.38%	4.28%	5.56%	12.94%	94.53
▼ S&P/BVL (Perú)*	25,363.65	-1.09%	1.73%	9.78%	20.14%	125.48
▼ S&P/BVL SEL (Perú)	659.78	-0.87%	1.66%	8.18%	17.07%	114.51
▼ S&P/BVL LIMA 25	35,741.33	-0.66%	0.36%	6.80%	18.06%	124.65
▲ IPC (México)	55,829.86	1.22%	4.53%	8.50%	4.80%	345.59
▲ S&P MILA 40	564.66	1.05%	4.42%	14.57%	26.93%	258.78

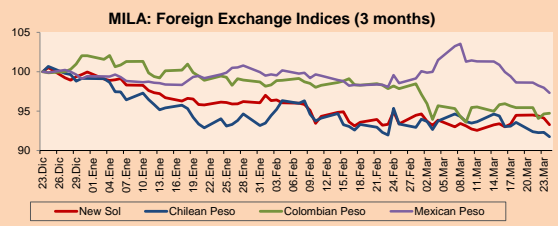
*Legend: Variation 1D: 1 day; 5D: 5 days; 1M: 1 Month; YTD: Var% 12/31/21 to date



Source: Bloomberg

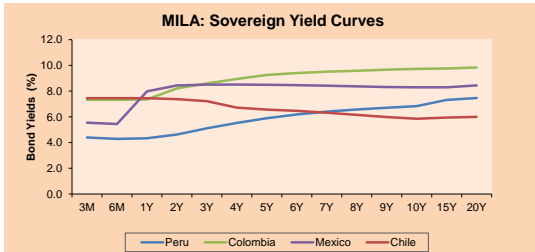
Currency	Price	1D*	5D*	30 D*	YTD*
▼ Sol (PEN)	3,7337	-0.89%	-0.47%	0.09%	-6.64%
▼ Chilean Peso (CLP)	788.36	-0.59%	-1.44%	-0.59%	-7.47%
▲ Colombian Peso (COP)	3,788.23	0.09%	-0.97%	-3.62%	-7.16%
▼ Mexican Peso (MXN)	20.09	-0.66%	-2.11%	-1.05%	-2.14%

*Legend: Variation 1D: 1 day; 5D: 5 days; 1M: 1 Month; YTD: Var% 12/31/21 to date



Base: 23/12/21=100
Source: Bloomberg

Fixed Income	Currency	Price	Bid Yield (%)	Ask Yield (%)	Duration
PERU 7.35 07/21/25	USD	113.269	3.17	3.03	2.96
PERU 4.125 08/25/27	USD	103.543	3.45	3.36	4.84
PERU 8.75 11/21/33	USD	143.645	4.06	3.98	7.94
PERU 6.55 03/14/37	USD	124.236	4.36	4.30	9.69
PERU 5.625 11/18/2050	USD	122.846	4.26	4.22	15.32
CHILE 2.25 10/30/22	USD	100.397	1.93	1.21	0.59
CHILE 3.125 01/21/26	USD	101.35	2.79	2.71	3.58
CHILE 3.625 10/30/42	USD	91.569	4.28	4.21	13.97
COLOM 11.85 03/09/28	USD	145.93	3.37	3.20	4.63
COLOM 10.375 01/28/33	USD	135.221	6.01	5.84	7.06
COLOM 7.375 09/18/37	USD	111.407	6.26	6.18	9.52
COLOM 6.125 01/18/41	USD	95.981	6.53	6.47	10.82
MEX 4 10/02/23	USD	#N/A	#N/A	#N/A	#N/A
MEX5.55 01/45	USD	107.511	5.01	4.97	13.14



Source: Bloomberg

Equity

Largest gains	Exchange	Currency	Price	▲%
ITAU CORPBANCA	Chile	CLP	1.82	6.43
CMPC	Chile	CLP	1508.00	5.08
EMPRESAS COPEC	Chile	CLP	6750.00	3.85
ENEL CHILE	Chile	CLP	26.00	3.84
SOQUIMICH-B	Chile	CLP	65900.00	3.70

Per Turnover	Exchange	Amount (US\$)
GRUPO F BANORT-O	Mexico	55,770,310
GRUPO MEXICO-B	Mexico	54,343,971
AMERICA MOVIL-L	Mexico	48,805,068
WALMART DE MEXIC	Mexico	48,213,896
CREDICORP LTD	Peru	38,793,430

Largest losses	Exchange	Currency	Price	▼%
GRUPO ENERGIA BO	Colombia	COP	2480	-1.27
VOLCAN CIA MIN-B	Peru	PEN	0.89	-1.11
GRUPO AVVAL SA-PAF	Colombia	COP	1018	-0.78
ALICORP-C	Peru	PEN	5.79	-0.69
AERO DEL PACIF-B	Mexico	MXN	276.89	-0.60

Per Volume	Exchange	Volume
ITAU CORPBANCA	Chile	3,780,541,250
ENEL CHILE SA	Chile	214,372,246
BANCO DE CHILE	Chile	145,434,029
BANCO SANTANDER	Chile	93,005,081
América Movil-L	Mexico	46,938,774

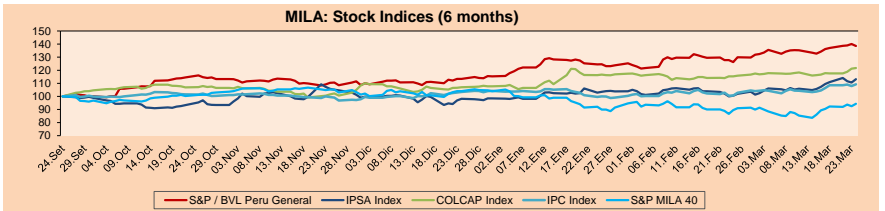
MILA

Peru: The BVL General index ended today's session with a negative -1.09%. The index maintains a positive annual cumulative trend of +20.14% in local currency, while the dollar-adjusted performance amounted to +28.70%. Then, the S&P/BVL Peru SEL varied -0.86% while the S&P/BVL LIMA 25 varied -0.66%. The spot PEN reached 5/3.7334. Headline: Peru among the group of countries in the world that are at risk of stagflation.

Chile: The IPSA index ended the day with a positive return of +2.34%. The most benefited sectors of the day were Energy (+3.85%) and Materials (+3.58%). The best performing stocks were Corpbanca (+6.43%) and Empresas CMPC SA (+5.08%). Headline: The dollar closes at its lowest price in six months after a rise in the value of copper.

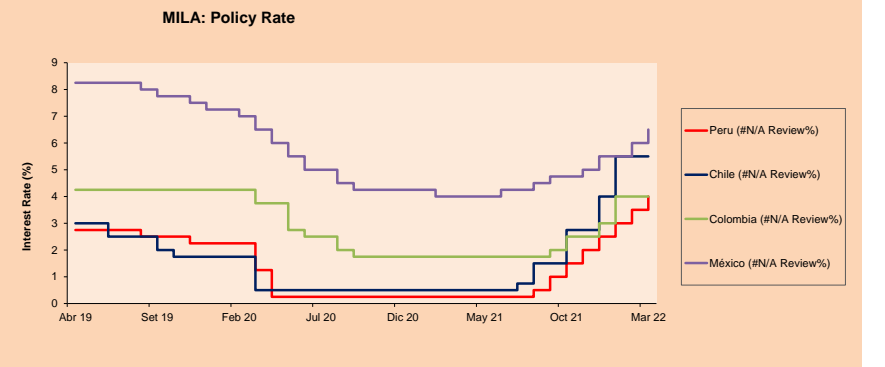
Colombia: The COLCAP index ended the session with a positive return of +0.38%. The sectors that benefited the most during the day were Materials (+2.01%) and Finance (+0.38%). The best performing stocks were Promigas (+9.45%) and Inversiones Argos SA (+3.20%). Headline: New capital market bill to be filed this Thursday.

Mexico: The IPC index closed the day in positive territory, +1.22%. The best performing sectors of the day were Finance (+2.30%) and Materials (+1.90%). The best performing stocks were Regional SAB de CV (+3.95%) and Grupo Aeroportuario del Pacífico (+3.51%). Headline: Zero and three more: Banxico raises rate to 6.5%.



Base: 27/09/21=100
Source: Bloomberg

ETFs	Curr.	Close	1D	5D	30 D	YTD	Exchange
▼ iShares MSCI All Peru Caped Index Fund	USD	37.23	-0.48%	0.89%	9.63%	25.69%	NYSE Arca
▲ iShares MSCI All Chile Caped Index Fund	USD	29.25	3.50%	4.76%	14.26%	26.68%	CBOE BZX
▲ Global X MSCI Colombia	USD	12.2618	1.11%	5.37%	14.54%	22.70%	NYSE Arca
▲ iShares MSCI Mexico Capped	USD	53.61	1.61%	4.18%	6.24%	5.95%	NYSE Arca
▲ iShares MSCI Emerging Markets	USD	45.41	0.53%	1.54%	-5.45%	-7.04%	NYSE Arca
▲ Vanguard FTSE Emerging Markets	USD	46.45	0.61%	1.46%	-5.05%	-6.09%	NYSE Arca
▲ iShares Core MSCI Emergina Markets	USD	55.89	0.67%	1.58%	-4.69%	-6.63%	NYSE Arca
▲ iShares JP Morgan Emerging Markets Bonds	USD	61.1	0.41%	-0.23%	-3.09%	-2.74%	CBOE BZX
- Morgan Stanley Emerging Markets Domestic	USD	4.86	0.00%	0.21%	-10.83%	-11.31%	New York



Source: Bloomberg

Capital Market Laboratory Coordinator: MS Javier Penny Pestana
Collaboration: Sebastian Ore, Fabrizio Lavalle, Miguel Solimano y Jhonatan Cueva
email: pulsobursatil@ulima.edu.pe
facebook: www.facebook.com/pulsobursatil

The content of this document is just for informational purposes. The information and opinions expressed should not be considered as recommendations for future decisions. Under any circumstances, the Capital Market Laboratory of University of Lima will be responsible for the use of the statements in this document.

LIMA

Stocks

Ticker	Currency	Price	1D*	5D*	30D*	YTD*	Frequency	Volume (US\$)	Beta	Dividend Yield (%)	Price Earning	Market Cap. (M US\$)	Economic Sector*	Index Weight
▲ ALICORC1 PE**	S/.	5.78	0.30%	-1.19%	0.66%	7.99%	100.00%	11,649	0.78	14.45	13.82	1,319.92	Industrial	3.53%
- ATACOCB1 PE**	S/.	0.13	0.00%	0.00%	0.00%	8.33%	50.00%	3,752	1.01	0.00	-	32.90	Mineras	1.02%
- BACKJUI1 PE**	S/.	23.40	0.00%	-2.50%	-2.50%	14.15%	85.00%	13,579	0.77	13.31	8.17	7,986.21	Industriales	0.82%
▼ BAP PE**	US\$	174.00	-1.94%	3.18%	14.62%	40.57%	100.00%	38,793,430	1.31	0.70	-	16,422.52	Diversas	5.82%
▲ BVN PE**	US\$	10.65	3.10%	3.40%	11.52%	45.89%	100.00%	993,947	1.32	0.00	-	2,930.47	Mineras	5.88%
▼ CASAGRC1 PE**	S/.	9.70	-1.02%	-2.02%	5.21%	6.59%	90.00%	13,070	0.76	55.69	5.85	218.84	Agrario	1.31%
- BBVAC1 PE**	S/.	2.20	0.00%	-1.35%	5.26%	21.55%	95.00%	29,636	0.81	2.06	9.59	3,982.28	Bancos y Financieras	2.85%
- CORAREH1 PE**	S/.	1.84	0.00%	-0.54%	-0.54%	6.98%	100.00%	32,496	0.77	14.98	2.79	670.10	Industriales	1.72%
- CPACASC1 PE**	S/.	4.85	0.00%	2.11%	-3.00%	-2.02%	100.00%	43,708	0.62	16.29	13.47	602.92	Industriales	2.38%
▼ CVERDEC1 PE**	US\$	45.50	-2.78%	-3.40%	8.72%	22.21%	100.00%	165,696	1.02	4.39	13.37	15,927.55	Mineras	5.25%
- ENGEPEC1 PE**	S/.	2.35	0.00%	4.91%	9.30%	13.53%	95.00%	50,352	0.73	13.23	9.40	1,507.78	Servicios Públicos	1.44%
- ENDISPC1**	S/.	4.50	0.00%	1.12%	4.65%	12.50%	60.00%	247	0.85	0.00	8.72	769.62	Servicios Públicos	0.98%
▲ FERREYC1 PE**	S/.	2.47	0.82%	2.49%	2.07%	20.49%	100.00%	355,398	0.90	7.97	5.56	645.46	Diversas	4.90%
- AENZAC1 PE**	S/.	1.25	0.00%	0.00%	-8.09%	-8.76%	85.00%	18,433	0.96	0.00	-	291.91	Diversas	4.05%
▼ IFS PE**	US\$	34.08	-0.79%	2.37%	7.78%	26.93%	100.00%	13,924	1.15	4.17	8.21	3,933.45	Diversas	7.22%
▲ INRETC1 PE**	US\$	36.90	0.27%	-0.27%	6.96%	5.58%	100.00%	3,371,813	1.00	3.69	40.91	3,793.59	Diversas	5.28%
- LUSURC1 PE**	S/.	17.00	0.00%	0.00%	-5.03%	19.38%	60.00%	6,010	0.00	5.68	14.31	2,217.15	Servicios Públicos	1.81%
- MINSUR1 PE**	S/.	6.25	0.00%	2.46%	11.61%	58.23%	100.00%	163,469	1.01	11.00	2.92	4,825.98	Mineras	3.09%
- PML PE**	US\$	0.15	0.00%	7.14%	7.14%	25.00%	55.00%	4,997	1.07	0.00	-	39.66	Mineras	2.12%
▼ SCCO PE**	US\$	76.86	-1.47%	5.68%	14.89%	24.41%	100.00%	270,815	1.17	4.68	16.92	59,419.46	Mineras	2.14%
▼ SIDERC1 PE**	S/.	1.55	-0.64%	-2.52%	-3.13%	-3.13%	90.00%	6,223	0.82	28.55	3.36	290.60	Industriales	1.43%
▼ TV PE**	US\$	1.15	-2.54%	5.50%	17.35%	-11.54%	100.00%	14,018	1.16	0.00	-	113.75	Mineras	2.93%
- UNACEMC1 PE**	S/.	2.15	0.00%	-2.27%	-12.24%	-10.42%	100.00%	5,764	0.58	4.65	9.00	1,046.94	Industriales	3.00%
- VOLCABC1 PE**	S/.	0.87	0.00%	-2.25%	16.00%	45.00%	100.00%	524,826	0.87	0.00	24.47	1,877.35	Mineras	5.90%
- BROCALC1 PE**	S/.	8.00	0.00%	0.00%	-0.62%	53.85%	45.00%	7,499	0.00	1.07	60.11	318.96	Mineras	0.00%
- RIMSEGC1 PE**	S/.	0.80	0.00%	-6.98%	10.98%	-6.98%	10.00%	217	0.00	0.00	15.04	353.92	Seguros	0.00%
- CORAREC1 PE**	S/.	2.30	0.00%	10.58%	11.65%	21.05%	25.00%	12,320	0.00	0.00	3.48	670.10	Industriales	0.00%
- ENGIEC1 PE**	S/.	6.50	0.00%	0.00%	0.00%	10.92%	35.00%	2,700	0.00	5.97	15.97	1,046.93	Industriales	0.00%
- GBVLAC1 PE**	S/.	2.55	0.00%	0.00%	2.00%	-6.25%	40.00%	4,439	0.00	0.00	26.50	124.00	Diversas	0.00%

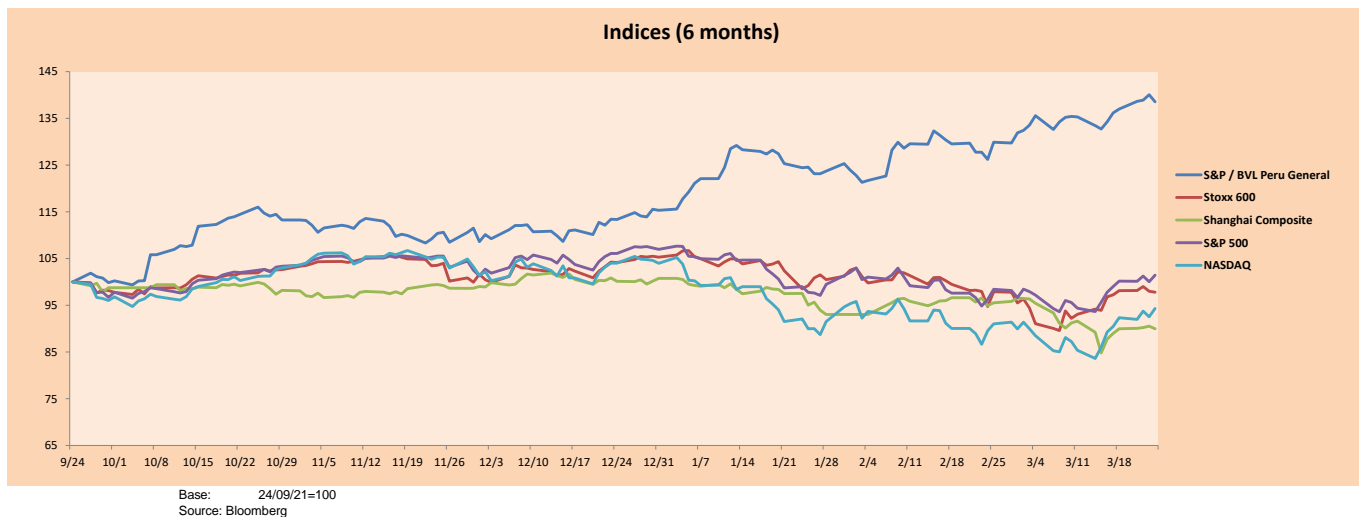
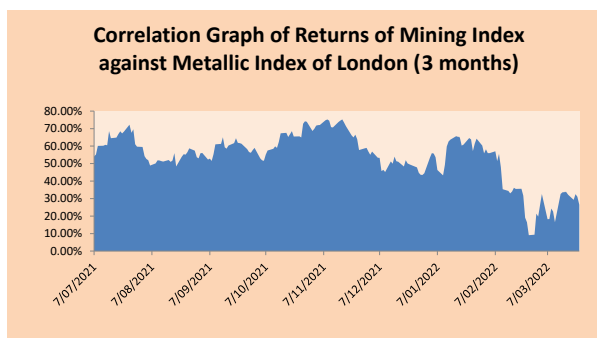
Quantity of shares: 29
 Source: Bloomberg, Económica
 * Bloomberg Industry Classification System
 ** PER is used in the stock market and original currency of the instrument
 *Legend: Variation 1D: 1 Day; 5D: 5 Days, 1M: 1 Month; YTD: Var.% 12/31/21 to date

Sectorial Indices

	Close	1D*	5D*	30D*	YTD*	Beta
▼ S&P/BVLMining	506.93	-1.33%	3.43%	13.25%	23.16%	1.11
▲ S&P/BVLConsumer	1,173.69	-0.34%	-0.80%	0.23%	2.24%	0.58
▲ S&P/BVLIndustrials	269.03	0.23%	1.62%	-3.05%	4.25%	0.51
▼ S&P/BVLFinancials	1,171.73	-2.63%	2.71%	13.56%	29.32%	1.38
▼ S&P/BVLConstruction	279.02	-0.01%	1.26%	-5.12%	-1.54%	0.39
- S&P/BVLPublic Svcs	614.28	0.00%	1.68%	3.54%	11.99%	0.13
- S&P/BVLElectricUtil	599.69	0.00%	1.68%	3.54%	11.99%	0.13

S&P/BVLConstructionTRPEN

*Legend: Variation 1D: 1 Day; 5D: 5 Days, 1M: 1 Month; YTD: Var.% 12/31/21 to date



Base: 24/09/21=100
 Source: Bloomberg

Capital Market Laboratory Coordinator: MS Javier Penny Pestana
 Collaboration: Sebastian Ore, Fabrizio Lavalle, Miguel Solimano y Jhonatan Cueva
 email: pulsobursatil@ulima.edu.pe
 facebook: www.facebook.com/pulsobursatil.ul

The content of this document is just for informational purposes. The information and opinions expressed should not be considered as recommendations for future decisions. Under any circumstances, the Capital Market Laboratory of University of Lima will be responsible for the use of the statements in this document.

SOVEREIGN RATING

RISK RATINGS

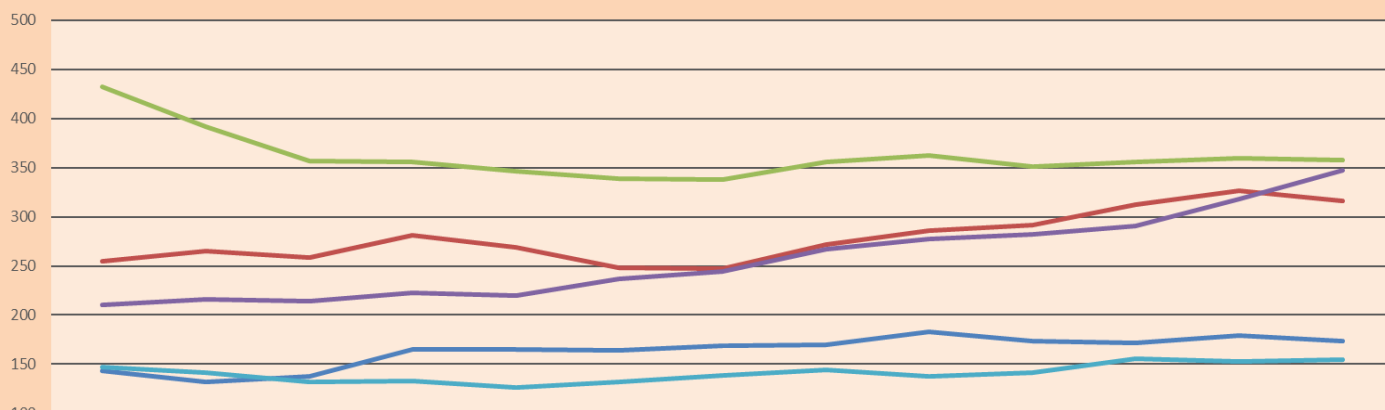
Moody's	S&P	Fitch		
Aaa	AAA	AAA	Prime	
Aa1	AA+	AA+	High credit quality	
Aa2	AA	AA		
Aa3	AA-	AA-		
A1	A+	A+	Medium-high grade, with low credit risk	
A2	A	A		
A3	A-	A-		
Baa1	BBB+	BBB+	Moderate Credit Risk	
Baa2	BBB	BBB		
Baa3	BBB-	BBB-		
Ba1	BB+	BB+	It has speculative elements and it is subject to substantial credit risk	
Ba2	BB	BB		
Ba3	BB-	BB-		
B1	B+	B+	It is considered speculative and it has high credit risk	
B2	B	B		
B3	B-	B-		
Caa1	CCC+	CCC	Bad credit conditions and it is subject to high credit risk	
Caa2	CCC			
Caa3	CCC-			
Ca	C	DDD	Very close to default or in default	
C	D			DD
				D

Source: Bloomberg

Latin America Credit Rating			
Clasificadora de riesgo			
Country	Moody's	Fitch	S&P
Peru	Baa1	BBB	BBB
México	Baa1	BBB-	BBB
Venezuela	C	WD	NR
Brazil	Ba2	BB-	BB-
Colombia	Baa2	BB+	BB+
Chile	A1	A-	A
Argentina	Ca	WD	CCC+
Panama	Baa2	BBB-	BBB

Source: Bloomberg

LATAM Country Risk (bps)



	dic-20	ene-21	feb-21	mar-21	abr-21	may-21	jun-21	jul-21	ago-21	sep-21	oct-21	nov-21	dic-21
Perú	143	132	138	165	165	164	169	170	183	174	172	179	174
Brasil	255	265	259	281	269	248	247	272	286	292	312	327	316
México	432	392	357	356	346	339	338	356	362	351	356	360	358
Colombia	210	216	214	223	220	237	244	267	277	282	291	318	347
Chile	147	141	132	133	126	132	139	144	138	141	156	153	155

Source: BCRP

Capital Market Laboratory Coordinator: MS Javier Penny Pestana
Collaboration: Sebastian Ore, Fabrizio Lavalle, Miguel Solimano y Jhonatan Cueva
email: pulsobursatil@ulima.edu.pe
facebook: www.facebook.com/pulsobursatil.ul