

# PULSO BURSÁTIL

FACULTAD DE CIENCIAS EMPRESARIALES Y ECONÓMICAS  
CARRERA DE ECONOMÍA  
LABORATORIO DE MERCADO DE CAPITALES

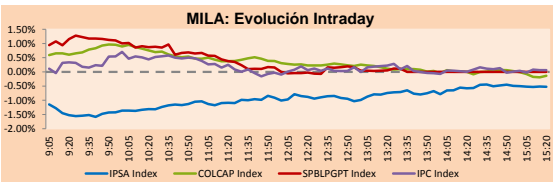


## MILA

Lima, April 6, 2022

Main Indexes	Close	1 D	5 D	1 M	YTD	Cap. Burs. (US\$ bill)
▲ IPSA (Chile)	4,971.94	0.87%	1.57%	7.66%	15.40%	114.50
▲ IGPA (Chile)	25,349.93	0.74%	1.33%	8.35%	17.54%	130.80
▼ COLSC (Colombia)	1,028.51	-0.68%	-0.22%	-2.85%	5.69%	7.18
▼ COLCAP (Colombia)	1,626.10	-0.48%	1.55%	5.71%	15.25%	95.66
▼ S&P/BVL (Perú)*	24,606.86	-1.41%	-2.34%	1.33%	16.56%	118.25
▼ S&P/BVL SEL (Perú)	643.49	-1.33%	-1.68%	0.51%	14.18%	107.40
▼ S&P/BVL LIMA 25	36,074.40	-0.67%	0.47%	2.82%	19.16%	117.39
▼ IPC (México)	55,438.73	-0.20%	-0.67%	5.98%	4.07%	346.75
▼ S&P MILA 40	563.96	-0.99%	-0.42%	7.35%	26.78%	6,994.05

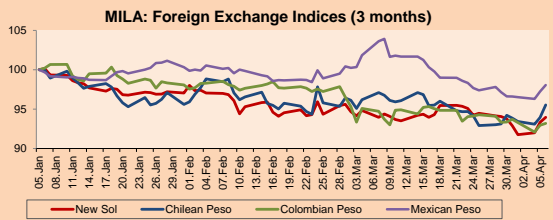
\*Legend: Variation 1D: 1 day; 5D: 5 days; 1M: 1 Month; YTD: Var% 12/31/21 to date



Source: Bloomberg

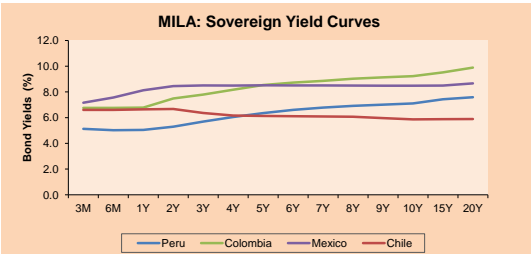
Currency	Price	1D*	5D*	30 D*	YTD*
▲ Sol (PEN)	3,7218	0.65%	0.19%	-0.02%	-6.93%
▲ Chilean Peso (CLP)	800.03	1.69%	1.39%	-1.61%	-6.10%
▲ Colombian Peso (COP)	3,750.45	0.25%	-0.19%	-1.62%	-8.08%
▲ Mexican Peso (MXN)	20.17	0.84%	1.49%	-5.37%	-1.75%

\*Legend: Variation 1D: 1 day; 5D: 5 days; 1M: 1 Month; YTD: Var% 12/31/21 to date



Base: 05/01/22=100  
Source: Bloomberg

Fixed Income	Currency	Price	Bid Yield (%)	Ask Yield (%)	Duration
PERU 7.35 07/21/25	USD	112.459	3.38	3.25	2.93
PERU 4.125 08/25/27	USD	102.701	3.62	3.52	4.80
PERU 8.75 11/21/33	USD	142.572	4.14	4.07	7.91
PERU 6.55 03/14/37	USD	124.543	4.33	4.28	9.67
PERU 5.625 11/18/2050	USD	123.824	4.21	4.17	15.37
CHILE 2.25 10/30/22	USD	100.272	2.08	1.44	0.55
CHILE 3.125 01/21/26	USD	99.91	3.22	3.08	3.54
CHILE 3.625 10/30/42	USD	91.561	4.28	4.21	13.96
COLOM 11.85 03/09/28	USD	145.793	3.37	3.18	4.60
COLOM 10.375 01/28/33	USD	135.231	6.04	5.79	7.04
COLOM 7.375 09/18/37	USD	112.323	6.17	6.09	9.53
COLOM 6.125 01/18/41	USD	96.741	6.46	6.39	10.85
MEX 4 10/02/23	USD	96.741	6.456	6.394	10.85
MEX5.55 01/45	USD	107.066	5.05	5.00	13.11



Source: Bloomberg

## Equity

Largest gains	Exchange	Currency	Price	▲%
BOLSA MEXICANA	Mexico	MXN	42.68	3.8
BANCO DE CHILE	Chile	CLP	86.69	3.2
WALMART DE MEXIC	Mexico	MXN	80.82	2.7
BUENAVENTURA-ADR	Peru	USD	9.95	2.4
BANCO SANTANDER	Chile	CLP	44.80	2.4

Per Turnover	Exchange	Amount (US\$)
GRUPO F BANORT-O	Mexico	88361097.06
WALMART DE MEXIC	Mexico	55848876.06
AMERICA MOVIL-L	Mexico	53562185.80
FOMENTO ECON-UBD	Mexico	51479013.59
SOQUIMICH-B	Chile	37068134.94

Largest losses	Exchange	Currency	Price	▼%
GRUPO BIMBO-A	Mexico	MXN	59.66	-4.5
CREDECORP LTD	Peru	USD	161.00	-4.1
GRUPO AEROPORTU	Mexico	MXN	150.16	-3.7
CEMEX SAB-CPO	Mexico	MXN	9.86	-3.3
INDUSTRIAS PENOL	Mexico	MXN	233.95	-3.3

Per Volume	Exchange	Volume
ITAU CORPBANCA	Chile	3884082572
BANCO SANTANDER	Chile	126715237
BANCO DE CHILE	Chile	85929203
CEMEX SAB-CPO	Mexico	54492521
AMERICA MOVIL-L	Mexico	49936338

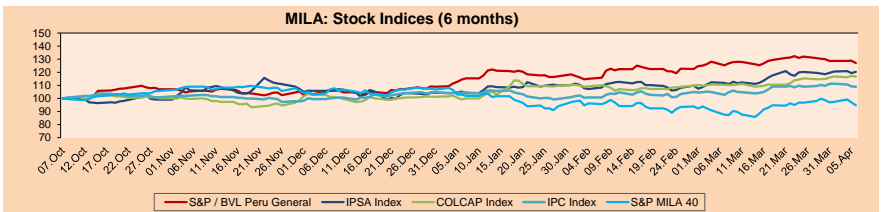
## MILA

Peru: The BVL General index ended today's session with a negative result of +1.41%. The index maintains a positive annual cumulative trend of +16.56% in local currency, while the dollar-adjusted performance amounted to +25.24%. Then, the S&P/BVL Peru SEL varied by -1.33% while the S&P/BVL LIMA 25 by -0.67%. The spot PEN reached S/3.7218. Headline: Dollar continues to rise: closes at 3.72 amid protests against Castillo.

Chile: The IPSA index ended the day with a positive return of +0.86%. The most benefited sectors of the day were Financials (+2.36%) and Energy (+2.20%). The best performing stocks were Banco de Chile SA (+3.20%) and Banco Santander de Chile (+2.35%). Headline: Dollar closes with a rise of more than \$13 over the \$800 mark due to the drop of copper and after the FED minutes.

Colombia: The COLCAP index ended the session with a negative return of -0.48%. The most negatively affected sectors of the day were Non-Basic Consumer Products (-2.32%) and Energy (-1.67%). The worst performing stocks were Organización Terpel SA (-2.32%) and Mineros SA (-2.10%). Headline: This is how inflation behaved in March by city.

Mexico: The IPC index closed the day in negative territory of -0.20%. The worst performing sectors of the day were Materials (-3.01%) and Industries (-1.46%). The worst performing stocks were Grupo Bimbo SAB (-4.59%) and Grupo Aeroportuario del Cent (-3.74%). Headline: BBVA 'pulls out the scissors': lowers Mexico's growth estimate from 2.2% to 1.2%.

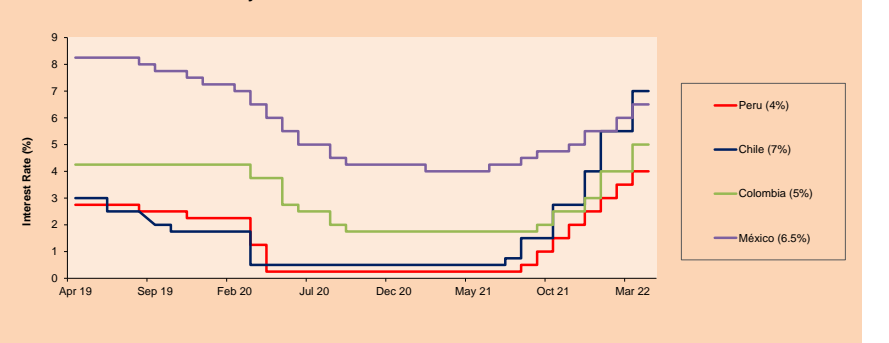


Base: 08/10/21=100  
Source: Bloomberg

## ETFs

ETFs	Curr.	Close	1D	5D	30 D	YTD	Exchange
▲ iShares MSCI All Peru Caped Index Fund	USD	36.83	0.08%	-0.83%	2.39%	24.34%	NYSE Arca
▲ iShares MSCI All Chile Caped Index Fund	USD	28.76	-1.27%	0.03%	10.32%	24.56%	Cboe BZX
▼ Global X MSCI Colombia	USD	12.44	-1.82%	1.08%	8.99%	24.49%	NYSE Arca
▼ iShares MSCI Mexico Capped	USD	53.61	-0.98%	-1.72%	14.09%	5.95%	NYSE Arca
▼ iShares MSCI Emerging Markets	USD	45.25	-1.31%	-1.29%	5.36%	-7.37%	NYSE Arca
▼ Vanguard FTSE Emerging Markets	USD	46.47	-1.11%	-0.90%	5.23%	-6.05%	NYSE Arca
▼ iShares Core MSCI Emerging Markets	USD	55.76	-1.22%	-1.13%	5.69%	-6.85%	NYSE Arca
▲ iShares JP Morgan Emerging Markets Bonds	USD	61.49	0.77%	-0.13%	3.57%	-2.12%	Cboe BZX
▼ Morgan Stanley Emerging Markets Domestic	USD	4.78	-1.04%	-3.04%	0.21%	-12.77%	New York

## MILA: Policy Rate



Source: Bloomberg

Capital Market Laboratory Coordinator: MS Javier Penny Pestana  
Collaboration: Sebastian Ore, Fabrizio Lavalle, Miguel Solimano y Jhonatan Cueva  
email: pulsobursatil@ulima.edu.pe  
facebook: www.facebook.com/pulsobursatil

The content of this document is just for informational purposes. The information and opinions expressed should not be considered as recommendations for future decisions. Under any circumstances, the Capital Market Laboratory of University of Lima will be responsible for the use of the statements in this document.



# LIMA

## Stocks

Ticker	Currency	Price	1D*	5D*	30D*	YTD*	Frequency	Volume (US\$)	Beta	Dividend Yield (%)	Price Earning	Market Cap. (M US\$)	Economic Sector*	Index Weight
▼ ALICORC1 PE**	S/.	5.70	-0.68%	-0.22%	-2.85%	5.69%	100.00%	867,141	0.75	14.65	13.63	1,305.85	Industrial	3.53%
- ATACOB1 PE**	S/.	0.13	0.00%	0.00%	-7.14%	8.33%	50.00%	1,450	1.01	0.00	-	33.00	Mining	1.02%
▼ BACKUS11 PE**	S/.	24.00	-0.83%	0.00%	4.35%	17.07%	80.00%	22,570	0.75	12.98	8.12	8,114.99	Industrial	0.82%
▼ BAP PE**	US\$	161.00	-4.12%	-7.47%	9.03%	30.07%	100.00%	1,214,059	1.27	0.76	-	15,195.55	Diverse	5.82%
▲ BVN PE**	US\$	9.95	2.37%	1.02%	-12.72%	36.30%	100.00%	152,679	1.29	0.00	-	2,737.86	Mining	5.88%
▲ CASAGRC1 PE**	S/.	10.80	-1.64%	1.41%	14.89%	18.68%	85.00%	42,667	0.86	50.01	6.51	244.43	Agricultural	1.31%
▼ BVVAC1 PE**	S/.	2.22	-1.33%	0.45%	5.71%	22.65%	95.00%	25,754	0.75	2.05	9.67	4,031.33	Finance	2.85%
▼ CORAREI1 PE**	S/.	1.93	-3.50%	3.76%	6.04%	12.21%	100.00%	330,422	0.74	14.28	2.92	727.26	Industrial	1.72%
▲ CPACASC1 PE**	S/.	4.95	1.02%	1.23%	1.02%	0.00%	100.00%	9,142	0.61	15.96	13.75	617.32	Industrial	2.38%
▼ CVERDEC1 PE**	US\$	45.50	-1.09%	-2.15%	-3.40%	22.21%	100.00%	303,096	1.06	4.39	13.37	15,927.55	Mining	5.25%
- ENGEPEC1 PE**	S/.	2.35	0.00%	3.98%	8.80%	13.53%	100.00%	25,683	0.73	13.23	9.40	1,512.60	Public Services	1.44%
▼ ENDISPC1**	S/.	4.48	-0.44%	-0.88%	1.82%	12.00%	70.00%	8,296	0.84	7.37	8.68	768.65	Public Services	0.98%
- FERREYC1 PE**	S/.	2.58	0.00%	-0.39%	10.73%	25.85%	100.00%	132,819	0.87	7.63	5.81	676.36	Diverse	4.90%
▲ AENZAC1 PE**	S/.	1.53	8.51%	22.40%	17.69%	11.68%	75.00%	1,946,540	0.96	0.00	-	358.44	Diverse	4.05%
▼ IFS PE**	US\$	34.76	-4.37%	1.70%	9.31%	29.46%	100.00%	163,584	1.12	4.09	8.28	4,011.93	Diverse	7.22%
▼ INRETC1 PE**	US\$	37.30	-0.53%	-0.53%	2.19%	6.72%	95.00%	1,053,173	0.68	3.65	40.89	3,834.71	Diverse	5.28%
- LUSURC1 PE**	S/.	17.00	0.00%	0.00%	-1.11%	19.38%	60.00%	13,982	0.00	5.68	14.31	2,224.24	Public Services	1.81%
▲ MINSUR1 PE**	S/.	6.22	0.32%	0.65%	3.67%	57.47%	100.00%	145,355	1.01	11.05	2.94	4,818.17	Mining	3.09%
- PML PE**	US\$	0.14	0.00%	-6.67%	-12.50%	16.67%	55.00%	3,236	1.08	0.00	-	37.01	Mining	2.12%
▼ SCCO PE**	US\$	72.70	-2.15%	-5.79%	-2.18%	17.68%	100.00%	705,184	1.23	4.95	16.01	56,203.42	Industrial	2.12%
- SIDERC1 PE**	S/.	1.95	0.00%	5.41%	23.42%	21.88%	95.00%	61,150	0.63	22.70	4.23	366.76	Mining	2.14%
▼ TV PE**	US\$	1.15	-4.17%	0.88%	1.77%	-11.54%	100.00%	5,728	1.14	0.00	-	113.79	Industrial	1.43%
▼ UNACEMC1 PE**	S/.	2.15	-1.38%	-0.46%	-8.51%	-10.42%	100.00%	15,486	1.06	4.65	-	1,050.29	Mining	2.93%
▼ VOLCABC1 PE**	S/.	0.90	-1.10%	3.45%	3.45%	50.00%	100.00%	350,067	0.85	0.00	25.59	1,863.55	Industrial	3.00%
- BROCALC1 PE**	S/.	7.80	0.00%	-3.70%	-6.02%	50.00%	15.00%	4,192	0.00	0.00	59.26	312.24	Mining	5.90%
▲ RIMSEGC1 PE**	S/.	0.84	5.00%	5.00%	0.00%	-2.33%	20.00%	3,385	0.00	4.00	15.80	372.81	Finance	3.09%
▲ CORAREC1 PE**	US\$	2.50	4.17%	8.70%	21.36%	31.58%	45.00%	10,000	0.00	11.02	3.79	2,706.73	Mining	2.12%
- ENGIEC1 PE**	S/.	6.75	0.00%	1.50%	3.85%	15.19%	50.00%	90	0.48	0.00	16.77	1,090.67	Diversas	2.12%
- GBVLAC1 PE**	S/.	2.55	0.00%	-1.92%	2.00%	-6.25%	60.00%	26,721	0.00	0.00	26.50	124.40	Diversas	2.14%

Quantity of shares: 29  
 Source: Bloomberg, Económica  
 \* Bloomberg Industry Classification System  
 \*\* PER is used in the stock market and original currency of the instrument  
 \*Legend: Variation 1D: 1 Day; 5D: 5 Days, 1M: 1 Month; YTD: Var.% 12/31/21 to date

Up 6  
 Down 14  
 Hold 9

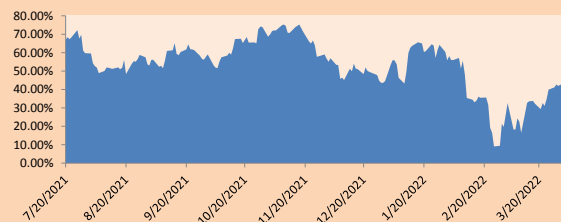
### Sectorial Indices

	Close	1D*	5D*	30D*	YTD*	Beta
▼ S&P/BVLMining	480.73	-1.00%	-3.86%	-4.74%	16.80%	1.11
▲ S&P/BVLConsumer	1,178.83	-0.81%	-0.16%	0.81%	2.69%	0.58
▲ S&P/BVLIndustrials	283.53	1.00%	3.27%	5.45%	9.87%	0.50
▼ S&P/BVLFinancials	1,087.55	-4.02%	-7.01%	8.08%	20.03%	1.39
▲ S&P/BVLConstruction	295.18	1.44%	4.91%	3.32%	4.16%	0.38
▼ S&P/BVLPublicSvcs	623.59	-0.07%	1.45%	4.56%	13.69%	0.14
▼ S&P/BVLElectricUtil	608.78	-0.07%	1.45%	4.56%	13.69%	0.14

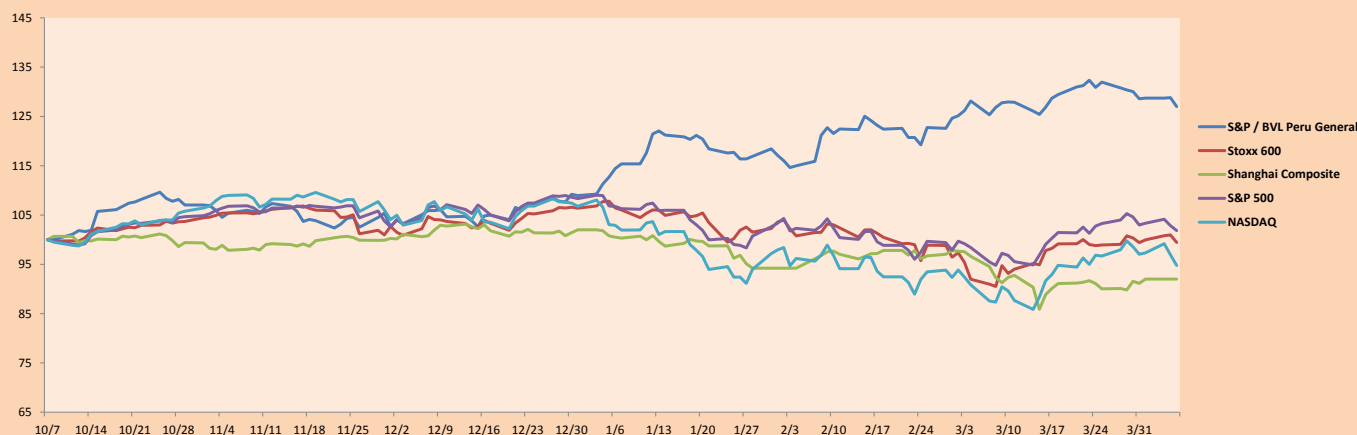
S&P/BVLConstructionTRPEN

\*Legend: Variation 1D: 1 Day; 5D: 5 Days, 1M: 1 Month; YTD: Var.% 12/31/21 to date

Correlation Graph of Returns of Mining Index against Metallic Index of London (3 months)



Indices (6 months)



Base: 07/10/21=100  
 Source: Bloomberg

Capital Market Laboratory Coordinator: MS Javier Penny Pestana  
 Collaboration: Sebastian Ore, Fabrizio Lavalle, Miguel Solimano y Jhonatan Cueva  
 email: pulsobursatil@ulima.edu.pe  
 facebook: www.facebook.com/pulsobursatil.u

## SOVEREIGN RATING

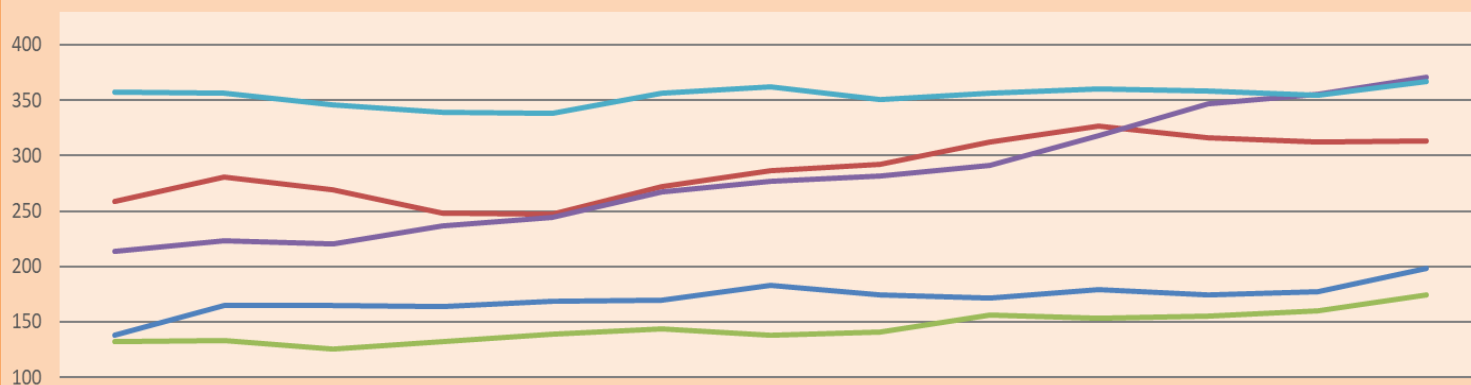
RISK RATINGS			
Moody's	S&P	Fitch	
Aaa	AAA	AAA	Prime
Aa1	AA+	AA+	High credit quality
Aa2	AA	AA	
Aa3	AA-	AA-	
A1	A+	A+	Medium-high grade, with low credit risk
A2	A	A	
A3	A-	A-	
Baa1	BBB+	BBB+	Moderate Credit Risk
Baa2	BBB	BBB	
Baa3	BBB-	BBB-	
Ba1	BB+	BB+	It has speculative elements and it is subject to substantial credit risk
Ba2	BB	BB	
Ba3	BB-	BB-	
B1	B+	B+	It is considered speculative and it has high credit risk
B2	B	B	
B3	B-	B-	
Caa1	CCC+		Bad credit conditions and it is subject to high credit risk
Caa2	CCC		
Caa3	CCC-		
Ca	CC	CCC	Very close to default or in default
	C		
C	D	DDD	

Source: Bloomberg

Latin America Credit Rating			
Clasificadora de riesgo			
Country	Moody's	Fitch	S&P
Peru	Baa1	BBB	BBB
México	Ba2	BB-	BB-
Venezuela	C	WD	NR
Brazil	Ba2	BB-	BB-
Colombia	Baa2	BB+	BB+
Chile	A1	A-	A
Argentine	Ca	WD	CCC+
Panama	Baa2	BBB-	BBB

Source: Bloomberg

## LATAM Country Risk(bps)



	Feb-21	Mar-21	Abr-21	May-21	Jun-21	Jul-21	Ago-21	Set-21	Oct-21	Nov-21	Dic-21	Ene-22	Feb-22
Perú	138	165	165	164	169	170	183	174	172	179	174	177	198
Brasil	259	281	269	248	247	272	286	292	312	327	316	312	313
Chile	132	133	126	132	139	144	138	141	156	153	155	160	174
Colombia	214	223	220	237	244	267	277	282	291	318	347	355	371
México	357	356	346	339	338	356	362	351	356	360	358	354	367

Source: BCRP

Capital Market Laboratory Coordinator: MS Javier Penny Pestana  
Collaboration: Sebastian Ore, Fabrizio Lavallo, Miguel Solimano y Jhonatan Cueva  
email: [pulsobursatil@ulima.edu.pe](mailto:pulsobursatil@ulima.edu.pe)  
facebook: [www.facebook.com/pulsobursatil.ul](https://www.facebook.com/pulsobursatil.ul)