

PULSO BURSÁTIL

FACULTAD DE CIENCIAS EMPRESARIALES Y ECONÓMICAS
CARRERA DE ECONOMÍA
LABORATORIO DE MERCADO DE CAPITALES

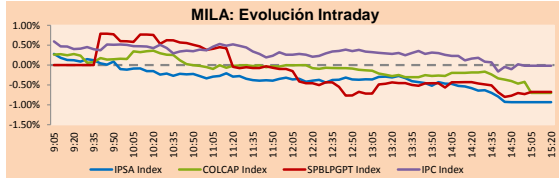


MILA

Lima, April 18, 2022

Main Indexes	Close	1 D	5 D	1 M	YTD	Cap. Burs. (US\$ bill)
▼ IPISA (Chile)	4,867.64	-1.01%	-2.04%	5.29%	12.98%	110.93
▼ IGPA (Chile)	24,976.79	-0.73%	-1.92%	6.46%	15.81%	127.17
▲ COLSC (Colombia)	1,023.87	0.39%	-0.03%	-3.05%	5.21%	7.22
▼ COLCAP (Colombia)	1,603.80	-0.70%	-1.54%	5.66%	13.67%	93.90
▼ S&P/BVL (Perú)*	23,552.38	-0.67%	-4.44%	-6.09%	11.56%	115.65
▼ S&P/BVL SEL (Perú)	618.24	-0.49%	-4.05%	-5.52%	9.70%	104.59
▼ S&P/BVL LIMA 25	33,877.84	-2.27%	-6.19%	-4.88%	11.90%	114.79
▼ IPC (México)	54,138.69	-0.06%	-2.06%	2.52%	1.63%	345.30
▼ S&P MILA 40	553.39	-0.58%	-1.36%	1.87%	24.40%	6,846.61

*Legend: Variation 1D: 1 day; 5D: 5 days; 1M: 1 Month; YTD: Var% 12/31/21 to date

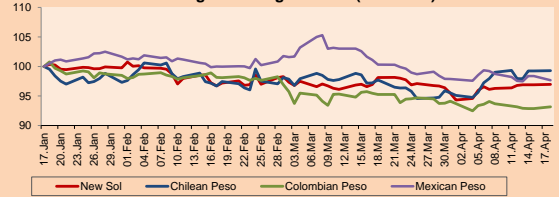


Source: Bloomberg

Currency	Price	1D*	5D*	30 D*	YTD*
▲ Sol (PEN)	3,7368	0.07%	0.60%	-1.18%	-6.56%
▲ Chilean Peso (CLP)	816.92	0.05%	-0.05%	1.61%	-4.12%
▲ Colombian Peso (COP)	3,733.42	0.32%	-0.15%	-2.19%	-8.50%
▼ Mexican Peso (MXN)	19.83	-0.72%	-0.57%	-2.62%	-3.42%

*Legend: Variation 1D: 1 day; 5D: 5 days; 1M: 1 Month; YTD: Var% 12/31/21 to date

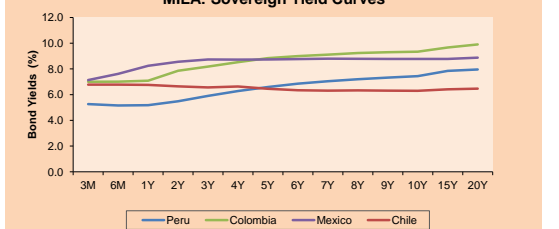
MILA: Foreign Exchange Indices (3 months)



Base: 17/01/22=100
Source: Bloomberg

Fixed Income	Currency	Price	Bid Yield (%)	Ask Yield (%)	Duration
PERU 7.35 07/21/25	USD	111.034	3.79	3.64	2.89
PERU 4.125 08/25/27	USD	100.88	3.99	3.89	4.76
PERU 8.75 11/21/33	USD	137.757	4.57	4.49	7.80
PERU 6.55 03/14/37	USD	119.569	4.74	4.68	9.54
PERU 5.625 11/18/2050	USD	116.227	4.62	4.58	14.86
CHILE 2.25 10/30/22	USD	100.305	2.05	1.28	0.52
CHILE 3.125 01/21/26	USD	99.001	3.48	3.34	3.50
CHILE 3.625 10/30/42	USD	96.725	4.67	4.60	13.72
COLOM 11.85 03/09/28	USD	142.513	3.84	3.64	4.57
COLOM 10.375 01/28/33	USD	130.754	6.48	6.29	6.96
COLOM 7.375 09/18/37	USD	106.839	6.71	6.61	9.34
COLOM 6.125 01/18/41	USD	91.677	6.95	6.90	10.60
MEX 4 10/02/23	USD	91.677	6.951	6.896	10.6
MEX5.55 01/45	USD	101.552	5.45	5.41	12.85

MILA: Sovereign Yield Curves



Source: Bloomberg

Equity

Largest gains	Exchange	Currency	Price	▲%
BUENAVENTURA-ADR	Peru	USD	11.05	4.7
ARCA CONTINENTAL	Mexico	MXN	127.54	3.1
FIBRA TERRA	Mexico	MXN	27.43	1.7
SURAMERICANA	Colombia	COP	36390.00	1.6
KIMBERLY-CLA M-A	Mexico	MXN	28.82	1.5

Largest losses	Exchange	Currency	Price	▼%
BANCO CRED INVER	Chile	Chile	27210.00	-5.22
CMPC	Chile	Chile	1319.00	-4.07
AERO DEL PACIF-B	Mexico	Mexico	292.78	-3.91
PARQUE ARAUCO	Chile	Chile	740.00	-3.64
EMPRESAS COPEC	Chile	Chile	6500.00	-3.63

Per Turnover	Exchange	Amount (US\$)
AMERICA MOVIL-L	Mexico	37,453,126.9
WALMART DE MEXIC	Mexico	31,122,190.8
GRUPO F BANORT-O	Mexico	29,203,237.8
SOQUIMICH-B	Chile	22,523,441.7
FOUMENTO ECON-UBD	Mexico	13,913,299.4

Per Volume	Exchange	Volume
ITAU CORPBANCA	Chile	370711238.0
ENEL CHILE SA	Chile	136796893.0
BANCO SANTANDER	Chile	62551140.0
BANCO DE CHILE	Chile	55889423.0
AMERICA MOVIL-L	Mexico	33353188.0

MILA

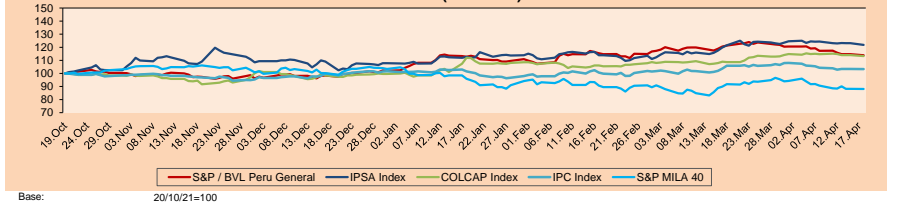
Peru: The LSE General index ended today's session with a negative result of -0.67%. The index maintains a positive annual cumulative trend of +11.56% in local currency, while the dollar-adjusted performance amounted to +19.19%. Next, the S&P/BVL Peru SEL varied by -0.49% while the S&P/BVL LIMA 25 by -2.93%. The spot PEN reached 5/3.7368. Headline: Dollar closes slightly higher at 3.738 amid negative forecast for the global economy.

Chile: The IPISA index ended the day with a negative return of -1.01%. The most benefited sectors of the day were Information Technologies (+1.51%) and Real Estate (+1.30%). The worst performing stocks were Empresas CMPC (-4%) and Parque Arauco SA (-3.51%).

Colombia: The COLCAP index ended the session with a negative return of -0.7%. The most negatively affected sectors of the day were Communication services (-1.59%) and Utilities (-1.42%). The worst performing stocks were Celsia SA (-2.51%) and Cementos Argos (-2.02%). Headline: Fuel costs are affecting airline ticket prices.

Mexico: The IPC index closed the day in negative territory with -0.06%. The worst performing sectors of the day were Industrials (-1.25%) and Health Care (-0.70%). The stocks with the worst return in today's session were Grupo Aeroport (-3.91%) and Cemex SAB (-2.75%). Headline: SAT wants to increase collection from large taxpayers with a master plan. Translated with www.DeepL.com/Translator (free version)

MILA: Stock Indices (6 months)

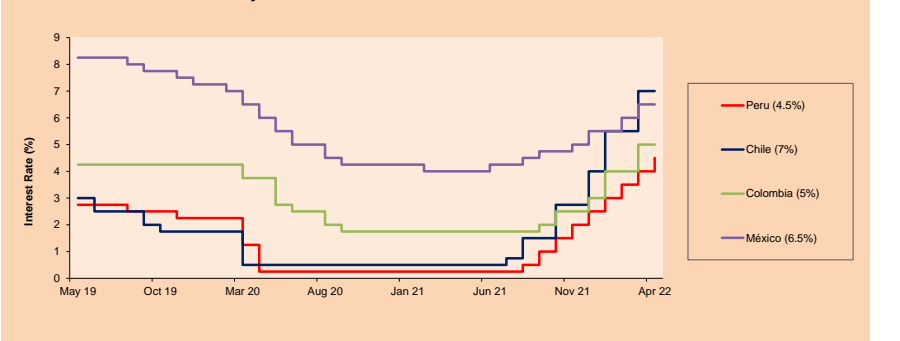


Base: 20/10/21=100
Source: Bloomberg

ETFs

ETFs	Curr.	Close	1D	5D	30 D	YTD	Exchange
▼ iShares MSCI All Peru Caped Index Fund	USD	34.81	-0.37%	-3.17%	-5.33%	17.52%	NYSE Arca
▼ iShares MSCI All Chile Caped Index Fund	USD	27.74	-0.36%	0.33%	-1.46%	20.14%	Cboe BZX
▲ Global X MSCI Colombia	USD	12.528	0.38%	0.87%	7.35%	25.37%	NYSE Arca
▲ iShares MSCI Mexico Capped	USD	53.42	1.44%	0.34%	1.58%	5.57%	NYSE Arca
▼ iShares MSCI Emerging Markets	USD	44.08	-0.34%	-0.65%	-2.82%	-9.76%	NYSE Arca
▼ Vanguard FTSE Emerging Markets	USD	45.26	-0.42%	-0.83%	-2.67%	-8.49%	NYSE Arca
▼ iShares Core MSCI Emerging Markets	USD	54.41	-0.20%	-0.53%	-2.42%	-9.10%	NYSE Arca
▼ iShares JP Morgan Emerging Markets Bonds	USD	60.41	-0.38%	-0.56%	-1.92%	-3.84%	Cboe BZX
▲ Morgan Stanley Emerging Markets Domestic	USD	4.78	1.06%	1.27%	-1.04%	-12.77%	New York

MILA: Policy Rate



Source: Bloomberg

Capital Market Laboratory Coordinator: MS Javier Penny Pestana
Collaboration: Sebastian Ore, Fabrizio Lavalle, Miguel Solimano y Jhonatan Cueva
email: pulsobursatil@ulima.edu.pe
facebook: www.facebook.com/pulsobursatil

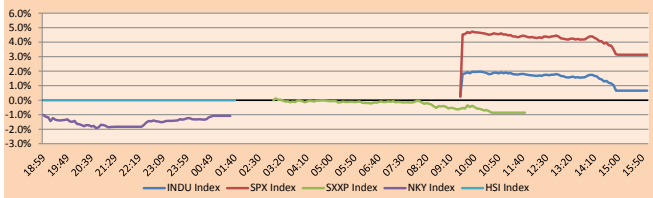
The content of this document is just for informational purposes. The information and opinions expressed should not be considered as recommendations for future decisions. Under any circumstances, the Capital Market Laboratory of University of Lima will be responsible for the use of the statements in this document.

WORLD

Main Indices	Close	1 D*	5 D*	1 M*	YTD*	Market Cap. (US\$ MIL.)
▼ Dow Jones (USA)	34,411.69	-0.11%	-0.89%	2.59%	-5.30%	10,941,249
▼ Standard & Poor's 500 (EEUU)	4,391.69	-0.02%	-2.15%	3.03%	-7.86%	38,697,436
▼ NASDAQ Composite (USA)	13,332.36	-0.14%	-2.76%	2.96%	-14.78%	22,779,882
▲ Stoxx EUROPE 600 (Europe)	459.82	0.67%	1.05%	5.68%	-5.74%	11,787,099
▲ DAX (Germany)	14,163.85	0.62%	0.61%	1.77%	-10.83%	1,389,735
▲ FTSE 100 (United Kingdom)	7,816.38	0.47%	0.86%	6.14%	3.14%	1,835,588
▲ CAC 40 (France)	6,589.35	0.72%	1.98%	3.69%	-7.88%	1,984,394
▲ IBEX 35 (Spain)	8,699.00	0.94%	2.74%	5.62%	-0.17%	535,314
▼ MSCI AC Asia Pacific Index	173.92	-0.44%	-1.20%	-2.51%	-9.94%	23,295,612
▼ HANG SENG (Hong Kong)	21,518.08	0.67%	-1.33%	16.85%	-8.03%	3,594,927
▼ SHANGHAI SE Comp. (China)	3,195.52	-0.48%	0.90%	-1.71%	-12.21%	6,702,869
▼ NIKKEI 225 (Japan)	28,799.71	-1.08%	-0.08%	-0.10%	-9.92%	3,818,676
▼ S&P / ASX 200 (Australia)	7,523.43	0.59%	1.08%	6.00%	1.06%	1,857,173
▼ KOSPI (South Korea)	2,693.21	-0.11%	0.00%	-0.51%	-9.55%	1,654,944

*Legend: Variation 1D: 1 Day; 5D: 5 Days; 1M: 1 Month; YTD: Var.% 12/31/21 to date

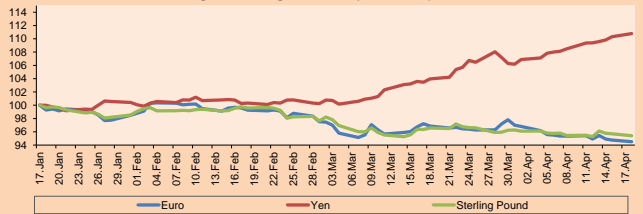
Global Markets: Intraday Evolution (var %)



Currency	Price	1 D*	5 D*	1 M*	YTD*
▼ Euro	1.0782	-0.26%	-0.94%	-2.43%	-5.17%
▲ Yen	126.9900	0.42%	1.29%	6.56%	10.35%
▼ Sterling Pound	1.3019	-0.31%	-0.08%	-1.21%	-3.79%
▼ Yuan	6.3671	-0.07%	-0.05%	0.09%	0.17%
▼ Hong Kong Dollar	7.8429	-0.01%	0.06%	0.24%	0.59%
▼ Brazilian Real	4.6531	-1.03%	-0.93%	-7.37%	-16.55%
▲ Argentine Peso	113.7365	0.71%	1.03%	3.70%	10.71%

*Legend: Variation 1D: 1 Day; 5D: 5 Days; 1M: 1 Month; YTD: Var.% 12/31/21 to date

Foreign Exchange Indices (3 months)

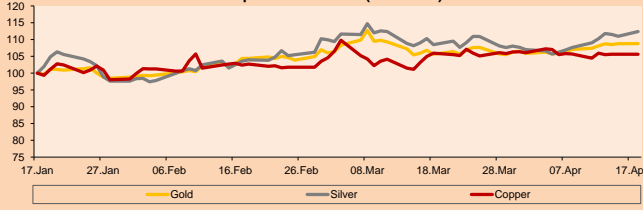


Base: 17/01/22=100
Source: Bloomberg

Commodities	Close	1 D*	5 D*	1 M*	YTD*
▲ Oro (US\$ Oz. T) (LME)	1,978.91	0.03%	1.30%	2.98%	8.18%
▲ Plata (US\$ Oz. T) (LME)	25.87	1.24%	3.06%	3.61%	10.97%
- Cobre (US\$ TM) (LME)	10,297.50	0.00%	1.14%	-0.29%	5.72%
- Zinc (US\$ TM) (LME)	4,475.00	0.00%	3.28%	17.07%	24.65%
▲ Petróleo WTI (US\$ Barril) (NYM)	108.21	1.18%	14.76%	4.97%	46.35%
- Estafío (US\$ TM) (LME)	43,318.00	0.00%	-1.09%	2.26%	10.02%
- Plomo (US\$ TM) (LME)	2,440.25	0.00%	2.43%	9.23%	4.38%
▲ Azúcar #11 (US\$ Libra) (NYB-ICE)	20.20	0.85%	0.00%	7.39%	9.84%
▼ Cacao (US\$ TM) (NYB-ICE)	2,578.00	-2.20%	-3.34%	0.39%	0.59%
- Café Arábica (US\$ TM) (NYB-ICE)	223.75	0.00%	-5.41%	1.87%	-0.67%

*Leyenda: Variación 1D: 1 Día; 5D: 5 Días; 1M: 1 Mes; YTD: Var.% 31/12/21 a la fecha

Principal Metals Index (3 months)



Base: 17/01/22=100
Source: Bloomberg

Equity

Germany (Stocks from DAX Index)

Largest gains	Curr.	Price	▲ %	Exchange	Largest losses	Curr.	Price	▼ %	Exchange
MRK GY	EUR	187.35	1.71	Xetra	ADS GY	EUR	197.76	-2.29	Xetra
DTE GY	EUR	17.3	1.43	Xetra	DHER GY	EUR	37.74	-2.13	Xetra
HEI GY	EUR	51.4	0.94	Xetra	1COV GY	EUR	42.94	-1.56	Xetra
DBK GY	EUR	10.896	0.81	Xetra	EOAN GY	EUR	10.06	-1.52	Xetra

Europe (Stocks from STOXX EUROPE 600)

Largest gains	Curr.	Price	▲ %	Exchange	Largest losses	Curr.	Price	▼ %	Exchange
SDF GY	EUR	33.99	4.94	Xetra	SBBB SS	EUR	34.29	-7.40	Vienna
WOSG LN	Gbp	1121	4.57	Londres	DOCS LN	Gbp	223.8	-6.67	Londres
TUI LN	Gbp	263.3	4.37	Stockholm	SINCH SS	EUR	59	-4.45	EN Paris
IAG LN	Gbp	140.3	3.79	Londres	KOJAMO FH	DKK	20.6	-4.45	Copenhagen

Global Overview:

United States:

The U.S. market closed with slightly negative performances. The DOW JONES index closed lower, due to the sell-off of defensive stocks, among which those related to health care stand out, thus limiting the gains of the energy and financial sectors. The worst performers in this index were Walt Disney Co/The (-2.07%) and Honeywell International Inc (-1.60%) as investors reacted adversely to statements made by journalist Jason Whitlock who accused Disney of purposely trying to feminize ESPN. Specifically, Honeywell was one of the index's biggest losers despite unveiling a "biofiber" that can improve tissue vision in critical surgical operations. Meanwhile, the S&P500 index also ended with a slightly negative performance due to losses in healthcare stocks (-1.12%) and consumer staples (-0.81%), in an unfavorable context of a depressed market sentiment due to the latest inflation report and expectations of interest rate hikes that could lead to a recession in the country. Finally, the NASDAQ index reached a similar performance, boosted by the statements of the St. Louis FED president, who indicated that a 75 basis points increase in the policy rate can be expected; while Powell has suggested hikes of 50 basis points for the next meeting on May 3-4. Thus, DOW JONES -0.11%; S&P 500 -0.02%; NASDAQ -0.14% ended the day with slightly negative results.

Europe:

The main European stock exchanges did not trade on Monday due to Easter celebrations.

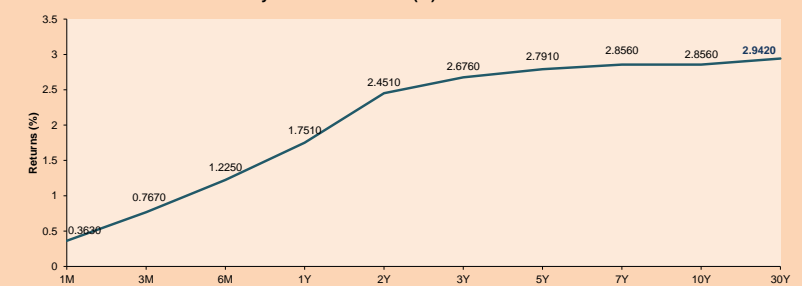
Asia:

The main Asian indices closed with mostly negative performances. The Chinese market closed lower in a context of investor pessimism about a much lower than expected cut in the reserve requirement ratio, which caused many shareholders to feel that it is not enough to reverse the low economic growth. The South Korean market closed in negative territory, as investors remained cautious, despite stronger than expected quarterly growth. Likewise, the Korean 3-year bond, the most liquid, rose 4.4 basis points, reaching a yield of 2.985%. The Hang Seng Index and the Australian market did not trade today due to the Easter Monday holiday. The Japanese NIKKEI, on the other hand, fell this session due to losses in the technology sector as many markets are still closed for Easter. Additionally, the Japanese Yen is on its longest losing streak in at least half a century, down 0.4% today, as investors are looking ahead to the Fed's monetary policy. Thus, NIKKEI -1.08%; HANG SENG did not trade; CSI 300 -0.53%; S&P/ASX 200 did not trade; KOSPI -0.11%; SHANGHAI COMPOSITE -0.49% ended with negative returns.

ETFs

ETFs	Curr.	Close	1D	5D	30 D	YTD	Exchange
SPDR S&P 500 ETF TRUST	USD	437.97	0.04%	-0.44%	-1.47%	-7.79%	NYSE Arca
ISHARES MSCI EMERGING MARKET	USD	44.08	-0.34%	-0.65%	-2.82%	-9.76%	NYSE Arca
ISHARES IBOXX HIGH YLD CORP	USD	80.11	-0.16%	0.53%	-2.93%	-7.93%	NYSE Arca
FINANCIAL SELECT SECTOR SPDR	USD	37.11	0.60%	-1.62%	-4.85%	-4.97%	NYSE Arca
VANECK GOLD MINERS ETF	USD	40.87	0.02%	3.60%	9.81%	27.60%	NYSE Arca
ISHARES RUSSELL 2000 ETF	USD	197.62	-0.67%	0.55%	-4.66%	-11.16%	NYSE Arca
SPDR GOLD SHARES	USD	184.61	0.31%	1.23%	2.96%	7.88%	NYSE Arca
ISHARES 20+ YEAR TREASURY BO	USD	120.15	-0.50%	-2.43%	-9.96%	-18.92%	NASDAQ GM
INVESCO QQQ TRUST SERIES 1	USD	338.69	0.08%	-0.65%	-3.64%	-14.87%	NASDAQ GM
ISHARES BIOTECHNOLOGY ETF	USD	127.10	-2.87%	-2.43%	-2.97%	-16.72%	NASDAQ GM
ENERGY SELECT SECTOR SPDR	USD	81.02	1.47%	5.03%	9.66%	45.98%	NYSE Arca
PROSHARES ULTRA VIX ST FUTUR	USD	13.12	-1.65%	-7.34%	-14.42%	5.55%	Cboe BZX
UNITED STATES OIL FUND LP	USD	80.41	1.06%	11.22%	7.73%	47.92%	NYSE Arca
ISHARES MSCI BRAZIL ETF	USD	37.49	0.67%	-0.29%	8.20%	33.56%	NYSE Arca
SPDR S&P OIL & GAS EXP & PR	USD	145.64	1.90%	6.28%	16.34%	51.91%	NYSE Arca
UTILITIES SELECT SECTOR SPDR	USD	75.68	-0.54%	-0.30%	6.88%	5.73%	NYSE Arca
ISHARES US REAL ESTATE ETF	USD	108.11	-0.36%	-0.48%	2.15%	-6.91%	NYSE Arca
SPDR S&P BIOTECH ETF	USD	83.59	-4.76%	-4.27%	-9.30%	-25.34%	NYSE Arca
ISHARES IBOXX INVESTMENT GRA	USD	114.50	-0.76%	-1.34%	-6.00%	-13.60%	NYSE Arca
ISHARES JP MORGAN US EMERGI	USD	93.66	-0.05%	-0.36%	-3.99%	-14.12%	NASDAQ GM
REAL ESTATE SELECT SECT SPDR	USD	48.64	-0.25%	-0.71%	2.99%	-6.12%	NYSE Arca
ISHARES CHINA LARGE-CAP ETF	USD	31.35	-0.92%	-0.51%	-5.49%	-14.30%	NYSE Arca
CONSUMER STAPLES SPDR	USD	78.19	-0.82%	-0.27%	5.39%	1.40%	NYSE Arca
VANECK JUNIOR GOLD MINERS	USD	50.68	-0.69%	4.95%	7.69%	20.87%	NYSE Arca
SPDR BLOOMBERG HIGH YIELD BO	USD	99.80	-0.12%	0.53%	-2.82%	-8.08%	NYSE Arca
VANGUARD REAL ESTATE ETF	USD	108.30	-0.40%	-0.28%	1.79%	-6.65%	NYSE Arca
GRAYSCALE BITCOIN TRUST BTC	USD	29.50	3.51%	6.19%	2.79%	-13.87%	OTC US

USA Treasury Bonds Yield Curve (%)



Source: Bloomberg

LIMA

Stocks

Ticker	Currency	Price	1D*	5D*	30D*	YTD*	Frequency	Volume (US\$)	Beta	Dividend Yield (%)	Price Earning	Market Cap. (M US\$)	Economic Sector*	Index Weight
▲ ALICORC1 PE**	S/.	5.01	0.39%	-0.03%	-3.05%	5.21%	100.00%	1,005,043	0.80	16.67	11.98	1,143.95	Industrial	3.53%
- ATACOB1 PE**	S/.	0.13	0.00%	0.00%	0.00%	8.33%	44.44%	35	1.00	0.00	-	31.60	Mining	1.02%
▼ BACKUS11 PE**	S/.	23.22	-0.13%	-0.56%	-2.44%	13.27%	83.33%	1,634	0.76	13.42	7.86	7,963.53	Industrial	0.82%
▼ BAP PE**	US\$	142.00	-1.73%	-5.33%	-15.42%	14.72%	100.00%	56,465	1.32	0.86	-	13,402.29	Diverse	5.82%
▲ BVN PE**	US\$	11.05	4.74%	5.74%	9.41%	51.37%	100.00%	777,071	1.25	0.00	-	3,040.54	Mining	5.88%
▲ CASAGRC1 PE**	S/.	9.12	-11.02%	-13.55%	-7.88%	0.22%	88.89%	106,654	0.90	59.23	5.50	205.58	Agricultural	1.31%
▼ BVVAC1 PE**	S/.	2.00	-4.76%	-9.09%	-9.09%	10.50%	94.44%	392,608	0.75	2.27	8.70	3,617.25	Finance	2.85%
▼ CORAREI1 PE**	S/.	1.77	-1.67%	-4.84%	-4.32%	2.91%	94.44%	227,156	0.81	15.57	2.68	708.97	Industrial	1.72%
▼ CPACASC1 PE**	S/.	4.49	-2.39%	-9.29%	-6.46%	-9.29%	100.00%	409,447	0.61	17.59	12.47	557.70	Industrial	2.38%
▼ CVERDEC1 PE**	US\$	42.59	-0.02%	-3.20%	-7.41%	14.40%	94.44%	1,553,569	0.99	4.36	12.51	14,908.89	Mining	5.25%
▼ ENGPEPC1 PE**	S/.	2.10	-4.55%	-11.02%	-8.70%	1.45%	100.00%	8,343	0.72	13.92	8.40	1,346.26	Public Services	1.44%
- ENDISPC1**	S/.	4.50	0.00%	0.45%	1.12%	12.50%	55.56%	5	0.84	0.00	8.72	768.98	Public Services	0.98%
▼ FERREYC1 PE**	S/.	2.44	-0.41%	-5.43%	-0.41%	19.02%	100.00%	489,369	0.89	8.06	5.50	637.09	Diverse	4.90%
▼ AENZAC1 PE**	S/.	1.31	-9.66%	-16.03%	4.80%	-4.38%	77.78%	190,796	0.92	0.00	-	305.67	Diverse	4.05%
- IFS PE**	US\$	31.90	0.00%	-3.33%	-5.06%	18.81%	100.00%	103,644	1.12	4.45	7.68	3,681.83	Diverse	7.22%
- INRETC1 PE**	US\$	36.50	0.00%	-2.67%	-1.08%	4.43%	94.44%	417,210	0.71	3.73	40.44	3,752.47	Diverse	5.28%
- LUSURC1 PE**	S/.	17.00	0.00%	0.00%	0.00%	19.38%	61.11%	31,290	0.00	0.00	14.31	2,215.31	Public Services	1.81%
▼ MINSUR1 PE**	S/.	5.70	-3.39%	-6.56%	-6.56%	44.30%	100.00%	214,193	1.02	12.06	2.66	4,397.64	Mining	3.09%
- PML PE**	US\$	0.14	0.00%	0.00%	0.00%	16.67%	55.56%	30,546	1.09	0.00	-	35.96	Mining	2.12%
▼ SCCO PE**	US\$	73.58	-0.04%	-0.16%	-0.78%	19.10%	94.44%	219,690	1.18	4.89	16.20	56,883.97	Industrial	2.12%
▼ SIDERC1 PE**	S/.	1.48	-4.52%	-23.32%	-6.33%	-7.50%	94.44%	80,332	0.75	42.36	3.21	277.24	Mining	2.14%
▼ TV PE**	US\$	1.12	-22.76%	-13.85%	2.75%	-13.85%	100.00%	149,971	1.08	0.00	-	110.82	Industrial	1.43%
▼ UNACEMC1 PE**	S/.	1.87	-4.10%	-11.79%	-15.00%	-22.08%	100.00%	301,001	1.05	5.35	-	909.84	Mining	2.93%
▼ VOLCABC1 PE**	S/.	0.86	-2.27%	-5.49%	-1.15%	43.33%	100.00%	824,350	0.85	0.00	24.20	1,829.91	Industrial	3.00%
- BROCALC1 PE**	S/.	7.90	0.00%	0.00%	-1.25%	51.92%	44.44%	14,799	0.00	1.09	59.40	314.16	Mining	5.90%
- RIMSEGC1 PE**	S/.	0.85	0.00%	0.00%	0.00%	-1.16%	16.67%	245	0.00	0.00	16.13	375.73	Finance	3.09%
- CORAREC1 PE**	US\$	2.47	0.00%	0.00%	7.39%	30.00%	61.11%	235,552	0.00	11.16	3.74	2,649.29	Mining	2.12%
- ENGIEC1 PE**	S/.	6.43	0.00%	0.00%	-1.08%	9.73%	50.00%	4	0.48	0.00	15.81	1,034.79	Diversas	2.12%
▼ GBVLAC1 PE**	S/.	2.52	-1.18%	-1.18%	-1.18%	-7.35%	44.44%	8,207	0.00	4.00	26.19	122.80	Diversas	2.14%

Quantity of shares: 29
 Source: Bloomberg, Economatika
 * Bloomberg Industry Classification System
 ** PER is used in the stock market and original currency of the instrument
 *Legend: Variation 1D: 1 Day; 5D: 5 Days, 1M: 1 Month; YTD: Var.% 12/31/21 to date

Up 2
 Down 17
 Hold 10

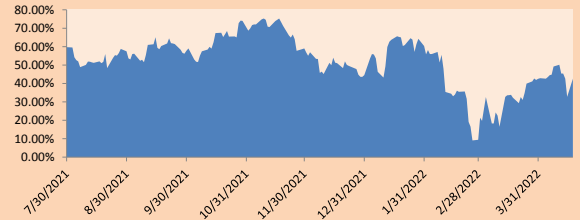
Sectorial Indices

	Close	1D*	5D*	30D*	YTD*	Beta
▲ S&P/BVLMining	492.64	0.35%	0.50%	-0.80%	19.69%	1.16
▼ S&P/BVLConsumer	1,113.11	-0.44%	-5.10%	-6.28%	-3.04%	0.58
▼ S&P/BVLIndustrials	259.53	-2.64%	-8.01%	-3.82%	0.57%	0.59
▼ S&P/BVLFinancials	975.37	-1.59%	-4.64%	-15.10%	7.64%	1.40
▼ S&P/BVLConstruction	266.36	-3.62%	-9.13%	-5.27%	-6.01%	0.50
▼ S&P/BVLPublicSvcs	601.50	-1.37%	-2.69%	-1.24%	9.66%	0.04
▼ S&P/BVLElectricUtil	587.21	-1.37%	-2.69%	-1.24%	9.66%	0.04

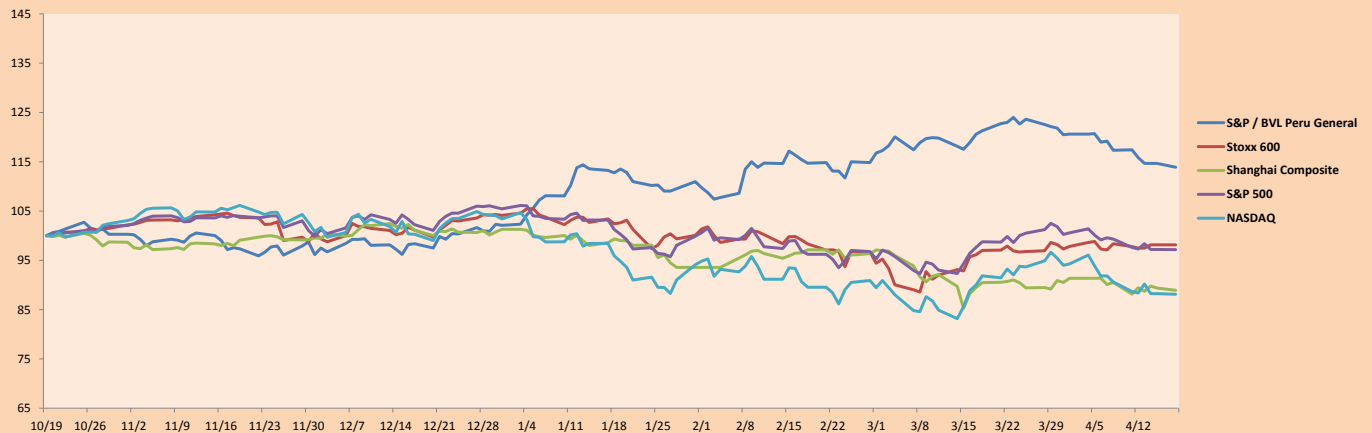
S&P/BVLConstructionTRPEN

*Legend: Variation 1D: 1 Day; 5D: 5 Days, 1M: 1 Month; YTD: Var.% 12/31/21 to date

Correlation Graph of Returns of Mining Index against Metallic Index of London (3 months)



Indices (6 months)



Base: 19/10/21=100
 Source: Bloomberg

Capital Market Laboratory Coordinator: MS Javier Penny Pestana
 Collaboration: Sebastian Ore, Fabrizio Lavalle, Miguel Solimano y Jhonatan Cueva
 email: pulsobursatil@ulima.edu.pe
 facebook: www.facebook.com/pulsobursatil.u

SOVEREIGN RATING

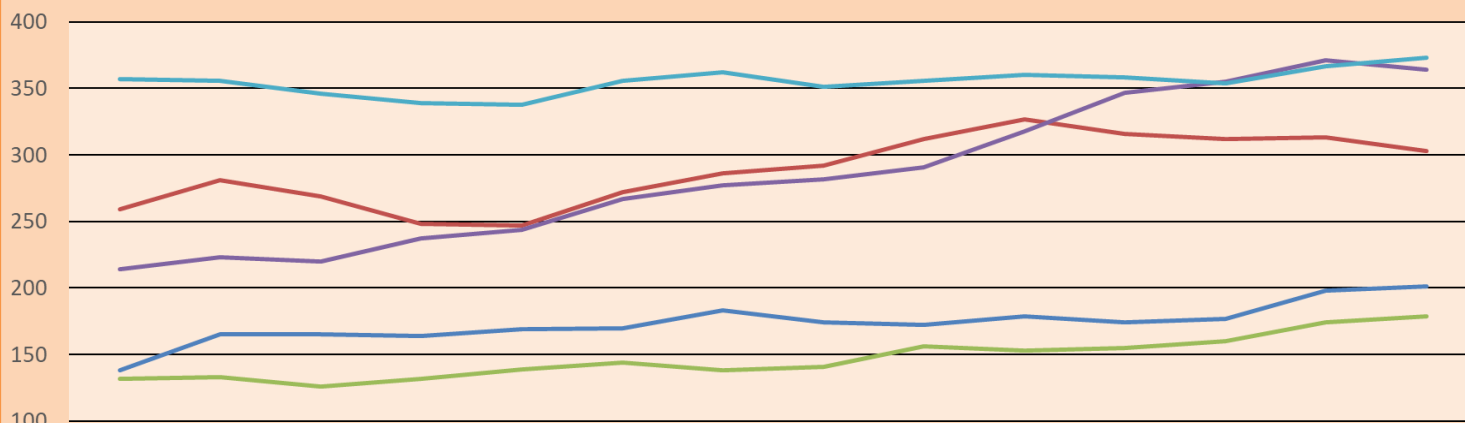
RISK RATINGS			
Moody's	S&P	Fitch	
Aaa	AAA	AAA	Prime
Aa1	AA+	AA+	High credit quality
Aa2	AA	AA	
Aa3	AA-	AA-	
A1	A+	A+	Medium-high grade, with low credit risk
A2	A	A	
A3	A-	A-	
Baa1	BBB+	BBB+	Moderate Credit Risk
Baa2	BBB	BBB	
Baa3	BBB-	BBB-	
Ba1	BB+	BB+	It has speculative elements and it is subject to substantial credit risk
Ba2	BB	BB	
Ba3	BB-	BB-	
B1	B+	B+	It is considered speculative and it has high credit risk
B2	B	B	
B3	B-	B-	
Caa1	CCC+		Bad credit conditions and it is subject to high credit risk
Caa2	CCC		
Caa3	CCC-	CCC	
Ca	C		Very close to default or in default
		DDD	
C	D	DD D	

Source: Bloomberg

Latin America Credit Rating			
Clasificadora de riesgo			
Country	Moody's	Fitch	S&P
Peru	Baa1	BBB	BBB
México	Ba2	BB-	BB-
Venezuela	C	WD	NR
Brazil	Ba2	BB-	BB-
Colombia	Baa2	BB+	BB+
Chile	A1	A-	A
Argentine	Ca	WD	CCC+
Panama	Baa2	BBB-	BBB

Source: Bloomberg

LATAM Country Risk(bps)



	Feb-21	Mar-21	Abr-21	May-21	Jun-21	Jul-21	Ago-21	Set-21	Oct-21	Nov-21	Dic-21	Ene-22	Feb-22	Mar-22
Perú	138	165	165	164	169	170	183	174	172	179	174	177	198	201
Brasil	259	281	269	248	247	272	286	292	312	327	316	312	313	303
Chile	132	133	126	132	139	144	138	141	156	153	155	160	174	179
Colombia	214	223	220	237	244	267	277	282	291	318	347	355	371	364
México	357	356	346	339	338	356	362	351	356	360	358	354	367	373

Source: BCRP

Capital Market Laboratory Coordinator: MS Javier Penny Pestana
Collaboration: Sebastian Ore, Fabrizio Lavallo, Miguel Solimano y Jhonatan Cueva
email: pulsobursatil@ulima.edu.pe
facebook: www.facebook.com/pulsobursatil.ul