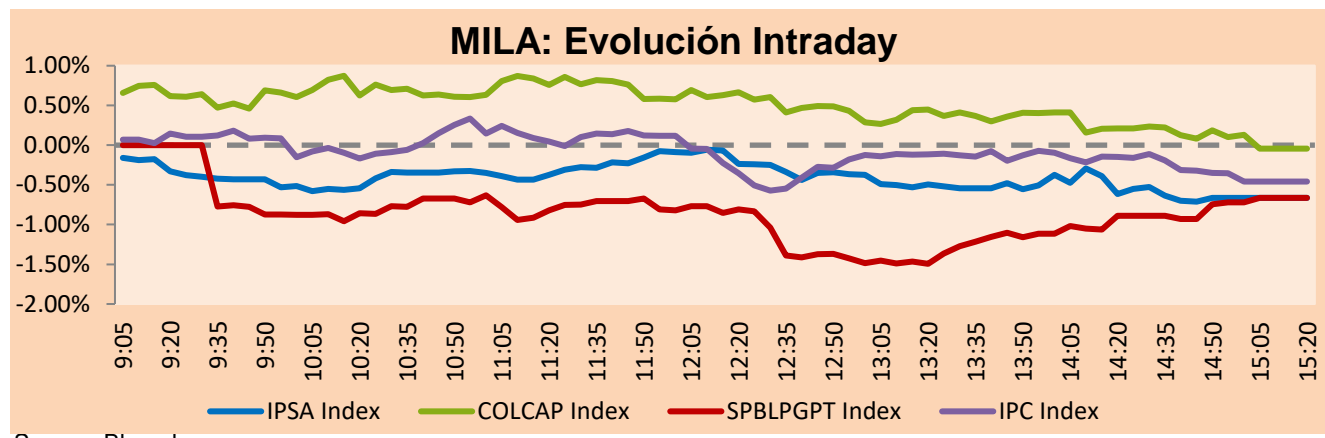


MILA

Lima, April 26, 2022

Main Indexes	Close	1 D	5 D	1 M	YTD	Cap. Burs. (US\$ bill)
▼ IPSA (Chile)	4,701.47	-1.21%	-4.28%	-5.31%	9.12%	102.87
▼ IGPA (Chile)	23,953.77	-1.44%	-5.15%	-5.13%	11.07%	118.33
▼ COLSC (Colombia)	982.84	-0.80%	-3.99%	-6.24%	1.00%	6.61
▼ COLCAP (Colombia)	1,575.37	-0.04%	-1.76%	-1.96%	11.65%	87.08
▼ S&P/BVL (Perú)*	22,171.42	-0.66%	-5.09%	-13.28%	5.02%	104.44
▼ S&P/BVL SEL (Perú)	585.04	-0.36%	-4.55%	-11.90%	3.81%	94.33
▲ S&P/BVL LIMA 25	32,055.60	0.01%	-5.29%	-11.06%	5.89%	103.60
▼ IPC (México)	52,512.71	-0.36%	-3.88%	-5.27%	-1.43%	325.46
▼ S&P MILA 40	502.47	-0.92%	-8.30%	-12.04%	12.95%	6,650.12

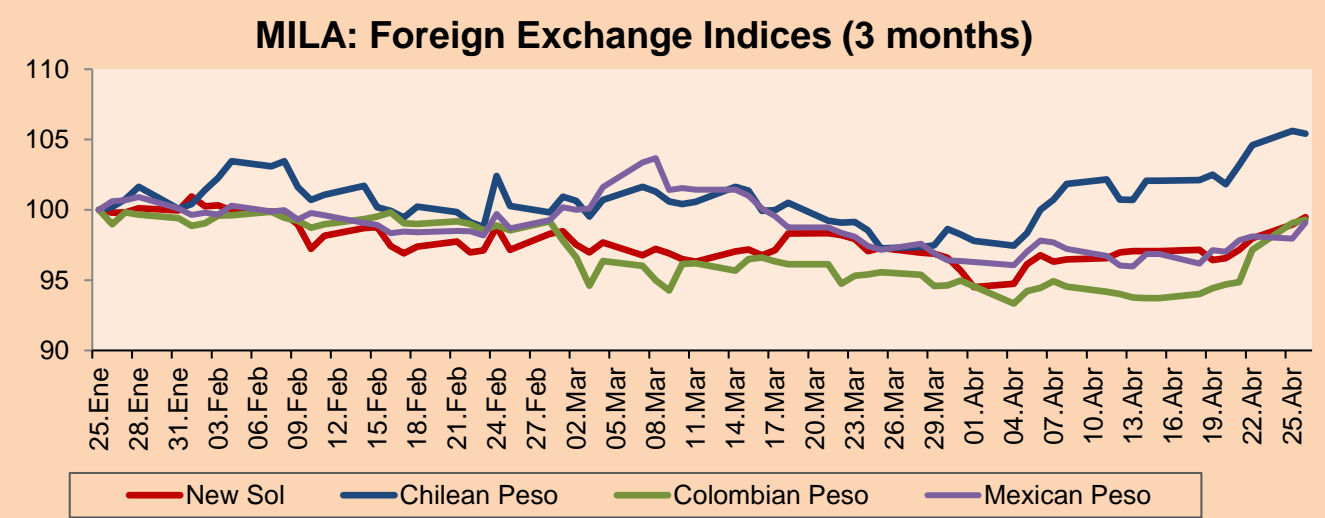
*Legend: Variation 1D: 1 day; 5D: 5 days; 1M: 1 Month; YTD: Var% 12/31/21 to date



Source: Bloomberg

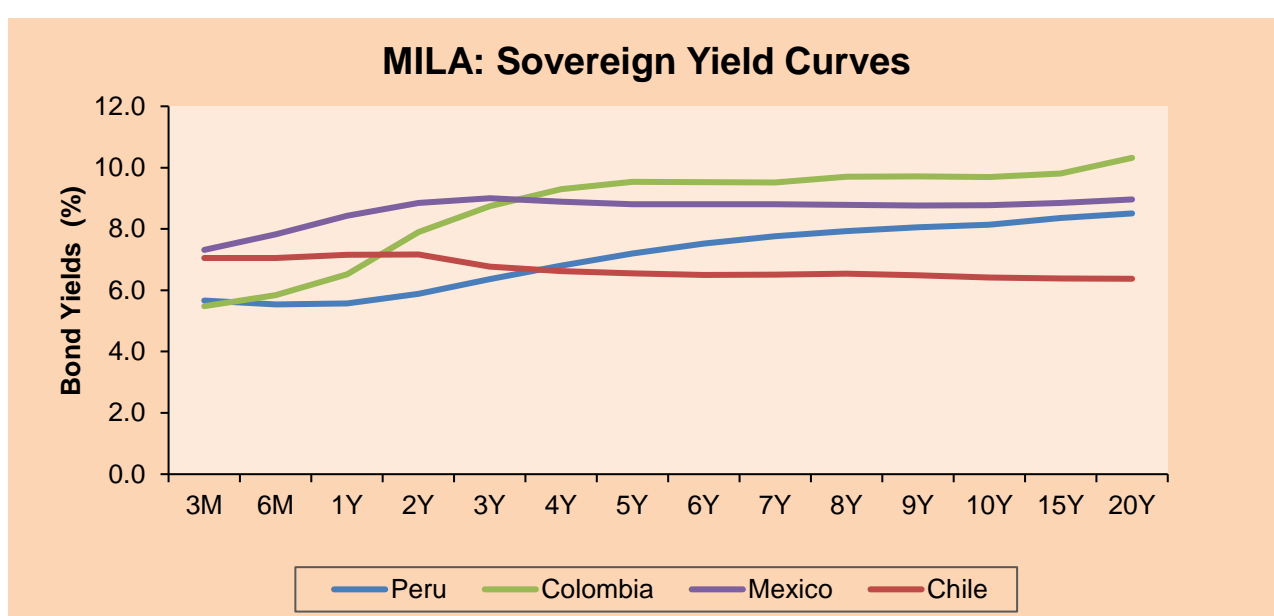
Currency	Price	1D*	5D*	30 D*	YTD*
▲ Sol (PEN)	3,8263	0.54%	3.16%	2.37%	-4.32%
▼ Chilean Peso (CLP)	843.43	-0.18%	2.85%	8.40%	-1.01%
▲ Colombian Peso (COP)	3,942.93	0.24%	5.15%	3.92%	-3.37%
▲ Mexican Peso (MXN)	20.43	1.16%	2.02%	1.99%	-0.47%

*Legend: Variation 1D: 1 day; 5D: 5 days; 1M: 1 Month; YTD: Var% 12/31/21 to date



Base: 25/01/22=100
Source: Bloomberg

Fixed Income	Currency	Price	Bid Yield (%)	Ask Yield (%)	Duration
PERU 7.35 07/21/25	USD	110.154	4.02	3.91	2.86
PERU 4.125 08/25/27	USD	100.405	4.09	3.99	4.72
PERU 8.75 11/21/33	USD	135.67	4.76	4.67	7.71
PERU 6.55 03/14/37	USD	117.675	4.90	4.83	9.43
PERU 5.625 11/18/2050	USD	113.078	4.80	4.76	14.57
CHILE 2.25 10/30/22	USD	100.246	2.15	1.37	0.50
CHILE 3.125 01/21/26	USD	98.62	3.60	3.44	3.48
CHILE 3.625 10/30/42	USD	85.18	4.80	4.73	13.55
COLOM 11.85 03/09/28	USD	142.955	3.74	3.55	4.53
COLOM 10.375 01/28/33	USD	134.108	6.11	5.93	6.95
COLOM 7.375 09/18/37	USD	106.244	6.77	6.67	9.27
COLOM 6.125 01/18/41	USD	91.41	6.98	6.92	10.50
MEX 4 10/02/23	USD	91.41	6.982	6.92	10.5
MEX5.55 01/45	USD	100.302	5.56	5.50	12.64



Source: Bloomberg

Equity

Largest gains	Exchange	Currency	Price	▲%	Largest losses	Exchange	Currency	Price	▼%
SURAMERICANA	Colombia	COP	37500.00	5.63	INDUSTRIAS PENOL	Mexico	MXN	226.74	-4.72
FERREYCORP SAA	Peru	PEN	2.27	5.58	ENEL CHILE SA	Chile	CLP	22.35	-4.57
AERO DEL PACIF-B	Mexico	MXN	304.97	5.12	PARQUE ARAUCO	Chile	CLP	701	-4.37
AERO DEL SURES-B	Mexico	MXN	426.68	4.09	SONDA SA	Chile	CLP	291.9	-4.30
CAP	Chile	CLP	9540.00	3.25	SOQUIMICH-B	Chile	CLP	60101	-4.00

Per Turnover	Exchange	Amount (US\$)	Per Volume	Exchange	Volume
AMERICA MOVIL-L	Mexico	65,994,421	ITAU CORPBANCA	Chile	586,802,934
WALMART DE MEXIC	Mexico	54,203,739	BANCO SANTANDER	Chile	314,110,286
SOQUIMICH-B	Chile	47,538,990	BANCO DE CHILE	Chile	127,230,036
GRUPO MEXICO-B	Mexico	46,400,984	ENEL CHILE SA	Chile	91,437,941
GRUPO F BANORT-O	Mexico	40,553,658	AMERICA MOVIL-L	Mexico	62,773,833

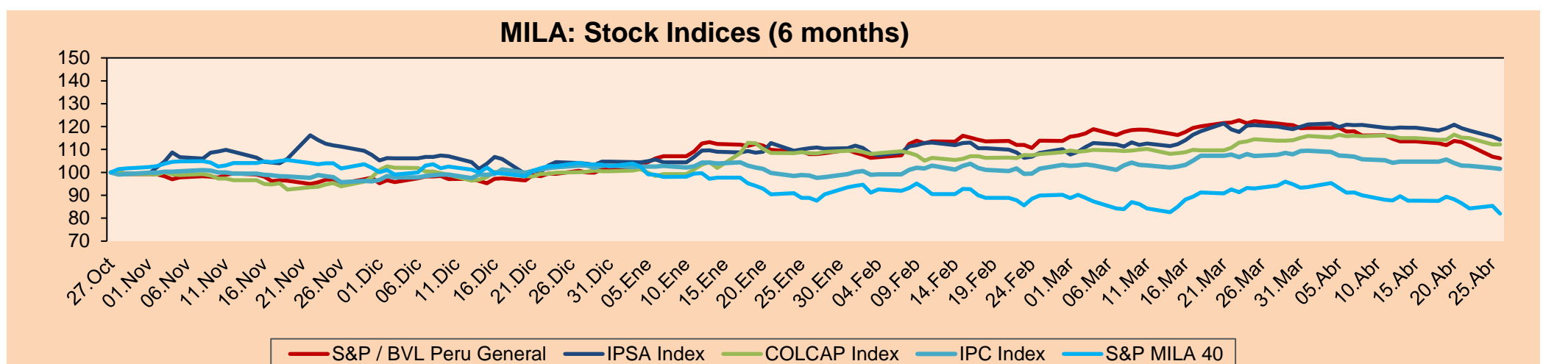
MILA

Peru: The BVL General index ended today's session with a negative result of -0.66%. The index maintains a positive annual cumulative trend of +5.02% in local currency, while the dollar-adjusted performance amounted to +9.76%. Then, the S&P/BVL Peru SEL varied by -0.36% while the S&P/BVL LIMA 25 by +0.01%. The PEN spot reached S/3.8230. Headline: Susalud: There will be a single fee schedule to attend emergencies in public hospitals and private clinics.

Chile: The IPSA index ended the day with a negative return of -1.21%. The most damaged sectors of the day were Information Technology (-4.30%) and Materials (-3.11%). The worst performing stocks were Enel Chile SA (-4.57%) and Parque Arauco SA (-4.37%). Headline: Gabriel Boric's popularity in Chile falls from 50% to 36% in less than two months in office.

Colombia: The COLCAP index ended the session with a negative return of -0.04%. The worst performing sectors of the day were Consumer Discretionary (-5.00%) and Communication Services (-1.67%). The worst performing stocks were Organización Terpel SA (-5.00%) and Mineros SA (-2.26%). Headline: Poverty in Colombia by 2021 would be close to 40.1%.

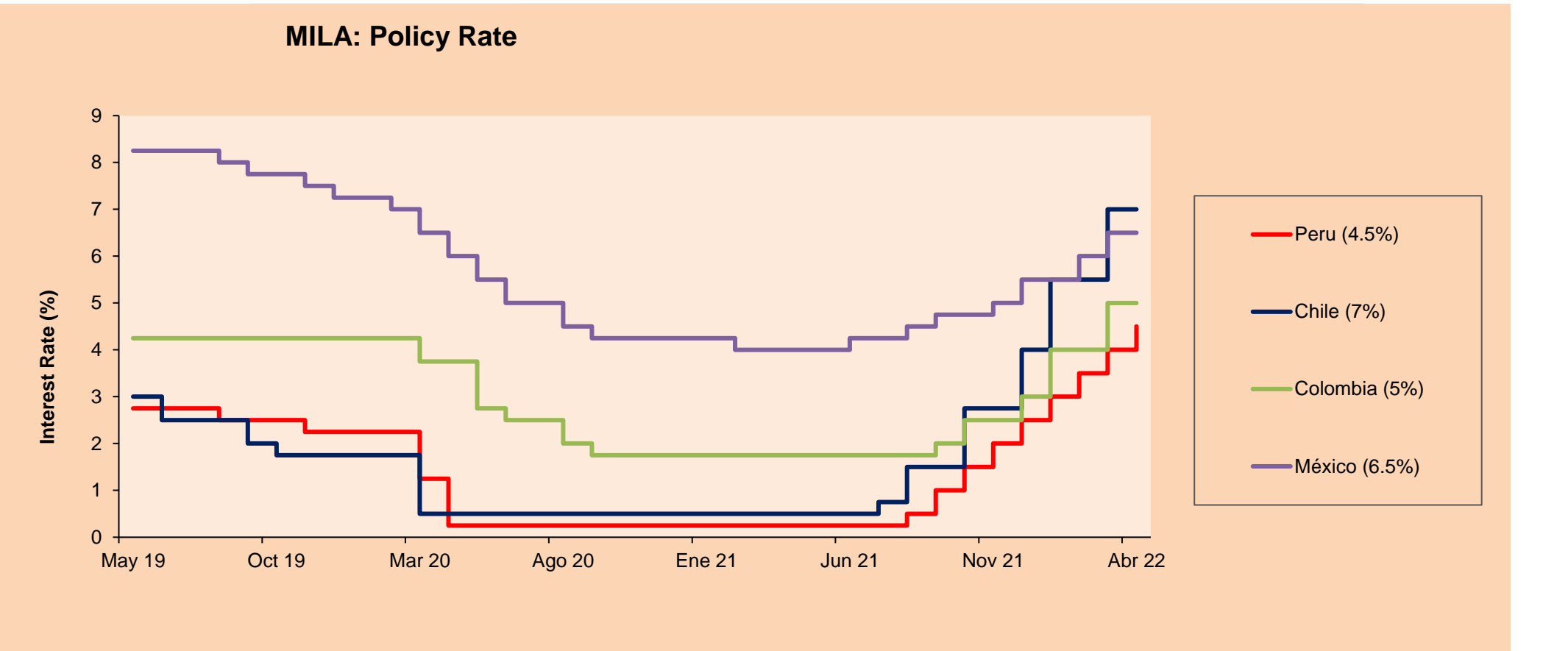
Mexico: The IPC index closed the day in negative territory, -0.36%. The worst performing sectors of the day were Consumer Discretionary (-2.39%) and Financials (+2.08%). The worst performing stocks Qualitas Controladora SAB de CV (-5.04%) and Industrias Peñoles SAB de CV (-4.72%). Headline: IMF estimates a drop in Mexico's economic growth for 2022.



Base: 28/10/21=100
Source: Bloomberg

ETFs

ETFs	Curr.	Close	1D	5D	30 D	YTD	Exchange
▼ iShares MSCI All Peru Caped Index Fund	USD	31.18	-1.67%	-10.38%	-17.29%	5.27%	NYSE Arca
▼ iShares MSCI All Chile Caped Index Fund	USD	25.43	-1.55%	-8.69%	-14.61%	10.13%	Cboe BZX
▼ Global X MSCI Colombia	USD	11.44	-2.14%	-7.67%	-6.92%	14.48%	NYSE Arca
▼ iShares MSCI Mexico Capped	USD	50.41	-1.70%	-5.21%	-5.92%	-0.38%	NYSE Arca
▼ iShares MSCI Emerging Markets	USD	41.15	-2.19%	-6.18%	-8.66%	-15.76%	NYSE Arca
▼ Vanguard FTSE Emerging Markets	USD	42.26	-2.02%	-6.15%	-8.31%	-14.56%	NYSE Arca
▼ iShares Core MSCI Emerging Markets	USD	50.88	-2.23%	-6.11%	-8.19%	-15.00%	NYSE Arca
▼ iShares JP Morgan Emerging Markets Bonds	USD	58.03	-1.34%	-3.36%	-4.40%	-7.62%	Cboe BZX
▼ Morgan Stanley Emerging Markets Domestic	USD	4.62	-1.28%	-2.33%	-4.74%	-15.69%	New York



Source: Bloomberg

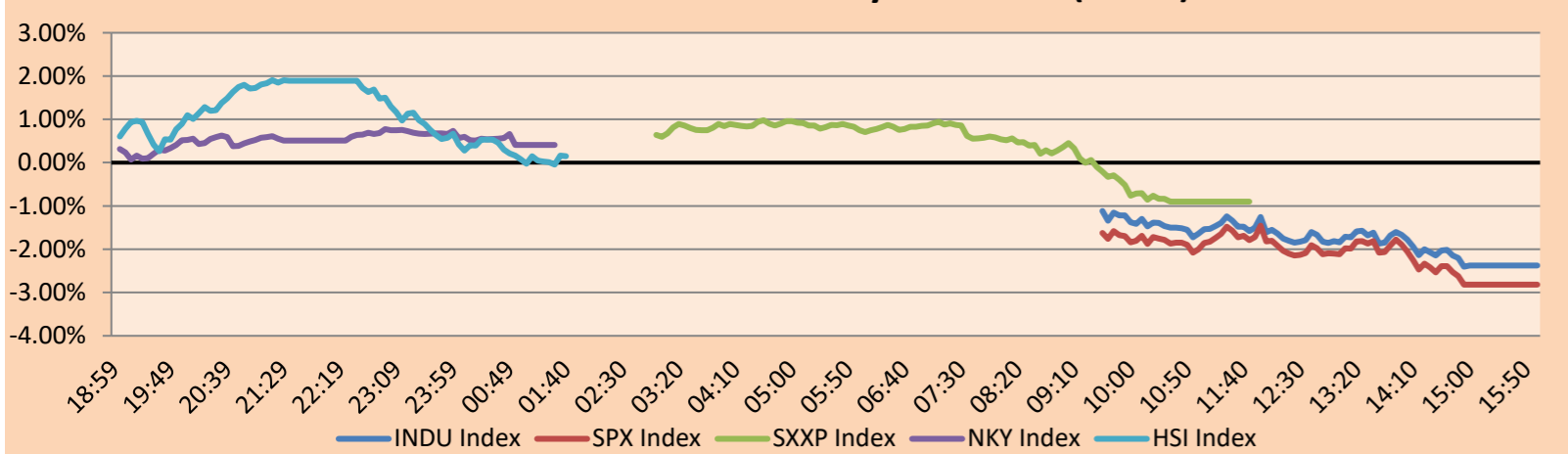
Capital Market Laboratory Coordinator: MS Javier Penny Pestana
Collaboration: Sebastian Ore, Fabrizio Lavalle, Miguel Solimano y Jhonatan Cueva
email: pulsobursatil@ulima.edu.pe
facebook: www.facebook.com/pulsobursatil.ul

WORLD

Main Indices	Close	1 D*	5 D*	1 M*	YTD*	Market Cap. (US\$ Mill.)
▼ Dow Jones (USA)	33,240.18	-2.38%	-4.79%	-4.65%	-8.53%	10,849,162
▼ Standard & Poor's 500 (EEUU)	4,175.20	-2.81%	-6.43%	-8.10%	-12.40%	37,843,454
▼ NASDAQ Composite (USA)	12,490.74	-3.95%	-8.29%	-11.85%	-20.16%	22,179,351
▼ Stoxx EUROPE 600 (Europe)	441.10	-0.90%	-3.33%	-2.75%	-9.57%	11,454,786
▼ DAX (Germany)	13,756.40	-1.20%	-2.81%	-3.84%	-13.40%	1,367,189
▲ FTSE 100 (United Kingdom)	7,386.19	0.08%	-2.83%	-1.30%	0.02%	1,640,050
▼ CAC 40 (France)	6,414.57	-0.54%	-1.84%	-2.12%	-10.32%	1,944,302
▼ IBEX 35 (Spain)	8,439.30	-1.58%	-2.93%	1.30%	-3.15%	525,823
▼ MSCI AC Asia Pacific Index	165.90	-2.09%	-3.69%	-7.49%	-14.10%	21,834,613
▲ HANG SENG (Hong kong)	19,934.71	0.33%	-5.20%	-6.87%	-14.80%	3,224,308
▼ SHANGHAI SE Comp. (China)	2,886.43	-1.44%	-9.63%	-10.14%	-20.70%	5,890,596
▲ NIKKEI 225 (Japan)	26,700.11	0.41%	-1.06%	-5.15%	-7.26%	3,595,281
▼ S&P / ASX 200 (Australia)	7,317.98	-2.08%	-2.73%	-1.19%	-1.70%	1,746,539
▲ KOSPI (South Korea)	2,668.31	0.42%	-1.86%	-2.26%	-10.39%	1,618,146

*Legend: Variation 1D: 1 Day; 5D: 5 Days; 1M: 1 Month; YTD: Var.% 12/31/21 to date

Global Markets: Intraday Evolution (var %)

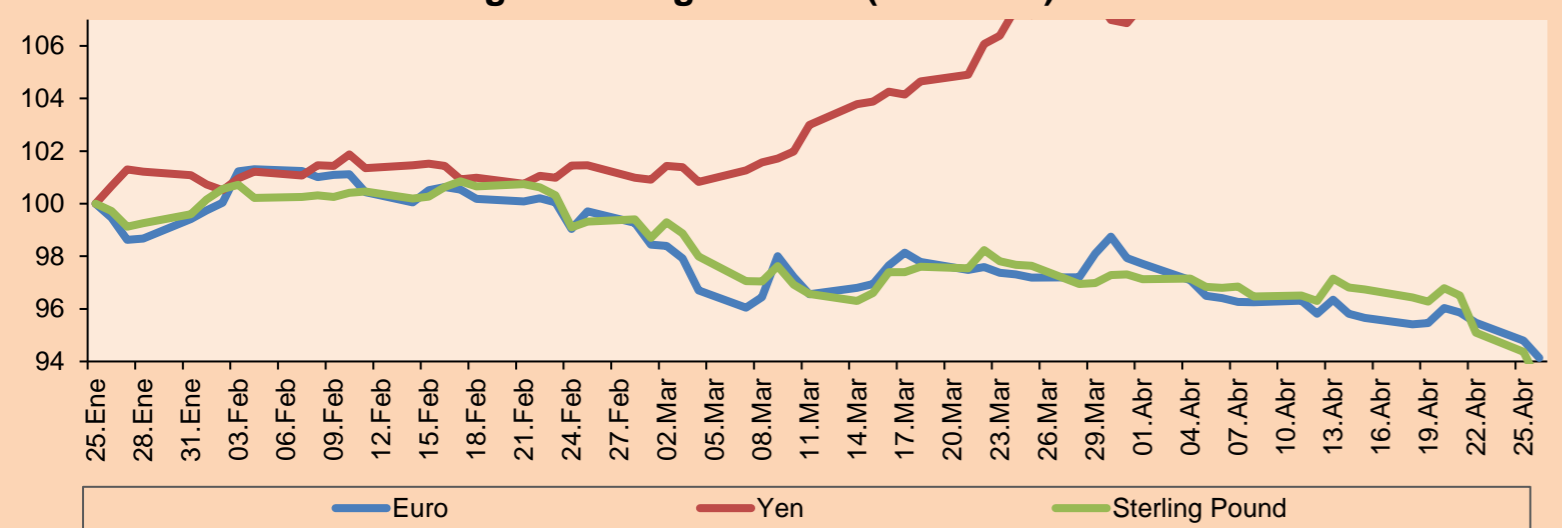


Source: Bloomberg

Currency	Price	1 D*	5 D*	1 M*	YTD*
▼ Euro	1.0638	-0.70%	-1.39%	-3.14%	-6.44%
▼ Yen	127.2300	-0.71%	-1.30%	4.24%	10.56%
▼ Sterling Pound	1.2574	-1.31%	-3.26%	-4.61%	-7.08%
▼ Yuan	6.5566	-0.04%	2.55%	2.99%	3.15%
▼ Hong Kong Dollar	7.8453	-0.03%	0.04%	0.22%	0.62%
▲ Brazilian Real	4.9981	2.48%	7.07%	5.38%	-10.36%
▲ Argentine Peso	114.8373	0.13%	0.93%	4.04%	11.78%

*Legend: Variation 1D: 1 Day; 5D: 5 Days; 1M: 1 Month; YTD: Var.% 12/31/21 to date

Foreign Exchange Indices (3 months)

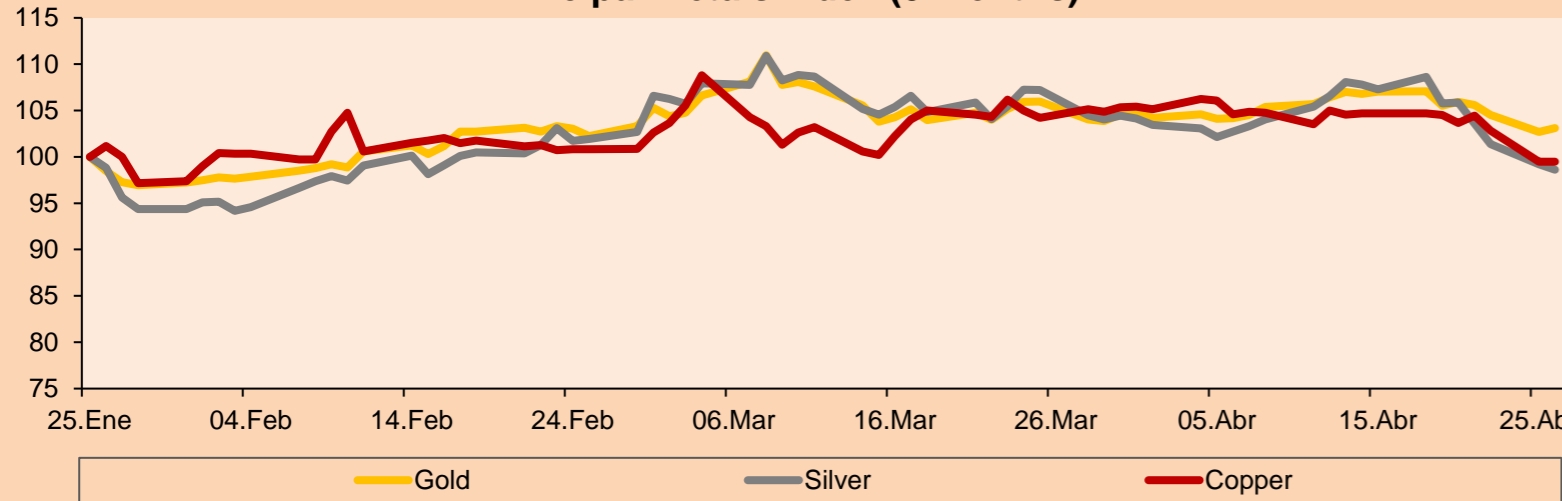


Base: 25/01/22=100
Source: Bloomberg

Commodities	Close	1 D*	5 D*	1 M*	YTD*
▲ Oro (US\$ Oz. T) (LME)	1,905.51	0.40%	-2.29%	-2.70%	4.17%
▼ Plata (US\$ Oz. T) (LME)	23.48	-0.59%	-6.74%	-8.00%	0.75%
- Cobre (US\$ TM) (LME)	9,783.80	0.00%	-4.84%	-4.54%	0.44%
- Zinc (US\$ TM) (LME)	4,222.75	0.00%	-7.46%	3.62%	17.63%
▲ Petróleo WTI (US\$ Barril) (NYM)	101.70	3.21%	-0.34%	-8.43%	38.61%
- Estaño (US\$ TM) (LME)	40,189.00	0.00%	-7.16%	-5.52%	2.07%
- Plomo (US\$ TM) (LME)	2,323.15	0.00%	-5.12%	-1.28%	-0.62%
▲ Azúcar #11 (US\$ Libra) (NYB-ICE)	18.93	0.26%	-3.76%	-2.72%	2.94%
▲ Cacao (US\$ TM) (NYB-ICE)	2,507.00	0.80%	-2.83%	-3.58%	-2.18%
▲ Café Arábica (US\$ TM) (NYB-ICE)	221.15	0.20%	-0.25%	-0.29%	-1.82%

*Leyenda: Variación 1D: 1 Día; 5D: 5 Días; 1M: 1 Mes; YTD: Var.% 31/12/21 a la fecha

Principal Metals Index (3 months)



Base: 25/01/22=100
Source: Bloomberg

Equity

Germany (Stocks from DAX Index)

Largest gains	Curr.	Price	▲ %	Exchange	Largest losses	Curr.	Price	▼ %	Exchange
HNR1 GY	EUR	146.4	0.97	Xetra	DNHR GY	EUR	28.9	-7.52	Xetra
DB1 GY	EUR	165.35	0.85	Xetra	CON GY	EUR	62.68	-4.01	Xetra
MTX GY	EUR	189.95	0.48	Xetra	PAH3 GY	EUR	76.22	-3.84	Xetra
ALV GY	EUR	213.3	0.31	Xetra	IFX GY	EUR	26.985	-3.23	Xetra

Europe (Stocks from STOXX EUROPE 600)

Largest gains	Curr.	Price	▲ %	Exchange	Largest losses	Curr.	Price	▼ %	Exchange
TEN IM	EUR	14.07	3.53	Borsa Italiana	EQT SS	SEK	281.4	-12.88	Stockholm
GLEN LN	GBp	464.8	3.44	Londres	ALFA SS	SEK	274.8	-11.55	Stockholm
MAERSKB DC	DKK	18730	3.17	Copenhagen	EO FP	EUR	20.45	-10.74	EN Paris
BP/ LN	GBp	379.45	2.87	Londres	ALE PW	PLN	24.615	-9.02	Warsaw

Global Overview:

United States:

The U.S. market closed with negative performances in a context marked by investors' concerns about an economic slowdown and the release of disappointing quarterly results. The DOW JONES index closed with losses where the sectors that drove this performance were associated with Information Technology (-3.32%) and Industrials (-3.25%). However, new orders for U.S. manufactured capital goods rebounded more than expected, suggesting that business spending on equipment has had a strong boost, as well as a drop in consumer confidence. On the other hand, the S&P500 index also ended with a negative performance, after the presence of doubts in the market since it is expected that corporate earnings will not be resilient enough since General Motors (-10.34%) fell after showing that its earnings forecast was lower than expected, as well as Tesla (-12.18%) since Elon Musk agreed to use his fortune to buy Treasury bonds in order to finance the purchase of Twitter. Finally, the NASDAQ index was the most affected of the session after a possible more restrictive policy by the Federal Reserve, likewise, the stock that had the worst return was Therapeutics (-31%), after it was announced the disapproval on the main valuation criteria for the 450mg BID dose of its candidate drug PN-943. Thus, DOW JONES -2.38%; S&P 500 -2.81%; NASDAQ -3.95% ended the day with negative results.

Europe:

Major European indices ended the session with mostly negative returns. The pan-European STOXX 600 index ended with losses, as technology stocks continued to decline, following the results of their US peers. Additionally, among banks HSBC falls by 5.5%, after warning that a share buyback for this year was unlikely because a key measure, which represents its capital strength, came in with low estimates. The UK market, reflected in the FTSE 100, closed with slightly positive returns, in a context where the UK Prime Minister held a productive discussion with his cabinet to find new ways to attack the cost of living crisis. This as consumers were hit by the jump in electricity and natural gas prices. The DAX index closed in negative territory, in a context where the foreign minister met with the US ambassador in Moscow, while Russia expelled German diplomats. Also, attacks on Azovstal, a steel plant, increased the tension between Russia and Ukraine. The French market fell this session, despite the fact that Emmanuel Macron's victory is set to offer relief for investors. On the other hand, restrictions on cities in China and concerns about their growth, generate pessimism in the European market. Thus, FTSE 100 +0.08%; CAC 40 -0.54%; DAX -1.20%; STOXX 600 -0.90% ended mostly in negative levels.

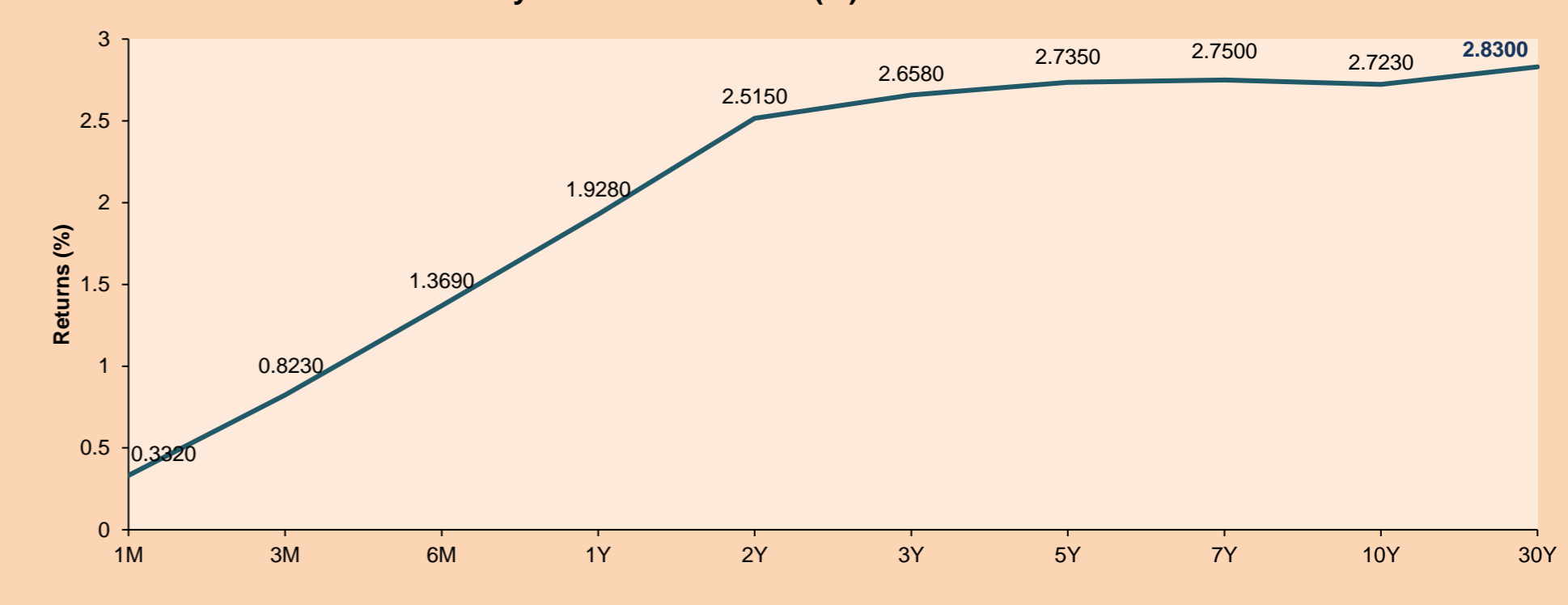
Asia:

The main Asian indices closed with mixed performances. The Chinese market posted negative returns on the CSI 300 index and SHANGHAI COMPOSITE, due to the resurgence of COVID-19 in the country and the increase of new cases of the virus in Beijing; which affected investors' growth expectations for the second largest economy. The Chinese central bank has announced prudent monetary policies to support the real economy, especially small businesses affected by the virus, by injecting liquidity and stability in the financial markets. In contrast, the HANG SENG index posted gains due to the good performance of technology and industrial companies, although they were limited by losses in the financial and energy sectors, amid concerns about COVID-19. The South Korean market closed with positive returns, boosted by Wall Street's overnight growth and better-than-projected results for Korean economic growth, in a context in which the index was also boosted by automotive companies. The Australian market closed with negative returns due to losses in mining and energy stocks caused by the fall in commodity prices, in a context of closures due to COVID in Shanghai and possible restrictions in Beijing. Finally, the Japanese NIKKEI had slightly positive performances, boosted by the dynamics of Wall Street overnight, although limited by the Chinese context. Thus, NIKKEI +0.41%; HANG SENG +0.33%; CSI 300 -0.81%; SHANGHAI COMP. -1.44%; S&P/ASX 200 -2.08%; KOSPI +0.42% ended with mixed performances.

ETFs

	Curr.	Close	1D	5D	30 D	YTD	Exchange
SPDR S&P 500 ETF TRUST	USD	416.10	-2.90%	-6.50%	-8.08%	-12.39%	NYSE Arca
ISHARES MSCI EMERGING MARKET	USD	41.15	-2.19%	-6.18%	-8.66%	-15.76%	NYSE Arca
ISHARES IBOXX HIGH YLD CORP	USD	79.46	-0.59%	-0.72%	-2.29%	-8.68%	NYSE Arca
FINANCIAL SELECT SECTOR SPDR	USD	35.32	-2.51%	-6.11%	-10.63%	-9.55%	NYSE Arca
VANECK GOLD MINERS ETF	USD	34.90	-2.16%	-12.09%	-9.87%	8.96%	NYSE Arca
ISHARES RUSSELL 2000 ETF	USD	187.74	-3.15%	-6.86%	-8.92%	-15.60%	NYSE Arca
SPDR GOLD SHARES	USD	177.32	0.15%	-2.47%	-2.77%	3.72%	NYSE Arca
ISHARES 20+ YEAR TREASURY BO	USD	122.41	1.01%	2.65%	-4.86%	-17.40%	NASDAQ GM
INVESTCO QQQ TRUST SERIES 1	USD	317.14	-3.77%	-8.41%	-11.75%	-20.29%	NASDAQ GM
ISHARES BIOTECHNOLOGY ETF	USD	119.39	-3.86%	-6.96%	-6.84%	-21.77%	NASDAQ GM
ENERGY SELECT SECTOR SPDR	USD	73.78	0.14%	-8.19%	-6.31%	32.94%	NYSE Arca
PROSHARES ULTRA VIX ST FUTUR	USD	17.23	16.03%	42.04%	26.78%	38.62%	Choe BZX
UNITED STATES OIL FUND LP	USD	76.46	2.42%	-0.52%	-5.30%	40.65%	NYSE Arca
ISHARES MSCI BRAZIL ETF	USD	32.58	-4.43%	-12.37%	-13.56%	16.07%	NYSE Arca
SPDR S&P OIL & GAS EXP & PR	USD	129.24	-1.11%	-9.86%	-6.75%	34.81%	NYSE Arca
UTILITIES SELECT SECTOR SPDR	USD	73.00	-1.00%	-4.16%	0.30%	1.98%	NYSE Arca
ISHARES US REAL ESTATE ETF	USD	107.41	-1.63%	-2.69%	1.45%	-7.52%	NYSE Arca
SPDR S&P BIOTECH ETF	USD	76.69	-5.98%	-9.35%	-14.43%	-31.50%	NYSE Arca
ISHARES IBOXX INVESTMENT GRA	USD	114.62	-0.05%	0.91%	-3.90%	-13.51%	NYSE Arca
ISHARES JP MORGAN USD EMERGI	USD	92.53	-0.69%	-0.81%	-3.52%	-15.16%	NASDAQ GM
REAL ESTATE SELECT SECT SPDR	USD	48.37	-1.57%	-2.60%	2.63%	-6.64%	NYSE Arca
ISHARES CHINA LARGE-CAP ETF	USD	28.56	-2.12%	-7.99%	-11.08%	-21.92%	NYSE Arca
CONSUMER STAPLES SPDR	USD	78.36	-1.55%	-1.28%	4.42%	1.62%	NYSE Arca
VANECK JUNIOR GOLD MINERS	USD	42.67	-2.78%	-13.48%	-11.58%	1.76%	NYSE Arca
SPDR BLOOMBERG HIGH YIELD BO	USD	98.87	-0.57%	-0.86%	-2.43%	-8.93%	NYSE Arca
VANGUARD REAL ESTATE ETF	USD	107.68	-1.64%	-2.69%	1.36%	-7.18%	NYSE Arca
GRAYSCALE BITCOIN TRUST BTC	USD	26.90	-6.01%	-10.87%	-10.84%	-21.46%	OTC US

USA Treasury Bonds Yield Curve (%)



Source: Bloomberg

LIMA

Stocks

Ticker	Currency	Price	1D*	5D*	30D*	YTD*	Frequency	Volume (US\$)	Beta	Dividend Yield (%)	Price Earning	Market Cap. (M US\$)	Economic Sector*	Index Weight
▼ ALICORC1 PE**	S/.	5.02	-0.80%	-3.99%	-6.24%	1.00%	100.00%	1,663,443	0.90	16.63	12.00	1,119.41	Industrial	3.53%
▼ ATACOB1 PE**	S/.	0.11	-8.33%	-15.38%	-15.38%	-8.33%	50.00%	24,446	1.01	0.00	-	27.16	Mining	1.02%
▼ BACKUS1 PE**	S/.	23.50	-2.08%	2.17%	0.43%	14.63%	100.00%	10,360	0.76	13.26	7.95	7,817.88	Industrial	0.82%
▼ BAP PE**	US\$	136.65	-2.24%	-5.88%	-22.55%	10.40%	100.00%	1,292,175	1.34	0.89	-	12,897.34	Diverse	5.82%
▼ BVN PE**	US\$	8.82	-0.90%	-14.95%	-17.42%	20.82%	100.00%	234,826	1.29	0.79	-	2,426.93	Mining	5.88%
▼ CASAGRC1 PE**	S/.	7.40	-6.21%	-22.92%	-29.52%	-18.68%	94.44%	70,652	1.09	72.99	4.46	162.91	Agricultural	1.31%
▼ BBVAC1 PE**	S/.	1.74	-2.79%	-13.00%	-20.91%	-3.87%	100.00%	274,205	0.80	6.63	7.57	3,073.40	Finance	2.85%
▼ CORARE1 PE**	S/.	1.43	-5.30%	-20.11%	-22.28%	-16.86%	94.44%	186,404	0.75	17.94	2.17	622.03	Industrial	1.72%
▼ CPACASC1 PE**	S/.	4.20	-1.18%	-6.67%	-13.04%	-15.15%	100.00%	147,048	0.64	18.81	11.67	508.01	Industrial	2.38%
▼ CVERDEC1 PE**	US\$	39.78	-0.55%	-6.49%	-14.45%	6.85%	94.44%	696,370	0.98	4.67	11.69	13,925.23	Mining	5.25%
▲ ENGEPEC1 PE**	S/.	2.05	2.50%	-2.38%	-12.77%	-0.97%	94.44%	3,338	0.73	14.26	8.20	1,283.46	Public Services	1.44%
- ENDISPC1**	S/.	3.94	0.00%	-12.44%	-12.44%	-1.50%	61.11%	19,716	0.85	9.59	7.64	657.54	Public Services	0.98%
▲ FERREYC1 PE**	S/.	2.27	5.58%	-3.81%	-9.20%	10.73%	100.00%	646,304	0.96	10.51	5.11	578.84	Diverse	4.90%
▲ AENZAC1 PE**	S/.	1.35	3.85%	3.05%	8.00%	-1.46%	94.44%	148,350	0.91	0.00	-	307.63	Diverse	4.05%
- IFS PE**	US\$	30.20	0.00%	-5.48%	-11.82%	12.48%	100.00%	63,052	1.09	4.70	7.45	3,485.62	Diverse	7.22%
▼ INRETC1 PE**	US\$	36.40	-0.16%	-0.27%	-1.62%	4.15%	100.00%	355,829	0.67	3.74	41.29	3,742.19	Diverse	5.28%
- LUSURC1 PE**	S/.	16.65	0.00%	-1.42%	-2.06%	16.92%	50.00%	130	0.00	0.00	14.02	2,118.95	Public Services	1.81%
▲ MINSUR1 PE**	S/.	5.45	1.68%	-6.03%	-13.22%	37.97%	100.00%	719,909	1.03	12.62	2.49	4,106.41	Mining	3.09%
- PML PE**	US\$	0.13	0.00%	0.00%	-13.33%	8.33%	55.56%	16,502	1.10	0.00	-	34.37	Mining	2.12%
▼ SCCO PE**	US\$	62.36	-3.47%	-14.14%	-19.35%	0.94%	94.44%	155,913	1.12	5.77	13.73	48,209.90	Industrial	2.12%
▲ SIDERC1 PE**	S/.	1.50	2.74%	0.67%	-6.25%	-6.25%	100.00%	11,033	0.81	41.79	3.25	274.42	Mining	2.14%
▼ TV PE**	US\$	0.81	-3.57%	-26.36%	-30.17%	-37.69%	100.00%	30,608	1.11	0.00	-	80.15	Industrial	1.43%
▼ UNACEMC1 PE**	S/.	1.77	-0.56%	-5.35%	-18.43%	-26.25%	100.00%	268,067	1.06	5.65	-	841.04	Mining	2.93%
- VOLCABC1 PE**	S/.	0.80	0.00%	-8.05%	-9.09%	33.33%	100.00%	1,073,707	0.87	0.00	21.99	1,748.80	Industrial	3.00%
- BROCALC1 PE**	S/.	7.40	0.00%	-6.33%	-7.50%	42.31%	55.56%	8,043	0.00	1.16	54.33	288.00	Mining	5.90%
- RIMSEGC1 PE**	S/.	0.85	0.00%	0.00%	0.00%	-1.16%	16.67%	239	0.00	0.00	16.13	366.94	Finance	3.09%
▼ CORAREC1 PE**	US\$	2.25	-8.91%	-8.91%	-2.17%	18.42%	55.56%	22,500	0.00	11.40	3.41	2,380.06	Mining	2.12%
- ENGIEC1 PE**	S/.	6.17	0.00%	-4.04%	-5.08%	5.29%	44.44%	15,415	0.50	0.00	14.82	969.72	Diversas	2.12%
- GBVLAC1 PE**	S/.	2.52	0.00%	0.00%	-1.18%	-7.35%	38.89%	1,000	0.00	4.00	26.19	119.93	Diversas	2.14%

Quantity of shares: 29
 Source: Bloomberg, Economática
 * Bloomberg Industry Classification System
 ** PER is used in the stock market and original currency of the instrument
 *Legend: Variation 1D: 1 Day; 5D: 5 Days; 1M: 1 Month; YTD: Var.% 12/31/21 to date

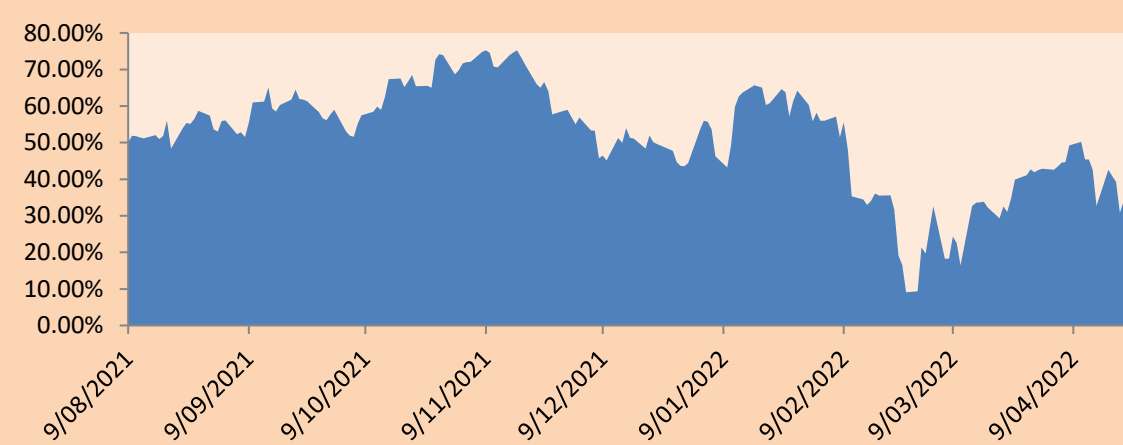
Sectorial Indices

	Close	1D*	5D*	30D*	YTD*	Beta
▼ S&P/BVLMining	430.12	-1.75%	-10.32%	-15.80%	4.50%	1.12
▲ S&P/BVLConsumer	1,136.70	-0.11%	2.07%	-3.17%	-0.98%	0.56
▲ S&P/BVLIndustrials	249.44	0.67%	-4.61%	-7.85%	-3.34%	0.64
▼ S&P/BVLFinancials	958.05	-1.50%	-2.91%	-19.34%	5.73%	1.40
▼ S&P/BVLConstruction	253.47	-1.37%	-4.96%	-9.48%	-10.55%	0.54
▲ S&P/BVLPublicSvcs	571.15	0.74%	-5.05%	-7.02%	4.13%	0.05
▲ S&P/BVLElectricUtil	557.59	0.74%	-5.04%	-7.02%	4.13%	0.05

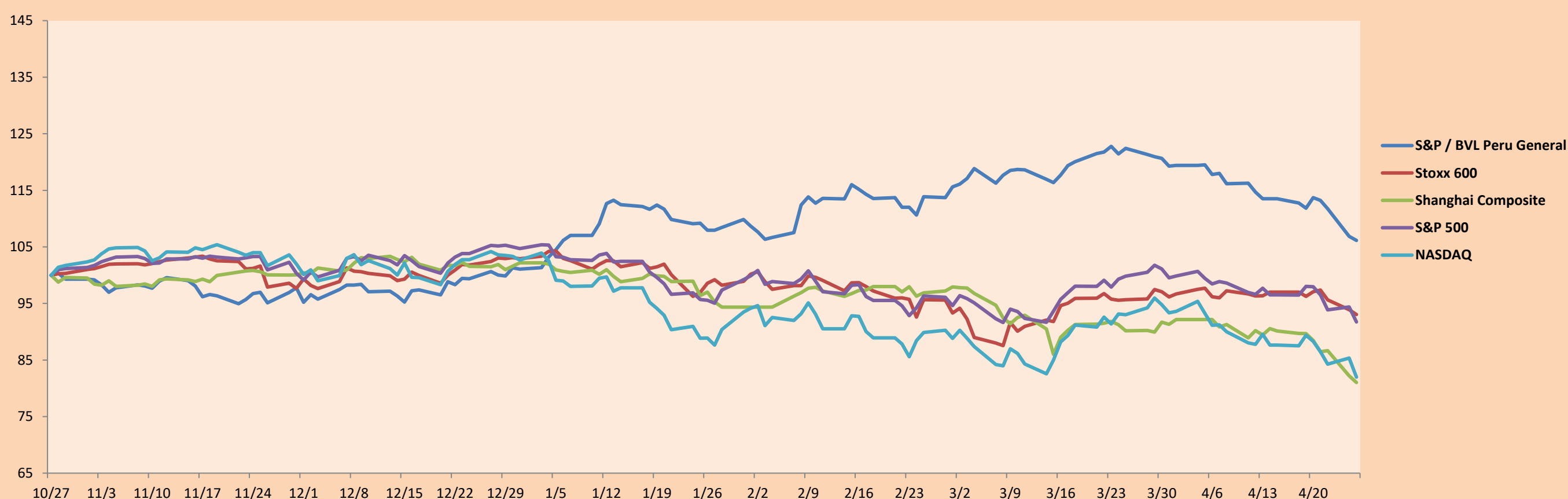
S&P/BVLConstructionTRPEN

*Legend: Variation 1D: 1 Day; 5D: 5 Days; 1M: 1 Month; YTD: Var.% 12/31/21 to date

Correlation Graph of Returns of Mining Index against Metallic Index of London (3 months)



Indices (6 months)



Base: 27/10/21=100
 Source: Bloomberg

Capital Market Laboratory Coordinator: MS Javier Penny Pestana
 Collaboration: Sebastian Ore, Fabrizio Lavalle, Miguel Solimano y Jhonatan Cueva
 email: pulsobursatil@ulima.edu.pe
 facebook: www.facebook.com/pulsobursatil.ul

SOVEREIGN RATING

RISK RATINGS

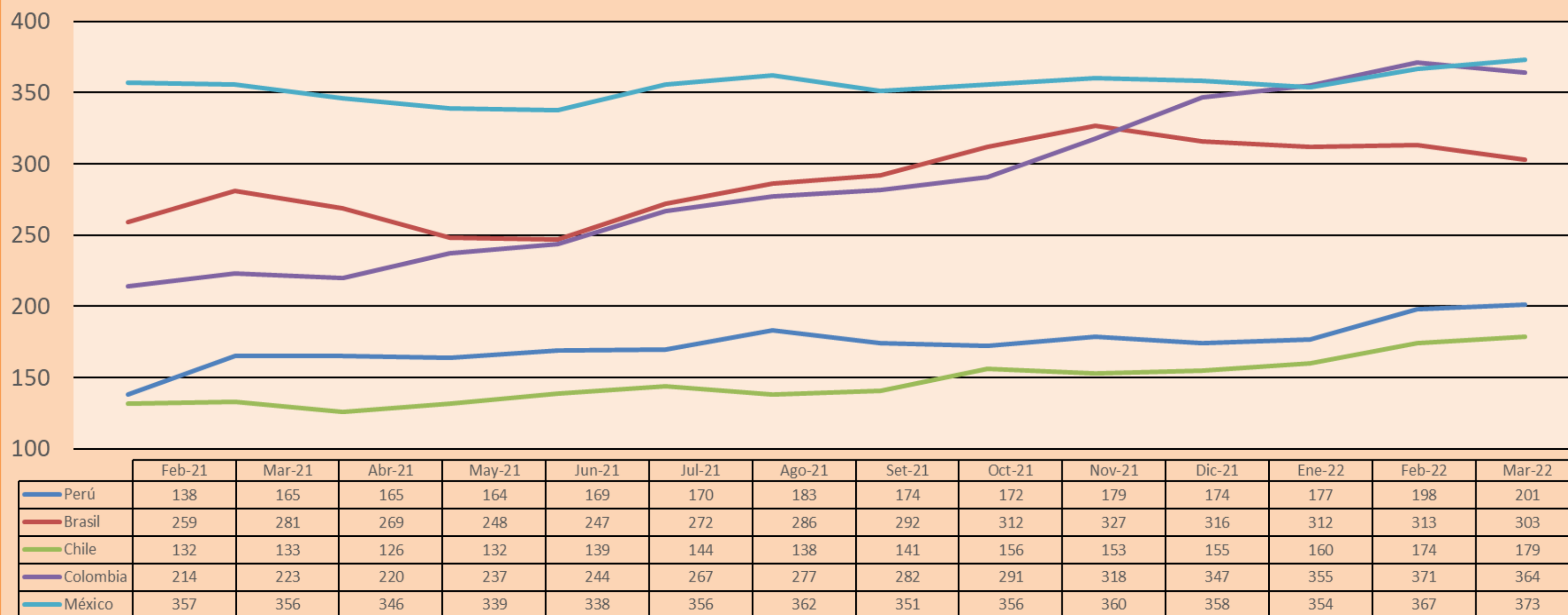
Moody's	S&P	Fitch	
Aaa	AAA	AAA	Prime
Aa1	AA+	AA+	High credit quality
Aa2	AA	AA	
Aa3	AA-	AA-	
A1	A+	A+	Medium-high grade, with low credit risk
A2	A	A	
A3	A-	A-	
Baa1	BBB+	BBB+	Moderate Credit Risk
Baa2	BBB	BBB	
Baa3	BBB-	BBB-	
Ba1	BB+	BB+	It has speculative elements and it is subject to substantial credit risk
Ba2	BB	BB	
Ba3	BB-	BB-	
B1	B+	B+	It is considered speculative and it has high credit risk
B2	B	B	
B3	B-	B-	
Caa1	CCC+	CCC	Bad credit conditions and it is subject to high credit risk
Caa2	CCC		
Caa3	CCC-		
Ca	CC	DDD	Very close to default or in default
	C		
C	D		

Source: Bloomberg

Latin America Credit Rating			
Clasificadora de riesgo			
Country	Moody's	Fitch	S&P
Peru	Baa1	BBB	BBB
México	Ba2	BB-	BB-
Venezuela	C	WD	NR
Brazil	Ba2	BB-	BB-
Colombia	Baa2	BB+	BB+
Chile	A1	A-	A
Argentine	Ca	WD	CCC+
Panama	Baa2	BBB-	BBB

Source: Bloomberg

LATAM Country Risk(bps)



Source: BCRP

Capital Market Laboratory Coordinator: MS Javier Penny Pestana
Collaboration: Sebastian Ore, Fabrizio Lavalle, Miguel Solimano y Jhonatan Cueva
email: pulsobursatil@ulima.edu.pe
facebook: www.facebook.com/pulsobursatil.ul