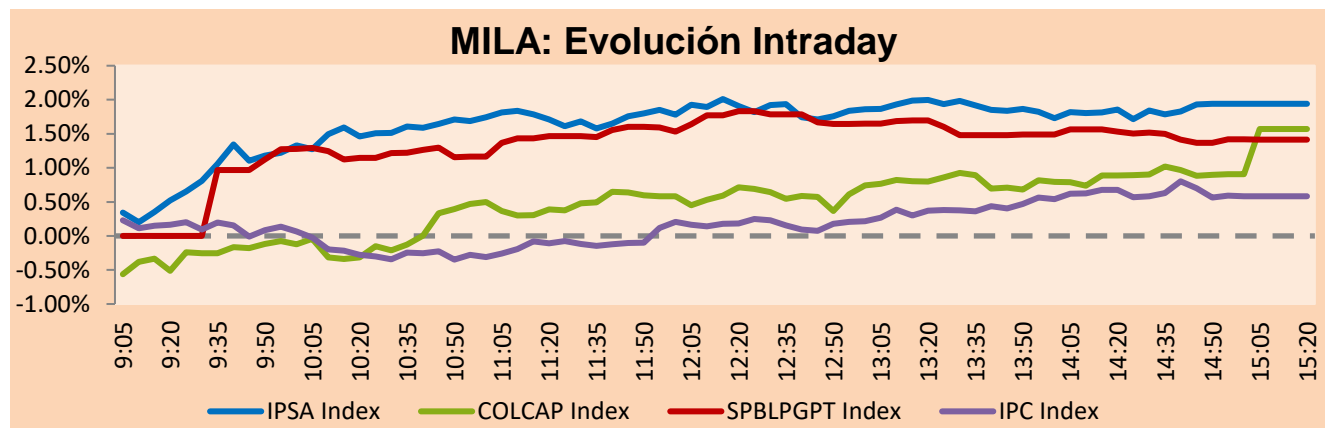


MILA

Lima, May 27, 2022

Main Indexes	Close	1 D	5 D	1 M	YTD	Cap. Burs. (US\$ bill)
▲ IPSA (Chile)	5,387.06	2.24%	8.11%	12.81%	25.04%	112.90
▲ IGPA (Chile)	28,595.47	2.71%	9.22%	17.44%	32.59%	130.20
▼ COLSC (Colombia)	918.90	-0.55%	0.15%	-6.72%	-5.57%	6.15
▲ COLCAP (Colombia)	1,532.31	1.57%	5.01%	-3.40%	8.60%	82.15
▲ S&P/BVL (Perú)*	20,859.88	1.41%	2.76%	-7.14%	-1.19%	95.48
▲ S&P/BVL SEL (Perú)	544.00	1.55%	2.75%	-8.58%	-3.47%	86.29
▲ S&P/BVL LIMA 25	28,944.01	1.11%	2.56%	-11.90%	-4.39%	94.65
▲ IPC (México)	52,463.55	0.61%	1.83%	0.21%	-1.52%	336.14
▲ S&P MILA 40	523.32	1.77%	7.18%	3.30%	17.64%	6,581.33

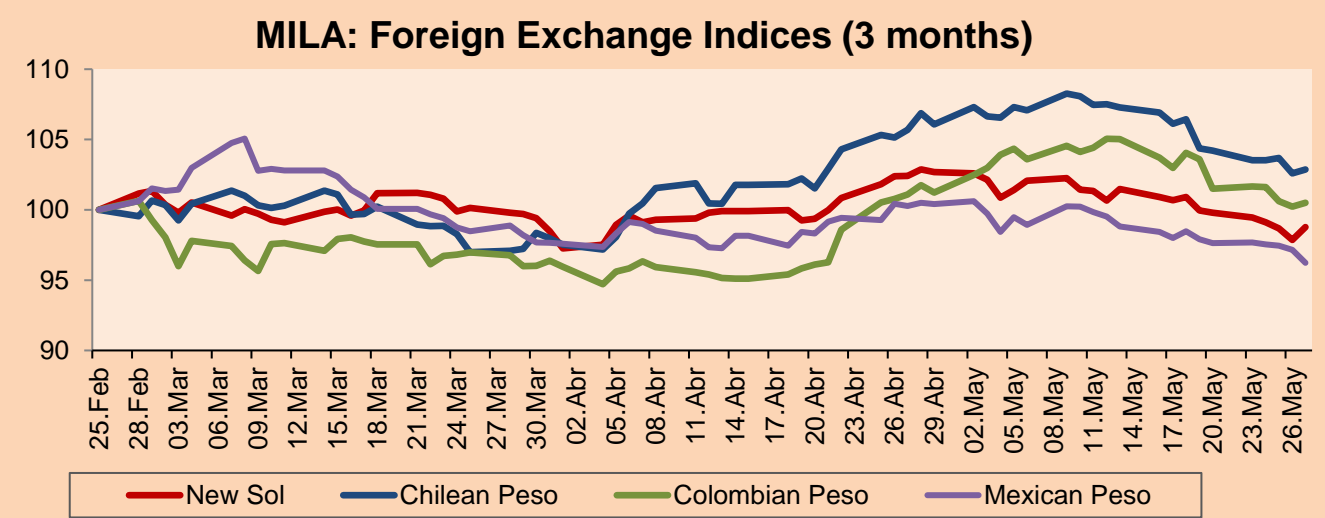
*Legend: Variation 1D: 1 day; 5D: 5 days; 1M: 1 Month; YTD: Var% 12/31/21 to date



Source: Bloomberg

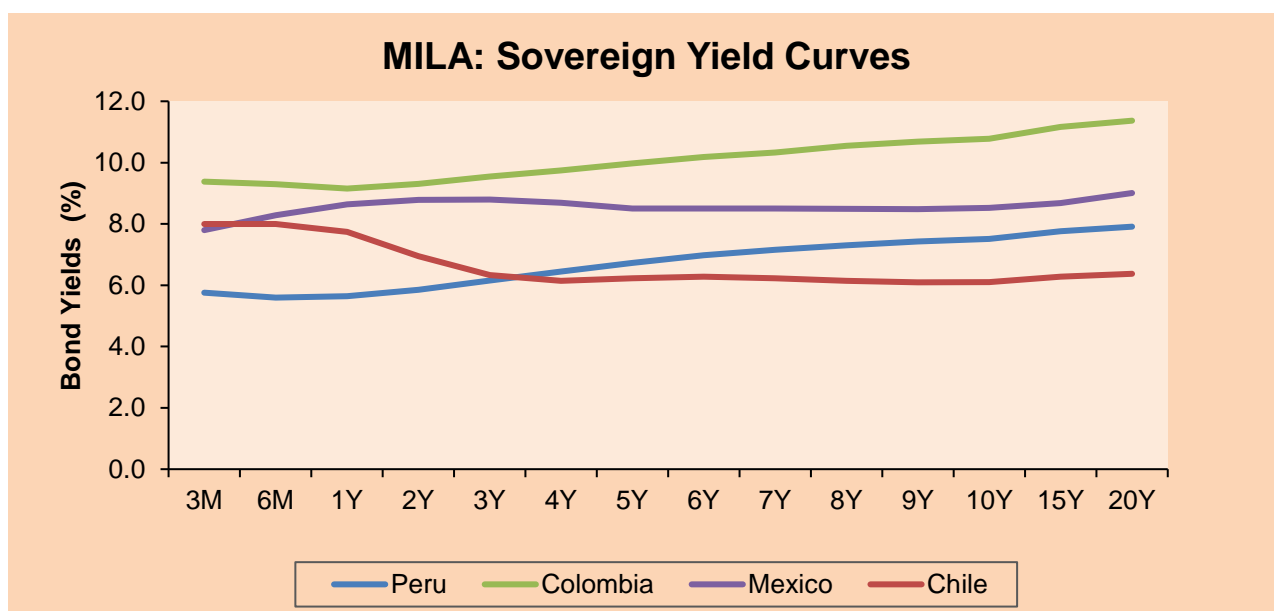
Currency	Price	1D*	5D*	30 D*	YTD*
▲ Sol (PEN)	3,691.2	0.92%	-1.04%	-3.57%	-7.70%
▲ Chilean Peso (CLP)	825.30	0.27%	-1.29%	-2.66%	-3.13%
▲ Colombian Peso (COP)	3,932.59	0.27%	-0.99%	-0.58%	-3.62%
▼ Mexican Peso (MXN)	19.58	-0.95%	-1.43%	-4.03%	-4.63%

*Legend: Variation 1D: 1 day; 5D: 5 days; 1M: 1 Month; YTD: Var% 12/31/21 to date



Base: 25/02/22=100
Source: Bloomberg

Fixed Income	Currency	Price	Bid Yield (%)	Ask Yield (%)	Duration
PERU 7.35 07/21/25	USD	110.14	3.97	3.80	2.76
PERU 4.125 08/25/27	USD	100.583	4.05	3.95	4.63
PERU 8.75 11/21/33	USD	133.191	4.96	4.89	7.84
PERU 6.55 03/14/37	USD	116.047	5.03	4.97	9.33
PERU 5.625 11/18/2050	USD	112.054	4.85	4.83	14.79
CHILE 2.25 10/30/22	USD	100.271	2.05	1.13	0.41
CHILE 3.125 01/21/26	USD	98.884	3.49	3.41	3.39
CHILE 3.625 10/30/42	USD	85.522	4.78	4.70	13.87
COLOM 11.85 03/09/28	USD	141.907	3.81	3.62	4.44
COLOM 10.375 01/28/33	USD	130.863	6.46	6.23	6.82
COLOM 7.375 09/18/37	USD	104.09	6.99	6.88	9.14
COLOM 6.125 01/18/41	USD	90.341	7.10	7.03	10.42
MEX 4 10/02/23	USD	90.341	7.1	7.029	10.42
MEX5.55 01/45	USD	99.638	5.60	5.56	12.59



Source: Bloomberg

Equity

Largest gains	Exchange	Currency	Price	▲%	Largest losses	Exchange	Currency	Price	▼%
GRUPO NUTRESA SA	Colombia	COP	40590.00	7.78	PROMOTORA Y OPEF	Mexico	MXN	137.37	-4.70
SOQUIMICH-B	Chile	CLP	93250.00	5.63	SURAMERICANA	Colombia	COP	40500	-3.57
COLBUN SA	Chile	CLP	61.89	4.46	GRUPO ENERGIA BO	Colombia	COP	2280	-2.98
ENGIE ENERGIA CH	Chile	CLP	386.15	4.36	GRUPO F BANORT-O	Mexico	MXN	131.02	-2.41
GRUPO MEXICO-B	Mexico	MXN	101.95	3.72	GRUMA SAB-B	Mexico	MXN	238.27	-1.37

Per Turnover	Exchange	Amount (US\$)	Per Volume	Exchange	Volume
AMERICA MOVIL-L	Mexico	68,709,223	ITAU CORPBANCA	Chile	2,618,550,374
WALMART DE MEXIC	Mexico	59,639,459	ENEL CHILE SA	Chile	217,489,180
GRUPO F BANORT-O	Mexico	47,338,211	BANCO DE CHILE	Chile	149,895,798
SOQUIMICH-B	Chile	37,401,091	BANCO SANTANDER	Chile	120,041,110
GRUPO MEXICO-B	Mexico	22,625,633	AMERICA MOVIL-L	Mexico	60,907,009

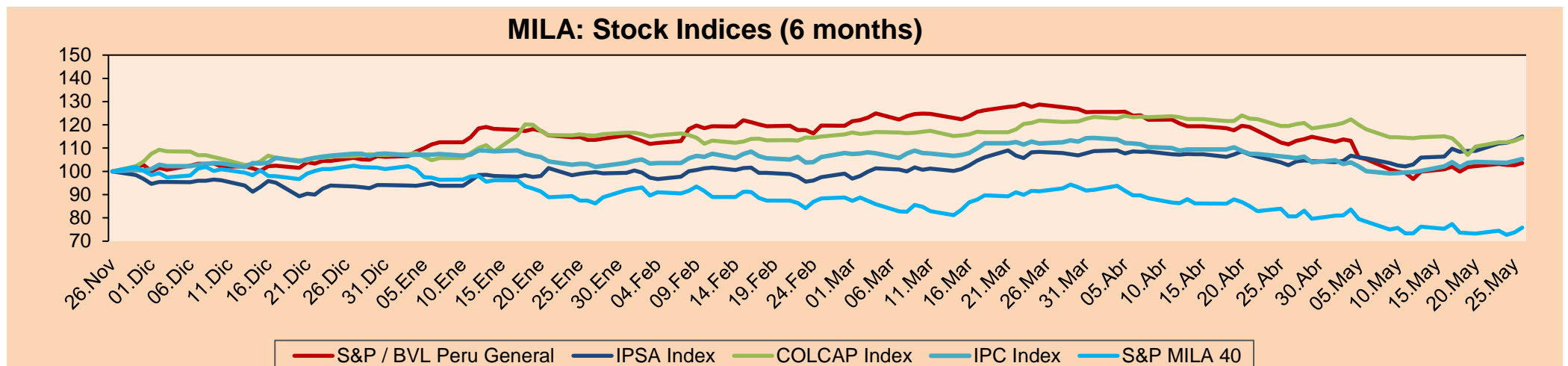
MILA

Peru: The BVL General index ended today's session with a positive result of +1.41%. The index maintains a negative annual cumulative trend of -1.19% in local currency, while the dollar-adjusted performance amounted to +7.05%. Next, the S&P/BVL Peru SEL varied by +1.55% while the S&P/BVL LIMA 25 by +1.11%. The spot PEN reached S/.3.6912. Headline: Exchange rate closes the week higher, up 0.92% with respect to the previous day.

Chile: The IPSA index ended the day with a positive return of +2.24%. The most benefited sectors of the day were materials (+5.08%) and communication services (+3.14%). The best performing stocks were Sociedad Química y Minera (+5.63%) and Colbún SA (+4.46%). Headline: IPSA closes up 2.2% to new high since February 2019, encouraged by global stock market rally.

Colombia: The COLCAP index ended the session with a positive return of +1.57%. The most benefited sectors of the day were Consumer Staples (+7.78%) and Financials (+2.28%). The best performing stocks were Grupo Nutresa SA (+7.78%) and BanColombia SA (+4.67%). Headline: Colombia records record in housing subsidies.

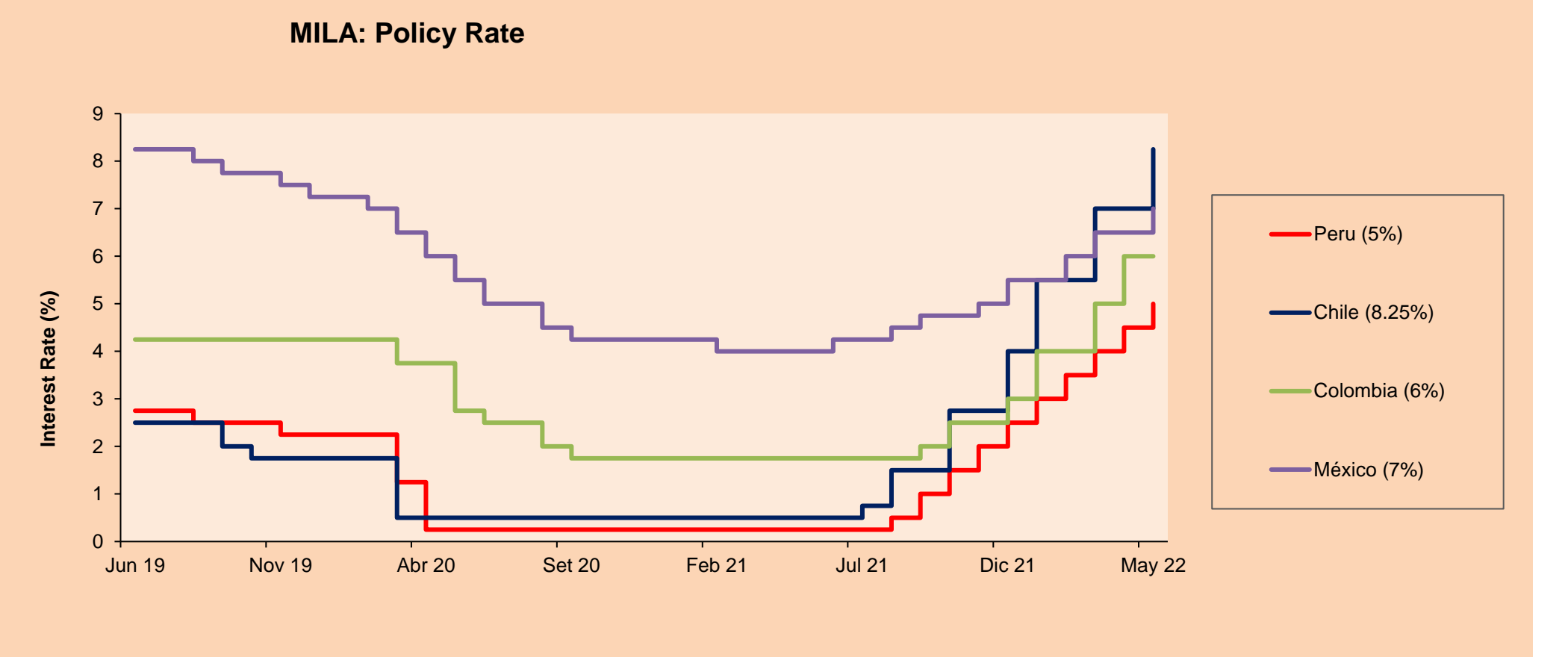
Mexico: The IPC index closed the day in positive territory, +0.61%. The best performing sectors of the day were Materials (+2.98%) and Real Estate (+2.93%). The best performing stocks were Grupo Mexico SAB de CV (+3.72%) and Grupo Aeroportuario del Sureste (+3.58%). Headline: Treasury maintains the 100% fiscal stimulus for all gasoline.



Base: 29/11/21=100
Source: Bloomberg

ETFs

ETFs	Curr.	Close	1D	5D	30 D	YTD	Exchange
▲ iShares MSCI All Peru Caped Index Fund	USD	31.24	1.36%	4.94%	-1.39%	5.47%	NYSE Arca
▲ iShares MSCI All Chile Caped Index Fund	USD	30.7	2.54%	9.41%	19.64%	32.96%	Cboe BZX
▲ Global X MSCI Colombia	USD	11.285	1.21%	6.17%	-1.87%	12.93%	NYSE Arca
▲ iShares MSCI Mexico Capped	USD	53.16	2.29%	4.01%	6.00%	5.06%	NYSE Arca
▲ iShares MSCI Emerging Markets	USD	42.05	1.15%	2.21%	1.01%	-13.92%	NYSE Arca
▲ Vanguard FTSE Emerging Markets	USD	43.04	1.08%	2.04%	0.44%	-12.98%	NYSE Arca
▲ iShares Core MSCI Emerging Markets	USD	51.87	1.13%	2.17%	0.80%	-13.35%	NYSE Arca
▲ iShares JP Morgan Emerging Markets Bonds	USD	57.69	0.66%	0.77%	-1.28%	-8.17%	Cboe BZX
▲ Morgan Stanley Emerging Markets Domestic	USD	4.69	0.43%	2.63%	1.74%	-14.42%	New York



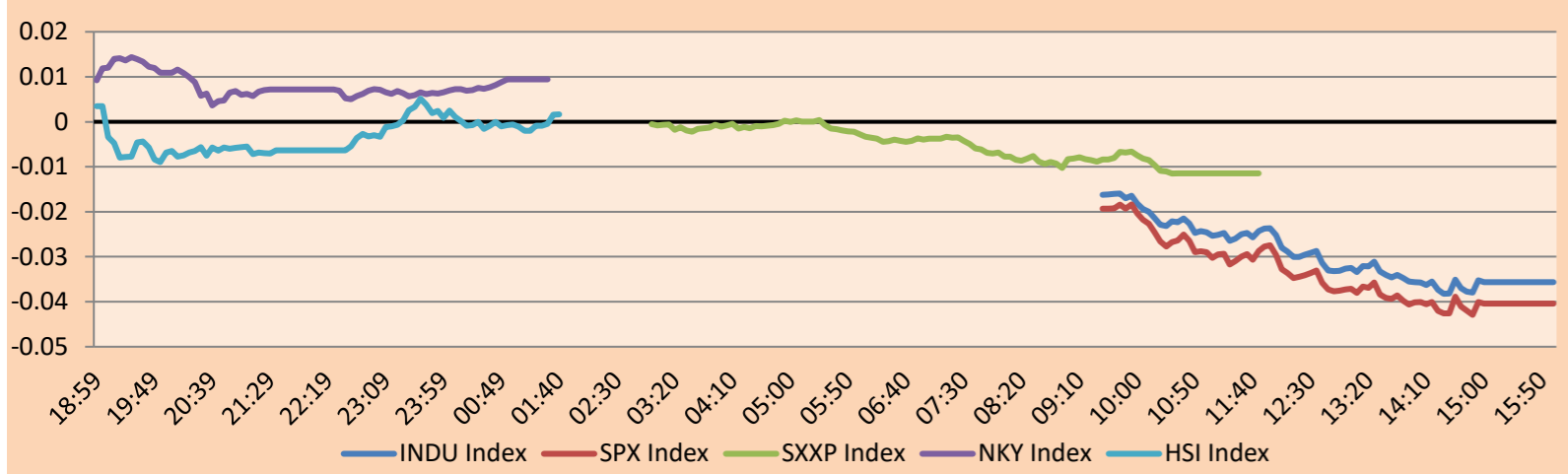
Source: Bloomberg

WORLD

Main Indices	Close	1 D*	5 D*	1 M*	YTD*	Market Cap. (US\$ Mill.)
▲ Dow Jones (USA)	33,212.96	1.76%	6.24%	-0.27%	-8.60%	10,136,887
▲ Standard & Poor's 500 (EEUU)	4,158.24	2.47%	6.58%	-0.61%	-12.76%	35,548,595
▲ NASDAQ Composite (USA)	12,131.13	3.33%	6.84%	-2.86%	-22.46%	20,034,285
▲ Stoxx EUROPE 600 (Europe)	443.93	1.42%	2.98%	-0.09%	-8.99%	11,392,699
▲ DAX (Germany)	14,462.19	1.62%	3.44%	4.84%	-8.96%	1,395,046
▲ FTSE 100 (United Kingdom)	7,585.46	0.27%	2.65%	2.15%	2.72%	1,653,810
▲ CAC 40 (France)	6,515.75	1.64%	3.67%	1.09%	-8.91%	1,940,469
▲ IBEX 35 (Spain)	8,933.60	0.50%	5.29%	5.38%	2.52%	548,523
▼ MSCI AC Asia Pacific Index	163.22	-0.02%	0.67%	-0.80%	-15.48%	21,613,282
▲ HANG SENG (Hong kong)	20,697.36	2.89%	-0.10%	-1.86%	-11.54%	3,262,612
▲ SHANGHAI SE Comp. (China)	3,130.24	0.23%	-0.52%	2.73%	-14.00%	6,286,496
▲ NIKKEI 225 (Japan)	26,781.68	0.66%	0.16%	-0.25%	-6.98%	3,612,319
▲ S&P / ASX 200 (Australia)	7,182.71	1.08%	0.52%	-3.39%	-3.52%	1,689,769
▲ KOSPI (South Korea)	2,638.05	0.98%	-0.05%	-2.11%	-11.40%	1,595,990

*Legend: Variation 1D: 1 Day; 5D: 5 Days; 1M: 1 Month; YTD: Var.% 12/31/21 to date

Mercado Evolución Intraday (var %)

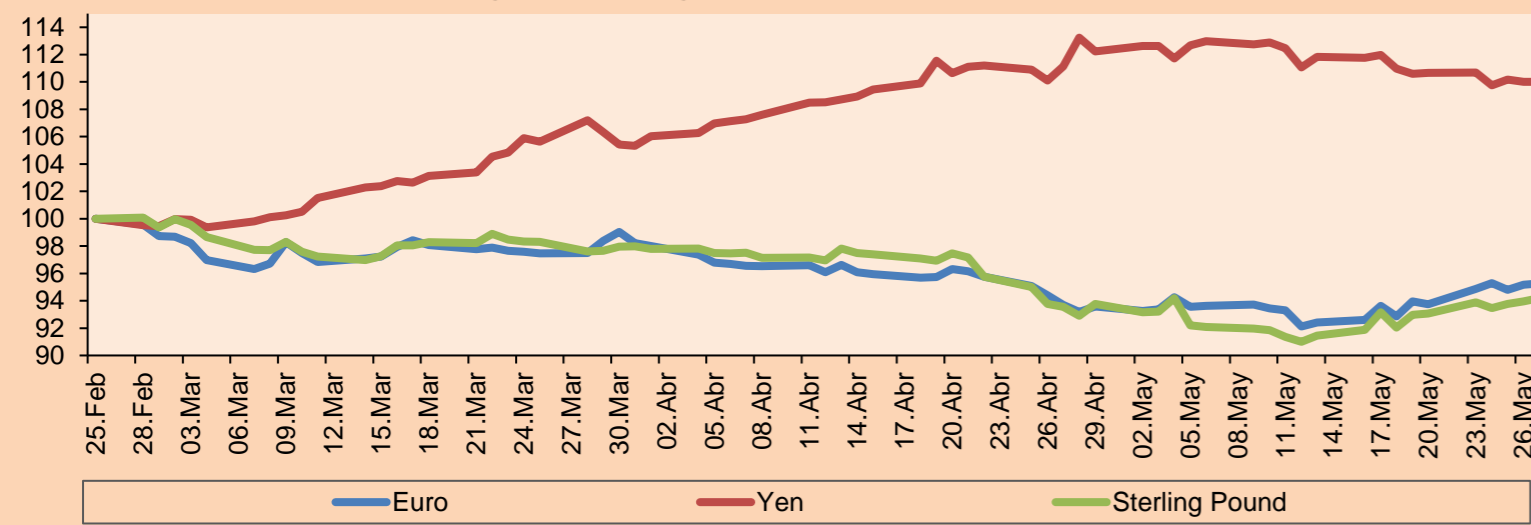


Source: Bloomberg

Currency	Price	1 D*	5 D*	1 M*	YTD*
▲ Euro	1.0735	0.09%	1.62%	1.69%	-5.58%
▼ Yen	127.1100	-0.01%	-0.60%	-1.03%	10.45%
▲ Sterling Pound	1.2631	0.25%	1.21%	0.69%	-6.66%
▼ Yuan	6.6994	-0.59%	0.10%	2.12%	5.40%
▼ Hong Kong Dollar	7.8492	-0.01%	0.01%	0.04%	0.67%
▼ Brazilian Real	4.7306	-0.81%	-3.06%	-4.75%	-15.16%
▲ Argentine Peso	119.5540	0.11%	0.90%	3.94%	16.37%

*Legend: Variation 1D: 1 Day; 5D: 5 Days; 1M: 1 Month; YTD: Var.% 12/31/21 to date

Foreign Exchange Indices (3 months)

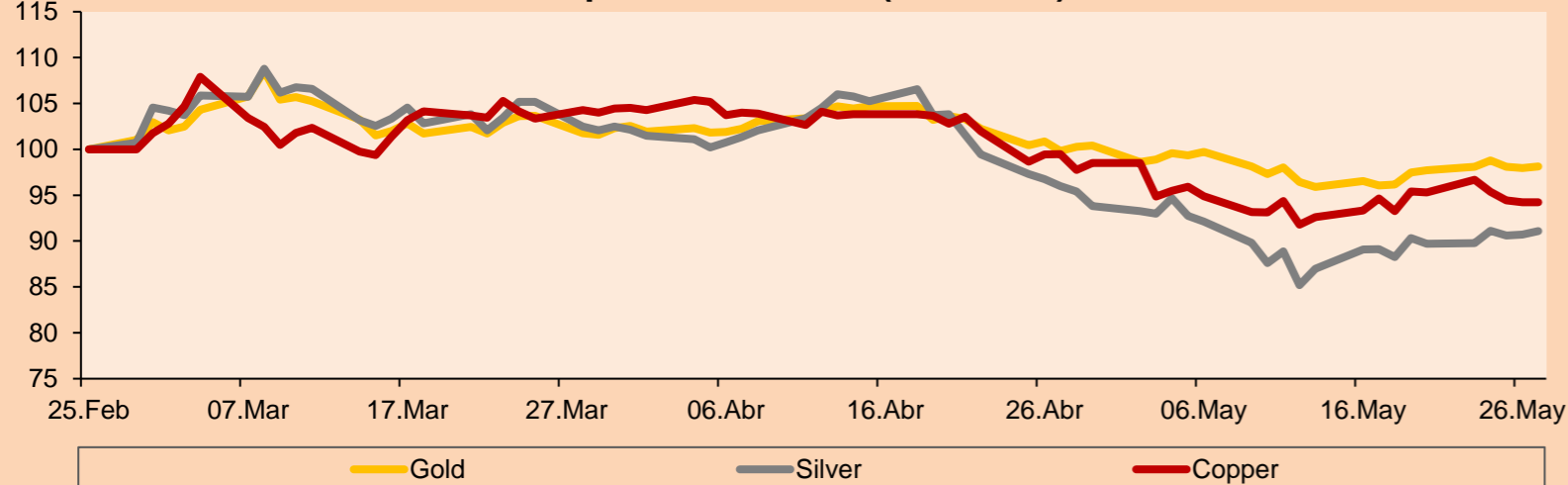


Base: 25/02/22=100
Source: Bloomberg

Commodities	Close	1 D*	5 D*	1 M*	YTD*
▲ Oro (US\$ Oz. T) (LME)	1,853.72	0.17%	0.39%	-1.72%	1.34%
▲ Plata (US\$ Oz. T) (LME)	22.11	0.45%	1.55%	-5.10%	-5.13%
- Cobre (US\$ TM) (LME)	9,345.50	0.00%	-1.12%	-5.28%	-4.06%
- Zinc (US\$ TM) (LME)	3,745.00	0.00%	0.51%	-12.46%	4.32%
▲ Petróleo WTI (US\$ Barril) (NYM)	115.07	0.86%	4.34%	14.29%	58.11%
- Estaño (US\$ TM) (LME)	33,888.00	0.00%	-3.02%	-16.29%	-13.93%
- Plomo (US\$ TM) (LME)	2,115.50	0.00%	-3.25%	-7.15%	-9.51%
▲ Azúcar #11 (US\$ Libra) (NYB-ICE)	19.61	0.36%	-1.70%	3.76%	6.63%
▼ Cacao (US\$ TM) (NYB-ICE)	2,462.00	-0.08%	1.36%	-2.96%	-3.94%
▲ Café Arábica (US\$ TM) (NYB-ICE)	229.45	1.26%	6.30%	6.45%	1.86%

*Leyenda: Variación 1D: 1 Día; 5D: 5 Días; 1M: 1 Mes; YTD: Var.% 31/12/21 a la fecha

Principal Metals Index (3 months)



Base: 25/02/22=100
Source: Bloomberg

Equity

Germany (Stocks from DAX Index)

Largest gains	Curr.	Price	▲%	Exchange	Largest losses	Curr.	Price	▼%	Exchange
PUM GY	EUR	66.56	3.58	Xetra	HEN3 GY	EUR	61.66	-1.66	Xetra
LIN GY	EUR	305.75	3.03	Xetra	HFG GY	EUR	34.81	-0.23	Xetra
DHER GY	EUR	34.13	2.96	Xetra	DBK GY	EUR	10.392	-0.21	Xetra
AIR GY	EUR	112.02	2.64	Xetra	FME GY	EUR	56.58	-0.18	Xetra

Europe (Stocks from STOXX EUROPE 600)

Largest gains	Curr.	Price	▲%	Exchange	Largest losses	Curr.	Price	▼%	Exchange
NOD NO	NOK	178	9.54	Oslo	SDF GY	EUR	25.22	-5.68	Xetra
EVO SS	SEK	1017.4	9.52	Stockholm	DRX LN	GBp	656	-4.16	Londres
SINCH SS	SEK	46.845	9.41	Stockholm	ITV LN	GBp	70.64	-3.87	Londres
VITR SS	SEK	277.2	9.13	Stockholm	SALM NO	NOK	693	-3.82	Oslo

Global Overview:

United States:

The U.S. market closed with positive performances during a context marked by the release of encouraging macroeconomic data and better prospects for the Federal Reserve's monetary policy following the release of the FOMC minutes. Starting with the DOW JONES index, which closed higher after consumer spending beat expectations for April, suggesting solid demand and thus supporting the idea of GDP expansion this year, in addition, the core PCE inflation rate declined further strengthening expectations that the FED will not embark on interest rate hikes. Likewise, the S&P500 index ended the session with a positive result, driven by the increase in Ultra Beauty(+12.47%) and Autodesk Inc(+10.31%) shares, after both companies posted earnings per share of \$1.84 and \$1.43, respectively, beating the market's initial forecasts. Finally, the NASDAQ index closed with a significant gain, after AVDL(+133.64) was given a new price target of \$15 by Openheimer investment analysts, meaning a potential return of 434.98% thanks to good liquidity indicators. Thus, DOW JONES +1.76%; S&P 500 +2.47%; NASDAQ +3.33% finished with positive results.

Europe:

Major European indices ended the session with positive returns as gains in technology and retail stocks, along with encouraging U.S. April consumer spending data, reduced fears of slowing economic growth. The pan-European STOXX 600 index ended with gains as US consumer spending in April rose by 0.9% m-o-m, more than expected. In addition, US core inflation fell to 4.9%, implying that the peak of the inflation wave has passed. The British market, reflected in the FTSE 100, finished higher, following Wall Street's rise, after the Fed minutes suggested that rapid interest rate hikes may be paused at the end of the year. Meanwhile, the DAX index closed in positive territory as the Fed minutes released Wednesday night hinted at a pause in interest rates. After two further rate hikes in June and July, the Fed will likely decide how to proceed. The French market rallied this session, continuing its recovery, as investors were comforted by the Fed minutes, which suggest that a pause in the Fed's rate hikes is possible in the coming months. Thus, FTSE 100 +0.27%; CAC 40 +1.64%; DAX +1.62%; STOXX 600 +1.42% ended at positive levels.

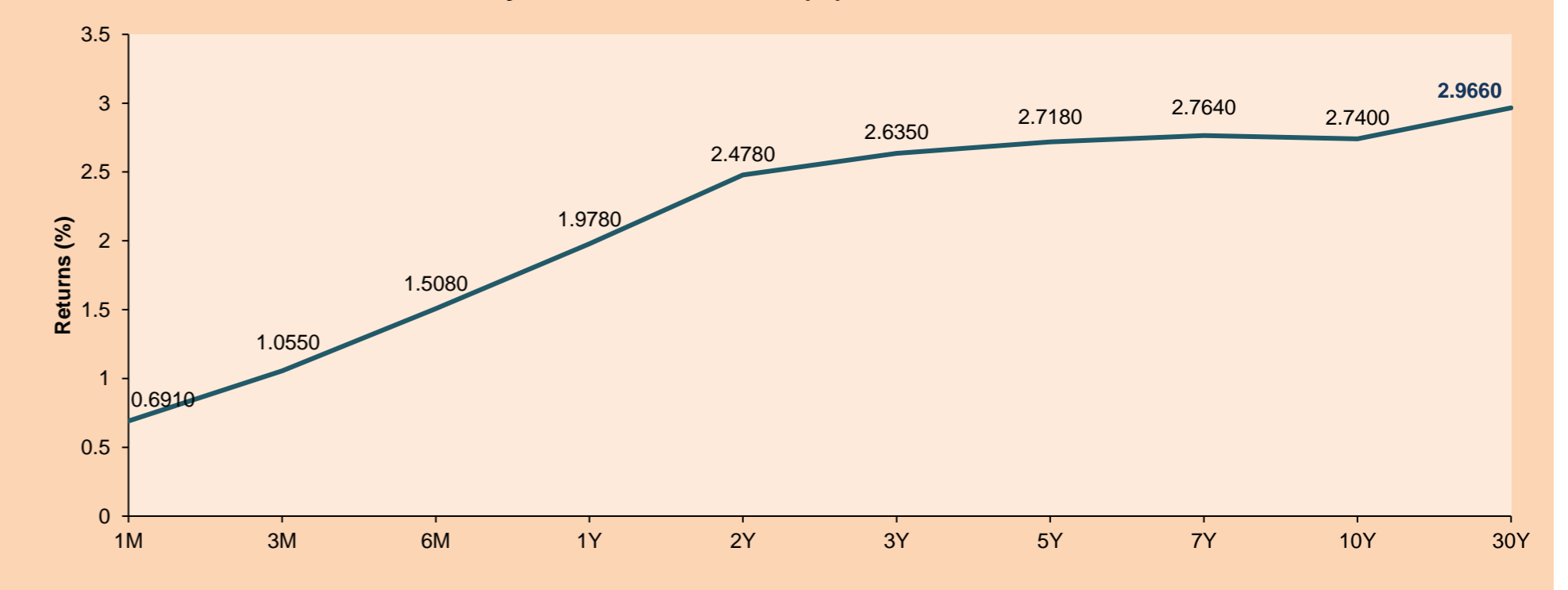
Asia:

The main Asian indexes closed with mostly positive performances. The Chinese market closed in positive territory, where copper and other metals rose and stabilized, after the world's largest consumer of industrial metals, China, announced several policies to boost the economy. Likewise, it opened the foreign exchange market for bond traders in its latest move to attract more capital inflows. South Korea's KOSPI rose this session on higher expectations that Beijing may implement further measures to revive economic growth; also, U.S. Secretary Antony Blinken mentioned that he is not looking to block China's growth, which was interpreted by investors as positive. The Japanese market closed in positive territory, in a context where the cost of living in Tokyo increased at the same pace as the previous month, underlining the lower price momentum in the country compared to its global counterparts, which supports the Bank of Japan's stimulus stance; this inflationary data being 2.4%. The Australian market ended higher, despite the country's households struggling with escalating fuel and food prices, where they will soon find electricity bills will put much more pressure on the budget. Thus, NIKKEI +0.66%; HANG SENG +2.89%; CSI 300 +0.21%; S&P/ASX 200 +1.08%; KOSPI +0.98%, SHANGAI COMPOSITE +0.23% ended with positive returns.

ETFs

	Curr.	Close	1D	5D	30 D	YTD	Exchange
SPDR S&P 500 ETF TRUST	USD	415.26	2.45%	6.58%	-0.48%	-12.57%	NYSE Arca
ISHARES MSCI EMERGING MARKET	USD	42.05	1.15%	2.21%	1.01%	-13.92%	NYSE Arca
ISHARES IBOXX HIGH YLD CORP	USD	80.19	0.89%	4.88%	1.42%	-7.84%	NYSE Arca
FINANCIAL SELECT SECTOR SPDR	USD	35.57	1.69%	8.05%	0.79%	-8.91%	NYSE Arca
VANECK GOLD MINERS ETF	USD	32.51	0.37%	1.40%	-6.31%	1.50%	NYSE Arca
ISHARES RUSSELL 2000 ETF	USD	187.64	2.69%	6.57%	0.36%	-15.65%	NYSE Arca
SPDR GOLD SHARES	USD	172.85	0.05%	0.48%	-1.78%	1.11%	NYSE Arca
ISHARES 20+ YEAR TREASURY BO	USD	119.08	0.24%	0.48%	-1.46%	-19.64%	NASDAQ GM
INVESCO QQQ TRUST SERIES 1	USD	309.10	3.26%	7.07%	-2.42%	-22.31%	NASDAQ GM
ISHARES BIOTECHNOLOGY ETF	USD	119.50	3.20%	3.36%	0.38%	-21.70%	NASDAQ GM
ENERGY SELECT SECTOR SPDR	USD	88.53	1.83%	8.27%	18.26%	59.51%	NYSE Arca
PROSHARES ULTRA VIX ST FUTUR	USD	14.21	-5.83%	-11.24%	-19.94%	14.32%	Cboe BZX
UNITED STATES OIL FUND LP	USD	85.46	1.03%	4.67%	11.90%	57.21%	NYSE Arca
ISHARES MSCI BRAZIL ETF	USD	35.72	0.62%	6.25%	8.21%	27.25%	NYSE Arca
SPDR S&P OIL & GAS EXP & PR	USD	157.04	3.99%	14.81%	19.76%	63.81%	NYSE Arca
UTILITIES SELECT SECTOR SPDR	USD	75.37	1.56%	5.06%	3.74%	5.29%	NYSE Arca
ISHARES US REAL ESTATE ETF	USD	100.36	2.68%	5.78%	-6.00%	-13.59%	NYSE Arca
SPDR S&P BIOTECH ETF	USD	71.09	3.83%	1.08%	-6.36%	-36.50%	NYSE Arca
ISHARES IBOXX INVESTMENT GRA	USD	115.29	0.52%	2.55%	1.56%	-13.00%	NYSE Arca
ISHARES JP MORGAN USD EMERGI	USD	91.72	0.16%	2.33%	-0.61%	-15.90%	NASDAQ GM
REAL ESTATE SELECT SECT SPDR	USD	44.82	2.82%	5.83%	-6.78%	-13.49%	NYSE Arca
ISHARES CHINA LARGE-CAP ETF	USD	30.94	0.72%	1.71%	4.99%	-15.42%	NYSE Arca
CONSUMER STAPLES SPDR	USD	75.00	1.16%	6.08%	-4.64%	-2.74%	NYSE Arca
VANECK JUNIOR GOLD MINERS	USD	39.87	0.50%	2.00%	-5.90%	-4.91%	NYSE Arca
SPDR BLOOMBERG HIGH YIELD BO	USD	99.28	0.94%	4.84%	0.88%	-8.56%	NYSE Arca
VANGUARD REAL ESTATE ETF	USD	100.30	2.68%	5.77%	-6.24%	-13.54%	NYSE Arca
GRAYSCALE BITCOIN TRUST BTC	USD	18.96	-0.42%	1.17%	-29.41%	-44.64%	OTC US

USA Treasury Bonds Yield Curve (%)



Source: Bloomberg

Capital Market Laboratory Coordinator: MS Javier Penny Pestana

Collaboration: Sebastian Ore, Fabrizio Lavallo, Miguel Solimano y Jhonatan Cueva

email: pulsobursatil@ulima.edu.pe

facebook: www.facebook.com/pulsobursatil.ul

LIMA

Stocks

Ticker	Currency	Price	1D*	5D*	30D*	YTD*	Frequency	Volume (US\$)	Beta	Dividend Yield (%)	Price Earning	Market Cap. (M US\$)	Economic Sector*	Index Weight
▼ ALICORC1 PE**	S/.	5.01	-0.55%	0.15%	-6.72%	-5.57%	100.00%	1,764,009	0.83	16.67	11.23	1,157.22	Industrial	3.53%
- ATACOB1 PE**	S/.	0.10	0.00%	0.00%	-9.09%	-16.67%	20.00%	3	0.97	0.00	-	33.78	Mining	1.02%
▲ BACKUS1 PE**	S/.	21.50	0.23%	-4.44%	-8.90%	4.88%	95.00%	64,243	0.77	20.30	7.28	7,973.17	Industrial	0.82%
▲ BAP PE**	US\$	142.75	1.47%	5.90%	3.44%	15.33%	100.00%	458,701	1.32	2.80	-	13,473.08	Diverse	5.82%
▲ BVN PE**	US\$	9.04	2.73%	8.39%	2.15%	23.84%	100.00%	318,328	1.35	0.77	-	2,491.74	Mining	5.88%
▲ CASAGRC1 PE**	S/.	7.20	2.86%	12.50%	-10.00%	-20.88%	85.00%	4,524	1.19	75.02	4.31	164.31	Agricultural	1.31%
▲ BBVAC1 PE**	S/.	1.62	4.52%	8.00%	-10.00%	-10.50%	100.00%	22,467	0.83	7.12	6.17	2,966.17	Finance	2.85%
- CORARE1 PE**	S/.	1.48	0.00%	4.96%	-0.67%	-13.95%	95.00%	4,291	0.77	17.33	2.60	587.21	Industrial	1.72%
▼ CPACASC1 PE**	S/.	4.00	-1.23%	2.56%	-9.30%	-19.19%	100.00%	23,294	0.73	19.75	11.11	502.98	Industrial	2.38%
- CVERDEC1 PE**	US\$	30.00	0.00%	1.69%	-25.00%	-19.42%	100.00%	362,310	0.88	6.19	8.11	10,501.68	Mining	5.25%
▲ ENGEPEC1 PE**	S/.	1.85	0.54%	-2.63%	-9.76%	-10.63%	95.00%	26,205	0.78	16.96	6.90	1,200.64	Public Services	1.44%
- ENDISPC1**	S/.	3.70	0.00%	0.00%	-6.09%	-7.50%	35.00%	5,313	0.84	0.00	6.64	640.09	Public Services	0.98%
▲ FERREYC1 PE**	S/.	2.15	2.38%	1.42%	-6.93%	4.88%	100.00%	38,205	1.01	11.09	4.11	551.05	Diverse	4.90%
▼ AENZAC1 PE**	S/.	1.06	-3.64%	6.00%	-24.29%	-22.63%	90.00%	25,716	1.05	0.00	-	343.74	Diverse	4.05%
▼ IFS PE**	US\$	26.05	-2.03%	0.23%	-5.27%	-2.98%	100.00%	43,171	0.99	9.21	-	3,006.64	Diverse	7.22%
▲ INRETC1 PE**	US\$	31.50	0.80%	1.29%	-13.46%	-9.87%	95.00%	106,179	0.68	4.35	20.34	3,425.53	Diverse	5.28%
- LUSURC1 PE**	S/.	14.35	0.00%	3.24%	-13.81%	0.77%	55.00%	12	0.00	0.00	11.90	1,893.08	Public Services	1.81%
▲ MINSUR1 PE**	S/.	4.76	1.28%	6.97%	-17.22%	20.51%	100.00%	124,556	1.04	14.44	1.83	3,717.79	Mining	3.09%
▲ PML PE**	US\$	0.13	8.33%	18.18%	0.00%	8.33%	15.00%	11,520	1.10	0.00	-	34.37	Mining	2.12%
▲ SCCO PE**	US\$	62.10	1.75%	5.25%	-1.27%	0.52%	100.00%	14,493	0.95	6.68	13.31	48,008.89	Industrial	2.12%
▲ SIDERC1 PE**	S/.	1.48	3.50%	7.25%	0.68%	-7.50%	75.00%	37,979	0.69	42.36	3.48	280.67	Mining	2.14%
- TV PE**	US\$	0.52	0.00%	6.12%	-37.35%	-60.00%	95.00%	520	1.20	0.00	-	51.45	Industrial	1.43%
▲ UNACEMC1 PE**	S/.	1.58	1.28%	0.00%	-18.97%	-34.17%	85.00%	2,900	1.07	6.96	-	778.24	Mining	2.93%
- VOLCABC1 PE**	S/.	0.63	0.00%	-1.56%	-25.88%	5.00%	100.00%	136,175	1.11	0.00	8.73	695.77	Industrial	3.00%
- BROCALC1 PE**	S/.	7.00	0.00%	0.00%	-6.67%	34.62%	5.00%	4	0.00	0.00	53.15	308.16	Mining	5.90%
- RIMSEGC1 PE**	S/.	0.80	0.00%	0.00%	0.00%	-6.98%	5.00%	2,413	0.00	0.00	11.82	358.00	Finance	3.09%
- CORAREC1 PE**	US\$	2.13	0.00%	0.47%	-0.93%	12.11%	45.00%	122,814	0.00	0.00	3.75	2,167.49	Mining	2.12%
- ENGIEC1 PE**	S/.	5.68	0.00%	0.00%	-7.94%	-3.07%	25.00%	8	0.50	0.00	15.85	925.39	Diversas	2.12%
- GBVLAC1 PE**	S/.	2.42	0.00%	0.00%	-3.97%	-11.03%	30.00%	5,228	0.00	0.00	25.15	119.38	Diversas	2.14%

Quantity of shares: 29
Source: Bloomberg, Economática
* Bloomberg Industry Classification System
** PER is used in the stock market and original currency of the instrument

Up 13
Down 4
Hold 12

*Legend: Variation 1D: 1 Day; 5D: 5 Days; 1M: 1 Month; YTD: Var.% 12/31/21 to date

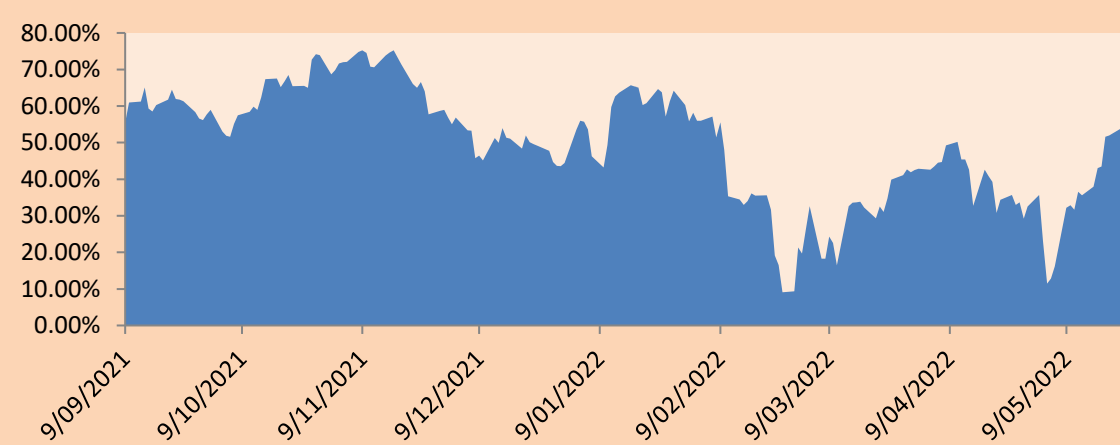
Sectorial Indices

	Close	1D*	5D*	30D*	YTD*	Beta
▲ S&P/BVLMining	402.23	2.10%	3.98%	-7.73%	-2.28%	1.01
▲ S&P/BVLConsumer	1,043.67	1.18%	-0.26%	-9.46%	-9.09%	0.50
▲ S&P/BVLIndustrials	230.64	0.58%	1.72%	-10.81%	-10.63%	0.79
▲ S&P/BVLFinancials	972.17	1.54%	3.79%	0.77%	7.29%	1.37
▼ S&P/BVLConstruction	231.84	-0.22%	1.86%	-12.48%	-18.19%	0.70
▲ S&P/BVLPublicSvcs	530.88	0.16%	-0.79%	-7.05%	-3.21%	0.13
▲ S&P/BVLElectricUtil	518.28	0.16%	-0.79%	-7.05%	-3.21%	0.13

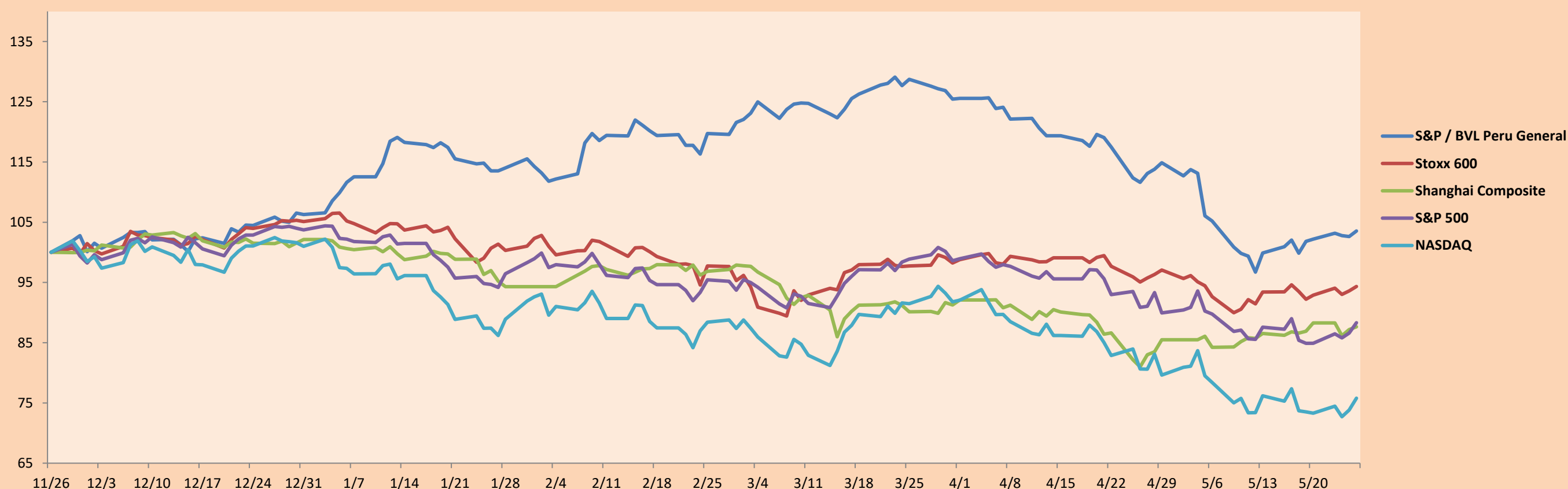
S&P/BVLConstructionTRPEN

*Legend: Variation 1D: 1 Day; 5D: 5 Days; 1M: 1 Month; YTD: Var.% 12/31/21 to date

Correlation Graph of Returns of Mining Index against Metallic Index of London (3 months)



Indices (6 months)



Base: 26/11/21=100
Source: Bloomberg

Capital Market Laboratory Coordinator: MS Javier Penny Pestana
Collaboration: Sebastian Ore, Fabrizio Lavalle, Miguel Solimano y Jhonatan Cueva
email: pulsobursatil@ulima.edu.pe
facebook: www.facebook.com/pulsobursatil.ul

SOVEREIGN RATING

RISK RATINGS

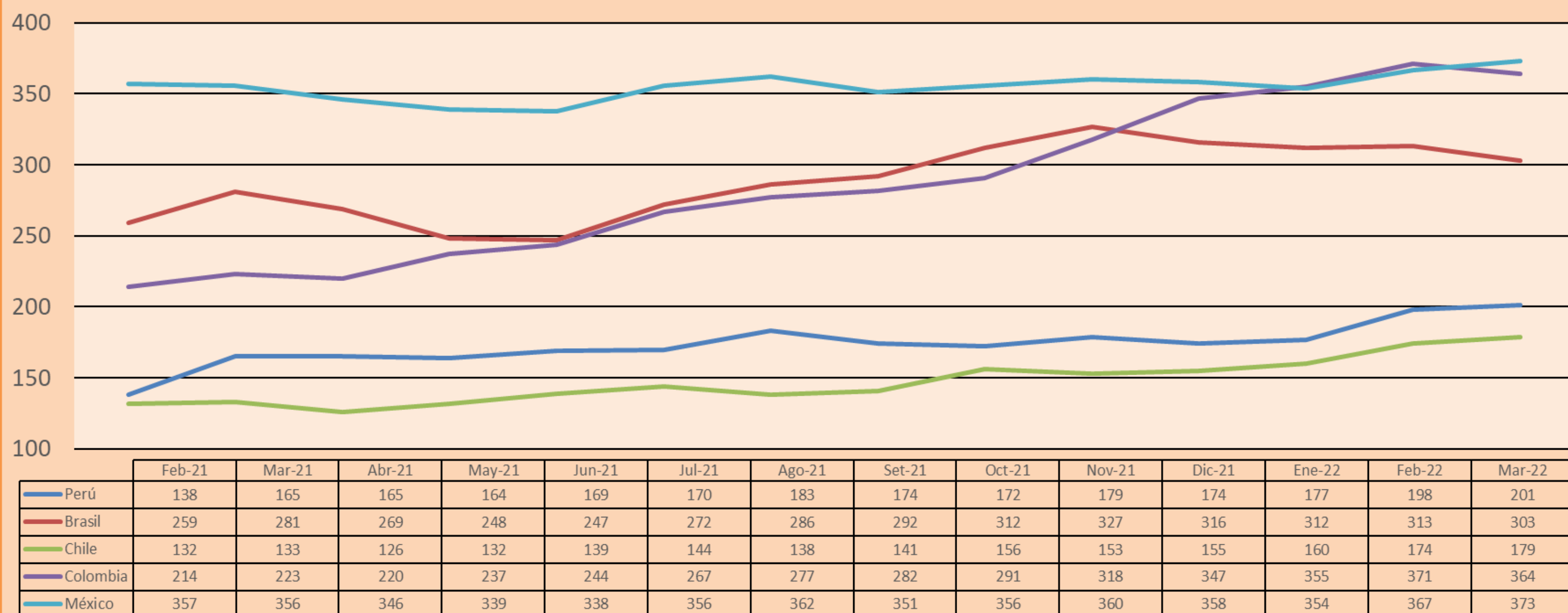
Moody's	S&P	Fitch	
Aaa	AAA	AAA	Prime
Aa1	AA+	AA+	High credit quality
Aa2	AA	AA	
Aa3	AA-	AA-	
A1	A+	A+	Medium-high grade, with low credit risk
A2	A	A	
A3	A-	A-	
Baa1	BBB+	BBB+	Moderate Credit Risk
Baa2	BBB	BBB	
Baa3	BBB-	BBB-	
Ba1	BB+	BB+	It has speculative elements and it is subject to substantial credit risk
Ba2	BB	BB	
Ba3	BB-	BB-	
B1	B+	B+	It is considered speculative and it has high credit risk
B2	B	B	
B3	B-	B-	
Caa1	CCC+	CCC	
Caa2	CCC	CCC	
Caa3	CCC-	CCC	
Ca	CC	CC	Very close to default or in default
	C	C	
C	D	DDD DD D	

Source: Bloomberg

Latin America Credit Rating			
Clasificadora de riesgo			
Country	Moody's	Fitch	S&P
Peru	Baa1	BBB	BBB
México	Ba2	BB-	BB-
Venezuela	C	WD	NR
Brazil	Ba2	BB-	BB-
Colombia	Baa2	BB+	BB+
Chile	A1	A-	A
Argentine	Ca	WD	CCC+
Panama	Baa2	BBB-	BBB

Source: Bloomberg

LATAM Country Risk(bps)



Source: BCRP

Capital Market Laboratory Coordinator: MS Javier Penny Pestana
Collaboration: Sebastian Ore, Fabrizio Lavalle, Miguel Solimano y Jhonatan Cueva
email: pulsobursatil@ulima.edu.pe
facebook: www.facebook.com/pulsobursatil.ul