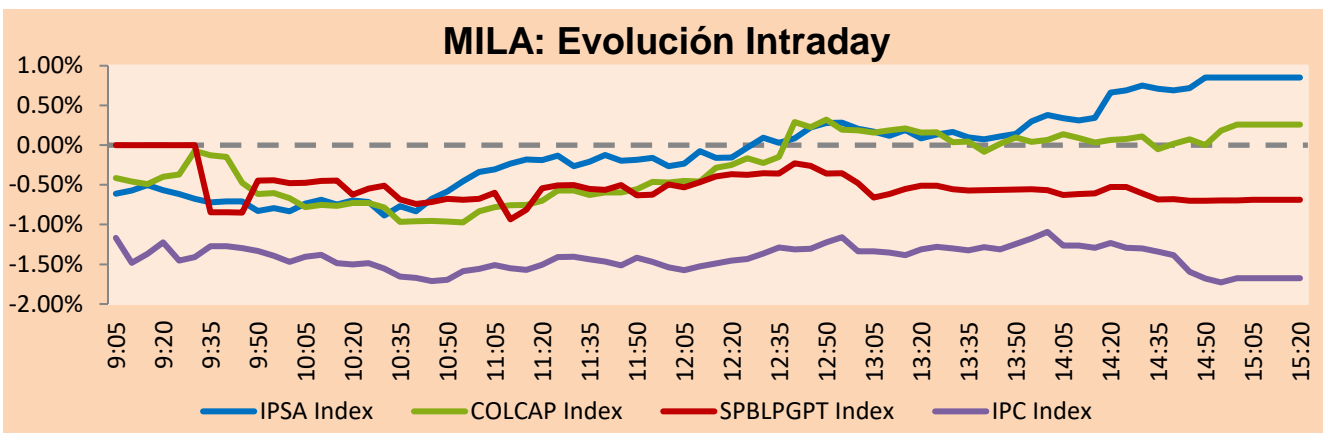


## MILA

Lima, June 10, 2022

Main Indexes	Close	1 D	5 D	1 M	YTD	Cap. Burs. (US\$ bill)
▲ IPSA (Chile)	5,237.85	1.03%	-2.14%	11.51%	21.57%	108.21
▲ IGPA (Chile)	27,547.95	1.12%	-2.05%	13.94%	27.73%	125.43
▼ COLSC (Colombia)	917.63	-0.29%	-2.93%	-2.40%	-5.70%	6.12
▲ COLCAP (Colombia)	1,530.73	0.26%	-5.16%	1.26%	8.49%	84.19
▼ S&P/BVL (Perú)*	20,228.03	-0.70%	-3.11%	2.00%	-4.19%	95.33
▼ S&P/BVL SEL (Perú)	534.46	-0.18%	-2.19%	3.54%	-5.16%	85.41
▲ S&P/BVL LIMA 25	28,784.75	0.54%	-0.27%	1.34%	-4.92%	94.51
▼ IPC (México)	48,471.52	-1.66%	-4.37%	-1.31%	-9.01%	313.07
▼ S&P MILA 40	516.40	-2.66%	-6.41%	9.14%	16.08%	6,249.24

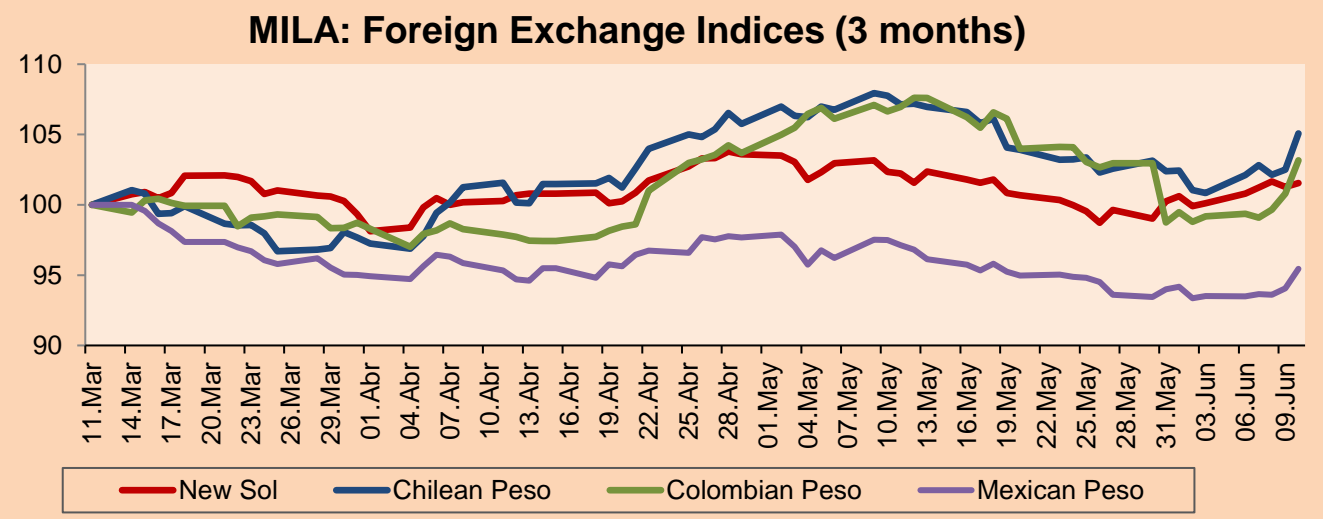
\*Legend: Variation 1D: 1 day; 5D: 5 days; 1M: 1 Month; YTD: Var% 12/31/21 to date



Source: Bloomberg

Currency	Price	1D*	5D*	30 D*	YTD*
▲ Sol (PEN)	3,761.9	0.28%	1.43%	-0.68%	-5.93%
▲ Chilean Peso (CLP)	845.50	2.51%	4.19%	-1.94%	-0.76%
▲ Colombian Peso (COP)	3,940.95	2.34%	4.03%	-3.55%	-3.42%
▲ Mexican Peso (MXN)	19.96	1.46%	2.05%	-1.74%	-2.77%

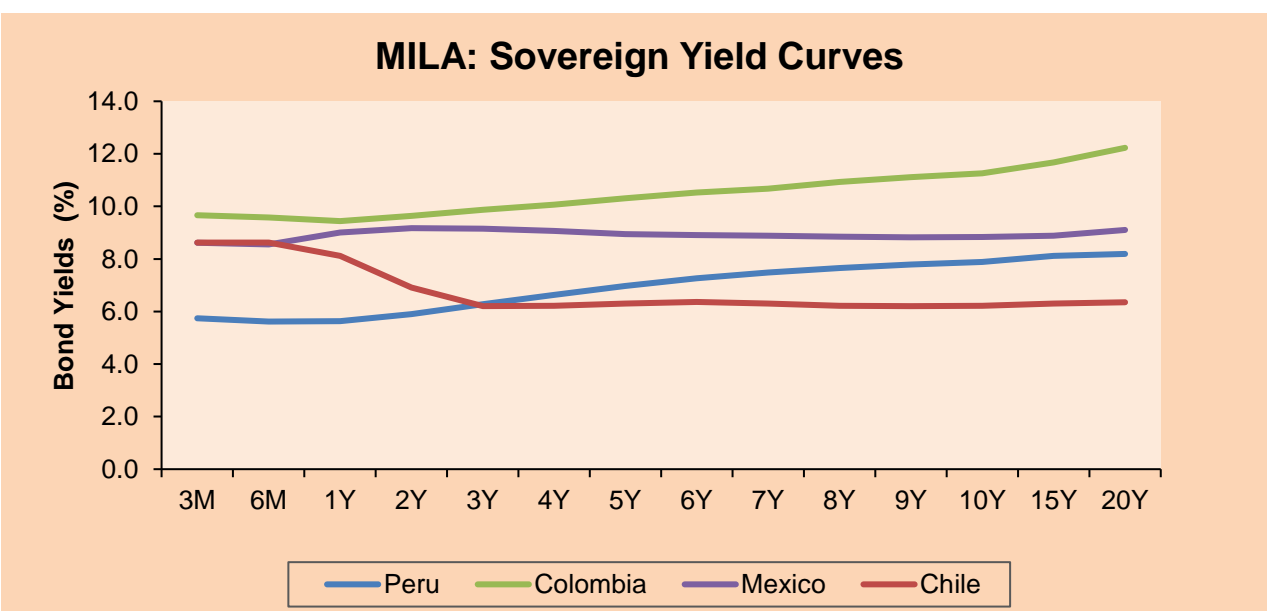
\*Legend: Variation 1D: 1 day; 5D: 5 days; 1M: 1 Month; YTD: Var% 12/31/21 to date



Base: 11/03/22=100

Source: Bloomberg

Fixed Income	Currency	Price	Bid Yield (%)	Ask Yield (%)	Duration
PERU 7.35 07/21/25	USD	108.976	4.29	4.18	2.73
PERU 4.125 08/25/27	USD	98.867	4.40	4.34	4.59
PERU 8.75 11/21/33	USD	129.664	5.28	5.25	7.76
PERU 6.55 03/14/37	USD	111.474	5.42	5.40	9.21
PERU 5.625 11/18/2050	USD	107.114	5.15	5.14	14.54
CHILE 2.25 10/30/22	USD	100.08	2.50	1.56	0.38
CHILE 3.125 01/21/26	USD	97.949	3.80	3.68	3.35
CHILE 3.625 10/30/42	USD	80.769	5.20	5.12	13.64
COLOM 11.85 03/09/28	USD	140.285	4.04	3.83	4.40
COLOM 10.375 01/28/33	USD	125.375	7.08	6.83	6.71
COLOM 7.375 09/18/37	USD	98.858	7.53	7.47	8.94
COLOM 6.125 01/18/41	USD	84.822	7.68	7.66	10.13
MEX 4 10/02/23	USD	84.822	7.683	7.656	10.13
MEX5.55 01/45	USD	94.625	5.99	5.98	12.32



Source: Bloomberg

### Equity

Largest gains	Exchange	Currency	Price	▲%	Largest losses	Exchange	Currency	Price	▼%
BUENAVENTURA-ADR	Peru	USD	8.25	4.43	FIBRA TERRA	Mexico	MXN	26.9	-5.94
CMPC	Chile	CLP	1459.50	4.39	GRUPO BIMBO-A	Mexico	MXN	61.4	-4.84
SURAMERICANA	Colombia	COP	37300.00	3.61	CREDICORP LTD	Peru	USD	126	-4.83
SMU SA	Chile	CLP	92.00	3.37	CEMEX SAB-CPO	Mexico	MXN	7.83	-4.04
VOLCAN CIA MIN-B	Peru	PEN	0.62	3.33	ORBIA ADVANCE CO	Mexico	MXN	50.39	-3.47

Per Turnover	Exchange	Amount (US\$)	Per Volume	Exchange	Volume
AMERICA MOVIL-L	Mexico	40,683,914	ITAU CORPBANCA	Chile	530,558,119
WALMART DE MEXIC	Mexico	40,485,021	BANCO SANTANDER	Chile	90,262,717
GRUPO F BANORT-O	Mexico	29,518,716	ENEL CHILE SA	Chile	76,723,804
SOQUIMICH-B	Chile	24,079,551	BANCO DE CHILE	Chile	53,897,055
GRUPO MEXICO-B	Mexico	15,828,721	AMERICA MOVIL-L	Mexico	41,819,859

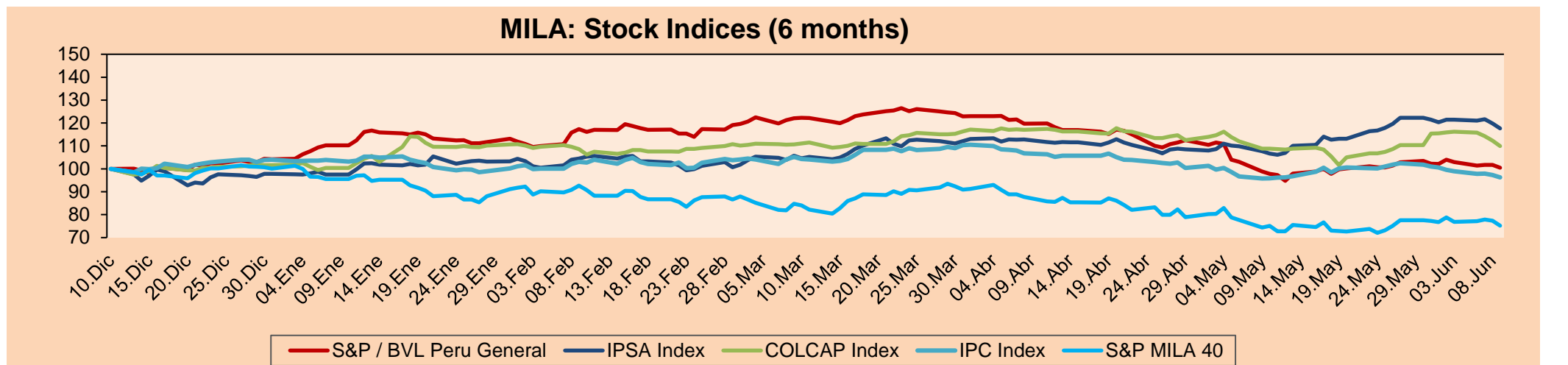
### MILA

Peru: The BVL General index ended today's session with a negative -0.69%. The index maintains a negative cumulative annual trend of -3.09% in local currency, while the dollar-adjusted performance amounted to -4.46%. Then, the S&P/BVL Peru SEL varied -0.69% while the S&P/BVL LIMA 25 varied +0.56%. The spot PEN reached S/.3.7620. Headline: Exchange rate closes the week higher due to higher global inflation.

Chile: The IPSA index ended the day with a positive return of +1.03%. The most benefited sectors of the day were Materials (+3.27%) and Energy (+3.13%). The best performing stocks were Empresas CMPC SA (+4.39%) and SMU SA (+3.37%). Headline: Dollar closes \$20 higher amid expectations of a firm rate hike in the US after surprise inflation in May.

Colombia: The COLCAP index ended the session with a positive return of +0.26%. The sectors that benefited the most during the day were Materials (+1.13%) and Utilities (+1.10%). The best performing stocks were Grupo Bolivar SA (+4.69%) and Grupo de Inv suramericana (+3.61%). Headline: Strong growth of foreign direct investment in the country.

Mexico: The IPC index closed the day in negative territory at -1.66%. The worst performing sectors of the day were Health Care (-3.79%) and Non-Basic Consumer Products (-2.14%). The worst performing stocks were Controladora Vuela Cia (-8.68%) and Grupo Bimbo SAB (+4.84%). Headline: Industrial activity rebounded 0.55% in April on the back of mining and manufacturing.

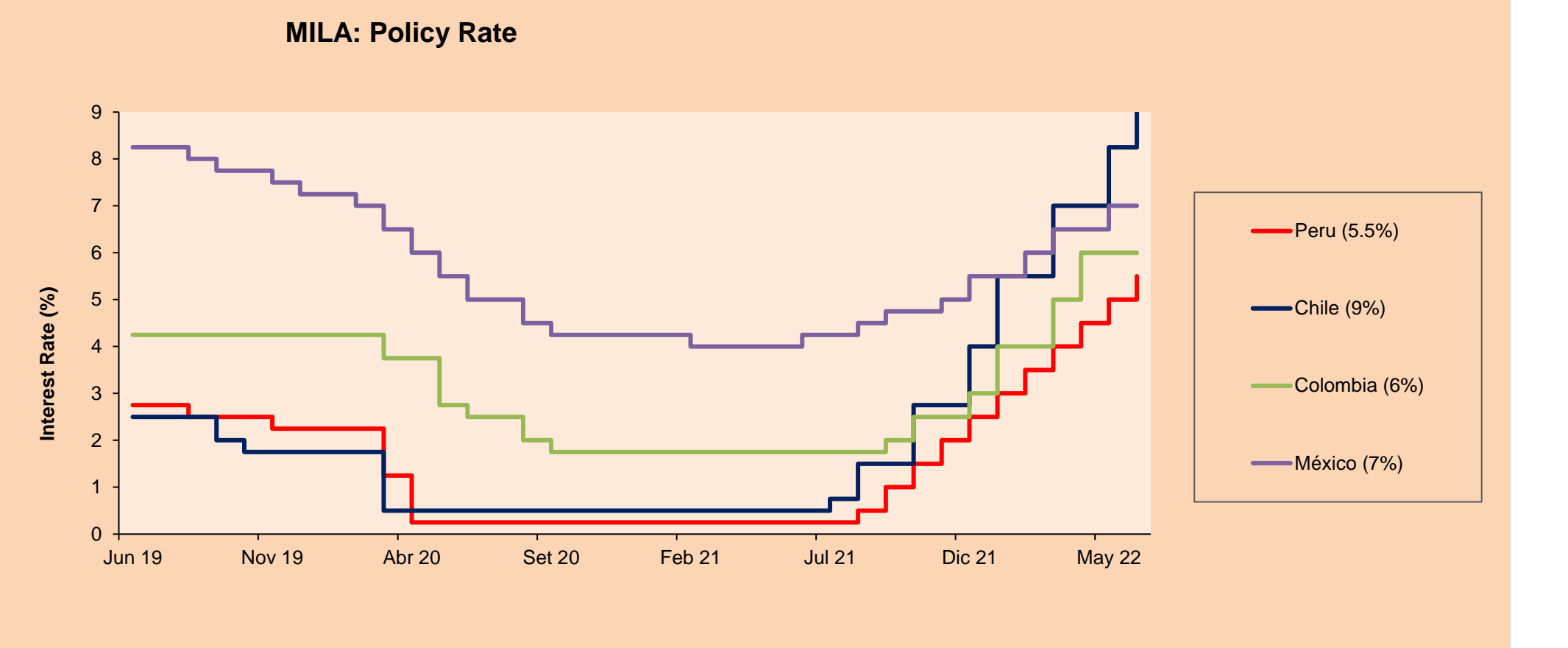


Base: 13/12/21=100

Source: Bloomberg

### ETFs

ETFs	Curr.	Close	1D	5D	30 D	YTD	Exchange
▼ iShares MSCI All Peru Caped Index Fund	USD	29.25	-0.78%	-6.79%	3.21%	-1.25%	NYSE Arca
▼ iShares MSCI All Chile Caped Index Fund	USD	27.7	-2.05%	-9.92%	10.49%	19.97%	Cboe BZX
▼ Global X MSCI Colombia	USD	10.82	-2.87%	-10.67%	1.96%	8.27%	NYSE Arca
▼ iShares MSCI Mexico Capped	USD	47.41	-3.48%	-7.46%	-1.13%	-6.30%	NYSE Arca
▼ iShares MSCI Emerging Markets	USD	41.13	-1.11%	-2.93%	3.71%	-15.80%	NYSE Arca
▼ Vanguard FTSE Emerging Markets	USD	42.77	-0.79%	-1.54%	5.14%	-13.53%	NYSE Arca
▼ iShares Core MSCI Emerging Markets	USD	50.51	-1.00%	-3.29%	3.14%	-15.62%	NYSE Arca
▼ iShares JP Morgan Emerging Markets Bonds	USD	55.88	-0.60%	-2.90%	-0.45%	-11.05%	Cboe BZX
▼ Morgan Stanley Emerging Markets Domestic	USD	4.62	-0.86%	-2.12%	3.59%	-15.69%	New York



Source: Bloomberg

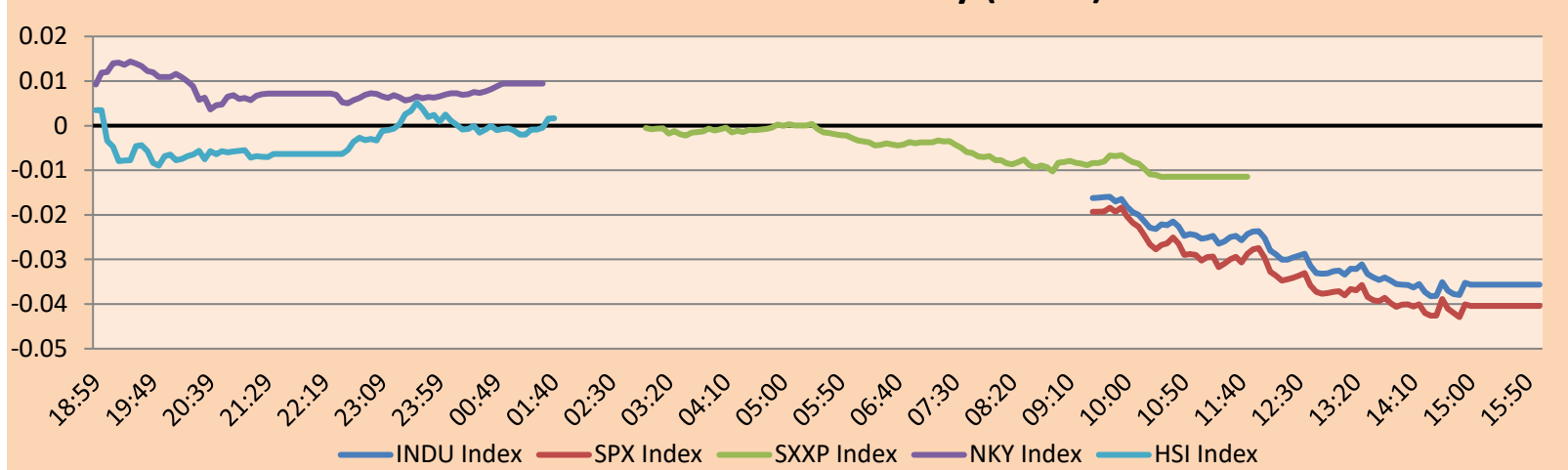


## WORLD

Main Indices	Close	1 D*	5 D*	1 M*	YTD*	Market Cap. (US\$ Mill.)
▼ Dow Jones (USA)	31,392.79	-2.73%	-4.58%	-2.39%	-13.61%	10,013,535
▼ Standard & Poor's 500 (EEUU)	3,900.86	-2.91%	-5.05%	-2.50%	-18.16%	35,195,741
▼ NASDAQ Composite (USA)	11,340.02	-3.52%	-5.60%	-3.39%	-27.52%	20,054,485
▼ Stoxx EUROPE 600 (Europe)	422.71	-2.69%	-3.95%	0.58%	-13.34%	11,079,792
▼ DAX (Germany)	13,761.83	-3.08%	-4.83%	1.68%	-13.37%	1,354,946
▼ FTSE 100 (United Kingdom)	7,317.52	-2.12%	-2.86%	1.03%	-0.91%	1,634,739
▼ CAC 40 (France)	6,187.23	-2.69%	-4.60%	1.15%	-13.50%	1,882,508
▼ IBEX 35 (Spain)	8,390.60	-3.68%	-3.83%	3.09%	-3.71%	526,895
▼ MSCI AC Asia Pacific Index	166.16	-1.20%	-1.14%	5.18%	-12.91%	22,512,817
▼ HANG SENG (Hong kong)	21,806.18	-0.29%	3.43%	9.59%	-6.80%	3,467,787
▲ SHANGHAI SE Comp. (China)	3,284.83	1.42%	2.80%	6.50%	-9.75%	6,602,110
▲ NIKKEI 225 (Japan)	27,824.29	-1.49%	0.23%	5.28%	-3.36%	3,534,045
▼ S&P / ASX 200 (Australia)	6,931.98	-1.25%	-4.24%	-2.02%	-6.89%	1,628,675
▼ KOSPI (South Korea)	2,595.87	-1.13%	-2.37%	-0.32%	-12.82%	1,555,002

\*Legend: Variation 1D: 1 Day; 5D: 5 Days; 1M: 1 Month; YTD: Var.% 12/31/21 to date

### Mercado Evolución Intraday (var %)

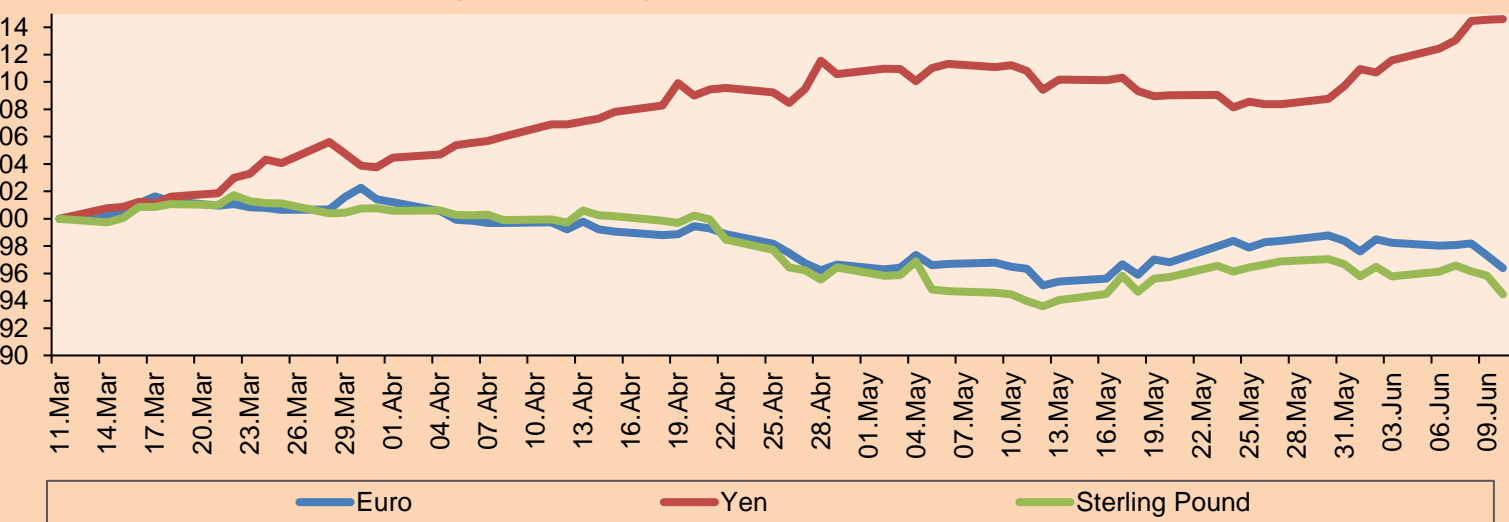


Source: Bloomberg

Currency	Price	1 D*	5 D*	1 M*	YTD*
▼ Euro	1.0519	-0.92%	-1.87%	0.06%	-7.48%
▲ Yen	134.4100	0.04%	2.70%	3.42%	16.80%
▼ Sterling Pound	1.2315	-1.42%	-1.39%	0.52%	-8.99%
▲ Yuan	6.7091	0.25%	0.73%	-0.19%	5.55%
▲ Hong Kong Dollar	7.8495	0.01%	0.05%	-0.01%	0.68%
▲ Brazilian Real	4.9876	1.64%	4.48%	-2.92%	-10.55%
▲ Argentine Peso	121.7956	0.14%	0.93%	4.02%	18.55%

\*Legend: Variation 1D: 1 Day; 5D: 5 Days; 1M: 1 Month; YTD: Var.% 12/31/21 to date

### Foreign Exchange Indices (3 months)

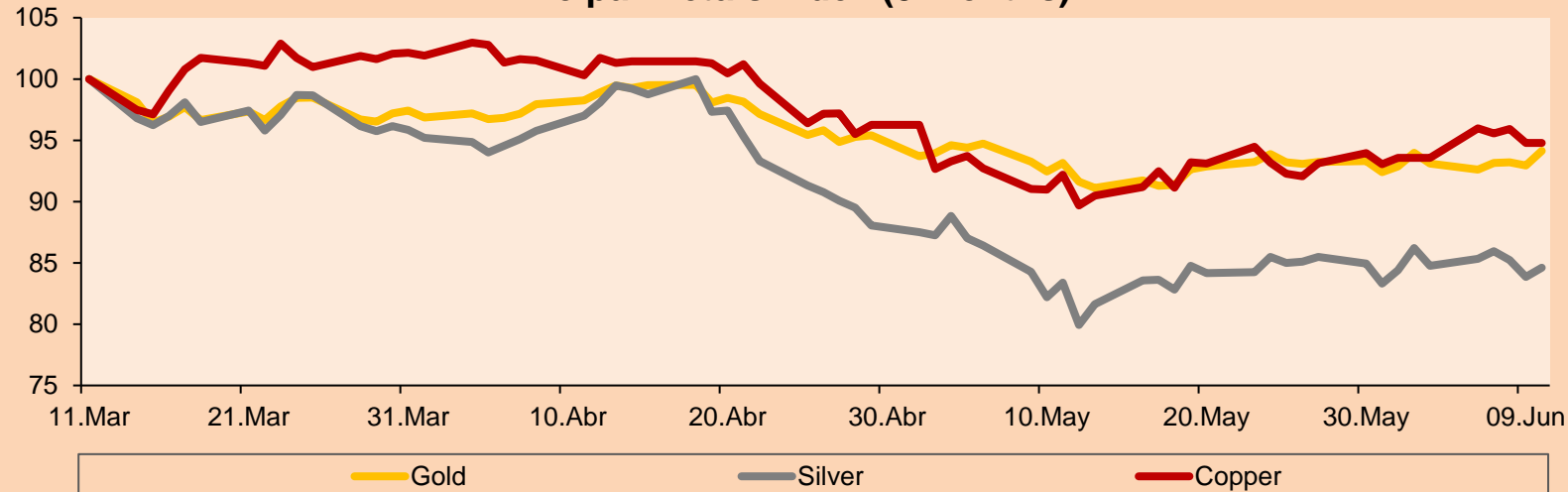


Base: 11/03/22=100  
Source: Bloomberg

Commodities	Close	1 D*	5 D*	1 M*	YTD*
▲ Oro (US\$ Oz. T) (LME)	1,871.60	1.28%	1.10%	1.04%	2.32%
▲ Plata (US\$ Oz. T) (LME)	21.89	0.91%	-0.16%	1.47%	-6.09%
- Cobre (US\$ TM) (LME)	9,620.10	0.00%	1.28%	2.79%	-1.24%
- Zinc (US\$ TM) (LME)	3,777.25	0.00%	-2.76%	2.54%	5.22%
▼ Petróleo WTI (US\$ Barril) (NYM)	120.67	-0.69%	1.51%	16.00%	65.80%
▼ Estaño (US\$ TM) (LME)	37,015.00	0.00%	5.16%	2.91%	-5.99%
- Plomo (US\$ TM) (LME)	2,197.00	0.00%	1.57%	4.36%	-6.02%
▼ Azúcar #11 (US\$ Libra) (NYB-ICE)	19.07	-2.26%	-2.05%	2.03%	3.87%
▼ Cacao (US\$ TM) (NYB-ICE)	2,432.00	-1.66%	-2.91%	-2.84%	-5.33%
▼ Café Arábica (US\$ TM) (NYB-ICE)	228.80	-2.56%	-1.61%	4.09%	1.92%

\*Leyenda: Variación 1D: 1 Día; 5D: 5 Días; 1M: 1 Mes; YTD: Var.% 31/12/21 a la fecha

### Principal Metals Index (3 months)



Base: 11/03/22=100  
Source: Bloomberg

## Equity

Germany (Stocks from DAX Index)

Largest gains	Curr.	Price	▲%	Exchange	Largest losses	Curr.	Price	▼%	Exchange
FME GY	EUR	51.02	-0.51	Xetra	HEI GY	EUR	51.44	-4.56	Xetra
EOAN GY	EUR	9.522	-0.54	Xetra	BAS GY	EUR	49.63	-4.32	Xetra
FRE GY	EUR	30.03	-1.25	Xetra	1COV GY	EUR	41.56	-4.15	Xetra
HFG GY	EUR	33.22	-1.37	Xetra	HNR1 GY	EUR	137.2	-3.75	Xetra

Europe (Stocks from STOXX EUROPE 600)

Largest gains	Curr.	Price	▲%	Exchange	Largest losses	Curr.	Price	▼%	Exchange
SOBI SS	SEK	215	4.12	Stockholm	OMV AV	EUR	48.78	-10.89	Vienna
HUH1V FH	EUR	36.2	2.81	Helsinki	FBK IM	EUR	10.9	-9.47	Borsa Italiana
AVV LN	GBp	2434	2.35	Londres	BBVA SQ	EUR	4.3105	-9.13	Soc.Bol SIBE
IGG LN	GBp	684	2.09	Londres	UCG IM	EUR	9.606	-9.10	Borsa Italiana

## Global Overview:

### United States:

All three major U.S. stock indexes were down sharply on Friday, extending losses for a third straight session, after stronger-than-expected inflation data lent support to bets that the Federal Reserve will continue to raise rates aggressively. The Dow Jones Industrial Average and the S&P 500 each lost 2.7% and 2.9%, while the NASDAQ plunged 3.5%. The annual inflation rate in the U.S. unexpectedly accelerated to 8.6% in May 2022, the highest since December 1981 and versus market forecasts of 8.3%. At the same time, Michigan consumer sentiment fell to an all-time low of 50.2 in June, further fueling concerns of an impending recession. All sectors closed in the red, with banks and retailers leading the losses, while the food and beverage sector finished just below the bottom line. For the week, the S&P 500 and NASDAQ lost 5.1% and 5.6%, the biggest declines since the week ended January 21, while the Dow retreated 4.6%.

### Europe:

The main European indices ended the session with negative returns. The pan-European STOXX 600 index closed lower on Wednesday, in a context in which market sentiment is weakened by the release of the May annual inflation results for the United States, reaching 8.9%, the highest figure in the last 40 years. The FTSE 100 also closed with returns in negative territory, as investor expectations worsened after Shanghai reinstated the lockdowns in some areas of China due to the increase in OMICRON cases. Likewise, the British stock market was also affected by the increase in inflation in the United States, affecting the perception of regional investors. Regarding the German market, the DAX index closed significantly negative, following the pessimistic dynamics of regional investors focused on the increase in US inflation. It was also affected by the ECB's more hawkish policy statements last Thursday. Finally, the French market closed in similar conditions, following the dynamics of the other European countries and affected mainly by banking sector stocks. To be more specific, Societe Generale fell 6%, Credit Agricole 5.9% and BNP Paribas 5%. Thus, FTSE 100 -2.12%; CAC 40 -2.69%; DAX -3.08%; STOXX 600 -2.69% ended with negative performances.

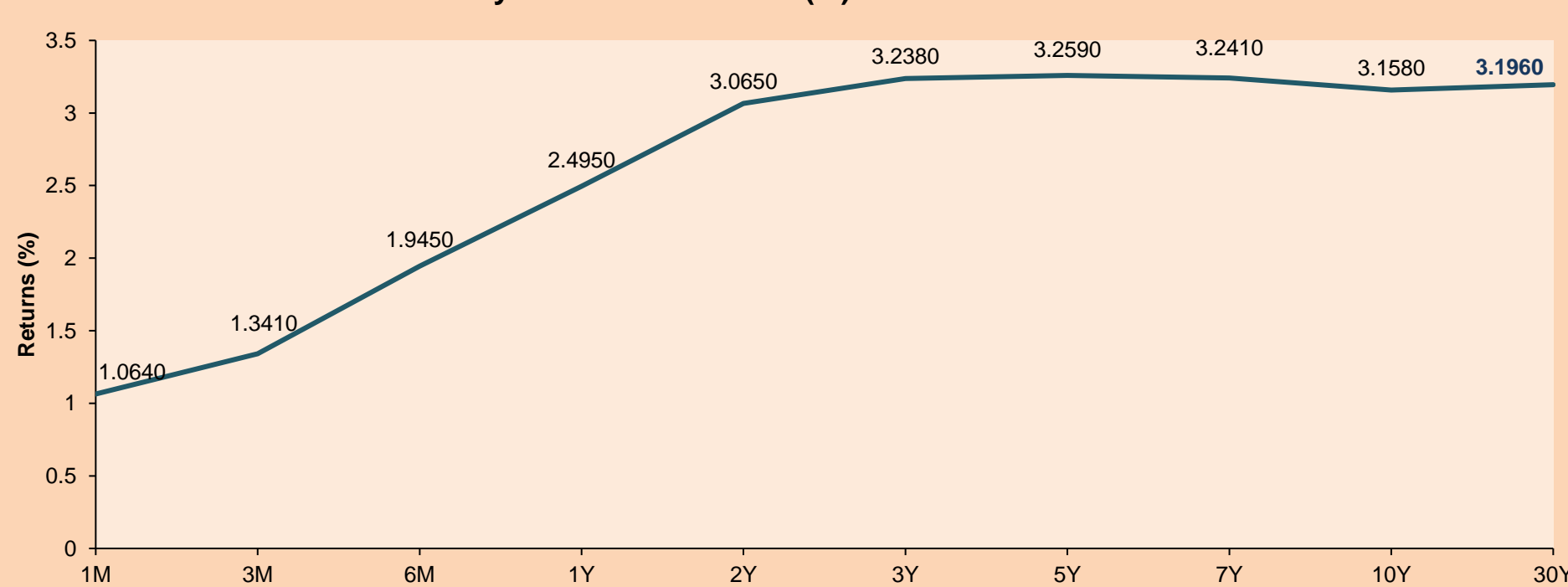
### Asia:

Major Asian indices closed with mostly mixed performances. The Chinese market closed in positive territory, on a backdrop where the producer price index rose by 6.4%; on the other hand, technology stocks rose this session on investors' hopes that the worst of the Beijing crackdown is over. The Hang Seng index finished lower on concerns about Shanghai, after it announced it would make a 7-district lockdown this weekend, keeping investors nervous that COVID Zero's policies could hurt economic growth. Likewise, China became the main exporter of alumina, exporting 12 times more in April than in March. The South Korean market fell this session, in a context where the governor of the Bank of Korea warned that missing the opportunity to raise interest rates when they were needed could increase the damage to the economy. The Japanese market closed in negative territory, with Bank of Japan officials indicating concerns over the weakening of the Japanese Yen, stating that they would take action if necessary. The Australian market ended with negative results, in a context where the US Federal Reserve is expected to raise another 50 basis points in its next 3 or 4 meetings. Thus, NIKKEI -1.49%; HANG SENG -0.29%; CSI 300 +1.52%; S&P/ASX 200 -1.25%; KOSPI -1.13%; SHANGHAI COMPOSITE +1.42% ended with mixed performances.

## ETFs

	Curr.	Close	1D	5D	30 D	YTD	Exchange
SPDR S&P 500 ETF TRUST	USD	389.80	-2.90%	-5.05%	-0.75%	-17.93%	NYSE Arca
ISHARES MSCI EMERGING MARKET	USD	41.13	-1.11%	-2.93%	3.71%	-15.80%	NYSE Arca
ISHARES IBOXX HIGH YLD CORP	USD	75.63	-1.70%	-3.83%	-1.46%	-13.08%	NYSE Arca
FINANCIAL SELECT SECTOR SPDR	USD	32.53	-3.61%	-6.71%	-2.31%	-16.70%	NYSE Arca
VANECK GOLD MINERS ETF	USD	32.57	4.76%	0.03%	2.91%	1.69%	NYSE Arca
ISHARES RUSSELL 2000 ETF	USD	178.59	-2.71%	-4.53%	4.68%	-19.72%	NYSE Arca
SPDR GOLD SHARES	USD	174.54	1.34%	1.14%	1.00%	2.09%	NYSE Arca
ISHARES 20+ YEAR TREASURY BO	USD	113.77	-0.62%	-1.95%	-3.54%	-23.23%	NASDAQ GM
INVESTCO QQQ TRUST SERIES 1	USD	288.84	-3.53%	-5.67%	-1.03%	-27.40%	NASDAQ GM
ISHARES BIOTECHNOLOGY ETF	USD	110.48	-3.07%	-5.17%	3.78%	-27.61%	NASDAQ GM
ENERGY SELECT SECTOR SPDR	USD	88.71	-1.70%	-0.89%	14.05%	59.84%	NYSE Arca
PROSHARES ULTRA VIX ST FUTUR	USD	14.79	9.15%	9.88%	-19.18%	18.99%	Cboe BZX
UNITED STATES OIL FUND LP	USD	90.13	-1.04%	0.74%	15.29%	65.80%	NYSE Arca
ISHARES MSCI BRAZIL ETF	USD	30.53	-3.02%	-13.37%	-0.46%	8.76%	NYSE Arca
SPDR S&P OIL & GAS EXP & PR	USD	162.68	-1.69%	0.66%	26.63%	69.69%	NYSE Arca
UTILITIES SELECT SECTOR SPDR	USD	71.34	-0.77%	-4.05%	0.04%	-0.34%	NYSE Arca
ISHARES US REAL ESTATE ETF	USD	92.47	-2.20%	-5.98%	-1.15%	-20.38%	NYSE Arca
SPDR S&P BIOTECH ETF	USD	67.03	-4.60%	-5.87%	6.72%	-40.13%	NYSE Arca
ISHARES IBOXX INVESTMENT GRA	USD	110.52	-0.97%	-2.36%	-1.49%	-16.60%	NYSE Arca
ISHARES JP MORGAN USD EMERGI	USD	87.22	-1.68%	-4.16%	-2.43%	-20.03%	NASDAQ GM
REAL ESTATE SELECT SECT SPDR	USD	41.17	-2.37%	-6.09%	-1.34%	-20.54%	NYSE Arca
ISHARES CHINA LARGE-CAP ETF	USD	32.74	0.06%	2.73%	15.53%	-10.50%	NYSE Arca
CONSUMER STAPLES SPDR	USD	71.92	-0.43%	-2.57%	-5.16%	-6.73%	NYSE Arca
VANECK JUNIOR GOLD MINERS	USD	40.31	4.73%	-1.37%	6.78%	-3.86%	NYSE Arca
SPDR BLOOMBERG HIGH YIELD BO	USD	93.53	-1.77%	-3.94%	-1.77%	-13.85%	NYSE Arca
VANGUARD REAL ESTATE ETF	USD	92.62	-2.22%	-5.75%	-1.00%	-20.16%	NYSE Arca
GRAYSCALE BITCOIN TRUST BTC	USD	18.68	-3.76%	-3.01%	-2.15%	-45.46%	OTC US

### USA Treasury Bonds Yield Curve (%)



Source: Bloomberg



# LIMA

## Stocks

Ticker	Currency	Price	1D*	5D*	30D*	YTD*	Frequency	Volume (US\$)	Beta	Dividend Yield (%)	Price Earning	Market Cap. (M US\$)	Economic Sector*	Index Weight
▼ ALICORC1 PE**	S/.	5.46	-0.29%	-2.93%	-2.40%	-5.70%	100.00%	349,805	0.84	15.29	12.24	1,236.88	Industrial	3.53%
- ATACOCB1 PE**	S/.	0.10	0.00%	0.00%	0.00%	-16.67%	10.00%	3	1.01	0.00	-	24.86	Mining	1.02%
▼ BACKUS1 PE**	S/.	22.11	-0.41%	2.60%	0.50%	7.85%	100.00%	14,012	0.79	15.51	7.48	7,910.56	Industrial	0.82%
▼ BAP PE**	US\$	126.00	-4.83%	-10.15%	0.70%	1.79%	100.00%	303,428	1.34	3.18	-	11,892.17	Diverse	5.82%
▲ BVN PE**	US\$	8.25	4.43%	-5.50%	13.01%	13.01%	100.00%	230,584	1.36	0.85	-	2,273.99	Mining	5.88%
▲ CASAGRC1 PE**	S/.	8.50	9.40%	6.25%	14.86%	-6.59%	90.00%	123,464	1.19	63.55	5.09	190.33	Agricultural	1.31%
▼ BBVAC1 PE**	S/.	1.69	-0.59%	5.62%	9.03%	-6.63%	100.00%	151,247	0.87	6.83	6.44	3,036.18	Finance	2.85%
- CORARE1 PE**	S/.	1.49	0.00%	2.05%	7.97%	-13.37%	80.00%	60,186	0.79	17.22	2.62	588.49	Industrial	1.72%
▲ CPACASC1 PE**	S/.	4.05	1.25%	2.27%	0.00%	-18.18%	100.00%	146,076	0.71	19.51	11.25	493.27	Industrial	2.38%
▲ CVERDEC1 PE**	US\$	28.60	0.63%	-2.39%	-8.33%	-23.18%	100.00%	273,562	0.87	6.49	7.73	10,011.60	Mining	5.25%
▲ ENGEPEC1 PE**	S/.	1.95	-1.02%	1.56%	5.41%	-5.80%	100.00%	8,709	0.82	16.09	7.27	1,241.76	Public Services	1.44%
▼ ENDISPC1**	S/.	3.60	-4.00%	-4.00%	-4.00%	-10.00%	25.00%	3,966	0.87	5.75	6.46	611.08	Public Services	0.98%
▼ FERREYC1 PE**	S/.	2.10	-0.94%	-1.87%	4.48%	2.44%	100.00%	302,950	0.97	11.36	4.02	528.12	Diverse	4.90%
▲ AENZAC1 PE**	S/.	1.10	5.77%	6.80%	-3.51%	-19.71%	100.00%	99,914	0.99	0.00	-	350.00	Diverse	4.05%
▼ IFS PE**	US\$	25.80	-0.77%	-6.18%	6.17%	-3.91%	90.00%	105,393	0.98	9.30	-	2,977.78	Diverse	7.22%
▲ INRETC1 PE**	US\$	30.00	0.03%	-3.23%	-7.12%	-14.16%	95.00%	132,510	0.70	4.57	19.72	3,262.41	Diverse	5.28%
▲ LUSURC1 PE**	S/.	14.70	0.68%	-0.68%	-1.87%	3.23%	60.00%	9,321	0.00	6.94	12.19	1,902.81	Public Services	1.81%
- MINSURI1 PE**	S/.	4.50	0.00%	-1.10%	-4.26%	13.92%	100.00%	3,294	1.09	7.85	1.70	3,448.66	Mining	3.09%
- PML PE**	US\$	0.13	0.00%	0.00%	0.00%	8.33%	25.00%	8,186	1.14	0.00	-	34.37	Mining	2.12%
▼ SCCO PE**	US\$	60.25	-2.38%	-5.31%	4.37%	-2.48%	100.00%	41,374	0.97	6.89	12.91	46,578.68	Industrial	2.12%
▲ SIDERC1 PE**	S/.	1.45	3.57%	-1.36%	3.57%	-9.38%	80.00%	13,419	0.71	43.24	3.41	269.81	Mining	2.14%
▲ TV PE**	US\$	0.52	4.00%	1.96%	-10.34%	-60.00%	85.00%	24,365	1.26	0.00	-	51.45	Industrial	1.43%
- UNACEMC1 PE**	S/.	1.56	0.00%	-3.70%	-6.02%	-35.00%	70.00%	124,988	1.07	0.00	-	753.95	Mining	2.93%
▲ VOLCABC1 PE**	S/.	0.62	3.33%	3.33%	-13.89%	3.33%	100.00%	321,031	1.13	0.00	8.44	671.86	Industrial	3.00%
▼ BROCALC1 PE**	S/.	5.90	-15.59%	-15.59%	-21.33%	13.46%	15.00%	9,418	0.00	1.91	44.01	254.85	Mining	5.90%
- RIMSEGC1 PE**	S/.	0.80	0.00%	0.00%	0.00%	-6.98%	0.00%	2,368	0.00	0.00	11.82	351.27	Finance	3.09%
- CORAREC1 PE**	US\$	2.18	0.00%	2.83%	2.83%	14.74%	45.00%	65,400	0.00	11.77	3.84	2,213.86	Mining	2.12%
- ENGIEC1 PE**	S/.	5.68	0.00%	0.00%	-3.73%	-3.07%	25.00%	4,249	0.53	0.00	15.58	907.99	Diversas	2.12%
- GBVLAC1 PE**	S/.	2.40	0.00%	-0.83%	-2.04%	-11.76%	25.00%	23,754	0.00	4.03	24.94	116.17	Diversas	2.14%

Quantity of shares: 29  
Source: Bloomberg, Economática  
\* Bloomberg Industry Classification System  
\*\* PER is used in the stock market and original currency of the instrument

Up 10  
Down 10  
Hold 9

\*Legend: Variation 1D: 1 Day; 5D: 5 Days; 1M: 1 Month; YTD: Var.% 12/31/21 to date

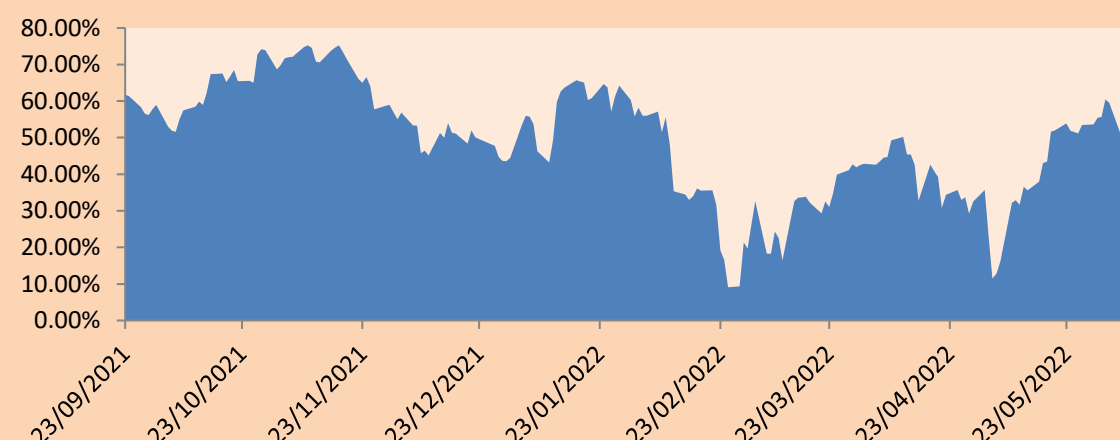
### Sectorial Indices

	Close	1D*	5D*	30D*	YTD*	Beta
▼ S&P/BVLMining	392.96	-0.25%	-3.30%	3.79%	-4.53%	1.00
▲ S&P/BVLConsumer	1,075.06	0.73%	1.94%	1.62%	-6.35%	0.51
▲ S&P/BVLIndustrials	233.80	0.15%	1.43%	2.22%	-9.40%	0.74
▼ S&P/BVLFinancials	894.03	-3.92%	-7.93%	3.47%	-1.33%	1.38
▲ S&P/BVLConstruction	238.95	0.64%	2.94%	1.27%	-15.68%	0.66
▼ S&P/BVLPublicSvcs	536.94	-0.97%	-0.20%	0.07%	-2.11%	0.10
▼ S&P/BVLElectricUtil	524.19	-0.97%	-0.20%	0.07%	-2.11%	0.10

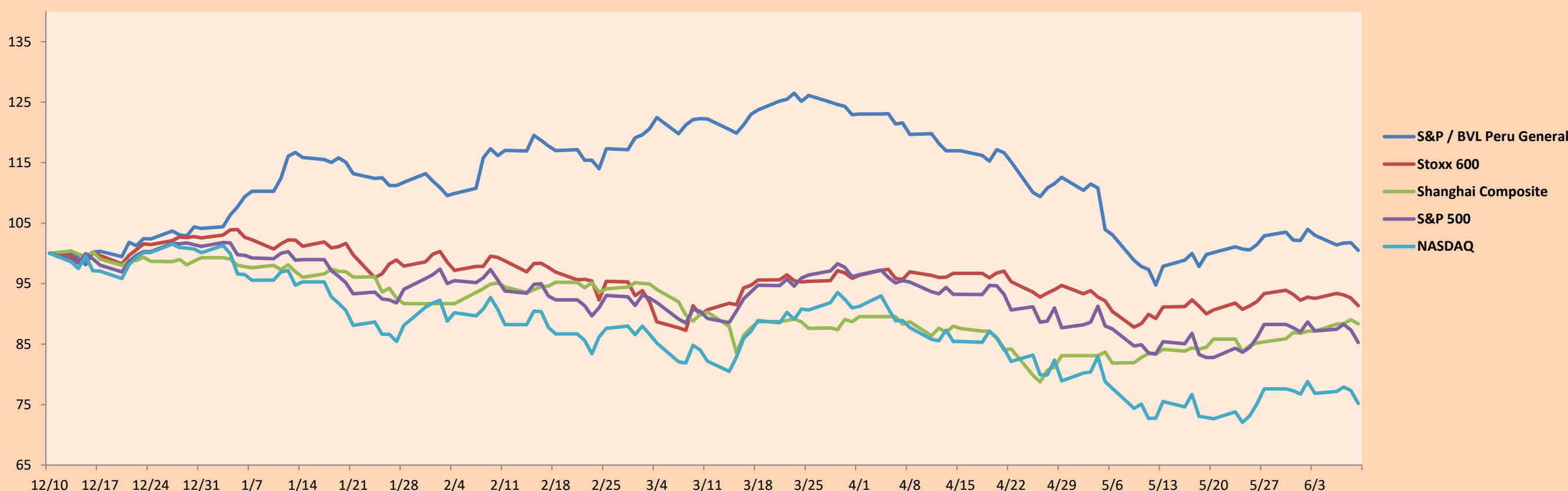
S&P/BVLConstructionTRPEN

\*Legend: Variation 1D: 1 Day; 5D: 5 Days; 1M: 1 Month; YTD: Var.% 12/31/21 to date

Correlation Graph of Returns of Mining Index against Metallic Index of London (3 months)



Indices (6 months)



Base: 10/12/21=100  
Source: Bloomberg

Capital Market Laboratory Coordinator: MS Javier Penny Pestana  
Collaboration: Sebastian Ore, Fabrizio Lavalle, Miguel Solimano y Jhonatan Cueva  
email: pulsobursatil@ulima.edu.pe  
facebook: www.facebook.com/pulsobursatil.ul

## SOVEREIGN RATING

### RISK RATINGS

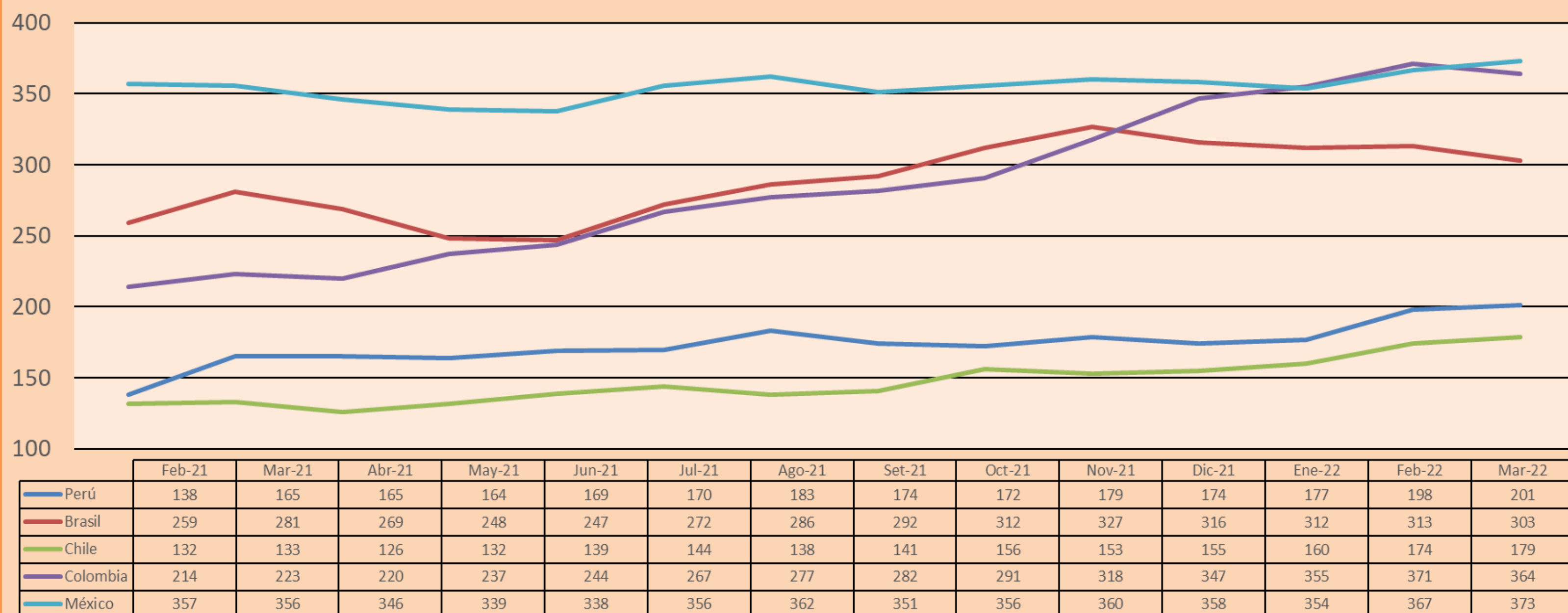
Moody's	S&P	Fitch	
Aaa	AAA	AAA	Prime
Aa1	AA+	AA+	High credit quality
Aa2	AA	AA	
Aa3	AA-	AA-	
A1	A+	A+	Medium-high grade, with low credit risk
A2	A	A	
A3	A-	A-	
Baa1	BBB+	BBB+	Moderate Credit Risk
Baa2	BBB	BBB	
Baa3	BBB-	BBB-	
Ba1	BB+	BB+	It has speculative elements and it is subject to substantial credit risk
Ba2	BB	BB	
Ba3	BB-	BB-	
B1	B+	B+	It is considered speculative and it has high credit risk
B2	B	B	
B3	B-	B-	
Caa1	CCC+	CCC	
Caa2	CCC		
Caa3	CCC-		
Ca	CC		
	C	DDD	Bad credit conditions and it is subject to high credit risk
C	D	DD	
		D	

Source: Bloomberg

Latin America Credit Rating			
Clasificadora de riesgo			
Country	Moody's	Fitch	S&P
Peru	Baa1	BBB	BBB
México	Ba2	BB-	BB-
Venezuela	C	WD	NR
Brazil	Ba2	BB-	BB-
Colombia	Baa2	BB+	BB+
Chile	A1	A-	A
Argentine	Ca	WD	CCC+
Panama	Baa2	BBB-	BBB

Source: Bloomberg

## LATAM Country Risk(bps)



Source: BCRP

Capital Market Laboratory Coordinator: MS Javier Penny Pestana  
Collaboration: Sebastian Ore, Fabrizio Lavalle, Miguel Solimano y Jhonatan Cueva  
email: pulsobursatil@ulima.edu.pe  
facebook: www.facebook.com/pulsobursatil.ul