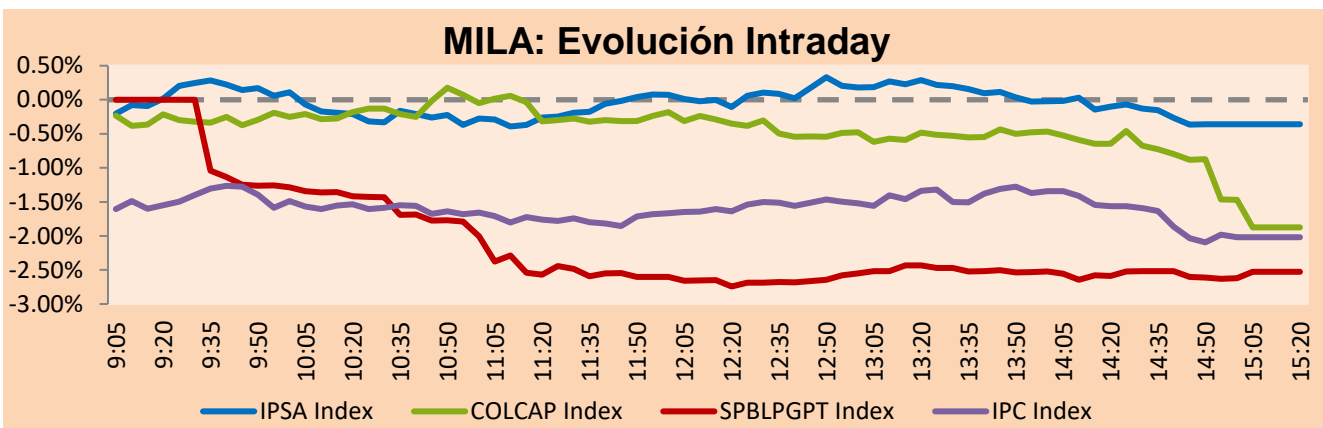


MILA

Lima, June 22, 2022

Main Indexes	Close	1 D	5 D	1 M	YTD	Cap. Burs. (US\$ bill)
▼ IPSA (Chile)	5,056.37	-0.55%	-1.27%	-1.78%	16.90%	99.11
▼ IGPA (Chile)	26,685.20	-0.30%	-1.15%	-1.42%	23.32%	114.70
▼ COLSC (Colombia)	871.94	-0.01%	-3.26%	-6.27%	-11.17%	5.64
▼ COLCAP (Colombia)	1,372.20	-1.87%	-8.59%	-9.46%	-4.85%	70.62
▼ S&P/BVL (Perú)*	19,038.61	-2.53%	-3.77%	-8.83%	-11.50%	85.51
▼ S&P/BVL SEL (Perú)	497.89	-2.46%	-4.53%	-8.34%	-13.54%	76.14
▼ S&P/BVL LIMA 25	27,096.30	-2.56%	-3.99%	-6.25%	-12.34%	84.68
▼ IPC (México)	47,144.36	-2.00%	-2.48%	-8.61%	-11.86%	299.42
▼ S&P MILA 40	461.05	-2.36%	-6.34%	-9.56%	3.64%	6,003.01

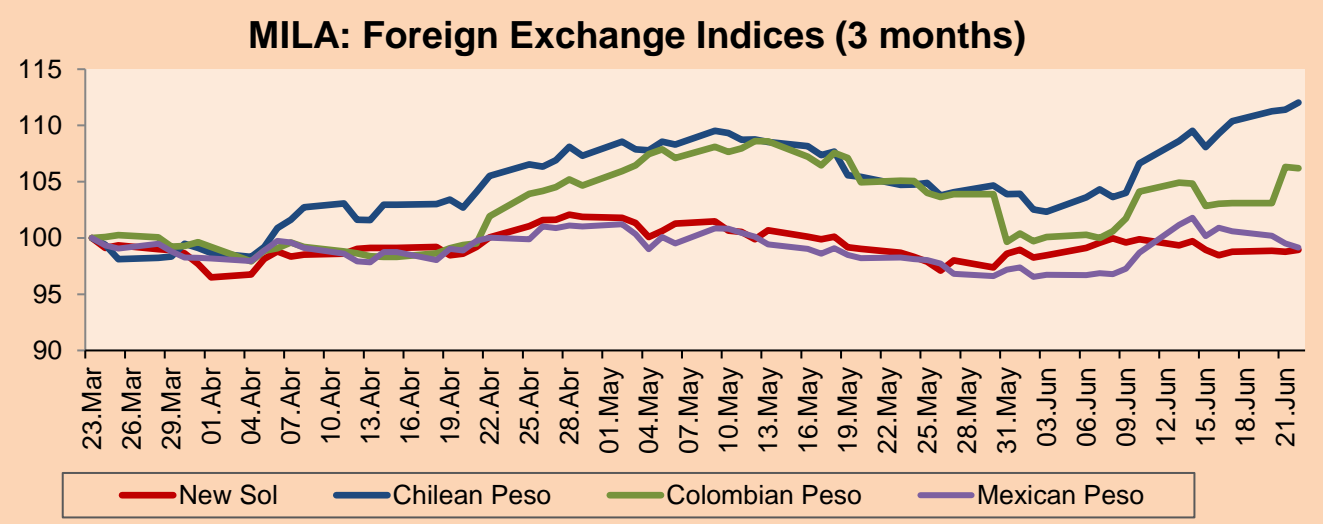
*Legend: Variation 1D: 1 day; 5D: 5 days; 1M: 1 Month; YTD: Var% 12/31/21 to date



Source: Bloomberg

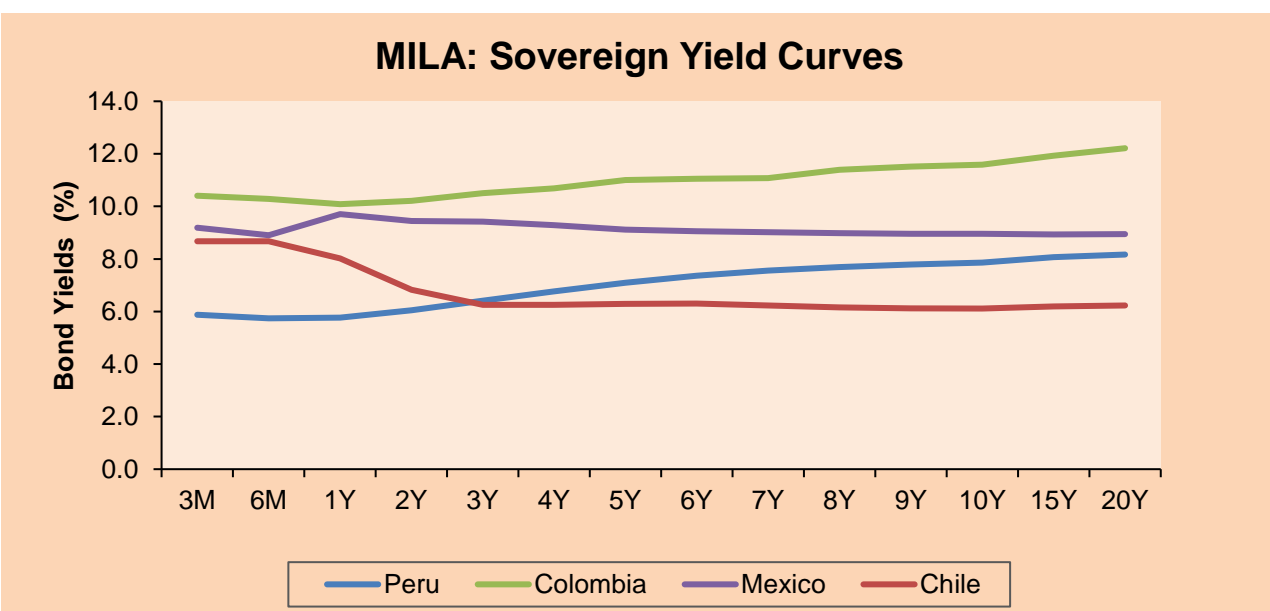
Currency	Price	1D*	5D*	30 D*	YTD*
▲ Sol (PEN)	3,727.00	0.12%	-0.02%	0.25%	-6.80%
▲ Chilean Peso (CLP)	888.47	0.55%	3.67%	6.98%	4.28%
▼ Colombian Peso (COP)	4,019.47	-0.11%	3.27%	1.05%	-1.49%
▼ Mexican Peso (MXN)	20.05	-0.37%	-1.02%	0.88%	-2.34%

*Legend: Variation 1D: 1 day; 5D: 5 days; 1M: 1 Month; YTD: Var% 12/31/21 to date



Base: 23/03/22=100
Source: Bloomberg

Fixed Income	Currency	Price	Bid Yield (%)	Ask Yield (%)	Duration
PERU 7.35 07/21/25	USD	108.04	4.60	4.44	2.69
PERU 4.125 08/25/27	USD	97.864	4.63	4.56	4.54
PERU 8.75 11/21/33	USD	127.022	5.55	5.50	7.66
PERU 6.55 03/14/37	USD	108.552	5.70	5.66	9.06
PERU 5.625 11/18/2050	USD	103.809	5.37	5.36	14.21
CHILE 2.25 10/30/22	USD	100.09	2.38	1.59	0.34
CHILE 3.125 01/21/26	USD	96.917	4.10	4.02	3.30
CHILE 3.625 10/30/42	USD	80.17	5.25	5.18	13.49
COLOM 11.85 03/09/28	USD	140.801	3.95	3.70	4.36
COLOM 10.375 01/28/33	USD	121.675	7.52	7.26	6.58
COLOM 7.375 09/18/37	USD	95.464	7.95	7.83	8.75
COLOM 6.125 01/18/41	USD	81.572	8.09	8.02	9.85
MEX 4 10/02/23	USD	81.572	8.09	8.018	9.85
MEX5.55 01/45	USD	91.916	6.25	6.20	12.07



Source: Bloomberg

Equity

Largest gains	Exchange	Currency	Price	▲%	Largest losses	Exchange	Currency	Price	▼%
GRUPO BIMBO-A	Mexico	MXN	63.49	2.90	SURAMERICANA	Colombia	COP	36000	-6.25
KIMBERLY-CLA M-A	Mexico	MXN	27.51	2.88	GRUPO NUTRESA SA	Colombia	COP	37580	-5.34
FIBRA TERRA	Mexico	MXN	26.23	1.35	GRUPO MEXICO-B	Mexico	MXN	86.46	-5.02
PROMOTORA Y OPER	Mexico	MXN	145.81	1.17	INRETAIL PERU CO	Peru	USD	27.6	-4.79
BOLSA MEXICANA	Mexico	MXN	36.20	0.92	GRUPO F BANORT-O	Mexico	MXN	113.08	-4.79

Per Turnover	Exchange	Amount (US\$)	Per Volume	Exchange	Volume
AMERICA MOVIL-L	Mexico	42,375,089	ITAU CORPBANCA	Chile	368,783,151
WALMART DE MEXIC	Mexico	37,072,776	ENEL AMERICAS SA	Chile	257,037,770
GRUPO F BANORT-O	Mexico	33,128,649	BANCO SANTANDER	Chile	255,676,452
SOQUIMICH-B	Chile	25,874,447	BANCO DE CHILE	Chile	240,864,062
ENEL AMERICAS SA	Chile	25,100,183	ENEL CHILE SA	Chile	164,015,695

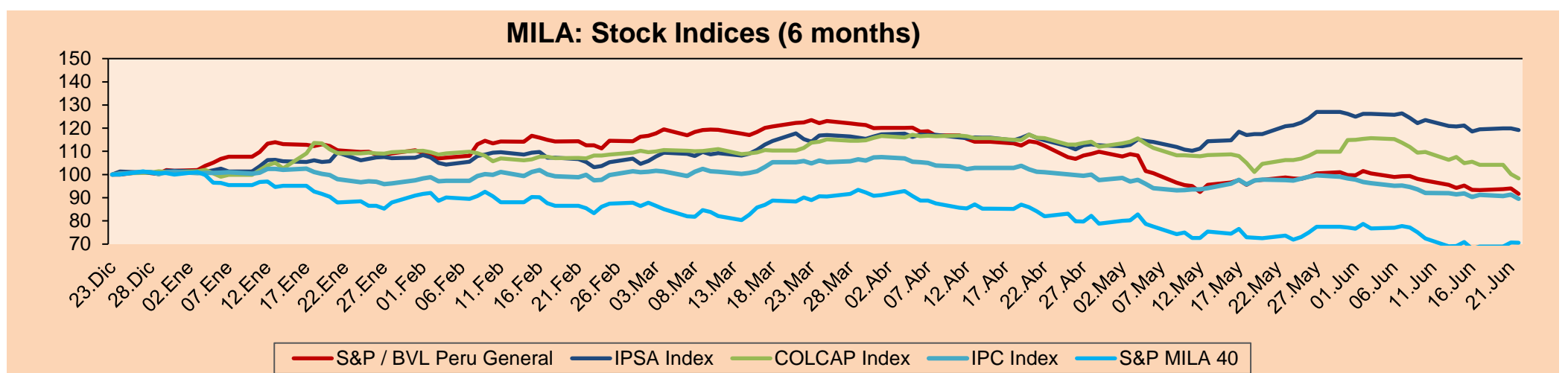
MILA

Peru: The BVL General index ended today's session with a negative result of +2.53%. The index maintains a negative annual cumulative trend of -11.53% in local currency, while the dollar-adjusted performance amounted to -5.51%. Next, the S&P/BVL Peru SEL varied by -2.46% while the S&P/BVL LIMA 25 by -2.56%. The spot PEN reached S/.3.7270. Headline: Peru's country risk rises seven points and closes at 1.84 percentage points.

Chile: The IPSA index ended the day with a positive return of +0.55%. The most benefited sectors of the day were Materials (+1.28%) and Non Basic Consumer Products (+0.36%). The best performing stocks were Cia SUD Americana de Vapores (+6.36%) and Inversiones Aguas Metropol (+1.81%). Headline: Non-agricultural real estate revaluation boosts land tax collection.

Colombia: The COLCAP index ended the session with a negative return of -1.87%. The most negatively affected sectors of the day were Energy (-10.89%) and Non-Basic Consumer Products (-3.80%). The worst performing stocks were Grupo de Inv Suramericana (-6.25%) and Grupo Nutresa SA (-5.34%). Headline: Fincen and Superfinanciera to collaborate on money laundering issues.

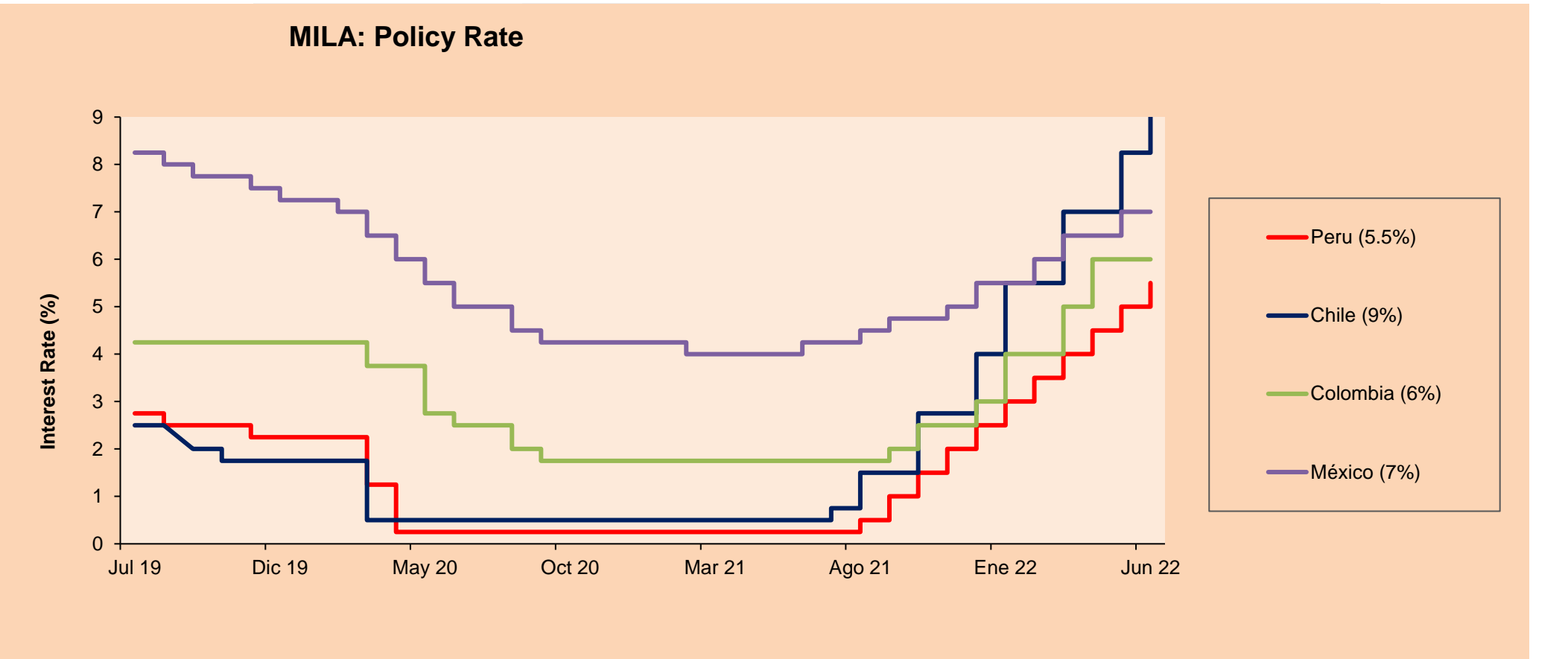
Mexico: The IPC index closed the day in positive territory, +2%. The sectors that lost the most during the day were Financials (+2.77%) and Real Estate (+0.64%). The best performing stocks were Grupo Mexico SAB de CV (-5.02%), Grupo Financiero (-4.79%). Headline: Mexico's economy 'slows down': 0.1% year-over-year growth in May, according to Inegi.



Base: 24/12/21=100
Source: Bloomberg

ETFs

ETFs	Curr.	Close	1D	5D	30 D	YTD	Exchange
▼ iShares MSCI All Peru Caped Index Fund	USD	26.93	-2.32%	-5.41%	-11.33%	-9.08%	NYSE Arca
▼ iShares MSCI All Chile Caped Index Fund	USD	25.4	-2.98%	-5.54%	-12.23%	10.00%	Cboe BZX
▼ Global X MSCI Colombia	USD	9.4476	-0.66%	-9.77%	-12.38%	-5.46%	NYSE Arca
▼ iShares MSCI Mexico Capped	USD	45.95	-0.93%	-0.80%	-9.94%	-9.19%	NYSE Arca
▼ iShares MSCI Emerging Markets	USD	39.59	-1.79%	-2.89%	-4.49%	-18.96%	NYSE Arca
▼ Vanguard FTSE Emerging Markets	USD	41.11	-1.65%	-3.50%	-3.23%	-16.88%	NYSE Arca
▼ iShares Core MSCI Emerging Markets	USD	48.46	-1.78%	-3.18%	-5.28%	-19.04%	NYSE Arca
▼ iShares JP Morgan Emerging Markets Bonds	USD	54.46	-1.34%	-1.96%	-5.11%	-13.31%	Cboe BZX
▲ Morgan Stanley Emerging Markets Domestic	USD	4.5	1.12%	-0.66%	-3.02%	-17.88%	New York



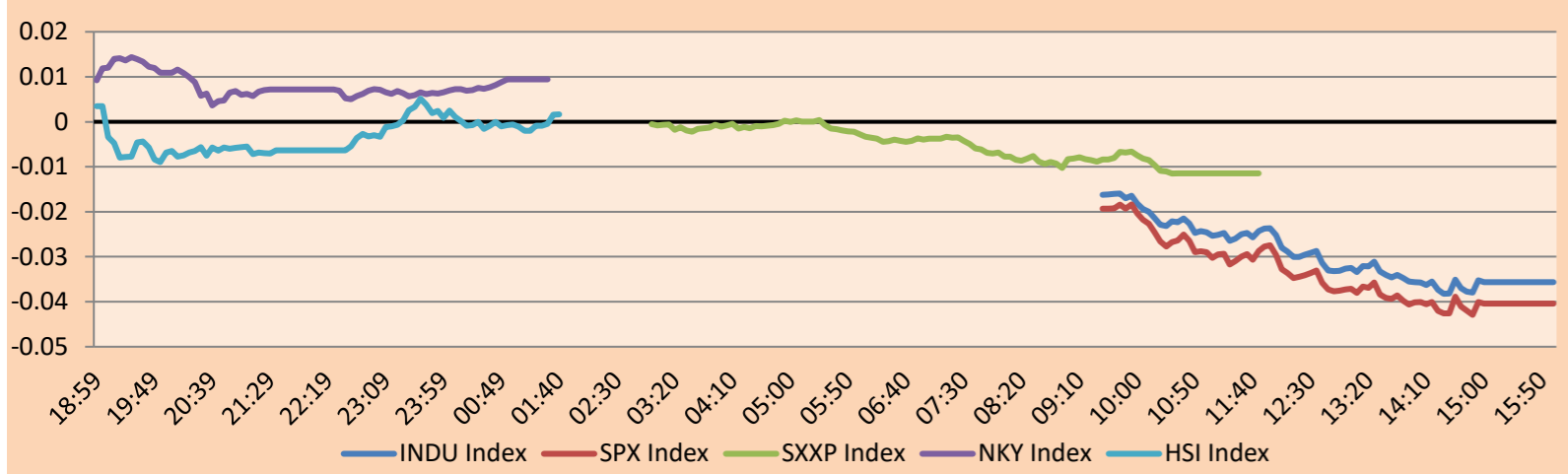
Source: Bloomberg

WORLD

Main Indices	Close	1 D*	5 D*	1 M*	YTD*	Market Cap. (US\$ Mill.)
▼ Dow Jones (USA)	30,483.13	-0.15%	0.39%	-4.46%	-16.18%	9,526,732
▼ Standard & Poor's 500 (EEUU)	3,759.89	-0.13%	0.65%	-5.06%	-20.84%	33,038,337
▼ NASDAQ Composite (USA)	11,053.08	-0.15%	2.08%	-3.21%	-28.63%	18,859,943
▼ Stoxx EUROPE 600 (Europe)	405.74	-0.70%	-1.78%	-7.82%	-17.51%	10,583,278
▼ DAX (Germany)	13,144.28	-1.11%	-2.53%	-8.91%	-18.71%	1,298,150
▼ FTSE 100 (United Kingdom)	7,089.22	-0.88%	-2.53%	-6.56%	-4.93%	1,593,136
▼ CAC 40 (France)	5,916.63	-0.81%	-1.88%	-7.48%	-17.75%	1,797,578
▼ IBEX 35 (Spain)	8,145.40	-1.10%	-0.36%	-6.02%	-6.97%	512,473
▼ MSCI AC Asia Pacific Index	156.39	-1.49%	-1.86%	-5.22%	-19.02%	21,491,570
▼ HANG SENG (Hong kong)	21,008.34	-2.56%	-1.41%	5.78%	-9.08%	3,431,565
▼ SHANGHAI SE Comp. (China)	3,267.20	-1.20%	-1.16%	8.12%	-8.78%	6,751,265
▼ NIKKEI 225 (Japan)	26,149.55	-0.37%	-0.67%	-2.16%	-9.10%	3,319,050
▼ S&P / ASX 200 (Australia)	6,508.54	-0.23%	-1.40%	-8.42%	-12.31%	1,492,007
▼ KOSPI (South Korea)	2,342.81	-2.74%	-4.27%	-11.19%	-22.28%	1,351,945

*Legend: Variation 1D: 1 Day; 5D: 5 Days; 1M: 1 Month; YTD: Var.% 12/31/21 to date

Mercado Evolución Intraday (var %)

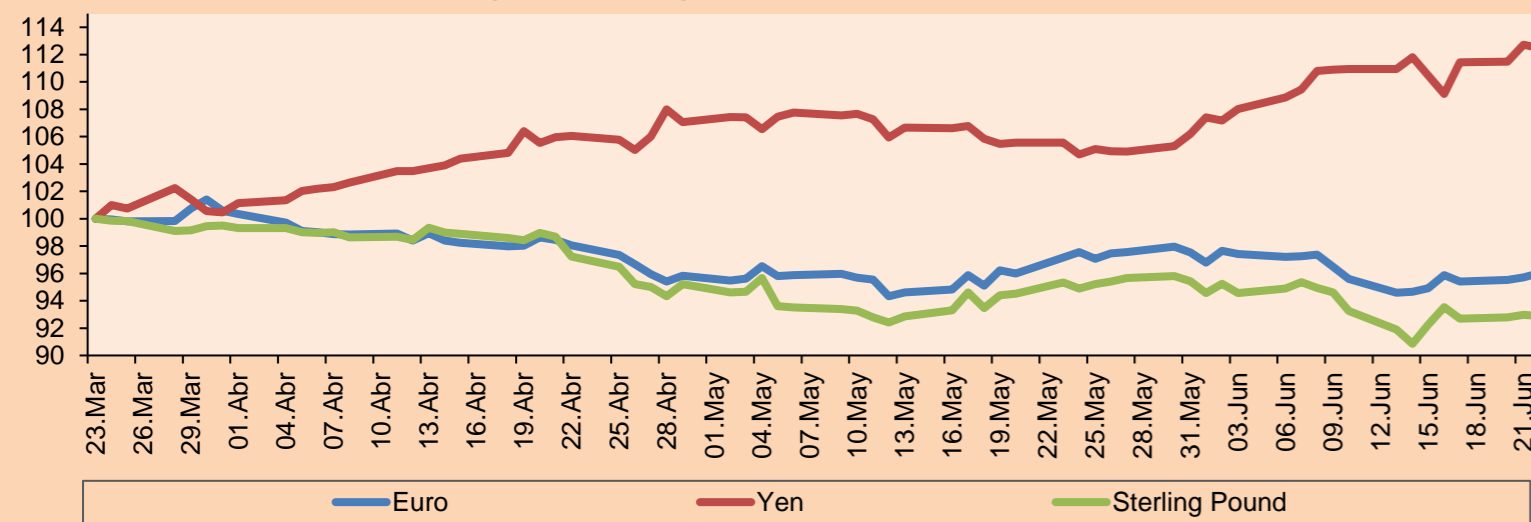


Source: Bloomberg

Currency	Price	1 D*	5 D*	1 M*	YTD*
▲ Euro	1.0566	0.31%	1.17%	-1.17%	-7.07%
▼ Yen	136.2600	-0.23%	1.81%	6.54%	18.40%
▼ Sterling Pound	1.2266	-0.09%	0.71%	-2.56%	-9.36%
▲ Yuan	6.7023	0.19%	-0.19%	0.79%	5.45%
- Hong Kong Dollar	7.8500	0.00%	0.00%	0.01%	0.68%
▲ Brazilian Real	5.1953	1.35%	2.77%	7.92%	-6.82%
▲ Argentine Peso	123.8601	0.15%	0.94%	4.13%	20.56%

*Legend: Variation 1D: 1 Day; 5D: 5 Days; 1M: 1 Month; YTD: Var.% 12/31/21 to date

Foreign Exchange Indices (3 months)

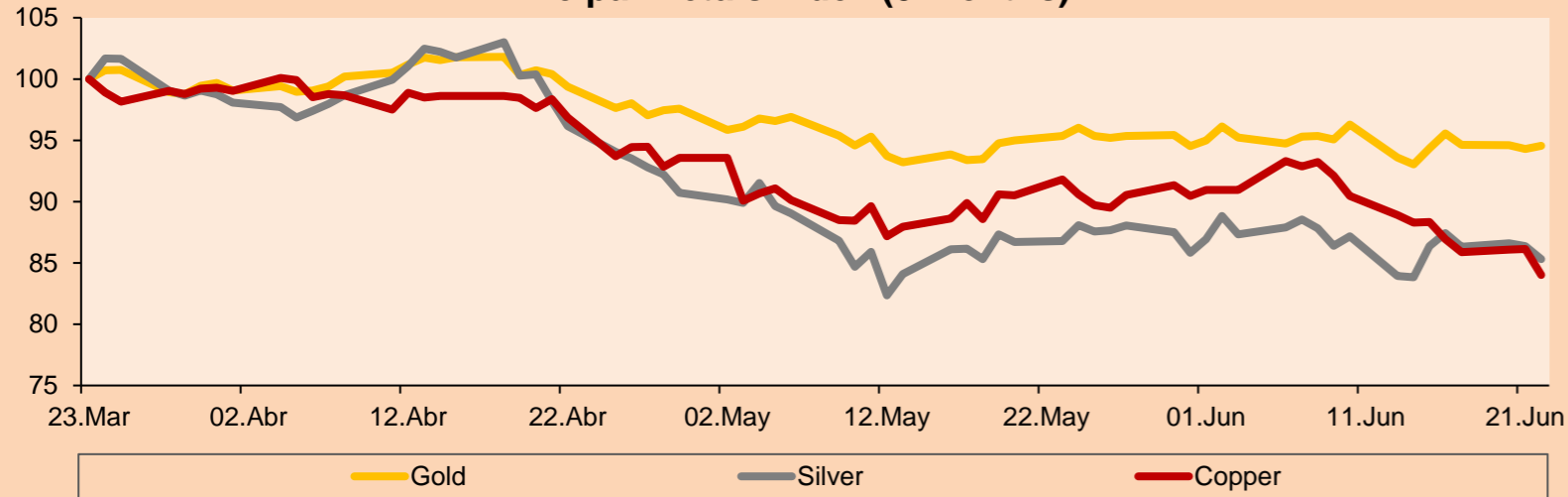


Base: 23/03/22=100
Source: Bloomberg

Commodities	Close	1 D*	5 D*	1 M*	YTD*
▲ Oro (US\$ Oz. T) (LME)	1,837.72	0.26%	0.21%	-0.86%	0.47%
▼ Plata (US\$ Oz. T) (LME)	21.42	-1.24%	-1.24%	-1.72%	-8.11%
▼ Cobre (US\$ TM) (LME)	8,773.50	-2.47%	-4.89%	-8.50%	-9.93%
▼ Zinc (US\$ TM) (LME)	3,696.50	-0.18%	-0.05%	-2.74%	2.97%
▼ Petróleo WTI (US\$ Barril) (NYM)	106.19	-3.04%	-6.10%	-1.26%	47.14%
▼ Estaño (US\$ TM) (LME)	29,279.00	-7.22%	-10.46%	-16.04%	-25.64%
▼ Plomo (US\$ TM) (LME)	2,020.25	-2.05%	-2.23%	-8.05%	-13.58%
▼ Azúcar #11 (US\$ Libra) (NYB-ICE)	18.49	-1.54%	-0.43%	-7.23%	0.71%
▼ Cacao (US\$ TM) (NYB-ICE)	2,452.00	-0.65%	3.16%	-0.85%	-4.55%
▲ Café Arábica (US\$ TM) (NYB-ICE)	236.40	1.74%	3.46%	9.47%	5.30%

*Leyenda: Variación 1D: 1 Día; 5D: 5 Días; 1M: 1 Mes; YTD: Var.% 31/12/21 a la fecha

Principal Metals Index (3 months)



Base: 23/03/22=100
Source: Bloomberg

Equity

Germany (Stocks from DAX Index)

Largest gains	Curr.	Price	▲%	Exchange	Largest losses	Curr.	Price	▼%	Exchange
EOAN GY	EUR	8.85	1.40	Xetra	1COV GY	EUR	34.14	-5.48	Xetra
BEI GY	EUR	95.26	1.25	Xetra	BNR GY	EUR	62.9	-4.17	Xetra
DB1 GY	EUR	155.95	0.78	Xetra	DTG GY	EUR	26.14	-3.84	Xetra
DPW GY	EUR	35.405	0.45	Xetra	AIR GY	EUR	93.02	-3.16	Xetra

Europe (Stocks from STOXX EUROPE 600)

Largest gains	Curr.	Price	▲%	Exchange	Largest losses	Curr.	Price	▼%	Exchange
UN01 GY	EUR	19.55	5.96	Xetra	MT NA	EUR	22.43	-9.56	EN Amsterdam
DRX LN	GBp	671	5.17	Londres	UMI BB	EUR	34.87	-8.02	EN Brussels
WISE LN	GBp	357.2	4.97	Londres	TKA GY	EUR	6.46	-7.98	Xetra
CNA LN	GBp	83.54	4.58	Londres	MOWI NO	NOK	219.7	-7.26	Oslo

Global Overview:

United States:

The US market closes with negative yields. The DOW JONES index closed in negative territory, in a scenario where Jerome Powell explicitly admitted that raising interest rates could push the US economy into a recession, stating that one is possible and calling a soft landing "very difficult". The S&P500 index also ended with a significantly negative performance, in a scenario where President Joe Biden, asked Congress to suspend the federal gas tax, this temporary exemption of 18 cents on gas and 24 cents per gallon on Diesel for the next 90 days could generate relief for families, stated the President. Finally, the NASDAQ index obtained negative results, in a context where China and India are buying more Russian oil than expected by the United States, easing the supply crisis in the global markets and this could potentially lead to a decrease in the price. In fact, the forward price of a barrel of Texas crude oil is \$105, which at the beginning of the month was \$122. Thus, DOW JONES -0.15%; S&P 500 -0.13%; NASDAQ -0.15% ended the day with negative results.

Europe:

The main European indices ended the session with negative returns. The pan-European STOXX 600 index closed lower on Wednesday, as regional investors reacted adversely to Jerome Powell's remarks in the US Senate about remaining committed to reducing inflation in the country. Equity markets also continue to be affected by the latest interest rate hike, with Powell confirming that 50-75 basis point increases are still on the table. The FTSE 100 also closed with yields in negative territory, due to weaker market sentiment generated by expectations of slowing economic growth following May's inflation data and tighter BoE monetary policy. Turning to the German market, the DAX index closed significantly negative, as energy and metals stocks weighed on market returns. Specifically, the assets that fell the most were Voestalpine and ArcelorMittal by -10% and -13%, respectively. Finally, the French market also closed lower due to the poor performance of cyclical stocks such as Carrefour (-7.16%), Airbus Group (-3.25%) and Saint Gobain (-2.98%). This amid statements from European Central Bank officials, who mentioned that they will do whatever it takes to recover the 2% inflation rate by 2024. Thus, FTSE 100 -0.88%; CAC 40 -0.81%; DAX -1.11%; STOXX 600 -0.70% ended with negative performances.

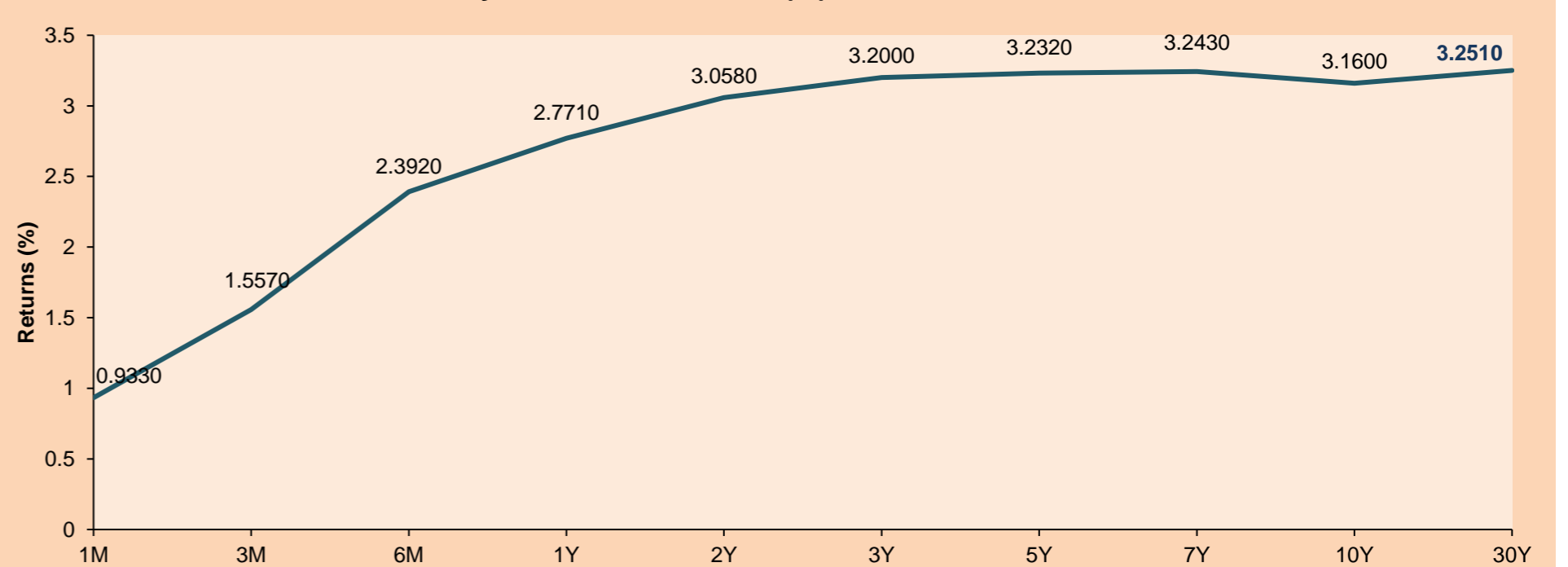
Asia:

Major Asian indices closed mostly with negative returns, where fears over central bank decisions are weighing on markets. The Chinese market closed in negative territory, as global monetary tightening and a weaker outlook for the domestic economy in light of the COVID-19 turmoil weighed on sentiment. The Hang Seng index ended lower, being dragged down by concerns over the global growth outlook, persistently high inflation and tightening financial conditions. The South Korean market fell this session as foreign investors continued to sell stocks amid recession worries. US\$147.57 million worth of shares were sold in the main market, extending its selling streak to a fourth consecutive session. The Japanese market closed in negative territory, where, until U.S. inflation has peaked, the risk that a very aggressive tightening of Fed policy could trigger a recession will keep markets under pressure. The Australian market ended lower in a context where the governor of the Reserve Bank of Australia downplayed the possibility of a 75 basis point interest rate hike. Thus, NIKKEI -0.37%; HANG SENG -2.56%; CSI 300 -1.27%; S&P/ASX 200 -0.23%; KOSPI -2.74%; SHANGAI COMPOSITE -1.20% ended with negative performances.

ETFs

	Curr.	Close	1D	5D	30 D	YTD	Exchange
SPDR S&P 500 ETF TRUST	USD	374.39	-0.18%	-1.27%	-5.68%	-21.17%	NYSE Arca
ISHARES MSCI EMERGING MARKET	USD	39.59	-1.79%	-2.89%	-4.49%	-18.96%	NYSE Arca
ISHARES IBOXX HIGH YLD CORP	USD	73.98	-0.03%	-1.37%	-3.62%	-14.98%	NYSE Arca
FINANCIAL SELECT SECTOR SPDR	USD	31.31	-0.22%	-1.04%	-7.88%	-19.82%	NYSE Arca
VANECK GOLD MINERS ETF	USD	30.08	-1.38%	-0.36%	-6.73%	-6.09%	NYSE Arca
ISHARES RUSSELL 2000 ETF	USD	167.82	-0.19%	-2.35%	-5.83%	-24.56%	NYSE Arca
SPDR GOLD SHARES	USD	171.31	0.40%	0.32%	-0.88%	0.20%	NYSE Arca
ISHARES 20+ YEAR TREASURY BO	USD	113.21	2.75%	2.14%	-2.87%	-23.60%	NASDAQ GM
INVESCO QQQ TRUST SERIES 1	USD	280.67	-0.15%	-0.75%	-4.36%	-29.45%	NASDAQ GM
ISHARES BIOTECHNOLOGY ETF	USD	113.25	1.23%	4.22%	-2.74%	-25.80%	NASDAQ GM
ENERGY SELECT SECTOR SPDR	USD	73.38	-4.00%	-10.92%	-12.57%	32.22%	NYSE Arca
PROSHARES ULTRA VIX ST FUTUR	USD	14.85	-5.89%	-4.50%	-5.65%	19.47%	Cboe BZX
UNITED STATES OIL FUND LP	USD	80.88	-3.77%	-6.96%	-1.33%	48.79%	NYSE Arca
ISHARES MSCI BRAZIL ETF	USD	27.74	-0.54%	-6.22%	-20.38%	-1.18%	NYSE Arca
SPDR S&P OIL & GAS EXP & PR	USD	126.00	-5.99%	-15.52%	-11.51%	31.43%	NYSE Arca
UTILITIES SELECT SECTOR SPDR	USD	66.27	1.05%	-0.75%	-8.72%	-7.42%	NYSE Arca
ISHARES US REAL ESTATE ETF	USD	90.31	1.44%	1.26%	-5.97%	-22.24%	NYSE Arca
SPDR S&P BIOTECH ETF	USD	71.79	2.51%	9.30%	2.35%	-35.88%	NYSE Arca
ISHARES IBOXX INVESTMENT GRA	USD	109.12	0.73%	0.03%	-2.59%	-17.66%	NYSE Arca
ISHARES JP MORGAN USD EMERGI	USD	85.81	0.15%	-1.83%	-4.33%	-21.32%	NASDAQ GM
REAL ESTATE SELECT SECT SPDR	USD	40.13	1.62%	0.83%	-6.46%	-22.54%	NYSE Arca
ISHARES CHINA LARGE-CAP ETF	USD	32.44	-1.79%	-1.46%	6.89%	-11.32%	NYSE Arca
CONSUMER STAPLES SPDR	USD	70.09	-0.07%	0.69%	-2.87%	-9.10%	NYSE Arca
VANECK JUNIOR GOLD MINERS	USD	35.99	-2.07%	-2.83%	-8.77%	-14.17%	NYSE Arca
SPDR BLOOMBERG HIGH YIELD BO	USD	91.38	0.05%	-1.38%	-3.79%	-15.83%	NYSE Arca
VANGUARD REAL ESTATE ETF	USD	90.05	1.27%	0.74%	-6.13%	-22.38%	NYSE Arca
GRAYSCALE BITCOIN TRUST BTC	USD	12.96	-4.07%	-7.82%	-29.72%	-62.16%	OTC US

USA Treasury Bonds Yield Curve (%)



Source: Bloomberg

LIMA

Stocks

Ticker	Currency	Price	1D*	5D*	30D*	YTD*	Frequency	Volume (US\$)	Beta	Dividend Yield (%)	Price Earning	Market Cap. (M US\$)	Economic Sector*	Index Weight
▼ ALICORC1 PE**	S/.	5.25	-0.86%	-4.02%	-6.27%	-11.17%	100.00%	474,822	0.82	15.90	11.76	1,200.72	Industrial	3.53%
▼ ATACOB1 PE**	S/.	0.09	-10.00%	-10.00%	-10.00%	-25.00%	10.00%	1,704	1.01	0.00	-	25.03	Mining	1.02%
▼ BACKUS1 PE**	S/.	21.80	-1.80%	-3.11%	-0.91%	6.34%	100.00%	1,089,357	0.78	15.74	7.38	7,876.32	Industrial	0.82%
▼ BAP PE**	US\$	124.50	-2.35%	-2.60%	-10.75%	0.58%	100.00%	43,058	1.33	3.21	-	9,900.24	Diverse	5.82%
▼ BVN PE**	US\$	7.43	-1.59%	-2.88%	-12.90%	1.78%	100.00%	144,649	1.35	0.94	-	2,047.96	Mining	5.88%
▼ CASAGRC1 PE**	S/.	7.46	-2.74%	-9.02%	6.42%	-18.02%	90.00%	107,025	1.14	72.41	4.49	168.60	Agricultural	1.31%
▲ BBVAC1 PE**	S/.	1.64	0.61%	-2.38%	9.33%	-9.39%	100.00%	191,919	0.81	7.03	6.06	2,973.94	Finance	2.85%
▼ CORARE1 PE**	S/.	1.38	-4.17%	-4.83%	-4.83%	-19.77%	80.00%	113,268	0.79	18.59	2.34	588.62	Industrial	1.72%
▼ CPACASC1 PE**	S/.	3.75	-5.06%	-6.25%	-6.25%	-24.24%	100.00%	217,232	0.73	21.07	9.83	462.26	Industrial	2.38%
▼ CVERDEC1 PE**	US\$	29.00	-1.69%	3.57%	-3.33%	-22.11%	100.00%	466,842	0.88	6.40	7.57	10,151.62	Mining	5.25%
- ENGEPEC1 PE**	S/.	2.00	0.00%	2.56%	11.11%	-3.38%	100.00%	30,796	0.80	15.69	7.46	1,285.52	Public Services	1.44%
- ENDISPC1**	S/.	3.80	0.00%	5.56%	2.70%	-5.00%	25.00%	11,488	0.85	0.00	6.82	651.07	Public Services	0.98%
- FERREYC1 PE**	S/.	2.10	0.00%	-0.94%	0.00%	2.44%	100.00%	439,623	0.96	11.36	3.92	533.06	Diverse	4.90%
▼ AENZAC1 PE**	S/.	0.94	-3.09%	-11.32%	-8.74%	-31.39%	100.00%	152,060	0.92	0.00	-	301.89	Diverse	4.05%
▼ IFS PE**	US\$	23.50	-4.86%	-10.82%	-10.17%	-12.48%	90.00%	101,930	1.01	10.21	-	2,712.32	Diverse	7.22%
▼ INRETC1 PE**	US\$	27.60	-4.79%	-5.80%	-9.51%	-21.03%	95.00%	371,731	0.73	4.97	17.54	3,001.41	Diverse	5.28%
▼ LUSURC1 PE**	S/.	15.80	-1.25%	5.19%	13.67%	10.96%	60.00%	6,948	0.00	6.46	13.10	2,064.35	Public Services	1.81%
▼ MINSUR1 PE**	S/.	4.07	-5.35%	-7.08%	-8.54%	3.04%	100.00%	206,472	1.09	8.68	1.50	3,148.33	Mining	3.09%
- PML PE**	US\$	0.13	0.00%	0.00%	18.18%	8.33%	25.00%	1,300	1.13	0.00	-	34.37	Mining	2.12%
▼ SCCO PE**	US\$	53.00	-4.73%	-8.59%	-12.25%	-14.21%	100.00%	55,134	0.98	7.83	10.93	40,973.77	Industrial	2.12%
▼ SIDERC1 PE**	S/.	1.38	-1.43%	-4.17%	0.00%	-13.75%	80.00%	27,098	0.71	45.43	3.24	259.19	Mining	2.14%
▼ TV PE**	US\$	0.42	-6.67%	-14.29%	-19.23%	-67.69%	85.00%	8,624	1.29	0.00	-	41.56	Industrial	1.43%
▼ UNACEMC1 PE**	S/.	1.54	-3.75%	-6.67%	-1.28%	-35.83%	70.00%	341,288	1.05	7.14	-	751.25	Mining	2.93%
▼ VOLCABC1 PE**	S/.	0.57	-3.39%	-6.56%	-8.06%	-5.00%	100.00%	328,058	1.14	0.00	7.52	623.46	Industrial	3.00%
▼ BROCALC1 PE**	S/.	5.50	-6.78%	-6.78%	-21.43%	5.77%	15.00%	1,704	0.00	2.05	39.71	239.80	Mining	5.90%
##### RIMSEGC1 PE**	S/.	#N/A N/A	#¡VALOR!	#¡VALOR!	0.00%	#¡VALOR!	0.00%	445	0.00	0.00	11.82	#¡VALOR!	Finance	3.09%
- CORAREC1 PE**	US\$	2.18	0.00%	0.00%	2.83%	14.74%	45.00%	109,000	0.00	11.77	3.84	2,193.79	Mining	2.12%
- ENGIEC1 PE**	S/.	5.60	0.00%	0.54%	-1.41%	-4.44%	25.00%	4,515	0.53	0.00	15.42	903.59	Diversas	2.12%
- GBVLAC1 PE**	S/.	2.40	0.00%	0.00%	-0.83%	-11.76%	25.00%	831	0.00	0.00	23.80	117.26	Diversas	2.14%

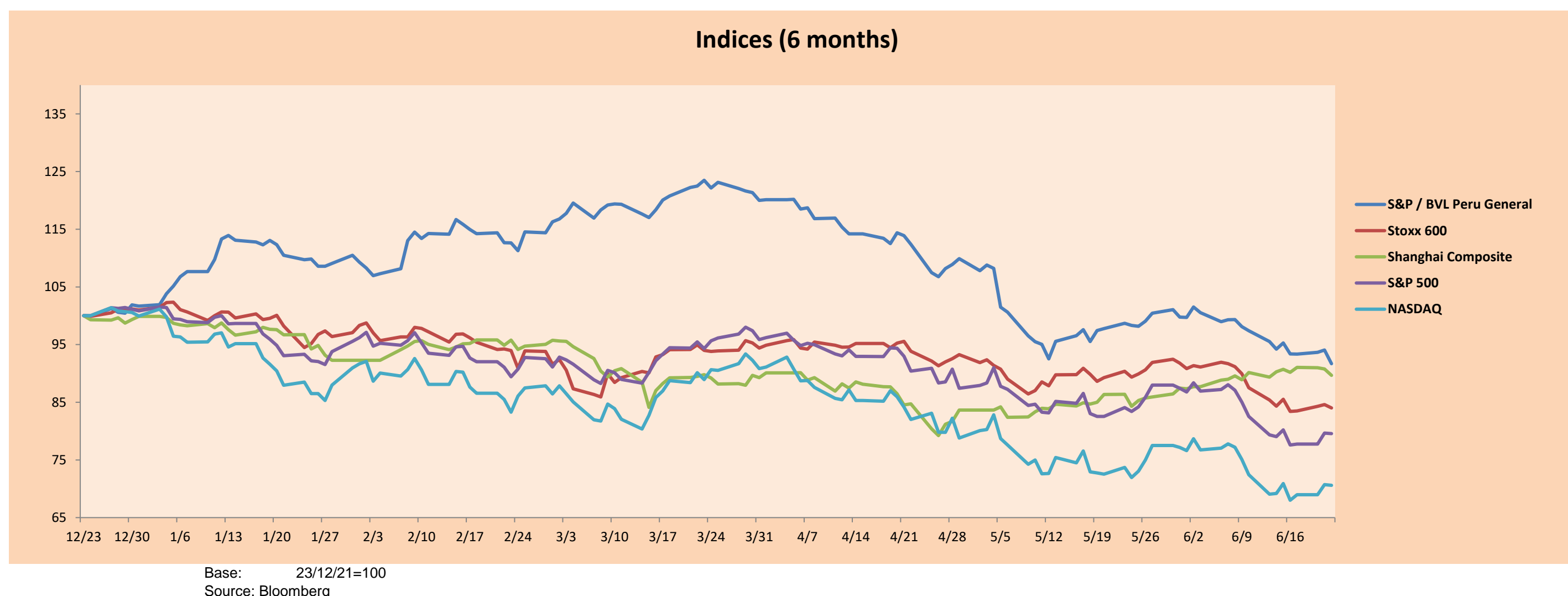
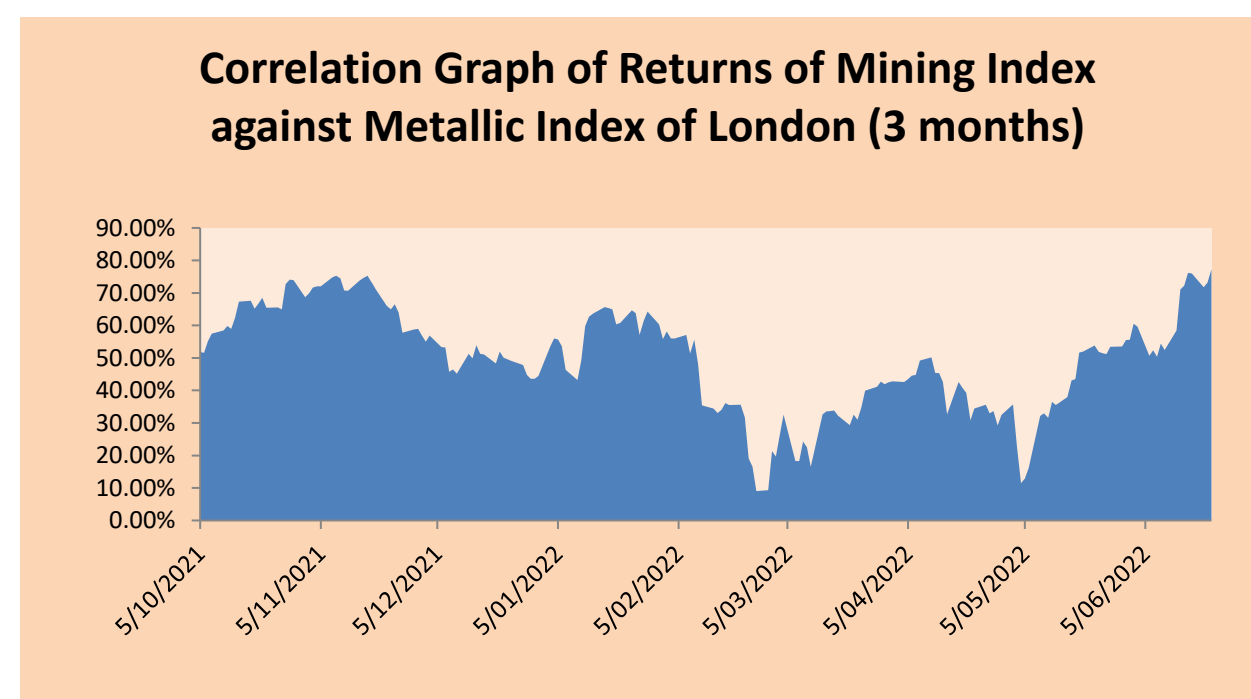
Quantity of shares: 28
 Source: Bloomberg, Economática
 * Bloomberg Industry Classification System
 ** PER is used in the stock market and original currency of the instrument
 *Legend: Variation 1D: 1 Day; 5D: 5 Days, 1M: 1 Month; YTD: Var.% 12/31/21 to date

Sectorial Indices

	Close	1D*	5D*	30D*	YTD*	Beta
▼ S&P/BVLMining	349.92	-3.62%	-6.03%	-10.96%	-14.99%	1.00
▼ S&P/BVLConsumer	1,011.91	-3.19%	-4.22%	-1.47%	-11.85%	0.51
▼ S&P/BVLIndustrials	222.99	-2.12%	-4.15%	-1.78%	-13.59%	0.75
▼ S&P/BVLFinancials	868.05	-2.30%	-3.05%	-9.82%	-4.20%	1.38
▼ S&P/BVLConstruction	223.09	-3.07%	-5.57%	-2.59%	-21.28%	0.67
- S&P/BVLPublicSvcs	541.92	0.00%	1.98%	2.90%	-1.20%	0.10
- S&P/BVLElectricUtil	529.05	0.00%	1.98%	2.90%	-1.20%	0.10

S&P/BVLConstructionTRPEN

*Legend: Variation 1D: 1 Day; 5D: 5 Days, 1M: 1 Month; YTD: Var.% 12/31/21 to date



Base: 23/12/21=100
 Source: Bloomberg

Capital Market Laboratory Coordinator: MS Javier Penny Pestana
 Collaboration: Sebastian Ore, Fabrizio Lavalle, Miguel Solimano y Jhonatan Cueva
 email: pulsobursatil@ulima.edu.pe
 facebook: www.facebook.com/pulsobursatil.ul

SOVEREIGN RATING

RISK RATINGS

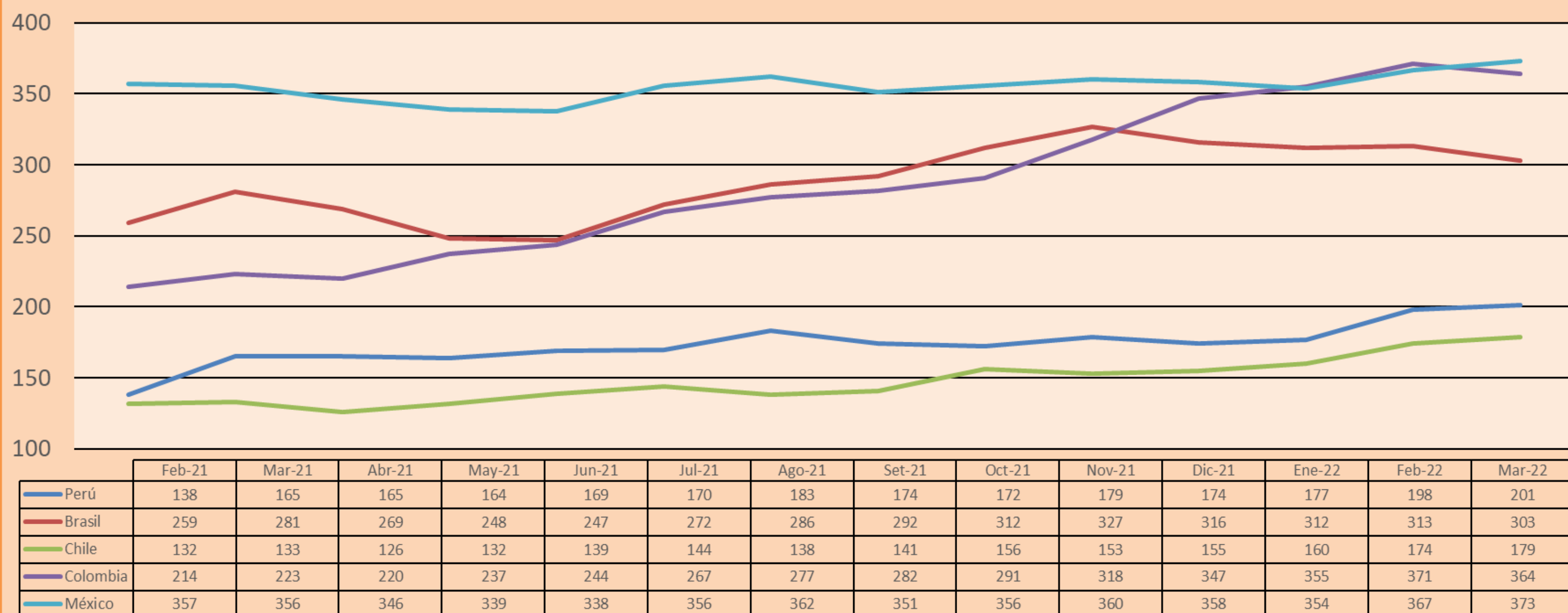
Moody's	S&P	Fitch	
Aaa	AAA	AAA	Prime
Aa1	AA+	AA+	High credit quality
Aa2	AA	AA	
Aa3	AA-	AA-	
A1	A+	A+	Medium-high grade, with low credit risk
A2	A	A	
A3	A-	A-	
Baa1	BBB+	BBB+	Moderate Credit Risk
Baa2	BBB	BBB	
Baa3	BBB-	BBB-	
Ba1	BB+	BB+	It has speculative elements and it is subject to substantial credit risk
Ba2	BB	BB	
Ba3	BB-	BB-	
B1	B+	B+	It is considered speculative and it has high credit risk
B2	B	B	
B3	B-	B-	
Caa1	CCC+	CCC	
Caa2	CCC	CCC	
Caa3	CCC-	CCC	
Ca	CC	CC	Very close to default or in default
C	C	CC	
C	D	DD	

Source: Bloomberg

Latin America Credit Rating			
Clasificadora de riesgo			
Country	Moody's	Fitch	S&P
Peru	Baa1	BBB	BBB
México	Ba2	BB-	BB-
Venezuela	C	WD	NR
Brazil	Ba2	BB-	BB-
Colombia	Baa2	BB+	BB+
Chile	A1	A-	A
Argentine	Ca	WD	CCC+
Panama	Baa2	BBB-	BBB

Source: Bloomberg

LATAM Country Risk(bps)



Source: BCRP

Capital Market Laboratory Coordinator: MS Javier Penny Pestana
Collaboration: Sebastian Ore, Fabrizio Lavalle, Miguel Solimano y Jhonatan Cueva
email: pulsobursatil@ulima.edu.pe
facebook: www.facebook.com/pulsobursatil.ul