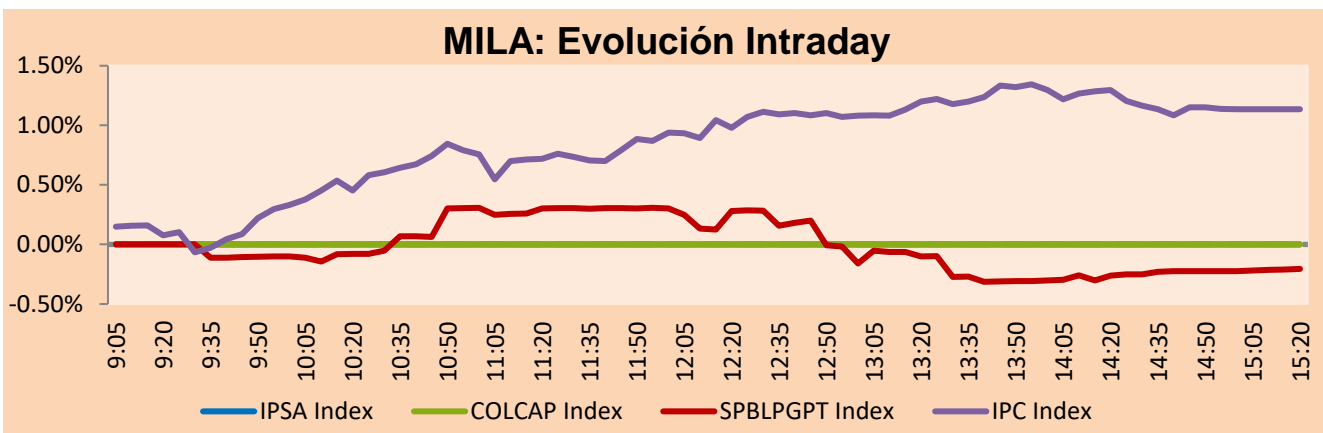


MILA

Lima, June 27, 2022

Main Indexes	Close	1 D	5 D	1 M	YTD	Cap. Burs. (US\$ bill)
▲ IPSA (Chile)	4,983.66	0.99%	-0.91%	-7.10%	16.15%	93.79
▲ IGPA (Chile)	26,439.15	1.52%	0.18%	-7.35%	22.85%	108.41
▲ COLSC (Colombia)	862.62	0.10%	-4.30%	-5.64%	-10.89%	5.45
▲ COLCAP (Colombia)	1,365.96	2.03%	-7.28%	-10.27%	-2.55%	66.87
▼ S&P/BVL (Perú)*	18,815.01	-0.21%	-3.27%	-9.28%	-10.36%	83.49
▼ S&P/BVL SEL (Perú)	489.13	-0.12%	-4.67%	-9.81%	-12.94%	74.46
▼ S&P/BVL LIMA 25	26,695.25	-0.12%	-4.54%	-7.60%	-11.66%	82.69
▲ IPC (México)	48,294.83	1.16%	1.08%	-7.52%	-8.92%	307.34
▼ S&P MILA 40	445.76	-0.06%	-7.02%	-16.18%	0.20%	6,122.99

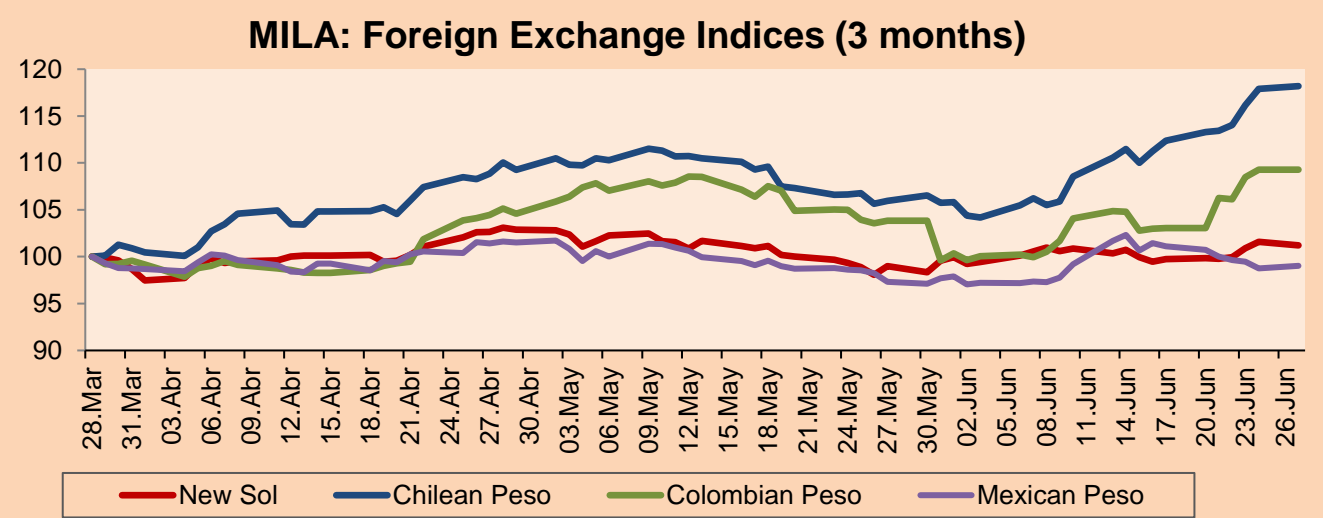
*Legend: Variation 1D: 1 day; 5D: 5 days; 1M: 1 Month; YTD: Var% 12/31/21 to date



Source: Bloomberg

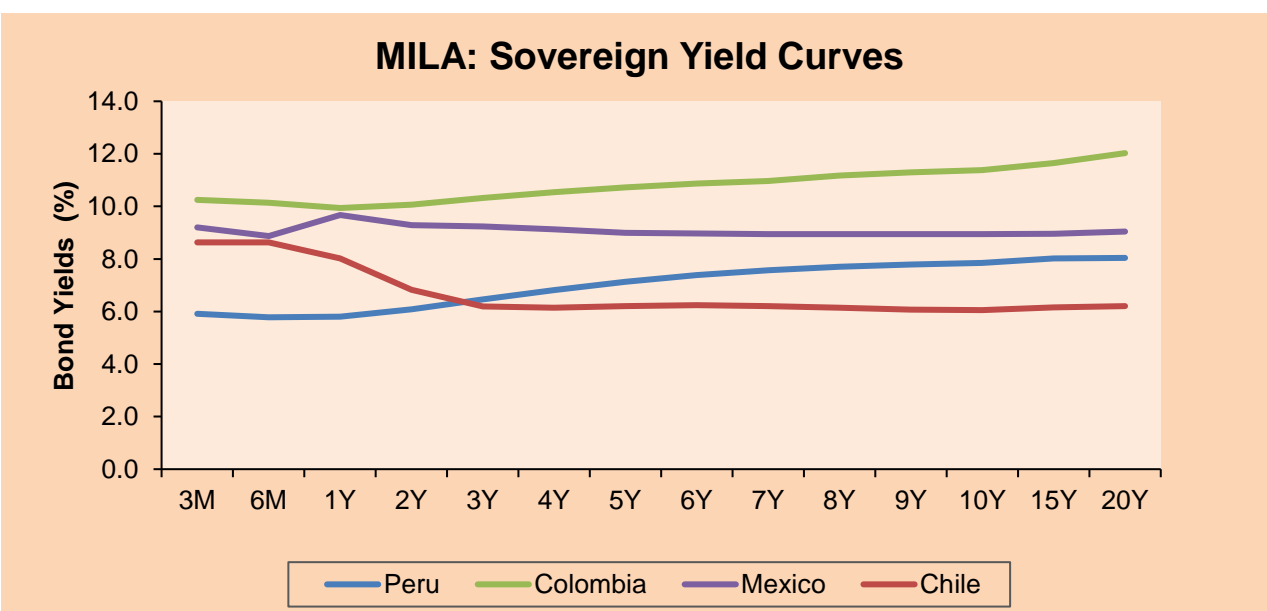
Currency	Price	1D*	5D*	30 D*	YTD*
▼ Sol (PEN)	3.7754	-0.35%	1.37%	2.28%	-5.59%
▲ Chilean Peso (CLP)	920.65	0.23%	4.33%	11.55%	8.06%
- Colombian Peso (COP)	4,138.38	0.00%	6.06%	5.23%	1.42%
▲ Mexican Peso (MXN)	19.92	0.27%	-1.69%	1.75%	-2.96%

*Legend: Variation 1D: 1 day; 5D: 5 days; 1M: 1 Month; YTD: Var% 12/31/21 to date



Base: 28/03/22=100
Source: Bloomberg

Fixed Income	Currency	Price	Bid Yield (%)	Ask Yield (%)	Duration
PERU 7.35 07/21/25	USD	108.028	4.58	4.44	2.67
PERU 4.125 08/25/27	USD	97.953	4.62	4.53	4.53
PERU 8.75 11/21/33	USD	127.191	5.55	5.46	7.65
PERU 6.55 03/14/37	USD	108.818	5.70	5.62	9.07
PERU 5.625 11/18/2050	USD	103.854	5.38	5.34	14.19
CHILE 2.25 10/30/22	USD	100.041	2.70	1.54	0.33
CHILE 3.125 01/21/26	USD	96.742	4.18	4.05	3.29
CHILE 3.625 10/30/42	USD	79.961	5.28	5.20	13.50
COLOM 11.85 03/09/28	USD	140.145	4.01	3.82	4.34
COLOM 10.375 01/28/33	USD	120.369	7.66	7.43	6.55
COLOM 7.375 09/18/37	USD	93.69	8.14	8.06	8.67
COLOM 6.125 01/18/41	USD	79.846	8.29	8.25	9.75
MEX 4 10/02/23	USD	79.846	8.288	8.247	9.75
MEX5.55 01/45	USD	91.886	6.25	6.19	12.06



Source: Bloomberg

Equity

Largest gains	Exchange	Currency	Price	▲%	Largest losses	Exchange	Currency	Price	▼%
GRUPO BIMBO-A	Mexico	MXN	65.96	3.37	FIBRA TERRA	Mexico	MXN	26.64	-2.06
GRUPO FIN INB-O	Mexico	MXN	32.76	3.34	VOLCAN CIA MIN-B	Peru	PEN	0.56	-1.75
INDUSTRIAS PENOL	Mexico	MXN	192.92	2.78	AMERICA MOVIL-L	Mexico	MXN	20.34	-0.68
GRUMA SAB-B	Mexico	MXN	221.20	2.49	GRUPO ELEKTRA SA	Mexico	MXN	1140.21	-0.60
COCA-COLA FEMSA	Mexico	MXN	118.27	2.47	CREDICORP LTD	Peru	USD	124.29	-0.57

Per Turnover	Exchange	Amount (US\$)	Per Volume	Exchange	Volume
FOMENTO ECON-UBD	Mexico	35,021,774	CEMEX SAB-CPO	Mexico	29,699,556
WALMART DE MEXIC	Mexico	29,534,933	AMERICA MOVIL-L	Mexico	25,459,184
AMERICA MOVIL-L	Mexico	26,012,398	WALMART DE MEXIC	Mexico	8,642,600
GRUPO F BANORT-O	Mexico	20,575,068	TRUST FIBRA UNO	Mexico	6,572,104
GRUPO MEXICO-B	Mexico	20,308,360	ALFA SAB-A	Mexico	5,995,919

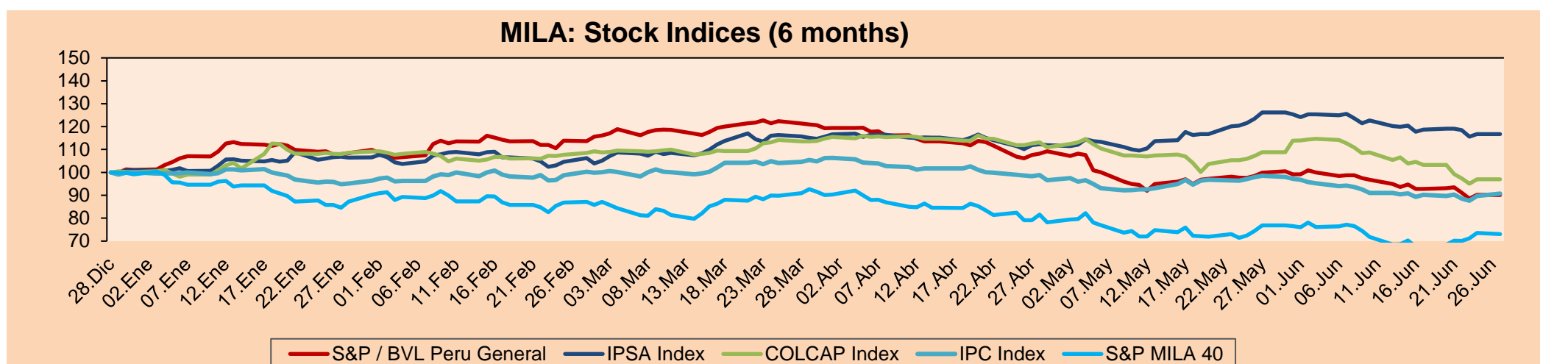
MILA

Peru: The BVL General index ended today's session with a negative result of -0.21%. The index maintains a negative annual cumulative trend of -10.88% in local currency, while the dollar-adjusted performance amounted to -5.6%. Next, the S&P/BVL Peru SEL varied by -0.12% while the S&P/BVL LIMA 25 varied by -0.12%. The PEN spot reached S/3.7754. Headline: MEF will not extend IGV exoneration to food and ISC exoneration to fuels.

Chile: The Chilean stock market did not trade today due to the celebration of St. Peter and St. Paul's Day.

Colombia: The Colombian stock exchange did not trade today due to the celebration of the Sacred Heart.

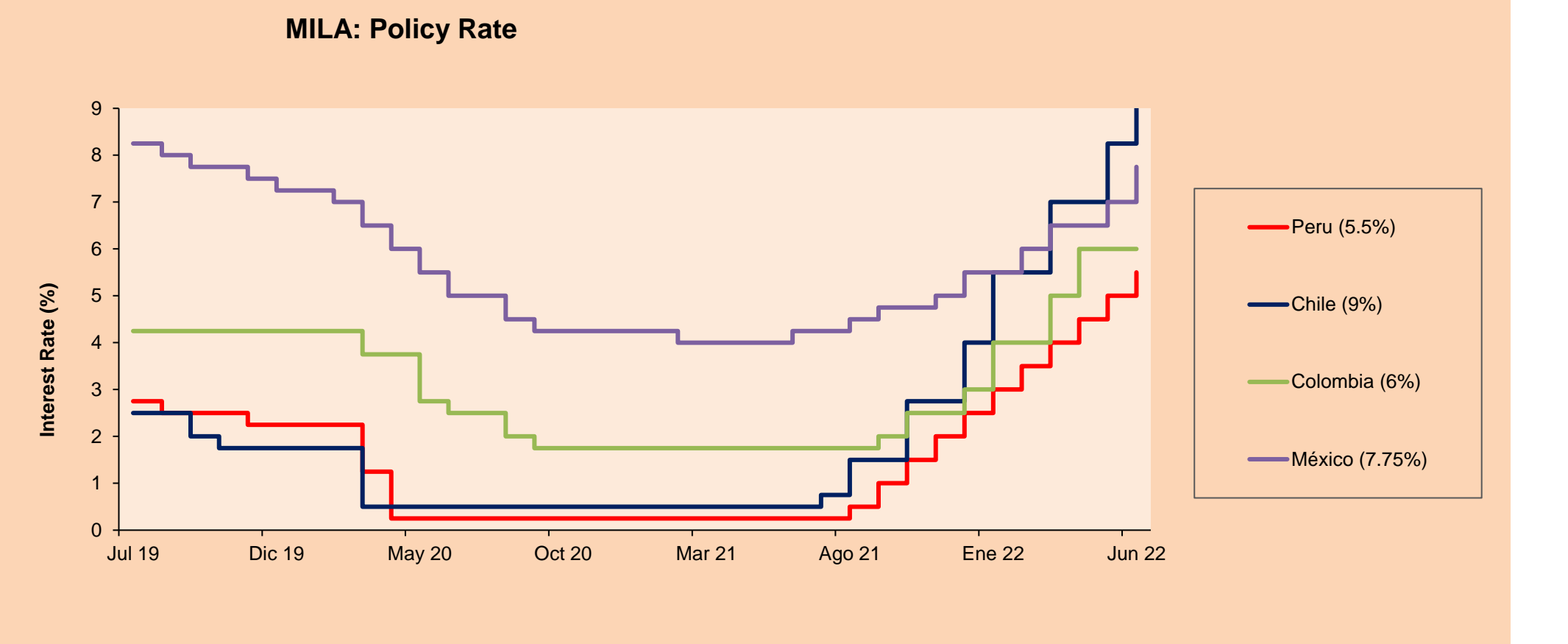
Mexico: The IPC index closed the day in positive territory of +1.16%. The sectors that lost the most during the day were Consumer Staples (+2.05%) and Health Care (+2.02%). The best performing stocks were Grupo Bimbo SAB (+3.37%), Grupo Financiero Inbursa (+3.34%). Headline: Why Banxico's rate hike is positive for banks Does Moody's explain this?



Base: 29/12/21=100
Source: Bloomberg

ETFs

ETFs	Curr.	Close	1D	5D	30 D	YTD	Exchange
▲ iShares MSCI All Peru Caped Index Fund	USD	26.485	0.47%	-4.90%	-15.22%	-10.58%	NYSE Arca
▲ iShares MSCI All Chile Caped Index Fund	USD	24.86	1.30%	-3.57%	-19.02%	7.67%	Cboe BZX
▲ Global X MSCI Colombia	USD	9.25	1.65%	-10.45%	-18.03%	-7.44%	NYSE Arca
▲ iShares MSCI Mexico Capped	USD	47.56	0.49%	3.82%	-10.53%	-6.01%	NYSE Arca
▲ iShares MSCI Emerging Markets	USD	40.7	0.12%	2.60%	-3.21%	-16.68%	NYSE Arca
▲ Vanguard FTSE Emerging Markets	USD	42.22	0.07%	1.86%	-1.91%	-14.64%	NYSE Arca
▲ iShares Core MSCI Emerging Markets	USD	49.79	0.02%	2.24%	-4.01%	-16.82%	NYSE Arca
▼ iShares JP Morgan Emerging Markets Bonds	USD	55.44	-0.20%	1.69%	-3.90%	-11.75%	Cboe BZX
▼ Morgan Stanley Emerging Markets Domestic	USD	4.54	-0.66%	2.48%	-3.20%	-17.15%	New York



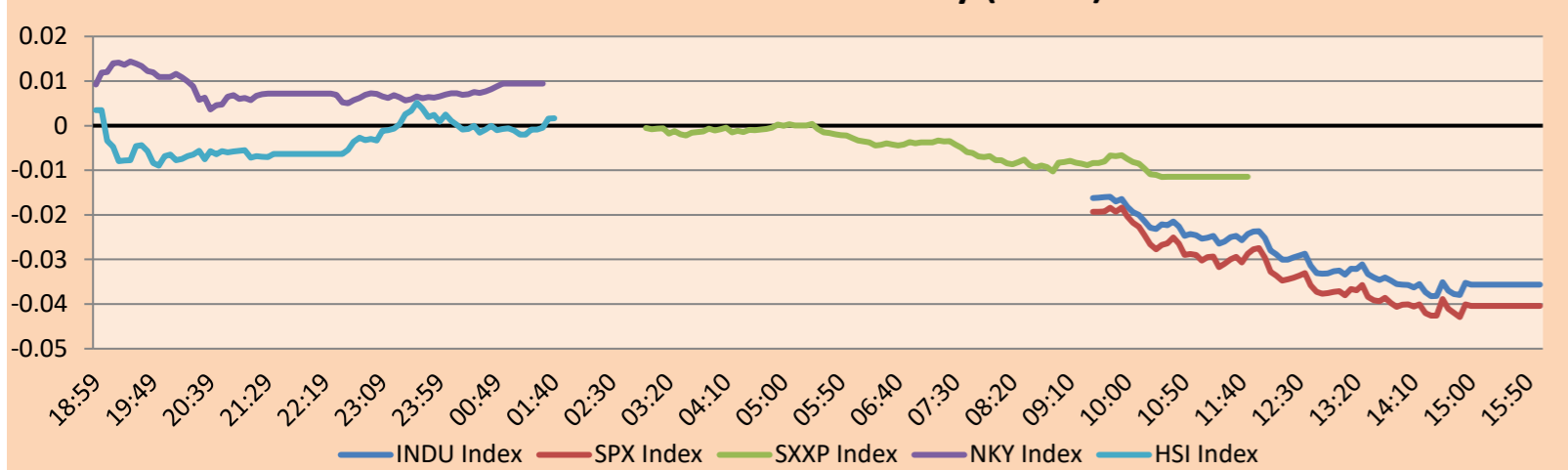
Source: Bloomberg

WORLD

Main Indices	Close	1 D*	5 D*	1 M*	YTD*	Market Cap. (US\$ Mill.)
▼ Dow Jones (USA)	31,438.26	-0.20%	5.18%	-5.20%	-13.36%	9,877,641
▼ Standard & Poor's 500 (EEUU)	3,900.11	-0.30%	6.13%	-6.07%	-18.05%	34,279,606
▼ NASDAQ Composite (USA)	11,524.55	-0.72%	6.73%	-5.74%	-26.91%	19,706,682
▲ Stoxx EUROPE 600 (Europe)	415.09	0.52%	1.95%	-6.02%	-14.47%	10,821,853
▲ DAX (Germany)	13,186.07	0.52%	-0.60%	-8.22%	-16.44%	1,302,899
▲ FTSE 100 (United Kingdom)	7,258.32	0.69%	1.92%	-3.24%	-0.61%	1,630,110
▼ CAC 40 (France)	6,047.31	-0.43%	2.15%	-6.27%	-14.62%	1,840,447
▼ IBEX 35 (Spain)	8,242.60	-0.02%	-0.52%	-6.89%	-4.54%	518,906
▲ MSCI AC Asia Pacific Index	161.64	1.53%	3.38%	-2.60%	-16.30%	22,248,550
▲ HANG SENG (Hong kong)	22,229.52	2.35%	5.04%	8.32%	-4.18%	3,596,673
▲ SHANGHAI SE Comp. (China)	3,379.19	0.88%	1.92%	8.91%	-6.33%	6,950,850
▲ NIKKEI 225 (Japan)	26,871.27	1.43%	4.27%	1.00%	-6.05%	3,424,872
▲ S&P / ASX 200 (Australia)	6,705.95	1.93%	4.24%	-5.83%	-9.15%	1,556,033
▲ KOSPI (South Korea)	2,401.92	1.49%	0.46%	-8.19%	-18.66%	1,434,614

*Legend: Variation 1D: 1 Day; 5D: 5 Days; 1M: 1 Month; YTD: Var.% 12/31/21 to date

Mercado Evolución Intraday (var %)

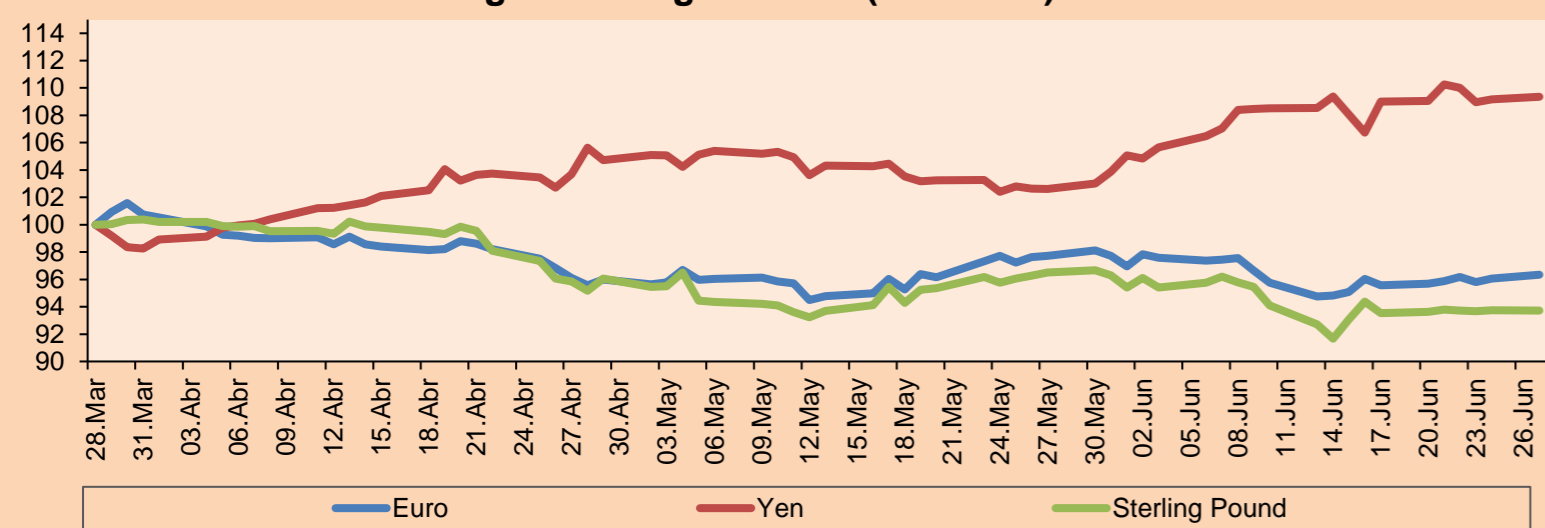


Source: Bloomberg

Currency	Price	1 D*	5 D*	1 M*	YTD*
▲ Euro	1.0584	0.29%	0.69%	-1.41%	-6.91%
▲ Yen	135.4600	0.17%	0.29%	6.57%	17.71%
▼ Sterling Pound	1.2265	-0.02%	0.10%	-2.90%	-9.36%
▲ Yuan	6.6918	0.03%	-0.01%	-0.11%	5.28%
▼ Hong Kong Dollar	7.8471	-0.03%	-0.04%	-0.03%	0.65%
▼ Brazilian Real	5.2384	-0.08%	0.91%	10.73%	-6.05%
▲ Argentine Peso	124.7170	0.37%	1.47%	4.32%	21.40%

*Legend: Variation 1D: 1 Day; 5D: 5 Days; 1M: 1 Month; YTD: Var.% 12/31/21 to date

Foreign Exchange Indices (3 months)

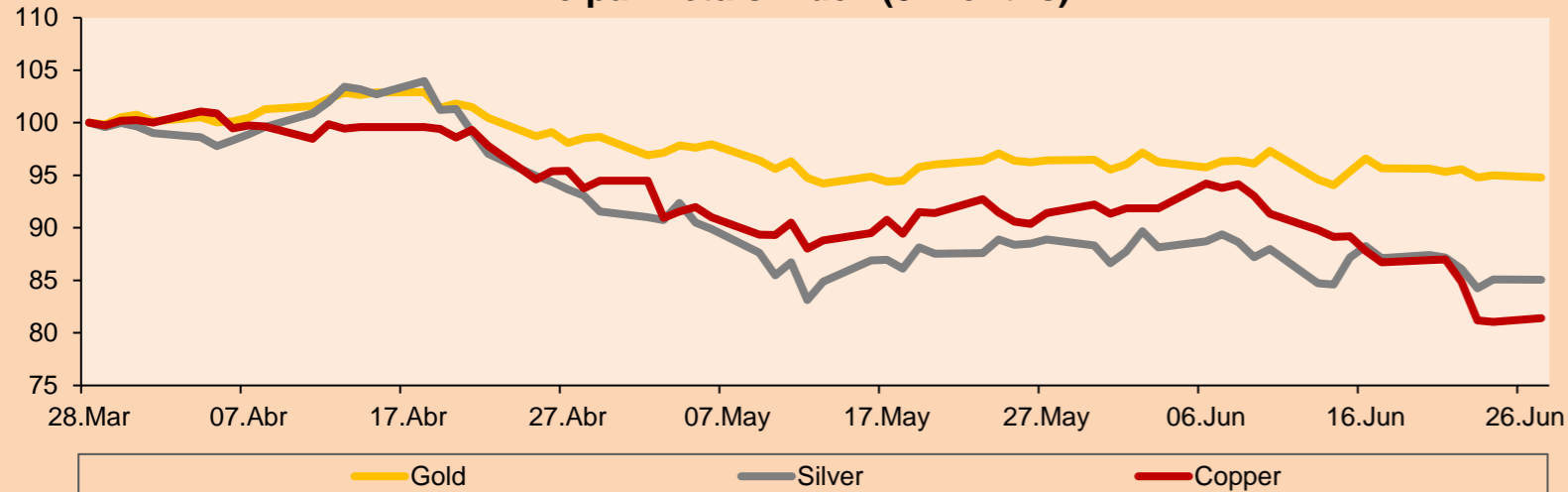


Base: 28/03/22=100
Source: Bloomberg

Commodities	Close	1 D*	5 D*	1 M*	YTD*
▼ Oro (US\$ Oz. T) (LME)	1,822.85	-0.22%	-0.86%	-1.67%	-0.35%
▼ Plata (US\$ Oz. T) (LME)	21.16	-0.02%	-2.70%	-4.31%	-9.21%
▲ Cobre (US\$ TM) (LME)	8,419.25	0.46%	-6.34%	-10.94%	-13.57%
▼ Zinc (US\$ TM) (LME)	3,384.01	-2.90%	-5.84%	-12.49%	-5.74%
▲ Petróleo WTI (US\$ Barril) (NYM)	109.57	1.81%	1.46%	-2.37%	51.82%
▲ Estaño (US\$ TM) (LME)	27,406.00	9.38%	-11.57%	-20.23%	-30.39%
▲ Plomo (US\$ TM) (LME)	2,006.50	4.87%	-2.81%	-6.93%	-14.17%
▼ Azúcar #11 (US\$ Libra) (NYB-ICE)	18.26	-0.27%	-2.51%	-7.54%	-0.54%
▼ Cacao (US\$ TM) (NYB-ICE)	2,410.00	-0.90%	-0.95%	-2.90%	-6.19%
▼ Café Arábica (US\$ TM) (NYB-ICE)	222.10	-0.52%	-2.33%	-3.31%	-1.07%

*Leyenda: Variación 1D: 1 Día; 5D: 5 Días; 1M: 1 Mes; YTD: Var.% 31/12/21 a la fecha

Principal Metals Index (3 months)



Base: 28/03/22=100
Source: Bloomberg

Equity

Germany (Stocks from DAX Index)

Largest gains	Curr.	Price	▲%	Exchange	Largest losses	Curr.	Price	▼%	Exchange
BAYN GY	EUR	59.4	2.79	Xetra	EOAN GY	EUR	8.514	-1.02	Xetra
CON GY	EUR	68.28	2.49	Xetra	LIN GY	EUR	280.5	-0.99	Xetra
FRE GY	EUR	28.73	2.24	Xetra	MUV2 GY	EUR	220.8	-0.81	Xetra
PAH3 GY	EUR	66.1	2.01	Xetra	MTX GY	EUR	172.4	-0.69	Xetra

Europe (Stocks from STOXX EUROPE 600)

Largest gains	Curr.	Price	▲%	Exchange	Largest losses	Curr.	Price	▼%	Exchange
VITR SS	SEK	247.2	14.98	Stockholm	FORTUM FH	EUR	15.195	-4.76	Helsinki
SBBB SS	SEK	18.03	9.14	Stockholm	UN01 GY	EUR	17.16	-3.60	Xetra
NESTE FH	EUR	44.71	7.66	Helsinki	G IM	EUR	15.535	-3.03	Borsa Italiana
ALIFB SS	SEK	174.6	7.18	Stockholm	UHR SE	CHF	226	-2.75	SIX Swiss Ex

Global Overview:

United States:

The US market closes with negative returns. The DOW JONES index closed in negative territory due to the persistence of pessimistic investor expectations in a context in which equity markets are being affected by high inflation and concerns of further restrictions by the Federal Reserve. Likewise, most stocks posted losses after a rather volatile start to the day, with greater emphasis on rate hike-sensitive tech giants such as Amazon, Microsoft or Alphabet, who were the biggest losers. The S&P500 index also ended with a negative performance, as within the 11 sectors that make up this index, 8 fell significantly. Among these, losses originated in consumer discretionary stocks; despite this, stocks related to the energy sector posted gains of 2.8%. Finally, the NASDAQ index was the most punished within the session, despite the publication of new capital goods orders from U.S. manufacturers showing an increase for the third consecutive month, which would indicate an increase in spending plans by companies that continues to be solid despite the high inflationary context and the increase in interest rates. Thus, DOW JONES -0.20%; S&P 500 -0.30%; NASDAQ -0.72% ended the day with negative results.

Europe:

Major European indices ended the session with positive returns as Beijing and Shanghai eased restrictions imposed by COVID-19. The pan-European STOXX 600 index ended with gains amid reduced bets on aggressive interest rate hikes by central banks in the face of rising inflation and the recent moderation in commodity prices. The UK market, reflected in the FTSE 100, rose this session as the easing of COVID restrictions in Shanghai and the relaxation of testing mandates in several Chinese cities supported base metal prices. Meanwhile, the DAX index closed in positive territory as investors bet on a less restrictive approach by the Fed to its interest rates. However, price volatility is expected to remain until there are signs that inflation is easing and recession risks recede. The French market fell this session in a context where attention is focused on the ECB's annual monetary policy forum. Christine Lagarde and Jerome Powell, chairmen of the ECB and the Fed, will be speaking at the forum. Thus, FTSE 100 +0.69%; CAC 40 -0.43%; DAX +0.52%; STOXX 600 +0.52% ended in positive levels..

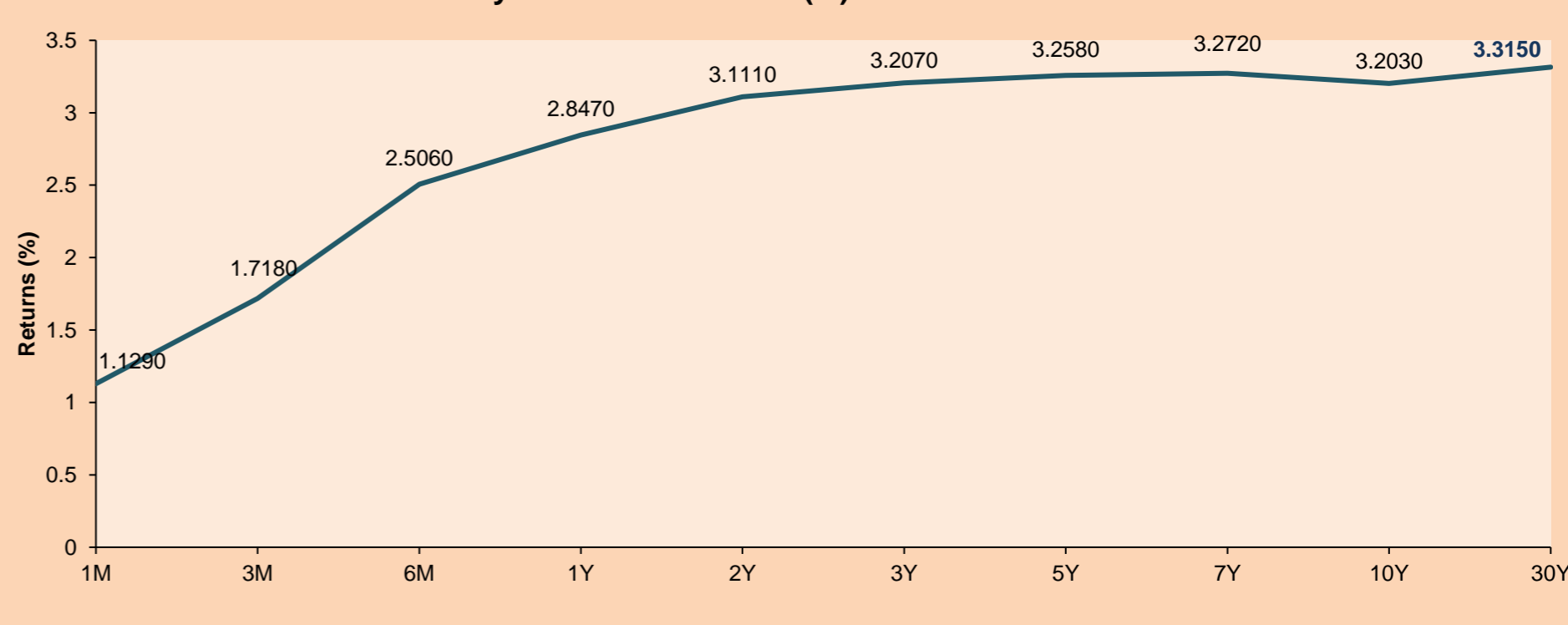
Asia:

The main Asian indices closed with mostly positive performances. The Chinese market closed in positive territory, in a scenario where the consumption and tourism sector led with gains, after Shanghai declared victory over COVID-19, after the city reported zero cases for the first time in 2 months. The Hang Seng index finished higher on a backdrop where the Central Bank of China made the largest one-day cash injection into the banking system in more than 3 months. There was also positive sentiment in Hong Kong driven by talks on a favorable policy package for the anniversary. The South Korean market rallied this session, with the won leading most Asian emerging market currencies in its advance as gains in regional stocks boosted risk sentiment on concerns of a lingering U.S. recession. The Japanese market closed in positive territory, in a market looking to chase similar gains to Wall Street indices made on Friday, as investors sought to rally in a number of stocks following 6 months of losses. The Australian market ended higher, despite the fact that a group of radical protesters against carbon emissions closed one of the main roads in Sydney, in a context where they called it the opening of a week of resistance. Thus, NIKKEI +1.45%; HANG SENG +2.35%; CSI 300 +1.13%; S&P/ASX 200 +1.93%; KOSPI +1.49%; SHANGAI COMPOSITE +0.88% ended with positive performances.

ETFs

	Curr.	Close	1D	5D	30 D	YTD	Exchange
SPDR S&P 500 ETF TRUST	USD	388.59	-0.38%	6.21%	-6.42%	-18.18%	NYSE Arca
ISHARES MSCI EMERGING MARKET	USD	40.70	0.12%	2.60%	-3.21%	-16.68%	NYSE Arca
ISHARES IBOXX HIGH YLD CORP	USD	74.58	-0.61%	0.72%	-7.00%	-14.29%	NYSE Arca
FINANCIAL SELECT SECTOR SPDR	USD	32.23	-0.34%	4.20%	-9.39%	-17.46%	NYSE Arca
VANECK GOLD MINERS ETF	USD	29.47	-0.64%	-3.03%	-9.35%	-7.99%	NYSE Arca
ISHARES RUSSELL 2000 ETF	USD	175.74	0.37%	6.39%	-6.34%	-21.00%	NYSE Arca
SPDR GOLD SHARES	USD	169.90	-0.11%	-0.80%	-1.71%	-0.62%	NYSE Arca
ISHARES 20+ YEAR TREASURY BO	USD	111.60	-0.85%	-0.43%	-6.28%	-24.69%	NASDAQ GM
INVESCO QQQ TRUST SERIES 1	USD	292.45	-0.73%	6.47%	-5.39%	-26.49%	NASDAQ GM
ISHARES BIOTECHNOLOGY ETF	USD	120.12	0.07%	9.64%	0.52%	-21.29%	NASDAQ GM
ENERGY SELECT SECTOR SPDR	USD	73.69	2.93%	0.27%	-16.76%	32.77%	NYSE Arca
PROSHARES ULTRA VIX ST FUTUR	USD	13.71	-4.73%	-15.32%	-3.52%	10.30%	Cboe BZX
UNITED STATES OIL FUND LP	USD	82.93	2.04%	-0.49%	-2.96%	52.56%	NYSE Arca
ISHARES MSCI BRAZIL ETF	USD	27.90	2.57%	-0.07%	-21.89%	-0.61%	NYSE Arca
SPDR S&P OIL & GAS EXP & PR	USD	127.57	4.57%	-1.50%	-18.77%	33.07%	NYSE Arca
UTILITIES SELECT SECTOR SPDR	USD	69.57	0.81%	7.25%	-7.70%	-2.81%	NYSE Arca
ISHARES US REAL ESTATE ETF	USD	93.83	-0.22%	7.04%	-6.51%	-19.21%	NYSE Arca
SPDR S&P BIOTECH ETF	USD	76.80	-0.34%	13.59%	8.03%	-31.40%	NYSE Arca
ISHARES IBOXX INVESTMENT GRA	USD	109.08	-0.92%	-0.32%	-5.39%	-17.69%	NYSE Arca
ISHARES JP MORGAN USD EMERGI	USD	85.31	-1.36%	-0.72%	-6.99%	-21.78%	NASDAQ GM
REAL ESTATE SELECT SECT SPDR	USD	41.66	-0.36%	6.60%	-7.05%	-19.59%	NYSE Arca
ISHARES CHINA LARGE-CAP ETF	USD	34.12	0.83%	5.86%	10.28%	-6.72%	NYSE Arca
CONSUMER STAPLES SPDR	USD	72.65	-0.27%	5.55%	-3.13%	-5.78%	NYSE Arca
VANECK JUNIOR GOLD MINERS	USD	35.24	-0.96%	-4.13%	-11.61%	-15.96%	NYSE Arca
SPDR BLOOMBERG HIGH YIELD BO	USD	92.21	-0.47%	0.62%	-7.12%	-15.07%	NYSE Arca
VANGUARD REAL ESTATE ETF	USD	92.98	-0.15%	6.02%	-7.30%	-19.85%	NYSE Arca
GRAYSCALE BITCOIN TRUST BTC	USD	13.51	-2.45%	8.34%	-28.74%	-60.55%	OTC US

USA Treasury Bonds Yield Curve (%)



Source: Bloomberg

LIMA

Stocks

	Ticker	Currency	Price	1D*	5D*	30D*	YTD*	Frequency	Volume (US\$)	Beta	Dividend Yield (%)	Price Earning	Market Cap. (M US\$)	Economic Sector*	Index Weight
▲	ALICORC1 PE**	S/.	5.20	0.52%	-3.66%	-5.64%	-10.89%	95.00%	55,348	0.81	16.06	11.65	1,174.11	Industrial	3.53%
-	ATACOCB1 PE**	S/.	0.09	0.00%	-10.00%	-10.00%	-25.00%	25.00%	5	1.00	0.00	-	23.90	Mining	1.02%
▲	BACKUS1 PE**	S/.	21.99	4.71%	-0.95%	2.28%	7.27%	90.00%	8,130	0.79	15.60	7.44	7,823.15	Industrial	0.82%
▼	BAP PE**	US\$	124.29	-0.57%	-0.57%	-12.93%	0.41%	100.00%	13,169	1.30	3.22	-	9,883.54	Diverse	5.82%
▲	BVN PE**	US\$	7.15	0.70%	-2.72%	-20.91%	-2.05%	95.00%	46,754	1.39	0.98	-	1,970.79	Mining	5.88%
-	CASAGRC1 PE**	S/.	7.65	0.00%	-4.38%	6.25%	-15.93%	80.00%	37,516	1.17	0.00	4.58	170.68	Agricultural	1.31%
-	BBVAC1 PE**	S/.	1.59	0.00%	-10.17%	-1.85%	-12.15%	90.00%	2,299	0.81	0.00	6.06	2,846.31	Finance	2.85%
▲	CORAREI1 PE**	S/.	1.35	1.50%	-6.25%	-8.78%	-21.51%	70.00%	3,748	0.82	19.00	2.38	579.63	Industrial	1.72%
▼	CPACASC1 PE**	S/.	3.70	-1.33%	-7.50%	-7.50%	-25.25%	90.00%	5,870	0.76	21.35	10.28	450.72	Industrial	2.38%
-	CVERDEC1 PE**	US\$	28.20	0.00%	-2.76%	-6.00%	-24.25%	95.00%	3,586,010	0.88	0.00	7.62	9,871.58	Mining	5.25%
▼	ENGEPEC1 PE**	S/.	2.10	-0.94%	5.00%	13.51%	1.45%	80.00%	35,655	0.79	14.94	7.83	1,332.49	Public Services	1.44%
-	ENDISPC1**	S/.	3.80	0.00%	0.00%	2.70%	-5.00%	20.00%	17	0.85	0.00	6.82	642.72	Public Services	0.98%
▲	FERREYC1 PE**	S/.	2.11	0.48%	-0.47%	-1.86%	2.93%	100.00%	31,856	0.93	11.30	4.04	528.74	Diverse	4.90%
-	AENZAC1 PE**	S/.	0.94	0.00%	-8.74%	-11.32%	-31.39%	85.00%	578	0.96	0.00	-	298.02	Diverse	4.05%
▼	IFS PE**	US\$	23.38	-0.09%	-6.52%	-10.25%	-12.92%	90.00%	3,507	0.97	10.27	-	2,698.47	Diverse	7.22%
▲	INRETC1 PE**	US\$	25.99	1.52%	-10.38%	-17.49%	-25.64%	95.00%	60,675	0.77	5.27	17.04	2,826.33	Diverse	5.28%
-	LUSURC1 PE**	S/.	15.80	0.00%	-1.25%	10.10%	10.96%	65.00%	42	0.00	0.00	13.10	2,037.89	Public Services	1.81%
-	MINSURI1 PE**	S/.	3.78	0.00%	-13.10%	-20.59%	-4.30%	95.00%	3,604	1.11	9.35	1.42	2,886.52	Mining	3.09%
-	PML PE**	US\$	0.13	0.00%	0.00%	0.00%	8.33%	15.00%	1,300	1.13	0.00	-	34.37	Mining	2.12%
▲	SCCO PE**	US\$	51.50	0.25%	-6.94%	-17.07%	-16.64%	95.00%	64,245	1.02	8.06	11.04	39,814.14	Industrial	2.12%
-	SIDERC1 PE**	S/.	1.36	0.00%	-5.56%	-8.11%	-15.00%	70.00%	10	0.71	0.00	3.20	252.16	Mining	2.14%
-	TV PE**	US\$	0.40	0.00%	-11.11%	-23.08%	-69.23%	65.00%	508	1.30	0.00	-	39.58	Industrial	1.43%
▼	UNACEMC1 PE**	S/.	1.50	-0.66%	-6.83%	-5.06%	-37.50%	95.00%	18,356	1.05	7.33	-	722.36	Mining	2.93%
▼	VOLCABC1 PE**	S/.	0.56	-1.75%	-5.08%	-11.11%	-6.67%	100.00%	4,580	1.16	0.00	7.58	604.67	Industrial	3.00%
-	BROCALC1 PE**	S/.	5.10	0.00%	-13.56%	-27.14%	-1.92%	20.00%	930	0.00	0.00	37.85	219.51	Mining	5.90%
#####	RIMSEGC1 PE**	S/.	#N/A N/A	#¡VALOR!	#¡VALOR!	0.00%	#¡VALOR!	0.00%	439	0.00	0.00	-	#¡VALOR!	Finance	3.09%
-	CORAREC1 PE**	US\$	2.18	0.00%	0.00%	2.35%	14.74%	70.00%	8,720	0.00	11.77	3.84	2,188.32	Mining	2.12%
▼	ENGIEC1 PE**	S/.	5.30	-5.36%	-5.36%	-6.69%	-9.56%	25.00%	3,931	0.53	4.73	14.46	844.22	Diversas	2.12%
▼	GBVLAC1 PE**	S/.	2.39	-0.42%	-0.42%	-1.24%	-12.13%	30.00%	8,700	0.00	8.64	24.84	95.47	Diversas	2.14%

Quantity of shares: 28
Source: Bloomberg, Economática
* Bloomberg Industry Classification System
** PER is used in the stock market and original currency of the instrument

Up 7
Down 8
Hold 13

*Legend: Variation 1D: 1 Day; 5D: 5 Days, 1M: 1 Month; YTD: Var.% 12/31/21 to date

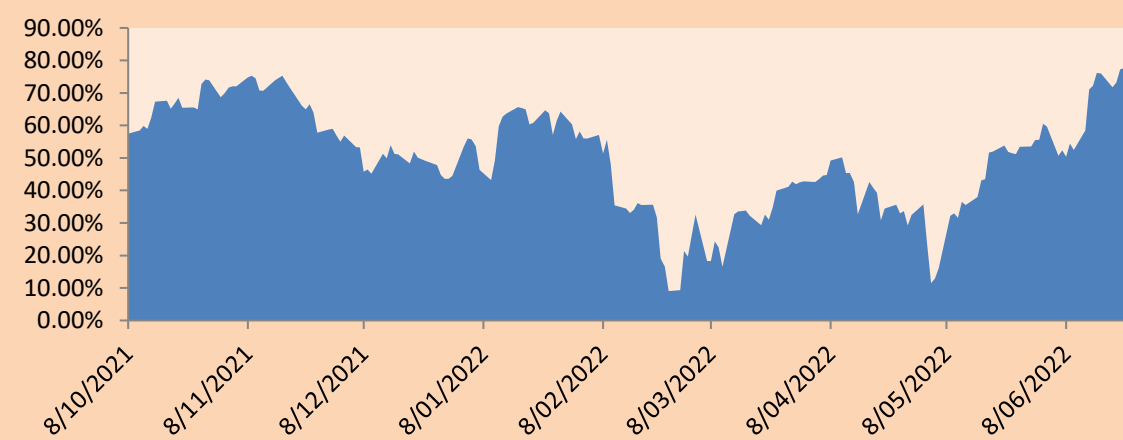
Sectorial Indices

		Close	1D*	5D*	30D*	YTD*	Beta
▼	S&P/BVLMining	341.70	-0.06%	-5.08%	-15.05%	-16.98%	1.06
▲	S&P/BVLConsumer	991.24	1.46%	-5.53%	-5.02%	-13.65%	0.53
▲	S&P/BVLIndustrials	221.25	-0.14%	-4.04%	-4.07%	-14.27%	0.74
▼	S&P/BVLFinancials	876.07	-0.67%	-0.10%	-9.89%	-3.31%	1.33
▼	S&P/BVLConstruction	220.03	-0.43%	-5.65%	-5.09%	-22.36%	0.68
▼	S&P/BVLPublicSvcs	535.26	-3.04%	-1.23%	0.83%	-2.41%	0.10
▼	S&P/BVLElectricUtil	522.54	-3.04%	-1.23%	0.82%	-2.41%	0.10

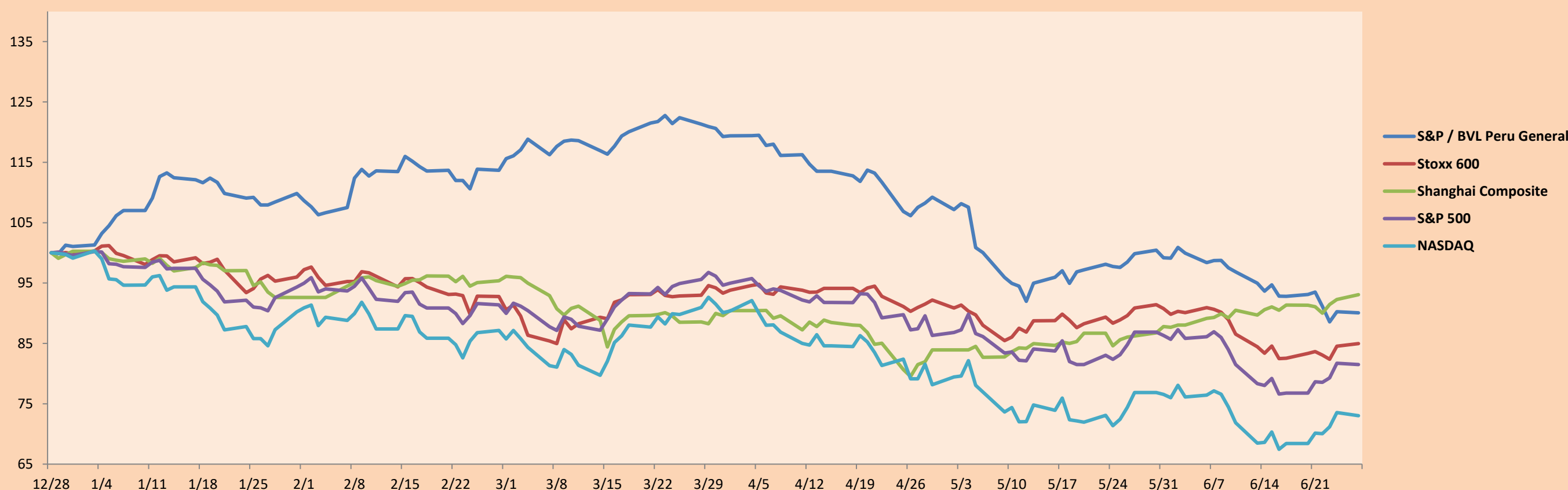
S&P/BVLConstructionTRPEN

*Legend: Variation 1D: 1 Day; 5D: 5 Days, 1M: 1 Month; YTD: Var.% 12/31/21 to date

Correlation Graph of Returns of Mining Index against Metallic Index of London (3 months)



Indices (6 months)



Base: 28/12/21=100
Source: Bloomberg

Capital Market Laboratory Coordinator: MS Javier Penny Pestana
Collaboration: Sebastian Ore, Fabrizio Lavalle, Miguel Solimano y Jhonatan Cueva
email: pulsobursatil@ulima.edu.pe
facebook: www.facebook.com/pulsobursatil.ul

SOVEREIGN RATING

RISK RATINGS

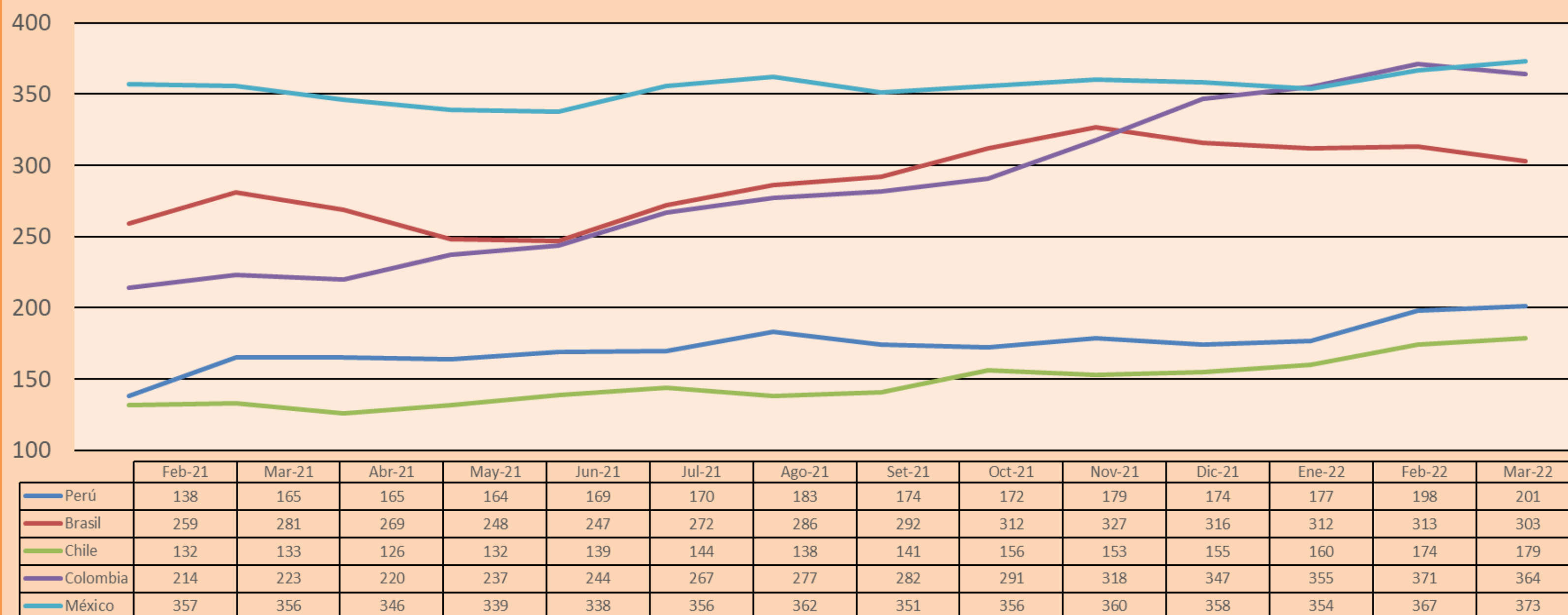
Moody's	S&P	Fitch	
Aaa	AAA	AAA	Prime
Aa1	AA+	AA+	High credit quality
Aa2	AA	AA	
Aa3	AA-	AA-	
A1	A+	A+	Medium-high grade, with low credit risk
A2	A	A	
A3	A-	A-	
Baa1	BBB+	BBB+	Moderate Credit Risk
Baa2	BBB	BBB	
Baa3	BBB-	BBB-	
Ba1	BB+	BB+	It has speculative elements and it is subject to substantial credit risk
Ba2	BB	BB	
Ba3	BB-	BB-	
B1	B+	B+	It is considered speculative and it has high credit risk
B2	B	B	
B3	B-	B-	
Caa1	CCC+	CCC	
Caa2	CCC	CCC	
Caa3	CCC-	CCC	
Ca	CC	CC	Very close to default or in default
	C	C	
C	D	DDD DD D	

Source: Bloomberg

Latin America Credit Rating			
Clasificadora de riesgo			
Country	Moody's	Fitch	S&P
Peru	Baa1	BBB	BBB
México	Ba2	BB-	BB-
Venezuela	C	WD	NR
Brazil	Ba2	BB-	BB-
Colombia	Baa2	BB+	BB+
Chile	A1	A-	A
Argentine	Ca	WD	CCC+
Panama	Baa2	BBB-	BBB

Source: Bloomberg

LATAM Country Risk(bps)



Source: BCRP

Capital Market Laboratory Coordinator: MS Javier Penny Pestana
Collaboration: Sebastian Ore, Fabrizio Lavalle, Miguel Solimano y Jhonatan Cueva
email: pulsobursatil@ulima.edu.pe
facebook: www.facebook.com/pulsobursatil.ul