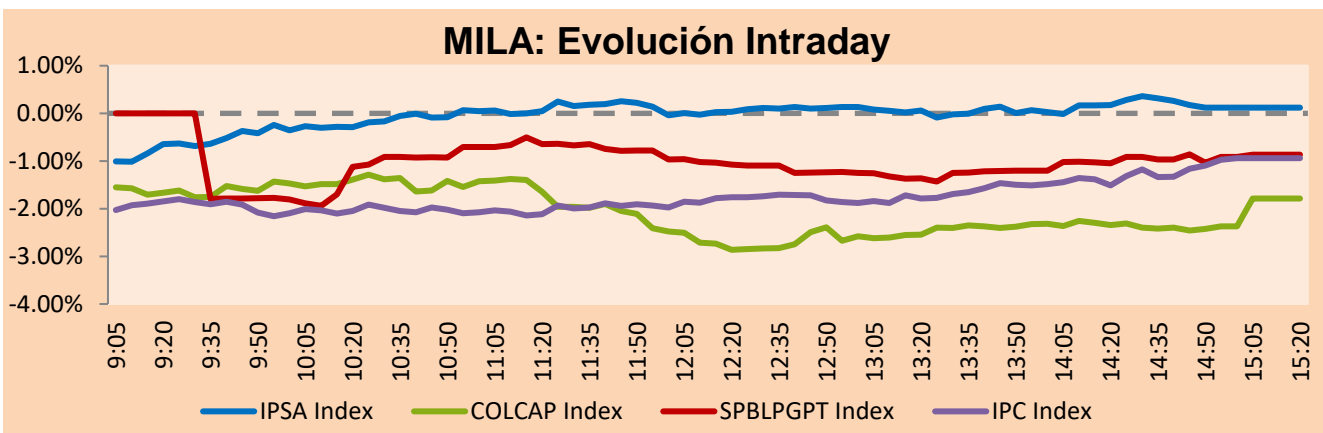


MILA

Lima, July 5, 2022

Main Indexes	Close	1 D	5 D	1 M	YTD	Cap. Burs. (US\$ bill)
▲ IPSA (Chile)	5,003.81	0.30%	-0.01%	-6.51%	16.14%	90.91
▲ IGPA (Chile)	26,417.48	0.52%	0.18%	-6.07%	22.49%	104.75
▼ COLSC (Colombia)	869.46	-0.23%	0.79%	-8.03%	-10.65%	5.28
▼ COLCAP (Colombia)	1,333.69	-1.79%	-2.36%	-17.37%	-5.48%	66.11
▼ S&P/BVL (Perú)*	18,292.04	-0.87%	-2.78%	-12.38%	-13.36%	79.33
▼ S&P/BVL SEL (Perú)	478.23	-1.57%	-2.23%	-12.48%	-15.14%	71.55
▼ S&P/BVL LIMA 25	25,814.18	-1.24%	-3.30%	-10.56%	-14.73%	78.53
▼ IPC (México)	47,503.22	-1.11%	-1.92%	-6.29%	-10.83%	298.30
▼ S&P MILA 40	427.97	-2.80%	-5.14%	-22.48%	-3.79%	6,124.75

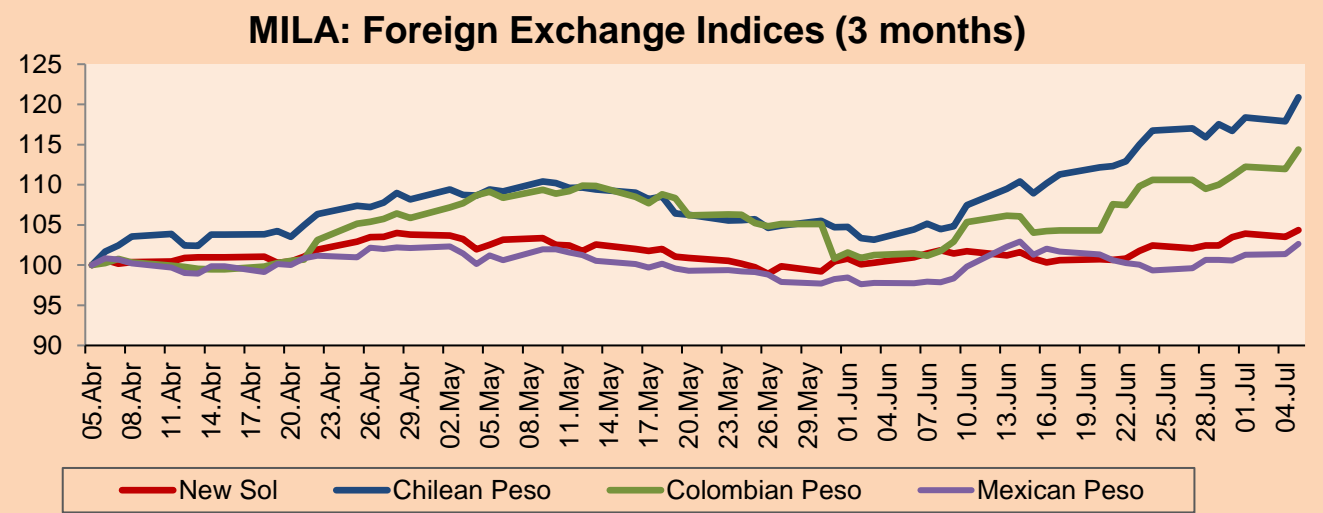
*Legend: Variation 1D: 1 day; 5D: 5 days; 1M: 1 Month; YTD: Var% 12/31/21 to date



Source: Bloomberg

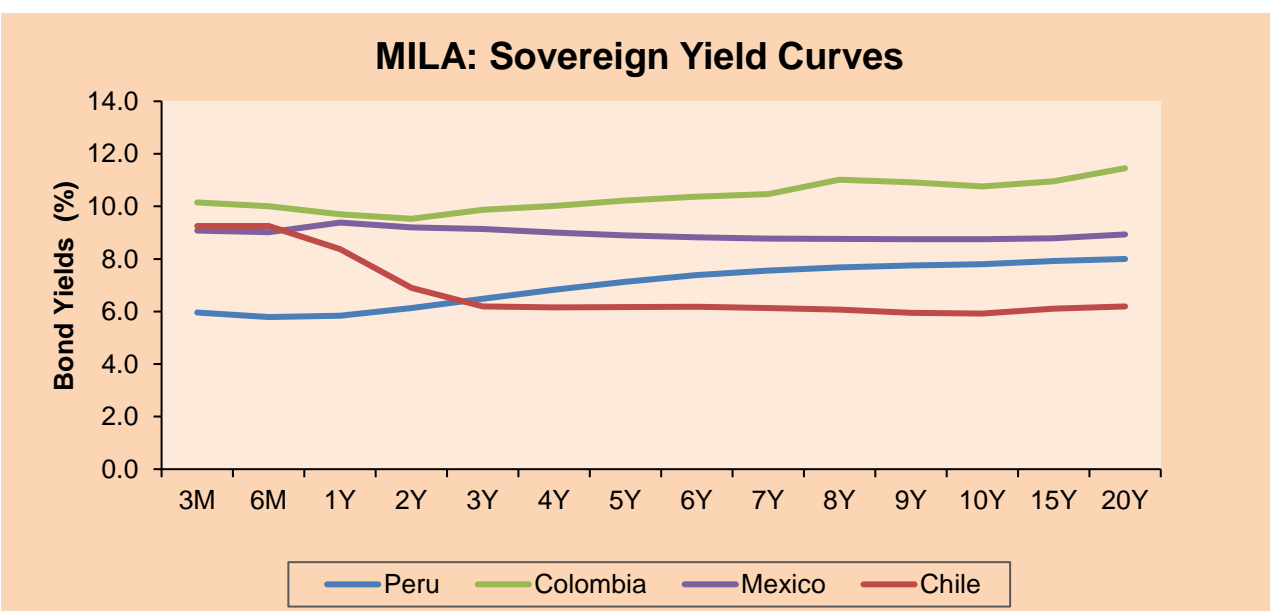
Currency	Price	1D*	5D*	30 D*	YTD*
▲ Sol (PEN)	3.8585	0.85%	1.93%	4.04%	-3.52%
▲ Chilean Peso (CLP)	951.00	2.53%	4.31%	17.19%	11.62%
▲ Colombian Peso (COP)	4,278.88	2.16%	4.45%	12.95%	4.87%
▲ Mexican Peso (MXN)	20.53	1.26%	2.00%	4.97%	0.01%

*Legend: Variation 1D: 1 day; 5D: 5 days; 1M: 1 Month; YTD: Var% 12/31/21 to date



Base: 05/04/22=100
Source: Bloomberg

Fixed Income	Currency	Price	Bid Yield (%)	Ask Yield (%)	Duration
PERU 7.35 07/21/25	USD	108.476	4.41	4.28	2.65
PERU 4.125 08/25/27	USD	98.832	4.41	4.35	4.51
PERU 8.75 11/21/33	USD	128.428	5.42	5.33	7.66
PERU 6.55 03/14/37	USD	111.078	5.49	5.40	9.10
PERU 5.625 11/18/2050	USD	106.043	5.24	5.19	14.30
CHILE 2.25 10/30/22	USD	99.986	2.99	1.59	0.31
CHILE 3.125 01/21/26	USD	97.306	4.00	3.89	3.27
CHILE 3.625 10/30/42	USD	81.905	5.11	5.01	13.65
COLOM 11.85 03/09/28	USD	140.32	3.94	3.79	4.33
COLOM 10.375 01/28/33	USD	121.338	7.55	7.30	6.52
COLOM 7.375 09/18/37	USD	94.222	8.10	7.98	8.68
COLOM 6.125 01/18/41	USD	80.258	8.27	8.17	9.76
MEX 4 10/02/23	USD	80.258	8.265	8.17	9.76
MEX5.55 01/45	USD	93.969	6.07	6.01	12.15



Source: Bloomberg

Equity

Largest gains	Exchange	Currency	Price	▲%	Largest losses	Exchange	Currency	Price	▼%
ITAU CORPBANCA	Chile	CLP	1.87	7.55	ECOPETROL	Colombia	COP	2173	-7.53
CEMEX SAB-CPO	Mexico	MXN	8.01	3.35	FOMENTO ECON-UBI	Mexico	MXN	132.15	-7.01
GRUPO NUTRESA SA	Colombia	COP	40990.00	2.48	GRUPO ENERGIA BO	Colombia	COP	2000	-6.85
CERVEZAS	Chile	CLP	5940.00	1.89	VOLCAN CIA MIN-B	Peru	PEN	0.48	-4.40
COCA-COLA FEMSA	Mexico	MXN	115.09	1.85	GRUPO MEXICO-B	Mexico	MXN	80.91	-3.90

Per Turnover	Exchange	Amount (US\$)	Per Volume	Exchange	Volume
GRUPO F BANORT-O	Mexico	44,602,029	ITAU CORPBANCA	Chile	1,221,446,961
AMERICA MOVIL-L	Mexico	43,501,727	BANCO SANTANDER	Chile	94,232,335
WALMART DE MEXIC	Mexico	38,173,321	AMERICA MOVIL-L	Mexico	43,341,047
SOQUIMICH-B	Chile	34,918,528	BANCO DE CHILE	Chile	42,188,145
GRUPO MEXICO-B	Mexico	30,130,124	ENEL AMERICAS SA	Chile	26,596,190

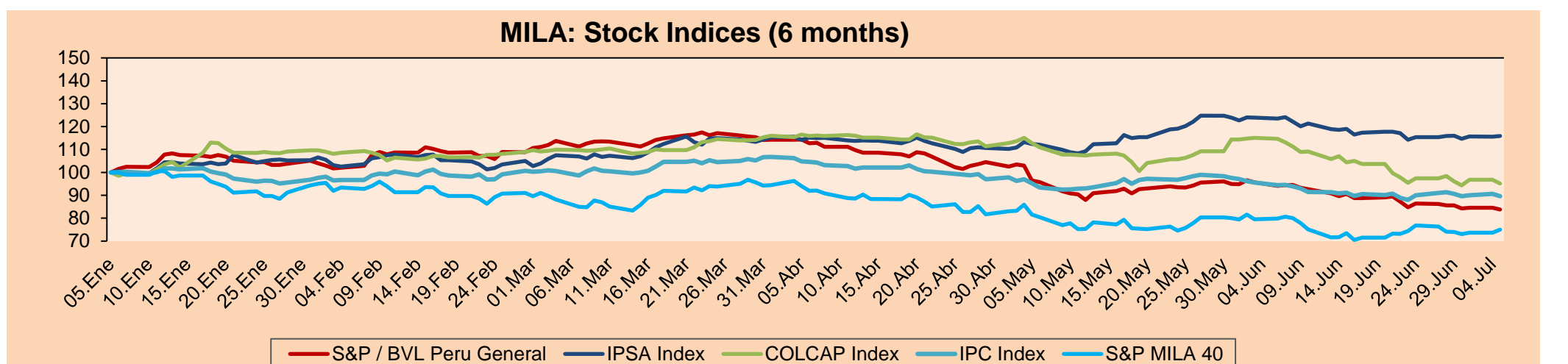
MILA

Peru: The BVL General index ended today's session with a negative result of -0.87%. The index maintains a negative annual cumulative trend of -13.36% in local currency, while the dollar-adjusted performance amounted to -10.20%. Next, the S&P/BVL Peru SEL varied by -1.57% while the S&P/BVL LIMA 25 by -1.24%. The PEN spot reached S/3.8584. Headline: Lima, Moquegua and Tacna top regional competitiveness index.

Chile: The IPSA index ended the day with a positive return of +0.30%. The most benefited sectors of the day were Industrials (+2.67%) and Materials (+1.26%). The best performing stocks were Corbanca (+7.55%) and Compañía Sudamericana de Vapores SA (+4.58%). Headline: Economists assume CPI increase of 1% or more in June, which would leave annual inflation close to 13%.

Colombia: The COLCAP index ended the session with a negative return of -1.79%. The sectors that lost the most during the day were Energy (+6.77%) and Utilities (-1.89%). The worst performing stocks were Ecopetrol SA (-7.53%) and Grupo Energía Bogotá SA ESP (-6.85%). Headline: Growth and unemployment on a positive note in the first half of the year.

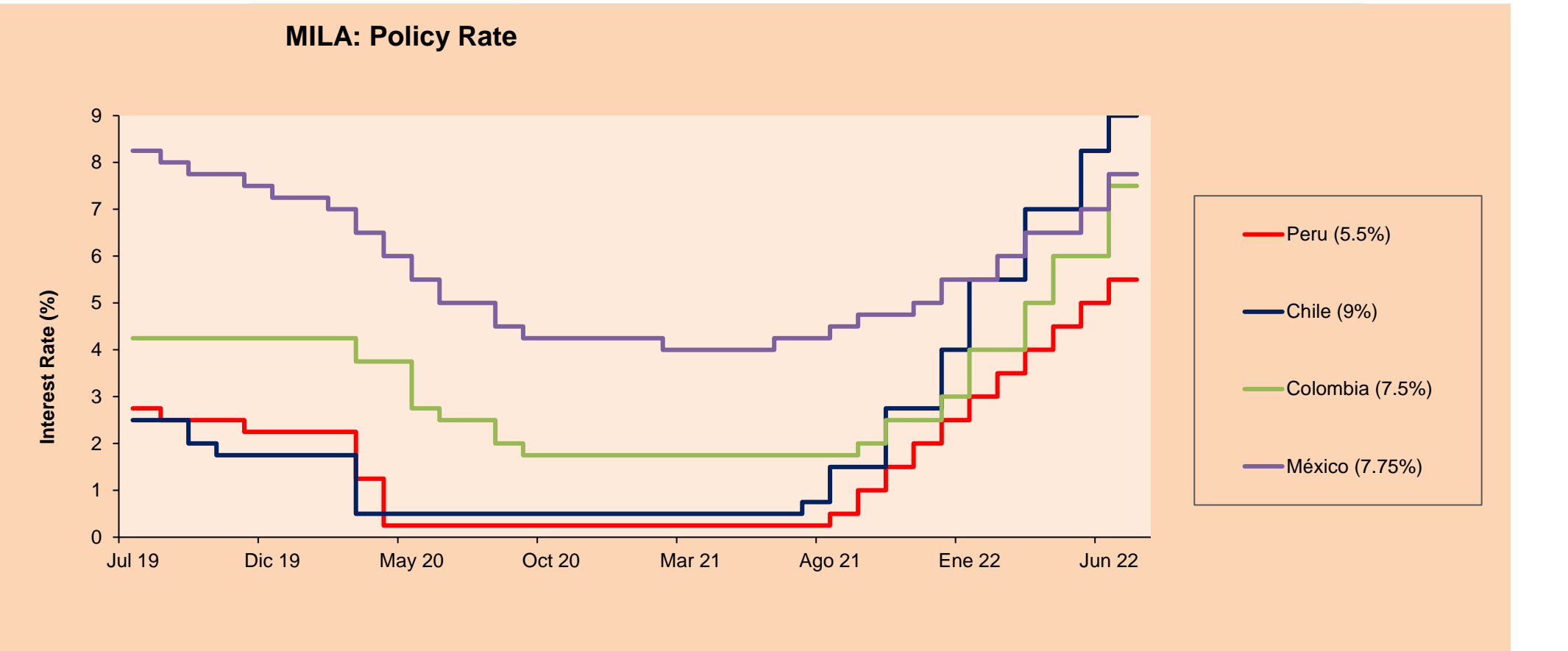
Mexico: The IPC index closed the day in negative territory at -1.11%. The sectors that lost the most during the day were Consumer Staples (-2.52%) and Materials (-1.44%). The worst performing stocks were Fomento Económico Mexicano SAB de CV (-7.01%) and Grupo México SAB de CV (-3.90%). Headline: Economic situation affects consumer confidence.



Base: 06/01/22=100
Source: Bloomberg

ETFs

ETFs	Curr.	Close	1D	5D	30 D	YTD	Exchange
▼ iShares MSCI All Peru Caped Index Fund	USD	24.96	-3.74%	-6.45%	-20.46%	-15.73%	NYSE Arca
▼ iShares MSCI All Chile Caped Index Fund	USD	23.52	-2.00%	-3.96%	-23.51%	1.86%	Cboe BZX
▼ Global X MSCI Colombia	USD	8.84	-3.28%	-5.45%	-27.01%	-11.54%	NYSE Arca
▼ iShares MSCI Mexico Capped	USD	45.68	-1.68%	-3.04%	-10.83%	-9.72%	NYSE Arca
▼ iShares MSCI Emerging Markets	USD	39.54	-0.78%	-2.25%	-6.68%	-19.06%	NYSE Arca
▼ Vanguard FTSE Emerging Markets	USD	41.07	-0.80%	-2.07%	-5.46%	-16.96%	NYSE Arca
▼ iShares Core MSCI Emerging Markets	USD	48.32	-0.78%	-2.29%	-7.49%	-19.28%	NYSE Arca
▼ iShares JP Morgan Emerging Markets Bonds	USD	54.98	-0.72%	-0.95%	-4.47%	-12.48%	Cboe BZX
▼ Morgan Stanley Emerging Markets Domestic	USD	4.42	-1.12%	-1.12%	-6.36%	-19.34%	New York



Source: Bloomberg

Capital Market Laboratory Coordinator: MS Javier Penny Pestana
Collaboration: Sebastian Ore, Fabrizio Lavalle, Miguel Solimano y Jhonatan Cueva
email: pulsobursatil@ulima.edu.pe
facebook: www.facebook.com/pulsobursatil.ul

LIMA

Stocks

	Ticker	Currency	Price	1D*	5D*	30D*	YTD*	Frequency	Volume (US\$)	Beta	Dividend Yield (%)	Price Earning	Market Cap. (M US\$)	Economic Sector*	Index Weight
▼	ALICORC1 PE**	S/.	5.05	-0.23%	0.79%	-8.03%	-10.65%	100.00%	9,774	0.80	16.53	11.32	1,115.89	Industrial	3.53%
-	ATACOCB1 PE**	S/.	0.09	0.00%	0.00%	-10.00%	-25.00%	31.58%	5	1.00	0.00	-	23.39	Mining	1.02%
-	BACKUS1 PE**	S/.	20.00	0.00%	-2.44%	-7.19%	-2.44%	94.74%	34,847	0.79	17.15	6.77	7,164.84	Industrial	0.82%
▼	BAP PE**	US\$	120.25	-0.62%	-2.69%	-14.25%	-2.85%	100.00%	179,693	1.31	3.33	-	9,562.28	Diverse	5.82%
▼	BVN PE**	US\$	6.59	-2.66%	-4.77%	-24.51%	-9.73%	100.00%	147,685	1.43	1.06	-	1,816.43	Mining	5.88%
▲	CASAGRC1 PE**	S/.	7.20	1.41%	0.00%	-10.00%	-20.88%	94.74%	11,144	1.18	75.02	4.31	157.18	Agricultural	1.31%
-	BBVAC1 PE**	S/.	1.70	0.00%	1.19%	6.25%	-6.08%	100.00%	7,815	0.81	6.79	6.48	2,977.68	Finance	2.85%
▼	CORARE1 PE**	S/.	1.31	-0.76%	-0.76%	-10.27%	-23.84%	94.74%	60,225	0.80	19.58	2.31	551.40	Industrial	1.72%
▲	CPACASC1 PE**	S/.	3.72	0.54%	-0.80%	-6.06%	-24.85%	100.00%	1,960	0.76	21.24	10.33	443.21	Industrial	2.38%
▼	CVERDEC1 PE**	US\$	25.50	-3.77%	-9.57%	-12.97%	-31.51%	100.00%	5,432	0.89	7.28	6.89	8,926.43	Mining	5.25%
-	ENGEPEC1 PE**	S/.	2.10	0.00%	0.96%	9.38%	1.45%	89.47%	31,194	0.78	14.94	7.83	1,303.80	Public Services	1.44%
-	ENDISPC1**	S/.	3.80	0.00%	0.00%	1.33%	-5.00%	47.37%	17	0.85	0.00	6.82	628.88	Public Services	0.98%
▼	FERREYC1 PE**	S/.	2.06	-1.90%	-2.37%	-3.74%	0.49%	100.00%	63,091	0.91	11.58	3.94	505.09	Diverse	4.90%
-	AENZAC1 PE**	S/.	0.94	0.00%	0.00%	-8.74%	-31.39%	89.47%	12	0.96	0.00	-	291.61	Diverse	4.05%
-	IFS PE**	US\$	22.90	0.00%	-0.43%	-16.73%	-14.71%	94.74%	8,807	0.98	0.00	-	2,643.07	Diverse	7.22%
-	INRETC1 PE**	US\$	25.75	0.00%	2.18%	-16.94%	-26.32%	100.00%	11,572	0.75	5.32	17.23	2,800.23	Diverse	5.28%
-	LUSURC1 PE**	S/.	15.79	0.00%	0.00%	6.69%	10.88%	42.11%	53	0.00	0.00	13.09	1,992.73	Public Services	1.81%
▼	MINSURI1 PE**	S/.	3.38	-6.11%	-9.38%	-25.71%	-14.43%	100.00%	19,704	1.11	12.84	1.24	2,525.48	Mining	3.09%
-	PML PE**	US\$	0.13	0.00%	0.00%	0.00%	8.33%	36.84%	1,300	1.13	0.00	-	34.37	Mining	2.12%
▼	SCCO PE**	US\$	47.65	-3.33%	-7.92%	-25.11%	-22.87%	89.47%	193,346	1.03	8.71	10.21	36,837.74	Industrial	2.12%
▲	SIDERC1 PE**	S/.	1.36	0.74%	0.74%	-7.48%	-15.00%	94.74%	9,832	0.69	46.10	3.20	246.73	Mining	2.14%
▼	TV PE**	US\$	0.34	-15.00%	-15.00%	-33.33%	-73.85%	100.00%	12,254	1.29	0.00	-	33.15	Industrial	1.43%
-	UNACEMC1 PE**	S/.	1.53	0.00%	1.32%	-5.56%	-36.25%	94.74%	3,061	1.05	7.19	-	720.94	Mining	2.93%
▼	VOLCABC1 PE**	S/.	0.48	-4.00%	-11.11%	-20.00%	-20.00%	100.00%	101,635	1.12	0.00	6.34	505.02	Industrial	3.00%
-	BROCALC1 PE**	S/.	4.70	0.00%	-4.28%	-32.76%	-9.62%	57.89%	1,365	0.00	2.40	34.19	197.94	Mining	5.90%
#####	RIMSEGC1 PE**	S/.	#N/A N/A	#¡VALOR!	#¡VALOR!	0.00%	#¡VALOR!	0.00%	430	0.00	0.00	-	#¡VALOR!	Finance	3.09%
▼	CORAREC1 PE**	US\$	2.12	-1.40%	-2.75%	0.00%	11.58%	63.16%	212,000	0.00	12.10	3.73	2,127.57	Mining	2.12%
-	ENGIEC1 PE**	S/.	5.40	0.00%	0.93%	-4.93%	-7.85%	21.05%	1,104	0.54	0.00	14.44	841.62	Diversas	2.12%
-	GBVLAC1 PE**	S/.	2.50	0.00%	0.00%	3.31%	-8.09%	21.05%	3,240	0.00	0.00	25.98	117.98	Diversas	2.14%

Quantity of shares: 28
Source: Bloomberg, Economática
* Bloomberg Industry Classification System
** PER is used in the stock market and original currency of the instrument

Up 3
Down 11
Hold 14

*Legend: Variation 1D: 1 Day; 5D: 5 Days; 1M: 1 Month; YTD: Var.% 12/31/21 to date

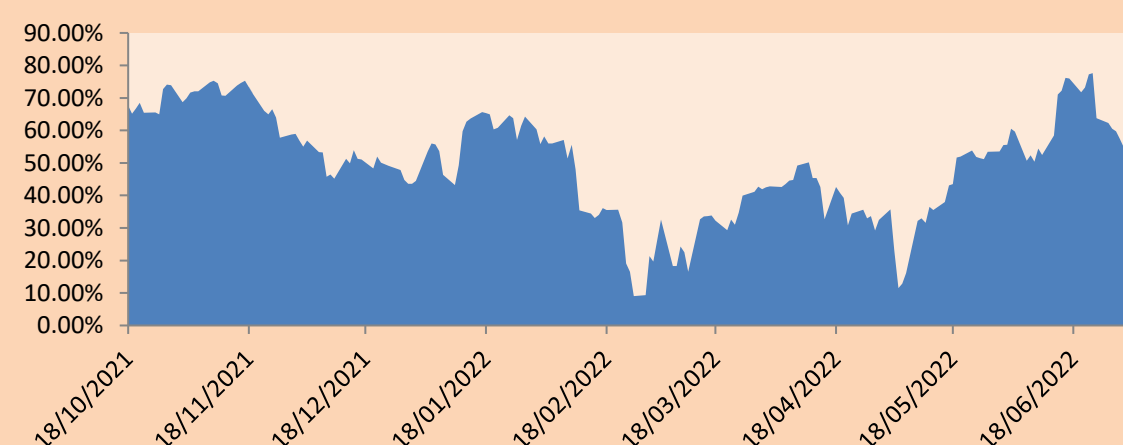
Sectorial Indices

		Close	1D*	5D*	30D*	YTD*	Beta
▼	S&P/BVLMining	320.62	-2.55%	-5.90%	-21.11%	-22.10%	0.99
▼	S&P/BVLConsumer	966.26	-0.31%	0.13%	-8.37%	-15.83%	0.51
▼	S&P/BVLIndustrials	219.59	-0.77%	-1.01%	-4.73%	-14.91%	0.75
▲	S&P/BVLFinancials	869.96	0.24%	-0.62%	-10.41%	-3.99%	1.38
▼	S&P/BVLConstruction	220.08	-0.23%	-0.35%	-5.19%	-22.34%	0.67
-	S&P/BVLPublicSvcs	540.29	0.00%	0.78%	0.43%	-1.50%	0.10
-	S&P/BVLElectricUtil	527.46	0.00%	0.79%	0.43%	-1.50%	0.10

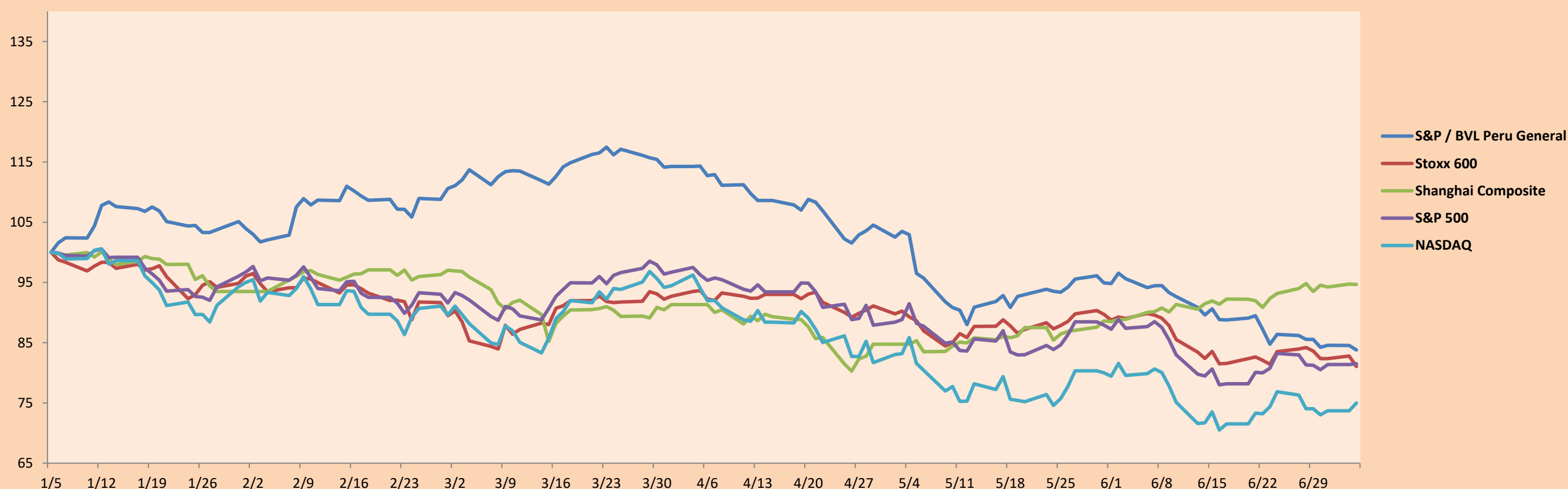
S&P/BVLConstructionTRPEN

*Legend: Variation 1D: 1 Day; 5D: 5 Days; 1M: 1 Month; YTD: Var.% 12/31/21 to date

Correlation Graph of Returns of Mining Index against Metallic Index of London (3 months)



Indices (6 months)



Base: 05/01/22=100
Source: Bloomberg

Capital Market Laboratory Coordinator: MS Javier Penny Pestana
Collaboration: Sebastian Ore, Fabrizio Lavalle, Miguel Solimano y Jhonatan Cueva
email: pulsobursatil@ulima.edu.pe
facebook: www.facebook.com/pulsobursatil.ul

SOVEREIGN RATING

RISK RATINGS

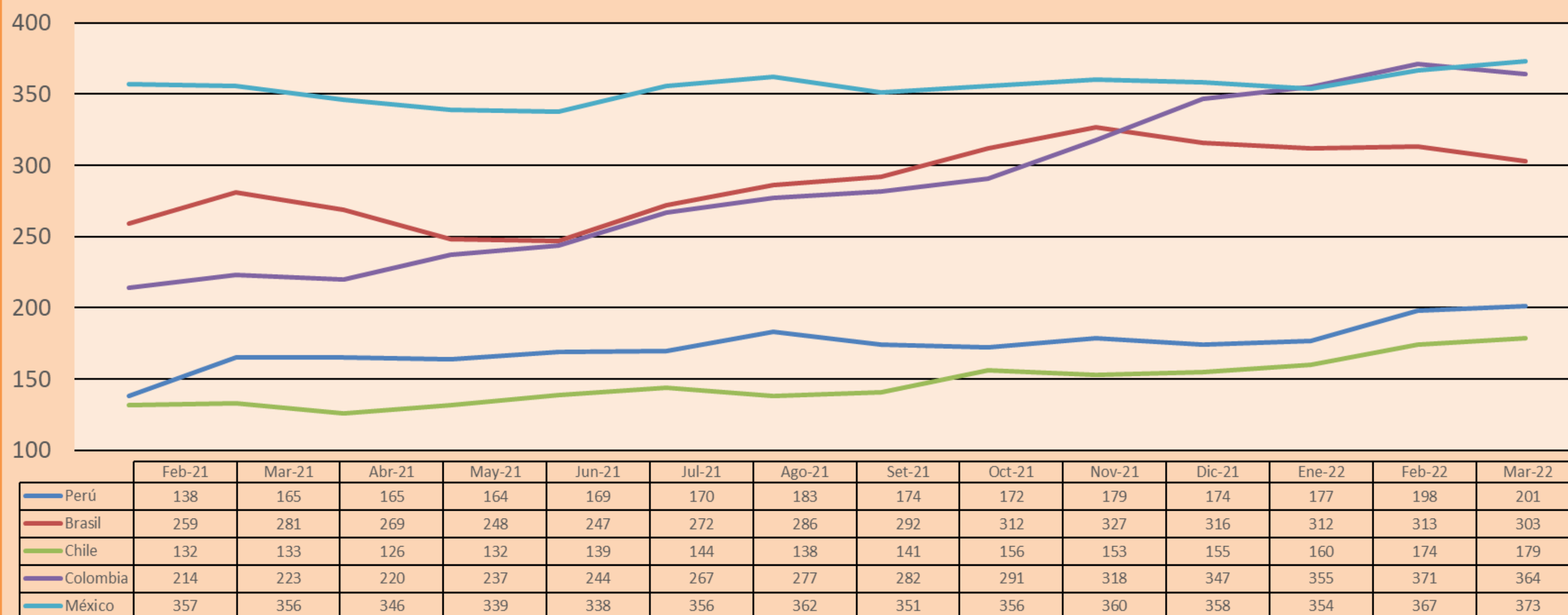
Moody's	S&P	Fitch	
Aaa	AAA	AAA	Prime
Aa1	AA+	AA+	High credit quality
Aa2	AA	AA	
Aa3	AA-	AA-	
A1	A+	A+	Medium-high grade, with low credit risk
A2	A	A	
A3	A-	A-	
Baa1	BBB+	BBB+	Moderate Credit Risk
Baa2	BBB	BBB	
Baa3	BBB-	BBB-	
Ba1	BB+	BB+	It has speculative elements and it is subject to substantial credit risk
Ba2	BB	BB	
Ba3	BB-	BB-	
B1	B+	B+	It is considered speculative and it has high credit risk
B2	B	B	
B3	B-	B-	
Caa1	CCC+	CCC	
Caa2	CCC		
Caa3	CCC-		
Ca	CC		
	C	DDD	Bad credit conditions and it is subject to high credit risk
	D		
	DD		
		D	Very close to default or in default

Source: Bloomberg

Latin America Credit Rating			
Clasificadora de riesgo			
Country	Moody's	Fitch	S&P
Peru	Baa1	BBB	BBB
México	Ba2	BB-	BB-
Venezuela	C	WD	NR
Brazil	Ba2	BB-	BB-
Colombia	Baa2	BB+	BB+
Chile	A1	A-	A
Argentine	Ca	WD	CCC+
Panama	Baa2	BBB-	BBB

Source: Bloomberg

LATAM Country Risk(bps)



Source: BCRP

Capital Market Laboratory Coordinator: MS Javier Penny Pestana
Collaboration: Sebastian Ore, Fabrizio Lavalle, Miguel Solimano y Jhonatan Cueva
email: pulsobursatil@ulima.edu.pe
facebook: www.facebook.com/pulsobursatil.ul