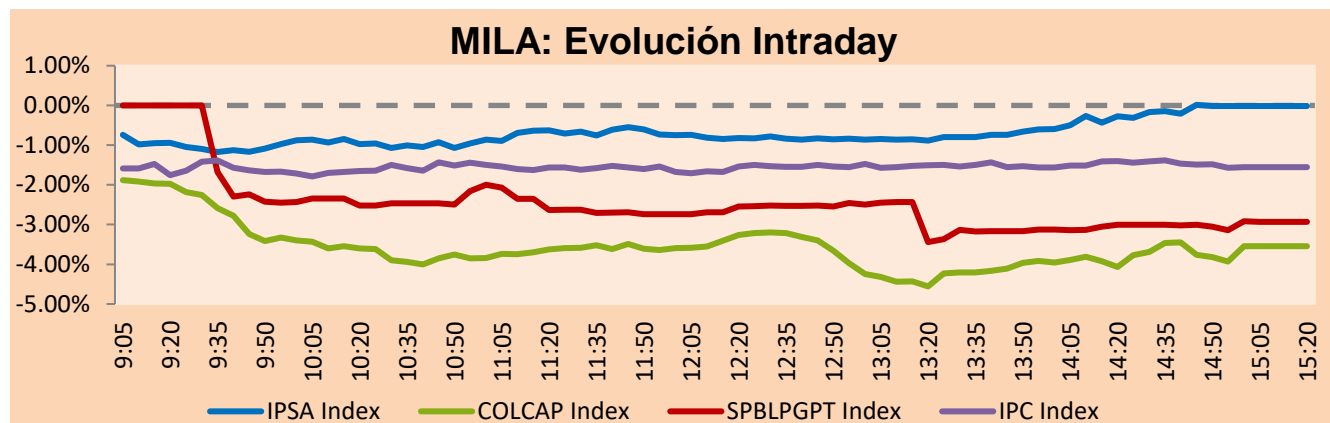


MILA

Lima, July 14, 2022

Main Indexes	Close	1 D	5 D	1 M	YTD	Cap. Burs. (US\$ bill)
▲ IPSA (Chile)	5,136.05	0.36%	0.68%	0.29%	19.21%	84.02
▲ IGPA (Chile)	27,256.04	0.56%	0.74%	0.97%	26.38%	96.92
▼ COLSC (Colombia)	850.07	-1.57%	-3.81%	-5.69%	-12.65%	4.83
▼ COLCAP (Colombia)	1,272.51	-3.55%	-5.76%	-15.23%	-9.81%	61.38
▼ S&P/BVL (Perú)*	17,752.60	-2.90%	-4.84%	-9.25%	-15.91%	78.49
▼ S&P/BVL SEL (Perú)	457.72	-3.32%	-5.97%	-11.65%	-18.78%	70.16
▼ S&P/BVL LIMA 25	25,188.31	-2.15%	-3.29%	-10.41%	-16.80%	77.71
▼ IPC (México)	46,741.31	-1.52%	-1.34%	-2.95%	-12.26%	292.87
▲ S&P MILA 40	412.02	0.71%	-2.09%	-15.45%	-7.38%	6,092.22

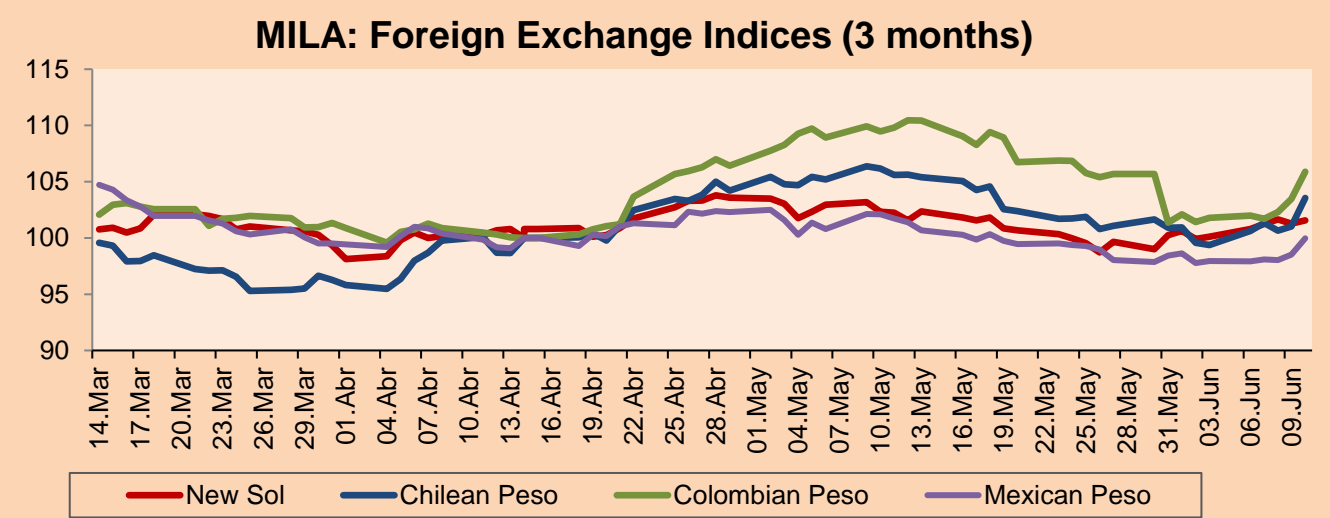
*Legend: Variation 1D: 1 day; 5D: 5 days; 1M: 1 Month; YTD: Var% 12/31/21 to date



Source: Bloomberg

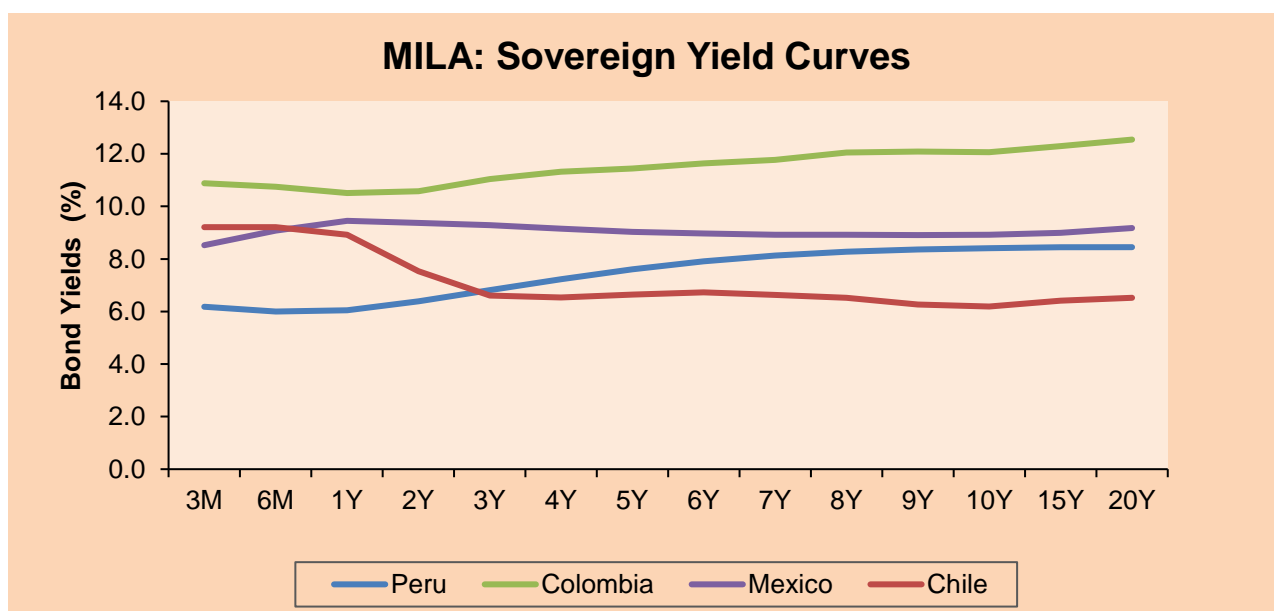
Currency	Price	1D*	5D*	30 D*	YTD*
▼ Sol (PEN)	3,9025	-1.30%	0.33%	3.89%	-2.42%
▲ Chilean Peso (CLP)	1,048.50	4.02%	10.24%	20.73%	23.06%
▲ Colombian Peso (COP)	4,493.45	0.07%	2.23%	13.25%	10.12%
▲ Mexican Peso (MXN)	20.80	0.34%	1.40%	1.04%	1.33%

*Legend: Variation 1D: 1 day; 5D: 5 days; 1M: 1 Month; YTD: Var% 12/31/21 to date



Base: 14/04/22=100
Source: Bloomberg

Fixed Income	Currency	Price	Bid Yield (%)	Ask Yield (%)	Duration
PERU 7.35 07/21/25	USD	107.788	4.62	4.48	2.63
PERU 4.125 08/25/27	USD	97.856	4.65	4.55	4.47
PERU 8.75 11/21/33	USD	126.557	5.58	5.54	7.60
PERU 6.55 03/14/37	USD	108.91	5.68	5.61	9.03
PERU 5.625 11/18/2050	USD	103.621	5.39	5.35	14.19
CHILE 2.25 10/30/22	USD	99.938	3.09	1.83	0.29
CHILE 3.125 01/21/26	USD	95.961	4.44	4.32	3.24
CHILE 3.625 10/30/42	USD	78.781	5.39	5.31	13.45
COLOM 11.85 03/09/28	USD	135.313	4.75	4.57	4.28
COLOM 10.375 01/28/33	USD	119.238	7.81	7.55	6.46
COLOM 7.375 09/18/37	USD	91.82	8.35	8.31	8.58
COLOM 6.125 01/18/41	USD	77.418	8.62	8.54	9.60
MEX 4 10/02/23	USD	77.418	8.623	8.542	9.6
MEX5.55 01/45	USD	91.396	6.29	6.25	12.01



Source: Bloomberg

Equity

Largest gains	Exchange	Currency	Price	▲%	Largest losses	Exchange	Currency	Price	▼%
COLBUN SA	Chile	CLP	71.00	4.57	GRUPO ARGOS SA	Colombia	COP	12700	-6.82
CENCOSUD SHOPPIN	Chile	CLP	885.80	3.45	CORFICOLOMBIANA	Colombia	COP	19150	-6.59
ENEL CHILE SA	Chile	CLP	23.50	3.25	ECOPETROL	Colombia	COP	2130	-6.04
BANCO CRED INVER	Chile	CLP	27848.00	3.08	CEMENTOS ARGOS	Colombia	COP	4000	-5.90
TRUST FIBRA UNO	Mexico	MXN	20.81	3.07	SOUTHERN COPPER	Peru	USD	45.76	-5.53

Per Turnover	Exchange	Amount (US\$)	Per Volume	Exchange	Volume
AMERICA MOVIL-L	Mexico	54,426,497	ITAU CORPBANCA	Chile	354,560,035
FOMENTO ECON-UBD	Mexico	52,071,099	BANCO SANTANDER	Chile	160,964,598
WALMART DE MEXIC	Mexico	48,911,547	ENEL CHILE SA	Chile	116,165,743
GRUPO F BANORT-O	Mexico	35,362,441	ENEL AMERICAS SA	Chile	96,762,277
GRUPO MEXICO-B	Mexico	31,185,112	BANCO DE CHILE	Chile	70,318,750

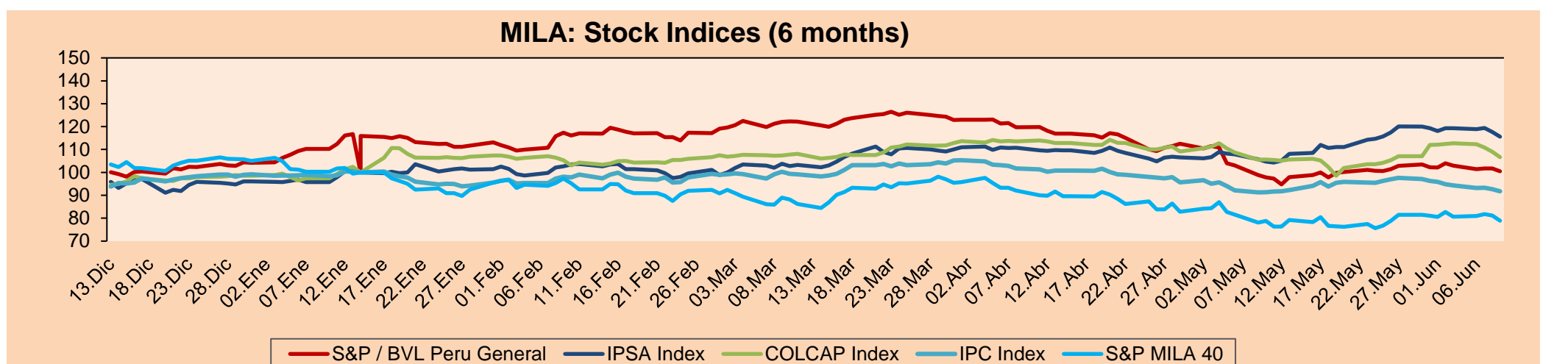
MILA

Peru: The BVL General index ended today's session with a negative result of -2.90%. The index maintains a negative annual cumulative trend of -15.91% in local currency, while the dollar-adjusted performance amounted to -13.83%. Next, the S&P/BVL Peru SEL varied by -3.35% while the S&P/BVL LIMA 25 by -2.21%. The spot PEN reached S/.3.903. Headline: Peru has no plans to issue bonds in the short term: minister Graham

Chile: The IPSA index ended the day with a positive return of +0.34%. The sectors that lost the most during the day were Financials (+1.31%) and Utilities (+1.24%). The best performing stocks were Colbún SA (+4.57%) and Cencosud Shopping SA (+3.45%). Headline: The unstoppable dollar closes above \$1.050 after its highest daily increase in the history of free floating in Chile.

Colombia: The COLCAP index ended the session with a negative return of -3.55%. The sectors that lost the most during the day were Energy (-6.02%) and Materials (-5.42%). The worst performing stocks were Inversiones Argos SA (-6.82%) and Corporación Financiera Colombi (-6.59%). Headline: "In order to contain inflation, Banco de la República will raise its interest rate to 9%: BBVA

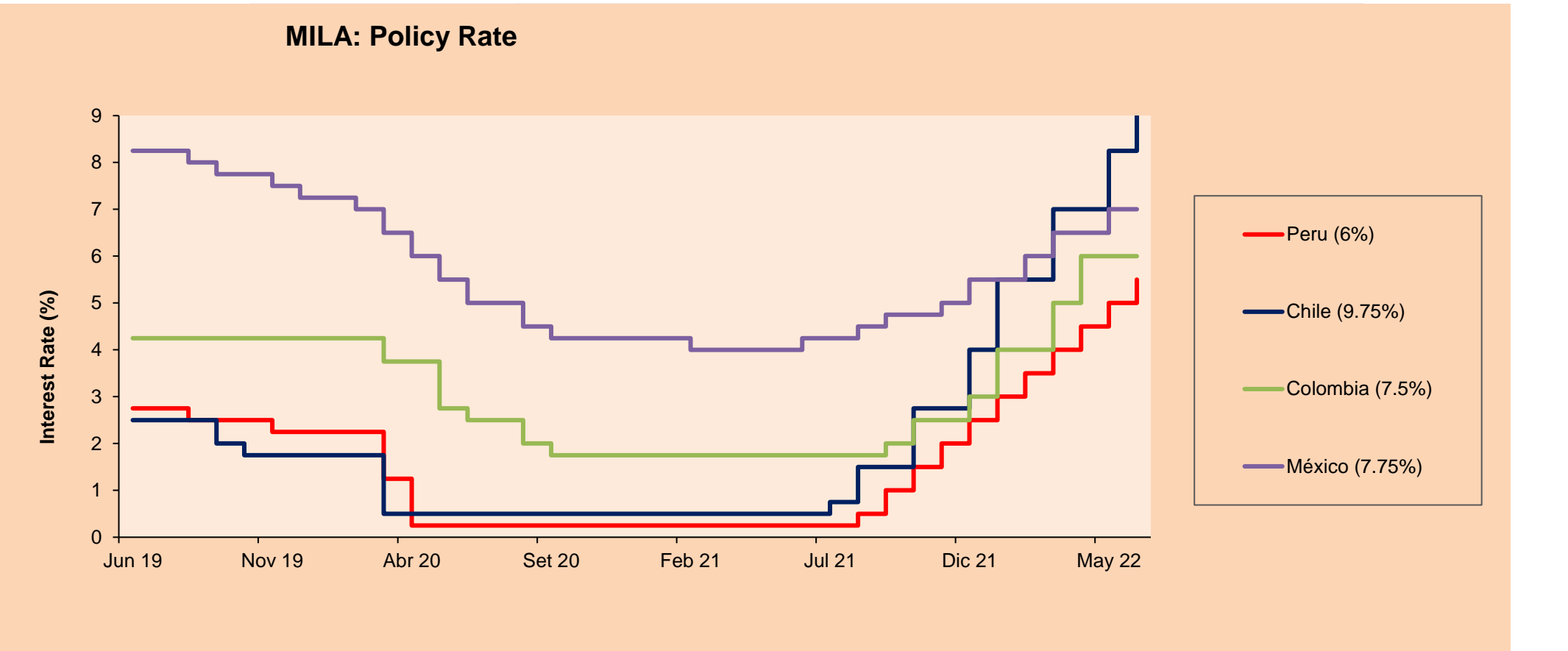
Mexico: The IPC index closed the day in negative territory at -1.52%. The worst performing sectors of the day were Materials (-3.08%) and Communication Services (-2.55%). The worst performing stocks were Grupo México SAB de CV (-4.29%) and América Móvil SAB de CV (-3.12%). Headline: Banxico's rate hike will slow down the economy in 2013, BBVA forecasts.



Base: 13/12/21=100
Source: Bloomberg

ETFs

ETFs	Curr.	Close	1D	5D	30 D	YTD	Exchange
▼ iShares MSCI All Peru Caped Index Fund	USD	23.55	-3.01%	-7.56%	-16.25%	-20.49%	NYSE Arca
▼ iShares MSCI All Chile Caped Index Fund	USD	22.17	-2.93%	-8.43%	-16.28%	-3.98%	Cboe BZX
▼ Global X MSCI Colombia	USD	8.06	-4.05%	-7.42%	-22.13%	-19.34%	NYSE Arca
▼ iShares MSCI Mexico Capped	USD	44.4	-1.60%	-2.52%	-2.42%	-12.25%	NYSE Arca
▼ iShares MSCI Emerging Markets	USD	38.43	-0.90%	-4.14%	-4.50%	-21.33%	NYSE Arca
▼ Vanguard FTSE Emerging Markets	USD	39.97	-0.67%	-4.01%	-4.79%	-19.19%	NYSE Arca
▼ iShares Core MSCI Emerging Markets	USD	47.1	-0.76%	-3.92%	-4.60%	-21.32%	NYSE Arca
▼ iShares JP Morgan Emerging Markets Bonds	USD	53.96	-0.48%	-2.55%	-1.96%	-14.10%	Cboe BZX
▼ Morgan Stanley Emerging Markets Domestic	USD	4.22	-0.47%	-2.99%	-6.64%	-22.99%	New York



Source: Bloomberg

LIMA

Stocks

	Ticker	Currency	Price	1D*	5D*	30D*	YTD*	Frequency	Volume (US\$)	Beta	Dividend Yield (%)	Price Earning	Market Cap. (M US\$)	Economic Sector*	Index Weight
▼	ALICORC1 PE**	S/.	4.95	-1.57%	-3.81%	-5.69%	-12.65%	100.00%	481,648	0.77	16.87	11.09	1,081.60	Industrial	3.53%
-	ATACOCB1 PE**	S/.	0.09	0.00%	0.00%	-10.00%	-25.00%	10.00%	1,453	1.00	0.00	-	23.12	Mining	1.02%
▲	BACKUSI1 PE**	S/.	20.00	1.01%	-2.44%	-11.11%	-2.44%	100.00%	26,640	0.79	17.15	6.46	7,084.05	Industrial	0.82%
▼	BAP PE**	US\$	115.50	-2.12%	-6.85%	-6.54%	-6.69%	100.00%	110,818	1.32	3.47	-	9,184.56	Diverse	5.82%
▼	BVN PE**	US\$	6.00	-3.54%	-7.55%	-18.37%	-17.81%	100.00%	207,369	1.39	1.17	-	1,653.81	Mining	5.88%
▼	CASAGRC1 PE**	S/.	7.80	-0.13%	4.98%	-4.88%	-14.29%	90.00%	43,203	1.21	69.25	4.67	168.36	Agricultural	1.31%
-	BBVAC1 PE**	S/.	1.46	0.00%	-6.41%	-5.81%	-12.05%	100.00%	48,926	0.78	7.23	6.07	2,528.47	Finance	2.85%
▲	CORAREI1 PE**	S/.	1.33	0.76%	0.76%	-11.33%	-22.67%	80.00%	9,723	0.85	19.29	2.34	536.99	Industrial	1.72%
▲	CPACASC1 PE**	S/.	3.63	0.28%	0.00%	-6.92%	-26.67%	100.00%	43,230	0.78	21.76	10.08	428.43	Industrial	2.38%
▲	CVERDEC1 PE**	US\$	24.87	-2.47%	-4.35%	-11.18%	-33.20%	100.00%	24,870	0.86	7.47	6.72	8,705.89	Mining	5.25%
-	ENGEPEC1 PE**	S/.	2.15	0.00%	-23.76%	-19.48%	-24.30%	100.00%	45,065	0.78	0.00	5.85	962.94	Public Services	1.44%
-	ENDISPC1**	S/.	3.65	0.00%	-3.95%	1.39%	-8.75%	25.00%	230	0.85	0.00	6.55	597.25	Public Services	0.98%
▼	FERREYC1 PE**	S/.	1.94	-3.48%	-4.43%	-8.49%	-5.37%	100.00%	37,686	0.88	12.29	3.71	470.30	Diverse	4.90%
▼	AENZAC1 PE**	S/.	0.83	-6.74%	-11.70%	-20.95%	-39.42%	100.00%	6,399	1.00	0.00	-	254.58	Diverse	4.05%
▼	IFS PE**	US\$	22.34	-2.02%	-4.16%	-10.57%	-16.80%	90.00%	30,750	0.93	10.74	-	2,578.44	Diverse	7.22%
▼	INRETC1 PE**	US\$	23.45	-2.29%	-8.72%	-19.97%	-32.90%	95.00%	88,207	0.79	5.84	15.86	2,550.11	Diverse	5.28%
-	LUSURC1 PE**	S/.	15.60	0.00%	-1.20%	3.86%	9.55%	60.00%	4	0.00	0.00	12.93	1,946.56	Public Services	1.81%
▲	MINSURI1 PE**	S/.	3.30	1.23%	0.00%	-25.00%	-16.46%	100.00%	4,927	1.11	13.28	1.20	2,437.90	Mining	3.09%
-	PML PE**	US\$	0.09	0.00%	-18.18%	-30.77%	-25.00%	25.00%	1,336	1.15	0.00	-	24.32	Mining	2.12%
▼	SCCO PE**	US\$	45.76	-5.53%	-10.87%	-19.29%	-25.93%	100.00%	90,835	1.05	9.07	9.81	35,376.60	Industrial	2.12%
▼	SIDERC1 PE**	S/.	1.40	-1.41%	2.94%	-2.78%	-12.50%	80.00%	1,441	0.70	44.78	3.29	251.12	Mining	2.14%
▼	TV PE**	US\$	0.35	-2.78%	9.38%	-25.53%	-73.08%	85.00%	59,125	1.28	0.00	-	34.63	Industrial	1.43%
-	UNACEMC1 PE**	S/.	1.61	0.00%	5.23%	-2.42%	-32.92%	70.00%	4,538	1.05	0.00	-	750.08	Mining	2.93%
-	VOLCABC1 PE**	S/.	0.47	0.00%	-6.00%	-22.95%	-21.67%	100.00%	27,780	1.20	0.00	6.11	485.74	Industrial	3.00%
▲	BROCALC1 PE**	S/.	4.65	1.09%	0.00%	-21.19%	-10.58%	15.00%	6,683	0.00	2.42	33.46	195.16	Mining	5.90%
#####	RIMSEGC1 PE**	S/.	#N/A N/A	#¡VALOR!	#¡VALOR!	0.00%	#¡VALOR!	0.00%	425	0.00	0.00	-	#¡VALOR!	Finance	3.09%
-	CORAREC1 PE**	US\$	2.08	0.00%	-1.89%	-4.59%	9.47%	45.00%	6,822	0.00	0.00	3.66	2,095.59	Mining	2.12%
-	ENGIEC1 PE**	S/.	5.40	0.00%	0.00%	-4.93%	-7.85%	25.00%	52	0.54	0.00	14.28	832.13	Diversas	2.12%
-	GBVLAC1 PE**	S/.	2.49	0.00%	0.00%	3.75%	-8.46%	25.00%	1,755	0.00	8.29	25.88	116.18	Diversas	2.14%

Quantity of shares: 28
Source: Bloomberg, Economática
* Bloomberg Industry Classification System
** PER is used in the stock market and original currency of the instrument

Up 5
Down 12
Hold 11

*Legend: Variation 1D: 1 Day; 5D: 5 Days, 1M: 1 Month; YTD: Var.% 12/31/21 to date

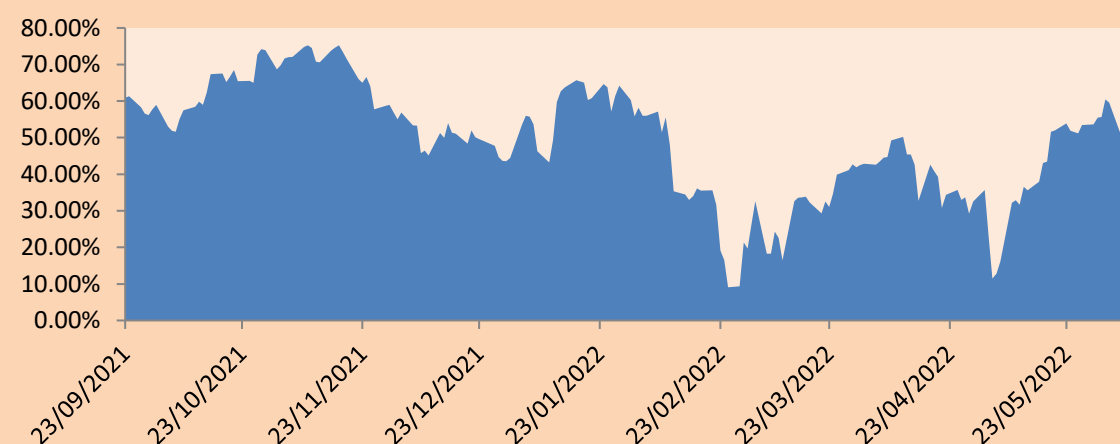
Sectorial Indices

		Close	1D*	5D*	30D*	YTD*	Beta
▼	S&P/BVLMining	308.77	-5.36%	-8.52%	-16.09%	-24.98%	1.00
▼	S&P/BVLConsumer	929.89	-1.92%	-4.53%	-12.66%	-19.00%	0.51
▼	S&P/BVLIndustrials	215.04	-1.59%	-1.31%	-7.27%	-16.67%	0.74
▼	S&P/BVLFinancials	846.10	-3.21%	-6.13%	-3.24%	-6.62%	1.38
▼	S&P/BVLConstruction	219.36	-0.73%	0.13%	-6.73%	-22.59%	0.66
-	S&P/BVLPublicSvcs	562.47	0.00%	4.76%	4.75%	2.55%	0.10
-	S&P/BVLElectricUtil	549.11	0.00%	4.76%	4.75%	2.55%	0.10

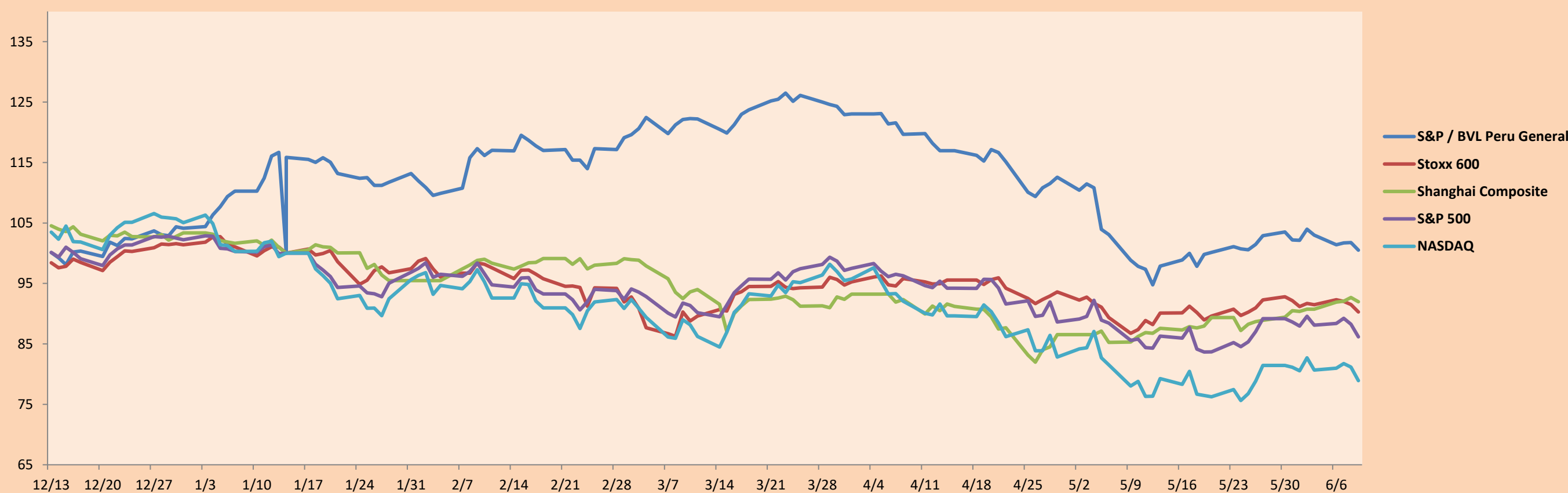
S&P/BVLConstructionTRPEN

*Legend: Variation 1D: 1 Day; 5D: 5 Days, 1M: 1 Month; YTD: Var.% 12/31/21 to date

Correlation Graph of Returns of Mining Index against Metallic Index of London (3 months)



Indices (6 months)



Base: 14/01/22=100
Source: Bloomberg

Capital Market Laboratory Coordinator: MS Javier Penny Pestana
Collaboration: Sebastian Ore, Fabrizio Lavalle, Miguel Solimano y Jhonatan Cueva
email: pulsobursatil@ulima.edu.pe
facebook: www.facebook.com/pulsobursatil.ul

SOVEREIGN RATING

RISK RATINGS

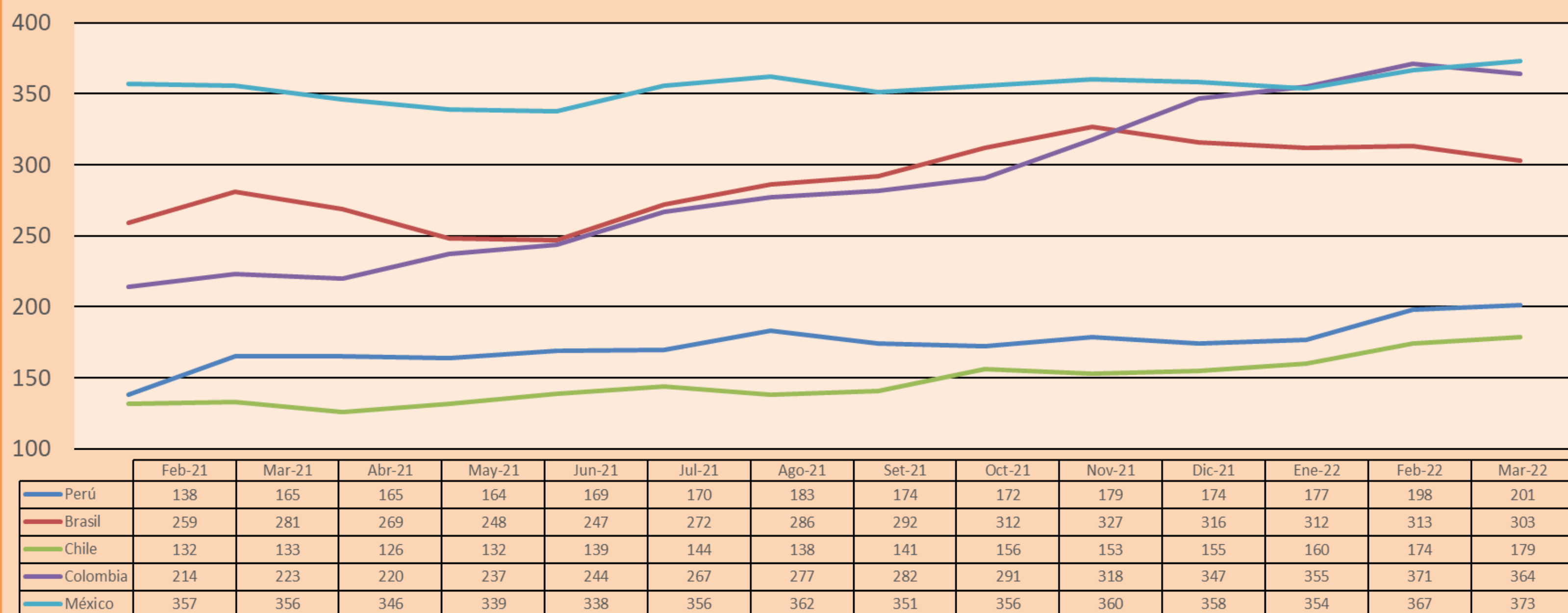
Moody's	S&P	Fitch	
Aaa	AAA	AAA	Prime
Aa1	AA+	AA+	High credit quality
Aa2	AA	AA	
Aa3	AA-	AA-	
A1	A+	A+	Medium-high grade, with low credit risk
A2	A	A	
A3	A-	A-	
Baa1	BBB+	BBB+	Moderate Credit Risk
Baa2	BBB	BBB	
Baa3	BBB-	BBB-	
Ba1	BB+	BB+	It has speculative elements and it is subject to substantial credit risk
Ba2	BB	BB	
Ba3	BB-	BB-	
B1	B+	B+	It is considered speculative and it has high credit risk
B2	B	B	
B3	B-	B-	
Caa1	CCC+	CCC	
Caa2	CCC		
Caa3	CCC-		
Ca	CC		
	C	DDD	Bad credit conditions and it is subject to high credit risk
C	D	DD	Very close to default or in default
		D	

Source: Bloomberg

Latin America Credit Rating			
Clasificadora de riesgo			
Country	Moody's	Fitch	S&P
Peru	Baa1	BBB	BBB
México	Ba2	BB-	BB-
Venezuela	C	WD	NR
Brazil	Ba2	BB-	BB-
Colombia	Baa2	BB+	BB+
Chile	A1	A-	A
Argentine	Ca	WD	CCC+
Panama	Baa2	BBB-	BBB

Source: Bloomberg

LATAM Country Risk(bps)



Source: BCRP

Capital Market Laboratory Coordinator: MS Javier Penny Pestana
Collaboration: Sebastian Ore, Fabrizio Lavalle, Miguel Solimano y Jhonatan Cueva
email: pulsobursatil@ulima.edu.pe
facebook: www.facebook.com/pulsobursatil.ul