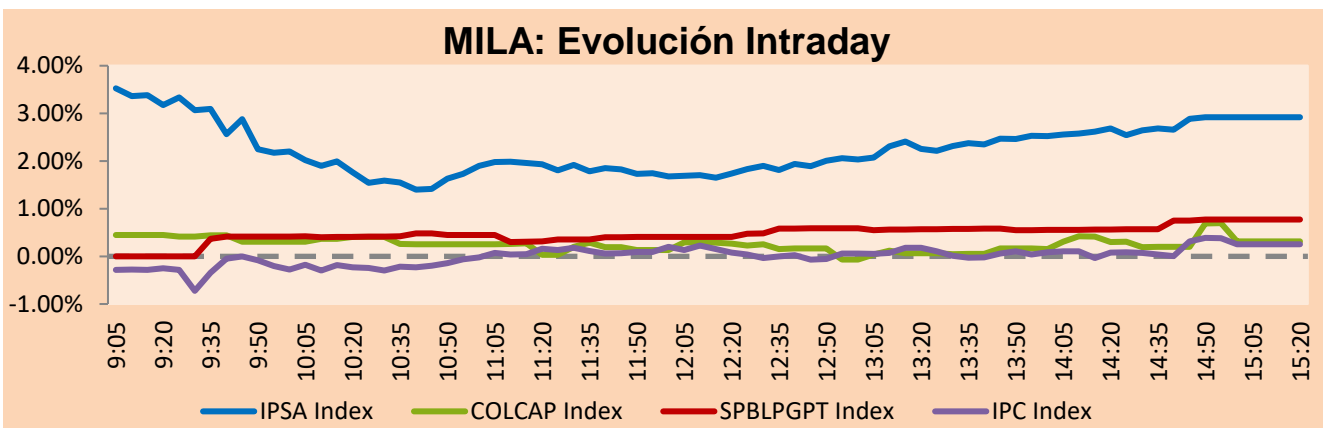


## MILA

Lima, Sep 5, 2022

Main Indexes	Close	1 D	5 D	1 M	YTD	Cap. Burs. (US\$ bill)
▲ IPSA (Chile)	5,779.25	2.23%	4.75%	10.88%	34.14%	110.68
▲ IGPA (Chile)	30,584.92	2.67%	4.19%	10.84%	41.81%	128.05
▲ COLSC (Colombia)	860.13	0.29%	-0.51%	-2.93%	-11.61%	3.40
▲ COLCAP (Colombia)	1,236.74	0.31%	-4.12%	-4.87%	-12.35%	57.92
▲ S&P/BVL (Perú)*	18,903.16	0.77%	-2.77%	-2.67%	-10.46%	77.49
▲ S&P/BVL SEL (Perú)	492.99	0.56%	-3.01%	-2.73%	-12.52%	68.75
▲ S&P/BVL LIMA 25	27,121.49	0.96%	-2.85%	-3.06%	-10.41%	76.74
▲ IPC (México)	46,026.08	0.30%	-0.64%	-1.49%	-13.60%	291.28
▲ S&P MILA 40	461.46	1.37%	-0.02%	4.97%	3.73%	5,820.83

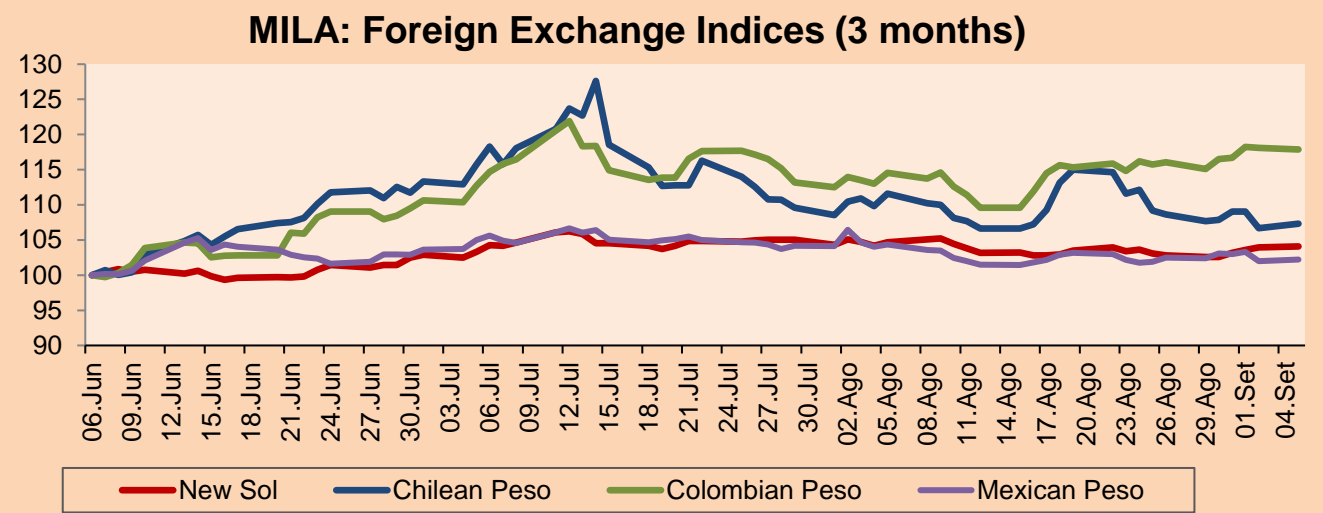
\*Legend: Variation 1D: 1 day; 5D: 5 days; 1M: 1 Month; YTD: Var% 12/31/21 to date



Source: Bloomberg

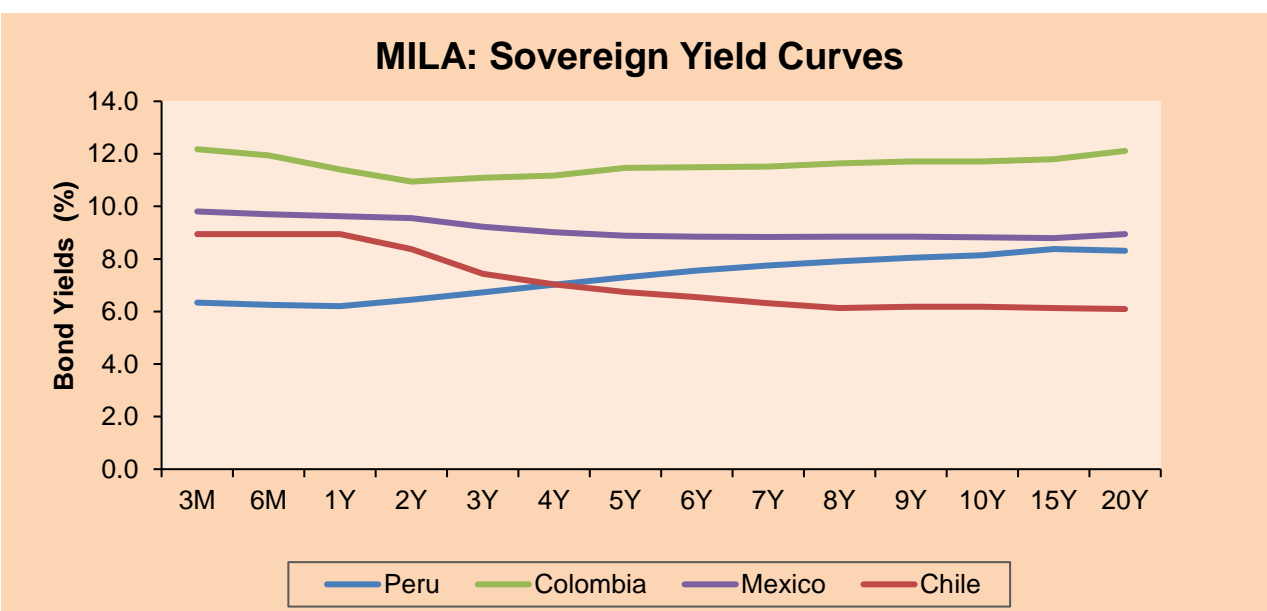
Currency	Price	1D*	5D*	30 D*	YTD*
▲ Sol (PEN)	3,884.3	0.09%	1.42%	-0.60%	-2.87%
▲ Chilean Peso (CLP)	881.70	0.59%	-0.34%	-3.84%	3.49%
▼ Colombian Peso (COP)	4,474.55	-0.18%	2.41%	2.91%	9.66%
▲ Mexican Peso (MXN)	19.98	0.19%	-0.19%	-2.06%	-2.66%

\*Legend: Variation 1D: 1 day; 5D: 5 days; 1M: 1 Month; YTD: Var% 12/31/21 to date



Base: 06/06/22=100  
Source: Bloomberg

Fixed Income	Currency	Price	Bid Yield (%)	Ask Yield (%)	Duration
PERU 7.35 07/21/25	USD	107.744	4.53	4.36	2.57
PERU 4.125 08/25/27	USD	98.056	4.61	4.52	4.42
PERU 8.75 11/21/33	USD	128.914	5.32	5.27	7.49
PERU 6.55 03/14/37	USD	109	5.68	5.59	8.88
PERU 5.625 11/18/2050	USD	103.012	5.44	5.39	13.97
CHILE 2.25 10/30/22	USD	100.015	3.06	1.20	0.14
CHILE 3.125 01/21/26	USD	95.952	4.51	4.35	3.14
CHILE 3.625 10/30/42	USD	76.479	5.63	5.54	13.12
COLOM 11.85 03/09/28	USD	121.823	7.08	6.93	3.98
COLOM 10.375 01/28/33	USD	119.523	7.70	7.54	6.60
COLOM 7.375 09/18/37	USD	94.459	8.05	7.98	8.51
COLOM 6.125 01/18/41	USD	79.809	8.32	8.25	9.92
MEX 4 10/02/23	USD	79.809	8.315	8.249	9.92
MEX5.55 01/45	USD	92.209	6.23	6.16	12.27



Source: Bloomberg

### Equity

Largest gains	Exchange	Currency	Price	▲%	Largest losses	Exchange	Currency	Price	▼%
VOLCAN CIA MIN-B	Peru	PEN	0.62	6.90	BUENAVENTURA-ADF	Peru	USD	5.39	-9.41
GRUPO AEROPORTUA	Mexico	MXN	130.80	5.34	GRUPO MEXICO-B	Mexico	MXN	76.42	-5.19
CMPC	Chile	CLP	1580.00	3.20	BANCO DAVIVIENDA	Colombia	COP	29500	-3.66
COLBUN SA	Chile	CLP	78.90	3.08	GRUPO NUTRESA SA	Colombia	COP	38580	-3.31
GRUPO CARSO-A1	Mexico	MXN	81.26	2.20	GRUPO F BANORT-O	Mexico	MXN	112.19	-3.28

Per Turnover	Exchange	Amount (US\$)	Per Volume	Exchange	Volume
AMERICA MOVIL-L	Mexico	47,324,238	ITAU CORPBANCA	Chile	919,819,300
GRUPO MEXICO-B	Mexico	45,462,583	BANCO SANTANDER	Chile	164,405,662
WALMART DE MEXIC	Mexico	43,691,962	ENEL CHILE SA	Chile	76,556,655
SOQUIMICH-B	Chile	28,797,029	ENEL AMERICAS SA	Chile	58,755,760
GRUPO F BANORT-O	Mexico	28,300,521	BANCO DE CHILE	Chile	56,298,545

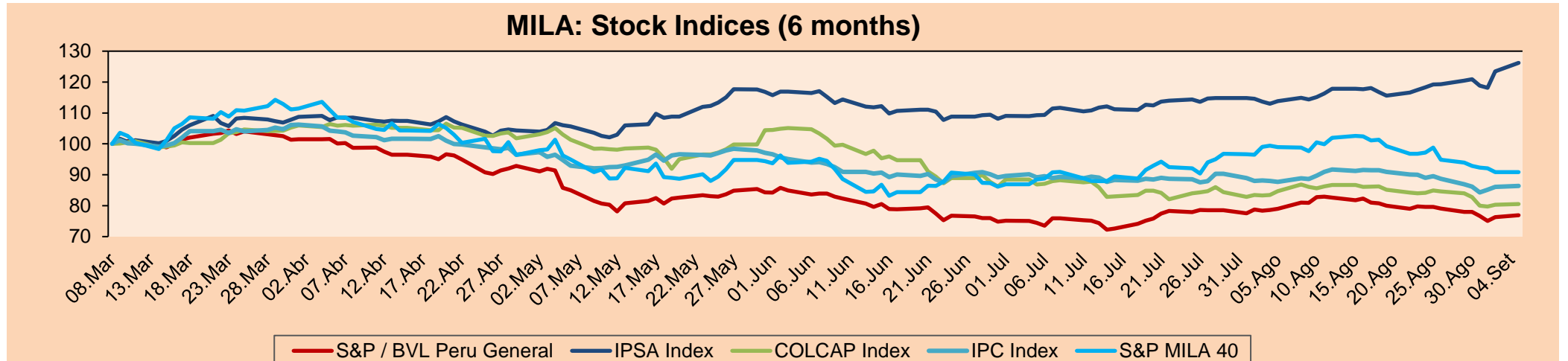
### MILA

Peru: The BVL General index ended today's session with a positive result +0.77%. The index maintains a negative annual cumulative trend of -10.46% in local currency, while the dollar-adjusted performance declined to -7.82%. Then, the S&P/BVL Peru SEL varied -0.28% while the S&P/BVL LIMA 25 varied +0.96%. The PEN spot reached S/3.8843 Headline: MEF seeks to increase the budget for the Health sector by 2023: will there be a real increase and new priorities?

Chile: The IPSA index ended the day with a positive return of +2.23%. The most benefited sectors of the day were Materials Technology (+4.07%) and Technology (+3.23%). The best performing stocks were Sociedad Química y Minera (+4.38%) and Cencosud (+6.07%). Headline: The resounding triumph of the Rejection pushes the Government to a strategic and cast change.

Colombia: The COLCAP index ended the session with a positive return of +0.31%. The sectors that benefited the most during the day were Consumer Staples (+1.32%) and Energy (+1.43%). The best performing stocks were Grupo de Inversiones Suramerica (+2.60%) and Cementos Argos (+2.38%). Headline: Energy prices have increased 25% in one year.

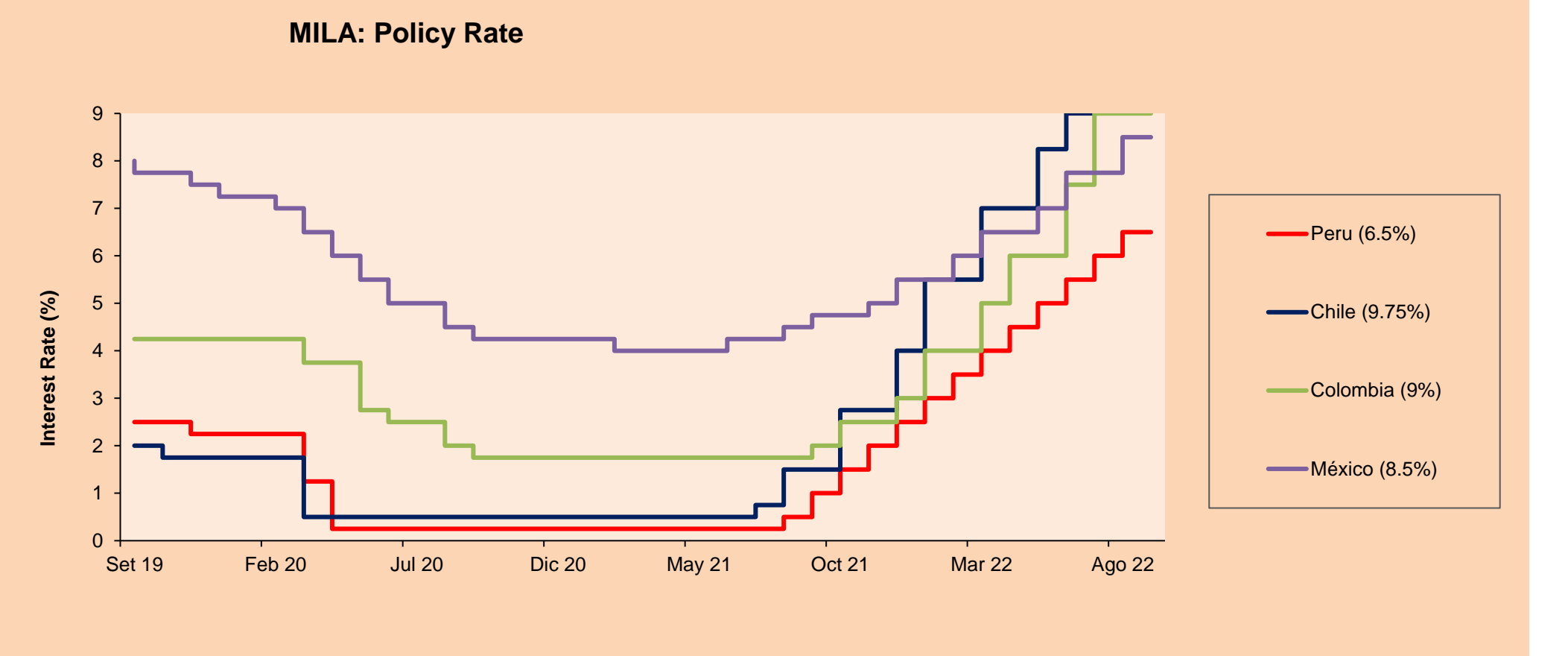
Mexico: The IPC index closed the day in positive territory, +0.30%. The sectors that benefited the most during the day were Industrials (+1.28%) and Financials (+1.15%). The best performing stocks were Operadora de Sites Mexicanos (+2.84%) and Grupo Cementos Chihuahua (+2.80%). Headline: What will happen to the peso if Banxico increases interest rates?



Base: 09/03/22=100  
Source: Bloomberg

### ETFs

ETFs	Curr.	Close	1D	5D	30 D	YTD	Exchange
iShares MSCI All Peru Caped Index Fund	USD	24.94	0.00%	-4.74%	-2.88%	-15.80%	NYSE Arca
iShares MSCI All Chile Caped Index Fund	USD	29.61	0.00%	4.89%	15.17%	28.24%	Cboe BZX
Global X MSCI Colombia	USD	9.02	0.00%	0.00%	2.85%	-9.74%	I/A Field Not Applica
iShares MSCI Mexico Capped	USD	45.58	0.00%	-0.74%	0.53%	-9.92%	NYSE Arca
iShares MSCI Emerging Markets	USD	38.76	0.00%	-2.52%	-3.25%	-20.66%	NYSE Arca
Vanguard FTSE Emerging Markets	USD	40.61	0.00%	-2.31%	-1.86%	-17.89%	NYSE Arca
iShares Core MSCI Emerging Markets	USD	47.76	0.00%	-2.35%	-2.77%	-20.21%	NYSE Arca
iShares JP Morgan Emerging Markets Bonds	USD	54.09	0.00%	-1.90%	-3.60%	-13.90%	Cboe BZX
Morgan Stanley Emerging Markets Domestic	USD	4.41	0.00%	-2.00%	-0.90%	-19.53%	New York



Source: Bloomberg

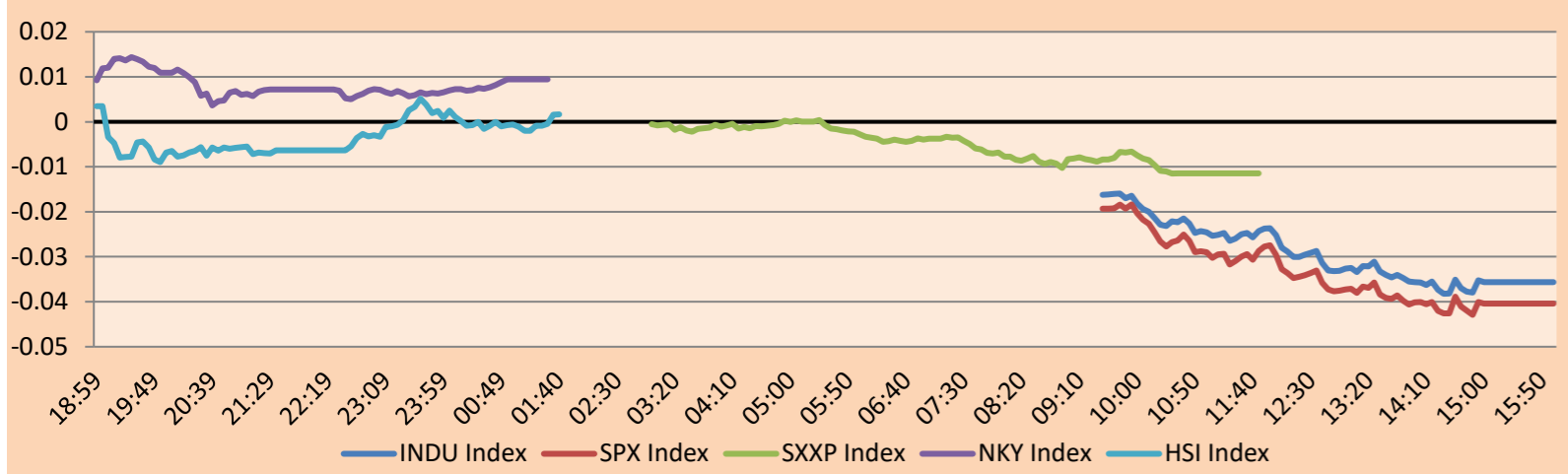
Capital Market Laboratory Coordinator: MS Javier Penny Pestana  
Collaboration: Mariafe Urrutia, Fedele Calle, Miguel Solimano y Maciell Esquerre.  
email: pulsobursatil@ulima.edu.pe  
facebook: www.facebook.com/pulsobursatil.ul

## WORLD

Main Indices	Close	1 D*	5 D*	1 M*	YTD*	Market Cap. (US\$ Mill.)
▼ Dow Jones (USA)	31,318.44	-1.07%	-2.99%	-4.53%	-13.81%	9,880,168
▼ Standard & Poor's 500 (EEUU)	3,924.26	-1.07%	-3.29%	-5.33%	-17.66%	34,406,547
▼ NASDAQ Composite (USA)	11,630.86	-1.31%	-4.21%	-8.11%	-25.66%	19,758,388
▼ Stoxx EUROPE 600 (Europe)	413.39	-0.62%	-2.19%	-5.12%	-15.25%	11,523,983
▼ DAX (Germany)	12,760.78	-2.22%	-1.03%	-5.99%	-19.67%	1,345,364
▲ FTSE 100 (United Kingdom)	7,287.43	0.09%	-1.88%	-2.05%	-1.32%	1,735,739
▼ CAC 40 (France)	6,093.22	-1.20%	-2.07%	-5.86%	-14.82%	2,003,101
▼ IBEX 35 (Spain)	7,862.70	-0.88%	-1.59%	-3.74%	-9.77%	528,658
▼ MSCI AC Asia Pacific Index	153.59	-0.49%	-2.25%	-4.45%	-20.47%	21,014,834
▼ HANG SENG (Hong kong)	19,225.70	-1.16%	-3.98%	-4.83%	-17.83%	3,069,762
▲ SHANGHAI SE Comp. (China)	3,199.91	0.42%	-1.26%	-0.84%	-12.08%	6,445,724
▲ NIKKEI 225 (Japan)	27,619.61	-0.11%	-0.93%	-1.97%	-4.07%	3,311,034
▲ S&P / ASX 200 (Australia)	6,852.22	0.34%	-1.63%	-2.33%	-7.96%	1,554,503
▼ KOSPI (South Korea)	2,403.68	-0.24%	-0.96%	-3.50%	-19.28%	1,334,288

\*Legend: Variation 1D: 1 Day; 5D: 5 Days; 1M: 1 Month; YTD: Var.% 12/31/21 to date

### Mercado Evolución Intraday (var %)

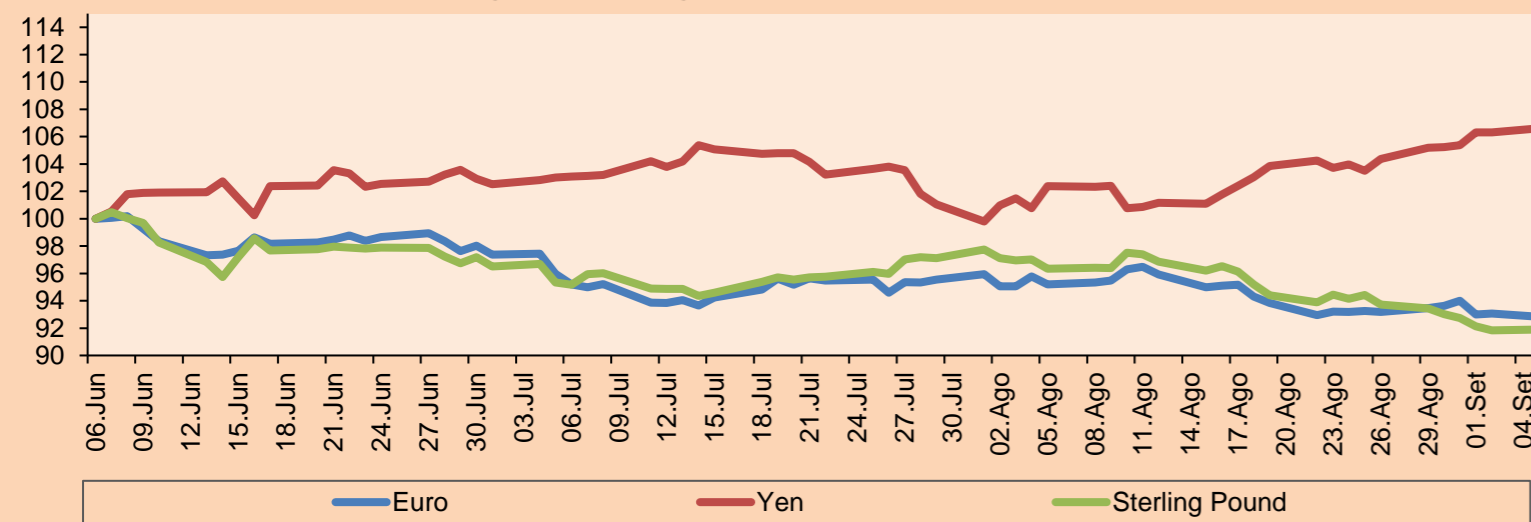


Source: Bloomberg

Currency	Price	1 D*	5 D*	1 M*	YTD*
▼ Euro	0.9929	-0.25%	-0.68%	-2.49%	-12.67%
▲ Yen	140.6000	0.29%	1.36%	4.14%	22.18%
▲ Sterling Pound	1.1517	0.07%	-1.64%	-4.61%	-14.89%
▲ Yuan	6.9340	0.49%	0.36%	2.55%	9.09%
▼ Hong Kong Dollar	7.8492	0.00%	0.02%	-0.01%	0.67%
▼ Brazilian Real	5.1533	-0.32%	2.47%	-0.21%	-7.58%
▲ Argentine Peso	140.2025	0.75%	1.37%	5.48%	36.47%

\*Legend: Variation 1D: 1 Day; 5D: 5 Days; 1M: 1 Month; YTD: Var.% 12/31/21 to date

### Foreign Exchange Indices (3 months)

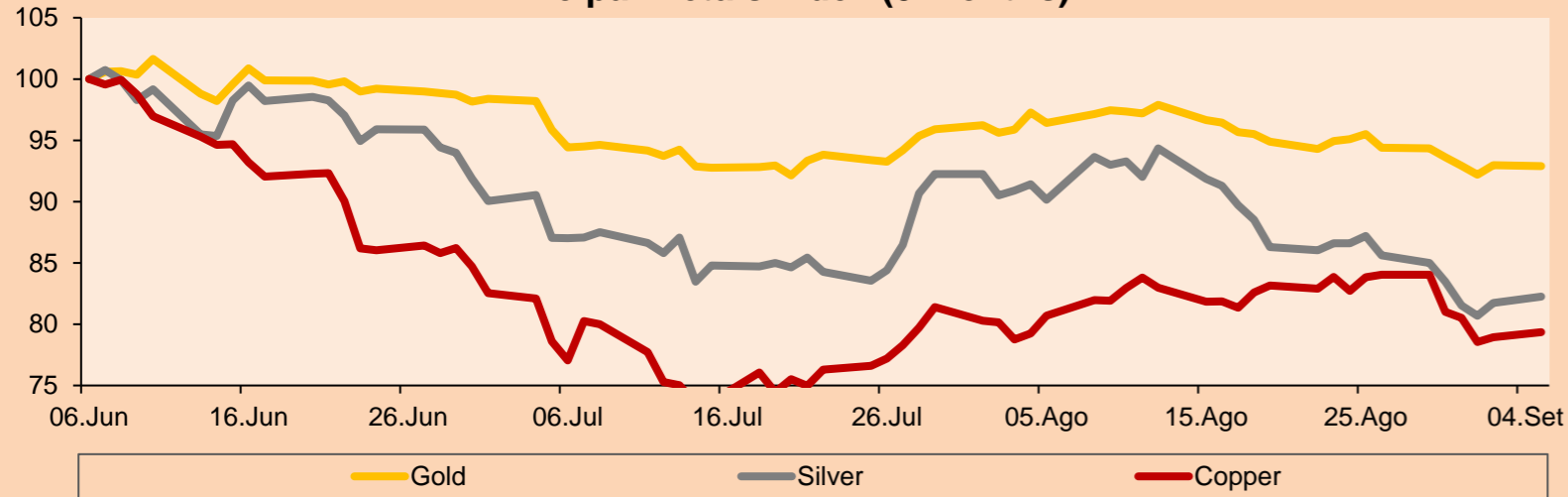


Base: 06/06/22=100  
Source: Bloomberg

Commodities	Close	1 D*	5 D*	1 M*	YTD*
▼ Oro (US\$ Oz. T) (LME)	1,710.40	-0.10%	-1.54%	-3.67%	-6.49%
▲ Plata (US\$ Oz. T) (LME)	18.16	0.64%	-3.23%	-8.74%	-22.10%
▲ Cobre (US\$ TM) (LME)	7,731.00	0.52%	-5.58%	-1.67%	-20.63%
▲ Zinc (US\$ TM) (LME)	3,241.50	2.17%	-11.11%	-9.82%	-9.71%
- Petróleo WTI (US\$ Barril) (NYM)	86.87	0.00%	-10.45%	-1.37%	22.40%
▲ Estaño (US\$ TM) (LME)	21,752.62	2.17%	-12.78%	-11.63%	-44.75%
▼ Plomo (US\$ TM) (LME)	1,873.25	-0.64%	-5.56%	-10.57%	-19.87%
- Azúcar #11 (US\$ Libra) (NYB-ICE)	18.15	0.00%	-1.57%	1.17%	-1.14%
- Cacao (US\$ TM) (NYB-ICE)	2,416.00	0.00%	0.25%	3.20%	-5.63%
- Café Arábica (US\$ TM) (NYB-ICE)	228.80	0.00%	-3.30%	10.85%	2.53%

\*Leyenda: Variación 1D: 1 Día; 5D: 5 Días; 1M: 1 Mes; YTD: Var.% 31/12/21 a la fecha

### Principal Metals Index (3 months)



Base: 06/06/22=100  
Source: Bloomberg

## Equity

Germany (Stocks from DAX Index)

Largest gains	Curr.	Price	▲%	Exchange	Largest losses	Curr.	Price	▼%	Exchange
PUM GY	EUR	60.5	-1.34	Xetra	HEI GY	EUR	44.81	-4.13	Xetra
ADS GY	EUR	145.2	-2.08	Xetra	DBK GY	EUR	8.181	-4.57	Xetra
DTG GY	EUR	24.705	-4.50	Xetra	LIN GY	EUR	275.8	-3.02	Xetra
DB1 GY	EUR	167.55	-1.59	Xetra	CON GY	EUR	54.86	-5.87	Xetra

Europe (Stocks from STOXX EUROPE 600)

Largest gains	Curr.	Price	▲%	Exchange	Largest losses	Curr.	Price	▼%	Exchange
TKWY NA	EUR	15.87	-3.95	EN Amsterdam	MRO LN	GBp	132.25	-0.90	Londres
HSBA LN	GBp	536.8	0.36	Londres	GRF SQ	EUR	11.505	-2.67	Soc.Bol SIBE
RHM GY	EUR	156.6	3.09	Xetra	SBBB SS	SEK	15.495	-3.16	Stockholm
AT1 GY	EUR	2.815	-2.90	Xetra	LIGHT NA	EUR	28.2	-3.16	EN Amsterdam

## Global Overview:

### United States:

The U.S. market didn't work today.

### Europe:

The main European indices ended the session with negative returns, after Russia disrupted the flow of gas through the Nord Stream 1 pipeline to Europe, triggering concerns about energy prices and growth and prompting governments to announce emergency measures. The pan-European STOXX 600 index ended with losses, in the face of a new wave of selling pressure due to record inflation and rising expectations of an interest rate hike by the European Central Bank, which is expected to hike by 75 basis points to curb inflation. The British market, reflected in the FTSE 100, rose slightly this session, thanks to gains in commodity stocks, as investors awaited the appointment of Liz Truss as the new British Prime Minister, against the backdrop of a deteriorating economy. Meanwhile, the DAX index closed in negative territory, following Gazprom's announcement last Friday that the pipeline to Germany would remain closed indefinitely, against expectations that it would restart on Saturday after three days of maintenance work. Shares of Germany's largest Russian gas importer Uniper fell 11%, Fortum was down 8.9% and utility PNE was down 4.1%. The French market also closed lower this session in the face of economic conditions and investor concerns. Thus, FTSE 100 +0.09%; CAC 40 -1.20%; DAX -2.22%; STOXX 600 -0.62% ended at mostly negative levels.

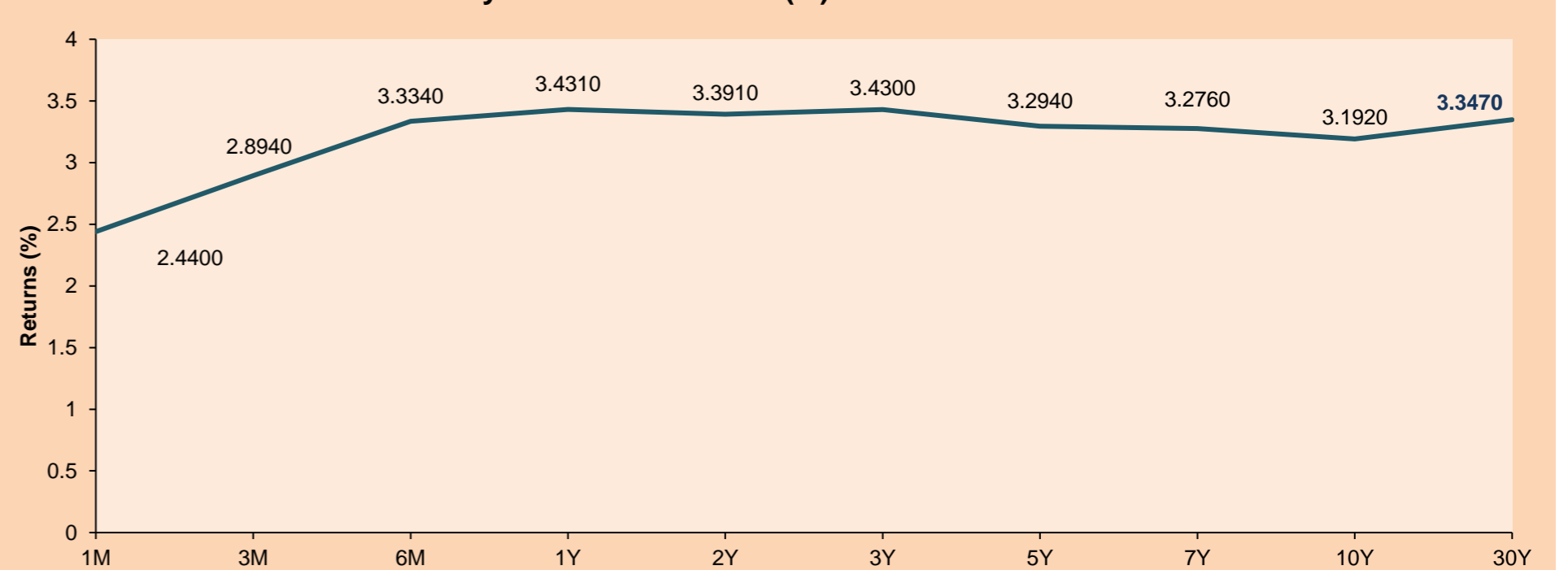
### Asia:

Major Asian indices closed with mostly negative returns. The Chinese market closed in negative territory due to COVID-related restrictions and Yuan weakness. Foreign investors dumped Chinese stocks after the Yuan's lowest drop in two years. Meanwhile, Shanghai stocks concluded higher thanks to a boost from energy companies. The Hang Seng index ended lower amid tighter COVID-19 restrictions in cities such as Chengdu. Hong Kong-listed tech giants fell 2%. The South Korean market continues to trend lower in the face of a stronger dollar and concerns about Europe's energy struggles. On the corporate side, tech giant Samsung Electronics fell 0.70%, SK Hynix lost 0.65% and LG Energy rose 0.21%. In addition, the won hit a more than 13-year low. The Japanese market fell for the fourth session due to weakness in the Wall Street stock market. The stocks that led this loss were the clothing retailer Uniqlo, which fell 1.24%, while the energy sector gained an average of 1.06% after oil prices soared. The Australian market closed higher thanks to higher commodity prices and the ability of companies such as BHP Group (+3.2%) and Rio Tinto (+1.8%) to maintain healthy margins and pay dividends. Likewise, the mining sector led the gains with a 2.1% increase. Thus, NIKKEI -0.11%; HANG SENG -1.16%; CSI 300 -0.20%; S&P/ASX 200 +0.34%; KOSPI -0.24%, SHANGAI COMPOSITE +0.42% ended with mostly negative performances.

## ETFs

	Curr.	Close	1D	5D	30 D	YTD	Exchange
SPDR S&P 500 ETF TRUST	USD	392.24	0.00%	-2.58%	-5.13%	-17.42%	NYSE Arca
ISHARES MSCI EMERGING MARKET	USD	38.76	0.00%	-2.52%	-3.25%	-20.66%	NYSE Arca
ISHARES IBOXX HIGH YLD CORP	USD	74.31	0.00%	-1.60%	-4.78%	-14.60%	NYSE Arca
FINANCIAL SELECT SECTOR SPDR	USD	32.89	0.00%	-1.76%	-2.37%	-15.77%	NYSE Arca
VANECK GOLD MINERS ETF	USD	23.79	0.00%	-3.33%	-9.47%	-25.73%	NYSE Arca
ISHARES RUSSELL 2000 ETF	USD	180.09	0.00%	-3.82%	-5.61%	-19.04%	NYSE Arca
SPDR GOLD SHARES	USD	159.26	0.00%	-1.61%	-3.65%	-6.84%	NYSE Arca
ISHARES 20+ YEAR TREASURY BO	USD	110.22	0.00%	-2.18%	-5.37%	-25.62%	NASDAQ GM
INVESCO QQQ TRUST SERIES 1	USD	295.17	0.00%	-3.04%	-8.26%	-25.81%	NASDAQ GM
ISHARES BIOTECHNOLOGY ETF	USD	121.19	0.00%	-0.75%	-7.80%	-20.59%	NASDAQ GM
ENERGY SELECT SECTOR SPDR	USD	79.96	0.00%	-4.91%	9.41%	44.07%	NYSE Arca
PROSHARES ULTRA VIX ST FUTUR	USD	10.28	0.00%	-0.29%	4.05%	-17.30%	Cboe BZX
UNITED STATES OIL FUND LP	USD	71.43	0.00%	-9.23%	-0.15%	31.40%	NYSE Arca
ISHARES MSCI BRAZIL ETF	USD	30.87	0.00%	-4.40%	3.76%	9.98%	NYSE Arca
SPDR S&P OIL & GAS EXP & PR	USD	142.40	0.00%	-5.59%	10.34%	48.53%	NYSE Arca
UTILITIES SELECT SECTOR SPDR	USD	74.60	0.00%	-1.76%	0.50%	4.22%	NYSE Arca
ISHARES US REAL ESTATE ETF	USD	93.21	0.00%	-2.95%	-5.42%	-19.74%	NYSE Arca
SPDR S&P BIOTECH ETF	USD	83.73	0.00%	-0.27%	-9.28%	-25.21%	NYSE Arca
ISHARES IBOXX INVESTMENT GRA	USD	108.39	0.00%	-1.72%	-4.10%	-18.21%	NYSE Arca
ISHARES JP MORGAN USD EMERGI	USD	85.08	0.00%	-1.09%	-3.83%	-21.99%	NASDAQ GM
REAL ESTATE SELECT SECT SPDR	USD	41.28	0.00%	-3.12%	-5.58%	-20.32%	NYSE Arca
ISHARES CHINA LARGE-CAP ETF	USD	29.26	0.00%	-3.81%	-2.92%	-20.01%	NYSE Arca
CONSUMER STAPLES SPDR	USD	72.56	0.00%	-2.38%	-2.79%	-5.90%	NYSE Arca
VANECK JUNIOR GOLD MINERS	USD	29.29	0.00%	-4.09%	-13.19%	-30.15%	NYSE Arca
SPDR BLOOMBERG HIGH YIELD BO	USD	91.59	0.00%	-1.73%	-4.92%	-15.64%	NYSE Arca
VANGUARD REAL ESTATE ETF	USD	91.88	0.00%	-3.04%	-5.60%	-20.80%	NYSE Arca
GRAYSCALE BITCOIN TRUST BTC	USD	12.38	0.00%	-1.67%	-13.00%	-63.85%	OTC US

### USA Treasury Bonds Yield Curve (%)



Source: Bloomberg

Capital Market Laboratory Coordinator: MS Javier Penny Pestana  
Collaboration: Maríafe Urrutia, Fedele Calle, Miguel Solimano y Maciel Esquerre  
email: pulsobursatil@ulima.edu.pe  
facebook: www.facebook.com/pulsobursatil.ul

# LIMA

## Stocks

	Ticker	Currency	Price	1D*	5D*	30D*	YTD*	Frequency	Volume (US\$)	Beta	Dividend Yield (%)	Price Earning	Market Cap. (M US\$)	Economic Sector*	Index Weight
▲	ALICORC1 PE**	S/.	5.59	0.29%	-0.51%	-2.93%	-11.61%	100.00%	5,880	0.88	4.47	9.45	1,226.79	Industrial	3.53%
-	ATACOB1 PE**	S/.	0.08	0.00%	0.00%	-11.11%	-33.33%	15.79%	20	#N/A N/A	0.00	-	22.47	Mining	1.02%
▲	BACKUS1 PE**	S/.	21.85	4.05%	0.00%	0.23%	6.59%	78.95%	2,548	0.79	15.70	6.80	7,569.59	Industrial	0.82%
-	BAP PE**	US\$	126.20	0.00%	-3.10%	-3.72%	1.96%	89.47%	29,642	1.25	0.00	-	10,035.42	Diverse	5.82%
▲	BVN PE**	US\$	5.78	1.76%	7.24%	3.40%	-20.82%	100.00%	2,999	1.40	1.21	-	1,593.17	Mining	5.88%
-	CASAGRC1 PE**	S/.	8.25	0.00%	-4.07%	-0.60%	-9.34%	84.21%	707	1.31	0.00	5.47	178.91	Agricultural	1.31%
-	BBVAC1 PE**	S/.	1.48	0.00%	-1.33%	-5.13%	-10.84%	89.47%	7,998	0.73	7.14	5.51	2,812.77	Finance	2.85%
▲	CORARE1 PE**	S/.	1.40	2.94%	-6.04%	-0.71%	-18.60%	89.47%	3,511	0.91	13.32	2.83	503.80	Industrial	1.72%
▲	CPACASC1 PE**	S/.	3.85	1.32%	-1.79%	-2.53%	-22.22%	94.74%	3,567	0.81	0.00	10.69	455.38	Industrial	2.38%
-	CVERDEC1 PE**	US\$	26.50	0.00%	-6.98%	-1.85%	-28.82%	78.95%	27	0.90	0.00	7.84	9,276.48	Mining	5.25%
-	ENGEPEC1 PE**	S/.	2.51	0.00%	-2.33%	-2.33%	-11.62%	78.95%	1,343	0.82	17.81	6.07	1,129.44	Public Services	1.44%
-	ENDISPC1**	S/.	4.00	0.00%	-1.96%	2.56%	0.00%	36.84%	1,214	0.84	0.00	6.56	657.58	Public Services	0.98%
▲	FERREYC1 PE**	S/.	2.25	4.65%	2.27%	9.76%	9.76%	100.00%	24,348	0.89	10.60	4.54	548.01	Diverse	4.90%
-	AENZAC1 PE**	S/.	0.81	0.00%	-6.90%	-10.00%	-40.88%	73.68%	72	1.09	0.00	-	249.61	Diverse	4.05%
▲	IFS PE**	US\$	21.70	1.88%	-1.81%	-9.01%	-19.18%	100.00%	2,968	0.87	11.06	6.67	2,504.57	Diverse	7.22%
-	INRETC1 PE**	US\$	30.60	0.00%	-4.67%	1.32%	-12.45%	78.95%	455	0.88	0.00	19.59	3,327.65	Diverse	5.28%
▲	LUSURC1 PE**	S/.	15.38	0.13%	0.20%	-2.97%	8.01%	57.89%	4,804	0.00	4.97	12.61	1,928.10	Public Services	1.81%
▼	MINSURI1 PE**	S/.	3.60	-1.91%	-5.26%	-13.25%	-8.86%	94.74%	43,509	1.12	12.18	1.25	2,671.99	Mining	3.09%
-	PML PE**	US\$	0.09	0.00%	0.00%	0.00%	-25.00%	10.53%	450	#N/A N/A	0.00	-	23.79	Mining	2.12%
-	SCCO PE**	US\$	45.90	0.00%	-8.07%	-3.06%	-25.70%	89.47%	50,665	1.06	0.00	11.22	35,484.94	Industrial	2.12%
-	SIDERC1 PE**	S/.	1.55	0.00%	-4.32%	0.00%	-3.13%	68.42%	53	0.84	0.00	3.75	279.33	Mining	2.14%
-	TV PE**	US\$	0.16	0.00%	0.00%	-55.56%	-87.69%	36.84%	10,024	1.27	0.00	-	15.83	Industrial	1.43%
-	UNACEMC1 PE**	S/.	1.58	0.00%	-6.51%	-9.20%	-34.17%	89.47%	25,854	1.02	6.96	-	739.55	Mining	2.93%
▲	VOLCABC1 PE**	S/.	0.55	1.85%	-3.51%	-11.29%	-8.33%	100.00%	37,547	1.39	0.00	11.30	1,544.41	Industrial	3.00%
-	BROCALC1 PE**	S/.	4.65	0.00%	0.00%	3.33%	-10.58%	21.05%	106	0.00	0.00	33.57	194.53	Mining	5.90%
-	RIMSEGC1 PE**	S/.	0.76	0.00%	0.00%	0.00%	-11.63%	5.26%	196	0.00	0.00	11.23	323.19	Finance	3.09%
-	CORAREC1 PE**	US\$	1.91	0.00%	0.00%	-1.04%	0.53%	15.79%	29,810	0.00	8.03	3.86	1,956.91	Mining	2.12%
-	ENGIEC1 PE**	S/.	5.40	0.00%	0.00%	-2.70%	-7.85%	31.58%	514	0.54	0.00	16.93	836.03	Diversas	2.12%
-	GBVLAC1 PE**	S/.	2.51	0.00%	2.45%	0.40%	-7.72%	31.58%	1,971	0.00	0.00	-	117.51	Diversas	2.14%

Quantity of shares: 29  
Source: Bloomberg, Economática  
\* Bloomberg Industry Classification System  
\*\* PER is used in the stock market and original currency of the instrument

Up 9  
Down 1  
Hold 19

\*Legend: Variation 1D: 1 Day; 5D: 5 Days; 1M: 1 Month; YTD: Var.% 12/31/21 to date

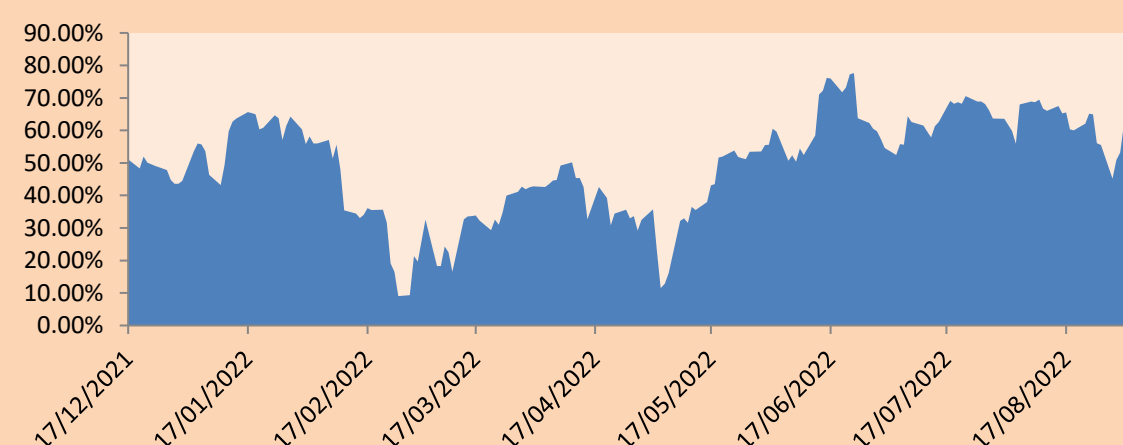
### Sectorial Indices

		Close	1D*	5D*	30D*	YTD*	Beta
▲	S&P/BVLMining	314.11	0.53%	-3.61%	-2.57%	-23.69%	1.13
▲	S&P/BVLConsumer	1,105.01	0.81%	-1.68%	1.01%	-3.74%	0.68
▲	S&P/BVLIndustrials	225.40	1.84%	-2.07%	-0.23%	-12.66%	0.75
▲	S&P/BVLFinancials	907.82	0.36%	-1.53%	-4.75%	0.19%	1.23
▲	S&P/BVLConstruction	219.09	0.45%	-4.17%	-4.70%	-22.69%	0.72
-	S&P/BVLPublicSvcs	611.54	0.00%	-1.19%	-0.31%	11.49%	0.16
-	S&P/BVLElectricUtil	597.01	0.00%	-1.19%	-0.31%	11.49%	0.16

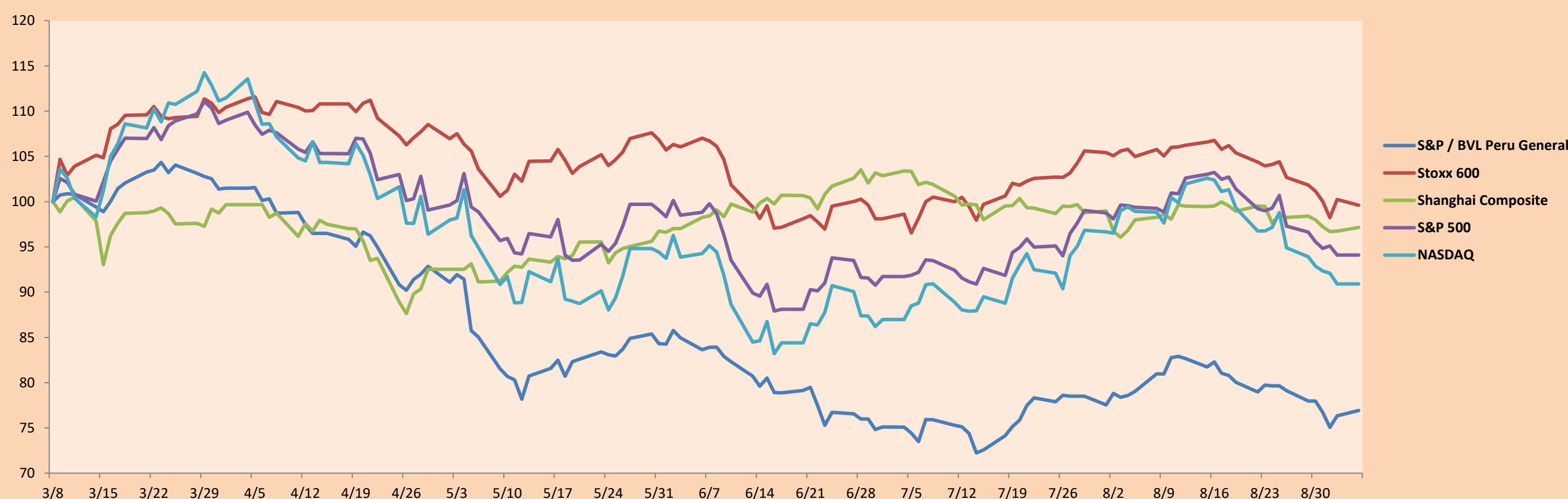
S&P/BVLConstructionTRPEN

\*Legend: Variation 1D: 1 Day; 5D: 5 Days; 1M: 1 Month; YTD: Var.% 12/31/21 to date

Correlation Graph of Returns of Mining Index against Metallic Index of London (3 months)



Indices (6 months)



Base: 08/03/22=100  
Source: Bloomberg

Capital Market Laboratory Coordinator: MS Javier Penny Pestana  
Collaboration: Mariafe Urrutia, Fedele Calle, Miguel Solimano y Maciell Esquerre.  
email: pulsobursatil@ulima.edu.pe  
facebook: www.facebook.com/pulsobursatil.ul

## SOVEREIGN RATING

### RISK RATINGS

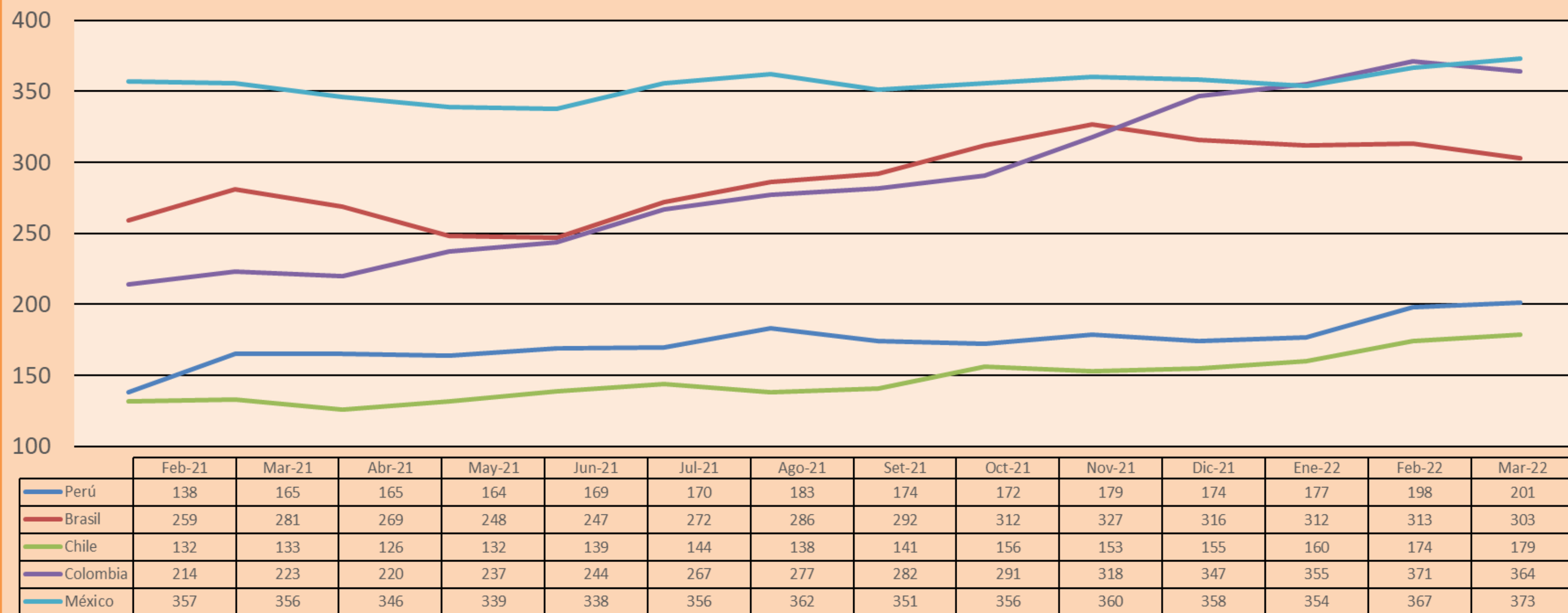
Moody's	S&P	Fitch	
Aaa	AAA	AAA	Prime
Aa1	AA+	AA+	High credit quality
Aa2	AA	AA	
Aa3	AA-	AA-	
A1	A+	A+	Medium-high grade, with low credit risk
A2	A	A	
A3	A-	A-	
Baa1	BBB+	BBB+	Moderate Credit Risk
Baa2	BBB	BBB	
Baa3	BBB-	BBB-	
Ba1	BB+	BB+	It has speculative elements and it is subject to substantial credit risk
Ba2	BB	BB	
Ba3	BB-	BB-	
B1	B+	B+	It is considered speculative and it has high credit risk
B2	B	B	
B3	B-	B-	
Caa1	CCC+	CCC	
Caa2	CCC		
Caa3	CCC-		
Ca	CC		
	C	DDD	
C	D	DD	Very close to default or in default
		D	

Source: Bloomberg

Latin America Credit Rating			
Clasificadora de riesgo			
Country	Moody's	Fitch	S&P
Peru	Baa1	BBB	BBB
México	Ba2	BB-	BB-
Venezuela	C	WD	NR
Brazil	Ba2	BB-	BB-
Colombia	Baa2	BB+	BB+
Chile	A1	A-	A
Argentine	Ca	WD	CCC+
Panama	Baa2	BBB-	BBB

Source: Bloomberg

## LATAM Country Risk(bps)



Source: BCRP

Capital Market Laboratory Coordinator: MS Javier Penny Pestana  
Collaboration: Mariafe Urrutia, Fedele Calle, Miguel Solimano y Maciell Esquerre  
email: pulsobursatil@ulima.edu.pe  
facebook: www.facebook.com/pulsobursatil.ul