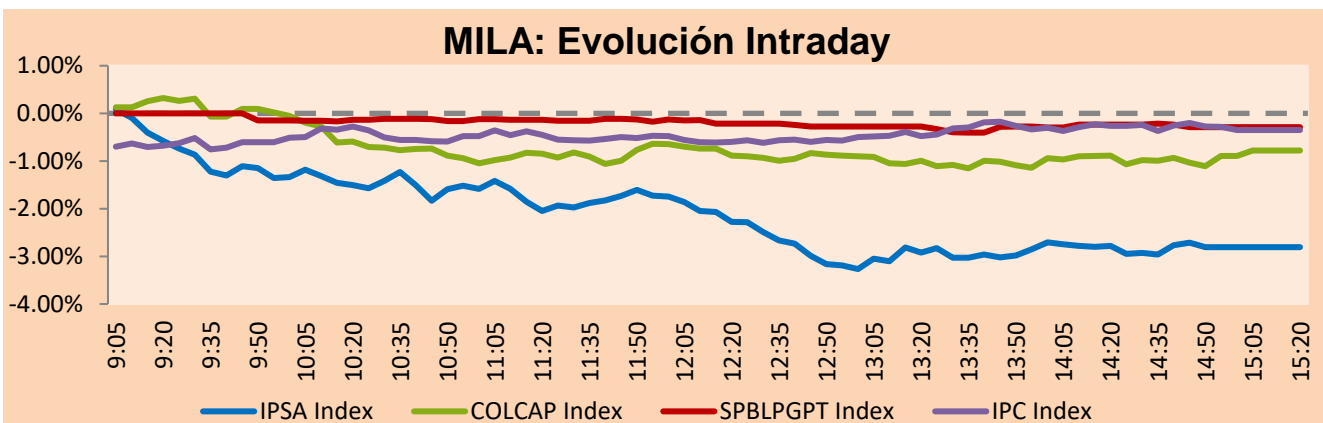


MILA

Lima, Sep 6, 2022

Main Indexes	Close	1 D	5 D	1 M	YTD	Cap. Burs. (US\$ bill)
▼ IPSA (Chile)	5,608.08	-2.96%	1.29%	7.59%	30.17%	111.45
▼ IGPA (Chile)	29,894.88	-2.26%	1.90%	8.34%	38.62%	129.09
▼ COLSC (Colombia)	859.52	-0.07%	-0.29%	-2.99%	-11.67%	3.41
▼ COLCAP (Colombia)	1,227.08	-0.78%	-3.40%	-5.62%	-13.03%	58.29
▼ S&P/BVL (Perú)*	18,848.22	-0.29%	-1.65%	-2.95%	-10.72%	77.57
▼ S&P/BVL SEL (Perú)	491.63	-0.28%	-1.88%	-3.00%	-12.76%	68.67
▼ S&P/BVL LIMA 25	27,093.83	-0.10%	-2.12%	-3.16%	-10.50%	76.83
▼ IPC (México)	45,902.89	-0.27%	-0.04%	-1.76%	-13.83%	290.22
▼ S&P MILA 40	450.38	-2.40%	-1.63%	2.45%	1.24%	5,844.74

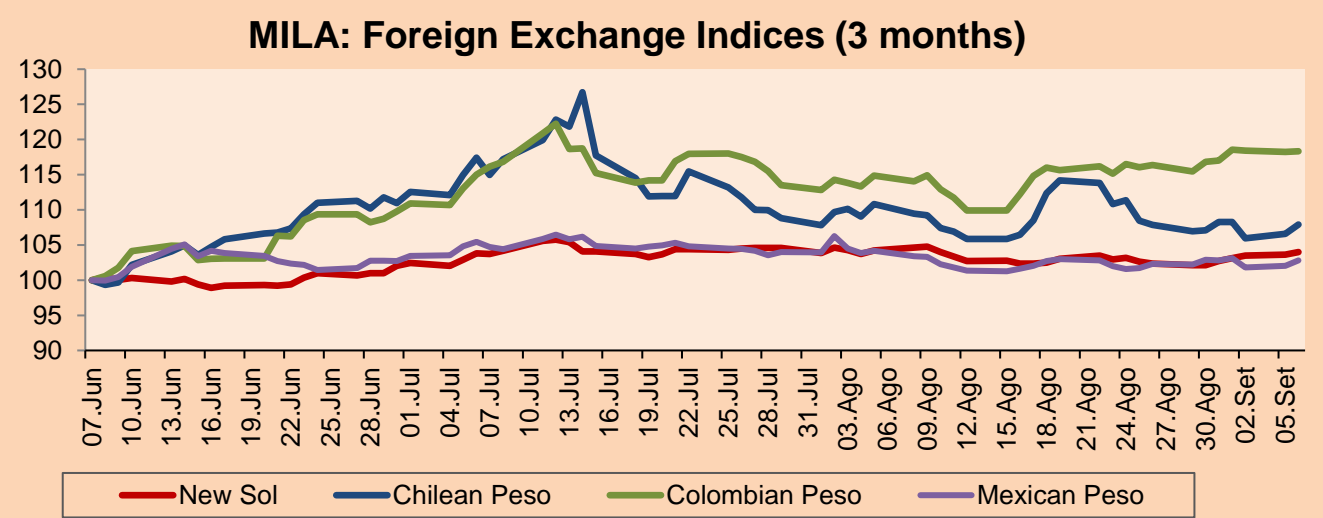
*Legend: Variation 1D: 1 day; 5D: 5 days; 1M: 1 Month; YTD: Var% 12/31/21 to date



Source: Bloomberg

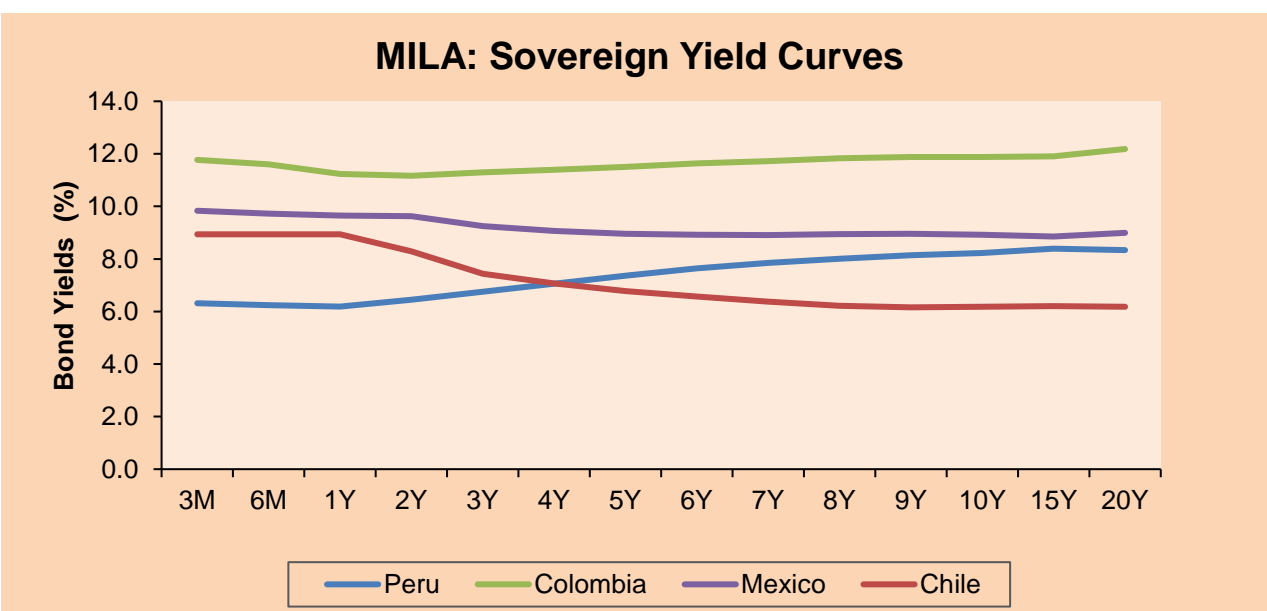
Currency	Price	1D*	5D*	30 D*	YTD*
▲ Sol (PEN)	3.8993	0.39%	1.91%	-0.22%	-2.50%
▲ Chilean Peso (CLP)	892.90	1.27%	0.76%	-2.62%	4.80%
▲ Colombian Peso (COP)	4,478.55	0.09%	1.29%	3.00%	9.76%
▲ Mexican Peso (MXN)	20.14	0.78%	-0.07%	-1.30%	-1.90%

*Legend: Variation 1D: 1 day; 5D: 5 days; 1M: 1 Month; YTD: Var% 12/31/21 to date



Base: 07/06/22=100
Source: Bloomberg

Fixed Income	Currency	Price	Bid Yield (%)	Ask Yield (%)	Duration
PERU 7.35 07/21/25	USD	107.512	4.61	4.44	2.57
PERU 4.125 08/25/27	USD	97.405	4.78	4.66	4.42
PERU 8.75 11/21/33	USD	128.096	5.39	5.37	7.49
PERU 6.55 03/14/37	USD	107.581	5.80	5.74	8.88
PERU 5.625 11/18/2050	USD	101.503	5.54	5.50	13.96
CHILE 2.25 10/30/22	USD	100.034	2.93	1.07	0.14
CHILE 3.125 01/21/26	USD	95.984	4.50	4.34	3.14
CHILE 3.625 10/30/42	USD	76.074	5.67	5.58	13.12
COLOM 11.85 03/09/28	USD	121.167	7.20	7.06	3.98
COLOM 10.375 01/28/33	USD	118.352	7.84	7.69	6.60
COLOM 7.375 09/18/37	USD	93.604	8.17	8.07	8.51
COLOM 6.125 01/18/41	USD	78.789	8.45	8.37	9.92
MEX 4 10/02/23	USD	78.789	8.453	8.371	9.92
MEX5.55 01/45	USD	90.601	6.37	6.31	12.27



Source: Bloomberg

Equity

Largest gains	Exchange	Currency	Price	▲%	Largest losses	Exchange	Currency	Price	▼%
MEGACABLE-CPO	Mexico	MXN	45.06	5.38	COLBUN SA	Chile	CLP	92	-7.90
COCA-COLA FEMSA	Mexico	MXN	126.35	4.65	ANDINA-PREF B	Chile	CLP	1781.1	-6.09
GRUPO AVAL SA-PF	Colombia	COP	650.00	3.17	AGUAS ANDINAS-A	Chile	CLP	200	-5.97
INDUSTRIAS PENOL	Mexico	MXN	165.08	2.62	CERVEZAS	Chile	CLP	5000	-5.13
GRUPO MEXICO-B	Mexico	MXN	77.49	1.79	ITAU CORPBANCA	Chile	CLP	2.021	-5.12

Per Turnover	Exchange	Amount (US\$)	Per Volume	Exchange	Volume
AMERICA MOVIL-L	Mexico	46,321,299	ITAU CORPBANCA	Chile	965,740,860
SOQUIMICH-B	Chile	44,598,712	ENEL CHILE SA	Chile	338,378,169
WALMART DE MEXIC	Mexico	44,045,429	BANCO SANTANDER	Chile	256,103,466
GRUPO F BANORT-O	Mexico	21,576,825	BANCO DE CHILE	Chile	114,677,401
ENEL CHILE SA	Chile	13,141,080	ENEL AMERICAS SA	Chile	74,336,802

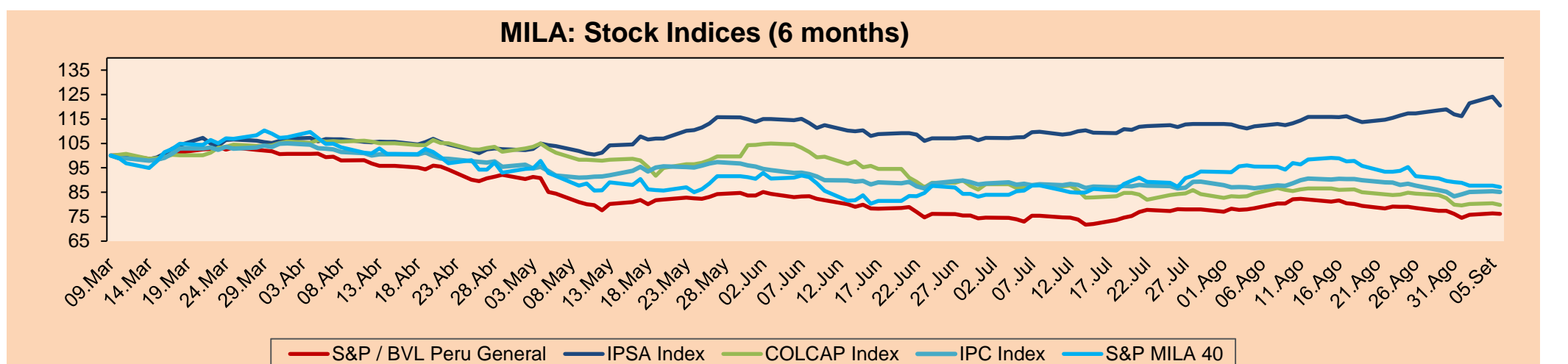
MILA

Peru: The BVL General index ended today's session with a negative result of -0.29%. The index maintains a negative annual cumulative trend of -10.72% in local currency, while the dollar-adjusted performance declined to -8.47%. Next, the S&P/BVL Peru SEL varied by -0.28% while the S&P/BVL LIMA 25 by -0.10%. The PEN spot reached S/3.8995. Headline: AFP affiliates have one week to withdraw up to S/18,400.

Chile: The IPSA index ended the day with a negative return of -2.97%. The most damaged sectors of the session were Industrials (-5.12%) and Energy (-4.48%). The worst performing stocks were Colbún SA (-7.90%) and Grupo Security SA (-6.50%). Headline: Goldman Sachs alludes to Boric's political "defeat" and 2 more years of uncertainties in post-Plebiscite.

Colombia: The COLCAP index ended the session with a negative return of -0.78%. The worst performing sectors of the day were Financials (-1.22%) and Utilities (-0.54%). The worst performing stocks were Banco de Bogotá (-3.75%) and Bolsa de Valores de Colombia (-3.70%). Headline: Treasury securities reach historical purchase figures in August.

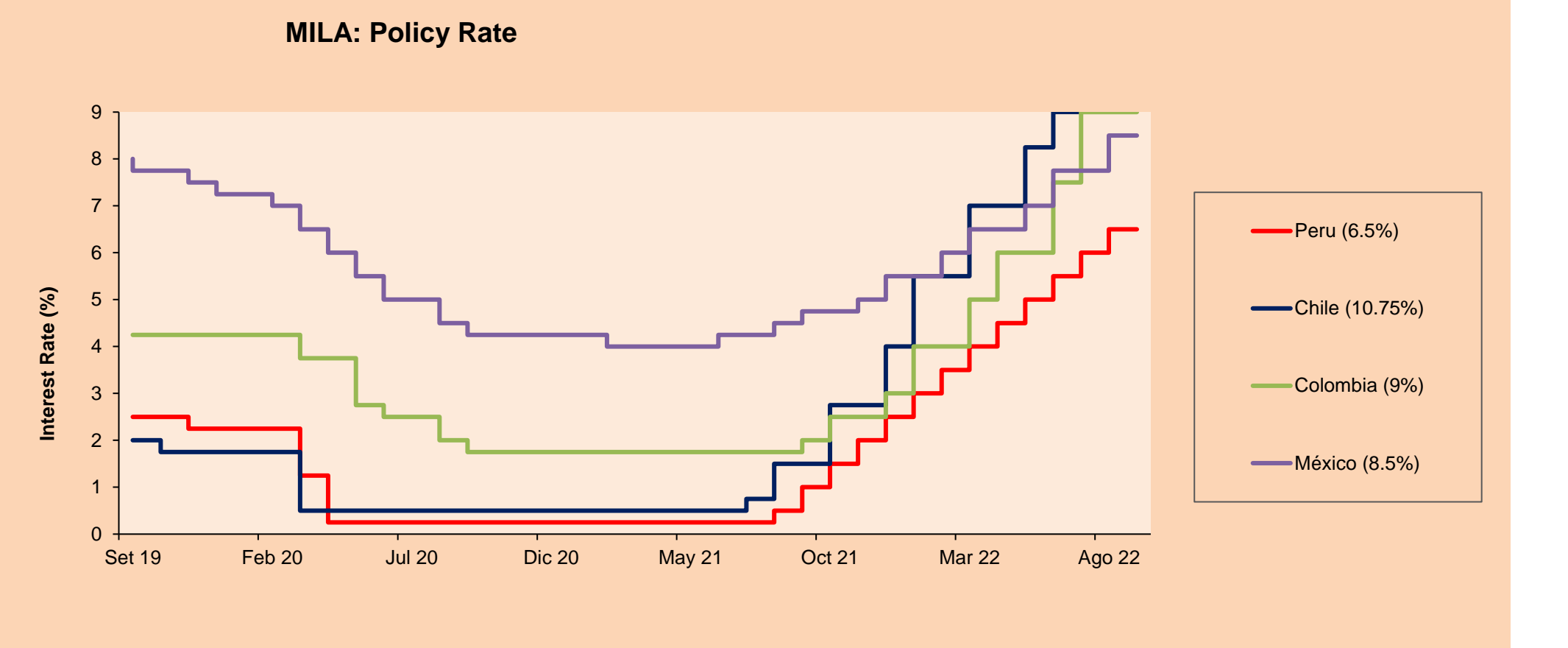
Mexico: The IPC index closed the day with a negative return of -0.27%. The sectors that lost the most during the day were Healthcare (-2.47%) and Financials (-1.87%). The worst performing stocks were Operadora de Sites Mexicanos SA de CV (-4.57%) and Bolsa Mexicana de Valores SAB de CV (-3.53%). Headline: Mexico's gross fixed investment grows 6.8% annually, its best record since January.



Base: 10/03/22=100
Source: Bloomberg

ETFs

ETFs	Curr.	Close	1D	5D	30 D	YTD	Exchange
▲ iShares MSCI All Peru Caped Index Fund	USD	25.05	0.44%	-2.94%	-2.45%	-15.43%	NYSE Arca
▼ iShares MSCI All Chile Caped Index Fund	USD	28.65	-3.24%	0.92%	11.44%	24.08%	Cboe BZX
- Global X MSCI Colombia	USD	9.02	0.00%	0.00%	2.85%	-9.74%	I/A Field Not Applica
▼ iShares MSCI Mexico Capped	USD	45	-1.27%	-0.38%	-0.75%	-11.07%	NYSE Arca
▼ iShares MSCI Emerging Markets	USD	38.3	-1.19%	-2.52%	-4.39%	-21.60%	NYSE Arca
▼ Vanguard FTSE Emerging Markets	USD	40.26	-0.86%	-1.97%	-2.71%	-18.60%	NYSE Arca
▼ iShares Core MSCI Emerging Markets	USD	47.18	-1.21%	-2.36%	-3.95%	-21.18%	NYSE Arca
▼ iShares JP Morgan Emerging Markets Bonds	USD	53.65	-0.81%	-1.94%	-4.38%	-14.60%	Cboe BZX
▼ Morgan Stanley Emerging Markets Domestic	USD	4.39	-0.45%	-1.79%	-1.35%	-19.89%	New York



Source: Bloomberg

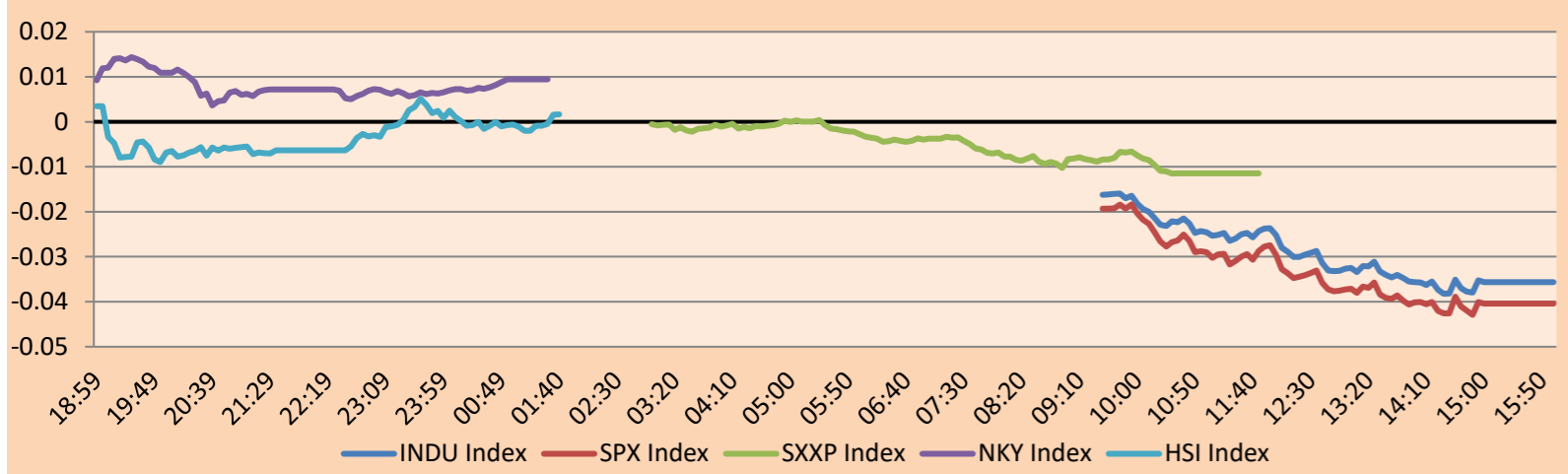
Capital Market Laboratory Coordinator: MS Javier Penny Pestana
Collaboration: Mariafe Urrutia, Fedele Calle, Miguel Solimano y Maciell Esquerre
email: pulsobursatil@ulima.edu.pe
facebook: www.facebook.com/pulsobursatil.ul

WORLD

Main Indices	Close	1 D*	5 D*	1 M*	YTD*	Market Cap. (US\$ Mill.)
▼ Dow Jones (USA)	31,145.30	-0.55%	-2.97%	-5.05%	-14.29%	9,880,168
▼ Standard & Poor's 500 (EEUU)	3,908.19	-0.41%	-3.04%	-5.72%	-18.00%	34,406,547
▼ NASDAQ Composite (USA)	11,544.91	-0.74%	-3.93%	-8.79%	-26.21%	19,758,388
▲ Stoxx EUROPE 600 (Europe)	414.38	0.24%	-1.29%	-4.90%	-15.05%	11,572,156
▲ DAX (Germany)	12,871.44	0.87%	-0.69%	-5.18%	-18.97%	1,360,304
▲ FTSE 100 (United Kingdom)	7,300.44	0.18%	-0.83%	-1.87%	-1.14%	1,739,154
▲ CAC 40 (France)	6,104.61	0.19%	-1.70%	-5.68%	-14.66%	2,014,458
▼ IBEX 35 (Spain)	7,842.20	-0.26%	-1.72%	-3.99%	-10.00%	528,998
▼ MSCI AC Asia Pacific Index	152.59	-0.65%	-3.51%	-4.45%	-20.47%	20,935,663
▼ HANG SENG (Hong kong)	19,202.73	-0.12%	-3.74%	-4.95%	-17.93%	3,050,244
▲ SHANGHAI SE Comp. (China)	3,243.45	1.36%	0.50%	0.51%	-10.89%	6,514,948
▲ NIKKEI 225 (Japan)	27,626.51	0.02%	-2.02%	-1.95%	-4.05%	3,259,146
▼ S&P / ASX 200 (Australia)	6,826.54	-0.38%	-2.46%	-2.69%	-8.30%	1,532,267
▲ KOSPI (South Korea)	2,410.02	0.26%	-1.67%	-3.24%	-19.06%	1,337,127

*Legend: Variation 1D: 1 Day; 5D: 5 Days; 1M: 1 Month; YTD: Var.% 12/31/21 to date

Mercado Evolución Intraday (var %)

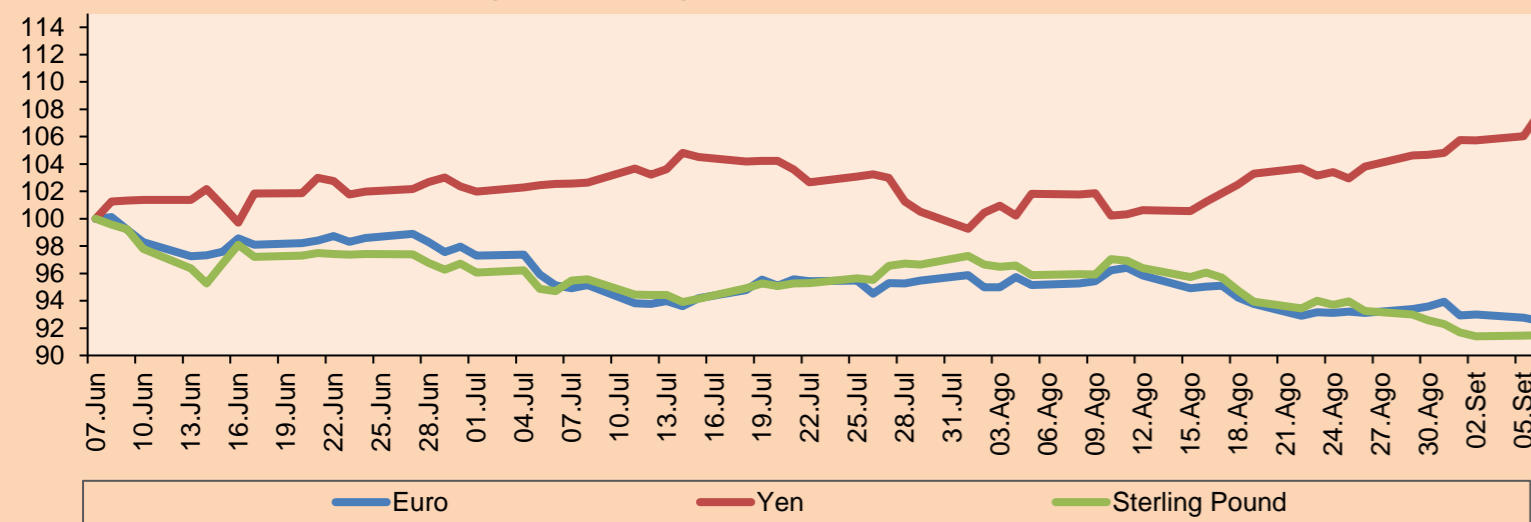


Source: Bloomberg

Currency	Price	1 D*	5 D*	1 M*	YTD*
▼ Euro	0.9904	-0.25%	-1.11%	-2.74%	-12.89%
▲ Yen	142.8000	1.56%	2.89%	5.77%	24.09%
▲ Sterling Pound	1.1520	0.03%	-1.17%	-4.58%	-14.87%
▲ Yuan	6.9545	0.30%	0.62%	2.85%	9.41%
▲ Hong Kong Dollar	7.8497	0.01%	0.01%	0.00%	0.68%
▲ Brazilian Real	5.2512	1.90%	2.52%	1.69%	-5.82%
▲ Argentine Peso	140.5865	0.27%	1.43%	5.77%	36.84%

*Legend: Variation 1D: 1 Day; 5D: 5 Days; 1M: 1 Month; YTD: Var.% 12/31/21 to date

Foreign Exchange Indices (3 months)

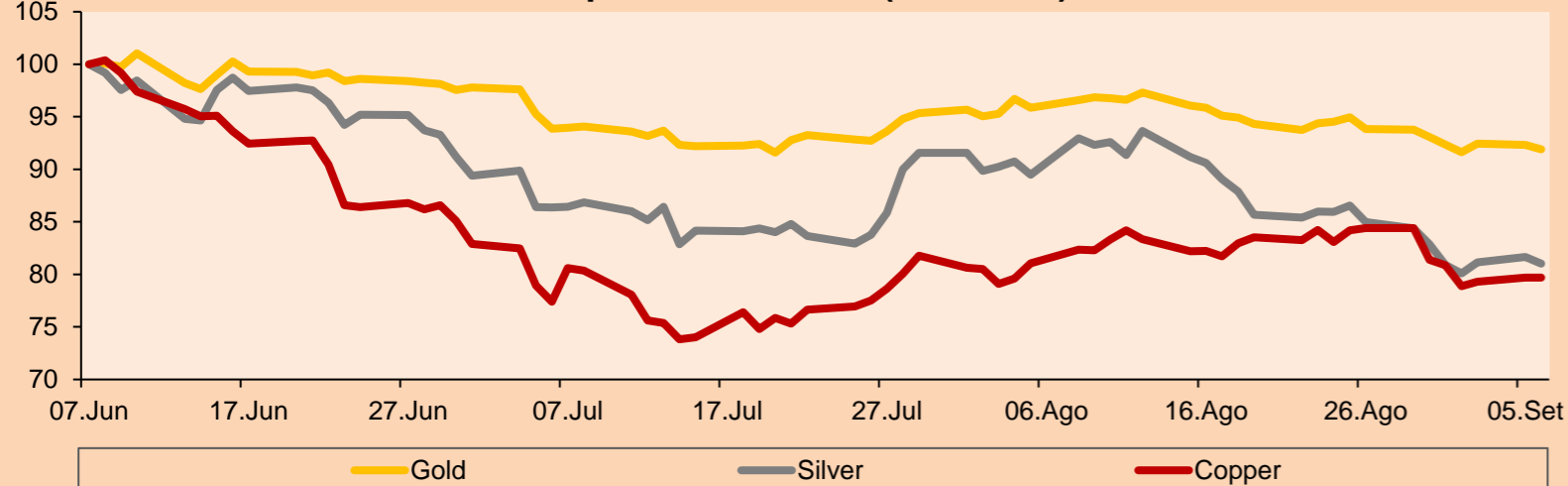


Base: 07/06/22=100
Source: Bloomberg

Commodities	Close	1 D*	5 D*	1 M*	YTD*
▼ Oro (US\$ Oz. T) (LME)	1,702.14	-0.48%	-1.27%	-4.13%	-6.95%
▼ Plata (US\$ Oz. T) (LME)	18.02	-0.76%	-2.21%	-9.43%	-22.69%
- Cobre (US\$ TM) (LME)	7,731.00	0.00%	-2.05%	-1.67%	-20.63%
- Zinc (US\$ TM) (LME)	3,241.50	0.00%	-9.06%	-9.82%	-9.71%
▲ Petróleo WTI (US\$ Barril) (NYM)	86.88	0.01%	-5.19%	-1.36%	22.42%
- Estaño (US\$ TM) (LME)	21,752.62	0.00%	-8.66%	-11.63%	-44.75%
- Plomo (US\$ TM) (LME)	1,873.25	0.00%	-5.56%	-10.57%	-19.87%
▼ Azúcar #11 (US\$ Libra) (NYB-ICE)	17.98	-0.94%	-0.66%	0.22%	-2.07%
▼ Cacao (US\$ TM) (NYB-ICE)	2,369.00	-1.95%	-1.62%	1.20%	-7.46%
▲ Café Arábica (US\$ TM) (NYB-ICE)	230.25	0.63%	-2.10%	11.56%	3.18%

*Leyenda: Variación 1D: 1 Día; 5D: 5 Días; 1M: 1 Mes; YTD: Var.% 31/12/21 a la fecha

Principal Metals Index (3 months)



Base: 07/06/22=100
Source: Bloomberg

Equity

Germany (Stocks from DAX Index)

Largest gains	Curr.	Price	▲%	Exchange	Largest losses	Curr.	Price	▼%	Exchange
MBG GY	EUR	55.24	2.98	Xetra	BAYN GY	EUR	51.51	-0.58	Xetra
CON GY	EUR	56.26	2.55	Xetra	ADS GY	EUR	144.36	-0.58	Xetra
DBK GY	EUR	8.358	2.16	Xetra	DTE GY	EUR	18.828	-0.39	Xetra
HEI GY	EUR	45.76	2.12	Xetra	PAH3 GY	EUR	69.3	-0.20	Xetra

Europe (Stocks from STOXX EUROPE 600)

Largest gains	Curr.	Price	▲%	Exchange	Largest losses	Curr.	Price	▼%	Exchange
VTY LN	GBp	810	7.28	Londres	UN01 GY	EUR	4.734	-5.70	Xetra
GRG LN	GBp	1973	7.11	Londres	LPP PW	PLN	7860	-5.64	Warsaw
DIE BB	EUR	153.3	6.24	EN Brussels	AKRBP NO	NOK	349	-5.57	Oslo
WOSG LN	GBp	807.5	5.62	Londres	HER IM	EUR	2.343	-5.14	Borsa Italiana

Global Overview:

United States:

The US market closed with negative yields. The DOW JONES index closed with negative figures, due to Fed speakers indicating that the Central Bank will maintain its tight policy. The most affected stocks were 3M, down -4.15% and Intel Corp with -2.75%. The S&P500 index also ended with a negative performance. After it showed signs of a resistance to the Fed's tight monetary policy over August for the second consecutive month. Shares of Amazon.com and Microsoft Corp, lost about 1% as rising bond yields spooked investors. The hardest hit sectors were Communication Services (-1.26) and Energy (-1.08). Finally, the NASDAQ index ended the day with a negative index as the technology sector was pressured lower as large companies faltered after better-than-expected services data kept the outlook for a hawkish Fed later this month. Thus, DOW JONES -0.55%, S&P 500 -0.41% and NASDAQ -0.74% ended the day with negative results.

Europe:

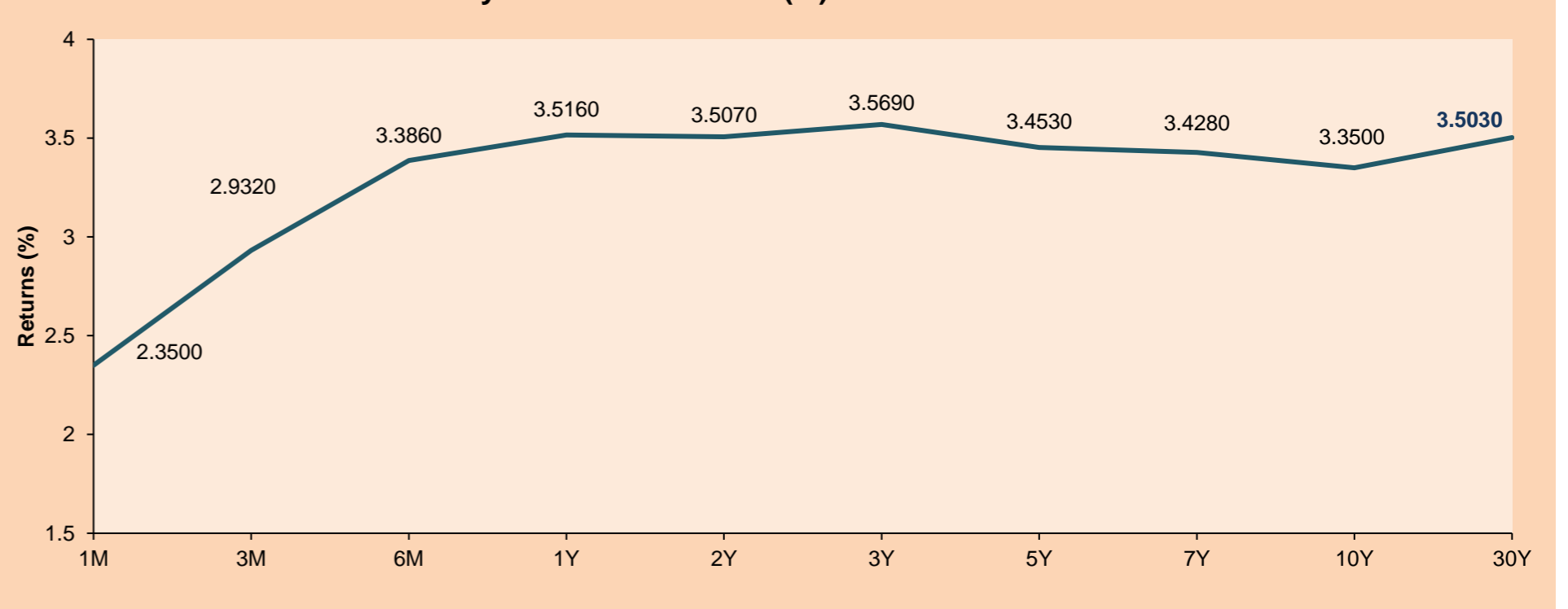
Major European indices ended the session with positive returns after slumping earlier in the week. European stocks surprised with a rebound amid concerns about an impending energy crisis and a sharp downturn in risk appetite. The pan-European STOXX 600 index finished higher, led by shares of Credit Suisse Group. Which gained 1.9% after the lender agreed to sell its global trust business. The UK market, reflected in the FTSE 100, ended with gains for a third session helped by basic materials, consumer discretionary and financials stocks. In the political environment, the new Prime Minister, Liz Truss, after taking office will unveil an energy rescue plan on Thursday focused on measures against the rising cost of energy. Meanwhile, the DAX index closed in positive territory with non-core consumer stocks +1.79% and materials +1.64% among the best performers. with consumer discretionary and materials stocks among the best performers. While investors focused on the environment of the Nord Stream gas outage, which raised concerns about rising energy prices. The French market ended lower, following the trend of its European peers. Amid uncertainty on the part of investors, who are bracing for a rise in interest rates by a wider margin. Individual stocks, Worldline (+3.1%), Alstom (+2.3%), Publicis Groupe (+2.1%) and Renault (+2.1%) gained the most. Thus, FTSE 100 +0.18%; CAC 40 +0.19%; DAX -0.87%; STOXX 600 +0.24% ended at positive levels.

Asia:

Major Asian indices closed with mostly positive returns. The Chinese market closed in positive territory, due to positive investor reaction as the Chinese government showed concern in taking measures to bolster the ailing economy, stating that this quarter is a critical time to adopt policy measures as signs point to a further loss of economic momentum. The central bank also said it will cut the foreign exchange reserve ratio to support the Chinese yuan. The Hang Seng index ended lower, despite technology companies rising 0.1%, with gaming and social networking giant Tencent down 1.5%. Stocks that supported the index the most rose 4.4%, led by Country Garden Holdings rising 9.3% due to a decrease in sales losses. The South Korean market rebounded after falling for the past three sessions, but gains were capped by a stronger dollar and concerns about Europe's energy struggles. The won ended unchanged, while the benchmark bond yield rose. On the corporate side, Noroo Holding CO was up +13.38%, Kum Yang CO was up +12.93% and Jayjun Cosmetic CO was up +11.43%. The Japanese market closed higher after four sessions of losses, the best performing sectors were Information Technology (+0.46%) and Healthcare (+0.32%). The stocks leading this slight growth were Unitika up +7.47%, specialized in the manufacturing sector and Toho Zinc CO increasing by +4.19%. The Australian market closed lower, due to an increase in the interest rate by 50 bp in order to contain inflation. Thus, NIKKEI +0.03%; HANG SENG -0.12%; CSI 300 +0.92%; S&P/ASX 200 -0.37%; KOSPI +0.26%; SHANGAI COMPOSITE +1.36% ended with mostly positive performances.

ETFs	Curr.	Close	1D	5D	30 D	YTD	Exchange
SPDR S&P 500 ETF TRUST	USD	390.76	-0.38%	-1.87%	-5.49%	-17.73%	NYSE Arca
ISHARES MSCI EMERGING MARKET	USD	38.30	-1.19%	-2.52%	-4.39%	-21.60%	NYSE Arca
ISHARES IBOXX HIGH YLD CORP	USD	74.11	-0.27%	-1.11%	-5.04%	-14.83%	NYSE Arca
FINANCIAL SELECT SECTOR SPDR	USD	32.81	-0.24%	-1.47%	-2.61%	-15.98%	NYSE Arca
VANECK GOLD MINERS ETF	USD	23.44	-1.47%	-2.66%	-10.81%	-26.82%	NYSE Arca
ISHARES RUSSELL 2000 ETF	USD	178.31	-0.99%	-3.42%	-6.55%	-19.84%	NYSE Arca
SPDR GOLD SHARES	USD	158.33	-0.58%	-1.36%	-4.21%	-7.39%	NYSE Arca
ISHARES 20+ YEAR TREASURY BO	USD	107.49	-2.48%	-4.84%	-7.71%	-27.46%	NASDAQ GM
INVESTCO QQQ TRUST SERIES 1	USD	293.05	-0.72%	-2.65%	-8.92%	-26.34%	NASDAQ GM
ISHARES BIOTECHNOLOGY ETF	USD	119.54	-1.36%	-1.32%	-9.05%	-21.67%	NASDAQ GM
ENERGY SELECT SECTOR SPDR	USD	79.22	-0.93%	-2.49%	8.40%	42.74%	NYSE Arca
PROSHARES ULTRA VIX ST FUTUR	USD	10.60	3.11%	0.28%	7.29%	-14.72%	Cboe BZX
UNITED STATES OIL FUND LP	USD	71.42	-0.01%	-5.37%	-0.17%	31.38%	NYSE Arca
ISHARES MSCI BRAZIL ETF	USD	30.25	-2.01%	-3.11%	1.68%	7.77%	NYSE Arca
SPDR S&P OIL & GAS EXP & PR	USD	140.30	-1.47%	-2.09%	8.71%	46.34%	NYSE Arca
UTILITIES SELECT SECTOR SPDR	USD	74.79	0.25%	-0.05%	0.75%	4.48%	NYSE Arca
ISHARES US REAL ESTATE ETF	USD	94.28	1.15%	-0.38%	-4.33%	-18.82%	NYSE Arca
SPDR S&P BIOTECH ETF	USD	81.34	-2.85%	-2.12%	-11.87%	-27.35%	NYSE Arca
ISHARES IBOXX INVESTMENT GRA	USD	106.92	-1.36%	-3.18%	-5.40%	-19.32%	NYSE Arca
ISHARES JP MORGAN USD EMERGI	USD	84.30	-0.92%	-1.97%	-4.71%	-22.70%	NASDAQ GM
REAL ESTATE SELECT SECT SPDR	USD	41.71	1.04%	-0.69%	-4.60%	-19.49%	NYSE Arca
ISHARES CHINA LARGE-CAP ETF	USD	28.68	-1.98%	-3.11%	-4.84%	-21.60%	NYSE Arca
CONSUMER STAPLES SPDR	USD	72.15	-0.57%	-1.92%	-3.34%	-6.43%	NYSE Arca
VANECK JUNIOR GOLD MINERS	USD	28.62	-2.29%	-3.25%	-15.17%	-31.74%	NYSE Arca
SPDR BLOOMBERG HIGH YIELD BO	USD	91.38	-0.23%	-1.18%	-5.14%	-15.83%	NYSE Arca
VANGUARD REAL ESTATE ETF	USD	92.71	0.90%	-0.79%	-4.75%	-20.08%	NYSE Arca
GRAYSCALE BITCOIN TRUST BTC	USD	11.72	-5.33%	-5.02%	-17.64%	-65.78%	OTC US

USA Treasury Bonds Yield Curve (%)



Source: Bloomberg

LIMA

Stocks

Ticker	Currency	Price	1D*	5D*	30D*	YTD*	Frequency	Volume (US\$)	Beta	Dividend Yield (%)	Price Earning	Market Cap. (M US\$)	Economic Sector*	Index Weight
▼ ALICORC1 PE**	S/.	5.65	-0.07%	-0.29%	-2.99%	-11.67%	100.00%	24,009	0.88	4.42	9.55	1,235.14	Industrial	3.53%
- ATACOCB1 PE**	S/.	0.08	0.00%	0.00%	-11.11%	-33.33%	15.79%	20	#N/A N/A	0.00	-	22.38	Mining	1.02%
▼ BACKUS1 PE**	S/.	21.84	-0.05%	-0.05%	0.18%	6.54%	68.42%	9,690	0.79	15.71	6.79	7,538.03	Industrial	0.82%
▲ BAP PE**	US\$	126.61	0.32%	-2.79%	-3.41%	2.29%	100.00%	199,011	1.25	3.16	-	10,068.03	Diverse	5.82%
▼ BVN PE**	US\$	5.71	-1.21%	5.94%	2.15%	-21.78%	100.00%	40,223	1.41	1.23	-	1,573.87	Mining	5.88%
▲ CASAGRC1 PE**	S/.	8.79	6.55%	2.21%	5.90%	-3.41%	94.74%	3,541	1.31	61.45	5.83	189.89	Agricultural	1.31%
- BBVAC1 PE**	S/.	1.48	0.00%	-1.33%	-5.13%	-10.84%	89.47%	12,153	0.73	7.14	5.51	2,801.95	Finance	2.85%
▼ CORARE1 PE**	S/.	1.38	-1.43%	-7.38%	-2.13%	-19.77%	89.47%	11,632	0.92	13.51	2.79	500.93	Industrial	1.72%
▲ CPACASC1 PE**	S/.	3.89	1.04%	-0.77%	-1.52%	-21.41%	94.74%	100,835	0.81	0.00	10.81	457.98	Industrial	2.38%
- CVERDEC1 PE**	US\$	26.50	0.00%	-6.98%	-1.85%	-28.82%	84.21%	50,854	0.90	7.01	7.84	9,276.48	Mining	5.25%
- ENGEPEC1 PE**	S/.	2.51	0.00%	-2.33%	-2.33%	-11.62%	78.95%	1,009	0.82	0.00	6.07	1,125.10	Public Services	1.44%
▼ ENDISPC1**	S/.	3.92	-2.00%	-3.92%	0.51%	-2.00%	42.11%	10,064	0.84	5.28	6.43	641.95	Public Services	0.98%
▼ FERREYC1 PE**	S/.	2.20	-2.22%	0.00%	7.32%	7.32%	100.00%	153,877	0.90	10.84	4.44	533.77	Diverse	4.90%
- AENZAC1 PE**	S/.	0.81	0.00%	-6.90%	-10.00%	-40.88%	78.95%	4,251	1.09	0.00	-	248.65	Diverse	4.05%
▼ IFS PE**	US\$	21.50	-0.92%	-2.71%	-9.85%	-19.93%	100.00%	47,444	0.88	11.16	6.60	2,481.49	Diverse	7.22%
- INRETC1 PE**	US\$	30.60	0.00%	-4.67%	1.32%	-12.45%	84.21%	1,159	0.88	0.00	19.56	3,327.65	Diverse	5.28%
- LUSURC1 PE**	S/.	15.38	0.00%	0.20%	-2.97%	8.01%	52.63%	1,042	0.00	0.00	12.61	1,920.68	Public Services	1.81%
- MINSURI1 PE**	S/.	3.60	0.00%	-5.26%	-13.25%	-8.86%	94.74%	43,342	1.12	0.00	1.26	2,661.71	Mining	3.09%
- PML PE**	US\$	0.09	0.00%	0.00%	0.00%	-25.00%	10.53%	2,662	#N/A N/A	0.00	-	22.47	Mining	2.12%
▼ SCCO PE**	US\$	45.50	-0.87%	-8.87%	-3.91%	-26.35%	94.74%	85,359	1.06	8.79	11.12	35,175.71	Industrial	2.12%
- SIDERC1 PE**	S/.	1.55	0.00%	-4.32%	0.00%	-3.13%	78.95%	4,235	0.84	26.79	3.75	278.26	Mining	2.14%
- TV PE**	US\$	0.16	0.00%	0.00%	-55.56%	-87.68%	47.37%	10,024	1.27	0.00	-	15.83	Industrial	1.43%
- UNACEMC1 PE**	S/.	1.58	0.00%	-6.51%	-9.20%	-34.17%	89.47%	25,962	1.02	6.96	-	736.71	Mining	2.93%
- VOLCABC1 PE**	S/.	0.55	0.00%	-3.51%	-11.29%	-8.33%	100.00%	15,567	1.39	0.00	11.32	1,538.47	Industrial	3.00%
- BROCALC1 PE**	S/.	4.65	0.00%	0.00%	3.33%	-10.58%	21.05%	106	0.00	0.00	33.62	193.78	Mining	5.90%
▼ RIMSEGC1 PE**	S/.	0.71	-6.58%	-6.58%	0.00%	-17.44%	5.26%	7,001	0.00	0.00	10.49	300.77	Finance	3.09%
- CORAREC1 PE**	US\$	1.91	0.00%	0.00%	-1.04%	0.53%	10.53%	29,810	0.00	0.00	3.86	1,953.26	Mining	2.12%
- ENGIEC1 PE**	S/.	5.40	0.00%	0.00%	-2.70%	-7.85%	31.58%	7,783	0.54	4.65	16.96	832.82	Diversas	2.12%
- GBVLAC1 PE**	S/.	2.51	0.00%	2.45%	0.40%	-7.72%	31.58%	1,963	0.00	0.00	-	117.06	Diversas	2.14%

Quantity of shares: 29
Source: Bloomberg, Economática
* Bloomberg Industry Classification System
** PER is used in the stock market and original currency of the instrument

Up 3
Down 9
Hold 17

*Legend: Variation 1D: 1 Day; 5D: 5 Days; 1M: 1 Month; YTD: Var.% 12/31/21 to date

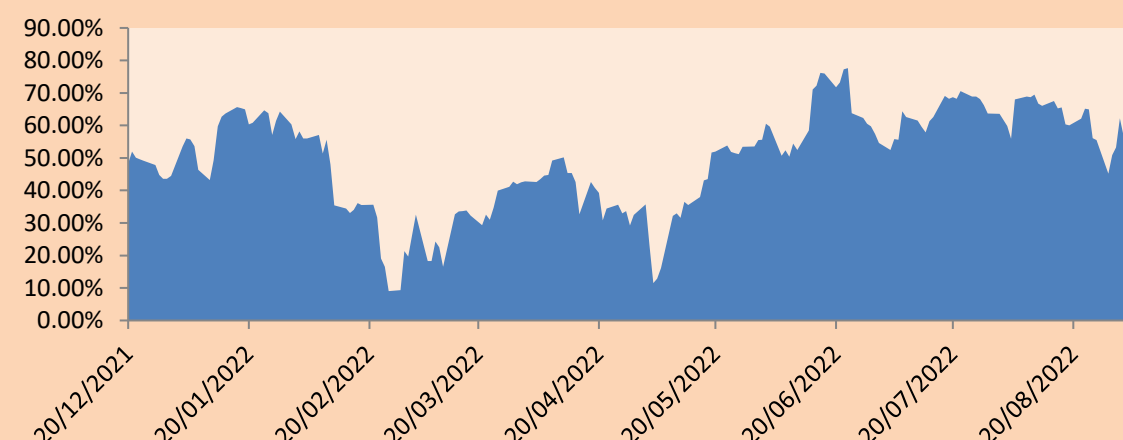
Sectorial Indices

	Close	1D*	5D*	30D*	YTD*	Beta
▼ S&P/BVLMining	311.35	-0.88%	-4.45%	-3.42%	-24.36%	1.13
▲ S&P/BVLConsumer	1,110.73	0.52%	-1.17%	1.53%	-3.25%	0.68
▲ S&P/BVLIndustrials	223.91	-0.66%	-2.72%	-0.89%	-13.24%	0.75
▲ S&P/BVLFinancials	908.26	0.05%	-1.48%	-4.70%	0.24%	1.28
▲ S&P/BVLConstruction	219.40	0.14%	-4.03%	-4.56%	-22.58%	0.71
▼ S&P/BVLPublicSvcs	609.52	-0.33%	-1.52%	-0.64%	11.12%	0.17
▼ S&P/BVLElectricUtil	595.04	-0.33%	-1.52%	-0.64%	11.12%	0.17

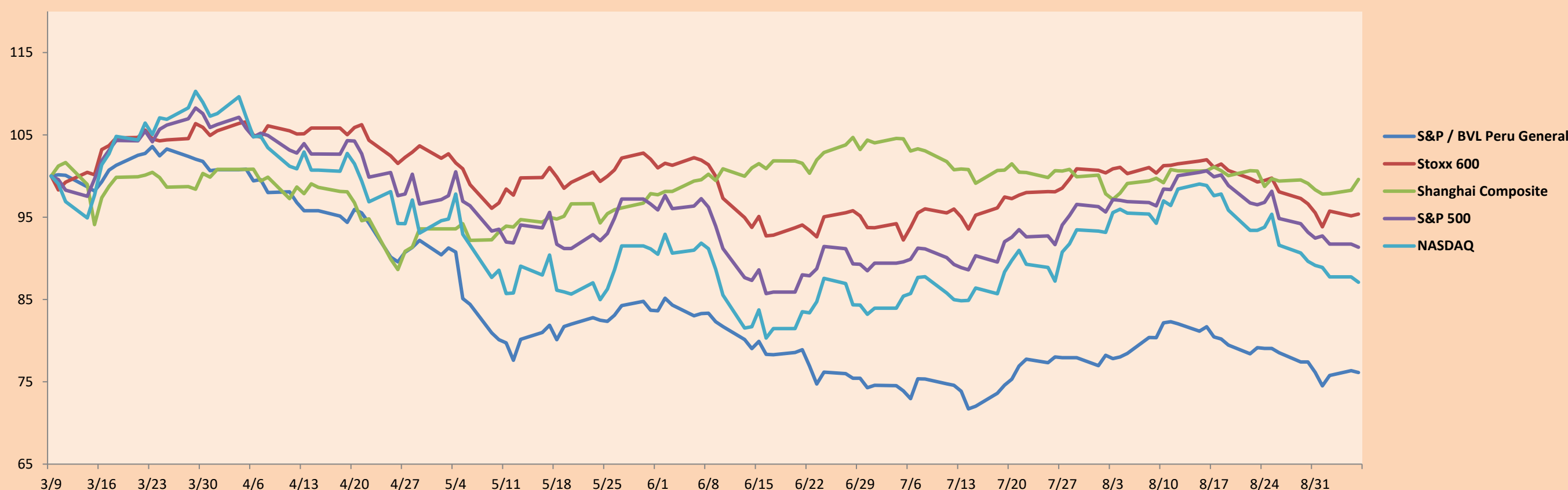
S&P/BVLConstructionTRPEN

*Legend: Variation 1D: 1 Day; 5D: 5 Days; 1M: 1 Month; YTD: Var.% 12/31/21 to date

Correlation Graph of Returns of Mining Index against Metallic Index of London (3 months)



Indices (6 months)



Base: 09/03/22=100
Source: Bloomberg

Capital Market Laboratory Coordinator: MS Javier Penny Pestana
Collaboration: Mariafe Urrutia, Fedele Calle, Miguel Solimano y Maciell Esquerre
email: pulsobursatil@ulima.edu.pe
facebook: www.facebook.com/pulsobursatil.ul

SOVEREIGN RATING

RISK RATINGS

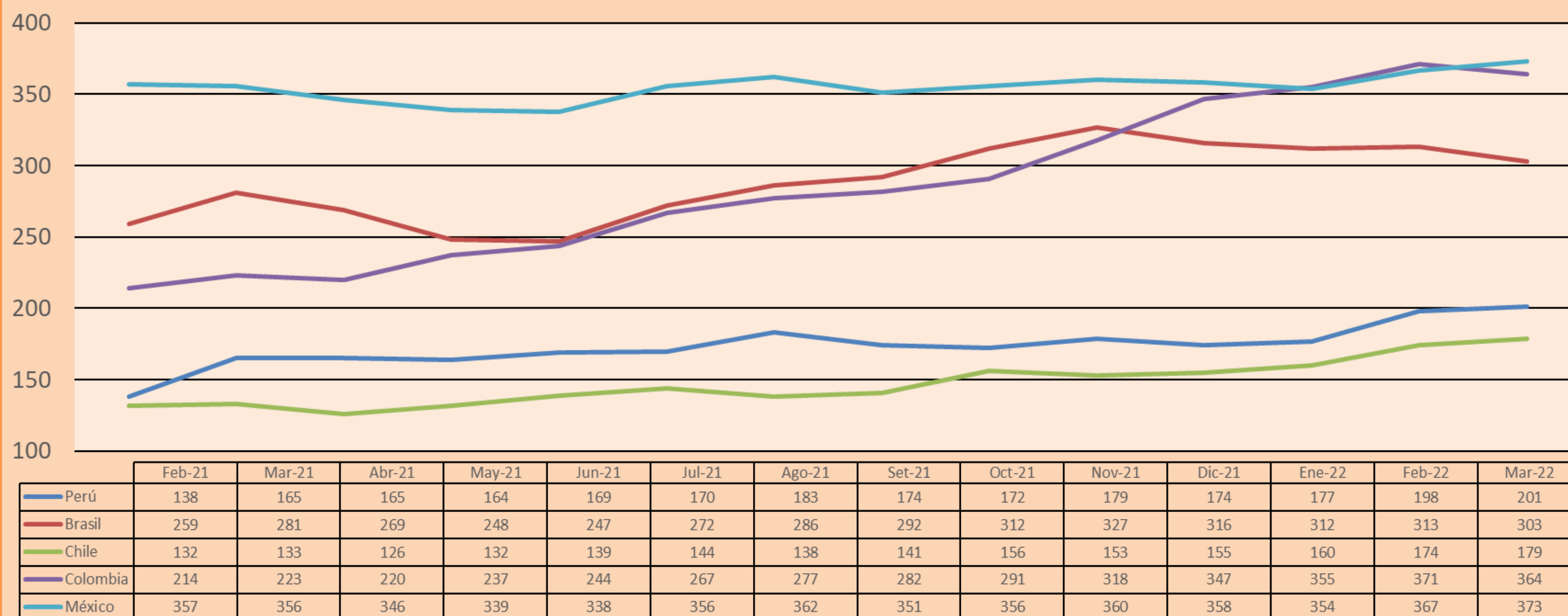
Moody's	S&P	Fitch	
Aaa	AAA	AAA	Prime
Aa1	AA+	AA+	High credit quality
Aa2	AA	AA	
Aa3	AA-	AA-	
A1	A+	A+	Medium-high grade, with low credit risk
A2	A	A	
A3	A-	A-	
Baa1	BBB+	BBB+	Moderate Credit Risk
Baa2	BBB	BBB	
Baa3	BBB-	BBB-	
Ba1	BB+	BB+	It has speculative elements and it is subject to substantial credit risk
Ba2	BB	BB	
Ba3	BB-	BB-	
B1	B+	B+	It is considered speculative and it has high credit risk
B2	B	B	
B3	B-	B-	
Caa1	CCC+	CCC	
Caa2	CCC	CCC	
Caa3	CCC-	CCC	
Ca	CC		Very close to default or in default
	C		
C	D	DDD DD D	

Source: Bloomberg

Latin America Credit Rating			
Clasificadora de riesgo			
Country	Moody's	Fitch	S&P
Peru	Baa1	BBB	BBB
México	Ba2	BB-	BB-
Venezuela	C	WD	NR
Brazil	Ba2	BB-	BB-
Colombia	Baa2	BB+	BB+
Chile	A1	A-	A
Argentine	Ca	WD	CCC+
Panama	Baa2	BBB-	BBB

Source: Bloomberg

LATAM Country Risk(bps)



Source: BCRP

Capital Market Laboratory Coordinator: MS Javier Penny Pestana
Collaboration: Mariafe Urrutia, Fedele Calle, Miguel Solimano y Maciell Esquerre
email: pulsobursatil@ulima.edu.pe
facebook: www.facebook.com/pulsobursatil.ul