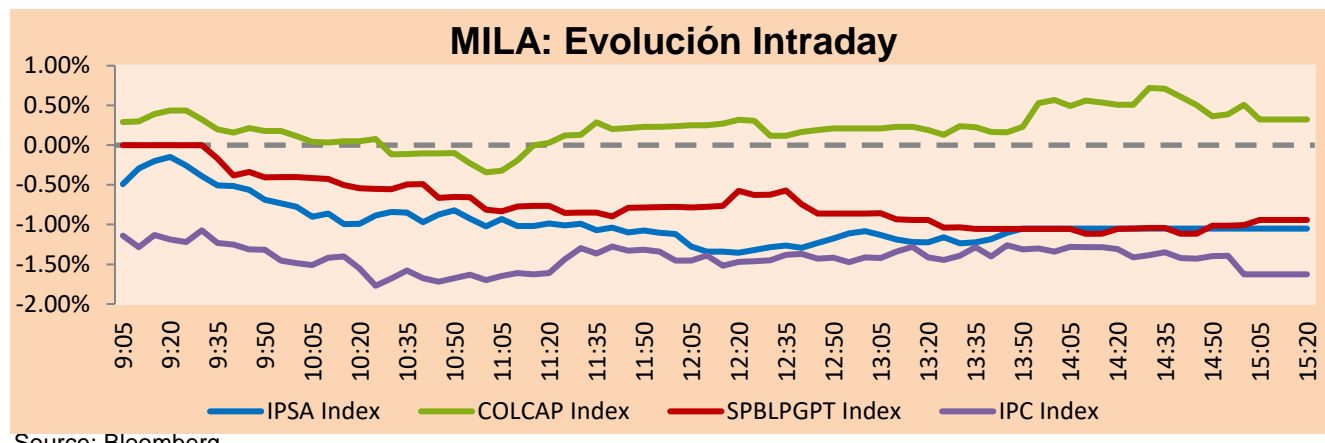


MILA

Lima, Sep 22, 2022

Main Indexes	Close	1 D	5 D	1 M	YTD	Cap. Burs. (US\$ bill)
▼ IPSA (Chile)	5,303.06	-1.23%	-4.97%	-0.70%	23.09%	99.41
▼ IGPA (Chile)	28,681.08	-1.94%	-4.75%	1.19%	32.99%	114.07
▲ COLSC (Colombia)	868.96	0.75%	2.99%	-0.86%	-10.70%	3.50
▲ COLCAP (Colombia)	1,201.61	0.32%	-1.00%	-7.09%	-14.84%	57.24
▼ S&P/BVL (Perú)*	19,474.31	-0.94%	0.59%	0.34%	-7.76%	79.12
▼ S&P/BVL SEL (Perú)	508.93	-0.65%	0.09%	-0.07%	-9.69%	65.82
▼ S&P/BVL LIMA 25	28,084.50	-0.86%	0.43%	0.41%	-7.23%	78.62
▼ IPC (México)	46,324.92	-1.42%	-0.90%	-3.52%	-13.04%	302.18
▼ S&P MILA 40	429.25	-1.17%	-3.14%	-2.01%	-3.51%	6,027.38

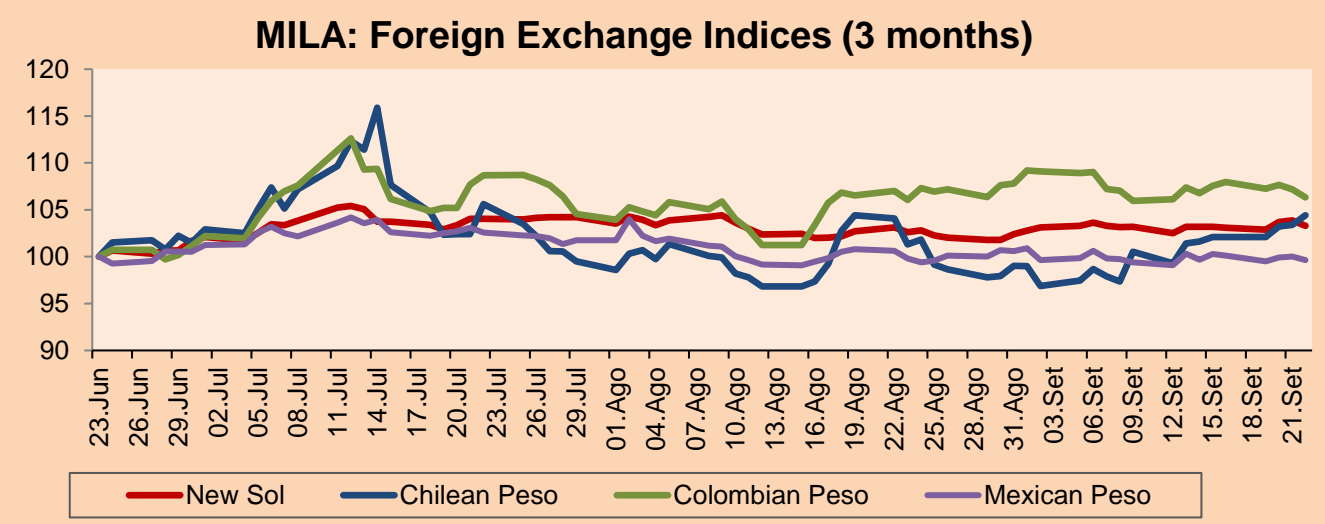
*Legend: Variation 1D: 1 day; 5D: 5 days; 1M: 1 Month; YTD: Var% 12/31/21 to date



Source: Bloomberg

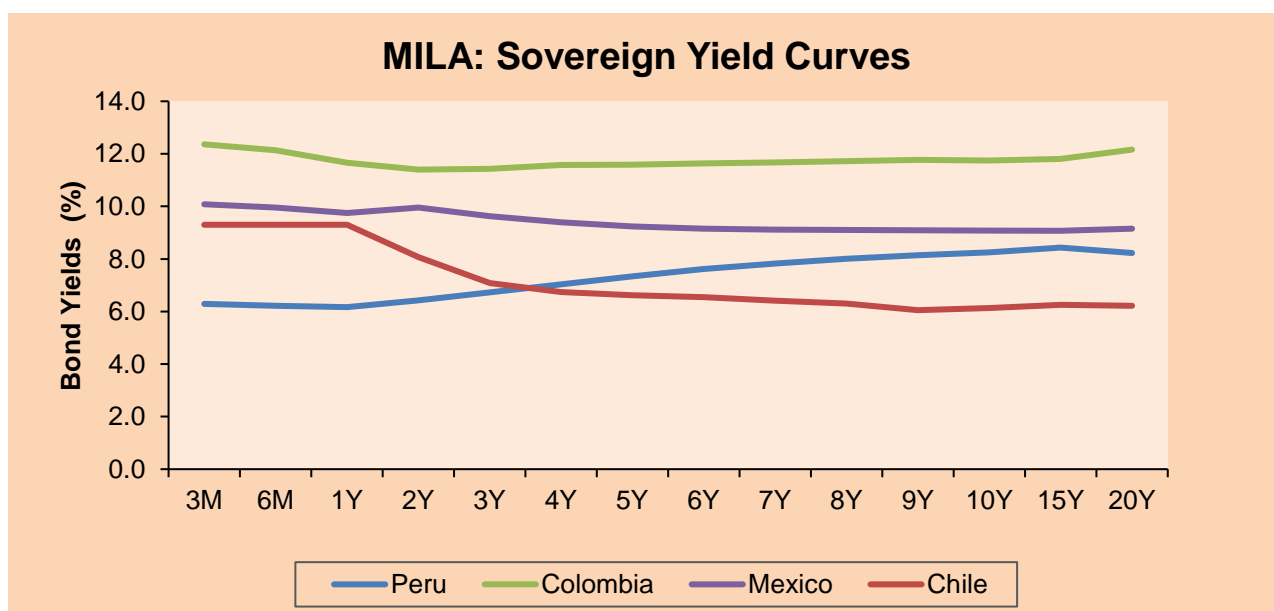
Currency	Price	1D*	5D*	30 D*	YTD*
▼ Sol (PEN)	3.8873	-0.54%	0.10%	0.66%	-2.80%
▲ Chilean Peso (CLP)	944.70	0.99%	2.27%	3.05%	10.88%
▲ Colombian Peso (COP)	4,367.91	-0.81%	-1.15%	0.24%	7.05%
▼ Mexican Peso (MXN)	19.95	-0.37%	-0.62%	-0.17%	-2.84%

*Legend: Variation 1D: 1 day; 5D: 5 days; 1M: 1 Month; YTD: Var% 12/31/21 to date



Base: 23/06/22=100
Source: Bloomberg

Fixed Income	Currency	Price	Bid Yield (%)	Ask Yield (%)	Duration
PERU 7.35 07/21/25	USD	106.35	5.00	4.81	2.52
PERU 4.125 08/25/27	USD	96.519	4.99	4.87	4.36
PERU 8.75 11/21/33	USD	124.901	5.74	5.66	7.37
PERU 6.55 03/14/37	USD	106.028	5.96	5.89	9.01
PERU 5.625 11/18/2050	USD	99.232	5.71	5.65	13.73
CHILE 2.25 10/30/22	USD	99.785	6.33	2.67	0.09
CHILE 3.125 01/21/26	USD	94.529	5.01	4.85	3.09
CHILE 3.625 10/30/42	USD	75.645	5.72	5.62	12.96
COLOM 11.85 03/09/28	USD	118.768	7.66	7.51	4.11
COLOM 10.375 01/28/33	USD	121.688	7.45	7.24	6.59
COLOM 7.375 09/18/37	USD	91.478	8.43	8.34	8.71
COLOM 6.125 01/18/41	USD	77.635	8.59	8.54	9.78
MEX 4 10/02/23	USD	77.635	8.587	8.541	9.78
MEX5.55 01/45	USD	89.621	6.46	6.41	12.09



Source: Bloomberg

Equity

Largest gains	Exchange	Currency	Price	▲%	Largest losses	Exchange	Currency	Price	▼%
AMERICA MOVIL-L	Mexico	MXN	17.49	5.05	PARQUE ARAUCO	Chile	CLP	818	-10.10
WALMART DE MEXIC	Mexico	MXN	76.10	3.72	CENCOSUD SHOPPIN	Chile	CLP	973	-9.91
SURAMERICANA	Colombia	COP	37800.00	2.72	CENCOSUD SA	Chile	CLP	1261	-5.90
GRUPO AVAL SA-PF	Colombia	COP	667.00	2.63	INDUSTRIAS PENOL	Mexico	MXN	192.91	-5.54
CORFICOLOMBIANA	Colombia	COP	17000.00	1.86	SONDA SA	Chile	CLP	340.38	-5.45

Per Turnover	Exchange	Amount (US\$)	Per Volume	Exchange	Volume
WALMART DE MEXIC	Mexico	82,517,726	BANCO DE CHILE	Chile	406,732,752
AMERICA MOVIL-L	Mexico	80,981,229	ITAU CORPBANCA	Chile	344,697,485
GRUPO F BANORT-O	Mexico	64,136,124	ENEL CHILE SA	Chile	168,061,080
BANCO DE CHILE	Chile	37,438,334	BANCO SANTANDER	Chile	141,179,862
SOQUIMICH-B	Chile	30,787,161	AMERICA MOVIL-L	Mexico	92,963,150

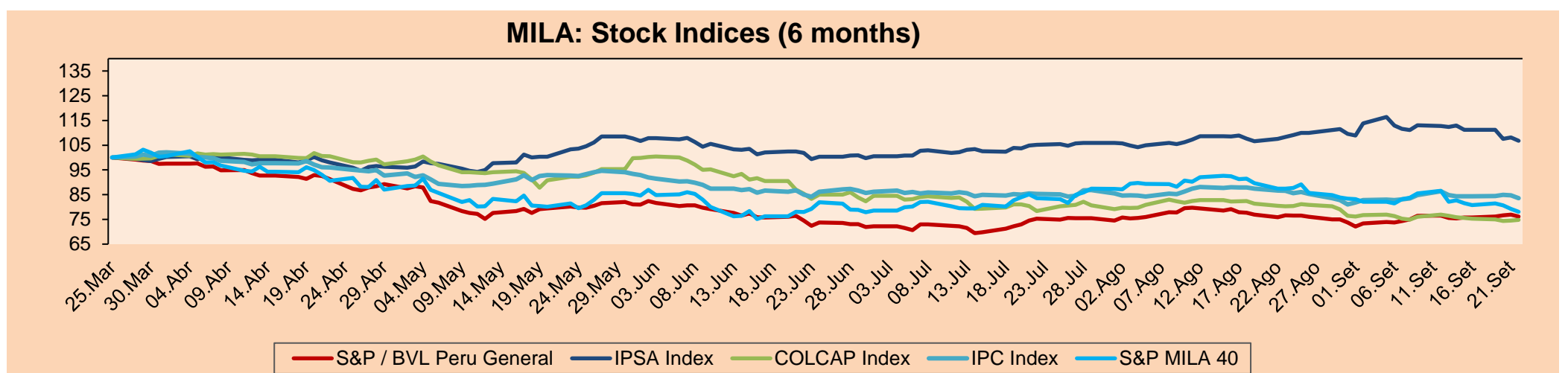
MILA

Peru: The BVL General index ended today's session with a negative result of -0.94%. The index maintains a negative annual cumulative trend of -7.76% in local currency, while the dollar-adjusted performance amounted to -5.10%. Next, the S&P/BVL Peru SEL varied by -0.65% while the S&P/BVL LIMA 25 by -0.86%. The PEN spot reached S/.3.8873. Headline: 45% of Peruvians still save under the mattress, this is the behavior by age.

Chile: The IPSA index ended the day with a negative return of -1.23%. The most negatively affected sectors of the session were Materials (-4.02%) and Energy (-2.56%). The worst performing stocks were Sociedad Química y Minera de Chile SA (-5.20%) and Cap SA (-4.28%). Headline: Chile will recover "in a very decisive way" fiscal responsibility.

Colombia: The COLCAP index ended the session with a positive return of +0.32%. The most benefited sectors of the day were Consumer Staples (+2.53%) and Financials (+0.90%). The best performing stocks were Grupo de Inversiones Suramericanas (+3.61%) and Promigas SA (+3.53%). Headline: The Colombian dollar closed the day below \$4,400.

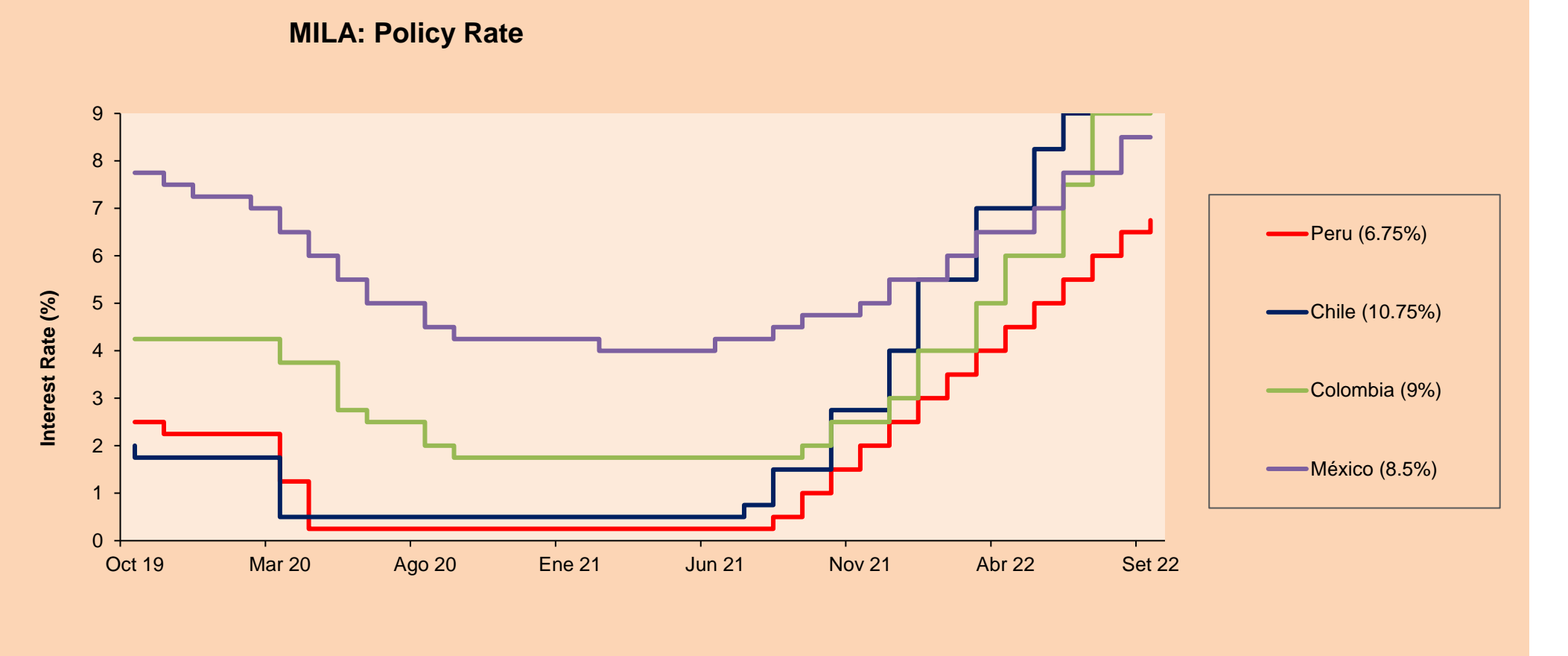
Mexico: The IPC index closed the day in positive negative territory of -1.42%. The sectors that lost the most during the day were Materials (-2.84%) and Real Estate (-2.62%). The worst performing stocks were Alsea SAB de CV (-4.60%) and Controladora Vuela Compañía de Aviación SAB de CV (-4.41%). Headline: Foreign holders of Crédito Real bonds plan to sue in Mexico.



Base: 28/03/22=100
Source: Bloomberg

ETFs

ETFs	Curr.	Close	1D	5D	30 D	YTD	Exchange
▼ iShares MSCI All Peru Caped Index Fund	USD	25.27	-0.47%	-1.25%	-3.62%	-14.69%	NYSE Arca
▼ iShares MSCI All Chile Caped Index Fund	USD	25.54	-1.69%	-5.51%	-4.70%	10.61%	Cboe BZX
- Global X MSCI Colombia	USD	9.02	0.00%	0.00%	0.00%	-9.74%	/A Field Not Applica
▼ iShares MSCI Mexico Capped	USD	46.3	-1.11%	0.22%	-2.26%	-8.50%	NYSE Arca
▼ iShares MSCI Emerging Markets	USD	36.89	-0.49%	-3.28%	-7.22%	-24.48%	NYSE Arca
▼ Vanguard FTSE Emerging Markets	USD	38.4	-0.29%	-4.43%	-7.54%	-22.36%	NYSE Arca
▼ iShares Core MSCI Emerging Markets	USD	45.5	-0.46%	-3.21%	-6.93%	-23.99%	NYSE Arca
▼ iShares JP Morgan Emerging Markets Bonds	USD	52.24	-0.50%	-2.57%	-5.82%	-16.84%	Cboe BZX
▼ Morgan Stanley Emerging Markets Domestic	USD	4.33	-0.23%	-0.69%	-4.42%	-20.99%	New York



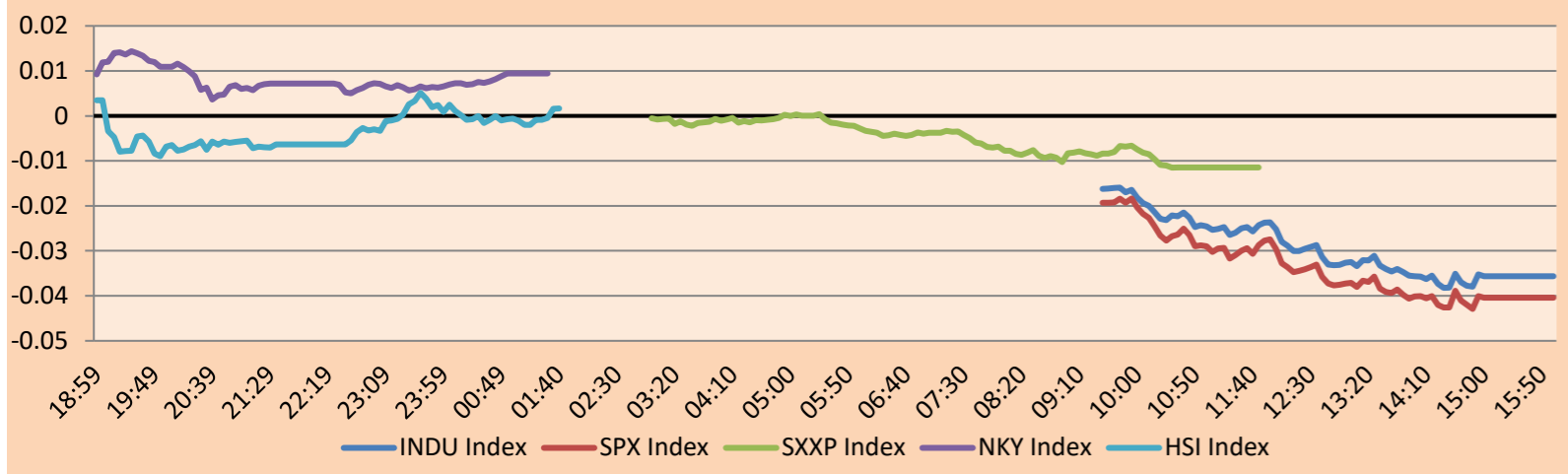
Source: Bloomberg

WORLD

Main Indices	Close	1 D*	5 D*	1 M*	YTD*	Market Cap. (US\$ Mill.)
▼ Dow Jones (USA)	30,076.68	-0.35%	-2.86%	-9.03%	-17.23%	9,550,721
▼ Standard & Poor's 500 (EEUU)	3,757.99	-0.84%	-3.67%	-9.18%	-21.15%	33,295,403
▼ NASDAQ Composite (USA)	11,066.80	-1.37%	-4.20%	-10.62%	-29.26%	19,034,524
▼ Stoxx EUROPE 600 (Europe)	399.76	-1.79%	-3.62%	-7.71%	-18.05%	11,241,570
▼ DAX (Germany)	12,531.63	-1.84%	-3.28%	-5.28%	-21.11%	1,331,009
▼ FTSE 100 (United Kingdom)	7,159.52	-1.08%	-1.62%	-4.97%	-3.05%	1,742,399
▼ CAC 40 (France)	5,918.50	-1.87%	-3.89%	-7.22%	-17.26%	1,965,278
▼ IBEX 35 (Spain)	7,774.70	-1.24%	-3.84%	-6.16%	-10.78%	528,374
▼ MSCI AC Asia Pacific Index	148.00	-1.70%	-2.99%	-7.29%	-23.36%	20,187,273
▼ HANG SENG (Hong kong)	18,147.95	-1.61%	-4.13%	-6.95%	-22.44%	2,841,716
▼ SHANGHAI SE Comp. (China)	3,108.91	-0.27%	-2.84%	-5.11%	-14.59%	6,161,373
▼ NIKKEI 225 (Japan)	27,153.83	-0.58%	-2.39%	-4.57%	-5.69%	3,242,800
▼ S&P / ASX 200 (Australia)	6,700.20	-1.56%	-1.88%	-3.76%	-10.00%	1,488,923
▼ KOSPI (South Korea)	2,332.31	-0.63%	-2.89%	-4.23%	-21.67%	1,258,974

*Legend: Variation 1D: 1 Day; 5D: 5 Days; 1M: 1 Month; YTD: Var.% 12/31/21 to date

Mercado Evolución Intraday (var %)

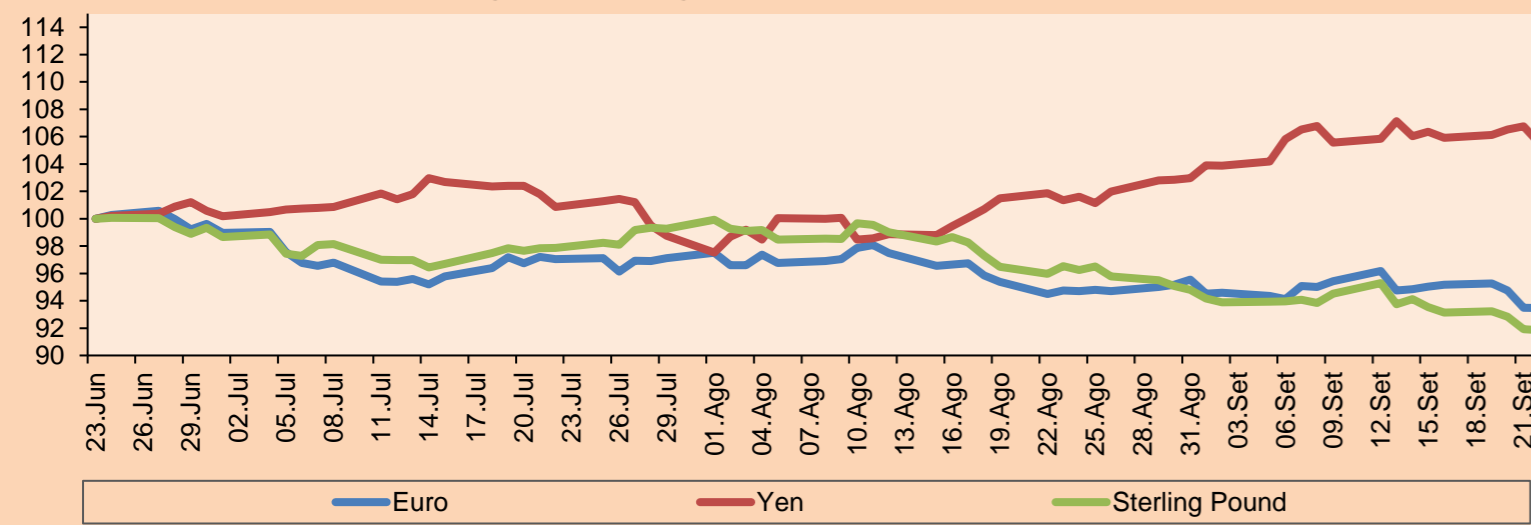


Source: Bloomberg

Currency	Price	1 D*	5 D*	1 M*	YTD*
▼ Euro	0.9836	-0.01%	-1.65%	-1.34%	-13.49%
▼ Yen	142.3900	-1.16%	-0.79%	4.11%	23.73%
▼ Sterling Pound	1.1261	-0.08%	-1.80%	-4.86%	-16.78%
▲ Yuan	7.0781	0.40%	1.19%	3.56%	11.36%
▼ Hong Kong Dollar	7.8495	-0.01%	0.01%	0.03%	0.68%
▼ Brazilian Real	5.1168	-1.09%	-2.49%	0.23%	-8.23%
▲ Argentine Peso	145.1700	0.21%	1.38%	6.00%	41.30%

*Legend: Variation 1D: 1 Day; 5D: 5 Days; 1M: 1 Month; YTD: Var.% 12/31/21 to date

Foreign Exchange Indices (3 months)

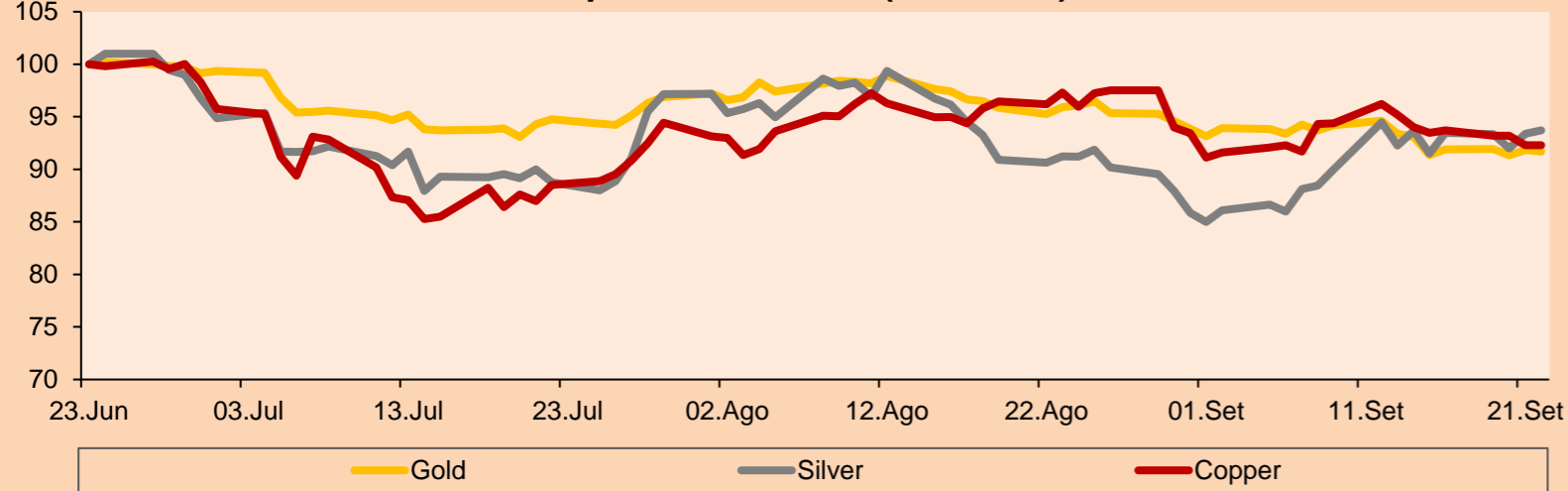


Base: 23/06/22=100
Source: Bloomberg

Commodities	Close	1 D*	5 D*	1 M*	YTD*
▼ Oro (US\$ Oz. T) (LME)	1,671.22	-0.16%	0.37%	-4.40%	-8.64%
▲ Plata (US\$ Oz. T) (LME)	19.64	0.34%	2.41%	2.71%	-15.76%
- Cobre (US\$ TM) (LME)	7,749.00	0.00%	-1.27%	-5.16%	-20.45%
- Zinc (US\$ TM) (LME)	3,112.00	0.00%	-3.17%	-12.30%	-13.31%
▲ Petróleo WTI (US\$ Barril) (NYM)	83.49	0.66%	-1.37%	-10.47%	18.63%
- Estaño (US\$ TM) (LME)	21,225.00	0.00%	1.39%	-13.96%	-46.09%
- Plomo (US\$ TM) (LME)	1,820.00	0.00%	-4.52%	-7.60%	-22.15%
▲ Azúcar #11 (US\$ Libra) (NYB-ICE)	18.00	1.07%	0.67%	0.90%	-2.33%
▼ Cacao (US\$ TM) (NYB-ICE)	2,321.00	-1.32%	-2.36%	0.13%	-9.34%
▲ Café Arábica (US\$ TM) (NYB-ICE)	223.55	1.02%	3.30%	-2.06%	0.18%

*Leyenda: Variación 1D: 1 Día; 5D: 5 Días; 1M: 1 Mes; YTD: Var.% 31/12/21 a la fecha

Principal Metals Index (3 months)



Base: 23/06/22=100
Source: Bloomberg

Equity

Germany (Stocks from DAX Index)

Largest gains	Curr.	Price	▲ %	Exchange	Largest losses	Curr.	Price	▼ %	Exchange
BEI GY	EUR	99.2	-3.83	Xetra	PUM GY	EUR	54.18	-5.05	Xetra
LIN GY	EUR	278.5	-2.93	Xetra	EOAN GY	EUR	8.376	-0.24	Xetra
ENR GY	EUR	11.995	-2.80	Xetra	FRE GY	EUR	22.55	-3.51	Xetra
IFX GY	EUR	23.78	-4.50	Xetra	FME GY	EUR	30.52	-2.99	Xetra

Europe (Stocks from STOXX EUROPE 600)

Largest gains	Curr.	Price	▲ %	Exchange	Largest losses	Curr.	Price	▼ %	Exchange
FORTUM FH	EUR	14.3	7.92	Helsinki	OCDO LN	GBP	557.6	-3.03	Londres
BAVA DC	DKK	224.9	-8.32	Copenhagen	BPT LN	GBP	224.2	-5.56	Londres
PAH3 GY	EUR	72.34	0.47	Xetra	SESG FP	EUR	5.964	-1.00	EN Paris
ARGX BB	EUR	362.6	-3.07	EN Brussels	SKAB SS	SEK	142.8	-2.63	Stockholm

Global Overview:

United States:

The U.S. market closes with negative returns after Fed Chairman Jerome Powell said that premature monetary policy would be bad for the economy, so "a little pain" would be needed to bring inflation down. The DOW JONES index closed in negative territory after investors reacted to the Fed's latest aggressive move to control inflation by selling growth stocks, including technology companies. The S&P500 index ended with a negative performance led by the technology sector which has plunged 28% year-to-date due to the Fed's third consecutive rate hike to 4.6% in 2023. In relation, the forward price-to-earnings ratio of this indicator for stock valuation is at 16.8 times earnings. Technology and megacap growth stocks such as Amazon, Tesla and Nvidia fell between 1% and 5.5%. Finally, the NASDAQ index closed with negative performance in a context where the FED forecast that unemployment in the next two years will be 4.4%, higher than previously expected. On the airline side, companies such as United Airlines and America Airlines fell by 4.6% and 3.9%, after enjoying gains following the lifting of pandemic restrictions. Thus, DOW JONES -0.35%; S&P 500 -0.84%; NASDAQ -1.37% ended the day with negative results.

Europe:

Major European indices ended the session with negative returns. Meanwhile, the 10-year British Gilt yield increased its gains by more than 3.3%. On the other hand, the British finance minister is due to report news about supportive actions to defuse the energy crisis on Friday. The pan-European STOXX 600 index ended negative in a context where the consumer index has fallen by 3.5% to around -30. This situation is a consequence of the indefinite energy supply cut by Russia through Nord Stream 1 and the high inflation they are facing. The British market, reflected in the FTSE 100, ended with the lowest losses in two months, caused by the fall of the real estate sector. The Bank of England has tried to lessen the effects of inflation by increasing its interest rate by 50 basis points, its seventh consecutive increase. Sports Fashion shares were the hardest hit, falling 7.5%. Similarly, the German market, reflected in the DAX index, closed in negative territory, reaching a 2-month low, after the ECB Governing Council stated that European monetary policy will be even tighter. The French market declined this session, triggered by news of the Swiss National Bank and English interest rate hike. In addition, the situation of French businesses has worsened over the past 3 months due to European uncertainty. STMicroelectronics and Unibail-Rodamco fell by 5.7%. Thus, FTSE 100 -1.08%; CAC 40 -1.87%; DAX -1.84%; STOXX 600 -1.79% ended at negative levels.

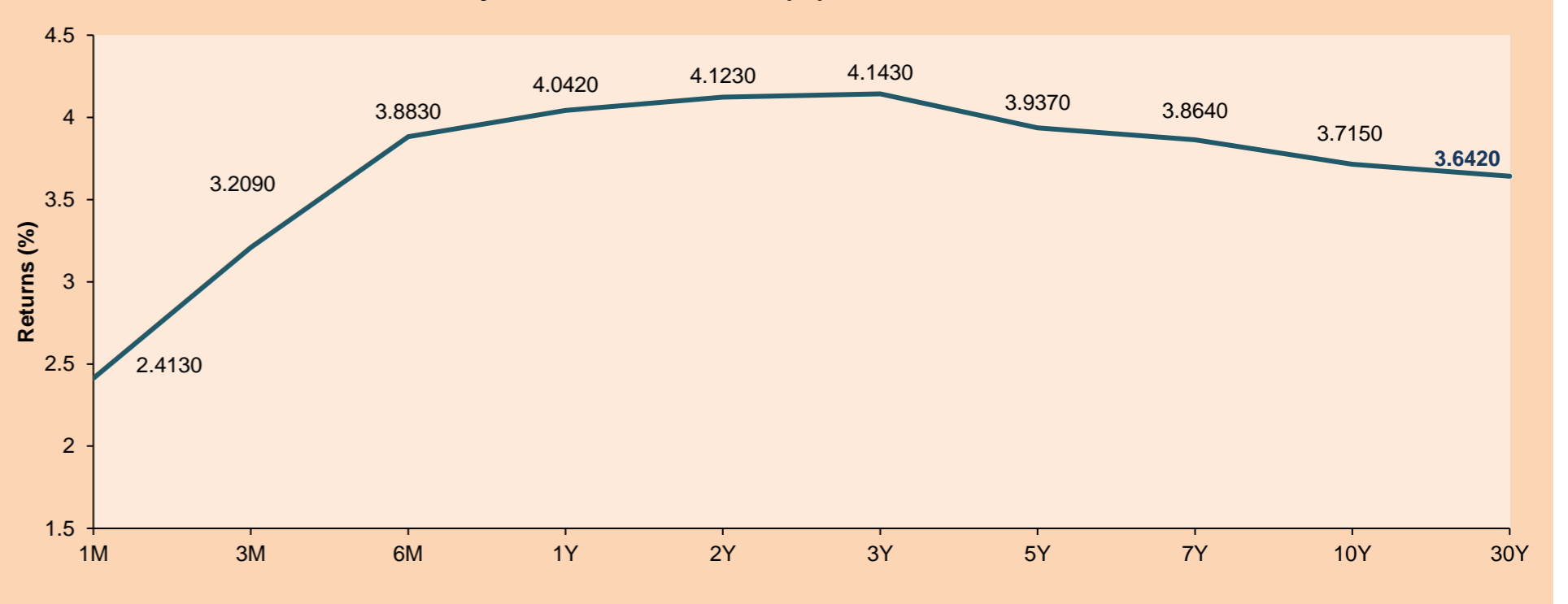
Asia:

Major Asian indices closed with mostly negative returns. The Chinese market closed in negative territory where, while the Fed rate hike weakened market sentiment, Chinese equities are plagued by unique challenges that reduce the likelihood of an imminent turnaround despite months of policy stimulus. The Hang Seng Index finished lower, hitting an 11-year low, as the Fed's rate hike dampened risk appetite. This, coupled with Beijing's stance to eradicate COVID-19 at all costs and geopolitical tensions with the U.S., discouraged investors. The South Korean market fell this session as the prospect of aggressive and prolonged monetary policy stoked concerns that it could plunge the U.S. economy into recession. The Japanese market fell this session following the Fed's decision to raise its benchmark rate once again by 75 bps. The Fed's tightening stance, coupled with Japan's continued loose monetary policy, sent the index to its lowest in more than two months. The Australian market did not trade this session as the National Day of Mourning for Her Majesty the Queen was taking place. Thus, NIKKEI -0.58%; HANG SENG -1.61%; CSI 300 -0.88%; S&P/ASX 200 -1.56%; KOSPI -0.63%; SHANGAI COMPOSITE -0.27% ended with negative performances.

ETFs

ETFs	Curr.	Close	1D	5D	30 D	YTD	Exchange
SPDR S&P 500 ETF TRUST	USD	374.22	-0.84%	-4.08%	-9.25%	-21.21%	NYSE Arca
ISHARES MSCI EMERGING MARKET	USD	36.89	-0.49%	-3.28%	-7.22%	-24.48%	NYSE Arca
ISHARES IBOXX HIGH YLD CORP	USD	73.06	-0.60%	-1.20%	-4.21%	-16.03%	NYSE Arca
FINANCIAL SELECT SECTOR SPDR	USD	31.55	-1.68%	-5.43%	-7.34%	-19.21%	NYSE Arca
VANECK GOLD MINERS ETF	USD	23.74	-0.38%	0.00%	-7.63%	-25.88%	NYSE Arca
ISHARES RUSSELL 2000 ETF	USD	171.39	-2.25%	-5.64%	-10.24%	-22.95%	NYSE Arca
SPDR GOLD SHARES	USD	155.70	-0.06%	0.46%	-4.34%	-8.93%	NYSE Arca
ISHARES 20+ YEAR TREASURY BO	USD	105.27	-2.55%	-2.50%	-6.04%	-28.96%	NASDAQ GM
INVESCO QQQ TRUST SERIES 1	USD	280.07	-1.23%	-3.79%	-10.83%	-29.60%	NASDAQ GM
ISHARES BIOTECHNOLOGY ETF	USD	116.73	-1.00%	-5.90%	-6.89%	-23.52%	NASDAQ GM
ENERGY SELECT SECTOR SPDR	USD	75.70	-0.36%	-5.55%	-7.87%	-36.40%	NYSE Arca
PROSHARES ULTRA VIX ST FUTUR	USD	10.87	-0.46%	4.42%	8.16%	-12.55%	Cboe BZX
UNITED STATES OIL FUND LP	USD	68.97	0.42%	-1.13%	-10.23%	26.88%	NYSE Arca
ISHARES MSCI BRAZIL ETF	USD	32.20	3.07%	6.17%	0.31%	14.71%	NYSE Arca
SPDR S&P OIL & GAS EXP & PR	USD	129.01	-1.71%	-8.54%	-12.02%	34.57%	NYSE Arca
UTILITIES SELECT SECTOR SPDR	USD	72.60	-0.36%	-2.88%	-4.70%	1.42%	NYSE Arca
ISHARES US REAL ESTATE ETF	USD	86.94	-0.99%	-5.07%	-10.60%	-25.14%	NYSE Arca
SPDR S&P BIOTECH ETF	USD	78.09	-1.31%	-9.41%	-11.04%	-30.25%	NYSE Arca
ISHARES IBOXX INVESTMENT GRA	USD	105.11	-1.41%	-2.09%	-5.28%	-20.68%	NYSE Arca
ISHARES JP MORGAN USD EMERGI	USD	82.92	-0.67%	-2.06%	-4.77%	-23.97%	NASDAQ GM
REAL ESTATE SELECT SECT SPDR	USD	37.93	-0.94%	-5.97%	-11.97%	-26.79%	NYSE Arca
ISHARES CHINA LARGE-CAP ETF	USD	26.97	-0.59%	-5.10%	-8.11%	-26.27%	NYSE Arca
CONSUMER STAPLES SPDR	USD	70.58	-0.14%	-0.82%	-6.89%	-8.47%	NYSE Arca
VANECK JUNIOR GOLD MINERS	USD	28.88	-1.20%	-1.50%	-9.30%	-31.12%	NYSE Arca
SPDR BLOOMBERG HIGH YIELD BO	USD	89.95	-0.70%	-1.24%	-4.48%	-17.15%	NYSE Arca
VANGUARD REAL ESTATE ETF	USD	85.48	-1.27%	-5.32%	-11.05%	-26.32%	NYSE Arca
GRAYSCALE BITCOIN TRUST BTC	USD	11.74	0.69%	-2.98%	-13.23%	-65.72%	OTC US

USA Treasury Bonds Yield Curve (%)



Source: Bloomberg

LIMA

Stocks

	Ticker	Currency	Price	1D*	5D*	30D*	YTD*	Frequency	Volume (US\$)	Beta	Dividend Yield (%)	Price Earning	Market Cap. (M US\$)	Economic Sector*	Index Weight
▲	ALICORC1 PE**	S/.	6.00	0.75%	2.99%	-0.86%	-10.70%	100.00%	43,041	0.90	4.17	10.14	1,315.61	Industrial	3.53%
-	ATACOB1 PE**	S/.	0.08	0.00%	0.00%	0.00%	-33.33%	5.26%	306	#N/A N/A	0.00	-	20.17	Mining	1.02%
▲	BACKUS1 PE**	S/.	21.90	0.27%	4.29%	0.00%	6.83%	84.21%	15,061	0.79	15.66	6.81	7,555.36	Industrial	0.82%
▼	BAP PE**	US\$	129.38	-1.98%	1.12%	-2.35%	4.52%	89.47%	35,188	1.23	3.09	-	10,288.30	Diverse	5.82%
▼	BVN PE**	US\$	6.20	-0.16%	0.81%	13.97%	-15.07%	100.00%	71,426	1.44	1.13	-	1,708.93	Mining	5.88%
▲	CASAGRC1 PE**	S/.	8.50	0.95%	1.80%	3.66%	-6.59%	78.95%	24,579	1.35	63.55	5.64	184.19	Agricultural	1.31%
-	BBVAC1 PE**	S/.	1.50	0.00%	0.00%	0.00%	-9.64%	100.00%	392,922	0.73	7.04	5.58	2,848.58	Finance	2.85%
-	CORARE1 PE**	S/.	1.44	0.00%	5.11%	5.11%	-16.28%	73.68%	3	0.95	0.00	2.91	509.87	Industrial	1.72%
▼	CPACASC1 PE**	S/.	3.80	-1.30%	-4.76%	-5.00%	-23.23%	100.00%	3,207	0.82	0.00	10.56	447.40	Industrial	2.38%
▼	CVERDEC1 PE**	US\$	27.95	-0.18%	1.64%	-1.93%	-24.93%	68.42%	10,845	0.90	6.64	8.27	9,784.07	Mining	5.25%
-	ENGEPEC1 PE**	S/.	2.66	0.00%	0.38%	4.31%	-6.34%	84.21%	2,782	0.82	16.81	6.43	1,196.01	Public Services	1.44%
-	ENDISPC1**	S/.	3.95	0.00%	0.77%	-3.19%	-1.25%	42.11%	1,149	0.83	0.00	6.48	648.86	Public Services	0.98%
-	FERREYC1 PE**	S/.	2.22	0.00%	-3.48%	3.26%	8.29%	100.00%	28,555	0.91	11.70	4.48	540.29	Diverse	4.90%
▼	AENZAC1 PE**	S/.	0.76	-1.30%	-5.00%	-12.64%	-44.53%	78.95%	34,889	1.12	0.00	-	234.02	Diverse	4.05%
▲	IFS PE**	US\$	21.70	1.64%	-0.46%	-5.65%	-19.18%	100.00%	23,132	0.85	11.06	6.66	2,504.57	Diverse	7.22%
-	INRETC1 PE**	US\$	31.80	0.00%	3.92%	-4.79%	-9.01%	73.68%	71,233	0.88	4.31	20.33	3,458.15	Diverse	5.28%
-	LUSURC1 PE**	S/.	15.37	0.00%	0.00%	2.47%	7.94%	57.89%	2,036	0.00	0.00	12.60	1,925.36	Public Services	1.81%
▼	MINSUR1 PE**	S/.	3.95	-4.59%	1.28%	0.00%	0.00%	94.74%	22,095	1.10	11.10	1.38	2,929.50	Mining	3.09%
▲	PML PE**	US\$	0.09	12.50%	0.00%	0.00%	-25.00%	31.58%	10,070	-	0.00	-	22.47	Mining	2.12%
▼	SCCO PE**	US\$	45.79	-0.22%	-2.57%	-7.68%	-25.88%	89.47%	46,431	1.03	8.74	11.19	35,399.90	Industrial	2.12%
▼	SIDERC1 PE**	S/.	1.46	-5.81%	-7.01%	-8.75%	-8.75%	63.16%	28,370	0.83	28.44	3.53	262.91	Mining	2.14%
-	TV PE**	US\$	-	-	-	-	-	0.00%	-	1.27	0.00	-	-	Industrial	1.43%
-	UNACEMC1 PE**	S/.	1.60	0.00%	1.27%	-5.88%	-33.33%	78.95%	42	1.02	0.00	-	748.34	Mining	2.93%
▼	VOLCABC1 PE**	S/.	0.61	-1.61%	-1.61%	-1.61%	1.67%	100.00%	14,129	1.46	0.00	12.55	1,580.93	Industrial	3.00%
-	BROCALC1 PE**	S/.	4.91	0.00%	0.00%	5.59%	-5.58%	21.05%	3,789	0.00	0.00	35.49	205.25	Mining	5.90%
-	RIMSEGC1 PE**	S/.	0.71	0.00%	0.00%	0.00%	-17.44%	5.26%	325	0.00	0.00	10.49	301.69	Finance	3.09%
▲	CORAREC1 PE**	US\$	1.93	0.52%	0.52%	1.05%	1.58%	21.05%	193,000	0.00	7.95	3.90	1,982.02	Mining	2.12%
-	ENGIEC1 PE**	S/.	5.40	0.00%	0.00%	-1.82%	-7.85%	21.05%	91	#N/A N/A	0.00	16.95	835.39	Diversas	2.12%
-	GBVLAC1 PE**	S/.	2.42	0.00%	-3.59%	-2.81%	-11.03%	31.58%	3,113	0.00	0.00	-	113.40	Diversas	2.14%

Quantity of shares: 28
 Source: Bloomberg, Economática
 * Bloomberg Industry Classification System
 ** PER is used in the stock market and original currency of the instrument
 *Legend: Variation 1D: 1 Day; 5D: 5 Days; 1M: 1 Month; YTD: Var.% 12/31/21 to date

Up 7
 Down 9
 Hold 12

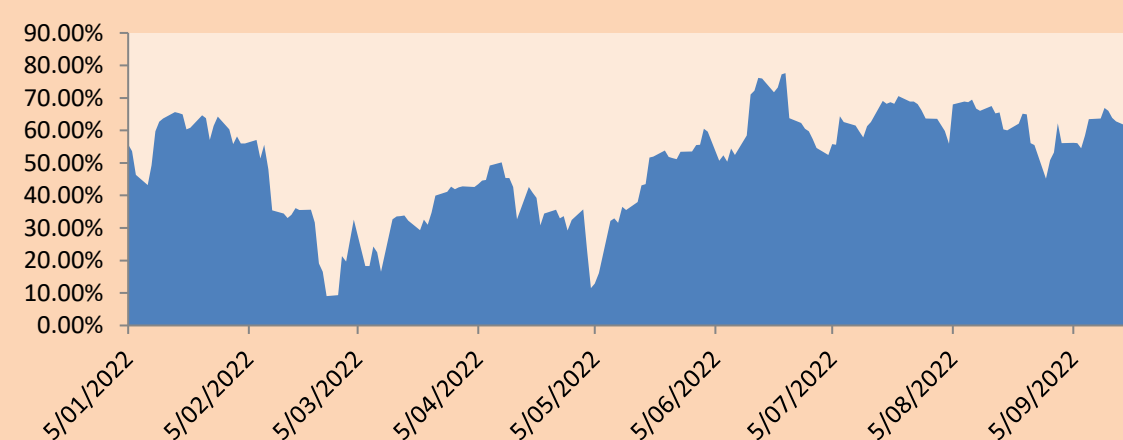
Sectorial Indices

		Close	1D*	5D*	30D*	YTD*	Beta
▼	S&P/BVLMining	322.21	-1.00%	-1.23%	-2.35%	-21.72%	1.11
▲	S&P/BVLConsumer	1,152.17	0.36%	2.40%	-1.38%	0.36%	0.69
▲	S&P/BVLIndustrials	228.41	-0.32%	0.13%	-0.13%	-11.49%	0.78
▼	S&P/BVLFinancials	926.79	-2.25%	0.94%	-2.06%	2.28%	1.21
▼	S&P/BVLConstruction	218.51	-0.48%	-0.93%	-4.57%	-22.89%	0.75
-	S&P/BVLPublicSvcs	623.48	0.00%	0.24%	0.17%	13.67%	0.15
-	S&P/BVLElectricUtil	608.67	0.00%	0.24%	0.17%	13.67%	0.15

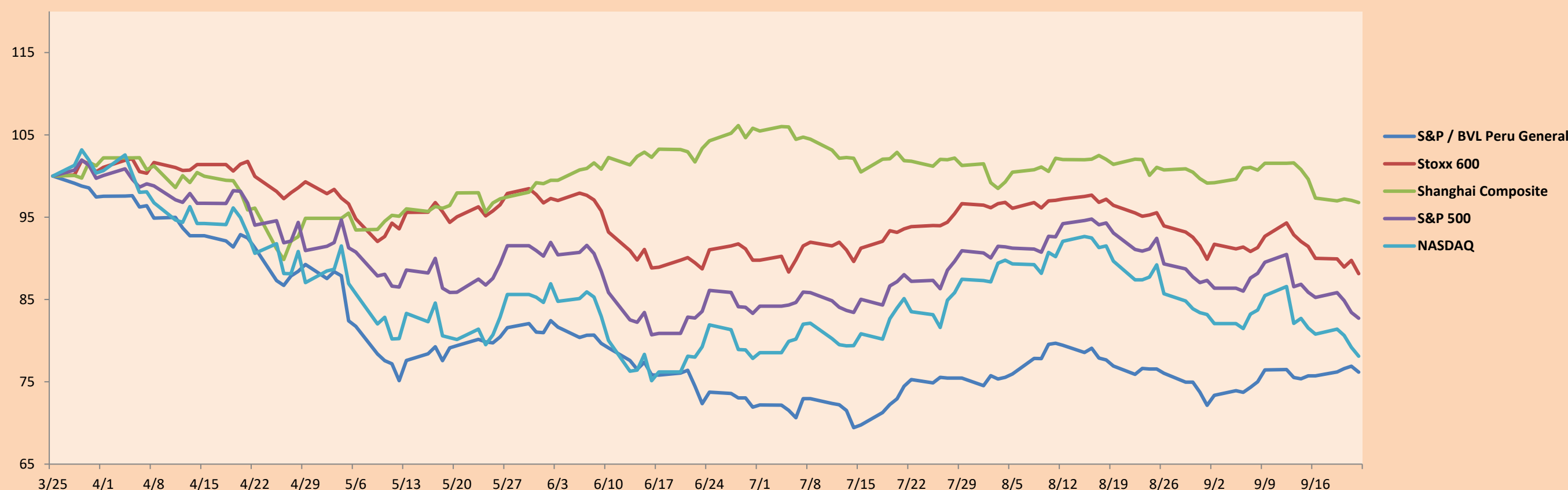
S&P/BVLConstructionTRPEN

*Legend: Variation 1D: 1 Day; 5D: 5 Days; 1M: 1 Month; YTD: Var.% 12/31/21 to date

Correlation Graph of Returns of Mining Index against Metallic Index of London (3 months)



Indices (6 months)



Base: 25/03/22=100
 Source: Bloomberg

Capital Market Laboratory Coordinator: MS Javier Penny Pestana
 Collaboration: Mariafe Urrutia, Fedele Calle, Miguel Solimano y Maciell Esquerre
 email: pulsobursatil@ulima.edu.pe
 facebook: www.facebook.com/pulsobursatil.ul

SOVEREIGN RATING

RISK RATINGS

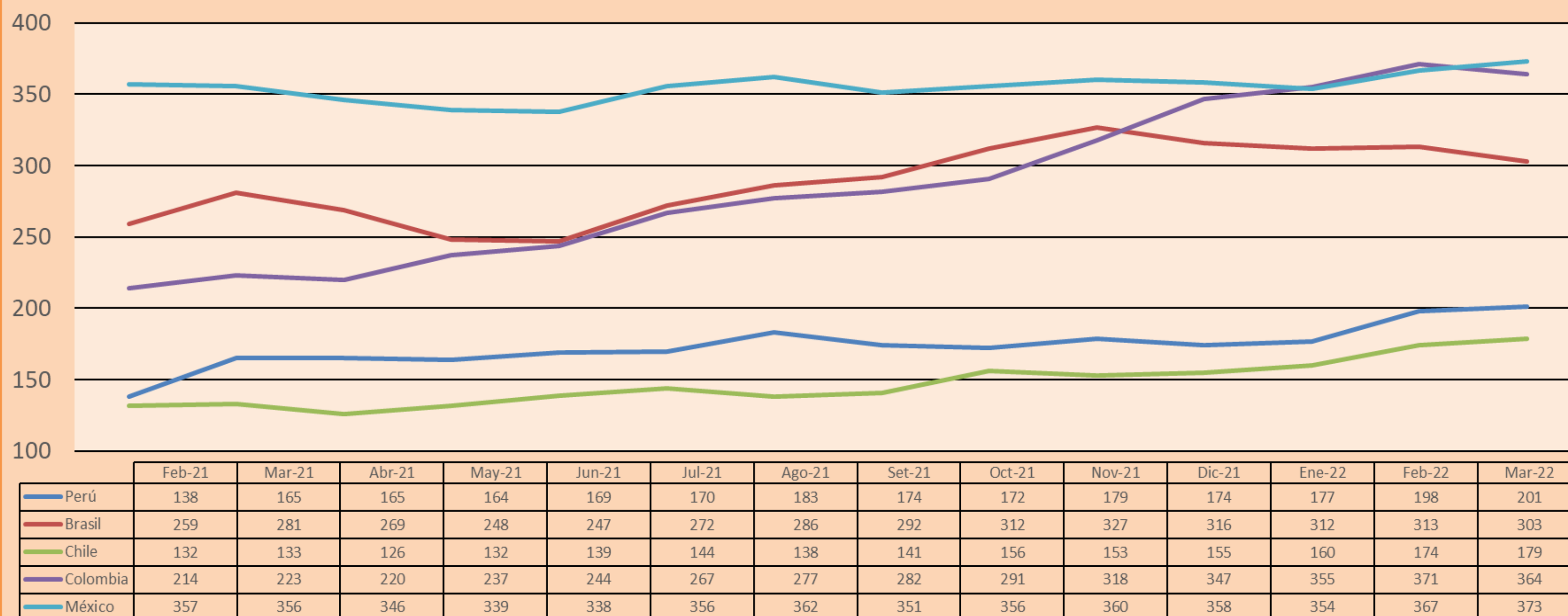
Moody's	S&P	Fitch	
Aaa	AAA	AAA	Prime
Aa1	AA+	AA+	High credit quality
Aa2	AA	AA	
Aa3	AA-	AA-	
A1	A+	A+	Medium-high grade, with low credit risk
A2	A	A	
A3	A-	A-	
Baa1	BBB+	BBB+	Moderate Credit Risk
Baa2	BBB	BBB	
Baa3	BBB-	BBB-	
Ba1	BB+	BB+	It has speculative elements and it is subject to substantial credit risk
Ba2	BB	BB	
Ba3	BB-	BB-	
B1	B+	B+	It is considered speculative and it has high credit risk
B2	B	B	
B3	B-	B-	
Caa1	CCC+	CCC	
Caa2	CCC	CCC	
Caa3	CCC-	CCC	
Ca	CC		Very close to default or in default
	C		
C	D	DDD DD D	

Source: Bloomberg

Latin America Credit Rating			
Clasificadora de riesgo			
Country	Moody's	Fitch	S&P
Peru	Baa1	BBB	BBB
México	Ba2	BB-	BB-
Venezuela	C	WD	NR
Brazil	Ba2	BB-	BB-
Colombia	Baa2	BB+	BB+
Chile	A2	A-	A
Argentine	Ca	WD	CCC+
Panama	Baa2	BBB-	BBB

Source: Bloomberg

LATAM Country Risk(bps)



Source: BCRP

Capital Market Laboratory Coordinator: MS Javier Penny Pestana
Collaboration: Mariafe Urrutia, Fedele Calle, Miguel Solimano y Maciell Esquerre
email: pulsobursatil@ulima.edu.pe
facebook: www.facebook.com/pulsobursatil.ul