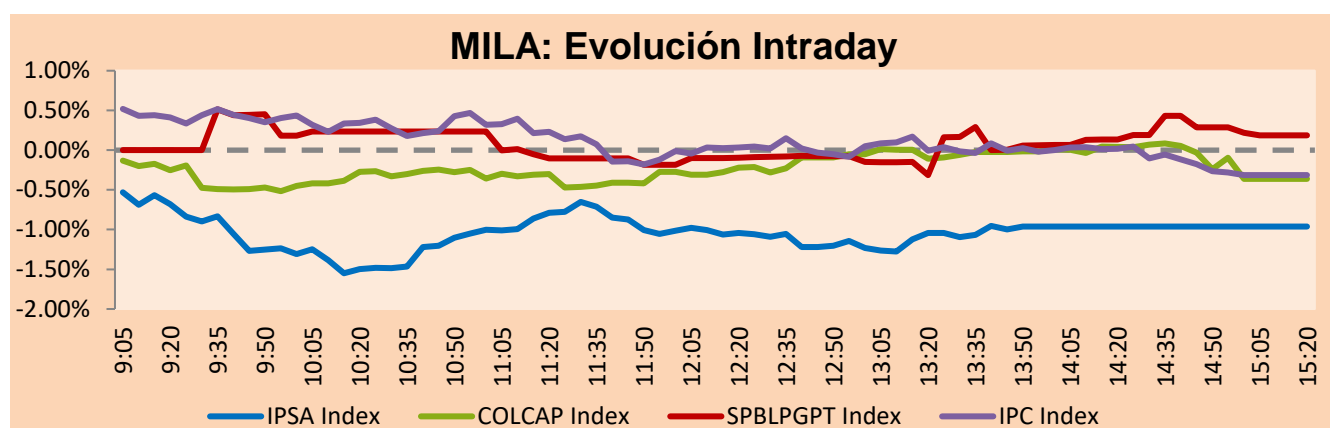


MILA

Lima, october 12, 2022

Main Indexes	Close	1 D	5 D	1 M	YTD	Cap. Burs. (US\$ bill)
▼ IPSA (Chile)	4,936.57	-1.05%	-5.95%	-11.79%	14.58%	92.88
▼ IGPA (Chile)	26,474.24	-1.93%	-6.97%	-11.97%	22.75%	107.30
▲ COLSC (Colombia)	935.94	0.58%	-0.89%	9.31%	-3.82%	3.50
▼ COLCAP (Colombia)	1,176.64	-0.36%	-3.19%	-4.77%	-16.61%	53.85
▲ S&P/BVL (Perú)*	19,866.95	0.19%	-1.98%	1.58%	-5.90%	79.95
▲ S&P/BVL SEL (Perú)	524.16	0.81%	-1.56%	2.25%	-6.99%	67.00
▲ S&P/BVL LIMA 25	28,286.59	0.06%	-1.41%	0.71%	-6.56%	79.46
▼ IPC (México)	45,679.84	-0.25%	-0.36%	-4.56%	-14.25%	292.05
▼ S&P MILA 40	405.98	-1.75%	-4.61%	-11.61%	-8.74%	5,839.05

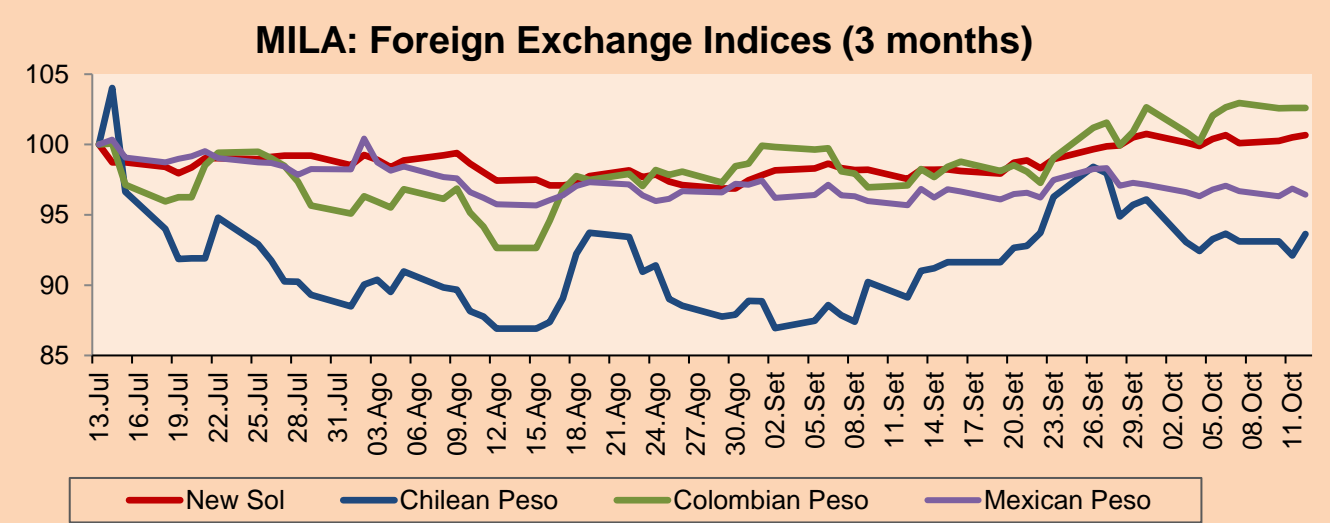
*Legend: Variation 1D: 1 day; 5D: 5 days; 1M: 1 Month; YTD: Var% 12/31/21 to date



Source: Bloomberg

Currency	Price	1D*	5D*	30 D*	YTD*
▲ Sol (PEN)	3,980.2	0.16%	0.28%	3.20%	-0.47%
▲ Chilean Peso (CLP)	943.90	1.68%	0.40%	5.07%	10.79%
▲ Colombian Peso (COP)	4,607.33	0.00%	0.55%	5.68%	12.92%
▼ Mexican Peso (MXN)	19.99	-0.44%	-0.38%	0.79%	-2.61%

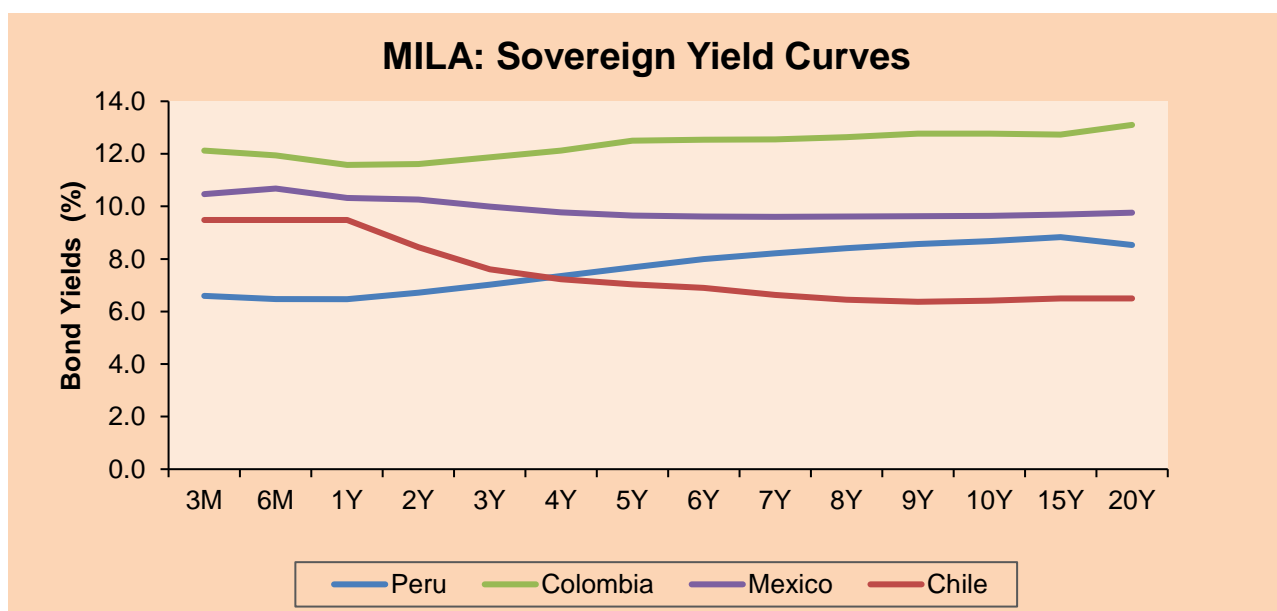
*Legend: Variation 1D: 1 day; 5D: 5 days; 1M: 1 Month; YTD: Var% 12/31/21 to date



Base: 13/07/22=100

Source: Bloomberg

Fixed Income	Currency	Price	Bid Yield (%)	Ask Yield (%)	Duration
PERU 7.35 07/21/25	USD	104.447	5.69	5.49	2.46
PERU 4.125 08/25/27	USD	93.877	5.65	5.51	4.29
PERU 8.75 11/21/33	USD	119.243	6.37	6.25	7.20
PERU 6.55 03/14/37	USD	100.353	6.56	6.47	8.80
PERU 5.625 11/18/2050	USD	92.493	6.22	6.16	13.06
CHILE 2.25 10/30/22	USD	99.95	9.25	-2.54	0.04
CHILE 3.125 01/21/26	USD	93.494	5.41	5.23	3.03
CHILE 3.625 10/30/42	USD	71.2	6.19	6.09	12.61
COLOM 11.85 03/09/28	USD	114.44	8.54	8.38	4.01
COLOM 10.375 01/28/33	USD	117.771	7.90	7.76	6.48
COLOM 7.375 09/18/37	USD	84.614	9.36	9.24	8.34
COLOM 6.125 01/18/41	USD	71.308	9.49	9.42	9.28
MEX 4 10/02/23	USD	71.308	9.486	9.416	9.28
MEX5.55 01/45	USD	85.307	6.88	6.81	11.70



Source: Bloomberg

Equity

Largest gains	Exchange	Currency	Price	▲%	Largest losses	Exchange	Currency	Price	▼%
CENCOSUD SHOPPIN	Chile	CLP	1074.40	3.82	INDUSTRIAS PENOL	Mexico	MXN	175.87	-6.73
ENGIE ENERGIA CH	Chile	CLP	460.01	3.56	VOLCAN CIA MIN-B	Peru	PEN	0.63	-5.97
SURAMERICANA	Colombia	COP	39900.00	2.94	BUENAVENTURA-ADF	Peru	USD	5.66	-5.67
CMPC	Chile	CLP	1734.00	2.91	GRUPO TELEV-CPO	Mexico	MXN	28.39	-4.28
AGUAS ANDINAS-A	Chile	CLP	194.91	2.58	ITAU CORPBANCA	Chile	CLP	1.952	-1.71

Per Turnover	Exchange	Amount (US\$)	Per Volume	Exchange	Volume
SOQUIMICH-B	Chile	66,852,705	ITAU CORPBANCA	Chile	578,361,654
CENCOSUD SA	Chile	45,868,545	ENEL CHILE SA	Chile	438,004,668
AMERICA MOVIL-L	Mexico	37,692,041	BANCO SANTANDER	Chile	287,410,957
GRUPO F BANORT-O	Mexico	27,076,117	BANCO DE CHILE	Chile	216,043,369
WALMART DE MEXIC	Mexico	22,054,928	ENEL AMERICAS SA	Chile	126,387,951

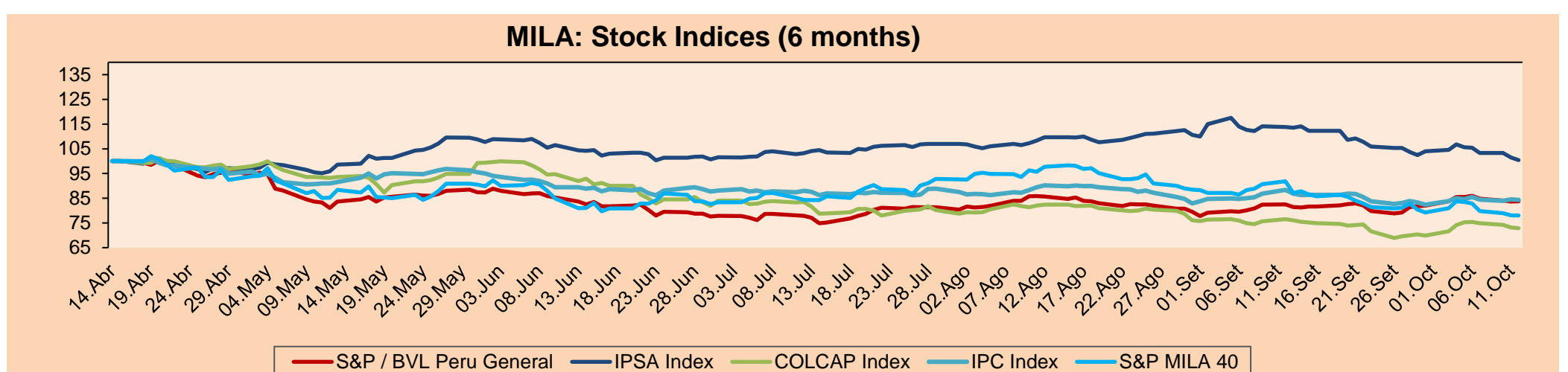
MILA

Peru: The BVL General index ended today's session with a positive result of +0.19%. The index maintains a negative cumulative annual trend of -5.90% in local currency and a negative cumulative trend of -5.45% in dollar-adjusted currency. Regarding the S&P/BVL Peru SEL, it varied +0.81% while the S&P/BVL LIMA 25 varied +0.06%. The spot PEN reached S/.3.9802. Headline: Fuel shortages at taps due to the fact that they are not selling the requested volumes.

Chile: The IPSA index ended the day with a negative return of -1.05%. The most damaged sectors of the day were Materials (-4.22%) and Industrials (-2.69%). The worst performing stocks were Sociedad Química y Minera de Chile SA (-5.93%) and Compañía Sudamericana de Valores SA (-4.11%). Headline: IMF: only Chilean economy would fall in the region in 2023, but GDP per capita would exceed US\$ 30 thousand and the following year.

Colombia: The COLCAP index ended the session with a negative return of -0.36%. The sectors that lost the most during the day were Utilities (-0.94%) and Energy (-0.62%). The worst performers were Cementos Argos SA (-7.42%) and Interconexión Eléctrica SA (-2.26%). Headline: Dollar remains above \$4.600 for the fifth consecutive day.

Mexico: The IPC index closed the day in negative territory at -0.25%. The sectors that lost the most during the day were Communication Services (-1.64%) and Materials (-1.11%). The lowest performing stocks were Industrias Penoles SAB de CV (-3.50%) and America Movil SAB (-2.32%). Headline: Mexico's debt will mark its second year of decline and will be lower than that of other emerging markets. will be lower than the rest of emerging markets: IMF.

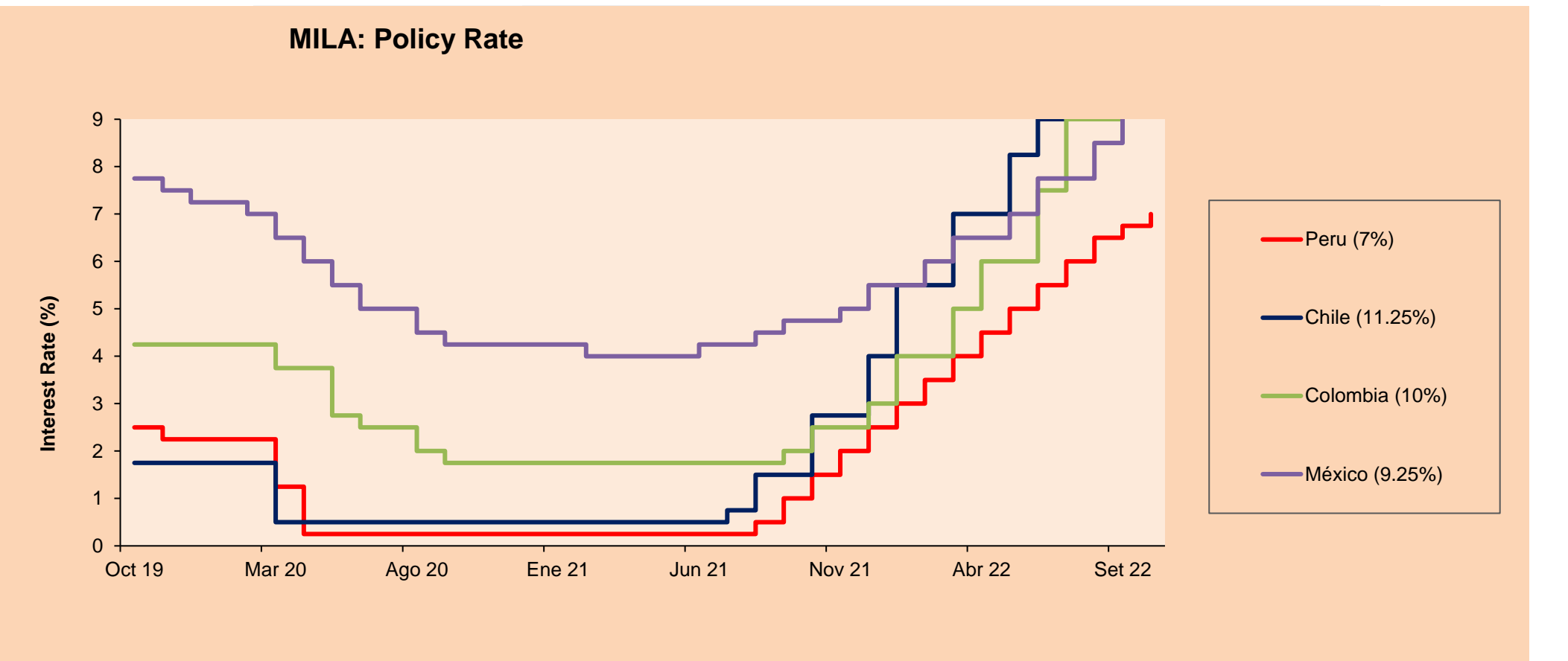


Base: 15/04/22=100

Source: Bloomberg

ETFs

ETFs	Curr.	Close	1D	5D	30 D	YTD	Exchange
▼ iShares MSCI All Peru Caped Index Fund	USD	25.35	-0.35%	-2.05%	-4.41%	-14.42%	NYSE Arca
▼ iShares MSCI All Chile Caped Index Fund	USD	23.51	-2.69%	-6.22%	-17.57%	1.82%	Cboe BZX
- Global X MSCI Colombia	USD	-	-	-	-	-	-
▲ iShares MSCI Mexico Capped	USD	45.64	0.26%	0.60%	-4.42%	-9.80%	NYSE Arca
▲ iShares MSCI Emerging Markets	USD	34.63	0.12%	-5.46%	-12.51%	-29.11%	NYSE Arca
▼ Vanguard FTSE Emerging Markets	USD	36.05	-0.03%	-5.53%	-13.45%	-27.11%	NYSE Arca
- iShares Core MSCI Emerging Markets	USD	42.71	0.00%	-5.22%	-12.35%	-28.65%	NYSE Arca
▲ iShares JP Morgan Emerging Markets Bonds	USD	50.26	0.20%	-3.70%	-8.41%	-19.99%	Cboe BZX
▼ Morgan Stanley Emerging Markets Domestic	USD	4	-0.25%	-3.61%	-10.71%	-27.01%	New York



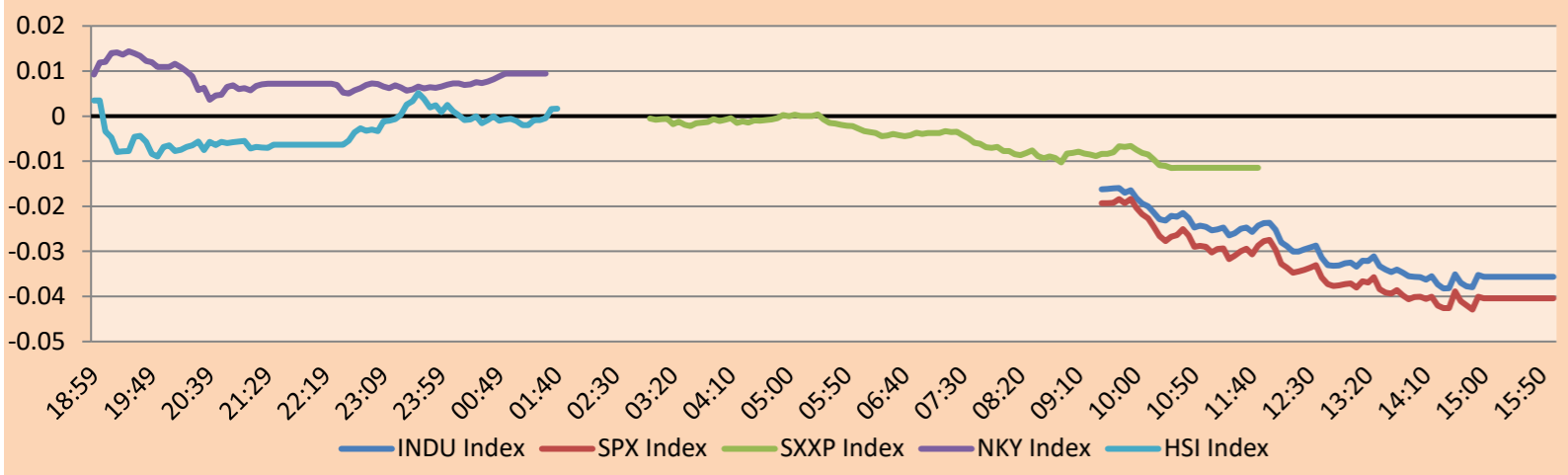
Source: Bloomberg

WORLD

Main Indices	Close	1 D*	5 D*	1 M*	YTD*	Market Cap. (US\$ Mill.)
▼ Dow Jones (USA)	29,210.85	-0.10%	-3.51%	-9.79%	-19.61%	9,025,168
▼ Standard & Poor's 500 (EEUU)	3,577.03	-0.33%	-5.45%	-12.98%	-24.95%	31,544,000
▼ NASDAQ Composite (USA)	10,417.10	-0.09%	-6.56%	-15.08%	-33.42%	17,656,125
▼ Stoxx EUROPE 600 (Europe)	385.88	-0.53%	-3.27%	-8.37%	-20.89%	11,007,747
▼ DAX (Germany)	12,172.26	-0.39%	-2.76%	-7.71%	-23.37%	1,314,545
▼ FTSE 100 (United Kingdom)	6,826.15	-0.86%	-3.21%	-7.58%	-7.56%	1,680,483
▼ CAC 40 (France)	5,818.47	-0.25%	-2.79%	-6.84%	-18.66%	1,964,321
▼ IBEX 35 (Spain)	7,261.10	-1.29%	-4.21%	-9.96%	-16.67%	498,685
▼ MSCI AC Asia Pacific Index	137.50	-0.17%	-4.85%	-11.47%	-28.68%	18,902,953
▼ HANG SENG (Hong kong)	16,701.03	-0.78%	-7.67%	-13.59%	-28.62%	2,577,555
▲ SHANGHAI SE Comp. (China)	3,025.51	1.53%	-0.64%	-7.30%	-16.88%	5,923,524
▲ NIKKEI 225 (Japan)	26,396.83	-0.02%	-2.21%	-7.75%	-8.32%	3,151,351
▲ S&P / ASX 200 (Australia)	6,647.54	0.04%	-2.47%	-5.17%	-10.71%	1,394,912
▲ KOSPI (South Korea)	2,202.47	0.47%	-0.31%	-10.09%	-26.03%	1,178,013

*Legend: Variation 1D: 1 Day; 5D: 5 Days; 1M: 1 Month; YTD: Var.% 12/31/21 to date

Mercado Evolución Intraday (var %)

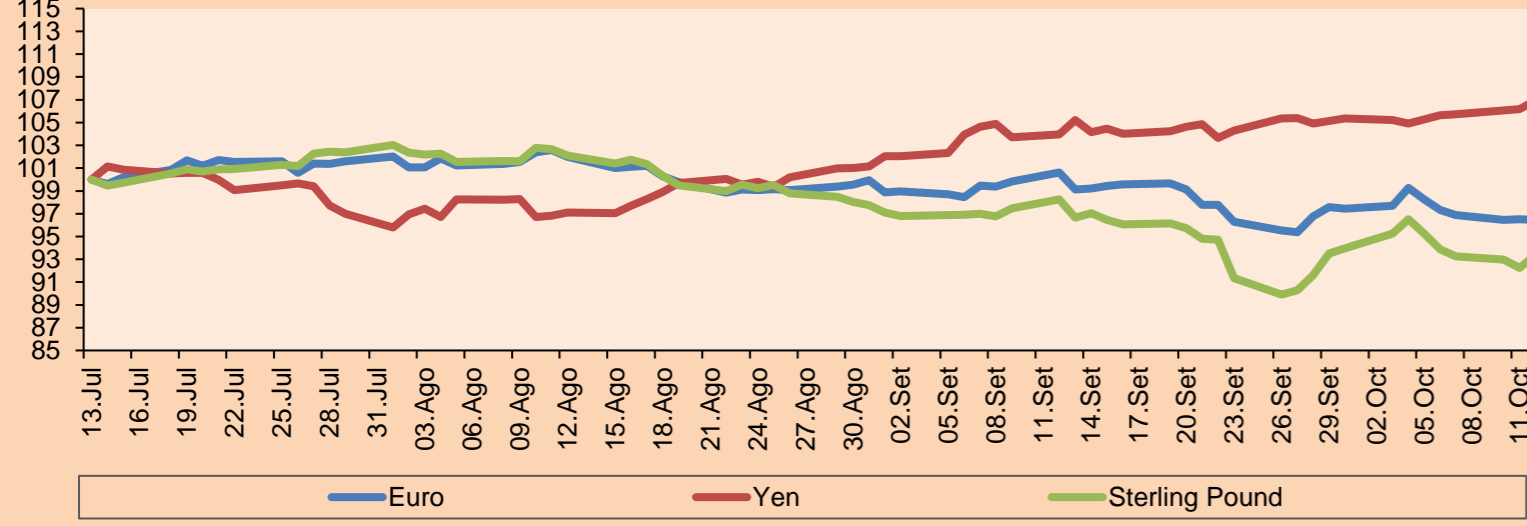


Source: Bloomberg

Currency	Price	1 D*	5 D*	1 M*	YTD*
▼ Euro	0.9703	-0.05%	-1.83%	-4.14%	-14.66%
▲ Yen	146.9100	0.72%	1.57%	2.85%	27.66%
▲ Sterling Pound	1.1100	1.20%	-2.00%	-4.99%	-17.97%
▲ Yuan	7.1748	0.09%	0.83%	3.58%	12.88%
- Hong Kong Dollar	7.8500	0.00%	0.00%	0.02%	0.68%
- Brazilian Real	5.3022	0.00%	2.05%	4.13%	-4.91%
▲ Argentine Peso	151.0146	0.21%	1.42%	6.14%	46.99%

*Legend: Variation 1D: 1 Day; 5D: 5 Days; 1M: 1 Month; YTD: Var.% 12/31/21 to date

Foreign Exchange Indices (3 months)

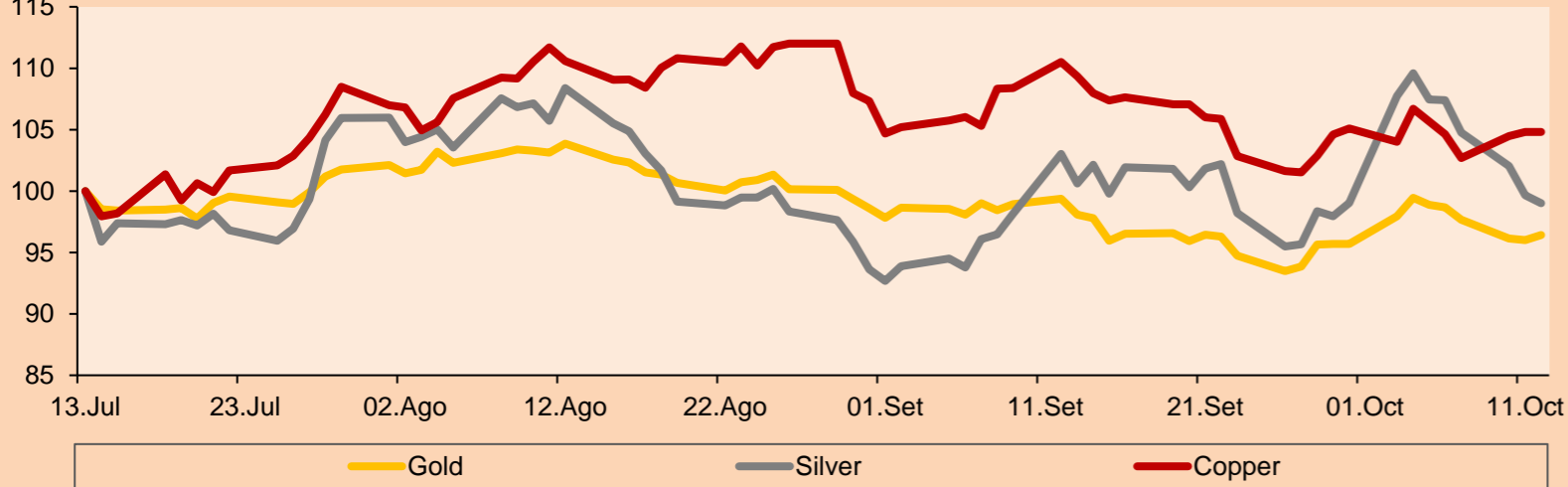


Base: 13/07/22=100
Source: Bloomberg

Commodities	Close	1 D*	5 D*	1 M*	YTD*
▲ Oro (US\$ Oz. T) (LME)	1,673.19	0.41%	-2.51%	-2.98%	-8.53%
▼ Plata (US\$ Oz. T) (LME)	19.02	-0.67%	-7.86%	-3.91%	-18.39%
- Cobre (US\$ TM) (LME)	7,661.25	0.00%	-0.83%	-5.18%	-21.35%
- Zinc (US\$ TM) (LME)	2,945.75	0.00%	-4.44%	-8.22%	-17.95%
▼ Petróleo WTI (US\$ Barril) (NYM)	87.27	-2.33%	-0.56%	-0.16%	24.00%
- Estaño (US\$ TM) (LME)	20,325.00	0.00%	-0.22%	-5.86%	-48.38%
- Plomo (US\$ TM) (LME)	2,057.49	0.00%	-0.86%	5.83%	-11.99%
▼ Azúcar #11 (US\$ Libra) (NYB-ICE)	18.68	-0.32%	4.07%	4.07%	1.36%
▼ Cacao (US\$ TM) (NYB-ICE)	2,318.00	-1.24%	-3.09%	-2.85%	-9.45%
▼ Café Arábica (US\$ TM) (NYB-ICE)	209.75	-3.72%	-6.63%	-6.67%	-6.00%

*Leyenda: Variación 1D: 1 Día; 5D: 5 Días; 1M: 1 Mes; YTD: Var.% 31/12/21 a la fecha

Principal Metals Index (3 months)



Base: 13/07/22=100
Source: Bloomberg

Equity

Germany (Stocks from DAX Index)

Largest gains	Curr.	Price	▲%	Exchange	Largest losses	Curr.	Price	▼%	Exchange
1COV GY	EUR	32.6	1.56	Xetra	ADS GY	EUR	111.88	-2.78	Xetra
BAS GY	EUR	42.135	1.62	Xetra	FME GY	EUR	26.55	-2.46	Xetra
CON GY	EUR	46.46	-2.97	Xetra	EOAN GY	EUR	7.414	-2.52	Xetra
DB1 GY	EUR	162.85	-1.90	Xetra	MRK GY	EUR	163.65	-0.97	Xetra

Europe (Stocks from STOXX EUROPE 600)

Largest gains	Curr.	Price	▲%	Exchange	Largest losses	Curr.	Price	▼%	Exchange
NIBEB SS	SEK	94.02	-1.55	Stockholm	STORB SS	SEK	7.1	-2.07	Stockholm
AKRBP NO	NOK	306.1	-1.39	Oslo	AUTO NO	NOK	15.105	5.63	Oslo
BESI NA	EUR	42.42	0.00	EN Amsterdam	ZAL GY	EUR	21.28	-1.57	Xetra
NETC DC	DKK	235.2	-0.17	Copenhagen	INDT SS	SEK	171.3	-0.98	Stockholm

Global Overview:

United States:

The U.S. market closed with negative yields, where the release of the Fed's September meeting minutes heightened concerns that policymakers will continue to tighten monetary policy. The DOW JONES index closed in negative territory as the September producer price index, a gauge of wholesale prices for final demand, came in higher than expected. These data have exacerbated fears that, in order to curb inflation, the Fed will continue its aggressive rate hikes, which could push the US economy into recession. The S&P500 index ended with a negative performance, where the Fed minutes showed that Fed officials are concerned about "unacceptably high" inflation, which "has yet to respond appreciably to policy tightening." Finally, the NASDAQ index closed with negative performance, where the monthly producer price inflation rate rose 0.4% in September, above expectations, and the monthly core PPI also rose 0.4% in September. However, the 12-month slowed to 8.5% and the core was unchanged at 5.6%. Thus, DOW JONES -0.10%; S&P 500 -0.33%; NASDAQ -0.09% ended the day with negative results.

Europe:

The main European indices ended the session with negative returns. The pan-European STOXX 600 index closed lower, due to the sentiment of a recession after macroeconomic figures showed a contraction over the past month. In addition, Gilts yields have lost -52.3% since December 2021 as the minister decides to extend investments on buying more bonds. The U.K. market, reflected in the FTSE 100, underperformed for the sixth consecutive session, due to losses occurring within the financials and non-core goods sector. On the corporate front, JD Sports Fashion plunged nearly 10%, the biggest fall in the FTSE 100, on news that its CFO will step down next year. Similarly, the German market, reflected in the DAX index closed in negative territory due to the loss suffered by the retail market and the banking sector. Philips was the worst hit (-12%), while Credit Suisse fell by more than 4% after it became known that it is under investigation for its movements with its US clients to hide assets from the authorities. The French market lost this session on concerns about the recession, refinery strikes and geopolitical tensions ahead of the minutes of the latest FOMC meeting. In addition, refinery workers have been protesting for three weeks, even leading to the closure of six of the country's seven refineries, which is a negative effect on the energy crisis. Thus, FTSE 100 -0.86%; CAC 40 -0.25%; DAX -0.39%; STOXX 600 -0.53% ended at negative levels.

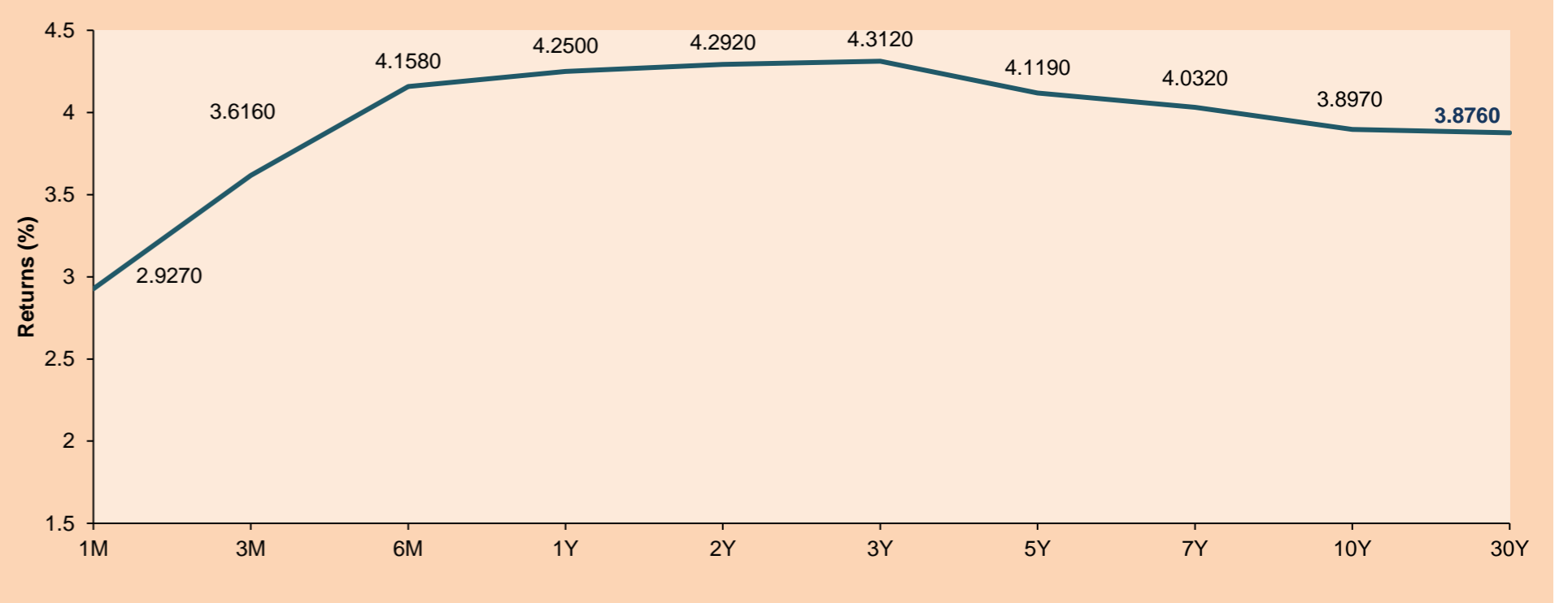
Asia:

Major Asian indices closed with mixed performances. The Chinese market closed in negative territory, Chinese stocks rebounded sharply on Wednesday after data showed the country's loan growth beat expectations. The Hang Seng index closed in negative terms rounding 11-year lows amid concerns over China's zero COVID policy and inflation and recession concerns overseas. The South Korean market posted positive returns this session led by chipmakers as investors expected a slowdown in monetary tightening after the central bank unveiled a more dovish tone. The Korean won jumped, while benchmark bond yields fell. The Japanese market closed lower with Japanese stocks closed flat after a choppy trading session on Wednesday, with declining technology companies offsetting gains in travel-related companies in a market that lacked direction ahead of key U.S. inflation data this week. The Australian market ended higher, with weakness in commodity prices likely to bog down mining and energy stocks, but trading is expected to remain choppy ahead of crucial U.S. inflation data. Thus, NIKKEI -0.02%; HANG SENG -0.78%; CSI 300 +1.52%; S&P/ASX 200 +0.04%; KOSPI +0.47%, SHANGHAI COMPOSITE +1.53% ended with mixed performances.

ETFs

	Curr.	Close	1D	5D	30 D	YTD	Exchange
SPDR S&P 500 ETF TRUST	USD	356.56	-0.33%	-5.44%	-13.24%	-24.93%	NYSE Arca
ISHARES MSCI EMERGING MARKET	USD	34.63	0.12%	-5.46%	-12.51%	-29.11%	NYSE Arca
ISHARES IBOXX HIGH YLD CORP	USD	71.58	0.17%	-2.25%	-5.87%	-17.73%	NYSE Arca
FINANCIAL SELECT SECTOR SPDR	USD	30.29	-0.23%	-5.61%	-12.56%	-22.43%	NYSE Arca
VANECK GOLD MINERS ETF	USD	24.02	0.88%	-5.32%	-5.62%	-25.01%	NYSE Arca
ISHARES RUSSELL 2000 ETF	USD	167.26	-0.27%	-4.26%	-11.82%	-24.81%	NYSE Arca
SPDR GOLD SHARES	USD	155.99	0.53%	-2.39%	-2.89%	-8.76%	NYSE Arca
ISHARES 20+ YEAR TREASURY BO	USD	100.35	0.49%	-2.15%	-6.58%	-32.28%	NASDAQ GM
INVESCO QQQ TRUST SERIES 1	USD	262.66	-0.03%	-6.85%	-15.47%	-33.98%	NASDAQ GM
ISHARES BIOTECHNOLOGY ETF	USD	119.03	0.73%	-3.13%	-7.46%	-22.01%	NASDAQ GM
ENERGY SELECT SECTOR SPDR	USD	80.12	0.81%	-1.09%	-2.39%	44.36%	NYSE Arca
PROSHARES ULTRA VIX ST FUTUR	USD	13.25	-1.78%	15.72%	42.93%	6.60%	Cboe BZX
UNITED STATES OIL FUND LP	USD	70.93	-1.14%	-1.40%	-1.99%	30.48%	NYSE Arca
ISHARES MSCI BRAZIL ETF	USD	31.37	-0.92%	-4.42%	-2.46%	11.76%	NYSE Arca
SPDR S&P OIL & GAS EXP & PR	USD	139.71	1.13%	-1.81%	-3.78%	45.73%	NYSE Arca
UTILITIES SELECT SECTOR SPDR	USD	61.52	-3.33%	-8.63%	-21.25%	-14.05%	NYSE Arca
ISHARES US REAL ESTATE ETF	USD	77.72	-1.13%	-6.20%	-20.82%	-33.08%	NYSE Arca
SPDR S&P BIOTECH ETF	USD	78.70	0.55%	-4.80%	-11.25%	-29.71%	NYSE Arca
ISHARES IBOXX INVESTMENT GRA	USD	101.17	-0.12%	-2.43%	-6.45%	-23.66%	NYSE Arca
ISHARES JP MORGAN USD EMERGI	USD	78.62	-0.35%	-2.43%	-8.69%	-27.91%	NASDAQ GM
REAL ESTATE SELECT SECT SPDR	USD	34.00	-1.33%	-7.03%	-21.66%	-34.38%	NYSE Arca
ISHARES CHINA LARGE-CAP ETF	USD	24.71	-0.64%	-9.22%	-16.94%	-32.45%	NYSE Arca
CONSUMER STAPLES SPDR	USD	67.65	0.53%	-1.26%	-8.91%	-12.27%	NYSE Arca
VANECK JUNIOR GOLD MINERS	USD	29.70	1.82%	-5.32%	-6.52%	-29.17%	NYSE Arca
SPDR BLOOMBERG HIGH YIELD BO	USD	87.89	0.19%	-2.19%	-6.16%	-19.05%	NYSE Arca
VANGUARD REAL ESTATE ETF	USD	76.68	-1.05%	-6.05%	-20.74%	-33.90%	NYSE Arca
GRAYSCALE BITCOIN TRUST BTC	USD	11.21	0.45%	-6.51%	-20.78%	-67.27%	OTC US

USA Treasury Bonds Yield Curve (%)



Source: Bloomberg

LIMA

Stocks

	Ticker	Currency	Price	1D*	5D*	30D*	YTD*	Frequency	Volume (US\$)	Beta	Dividend Yield (%)	Price Earning	Market Cap. (M US\$)	Economic Sector*	Index Weight
▲	ALICORC1 PE**	S/.	5.90	0.58%	-0.89%	9.31%	-3.82%	100.00%	98,243	0.85	4.24	9.97	1,263.62	Industrial	3.53%
-	BACKUSI1 PE**	S/.	22.00	0.00%	0.00%	0.69%	7.32%	70.00%	39	0.78	0.00	6.84	7,312.31	Mining	1.02%
▲	BAP PE**	US\$	130.00	1.59%	-0.31%	-1.14%	5.03%	100.00%	54,748	1.23	3.08	-	10,337.60	Industrial	0.82%
▲	BVN PE**	US\$	6.59	0.92%	-6.92%	4.44%	-9.73%	100.00%	59,202	1.55	1.06	-	1,816.43	Diverse	5.82%
-	CASAGRC1 PE**	S/.	8.73	0.00%	2.71%	0.23%	-4.07%	100.00%	12,888	1.25	61.87	5.79	184.76	Mining	5.88%
-	BBVAC1 PE**	S/.	1.51	0.00%	0.00%	2.03%	-9.04%	95.00%	6,666	0.73	6.99	5.62	2,800.64	Agricultural	1.31%
-	CORARE1 PE**	S/.	1.34	0.00%	-1.47%	-5.63%	-22.09%	80.00%	298	0.88	0.00	2.71	491.15	Finance	2.85%
▲	CPACASC1 PE**	S/.	4.17	1.71%	9.45%	5.30%	-15.76%	85.00%	16,407	0.83	0.00	11.58	476.46	Industrial	1.72%
▼	CVERDEC1 PE**	US\$	28.51	-1.69%	-1.72%	5.59%	-23.42%	95.00%	74,406	0.92	6.51	8.44	9,980.10	Industrial	2.38%
-	ENGEPEC1 PE**	S/.	2.65	0.00%	0.00%	0.00%	-6.69%	85.00%	1,413	0.81	0.00	6.40	1,163.71	Mining	5.25%
-	ENDISPC1**	S/.	3.81	0.00%	0.00%	-2.81%	-4.75%	45.00%	37	0.82	0.00	6.25	611.26	Public Services	1.44%
-	FERREYC1 PE**	S/.	2.25	0.00%	-0.44%	-3.02%	9.76%	100.00%	240,092	0.93	11.55	4.54	534.81	Public Services	0.98%
-	AENZAC1 PE**	S/.	0.70	0.00%	0.00%	-14.63%	-48.91%	65.00%	1,523	1.06	0.00	-	210.51	Diverse	4.90%
-	IFS PE**	US\$	20.40	0.00%	-4.27%	-6.89%	-24.02%	95.00%	67	0.83	0.00	6.42	2,354.53	Diverse	4.05%
-	INRETC1 PE**	US\$	33.05	0.00%	-3.08%	8.01%	-5.44%	95.00%	3,305	0.85	4.15	21.65	3,594.08	Diverse	7.22%
▼	LUSURC1 PE**	S/.	14.00	-0.71%	0.00%	-8.91%	-1.69%	65.00%	5,375	0.00	5.46	11.47	1,712.81	Diverse	5.28%
▼	MINSURI1 PE**	S/.	3.65	-1.35%	-3.95%	0.83%	-7.59%	80.00%	13,216	1.09	19.94	1.24	2,643.83	Public Services	1.81%
-	PML PE**	US\$	0.09	0.00%	0.00%	0.00%	-25.00%	30.00%	2,024		0.00	-	22.47	Mining	3.09%
▼	SCCO PE**	US\$	46.00	-4.17%	-5.78%	-6.52%	-25.54%	100.00%	12,302	1.08	8.70	11.25	35,562.25	Mining	2.12%
-	SIDERC1 PE**	S/.	1.51	0.00%	2.72%	-5.03%	-5.63%	60.00%	795	0.82	0.00	3.65	265.56	Industrial	2.14%
-	UNACEMC1 PE**	S/.	1.73	0.00%	-1.14%	6.79%	-27.92%	75.00%	1,083	1.03	0.00	-	790.25	Industrial	1.43%
-	VOLCABC1 PE**	S/.	0.52	0.00%	-5.45%	-16.13%	-13.33%	100.00%	39,164	1.43	0.00	10.44	532.59	Mining	2.93%
▲	BROCALC1 PE**	S/.	4.99	0.20%	1.63%	1.63%	-4.04%	35.00%	15,160	0.00	0.53	35.20	202.92	Industrial	3.00%
-	CORAREC1 PE**	US\$	1.92	0.00%	0.52%	0.00%	1.05%	25.00%	76,800	0.00	0.00	3.88	1,954.87	Finance	3.09%
-	ENGIEC1 PE**	S/.	5.02	0.00%	-3.46%	-7.04%	-14.33%	25.00%	5	#N/A N/A	0.00	15.38	758.47	Mining	2.12%
-	GBVLAC1 PE**	S/.	2.39	0.00%	0.00%	-4.78%	-12.13%	30.00%	5,985	0.00	0.00	-	109.34	Diversas	2.12%
-														Diversas	2.14%

Quantity of shares: 26
Source: Bloomberg, Economática
* Bloomberg Industry Classification System
** PER is used in the stock market and original currency of the instrument

Up 5
Down 4
Hold 17

*Legend: Variation 1D: 1 Day; 5D: 5 Days; 1M: 1 Month; YTD: Var.% 12/31/21 to date

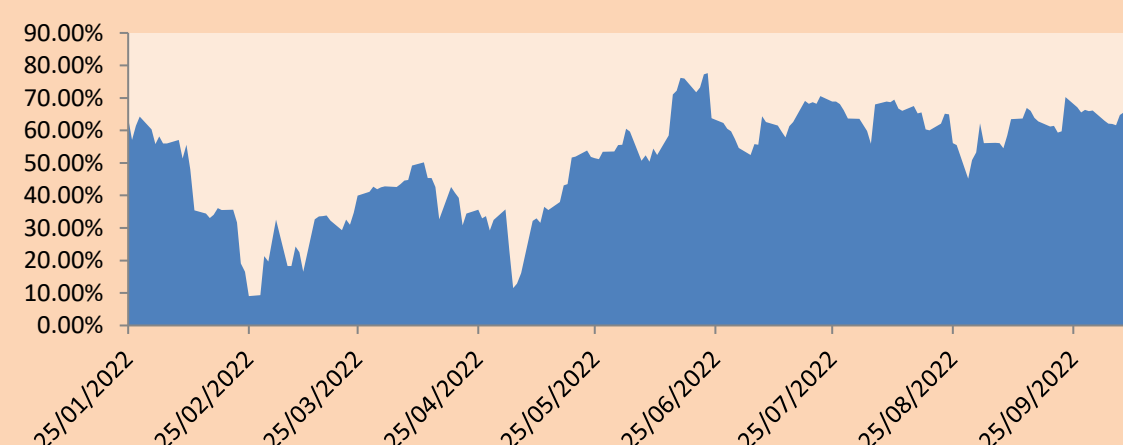
Sectorial Indices

		Close	1D*	5D*	30D*	YTD*	Beta
▼	S&P/BVLMining	331.53	-2.27%	-5.16%	-0.65%	-19.45%	1.17
▲	S&P/BVLConsumer	1,179.25	0.39%	-0.53%	4.25%	2.72%	0.63
▲	S&P/BVLIndustrials	235.36	0.25%	0.91%	2.01%	-8.80%	0.76
▲	S&P/BVLFinancials	948.68	1.67%	-0.35%	1.52%	4.70%	1.20
▲	S&P/BVLConstruction	227.02	0.38%	1.60%	1.61%	-19.89%	0.71
-	S&P/BVLPublicSvcs	596.32	0.00%	-1.75%	-4.13%	8.72%	0.13
-	S&P/BVLElectricUtil	582.15	0.00%	-1.76%	-4.13%	8.72%	0.13

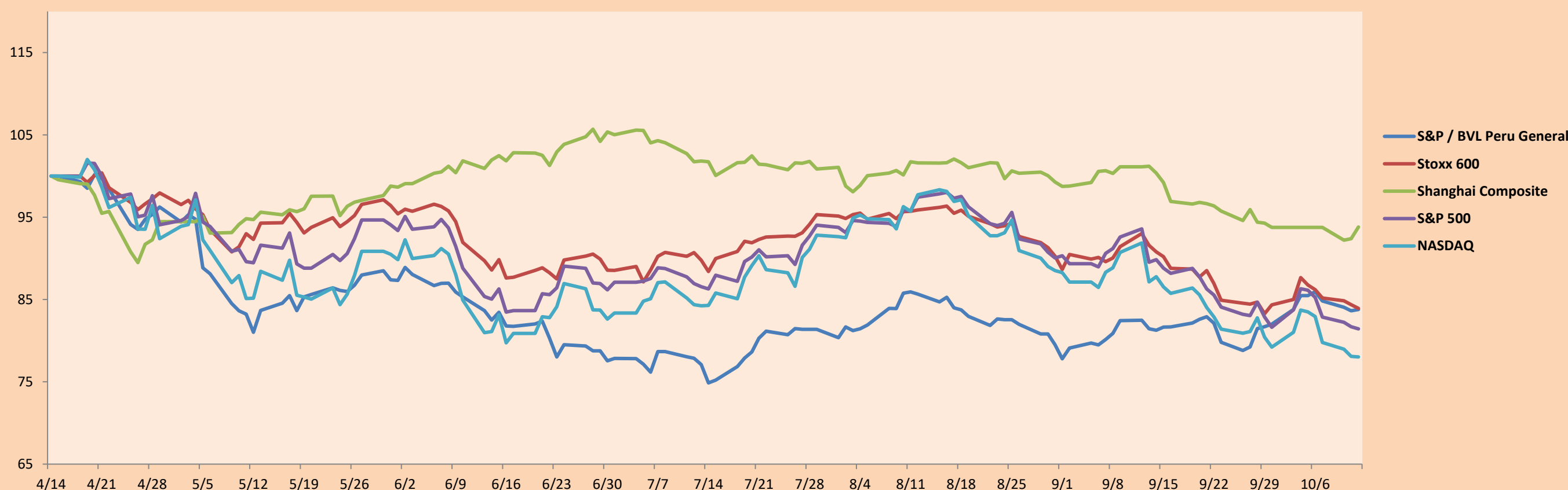
S&P/BVLConstructionTRPEN

*Legend: Variation 1D: 1 Day; 5D: 5 Days; 1M: 1 Month; YTD: Var.% 12/31/21 to date

Correlation Graph of Returns of Mining Index against Metallic Index of London (3 months)



Indices (6 months)



Base: 14/04/22=100
Source: Bloomberg

Capital Market Laboratory Coordinator: MS Javier Penny Pestana
Collaboration: Mariafe Urrutia, Fedele Calle, Miguel Solimano y Maciell Esquerre
email: pulsobursatil@ulima.edu.pe
facebook: www.facebook.com/pulsobursatil.ul

SOVEREIGN RATING

RISK RATINGS

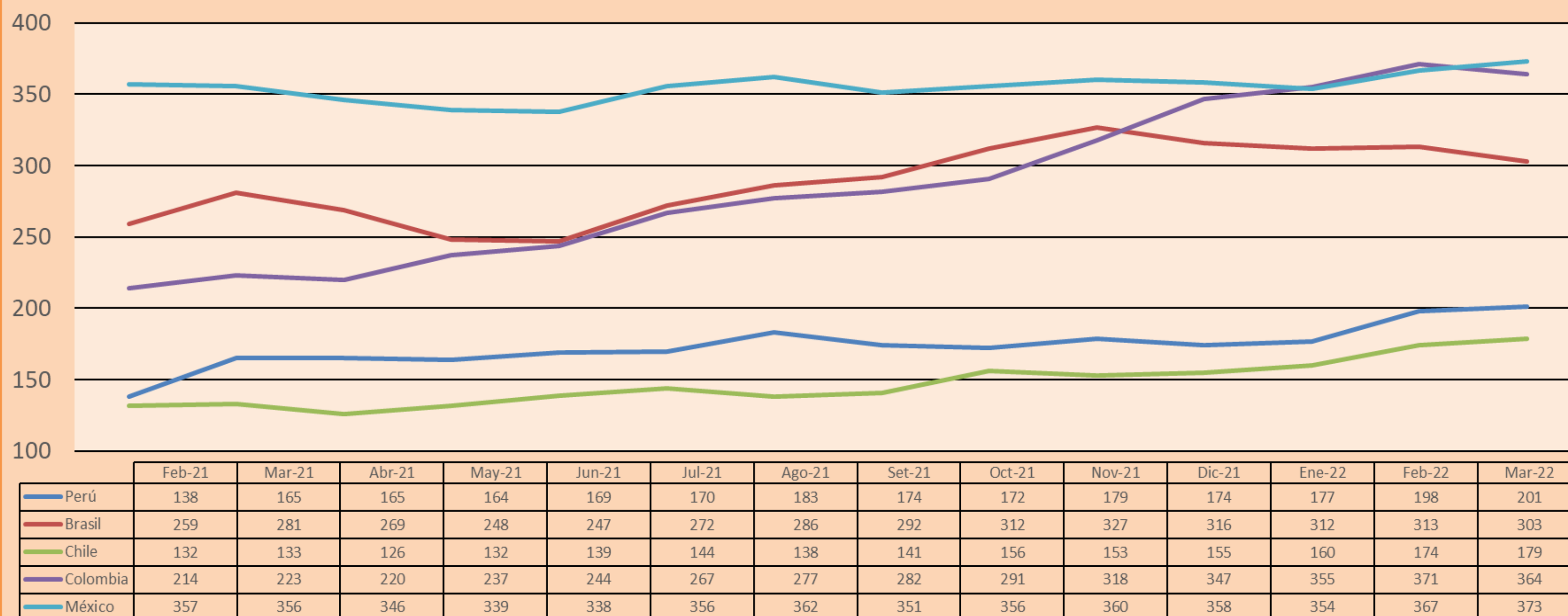
Moody's	S&P	Fitch	
Aaa	AAA	AAA	Prime
Aa1	AA+	AA+	High credit quality
Aa2	AA	AA	
Aa3	AA-	AA-	
A1	A+	A+	Medium-high grade, with low credit risk
A2	A	A	
A3	A-	A-	
Baa1	BBB+	BBB+	Moderate Credit Risk
Baa2	BBB	BBB	
Baa3	BBB-	BBB-	
Ba1	BB+	BB+	It has speculative elements and it is subject to substantial credit risk
Ba2	BB	BB	
Ba3	BB-	BB-	
B1	B+	B+	It is considered speculative and it has high credit risk
B2	B	B	
B3	B-	B-	
Caa1	CCC+	CCC	
Caa2	CCC		
Caa3	CCC-		
Ca	CC		
	C	DDD	Bad credit conditions and it is subject to high credit risk
	D		
		DD	Very close to default or in default
		D	

Source: Bloomberg

Latin America Credit Rating			
Clasificadora de riesgo			
Country	Moody's	Fitch	S&P
Peru	Baa1	BBB	BBB
México	Ba2	BB-	BB-
Venezuela	C	WD	NR
Brazil	Ba2	BB-	BB-
Colombia	Baa2	BB+	BB+
Chile	A2	A-	A
Argentine	Ca	WD	CCC+
Panama	Baa2	BBB-	BBB

Source: Bloomberg

LATAM Country Risk(bps)



Source: BCRP

Capital Market Laboratory Coordinator: MS Javier Penny Pestana
Collaboration: Mariafe Urrutia, Fedele Calle, Miguel Solimano y Maciell Esquerre
email: pulsobursatil@ulima.edu.pe
facebook: www.facebook.com/pulsobursatil.ul