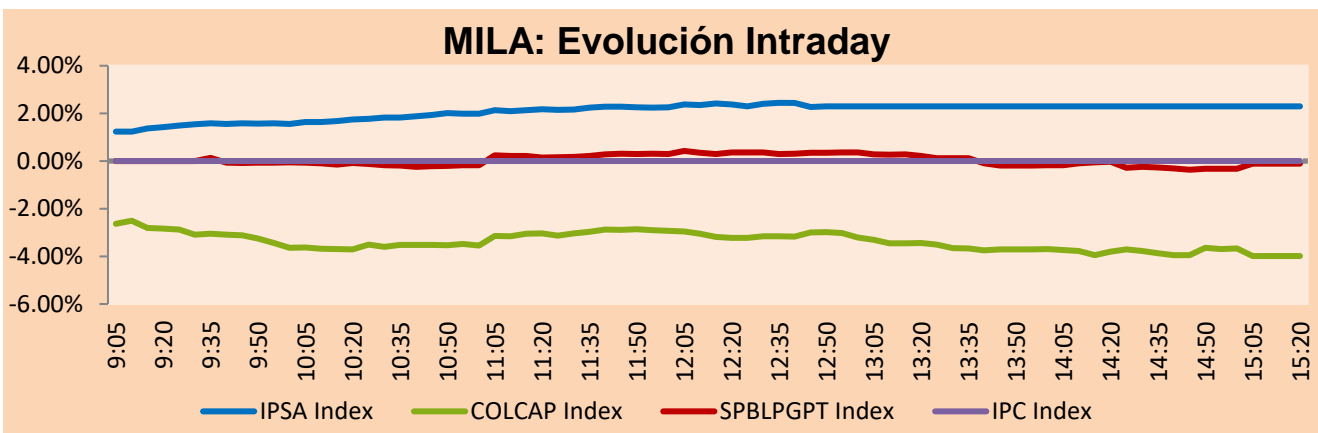


MILA

Lima, november 21, 2022

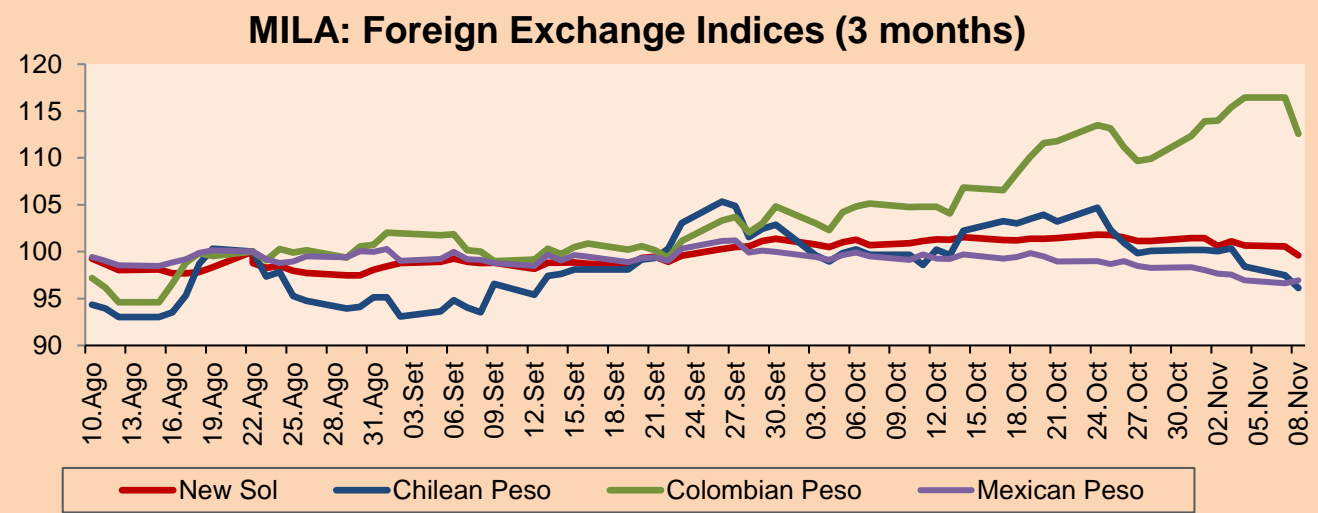
Main Indexes	Close	1 D	5 D	1 M	YTD	Cap. Burs. (US\$ bill)
▲ IPSA (Chile)	5,312.69	2.23%	0.19%	3.21%	23.31%	96.02
▲ IGPA (Chile)	28,814.97	3.41%	-0.13%	2.99%	33.61%	110.60
▲ COLSC (Colombia)	919.30	0.90%	-0.42%	-0.55%	-5.53%	3.19
▼ COLCAP (Colombia)	1,231.54	-3.99%	-2.76%	-0.01%	-12.72%	55.29
▼ S&P/BVL (Perú)*	21,874.40	-0.10%	-2.27%	6.81%	3.61%	93.10
▼ S&P/BVL SEL (Perú)	571.26	-0.57%	-3.29%	5.49%	1.36%	78.96
▼ S&P/BVL LIMA 25	30,211.36	-0.88%	-1.55%	4.16%	-0.21%	92.59
▲ IPC (México)	51,569.72	0.41%	-0.75%	9.44%	-3.20%	331.80
▼ S&P MILA 40	434.95	-1.20%	-5.13%	5.74%	-2.23%	6,484.43

*Legend: Variation 1D: 1 day; 5D: 5 days; 1M: 1 Month; YTD: Var% 12/31/21 to date

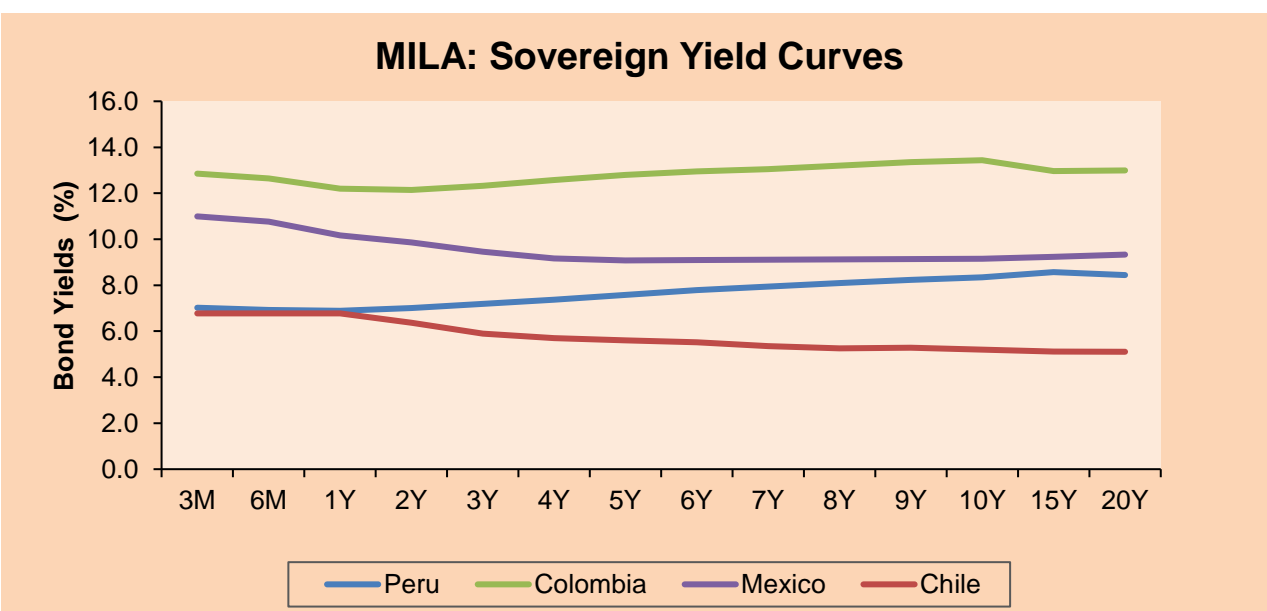


Currency	Price	1D*	5D*	30 D*	YTD*
▲ Sol (PEN)	3,841.8	0.33%	-0.19%	-3.62%	-3.93%
▲ Chilean Peso (CLP)	942.10	0.09%	5.61%	-3.07%	10.58%
▼ Colombian Peso (COP)	4,945.63	-0.86%	2.92%	0.61%	21.21%
▲ Mexican Peso (MXN)	19.54	0.52%	1.00%	-1.95%	-4.80%

*Legend: Variation 1D: 1 day; 5D: 5 days; 1M: 1 Month; YTD: Var% 12/31/21 to date



Fixed Income	Currency	Price	Bid Yield (%)	Ask Yield (%)	Duration
PERU 7.35 07/21/25	USD	105.389	5.26	5.05	2.35
PERU 4.125 08/25/27	USD	96.472	5.03	4.90	4.19
PERU 8.75 11/21/33	USD	122.338	6.01	5.90	7.41
PERU 6.55 03/14/37	USD	105.38	6.03	5.94	8.81
PERU 5.625 11/18/2050	USD	97.37	5.84	5.79	13.71
CHILE 2.25 10/30/22	USD	99.938	54.01	-27.10	0.01
CHILE 3.125 01/21/26	USD	94.837	4.96	4.85	2.92
CHILE 3.625 10/30/42	USD	75.614	5.75	5.62	13.11
COLOM 11.85 03/09/28	USD	118.242	7.66	7.53	3.94
COLOM 10.375 01/28/33	USD	108.437	9.27	8.90	6.16
COLOM 7.375 09/18/37	USD	91.213	8.49	8.36	8.48
COLOM 6.125 01/18/41	USD	77.483	8.65	8.54	9.53
MEX 4 10/02/23	USD	77.483	8.65	8.54	9.53
MEX5.55 01/45	USD	91.037	6.34	6.28	11.94



Equity

Largest gains	Exchange	Currency	Price	▲%	Largest losses	Exchange	Currency	Price	▼%
SOQUIMICH-B	Chile	CLP	95870.00	5.95	GRUPO F BANORT-O	Mexico	MXN	156.2	-2.56
CMPC	Chile	CLP	1639.90	4.53	BECLE SAB DE CV	Mexico	MXN	41.11	-2.40
BUENAVENTURA-ADR	Peru	USD	7.73	4.46	COLBUN SA	Chile	CLP	91.8	-1.82
EMPRESAS COPEC	Chile	CLP	6889.90	3.45	ALFA SAB-A	Mexico	MXN	13.71	-1.72
MEGACABLE-CPO	Mexico	MXN	45.08	3.42	INRETAIL PERU CO	Peru	USD	34	-1.59

Per Turnover	Exchange	Amount (US\$)	Per Volume	Exchange	Volume
AMERICA MOVIL-L	Mexico	78,629,750	ITAU CORPBANCA	Chile	1,047,244,022
GRUPO MEXICO-B	Mexico	73,569,603	BANCO DE CHILE	Chile	304,370,743
WALMART DE MEXIC	Mexico	57,520,472	BANCO SANTANDER	Chile	179,927,141
SOQUIMICH-B	Chile	49,055,462	ENEL CHILE SA	Chile	102,642,295
GRUPO F BANORT-O	Mexico	45,358,717	AMERICA MOVIL-L	Mexico	78,191,840

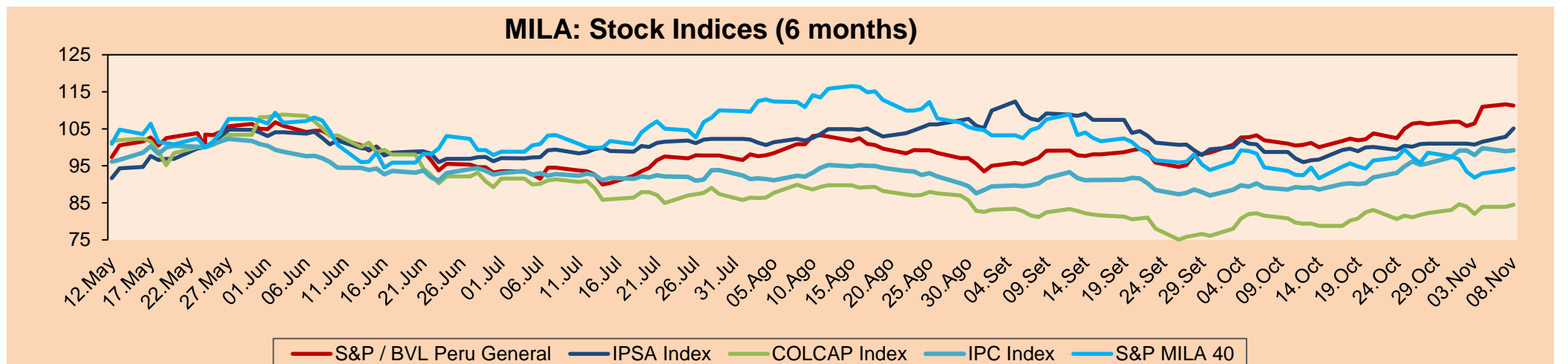
MILA

Peru: The BVL General index ended today's session with a negative result of -0.33%. The index maintains a positive annual cumulative trend of +3.38% in local currency and a positive cumulative trend of +7.61% in dollar-adjusted currency. The S&P/BVL Peru SEL varied by -1.04% while the S&P/BVL LIMA 25 varied by -1.38%. The spot PEN reached S/3.8418. Headline: Peruvian stock market on the verge of losing its "emerging market" category.

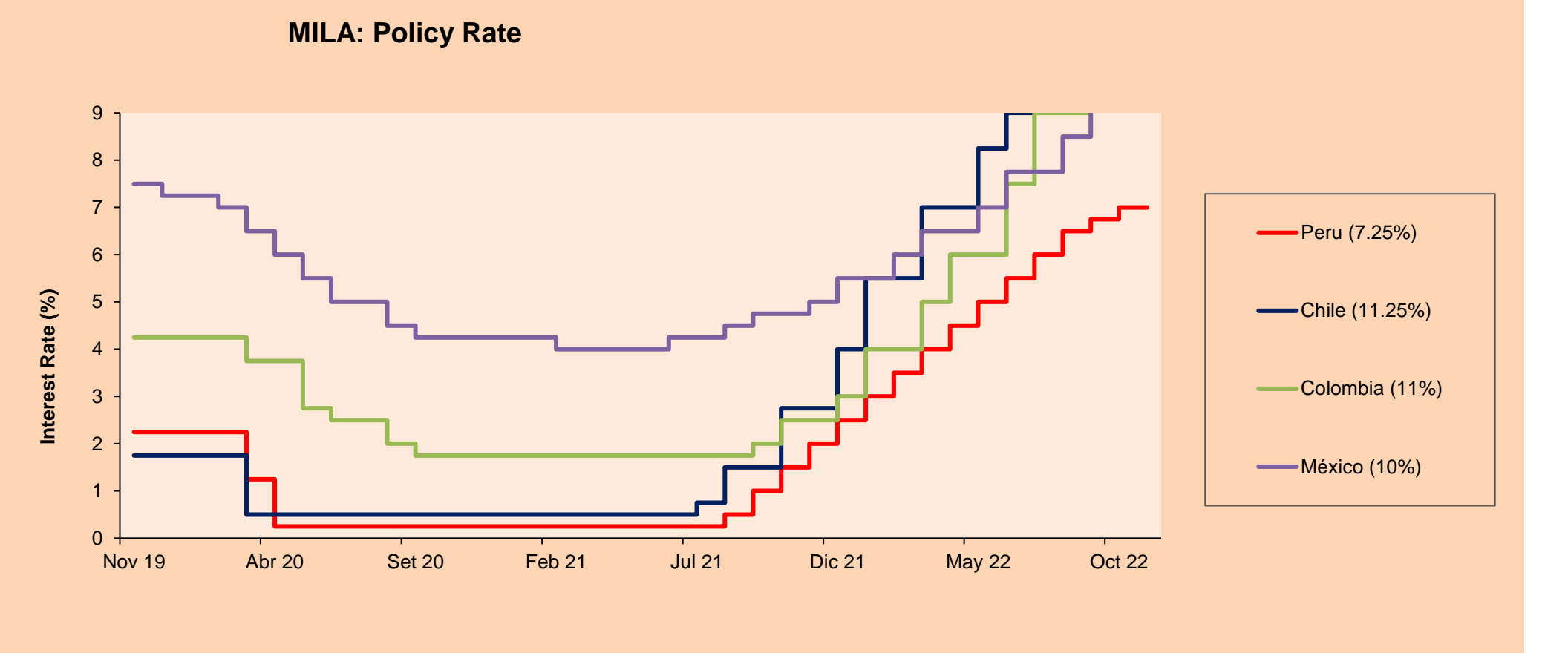
Chile: The IPSA index ended the day with a positive return of +2.22%. The most benefited sectors of the day were Materials (+6.50%) and Utilities (+3.99%). The best performing stocks were Sociedad Química y Minera de Chile SA (+9.80%) and Enel Americas SA (+7.45%). Headline: Public Investment: Report warns of fall in number of contracts and increase in costs.

Colombia: The COLCAP index ended the session with a negative return of -3.99%. The most damaged sectors of the day were Consumer Staples (-28.59%) and Energy (-4.14%). The worst performing stocks were Grupo Nutresa SA (-28.59%) and Grupo Argos SA (-4.48%). Headline: Nutresa shares fall 29.41% after the Stock Exchange declared the takeover bid void.

Mexico: The IPC index closed the day in positive territory +0.41%. The sectors that benefited the most during the day were Non-Basic Consumer Products (+1.55%) and Financials (+1.41%). The best performing stocks were Becle SAB de CV (+3.95%) and Sitios Latinoamerica SA de CV (+2.79%). Headline: Fitch maintains Mexico's credit rating at "BBB-" with a "stable" outlook.



ETFs	Curr.	Close	1D	5D	30 D	YTD	Exchange
▼ iShares MSCI All Peru Caped Index Fund	USD	28.37	-1.70%	-5.05%	10.26%	-4.22%	NYSE Arca
▲ iShares MSCI All Chile Caped Index Fund	USD	25.9	2.98%	-4.67%	6.54%	12.17%	Cboe BZX
Global X MSCI Colombia	USD						
▼ iShares MSCI Mexico Capped	USD	53.03	-0.60%	-1.03%	11.81%	4.80%	NYSE Arca
▼ iShares MSCI Emerging Markets	USD	37.55	-1.26%	-1.00%	6.46%	-23.13%	NYSE Arca
▼ Vanguard FTSE Emerging Markets	USD	38.61	-0.92%	-0.52%	5.06%	-21.94%	NYSE Arca
▼ iShares Core MSCI Emerging Markets	USD	46.22	-1.11%	-1.01%	6.35%	-22.79%	NYSE Arca
▼ iShares JP Morgan Emerging Markets Bonds	USD	52.77	-0.71%	-1.49%	2.77%	-16.00%	Cboe BZX
▼ Morgan Stanley Emerging Markets Domestic	USD	4.17	-0.48%	-1.65%	4.25%	-23.91%	New York

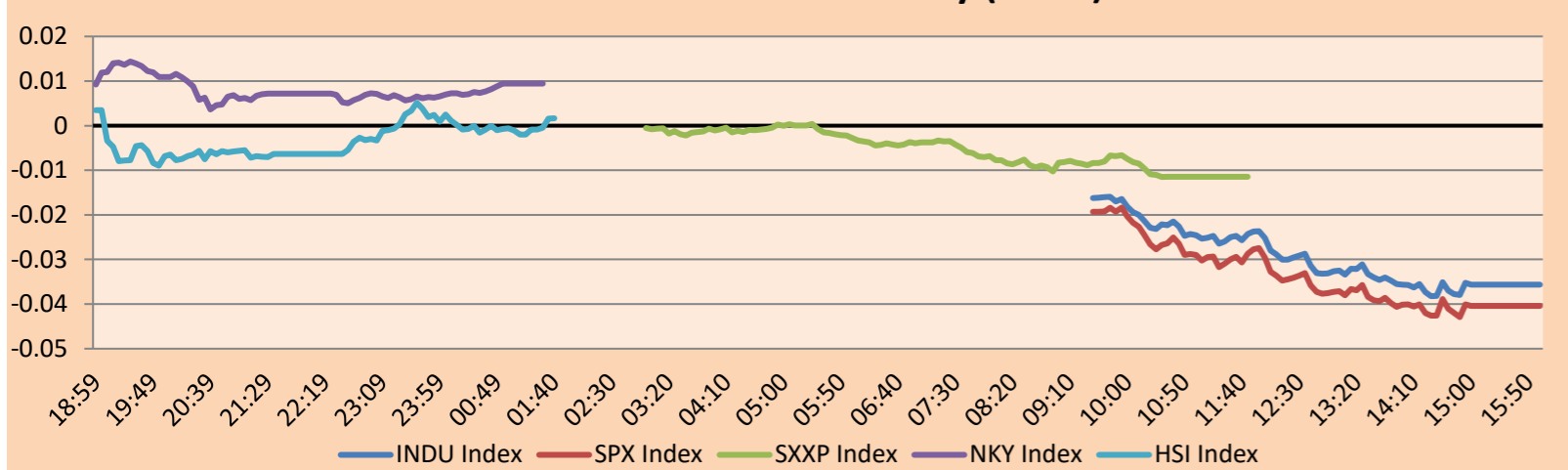


WORLD

Main Indices	Close	1 D*	5 D*	1 M*	YTD*	Market Cap. (US\$ Mill.)
▼ Dow Jones (USA)	33,700.28	-0.13%	0.49%	8.42%	-7.26%	10,055,497
▼ Standard & Poor's 500 (EEUU)	3,949.94	-0.39%	-0.18%	5.25%	-17.13%	34,630,650
▼ NASDAQ Composite (USA)	11,024.51	-1.09%	-1.53%	1.52%	-29.53%	18,895,221
▼ Stoxx EUROPE 600 (Europe)	433.06	-0.06%	0.05%	9.28%	-11.22%	11,709,896
▼ DAX (Germany)	14,379.93	-0.36%	0.47%	12.95%	-9.47%	1,474,140
▼ FTSE 100 (United Kingdom)	7,376.85	-0.12%	-0.11%	5.84%	-0.10%	1,710,450
▼ CAC 40 (France)	6,634.45	-0.15%	0.38%	9.93%	-7.25%	2,117,535
▲ IBEX 35 (Spain)	8,188.40	0.75%	0.27%	8.52%	-6.03%	530,487
▲ MSCI AC Asia Pacific Index	152.67	0.16%	0.52%	12.41%	-20.95%	20,359,076
▲ HANG SENG (Hong kong)	17,655.91	-1.87%	0.21%	8.91%	-24.54%	2,713,684
▲ SHANGHAI SE Comp. (China)	3,085.04	-0.39%	0.05%	1.52%	-15.24%	6,097,476
▲ NIKKEI 225 (Japan)	27,944.79	0.16%	-0.07%	3.92%	-2.94%	3,439,029
▼ S&P / ASX 200 (Australia)	7,139.25	-0.18%	-0.10%	6.93%	-4.10%	1,576,504
▼ KOSPI (South Korea)	2,419.50	-1.02%	-2.23%	9.33%	-18.74%	1,363,136

*Legend: Variation 1D: 1 Day; 5D: 5 Days; 1M: 1 Month; YTD: Var.% 12/31/21 to date

Mercado Evolución Intraday (var %)

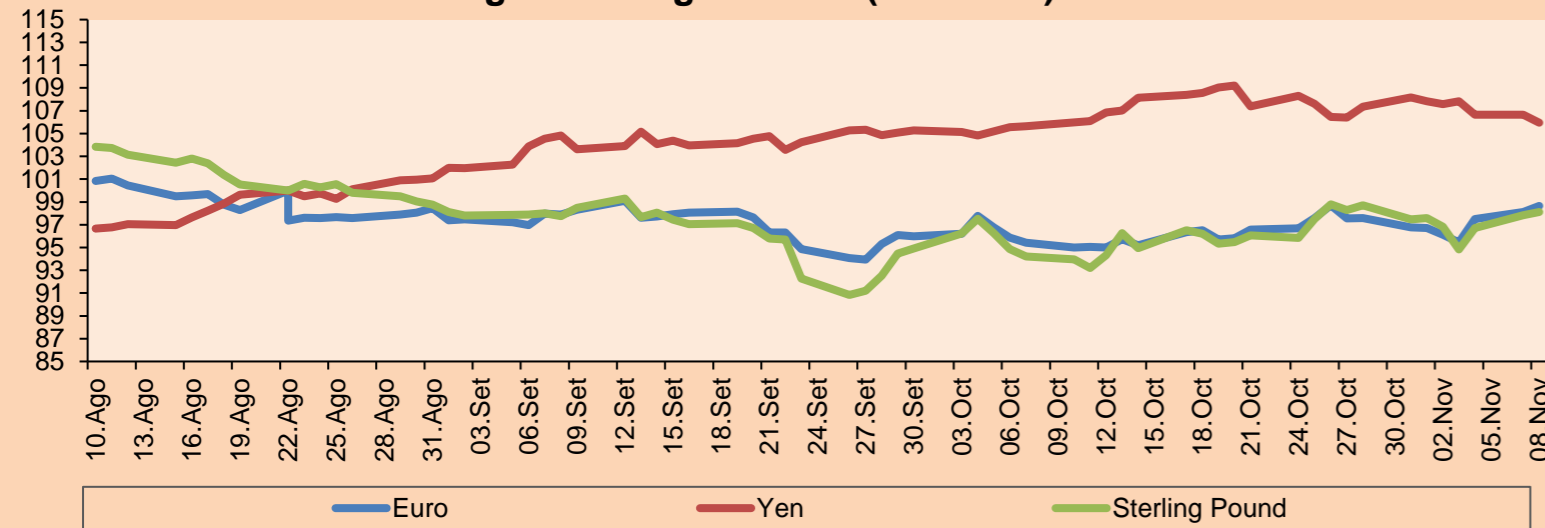


Source: Bloomberg

Currency	Price	1 D*	5 D*	1 M*	YTD*
▼ Euro	1.0238	-0.84%	-0.86%	3.81%	-9.96%
▲ Yen	142.1200	1.25%	1.59%	-3.75%	23.50%
▲ Sterling Pound	1.1820	-0.59%	0.54%	4.57%	-12.65%
▲ Yuan	7.1653	0.64%	1.36%	-0.90%	12.73%
▼ Hong Kong Dollar	7.8027	-0.25%	-0.43%	-0.60%	0.08%
▼ Brazilian Real	5.3090	-1.26%	-0.30%	2.83%	-4.78%
- Argentine Peso	163.1609	0.00%	0.86%	6.09%	58.82%

*Legend: Variation 1D: 1 Day; 5D: 5 Days; 1M: 1 Month; YTD: Var.% 12/31/21 to date

Foreign Exchange Indices (3 months)

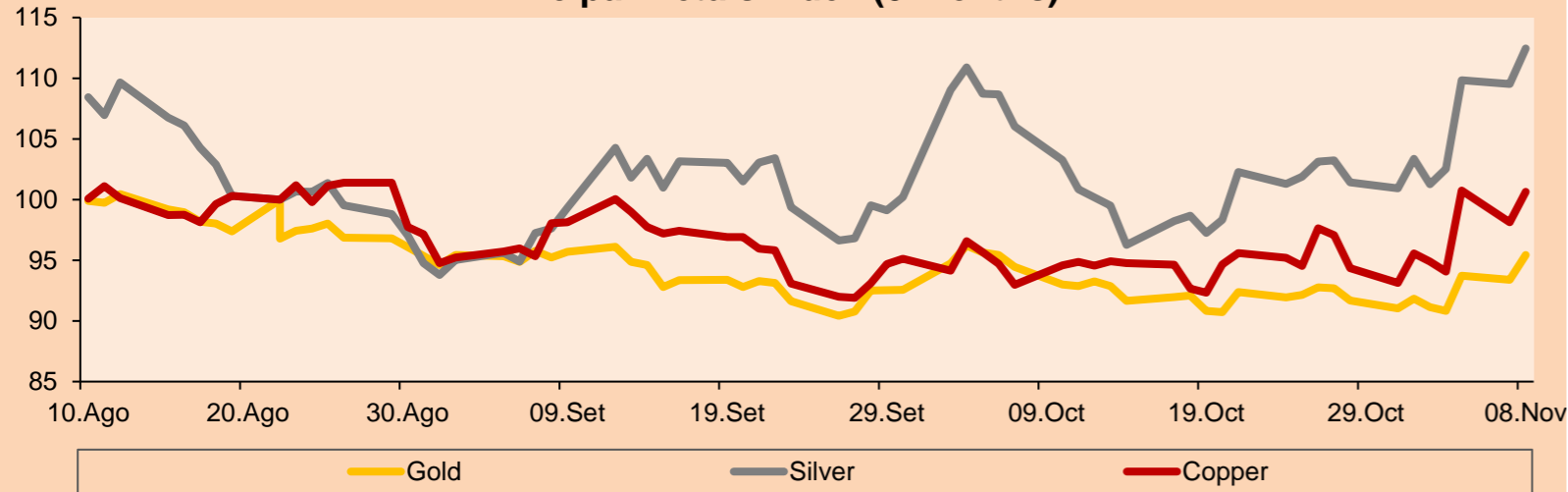


Base: 22/08/22=100
Source: Bloomberg

Commodities	Close	1 D*	5 D*	1 M*	YTD*
▼ Oro (US\$ Oz. T) (LME)	1,738.47	-0.70%	-1.86%	4.87%	-4.96%
▼ Plata (US\$ Oz. T) (LME)	20.85	-0.44%	-5.15%	7.36%	-10.55%
- Cobre (US\$ TM) (LME)	8,042.50	0.00%	-3.75%	4.19%	-17.43%
- Zinc (US\$ TM) (LME)	3,023.00	0.00%	-4.15%	1.44%	-15.79%
▼ Petróleo WTI (US\$ Barril) (NYM)	80.06	-0.06%	-5.99%	-4.63%	15.56%
- Estaño (US\$ TM) (LME)	22,809.00	0.00%	2.40%	23.72%	-42.07%
- Plomo (US\$ TM) (LME)	2,141.05	0.00%	-2.44%	12.01%	-8.41%
▼ Azúcar #11 (US\$ Libra) (NYB-ICE)	19.86	-0.95%	0.15%	8.05%	7.76%
▼ Cacao (US\$ TM) (NYB-ICE)	2,453.00	-0.12%	-1.80%	6.10%	-3.50%
▲ Café Arábica (US\$ TM) (NYB-ICE)	160.40	3.42%	-3.89%	-13.67%	-27.94%

*Leyenda: Variación 1D: 1 Día; 5D: 5 Días; 1M: 1 Mes; YTD: Var.% 31/12/21 a la fecha

Principal Metals Index (3 months)



Base: 22/08/22=100
Source: Bloomberg

Equity

Germany (Stocks from DAX Index)

Largest gains	Curr.	Price	▲ %	Exchange	Largest losses	Curr.	Price	▼ %	Exchange
ADS GY	EUR	124.3	-3.79	Xetra	PAH3 GY	EUR	58.2	-1.22	Xetra
ENR GY	EUR	14.725	0.34	Xetra	PUM GY	EUR	49.92	-2.95	Xetra
MRK GY	EUR	174.95	-0.71	Xetra	BMW GY	EUR	83.6	-0.65	Xetra
MUV2 GY	EUR	294	0.24	Xetra	MTX GY	EUR	194.45	0.59	Xetra

Europe (Stocks from STOXX EUROPE 600)

Largest gains	Curr.	Price	▲ %	Exchange	Largest losses	Curr.	Price	▼ %	Exchange
BESI NA	EUR	61.2	-1.19	EN Amsterdam	PSN LN	GBP	1293.5	-0.46	Londres
NOD NO	NOK	176.7	0.03	Oslo	BAYN GY	EUR	54.4	1.13	Xetra
IFX GY	EUR	31.505	-1.84	Xetra	HBR LN	GBP	299.5	-8.52	Londres
KINVB SS	SEK	155.75	-0.89	Stockholm	LDO IM	EUR	7.39	-0.32	Borsa Italiana

Global Overview:

United States:

The US market closed with negative yields. In a context where the yield on the 10-year U.S. Treasury bond stood at 3.8%, well below the 4.2% at the beginning of the month. The DOW JONES index closed with losses this session as investors were concerned about the COVID-19 news in China. The first 6 deaths from the virus in the last 6 months have been reported; in addition, the Chinese government introduced new restrictions following new outbreaks. The S&P 500 index also ended with a negative performance. Where the president of the San Francisco Fed said that excessive tightening could seriously affect the economy, this days before the release of the FOMC minutes. Also, among the worst performers in the index is Tesla (-6.84%), and investors do not know where to direct their attention, whether to the market, Twitter or China. Finally, the NASDAQ index ended the day lower. TuanChe Ltd. ADR Inc. was the company that declined the most (-80.20%), followed by G Medical Innovations Holdings Ltd. (-25.14%) and EQONEX Ltd. On the other hand, Tesla's shares are threatened by the decisions of its management and at the same time by the context in which the markets find themselves, so much so that it is estimated that it could be worth half of what it was worth four months ago. Thus, DOW JONES -0.13%, S&P 500 -0.39% and NASDAQ -1.09% ended the day with negative results.

Europe:

The main European indices ended the session with negative returns. The pan-European STOXX 600 index closed lower due to the return of tightening in China. Investors also rushed to seek safety on concerns about a weakening global economy. The UK market, reflected in the FTSE 100, was hit by losses in the commodity sectors with -1.46% and energy with -3.35%. In addition, the Chancellor declared that the UK is in recession and the OBR forecast an economic contraction of 1.4%. Similarly, the German market, reflected in the DAX index, closed in negative territory, driven by a context in which investors are dealing with the rise in global interest rates and the growing risks of recession. The French market closed in negative territory as a rise in coronavirus cases in China undermined recent bets that Beijing will withdraw its strict "Covid Zero" policy to stimulate the economy. Thus, the biggest losers were Harbour Energy PLC (-8.52%) which is an independent oil and gas company, followed by Mediobanca Banca di Credito Finanziario SpA (-7.44%), a long-established company in lending, advisory and capital markets services. Thus, FTSE 100 -0.12%; CAC 40 -0.15%; DAX -0.36%; STOXX 600 -0.06% ended at negative levels.

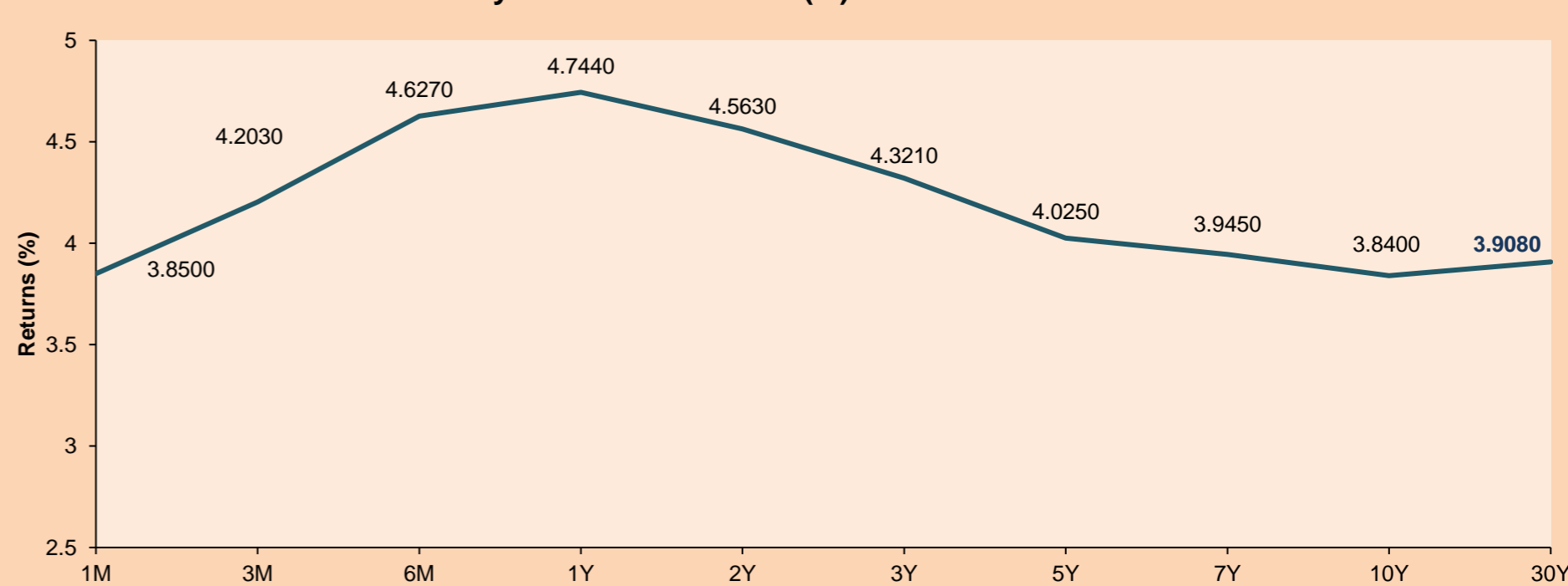
Asia:

Major Asian indices closed with mostly negative returns. The Chinese market ended with negative returns. In a context where China continues to struggle with numerous Covid-19 outbreaks from Zhengzhou to Chongqing. This increased investor distrust of an early relaxation in tight pandemic restrictions; however, rising infections boosted some healthcare stocks. Likewise, consumer goods fell 1.8%, while tourism companies ended the session down 2.9% leading the index's decline. In line, the Hang Seng index closed lower with technology stocks and property developers declining 3% and 1.5%, respectively. The South Korean market ended with losses due to renewed concerns over Covid-19 outbreaks in China, while the country's weak export data weighed on sentiment with a 16.7% drop in November dragged down by weak chip demand. Among the heavyweights, Samsung fell by 0.65%, Sk Hynix by -2.38% and LG Energy by -4.18%. The Japanese market closed with positive returns limited by low expectations. Sapporo Holdings shares led the gains with a 2.8% increase, also reopening hopes have boosted the brewer by more than 7%. The Australian market ended lower after mining stocks fell after China reinstated its health restrictions. Iron ore exporting mining companies fell 1.7% with BHP Group down 2.3% leading the session's losses. Thus, NIKKEI +0.16%; HANG SENG -1.87%; CSI 300 -0.85%; S&P/ASX 200 -0.18%; KOSPI -1.02, SHANGHAI COMPOSITE -0.39% ended with mostly negative performances.

ETFs

	Curr.	Close	1D	5D	30 D	YTD	Exchange
SPDR S&P 500 ETF TRUST	USD	394.59	-0.36%	-0.13%	5.42%	-16.92%	NYSE Arca
ISHARES MSCI EMERGING MARKET	USD	37.55	-1.26%	-1.00%	6.46%	-23.13%	NYSE Arca
ISHARES IBOXX HIGH YLD CORP	USD	74.20	-0.04%	0.41%	2.36%	-14.72%	NYSE Arca
FINANCIAL SELECT SECTOR SPDR	USD	35.48	0.31%	0.34%	10.22%	-9.14%	NYSE Arca
VANECK GOLD MINERS ETF	USD	27.18	-0.69%	-3.34%	11.67%	-15.14%	NYSE Arca
ISHARES RUSSELL 2000 ETF	USD	182.76	-0.52%	-1.11%	5.83%	-17.84%	NYSE Arca
SPDR GOLD SHARES	USD	161.88	-0.56%	-1.84%	5.01%	-5.31%	NYSE Arca
ISHARES 20+ YEAR TREASURY BO	USD	100.06	0.42%	2.47%	7.40%	-32.48%	NASDAQ GM
INVESTCO QQQ TRUST SERIES 1	USD	281.89	-1.03%	-1.24%	2.35%	-29.15%	NASDAQ GM
ISHARES BIOTECHNOLOGY ETF	USD	133.00	-0.55%	-1.25%	10.01%	-12.86%	NASDAQ GM
ENERGY SELECT SECTOR SPDR	USD	90.39	-1.35%	-2.91%	3.98%	62.86%	NYSE Arca
PROSHARES ULTRA VIX ST FUTUR	USD	8.38	-4.01%	-8.81%	-30.57%	-32.58%	Cboe BZX
UNITED STATES OIL FUND LP	USD	69.03	0.00%	-4.01%	-2.18%	26.99%	NYSE Arca
ISHARES MSCI BRAZIL ETF	USD	30.12	2.21%	-2.24%	-11.65%	7.30%	NYSE Arca
SPDR S&P OIL & GAS EXP & PR	USD	151.00	-1.90%	-3.71%	2.31%	57.50%	NYSE Arca
UTILITIES SELECT SECTOR SPDR	USD	69.16	0.45%	2.81%	9.24%	-3.38%	NYSE Arca
ISHARES US REAL ESTATE ETF	USD	87.06	0.54%	1.21%	10.38%	-25.04%	NYSE Arca
SPDR S&P BIOTECH ETF	USD	79.87	-1.41%	-5.00%	1.31%	-28.66%	NYSE Arca
ISHARES IBOXX INVESTMENT GRA	USD	105.65	-0.15%	1.55%	6.20%	-20.28%	NYSE Arca
ISHARES JP MORGAN USD EMERGI	USD	83.60	0.01%	0.98%	7.26%	-23.34%	NASDAQ GM
REAL ESTATE SELECT SECT SPDR	USD	38.32	0.71%	1.62%	10.53%	-26.04%	NYSE Arca
ISHARES CHINA LARGE-CAP ETF	USD	25.69	-1.53%	0.39%	7.40%	-29.77%	NYSE Arca
CONSUMER STAPLES SPDR	USD	75.39	0.95%	3.36%	9.40%	-2.23%	NYSE Arca
VANECK JUNIOR GOLD MINERS	USD	33.42	-0.51%	-3.63%	11.96%	-20.30%	NYSE Arca
SPDR BLOOMBERG HIGH YIELD BO	USD	90.94	-0.09%	0.54%	2.44%	-16.24%	NYSE Arca
VANGUARD REAL ESTATE ETF	USD	85.95	0.53%	1.27%	9.98%	-25.91%	NYSE Arca
GRAYSCALE BITCOIN TRUST BTC	USD	8.28	-0.84%	-7.54%	-27.50%	-75.82%	OTC US

USA Treasury Bonds Yield Curve (%)



Source: Bloomberg

LIMA

Stocks

	Ticker	Currency	Price	1D*	5D*	30D*	YTD*	Frequency	Volume (US\$)	Beta	Dividend Yield (%)	Price Earning	Market Cap. (M US\$)	Economic Sector*	Index Weight
▲	ALICORC1 PE**	S/.	6.90	0.90%	-0.42%	-0.55%	-5.53%	100.00%	257,568	0.72	3.62	10.72	1,529.28	Industrial	3.53%
-	ATACOCB1 PE**	S/.	0.07	0.00%	0.00%	-12.50%	-41.67%	31.58%	3,389	#N/A N/A	0.00	-	17.21	Mining	1.02%
-	BACKUS1 PE**	S/.	24.40	0.00%	0.62%	0.62%	19.02%	89.47%	989	0.78	0.00	7.59	8,575.61	Industrial	0.82%
▼	BAP PE**	US\$	150.00	-0.27%	-4.00%	12.65%	21.18%	100.00%	272,368	1.20	2.67	-	11,928.00	Diverse	5.82%
▲	BVN PE**	US\$	7.85	1.16%	-2.97%	17.16%	7.53%	94.74%	609,833	1.66	0.89	-	2,163.73	Mining	5.88%
▼	CASAGRC1 PE**	S/.	7.80	-3.11%	-4.29%	-13.33%	-14.29%	89.47%	28,479	0.76	78.54	7.21	171.02	Agricultural	1.31%
-	BBVAC1 PE**	S/.	1.60	0.00%	0.00%	5.26%	-3.61%	89.47%	79,113	0.58	6.60	5.95	3,074.47	Finance	2.85%
▼	CORAREI1 PE**	S/.	1.35	-0.74%	-4.26%	-6.25%	-21.51%	84.21%	54,574	0.74	11.23	4.37	509.32	Industrial	1.72%
▼	CPACASC1 PE**	S/.	3.85	-3.75%	-14.44%	-8.33%	-22.22%	100.00%	67,558	0.73	10.91	10.69	464.61	Industrial	2.38%
▼	CVERDEC1 PE**	US\$	29.98	-3.29%	-1.87%	-0.07%	-19.47%	68.42%	160,871	0.99	6.19	10.55	10,494.68	Mining	5.25%
▲	ENGEPEC1 PE**	S/.	3.85	10.00%	36.04%	45.28%	35.56%	89.47%	428,187	0.79	15.88	8.67	1,751.57	Public Services	1.44%
▲	ENDISPC1**	S/.	5.77	15.40%	36.73%	44.25%	44.25%	73.68%	254,394	0.83	7.24	8.74	959.06	Public Services	0.98%
▼	FERREYC1 PE**	S/.	2.20	-2.22%	-3.08%	-1.35%	7.32%	100.00%	139,454	0.70	11.81	4.40	541.76	Diverse	4.90%
▼	AENZAC1 PE**	S/.	0.70	-9.09%	-5.41%	-2.78%	-48.91%	57.89%	30,909	#N/A N/A	0.00	-	218.10	Diverse	4.05%
▲	IFS PE**	US\$	23.70	4.41%	-2.07%	7.14%	-11.73%	84.21%	118,085	0.82	10.13	6.90	2,735.41	Diverse	7.22%
▲	INRETC1 PE**	US\$	35.01	0.03%	0.03%	1.48%	0.17%	94.74%	222,314	0.87	3.91	18.92	3,807.23	Diverse	5.28%
▲	LUSURC1 PE**	S/.	16.40	0.43%	5.60%	18.84%	15.17%	94.74%	11,874	0.00	6.60	13.44	2,078.71	Public Services	1.81%
▼	MINSURI1 PE**	S/.	3.65	-0.82%	-2.67%	2.53%	-7.59%	100.00%	14,986	1.10	19.94	1.52	2,739.07	Mining	3.09%
-	PML PE**	US\$	0.09	0.00%	0.00%	0.00%	-25.00%	10.53%	13	#N/A N/A	0.00	-	24.32	Mining	2.12%
▼	SCCO PE**	US\$	57.00	-2.31%	-6.25%	17.77%	-7.74%	73.68%	19,950	1.48	6.14	15.83	44,066.61	Industrial	2.12%
-	SIDERC1 PE**	S/.	1.59	0.00%	8.90%	-4.79%	-0.62%	89.47%	7,448	0.68	27.74	4.62	289.71	Mining	2.14%
-	SIDERC1 PE**	US\$	1.59	0.00%	8.90%	-4.79%	-0.62%	0.00%	28,612	1.21	0.00	-	#N/A N/A	Industrial	1.43%
▼	UNACEMC1 PE**	S/.	1.70	-2.30%	-2.30%	-1.73%	-29.17%	73.68%	83,980	1.02	6.47	-	804.52	Mining	2.93%
▼	VOLCABC1 PE**	S/.	0.52	-1.89%	-1.89%	0.00%	-13.33%	100.00%	108,772	1.40	0.00	29.22	551.78	Industrial	3.00%
▲	BROCALC1 PE**	S/.	5.94	3.48%	8.00%	14.23%	14.23%	26.32%	6,185	0.00	0.45	43.46	248.12	Mining	5.90%
-	RIMSEGC1 PE**	S/.	0.78	0.00%	0.00%	0.00%	-9.30%	10.53%	8,659	0.00	0.00	11.52	335.36	Finance	3.09%
▲	CORAREC1 PE**	US\$	1.92	1.05%	-0.52%	0.00%	1.05%	26.32%	249,000	0.00	6.17	6.22	1,956.70	Mining	2.12%
-	ENGIEC1 PE**	S/.	4.90	0.00%	-0.20%	-2.00%	-16.38%	57.89%	61,432	#N/A N/A	0.00	13.81	767.01	Diversas	2.12%
-	GBVLAC1 PE**	S/.	2.23	0.00%	0.00%	-5.11%	-18.01%	26.32%	1,997	0.00	0.00	-	105.70	Diversas	2.14%

Quantity of shares: 29
Source: Bloomberg, Economática
* Bloomberg Industry Classification System
** PER is used in the stock market and original currency of the instrument

*Legend: Variation 1D: 1 Day; 5D: 5 Days, 1M: 1 Month; YTD: Var.% 12/31/21 to date

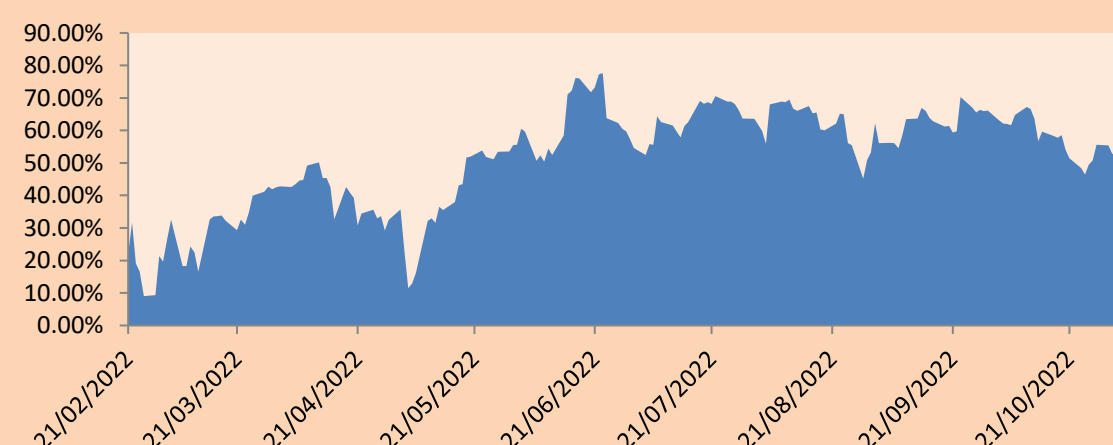
Sectorial Indices

		Close	1D*	5D*	30D*	YTD*	Beta
▼	S&P/BVLMining	382.54	-1.31%	-4.77%	11.03%	-7.06%	1.42
▼	S&P/BVLConsumer	1,279.56	-0.54%	-1.61%	3.18%	11.46%	0.58
▼	S&P/BVLIndustrials	235.35	-2.43%	-2.90%	-0.46%	-8.80%	0.45
▲	S&P/BVLFinancials	1,054.66	0.30%	-3.92%	8.00%	16.40%	1.25
▼	S&P/BVLConstruction	229.50	-2.53%	-2.80%	-0.02%	-19.01%	0.43
▲	S&P/BVLPublicSvcs	737.91	5.49%	17.49%	22.89%	34.53%	0.00
▲	S&P/BVLElectricUtil	720.39	5.49%	17.49%	22.89%	34.53%	0.00

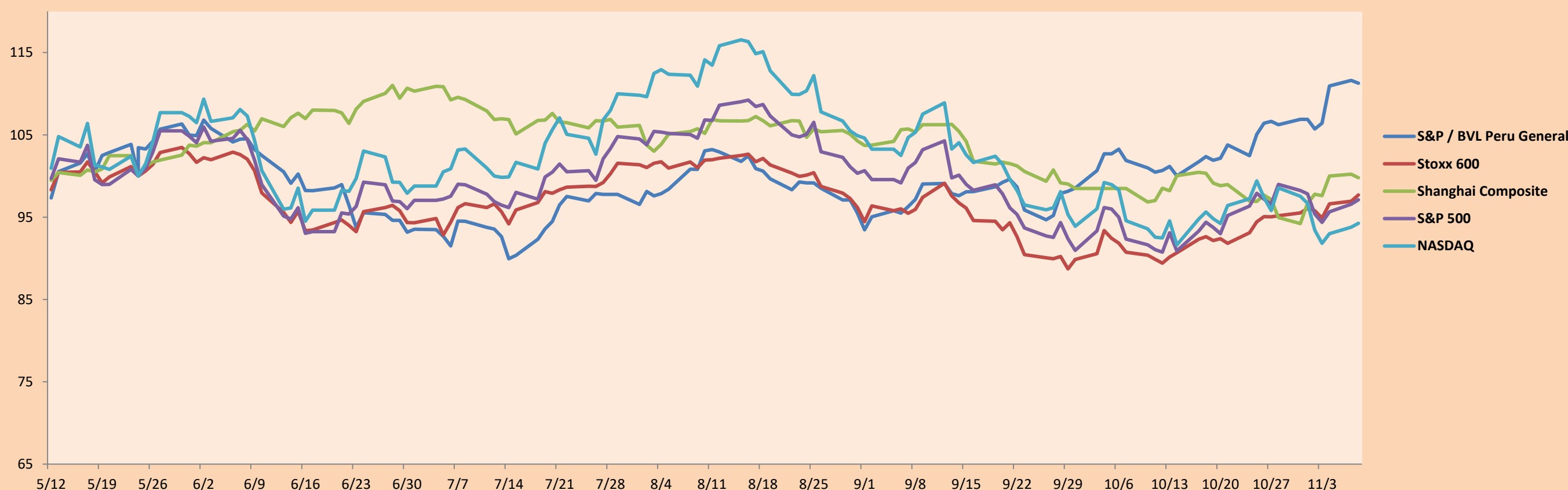
S&P/BVLConstructionTRPEN

*Legend: Variation 1D: 1 Day; 5D: 5 Days, 1M: 1 Month; YTD: Var.% 12/31/21 to date

Correlation Graph of Returns of Mining Index against Metallic Index of London (3 months)



Indices (6 months)



Base: 24/05/22=100
Source: Bloomberg

Capital Market Laboratory Coordinator: MS Javier Penny Pestana
Collaboration: Mariafe Urrutia, Fedele Calle, Nikolas Díaz y Nadia Contreras
email: pulsobursatil@ulima.edu.pe
facebook: www.facebook.com/pulsobursatil.ul

SOVEREIGN RATING

RISK RATINGS

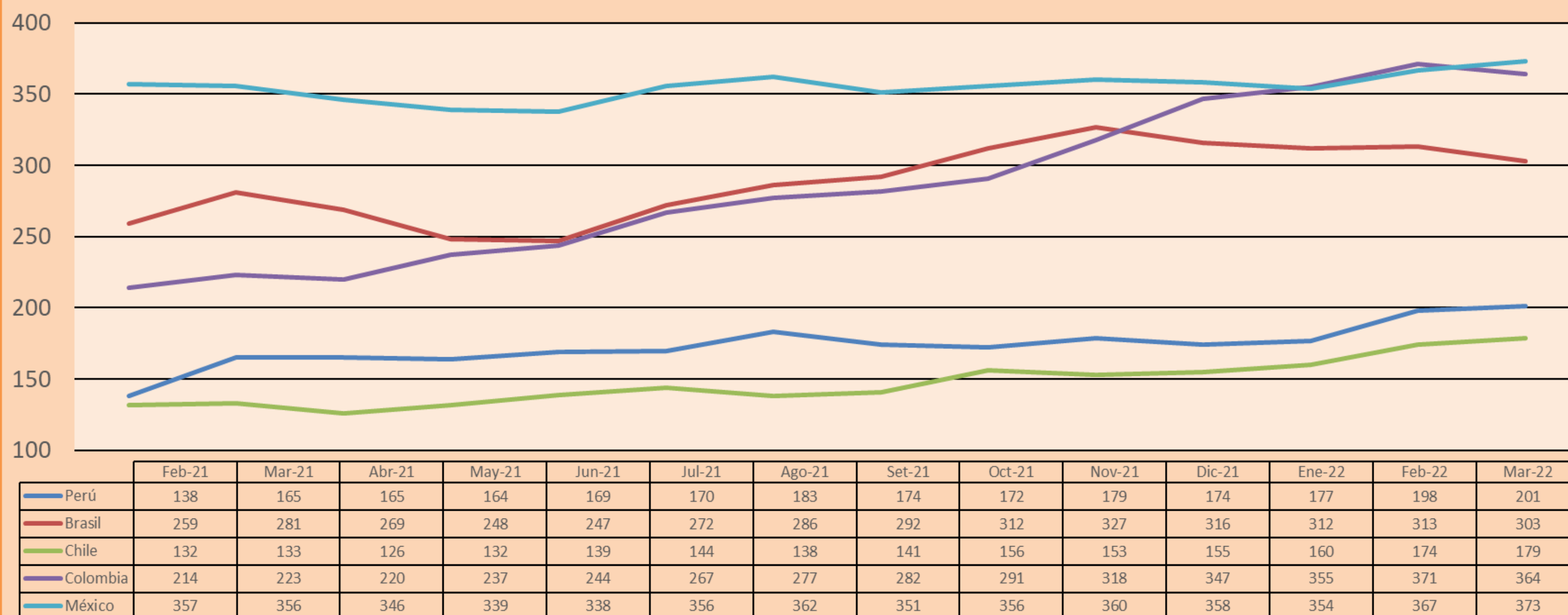
Moody's	S&P	Fitch	
Aaa	AAA	AAA	Prime
Aa1	AA+	AA+	High credit quality
Aa2	AA	AA	
Aa3	AA-	AA-	
A1	A+	A+	Medium-high grade, with low credit risk
A2	A	A	
A3	A-	A-	
Baa1	BBB+	BBB+	Moderate Credit Risk
Baa2	BBB	BBB	
Baa3	BBB-	BBB-	
Ba1	BB+	BB+	It has speculative elements and it is subject to substantial credit risk
Ba2	BB	BB	
Ba3	BB-	BB-	
B1	B+	B+	It is considered speculative and it has high credit risk
B2	B	B	
B3	B-	B-	
Caa1	CCC+	CCC	
Caa2	CCC	CCC	
Caa3	CCC-	CCC	
Ca	CC	CC	Very close to default or in default
C	C	CC	
C	D	DD	
C	D	D	

Source: Bloomberg

Latin America Credit Rating			
Clasificadora de riesgo			
Country	Moody's	Fitch	S&P
Peru	Baa1	BBB	BBB
México	Ba2	BB-	BB-
Venezuela	C	WD	NR
Brazil	Ba2	BB-	BB-
Colombia	Baa2	BB+	BB+
Chile	A2	A-	A
Argentine	Ca	WD	CCC+
Panama	Baa2	BBB-	BBB

Source: Bloomberg

LATAM Country Risk(bps)



Source: BCRP

Capital Market Laboratory Coordinator: MS Javier Penny Pestana
Collaboration: Mariafe Urrutia, Fedele Calle, Nikolas Díaz y Nadia Contreras
email: pulsobursatil@ulima.edu.pe
facebook: www.facebook.com/pulsobursatil.ul