

# PULSO BURSÁTIL

FACULTAD DE CIENCIAS EMPRESARIALES Y ECONÓMICAS  
CARRERA DE ECONOMÍA  
LABORATORIO DE MERCADO DE CAPITALES

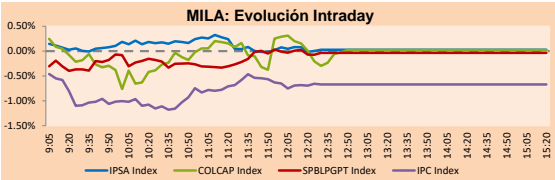


## MILA

Lima, March 17, 2023

Main Indexes	Close	1 D	5 D	1 M	YTD	Cap. Burs. (US\$ bill)
▲ IPSA (Chile)	5,199.35	0.02%	-3.60%	-2.43%	-1.18%	107.74
▲ IGPA (Chile)	26,946.23	0.35%	-3.39%	-3.67%	-2.39%	125.98
▲ COLSC (Colombia)	878.04	0.31%	0.68%	5.41%	-4.87%	3.13
▲ COLCAP (Colombia)	1,118.68	0.02%	-5.78%	-7.54%	-13.02%	51.39
▼ S&P/BVL (Perú)*	21,369.05	-0.03%	-1.09%	-2.68%	0.13%	100.16
▲ S&P/BVL SEL (Perú)	554.21	0.10%	-0.82%	-3.61%	-0.36%	84.16
▲ S&P/BVL LIMA 25	29,812.46	0.37%	0.02%	-2.27%	-1.05%	99.63
▼ IPC (México)	52,148.67	-0.68%	-1.22%	-3.06%	7.59%	347.22
▲ S&P MILA 40	453.39	0.36%	-6.52%	-5.77%	-1.32%	6,551.97

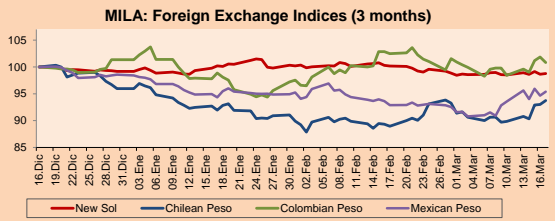
\*Legend: Variation 1D: 1 day; 5D: 5 days; 1M: 1 Month; YTD: Var% 12/31/21 to date



Source: Bloomberg

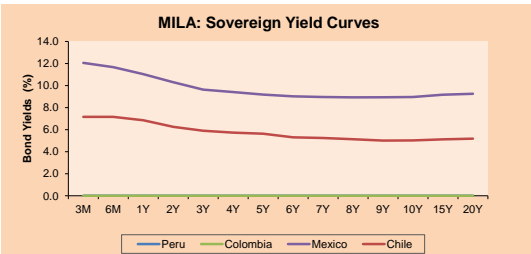
Currency	Price	1D*	5D*	30 D*	YTD*
▲ Sol (PEN)	3,7906	0.11%	0.24%	-1.98%	-0.41%
▲ Chilean Peso (CLP)	831.30	0.77%	4.32%	4.76%	-2.33%
▼ Colombian Peso (COP)	4,827.41	-1.02%	2.42%	-1.98%	-0.52%
▲ Mexican Peso (MXN)	18.87	0.78%	1.97%	1.53%	-3.23%

\*Legend: Variation 1D: 1 day; 5D: 5 days; 1M: 1 Month; YTD: Var% 12/31/21 to date



Base: 16/12/22=100  
Source: Bloomberg

Fixed Income	Currency	Price	Bid Yield (%)	Ask Yield (%)	Duration
PERU 7.35 07/21/25	USD	105.942	4.73	4.53	2.12
PERU 4.125 08/25/27	USD	98.46	4.56	4.46	3.97
PERU 8.75 11/21/33	USD	126.311	5.51	5.41	7.16
PERU 6.55 03/14/37	USD	109.332	5.62	5.54	8.85
PERU 5.625 11/18/2050	USD	101.076	5.58	5.52	13.70
CHILE 2.25 10/30/22	USD	-	-	-	-
CHILE 3.125 01/21/26	USD	96.963	4.35	4.19	2.66
CHILE 3.625 10/30/42	USD	79.972	5.32	5.24	12.98
COLOM 11.85 03/09/28	USD	118.548	7.38	7.27	3.82
COLOM 10.375 01/28/33	USD	111.295	8.81	8.48	6.21
COLOM 7.375 09/18/37	USD	92.223	8.36	8.26	8.54
COLOM 6.125 01/18/41	USD	77.85	8.61	8.53	9.61
MEX 4 10/02/23	USD	77.85	8.61	8.529	9.61
MEX5.55 01/45	USD	93.15	6.15	6.10	12.13



Source: Bloomberg

### Equity

Largest gains	Exchange	Currency	Price	▲ %
Empresa de Energ	Colombia	COP	1645.00	5.45
Chocolates	Colombia	COP	52690.00	5.38
Industrias Peñol	Mexico	MXN	249.51	4.52
Buenaventura-Inv	Peru	USD	8.25	4.17
Soquimich-B	Chile	CLP	61162.00	2.62

Per Turnover	Exchange	Amount (US\$)
Soquimich-B	Chile	77,621,593
Grupo F Banort-O	Mexico	23,042,873
Walmart de Méx-V	Mexico	16,389,637
Fomento Econ-Ubd	Mexico	11,691,705
Banco Santander	Chile	7,183,914

Largest losses	Exchange	Currency	Price	▼ %
BANCO DAVIVIENDA	Colombia	COP	20540	-6.08
Isa SA	Colombia	COP	15000	-5.18
Grupo Aval	Colombia	COP	526.9	-5.06
Credicorp Ltd	Peru	USD	123.17	-3.13
Grupo F Banort-O	Mexico	MXN	144.68	-2.92

Per Volume	Exchange	Volume
Banco Santander	Chile	171,461,523
Corpanca	Chile	150,751,457
Banco de Chile	Chile	36,641,789
Colbún SA	Chile	19,327,403
ENEL CHILE SA	Chile	16,111,911

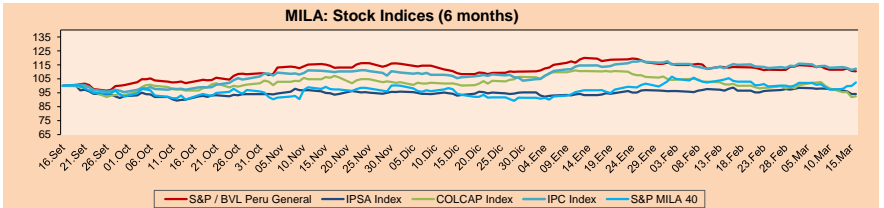
### MILA

Peru: The BVL General index finished today's session with a positive result of +0.01. The index maintains a negative accumulated annual trend of -14.24% in local currency and a negative accumulated trend of -15.23% in dollar-adjusted currency. Regarding the S&P/BVL Peru SEL, it varied +0.09% while the S&P/BVL LIMA 25 varied +0.35%. The spot PEN reached 5/.3.7924. Headline: Crisis of confidence in banks alerts emerging market traders.

Chile: The IPSA index ended the day with a positive return of +0.06%. The most benefited sectors of the day were Materials (1.60%) and Information Technology (+1.23%). The best performing stocks were Soc quimica y minera (+2.17%) and Colbun (+1.50%). Headline: Taxpayers put changes in tax domicile on hold after rejection of wealth tax.

Colombia: The COLCAP index ended the session with a negative return of -0.30%. The sectors that benefited the most during the day were Consumer Staples (+5.38%) and Utilities (+0.54%). The best performing stocks were Grupo Energía Bogota with 7.05% and Grupo Nutresa with 5.38%. Headline: Gestarsaluda seeks clarity on free choice of EPS in the reform.

Mexico: The IPC index closed the day in negative territory with -0.68%. The sectors that lost the most during the day were Finance (-2.09%) and Communication services (-0.77%). The worst performing stocks were Cemex with -2.90% and Grupo Elektra with -2.59%. Headline: SVB Financial files for Chapter 11 bankruptcy protection.

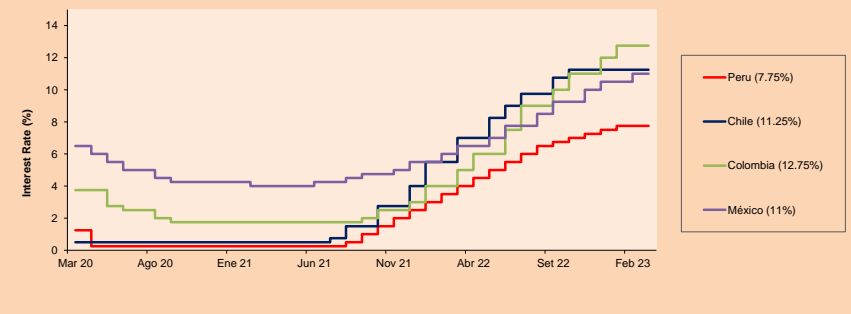


Base: 19/09/22=100  
Source: Bloomberg

### ETFs

ETFs	Curr.	Close	1D	5D	30 D	YTD	Exchange
▲ iShares MSCI All Peru Caped Index Fund	USD	28.435	0.05%	-2.45%	-4.29%	-0.82%	NYSE Arca
▼ iShares MSCI All Chile Caped Index Fund	USD	26.79	-1.40%	-7.11%	-8.66%	-1.11%	Cboe BZX
Global X MSCI Colombia	USD	-	-	-	-	-	-
▼ iShares MSCI Mexico Capped	USD	55.15	-1.36%	-3.21%	-3.99%	11.53%	NYSE Arca
▼ iShares MSCI Emerging Markets	USD	37.665	-0.46%	-0.46%	-6.10%	-0.62%	NYSE Arca
▼ Vanguard FTSE Emerging Markets	USD	38.775	-0.42%	-0.88%	-5.70%	-0.53%	NYSE Arca
▲ iShares Core MSCI Emerging Markets	USD	46.65	-0.47%	-0.72%	-5.64%	-0.11%	NYSE Arca
▲ iShares JP Morgan Emerging Markets Bonds	USD	52.97	0.06%	-0.04%	-2.20%	-0.15%	Cboe BZX
- Morgan Stanley Emerging Markets Domestic	USD	4.47	0.00%	-1.32%	-1.76%	1.59%	New York

### MILA: Policy Rate



Source: Bloomberg

Capital Market Laboratory Coordinator: MS Javier Penny Pestana  
Collaboration: Mariafe Urrutia, Fedele Calle, Nikolas Diaz y Nadia Contreras  
email: pulsobursatil@ulima.edu.pe  
facebook: www.facebook.com/pulsobursatil.ul

The content of this document is just for informational purposes. The information and opinions expressed should not be considered as recommendations for future decisions. Under any circumstances, the Capital Market Laboratory of University of Lima will be responsible for the use of the statements in this document.



# LIMA

## Stocks

Ticker	Currency	Price	1D*	5D*	30D*	YTD*	Frequency	Volume (US\$)	Beta	Dividend Yield (%)	Price Earning	Market Cap. (M US\$)	Economic Sector*	Index Weight
▲ ALICORC1 PE**	S/.	6.60	0.31%	0.68%	5.41%	-4.87%	100.00%	1,575,252	0.57	3.79	10.25	1,482.88	Industrial	3.53%
- ATACOB1 PE**	S/.	0.07	0.00%	0.00%	0.00%	0.00%	5.00%	3,027	0.00	0.00	-	17.95	Mining	1.02%
▲ BACKUS1 PE**	S/.	26.00	3.79%	3.79%	5.05%	5.78%	75.00%	1,013,020	0.75	4.81	8.32	8,019.22	Industrial	0.82%
▼ BAP PE**	US\$	123.17	-3.13%	-4.15%	-4.55%	-8.93%	100.00%	720,673	1.35	3.25	-	9,794.48	Diverse	5.82%
▲ BVN PE**	US\$	8.25	4.17%	3.77%	15.22%	10.15%	100.00%	549,299	1.73	0.85	-	2,270.74	Mining	5.88%
- CASAGRC1 PE**	S/.	8.40	0.00%	-2.33%	5.00%	6.33%	65.00%	98	0.36	0.00	7.63	186.66	Agricultural	1.31%
▼ BBVAC1 PE**	S/.	1.70	-1.16%	0.59%	0.00%	0.59%	100.00%	8,695	0.35	6.21	5.94	3,310.75	Finance	2.85%
- CORARE1 PE**	S/.	1.25	0.00%	-1.57%	0.81%	-10.71%	55.00%	515	0.58	0.00	4.05	530.19	Industrial	1.72%
▲ CPACASC1 PE**	S/.	4.06	0.25%	0.50%	-0.73%	2.78%	85.00%	79,113	0.45	10.34	9.90	491.72	Industrial	2.38%
▼ CVERDEC1 PE**	US\$	28.29	-0.04%	-0.04%	-7.22%	-5.07%	70.00%	199,474	0.89	4.04	9.96	9,903.08	Mining	5.25%
▼ ENGEPEC1 PE**	S/.	3.95	-0.75%	-1.25%	7.34%	9.72%	75.00%	7,822	0.83	15.48	8.84	1,821.34	Public Services	1.44%
- ENDISPC1**	S/.	13.40	0.00%	-0.74%	11.95%	88.73%	100.00%	293,280	0.90	1.93	17.84	2,257.36	Public Services	0.98%
- FERREYC1 PE**	S/.	2.20	0.00%	0.00%	0.00%	-1.35%	100.00%	170,003	0.61	11.81	4.40	549.08	Diverse	4.90%
- AENZAC1 PE**	S/.	0.66	0.00%	-1.49%	-16.46%	-20.48%	35.00%	2,999	0.00	0.00	-	208.41	Diverse	4.05%
▼ IFS PE**	US\$	21.90	-0.32%	-2.19%	-1.31%	-8.37%	95.00%	34,480	0.92	7.99	5.77	2,527.65	Diverse	7.22%
▲ INRET1 PE**	US\$	33.70	0.60%	-2.32%	-2.88%	2.09%	65.00%	357,132	0.50	2.05	18.46	3,664.77	Diverse	5.28%
- LUSURC1 PE**	US\$	14.00	0.00%	-3.45%	-5.41%	-7.89%	70.00%	8,880	0.00	8.19	10.66	1,798.48	Public Services	1.81%
- MINSUR1 PE**	S/.	3.45	0.00%	1.47%	-6.76%	-2.82%	95.00%	2,616	1.09	0.00	1.89	2,623.95	Mining	3.09%
- PML PE**	US\$	0.07	0.00%	-12.50%	-12.50%	-22.22%	20.00%	1,865	0.00	0.00	-	19.56	Mining	2.12%
▼ SCCO PE**	US\$	68.00	-1.00%	-6.32%	-8.72%	10.44%	95.00%	832,589	1.47	5.15	18.74	52,570.91	Industrial	2.12%
- SIDERC1 PE**	S/.	1.70	0.00%	-1.16%	1.19%	3.66%	75.00%	1,071	0.49	0.00	4.93	313.93	Mining	2.14%
- TV PE**	US\$	0.00	0.00%	0.00%	0.00%	0.00%	0.00%	0	0.00	0.00	-	0.00	Industrial	1.43%
- UNACEMC1 PE**	S/.	1.58	0.00%	0.00%	-9.20%	-12.22%	95.00%	422	0.97	0.00	-	757.83	Mining	2.93%
- VOLCABC1 PE**	S/.	0.46	0.00%	0.00%	-13.21%	-9.80%	100.00%	109,674	0.91	0.00	-	748.30	Industrial	3.00%
- BROCALC1 PE**	S/.	5.87	0.00%	-4.24%	-4.24%	-4.08%	5.00%	15,795	0.00	0.00	-	251.64	Mining	5.90%
- RIMSEGC1 PE**	S/.	0.75	0.00%	0.00%	0.00%	7.14%	5.00%	537	0.00	0.00	5.77	352.98	Finance	3.09%
- CORAREC1 PE**	US\$	2.00	0.00%	0.00%	2.56%	4.17%	20.00%	20,000	0.00	0.00	6.48	2,009.73	Mining	2.12%
- ENGIEC1 PE**	S/.	5.26	0.00%	0.00%	-0.57%	6.26%	20.00%	948	0.00	0.00	12.82	834.49	Diversas	2.12%
- GBVLAC1 PE**	S/.	0.00	0.00%	0.00%	0.00%	0.00%	0.00%	0	0.00	0.00	-	0.00	Diversas	2.14%

Quantity of shares: 29

Source: Bloomberg, Economática

\* Bloomberg Industry Classification System

\*\* PER is used in the stock market and original currency of the instrument

\*Legend: Variation 1D: 1 Day; 5D: 5 Days, 1M: 1 Month; YTD: Var.% 12/31/21 to date

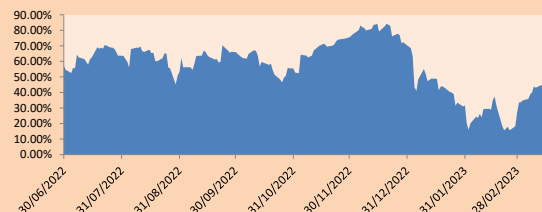
### Sectorial Indices

	Close	1D*	5D*	30D*	YTD*	Beta
▲ S&P/BVLMining	424.58	0.19%	-3.29%	-6.28%	7.94%	1.48
▲ S&P/BVLConsumer	1,248.36	1.52%	0.74%	-0.04%	1.20%	0.29
▲ S&P/BVLIndustrials	233.04	0.03%	-0.13%	-3.76%	-4.89%	0.29
▼ S&P/BVLFinancials	870.07	-2.74%	-3.57%	-5.63%	-8.91%	1.41
▲ S&P/BVLConstruction	226.26	0.06%	-0.19%	-5.45%	-6.49%	0.22
▲ S&P/BVLPublicSvcs	1,001.09	-0.22%	-0.66%	6.33%	29.31%	0.24
▼ S&P/BVLElectricUtil	977.31	-0.22%	-0.66%	6.33%	29.31%	0.24

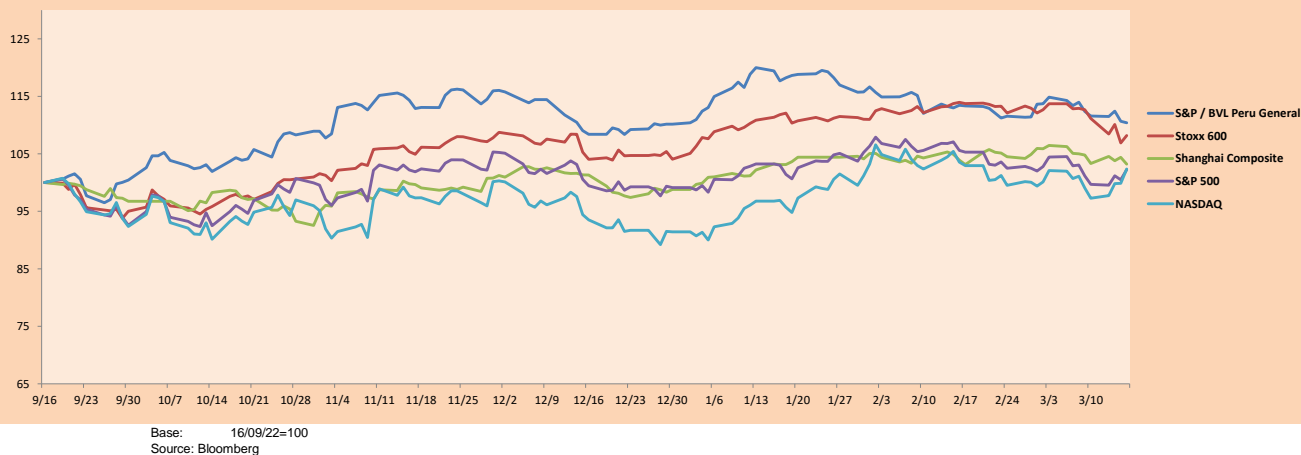
S&P/BVLConstructionTRPEN

\*Legend: Variation 1D: 1 Day; 5D: 5 Days, 1M: 1 Month; YTD: Var.% 12/31/21 to date

Correlation Graph of Returns of Mining Index against Metallic Index of London (3 months)



Indices (6 months)



Base: 16/09/22=100  
Source: Bloomberg

Capital Market Laboratory Coordinator: MS Javier Penny Pestana  
Collaboration: Mariafe Urrutia, Fedele Calle, Nikolas Díaz y Nadia Contreras  
email: pulsoborsatil@ulima.edu.pe  
facebook: www.facebook.com/pulsoborsatil.ul

## SOVEREIGN RATING

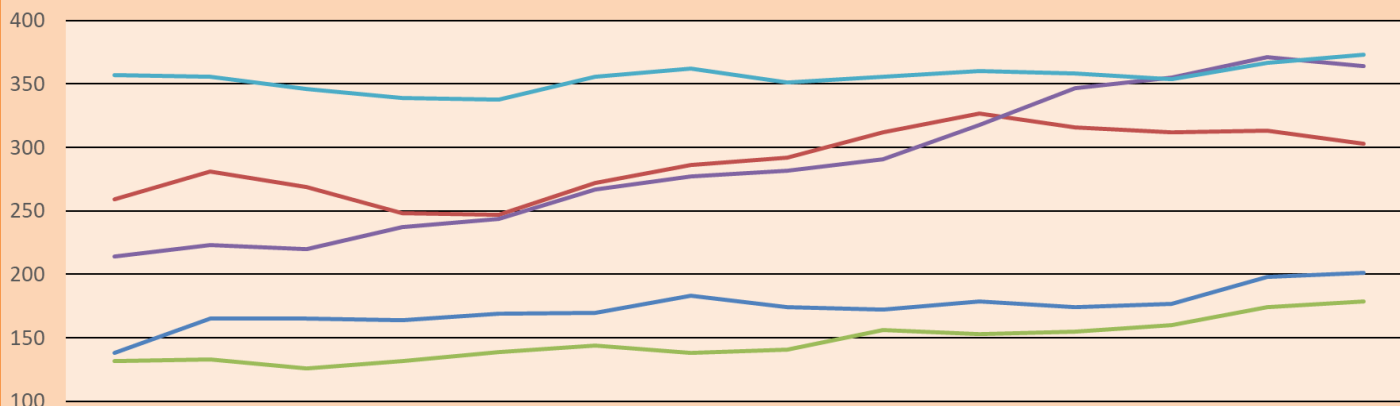
RISK RATINGS			
Moody's	S&P	Fitch	
Aaa	AAA	AAA	Prime
Aa1	AA+	AA+	High credit quality
Aa2	AA	AA	
Aa3	AA-	AA-	
A1	A+	A+	Medium-high grade, with low credit risk
A2	A	A	
A3	A-	A-	
Baa1	BBB+	BBB+	Moderate Credit Risk
Baa2	BBB	BBB	
Baa3	BBB-	BBB-	
Ba1	BB+	BB+	It has speculative elements and it is subject to substantial credit risk
Ba2	BB	BB	
Ba3	BB-	BB-	
B1	B+	B+	It is considered speculative and it has high credit risk
B2	B	B	
B3	B-	B-	
Caa1	CCC+	CCC	
Caa2	CCC	Bad credit conditions and it is subject to high credit risk	
Caa3	CCC-		
Ca	CC		
	C	DDD	
C	D	DD	Very close to default or in default
		D	

Source: Bloomberg

Latin America Credit Rating			
Clasificadora de riesgo			
Country	Moody's	Fitch	S&P
Peru	Baa1	BBB	BBB
México	Ba2	BB-	BB-
Venezuela	C	WD	NR
Brazil	Ba2	BB-	BB-
Colombia	Baa2	BB+	BB+
Chile	A2	A-	A
Argentina	Ca	WD	CCC+
Panama	Baa2	BBB-	BBB

Source: Bloomberg

## LATAM Country Risk(bps)



	Feb-21	Mar-21	Abr-21	May-21	Jun-21	Jul-21	Ago-21	Set-21	Oct-21	Nov-21	Dic-21	Ene-22	Feb-22	Mar-22
Perú	138	165	165	164	169	170	183	174	172	179	174	177	198	201
Brasil	259	281	269	248	247	272	286	292	312	327	316	312	313	303
Chile	132	133	126	132	139	144	138	141	156	153	155	160	174	179
Colombia	214	223	220	237	244	267	277	282	291	318	347	355	371	364
México	357	356	346	339	338	356	362	351	356	360	358	354	367	373

Source: BCRP

Capital Market Laboratory Coordinator: MS Javier Penny Pestana  
Collaboration: Mariafe Urrutia, Fedele Calle, Nikolas Díaz y Nadia Contreras  
email: pulsobursatil@ulima.edu.pe  
facebook: www.facebook.com/pulsobursatil.ul