

PULSO BURSÁTIL

FACULTAD DE CIENCIAS EMPRESARIALES Y ECONÓMICAS
CARRERA DE ECONOMÍA
LABORATORIO DE MERCADO DE CAPITALES

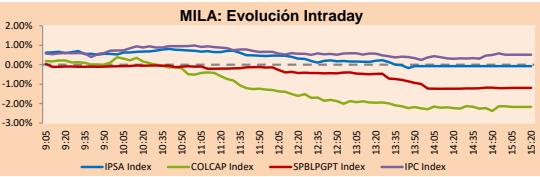


MILA

Lima, March 23, 2023

Main Indexes	Close	1 D	5 D	1 M	YTD	Cap. Burs. (US\$ bill)
▲ IPSA (Chile)	5,275.37	0.08%	1.48%	-0.70%	0.26%	115.95
▼ IGPA (Chile)	27,494.93	-0.08%	2.39%	-1.59%	-0.40%	143.30
▼ COLCAP (Colombia)	876.68	-0.71%	0.01%	7.89%	-5.02%	3.18
▼ COLCAP (Colombia)	1,096.92	-2.17%	-1.33%	-8.00%	-14.71%	52.51
▼ S&P/BVL (Perú)*	21,391.08	-1.19%	0.07%	-0.69%	0.28%	103.97
▼ S&P/BVL SEL (Perú)	555.00	-0.53%	0.24%	-1.56%	-0.22%	86.10
▼ S&P/BVL LIMA 25	29,704.38	-0.70%	0.01%	-0.61%	-1.37%	103.42
▲ IPC (México)	52,827.93	0.53%	1.43%	-0.49%	9.00%	370.55
▲ S&P MILA 40	461.52	0.75%	2.16%	-2.24%	0.45%	6,885.03

*Legend: Variation 1D: 1 day; 5D: 5 days; 1M: 1 Month; YTD: Var% 12/31/21 to date

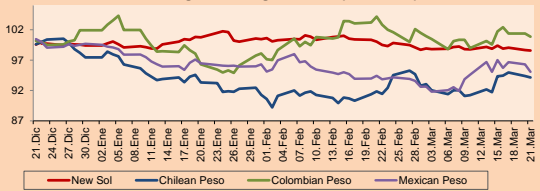


Source: Bloomberg

Currency	Price	1D*	5D*	30 D*	YTD*
▼ Sol (PEN)	3,7685	-0.03%	-0.47%	-1.60%	-0.99%
▼ Chilean Peso (CLP)	806.40	-0.38%	-2.25%	0.51%	-5.26%
▼ Colombian Peso (COP)	4,742.88	-0.53%	-2.75%	-4.38%	-2.26%
▼ Mexican Peso (MXN)	18.58	-0.15%	-0.76%	0.61%	-4.71%

*Legend: Variation 1D: 1 day; 5D: 5 days; 1M: 1 Month; YTD: Var% 12/31/21 to date

MILA: Foreign Exchange Indices (3 months)

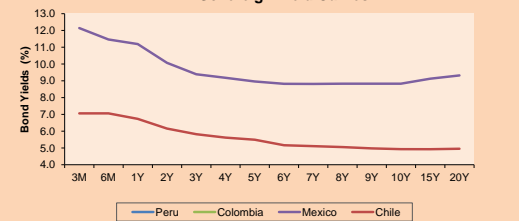


Base: 22/12/22=100
Source: Bloomberg

Fixed Income

	Currency	Price	Bid Yield (%)	Ask Yield (%)	Duration
PERU 7.35 07/21/25	USD	105.918	4.72	4.53	2.10
PERU 4.125 08/25/27	USD	98.443	4.57	4.46	3.95
PERU 8.75 11/21/33	USD	126.221	5.52	5.42	7.17
PERU 6.55 03/14/37	USD	109.015	5.66	5.56	8.85
PERU 5.625 11/18/2050	USD	100.739	5.60	5.55	13.69
CHILE 3.125 01/21/26	USD	97.168	4.28	4.12	2.64
CHILE 3.625 10/30/42	USD	79.443	5.37	5.29	13.01
COLOM 11.85 03/09/28	USD	120.175	7.02	6.91	3.82
COLOM 10.375 01/28/33	USD	113.359	8.49	8.22	6.23
COLOM 7.375 09/18/37	USD	93.995	8.14	8.03	8.60
COLOM 6.125 01/18/41	USD	79.707	8.38	8.28	9.71
MEX 4 10/02/23	USD	79.707	8.378	8.281	9.71
MEX5.55 01/45	USD	92.821	6.18	6.13	12.17

MILA: Sovereign Yield Curves



Source: Bloomberg

Equity

Largest gains	Exchange	Currency	Price	▲%
SMU SA	Chile	CLP	150.21	3.32
TF ADMINISTRADOR	Mexico	MXN	33.25	2.75
Grupo Fin Inb-O	Mexico	MXN	37.10	2.46
ENEL CHILE SA	Chile	CLP	38.90	2.10
Mexichem*	Mexico	MXN	36.82	1.97

Per Turnover

	Exchange	Amount (US\$)
Grupo F Banort-O	Mexico	78,346,178
Soquimich-B	Chile	37,737,326
Walmart de Méx-V	Mexico	34,697,227
Fomento Econ-Ubd	Mexico	23,538,137
Grupo Aeroportua	Mexico	17,672,868

Largest losses

	Exchange	Currency	Price	▼%
Ecopetrol	Colombia	COP	2292	-4.82
Entel	Chile	CLP	3195	-4.34
BANCO DAVIVIENDA	Colombia	COP	21610	-4.17
Suramericana	Colombia	COP	36100	-3.71
Corficolombiana	Colombia	COP	10910	-3.45

Per Volume

	Exchange	Volume
Banco Santander	Chile	326,758,045
Corpanca	Chile	325,361,827
Banco de Chile	Chile	125,973,681
ENEL CHILE SA	Chile	52,138,202
Cemex Sab-Cpo	Mexico	32,400,906

MILA

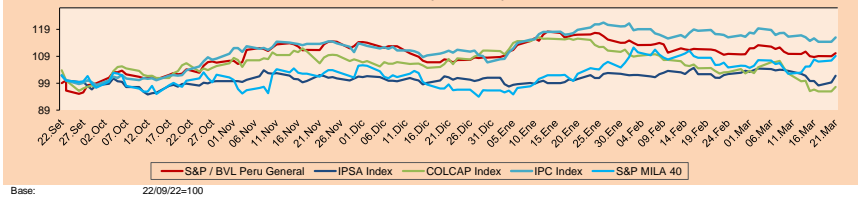
Peru: The LSE General index ended today's session with a negative result of -1.19%. The index maintains a positive cumulative annual trend of +0.28% in local currency and a positive cumulative trend of +1.29% in dollar-adjusted currency. With respect to the S&P/BVL Peru SEL it varied by -0.58% while the S&P/BVL LIMA 25 by -0.7%. The spot PEN reached S/ 3.7681. Headline: FED's interest rate path could affect the LSE.

Chile: The IPSA index ended the day with a positive return of +4.19%. The top gainers of the day were Technology Information (+1.02%) and Consumer Discretionary (+0.97%). The best performing stocks were SMU S.A (+3.32%) and ENELCHIL S.A (+2.1%). Headline: The Chilean peso closed higher against the dollar boosted by copper price increases.

Colombia: The COLCAP index ended the session with a negative return of -2.17%. The most performing sectors of the day were Energy (-1.52%) and Consumer Staples (-2.55%). The underperformers were ECOPETIL (-4.82%) and MINEROS (-4.22%). Headline: Expectations on inflation, savings capacity and labour market worsened in December, according to DANE.

Mexico: The IPC index closed the day in negative territory of +0.53%. The worst performing sectors of the day were Health Care (-0.29%) and Consumer Staples (-0.26%). The worst performing stocks were GRUMAB (-2.62%) and GENERA (-1.35%). Headline: Mexico's inflation slowdown brings respite for Banxico.

MILA: Stock Indices (6 months)

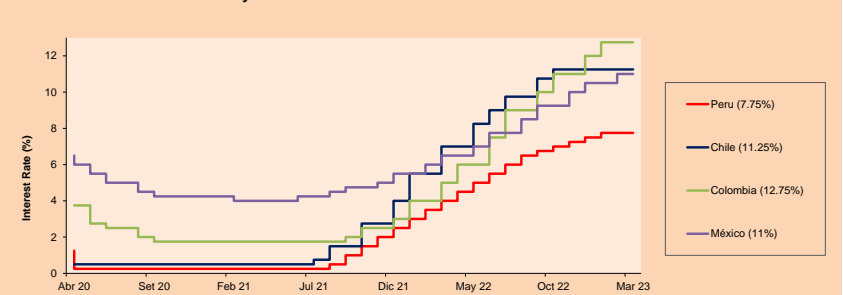


Base: 22/09/22=100
Source: Bloomberg

ETFs

	Curr.	Close	1D	5D	30 D	YTD	Exchange
▲ iShares MSCI All Peru Caped Index Fund	USD	29.09	0.24%	2.36%	-1.69%	1.46%	NYSE Arca
▲ iShares MSCI All Chile Caped Index Fund	USD	28.06	1.04%	3.28%	-0.67%	3.58%	Cboe BZX
Global X MSCI Colombia	USD						
▲ iShares MSCI Mexico Capped	USD	56.55	0.41%	1.14%	-1.53%	14.36%	NYSE Arca
▲ iShares MSCI Emerging Markets	USD	38.77	1.39%	2.46%	-1.05%	2.30%	NYSE Arca
▲ Vanguard FTSE Emerging Markets	USD	39.79	1.22%	2.18%	-1.17%	2.08%	NYSE Arca
▲ iShares Core MSCI Emerging Markets	USD	47.94	1.22%	2.28%	-1.03%	2.66%	NYSE Arca
▲ iShares JP Morgan Emerging Markets Bonds	USD	54.19	0.89%	2.35%	0.95%	2.15%	Cboe BZX
▲ Morgan Stanley Emerging Markets Domestic	USD	4.52	0.22%	1.12%	1.57%	2.73%	New York

MILA: Policy Rate



Source: Bloomberg

Capital Market Laboratory Coordinator: MS Javier Penny Pestana
Collaboration: Mariafe Urrutia, Nikolas Diaz, Nadia Contreras y Joseph Martinez
email: pulsohorsatil@ulima.edu.pe
facebook: www.facebook.com/pulsohorsatil

LIMA

Stocks

Ticker	Currency	Price	1D*	5D*	30D*	YTD*	Frequency	Volume (US\$)	Beta	Dividend Yield (%)	Price Earning	Market Cap. (M US\$)	Economic Sector*	Index Weight
▼ ALICORC1 PE**	S/.	6.41	-0.71%	0.01%	7.89%	-5.02%	100.00%	1,033,893	0.56	3.90	9.96	1,448.87	Industrial	3.53%
- BACKUSH1 PE**	S/.	26.00	0.00%	3.79%	8.33%	5.78%	75.00%	13,971	0.75	4.81	8.32	8,066.04	Industrial	0.82%
▼ BAP PE**	US\$	124.79	-1.66%	-1.86%	-3.29%	-7.73%	100.00%	49,926	1.35	3.21	-	9,923.30	Diverse	5.82%
▼ BVN PE**	US\$	8.13	-2.28%	2.65%	5.31%	8.54%	100.00%	556,225	1.74	0.86	-	2,237.81	Mining	5.88%
- CASAGRC1 PE**	S/.	8.20	0.00%	-2.38%	-2.84%	3.80%	65.00%	20	0.36	0.00	7.45	183.29	Agricultural	1.31%
▲ BBVAC1 PE**	S/.	1.71	0.59%	-0.58%	-0.58%	1.18%	95.00%	9,551	0.30	6.18	5.98	3,349.75	Finance	2.85%
- CORAREI1 PE**	S/.	1.25	0.00%	0.00%	1.63%	-10.71%	55.00%	9,887	0.56	12.13	4.05	545.12	Industrial	1.72%
▼ CPACASC1 PE**	S/.	4.04	-0.74%	-0.25%	-0.25%	2.28%	80.00%	8,571	0.42	10.40	9.85	492.35	Industrial	2.38%
▲ CIVERDEC1 PE**	US\$	28.50	1.24%	0.71%	-5.00%	-4.36%	80.00%	11,579	0.89	4.01	10.03	9,976.60	Mining	5.25%
▼ ENGEPEC1 PE**	S/.	3.85	-0.26%	-3.27%	5.48%	6.94%	80.00%	40,112	0.83	15.88	8.62	1,785.64	Public Services	1.44%
▲ ENDISPC1**	S/.	13.40	1.52%	0.00%	24.07%	88.73%	95.00%	308,930	0.90	1.93	17.84	2,270.60	Public Services	0.98%
- FERREYC1 PE**	S/.	2.15	0.00%	-2.27%	-4.44%	-3.59%	100.00%	70,269	0.55	12.08	4.30	539.75	Diverse	4.90%
- AENZAC1 PE**	S/.	0.65	0.00%	-1.52%	-17.72%	-21.69%	40.00%	24,841	0.00	0.00	-	206.46	Diverse	4.05%
▼ IFS PE**	US\$	22.70	-1.09%	3.32%	-1.30%	-5.02%	95.00%	34,663	0.94	7.71	5.95	2,619.99	Diverse	7.22%
▼ INRETC1 PE**	US\$	33.60	-1.18%	0.30%	-1.18%	1.79%	65.00%	62,873	0.51	2.05	18.32	3,653.90	Diverse	5.28%
- LUSURC1 PE**	S/.	13.80	0.00%	-1.43%	-4.89%	-9.21%	65.00%	6,419	0.00	8.31	10.51	1,783.18	Public Services	1.81%
- MINSUR1 PE**	S/.	3.45	0.00%	0.00%	-6.76%	-2.82%	95.00%	23,318	1.10	10.85	1.90	2,639.34	Mining	3.09%
- PML PE**	US\$	0.08	0.00%	14.29%	0.00%	-11.11%	20.00%	2,756	0.00	0.00	-	21.68	Mining	2.12%
▼ SCCO PE**	US\$	70.90	-3.01%	3.22%	-4.31%	15.15%	95.00%	15,970	1.46	4.94	19.54	54,812.91	Industrial	2.12%
- SIDERC1 PE**	S/.	1.72	0.00%	1.18%	2.38%	4.88%	80.00%	1,834	0.48	25.64	4.99	319.49	Mining	2.14%
- UNACEMC1 PE**	S/.	1.58	0.00%	0.00%	-8.14%	-12.22%	100.00%	2,611	0.96	5.70	-	762.28	Mining	2.93%
- VOLCABC1 PE**	S/.	0.47	0.00%	2.17%	-4.08%	-7.84%	100.00%	56,876	0.67	0.00	-	759.82	Industrial	3.00%
- BROCALC1 PE**	S/.	5.87	0.00%	0.00%	-4.24%	-4.08%	5.00%	15,888	0.00	0.00	-	253.11	Mining	5.90%
- RIMSEGC1 PE**	S/.	0.74	0.00%	-1.33%	0.00%	5.71%	5.00%	1,257	0.00	0.00	5.69	350.31	Finance	3.09%
- CORAREC1 PE**	US\$	2.05	0.00%	2.50%	5.13%	6.77%	30.00%	102,500	0.00	5.78	6.64	2,054.27	Mining	2.12%
- ENGIEC1 PE**	S/.	5.26	0.00%	0.00%	-1.50%	6.26%	20.00%	274	0.00	0.00	12.88	839.38	Diversas	2.12%

Quantity of shares: 26
 Source: Bloomberg, Economatika
 * Bloomberg Industry Classification System
 ** PER is used in the stock market and original currency of the instrument
 *Legend: Variation 1D: 1 Day; 5D: 5 Days, 1M: 1 Month; YTD: Var.% 12/31/21 to date

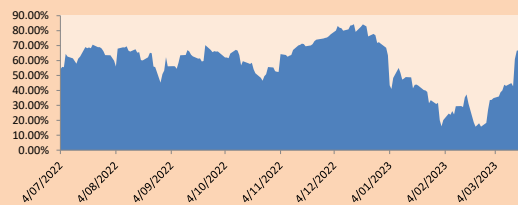
Sectorial Indices

	Close	1D*	5D*	30D*	YTD*	Beta
▼ S&P/BVLMining	433.33	-2.37%	2.26%	-4.18%	10.16%	1.42
▼ S&P/BVLConsumer	1,230.14	-1.26%	0.04%	-0.41%	-0.28%	0.29
▼ S&P/BVLIndustrials	231.74	-0.11%	-0.52%	-4.52%	-5.42%	0.30
▼ S&P/BVLFinancials	877.76	-1.58%	-1.88%	-4.40%	-8.10%	1.41
▼ S&P/BVLConstruction	226.84	-0.16%	0.31%	-4.56%	-6.25%	0.20
▲ S&P/BVLPublicSvcs	993.65	0.51%	-0.96%	9.74%	28.35%	0.25
▲ S&P/BVLElectricUtil	970.05	0.51%	-0.96%	9.74%	28.35%	0.25

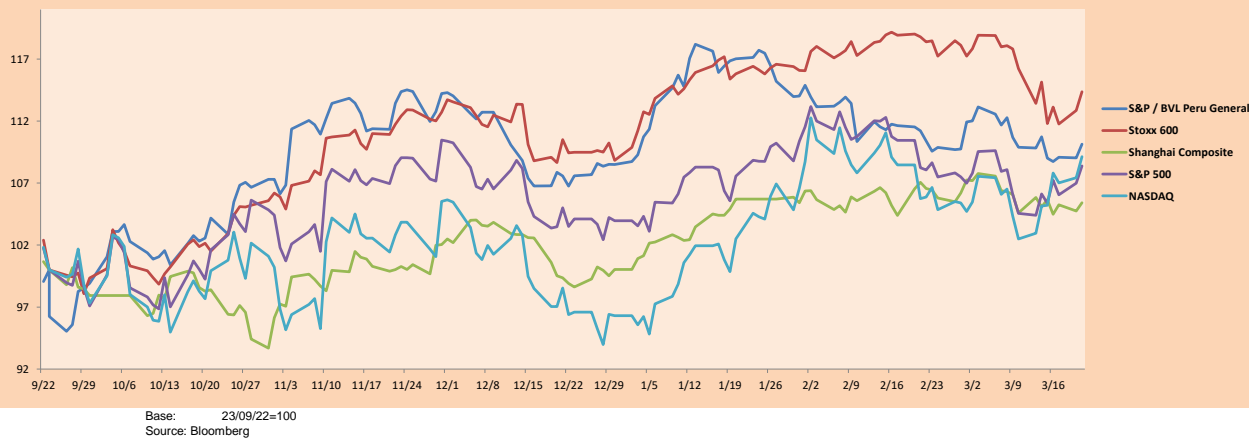
S&P/BVLConstructionTRPEN

*Legend: Variation 1D: 1 Day; 5D: 5 Days, 1M: 1 Month; YTD: Var.% 12/31/21 to date

Correlation Graph of Returns of Mining Index against Metallic Index of London (3 months)



Indices (6 months)



Base: 23/09/22=100
 Source: Bloomberg

Capital Market Laboratory Coordinator: MS Javier Penny Pestana
 Collaboration: Mariafe Urrutia, Nikolas Diaz, Nadia Contreras y Joseph Martinez
 email: pulsobursatil@ulima.edu.pe
 facebook: www.facebook.com/pulsobursatil.ul

The content of this document is just for informational purposes. The information and opinions expressed should not be consider as recommendations for future decisions. Under any circumstances, the Capital Market Laboratory of University of Lima will be responsible for the use of the statements in this document.

SOVEREIGN RATING

RISK RATINGS			
Moody's	S&P	Fitch	
Aaa	AAA	AAA	Prime
Aa1	AA+	AA+	High credit quality
Aa2	AA	AA	
Aa3	AA-	AA-	
A1	A+	A+	Medium-high grade, with low credit risk
A2	A	A	
A3	A-	A-	
Baa1	BBB+	BBB+	Moderate Credit Risk
Baa2	BBB	BBB	
Baa3	BBB-	BBB-	
Ba1	BB+	BB+	It has speculative elements and it is subject to substantial credit risk
Ba2	BB	BB	
Ba3	BB-	BB-	
B1	B+	B+	It is considered speculative and it has high credit risk
B2	B	B	
B3	B-	B-	
Caa1	CCC+	CCC	Bad credit conditions and it is subject to high credit risk
Caa2	CCC		
Caa3	CCC-		
Ca	CC	DDD	Very close to default or in default
	C		
C	D		

Source: Bloomberg

Latin America Credit Rating			
Clasificadora de riesgo			
Country	Moody's	Fitch	S&P
Peru	Baa1	BBB	BBB
México	Ba2	BB-	BB-
Venezuela	C	WD	NR
Brazil	Ba2	BB-	BB-
Colombia	Baa2	BB+	BB+
Chile	A2	A-	A
Argentina	Ca	WD	CCC+
Panama	Baa2	BBB-	BBB

Source: Bloomberg

Riesgo País Latinoamérica (pbs)



	Feb-22	Mar-22	Abr-22	May-22	Jun-22	Jul-22	Ago-22	Set-22	Oct-22	Nov-22	Dic-22	Ene-23	Feb-23
Perú	197.75	200.74	186.67	217.55	213.55	235.43	211.00	225.27	242.59	203.41	195.50	207.05	192.30
Brasil	313.30	303.26	274.06	300.64	322.82	345.48	297.70	286.56	281.30	264.90	258.64	258.64	246.10
Chile	173.90	178.91	159.44	186.32	179.32	200.10	186.09	194.05	200.69	167.97	147.82	150.95	139.45
Colombia	371.45	364.48	340.78	383.05	388.73	437.86	400.26	423.83	470.84	416.81	381.77	370.18	384.35
México	367.35	373.00	360.00	398.59	428.41	464.10	420.43	443.77	447.72	399.31	389.00	372.32	358.55

Capital Market Laboratory Coordinator: IMS Javier Penny Pestana
Collaboration: Mariáfe Urrutia, Nikolas Díaz, Nadia Contreras y Joseph Martínez
email: pulsobursatil@ulima.edu.pe
facebook: www.facebook.com/pulsobursatil.ul

The content of this document is just for informational purposes. The information and opinions expressed should not be consider as recommendations for future decisions. Under any circumstances, the Capital Market Laboratory of University of Lima will be responsible for the use of the statements in this document.