

PULSO BURSÁTIL

FACULTAD DE CIENCIAS EMPRESARIALES Y ECONÓMICAS
CARRERA DE ECONOMÍA
LABORATORIO DE MERCADO DE CAPITALES

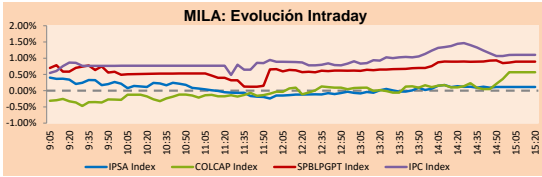


MILA

Lima, April 10, 2023

Main Indexes	Close	1 D	5 D	1 M	YTD	Cap. Burs. (US\$ bill)
▲ IPSA (Chile)	5,281.48	0.14%	-0.81%	-2.26%	0.37%	114.65
▲ IGPA (Chile)	27,218.09	0.11%	-1.26%	-3.28%	-1.41%	140.93
▼ COLCAP (Colombia)	877.62	-0.08%	1.07%	2.11%	-4.92%	3.28
▲ COLCAP (Colombia)	1,200.34	0.57%	4.71%	-2.86%	-6.67%	58.32
S&P/BVL (Perú)*	22,111.82	0.89%	0.92%	2.35%	3.66%	105.25
▼ S&P/BVL SEL (Perú)	567.31	-0.32%	0.38%	1.52%	1.99%	89.73
S&P/BVL LIMA 25	30,806.65	0.98%	2.59%	3.36%	2.29%	104.70
▲ IPC (México)	54,074.75	1.08%	-0.23%	0.28%	11.58%	384.02
▼ S&P MILA 40	474.51	-0.08%	-0.72%	-1.42%	3.27%	6,975.89

*Legend: Variation 1D: 1 day; 5D: 5 days; 1M: 1 Month; YTD: Var% 12/31/21 to date

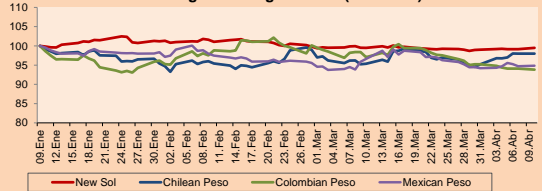


Source: Bloomberg

Currency	Price	1D*	5D*	30 D*	YTD*
▲ Sol (PEN)	3,781.11	0.32%	0.31%	-0.01%	-0.66%
▲ Chilean Peso (CLP)	818.75	0.01%	1.22%	2.74%	-3.80%
▼ Colombian Peso (COP)	4,556.34	-0.27%	-1.05%	-3.33%	-6.10%
▲ Mexican Peso (MXN)	18.17	0.15%	0.7%	-1.83%	-6.84%

*Legend: Variation 1D: 1 day; 5D: 5 days; 1M: 1 Month; YTD: Var% 12/31/21 to date

MILA: Foreign Exchange Indices (3 months)

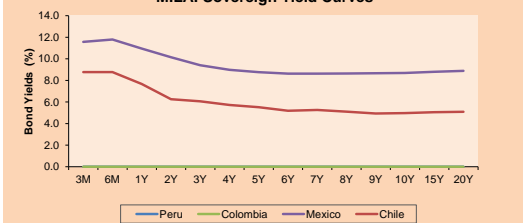


Base: 09/01/23=100
Source: Bloomberg

Fixed Income

	Currency	Price	Bid Yield (%)	Ask Yield (%)	Duration
PERU 7.35 07/21/25	USD	105.906	4.69	4.48	2.06
PERU 4.125 08/25/27	USD	98.544	4.55	4.44	3.91
PERU 8.75 11/21/33	USD	127.281	5.40	5.29	7.15
PERU 6.55 03/14/37	USD	110.331	5.52	5.44	8.84
PERU 5.625 11/18/2050	USD	102.096	5.50	5.45	13.77
CHILE 2.45 01/31/31	USD	87.645	4.38	4.28	6.86
CHILE 3.125 01/21/26	USD	97.353	4.21	4.08	2.60
CHILE 3.625 10/30/42	USD	80.916	5.23	5.15	13.03
COLOM 11.85 03/09/28	USD	121.047	6.80	6.68	3.79
COLOM 10.375 01/28/33	USD	115.733	8.17	7.87	6.24
COLOM 7.375 09/18/37	USD	95.52	7.95	7.85	8.63
COLOM 6.125 01/18/41	USD	81.219	8.19	8.10	9.79
MEX 4 10/02/23	USD	81.219	8.188	8.095	9.79
MEX5.55 01/45	USD	95.047	5.99	5.93	12.23

MILA: Sovereign Yield Curves



Source: Bloomberg

Equity

Largest gains	Exchange	Currency	Price	▲%
PARQUE ARAUCO	Chile	CLP	1126.00	4.42
SURAMERICANA	Colombia	COP	33990.00	3.00
ENEL CHILE SA	Chile	CLP	39.59	2.86
CENCOSUD SHOPPIN	Chile	CLP	1270.00	2.83
AGUAS ANDINAS-A	Chile	CLP	215.62	2.64

Per Turnover

	Exchange	Amount (US\$)
AMERICA MOVIL-L	Mexico	47,939,677
GRUPO F BANORT-O	Mexico	39,431,907
SQUIMMICH-B	Chile	36,763,586
WALMART DE MEXIC	Mexico	34,189,824
FOMENTO ECON-UBD	Mexico	25,719,240

Largest losses	Exchange	Currency	Price	▼%
PROMOTORA Y OPEI	Mexico	MXN	178.03	-3.05
GRUPO ENERGIA BC	Colombia	COP	1527	-3.05
CERVEZAS	Chile	CLP	6390	-2.72
CONCHATORO	Chile	CLP	1057.9	-1.54
CMPC	Chile	CLP	1360	-1.45

Per Volume

	Exchange	Volume
ITAU CORPBANCA	Chile	614,292,897
BANCO SANTANDER	Chile	65,139,492
BANCO DE CHILE	Chile	53,113,722
AMERICA MOVIL-L	Mexico	42,675,504
ENEL CHILE SA	Mexico	39,170,260

MILA

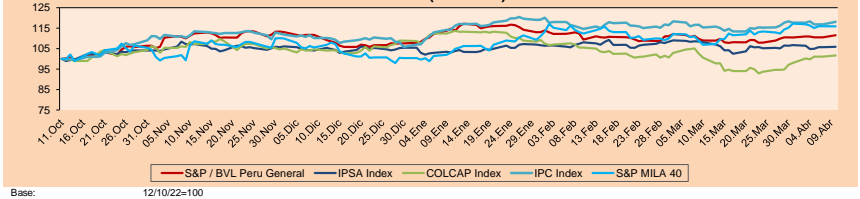
Peru: The BVL General Index ended today's session with a positive result of +0.89%. The index maintains a positive cumulative annual trend of +3.66% in local currency and a positive cumulative trend of +4.35% in dollar-adjusted currency. Regarding the S&P/BVL Peru SEL, it varied by +0.64% while the S&P/BVL LIMA 25 by +0.98%. The spot PEN reached S/3.7811. Headline: ADEX: Exports register a 12% drop in February.

Chile: The IPSA index ended the day with a positive return of +0.14%. The most benefited sectors of the day were Utilities (+1.74%) and Consumer Staples (+0.53%). The best performing stocks were Enel Americas (+3.63%) and Ripley Corporación SA (+1.52%). Headline: Jorge Hermann and the new tax debate: "The government has a tax revolution in the pipeline".

Colombia: The COLCAP index ended the session with a positive return of +0.57%. The most benefited sectors of the day were Utilities (+1.83%) and Consumer Staples (+1.79%). The best performing stocks were Empresa de Energía de Bogotá SA (+4.92%) and Cementos Argos SA (+2.59%). Headline: Colombia, among the countries with the lowest cost of living in Latin America.

Mexico: The IPC index closed the day in positive territory, +1.08%. The sectors that benefited the most during the day were Materials (+3.06%) and Industrials (+1.87%). The best performing stocks were Grupo Carso SAB de CV (+5.74%) and Grupo Televisa SA (+5.57%). Headline: Formal jobs "explode" in 2023; there are 423,384 jobs.

MILA: Stock Indices (6 months)

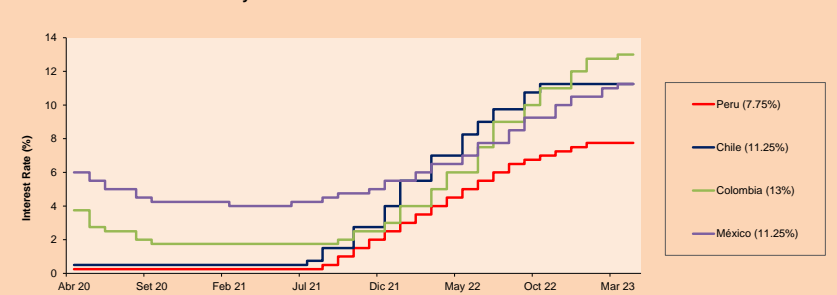


Base: 12/10/22=100
Source: Bloomberg

ETFs

	Curr.	Close	1D	5D	30 D	YTD	Exchange
▼ iShares MSCI All Peru Caped Index Fund	USD	30.4	-0.33%	-0.65%	4.29%	6.03%	NYSE Arca
▲ iShares MSCI All Chile Caped Index Fund	USD	27.57	0.25%	-2.06%	-4.40%	1.77%	Cboe BZX
Global X MSCI Colombia	USD						
▲ iShares MSCI Mexico Capped	USD	59.09	0.78%	-0.30%	3.70%	19.49%	NYSE Arca
▲ iShares MSCI Emerging Markets	USD	39.43	0.10%	-0.28%	4.20%	4.04%	NYSE Arca
▼ Vanguard FTSE Emerging Markets	USD	40.4	-0.22%	-0.42%	3.27%	3.64%	NYSE Arca
▲ iShares Core MSCI Emerging Markets	USD	48.86	0.21%	-0.14%	3.98%	4.63%	NYSE Arca
▲ iShares JP Morgan Emerging Markets Bonds	USD	54.84	0.02%	0.15%	3.49%	3.37%	Cboe BZX
▲ Morgan Stanley Emerging Markets Domestic	USD	4.6	1.32%	0.66%	1.55%	4.55%	New York

MILA: Policy Rate



Source: Bloomberg

Capital Market Laboratory Coordinator: MS Javier Penny Pestana
Collaboration: Nikolas Diaz, Nadia Contreras, Joseph Martinez y Marcelo Cossar
email: pulsohorsatil@ulima.edu.pe
facebook: www.facebook.com/pulsohorsatil

The content of this document is just for informational purposes. The information and opinions expressed should not be considered as recommendations for future decisions. Under any circumstances, the Capital Market Laboratory of University of Lima will be responsible for the use of the statements in this document.

PULSO BURSÁTIL

FACULTAD DE CIENCIAS EMPRESARIALES Y ECONÓMICAS
CARRERA DE ECONOMÍA
LABORATORIO DE MERCADO DE CAPITALES

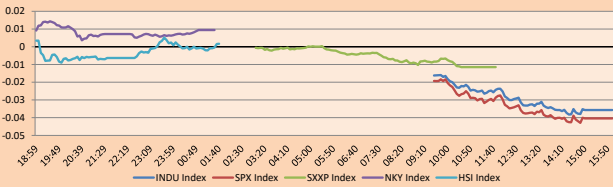


WORLD

Main Indices	Close	1 D*	5 D*	1 M*	YTD*	Market Cap. (US\$ Mill.)
▲ Dow Jones (USA)	33,586.52	0.30%	0.94%	2.22%	1.33%	10,609,248
▲ Standard & Poor's 500 (EEUU)	4,109.11	0.10%	0.00%	3.08%	7.02%	35,772,207
▲ NASDAQ Composite (USA)	12,084.36	-0.03%	-1.13%	4.80%	15.46%	20,421,964
▲ Stoxx EUROPE 600 (Europe)	458.94	0.51%	0.90%	-0.36%	8.01%	11,559,186
▲ DAX (Germany)	15,597.89	0.50%	0.49%	0.25%	12.02%	1,393,030
▲ FTSE 100 (United Kingdom)	7,741.56	1.03%	1.59%	-2.25%	3.89%	1,701,061
▲ CAC 40 (France)	7,324.75	0.12%	0.85%	-0.20%	13.15%	2,218,676
▲ IBEX 35 (Spain)	9,312.30	0.62%	1.14%	-1.05%	13.16%	557,682
▼ MSCI AC Asia Pacific Index	160.86	-0.29%	-1.23%	1.86%	3.29%	21,717,777
▲ HANG SENG (Hong Kong)	20,331.20	0.29%	0.69%	-0.99%	2.78%	3,355,776
▼ SHANGHAI SE Comp. (China)	3,315.36	-0.37%	1.30%	2.64%	7.32%	7,003,145
▲ NIKKEI 225 (Japan)	27,633.66	0.42%	-1.97%	-1.81%	5.90%	3,706,514
▼ S&P / ASX 200 (Australia)	7,218.98	-0.25%	1.36%	-1.98%	2.56%	1,612,791
▲ KOSPI (South Korea)	2,512.08	0.87%	1.61%	4.91%	12.33%	1,455,334

*Legend: Variación 1D: 1 Day; 5D: 5 Days; 1M: 1 Month; YTD: Var.% 12/31/21 to date

Mercado Evolución Intraday (var %)

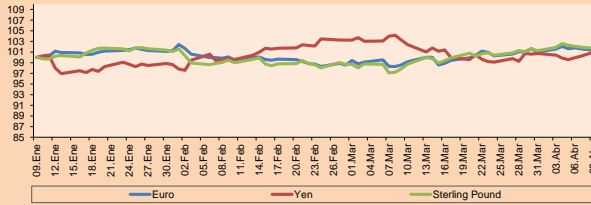


Source: Bloomberg

Currency	Price	1 D*	5 D*	1 M*	YTD*
▼ Euro	1.0859	-0.42%	-0.37%	2.03%	1.44%
▲ Yen	133.6100	1.10%	0.87%	-1.05%	1.90%
▼ Sterling Pound	1.2382	-0.29%	-0.26%	2.93%	2.47%
▲ Yuan	6.8847	0.24%	0.10%	-0.47%	-0.20%
- Hong Kong Dollar	7.8498	0.00%	0.00%	0.04%	0.62%
▲ Brazilian Real	5.0670	0.19%	0.04%	-2.83%	-4.04%
▲ Argentine Peso	212.9481	0.82%	1.23%	6.08%	20.22%

*Legend: Variación 1D: 1 Day; 5D: 5 Days; 1M: 1 Month; YTD: Var.% 12/31/21 to date

Foreign Exchange Indices (3 months)

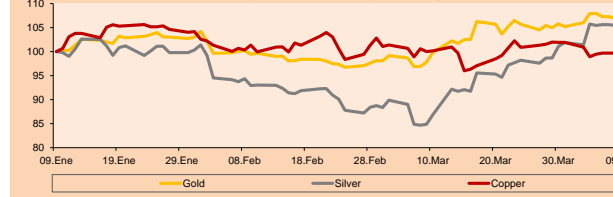


Base: 09/01/23=100
Source: Bloomberg

Commodities	Close	1 D*	5 D*	1 M*	YTD*
▼ Oro (US\$ Oz. T) (LME)	1,991.48	-0.82%	0.34%	6.60%	9.18%
▼ Plata (US\$ Oz. T) (LME)	24.87	-0.42%	3.70%	21.10%	3.83%
▼ Cobre (US\$ TM) (LME)	8,806.75	0.00%	-1.24%	-0.45%	5.28%
▼ Zinc (US\$ TM) (LME)	2,795.49	0.00%	-4.38%	-5.39%	-6.92%
▼ Petróleo WTI (US\$ Barril) (NYM)	79.74	-1.19%	-0.85%	3.86%	-0.89%
- España (US\$ TM) (LME)	24,295.00	0.00%	-6.92%	6.88%	-1.86%
- Plomo (US\$ TM) (LME)	2,103.74	0.00%	-0.70%	1.36%	-9.96%
▼ Azúcar #11 (US\$ Libra) (NYB-ICE)	23.07	-0.47%	5.01%	11.99%	28.31%
▼ Cacao (US\$ TM) (NYB-ICE)	2,861.00	-0.31%	0.92%	5.53%	10.04%
▼ Café Arábica (US\$ TM) (NYB-ICE)	180.70	-0.55%	3.11%	2.03%	8.46%

*Legend: Variación 1D: 1 Día; 5D: 5 Días; 1M: 1 Mes; YTD: Var.% 31/12/21 a la fecha

Principal Metals Index (3 months)



Base: 09/01/23=100
Source: Bloomberg

Equity

Germany (Stocks from DAX Index)

Largest gains	Curr.	Price	▲%	Exchange	Largest losses	Curr.	Price	▼%	Exchange
IFX GY	EUR	95.48	3.26	Xetra	BNR GY	EUR	62.7	0.06	Xetra
BAYN GY	EUR	163.13	2.05	Xetra	DB1 GY	EUR	823.76	-0.60	Xetra
ADS GY	EUR	275.79	2.00	Xetra	MTX GY	EUR	9.87	1.44	Xetra
P911 GY	EUR	25.07	1.33	Xetra	DTG GY	EUR	135.1	1.89	Xetra

Europe (Stocks from STOXX EUROPE 600)

Largest gains	Curr.	Price	▲%	Exchange	Largest losses	Curr.	Price	▼%	Exchange
ANDR AV	EUR	59.5	-0.83	Vienna	HFG GY	EUR	22.36	2.43	Xetra
RF FP	EUR	65.3	0.62	EN Paris	ADM LN	Gbp	2228	4.50	Londres
HSX LN	Gbp	1136	1.61	Londree	HO FP	EUR	140.3	2.67	EN Paris
ELE SQ	EUR	20.35	1.14	Soc.Bol SIBE	TKWY NA	EUR	15.12	-2.56	EN Amsterdam

Global Overview:

United States:

The US market closed with mixed performances. The DOW JONES closed the day with gains, against a backdrop of employment data released showing a decrease in fears that the economy is headed for a recession. However, the data supports a possible 25 basis point hike by the Fed as it lowered the unemployment rate to 3.5%. The S&P 500 index also ended with bullish returns, where the report on consumer inflation expectations for the next year rose to 4.7%, recovering from a nearly 2-year low. Finally, the NASDAQ index ended the day lower. Where concerns, after the unexpected collapse of Silicon Valley Bank, increased and caused a tightening of credit conditions among US banks. Where the highest returns were PlxPharma Inc. with 245.67%, followed by GlucoTrack Inc. with 168.91% and finally Agrify Corp. with 95.59%. Thus, DOW JONES +0.30%, S&P 500 +0.10% and NASDAQ -0.03% ended the day with mixed results.

Europe:

The main European indices ended the session with positive performances. The pan-European STOXX 600 index closed higher, with M3 money supply up 2.9% from a year earlier and household borrowing up 3.2%. These data represent a moderation from the previous month. The U.K. market, reflected in the FTSE 100 closed with a +1.03% return as investors believe that major central banks will continue to raise interest rates to curb inflation. The Bank of England is expected to raise rates by 25 basis points as UK inflation rose to 10.4% in February. Similarly, the German market, reflected in the DAX index closed in positive territory. The German bond yield stabilized at 2.2%, after Friday's data showed that the U.S. labor market remained tight last week, strengthened the case for further rate hikes by the Federal Reserve. The French market closed positive. Among its top performers were Thales (+2.67%), BNP Paribas (+2.51%) and Unibail-Rodamco-Westfield (+2.37%). Thus, FTSE 100 +1.03%; CAC 40 +0.12%; DAX +0.50%; STOXX 600 +0.51% ended at positive levels.

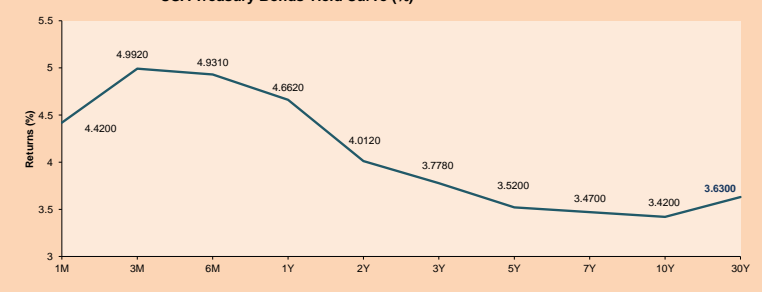
Asia:

The main Asian indices closed with mixed performances, in a context where Beijing carried out military exercises simulating precision strikes against Taiwan a day after Taiwan's president, Tsai Ing-wen, returned from a brief visit to the United States. The Chinese market ended lower, where the main declines were in the technology sector led by 300 Security Technology (+10%), Kunlun Tech (+15%), East Money Information (-3%), Flytek (-10%) and Unigroup Guoxin (-5%). On the other hand, the Hong Kong index closed with gains, supported by the news that Chinese and US leaders began a series of meetings in Beijing today after years of strained relations. Additionally, semiconductor manufacturing was the best performer of the day, jumping nearly 7.5%. The South Korean market ended on a positive performance, bolstered by the consumer price index rising 4.2% in March 2023 from a year earlier, slowing from February's 4.8% and reaching the lowest level in a year. The Japanese market closed in positive territory as consumer confidence rose by a 10-month high in March. In addition, the new governor of the Bank of Japan, Haruhiko Kuroda, is expected to maintain the bank's dovish stance. Consumer-related stocks led the advance with strong gains in Nippon Yusen (3.5%), Mitsui OSK (2.5%), Kawasaki Kisen (2.1%) and Nintendo (4%). The Australian market ended with losses, pressured by the latest U.S. payrolls data, which pointed to a tight labor market and raised bets on another Fed rate hike in May. On the front, the Reserve Bank of Australia kept the cash rate unchanged at 3.6% in April 2023 after raising it for ten consecutive meetings. Thus, NIKKEI +0.42%; HANG SENG +0.28%; CSI 300 -0.45%; S&P/ASX 200 -0.25%; KOSPI -0.87%; SHANGHAI COMPOSITE -0.37% ended with mixed performances.

ETFs

ETFs	Curr.	Close	1D	5D	30 D	YTD	Exchange
SPDR S&P 500 ETF TRUST	USD	409.61	0.10%	-0.33%	6.14%	7.11%	NYSE Arca
ISHARES MSCI EMERGING MARKET	USD	39.43	0.10%	-0.28%	4.20%	4.04%	NYSE Arca
ISHARES IBOXX HIGH YLD CORP	USD	74.77	-0.09%	-0.51%	1.81%	1.55%	NYSE Arca
FINANCIAL SELECT SECTOR SPDR	USD	32.06	0.22%	-0.47%	-2.64%	-6.26%	NYSE Arca
VANECK GOLD MINERS ETF	USD	33.99	-1.28%	2.75%	24.96%	18.60%	NYSE Arca
ISHARES RUSSELL 2000 ETF	USD	175.75	1.07%	-1.53%	-0.24%	0.80%	NYSE Arca
SPDR GOLD SHARES	USD	185.11	-0.74%	0.31%	6.46%	9.12%	NYSE Arca
ISHARES 20+ YEAR TREASURY BO	USD	106.78	-1.61%	0.17%	1.13%	7.25%	NASDAQ GM
INVESCO QQQ TRUST SERIES 1	USD	317.87	-0.06%	-0.71%	10.16%	19.37%	NASDAQ GM
ISHARES BIOTECHNOLOGY ETF	USD	130.36	-0.53%	0.45%	6.88%	-0.71%	NASDAQ GM
ENERGY SELECT SECTOR SPDR	USD	86.66	0.80%	-1.06%	3.67%	-2.07%	NYSE Arca
PROSHARES ULTRA VIX S1 FLUTUR	USD	4.34	+1.38%	-2.69%	-27.73%	-36.73%	Cboe BZX
UNITED STATES OIL FUND LP	USD	69.76	-0.71%	-0.73%	3.90%	-0.50%	NYSE Arca
ISHARES MSCI BRAZIL ETF	USD	27.35	0.96%	0.22%	1.22%	-2.22%	NYSE Arca
SPDR S&P OIL & GAS EXP & PR	USD	133.00	2.15%	-0.66%	3.87%	-2.12%	NYSE Arca
UTILITIES SELECT SECTOR SPDR	USD	69.67	-0.20%	3.63%	8.15%	-1.18%	NYSE Arca
ISHARES US REAL ESTATE ETF	USD	84.63	0.49%	0.47%	3.08%	0.52%	NYSE Arca
SPDR S&P BIOTECH ETF	USD	76.15	-0.94%	-1.18%	0.65%	-8.25%	NYSE Arca
ISHARES IBOXX INVESTMENT GRA	USD	109.82	-0.48%	-0.10%	2.81%	4.16%	NYSE Arca
ISHARES JIP MORGAN US EMERGI	USD	85.64	-0.52%	-0.70%	0.75%	1.24%	NASDAQ GM
REAL ESTATE SELECT SECT SPDR	USD	37.29	0.51%	0.70%	3.30%	0.97%	NYSE Arca
ISHARES CHINA LARGE-CAP ETF	USD	29.19	-0.34%	-0.71%	6.65%	3.14%	NYSE Arca
CONSUMER STAPLES SPDR	USD	75.36	0.00%	0.35%	5.98%	1.09%	NYSE Arca
VANECK JUNIOR GOLD MINERS	USD	40.95	-0.99%	1.29%	24.54%	14.87%	NYSE Arca
SPDR BLOOMBERG HIGH YIELD BO	USD	91.71	-0.20%	-0.63%	1.87%	1.90%	NYSE Arca
VANGUARD REAL ESTATE ETF	USD	82.77	0.46%	0.47%	2.43%	0.35%	NYSE Arca
GRAYSCALE BITCOIN TRUST BTC	USD	17.14	5.74%	6.79%	52.63%	106.76%	OTC US

USA Treasury Bonds Yield Curve (%)



Source: Bloomberg

Capital Market Laboratory Coordinator: MS Javier Penny Pestana
Collaboration: Nikolas Diaz, Nadia Contreras, Joseph Martinez y Marcello Cossar
email: pulso@pulsobursatil@ulima.edu.pe
facebook: www.facebook.com/pulsobursatil.ul

LIMA

Stocks

Ticker	Currency	Price	1D*	5D*	30D*	YTD*	Frequency	Volume (US\$)	Beta	Dividend Yield (%)	Price Earning	Market Cap. (M US\$)	Economic Sector*	Index Weight
▼ ALICORC1 PE**	S/.	6.50	-0.08%	1.07%	2.11%	-4.92%	100.00%	14,632	0.60	3.85	10.11	1,464.99	Industrial	3.53%
- ATACOCB1 PE**	S/.	0.07	0.00%	0.00%	0.00%	0.00%	5.56%	275	0.00	0.00	-	17.99	Mining	1.02%
▲ BACKUSH1 PE**	S/.	26.25	0.57%	0.96%	4.79%	6.79%	83.33%	30,970	0.74	4.76	8.40	8,702.86	Industrial	0.82%
▼ BAP PE**	US\$	128.82	-0.59%	-1.55%	0.25%	-4.75%	100.00%	2,877,856	1.32	3.11	-	10,243.77	Diverse	5.82%
▼ BVN PE**	US\$	8.05	-2.19%	-3.01%	1.26%	7.48%	100.00%	105,423	1.67	0.87	-	2,215.82	Mining	5.88%
- CASAGRC1 PE**	S/.	9.30	0.00%	2.09%	8.14%	17.72%	72.22%	2,353	0.29	0.00	8.45	207.18	Agricultural	1.31%
▼ BBVAC1 PE**	S/.	1.79	-0.56%	0.56%	5.92%	5.92%	94.44%	7,686	0.29	5.90	7.05	3,494.78	Finance	2.85%
▲ CORAREH1 PE**	S/.	1.29	0.78%	2.38%	1.57%	-7.86%	77.78%	13,748	0.64	11.76	4.18	545.23	Industrial	1.72%
▼ CPACASC1 PE**	S/.	3.95	-1.25%	-1.25%	-2.23%	0.00%	88.89%	3,190,080	0.40	10.63	9.63	480.09	Industrial	2.38%
- CVERDEC1 PE**	US\$	30.50	0.00%	1.67%	7.77%	2.35%	100.00%	7,483	0.81	3.75	10.74	10,676.71	Mining	5.25%
▲ ENGEPEC1 PE**	S/.	4.08	4.62%	8.51%	2.00%	13.33%	94.44%	72,489	0.83	14.98	9.14	1,886.01	Public Services	1.44%
▲ ENDISPC1**	S/.	18.00	31.58%	32.84%	33.33%	153.52%	94.44%	7,415,080	0.90	1.44	23.97	3,039.90	Public Services	0.98%
- FERREYC1 PE**	S/.	2.17	0.00%	0.93%	-1.36%	-2.69%	100.00%	495,825	0.49	11.97	4.88	542.95	Diverse	4.90%
- AENZAC1 PE**	S/.	0.64	0.00%	-3.03%	-4.48%	-22.89%	38.89%	1,693	-	0.00	-	202.60	Diverse	4.05%
▼ IFS PE**	US\$	22.91	-0.39%	-1.38%	2.32%	-4.14%	100.00%	53,036	1.00	7.64	6.00	2,644.23	Diverse	7.22%
- INRETC1 PE**	US\$	33.30	0.00%	0.00%	-3.48%	0.88%	61.11%	64,602	0.50	2.07	18.14	3,621.27	Diverse	5.28%
- LUSURC1 PE**	S/.	14.50	0.00%	0.00%	0.00%	-4.61%	72.22%	7,861	0.00	7.91	11.04	1,867.39	Public Services	1.81%
- MINSURR1 PE**	S/.	3.90	0.00%	2.63%	14.71%	9.86%	94.44%	8,999	1.09	9.60	2.15	2,973.66	Mining	3.09%
- PML PE**	US\$	0.09	0.00%	0.00%	12.50%	0.00%	38.89%	3,220	-	0.00	-	24.32	Mining	2.12%
- SCCO PE**	US\$	73.60	0.00%	-4.42%	1.39%	19.54%	83.33%	702,644	1.56	0.00	20.28	56,900.28	Industrial	2.12%
▼ SIDERC1 PE**	S/.	1.51	-2.58%	-1.95%	-12.21%	-7.93%	83.33%	16,816	0.44	29.20	4.38	279.55	Mining	2.14%
▼ SIDERC1 PE**	US\$	1.51	-2.58%	-1.95%	-12.21%	-7.93%	0.00%	63,584	-	0.00	-	0.00	Industrial	1.43%
▲ UNACEMC1 PE**	S/.	1.60	1.91%	3.90%	1.27%	-11.11%	94.44%	4,057	0.96	5.63	-	769.35	Mining	2.93%
▲ VOLCABC1 PE**	S/.	0.49	2.08%	2.08%	6.52%	-3.92%	94.44%	128,926	0.87	0.00	-	879.50	Industrial	3.00%
- BROCALC1 PE**	S/.	5.20	0.00%	0.00%	-15.17%	-15.03%	22.22%	1,714	0.00	0.00	-	221.06	Mining	5.90%
▼ RIMSEGC1 PE**	S/.	0.72	-1.37%	-4.00%	0.00%	2.86%	22.22%	1,760	0.00	0.00	5.53	339.71	Finance	3.09%
- CORAREC1 PE**	US\$	2.05	0.00%	0.00%	2.50%	6.77%	38.89%	3,075	0.00	0.00	6.64	2,061.57	Mining	2.12%
▲ ENGIEC1 PE**	S/.	5.60	4.67%	4.67%	6.46%	13.13%	33.33%	61,220	-	3.82	13.73	890.66	Diversas	2.12%
- GBVLAC1 PE**	S/.	2.60	0.00%	0.00%	0.00%	0.00%	16.67%	12,099	0.00	0.00	24.94	125.21	Diversas	2.14%

Quantity of shares: 29
 Source: Bloomberg, Economática
 * Bloomberg Industry Classification System
 ** PER is used in the stock market and original currency of the instrument
 *Legend: Variation 1D: 1 Day; 5D: 5 Days, 1M: 1 Month; YTD: Var.% 12/31/21 to date

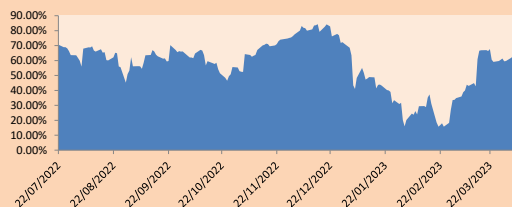
Sectorial Indices

	Close	1D*	5D*	30D*	YTD*	Beta
▼ S&P/BVLMining	448.80	-0.03%	-2.93%	2.23%	14.09%	1.55
▲ S&P/BVLConsumer	1,239.82	-0.04%	0.82%	0.05%	0.51%	0.32
▲ S&P/BVLIndustrials	231.74	0.27%	0.85%	-0.69%	-5.42%	0.19
▼ S&P/BVLFinancials	907.76	-0.25%	-1.19%	0.60%	-4.96%	1.39
▲ S&P/BVLConstruction	225.86	0.40%	0.81%	-0.37%	-6.66%	0.17
▲ S&P/BVLPublicSvcs	1,164.35	15.18%	16.81%	15.55%	50.40%	0.40
▲ S&P/BVLElectricUtil	1,136.70	15.18%	16.81%	15.55%	50.40%	0.40

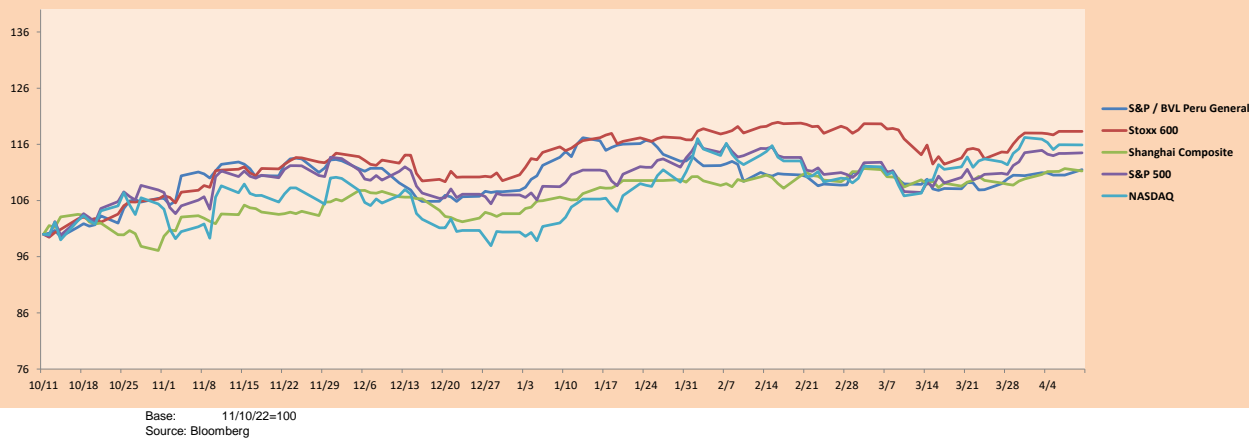
S&P/BVLConstructionTRPEN

*Legend: Variation 1D: 1 Day; 5D: 5 Days, 1M: 1 Month; YTD: Var.% 12/31/21 to date

Correlation Graph of Returns of Mining Index against Metallic Index of London (3 months)



Indices (6 months)



Base: 11/10/22=100
 Source: Bloomberg

Capital Market Laboratory Coordinator: MS Javier Penny Pestana
 Collaboration: Nikolas Díaz, Nadia Contreras, Joseph Martínez y Marcelo Cossar
 email: pulsobursatil@ulima.edu.pe
 facebook: www.facebook.com/pulsobursatil.ul

The content of this document is just for informational purposes. The information and opinions expressed should not be consider as recommendations for future decisions. Under any circumstances, the Capital Market Laboratory of University of Lima will be responsible for the use of the statements in this document.

SOVEREIGN RATING

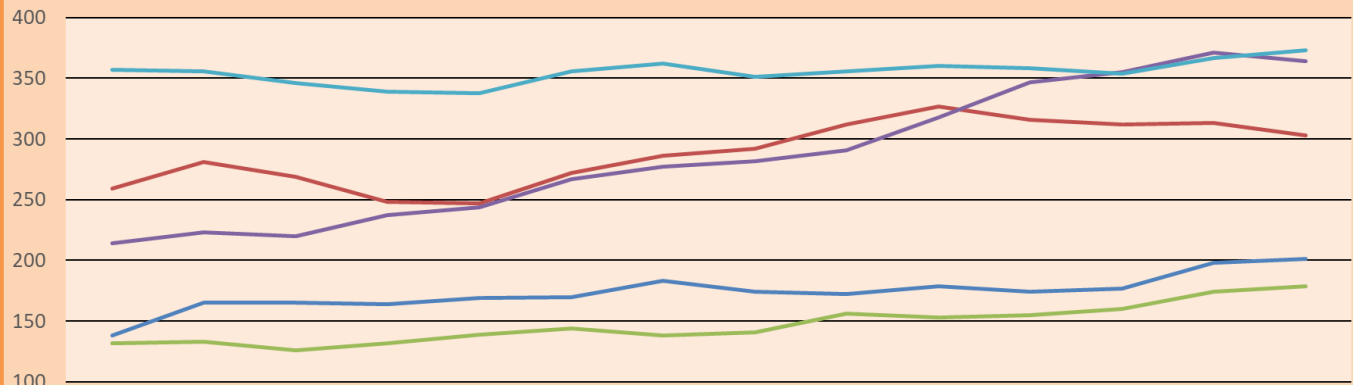
RISK RATINGS			
Moody's	S&P	Fitch	
Aaa	AAA	AAA	Prime
Aa1	AA+	AA+	High credit quality
Aa2	AA	AA	
Aa3	AA-	AA-	
A1	A+	A+	Medium-high grade, with low credit risk
A2	A	A	
A3	A-	A-	
Baa1	BBB+	BBB+	Moderate Credit Risk
Baa2	BBB	BBB	
Baa3	BBB-	BBB-	
Ba1	BB+	BB+	It has speculative elements and it is subject to substantial credit risk
Ba2	BB	BB	
Ba3	BB-	BB-	
B1	B+	B+	It is considered speculative and it has high credit risk
B2	B	B	
B3	B-	B-	
Caa1	CCC+	CCC	Bad credit conditions and it is subject to high credit risk
Caa2	CCC		
Caa3	CCC-		
Ca	CC	DDD	Very close to default or in default
C	C		
	D		

Source: Bloomberg

Latin America Credit Rating			
Clasificadora de riesgo			
Country	Moody's	Fitch	S&P
Peru	Baa1	BBB	BBB
México	Ba2	BB-	BB-
Venezuela	C	WD	NR
Brazil	Ba2	BB-	BB-
Colombia	Baa2	BB+	BB+
Chile	A2	A-	A
Argentina	Ca	WD	CCC-
Panama	Baa2	BBB-	BBB

Source: Bloomberg

LATAM Country Risk(bps)



	Feb-21	Mar-21	Abr-21	May-21	Jun-21	Jul-21	Ago-21	Set-21	Oct-21	Nov-21	Dic-21	Ene-22	Feb-22	Mar-22
Perú	138	165	165	164	169	170	183	174	172	179	174	177	198	201
Brasil	259	281	269	248	247	272	286	292	312	327	316	312	313	303
Chile	132	133	126	132	139	144	138	141	156	153	155	160	174	179
Colombia	214	223	220	237	244	267	277	282	291	318	347	355	371	364
México	357	356	346	339	338	356	362	351	356	360	358	354	367	373

Source: BCRP

Capital Market Laboratory Coordinator: IMS Javier Penny Pestana
Collaboration: Nikolas Díaz, Nadia Contreras, Joseph Martinez y Marcelo Cossar
email: pulsobursatil@ulima.edu.pe
facebook: www.facebook.com/pulsobursatil.ul

The content of this document is just for informational purposes. The information and opinions expressed should not be consider as recommendations for future decisions. Under any circumstances, the Capital Market Laboratory of University of Lima will be responsible for the use of the statements in this document.