

## LATAM

Lima, May 19, 2023

Peru: The LSE General Index ended today's session with a positive result of +0.20%. The index maintains a positive cumulative annual trend of +1.14% in local currency and a positive cumulative trend of +4.72% in dollar-adjusted currency. The S&P/BVL Peru SEL varied by +0.03% while the S&P/BVL LIMA 25 varied by -0.23%. The spot PEN reached S/.3.860. Headline: GDP in the first quarter registered its first contraction in 2 years.

Chile: The IPSA index ended the day with a positive return of +0.22%. The most benefited sectors of the day were Energy (+2.96%) and Information Technology (+2.61%). The best performing stocks were Plaza SA (+5.07%) and Quinenco SA (+4.26%). Headline: Chile's GDP falls less than expected in 1Q and encourages more optimistic forecasts for the year.

Colombia: The COLCAP index ended the session with a negative return of -1.13%. The worst performing sectors of the day were Consumer Staples (-2.67%) and Utilities (-2.54%). The worst performing stocks were Interconexión Eléctrica SA (-4.41%) and Corporación Financiera Colombiana (-3.35%). Headline: Oil drilling activity fell 29% in April.

Mexico: The IPC index closed the day in negative territory of -1.75%. The sectors that lost the most during the day were Communication services (-2.86%) and Materials (-2.65%). The worst performing stocks were Grupo México SAB de CV (-4.29%) and Promotora y Operadora de Infraestructura SAB de CV (-3.36%). Headline: Banxico warns that high interest rates will last for a long time.

Brazil: The IBOVESPA index closed the day in positive territory, +0.58%. The sectors that benefited the most during the day were Utilities (+1.72%) and Non-Basic Consumer Products (+1.71%). The best performing stocks were MRV Engenharia e Participações (+7.55%) and Raizen SA (+6.34%). Headline: The dollar approaches R\$ 5, and the Ibovespa accumulates a gain of 2% in the week.

### Equity

Largest Gains	Exchange	Curr.	Price	▲%
EMPRESAS COPEC	SGO	CLP	5,910.00	2.96%
SONDA SA	SGO	CLP	395.43	2.61%
ENTEL	SGO	CLP	3,087.00	2.56%
CEMENTOS ARGOS	COL	COP	3,047.00	2.52%
COLBUN SA	SGO	CLP	118.90	2.41%

Source: Refinitiv

Largest Losses	Exchange	Curr.	Price	▼%
ISA SA	COL	COL	16,460	-4.41%
GRUPO MEXICO-B	MEX	MXN	80	-4.29%
PROMOTORA MEX	MEX	MXN	174	-3.36%
ENEL AMERICAS SA	SGO	CLP	110	-3.35%
CORFICOLOM COL	COL	COP	13,000	-3.35%

Source: Refinitiv

Per Turnover	Exchange	Amount (US\$)
GRUPO F BANORT-O	MEX	71,102.00
WALMART DE MEXIC	MEX	37,427.99
CEMEX SAB-CPO	MEX	25,925.57
AMERICA MOVIL-L	NYQ	20,416.79
ARCA CONTINENTAL	MEX	18,290.47

Source: Refinitiv

Per Volume	Exchange	Volume
ITAU CORPBANCA	SGO	1,017,246,735.00
ENEL CHILE SA	SGO	94,979,143.00
COLBUN SA	SGO	48,480,773.00
BANCO SANTANDER	SGO	45,595,424.00
CEMEX SAB-CPO	MEX	39,823,505.00

Source: Refinitiv

### ETFs

	Curr.	Close	1 D	5 D	1 M	YTD	Exchange
ISHARES MSCI ALL PERU CAPPED	USD	30.28	0.80%	-0.16%	-0.72%	2.23%	PCQ
ISHARES MSCI CHILE CAPPED	USD	29.92	-0.43%	-1.38%	8.80%	29.58%	BTQ
GLOBAL X MSCI COLOMBIA	USD	19.50	0.36%	-0.80%	-1.66%	-30.41%	PCQ
ISHARES MSCI MEXICO CAPPED	USD	159.75	0.50%	0.83%	6.50%	23.01%	LSE
ISHARES MSCI EMERGING MARKETS	USD	38.98	0.08%	1.12%	-1.04%	-20.20%	PCQ
VANGUARD FTSE EMERGING MARKETS	CAD	32.37	-0.03%	0.31%	-1.37%	-13.91%	TOR
ISHARES CORE MSCI EMERGING MARKETS	USD	48.41	0.06%	1.11%	-0.72%	-19.13%	PCQ
ISHARES JP MORGAN EMERGING MARKETS BONDS	USD	84.17	-0.01%	-1.22%	-2.23%	-22.82%	NMQ
MORGAN STANLEY EMERGING MARKETS DOMESTIC	USD	4.68	-1.06%	-0.21%	3.08%	-14.60%	NYQ
ISHARES MSCI BRAZIL ETF	USD	29.89	-0.13%	0.30%	10.34%	6.48%	PCQ

Source: Refinitiv

### Main Indexes

	Close	1 D	5 D	1 M	YTD	Market Cap. (US\$ Mill.)
▲ IPSA (Chile)	5,653.60	0.23%	1.02%	7.19%	31.48%	123,052
▲ IGPA (Chile)	28,869.30	0.10%	1.28%	6.18%	34.04%	150,439
▼ COLSC (Colombia)	869.58	-0.16%	-0.07%	-1.00%	-10.64%	3,520
▼ COLCAP (Colombia)	1,123.90	-1.13%	-3.04%	-5.84%	-20.35%	55,572
▲ S&P/BVL LIMA (Peru)	21,633.44	0.21%	0.45%	-1.29%	2.61%	101,620
▲ S&P/BVL SEL (Perú)	545.62	0.03%	0.41%	-4.13%	-3.01%	84,799
▼ S&P/BVL LIMA 25	29,886.35	-0.23%	-0.42%	-2.03%	-1.06%	101,075
▼ IPC (México)	54,296.05	-1.75%	-1.19%	1.49%	1.92%	406,979
▼ S&P MILA 40	477.25	-0.24%	-1.76%	0.49%	7.28%	220,610
▼ IBOVESPA (Brazil)	22,167.30	-0.1%	0.6%	11.2%	17.7%	648,992

\*Legend: Variation 1D: 1 day; 5D: 5 days; 1M: 1 Month; YTD: Var% to date

Source: Refinitiv, Bloomberg

### Currency

	Price	1 D*	5 D*	1 M*	YTD*
▲ Sol (PEN)	3.68	0.04%	1.05%	-1.69%	-7.58%
▲ Peso Chileno (CLP)	797.84	0.26%	1.65%	-2.51%	-6.26%
▲ Peso Colombiano (COP)	4,539.50	0.13%	-0.34%	-0.56%	11.66%
▲ Peso Mexicano (MXN)	17.77	0.38%	1.08%	-1.90%	-13.26%
▲ Real Brasileiro (BRL)	5.00	0.66%	1.60%	-1.12%	-10.27%

\*Legend: Variation 1D: 1 day; 5D: 5 days; 1M: 1 Month; YTD: Var% to date

Source: Refinitiv

### Fixed Income

Instrument	Currency	Price	Bid Yield (%)	Ask Yield (%)	Duration
PERU 7.35 07/21/25	USD	4.85	104.76	475.9%	2.01
PERU 4.125 08/25/27	USD	4.62	97.87	461.1%	3.92
PERU 8.75 11/21/33	USD	5.39	125.65	541.9%	7.25
PERU 6.55 03/14/37	USD	5.54	109.12	549.8%	9.01
PERU 5.625 11/18/2050	USD	5.64	99.49	560.8%	14.31
CHILE 2.45 01/31/31	USD	4.35	87.44	434.1%	6.95
CHILE 3.125 01/21/26	USD	4.42	96.78	436.9%	2.56
CHILE 3.625 10/30/42	USD	5.32	79.58	527.4%	13.35
COLOM 11.85 03/09/28	USD	7.75	115.94	772.8%	3.81
COLOM 10.375 01/28/33	USD	8.38	113.36	792.0%	6.40
COLOM 7.375 09/18/37	USD	8.24	92.76	811.8%	8.77
COLOM 6.125 01/18/41	USD	8.55	77.21	840.4%	9.90
MEX 4 10/02/23	MXV	4.46	88.85	448.0%	7.58
MEX5.55 01/45	USD	6.17	92.53	612.9%	12.29

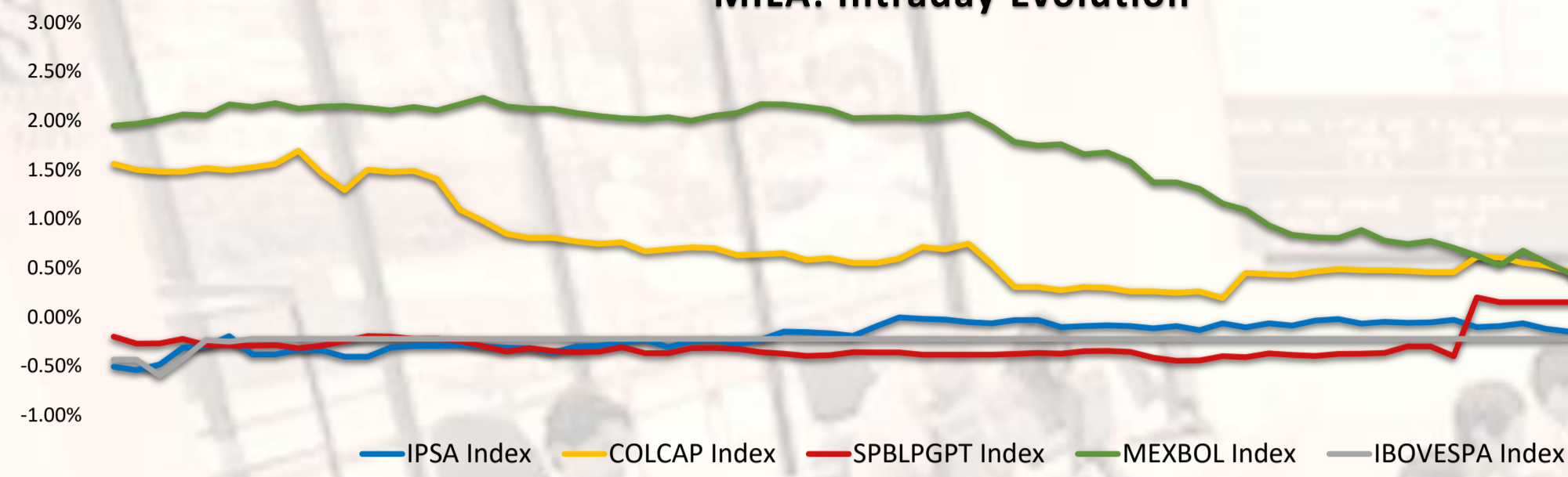
Source: Refinitiv

Capital Market Laboratory Coordinator: MS Javier Penny Pestana  
Collaboration: Nadia Contreras, Níkolás Díaz, Joseph Martinez y Marcelo Cossar  
email: pulsobursatil@ulima.edu.pe

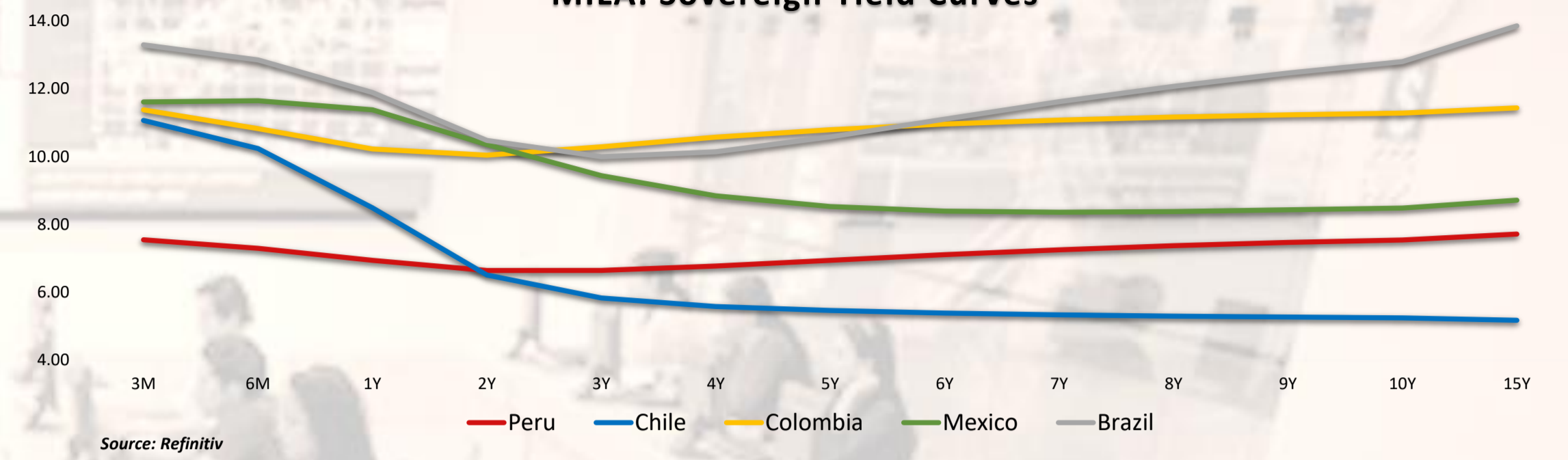
The content of this document is just for informational purposes. The information and opinions expressed should not be consider as recommendations for future decisions. Under any circumstances, the Capital Market Laboratory of University of Lima will be responsible for the use of the statements in this document.



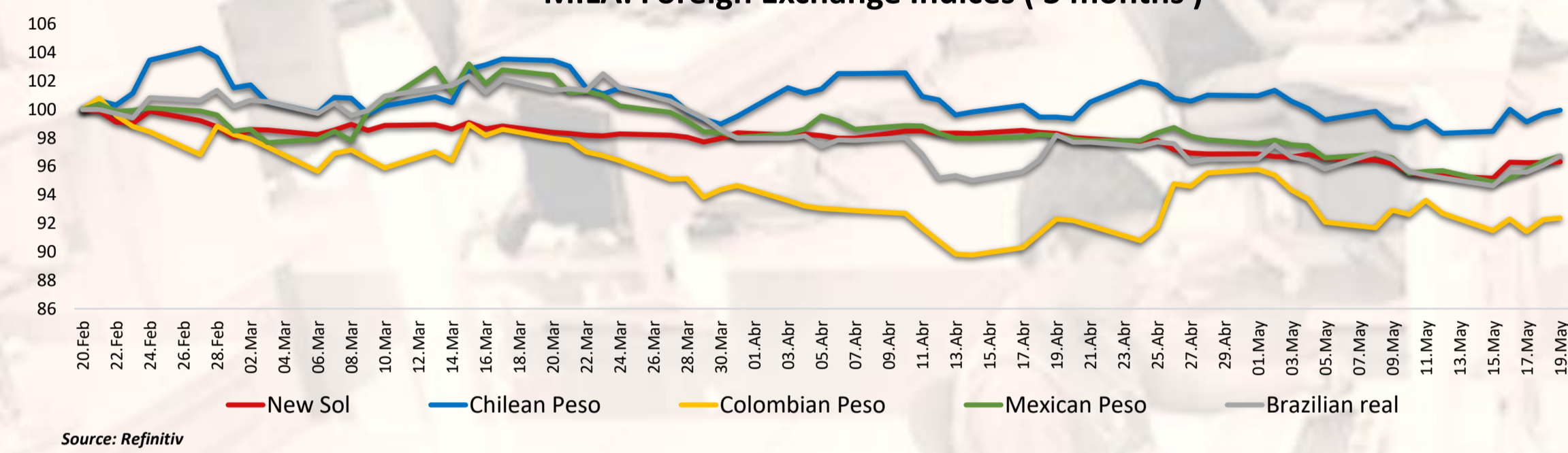
**MILA: Intraday Evolution**



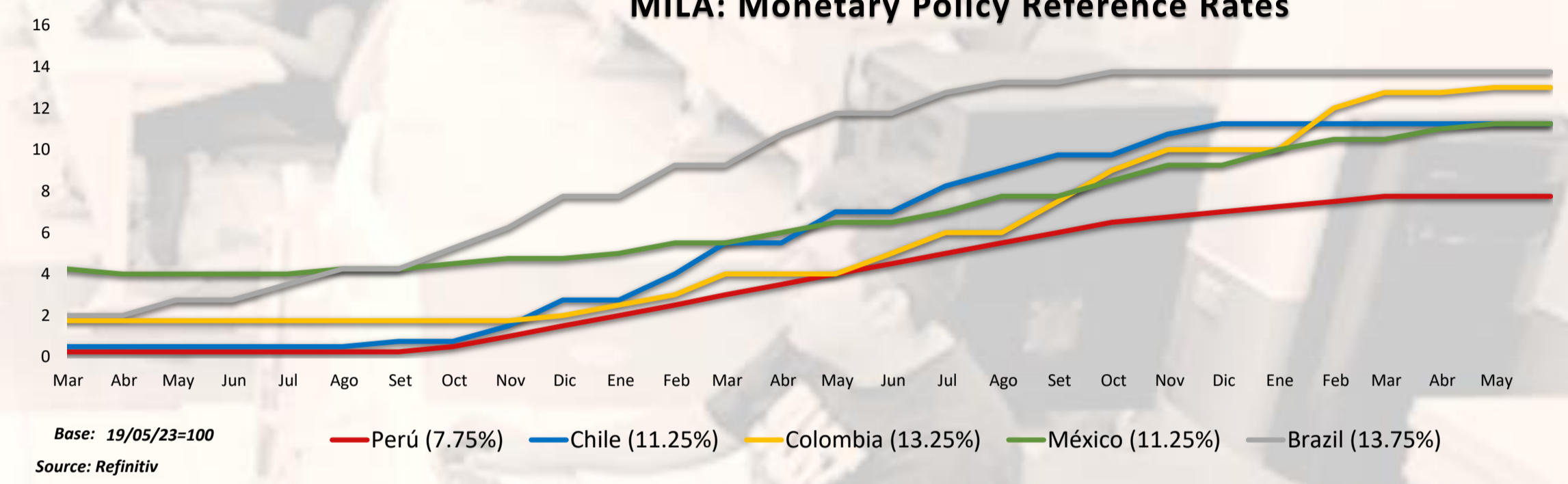
**MILA: Sovereign Yield Curves**



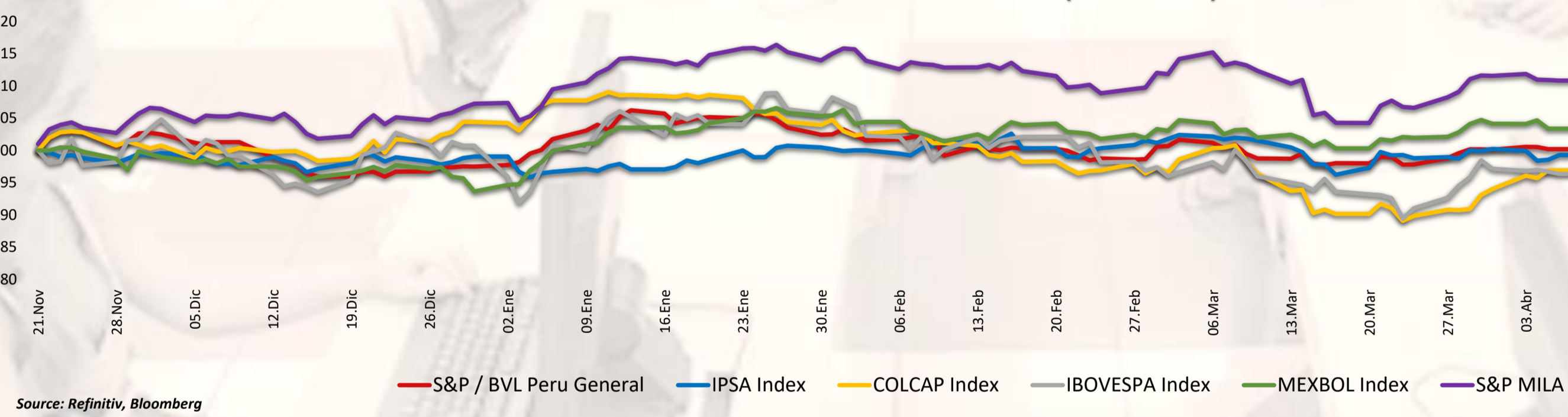
**MILA: Foreign Exchange Indices ( 3 months )**



**MILA: Monetary Policy Reference Rates**



**MILA: Stock Indices (6 months)**



Capital Market Laboratory Coordinator: MS Javier Penny Pestana  
Collaboration: Nadia Contreras, Níkolás Díaz, Joseph Martinez y Marcelo Cossar  
email: pulsobursatil@ulima.edu.pe



## WORLD

### United States:

The US market ended with negative returns, as initial gains faded after a breakdown in fiscal debt ceiling negotiations in Washington, dampening confidence that there will be an agreement in the coming days to avoid a default. The DOW JONES index closed with negative results, in a context where Fed Chairman Powell said that inflation is well above target and that the central bank is committed to bring it back to the 2% target, but due to the stress in the banking sector, it may be unnecessary to raise rates. The S&P 500 index also ended with a negative performance, as investors were digesting the latest developments on the debt ceiling. Also, on the corporate side, Foot Locker shares fell more than 23% after disappointing quarterly results. Finally, the NASDAQ index closed lower. However, next week will bring a slew of reports that are expected to see key earnings from the retail, semiconductor and technology sectors. Thus, DOW JONES -0.33%, S&P 500 -0.14% and NASDAQ -0.24% ended with negative results.

### Europe:

The main European indices ended the session with positive returns. The pan-European STOXX 600 index closed with gains, driven by miners and financial services companies. Inflation was confirmed at 7% in April 2023, slightly higher than the previous month's 13-month low of 6.9%. The UK market, reflected in the FTSE 100, closed higher as UK GfK consumer confidence rose for a fourth month in May to the highest level since Russia's invasion of Ukraine. Meanwhile, Bank of England Governor Andrew Bailey acknowledged that further monetary policy tightening may be necessary if inflationary pressures persist. Similarly, the DAX index closed in positive territory, boosted by the deceleration of producer price inflation to its lowest level in more than two years, indicating a further easing of inflationary pressures in Europe. Also, the best performing stocks were Merck (+3.16) and Porsche AG (+2.87). The French market closed higher, following its European peers higher, as investors were monitoring the U.S. debt ceiling negotiations. Also, top gainers were Veolia Environment (+2.1%), Stellantis NV (+1.9%). Thus, FTSE 100 +0.19%; CAC 40 +0.61%; DAX +0.69%; STOXX 600 +0.66% ended at positive levels.

### Asia:

The main Asian indices closed with mixed performances. The Chinese market ended with negative returns, with almost all sectors participating in the decline. Investors continued to assess the strength of China's post-pandemic recovery after a series of economic data pointed to a difficult recovery path. In line, the Hang Seng Index closed at its lowest level since March 20, amid widespread losses in which the technology and consumer sectors sank around 2%, respectively. Alibaba Group Holdings plunged 6.5% following worse-than-expected results and plans to spin off the company's cloud division. The South Korean market ended with positive results. The Japanese market closed higher as strong domestic results and a weaker yen boosted the outlook for Japanese equities. Local equities also rose as progress in debt ceiling negotiations and upbeat corporate updates in the US lifted market sentiment. The Australian market ended higher, rising for the second consecutive session, with technology and financial stocks leading the advance. Financial stocks included Commonwealth Bank (1.8%), Westpac Banking (1.2%), and NAB (1.5%), and among tech stocks, Computershare (1.1%), Block Inc (3.2%), and Rea Group (2.4%). Thus, NIKKEI +0.77%; HANG SENG -1.40%; CSI 300 -0.29%; S&P/ASX 200 +0.59%; KOSPI +0.89%, SHANGHAI COMPOSITE -0.42% ended with mixed performances.

## ETFs

	Curr.	Close	1 D	5 D	1 M	YTD	Exchange
SPDR S&P 500 ETF TRUST	USD	418.62	-0.15%	1.71%	2.30%	-11.86%	PCQ
ISHARES MSCI EMERGING MARKETS ETF	USD	38.98	0.08%	1.12%	-1.04%	-20.20%	PCQ
ISHARES IBOXX \$ HIGH YIELD CORPORATE BOND ETF	USD	74.20	0.11%	-0.30%	-0.86%	-14.72%	PCQ
FINANCIAL SELECT SECTOR SPDR FUND	USD	32.60	-0.43%	2.19%	1.91%	-16.52%	PCQ
VANECK GOLD MINERS ETF	USD	32.16	0.88%	-4.29%	-6.59%	0.41%	PCQ
ISHARES RUSSELL 2000 ETF	USD	176.11	-0.61%	1.96%	1.28%	-20.83%	PCQ
SPDR GOLD SHARES	USD	183.64	0.99%	-1.70%	-1.53%	7.42%	PCQ
ISHARES 20+ YEAR TREASURY BOND ETF	USD	101.10	-0.71%	-3.04%	-6.85%	-31.78%	NMQ
INVESCO QQQ TRUST SERIES 1	USD	336.51	-0.23%	3.53%	5.80%	-15.42%	NMQ
ISHARES BIOTECHNOLOGY ETF	USD	130.08	0.86%	-0.08%	-0.74%	-14.77%	NMQ
ENERGY SELECT SECTOR SPDR FUND	USD	79.64	0.77%	1.43%	-6.28%	43.50%	PCQ
PROSHARES ULTRA VIX ST FUTURES ETF	USD	3.23	3.53%	-7.18%	-26.59%	-74.01%	BTQ
UNITED STATES OIL ETF	USD	63.90	-0.22%	2.95%	-9.05%	17.55%	PCQ
ISHARES MSCI BRAZIL ETF	USD	29.89	-0.13%	0.30%	10.34%	6.48%	PCQ
SPDR S&P OIL & GAS EXP & PRODUCTION ETF	USD	123.04	0.19%	3.38%	-5.50%	28.34%	PCQ
UTILITIES SELECT SECTOR SPDR FUND	USD	66.11	-0.15%	-4.23%	-5.30%	-7.64%	PCQ
ISHARES US REAL ESTATE ETF	USD	82.56	-0.13%	-1.91%	-1.97%	-28.91%	PCQ
SPDR S&P BIOTECH ETF	USD	85.37	0.76%	-0.07%	11.06%	-23.75%	PCQ
ISHARES IBOXX \$ INVESTMENT GRADE CORP BOND ETF	USD	106.61	-0.12%	-1.58%	-3.37%	-19.55%	PCQ
ISHARES JP MORGAN USD EMERGING MARKETS BOND ETF	USD	84.17	-0.01%	-1.22%	-2.23%	-22.82%	NMQ
REAL ESTATE SELECT SECT SPDR FUND	USD	36.21	-0.17%	-2.37%	-2.40%	-30.11%	PCQ
ISHARES CHINA LARGE-CAP ETF	USD	27.90	-0.53%	0.40%	-4.75%	-23.73%	PCQ
CONSUMER STAPLES SPDR FUND	USD	75.92	0.07%	-1.56%	0.74%	-1.54%	PCQ
VANECK JUNIOR GOLD MINERS ETF	USD	38.30	0.95%	-4.18%	-7.40%	-8.66%	PCQ
SPDR BLOOMBERG HIGH YIELD BOND ETF	USD	90.99	0.05%	-0.36%	-0.98%	-16.19%	PCQ
VANGUARD REAL ESTATE INDEX FUND ETF	USD	80.40	-0.16%	-1.99%	-2.42%	-30.70%	PCQ
DIREXION DAILY GOLD MINERS INDEX BULL 2X SHARES	USD	40.51	1.43%	-8.70%	-14.39%	-20.79%	PCQ
PROSHARES ULTRASHORT 20+ YEAR TREASURY	USD	30.70	1.32%	6.67%	14.77%	81.76%	PCQ
ISHARES MSCI EAFE ETF	USD	73.66	0.59%	0.71%	2.39%	-6.38%	PCQ
ISHARES PREFERRED AND INCOME SECURITIES ETF	USD	30.00	-0.07%	0.77%	-3.47%	-23.92%	NMQ
WISDOMTREE JAPAN HEDGED EQUITY ETF	USD	76.20	-0.55%	2.52%	10.05%	21.84%	PCQ
GRAYSCALE BITCOIN TRUST (BTC)	USD	14.39	-0.21%	0.91%	-11.23%	-57.99%	PNK

Source: Refinitiv

## Main Indexes

	Close	1 D	5 D	1 M	YTD	Market Cap. (US\$ Mill.)
▲ Dow Jones (EEUU)	51.95	0.15%	-0.69%	-4.96%	-8.41%	194,584
▼ Standard & Poor's 500 (EEUU)	4,191.98	-0.14%	1.65%	2.12%	-12.05%	36,528
▼ NASDAQ Composite (EEUU)	12,657.90	-0.24%	3.04%	4.71%	-19.09%	21,331
▲ Stoxx EUROPE 600 (Europa)	468.85	0.66%	0.72%	2.16%	-3.88%	458,326,570
▲ DAX (Alemania)	30.23	0.93%	1.85%	2.34%	-6.51%	893
▲ FTSE 100 (Reino Unido)	7,756.87	0.19%	0.03%	0.20%	5.04%	446
▲ CAC 40 (Francia)	7,491.96	0.61%	1.04%	2.28%	4.74%	3,518,036
▲ IBEX 35 (España)	9,251.50	0.42%	0.19%	-0.65%	6.17%	881,640
▲ MSCI AC Asia Pacific Index	513.32	0.16%	0.60%	-1.76%	-18.50%	21,460
▼ HANG SENG (Hong kong)	19,450.57	-1.40%	-0.90%	-4.33%	-16.87%	21,813
▼ SHANGHAI SE Comp. (China)	3,283.54	-0.42%	0.34%	-1.33%	-9.79%	51,102,766
▲ NIKKEI 225 (Japón)	30,808.35	0.77%	4.83%	11.96%	7.00%	542,689
▲ S&P / ASX 200 (Australia)	7,279.50	0.59%	0.31%	0.84%	-2.22%	33,445
▲ KOSPI (Corea del Sur)	2,537.79	0.89%	2.52%	1.90%	-14.77%	6,894,291

\*Legend: Variation 1D: 1 day; 5D: 5 days; 1M: 1 Month; YTD: Var% to date

Source: Refinitiv, Bloomberg

## Equity

### United States (Stocks from SPX Index)

Largest Gains	Curr.	Price	▲%	Exchange	Largest Losses	Curr.	Price	▼%	Exchange
HGH WR NTWRK O/d	USD	0.155	51.96%	PNK	VF CORP/d	USD	19.07	-8.18%	NYQ
CATALENT INC/d	USD	37.17	15.65%	NYQ	LUMEN TCHMLG O/d	USD	2.35	-6.37%	NYQ
CLEANTECH LITH/d	GBp	39	5.41%	LSE	SVB FINL GRP O/d	USD	0.4511	-6.02%	PNK
POLYNOVO/d	AUD	1.405	4.46%	ASX	ULTA BEAUTY IN/d	USD	491.05	-4.39%	NSQ
EPAM SYSTEMS I/d	USD	247.5	3.94%	NYQ	SIGNATURE BK O/d	USD	0.1399	-4.18%	PNK

Source: Refinitiv

### Europe (Stocks from STOXX EUROPE 600)

Largest Gains	Curr.	Price	▲%	Exchange	Largest Losses	Curr.	Price	▼%	Exchange
C3AI INC A ORD/d	USD	23.97	23.43%	NYQ	GREEN RS FDS O/d	CAD	(en blanco)	-100.00%	CVE
PLAYAGS INC OR/d	USD	6.14	15.85%	NYQ	LUMINEX RESOUR/d	CAD	(en blanco)	-100.00%	CVE
BLEND LABS A O/d	USD	1.11	15.30%	NYQ	BARSELE MINERA/d	CAD	(en blanco)	-100.00%	CVE
SAMHALLSBYGG/d	SEK	6.724	10.59%	STO	MANILA BULLETI/d	PHP	(en blanco)	-100.00%	PHS
HEICO CORP/d	USD	178.9	7.80%	NYQ	AKZO NOBEL/d	EUR	(en blanco)	-100.00%	CHI

Source: Refinitiv

## Currency

	Price	1 D*	5 D*	1 M*	YTD*
▼ Euro	1.0802	-0.64%	-0.42%	-0.87%	-4.98%
▲ Yen	137.95	0.20%	1.65%	4.40%	19.87%
▲ Yuan	7.006	0.11%	0.70%	2.01%	10.29%
▼ Won Coreano	1325.2	-0.68%	-1.28%	0.68%	11.55%
▼ Libra Esterlina	1.2444	-0.34%	-0.10%	0.25%	-8.02%
▼ Dólar de Hong Kong	7.8152	-0.19%	-0.34%	-0.43%	0.25%
▼ Dólar Australiano	0.665	-0.14%	0.06%	-0.27%	-8.40%

\*Legend: Variation 1D: 1 day; 5D: 5 days; 1M: 1 Month; YTD: Var% to date

## Commodities

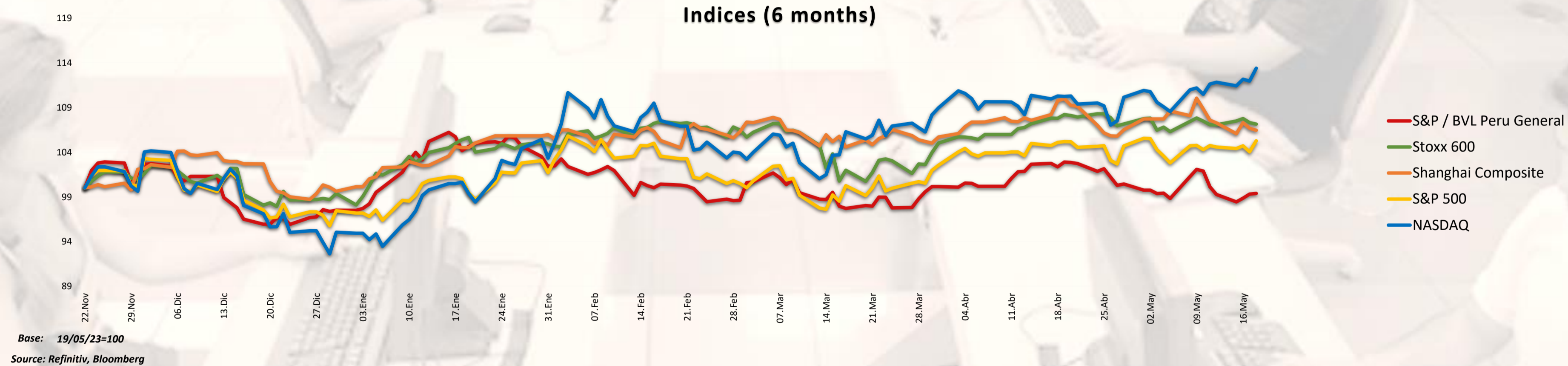
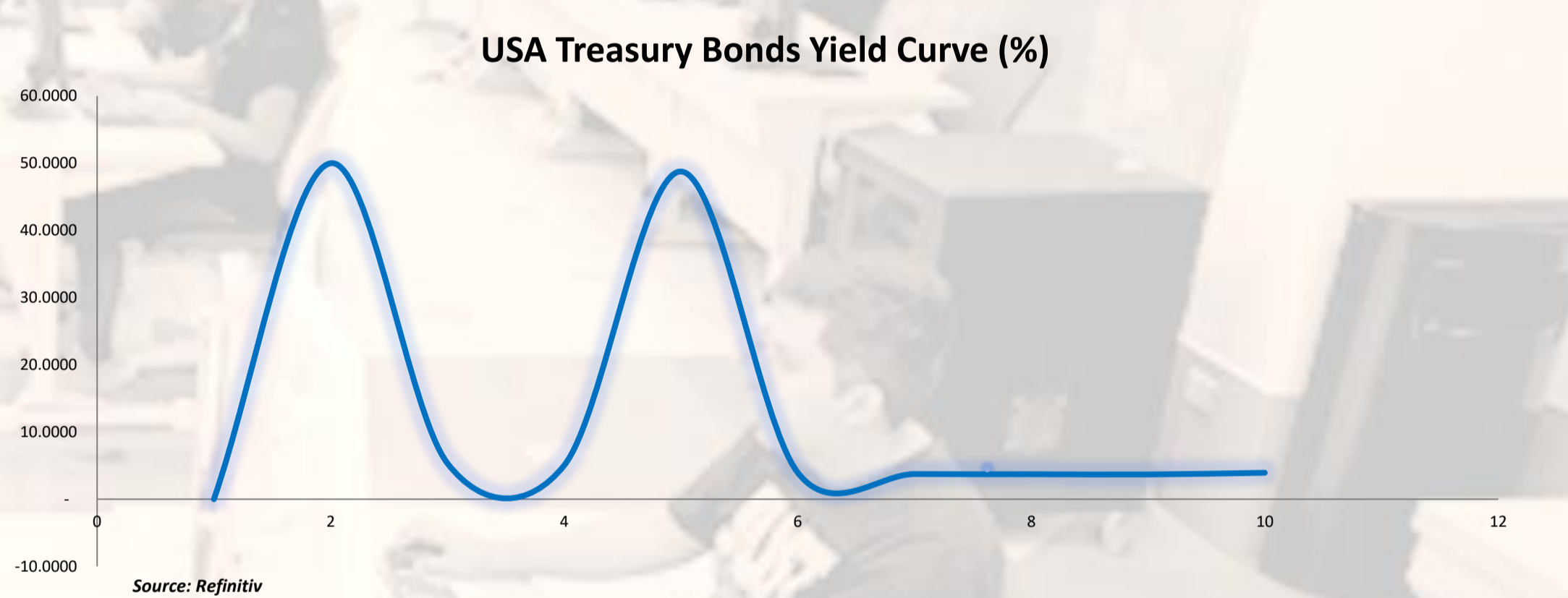
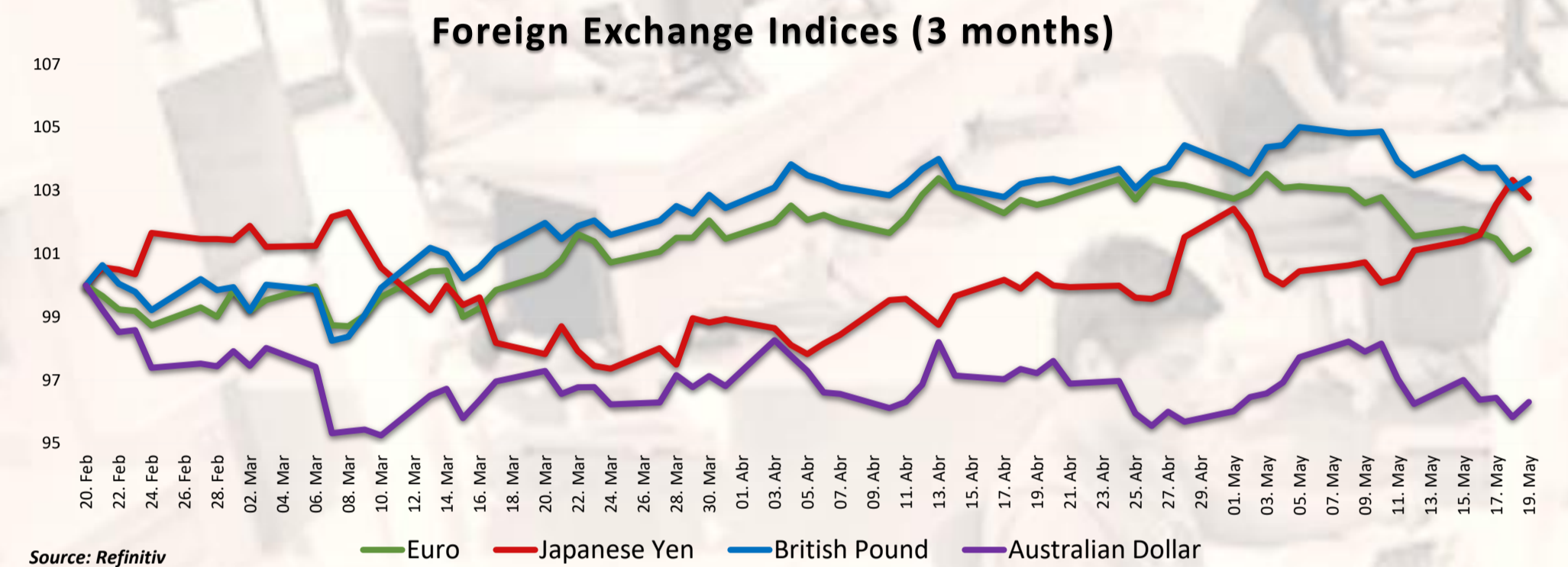
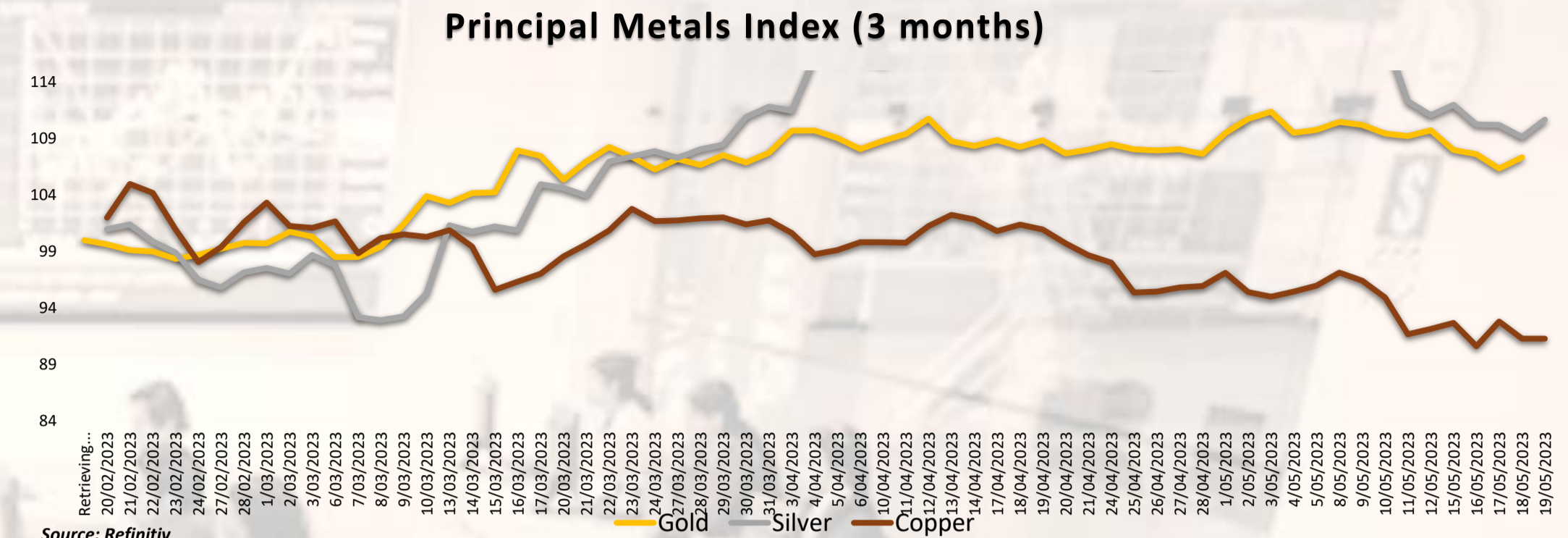
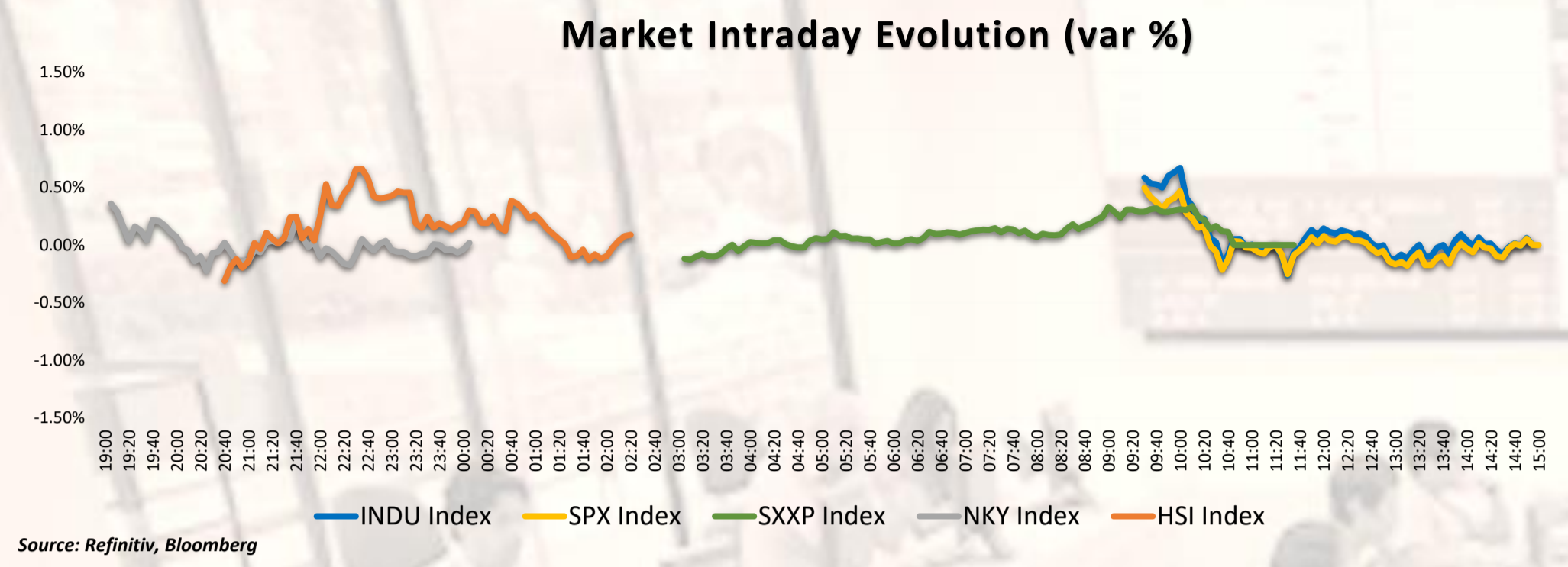
	Price	1 D*	5 D*	1 M*	YTD*
Oro (US\$ Oz. T) (LME)	8128.48	0.00%	-1.15%	-7.70%	-16.55%
Plata (US\$ Oz. T) (LME)	2450	0.00%	-3.28%	-12.36%	-31.75%
Cobre (US\$ TM) (LME)	71.55	-0.43%	2.16%	-11.32%	6.73%
Zinc (US\$ TM) (LME)	25247	0.00%	0.57%	3.92%	-35.88%
Petroleo WTI (US\$ Barril) (NYM)	2061.25	0.00%	-0.31%	-2.02%	-11.83%
Estaño (US\$ TM) (LME)	25.78	0.66%	-1.68%	11.22%	50.76%
Plomo (US\$ TM) (LME)	25.78	0.66%	-1.68%	11.22%	50.76%
Azúcar #11 (US\$ Libra) (NYB-ICE)	3068	2.57%	2.75%	6.90%	21.03%
Cacao (US\$ TM) (NYB-ICE)	0	0.00%	0.00%	0.00%	0.00%
Café Arábica (US\$ TM) (NYB-ICE)	0	0.00%	0.00%	0.00%	0.00%

\*Legend: Variation 1D: 1 day; 5D: 5 days; 1M: 1 Month; YTD: Var% to date

Capital Market Laboratory Coordinator: MS Javier Penny Pestana  
Collaboration: Nadia Contreras, Nikolas Díaz, Joseph Martínez y Marcelo Cossar  
email: pulsoBursatil@ulima.edu.pe

The content of this document is just for informational purposes. The information and opinions expressed should not be considered as recommendations for future decisions. Under any circumstances, the Capital Market Laboratory of University of Lima will be responsible for the use of the statements in this document.





Capital Market Laboratory Coordinator: MS Javier Penny Pestana  
Collaboration: Nadia Contreras, Nikolas Díaz, Joseph Martinez y Marcelo Cossar  
email: pulsobursatil@ulima.edu.pe



**RANKING STOCKS LIMA**

Ticket	Currency	Price	1 D*	5 D*	1 M*	YTD*	Frequency	Volume	Beta	Dividend Yield (%)	Price Earning	Capitalización Bursátil (M US\$)	Sector	Index Weight
ALICORCL.LM	S/.	6.00	-1.15%	-1.64%	-3.67%	-7.24%	0.00%	0	0.62	4.58	8.51	2,506,851	Industrial	20.00%
BACKUSI.LM	S/.	25.50	0.00%	0.00%	2.49%	9.46%	90.00%	0	0.41	6.41	94.56	104,595	Industriales	13.24%
BAP	US\$	132.75	2.96%	-3.07%	3.03%	-2.15%	90.00%	395,302	0.95	5.27	7.18	51,968,891	Diversas	-8.77%
BVN	S/.	1.65	1.23%	0.00%	11.39%	13.93%	85.00%	0	0.71	7.95	0.00	3,999	Bancos y Financieras	32.66%
CASAGRC.LM	S/.	1.65	1.23%	0.00%	11.39%	13.93%	85.00%	0	0.71	7.95	0.00	3,999	Bancos y Financieras	32.66%
BBVAC1.LM	S/.	1.65	1.23%	0.00%	11.39%	13.93%	85.00%	0	0.71	7.95	0.00	3,999	Bancos y Financieras	32.66%
CORAREI.LM	S/.	1.18	0.00%	-1.67%	-8.08%	-15.31%	80.00%	0	1.06	4.42	0.00	21,880	Industriales	-19.86%
CPAC.K	US\$	5.45	0.00%	0.93%	4.21%	5.59%	90.00%	5,289	0.51	10.37	18.84	28,784	Industriales	-1.09%
CVERDECL.LM	US\$	30.50	1.67%	4.81%	2.32%	4.72%	85.00%	0	1.14	2.38	8.11	1,171,292	Mineras	-1.99%
ENGEPEC.LM	S/.	4.20	0.00%	1.20%	7.66%	22.01%	90.00%	0	0.76	9.20	10.87	5,533	Servicios Públicos	80.52%
ENDISPC.LM	US\$	30.50	1.67%	4.81%	2.32%	4.72%	85.00%	0	1.14	2.38	8.11	1,171,292	Mineras	-1.99%
FERREYCL.LM	S/.	2.09	0.00%	-0.95%	2.62%	-1.46%	90.00%	0	0.99	11.41	4.84	16,464	Diversas	3.12%
AENZACL.LM	S/.	0.57	0.00%	0.00%	-10.94%	-31.33%	65.00%	0	0.73	0.00	0.00	739	Diversas	-51.87%
IFS	US\$	21.98	-1.30%	-4.06%	-3.98%	-6.47%	90.00%	34,368	1.06	5.30	5.32	756,238	Diversas	-18.37%
INRETC.LM	US\$	32.10	0.00%	2.23%	-1.08%	-0.22%	80.00%	0	0.75	2.51	13.03	494,950	Diversas	-0.25%
LUSURCL.LM	S/.	14.70	1.58%	3.82%	3.82%	0.03%	85.00%	0	0.57	2.35	0.00	4,574	Servicios Públicos	6.25%
MINSURI.LM	S/.	3.55	-2.47%	-3.27%	-8.97%	0.00%	90.00%	0	1.10	10.34	0.00	2,884,141	Mineras	-21.24%
SCCO.K	US\$	68.88	-0.29%	-0.88%	-8.36%	14.06%	90.00%	1,080,274	1.25	5.79	17.14	74,628,728	Mineras	15.54%
SIDERCL.LM	S/.	1.29	0.00%	-6.52%	-12.98%	-19.87%	85.00%	0	0.90	41.72	0.00	21,455	Industriales	-2.39%
UNACEMCL.LM	S/.	2.77	0.00%	0.00%	8.74%	9.58%	10.00%	0	0.02	3.49	0.00	396	Diversas	10.95%
VOLCABCL.LM	S/.	2.77	0.00%	0.00%	8.74%	9.58%	10.00%	0	0.02	3.49	0.00	396	Diversas	10.95%
BROCALCL.LM	S/.	1.65	1.23%	0.00%	11.39%	13.93%	85.00%	0	0.71	7.95	0.00	3,999	Bancos y Financieras	32.66%
CORARECL.LM	S/.	1.65	1.23%	0.00%	11.39%	13.93%	85.00%	0	0.71	7.95	0.00	3,999	Bancos y Financieras	32.66%
ENGIECL.LM	S/.	3.61	-5.00%	-77.30%	-79.08%	-46.96%	90.00%	0	0.88	7.61	5.54	7,255	Servicios Públicos	5.60%
GBVLACL.LM	S/.	0.57	0.00%	0.00%	-10.94%	-31.33%	65.00%	0	0.73	0.00	0.00	739	Diversas	-51.87%

Quantity of Shares: 25  
Source: Refinitiv

Up  
Down  
Hold

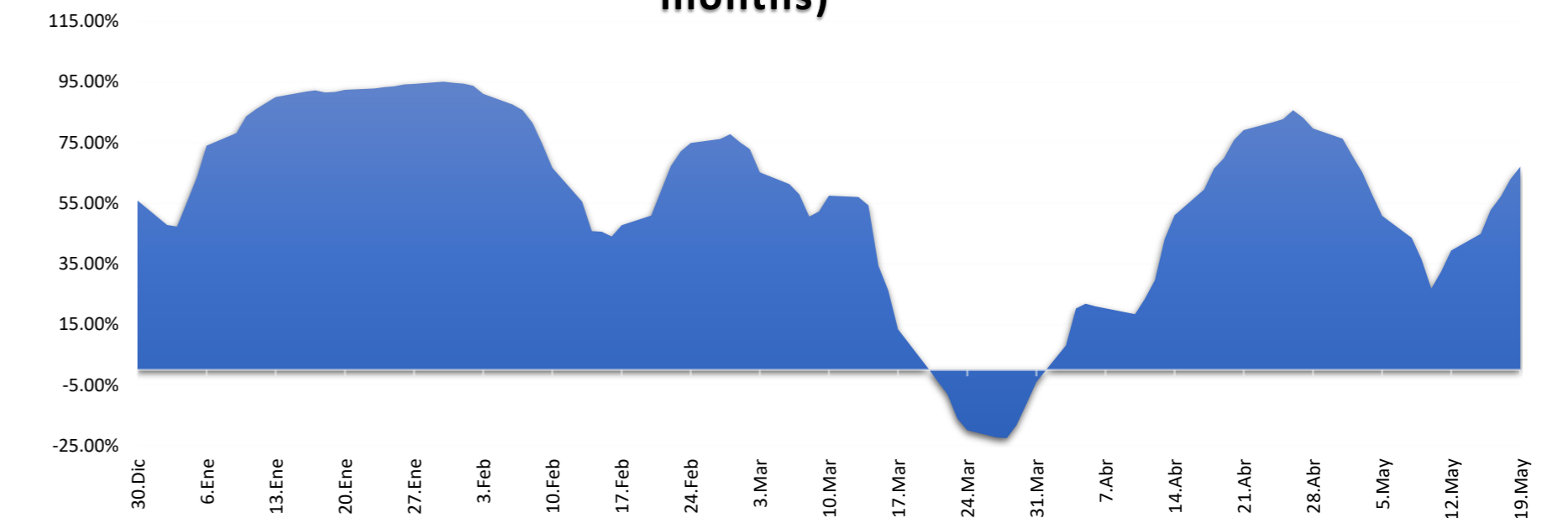
\*\* PER is used in the stock market and original currency of the instrument  
\*Legend: Variation 1D: 1 day; 5D: 5 days; 1M: 1 Month; YTD: Var% to date

**Sectorial Indices**

	Close	1 D*	5 D*	1 M*	YTD*	Beta
S&P/BVL Consumer Index	1,212.49	-0.49%	0.61%	-2.65%	-1.70%	0.27
S&P/BVL Industrial Index	231.28	0.16%	-1.42%	-1.33%	-6.30%	0.29
S&P/BVL Financials Index	953.29	2.02%	1.86%	2.36%	-0.27%	1.44
S&P/BVL Construction Index	222.40	0.23%	-1.64%	-1.30%	-8.52%	0.22
S&P/BVL Public Services Index	1,131.03	-3.08%	-0.77%	1.48%	46.10%	0.29
S&P/BVL Mining Index	412.20	-0.02%	0.52%	-14.26%	4.34%	1.57
S&P/BVL Electric Utilities Index	1,104.17	-3.08%	-0.77%	1.49%	46.10%	0.29

\*Legend: Variation 1D: 1 day; 5D: 5 days; 1M: 1 Month; YTD: Var% to date  
Source: Refinitiv

**Correlation Yield. Mining Index vs. London Metal Index (3 months)**



Source: Refinitiv

**Latin America Credit Rating**

**RISK RATINGS**

Country	Moody/s	Fitch	S&P
Peru	A	BBB	BBB
Mexico	Baa2	BBB-	BBB
Venezuela	WR	WD	NR
Brazil	BBB	BB-	BB-
Colombia	BB+	BB+	BB+
Chile	AA-	A-	A
Argentina	CCC	WD	CCC-
Panama	WD	BBB-	BBB

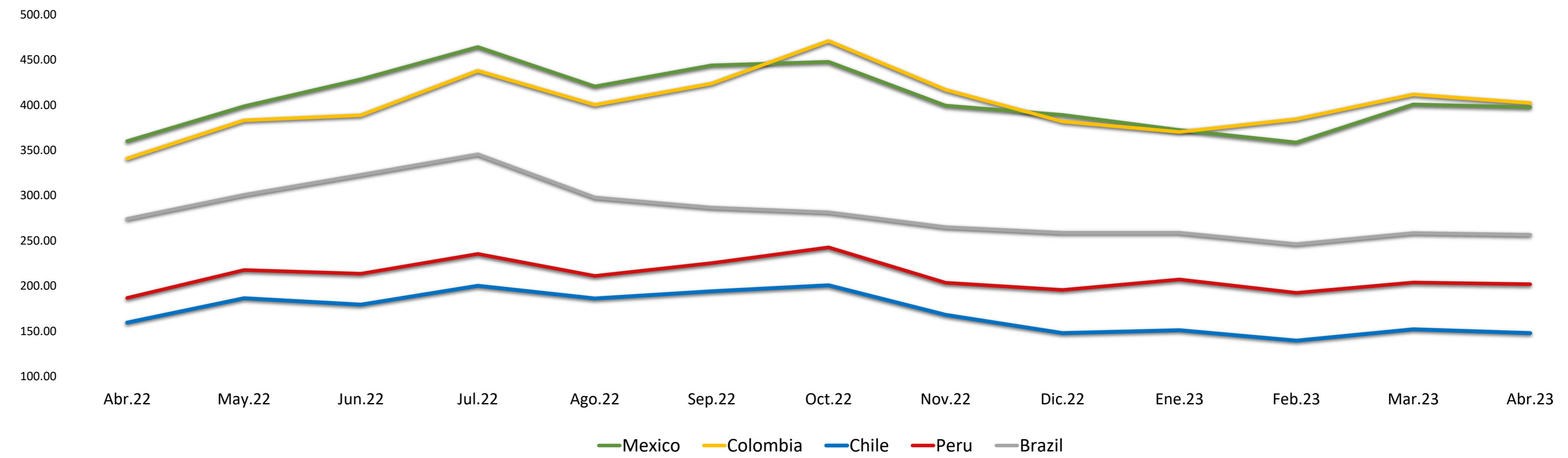
Source: Refinitiv, Bloomberg

**Legend**

	Moody/s	Fitch	S&P
Prime	Aaa	AAA	AAA
High Grade	Aa1	AA+	AA+
	Aa2	AA	AA
	Aa3	AA-	AA-
High Grade Medium	A1	A+	A+
	A2	A	A
	A3	A-	A-
Low Grade Medium	Baa1	BBB+	BBB+
	Baa2	BBB	BBB
	Baa3	BBB-	BBB-
Non-Investment Grade Speculative	Ba1	BB+	BB+
	Ba2	BB	BB
	Ba3	BB-	BB-
Highly Speculative	B1	B+	B+
	B2	B	B
	B3	B-	B-
Substantial Risk	Caa1	CCC+	CCC+
	Caa2	CCC	CCC
	Caa3	CCC-	CCC-
Extremely Speculative	Ca	CC	CC
		C	
Low Expectation of Payment		RD	SD
Default		DDD	
		DD	D
		D	
Unclassified	WR		NR

Source: Refinitiv, Bloomberg

**LATAM Country Risk (bps)**



	Abr.22	May.22	Jun.22	Jul.22	Ago.22	Sep.22	Oct.22	Nov.22	Dic.22	Ene.23	Feb.23	Mar.23	Abr.23
Peru	186.67	217.55	213.55	235.43	211.00	225.27	242.59	203.41	195.50	207.05	192.30	203.83	201.90
Brazil	274.06	300.64	322.82	345.48	297.70	286.56	281.30	264.90	258.64	258.64	246.10	258.35	256.55
Chile	159.44	186.32	179.32	200.10	186.09	194.05	200.69	167.97	147.82	150.95	139.45	152.00	147.75
Colombia	340.78	383.05	388.73	437.86	400.26	423.83	470.84	416.81	381.77	370.18	384.35	411.61	402.15
Mexico	360.00	398.59	428.41	464.10	420.43	443.77	447.72	399.31	389.00	372.32	358.55	400.70	397.60

Source: BCRP

Capital Market Laboratory Coordinator: MS Javier Penny Pestana  
Collaboration: Nadia Contreras, Nikolas Díaz, Joseph Martinez y Marcelo Cossar  
email: pulsoBursatil@ulima.edu.pe