

## LATAM

Lima, May 23, 2023

Peru: The BVL General index ended today's session with a negative result of -0.26%. The index maintains a positive cumulative annual trend of +1.24% in local currency and a positive cumulative trend of +4.32% in dollar-adjusted currency. The S&P/BVL Peru SEL varied -0.62% while the S&P/BVL LIMA 25 varied -0.45%. The spot PEN reached S/3.6867. Headline: Foreign direct investment fell 50% in first quarter.

Chile: The IPSA index ended the day with a negative return of -0.11%. The most affected sectors of the day were Non Basic Consumer Products (-2.37%) and Utilities (-0.84%). The worst performing stocks were SACI falabella (-2.55%) and Engie Energía Chile SA (-2.04%). Headline: ICR downgrades NEXUS CHILE HEALTH from BB to C

Colombia: The COLCAP index ended the session with a negative return of -0.11%. The sectors that lost the least during the day were Energy (-0.72%) and Utilities (-0.33%). The worst performing stocks were Grupo de Inversiones Suramericana (-3.11%) and Inversiones Argos SA (-2.04%). Headline: Medellín to cut electricity bills to curb Colombian inflation.

Mexico: The IPC index closed the day in negative territory, -0.64%. The worst performing sectors of the day were Real Estate (-3.38%) and Health Care (-1.52%). The worst performing stocks were Megacable Holdings SAB (-6.32%) and Industrias Peñoles SAB (-5.01%). Headline: Mexican government open to buy Banamex from Citigroup.

Brazil: The IBOVESPA index closed the day in negative territory at -0.26%. The sectors that lost the most during the day were Materials (-1.67%) and Non-Basic Consumer Products (-1.37%). The worst performing stocks were Marfrig Global Food SA (-5.18%) and CVC Brasil Operadora e agencia (-5.00%). Headline: Brazilian analysts expect inflation target to remain at 3%.

### Equity

Largest Gains	Exchange	Curr.	Price	▲%
ENTEL	SGO	CLP	3,240.00	3.51%
AGUAS ANDINAS-A	SGO	CLP	269.31	2.79%
ORBIÁ ADVANCE CO	MEX	MXN	38.94	1.62%
CENCOSUD SHOPPIN	BEC	CLP	1,282.00	1.19%
SMU SA	SGO	CLP	142.78	0.87%

Source: Refinitiv

Largest Losses	Exchange	Curr.	Price	▼%
MEGACABLE- MEX	MEX	MXN	43	-6.32%
VOLCAN CIA MIN-B	LMA	PEN	0	-6.10%
INDUSTRIAS F MEX	MEX	MXN	252	-5.01%
INFRAESTRUCTURA	SAO	BRL	7	-3.12%
FALABELLA S/SGO	SGO	CLP	1,875	-2.55%

Source: Refinitiv

Per Turnover	Exchange	Amount (US\$)
WALMART DE MEXIC	MEX	60,139.85
GRUPO F BANORT-O	MEX	54,590.91
GRUPO MEXICO-B	MEX	29,299.70
AERO DEL PACIF-B	MEX	25,961.70
CEMEX SAB-CPO	MEX	23,410.94

Source: Refinitiv

Per Volume	Exchange	Volume
WALMART DE MEXIC	MEX	0.00
INRETAIL PERU CO	LMA	0.00
GRUPO ENERGIA BO	COL	0.00
AES GENER SA	SGO	0.00
SMU SA	SGO	0.00

Source: Refinitiv

### ETFs

	Curr.	Close	1 D	5 D	1 M	YTD	Exchange
ISHARES MSCI ALL PERU CAPPED	USD	30.02	-1.43%	-1.75%	-3.40%	-1.88%	PCQ
ISHARES MSCI CHILE CAPPED	USD	29.92	0.10%	0.54%	6.59%	30.31%	BTQ
GLOBAL X MSCI COLOMBIA	USD	19.77	0.76%	1.51%	-3.42%	-30.42%	PCQ
ISHARES MSCI MEXICO CAPPED	USD	151.67	-2.75%	-6.37%	-0.81%	17.40%	LSE
ISHARES MSCI EMERGING MARKETS	USD	38.69	-1.55%	-0.74%	-2.47%	-21.09%	PCQ
VANGUARD FTSE EMERGING MARKETS	CAD	32.09	-0.86%	-1.08%	-2.52%	-15.35%	TOR
ISHARES CORE MSCI EMERGING MARKETS	USD	48.10	-1.41%	-0.56%	-2.24%	-19.81%	PCQ
ISHARES JP MORGAN EMERGING MARKETS BONDS	USD	84.26	0.12%	-0.30%	-1.71%	-21.92%	NMQ
MORGAN STANLEY EMERGING MARKETS DOMESTIC	USD	4.70	1.29%	-1.36%	1.95%	-14.23%	NYQ
ISHARES MSCI BRAZIL ETF	USD	29.81	-0.20%	0.81%	3.51%	9.43%	PCQ

Source: Refinitiv

### Main Indexes

	Close	1 D	5 D	1 M	YTD	Market Cap. (US\$ Mill.)
▼ IPSA (Chile)	5,685.30	-0.11%	1.18%	7.13%	32.38%	120,520
▲ IGPA (Chile)	29,090.00	0.14%	1.08%	6.21%	35.34%	148,046
▼ COLSC (Colombia)	868.12	-0.17%	-0.67%	-0.59%	-12.09%	3,509
▼ COLCAP (Colombia)	1,122.65	-0.11%	-1.32%	-8.09%	-21.16%	55,130
▼ S&P/BVL LIMA (Peru)	21,595.53	-0.26%	-0.60%	-3.05%	0.16%	102,023
▼ S&P/BVL SEL (Perú)	542.50	-0.62%	-0.31%	-5.29%	-5.91%	85,218
▼ S&P/BVL LIMA 25	29,662.63	-0.45%	-1.45%	-4.21%	-5.20%	101,477
▼ IPC (México)	53,123.22	-0.64%	-3.73%	-2.71%	0.20%	390,435
▼ S&P MILA 40	473.37	-0.36%	-1.33%	-2.56%	5.58%	218,711
▼ IBOVESPA (Brazil)	22,106.63	-0.4%	1.0%	4.2%	21.4%	651,486

\*Legend: Variation 1D: 1 day; 5D: 5 days; 1M: 1 Month; YTD: Var% to date  
Source: Refinitiv, Bloomberg

### Currency

	Price	1 D*	5 D*	1 M*	YTD*
▼ Sol (PEN)	3.66	-0.17%	-0.60%	-2.82%	-7.24%
▲ Peso Chileno (CLP)	802.15	0.79%	0.47%	-0.43%	-5.26%
▼ Peso Colombiano (COP)	4,467.49	-1.29%	-1.50%	-0.85%	9.58%
▲ Peso Mexicano (MXN)	17.96	0.47%	2.72%	-1.07%	-12.38%
▲ Real Brasileiro (BRL)	4.97	0.11%	0.65%	-0.66%	-12.41%

\*Legend: Variation 1D: 1 day; 5D: 5 days; 1M: 1 Month; YTD: Var% to date  
Source: Refinitiv

### Fixed Income

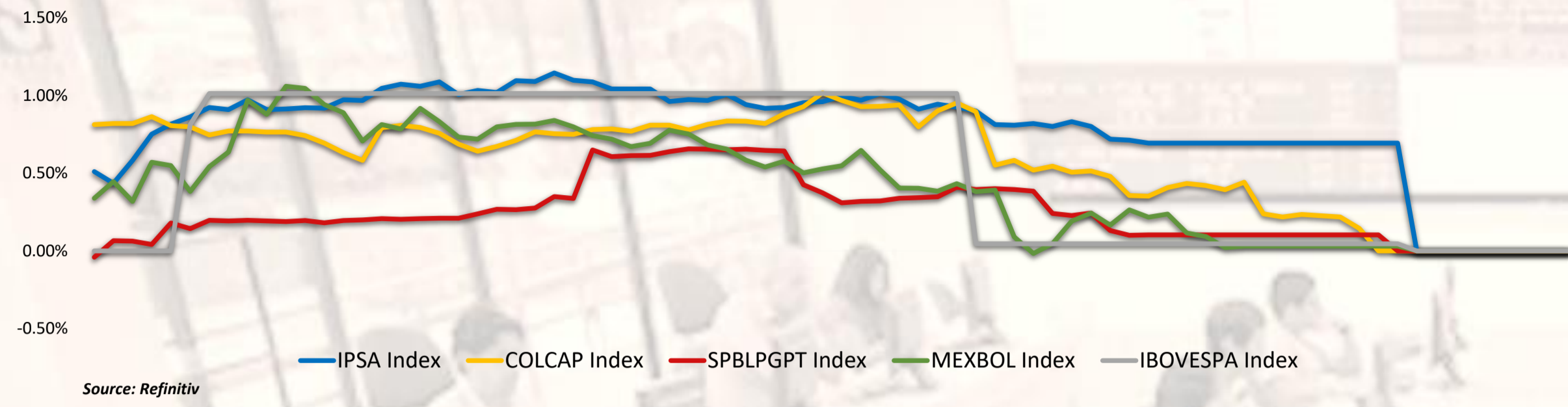
Instrument	Currency	Price	Bid Yield (%)	Ask Yield (%)	Duration
PERU 7.35 07/21/25	USD	4.92	104.98	464.7%	2.00
PERU 4.125 08/25/27	USD	4.72	97.80	463.1%	3.90
PERU 8.75 11/21/33	USD	5.47	125.73	540.9%	7.48
PERU 6.55 03/14/37	USD	5.58	108.75	553.6%	8.99
PERU 5.625 11/18/2050	USD	5.67	99.01	564.2%	14.28
CHILE 2.45 01/31/31	USD	4.43	87.09	440.1%	6.94
CHILE 3.125 01/21/26	USD	4.41	96.80	436.2%	2.55
CHILE 3.625 10/30/42	USD	5.34	79.11	531.9%	13.33
COLOM 11.85 03/09/28	USD	7.70	115.92	772.7%	3.80
COLOM 10.375 01/28/33	USD	8.35	112.57	802.7%	6.39
COLOM 7.375 09/18/37	USD	8.24	92.54	814.6%	8.76
COLOM 6.125 01/18/41	USD	8.55	78.14	828.5%	9.89
MEX 4 10/02/23	MXV	4.34	89.59	437.0%	7.57
MEX5.55 01/45	USD	6.18	92.60	612.4%	12.27

Source: Refinitiv

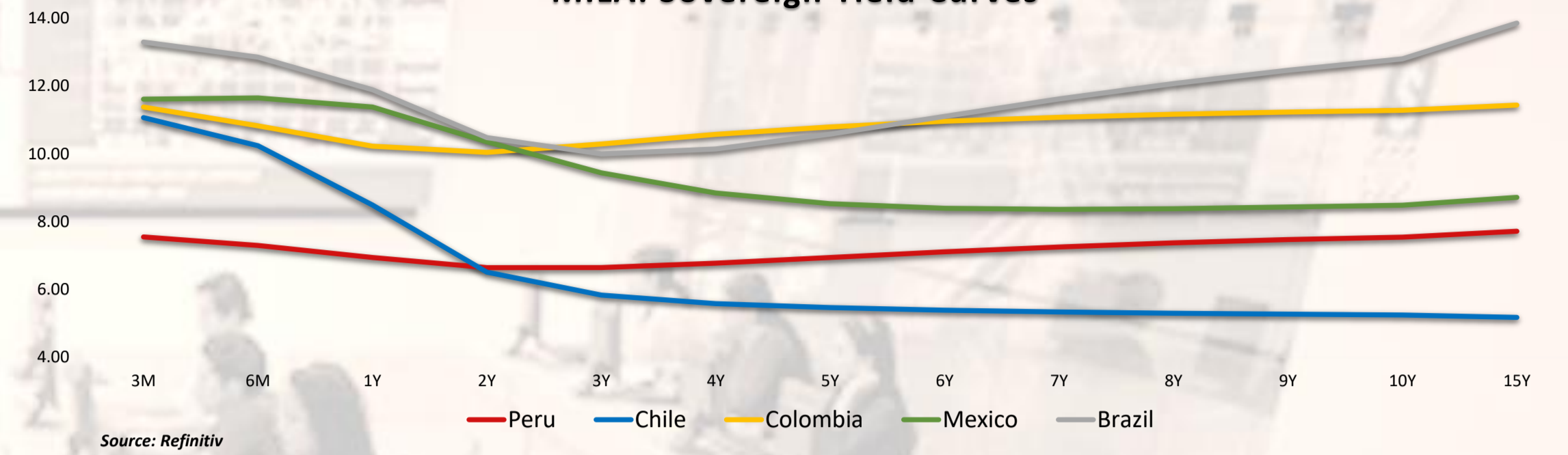
Capital Market Laboratory Coordinator: MS Javier Penny Pestana  
Collaboration: Nadia Contreras, Nicolás Díaz, Joseph Martinez y Marcelo Cossar  
email: pulsobursatil@ulima.edu.pe

The content of this document is just for informational purposes. The information and opinions expressed should not be consider as recommendations for future decisions. Under any circumstances, the Capital Market Laboratory of University of Lima will be responsible for the use of the statements in this document.

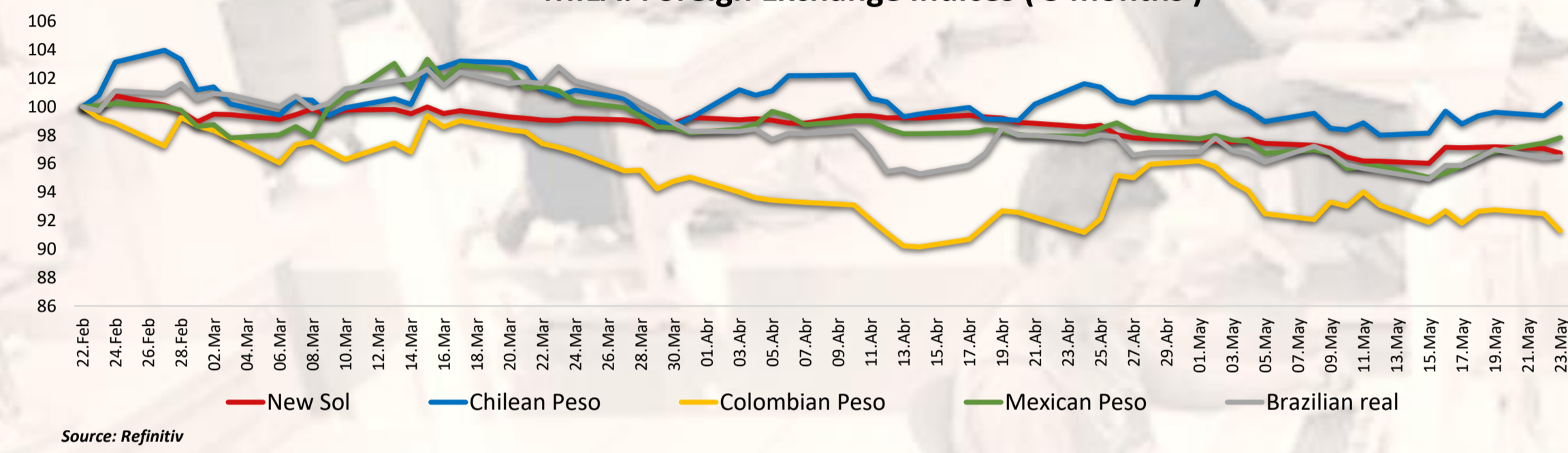
**MILA: Intraday Evolution**



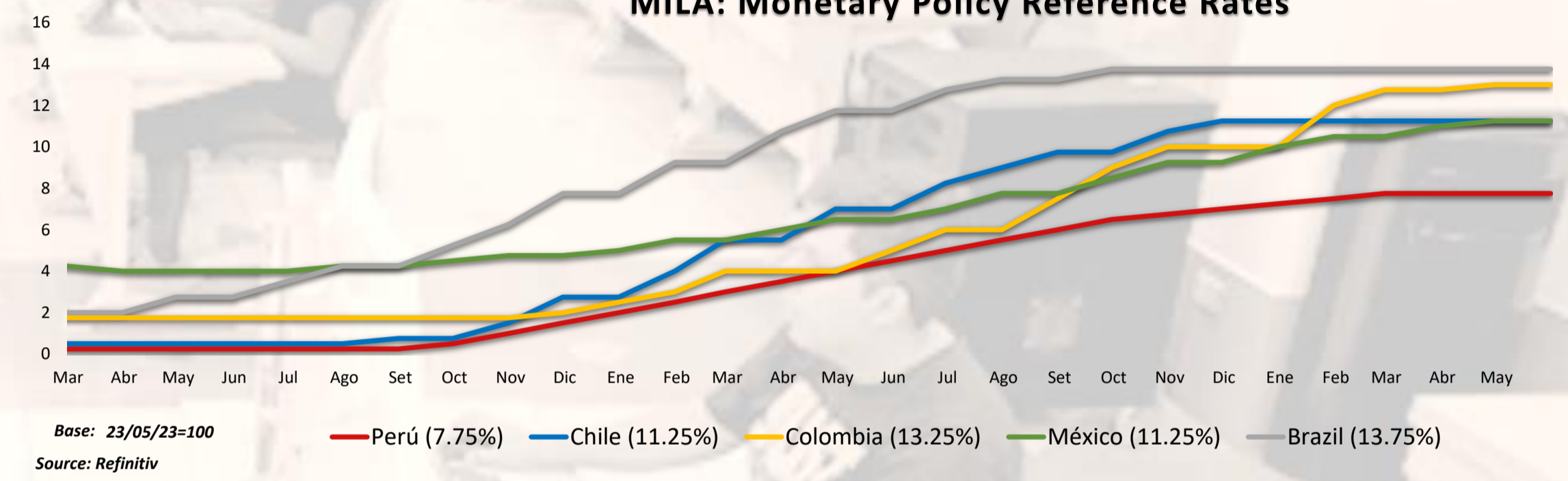
**MILA: Sovereign Yield Curves**



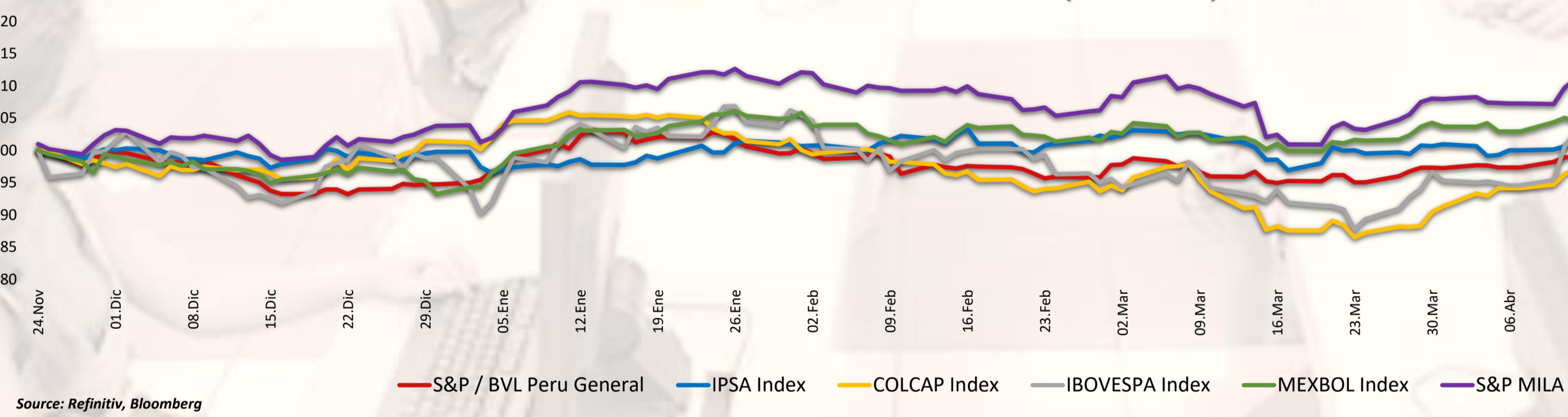
**MILA: Foreign Exchange Indices ( 3 months )**



**MILA: Monetary Policy Reference Rates**



**MILA: Stock Indices (6 months)**



Capital Market Laboratory Coordinator: MS Javier Penny Pestana  
Collaboration: Nadia Contreras, Níkolás Díaz, Joseph Martínez y Marcelo Cossar  
email: pulsobursatil@ulima.edu.pe

## WORLD

### United States:

The US market closed with negative yields. The DOW JONES closed the day with losses, in a context where stocks fell sharply, but short-term Treasury bond yields had a significant rise given investors' nervousness about the debt ceiling. The S&P 500 index also ended with lower yields, investors are also waiting for the Federal Reserve meeting on May 2-3 to assess the central bank's next move. In addition, Chevron rose 2.9% after HSBC upgraded the company's shares to buy from hold. Finally, the NASDAQ index ended the day lower. Where Zoom shares fell 8% despite reporting upbeat EPS and guidance in line with expectations. Thus, DOW JONES -0.69%, S&P 500 -1.12% and NASDAQ -1.26% ended the day with negative results.

### Europe:

100 -0.10%; CAC 40 -1.33%; DAX -0.44%; STOXX 600 -0.60% terminaron con resultados negativos. Major European indices ended the session with negative returns, due to growing concerns about weak customer demand and rising interest rates. The pan-European STOXX 600 index closed lower, as the Eurozone's HCOB Flash Composite PMI index fell to a three-month low at 53.3, below market expectations of 53.7, according to a preliminary estimate. Also, manufacturing activity contracted at a faster pace, employment slowed and average prices for goods and services posted the smallest increase in 25 months. The UK market, as reflected in the FTSE 100, closed in negative terms as the solid expansion of private sector output was offset by a decline in production caused by weak order books and reduced demand. Similarly, the German market, reflected in the DAX index closed in negative territory, Germany's HCOB manufacturing PMI index fell to 42.9, as production contracted due to a deep decline in new orders. In addition, business confidence in the outlook turned negative for the first time in five months. The French market closed with a negative margin, even though the preliminary PMI index revealed that French business activity continued to grow in May, for the fourth consecutive month. However, the pace of expansion was the slowest in the current sequence and weaker than analysts expected. Thus, FTSE 100 -0.10%; CAC 40 -1.33%; DAX -0.44%; STOXX 600 -0.60% ended with negative results.

### Asia:

Major Asian indices closed with negative returns as investors remain concerned about China's post-crisis recovery and geopolitical risks. The Chinese market ended lower as most of the recently released data, such as industrial production, retail sales and fixed asset investment, came in below market expectations. Technology stocks led the losers. Elsewhere, the Hang Seng index closed with losses, erasing the previous session's gains and nearing its lowest close in two months, amid widespread losses in which technology, financial, consumer and real estate stocks fell more than 1%. Semiconductor manufacturing posted heavy losses (-6.6%), along with CK Hutchison Hlds. (-5.3%), China Hongqiao Group (-5.3%), CK Asset Hlds. (-5%), and Country Garden Hlds. (-3.8%). The South Korean market ended on a positive note, with stocks reaching their highest level in three weeks, as concerns about global banking problems following the SVB acquisition deal eased. The Japanese market closed in negative territory, however, thanks to inflation expectations, the South Korean Composite Consumer Sentiment Index rose from 95.1 to 98. The Australian market ended with losses as data showed manufacturing and services activity declined. Notable losses were recorded in index heavyweights such as BHP Group (-0.7%), Newcrest Mining (-2%), Pilbara Minerals (-0.8%) and Ramsay Health Care (-1.6%). Thus, NIKKEI -0.42%; HANG SENG -1.25%; CSI 300 -1.41%; S&P/ASX 200 -0.05%; KOSPI +0.84%, SHANGHAI COMPOSITE -1.52% ended with negative returns.

### ETFs

	Curr.	Close	1 D	5 D	1 M	YTD	Exchange
SPDR S&P 500 ETF TRUST	USD	414.09	-1.12%	0.94%	1.07%	-13.29%	PCQ
ISHARES MSCI EMERGING MARKETS ETF	USD	38.69	-1.55%	-0.74%	-2.47%	-21.09%	PCQ
ISHARES IBOXX \$ HIGH YIELD CORPORATE BOND ETF	USD	74.14	-0.52%	0.35%	-1.05%	-14.54%	PCQ
FINANCIAL SELECT SECTOR SPDR FUND	USD	32.28	-1.16%	1.32%	-0.19%	-20.43%	PCQ
VANECK GOLD MINERS ETF	USD	31.65	-0.69%	-4.12%	-8.47%	0.86%	PCQ
ISHARES RUSSELL 2000 ETF	USD	177.42	-0.47%	2.98%	0.16%	-21.14%	PCQ
SPDR GOLD SHARES	USD	183.43	0.12%	-0.78%	-1.53%	8.17%	PCQ
ISHARES 20+ YEAR TREASURY BOND ETF	USD	101.03	0.29%	-1.80%	-5.58%	-29.69%	NMQ
INVESTCO QQQ TRUST SERIES 1	USD	333.36	-1.27%	1.90%	5.55%	-15.92%	NMQ
ISHARES BIOTECHNOLOGY ETF	USD	131.11	-0.03%	1.60%	0.31%	-11.59%	NMQ
ENERGY SELECT SECTOR SPDR FUND	USD	80.16	1.07%	4.13%	-7.30%	35.41%	PCQ
PROSHARES ULTRA VIX ST FUTURES ETF	USD	3.32	2.47%	-4.87%	-22.43%	-71.79%	BTQ
UNITED STATES OIL ETF	USD	64.87	1.50%	3.73%	-8.72%	16.69%	PCQ
ISHARES MSCI BRAZIL ETF	USD	29.81	-0.20%	0.81%	3.51%	9.43%	PCQ
SPDR S&P OIL & GAS EXP & PRODUCTION ETF	USD	125.50	0.26%	6.53%	-6.93%	19.83%	PCQ
UTILITIES SELECT SECTOR SPDR FUND	USD	65.90	-0.35%	-1.13%	-5.49%	-6.72%	PCQ
ISHARES US REAL ESTATE ETF	USD	82.19	-1.07%	0.26%	-3.40%	-28.56%	PCQ
SPDR S&P BIOTECH ETF	USD	87.49	0.02%	2.89%	13.80%	-21.43%	PCQ
ISHARES IBOXX \$ INVESTMENT GRADE CORP BOND ETF	USD	106.79	0.21%	-0.38%	-2.73%	-18.62%	PCQ
ISHARES JP MORGAN USD EMERGING MARKETS BOND ETF	USD	84.26	0.12%	-0.30%	-1.71%	-21.92%	NMQ
REAL ESTATE SELECT SECT SPDR FUND	USD	36.00	-1.23%	-0.08%	-3.92%	-29.59%	PCQ
ISHARES CHINA LARGE-CAP ETF	USD	27.49	-3.03%	-4.35%	-5.89%	-23.40%	PCQ
CONSUMER STAPLES SPDR FUND	USD	74.22	-0.74%	-2.70%	-1.80%	-4.38%	PCQ
VANECK JUNIOR GOLD MINERS ETF	USD	37.92	-0.16%	-3.07%	-9.41%	-8.32%	PCQ
SPDR BLOOMBERG HIGH YIELD BOND ETF	USD	90.94	-0.49%	0.28%	-1.12%	-16.03%	PCQ
VANGUARD REAL ESTATE INDEX FUND ETF	USD	80.13	-0.94%	0.36%	-3.60%	-30.30%	PCQ
DIREXION DAILY GOLD MINERS INDEX BULL 2X SHARES	USD	39.40	-1.40%	-7.90%	-17.37%	-19.80%	PCQ
PROSHARES ULTRASHORT 20+ YEAR TREASURY	USD	30.79	-0.45%	3.81%	12.05%	71.92%	PCQ
ISHARES MSCI EAFE ETF	USD	72.60	-1.47%	-0.55%	0.65%	-8.84%	PCQ
ISHARES PREFERRED AND INCOME SECURITIES ETF	USD	30.11	-0.26%	2.31%	-3.68%	-22.68%	NMQ
WISDOMTREE JAPAN HEDGED EQUITY ETF	USD	76.11	-1.10%	1.78%	7.35%	18.24%	PCQ
GRAYSCALE BITCOIN TRUST (BTC)	USD	14.33	0.99%	-2.05%	-19.13%	-58.66%	PNK

Source: Refinitiv

### Main Indexes

	Close	1 D	5 D	1 M	YTD	Market Cap. (US\$ Mill.)
▲ Dow Jones (EEUU)	51.96	0.37%	1.76%	-7.53%	-11.04%	180,476
▼ Standard & Poor's 500 (EEUU)	4,145.58	-1.12%	0.87%	0.89%	-13.52%	36,480
▼ NASDAQ Composite (EEUU)	12,560.25	-1.26%	1.76%	4.39%	-19.60%	21,390
▼ Stoxx EUROPE 600 (Europa)	466.10	-0.60%	0.30%	0.93%	-5.65%	405,616,316
▼ DAX (Alemania)	29.77	-1.29%	0.57%	0.68%	-8.78%	168
▼ FTSE 100 (Reino Unido)	7,762.95	-0.10%	0.15%	-0.29%	3.43%	393
▼ CAC 40 (Francia)	7,378.71	-1.33%	-0.37%	-0.16%	0.84%	3,509,256
▼ IBEX 35 (España)	9,267.00	-0.41%	0.82%	0.32%	5.36%	606,885
▼ MSCI AC Asia Pacific Index	513.54	-0.50%	-0.10%	-2.38%	-18.78%	21,608
▼ HANG SENG (Hong kong)	19,431.25	-1.25%	-2.74%	-5.15%	-16.57%	21,790
▼ SHANGHAI SE Comp. (China)	3,246.24	-1.52%	-1.36%	-2.03%	-10.63%	46,149,725
▼ NIKKEI 225 (Japón)	30,957.77	-0.42%	3.74%	10.87%	5.65%	543,432
▼ S&P / ASX 200 (Australia)	7,259.90	-0.05%	0.35%	-0.68%	-4.35%	33,075
▲ KOSPI (Corea del Sur)	2,567.55	0.41%	3.52%	0.77%	-14.11%	5,665,730

\*Legend: Variation 1D: 1 day; 5D: 5 days; 1M: 1 Month; YTD: Var% to date

Source: Refinitiv, Bloomberg

### Equity

#### United States (Stocks from SPX Index)

Largest Gains	Curr.	Price	▲%	Exchange	Largest Losses	Curr.	Price	▼%	Exchange
MODERNA INC/d	USD	137.75	8.69%	NSQ	LAS VEGAS SAND/d	USD	55.71	-6.35%	NYQ
SIGNATURE BK O/d	USD	0.1349	8.01%	PNK	UNIV HEALTH SV/d	USD	126.93	-6.14%	NYQ
ALBEMARLE/d	USD	216.07	4.63%	NYQ	ALIGN TECH INC/d	USD	282.55	-6.08%	NSQ
AMER INTL GROU/d	USD	55.77	3.35%	NYQ	WYNN RESORTS/d	USD	101.88	-6.02%	NSQ
CLEANTECH LITH/d	GBp	38	3.26%	LSE	AUTOZONE INC/d	USD	2463.41	-5.97%	NYQ

Source: Refinitiv

#### Europe (Stocks from STOXX EUROPE 600)

Largest Gains	Curr.	Price	▲%	Exchange	Largest Losses	Curr.	Price	▼%	Exchange
ENGLOBAL CORP/d	USD	NAQ	0.00%	0.16804823	CARDO DGN HL O/d	USD	NAQ	0.00%	-0.0980392
MONYLIION INC O/d	USD	NYQ	0.00%	0.11295034	HEICO CORP/d	USD	NYQ	0.00%	-0.0788532
CASTELLUM AB/d	SEK	STO	0.00%	0.06503667	JULIUS BAER N/d	CHF	SWX	0.00%	-0.0738618
TRELLEBORG B/d	SEK	STO	0.00%	0.06416097	RS GROUP/d	GBp	LSE	0.00%	-0.0698874
VONOVIA SE/d	EUR	GER	0.00%	0.05569764	NORTHGOLD/d	SEK	STO	0.00%	-0.0682635

Source: Refinitiv

### Currency

	Price	1 D*	5 D*	1 M*	YTD*
▲ Euro	1.0771	0.03%	-0.83%	-1.27%	-4.55%
▼ Yen	138.57	-0.01%	1.61%	3.68%	19.31%
▲ Yuan	7.0556	0.00%	1.10%	2.45%	10.73%
▼ Won Coreano	1317.11	-0.16%	-1.88%	-0.37%	9.99%
▲ Libra Esterlina	1.2418	0.06%	-0.54%	-0.05%	-8.23%
▲ Dólar de Hong Kong	7.837	0.00%	-0.01%	-0.16%	0.56%
▲ Dólar Australiano	0.661	0.02%	-0.68%	-0.60%	-8.68%

\*Legend: Variation 1D: 1 day; 5D: 5 days; 1M: 1 Month; YTD: Var% to date

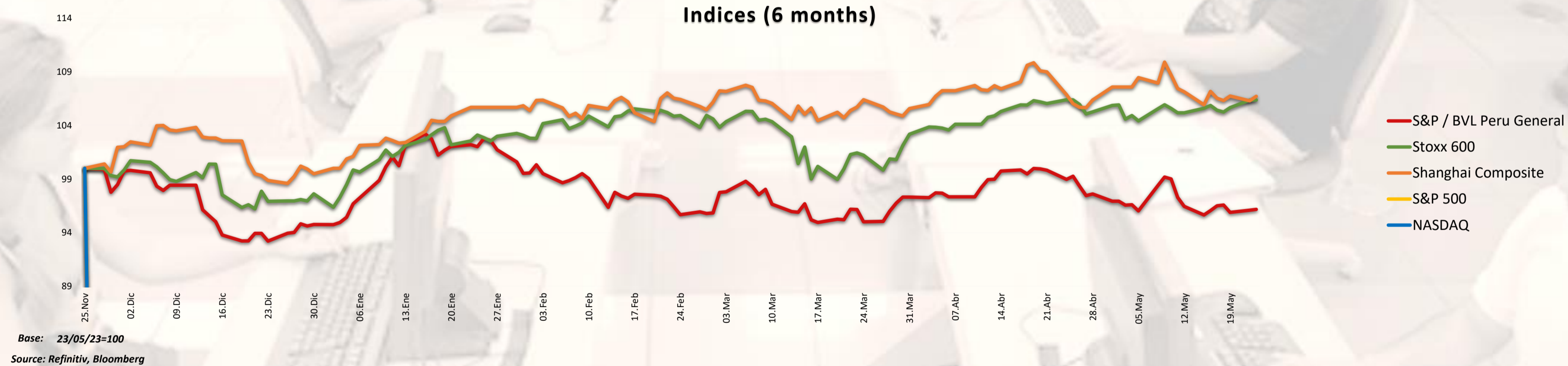
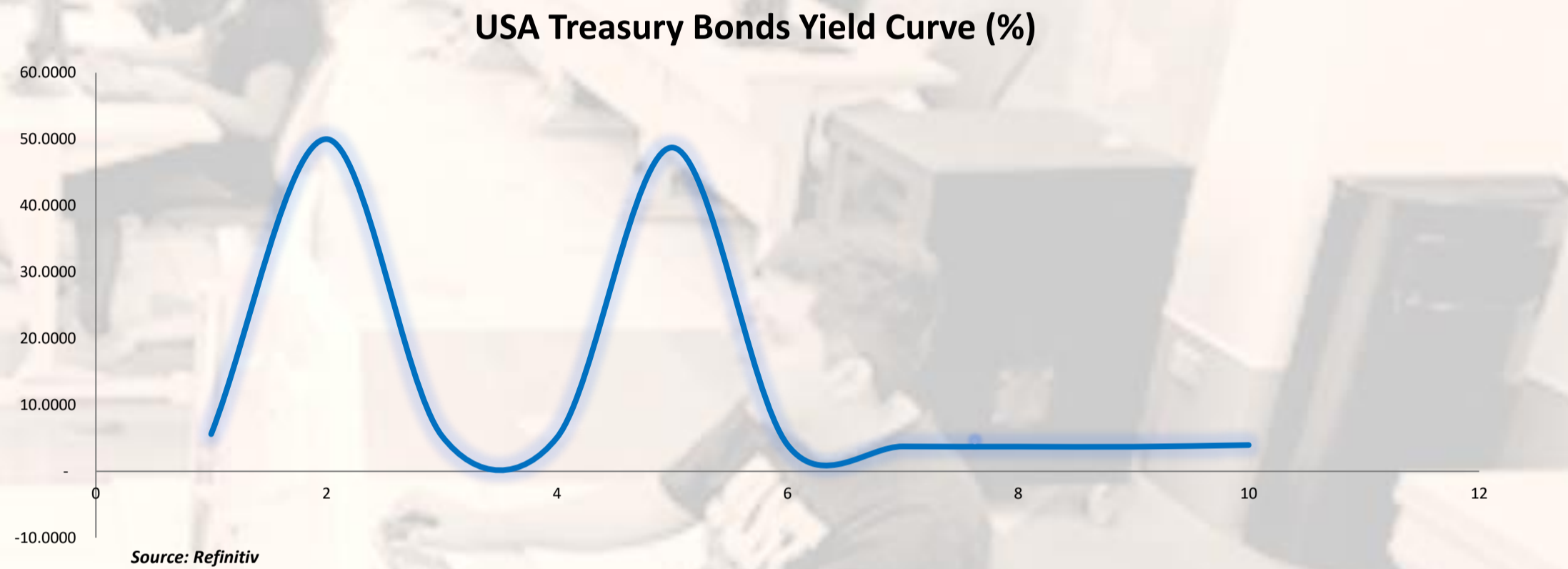
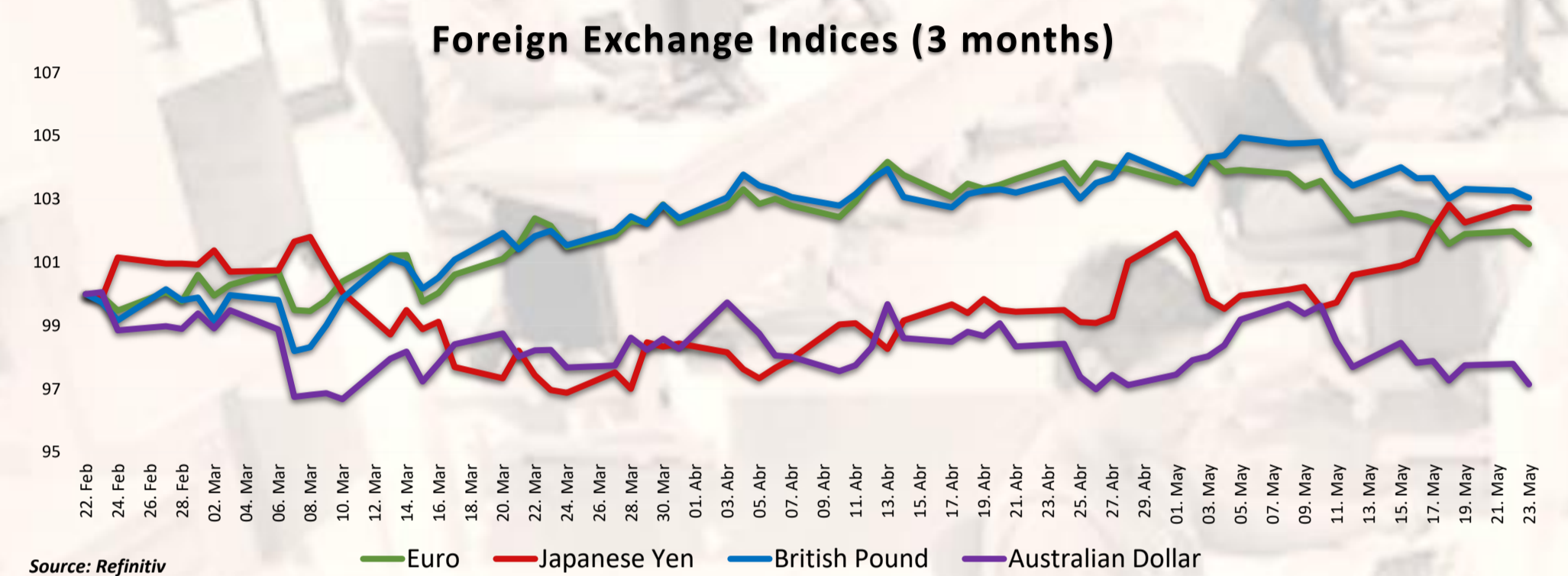
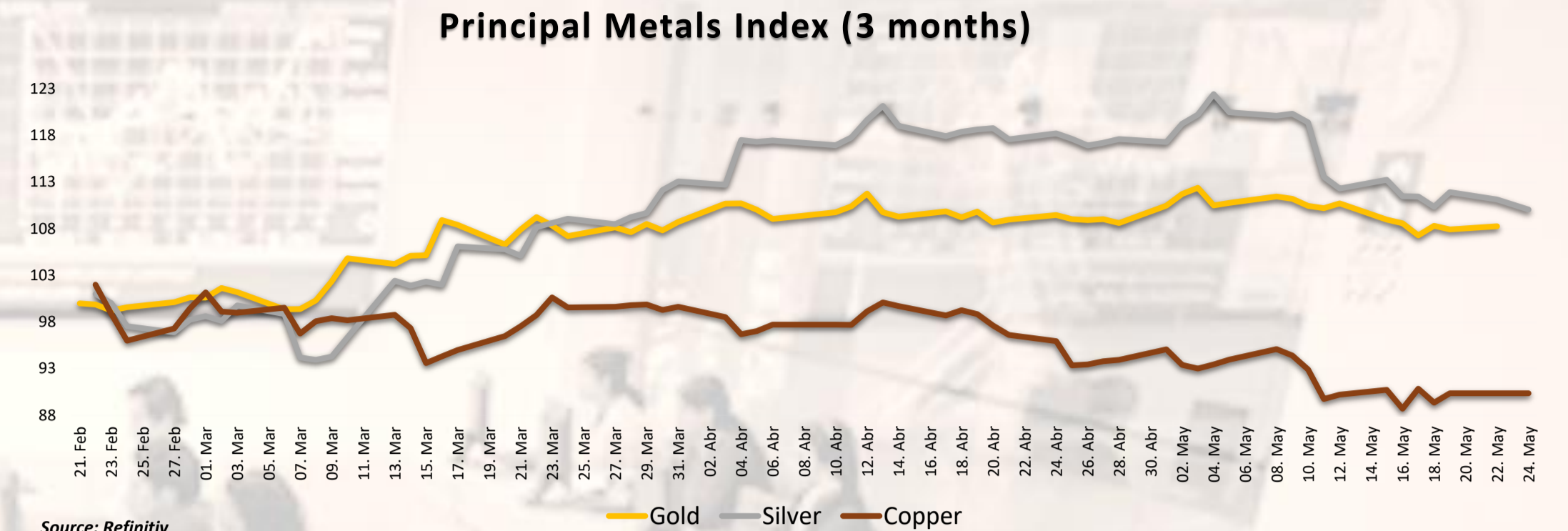
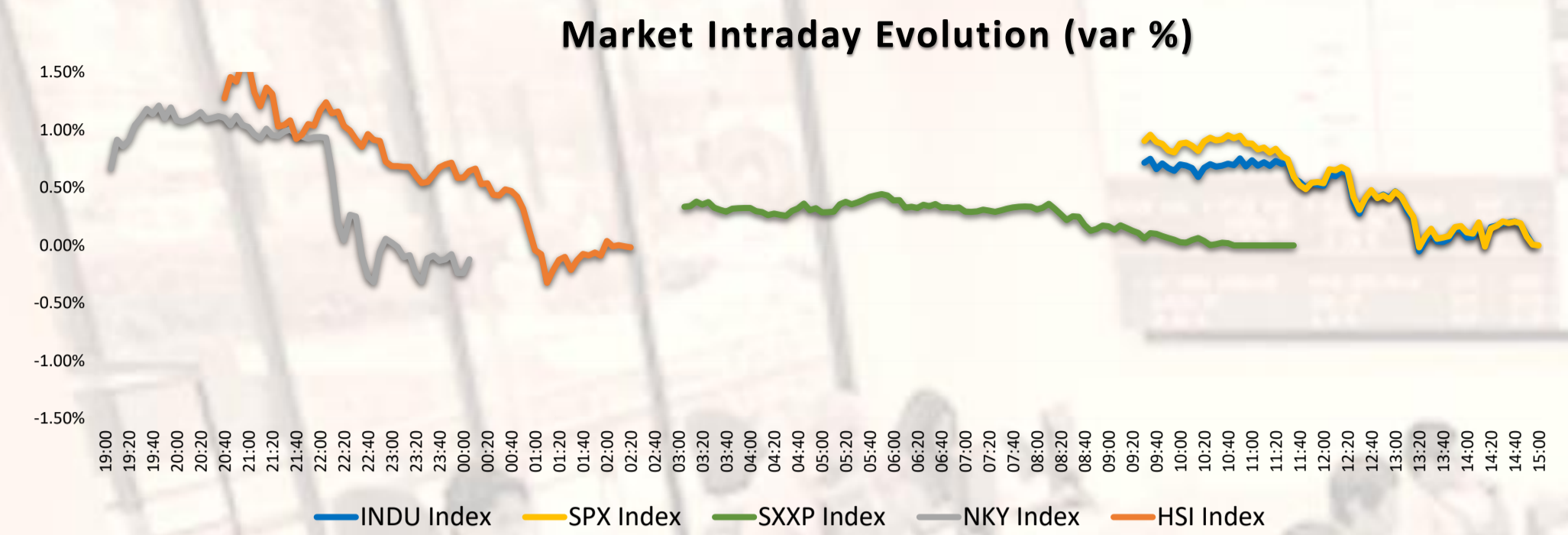
### Commodities

	Price	1 D*	5 D*	1 M*	YTD*
Oro (US\$ Oz. T) (LME)	8061.53	0.00%	-0.16%	-8.92%	-17.64%
Plata (US\$ Oz. T) (LME)	2426	0.00%	-2.16%	-12.43%	-33.64%
Cobre (US\$ TM) (LME)	72.91	1.19%	2.92%	-10.14%	6.02%
Zinc (US\$ TM) (LME)	25115	0.00%	1.21%	6.03%	-36.81%
Petroleo WTI (US\$ Barril) (NYM)	2092	0.00%	2.99%	-0.59%	-10.15%
Estaño (US\$ TM) (LME)	25.81	-0.69%	-1.00%	8.99%	52.00%
Plomo (US\$ TM) (LME)	25.81	-0.69%	-1.00%	8.99%	52.00%
Azúcar #11 (US\$ Libra) (NYB-ICE)	3016	-0.23%	0.70%	3.89%	20.69%
Cacao (US\$ TM) (NYB-ICE)	0	0.00%	0.00%	0.00%	0.00%
Café Arábica (US\$ TM) (NYB-ICE)	0	0.00%	0.00%	0.00%	0.00%

\*Legend: Variation 1D: 1 day; 5D: 5 days; 1M: 1 Month; YTD: Var% to date

Capital Market Laboratory Coordinator: MS Javier Penny Pestana  
Collaboration: Nadia Contreras, Nikolas Díaz, Joseph Martínez y Marcelo Cossar  
email: pulsobursatil@ulima.edu.pe

The content of this document is just for informational purposes. The information and opinions expressed should not be consider as recommendations for future decisions. Under any circumstances, the Capital Market Laboratory of University of Lima will be responsible for the use of the statements in this document.



Capital Market Laboratory Coordinator: MS Javier Penny Pestana  
Collaboration: Nadia Contreras, Nikolas Díaz, Joseph Martinez y Marcelo Cossar  
email: pulsobursatil@ulima.edu.pe

**RANKING STOCKS LIMA**

Ticket	Currency	Price	1 D*	5 D*	1 M*	YTD*	Frequency	Volume	Beta	Dividend Yield (%)	Price Earning	Capitalización Bursátil (M US\$)	Sector	Index Weight
▲ ALICORCL.LM	S/.	5.99	0.00%	-2.12%	-5.29%	-7.39%	0.00%	0	0.62	4.64	8.40	30,056	Industrial	18.40%
▲ BACKUSI1.LM	S/.	25.50	0.00%	0.00%	3.48%	9.46%	90.00%	0	0.41	6.41	94.56	22,269	Industriales	12.11%
▲ BAP	US\$	133.28	0.42%	-1.12%	2.39%	-1.75%	90.00%	373,355	0.95	5.12	7.18	30,169,190	Diversas	-7.95%
▲ BVN	S/.	1.64	0.00%	0.61%	11.33%	13.24%	85.00%	0	0.71	7.90	0.00	9,892	Bancos y Financieras	35.30%
▲ CASAGRC1.LM	S/.	1.64	0.00%	0.61%	11.33%	13.24%	85.00%	0	0.71	7.90	0.00	9,892	Bancos y Financieras	35.30%
▲ BBVAC1.LM	S/.	1.64	0.00%	0.61%	11.33%	13.24%	85.00%	0	0.71	7.90	0.00	9,892	Bancos y Financieras	35.30%
▲ CORAREI1.LM	S/.	1.18	0.00%	-1.67%	-5.90%	-15.31%	80.00%	0	1.06	4.42	0.00	3	Industriales	-15.78%
▼ CPAC.K	US\$	5.42	-0.46%	-1.09%	6.90%	5.00%	90.00%	1,839	0.50	10.50	18.80	9,917	Industriales	-4.22%
▲ CVERDEC1.LM	US\$	29.70	0.00%	2.06%	-3.53%	1.98%	85.00%	0	1.14	2.40	8.03	15,710	Mineras	-0.98%
▼ ENGEPEC1.LM	S/.	4.19	-0.24%	0.24%	6.88%	21.72%	90.00%	0	0.76	9.20	10.87	17,964	Servicios Públicos	70.64%
▲ ENDISPC1.LM	US\$	29.70	0.00%	2.06%	-3.53%	1.98%	85.00%	0	1.14	2.40	8.03	15,710	Mineras	-0.98%
▲ FERREYCL.LM	S/.	2.10	0.00%	0.48%	1.71%	-0.99%	90.00%	0	0.99	11.36	4.86	10,973	Diversas	4.74%
▲ AENZACL1.LM	S/.	0.57	0.00%	0.00%	-6.56%	-31.33%	65.00%	0	0.73	0.00	0.00	81	Diversas	-46.56%
▲ IFS	US\$	22.01	0.18%	-0.18%	-4.35%	-6.34%	90.00%	17,764	1.06	5.37	5.56	359,649	Diversas	-20.14%
▲ INRETC1.LM	US\$	32.10	0.00%	0.00%	0.58%	-0.22%	80.00%	0	0.75	2.51	13.59	99	Diversas	1.99%
▲ LUSURCL.LM	S/.	14.70	0.00%	2.97%	3.82%	0.03%	85.00%	0	0.57	2.42	0.00	39	Servicios Públicos	5.59%
▲ MINSURI1.LM	S/.	3.52	0.00%	-3.30%	-8.09%	-0.85%	90.00%	0	1.10	10.70	0.00	58,535	Mineras	-24.03%
▼ SCCO.K	US\$	66.66	-3.93%	-4.00%	-13.86%	10.38%	90.00%	1,907,364	1.25	5.76	17.26	61,085,494	Mineras	9.33%
▲ SIDERCL.LM	S/.	1.30	0.78%	-2.26%	-12.30%	-19.25%	85.00%	0	0.90	41.72	0.00	877	Industriales	-2.39%
▲ UNACEMC1.LM	S/.	2.77	0.00%	0.00%	8.74%	9.58%	10.00%	0	0.02	3.49	0.00	396	Diversas	10.95%
▲ VOLCABC1.LM	S/.	2.77	0.00%	0.00%	8.74%	9.58%	10.00%	0	0.02	3.49	0.00	396	Diversas	10.95%
▲ BROCALC1.LM	S/.	1.64	0.00%	0.61%	11.33%	13.24%	85.00%	0	0.71	7.90	0.00	9,892	Bancos y Financieras	35.30%
▲ CORAREC1.LM	S/.	1.64	0.00%	0.61%	11.33%	13.24%	85.00%	0	0.71	7.90	0.00	9,892	Bancos y Financieras	35.30%
▼ ENGIEC1.LM	S/.	3.50	-0.28%	-10.26%	-78.52%	-48.58%	90.00%	0	0.90	8.24	5.12	44,298	Servicios Públicos	-2.74%
▲ GBVLACL1.LM	S/.	0.57	0.00%	0.00%	-6.56%	-31.33%	65.00%	0	0.73	0.00	0.00	81	Diversas	-46.56%

Quantity of Shares: 25  
Source: Refinitiv

Up  
Down  
Hold

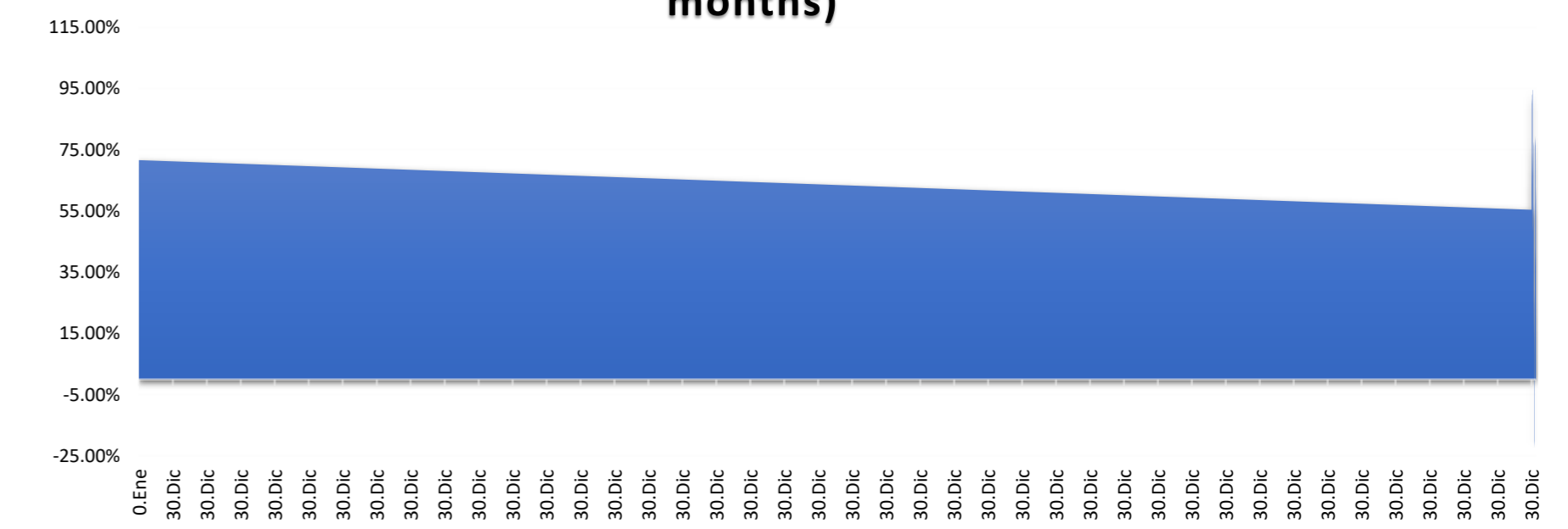
\*\* PER is used in the stock market and original currency of the instrument  
\*Legend: Variation 1D: 1 day; 5D: 5 days; 1M: 1 Month; YTD: Var% to date

**Sectorial Indices**

	Close	1 D*	5 D*	1 M*	YTD*	Beta
S&P/BVL Consumer Index	1,211.72	-0.07%	-0.91%	-3.09%	-1.77%	0.27
S&P/BVL Industrial Index	233.10	-0.14%	0.36%	-0.65%	-5.57%	0.28
S&P/BVL Financials Index	960.36	0.39%	3.29%	2.91%	0.47%	1.44
S&P/BVL Construction Index	224.47	-0.20%	0.30%	-0.30%	-7.66%	0.22
S&P/BVL Public Services Index	1,114.88	-0.19%	-7.23%	-0.03%	44.01%	0.29
S&P/BVL Mining Index	402.34	-2.65%	-5.34%	-15.48%	1.85%	1.57
S&P/BVL Electric Utilities Index	1,088.40	-0.19%	-7.23%	-0.03%	44.01%	0.29

\*Legend: Variation 1D: 1 day; 5D: 5 days; 1M: 1 Month; YTD: Var% to date  
Source: Refinitiv

**Correlation Yield. Mining Index vs. London Metal Index (3 months)**



Source: Refinitiv

**Latin America Credit Rating**

**RISK RATINGS**

Country	Moody/s	Fitch	S&P
Peru	A	BBB	BBB
Mexico	Baa2	BBB-	BBB
Venezuela	WR	WD	NR
Brazil	BBB	BB-	BB-
Colombia	BB+	BB+	BB+
Chile	AA-	A-	A
Argentina	CCC	WD	CCC-
Panama	WD	BBB-	BBB

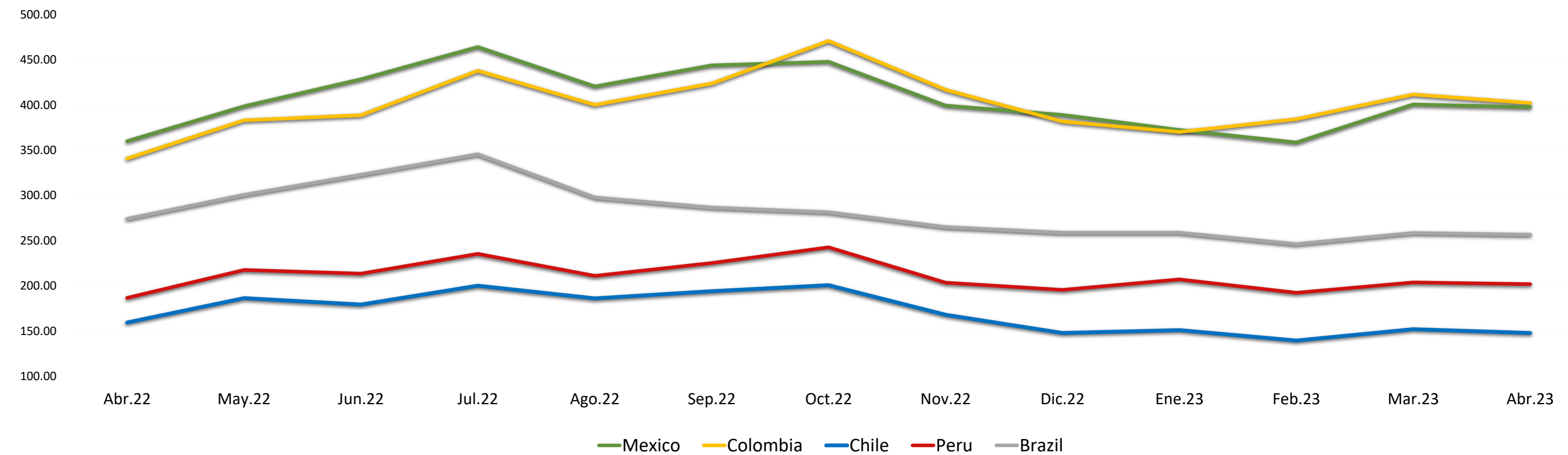
Source: Refinitiv, Bloomberg

**Legend**

	Moody/s	Fitch	S&P
Prime	Aaa	AAA	AAA
High Grade	Aa1	AA+	AA+
	Aa2	AA	AA
	Aa3	AA-	AA-
High Grade Medium	A1	A+	A+
	A2	A	A
	A3	A-	A-
Low Grade Medium	Baa1	BBB+	BBB+
	Baa2	BBB	BBB
	Baa3	BBB-	BBB-
Non-Investment Grade Speculative	Ba1	BB+	BB+
	Ba2	BB	BB
	Ba3	BB-	BB-
Highly Speculative	B1	B+	B+
	B2	B	B
	B3	B-	B-
Substantial Risk	Caa1	CCC+	CCC+
	Caa2	CCC	CCC
	Caa3	CCC-	CCC-
Extremely Speculative	Ca	CC	CC
		C	C
Low Expectation of Payment		RD	SD
Default		DDD	
		DD	D
		D	
Unclassified	WR		NR

Source: Refinitiv, Bloomberg

**LATAM Country Risk (bps)**



	Abr.22	May.22	Jun.22	Jul.22	Ago.22	Sep.22	Oct.22	Nov.22	Dic.22	Ene.23	Feb.23	Mar.23	Abr.23
Peru	186.67	217.55	213.55	235.43	211.00	225.27	242.59	203.41	195.50	207.05	192.30	203.83	201.90
Brazil	274.06	300.64	322.82	345.48	297.70	286.56	281.30	264.90	258.64	258.64	246.10	258.35	256.55
Chile	159.44	186.32	179.32	200.10	186.09	194.05	200.69	167.97	147.82	150.95	139.45	152.00	147.75
Colombia	340.78	383.05	388.73	437.86	400.26	423.83	470.84	416.81	381.77	370.18	384.35	411.61	402.15
Mexico	360.00	398.59	428.41	464.10	420.43	443.77	447.72	399.31	389.00	372.32	358.55	400.70	397.60

Source: BCRP

Capital Market Laboratory Coordinator: MS Javier Penny Pestana  
Collaboration: Nadia Contreras, Nikolas Díaz, Joseph Martinez y Marcelo Cossar  
email: pulsoBursatil@ulima.edu.pe