

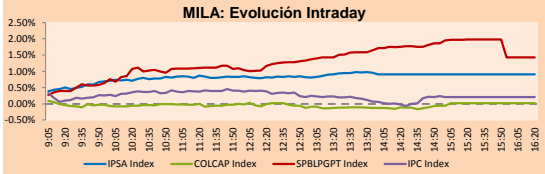


PULSO BURSÁTIL

Lima, October 3, 2017

Main Indices	Close	1 D	5 D	1 M	YTD	Market Cap. (US\$ bill)
▲ IPISA (Chile)	5,420.14	0.91%	2.96%	5.29%	30.56%	205.69
▲ IGPA (Chile)	27,086.96	0.93%	3.02%	5.31%	30.64%	235.22
▲ IGBC (Colombia)	11,123.93	0.19%	0.62%	-1.01%	10.07%	94.44
▲ COLCAP (Colombia)	1,487.92	0.03%	0.45%	-0.90%	10.08%	87.00
▲ S&P/BVL (Perú)*	19,065.87	1.42%	4.58%	6.93%	22.48%	96.29
▲ S&P/BVL SEL (Perú)	354.27	1.92%	4.34%	7.56%	18.89%	75.83
▲ S&P/BVL LIMA 25	30,222.96	2.41%	7.52%	14.43%	28.18%	89.58
▲ IPC (México)	50,615.29	0.23%	0.51%	-0.41%	10.89%	324.55
▲ S&P MILA 40	699.50	1.31%	2.25%	1.99%	25.88%	283.23

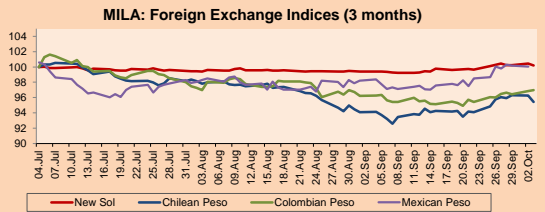
* Market Cap. Of the last price *Legend: Variation 1D: 1 day; 5D: 5 days; 1M: 1 Month; YTD: Var%12/31/16 to date



Source: Bloomberg

Currency	Price	1D*	5D*	30 D*	YTD*
▲ New Sol (PEN)	3,2635	-0.26%	-0.09%	0.78%	-2.76%
▲ Chilean Peso (CLP)	633.38	-0.85%	-0.31%	1.45%	-5.52%
▲ Colombian Peso (COP)	2,953.56	0.12%	1.02%	0.76%	-1.61%
▲ Mexican Peso (MXN)	18.21	-0.10%	1.43%	2.23%	-12.14%

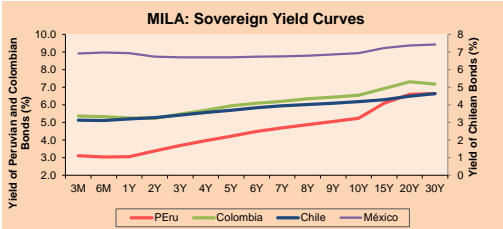
*Legend: Variation 1D: 1 day; 5D: 5 days; 1M: 1 Month; YTD: Var%12/31/16 to date



Base: 04/07/17=100

Source: Bloomberg

Instrument	Currency	Price	Bid Yield (%)	Ask Yield (%)	Duration
PERU 4.125 08/25/2027	USD	110.2	2.95	2.91	8.25
PERU 7.125 03/30/19	USD	108.375	1.50	1.32	1.43
PERU 7.35 07/21/25	USD	131.283	2.87	2.82	6.21
PERU 8.75 11/21/33	USD	157.19	3.96	3.90	10.09
PERU 6.55 03/14/37	USD	134.69	3.99	3.95	11.91
PERU 5.625 11/18/2050	USD	126.44	4.16	4.14	16.85
CHILE 2.25 10/30/22	USD	99.955	2.29	2.23	4.75
CHILE 3.875 08/05/20	USD	105.607	1.89	1.78	2.68
CHILE 3.625 10/30/2042	USD	99.322	3.69	3.65	16.42
COLOM 11.75 02/25/20	USD	122.577	2.06	1.98	2.14
COLOM 11.85 03/09/28	USD	171.204	3.64	3.56	7.16
COLOM 10.375 01/28/33	USD	155.75	5.12	5.05	9.14
COLOM 7.375 09/18/37	USD	132.443	4.84	4.81	11.74
COLOM 6.125 01/18/41	USD	118.215	4.83	4.80	13.23
MEX 4 10/02/23	USD	105.835	2.95	2.91	5.37
MEX5.55 01/45	USD	114.993	4.594	4.569	14.98



Source: Bloomberg

Equity	Exchange	Amt.	Price	▲%
Largest gains				
PUERTO	Santia.	CLP	800.00	26.98
SIPSA	Santia.	CLP	250.00	19.05
ATACOCB1	Lima	PEN	0.67	15.52
ATACOAC1	Lima	PEN	0.75	15.38

Per Turnover	Exchange	Amount (US\$)
CENCOSUD	Santia.	25,581,515
FALABELLA	Santia.	23,959,029
SQM-B	Santia.	13,374,470
PFDVAVNDA	Colomb.	11,839,194
ECL	Santia.	8,689,905

Largest losses	Exchange	Amt.	Price	▼%
BESALCO	Santia.	CLP	628.29	-4.87
SCHWAGER	Santia.	CLP	0.84	-4.55
HITES	Santia.	CLP	664.55	-2.84
CINTAC	Santia.	CLP	330.00	-1.49

Per Volume	Exchange	Volume
ORO BLANCO	Santia.	229,815,957
BVC	Colomb.	110,679,331
BSANTANDER	Santia.	103,550,696
NORTEGRAN	Santia.	79,670,994
VAPORES	Santia.	61,587,819

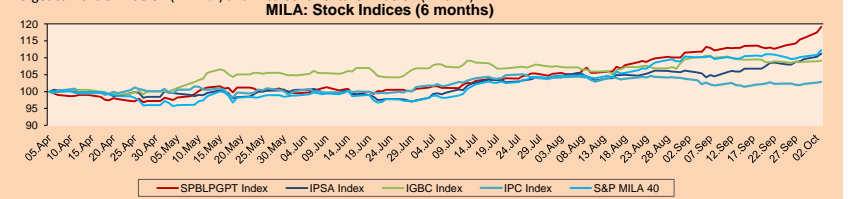
MILA

Peru: The General Index of the Peruvian BVL ended the session today with a positive performance of +1.42%. The index maintains a positive cumulative annual trend of +22.48% in local currency, while the adjusted performance in foreign currency is +25.95%. Then, the S&P/BVL Peru SEL gained +1.67%, while S&P/BVL LIMA 25 grew 2.45%. The spot PEN reached S/3.2587.

Chile: The IPISA index ended the day with a positive return of +0.91%. The index sectors with the most positive results were Energy (+1.76%) and Materials (+1.37%). On the other hand, the values with the highest results were Compañía Cervecerías Unidas SA (+3.19%) and Embotelladora Andina SA (+2.76%).

Colombia: The COLCAP index closed the session with positive results of +0.03%. The sectors with upward performance were Energy (+0.74%) and Telecommunications Services (+0.58%). In addition, the shares with the highest yields were Canacol Energy Ltd. S.A. (+1.02%) and Interconexión Eléctrica SA ESP (+0.73%).

Mexico: The Mexican CPI index closed today with a positive result of +0.23%. The index sectors that generated the most positive returns were Public Services (+3.40%) and Telecommunications Services (+1.44%). Finally, the shares with the highest yields were Infraestructura Energética Nova SAB de CV (+2.17%) and Arca Continental SAB de CV (+2.07%).

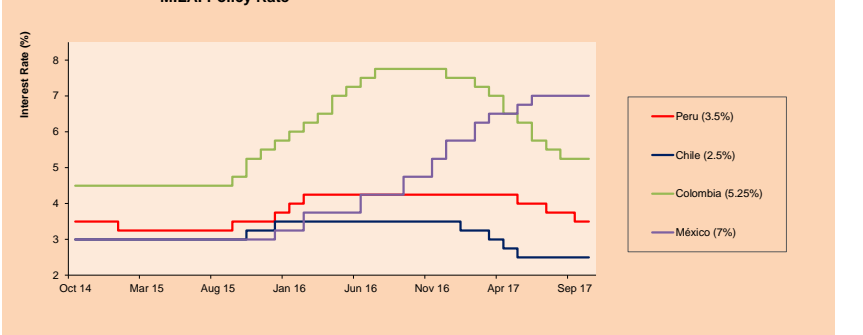


Base: 06/04/17=100

Source: Bloomberg

ETFs	Curr.	Close	1D	5D	30 D	YTD	Exchange
▲ iShares MSCI All Peru Capped Index Fund	USD	40.36	2.51%	5.46%	6.77%	23.05%	NYSE Arca
▲ iShares MSCI Chile Capped	USD	49.84	2.11%	3.51%	2.83%	33.19%	BATS
▲ Global X MSCI Colombia	USD	14.59	0.00%	-0.78%	-0.95%	12.75%	NYSE Arca
▲ iShares MSCI Mexico Capped	USD	54.84	0.31%	-1.03%	-3.38%	24.72%	NYSE Arca
▲ iShares MSCI Emerging Markets	USD	45.53	1.58%	2.34%	0.82%	30.05%	NYSE Arca
▲ Vanguard FTSE Emerging Markets	USD	44.21	1.38%	1.98%	-0.92%	23.56%	NYSE Arca
▲ iShares Core MSCI Emerging Markets	USD	54.84	1.48%	2.26%	0.83%	29.19%	NYSE Arca
▲ iShares JP Morgan Emerging Markets Bonds	USD	58.64	0.93%	1.52%	0.33%	19.89%	BATS
▲ Morgan Stanley Emerging Markets Domestic	USD	8.05	0.63%	-1.71%	-1.47%	12.27%	New York

MILA: Policy Rate



Source: Bloomberg

Capital Market Laboratory Coordinator: Economist Bruno Bellido Anicam
Support: Sebastián Butters, Kauri Olulo, Jairo Trujillo, Mario Villar
e-mail: pulsobursatil@ulima.edu.pe
facebook: www.facebook.com/pulsobursatil.ul
Phone number: 4376767 Anexos: 35340 - 35310

PULSO BURSÁTIL

LIMA

Stocks

Ticker	Currency	Price	1D*	5D*	30D*	YTD*	Frequency	Volume (US\$)	Beta	Dividend Yield (%)	Price Earning	Market Cap. (M US\$)	Economic Sector*	Index Weight
▲ ALICORC1 PE**	S/.	9.38	0.86%	-0.21%	7.20%	28.49%	100.00%	104,620	0.56	1.49	21.07	2,453.19	Industrial	3.53%
▲ ATACOCB1 PE**	S/.	0.67	15.52%	49.22%	68.34%	67.50%	100.00%	352,767	1.74	0.00	-	206.74	Mining	1.02%
- BACKUSH1 PE**	S/.	17.00	0.00%	0.00%	1.80%	6.25%	90.00%	167,621	0.43	0.00	2.59	7,279.00	Industrial	0.82%
▲ BAP PE**	US\$	211.56	0.48%	3.50%	2.58%	33.73%	100.00%	534,400	1.11	1.77	-	16,811.99	Diverse	5.82%
▲ BVN PE**	US\$	13.18	3.05%	0.30%	-1.86%	14.61%	100.00%	520,733	1.40	0.63	-	3,628.30	Mining	5.88%
▲ CASAGRC1 PE**	S/.	6.30	3.28%	2.44%	2.44%	-7.89%	100.00%	36,099	0.53	6.41	8.78	162.61	Agricultural	1.31%
▼ CONTINC1 PE**	S/.	4.21	-1.17%	-0.94%	5.25%	16.78%	100.00%	99,266	0.82	3.51	15.72	6,299.35	Finance	2.85%
▲ CORAREH1 PE**	S/.	0.65	3.17%	8.33%	20.37%	32.65%	100.00%	233,821	0.93	4.85	11.03	256.48	Industrial	1.72%
▲ CPACASC1 PE**	S/.	8.40	0.60%	1.20%	4.35%	34.44%	100.00%	177,254	0.40	4.25	31.76	1,098.80	Industrial	2.38%
▲ CVERDEC1 PE**	US\$	24.50	2.08%	6.52%	2.94%	28.21%	100.00%	259,960	1.07	0.00	19.01	8,576.37	Mining	5.25%
- ENGEPEC1 PE**	S/.	2.37	0.00%	0.85%	2.16%	-8.85%	65.00%	4,767	0.81	0.00	40.87	2,101.04	Public Services	1.44%
- ENDISPC1**	S/.	5.68	0.00%	0.00%	3.27%	-7.79%	75.00%	1,069	0.87	0.00	12.22	1,111.40	Public Services	0.98%
▲ FERREYC1 PE**	S/.	2.27	6.07%	9.13%	17.01%	34.32%	100.00%	339,072	0.83	5.66	9.65	705.54	Diverse	4.90%
▲ GRAMONC1 PE**	S/.	3.28	2.82%	5.81%	32.79%	-30.21%	100.00%	116,090	1.78	0.00	128.45	663.39	Diverse	4.05%
- IFS PE**	US\$	37.01	0.00%	1.68%	4.99%	15.66%	95.00%	1,702,721	0.53	3.51	13.49	4,186.23	Diverse	7.22%
- INRETC1 PE**	US\$	19.00	0.00%	0.00%	3.26%	-1.96%	100.00%	64,600	1.00	0.00	24.47	1,953.34	Diverse	5.28%
- LUSURC1 PE**	S/.	12.03	0.00%	1.69%	2.38%	-8.10%	85.00%	15,353	0.68	5.15	13.86	1,795.01	Public Services	1.81%
▲ MILPOC1 PE**	S/.	5.35	11.00%	17.58%	44.59%	56.43%	95.00%	496,271	1.06	0.00	12.28	2,175.19	Mining	1.56%
▲ MINSURH1 PE**	S/.	1.76	7.98%	13.55%	31.34%	21.38%	90.00%	186,425	1.49	0.00	21.93	1,554.80	Mining	3.09%
▲ PML PE**	US\$	0.26	4.40%	4.40%	16.00%	89.13%	100.00%	42,364	1.07	0.00	-	67.38	Mining	2.12%
▲ RELAPAC1 PE**	S/.	0.27	6.80%	4.71%	16.09%	14.59%	100.00%	235,752	0.94	0.00	5.23	289.20	Industrial	2.12%
▲ SCCO PE**	US\$	40.54	2.43%	3.66%	-1.84%	25.55%	85.00%	41,071	0.96	31.79	31,338.53	Mining	2.14%	
▲ SIDERC1 PE**	S/.	0.46	0.22%	6.79%	28.45%	38.18%	100.00%	116,917	1.60	0.00	7.00	171.57	Industrial	1.43%
▲ TV PE**	US\$	1.26	5.88%	11.50%	3.28%	48.24%	100.00%	353,772	1.74	0.00	-	1,036.41	Mining	2.93%
▲ UNACEMC1 PE**	S/.	2.99	1.36%	10.33%	17.25%	16.80%	100.00%	140,877	1.06	1.74	48.10	1,508.52	Industrial	3.00%
▲ VOLCABC1 PE**	S/.	1.31	6.50%	31.00%	36.46%	81.94%	100.00%	1,602,494	1.49	0.94	17.45	2,582.34	Mining	5.90%

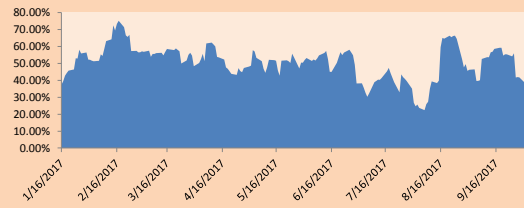
Quantity of shares: 26
Source: Bloomberg, Economía
* Bloomberg Industry Classification System
** PER is used in the stock market and original currency of the instrument
*Legend: Variation 1D: 1 Day; 5D: 5 Days, 1M: 1 Month; YTD: Var.% 12/31/16 to date

Sectorial Indices

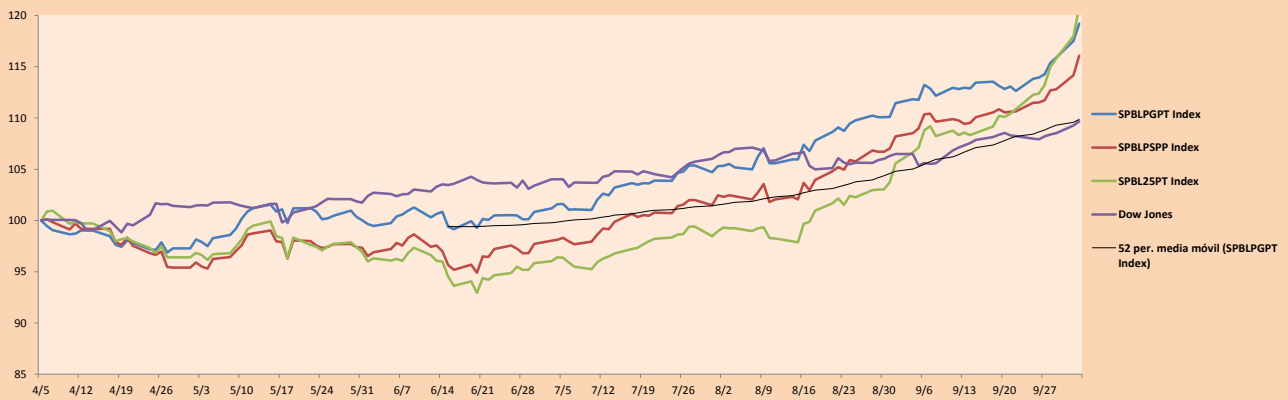
	Close	1D*	5D*	30D*	YTD*	Beta
▲ Mining Index	318.44	2.90%	7.09%	5.62%	28.22%	1.54
▲ Consumer Index	816.57	0.44%	-0.03%	5.95%	19.91%	0.37
▲ Industrial Index	244.36	2.97%	6.62%	16.70%	10.53%	0.89
▲ Banking and Financial Index	1,062.69	0.10%	3.06%	3.57%	30.21%	1.08
▼ Construction Index	297.40	1.63%	5.63%	16.30%	0.57%	0.86
▼ Services Index	441.91	-0.60%	-0.10%	0.52%	-8.66%	0.27
▲ Juniors Index	35.70	1.08%	4.08%	8.81%	27.23%	0.58
▼ Electric Index	431.42	-0.59%	-0.09%	0.52%	-8.66%	0.27

*Legend: Variation 1D: 1 Day; 5D: 5 Days, 1M: 1 Month; YTD: Var.% 12/31/16 to date

Correlation Graph of Returns of Mining Index against Metallic Index of London (3 months)



Indices (6 months)



Source: Bloomberg

Capital Market Laboratory Coordinator: Economist Bruno Bellido Anicama
Support: Sebastián Butters, Kaori Olulua, Jairo Trujillo, Mario Villar
e-mail: pulsobursatil@ulima.edu.pe
facebook: www.facebook.com/pulsobursatil.ul
Phone number : 4376767 Anexes: 35340 - 35310

The content of this document is just for informational purposes. The information and opinions expressed should not be considered as recommendations for future decisions. Under any circumstances, the Capital Market Laboratory of University of Lima will be responsible for the use of the statements in this document.

PULSO BURSÁTIL

SOVEREIGN RATING

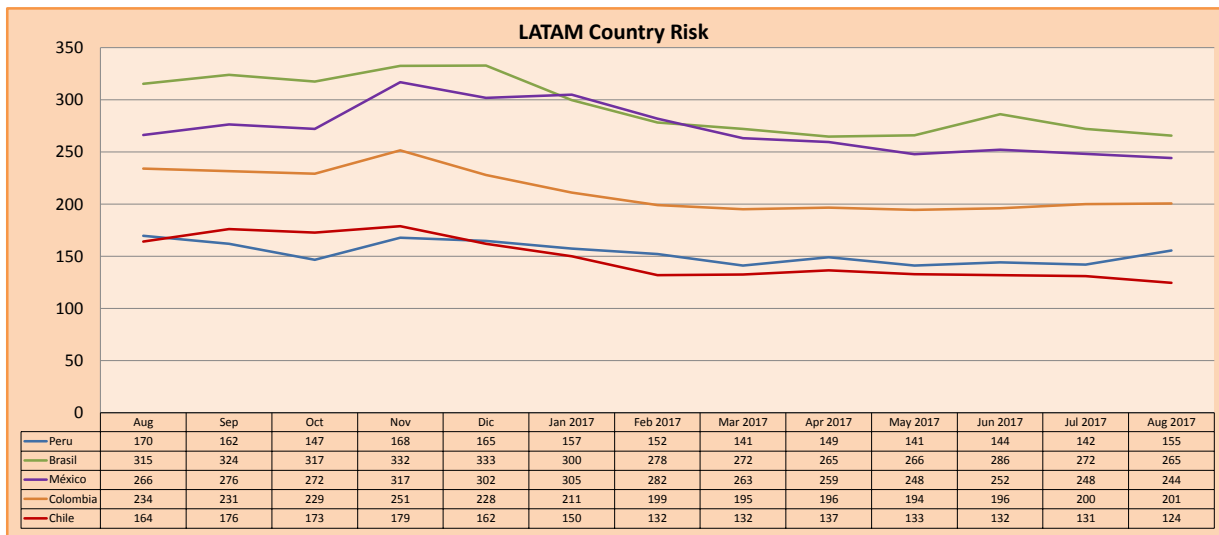
RISK RATINGS

Moody's	S&P	Fitch	
Aaa	AAA	AAA	Prime
Aa1	AA+	AA+	High credit quality
Aa2	AA	AA	
Aa3	AA-	AA-	
A1	A+	A+	Medium-high grade, with low credit risk
A2	A	A	
A3	A-	A-	
Baa1	BBB+	BBB+	Moderate Credit Risk
Baa2	BBB	BBB	
Baa3	BBB-	BBB-	
Ba1	BB+	BB+	It has speculative elements and it is subject to substantial credit risk
Ba2	BB	BB	
Ba3	BB-	BB-	
B1	B+	B+	It is considered speculative and it has high credit risk
B2	B	B	
B3	B-	B-	
Caa1	CCC+	CCC	Bad credit conditions and it is subject to high credit risk
Caa2	CCC		
Caa3	CCC-		
Ca	C	DDD DD D	Very close to default or in default
C	D		

Source: Bloomberg

Latin America Credit Rating			
Clasificadora de riesgo			
Country	Moody's	Fitch	S&P
Peru	A3	BBB+	BBB+
Mexico	A3	BBB+	BBB+
Venezuela	Caa3	CC	CCC-
Brazil	Ba2	BB	BB
Colombia	Baa2	BBB	BBB
Chile	Aa3	A	A+
Argentina	B3	B	B
Panama	Baa2	BBB	BBB

Source: Bloomberg



Source: Bloomberg

Capital Market Laboratory Coordinator: Economist Bruno Bellido Anicama
 Support: Sebastián Butters, Kaori Olulo, Jairo Trujillo, Mario Villar
 e-mail: pulsobursatil@ulima.edu.pe
 facebook: www.facebook.com/pulsobursatil.ul
 Phone number : 4376767 Anexos: 35340 - 35310

The content of this document is just for informational purposes . The information and opinions expressed should not be consider as recommendations for future decisions .Under any circumstances, the Capital Market Laboratory of University of Lima will be responsible for the use of the statements in this document.